

PCR Diagnosis of *Entamoeba histolytica* Cysts in Stool Samples

Joung-Ho Moon¹, Shin-Hyeong Cho¹, Jae-Ran Yu², Won-Ja Lee¹ and Hyeng-Il Cheun^{1,*}

¹Division of Malaria and Parasitic Diseases, Korea National Institute of Health, Osong 363-951, Korea; ²Kon-Kuk University College of Medicine, Environmental and Tropical Medicine, Seoul 143-701, Korea

Abstract: Amebiasis is a protozoan disease caused by *Entamoeba histolytica* and a potential health threat in areas where sanitation and hygiene are inappropriate. Highly sensitive PCR methods for detection of *E. histolytica* in clinical and environmental samples are extremely useful to control amebiasis and to promote public health. The present study compared several primer sets for small subunit (SSU) rDNA and histone genes of *E. histolytica* cysts. A 246 bp of the SSU rDNA gene of pure cysts contained in phosphate-buffered saline (PBS) and in stool samples was successfully amplified by nested PCR, using the 1,147-246 bp primer set, of the primary PCR products which were pre-amplified using the 1,147 bp primer as the template. The detection limit of the nested PCR using the 1,147-246 primer set was 10 cysts in both groups (PBS and stool samples). The PCR to detect histone gene showed negative results. We propose that the nested PCR technique to detect SSU rDNA can be used as a highly sensitive genetic method to detect *E. histolytica* cysts in stool samples.

Key words: *Entamoeba histolytica*, SSU rDNA, PCR, diagnosis, stool

Parasitic infections are endemic and represent a major public health problem worldwide. In particular, *Entamoeba histolytica*, a pathogenic protozoan that parasitizes the human small intestine and causes amebiasis, results in human infections on a global scale [1]. It has been reported that 40-50 million people worldwide develop *E. histolytica*-related dysentery or liver abscess, and as many as 100,000 people die of amebiasis every year [2]. The conventional method of diagnosing *E. histolytica* utilizes microscopy, but its sensitivity is less than 60% [3]. To improve the rate and sensitivity of the diagnosis, PCR-based approaches have been used since the early 1990s, and many studies have been conducted to detect target *E. histolytica* DNA in the human stool [4-7]. The small subunit rRNA (SSU rDNA) gene has been widely targeted to diagnose *E. histolytica* and can distinguish it from other ameba species [8,9]. Here, we describe a new nested PCR method to specifically and sensitively detect *E. histolytica* in human stool samples by targeting the SSU rDNA gene.

The *E. histolytica* HM-1 (IMSS c16) strain used in this study

was kindly provided by Prof. Myeong-Heon Shin of Yonsei University, the Republic of Korea. *E. histolytica* cysts were counted using a hemocytometer, and 0 to 10⁵ cysts were added to stool samples. DNA was extracted from the stool samples using a modified protocol of the formalin-ether method of Garcia and coworkers [10,11]. A stool sample, 1 g, was placed in a sterilized plastic cup, and 10 ml of distilled water was added. The solution was filtered once through gauze and centrifuged at 1,660 g for 10 min. The supernatant was removed, and 10 ml of 10% ethanol was added to the precipitate, which was completely dissolved using a disposable loop. Ether (3 ml) was added to the solution, which was shaken vigorously and centrifuged at 1,660 g for 10 min. The supernatant was completely removed, and DNA was extracted from the precipitate using a QIAamp DNA stool mini kit (Qiagen, Hilden, Germany). After centrifugation, the pellet precipitate was transferred to a 2 ml Eppendorf tube and completely dissolved in 1.4 ml of the ASL buffer from the kit. The solution was subjected to 5 times' freeze-thaw iterations and then incubated at 95°C for 10 min. The remaining DNA extraction steps were in accordance with the manufacturer's instructions. The extracted DNAs were used as templates in the primary PCR reaction.

The primers used in this study were designed based on the sequence of the SSU rDNA of *E. histolytica*. For the primary PCR reaction, the primer pairs were used that yielded an ex-

•Received 11 June 2010, revised 4 May 2011, accepted 17 August 2011.

*Corresponding author (ilcheun7@korea.kr)

© 2011, Korean Society for Parasitology

This is an Open Access article distributed under the terms of the Creative Commons Attribution Non-Commercial License (<http://creativecommons.org/licenses/by-nc/3.0>) which permits unrestricted non-commercial use, distribution, and reproduction in any medium, provided the original work is properly cited.

pected final product (Table 1). PCR reactions were conducted in a total of 25 μ l, which included PCR premix (GenDEPOT, Barker, Texas, USA), 2 μ l (\sim 100 ng) of extracted DNA, and 10 μ mol of each primer. The PCR reactions were conducted with a G-STORM apparatus (Gene Technologies, Braintree, UK). The DNAs were denatured for 7 min at 94°C, followed by 35 cycles of 60 sec at 94°C, 60 sec at 60°C or 52°C, and 90 sec at 72°C. Occasionally, the gradient PCR method was used to establish an optimum annealing temperature. Finally, the reactions were incubated for 10 min at 72°C. The nested PCR was conducted with 1 μ l of the primary PCR product as the template. After the nested PCR, the final product was electrophoresed in a 2% agarose gel and stained with ethidium bromide. Bands were visualized under ultraviolet light, and photos were taken using a gel documentation system (Syngene, Cambridge, UK).

As shown in Fig. 1A, the primary PCR reaction, using the 1,147 forward and 1,147 reverse primer set, did not show any bands specifically indicating amplified SSU rDNA gene from pure *E. histolytica* cysts with a final product of 1,147 bp. There was no apparent amplification of the SSU rDNA gene when *E. histolytica* cysts were added to PBS or stool samples. However,

Fig. 1B shows that the nested PCR method specifically amplified 246 bp SSU rDNA in the PBS and also in stools, contain-

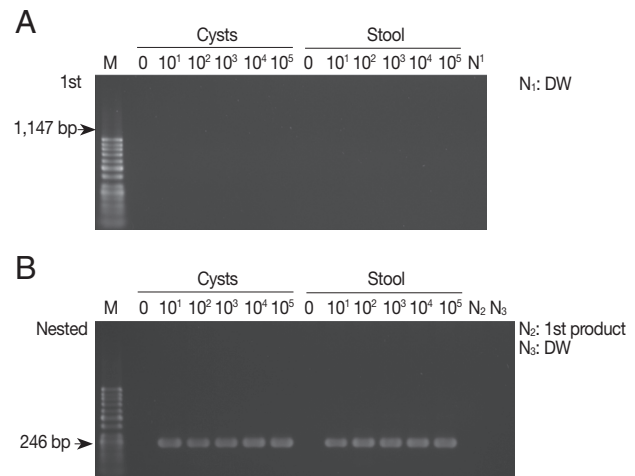


Fig. 1. Products of primary and nested PCR amplifications to detect SSU rDNA gene in *Entamoeba histolytica* cysts. (A) A primary PCR amplification with pure cysts in PBS and in stool samples using the 1,147 primer set. (B) A nested PCR amplification with 1 μ l of the primary PCR products as templates using the 1,147-246 primer set. M, DNA marker; N₁ and N₃, negative control (DW); N₂, primary PCR product.

Table 1. Primer sets used for detection of *Entamoeba histolytica* cysts

Target gene	Primer name	Sequence	PCR product size (bp)	T _m (°C)
SSU rDNA Asscesion No. X56991	1147 F	5'-ATC TGG TTG ATC CTG CCA GT-3'	1,147	60
	1147 R	5'-TGA CCA TAC TCC CCC TGA AG-3'		
	1147-246 F	5'-AAG ATG CAC GAG AGC GAA AG-3'	246	60
	1147-246 R	5'-TGA CCA TAC TCC CCC TGA AG-3'		
	1147-511 F	5'-CTT TCG AAT TGA AGA GGT AG-3'	511	52
	1147-511 R	5'-TTG ATT AAT GGA CAC AGT TG-3'		
	1147-694 F	5'-CAA TGA ATT GAG AAA TGA CA-3'	694	52
	1147-694 R	5'-CTT ATA GCG ATC ATG GAT TT-3'		
	1077 F	5'-TGA GTT AGG ATG CCA CGA CA-3'	1,077	60
	1077 R	5'-AAC TAA GAA CGG CCA TGC AC-3'		
	1077-466 F	5'-TTT CGA GAG AAG GAT TAA AA-3'	466	52
	1077-466 R	5'-ACC CAA TAA ATC ATG AAA GA-3'		
	1077-732 F	5'-CTT TCG AAT TGA AGA GGT AG-3'	732	52
	1077-732 R	5'-CAA TTC CTT TAA GTT TCA GC-3'		
	927 F	5'-AAC GGG AGA GGT GAA AAT CC-3'	927	60
	927 R	5'-GTA CAA AGG GCA GGG ACG TA-3'		
	927-520 F	5'-GAT CAG ATA CCG TCG TAG TC-3'	520	52
	927-520 R	5'-TAA AAG AGG TCT AAC CGA AA-3'		
	927-686 F	5'-AAA TCC ATG ATC GCT ATA AG-3'	686	52
927-686 R	5'-TAA AAG AGG TCT AAC CGA AA-3'			
Histone H4 Asscesion No. X84009	H4 F	5'-TGC TTG TCC CAT TTC TCC TT-3'	906	60
	H4 R	5'-CCT GAT CCT GTA TCC GTT GC-3'		
	H4 F	5'-GCA TAA CAT CAT TTT TGT GA-3'	531	52
	H4 R	5'-CTT TTT CTC CAA TTT TTC AG-3'		

Table 2. Comparative sensitivity of nested PCR methods using several primer sets

Target gene	Primer set	Cysts in PBS						Cysts in stool samples					
		0	10	10 ²	10 ³	10 ⁴	10 ⁵	0	10	10 ²	10 ³	10 ⁴	10 ⁵
SSU rDNA	1,147-246	-	+	+	+	+	+	-	+	+	+	+	+
	1,147-511	-	+	+	+	+	+	-	-	-	+	+	+
	1,147-694	-	+	+	+	+	+	-	-	-	-	+	+
	1,077-466	-	+	+	+	+	+	-	-	+	+	+	+
	1,077-732	-	+	+	+	+	+	-	-	+	+	+	+
	927-520	-	+	+	+	+	+	-	-	-	-	-	+
	927-686	-	+	+	+	+	+	-	-	-	-	-	+
Histone <i>H4</i>	<i>H4</i>	-	-	-	+	+	+	-	-	-	-	-	-

ing cysts, using the 1,147-246 bp primer set. The nested PCR was conducted using the primers 1,147-246 forward and 1,147-246 reverse set, with the product of the primary PCR products as the template. The detection limit of the nested PCR method for specific amplification of the SSU rDNA gene was 10 pure cysts in PBS, and the same detection limit was found for cysts in stool samples, demonstrating a high sensitivity of this method (Fig. 1B; Table 2). We also conducted nested PCR using a primer pair that specifically amplify the histone *H4* gene of *E. histolytica*; however, no product was amplified from the stool samples (Table 2). Thus, *E. histolytica* in stool samples could be detected sensitively by amplification of the SSU rDNA gene but not the histone *H4* gene.

The detection limits of the nested PCR with several primer sets used in this study are shown in Table 2. All nested PCR methods with several primer sets that targeted the SSU rDNA gene had high sensitivities for detecting cysts in PBS. However, most primer sets, with the exception of 1,147-246 bp set, showed useless sensitivity for detection of cysts in stool samples. Only the 1,147-246 primer set showed the highest detection sensitivity for cysts in both PBS and stool samples. Our data strongly suggest that the nested PCR method using the 1,147-246 primer set would be effective for detection of *E. histolytica* cysts in clinical samples (Table 2).

The conventional diagnosis of *E. histolytica* via microscopy has low sensitivity and is prone to give false-positive or false-negative results [12]. Therefore, several PCR-based diagnostic methods have been developed that utilize primers for diverse target genes of *E. histolytica* [4,6,7,11,13]. The recently developed methods include nested PCR, which is more sensitive than conventional PCR [14,15]. Many different types of factors in clinical samples, such as fecal materials in stool samples, can interfere with PCR analyses, thus, it is needed to use more accurate 2-step nested PCR approaches for clinical diagnosis of

amebiasis [16]. The primary PCR may yield only a low concentration of the product, which may lead to an unsuccessful ethidium bromide-based visual detection. However, specific bands can be observed following a secondary PCR using the product of the primary PCR as the template. Our study clearly demonstrated the usefulness of the nested PCR method for detecting *E. histolytica* SSU rDNA from stool samples.

The Department of Malaria and Parasitic Diseases, Korea National Institute of Health, has undertaken surveys of *E. histolytica* among patients afflicted with severe diarrhea in 16 city or provincial health institutes and hospitals using an enzyme immunoassay technique. Notably, 0.4-0.5% among 24,000 patients were positive for *E. histolytica* in 2007 to 2008 [17]. However, the enzyme immunoassay used was suitable only for screening, and more accurate diagnostic methods were necessary. Therefore, we developed a molecular genetic method using the SSU rDNA and histone *H4* as candidate genes of *E. histolytica*. The results strongly suggested that the nested PCR using the 1,147-246 bp primer set to detect SSU rDNA is an effective method for the diagnosis of *E. histolytica* cysts in stool samples. The present nested PCR method using the 1,147-246 bp primer set revealed a higher sensitivity than other conventional PCR-based methods, and our method showed specifically amplified DNA bands even with 10 cysts contained in PBS and stool samples [4,6,7]. Moreover, our results indicated that many different types of factors, that may be present in stool samples, do not interfere with the results of our nested PCR method.

In our study, to extract highly pure DNAs of *E. histolytica* cysts in stool samples, we used an improved version of the formalin-ether concentration technique of Garcia et al. [10,11], and thus could obtain fairly pure DNAs from stool samples. However, a disadvantage of our method is that it is quite complicated and time-consuming. Thus, a simpler and faster DNA extraction method will be necessary.

ACKNOWLEDGEMENTS

We express our sincere gratitudes to Dr. Myeong-Heon Shin of Yonsei University, Korea who kindly provided us with the *E. histolytica* HM-1 (IMSS c16 strain). This work was supported by a grant from the National Institute of Health (NIH-091-4800-4845-300), National Research and Development Program, Ministry of Health and Welfare, the Republic of Korea.

REFERENCES

1. Haque R, Petri WA Jr. Diagnosis of amebiasis in Bangladesh. *Arch Med Res* 2006; 37: 273-276.
2. World Health Organization. Amoebiasis. *WHO Weekly Epidemiol Rec* 1997; 72: 97-100.
3. Gonzalez-Ruiz A, Haque R, Aguirre A, Castañón G, Hall A, Guhl F, Ruiz-Palacios G, Miles MA, Warhurst DC. Value of microscopy in the diagnosis of dysentery associated with invasive *Entamoeba histolytica*. *J Clin Pathol* 1994; 47: 236-239.
4. Tannich E, Burchard GD. Differentiation of pathogenic from non-pathogenic *Entamoeba histolytica* by restriction fragment analysis of a single gene amplified in vitro. *J Clin Microbiol* 1991; 29: 250-255.
5. Britten D, Wilson SM, McNerney R, Moody AH, Chiodini PL, Ackers JP. An improved colorimetric PCR-based method for detection and differentiation of *Entamoeba histolytica* and *Entamoeba dispar* in feces. *J Clin Microbiol* 1997; 35: 1108-1111.
6. Troll H, Marti H, Weiss N. Simple differential detection of *Entamoeba histolytica* and *Entamoeba dispar* in fresh stool specimens by sodium acetate-acetic acid-formalin concentration and PCR. *J Clin Microbiol* 1997; 35: 1701-1705.
7. Intarapuk A, Kalambaheti T, Thammapalerd N, Mahannop P, Kaewsatien P, Bhumiratana A, Nityasuddhi D. Identification of *Entamoeba histolytica* and *Entamoeba dispar* by PCR assay of fecal specimens obtained from Thai/Myanmar border region. *Southeast Asian J Trop Med Public Health* 2009; 40: 425-434.
8. Bhattacharya S, Bhattacharya A, Diamond LS, Soldo AT. Circular DNA of *Entamoeba histolytica* encodes ribosomal RNA. *J Protozool* 1989; 36: 455-458.
9. Mirelman D, Nuchamowitz Y, Stolarsky T. Comparison of use of enzyme-linked immunosorbent assay-based kits and PCR amplification of rRNA genes for simultaneous detection of *Entamoeba histolytica* and *Entamoeba dispar*. *J Clin Microbiol* 1997; 35: 2405-2407.
10. Garcia LS, Brewer TC, Bruckner DA. A comparison of the formalin-ether concentration and trichrome-stained smear methods for the recovery and identification of intestinal protozoa. *Am J Med Technol* 1979; 45: 932-935.
11. Garcia LS, Shimizu R. Comparison of clinical results for the use of ethyl acetate and diethyl ether in the formalin-ether sedimentation technique performed on polyvinyl alcohol-preserved specimens. *J Clin Microbiol* 1981; 13: 709-713.
12. Petri WA Jr, Haque R, Lysterly D, Vines RR. Estimating the impact of amebiasis on health. *Parasitol Today* 2000; 16: 320-321.
13. Zindrou S, Orozco E, Linder E, Téllez A, Björkman A. Specific detection of *Entamoeba histolytica* DNA by hemolysin gene targeted PCR. *Acta Trop* 2001; 78: 117-125.
14. Khairmar K, Parija SC. A novel nested multiplex polymerase chain reaction (PCR) assay for differential detection of *Entamoeba histolytica*, *E. moshkovskii* and *E. dispar* DNA in stool samples. *BMC Microbiol* 2007; 7: 47.
15. Haque R, Ali IK, Akther S, Petri WA Jr. Comparison of PCR, isoenzyme analysis, and antigen detection for diagnosis of *Entamoeba histolytica* infection. *J Clin Microbiol* 1998; 36: 449-452.
16. Lantz PG, Matsson M, Wadström T, Rådström P. Removal of PCR inhibitors from human faecal samples through the use of an aqueous two-phase systems for sample preparation prior to PCR. *J Microbiol Methods* 1997; 28: 159-167.
17. Korea National Institute of Health. Water and Food-borne Diarrheal Disease-Surveillance in Korea. 2008, p 73 (in Korean).