

PERSPECTIVE

Open Access



# Analyses of repeated failures in cancer therapy for solid tumors: poor tumor-selective drug delivery, low therapeutic efficacy and unsustainable costs

Hiroshi Maeda<sup>1,2,3\*†</sup> and Mahin Khatami<sup>4\*†</sup> 

## Abstract

For over six decades reductionist approaches to cancer chemotherapies including recent immunotherapy for solid tumors produced outcome failure-rates of 90% ( $\pm 5$ ) according to governmental agencies and industry. Despite tremendous public and private funding and initial enthusiasm about missile-therapy for site-specific cancers, molecular targeting drugs for specific enzymes such as kinases or inhibitors of growth factor receptors, the outcomes are very bleak and disappointing. Major scientific reasons for repeated failures of such therapeutic approaches are attributed to reductionist approaches to research and infinite numbers of genetic mutations in chaotic molecular environment of solid tumors that are bases of drug development. Safety and efficacy of candidate drugs tested in test tubes or experimental tumor models of rats or mice are usually evaluated and approved by FDA. Cost-benefit ratios of such 'targeted' therapies are also far from ideal as compared with antibiotics half a century ago. Such alarming records of failure of clinical outcomes, the increased publicity for specific vaccines (e.g., HPV or flu) targeting young and old populations, along with increasing rise of cancer incidence and death created huge and unsustainable cost to the public around the globe. This article discusses a closer scientific assessment of current cancer therapeutics and vaccines. We also present future logical approaches to cancer research and therapy and vaccines.

**Keywords:** Cancer vaccines, Cancer financial toxicity, Cancer therapeutic failure, Cancer/medical establishment, Decision makers, Enhanced permeability and retention (EPR), Genomic mutations, Immunotherapy, Incredible price of drugs, Inflammation, Medical/scientific ponzi schemes, Molecular target drugs, Molecular false flags, Nanoparticles, Oxidative stress and mutations, Precision and personalized medicine, ROS, Targeted therapy, Tarnished immune surveillance, Yin and Yang of acute inflammation

## Background

Review of over six decades of cancer chemotherapy and tremendous investment for understanding cancer biology and cure reveal minimal or partial success for only the treatment of leukemia and non-solid or soft tissue tumors

[1–7].<sup>1,2</sup> The latest statistics in cancer incidence, mortality and cancer burden are growing at an alarming pace around the globe, according to governmental agencies and private organizations including the International Agency for Research on Cancer (IARC, an agency within

\*Correspondence: maedabdr@sweet.ocn.ne.jp; mkgoodness@aol.com

†Hiroshi Maeda and Mahin Khatami contributed equally to this work

<sup>1</sup> BioDynamics Research Foundation, Kumamoto University (Med), Kumamoto, Kenshin Bldg 3F, Kuwamizu 1-chome, 24-6, Chuo-ku, Kumamoto 862-0954, Japan

<sup>4</sup> Inflammation, Aging and Cancer, National Cancer Institute, The National Institutes of Health, Bethesda, MD, USA

Full list of author information is available at the end of the article

<sup>1</sup> In February of 2012, in a National Cancer Institute (NCI) Board meeting report on cancer therapy admitted that success rate being 15% also, in March of 2012, in a Metabolon conference in Bethesda, Maryland, company professionals reported that 95% of cancer drug developed failed.

<sup>2</sup> Medscape December 5, 2011 (Washington DC) reported by Dr. Foji (NCI) 'zero (is) the number of targeted therapies that prolonged survival by 1 year' when compared with conventional treatment.

World Health Organization (WHO), or the American Cancer Society (ACS), [8–12].<sup>3</sup> In 2014, IARC reported that the global war against cancer cannot be won by treatment alone, and recommended the need for urgent implementation of efficient prevention strategies to prevent cancer crisis [8]. Clinical trials using specific cancer drugs repeatedly failed patients and the expensive therapies discontinued after loss of patients [13–16].

Other recently published articles on basic research and clinical studies of cancer and pathogen-specific vaccines have raised serious concerns about the worthiness, hidden agenda and high costs of these reductionist approaches to such projects that are toxic and repeatedly failed the public [14–40]. The majority of cancer claimed ‘targeted’ therapies, ‘personalized’ or ‘precision’ medicine are based on identification of evolving mutation-derived molecules and use of specific and expensive technologies with little or no benefit to patients. The safety and political agenda behind heavy publicity for targeting the public to consume a wide range of specific vaccines against a numbers of viruses (e.g., HPV, measles, meningitis, Ebola, Flu, Zika) are topics of debates and controversies for effectiveness of such undertaking (details below) [18, 22, 39–45].<sup>4,5,6</sup>

In majority of claimed cancer ‘targeted’ therapies, ‘personalized’ or ‘precision’ medicine or the recently fashionable immunotherapeutic approaches, drugs are developed as inhibitors of one or combination of specific over-, or under-expression of cancer-associated molecules such as various proteins, epitopes, growth factors, cytokines/chemokines, receptor/adaptor molecules or enzymes (e.g., Kras, BCR, PI3K, CD11, CD22, Myc, BRCA2, ALK, IL-10, IL-12, p53, p27, p70, MAPKs, TKIs, VEGF, EGF), identified in the molecular tsunami of site-specific cancers [18–22, 27–39, 43–45, 65, 66]. The molecular targets are derived from mutated genetic components (e.g., DNA damage, hypo-, hyper-methylated epigenetic modifications and expression products). While the isolated molecular entities are parts of the highly

heterogeneous and chaotic landscape in cancer biology, they should not be considered as ‘target’ for therapy as they have little/no value on their own for translational purposes although they may work in mouse models for the selected conditions and duration of therapy which do not apply to human (see below) [18, 22, 38, 39, 44–46].

Patients with stage III or IV diseases who are treated in clinics, often advance to metastatic stages and develop drug resistance and relapse involving lymph nodes, liver, lungs, bones, and brain resulting in systemic multiple organ failures (MOFs) and damages to vasculature and induction or activation of proteolytic cascade resulting in disseminated intravascular coagulation (DIC) which are most difficult to cure as many physicians experienced [35, 39, 44, 46–49].

In this perspective, attempts were made to briefly review the various therapeutic modalities that have been used for treatment of solid tumors, immunotherapy or safety of pathogen-specific vaccines and the associated cancer financial toxicities for the past several decades [14–18, 22, 29–31, 39–87] (see footnote 3–8).

### **Scientific bases for repeatedly failed therapeutic approaches. Molecular false flags and distorted foundations for chemo-immunotherapy**

Scientific analyses of data on the repeated failures of the majority of highly publicized and well-funded cancer projects that are claimed as ‘targeted’ therapies, ‘personalized’ or ‘precision’ medicine or the recent trials on ‘immunotherapies’ are rarely reported. The decision makers of such expensive, out-of-focus and fuzzy undertakings seldom consider the life-threatening consequences of wrong and reductionist approaches to drug development for patients and the tremendous economic burden to the society. The irresponsible decision makers of such undertakings, either abandon data on failed outcomes or downplay and ignore the serious consequences of drugs that, at best, postpone patient’s death-sentence for a few months of remission [18–22, 33–39, 44–47]. Once such expensively developed drugs (poisons) failed patients the trials are suspended and soon drug manufactures and decision makers proceed to make minor or major changes to the same protocols (e.g., changes in dosage, route and frequency of drug administration or use of combination drugs). Such strategies are again highly publicized as “new” approaches to cancer drugs through control of media using the same empty promises to justify additional support for recruiting desperate patients in expensive schemes of clinical trials [2–5, 7, 13, 18, 22, 30–38, 41–44].

To better appreciate the issues, according to the NCI updated report (National Cancer Institute Budget

<sup>3</sup> June 1, 2012, E Berger (CNBC program) in an interview with then president of MD Anderson, DePinho confirmed that 95% of cancer drugs for solid tumors fail –<http://blog.chron.com/sciguy/2012/06/m-d-anderson-president-goes-on-cnbc-extols-his-own-company>.

<sup>4</sup> “Is The U.S. Becoming a Police State to Force Mandatory Vaccination?”; also “American Academy of Pediatrics wants a Police-State approach to vaccination”, Health Impact News, September 14, 2016.

<sup>5</sup> “Complaint to the European ombudsman over maladministration at the European Medicines Agency (EMA) in relation to the safety of the HPV vaccines”. Letter signed by professionals regarding HPV safety concerns; Nordic Cochrane Centre, Copenhagen, Denmark. October 10, 2016.

<sup>6</sup> Robert F. Kennedy, Jr. Exposes New Evidence of CDC Corruption Regarding Vaccines and Autism and related reports on vaccines safety concerns-World of Mercury-accessed from Health Impact News, September 18, 2017.

Proposal for 2010), the list of major cancer funded studies included the following [reviewed in 44].

- i. 12 new drugs or drugs uses (protocol) were approved by FDA;
- ii. 348 phase III oncology trials are ongoing;
- iii. 861 cancer drugs are in some form of trial process;
- iv. 2000-plus clinical trials are accepting children and young adults;
- v. 200-plus prevention trials are ongoing and 100-plus screening trials are open.

Since 2010, the above list has grown to include several immunotherapies and numerous pathogen-specific vaccines and cancer trials for recruiting children to clinical trials using the same reductionist and chaotic approaches for young patients (Khatami, manuscript in preparation).

Major scientific reasons for repeated failed therapeutic approaches are outlined below:

- a. Review of data on molecular targeted therapies shows that the principal scientific reasons for repeated failures are identification of endless genetic mutations in the chaotic molecular environment of cancer [2–4, 17–19, 21, 22, 25–31, 37–40, 44, 45, 65]. Such moving targets on identification of specific and evolving mutations that are bases of the drugs (e.g., potent apoptotic factors or monoclonal antibodies against specific enzymes) that patients are treated with, are highly toxic and cause severe immunobiological and systemic damages to the normal functioning of tissues/organs, rather than being curative for patients. The life-threatening side effects of claimed ‘molecular targeted’ therapies, ‘personalize’ or ‘precision’ medicine include drug-resistance and cancer relapse, anorexia, cachexia, sarcopenia, leukopenia, thromboembolism and metastasis leading to multiple local or distant organ failures (MOFs) and death [19, 22, 28, 37–39, 44, 45]. Therefore, at advanced stages of the disease, the current therapeutic modalities are quite limited in their effectiveness. In addition, the severe and life-threatening side effects of drugs and loss of quality of life (QOL) would cancel out any short-lived benefits from temporary remission of cancer.
- b. For several decades, numerous circumstantial data, retrospective epidemiological or clinical reports demonstrated that chronic infections, persistent injuries or inflammation induce precancerous state of tissue that increases the risk of many cancers, particularly in aging individuals [37–39, 44, 45]. For example, the pioneering work by Maeda’s group [46–61] demonstrated that infection with influenza virus triggered activation of ROS-generating cascade [e.g.,  $O_2^-$  gener-

ation via activation of xanthine oxides, in parallel with activation of iNOS (generation of NO), and formation of peroxynitrite ( $ONOO^-$ ) in experimental models of influenza, that causes viral genes mutations and other immune and non-immune modifications. Drug resistance and induction of mutations in chronic infection of hepatitis virus, or *H. pylori*, or *Salmonella typhimurium* infection were also suggestive of the impact of ROS/RNS formation, affecting the genomic structure [46–61]. Numerous other reports also demonstrated a role of immune/inflammatory responses in site-specific tissues leading to initiation and progression of nearly all chronic illnesses including cancer, as well as neurodegenerative and autoimmune diseases [18, 22, 37–39, 44, 45, 51–54, 62–66]. These data support the notion that persistent inflammatory conditions offer powerful chemical, biological and environmental hazards in causing additional genetic alterations at site-specific tissues. Consequently, heterogeneity of such molecular targets and epitopic antigenicity, and distorted molecular components in cancers could render antidote-strategy ineffective and insufficient [18, 22, 36–39, 44, 45, 62–66].

- c. Recent attempts on extensive trials of cancer vaccines, using viral structures or substructures against several cancers such as cervixes, prostate, lung, pancreatic and skin also failed to produce the overall protective clinical outcomes [39–45, 76–78].<sup>7</sup> While the prophylactic vaccinations could be the most effective and rational medical preventive strategies, their systemic immunity and effectiveness against cancer is debatable. The recent heavily publicized vaccines against human papillomavirus (HPV) such as Gardasil<sup>™</sup>, or Cervarix<sup>™</sup> for prevention of cervical cancers or meningitis vaccines that target young generation, particularly in the United States raise concerns for safety and efficacy of such vaccines [39, 44, 45]. The short or long-term health hazards, efficacy and safety of pathogen-specific vaccines such as virus-contaminated polio vaccines, pneumonia, meningitis, HPV or Swine flu vaccines in the induction of vaccine-(antigen-load) related allergies, autoimmune or neurodegenerative diseases have been raised in a number of reports [39–45, 76–78]. Concerned parents often have to make religion and faith to resist or protest forced vaccination of their school-aged children (Khatami personal communication). The elaborate epitopic targets of cancer seem to have limited prospects and therapeutic cancer vaccination is an area of questionable efficacy for immunotherapy and safety [39–45].

<sup>7</sup> Lisa Stark, Legal Correspondence, on Vaccines—PBS News Hour September 26, 2017.

- d. As recently reported, a closer look at cancer science reveals that highly powered structure (hierarchy) in cancer/medical establishment (system) versus anti-system and chaotic approaches to cancer research and therapy ('medical/scientific ponzi schemes') are potent recipes for failed therapeutics that kills patients but generates huge corporate profit [39, 44, 45].
- e. The recent reports on immunotherapy offer more logical approaches for treating certain tumors (e.g., melanoma, urogenital, breast, non-small cell lung-NSCLC) as they are immunogenic in nature, compared with the identification of endless mutation derived 'targeted' therapies that repeatedly failed in patients [22, 36, 46, 62–65, 79–87]. However, carrying out such reductionist studies under the different name of immunotherapy present the same narrow views of cancer biology and are far from being effective for cancer patients. In these studies, little considerations are given to the cellular immune composition of site-specific tissues, the immune-non-immune local or systemic compensatory response mechanisms, the bioenergetics and oxido redox profiles of tissues toward checkpoint inhibition, as well as, the host immune and non-immune interactions with recruited cells and the adverse responses that are observed following therapy [12, 22, 36, 39, 64, 65, 82]. Effective cancer immunotherapy requires systematic understanding of the mechanisms that contribute to the ability of tumor cells to escape and bypass the immune surveillance by induction of decoy receptors, enhanced immune tolerance and loss of mitochondrial function (mitophagy), altered anabolic (growth-promoting) and catabolic (necrosis or growth-arresting) recycling proteins/lipids pathways (autophagy) in tissues. These interdependent complex pathways were defined to be provided through the two biologically opposing arms of Yin (tumoricidal, apoptosis, growth arrest) and Yang (tumorigenic, wound healing or growth promote) pathways of acute inflammation or effective immunity [18, 22, 37–39, 44, 45, 62–65].
- f. Except for the results of a series of accidental discoveries that were established in 1980 s by Khatami and collaborators [22, 65, 88–92] there is little or no study to identify the early events in the loss of effective immunity that would progressively lead to tumorigenesis and angiogenesis. Analyses of the original data on experimental models of acute and chronic ocular inflammatory diseases are suggestive of the only direct evidence on inflammation-induced time course kinetics of developmental phases of immune dysfunction toward tumorigenesis and angiogenesis. In 2014, Khatami further demonstrated the only evidence on interactions and synergies between host and recruited

immune and non-immune cells toward tumorigenesis and angiogenesis [37]. It was suggested that the early events in immune dysfunction could be prevented, reversed or treated [22, 37–39, 45].

In summary, lack of systematic studies on multistep carcinogenesis and the roles that inflammation play in multistep carcinogenesis and concomitant generation of cellular genetic instability and mutations in site-specific tissues are primary scientific factors in failed therapeutics. As recently suggested [22, 37, 38, 46–52, 57–65] accumulation of ROS/RNS could significantly contribute to the impaired mitochondrial function, changes in bioenergetic that are required for maintenance of effective immunity or the balance between two highly regulated and biologically opposing arms termed Yin (tumoricidal) vs Yang (tumorigenic) arms of acute inflammation [37]. It should be noted that the effect of ROS/RNS are additional damages on genetic components at random site. In general, the claimed 'molecular targeted' therapies are potent apoptotic factors that would initially inhibit one or a combination of specifically designed growth factors which temporarily cause 'remission' or growth-arresting effects on tissues [22, 37–39, 62–66]. However, such drugs would induce an 'immune tsunami' or 'cytokine storm' throughout the body that destroy the structural integrity and function of vital organs such as the liver, kidneys, bone, muscle and vasculature with life-threatening side effects such as drug-resistant and cancer relapse, cachexia, sarcopenia, thromboembolism, often resulting in MOFs and death [18, 22, 62–65].

#### **Chemotherapeutic approaches using low molecular weight (LMW) agents: indiscriminate drug-distribution to normal and cancerous tissues**

The standard or classic cancer chemotherapy, using low molecular weight (LMW) drugs such as mitomycin C, doxorubicin, methotrexate alone, or even in combination with other drugs for treating solid tumor have not been successful. The toxicities of such drugs often distribute indiscriminately throughout the body with minor tumor-selective accumulation. In addition, except for preferential accumulation of doxorubicin in cardiac tissue, majority of such LMW agents produce systemic toxicity that damages various normal organs/tissues [33, 34, 54, 93–96]. Further increase in the drug dosage is not possible since the dosage level is already at or near their maximum tolerable levels as adverse effects would appear at higher dose. The drug-induced systemic toxicities, in all likelihood, are due to the severe damages to the functional and architectural integrities of tissues such as biophysical, bioenergetics, mechanical organizations and physiology of vital organs leading to significant

**Table 1 Mutation rate in human cancers Adapted and modified from Refs. [10, 25, 35].**

Cancer type	Mutation/tumor
Respiratory/lung cancer	200–300
Skin/melanoma	100–200
Esophageal/colon cancer	50–100
Pancreatic, ovarian	30–60
Breast	20–70
Hematopoietic cancer	1–10
(CML/AML/ALL/CLL) rhabdo/myo/sarcoma	1–3

Mutations of tumor cells were based on means of mutation in single patients (CML/AML/ALL/CLL) Soft tissue/rhabdomyosarcoma

destruction (suppression) of immune system including damages to bone marrow regenerative processes. The overall toxicities of such drugs on the metabolic and detoxification processes could progressively lead to severe damages to the function of normal organs such as the kidneys, liver, and heart, and it could further involve in coagulopathy and peripheral neuronal toxicity, as well as induction of diarrhea and bleeding.

It should be noted that with the exceptional effect of chemotherapy on seminoma as solid tumors, the classic anticancer drugs such as vinblastine, etoposide, bleomycin, adriamycin, *cis*-platinum, etc., are yielding more than 40–50% responses [84]. While the basis for this remarkable response is not clearly understood, focusing on such approaches may provide better direction for future drug development. Also the effect of BCG with combination of doxorubicin for bladder cancer has been accepted with response rate of more than 50% [79, 97, 98].

The effectiveness of these drugs perhaps is due, in part, to their influence on interdependent growth pathways of phosphatidylinositol 3-kinase (PI3 K)/AKT/mTOR, mammalian target of rapamycin and/or the suppressive effects of interleukin receptor activated kinase-M (IRAK-M) that cause induction of tolerance and growth promotion [22, 37–39, 65]. In addition, drug-induced increased immune suppression in patients facilitates cancer cells to further escape the immune system, resulting in enhanced growth promotion and cancer relapse and metastasis. The adverse effects of erythrocytopenia are often treated with erythropoietin. However, concerns on the induction of thrombosis cannot be ignored. Alternatively, red blood cell transfusion or iron supplement are used to treat erythrocytopenia [2, 3, 70]. Although, leukocytopenia are reasonably treated with granulocyte colony stimulating factor (G-CSF), other drug-induced systemic complications are difficult to control. Quantifying and understanding the molecular/cellular bases of

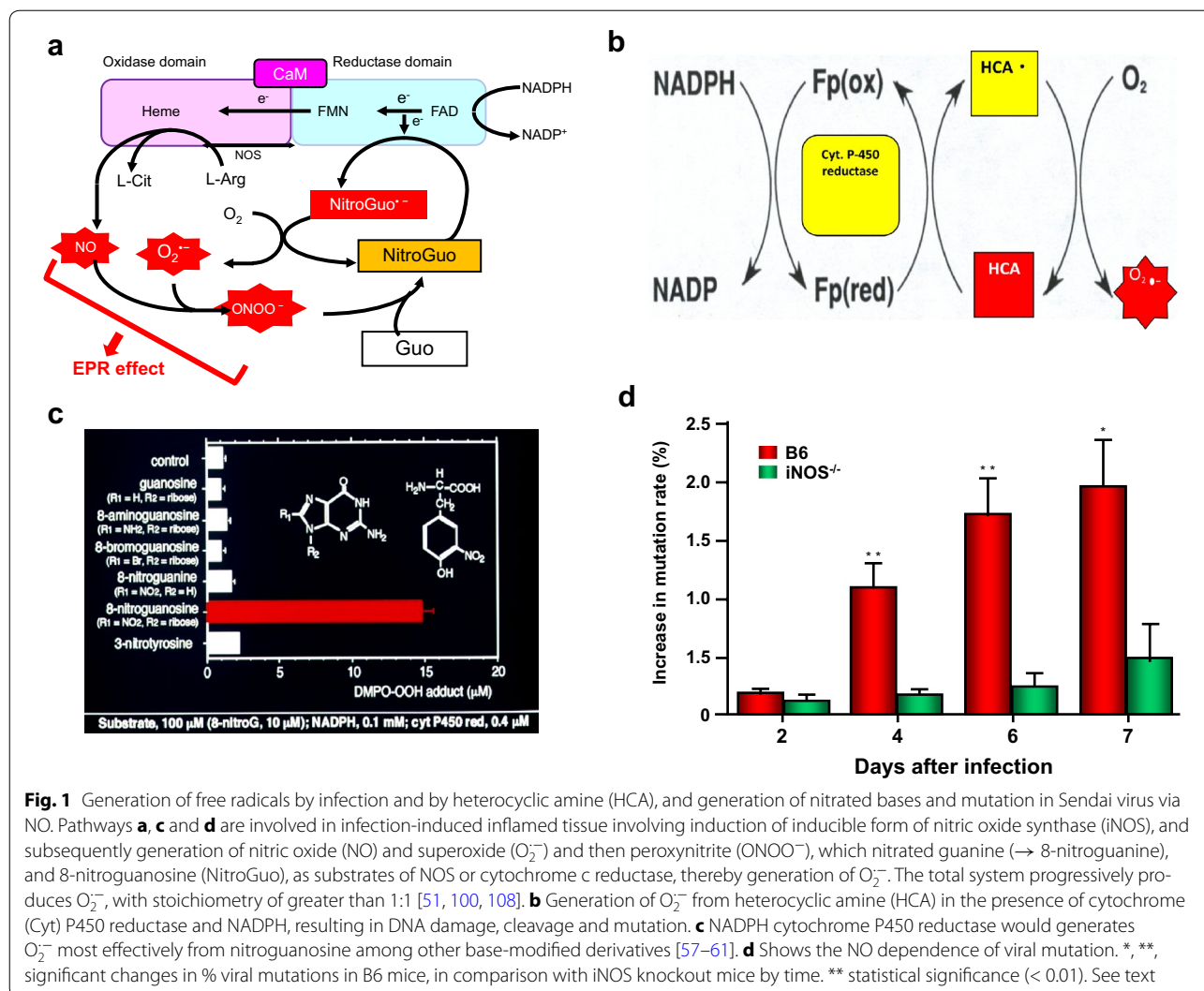
drug toxicity in vivo such as anorexia, cachexia, sarcopenia, bone-marrow suppression, fatigue or weakness, diarrhea, discomfort and pain are yet to be defined as these complications are as important factors in the induction of MOFs and increased morbidity and mortalities in patients, particularly at the progressive stages of the disease [2, 3, 18, 22, 36, 37, 43].

### Targeting genetic mutations in site-specific solid cancers that produced repeatedly failed outcomes while generated huge corporate profits

Molecular target drugs created great business motives for drug industry to focus on them in the last six decades. After revealing extremely high incidence of mutations in solid cancer (Table 1), very little scientific rationale has been presented for developing such costly molecular target drugs that are based on identification of too many evolving genetic mutations in the chaotic cancer environments. Use of fashionable words such as ‘targeted’ therapies, ‘personalized’ or ‘precision’ medicine are attractive for drumming up the support of policy makers and the public while highly lucrative for the decision makers [14–19, 21–24, 26–31, 37, 39, 44, 45, 65, 66] (see footnote 3–7).

One should keep in mind the followings basic biological events that occur in health and disease states of body’s organ systems:

- During normal oxidative metabolism of cell/tissue and function, accidental chemical modifications or genetic errors occur at the rate above 10,000 errors alone in single cell even in the absence of external genotoxic compounds [25–27, 35]. Concerns for cellular mutations that would lead to carcinogenesis often occur when combination of depyrimidination or deamination of cytosine or 5-methylcytosine adenine, guanine and related oxidation damages are at rates that are much higher than 10,000 base per cell per day [27].
- In general, chemical carcinogenesis or mutagenic chemicals interact with DNA or cross-link with segments of DNA, and directly impair DNA replication. Maeda’s group found that chemical carcinogenesis generates ROS or RNS via P-450 related enzymes (e.g., cytochrome P-450 reductase). In this system nitroguanosine acts as substrate to cytochrome b5 reductase or other NADPH reductase-like enzymes (including NO synthase) and generate  $O_2^-$ , that further trigger activation of NO synthesis, leading to generation of ONOO<sup>-</sup> (peroxynitrite) for effective generation of DNA nitrateguanine that would amplify reaction mechanisms (Fig. 1) [49, 56, 57].



**Fig. 1** Generation of free radicals by infection and by heterocyclic amine (HCA), and generation of nitrated bases and mutation in Sendai virus via NO. Pathways **a**, **c** and **d** are involved in infection-induced inflamed tissue involving induction of inducible form of nitric oxide synthase (iNOS), and subsequently generation of nitric oxide (NO) and superoxide (O<sub>2</sub><sup>-</sup>) and then peroxynitrite (ONOO<sup>-</sup>), which nitrated guanine (→ 8-nitroguanine), and 8-nitroguanosine (NitroGuo), as substrates of NOS or cytochrome c reductase, thereby generation of O<sub>2</sub><sup>-</sup>. The total system progressively produces O<sub>2</sub><sup>-</sup>, with stoichiometry of greater than 1:1 [51, 100, 108]. **b** Generation of O<sub>2</sub><sup>-</sup> from heterocyclic amine (HCA) in the presence of cytochrome (Cyt) P450 reductase and NADPH, resulting in DNA damage, cleavage and mutation. **c** NADPH cytochrome P450 reductase would generates O<sub>2</sub><sup>-</sup> most effectively from nitroguanine among other base-modified derivatives [57–61]. **d** Shows the NO dependence of viral mutation. \*, \*\*, significant changes in % viral mutations in B6 mice, in comparison with iNOS knockout mice by time. \*\*, \* statistical significance (< 0.01). See text

In general, chemical carcinogenesis or mutagenic chemicals interact with DNA or cross-link with segments of DNA, and directly impair DNA replication. Maeda's group found that chemical carcinogenesis generates ROS or RNS via P-450 related enzymes (e.g., cytochrome P-450 reductase). In this system nitroguanine acts as substrate to cytochrome b5 reductase or other NADPH reductase-like enzymes (including NO synthase) and generate O<sub>2</sub><sup>-</sup>, that further trigger activation of NO synthesis, leading to generation of ONOO<sup>-</sup> (peroxynitrite) for effective generation of DNA nitrated guanine that would amplify reaction mechanisms (Fig. 1) [49, 56, 57].

Figure 1 represents that NO-dependent viral mutant-formation per 500 plaque in B6 mice, showing green fluorescence protein (GFP)-encoded with Sendai virus infection, resulted in increase of nonfluorescent viral plaque in the lung. This event was compared with

iNOS-knockout mice (Fig. 1d) [51, 59]. In addition, Maeda's group demonstrated similar superoxide generation from highly potent mutagenic heterocyclic amines [99–101]. The observations further support the endogenous generation of ROS and RNS, in addition to direct intercalation with DNA and damages to other metabolic and bioenergetic pathways (see above) [22, 45, 65–69, 71].

The following are highlights of multistep carcinogenesis and current treatment approaches to cancer in experimental and clinical studies:

- a. The process of carcinogenesis with evolving mutations at multi-stages of cell growth often take anywhere between 10 and 30 years in human before taking over the machinery of dysfunctional immunity. Oxidative stress during aging process that would lead to immune dysfunction could cause generation and

accumulation of unrepaired genetic alterations leading to accelerated cell growth. As recently described, cancer cell enhanced growth requirements are satisfied under loss of balance in Yin–Yang of immunity that are associated with differential bioenergetic requirements from mitochondria for oxidative phosphorylation leading to mitophagy and autophagy and hypoxic conditions. The enhanced activities of glycolytic pathways for inefficient energy production (ATP) facilitate growth pathways (tumorigenic or Yang) of immunity [22, 37, 38, 44, 62–65].

- b. Advances in DNA sequencing technologies indicate that the average patient with site-specific solid tumors such as lung cancer, would have non-synonymous 200–300 mutations per tumor in single patient, while patients with esophageal, breast or colon cancer had somewhere between 50 and 500 mutations per tumor (Table 1) [10, 22, 25–27, 35]. Consequently, making decisions on such evolving high rates of mutations in human solid tumors make these approaches fraudulent (‘molecular false flags’) and irresponsible as evident from the high failure rate outcomes of ‘molecular target’ therapies [18, 22, 36–38, 44, 65]. The claimed molecular target drugs that aim at one or two specific mutations of growth factors, receptors, or enzymes, whether or not the mutations are at “driver seat” at the time they are identified would maximally have 1–3% chances of therapeutic success [29–34, 67, 68]. In addition, such incredibly worthless projects totally dismiss the biological compensatory molecular events of body [18, 22, 33–38]. For example, clinical trials using combination of two inhibitors of EGFR for treating colon cancer did not improve the efficacy compared with single agent, and they are not remarkably different from treating with conventional LMW drugs (shown above). Therefore, it is reasonable to conclude that molecular targeted drugs based on identification of one or few mutated genes or their expression products in the chaotic molecular landscape of cancers (cancer molecular tsunami) would produce very little to benefit the patients. It is not surprising that the outcomes of such expensive undertakings have failure rates ranging between 85 and 95% while causing life-threatening side-effects for patients and draining resources [4–6, 9, 10, 18, 22–29, 33, 34, 37–39, 63–65]. Analyses of similar data on cancer targeted therapies that apply combination drugs such as dasatinib, gemcitabine or debrafenive (debrafenib, or Tafinlar) alone vs. debrafenive + trametinib (Mekinist), for treatment of advanced biliary tract or lung cancers or metastatic melanoma show improved progression-free survival of only few months (8.8 v

9.3 mons or 11.4 v 7.3 mons) while the agents cause serious side effects. These are examples of marginal effects that are economically very costly with tremendous patients suffering [12, 14, 16, 18, 21, 22–25, 70].

- c. The inherent and diverse compensatory mechanisms of immune and non-immune systems (e.g., vasculature, metabolic and neuronal pathways) in patients treated with specific growth factor inhibition could induce expression of other growth factors locally and/or systemically that would lead to anemia, cancer relapse and metastasis [6, 18, 22, 34–39, 45, 48, 52, 62–65, 70]. Preliminary observations in experimental model of mouse tumors demonstrated that blocking VEGF by antibody caused suppression of tumor growth. However, as treatment with antibody discontinued, tumor growth resumed at similar rate (Maeda et al., unpublished data) suggesting antibody requirements to continue for unlimited period and long-term results may not be beneficiary anyway. Hypermutations occur more commonly and frequently in solid tumors, compared with soft tissue cancers and hematopoietic cells (Table 1) [5, 10, 17, 22, 25–27, 35–37, 45]. The latter has a very limited number of mutations and thus respond with higher degrees toward drugs such as Gleevec (imatinib), an inhibitor of protein tyrosine kinase for treating chronic myelogenous leukemia. However, even Gleevec-treated patients suffer from drug-resistant as the consequence of DNA mutations in the treated host at later stages. Recently many drugs developed for Gleevec-resistant patients have considerable success. Although it is an endless game but worth to pursue for better therapeutic for ultimate cure. While these efforts to control the drug-resistance to Gleevec may be encouraging, major motives behind such efforts, seem economical [5]. Furthermore, mogamulizumab, a monoclonal antibody against adult T cell leukemia/lymphoma (ATL) was reported much less effective, compared with imatinib. Currently, the effectiveness of mogamulizumab that is used in combination with conventional anti-leukemic agents makes interpretations of its true efficacy difficult [80]. Similarly, agents such as ipilimumab, that inhibit CTLA-4 for melanoma treatment, and nivolumab that inhibits PD-1 used for treating non-small cell lung cancer, melanoma and renal carcinoma have limited success (20–30% response rate) although drug-induced autoimmune diseases is a major concern [22, 36, 44, 76–79, 81–83].

Therefore, correction of genetic errors and mismatches are normally required for adequate molecular repair function at DNA and/or miRNA levels that also influence

post translational modifications throughout life. It is anticipated that if the number of chemical modifications on genome were to be excessive than normal under such conditions as exposures to infective agents, chronic inflammation, environmental, chemical or biological hazards, as well as pathogen-specific vaccines or drug-induced toxicity, particularly during aging, accumulation of defective cells and proteins (e.g., cancerous cells, non-functional proteins, senescent cells) create 'antigen over load' that would retard effective immunity, to varying degrees, leading to altered immune response profiles [18, 22, 27, 37–39, 44, 45, 48, 56, 62–66]. As detailed elsewhere, sustained oxidative stress and loss of balance in Yin and Yang of effective immunity could promote accumulation of molecular errors in tissues and increased damages to genomic stability [22, 44, 45, 52–66]. Oxidative stress-induced accumulation of genetic errors would lead to expression and co-expression of growth and apoptotic factors in susceptible tissues and create an 'immune tsunami' that further skew and alter bioenergetics, metabolic, hormonal and neuronal activities in susceptible tissues toward multistep carcinogenesis [18, 22, 62–65].

In summary, the designs of effective cancer clinical immunotherapeutic studies await acceptance of decision makers in cancer community that the inherent immune (cancer) surveillance that was recently defined as the balance between dual properties of Yin (tumoricidal) and Yang (tumorigenic) arms of effective immunity [18, 22, 44, 45, 62–65]. When immune surveillance loses its ability to arrest the growth of oncogenic (defective) cells, cancerous cells progressively and continuously mutate throughout multistep developmental phases of tumorigenesis, carcinogenesis and angiogenesis in susceptible tissues. The results would be progressive expression and co-expression of mismatched and unresolved growth-arresting (Yin, or tumoricidal) and growth-promoting (Yang, or tumorigenic) factors in the immune-responsive tissues (e.g., epithelial-mesenchymal, stroma, vascular endothelial). Unresolved inflammation would facilitate immune evasion and growth promotion of such cells/tissues toward the induction of neoplasia, pre-cancer polyp-formation, cancer, angiogenesis and metastasis [18, 22, 37–39, 44, 45, 62–65].

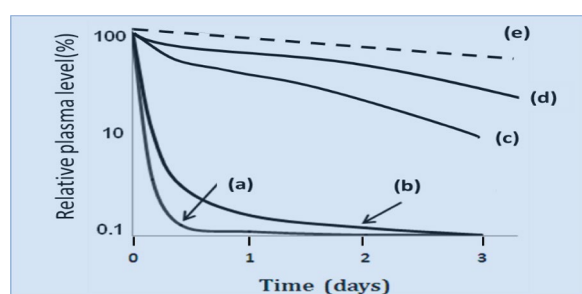
### **Cancer immunotherapy: better logics, same reductionist approaches: controversial understanding of immunity and inflammation**

Over the last few decades, cancer immunotherapy, including stem cell transplantation have emerged as the choice for curing cancer on the assumption that cancer cells possessing one or more new antigenic epitopes that could provoke immunological responses, similar to those of immune surveillance in normal host [5, 16, 22, 33, 34,

36, 65, 73, 74]. However, there is no dispute that cancer patients are immune compromised, to varying degrees [5, 16, 22, 33, 34, 52, 62–66, 83, 85–87]. The early approaches on cell-dependent immunotherapies were reported about 40 years ago in mouse tumor models utilizing iv infusion of in vitro activated cultured T cells or LAK cells into the host [85–87]. In these experimental settings, the treatment was successful only when the number of effector cells (E), that is cytotoxic T-cells (CTC) and natural killer cell (NKs) was 30- to 50-fold greater than the number of target tumor cells (T); that is, an E/T ratio of 30 or more was required for tumor regression. However, tumors in human frequently weigh 5–10 g or more. Therefore, it will require 150–300 g of activated T- or NK-cells for infusion. Such approach is therefore unrealistic for treatment of cancer patients. Although this treatment has not been approved by Japanese National Health Insurance, it is still performed in Japan and perhaps other cancer treatment centers around the world.

In cancer immunotherapy, adaptive and innate immune cells such as cytotoxic T cells (CTCs), natural killer cells (NKs) and dendritic cells (DCs) are applied to target T- or B-cell surface receptor molecules with the goal to treat site-specific cancers [22, 64, 66–71]. However, actual success in such approaches requires fundamental understanding of their use and identification and resolution of the current biological gaps that hinder effectiveness of treatment. The important knowledge gaps include identification of composition of host/target immune and non-immune cells, interactions and synergies between host and target tumor cells and understanding of the local and systemic responses that would be involved in specific treatment modalities [18, 22, 39, 44, 45, 65]. One should keep in mind that the outcomes of treatment methodologies using antibody-like molecules that mimic T-cell receptors (TCRs) on host T cell surface proteins that would suppress or arrest the growth; or applying lymphocyte-activated killer cells (LAK) may be different in different site-specific tissues. For example, lung airways, gut-associated lymphoid tissues (GALTs) or conjunctival-associated lymphoid tissues (CALTs) have immunological features that are different from those in liver, stomach, pancreas or non-muscle bladder tissues that potentially contribute to unsuccessful treatment or drug delivery technologies [18, 22, 37–39, 65, 66, 89, 93]. As such, the tremendous knowledge gaps on cellular compositions of target tissues and interactions, or synergies between host tissue and treatment options are likely to limit the effectiveness of such approaches [18, 22, 37–44, 62–65]. Furthermore, jury is still out on the outcomes and effectiveness of stem cell therapy and bone marrow transplant that are used for treating myelocytic leukemia on patients pre-treated with whole body radiation to destroy





**Fig. 2** Schematic representation of plasma concentration of different molecular size drugs [33, 34]: a low-MW free drugs (e.g., doxorubicin, DOX) and b–e their polymer complexes. The drug concentration in plasma after i.v. injection of low-MW drugs decreases rapidly (a). Representative polymer conjugates, micelles, and the liposomal drug (DOX) complex remain in the plasma at higher levels (b–e). However (b) shows a micellar drug of non-covalently encapsulated low MW drug which burst rapidly. Thus, no therapeutic benefit due to the EPR effect as its stability is too poor; (c) a styrene-co-maleic acid (SMA)-polymer covalent conjugate having better relative stability [103, 105]; (d) a more biocompatible polymer (HPMA) of pirarubicin conjugate [34]; (e) highly stable and biocompatible liposome complex such as Doxil<sup>®</sup>, showing high concentration in plasma for long period. This stable liposome complex is a pegylated stealth liposome. However, it is too stable and thus little drug release even after reaching to the target tumor, and thus only a limited therapeutic effect. Nano-size drugs (c–e) of high biocompatibility, having long plasma half-lifer, are advantageous for tumor selective targeting because they can utilize the EPR effect [33, 34]

majority of mutated blood cells. It should be noted that clinical effectiveness of using the overall immune activation by application of bacterial cell components (i.e., BCG) into the urinary bladder tract for bladder cancer seems a more logical approach as a worldwide established method [79, 97, 98]. However, even BCG has its adverse biological effects [22, 28, 39, 42–45, 97, 98].

### **Problem of liposomal and micellar drugs. Controversies in stability and drug release from liposomal or micellar complex of antitumor drugs in tumor accumulation**

Nanoparticle tumor targeting or delivery is based on the enhanced permeability and retention (EPR) effect [94–115]. EPR effect is a hallmark for targeted drug delivery of biocompatible nanomedicine or macromolecular drugs in tumor tissue [53, 96, 99, 103–109]. The effect can be observed in both primary and metastatic tumors. The EPR effect can be visualized in vivo tumor models or human tumors [99, 108]. The EPR effect reflects pathophysiology of solid tumor including defective vascular architecture, upregulated neoangiogenesis and excessive production of various vascular mediators. It is noteworthy that these factors are common immune disruptors and contribute to the immune dysfunction.

Evaluation of some drug encapsulated liposomes and micellar nanoparticles reveal another example of failed attempts in cancer chemotherapy. Nanotechnology-based nanomedicine has been the focus of great attention in the past couple of decades. Initially, liposome particles presented the poorest outcomes in the pharmacokinetics because of little considerations of the rapid clearance and removal of nanoparticles by phagocytic cells. However, current methods of attaching biocompatible polymers such as polyethylene glycol (PEG) to the surface of particles potentially protect them against this problem. However, in the in vivo setting, it is important that drug-encapsulated liposomes or nanoparticles remain stable and intact enough to reach to the target tissues without disruption of particles or micelles on its way to reach cancer clumps. Otherwise, the active component of LMW drug would often leak out from such particles during circulation and subject to rapid clearance by urinary tract or lymphatic channels, as well as potential decomposition by the liver and the bile. The possibility that particles would burst before reaching the target make such drugs to lose effectiveness while producing adverse effects similar to the parental LMW drug given iv as shown in Fig. 2a, b. In contrast, rigid or sturdy structures of stable particulate drugs such as Doxil<sup>®</sup>, a pegylated liposome-containing doxorubicin (DOX) are too stable and exhibit poor active-drug-release at the tumor tissue or reaching the tumor while resulting poor clinical outcomes [33, 110–112]. As demonstrated in Fig. 1b the iv injection of unstable micellar drug-complexes will be physically disrupted during circulation causing rapid release of the free drug into plasma with no time to achieve EPR effect, which is a time-dependent process. In contrast, covalently linked nanodrugs or micellar drugs have better plasma stabilities in vivo. Figure 1, demonstrates range of plasma concentrations of LMW free drug, such as free DOX or pirarubicin (THP) in respective polymer complexes in vivo.

The use of micellar drug (e.g., NK-911) (Fig. 1b) failed at an early clinical stage due to its insufficient stability, as it bursts too rapidly; losing nearly 50% of its concentration within 1 h after iv injection, and producing no benefit of the required EPR effect [113]. The same logics apply for another biocompatible polymer DOX-conjugates, i.e., HPMA polymer-DOX conjugate (PK1), ~30 kDa molecular size, which failed to produce adequate circulation time required for EPR effect [93–95, 103, 104, 107, 110]. In general, polymers with apparent molecular weight of less than 40 kDa would be too small to produce any effective EPR effect for tumor targeting.

Another example of confusing outcome is a drug designed for macromolecular size, based on the EPR effect for tumor-selective accumulation. In this approach,

the micellar agent, fluorescein isothiocyanate (FITC) is covalently linked to a polymer-carrier, while the micelle also contained non-covalently encapsulated candidate-drug (tritiated paclitaxel [PAX]) [99, 104, 107]. The *in vivo* results showed accumulation of PAX at tumor site was close to null. The non-covalently encapsulated low MW PAX could leak out rapidly from the micelles in the presence of NaCl or blood. However, had paclitaxel covalently linked to the polymer it would have selectively accumulated in the tumor site, as seen in FITC conjugated polymer-chain as the proof of the EPR effect [102, 107].

Therefore, designing effective macromolecular drug complexes requires considerations to include that the selected drugs are stable enough and possesses sufficient biocompatible property, with effective tumor accumulation by EPR effect of the targeted tumors. After delivery in tumor tissue, appropriate drug release need to be incorporated in such drug-complexed nanoparticles [33, 34, 53, 102].

In summary, despite decades of enthusiasm for nanomedicine including liposomal, micellar and polymeric drug complex, there are several problems that need to be addressed. To be effective, such molecular complexes should possess special features, including:

- a. Retain at high levels in plasma for adequate duration (several hours to a few days) having suitable biocompatibility to be utilized for EPR effect;
- b. Molecular weights (MW) of macromolecules be above 40 kDa (above renal threshold);
- c. Complexes would be capable of clearance by lymphatic system in normal tissues, in contrast to cancerous tissue; and
- d. Complexes capable of extravasations at the tumor's 'leaky' vasculature (angiogenic) sites while allowing adequate liberation of free drug (AP's) at tumor site, via potential accessible or up-regulated membrane transporter systems (cell-uptake) on tumor cells [33, 34, 102].

Furthermore, there are great differences on cellular uptake rates of different low MW drugs. For example, free pirarubicin (THP) exhibits over 30- to 100-folds higher cellular uptake into tumor cells (pancreatic SUI-2) compared with free DOX, although both belong to the anthracycline family in which a specific transporter system (e.g., glucose transporter) is highly up-regulated for THP uptake in some tumor cells [95, 102, 114]. Therefore, application of polymer-THP-conjugates seems more advantageous compared with polymer-DOX-conjugates.

### Problems with cancer drug screening and safety in rats and mice: limitations for clinical efficacy in human

Details of the problematic issues in cancer drug discovery and screening methods using experimental mice or rats models of site-specific tumors have been recently reported [22, 44, 115–121]. The major concerns on drug screening are safety and therapeutic efficacies, as well as ethical and financial considerations of decision makers who apply the results that are produced in small animal models in clinical trials to test various anticancer agents in patients which repeatedly failed. The principal concerns with the use of anticancer drugs in clinical trials are briefly discussed below:

- a. Traditionally, drug development for chronic diseases (e.g., diabetes, hepatitis C, malaria or HIV/AIDS) used chimpanzees as experimental models of human diseases and for drug evaluation purposes. These primates are genetically, behaviorally and biologically the closest animal species to humans. However, in the last few decades, nearly all experimental models of cancer drug screening, safety and efficacy evaluation are performed in lower animals such as rats and mice. The drug screening, efficacy and toxicity of candidate drugs, e.g., monoclonal antibodies against specific growth factors, inhibitors of receptor molecules or kinases, are performed by nu/nu genetic engineered animals, primarily in mice, tissue cultures, or in test tubes, but usually not in chemically-induced autochthonous models. Consequently, as expected the pharmacokinetic parameters or compatibilities of the drugs tested in lower animals are vastly different from those in cancer patients with regard to time scale and immunobiological response profiles and tolerance [22–24, 44, 115–117, 121]. For example, drug screenings are routinely tested in mouse peritoneal leukemia L1210 and P388 models. In such studies, tumors are implanted intraperitoneally (ip), and the drugs also administered via the same route. In such cases, a given drug is likely to be readily accessible to tumor cells in the peritoneal cavity. Under these conditions, pharmacological properties of drugs such as plasma level, tissue distribution, inactivation or clearance from the liver and kidney, and access to vasculature do not pose any serious problem. Consequently, in the ip (tumor)/ip (drug) system, one might demonstrate the desired immediate drug action in tumor cells. These traditional approaches, although better than screening *in vitro* tumor-cell-panels, totally ignore and downplay the complexity of human solid

- tumors with complex cellular, stromal or matrix and vascular architectural features of the tumor micro-environment including the neoangiogenesis and vascular permeability, hypoxia, low pH, induction of altered immune and non-immune response dynamics, various proteases that cancer cells excrete, coagulation and cellular clumps of disorganized adhesion properties of cancer cells.
- b. The anatomical sites used for implanted tumors in mice and the role that vasculature plays will pose differences in efficacies. Implanted tumors are frequently located in the skin or muscle at early stage of development, and not in the orthotopic sites for the primary cancer sites. As a result, one may reasonably question such tests since the drug access to vasculature in experimentally selected sites (e.g., skin) in mice or rats, differ from those cancers developed in the lung, kidney or liver even in mice, let alone in patients which have complex multi-layered architectural organizations and anatomy [115–117]. It is worth emphasizing that even renal cancer cells or hepatoma cells implanted in the muscle tissue of mice do not possess the same features of vascular network, comparable to the kidney or the liver, respectively. In addition, metastatic tumor models are rarely used for drug screening purposes, although it should be the focus of testing if the purpose of screening is the control of advanced stages of cancer [115–117].
  - c. Another problem is the mouse model itself, which is usually a syngeneic system or nude mouse model, when used for studying human xenograft system. Except for identical twins, there are no syngeneic humans. In the syngeneic mouse model, the human tumors (xenobiotic) usually exhibit immunological compatibility with the host mice. Therefore, a host reaction to a xenobiotic tumor is often absent because the tumor would be immunologically inert. Furthermore, the mice implanted with human xenograft tumors do not react immunologically as do the human tumors. In addition, the time scale for tumor development between human and mice are not comparable at all. The so-called window model, using implanted solid tumor in a confined space, i.e., squeezed between two plates of Lucite, is only applicable for very limited cases as tumor is physically so compressed in a confined space and the physical pressure will be built up as artifact. For these reasons, such tumor models represent artifacts, particularly because the doubling time of rodent tumors is so short that it will quickly and physically saturate the space, hence tumor-induced interstitial pressures will be compressed and are not at all comparable to human tumor growth.
  - d. Experimental mouse tumors grow rapidly; that is not usually the case with human tumors. Implants of  $5 \times 10^6$  tumor cells in a mouse reach a palpable size in about a week or so, whereas human tumors often take months or years to reach a sizeable tumor. There also are 10- to 50-fold differences in doubling time for tumor growth; a few days in mice, and 30–100 days in human. Therefore, relatively fast release of drug from nanoconstructs or liposomes will be found best rate for drugs in mouse system but not suitable for patients.
  - e. The most common endpoint of drug screening system in mice is prolongation of survival rate but not the cure rate, when compared with control group receiving no drugs, in which all mice in test group would eventually die. Complete cure with anticancer agents; claimed ‘targeted’ therapy, ‘precision’ or ‘personalized’ medicine is rarely known, particularly with metastatic solid tumors. The endpoints of cure rate with longer period of more than 100 days in mice, with no recurrence of tumor rarely seen. Investigators should adapt a model that is comparable to the antibiotic-drug-development for infectious diseases decades ago.
- In summary, autochthonous or chemically induced models of breast, colon, or liver cancers may offer more realistic tumor models, compared with transplanted syngeneic tumor models. The drug screening designs have little/no considerations for the effect of drug against metastatic tumors, which is by far the most critically important and formidable stage of disease that spreads to distant sites, often beyond surgical removal, while the primary tumor can often be successfully removed by surgery. In general, using mice model may be somewhat more suitable for drug tests for HIV/AIDS patients, having specific immunological response (e.g., T cells) complications to overcome, when compared with cancer patients with multistep immunobiological, metabolic, neuronal and cellular complications. As detailed in recent reports, cancer patients primarily suffer from the severe loss of effective immunity or the balance between Yin (tumoricidal) versus Yang (tumorigenic) properties of immune system that involve loss of oxidative phosphorylation and bioenergetics in mitochondria (mitophagy), enhanced metabolism of glucose (e.g., Warburg glycolysis), loss of cell contact inhibition and altered architectural integrity of site-specific tissues which are advantageous for parasitic survival of cancer cells [22, 44, 45, 62–66]. As proposed below, the above scientific concerns should be taken into consideration for effective systemic chemotherapeutic approaches that could offer serious hope for treating patients.

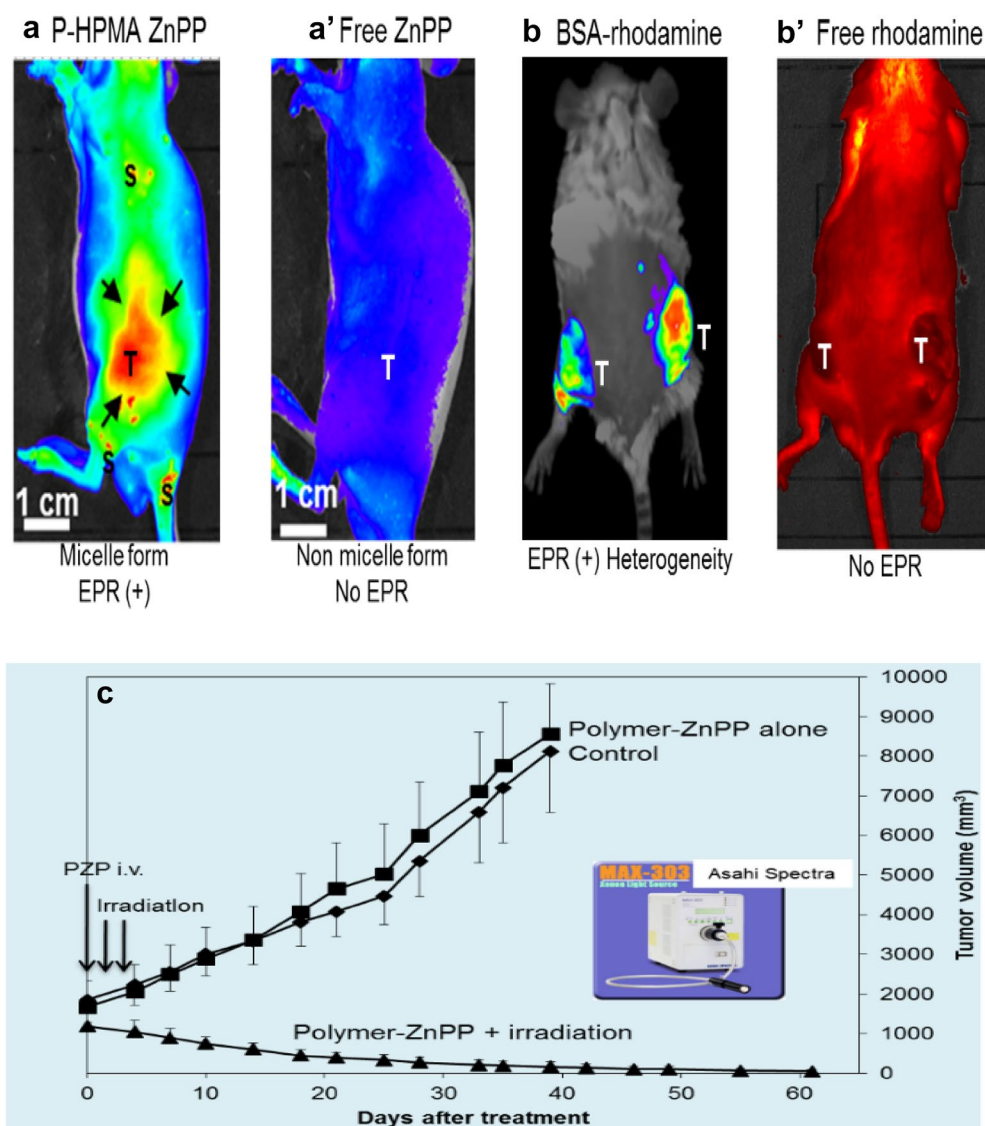
### Controversies and bias in conducting clinical trials: over-diagnosis, crossovers and randomization of protocols

Patient eligibility to enter the clinical trials most frequently involves stages I and II of the disease. As recently reported [6–9], stage I or even stage II diagnosis for cancer patients are often over-diagnosed. In general, adverse effects of drugs in healthier population are less compared with those observed in patients at advanced stages of the diseases (stages III and IV). Furthermore, ethical concerns and pitfalls regarding the crossover trials that allow patients to switch from control to experimental arms, for receiving investigational drugs remain a serious problem. A reason is that the adverse effects of previously administered drug could not be readily washed out in the body within a month or so, therefore treating patients with a second drug after 1 month may be more hazardous [7–9, 13–17]<sup>8</sup>. The vast differences and bias in the randomized trials using surgical procedures of site-specific cancers, as well as the biological, pharmacological and intrinsic activities of experimental drugs generated in the body would make such crossover trials senseless, if not harmful for the patients [7–9, (Khatami, manuscript in preparation)]. For example, sunitinib is an inhibitor of VEGF for treating renal carcinoma, while iniparib is an inhibitor of DNA polymerization and synthesis [poly(ADP-ribose) polymerase (PARP)] for treating triple-negative breast cancer. These drugs have very different mechanisms of action [3, 4, 6–10] (see footnote 8). Patients suffering from advanced renal cell carcinoma, initially treated with IFN- $\alpha$  might have improved survival outcomes from crossover strategy with sunitinib, as both drugs have potential additive effects in inhibiting VEGF [14–17]. However, using iniparib in crossover trials is not effective for patients with triple-negative breast cancer [3]. One should keep in mind that in general, PARP inhibitors (iniparib) lack intrinsic value for solid tumor. Such drugs are ineffective for BRCA1 and BRCA2 mutations [3, 13–15]. The goal for treatment with iniparib in crossover trials should be potentiating the activities of traditional ‘backbone’ drug in combination and beneficiary to the patients, but they are not. For example, reports for trials that use combination of gemcitabine plus carboplatin, showed outcomes of progression-free survival of only 3.6 months reported for control arm (almost insignificant, and no cure). Furthermore, analyses of data on the outcomes of crossover trials using iniparib, for its effect on sensitization of temozolomide (bevacizumab) in glioblastoma xenograft or clinical targeted therapies of advanced glioma are inconclusive [3, 14–16, 118–120].

### Photodynamic therapy (PDT). A century-old history and little tangible advancement

Photodynamic therapy (PDT) for treating diseases is known for more than a century. Indeed, N.R. Finsen received the Nobel Prize in Medicine and Physiology in 1903 for his novel phototherapy of dermal tuberculosis. PDT was expanded to treat cancer about half a century ago, as the use of helium-neon (He–Ne) laser that emits monochromatic light at 633 nm became commercially available. The key component required in PDT is excitation of photosensitizers by appropriate wavelength in the tumor tissue. Most of currently used photosensitizers are derivatives of tetrapyrrolic compounds [121–124]. They require excitation-light around 400–450 nm for optimal effects [121–124]. For cancer treatment, penetration of light (400–500 nm) into cancer tissue is a prerequisite to generate singlet oxygen (ROS). The currently applied He–Ne laser light sources for PDT fail to fulfill the basic principle of spectroscopy for crucial points: Commercial photosensitizers for PDT such as Laserphyrin<sup>®</sup> and Photofrin<sup>®</sup> have Soret band of absorption range that produce both intense fluorescence and singlet oxygen (<sup>1</sup>O<sub>2</sub>). However, excitation by He/Ne laser, which emits only at 633 nm, but does not emit at wavelength of 400–450 nm, thus not satisfy the optimal spectroscopic requirements for most efficient generation of singlet oxygen for effective therapy [122]. It should also be mentioned that not all tissues, particularly cancer tissues, are similarly loaded with heme components, like in the normal liver, spleen and blood. When the tissue surface of, for instance, breast cancer is observed visually, or colon cancer by endoscope, the solid tumors exhibit no reddish appearance. As a matter of fact, when we used xenon light of 400–450 nm range directly over the breast cancer it did not penetrate sufficient dose of light into the breast cancer in rats, and cancer was completely eradicated (Fig. 3c) [99, 108, 122, 123]. As described above for EPR effect, the currently used photosensitizers use molecular weights less than 1000 Da [121–124]. Thus upon iv infusion, they are distributed nearly indiscriminately throughout the body [93, 94, 96, 103] providing no EPR effect and little tumor selectivity. Figure 3a, b represent results of macromolecular-model compound of photosensitizers for tumor selectivity in comparison with low MW counter parts. Using low MW photosensitizer, while producing no remarkable antitumor effect, the patients are advised to avoid exposure to ambient daylight as it is expected to damage the skin with hypersensitivity reactions of the exposed areas. On the contrary, when polymeric photosensitizer and light source (around 430–450 nm) irradiation were used for rat breast cancer in vivo, it produced clear fluorescent tumor image and significant tumor regression [122–124].

<sup>8</sup> Summary Health Statistics for U.S. Adults: CDC, National Health Interview Survey (2011).



**Fig. 3** Superiority of macromolecular photosensitizer: **a** polymer (HPMA)-conjugated zinc protoporphyrin (ZnPP) and **b** bovine serum albumin (BSA)-conjugated rhodamine. Fluorescence shows as visible only in tumors (**a**) and (**b**) (T marks). However, when both low MW photosensitizer, free ZnPP (**a'**), and free tetramethylrhodamine (**b'**) in tumor-bearing mice are injected iv, no tumor selective fluorescence image was visible. Macromolecules, namely polymer-(HPMA) ZnPP and BSA-rhodamine with apparent MWs about 50–70 kDa, respectively, selectively accumulated in tumors, because of the EPR effect, as shown by in vivo fluorescent imaging system; Contrary to above, free ZnPP and free rhodamine, with MWs less than 1000 Da, showed little tumor uptake (**a'**, **b'**). **c** Demonstrates therapeutic effect of PDT treatment using polymeric ZnPP and endoscopic xenon light irradiation. Tumors used were chemically (diaminobenzene[*a*]anthracene) induced breast cancer in rats. Polymer-ZnPP alone or light irradiation alone respectively has no therapeutic effect [99, 122] (Figures were adapted from Refs. [99, 122] with permission)

**Prohibitive costs of cancer therapy with repeatedly failed outcomes. Economic impact on medical insurance, and unbearable burden to the society**

A serious problem in current cancer chemotherapy involves the cost of care for cancer patients, particularly the astronomical costs of recently claimed molecular ‘targeted’ drug, ‘personalized’ or ‘precision’ medicine with outcome failure rates of 85–95% [5, 22, 37, 39, 40,

44, 65, 66] (see footnote 1–8). While majority of such drugs produced no reasonable benefit to meaningfully extend survival of cancer patients, particularly those with solid tumors, they are tremendously costly for the patients, their families and the public [2–8, 13, 18, 20–22, 24, 32, 37, 39, 44, 65–67, 98, 125–127, 131, 132]. Cancer ‘designer’ drugs cost between \$100,000–\$1,000,000 (USD) per course of treatment. For example, nanomedicine type

anticancer agents such as Doxil<sup>®</sup> and Abraxian<sup>®</sup> cost on average \$5000 per injection, that is about 10 times the cost of the parent drugs (doxorubicin and paclitaxel, respectively), without significant survival benefit. The drug makers' 'rational' is that the complex drugs provide more tolerable toxicity for Doxil<sup>®</sup> compared with free doxorubicin! [125–127].

In the Japanese National Health Insurance System, all patients are eligible to receive government-approved medications and treatments. However, patients must pay out-of-pocket for all medical and hospital costs, if any unapproved medicines were used in conjunction with ongoing/approved treatment. Thus, patients who use any additional unapproved medications lose all privileges of receiving the insurance benefits, even though the particular procedure could potentially provide the needed therapy with proven benefit. For instance, concomitant use of nitroglycerin together with low MW chemotherapeutic agents, significantly benefits the patients with marginal cost [126–130]. It is noteworthy that currently, the total medical expenditure is near 90% of the Japanese National income revenue in 2012 [131]. The government is faced with decision, either to cut this heavy burden for paying the ineffective therapeutic modalities, or alternatively raise the public income-taxes. In the United States, nearly half of the reported personal filings for bankruptcy are due to high cost of medical care resulted from astronomical cost of drugs, hospitalization, medical procedures and patient care [22, 44, 125–127].

Concerned voices of independent and competent professionals, oncologists and scientists that are raised for seeking the truth in cancer science, on behalf of the cancer-stricken public for changing the directions in cancer research or therapy or safety and unethical motives behind development of pathogen-specific vaccines (e.g., HPV, flu, meningitis) that repeatedly failed cannot be ignored or silenced any longer by policy/decision makers [2, 21, 22, 44, 65, 66, 125, 127]. To lessen the heavy burden of costs, for Japanese complex insurance policies, we recommend that the unapproved but potentially effective and safe drugs should become available to cancer patients. The public insurance system should remain continuing coverage of the cost of those drugs that are already approved and marketed for different indications, while those who are willing to undergo treatment with additional experimental drugs, pay out-of-pocket for the cost of drugs that are yet to be approved. It is anticipated that such methods of payment reduce the cost of care for patients who need additional drugs, while the Japan National Health Insurance System can avoid increased debt. We also suggested that the USA policy makers and medical/cancer establishment to return to 'common

sense' that our forefathers used to serve the public [22, 39, 44, 66].

### **Future perspectives: logical, systematic and cost-effective approaches to cancer research and therapy**

Lack of systematic approaches to cancer biology is perhaps the principal reason for the extremely slow progress in understanding cancer science, evidenced by high failure rates in cancer therapy and associated loss of millions of lives and tremendous economic burden to the society. The approaches to drug development that are inhibitors against specific growth factors, receptor-molecules or enzymes and are identified in the chaotic and disordered molecular environments of site-specific tumors or current approaches to pathogen-specific vaccines are considered 'molecular false flags' based on false foundation. These worthless schemes remind us the USA congressional debates of 'building bridges to nowhere' [18, 22, 37, 65, 66]. Decision makers of such thoughtless approaches totally ignore biological consequents of body responses and the extensive harms that are induced to immunity when patients are treated with combination of total (or partial) body radiation and targeted therapy ('designer drugs') [18, 22, 39, 65, 66].

Recent paper by Prasad and colleagues [132] supports our scientific concerns that despite reported reduction in disease-specific mortality, the overall mortality was unchanged or increased. Many cancer drugs would initiate or accelerate other causes of death such as disseminated intravascular coagulation (DIC) and multiple organ failures (MOFs) as the consequences of complications such as extreme fatigue or infections, interstitial pneumonia, acute cardiac arrest or cachexia, often resulting in loss of patients lives. Nearly all other claimed molecular targeted therapies that are heavily publicized and funded, focus on identification of infinite genetic mutations in site-specific solid cancers, produced little, if any, success to benefit cancer patients. Majority of such drugs that often accompany total or partial body radiation therapy produce biological poisons to the already immune-compromised patients. The drugs, not only produce life-threatening side effects, but they are extremely costly for patients and insurance companies.

Below we outline that future systematic approaches to study the amazing complex role of immune disruptors-induced initial immune dysfunction toward multi-step carcinogenesis that are intimately associated with angiogenesis (hallmark of tissue growth, hypoxia and altered bioenergetics) offer tremendous opportunities for research and therapeutic considerations [22, 36–39, 56, 65–67, 108, 126–154].

- a. Modalities that utilize nanotechnologies for tumor-selective drug delivery, based on the EPR effect with full consideration of tumor environments. Utilization of tumor environments for tumor-selective drug accumulation include the lower pH of tumor tissue (1–1.5 units) compared with normal tissue (pH 7.4). In addition, the unique features of upregulated glucose transporter in tumor provide good targets using glycosyl-containing moiety for drug development. Furthermore, hypoxia that is the result of embolized blood flow in solid tumor vessels may be restored by nitro agents or alike, to improve the blood flow and drug delivery. Acidic environment of tumor are suggested suitable site for EPR and cleavage by hydrolytic enzymes (e.g., cathepsin, MMPs, etc.), or spontaneous cleavage of acid labile bonding (e.g., hydrazone, ester bonds) between linker polymers and desired drugs.
- b. Systematic studies to understand immune disruptors-(oxidative stress) induced initial pathways in developmental phases of immune dysfunction in the direction of multistep tumorigenesis and angiogenesis. Effective immunity was defined as the balance between two highly regulated and biologically opposing arms, Yin (tumoricidal) and Yang (tumorigenic) properties of acute inflammation, an amazingly precise signal communications between immune and non-immune systems. The Yin and Yang events were hypothesized requiring differential bioenergetics at different stages of life, from fetus growth, after birth toward adulthood and aging process or chronic diseases. Unresolved inflammation was described as a common denominator mapping aging process and the induction of ‘mild’, ‘moderate’ or ‘severe’ immune disorders including cancers. Detailed understanding of the loss of balance in tumoricidal (Yin) and tumorigenic (Yang) properties of effective immunity that guards health should be the focus of future studies.
- c. Details of pathogen-host interactions and immune response profiles in susceptible tissues. We recently proposed that chronic inflammation causes release of histamine at local and distant tissues altering numerous other immune responses and the acid-base behaviors in tissues including vasculature. Histamine was proposed as blue print in the genesis of ‘mild’, ‘moderate’ or ‘severe’ immune disorders including site-specific cancers.

The above logical approaches to therapy and basic research on complex biology of effective immunity are expected to result in the design of cost-effective projects for understanding not only the cancer biology or how to prevent or control (treat) it, but also effective approaches

for development of universal vaccines and overall promotion of health. Furthermore, systematic approaches in understanding effective immunity are expected to lay a foundation for minimizing or delaying the onset of nearly all other chronic and preventable diseases for the aging populations around the world [22, 36–39, 43–45, 65, 66].

### Concluding remarks

The focus of this perspective was to assess the limitations of current therapeutic approaches to cancer. We presented scientific analyses of the disturbing data on the outcome failure rates of 90% ( $\pm 5$ ) on current therapeutic approaches for solid tumors. In the last six decades, only limited success was achieved with drugs such as Gleevec or few other modalities that used for treating patients with hematopoietic cancers and soft tissue or seminoma.

The future logical directions for cancer science and therapy to be beneficiary to the public should focus on restoration of immune surveillance, the body’s protective mechanism for killing cancerous cells. The claimed ‘targeted’ therapies that may or may not extend remission of cancer for a few months should not be accepted any longer as ‘cure’ by oncologists, scientist or patients. These tremendously costly projects totally disregard the suffering and life-altering experiences of patients and their families or caregivers [18, 22, 28, 32, 37, 39, 44, 65, 66, 125–127, 154]. Torturous period of survival overwhelms the benefit of postponing ‘death-sentence’ of patients for few months. It is important to seriously consider that the cost for conducting too many out-of-focus projects including usage of specific detection technologies for ‘targeted’ or ‘designer’ drugs that repeatedly failed patients has increased 340 time in the last 10 years, while accomplished very little. This horrendous view for making profit out of misery of patients can no longer be sustained or tolerated.

Another serious concern in process of drug development, however wrong, is the long processes and delays in obtaining patents, proprietary and approval for new drugs. In most countries, exclusivity of proprietary for marketing a specific drug often guaranteed for up to a decades. We propose abolishing the currently imposed regulations of drug patent system with the goal to accelerate generic drug development and improved access of drugs to patients. Often the industry manages to extend blocking the patented drugs for unlimited time, for maintaining the marketed drug prices at sky high and for high profits.

### Abbreviations

ALL: acute lymphocytic leukemia; AML: acute myelogenous leukemia; BCR: breakpoint cluster region; BRCA: hereditary breast cancer gene; CLL: chronic lymphocytic leukemia; CML: chronic myelogenous leukemia; DIC: disseminated intravascular coagulation; DOX: doxorubicin; dTNFR: decoy receptor of

tumor necrosis factor; EGF: epidermal growth factor; EPR: enhanced permeability and retention; HPV: human papilloma virus; HPMA: *N*-(2-hydroxypropyl) methacrylamide; iv: intravenous; LAK: lymphocyte-activated killer cells; LMW: low molecular weight; MCs: mast cells; MMPs: matrix metalloproteinases; MOF: multiple organ failure; NK: natural killer; NO: nitric oxide; NO<sub>2</sub><sup>-</sup>: nitrite; O<sub>2</sub><sup>-</sup>: superoxide anion radical; PAX: paclitaxel; PDT: photodynamic therapy; PEG: polyethylene glycol; PG: prostaglandin; PI3 K: phosphoinositol-3-kinase; PS: photosensitizer; QOL: quality of life; RO: alkoxyl radical; ROO: alkylperoxyl radical; ROS: reactive oxygen species; SMA: styrene-co-maleic acid polymer; mTOR: mammalian target of rapamycin; TCR: T cell receptor; THP: tetrahydropyranil doxorubicin (pirarubicin); TLRs: Toll like receptors; VEGF: vascular endothelial growth factor; ZnPP: zinc protoporphyrin.

#### Authors' contributions

HM and MK co-designed and wrote the manuscript, they both revised the manuscript. Both authors read and approved the final manuscript.

#### Author details

<sup>1</sup> BioDynamics Research Foundation, Kumamoto University (Med), Kumamoto, Kenshin Bldg 3F, Kuwamizu 1-chome, 24-6, Chuo-ku, Kumamoto 862-0954, Japan. <sup>2</sup> Osaka University Medical School, Osaka, Japan. <sup>3</sup> Tohoku University, Sendai, Japan. <sup>4</sup> Inflammation, Aging and Cancer, National Cancer Institute, The National Institutes of Health, Bethesda, MD, USA.

#### Acknowledgements

Laboratory studies of Mahin Khatami were established at the University of Pennsylvania, School of Medicine, Department of Ophthalmology, Philadelphia, PA; supported by NEI/NIH (RO1 EY03984, RO1 EY03984-05S1, RO1 EY01244-14S1) in 1980 s; detailed analyses of data were extended at the National Cancer Institute (NCI), the National Institutes of Health (NIH), Bethesda, MD since 1998, despite heavy opposition to promote the role of inflammation in cancer research and therapy by upper managers at NCI/NIH. Research Grants for Hiroshi Maeda were supported by the Ministry of Education, Culture, Sports, Science and Technology (MEXT), Japan, No. 17016076 for cancer specialty grant, AS242Z01542Q for A-STEP, and by the Ministry of Health, Labor and Welfare (MLHW), Japan, No. 3rd Anticancer Research-General 001.

Mahin Khatami has been retired from The National Institutes of Health

#### Competing interests

The authors declare that they have no competing interests.

#### Availability of data

Not applicable.

#### Ethics approval and consent to participate

Not applicable.

#### Funding

Provided as N/A.

#### Publisher's Note

Springer Nature remains neutral with regard to jurisdictional claims in published maps and institutional affiliations.

Received: 16 January 2018 Accepted: 31 January 2018

Published online: 01 March 2018

#### References

- Summary Health Statistics for U.S. Adults: National Health Interview Survey (2011)
- Amiri-Kordestani L, Fojo T (2012) Why do phase III clinical trials in oncology fail so often? *J Natl Cancer Inst* 104:568–569
- Fojo T, Amiri-Kordestani L, Bates SE (2011) Potential pitfalls of crossover and thoughts on iniparib in triple negative breast cancer. *J Natl Cancer Inst* 103:1738–1740
- Amiri-Kordestani L, Basseville A, Kurziel K, Fojo AT, Bates SE (2012) Targeting MDR in breast and lung cancer: discriminating its potential importance from the failure of drug resistance reversal studies. *Drug resist update* 15:50–61
- Ledford H (2011) Translational research: 4 ways to fix the clinical trial. *Nature* 477:526–528
- Rodgers GM III, Becker PS, Blinder M, Cella D, Chanan-Khan A, Cleeland C, Coccia PF, Djulbegovic B, Gilreath JA, Kraut EH, Matulonis UA, Millenson MM, Reinke D, Rosenthal J, Schwartz RN, Soff G, Stein RS, Vlahovic G, Weir AB III (2012) Cancer- and chemotherapy-induced anemia. *J Natl Compr Canc Netw* 10:628–653
- Stensland KD, McBride RB, Latif A, Wisnivesky J, Hendricks R, Roper N, Boffetta P, Hall SJ, Oh WK, Galsky MD (2014) Adult cancer clinical trials that fail to complete: an epidemic? *J Nat Cancer Inst* 106(9):dju229. <https://doi.org/10.1093/jnci/dju229>
- International Agency for Research on Cancer (IARC) (2014) WHO, Press Release, Lyon/London, 3 February
- Garas G, Markar SR, Malietzis G, Ashrafian H, Hanna GB, Zacharakis E, Jiao LR, Argiris A, Darzi A, Athanasiou T (2018) Induced bias due to crossover within randomized controlled trials in surgical oncology: A meta-regression analysis of minimally invasive versus open surgery for the treatment of gastrointestinal cancer. *Ann Surg Oncol*. 25(1):221–230. <https://doi.org/10.1245/s10434-017-6210-y> (Epub 2017 Nov 6)
- Gerlinger M, Rowan AJ, Horswell S, Larkin J, Endesfelder D, Gronroos E, Martinez P, Matthews N, Stewart A, Tarpey P, Varela I, Phillimore B, Begum S, McDonald NQ, Butler A, Jones D, Raine K, Latimer C, Santos CR, Nohadani M, Eklund AC, Spencer-Dene B, Clark G, Pickering L, Stamp G, Gore M, Szallasi Z, Downward J, Futreal PA, Swanton C (2012) Intratumor heterogeneity and branched evolution revealed by multi region sequencing. *N Engl J Med* 366:883–892
- Pollack A (2012) Sanofi halves price of cancer drug Zaltrap after Sloan-Kettering rejection. *The New York Times*. Nov. 8
- Ikeda M, Ioka T, Fukutomi A, Morizane C, Kasuga A, Takahashi H, Todoka A, Okusaka T, Creasy CL, Gorman S, Felitsky DJ, Kobayashi M, Zhang F, Furuse J (2018) Efficacy and safety of trametinib in Japanese patients with advanced biliary tract cancers refractory to gemcitabine. *Cancer Sci* 109(1):215–224. <https://doi.org/10.1111/cas.13438>
- U.S. FDA. Silver Spring (MD): U.S. FDA. Proposal to withdraw approval for the breast cancer indication for bevacizumab (avastin). FDA Public Hearing. June 29, 2011. <http://www.fda.gov/downloads/NewsEvents/MeetingsConferencesWorkshops/UCM261697.pdf>
- Lenz HJ, Stintzing S (2014) So much effort, So little progress? *J Nat Cancer Inst* 106(10):dju282. <https://doi.org/10.1093/jnci/dju282>
- Health Policy, Patient and Practice Issues. Experts discuss the current state of cancer clinical trials. <http://www.hemonctoday.com/article.aspx?rid=64838>. Accessed 20 Sept 2011
- Le Tourneau C, Delord JP, Gonçalves A, Gavoille C, Dubot C, Isambert N, Campone M, Trédan O, Massiani MA, Mauborgne C, Armanet S, Servant N, Bièche I et al (2015) [SHIVA investigators]: molecularly targeted therapy based on tumour molecular profiling versus conventional therapy for advanced cancer (SHIVA): a multicentre, open-label, proof-of-concept, randomised, controlled phase 2 trial. *Lancet Oncol* 16(13):1324–1334. [https://doi.org/10.1016/S1470-2045\(15\)00188-6](https://doi.org/10.1016/S1470-2045(15)00188-6) (Epub 2015 Sep 3)
- Motzer RJ, Hutson TE, Tomczak P, Michaelson MD, Bukowski RM, Rixe O, Oudard S, Negrier S, Szczylik C, Kim ST, Chen I, Bycott PW, Baum CM, Figlin RA (2007) Sunitinib versus interferon alfa in metastatic renal-cell carcinoma. *N Engl J Med* 356:115–124
- Khatami M (2012) Unresolved inflammation and cancer: loss of natural immune surveillance as the correct “target” for therapy! Seeing the “Elephant” in the light of logic. *Cell Biochem Biophys* 62:501–509
- Zack TI, Schumacher SE, Carter SL, Cherniack AD, Saksena G, Tabak B, Lawrence MS, Zhang CZ, Wala J, Mermel CH, Sougnez C, Gabriel SB, Hernandez B, Shen H, Laird PW, Getz G, Meyerson M, Beroukhir R (2013) Pan-cancer pattern of somatic copy number alteration. *Nat Genet* 45:1134–1140
- Weinberg RA (2014) Coming full circle—from endless complexity to simplicity and back again. *Cell* 157:267–271
- Sinha G (2008) Expensive cancer drugs with modest benefit ignite debate over solutions. *J Natl Cancer Inst* 100:1347–1349



22. Khatami M (2017) Inflammation, aging and cancer: biological injustices to molecular village that guard health. Springer, Cham, Switzerland, p 1–389. <http://www.springer.com/gp/book/9783319664736>
23. O'Shaughnessy J, Osborne C, Pippen JE, Yoffe M, Patt D, Rocha C, Koo IC, Sherman BM, Bradley C (2011) Iniparib plus chemotherapy in metastatic triple-negative breast cancer. *N Engl J Med* 364:205–214
24. Hillner BE, Smith TJ (2009) Efficacy does not necessarily translate to cost effectiveness: a case study in the challenges associated with 21st-century cancer drug pricing. *J Clin Oncol* 27:2111–2113
25. Wood LD, Parsons DW, Jones S, Lin J, Sjöblom T, Leary RJ, Shen D, Boca SM, Barber T, Ptak J, Silliman N, Szabo S, Dezso Z, Ustyanksky V, Nikolskaya T, Nikolsky Y et al (2007) The genomic landscapes of human breast and colorectal cancers. *Science* 318:1108–1113
26. Shah SP, Morin RD, Khattra J, Prentice L, Pugh T, Burleigh A, Delaney A, Gelmon K, Guliany R, Senz J, Steidl C, Holt RA, Jones S, Sun M, Leung G, Moore R, Severson T, Taylor GA, Teschendorff AE, Tse K, Turashvili G, Varhol R, Warren RL, Watson P, Zhao Y, Caldas C, Huntsman D, Hirst M, Marra MA, Aparicio S (2009) Mutational evolution in a lobular breast tumour profiled at single nucleotide resolution. *Nature* 461:809–813
27. Weinberg RA (2007) *The Biology of Cancer*. Garland Science, Taylor and Francis Group, New York, pp 479–483
28. Jacobs JJ, Snackey C, Geldof AA, Characiejus D, Van Moorselaar RJ, Den Otter W (2014) Inefficiency of therapeutic cancer vaccines and proposed improvements. *Casus of prostate cancer. Anticancer Res* 34:2689–2700
29. Burstein HJ (2011) Bevacizumab for advanced breast cancer: all tied up with a RIBBON? *J Clin Oncol* 29:1232–1235
30. Mayer RJ (2009) Targeted therapy for advanced colorectal cancer—more is not always better. *N Engl J Med* 360:623–625
31. Tol J, Koopman M, Cats A, Rodenburg CJ, Creemers GJ, Schrama JG, Erdkamp FL, Vos AH, van Groenigen CJ, Sinnige HA, Richel DJ, Voest EE, Dijkstra JR, Vink-Börger ME, Antonini NF, Mol L, van Krieken JH, Dalesio O, Punt CJ (2009) Chemotherapy, bevacizumab, and cetuximab in metastatic colorectal cancer. *N Engl J Med* 360:563–572
32. Hensley ML (2011) Editorial. Big costs for little gain in ovarian cancer. *J Clin Oncol* 29:1230–1232
33. Nakamura H, Fang J, Maeda H (2015) Development for next generation drugs based on the EPR effect: challenges and pitfalls. *Expert Opin Drug Deliv* 12:53–64
34. Nakamura H, Etrych T, Chytil P, Ohkubo M, Fang J, Ulbrich K, Maeda H (2014) Two step mechanisms of tumor selective delivery of *N*-(2-hydroxypropyl)methacrylamide copolymer conjugated with pirarubicin via an acid-cleavable linkage. *J Control Release* 174:81–87
35. Vogelstein B, Papadopoulos N, Velculescu VE, Zhou S, Diaz LA Jr, Kinzler KW (2013) Cancer genome landscapes. *Science* 339:1546–1558
36. Zavala VA, Kalergis AM (2015) New clinical advances in immunotherapy for the treatment of solid tumours. *Immunology* 145(2):182–201. <https://doi.org/10.1111/imm.12459> (**Epub 2015 Mar 30**)
37. Khatami M (2014) Chronic inflammation: synergistic interactions of recruiting macrophages (TAMs) and eosinophils (Eos) with host mast cells (Mcs) and tumorigenesis in CALTs. M-CSF, suitable biomarker for cancer diagnosis! *Cancers* 6:297–322
38. Khatami M. Inflammation, aging and cancer: Friend or foe? In: Khatami M, editor. *Inflammation, chronic diseases and cancer-cell and molecular biology, immunology and clinical bases*. Rejeka: In Tech Publishing [ISBN 978-953-51-0102]; 2012. pp. 3–30
39. Khatami M (2016) Safety concerns and hidden agenda behind HPV vaccines: another generation of drug-dependent society? *Clin Transl Med* 5(1):46 (**Epub 2016 Dec 5**)
40. Neustadt RE, Fineberg HV (eds) (1978) *The swine flu affair: decision-making on a slippery disease*. National Academies Press, Washington (DC)
41. Williams SE, Pahud BA, Vellozzi C, Donofrio PD, Dekker CL, Halsey N et al (2011) Causality assessment of serious neurologic adverse events following 2009 H1N1 vaccination. *Vaccine*. 29:8302–8308. <https://doi.org/10.1016/j.vaccine.2011.08.093>
42. Toussirot E, Bereau M (2015) Vaccination and induction of autoimmune diseases. *Inflamm Allergy Drug Targets* 14:94–98. <https://doi.org/10.2174/1871528114666160105113046>
43. Bonetto C, Trotta F, Felicetti P, Alarcón GS, Santuccio C, Bachtiar NS et al (2016) Vasculitis as an adverse event following immunization—systematic literature review. *Vaccine*. 34(51):6641–6651. <https://doi.org/10.1016/j.vaccine.2015.09.026> (**Epub 2015 Sep 21**)
44. Khatami M (2016) In: *Cancer research and therapy: scam of century—promote immunity (Yin–Yang)*. ISBN-10:153043100X; ISBN-13: 978-1530431007; Amazon-Createspace. p 1–166. <https://www.createspace.com/6123573>
45. Khatami M. (2017) Immune surveillance in health and diseases of aging: definitions of acute and chronic inflammation [Yin and Yang]. In: *Inflammation, aging and cancer*. Springer, Cham. [https://doi.org/10.1007/978-3-319-66475-0\\_2](https://doi.org/10.1007/978-3-319-66475-0_2)
46. Kuwahara H, Kariu T, Fan J, Maeda H (2009) Generation of drug-resistant mutants of *Helicobacter pylori* in the presence of peroxy nitrite, a derivative of nitric oxide at pathophysiological concentration. *Microbiol Immunol* 53:1–7
47. Yoshitake J, Akaike T, Akuta T, Tamura F, Ogura T, Esumi H, Maeda H (2004) Nitric oxide as an endogenous mutagen for Sendai virus without antiviral activity. *J Virol* 78:8709–8719
48. Maeda H, Akaike T (1998) Nitric oxide and oxygen radicals in infection, inflammation, and cancer. *Biochemya (Moscow)* 63:1007–1017 (**Russian**), (**English: No. 7 854–865**)
49. Maeda H, Sawa T, Yubisui T, Akaike T (1999) Free radical generation from heterocyclic amines by cytochrome b5 reductase in the presence of NADH. *Cancer Lett* 143:117–121
50. Oda T, Akaike T, Hamamoto T, Suzuki F, Hirano T, Maeda H (1989) Oxygen radicals in influenza-induced pathogenesis and treatment with pyran polymer-conjugated SOD. *Science* 244:974–976
51. Akaike T, Noguchi Y, Ijiri S, Setoguchi K, Suga M, Zheng YM, Dietzschold B, Maeda H (1996) Pathogenesis of influenza virus-induced pneumonia: involvement of both nitric oxide and oxygen radicals. *Proc Natl Acad Sci USA* 93:2448–2453
52. Cao X, Tsukamoto T, Seki T, Tanaka H, Morimura S, Cao L, Mizoshita T, Ban H, Toyoda T, Maeda H, Tatematsu M (2008) 4-Vinyl-2,6-dimethoxyphenol (canolol) suppresses oxidative stress and gastric carcinogenesis in *Helicobacter pylori*-infected carcinogen-treated Mongolian gerbils. *Int J Cancer* 122:1445–1454
53. Maeda H (2015) Toward a full understanding of the EPR effect in primary and metastatic tumors as well as issues related to its heterogeneity. *Adv Drug Deliv Rev* 30(91):3–6. <https://doi.org/10.1016/j.addr.2015.01.002> (**Epub 2015 Jan 9**)
54. Fang J, Seki T, Tetsuya T, Qin H, Liao L, Nakamura H, Maeda H (2013) Protection from inflammatory bowel disease and colitis associated carcinogenesis with 4-vinyl-2,6-dimethoxyphenol (canolol) via suppression of oxidative stress. *Carcinogenesis* 34:2833–2841
55. Kanazawa A, Sawa T, Akaike T, Maeda H (2000) Formation of a basic sites in DNA by *t*-butyl peroxy radicals: implication for potent genotoxicity of lipid peroxy radicals. *Cancer Lett* 156:51–55
56. Doi K, Akaike T, Horie H, Noguchi Y, Fujii S, Beppu T, Ogawa M, Maeda H (1996) Excessive production of nitric oxide in rat solid tumor and its implication in rapid tumor growth. *Cancer* 77:1598–1604
57. Sawa T, Akaike T, Ichimori K, Akuta T, Kaneko K, Nakayama H, Stuehr D, Maeda H (2003) Superoxide generation mediated by 8-nitroguanosine, a highly redox-active nucleic acid derivative. *Biochem Biophys Res Comm* 311:300–306
58. Kuwahara H, Kanazawa A, Wakamatsu D, Morimura S, Kida K, Akaike T, Maeda H (2004) Antioxidative and antimutagenic activities of 4-vinyl-2,6-dimethoxyphenol (canolol) isolated from canola oil. *J Agric Fd Chem* 52:4380–4387
59. Akaike T, Fujii S, Kato A, Yoshitake J, Miyamoto Y, Sawa T, Okamoto S, Suga M, Asakawa M, Nagai Y, Maeda H (2000) Viral mutation accelerated by nitric oxide production during infection in vivo. *FASEB J* 14:1447–1454
60. Akaike T, Maeda H (2000) Nitric oxide and virus infection. *Immunology* 101:300–308
61. Akaike T, Maeda H (2000) Pathophysiological effects of high-output production of nitric oxide. In: Ignarro LJ (ed) *Nitric oxide*. Academic Press, San Diego, pp 733–745
62. Khatami M (2011) Unresolved inflammation: “Immune tsunami” or erosion of integrity in immune-privileged and immune-responsive tissues and acute and chronic inflammatory diseases or cancer. *Exp Opin Biol Ther* 11:1419–1432

63. Khatami M (2008) "Yin and Yang" in inflammation: duality in innate immune cell function and tumorigenesis. *Exp Opin Biol Ther* 8:1461–1472
64. Khatami M (2009) Inflammation, aging and cancer: tumoricidal vs tumorigenesis of immunity: a common denominator mapping chronic diseases. *Cell Biochem Biophys* 55:55–79
65. Khatami M (2016) Is cancer a severe delayed hypersensitivity reaction and histamine a blueprint? *Clin Transl Med* 5(1):35. <https://doi.org/10.1186/s40169-016-0108-3> (Epub 2016 Aug 23)
66. Khatami M (2017) Cancer statistics and concerns for safety of drugs or vaccines: increased population of drug-dependent sick society! In: *Inflammation, aging and cancer*. Springer, Cham. [https://doi.org/10.1007/978-3-319-66475-0\\_5](https://doi.org/10.1007/978-3-319-66475-0_5)
67. Sledge GW (2015) Anti-vascular endothelial growth factor therapy in breast cancer: game over? *J Clin Oncol* 33:133–135
68. Miles DW, Chan A, Dirix LY, Cortés J, Pivot M, Tomczak P, Delozier T, Sohn JH, Provencher L, Puglisi F, Harbeck N, Steger GG, Schneeweiss A, Wardley AM, Chlistalla A, Romieu G (2010) Phase III study of bevacizumab plus docetaxel compared with placebo plus docetaxel for the first-line treatment of human epidermal growth factor receptor 2-negative metastatic breast cancer. *J Clin Oncol* 28:3239–3247
69. Lee YS, Kang YS, Lee JS, Nicolova S, Kim JA (2004) Involvement of NADPH oxidase-mediated generation of reactive oxygen species in the apoptotic cell death by capsaicin in Hep G2 human hepatoma cells. *Free Radic Res* 38:405–412
70. Robert C, Karaszewska B, Schachter J, Rutkowski P, Mackiewicz A, Stroiakovski D, Lichinitser M, Dummer R, Grange F, Mortier L, Chiarion-Sileni V, Drucis K, Krajsova I, Hauschild A, Lorigan P, Wolter P, Long GV, Flaherty K, Nathan P, Ribas A, Martin AM, Sun P, Crist W, Legos J, Rubin SD, Little SM, Schadendorf D (2015) Improved overall survival in melanoma with combined dabrafenib and trametinib. *N Engl J Med* 372:30–39
71. Keibel A, Singh V, Sharma MC (2009) Inflammation, microenvironment, and the immune system in cancer progression. *Curr Pharm Des* 15:1949–1955
72. Moore MM, Chua W, Charles KA, Clarke SJ (2010) Inflammation and cancer: causes and consequences. *Clin Pharmacol Ther* 87:504–508
73. Weinberg RA (2007) *The Biology of Cancer*. Garland Science, Taylor and Francis Group, New York, p 454
74. Kronenberg M (2005) Toward an understanding of NKT cell biology: progress and paradoxes. *Annu Rev Immunol* 23:877–900
75. Pardoll DM (2012) The blockade of immune checkpoints in cancer immunotherapy. *Nat Rev Cancer* 12:252–264
76. Jacobs JGL, Snackey C, Geldof AA, Characiejus D, Moorselaar RJAV, Otter WD (2014) Inefficacy of therapeutic cancer vaccines and proposed improvements. *Casus of prostate cancer*. *Anticancer Res* 34:2689–2700
77. Brieau B, Dahan L, De Rycke Y, Vasseur P, Tougeron D, Lecomte T, Coriat R, Bachet JB, Claudéz P, Zaanán A, Soibinet P, Desrame J, Thiroit-Bidault A, Mary F, Marthey L, Taieb J, Cacheux W, Lièvre A (2015) Second-line chemotherapy for advanced biliary tract cancer after failure of the gemcitabine-platinum combination: a large multicenter study by the Association des Gastro-Entérologues Oncologues. *Cancer* 121:3290–3297
78. Day A (2009) 'An American tragedy', the cutter incident and its implications for the Salk polio vaccine in New Zealand 1955–1960. *Health Hist* 11:42–61
79. Raghavan D, Stein JP, Cote R, Jones JS (2010) Cancer medicine. In: *Wik Hong RC Bast Jr, Holland E, Frei et al. (ed) Bladder Cancer*, vol 8. Chapt. 93. 1219–1227 [1222 (R)–1223 (L)] PMRH-USA/BC Dekker/AACR Shelton, Co. NY
80. Ogura M, Ishida T, Hatake K, Taniwaki M, Ando K, Tobinai K, Fujimoto K, Yamamoto K, Miyamoto T, Uike N, Tanimoto M, Tsukasaki K, Ishizawa K, Suzumiya J, Inagaki H, Tamura K, Akinaga S, Tomonaga M, Ueda R (2014) Multicenter phase II study of mogamulizumab (KW-0761), a defucosylated anti-CC chemokine receptor 4 antibody, in patients with relapsed peripheral T-cell lymphoma and cutaneous T-cell lymphoma. *J Clin Oncol* 32:1157–1163
81. Topalian SL, Hodi FS, Brahmer JR, Gettinger SN, Smith DC, McDermott DF, Powderly JD, Carvajal RD, Sosman JA, Atkins MB, Leming PD, Spigel DR, Antonia SJ, Horn L, Drake CG, Pardoll DM, Chen L, Sharfman WH, Anders RA, Taube JM, McMiller TL, Xu H, Korman AJ, Jure-Kunkel M, Agrawal S, McDonald D, Kollia GD, Gupta A, Wigginton JM, Sznol M (2012) Safety, activity, and immune correlates of anti-PD-1 antibody in cancer. *N Engl J Med* 366:2443–2454
82. Long GV, Stroyakovskiy D, Gogas H, Levchenko E, de Braud F, Larkin J, Garbe C, Jouary T, Hauschild A, Grob JJ, Sileni VC, Lebbe C, Mandalà M, Millward M, Arance A, Bondarenko I, Haanen JBAG, Hansson J, Utikal J, Ferraresi V, Kovalenko N, Mohr P, Probstachai V, Schadendorf D, Nathan P, Robert C, Ribas A, DeMarini DJ, Irani JG, Casey M, Ouellet D, Martin A-M, Le N, Patel K, Flaherty K (2014) Combined BRAF and MEK inhibition versus BRAF inhibition alone in melanoma. *N Engl J Med* 371:1877–1888
83. Weber J (2010) Immune checkpoint proteins: a new therapeutic paradigm for cancer—preclinical background: CTLA-4 and PD-1 blockade. *Semin Oncol* 37:430–439
84. Nichols CR, Timmerman R, Foster RS, Einhorn LH (2000) Ch.110, Neoplasms of the testis. In: *Bast RC, Kwife DW, Pollock RE, Weichselbaum RR, Holland J, Frei E (eds) Holland/Frei cancer medicine*. American Cancer Society/BC Dekker Inc., Hamilton, pp 1596–1621
85. Rosenberg SA (2001) Progress in human tumour immunology and immunotherapy. *Nature* 411:380–384
86. Eberlein TJ, Rosenstein M, Rosenberg SA (1982) Regression of a disseminated syngeneic solid tumor by systemic transfer of lymphoid cells expanded in interleukin 2. *J Exp Med* 156:385–397
87. Rosenberg SA, Yang JC, Restifo NP (2004) Cancer immunotherapy: moving beyond current vaccines. *Nature Med* 10:909–915
88. Khatami M, Donnelly JJ, Haldar JP, Rockey JH (1989) Massive follicular lymphoid hyperplasia in experimental chronic recurrent allergic conjunctivitis. *Arch Ophthalmol* 107:433–438
89. Khatami M (2005) Developmental phases of inflammation-induced massive lymphoid hyperplasia and extensive changes in epithelium in an experimental model of allergy. Implications for a direct link between inflammation and carcinogenesis. *Am J Ther* 12:117–128
90. Khatami M, Donnelly JJ, Rockey JH (1985) Induction and down-regulation of conjunctival type-1 hypersensitivity reactions in guinea pigs sensitized topically with fluoresceinyl ovalbumin. *Ophthalmic Res* 17:139–147
91. Khatami M (2005) Cyclooxygenase inhibitor ketorolac or mast cell stabilizers: immunological challenges in cancer therapy. *Clin Cancer Res* 11:1349–1351
92. Hellebood L, Khatami M, Wei Z-G, Rockey JH (1991) Histamine and prostacyclin: primary and secondary release in allergic conjunctivitis. *Invest Ophthalmol Vis Sci* 32:2281–2289
93. Lammers T (2012) Drug delivery research in Europe. *J Control Release* 161:151
94. Maeda H (2012) Macromolecular therapeutics in cancer treatment: the EPR effect and beyond. *J Control Release* 164:138–144
95. Nakamura H, Koziolová E, Chytilic P, Tsukigawa K, Fang J, Haratake M, Ulbrich K, Etrych T, Maeda H (2016) Pronounced cellular uptake of pirarubicin versus that of other anthracyclines: comparison of HPMA copolymer conjugates of pirarubicin and doxorubicin. *Mol Pharm* 13:4106–4115
96. Matsumura Y, Maeda H (1986) A new concept for macromolecular therapeutics in cancer chemotherapy: mechanism of tumorotropic accumulation of proteins and the antitumor agent SMANCS. *Cancer Res* 46:6387–6392
97. Fahmy N, Lazo-Langer A, Lansavichene AL, Paulter SE (2013) Effect of anticoagulants and antiplatelet agents on the efficacy of intravesical BCG treatment of bladder cancer: a systematic review. *Can Urol Assoc J* 7:E740–E749
98. Witjes JA (2006) Management of BCG failures in superficial bladder cancer: a review. *Eur Urol* 49:790–797
99. Maeda H (2013) The link between infection and cancer: tumor vasculature, free radicals, and drug delivery to tumors via the EPR effect. *Cancer Sci* 104:779–789
100. Maeda H, Sato K, Akaike T (1995) Superoxide radical generation from heterocyclic amines. In: *Proceedings of the 23rd International Symposium of the Princess Takamatsu Cancer Research Fund*. Heterocyclic amines in cooked foods: possible human carcinogens (Adamson RH, Gustafsson JA, Ito N, Nagao M, Sugimura T, Wakabayashi K, Yamazoe Y (eds)) Princeton Scientific Publishing Co., New Jersey, p. 103–112
101. Sato K, Akaike T, Kojima Y, Ando M, Nagao M, Maeda H (1992) Evidence of direct generation of oxygen free radicals from heterocyclic amines

- by NADPH/cytochrome P-450 reductase in vitro. *Jpn J Cancer Res* 83:1204–1209
102. Maeda H, Tsukigawa K, Fang J (2016) A retrospective 30 years after discovery of the EPR effect of solid tumors: treatment, imaging, and next-generation PDT—problems, solutions, prospects. *Microcirculation* 23:173–182
  103. Maeda H (2011) Enhanced permeability and retention effect in relation to tumor targeting. In: Kratz F, Senter P, Steinhagen H (eds). *Drug delivery in oncology. From basic research to cancer therapy*, Vol. 1. Wiley, Weinheim, pp 65–84
  104. Maeda H, Nakamura H, Fang J (2013) The EPR effect for macromolecular drug delivery to solid tumors: improved tumor uptake, less systemic toxicity, and improved tumor imaging—review of the vascular permeability of tumors and the EPR effect. *Adv Drug Deliv Rev* 65:71–79
  105. Greish K, Nagamitsu A, Fang J, Maeda H (2005) Copoly (styrene-maleic acid)-pirarubicin micelles: high tumor targeting efficacy with low toxicity. *Bioconj Chem* 16:230–236
  106. Grossman JH, McNeil SE (2012) Nanotechnology in cancer medicine. *Phys Today* 65:38–42
  107. Hollis CP, Weiss HL, Leggas M, Evers BM, Gemeinhart RA, Li T (2013) Biodistribution and bioimaging studies of hybrid paclitaxel nanocrystals: lessons learned of the EPR effect and image-guided drug delivery. *J Control Release* 172:12–21
  108. Maeda H (2012) Vascular permeability in cancer and infection as related to macromolecular drug delivery, with emphasis on the EPR effect for tumor-selective drug targeting. *Proc Jpn Acad Ser B* 88:53–71
  109. Maeda H (2001) SMANCS and polymer-conjugated macromolecular drugs: advantages in cancer chemotherapy. *Adv Drug Deliv Rev* 46:169–185
  110. Duncan R (2002) Polymer-drug conjugates: Targeting cancer. In: Muzykantov VR, Torchilin VP (eds) *Biomedical aspects of drug targeting*. Kluwer Academic Publishers, Massachusetts, pp 193–209
  111. Park AK (2013) Questions on the role of the EPR effect in tumor targeting. *J Control Release* 172:391
  112. Prabhakar U, Maeda H, Jain RK, Sevcik-Muraca E, Zamboni W, Farokhzad OC, Barry ST et al (2013) Challenges and key considerations of the enhanced permeability and retention effect (EPR) for nanomedicine drug delivery in oncology. *Cancer Res* 73:2412–2417
  113. Nakanishi T, Fukushima S, Okamoto K, Suzuki M, Matsumura Y, Yokoyama M, Okano T, Sakurai Y, Kataoka K (2001) Development of the polymer micelle carrier system for doxorubicin. *J Control Release* 74:295–302
  114. Kunitomo S, Miura K, Takahashi Y, Takeuchi T, Umezawa H (1983) Rapid uptake by cultured tumor cells and intracellular behavior of 4'-O-tetrahydropyranyladriamycin. *J Antibiot (Tokyo)* 36:312–317
  115. Johnson RK (1990) Screening methods in antineoplastic drug discovery. Editorial. *J Nat Cancer Instit* 82:1082–1108
  116. Zhou Q, Facciponte J, Jin M, Shen Q, Lin Q (2014) Humanized NOD-SCID IL2rg<sup>-/-</sup> mice as a preclinical model for cancer research and its potential use for individualized cancer therapies. *Cancer Lett* 344:13–19
  117. Hoffman R (1999) Orthotopic metastatic mouse models for anticancer drug discovery and evaluation: a bridge to the clinic. *Invest New Drugs* 17:343–359
  118. Clarke JL (2014) Bevacizumab and other targeted agents in the upfront treatment of glioblastoma. *Radiat Oncol* 24:273–278
  119. Han SJ, Rolston JD, Molinaro AM, Clarke JL, Prados MD, Chang SM, Berger MS, DeSilva A, Butowski NA (2014) Phase II trials of 7 days on/7 days off temozolamide for recurrent high grade glioma. *Neuro Oncol* 16:1255–1262
  120. Swisher SG, Rice DC, Ajani JA, Komaki RK, Ferguson MK (2010) *Cancer Medicine*. In: Hong WK, Bast RC, et al (ed) *Neoplasms of the Esophagus* AACR. Shelton, Chapt. 83, BC Dekker, Shelton, pp 1074–1085
  121. Gomer CJ, Ferrario A (1990) Tissue distribution and photosensitizing properties of mono-l-aspartyl chlorin e6 in a mouse tumor model. *Cancer Res* 50:3985–3990
  122. Fang J, Liao L, Yin H, Nakamura H, Subr V, Ulbrich K, Maeda H (2015) Photodynamic therapy and imaging based on tumor-targeted nano-probe, polymer-conjugated zinc protoporphyrin. *Futur Sci OA* <http://www.future-science.com/doi/pdf/10.4155/fso.15.2> (Published online, 2015)
  123. Nakamura H, Liao L, Hitaka Y, Tsukigawa K, Subr V, Fang J, Ulbrich K, Maeda H (2012) Micelles of zinc protoporphyrin conjugated to N-(2-hydroxypropyl)methacrylamide (HPMA) copolymer for imaging and light-induced antitumor effects in vivo. *J Control Release* 165:191–198
  124. Iyer AK, Greish K, Seki T, Okazaki S, Fang J, Takeshita K, Maeda H (2007) Polymeric micelles of zinc protoporphyrin for tumor targeted delivery based on EPR effect and singlet oxygen generation. *J Drug Target* 15:496–506
  125. Beil L (2012) How much would you pay for three more months of life? *Newsweek*. 160(10):40–44
  126. Brill S (2013) Bitter pill: why medical bills are killing us. *Time* (USA edition), Florida, pp 16–55 (**March 4**)
  127. Rabinovitch D (2007) Take off your party dress: when life's too busy for breast cancer. Simon & Schuster, UK, pp 1–258
  128. Yasuda H (2008) Solid tumor physiology and hypoxia-induced chemo/radio-resistance: novel strategy for cancer therapy: nitric oxide donor as a therapeutic enhancer. *Nitric Oxide* 19:205–216
  129. Janssens MY, Van den Berge DL, Verovski VN, Monsaert C, Storme GA (1998) Activation of inducible nitric oxide synthase results in nitric oxide-mediated radiosensitization of hypoxic EMT-6 tumor cells. *Cancer Res* 58:5646–5648
  130. Yasuda H, Yamaya M, Nakayama K, Sasaki T, Ebihara S, Kanda A, Asada M, Inoue D, Suzuki T, Okazaki T, Takahashi H, Yoshida M, Kaneta T, Ishizawa K, Yamada S, Tomita N, Yamasaki M, Kikuchi A, Kubo H, Sasaki H (2006) Randomized phase II trial comparing nitroglycerin plus vinorelbine and cisplatin with vinorelbine and cisplatin alone in previously untreated stage IIIb/IV non-small-cell lung cancer. *J Clin Oncol* 24:688–694
  131. Data from the Office of statistics (2014) Survey of Medical Expense. Minister's Secretariat, Ministry of Health, Welfare, and Labour of Japan and from the Data of Website of the Ministry of Finance, Japan
  132. Prasad V, Lenzer J, Newman DH (2016) Why cancer screening has never been shown to "save lives"—and what we can do about it. *BMJ*. <https://doi.org/10.1136/bmj.h6080>
  133. Maeda H, Bharate GY, Daruwalla J (2009) Polymeric drugs for efficient tumor targeted drug delivery based on EPR-effect. *Eur J Pharm Biopharm* 71:409–419
  134. Folkman J (1971) Tumor angiogenesis: therapeutic implications. *N Engl J Med* 285:1182–1186
  135. Jasinski-Bergner S, Mandelboim O, Seliger B (2014) The role of microRNAs in the control of innate immune response in cancer. *J Nat Cancer Inst* 106(10):dju257. <https://doi.org/10.1093/jnci/dju257>
  136. Nichols JW, Abe YH (2014) EPR: evidence and fallacy. *J Control Release* 190:451–464
  137. Ohtsuka N, Konno T, Miyauchi Y, Maeda H (1987) Anticancer effects of arterial administration of the anticancer agent SMANCS with Lipiodol on metastatic lymph nodes. *Cancer* 59:1560–1565
  138. Yamasaki K, Konno T, Miyauchi Y, Maeda H (1987) Reduction of hepatic metastases in rabbits by administration of an oily anticancer agent into the portal vein. *Cancer Res* 47:852–855
  139. Kratz F, Beyer U, Roth T, Tarasova N, Collery P, Lechenault F, Cazabat A, Schumacher P, Unger C, Falken U (1998) Transferrin conjugates of doxorubicin: synthesis, characterization, cellular uptake, and in vitro efficacy. *J Pharm Sci* 87:338–346
  140. Kratz F, Beyer U, Schumacher P, Krüger M, Zahn H, Roth T, Fiebig HH, Unger C (1997) Synthesis of new maleimide derivatives of daunorubicin and biological activity of acid labile transferrin conjugates. *Med Chem Lett* 7:617–622
  141. Maeda H, Matsumura Y (1989) Tumorotropic and lymphotropic principles of macromolecular drugs. *Crit Rev Ther Drug Carrier Syst* 6:193–210
  142. Tsukigawa K, Liao L, Nakamura H, Fang J, Greish K, Otogiri M, Maeda H (2015) Synthesis and therapeutic effect of styrene-maleic acid copolymer conjugated pirarubicin. *Cancer Sci* 106:270–278
  143. Seki T, Fang J, Maeda H (2009) Enhanced delivery of macromolecular antitumor drugs to tumors by nitroglycerin application. *Cancer Sci* 100:2426–2430
  144. Maeda H (2012) Macromolecular therapeutics in cancer treatment: the EPR effect and beyond. *J Control Release* 164:138–144
  145. Daruwalla J, Nikfarjam M, Greish K, Malcontenti-Wilson C, Muralidharan V, Christophi C, Maeda H (2010) In vitro and in vivo evaluation of tumor targeting SMA-pirarubicin micelles: survival improvement and inhibition of liver metastases. *Cancer Sci* 101:1866–1874

146. Maeda H, Takeshita J, Yamashita A (1980) Lymphotropic accumulation of an antitumor antibiotic protein, neocarzinostatin. *Eur J Cancer* 16:723–731
147. Nagamitsu A, Greish K, Maeda H (2009) Elevating blood pressure as a strategy to increase tumor targeted delivery of macromolecular drug SMANCS: cases of advanced solid tumors, Japan. *J Clinical Oncol* 39:756–766
148. Konerding MA, Miodonski AJ, Lametschwandtner A (1995) Microvascular corrosion casting in the study of tumor vascularity: a review. *Scanning Microsc* 9:1233–1244
149. Etrych T, Jelinková M, Říhová B, Ulbrich K (2001) New HPMA copolymers containing doxorubicin bound via pH-sensitive linkage: synthesis and preliminary in vitro and in vivo biological properties. *J Control Release* 73:89–102
150. Duncan R, Sat-Klopsch YN, Burger AM, Bibby MC, Fiebig HH, Sausville EA (2013) Validation of tumour models for use in anticancer nanomedicine evaluation: the EPR effect and cathepsin B-mediated drug release rate. *Cancer Chemother Pharmacol* 72:417–427
151. Jessup JM (1994) Cathepsin B and other proteases in human colorectal carcinoma. *Am J Pathol* 145:253–262
152. Coley WB (1910) The treatment of inoperable sarcoma by bacterial toxins (the mixed toxins of the streptococcus erysipelas and the bacillus prodigious). *Proc R Soc Med* 3:1–48
153. Decker WK (2009) Bioimmunoadjuvants for the treatment of neoplastic and infectious disease: coley's legacy revisited. *Cytokine Growth Factor Rev* 20:271–281
154. Khatami M (2017) Cancer biology: severe cumulative hypersensitivity reactions. In: *Inflammation, aging and cancer*. Springer Cham. [https://doi.org/10.1007/978-3-319-66475-0\\_6](https://doi.org/10.1007/978-3-319-66475-0_6)

**Submit your manuscript to a SpringerOpen<sup>®</sup> journal and benefit from:**

- ▶ Convenient online submission
- ▶ Rigorous peer review
- ▶ Open access: articles freely available online
- ▶ High visibility within the field
- ▶ Retaining the copyright to your article

---

Submit your next manuscript at ▶ [springeropen.com](https://www.springeropen.com)

---