

# Assessment of duration until initial treatment and its determining factors among newly diagnosed oral cancer patients

## A population-based retrospective cohort study

Shang-Jyh Chiou, DrPH<sup>a</sup>, Wender Lin, PhD<sup>b</sup>, Chi-Jeng Hsieh, PhD<sup>c,\*</sup>

### Abstract

Few studies have focused on the early treatment stages of cancer, and the impact of treatment delay on oncologic outcomes is poorly defined. We used oral cancer as an example to investigate the distribution of durations until initial treatment.

This study was conducted using the National Health Insurance Research Database, which is linked to Taiwan's Cancer Registry and Death Registry databases. We defined "cutoff points for first-time treatment" according to a weekly schedule and sorted the patients into 2 groups based on whether their duration until initial treatment was longer or shorter than each cutoff. We then calculated the Kaplan–Meier estimator to determine the difference in survival rates between the 2 groups and performed logistic regression to identify determining factors.

The average time between diagnosis and initial treatment was approximately 22.45 days. The average survival duration was 1363 days (standard deviation: 473.06 days). Oral cancer patients had no statistically significant differences in survival until a cutoff point of 3 weeks was used (with survival duration 71 days longer if initial treatment was received within 3 weeks). Patients with higher incomes or higher Charlson comorbidity index scores and patients treated at a hospital in a region with medium urbanization had lower likelihoods of treatment delay, whereas older patients were at higher risk of treatment delay.

The attitudes, beliefs, and social contexts of oral cancer patients influence the treatment-seeking behaviors of these patients. Therefore, the government should advocate the merits of the referral system for cancer treatment or improve quality assurance for cancer diagnoses across different types of hospitals. Health authorities should also educate patients or use a case manager to encourage prompt treatment within 3 weeks and should provide screening and prevention services, particularly for high-risk groups, to reduce mortality risk.

**Abbreviations:** CCI = Charlson comorbidity index, FDD = first diagnosis–death, FDFT = first diagnosis–first treatment, NHI = National Health Insurance, OR = odds ratio.

**Keywords:** delay in treatment, oral cancer, population-based study, survival risk

## 1. Introduction

Prompt diagnosis and treatment are advocated to controlling the growth of cancer. Several studies have found poor prognoses

when medication or treatment is delayed<sup>[1–3]</sup>; however, no systematic reviews have reached a conclusive agreement regarding this relationship in different types of cancer.<sup>[4,5]</sup> From public health perspective, understanding patient behavior is critical for urging patients or physicians to seek appropriate intervention. Effects of treatment delays and perceptions of delays in treatment vary widely among cancer types. Two common limitations of relevant studies are recall bias in survey data and perceptions of delays among patients or providers.<sup>[6–10]</sup> Describing the distribution of durations until initial treatment could be helpful to health officials who formulate strategies for encouraging patients to receive timely treatment.

The incidence and mortality of oral cancer have increased in Taiwan over the past 3 decades.<sup>[11]</sup> By contrast, in other countries, the trends in the incidence and mortality of oral cancer have been more encouraging.<sup>[12]</sup> In Taiwan, oral cancer was 1 of the fourth most common form of cancer,<sup>[13]</sup> especially for men aged 30 to 54 years; this trend is associated with betel quid chewing and lower socioeconomic status.<sup>[14]</sup> The high incidence and relatively high survival rates of oral cancer<sup>[11]</sup> in Taiwan have compelled the government to provide free screening services for designated groups. To date, early detection and treatment have been critical<sup>[15]</sup> in oral cancer control and have resulted in an improved quality of life for survivors.

In general, several delay phases may occur during the progression of an illness. The first phase is diagnostic delay,

Editor: Pricivel Carrera.

*Funding/support:* This study was supported by National Science Council (grant NSC 101-2314-B-468-001), based on data from the National Health Insurance Research Database provided by National Health Research Institute. The interpretations and conclusions contained herein do not represent those of the National Health Research Institutes in Taiwan.

The authors have no conflicts of interest to disclose.

<sup>a</sup> Department of Health Care Management, National Taipei University of Nursing and Health Sciences, Taipei, <sup>b</sup> Department of Health Care Administration, Chang Jung Christian University, Tainan City, <sup>c</sup> Department of Health Care Administration, Oriental Institute of Technology, Taipei, Taiwan.

\* Correspondence: Chi-Jeng Hsieh, Department of Health Care Administration, Oriental Institute of Technology, 58, Sihchuan Rd. Sec. 2, Pan-Chiao District, New Taipei City 220, Taipei, Taiwan (e-mail: #1004@mail.oit.edu.tw)

Copyright © 2016 the Author(s). Published by Wolters Kluwer Health, Inc. All rights reserved.

This is an open access article distributed under the Creative Commons Attribution License 4.0 (CCBY), which permits unrestricted use, distribution, and reproduction in any medium, provided the original work is properly cited.

Medicine (2016) 95:50(e5632)

Received: 19 May 2016 / Received in final form: 16 November 2016 / Accepted: 18 November 2016

<http://dx.doi.org/10.1097/MD.0000000000005632>

during which patients ignore symptoms or lack awareness of the signs of a disease and do not visit a physician to receive a diagnosis. The second phase is treatment delay, which has 2 main contributors, patients and systems (defined as providers and institutions), and does not involve scheduling treatment within appropriate periods.<sup>[16]</sup> The final phase is follow-up delay, which involves a lack of patient compliance with clinical protocols or prescribed behavioral changes. Studies have attributed delays to patient factors (demographics, comorbidities, psychological disorders, social factors, lack of awareness, lack of time, family problems, transportation problems, and/or cultural experience<sup>[17–22]</sup>), provider and system factors (access to health care, the patient–doctor relationship, waiting lists, misdiagnosis, inadequate treatment, and/or referrals<sup>[23–25]</sup>), and disease factors (site, size, and/or growth rate). Although it appears obvious that delays in diagnosis or treatment would lead to unfavorable outcomes, no unanimous definition of “delay” has been established.<sup>[26,27]</sup>

Further, several studies addressing delays in cancer have devoted more attention to awareness of symptoms than to treatment<sup>[1,28]</sup> because of the association between prompt diagnosis and successful treatment in early-stage cancer. Patients with delayed cancer diagnoses provide the theoretical model for help-seeking behavior; however, the findings of empirical studies have been ambiguous.<sup>[29,30]</sup> Few studies to date have focused on durations until initial treatment and whether these durations influence survival risk. Previous studies have indicated that patients generally assume that their symptoms are trivial and commonly lack the knowledge to identify the root cause of these symptoms,<sup>[31]</sup> leading to a wide range of durations until treatment for different cancer types. Education, socioeconomic status, access to health care, and health-seeking behavior have been posited as the determining factors of treatment delay among, for example, patients diagnosed with oral cancer.<sup>[32]</sup>

This study used population data from Taiwan’s National Health Insurance (NHI) program to further elucidate delays in cancer treatment. The single-payer NHI system, launched in 1995, has efficiently mitigated financial and access barriers and covers approximately 99% of the Taiwanese population. The NHI Research Database, which is linked to Taiwan’s Cancer Registry and Death Registry, is released to researchers for the retrospective analysis of NHI claims data. In our study, we used oral cancer as an example to investigate the distribution of durations until initial treatment and assess treatment delays. Researchers and clinicians can utilize other determining factors to examine the data and conceive of useful strategies for treating cancer.

## 2. Methods

### 2.1. Study population

The NHI claims database covers 99% of the Taiwanese population and contains substantial information on the use of medical services; it is therefore highly suited to a longitudinal cohort design. This study was conducted using the NHI claims database, which is linked to the Cancer Registry and Death Registry databases. The Cancer Registry was established in 1979. All hospitals with a capacity greater than 50 beds must report newly diagnosed malignant neoplasms for inclusion in the registry. Duplicate checks and quality controls are performed periodically to detect possible mistakes and inconsistencies. We began by selecting patients who were diagnosed with oral cancer

in 2007 (International Classification of Diseases for Oncology: C060, C069). Although the data for each patient included an initial diagnosis date, we chose the date of microscopic examination as the index date to ensure greater accuracy. Exclusion criteria included missing diagnostic data, an initial treatment date more than 365 days after the index date, and records with errors. After the exclusion criteria were applied, a total of 2703 oral cancer cases remained. The Institutional Review Board (IRB) of the China Medical University approved this study (DMR101-IRB2-252). The IRB waived the need for informed consent from the patients because the datasets used in this study consists of anonymized, deidentified nationwide data.

### 2.2. Initial treatment and duration

The cancer registry database includes the dates of first treatment, including surgery, chemotherapy, radiotherapy, and other therapies (e.g., hormone therapy), and the dates of any relapses. We used the Cancer Registry and the Death Registry to calculate durations, which were defined as follows:

FDFT = first treatment date – first diagnosis date

First diagnosis–death (FDD)

FDD = death date – first diagnosis date

### 2.3. Variables

**2.3.1. Dependent variable.** Because “delay” has a negative connotation, we defined “cutoff points for first-time treatment” using a weekly schedule and sorted the patients into 2 groups based on whether their duration until treatment was longer or shorter than the cutoff. To assess the duration of initial treatment over 60 days, we estimated the likelihood of patient survival in 7-day periods. Physicians typically request that patients return 1 week after their initial cancer diagnosis; therefore, this estimation was a realistic form of measurement.

**2.3.2. Independent variables.** After we selected newly diagnosed cancer patients from the Cancer Registry and Death Registry databases, we used the NHI claims database to extract information for the independent variables. We divided these variables into those related to patients and those related to providers. The patient attributes that we included were age, sex, monthly payroll bracket, urbanization<sup>[33]</sup> (high, medium, or low), comorbidities (Charlson comorbidity index [CCI] score), and cancer stage. The provider attributes used in this study were physician age, physician sex, hospital size (medical center, regional hospital, local hospital, or clinic), and hospital urbanization level (high, medium, or low).

### 2.4. Statistics

We investigated the FDFT and FDD distributions to observe general trends in the treatment and survival outlook of oral cancer patients. We then calculated the Kaplan–Meier estimator to determine the difference in survival rates between the over-cutoff and under-cutoff groups. The Kaplan–Meier estimator was used in this study because of its simplicity; Kaplan–Meier survival curves depict the relationship between survival probability and elapsed time. We calculated overall patient survival rates and compared event-free 5-year survival rates for the 2 groups. Delays in cancer treatment were arbitrarily defined in increments of 7 days (to a total of 60 days) to verify trends, and the results were summarized in 1 table. We then performed logistic regression to

**Table 1**

**The distribution of durations from the first time diagnosis to the first time treatment among patients with cancer.**

	No.	Mean	SD	Min	Max	Median	Mode
F-T	2703	22.45	18.91	1	271	18	15
F-D	2703	1363.33	473.06	366	2182	1573	1681

F-D = first time diagnosed date–death date, F-T = first time diagnosed date–first time treatment date, SD = standard deviation.

**Table 2**

**The summary of survival risk of oral cancer and survival days between under and over cutoff point groups in the cutoff of 7 and 21 days.**

Group	No.	Events	Survival days				Log rank
			Mean	SD	Median	SD	
<7 days	102	49	1506.756	63.187	1941	213.322	0.205
>7 days	2601	1025	1536.735	13.631	1836	12.49	
14 days							0.417
<21 days	1583	598	1568.752	17.519	1881	40.591	0.037
>21 days	1120	476	1497.188	20.180	1821	12.231	
28 days							0.001
60 days							0.002

Oral cancer included cancer of mouth, oropharyngeal cancer, and hypopharyngeal cancer. SD = standard deviation.

identify determining factors. SAS 9.3.1 (SAS Institute, Cary, NC) and SPSS 20.0 (SPSS Inc., Chicago, IL) were used for all statistical analyses. The alpha value indicated significance at the 0.05 level.

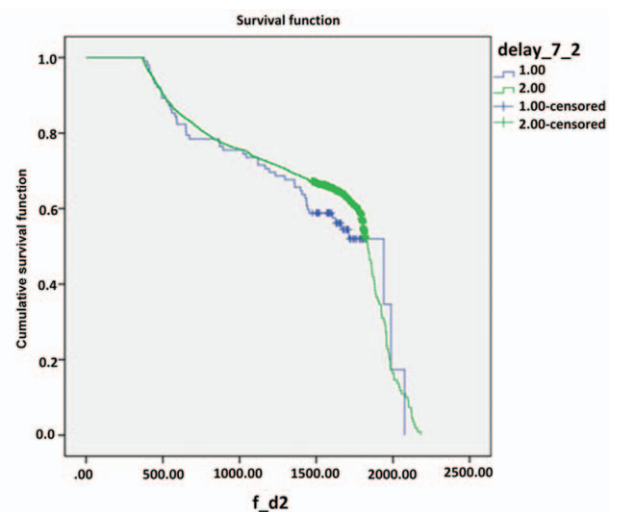
**3. Results**

Table 1 displays the distributions of FDFT and FDD among all patients. The average time between diagnosis and initial treatment was approximately 22.45 days, with a median and a mode of 18 and 15 days, respectively. This finding indicated that patients typically received their first treatment, regardless of treatment type, during the 2 office visits following a cancer diagnosis. The average survival duration was 1363 days (approximately 3.7 years), with a wide range (standard deviation: 473.06 days), and the median and the mode were 1573 and 1681 days, respectively.

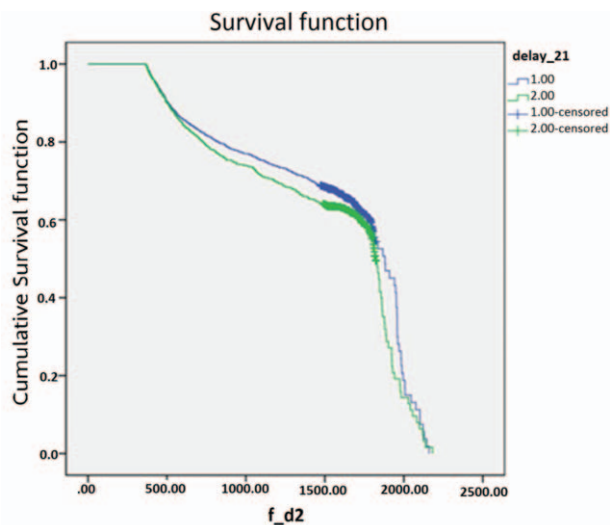
To assess the distribution of durations until initial treatment, we summarized the Kaplan–Meier survival curves generated using 7-day delay periods until a total of 60 days was reached (Table 2). Notably, the 2 groups of oral cancer patients exhibited no statistical differences in survival until durations of 2 or 3 weeks until initial treatment were considered. We used the Kaplan–Meier model to investigate the differences in patients’ survival outlooks with a 7-day cutoff and a 21-day cutoff (Table 2 and Figs. 1 and 2). When the cutoff point was 7 days, the under-cutoff group survived an average of 30 days less than the over-cutoff group, although this difference was not significant. In contrast, the average length of survival was 71 days longer (1568.75–1497.18) in the under-cutoff group than in the over-cutoff group when the cutoff point was 21 days ( $P=0.037$ ) (Table 2). Survival duration differences between the under- and over-cutoff groups gradually increased with increasing cutoff durations (114 and 221 days for cutoffs of 28 and 60 days, respectively; data not shown).

Differences in survival duration were significant if treatment was delayed for 21 days or longer. Table 3 presents the patient characteristics of the under- and over-cutoff groups with 21 days as the cutoff point and the logistic regression model for

determining factors. Delayed initial treatment was more likely for older patients, particularly patients older than 70 years (odds ratio [OR]=2.07, 95% confidence interval [CI]=1.21–3.53,  $P=0.022$ ). Although income and CCI score were not significant factors in the model results, an upside-down U-curve relationship between the likelihood of delayed treatment and income was observed. Patients in the low-income group had a higher risk of delaying their own treatment compared with the treatment of their dependents, whereas high-income patients tended to schedule earlier treatment. In addition, patients with a CCI score greater than 3 (more serious) had a lower likelihood of delayed treatment than patients with a CCI score of 0 (OR=0.76, 95% CI=0.59–0.98).



**Figure 1.** Kaplan–Meier curves for 5 years survival in patients with oral cancer between under and over cutoff groups in the cutoff of 7 days, (1) <7 days and (2) >7 days, cumulative survival function, survival function.



**Figure 2.** Kaplan–Meier curves for 5 years survival in patients with oral cancer between under and over cutoff groups in the cutoff of 21 days, (1) <21 days and (2) >21 days, cumulative survival function, survival function.

Patients treated at hospitals in areas of medium urbanization had a lower likelihood of delaying their initial treatment than patients treated at hospitals in highly urbanized areas (OR = 0.55, 95% CI = 0.35–0.87,  $P = 0.01$ ).

**4. Discussion**

Oral cancer is one of the most common types of cancer in Taiwan, largely due to the popularity of carcinogenic substances such as tobacco, betel quid, and alcohol.<sup>[34,35]</sup> According to a Cancer Registry report, the age-standardized incidence and mortality rates for oral cancer were 22.3 and 8.1, respectively, in 2012. Although the government provides free screenings for high-risk groups, this mortality rate has remained high. The major reason for this phenomenon is that oral cancer may not be caught until it has reached an advanced stage. Current protocols offer no initial treatment recommendations; therefore, physicians should urge patients to schedule initial treatment as soon as possible and within 3 weeks of diagnosis.

This study found that patients generally sought treatment after approximately 1 to 2 weeks. Most individuals are aware that even with an early diagnosis, it is challenging to treat cancer. However, few studies have focused on the early treatment stages for various types of cancer, and the impact of treatment delay on

**Table 3**

**The characteristics between under and over cutoff groups in the cutoff point of 21 days.**

		No.	<21	>21	Logistics model			
					OR	95% CI		P
Sex	Male	2483	1466	1017	0.89	0.59	1.34	0.568
	Female	220	117	103				
Age	<39	278	167	111	1.01	0.65	1.55	0.970
	40–49	804	489	315				
	50–59	908	534	374				
	60–69	434	248	186				
	>70	271	141	130				
Income	Dependent	370	212	158	1.56	1.00	2.42	0.048*
	<17,280	458	251	207				
	17,281–36,300	1464	858	606				
	36,301–72,800	382	239	143				
	>72,801	29	23	6				
Urbanization	High	736	429	307	1.03	0.79	1.36	0.811
	Median	427	244	183				
	Low	334	192	142				
CCI	0	1049	592	457	1.07	0.78	1.46	0.675
	1	274	157	117				
	2	111	65	46				
	≥3	1269	769	500				
N_STAGE	0	12	9	3	1.60	0.14	18.38	0.706
	1	576	361	215				
	2	548	328	220				
	3	454	255	199				
	4	1113	630	483				
Provider age		2516	1467	1049	0.98	0.97	0.98	0.024*
prsn_sex	Male	2306	1360	946	1.35	0.80	2.28	0.263
	Female	119	54	65				
Hospital level	Medical C	1810	1042	768	1.02	0.76	1.37	0.881
	Region	605	374	231				
	Local	104	56	48				
	Clinic	30	21	9				
Hospital area	High	2020	1160	860	0.55	0.35	0.87	0.010*
	Median	248	171	77				
	Low	25	15	10				

CCI = Charlson comorbidity index, CI = confidence interval, OR = odds ratio.  
\*  $P < 0.05$ .



oncologic outcomes is poorly defined. Randomized controlled trials cannot evaluate whether delayed treatment results in poorer prognosis. In this study, we found that when the cutoff point was 21 days, patients with oral cancer had significantly shorter survival durations (by approximately 70 days) if treatment was delayed beyond the cutoff.

Studies have also demonstrated that a lengthy duration from the first appearance of symptoms or diagnosis to initial treatment<sup>[36–40]</sup> can be influenced by patient psychology and by provider attributes, such as a long waiting list. Prior research has indicated that 2 factors linked to a delay in treatment are the recognition and interpretation of symptoms and the fear of consultation.<sup>[41]</sup> In addition, in certain countries, there are long waiting lists for patients, and the effectiveness of delayed cancer treatments cannot be estimated. Delay durations can vary greatly due to methodological differences and inconsistent measurements.<sup>[42,43]</sup> Studies have found that average patient-related and professional (provider) delays are at least 3 months and 3 weeks, respectively.<sup>[44–46]</sup> Stefanuto et al<sup>[45]</sup> stated that the average time between a patient first becoming aware of symptoms and consulting a healthcare provider was 3.5 to 5.4 months and that the other periods of delay, including time to referral to specialist, time to biopsy, and time to surgery, were 14 to 21 weeks. Patients diagnosed with cancer often do not realize the seriousness of their conditions before consultation, and fear of cancer usually influences help-seeking behavior after an initial consultation.<sup>[31]</sup> Previous studies have demonstrated that delays in treatment can be attributed to several factors. One study found that the cancer management profiles of physicians varied widely for prostate cancer.<sup>[47]</sup>

Among the types of hospitals surveyed (clinics, area hospitals, regional hospitals, and medical centers), smaller hospitals may delay treatment because they lack a comprehensive treatment plan or are unable to efficiently serve large numbers of patients. By contrast, higher level hospitals may delay treatment due to lengthy waiting lists or a lack of physical space for more patients. In this study, we did not identify hospital type as a determining factor for duration until treatment. A possible explanation for this finding is that NHI coverage eliminates financial or geographic barriers to a degree and promotes improvement in the quality of cancer care provided by hospitals at different levels.

Most cancer research communities continue to agree that early detection is important for providing appropriate treatment to reduce disease burdens and mortality rates.<sup>[48,49]</sup> In this study, we did not raise awareness of “delay” in terms of this term’s linguistic definition or categorization, both of which have been inconsistent across numerous studies. We instead determined the average interval between initial diagnosis and treatment among patients with oral cancer. Our evidence creates a foundation for further discussion on cancer treatment and supports efforts to increase patient awareness.

Certain limitations of this study must be addressed. First, we did not have database access to the health status of patients whose physicians prescribed nonaggressive treatment until surgery was possible. Second, the examined database may also lack information regarding cancer treatment protocols that use tools linked to cancer stage. For example, hepatocellular carcinoma therapy involves the use of several criteria that are indicative of patients’ choices regarding their treatment schedule. Third, although we conducted NHI claim databases and Cancer Registry and Death Registry databases that provided rich information in population base. However, we have to notice that poor quality and details in slight degree inherited from large

sample sizes databases. Finally, concerns regarding generalizability must be considered. Because we only included patients with oral cancer in analyses of initial treatment duration, these findings may not apply to patients with other types of cancer.

Although these limitations raise issues that future studies can address, our study remains valuable because it provides a population-based survey of the duration from initial diagnosis to initial treatment for oral cancer. The attitudes, beliefs, and social contexts of oral cancer patients influence their treatment-seeking behaviors. Patients usually request additional counseling in situations involving catastrophic illness and delay early treatment. Therefore, the government should advocate the merits of the referral system for cancer treatment or improve quality assurance for cancer diagnoses across different types of hospitals. Health authorities should also educate patients or use a case manager to encourage prompt treatment within 3 weeks and should provide screening and prevention services, particularly for high-risk groups, to reduce mortality risk.

## References

- Caplan L. Delay in breast cancer: implications for stage at diagnosis and survival. *Front Public Health* 2014;2:87.
- McGee SA, Durham DD, Tse CK, et al. Determinants of breast cancer treatment delay differ for African American and White women. *Cancer Epidemiol Biomarkers Prev* 2013;22:1227–38.
- Diaconescu R, Lafond C, Whittom R. Treatment delays in non-small cell lung cancer and their prognostic implications. *J Thorac Oncol* 2011;6:1254–9.
- Perri T, Issakov G, Ben-Baruch G, et al. Effect of treatment delay on survival in patients with cervical cancer: a historical cohort study. *Int J Gynecol Cancer* 2014;24:1326–32.
- van Harten MC, de Ridder M, Hamming-Vrieze O, et al. The association of treatment delay and prognosis in head and neck squamous cell carcinoma (HNSCC) patients in a Dutch comprehensive cancer center. *Oral Oncol* 2014;50:282–90.
- Renzi C, Mastroeni S, Mannoanparampil TJ, et al. Delay in diagnosis and treatment of squamous cell carcinoma of the skin. *Acta Derm Venereol* 2010;90:595–601.
- Smith MM, Abrol A, Gardner GM. Assessing delays in laryngeal cancer treatment. *Laryngoscope* 2016;126:1612–5.
- Andersen RS, Vedsted P, Olesen F, et al. Patient delay in cancer studies: a discussion of methods and measures. *BMC Health Serv Res* 2009;9:189.
- Shieh SH, Hsieh VC, Liu SH, et al. Delayed time from first medical visit to diagnosis for breast cancer patients in Taiwan. *J Formos Med Assoc* 2014;113:696–703.
- Neal RD. Do diagnostic delays in cancer matter? *Br J Cancer* 2009;101(suppl 2):S9–12.
- Chiang CJ, Lo WC, Yang YW, et al. Incidence and survival of adult cancer patients in Taiwan, 2002–2012. *J Formos Med Assoc* 2016;1–3. <http://dx.doi.org/10.1016/j.jfma.2015.10.011>. [Epub ahead of print].
- Su CC, Lin YY, Chang TK, et al. Incidence of oral cancer in relation to nickel and arsenic concentrations in farm soils of patients’ residential areas in Taiwan. *BMC Public Health* 2010;10:67.
- Chiang CJ, Chen YC, Chen CJ, et al. Cancer trends in Taiwan. *Jpn J Clin Oncol* 2010;40:897–904.
- Lee CC, Chien SH, Hung SK, et al. Effect of individual and neighborhood socioeconomic status on oral cancer survival. *Oral Oncol* 2012;48:253–61.
- Brocklehurst P, Kujan O, O’Malley LA, et al. Screening programmes for the early detection and prevention of oral cancer. *Cochrane Database Syst Rev* 2013;Art. No.: CD004150. DOI: 10.1002/14651858.CD004150.pub4.
- Centelles PV, Seoane-Romero JM, Gómez I, et al. Timing of Oral Cancer Diagnosis: Implications for Prognosis and Survival, *Oral Cancer*. Dr. Kalu U. E. Ogbureke (Ed.), In Tech EU: Rijeka, Croatia, 2012. DOI: 10.5772/30591. Available from: <http://www.intechopen.com/books/oral-cancer/timing-of-oral-cancer-diagnosis-implications-for-prognosis-and-survival>.
- Macleod U, Mitchell ED, Burgess C, et al. Risk factors for delayed presentation and referral of symptomatic cancer: evidence for common cancers. *Br J Cancer* 2009;101(suppl 2):S92–101.

- [18] Sawicki M, Szczyrek M, Krawczyk P, et al. Reasons for delay in diagnosis and treatment of lung cancer among patients in Lublin Voivodeship who were consulted in Thoracic Surgery Department. *Ann Agric Environ Med* 2013;20:72–6.
- [19] Hershman DL, Wang X, McBride R, et al. Delay in initiating adjuvant radiotherapy following breast conservation surgery and its impact on survival. *Int J Radiat Oncol Biol Phys* 2006;65:1353–60.
- [20] Ristvedt SL, Trinkaus KM. Psychological factors related to delay in consultation for cancer symptoms. *Psychooncology* 2005;14:339–50.
- [21] Scott SE, Grunfeld EA, McGurk M. Patient's delay in oral cancer: a systematic review. *Community Dent Oral Epidemiol* 2006;34:337–43.
- [22] Panzarella V, Pizzo G, Calvino F, et al. Diagnostic delay in oral squamous cell carcinoma: the role of cognitive and psychological variables. *Int J Oral Sci* 2014;6:39–45.
- [23] Diz Dios P, Padron Gonzalez N, Seoane Leston J, et al. "Scheduling delay" in oral cancer diagnosis: a new protagonist. *Oral Oncol* 2005;41:142–6.
- [24] McLeod NM, Saeed NR, Ali EA. Oral cancer: delays in referral and diagnosis persist. *Br Dent J* 2005;198:681–4.
- [25] Dwivedi A, Dwivedi S, Deo S, et al. An epidemiological study on delay in treatment initiation of cancer patients. *Health* 2012;4:66–79.
- [26] Macia F, Pumarega J, Gallen M, et al. Time from (clinical or certainty) diagnosis to treatment onset in cancer patients: the choice of diagnostic date strongly influences differences in therapeutic delay by tumor site and stage. *J Clin Epidemiol* 2013;66:928–39.
- [27] Dang-Tan T, Trotter H, Mery LS, et al. Delays in diagnosis and treatment among children and adolescents with cancer in Canada. *Pediatr Blood Cancer* 2008;51:468–74.
- [28] Olesen F, Hansen RP, Vedsted P. Delay in diagnosis: the experience in Denmark. *Br J Cancer* 2009;101(suppl 2):S5–8.
- [29] Dobson CM, Russell AJ, Rubin GP. Patient delay in cancer diagnosis: what do we really mean and can we be more specific? *BMC Health Serv Res* 2014;14:387.
- [30] Unger-Saldana K, Infante-Castaneda C. Delay of medical care for symptomatic breast cancer: a literature review. *Salud Publica Mex* 2009;51(suppl 2):s270–85.
- [31] Rogers SN, Vedpathak SV, Lowe D. Reasons for delayed presentation in oral and oropharyngeal cancer: the patients perspective. *Br J Oral Maxillofac Surg* 2011;49:349–53.
- [32] Agarwal AK, Sethi A, Sareen D, et al. Treatment delay in oral and oropharyngeal cancer in our population: the role of socio-economic factors and health-seeking behaviour. *Indian J Otolaryngol Head Neck Surg* 2011;63:145–50.
- [33] Liu C-Y, Hung Y-T, Chuang Y-L, et al. Incorporating development stratification of Taiwan townships into sampling design of large scale health interview survey. *J Health Manage* 2006;4:1–22.
- [34] Wen CP, Tsai SP, Cheng TY, et al. Uncovering the relation between betel quid chewing and cigarette smoking in Taiwan. *Tob Control* 2005;14 (suppl 1):i16–22.
- [35] Ko YC, Huang YL, Lee CH, et al. Betel quid chewing, cigarette smoking and alcohol consumption related to oral cancer in Taiwan. *J Oral Pathol Med* 1995;24:450–3.
- [36] Dwivedi AK, Dwivedi SN, Deo S, et al. An epidemiological study on delay in treatment initiation of cancer patients. *Health* 2012;4:66–79.
- [37] Hansen RP, Vedsted P, Sokolowski I, et al. Time intervals from first symptom to treatment of cancer: a cohort study of 2,212 newly diagnosed cancer patients. *BMC Health Serv Res* 2011;11:284.
- [38] Nikonova A, Guirguis HR, Buckstein R, et al. Predictors of delay in diagnosis and treatment in diffuse large B-cell lymphoma and impact on survival. *Br J Haematol* 2015;168:492–500.
- [39] Radzikowska E, Roszkowski-Sliz K, Glaz P. The impact of timeliness of care on survival in non-small cell lung cancer patients. *Pneumonol Alergol Pol* 2012;80:422–9.
- [40] Tomlinson C, Wong C, Au HJ, et al. Factors associated with delays to medical assessment and diagnosis for patients with colorectal cancer. *Can Fam Physician* 2012;58:e495–501.
- [41] Smith LK, Pope C, Botha JL. Patients' help-seeking experiences and delay in cancer presentation: a qualitative synthesis. *Lancet* 2005;366:825–31.
- [42] Gomez I, Warnakulasuriya S, Varela-Centelles PI, et al. Is early diagnosis of oral cancer a feasible objective? Who is to blame for diagnostic delay? *Oral Dis* 2010;16:333–42.
- [43] Walter F, Webster A, Scott S, et al. The Andersen model of total patient delay: a systematic review of its application in cancer diagnosis. *J Health Serv Res Policy* 2012;17:110–8.
- [44] Rogers SN, Pabla R, McSorley A, et al. An assessment of deprivation as a factor in the delays in presentation, diagnosis and treatment in patients with oral and oropharyngeal squamous cell carcinoma. *Oral Oncol* 2007;43:648–55.
- [45] Stefanuto P, Doucet JC, Robertson C. Delays in treatment of oral cancer: a review of the current literature. *Oral Surg Oral Med Oral Pathol Oral Radiol* 2014;117:424–9.
- [46] Jafari A, Najafi S, Moradi F, et al. Delay in the diagnosis and treatment of oral cancer. *J Dent* 2013;14:146–50.
- [47] Hoffman KE, Niu J, Shen Y, et al. Physician variation in management of low-risk prostate cancer: a population-based cohort study. *JAMA Intern Med* 2014;174:1450–9.
- [48] Cleveland JL, Thornton-Evans G. Total diagnostic delay in oral cancer may be related to advanced disease stage at diagnosis. *J Evid Based Dent Pract* 2012;12:84–6.
- [49] Peacock ZS, Pogrel MA, Schmidt BL. Exploring the reasons for delay in treatment of oral cancer. *J Am Dent Assoc* 2008;139:1346–52.