



## Review Article

Current and future options for dental pulp therapy<sup>☆</sup>

Takahiko Morotomi, Ayako Washio, Chiaki Kitamura\*

Division of Endodontics and Restorative Dentistry, Department of Science of Oral Functions, Kyushu Dental University, 2-6-1 Manazuru, Kokurakita-ku, Kitakyushu 803-8580, Japan



## ARTICLE INFO

## Article history:

Received 31 January 2018

Received in revised form 13 July 2018

Accepted 10 September 2018

## Keywords:

Endodontics

Dentin-pulp complex

Direct pulp capping

Pulpotomy

Regeneration therapy

Tissue engineering

## SUMMARY

Dental pulp is a connective tissue and has functions that include initiative, formative, protective, nutritive, and reparative activities. However, it has relatively low compliance, because it is enclosed in hard tissue. Its low compliance against damage, such as dental caries, results in the frequent removal of dental pulp during endodontic therapy. Loss of dental pulp frequently leads to fragility of the tooth, and eventually, a deterioration in the patient's quality of life. With the development of biomaterials such as bioceramics and advances in pulp biology such as the identification of dental pulp stem cells, novel ideas for the preservation of dental pulp, the regenerative therapy of dental pulp, and new biomaterials for direct pulp capping have now been proposed. Therapies for dental pulp are classified into three categories; direct pulp capping, vital pulp amputation, and treatment for non-vital teeth. In this review, we discuss current and future treatment options in these therapies.

© 2018 The Authors. Published by Elsevier Ltd on behalf of The Japanese Association for Dental Science. This is an open access article under the CC BY-NC-ND license (<http://creativecommons.org/licenses/by-nc-nd/4.0/>).

## 1. Introduction

Dental pulp, surrounded by dentin, supports tooth vitality through the supply of essential factors via apical foramen and plays a key role in tooth maintenance [1]. Through the apical foramen, blood vessels supply nutrients and remove waste products, and the neural network indicates the presence of harmful stimuli through pain [2]. Various immune cells in the pulp including dendritic cells, macrophages, and T-lymphocytes prevent the invasion of microorganisms and other foreign antigens [2]. When sound dentin has been lost due to tooth wear, fracture, or caries, odontoblasts or odontoblast-like cells repair the tooth by depositing tertiary dentin, which is reactionary and reparative dentin, on the pulp chamber surface [2].

After the progression of dental caries and/or tooth fractures in a tooth crown, a bacterial infection and subsequent inflammatory response of dental pulp occurs, and the internal pressure in the pulp chamber significantly increases, resulting in pulp tissue ischemia with severe pain [2]. To release patients from the pain and eliminate infection of dental pulp, dentists eventually remove dental pulp by pulpectomy [3]. If pulpectomy is not performed, ischemia develops

through impaired blood circulation, followed by pulp necrosis and periapical disease [4].

Resistance to external stimuli decreases in non-vital teeth due to complete loss of perception and immune functions, and the teeth become fragile due to loss of metabolic capacity [3]. Additionally, a non-vital tooth is immunocompromised and often re-infected by bacteria. Loss of sensation when the re-infection occurs can enable the progression of dental caries. The success rate of root canal retreatment is not high [5–8], and it is often necessary to repeat root canal treatment. Repetition of root canal treatment makes teeth more fragile and leads to cracking and/or fracture of the roots. As a result, the tooth has to be extracted, leading to a deterioration in the quality of life.

It is believed that a lot of root canal treatments and tooth extractions could be avoided if the proper direct pulp capping is carried out or pulp regeneration therapy is developed. This review will focus on potential approach for dental pulp preservation and regeneration therapies.

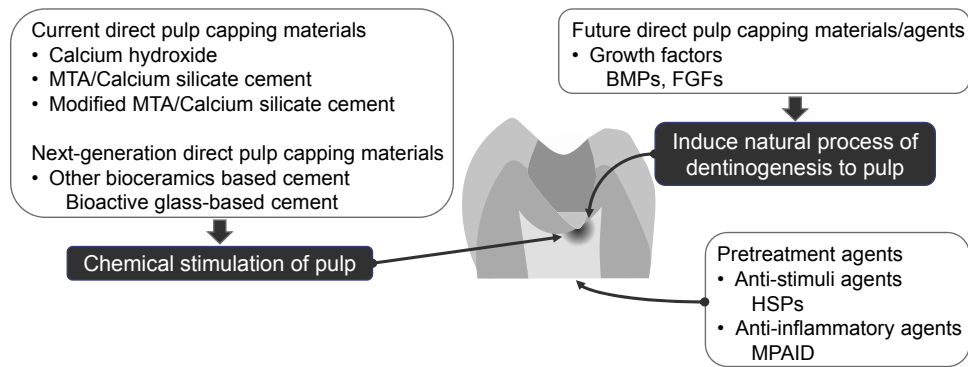
## 2. Current trends and perspectives of direct pulp capping

Untreated exposure of pulp to the oral cavity is the cause of pulpitis and pulp necrosis [9]; direct pulp capping or pulpotomy are clinically carried out in order to avoid pulp death. Direct pulp capping with dental materials is used to treat exposed vital pulp to facilitate the formation of reparative dentin. Generally, the most

<sup>☆</sup> Scientific field of dental Science: Endodontology.

\* Corresponding author.

E-mail address: [r06kitamura@fa.kyu-dent.ac.jp](mailto:r06kitamura@fa.kyu-dent.ac.jp) (C. Kitamura).



**Figure 1.** Current and future direct capping materials/agents.

Current direct pulp capping is the reaction of dental pulp to the chemical stimulation. Ideal direct pulp capping materials/agents is inducing dentinogenesis similar with natural biological process to pulp. Application of anti-stimuli and/or anti-inflammatory agents in combination with the direct pulp capping materials/agents will be affective.

widely used direct pulp capping agents are calcium hydroxide and mineral trioxide aggregate (MTA). In this section, we will focus on current and future direct capping materials/agents (Fig. 1).

### 2.1. Calcium hydroxide as a direct pulp capping material

Calcium hydroxide has been traditionally considered the “gold standard” of direct pulp capping materials and has been used for several decades [10]. Calcium hydroxide has a high pH of approximately 12, which provides excellent antibacterial properties [10]. Additionally, this high pH induces necrosis and mineralization directly beneath the material [11,12].

Calcium hydroxide materials are classified into 2 types: one-paste non-setting type and two-paste self-setting type. The major disadvantages of one-paste non-setting type calcium hydroxide systems are their lack of setting, weak physical properties, and gradual dissolution [9]. To improve these disadvantages, a curable two-paste (base/catalyst paste) calcium hydroxide system was developed and widely used. However, hardened materials show solubility, which may lead to the formation of dead space and microleakage [13,14]. In addition, two-paste calcium hydroxide exhibits more cytotoxic effects than do non-setting one-paste calcium hydroxide systems [15], possibly due to their additional components, including disalicylate, accelerator, and/or plasticizer [16]. Both types of calcium hydroxide materials induce heterogeneous dentin bridge formation with tunnel defects [9,17]. Tunnel defects in the dentin bridge fail to provide barriers, which are ideal biological sealants against bacterial infection.

### 2.2. Mineral trioxide aggregate (MTA) as a direct pulp capping material

MTA is known as one of bioactive materials in endodontics [18]. In recent years, MTA has been widely used as a direct pulp capping material. MTA includes a Portland cement component and shows antibacterial activity through the release of calcium hydroxide, which explains the similar action with the calcium hydroxide paste [19]. In addition, MTA has higher sealing ability, lower solubility, higher physical strength and stability than calcium hydroxide [9,20,21]. Further, MTA can set in a moist environment, prevent bacterial infiltration, and produce thicker dentin bridge formation with a lesser inflammatory response, less hyperemia, and less necrosis of pulp tissue compared to calcium hydroxide [21–25]. Many clinical reports demonstrated that the success rate of direct pulp capping was higher with MTA than with calcium hydroxide [26–30].

On the other hand, it has been reported that MTA shows several disadvantages; discoloration [26], the presence of toxic elements

such as arsenic [31], higher cytotoxicity in its freshly mixed state [32], high pH during setting [33], poor handling [34], long setting time [35], and requirement of sufficient moisture during hardening [36,37].

### 2.3. Improved MTA/calcium silicates materials for direct pulp capping

Several MTA-derived materials have been provided in order to overcome the disadvantages of original MTA [35,38–40]. For example, the addition of calcium chloride to MTA resulted in a lower setting time and good biocompatibility [41], and replacing the Portland cement component in MTA with pure tricalcium silicate resulted in a biomaterial with improved physico-mechanical properties [42].

Light-curable resin-modified calcium-silicate based materials have also been developed. Compared to conventional MTA materials, the resin-modified light-curable cement has several advantages; immediate light-polymerization, prevention of materials washing out, and superior physical properties [43]. However, it is reported that the resin-modified light-curable MTA cement showed more cytotoxic than resin-free calcium silicates/MTA [15]. The clinical reports about these improved MTA/calcium silicates materials are insufficient. Further research is needed to evaluate these new materials for use in direct pulp capping.

### 2.4. Potential of bioactive glass-based cement for direct pulp capping

On one side of the favorable therapeutic result, it was reported that calcium silicates-based materials, including MTA, contain trace amounts of heavy metals [44], and some of them contain non-negligible amounts of arsenic [31]. An ideal pulp capping material should adhere to tooth substrate; maintain a sufficient seal; be insoluble in tissue fluids, dimensionally stable, non-resorbable, nontoxic, non-carcinogenic, non-genotoxic, and radiopaque; and exhibit biocompatibility and bioactivity [45–47]. No material currently available satisfies all desirable properties for direct pulp capping materials [47].

Bioactive glasses, one of the bioceramics comprised of silica ( $\text{SiO}_2$ ), sodium oxide ( $\text{Na}_2\text{O}$ ), calcium oxide ( $\text{CaO}$ ), and phosphorus pentoxide ( $\text{P}_2\text{O}_5$ ), are well-studied biomaterials [48]. Because bioactive glasses show a clinical ability to bond with bone through the formation of a hydroxyapatite layer on the surface [49,50], they have been used in the field of orthopedic surgery for bone engineering [51,52]. We hypothesized that bioactive glasses could be used in dental treatment, and we have recently developed bioactive glass-based cement [53]. The prototype of the bioactive glass-based

cement exhibited hydroxyapatite-like precipitation on the surface of the hardened cement, a stable pH level, and biocompatibility, without exhibiting cytotoxic effects [53]. From this prototype, a newly bioactive glass-based root canal sealer (Nishika Canal Sealer BG; Nippon Shika Yakuhin Co., Ltd., Yamaguchi, Japan) has been developed and is now being commercially marketed. Furthermore, this cement has the ability to induce reparative dentin formation on the surface of exposed dental pulp when it is applied as a direct pulp capping agent [54]. We are now focusing on the development of an improved version of bioactive glass-based cement as a direct pulp capping material.

### 2.5. Future direct pulp capping materials

Regardless of which materials are used in present methods of direct pulp capping, the mechanism of reparative dentin formation is a reaction of dental pulp to the chemical stimulation of materials with a high pH, unlike the process of dentin-pulp complex formation. The development of a novel therapy that induces wound healing and dentinogenesis similar to the natural process is expected.

Growth factors are candidates for direct pulp capping agents [55]. Bone morphogenetic protein (BMP)-2, a member of the Transforming growth factor (TGF)- $\beta$  super family, has been approved by the US Food and Drug Administration (FDA) for clinical use, such as oral maxillofacial surgery [56]. BMP-2 is known to induce differentiation of dental pulp stem cells into odontoblasts [57]. Previous studies demonstrated that BMP-2 has induced expression of dentin sialoprotein and dentin matrix protein-1, differentiation markers of odontoblasts [58,59], and activated Smad signaling pathway, one of the intracellular signal transduction mechanism to regulate the cell proliferation, differentiation, or other function, involved in the induction process in the odontoblastic cell line [60–62]. Besides BMP-2, other BMP family members such as BMP-4, -6, -7, and growth/differentiation factor (Gdf)-11 were indicated as important growth factors to induce dentinogenesis [63,64]. Besides BMPs, TGF- $\beta$ 1 plays a crucial role in odontoblast differentiation [65], and fibroblast growth factor (FGF)-2 has also been demonstrated to regulate odontogenesis and is released during pulp wound healing [66,67].

During the direct pulp capping procedure, dentists administer local anesthetics and perform cavity preparation, which can cause adverse effects, including damage to dental pulp. The major adverse effects of these procedures are heat stress and ischemia. Heat stress is produced by the rotary cutting instruments used to remove infected dental hard tissue and is one of the most severe exogenous stimuli for dental pulp [2,68]. Ischemia caused by local anesthetics [69–71] may induce hypoxia and starvation in dental pulp [72,73]. We previously showed that pulp cells have the capability to resist heat stress and ischemia [74,75] and that the combination of heat stress and starvation reciprocally reinforces the stimulations [76,77]. We also demonstrated that pre-treated odontoblastic cells with the fever-range heat stress (41 °C) survived with odontoblast-like properties after lethal heat stress, with the accumulation of heat shock proteins (HSPs) and the cell-cycle arrest [78]. Accumulation of HSPs and cell-cycle arrest induce cellular resistance to various stimuli [79–84]. Our studies suggest that HSPs may also be one of biological molecules to be considered as pretreatment agents for direct pulp capping.

How to regulate inflammation is also important for preserving dental pulp. Recently, we found that a macromolecular translocation inhibitor II (MTI-II) peptide anti-inflammatory drug (MPAID) may regulate the inflammatory response and maintain a protective response of dental pulp [85]. MTI-II, small nuclear acidic protein, was previously demonstrated to be an enhancer of the transcrip-

tional activity of glucocorticoid-bound glucocorticoid receptor, and MPAID was bioengineered from the structure of MTI-II as an inhibitor of NF- $\kappa$ B transactivation [86–88]. Anti-inflammatory agents similar to MPAID could be candidates for direct pulp capping or pretreatment agents.

## 3. Dentin-pulp complex regeneration following pulpotomy

Pulpotomy is a therapy performed on coronal partial inflamed pulp in order to avoid pulpectomy. In this section, we propose a novel strategy for dentin-pulp complex regeneration therapy performed after pulpotomy.

### 3.1. Problems in current pulpotomy

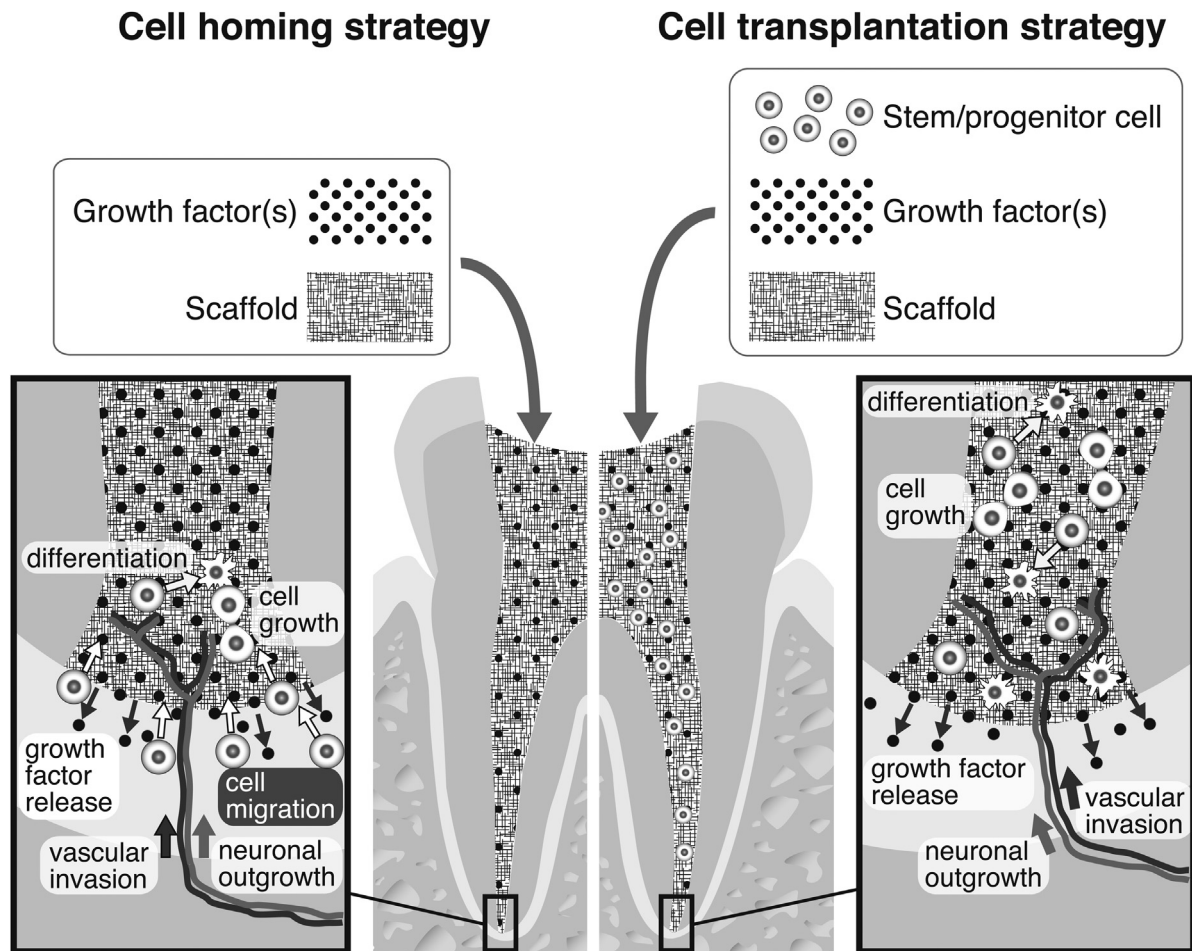
In the procedure of pulpotomy, coronal pulp is amputated surgically, and the surface of remaining root pulp is treated with a medicament such as calcium hydroxide or MTA at the root canal orifice in order to promote the formation of a dentin bridge [3,89]. A newly formed dentin bridge is porous hard tissue with a low degree of calcification [17,90]. The most important issue is that current pulpotomy never leads to the regeneration of the dentin-pulp complex that was lost in the coronal portion.

### 3.2. Novel strategy for local regeneration of the dentin-pulp complex following pulpotomy

It is well known that the induction of stem cells and capillary networks, the delivery system of growth factors, and scaffolds for cell proliferation and differentiation are essential for tissue regeneration [91,92]. For dentin-pulp complex regeneration following pulp amputation, it is possible to induce dental pulp stem cells and capillaries from the residual root pulp tissue and prepare a closed space using adhesive materials. Critical points include the choice of growth factor(s), delivery system of growth factor(s), and a suitable scaffold in order to induce stem cells and blood vessels from the residual pulp.

In previous research on dentin-pulp complex regeneration in rat amputated pulp, we used FGF-2 as the growth factor, gelatin hydrogels as the delivery system of FGF-2, and collagen sponges as the scaffold. FGF-2 is known to play important roles in the physiologic conditions of odontogenesis [93,94] as well as pathologic conditions [95–97]. Gelatin hydrogels have been developed for gradual and continual release of growth factors [98–101]. It has been demonstrated that the controlled release of FGF-2 from gelatin hydrogels induces the regeneration of angiogenesis [102], bone [103–105], periodontal tissues [106], and other tissues [107–109]. Collagen is a major macromolecular constituent of the dentin extracellular matrix (ECM) with excellent biocompatibility, and it is the most extensively studied naturally occurring material for dental tissue engineering [110]. We implanted FGF-2-incorporated gelatin hydrogel with collagen sponge on the amputated pulp surface of a rat upper first molar and found that controlled release of FGF-2 from gelatin hydrogel induced regeneration of pulp tissue and osteo-dentin-like hard tissue in the defect area [111,112]. These results suggest that the combination of FGF-2, gelatin hydrogels, and scaffolds may induce the local regeneration of the dentin-pulp complex after pulpotomy.

However, the induced dentin in previous studies did not have an ideal structure with dentinal tubules, and its quantity was insufficient for protecting the dental pulp or withstanding bite forces. These weak points should be overcome before clinical application. BMP-2 may be useful due to its demonstrated ability to induce *in vivo* dentin formation after pulpotomy [113], and other growth factors involved in dentinogenesis are also candidates, as mentioned before. Platelet-rich plasma (PRP) including growth factors



**Figure 2.** Two strategies for pulp regeneration therapy to non-vital mature permanent tooth.

In the cell homing strategy, growth factor(s) and scaffold are implanted into root canal. Released growth factor(s) from root canal induced stem/progenitor cell migration, vascular invasion, and neuronal outgrowth from periapical tissue. In the cell transplantation strategy, stem/progenitor cells are injected into root canal with growth factor(s) and scaffold. Released growth factor(s) induced vascular invasion and neuronal outgrowth from periapical tissue into the root canal.

is also a potential material; we found that it enhances differentiation of odontoblastic cells and alkaline phosphatase activity [114]. These results suggest that the suitable combination of growth factors or PRP may induce local regeneration of ideal dentin-pulp complex.

We sought a further suitable scaffold for the dentin-pulp complex regeneration therapy following pulpotomy. Besides collagen, several natural polymers, such as chitosan and gelatin, and synthetic polymers, such as D, L-lactide and glycolide (PLG) and polyglycolic acid (PGA), were exhibited to be used for the therapy [115–117]. Hyaluronic acid (HA), one of the glycosaminoglycans that are widely distributed in the human body, is known to play important roles in maintaining morphologic organization and anti-inflammatory effects [118,119], and is reported to be well-suited for tissue engineering material [120–124]. To clarify whether HA sponge is useful as a scaffold for dentin-pulp complex regeneration therapy, we carried out *in vitro* and *in vivo* studies and found that HA sponge has ideal properties to do so [125].

Unlike immature teeth with abundant blood flow and cells, local regeneration of the dentin-pulp complex following pulpotomy in mature teeth may be difficult. However, identification of the perfect combination of growth factors and the development of a delivery system for growth factors and scaffolds for cells would progress local regeneration therapy of dentin-pulp complex following pulpotomy [126].

#### 4. Dentin-pulp complex regeneration therapy for non-vital teeth after pulpectomy or pulp necrosis

The ultimate goal for endodontists or dentists is the regeneration of dental pulp for non-vital teeth after pulpectomy or pulp necrosis. In this section, we will discuss the possibility of pulp regeneration therapy for non-vital teeth.

##### 4.1. Revitalization/revascularization for non-vital, immature permanent teeth

Recently, a clinical protocol for the root revitalization/revascularization of non-vital immature permanent teeth has been introduced. In this protocol, a broach is inserted into the root canal in order to make the blood rise from the vessels of periapical tissue, followed by filling of calcium hydroxide or MTA on the blood clot residing in the root canal to recover vitality and root development [127]. However, it has been demonstrated that newly produced hard tissue at the end of the root by this protocol is not dentin-like but cementum-like and similar to periodontal ligament connective tissues [128]. Therefore, conventional revitalization/revascularization methods could not regenerate dentin-pulp complex. To lead true dentin-pulp complex regeneration by revitalization/revascularization, suitable scaffolds and growth factors which can induce the differentiation of dental



pulp cells containing odontoblast and dentin formation would be needed to apply into root canal, in addition to the induction of clot fibrin and cells from dental papilla or periodontal tissue.

#### 4.2. Pulp regeneration for non-vital mature permanent teeth

To achieve the entire dental pulp regeneration for non-vital mature permanent teeth, major two strategies are utilized in dental research; the cell homing strategy and the cell transplantation strategy (Fig. 2).

The cell homing strategy is achieved by the induction of stem/progenitor cells from periapical tissue around the apical area of the root. In this strategy, scaffolds impregnated with growth factors are injected into root canals to induce migration, proliferation, and differentiation of endogenous stem/progenitor cells residing around the root apex, through enlarged apical foramen [129]. The cell homing strategy might be easier to perform in a clinical setting than the cell transplantation strategy due to its cell-free approach, as there is no need to isolate or manipulate stem cells *in vitro* [129]. Unlike in immature teeth, there are no dental papilla cells that possess pluripotency in mature teeth. This strategy may rely on establishment of methods inducing stem cells residing around the root apex, for example, periodontal ligament stem cells.

The cell transplantation strategy is expected to realize a high success rate of dentin-pulp complex regeneration. To achieve this strategy, establishment of stem cell sources is essential. Dental pulp stem cells (DPSCs) were shown to exhibit the ability to form ectopic human dentin-pulp complex-like structures [130–132]. Recently, Nakashima et al. succeeded and reported the human dental pulp regeneration therapy by autologous transplantation of DPSC into pulpectomized teeth in 5 patients with irreversible pulpitis [133]. Besides DPSCs, several other types of stem cells or progenitor cells from dental tissues have been isolated and characterized, such as stem cells from human exfoliated teeth (SHED) [134], periodontal ligament stem cells (PDLSC) [135], stem cells from apical papilla (SCAP) [136], and dental follicle progenitor cells (DFPC) [137]. DPSCs, SHED, and SCAP are potentially suitable cell sources for dental pulp regeneration, because they are derived from pulp tissue or the precursor of pulp. The sources of these cells are extracted third molar or teeth for the purpose of an orthodontic, or extracted inflamed dental pulp [138]; however, these are very limited. For cell transplantation, exploration of other stem cell sources is important. A PDLSC was demonstrated to have the ability to differentiate into an odontogenic lineage cell [139]. Bone marrow derived mesenchymal cells (BMSCs), human bone marrow stromal cells (HMSCs), and adipose tissue derived mesenchymal stem cells (ADMSCs) are alternative source candidates [139,140]. It has also been demonstrated that induced pluripotent stem (iPS) cells are able to differentiate into dental mesenchymal cells *in vitro* and form dentin- and dental pulp-like structures *in vivo* [141,142].

In order to provide a sufficient number of cells similar to the off-the-shelf component at the time of treatment, establishing a dental stem cell banking system is essential. This establishment allows generalization of pulp regeneration therapy in endodontic therapy.

## 5. Conclusion

In this review, we discussed current and future endodontic therapies. Most current endodontic procedures are irreversible and sacrifice hard and soft tissue, making teeth vulnerable. Thanks to great strides in the field of biology and the development of biomaterials, new biological pulp capping agents and strategies of regeneration therapies will be realized over the next few decades. Although many more studies are required, the treatment options

presented here will change endodontic therapies and improve quality of life in patients.

## Conflict of interest statement

None declared

## Acknowledgement

This work was supported by Grants-in-Aid for Scientific Research 26293406 [Kitamura], 16K11559 [Morotomi], and 17K11711 [Washio] from the Ministry of Education, Science, and Culture of Japan.

## References

- [1] Rudolph P, editor. *Essentials of oral histology and embryology: a clinical approach*. 3rd ed. St. Louis, MO, USA: Mosby Elsevier; 2006.
- [2] Hargreaves KM, Goodis HE, editors. *Seltzer and Bender's dental pulp*. 3rd ed. Carol Stream, IL, USA: Quintessence Publishing; 2002.
- [3] Bergenholtz G, Hørsted-Bindslev P, Reit C. *Textbook of endodontology*. 2nd ed. Hoboken, NJ, USA: Wiley-Blackwell; 2009.
- [4] Heyeraas KJ, Kvinnsland I. Tissue pressure and blood flow in pulpal inflammation. *Proc Finn Dent Soc* 1982;88(Suppl. 1):393–401.
- [5] Van Nieuwenhuysen JP, Aouar M, D'Hoore W. Retreatment or radiographic monitoring in endodontics. *Int Endod J* 1994;27:75–81.
- [6] Rotstein I, Salehrabi R, Forrest JL. Endodontic treatment outcome: survey of oral health care professionals. *J Endod* 2006;32:399–403.
- [7] Imura N, Pinheiro ET, Gomes BP, Zaia AA, Ferraz CC, Souza-Filho FJ. The outcome of endodontic treatment: a retrospective study of 2000 cases performed by a specialist. *J Endod* 2007;33:1278–82.
- [8] Ng YL, Mann V, Gulabivala K. Outcome of secondary root canal treatment: a systematic review of the literature. *Int Endod J* 2008;41:1026–46.
- [9] Komabayashi T, Zhu Q, Eberhart R, Imai Y. Current status of direct pulp-capping materials for permanent teeth. *Dent Mater J* 2016;35:1–12.
- [10] Hilton TJ. Keys to clinical success with pulp capping: a review of the literature. *Oper Dent* 2009;34:615–25.
- [11] Chen L, Shen H, Suh BI. Bioactive dental restorative materials: a review. *Am J Dent* 2013;26:219–27.
- [12] Schröder U. Effects of calcium hydroxide-containing pulp-capping agents on pulp cell migration, proliferation, and differentiation. *J Dent Res* 1985;64:541–8.
- [13] Prosser HJ, Groffman DM, Wilson AD. The effect of composition on the erosion properties of calcium hydroxide cements. *J Dent Res* 1982;61:1431–5.
- [14] Cox CF, Suzuki S. Re-evaluating pulp protection: calcium hydroxide liners vs. cohesive hybridization. *J Am Dent Assoc* 1994;125:823–31.
- [15] Poggio C, Ceci M, Dagna A, Beltrami R, Colombo M, Chiesa M. *In vitro* cytotoxicity evaluation of different pulp capping materials: a comparative study. *Arh Hig Rada Toksikol* 2015;66:181–8.
- [16] Chen L, Suh BI. Cytotoxicity and biocompatibility of resin-free and resin-modified direct pulp capping materials: a state-of-the-art review. *Dent Mater J* 2017;36:1–7.
- [17] Reston EG, de Souza Costa CA. Scanning electron microscopy evaluation of the hard tissue barrier after pulp capping with calcium hydroxide, mineral trioxide aggregate (MTA) or ProRoot MTA. *Aust Endod J* 2009;35:78–84.
- [18] Jitaru S, Hodisan I, Timis L, Lucian A, Bud M. The use of bioceramics in endodontics – literature review. *Clujul Med* 2016;89:470–3.
- [19] Camilleri J. The chemical composition of mineral trioxide aggregate. *J Conserv Dent* 2008;11:141–3.
- [20] Natale LC, Rodrigues MC, Xavier TA, Simões A, de Souza DN, Braga RR. Ion release and mechanical properties of calcium silicate and calcium hydroxide materials used for pulp capping. *Int Endod J* 2015;48:89–94.
- [21] Tawil PZ, Duggan DJ, Galicia JC. Mineral trioxide aggregate (MTA): its history, composition, and clinical applications. *Compend Contin Educ Dent* 2015;36:247–64.
- [22] Ford TR, Torabinejad M, Abedi HR, Bakland LK, Kariyawasam SP. Using mineral trioxide aggregate as a pulp-capping material. *J Am Dent Assoc* 1996;127:1491–4.
- [23] Aeinehchi M, Eslami B, Ghanbariha M, Saffar AS. Mineral trioxide aggregate (MTA) and calcium hydroxide as pulp-capping agents in human teeth: a preliminary report. *Int Endod J* 2003;36:225–31.
- [24] Marques MS, Wesselink PR, Shemesh H. Outcome of direct pulp capping with mineral trioxide aggregate: a prospective study. *J Endod* 2015;41:1026–31.
- [25] Nair PN, Duncan HF, Pitt Ford TR, Luder HU. Histological, ultrastructural and quantitative investigations on the response of healthy human pulps to experimental capping with mineral trioxide aggregate: a randomized controlled trial. *Int Endod J* 2008;41:128–50.
- [26] Bogen G, Kim JS, Bakland LK. Direct pulp capping with mineral trioxide aggregate: an observational study. *J Am Dent Assoc* 2008;139:305–15.

- [27] Mente J, Hufnagel S, Leo M, Michel A, Gehrig H, Panagidis D, et al. Treatment outcome of mineral trioxide aggregate or calcium hydroxide direct pulp capping: long-term results. *J Endod* 2014;40:1746–51.
- [28] Hilton TJ, Ferracane JL, Mancl L. Comparison of CaOH with MTA for direct pulp capping: a PBRN randomized clinical trial. *J Dent Res* 2013;92:165–225.
- [29] Al-Hiyasat AS, Barriehi-Nusair KM, Al-Omari MA. The radiographic outcomes of direct pulp-capping procedures performed by dental students: a retrospective study. *J Am Dent Assoc* 2006;137:1699–705.
- [30] Barthel CR, Rosenkranz B, Leuenberg A, Roulet JF. Pulp capping of carious exposures: treatment outcome after 5 and 10 years: a retrospective study. *J Endod* 2000;26:525–8.
- [31] Monteiro Bramante C, Demarchi AC, de Moraes IG, Bernadinei N, Garcia RB, Spångberg LS, et al. Presence of arsenic in different types of MTA and white and gray Portland cement. *Oral Surg Oral Med Oral Pathol Oral Radiol Endod* 2008;106:909–13.
- [32] Balto HA. Attachment and morphological behavior of human periodontal ligament fibroblasts to mineral trioxide aggregate: a scanning electron microscope study. *J Endod* 2004;30:25–9.
- [33] Camilleri J. Characterization chemical activity of Portland cement and two experimental cements with potential for use in dentistry. *Int Endod J* 2008;41:791–9.
- [34] Santos AD, Moraes JC, Araújo EB, Yukimitu K, Valério Filho WV. Physicochemical properties of MTA and a novel experimental cement. *Int Endod J* 2005;38:443–7.
- [35] Torabinejad M, Hong CU, McDonald F, Pitt Ford TR. Physical and chemical properties of a new root-end filling material. *J Endod* 1995;21:349–53.
- [36] Torabinejad M, Chivian N. Clinical applications of mineral trioxide aggregate. *J Endod* 1999;25:197–205.
- [37] Walker MP, Diliberto A, Lee C. Effect of setting conditions on mineral trioxide aggregate flexural strength. *J Endod* 2006;32:334–6.
- [38] Gandolfi MG, Iacono F, Agee K, Siboni F, Tay F, Pashley DH, et al. Setting time and expansion in different soaking media of experimental accelerated calcium-silicate cements and ProRoot MTA. *Oral Surg Oral Med Oral Pathol Oral Radiol Endod* 2009;108:e39–45.
- [39] Zanini M, Sautier JM, Berdal A, Simon S. Biodentine induces immortalized murine pulp cell differentiation into odontoblast-like cells and stimulates biomineralization. *J Endod* 2012;38:1220–6.
- [40] Gandolfi MG, Siboni F, Botero T, Bossù M, Riccitiello F, Prati C. Calcium silicate and calcium hydroxide materials for pulp capping: biointeractivity, porosity, solubility and bioactivity of current formulations. *J Appl Biomater Funct Mater* 2015;13:43–60.
- [41] Bortoluzzi EA, Broon NJ, Bramante CM, Felipe WT, Tanomaru Filho M, Esberard RM. The influence of calcium chloride on the setting time, solubility, disintegration, and pH of mineral trioxide aggregate and white Portland cement with a radiopacifier. *J Endod* 2009;35:550–4.
- [42] Formosa LM, Mallia B, Camilleri J. The effect of curing conditions on the physical properties of tricalcium silicate cement for use as a dental biomaterial. *Int Endod J* 2012;45:326–36.
- [43] Nielsen MJ, Casey JA, VanderWeele RA, Vandewalle KS. Mechanical properties of new dental pulp-capping materials. *Gen Dent* 2016;64:44–8.
- [44] Demirkaya K, Can Demirdögen B, Öncel Torun Z, Erdem O, Çetinkaya S, Akay C. In vivo evaluation of the effects of hydraulic calcium silicate dental cements on plasma and liver aluminium levels in rats. *Eur J Oral Sci* 2016;124:75–81.
- [45] Camilleri J, Pitt Ford TR. Mineral trioxide aggregate: a review of the constituents and biological properties of the material. *Int Endod J* 2006;39:747–54.
- [46] Torabinejad M, Parirokh M. Mineral trioxide aggregate: a comprehensive literature review—part II: leakage and biocompatibility investigations. *J Endod* 2010;36:190–202.
- [47] Roberts HW, Toth JM, Berzins DW, Charlton DG. Mineral trioxide aggregate material use in endodontic treatment: a review of the literature. *Dent Mater* 2008;24:149–64.
- [48] Hench LL. The story of Bioglass®. *J Mater Sci Mater Med* 2006;17:967–78.
- [49] Kokubo T, Kushitani H, Sakka S, Kitsugi T, Yamamuro T. Solutions able to reproduce in vivo surface-structure changes in bioactive glass-ceramic A-W. *J Biomed Mater Res* 1990;24:721–34.
- [50] Kokubo T, Takadama H. How useful is SBF in predicting in vivo bone bioactivity. *Biomaterials* 2006;27:2907–15.
- [51] Pereira RDS, Menezes JD, Bonardi JP, Griza GL, Okamoto R, Hochuli-Vieira E. Histomorphometric and immunohistochemical assessment of RUNX2 and VEGF of Biogran™ and autogenous bone graft in human maxillary sinus bone augmentation: a prospective and randomized study. *Clin Implant Dent Relat Res* 2017;19:867–75.
- [52] Higuchi H, Kobayashi A, Ikeda K, Hatayama K, Yanagisawa S, Kato K. Efficacy of  $\beta$ -tricalcium phosphate graft into the bone defects after bone-patellar tendon-bone anterior cruciate ligament reconstruction. *J Knee Surg* 2017;30:467–73.
- [53] Washio A, Nakagawa A, Nishihara T, Maeda H, Kitamura C. Physicochemical properties of newly developed bioactive glass cement and its effects on various cells. *J Biomed Mater Res B Appl Biomater* 2015;103:373–80.
- [54] Hanada K, Morotomi T, Washio A, Yada N, Matsuo K, Teshima H, et al. In vitro and in vivo effects of a novel bioactive glass-based cement used as a direct pulp capping agent. *J Biomed Mater Res B Appl Biomater* 2018, <http://dx.doi.org/10.1002/jbm.b.34107> (in press, now).
- [55] Rutherford B, Fitzgerald M. A new biological approach to vital pulp therapy. *Crit Rev Oral Biol Med* 1995;6:218–29.
- [56] McKay WF, Peckham SM, Badura JM. A comprehensive clinical review of recombinant human bone morphogenetic protein-2 (INFUSE Bone Graft). *Int Orthop* 2007;31:729–34.
- [57] Iohara K, Nakashima M, Ito M, Ishikawa M, Nakashima A, Akamine A. Dentin regeneration by dental pulp stem cell therapy with recombinant human bone morphogenetic 2. *J Dent Res* 2004;83:590–5.
- [58] D'Souza RN, Cavender A, Sunavala G, Alvarez J, Ohshima T, Kulkarni AB, et al. Gene expression patterns of murine dentin matrix protein 1 (Dmp1) and dentin sialophosphoprotein (DSPP) suggest distinct development functions in vivo. *J Bone Miner Res* 1997;12:2040–9.
- [59] Qin C, D'Souza R, Feng JQ. Dentin matrix protein 1 (DMP1): new and important roles for biomineralization and phosphate homeostasis. *J Dent Res* 2007;86:1134–41.
- [60] Washio A, Kitamura C, Morotomi T, Terashita M, Nishihara T. Possible involvement of Smad signaling pathways in induction of odontoblastic properties in KN-3 cells by bone morphogenetic protein-2, a growth factor to induce dentin regeneration. *Int J Dent* 2012;2012, <http://dx.doi.org/10.1155/2012/258469>. Article ID 258469, 6 pages.
- [61] Nomiya M, Kitamura C, Tsujisawa T, Nagayoshi M, Morotomi T, Terashita M, et al. Effects of lipopolysaccharide on newly established rat dental pulp-derived cell line with odontoblastic properties. *J Endod* 2007;33:1187–91.
- [62] Morotomi T, Kawano S, Toyono T, Kitamura C, Terashita M, Uchida T, et al. In vitro differentiation of dental epithelial progenitor cells through epithelial-mesenchymal interactions. *Arch of Oral Biol* 2005;50:695–705.
- [63] Aberg T, Wozney J, Thesleff I. Expression patterns of bone morphogenetic proteins (Bmps) in the developing mouse tooth suggest roles in morphogenesis and cell differentiation. *Dev Dyn* 1997;210:383–96.
- [64] Nakashima M, Toyono T, Akamine A, Joyner A. Expression of growth/differentiation factor 11, a new member of the BMP/TGF $\beta$  superfamily during mouse embryogenesis. *Mech Dev* 1999;80:185–9.
- [65] Murray PE, Garcia-Godoy F, Hargreaves KM. Regenerative endodontics: a review of current status and a call for action. *J Endod* 2007;33:377–90.
- [66] Tsuboi T, Mizutani S, Nakano M, Hirukawa K, Togari A. Fgf-2 regulates enamel and dentine formation in mouse tooth germ. *Calcif Tissue Int* 2003;73:496–501.
- [67] Shimabukuro Y, Ueda M, Ozasa M, Anzai J, Takedachi M, Yanagita M, et al. Fibroblast growth factor-2 regulates the cell function of human dental pulp cells. *J Endod* 2009;35:1529–35.
- [68] Zach L. Pulp liability and repair: effect of restorative procedures. *Oral Surg Oral Med Oral Pathol* 1972;33:111–21.
- [69] Jacobsen I, Kerekes K. Long-term prognosis of traumatized permanent anterior teeth showing calcifying processes in pulp cavity. *Scand J Dent Res* 1977;85:588–98.
- [70] Kim S, Edwall L, Trowbridge H, Chien S. Effects of local anesthetics on pulpal blood flow in dogs. *J Dent Res* 1984;63:650–2.
- [71] Odor TM, Pitt Ford TR, McDonald F. Adrenaline in local anaesthesia; the effect of concentration on dental pulpal circulation and anaesthesia. *Endodont Dent Traumatol* 1994;10:167–73.
- [72] Stevens A, Lowe J. Pathology. 2nd ed. London, UK: Mosby; 2000.
- [73] Kumar V, Abbas AK, Fausto N, Mitchell R. Robbins basic pathology. 8th ed. Saunders Philadelphia, PA, USA: Elsevier Health Science; 2007.
- [74] Kitamura C, Nishihara T, Ueno Y, Nagayoshi M, Kasugai S, Terashita M. Thermotolerance of pulp cells and phagocytosis of apoptotic pulp cells by surviving pulp cells following heat stress. *J Cell Biochem* 2005;94:826–34.
- [75] Ueno Y, Kitamura C, Terashita M, Nishihara T. Reoxygenation improves hypoxia induced pulp cell arrest. *J Dent Res* 2006;85:824–8.
- [76] Morotomi T, Kitamura C, Toyono T, Okinaga T, Washio A, Saito N, et al. Effects of heat stress and starvation on clonal odontoblast-like cells. *J Endod* 2011;37:955–61.
- [77] Morotomi T, Kitamura C, Minakami M, Itaya K, Ushio S, Fukuda Y, et al. Effect of heat stress on clonal odontoblast-like cells under starvation condition. *J Jpn Endod Assoc* 2012;33:105–12 (in Japanese).
- [78] Morotomi T, Kitamura C, Okinaga T, Nishihara T, Sakagami R, et al. Continuous fever-range heat stress induces thermotolerance in odontoblast-clone cells. *Arch of Oral Biol* 2014;59:741–8.
- [79] Lanneau D, de Thonel A, Maurel S, Didelot C, Garrido C. Apoptosis versus cell differentiation role of heat shock proteins HSP90, HSP70 and HSP27. *Prion* 2007;1:53–60.
- [80] Weinert TA, Hartwell LH. The RAD9 gene controls the cell cycle response to DNA damage in *Saccharomyces cerevisiae*. *Science* 1988;241:317–22.
- [81] Siede W, Friedberg AS, Friedberg EC. RAD9-dependent G1 arrest defines a second checkpoint for damaged DNA in the cell cycle of *Saccharomyces cerevisiae*. *Proc Natl Acad Sci U S A* 1983;90:7985–9.
- [82] Craig EA, Wissman JS, Horwich AL. Heat shock proteins and molecular chaperones: mediators of protein conformation and turnover in the cell. *Cell* 1994;78:365–72.
- [83] Hartl FU. Molecular chaperone in cellular protein folding. *Nature* 1996;381:571–9.
- [84] Arya R, Mallik M, Lakhota SC. Heat shock genes - integrating cell survival and death. *J Biosci* 2007;32:595–610.
- [85] Nakayama K, Hirata-Tsuchiya S, Okamoto K, Morotomi T, Jimi E, Kitamura C. The novel NF- $\kappa$ B inhibitor, MTI-II peptide anti-inflammatory drug, suppresses inflammatory responses in odontoblast-like cells. *J Cell Biochem* 2016;117:2552–8.
- [86] Okamoto K, Isohashi F. Purification and primary structure of a macromolecular-translocation inhibitor II of glucocorticoid-receptor

- binding to nuclei from rat liver. Inhibitor II is the 11.5-kDa Zn<sup>2+</sup>-binding protein (parathymosin). *Eur J Biochem* 2000;267:155–62.
- [87] Okamoto K, Isohashi F. Macromolecular translocation inhibitor II (Zn<sup>2+</sup>-binding protein, parathymosin) interacts with the glucocorticoid receptor and enhances transcription in vivo. *J Biol Chem* 2005;280:36986–93.
- [88] Okamoto K, Hirata-Tsuchiya S, Kitamura C, Omoteyama K, Sato T, Arito M, et al. A small nuclear acidic protein (MTI-II, Zn<sup>2+</sup> binding protein, parathymosin) that inhibits transcriptional activity of NF-κB and its potential application to anti-inflammatory drugs. *Endocrinology* 2016;157:4973–86.
- [89] Al-Dlaigan YH. Pulpotomy medicaments used in deciduous dentition: an update. *Pak J Med Sci* 2015;31:1399–404.
- [90] Leye Benoist F, Gaye Ndiaye F, Kane AW, Benoist HM, Farge P. Evaluation of mineral trioxide aggregate (MTA) versus calcium hydroxide cement (Dycal®) in the formation of a dentine bridge: a randomised controlled trial. *Int Dent J* 2012;62:33–9.
- [91] Langer R, Vacanti JP. Tissue engineering. *Science* 1993;260:920–6.
- [92] Discher DE, Mooney DJ, Zandstra PW. Growth factors, matrices, and forces combine and control stem cells. *Science* 2009;324:1673–7.
- [93] Madan AK, Kramer B. Immunolocalization of fibroblast growth factor-2 (FGF-2) in the developing root and supporting structures of the murine tooth. *J Mol Histol* 2005;36:171–8.
- [94] Tran-Kung L, Mathieu S, About I. Role of human pulp fibroblasts in angiogenesis. *J Dent Res* 2006;85:819–23.
- [95] Annabi B, Naud E, Lee YT, Eliopoulos N, Galipeau J. Vascular progenitors derived from murine bone marrow stromal cells are regulated by fibroblast growth factor and are avidly recruited by vascularizing tumors. *J Cell Biochem* 2004;91:1146–58.
- [96] Etscheid M, Beer N, Kress JA, Seitz R, Dodt J. Inhibition of bFGF/EGF-dependent endothelial cell proliferation by the hyaluronan-binding protease from human plasma. *Eur J Cell Biol* 2004;82:597–604.
- [97] Taylor KR, Rudisill JA, Gallo RL. Structural and sequence motifs in dermatan sulfate for promoting fibroblast growth factor-2 (FGF-2) and FGF-7 activity. *J Biol Chem* 2005;280:5300–6.
- [98] Tabata Y, Ikada Y. Vascularization effect of basic fibroblast growth factor released from gelatin hydrogels with different biodegradabilities. *Biomaterials* 1999;20:2169–75.
- [99] Tabata Y, Miyano M, Inamoto T, Ishii T, Hirano Y, Yamaoiki Y, et al. De novo formation of adipose tissue by controlled release of basic fibroblast growth factor. *Tissue Eng* 2000;6:279–89.
- [100] Tabata Y, Nagano A, Ikada Y. Biodegradation of hydrogel carrier incorporating fibroblast growth factor. *Tissue Eng* 1999;5:127–38.
- [101] Yamamoto M, Ikada Y, Tabata Y. Controlled release of growth factors based on biodegradation of gelatin hydrogel. *J Biomater Sci Polym Ed* 2001;12:77–88.
- [102] Marui A, Tabata Y, Kojima S, Yamamoto M, Tambara K, Nishina T, et al. A novel approach to therapeutic angiogenesis for patients with critical limb ischemia by sustained release of basic fibroblast growth factor using biodegradable gelatin hydrogel: an initial report of the phase I-IIa study. *Circ J* 2007;71:1181–6.
- [103] Kawaguchi H, Nakamura K, Tabata Y, Ikada Y, Aoyama I, Anzai J, et al. Acceleration of fracture healing in nonhuman primates by fibroblast growth factor-2. *J Clin Endocrinol Metab* 2001;86:875–80.
- [104] Tabata Y, Yamada K, Hong L, Miyamoto S, Hashimoto N, Ikada Y. Skull bone regeneration in primates in response to basic fibroblast growth factor. *J Neurosurg* 1999;91:851–6.
- [105] Hayashi K, Kubo T, Doi K, Tabata Y, Akagawa Y. Development of new drug delivery system for implant bone augmentation using a basic fibroblast growth factor-gelatin hydrogel complex. *Dent Mater J* 2007;26:170–7.
- [106] Nakahara T, Nakamura T, Kobayashi E, Inoue M, Shigeno K, Tabata Y, et al. Novel approach to regeneration of periodontal tissues based on in situ tissue engineering: effects of controlled release of basic fibroblast growth factor from a sandwich membrane. *Tissue Eng* 2003;9:153–62.
- [107] Nakayama J, Fujioka H, Nagura I, Kokubu T, Makino T, Kuroda R, et al. The effect of fibroblast growth factor-2 on autologous osteochondral transplantation. *Int Orthop* 2009;33:275–80.
- [108] Kimura Y, Hokugo A, Takamoto T, Tabata Y, Kurosawa H. Regeneration of anterior cruciate ligament by biodegradable scaffold combined with local controlled release of basic fibroblast growth factor and collagen wrapping. *Tissue Eng Part C Methods* 2008;14:47–57.
- [109] Yasuda Y, Koyama H, Tabata Y, Fujihara Y, Oba M, Uchinuma E, et al. Controlled delivery of bFGF remodeled vascular network in muscle flap and increased perfusion capacity via minor pedicle. *J Surg Res* 2008;147:132–7.
- [110] Gong T, Heng BC, Lo EC, Zhang C. Current advance and future prospects of tissue engineering approach to dentin/pulp regenerative therapy. *Stem Cells Int* 2016;2016, <http://dx.doi.org/10.1155/2016/9204574>. Article ID 9204574, 13 pages.
- [111] Kikuchi N, Kitamura C, Morotomi T, Inuyama Y, Ishimatsu H, Tabata Y, et al. Formation of dentin-like particles in dentin defects above exposed pulp by controlled release of fibroblast growth factor 2 from gelatin hydrogels. *J Endod* 2007;33:1198–202.
- [112] Ishimatsu H, Kitamura C, Morotomi T, Tabata Y, Nishihara T, Chen KK, et al. Formation of dentinal bridge on surface of regenerated dental pulp in dentin defects by controlled release of fibroblast growth factor-2 from gelatin hydrogels. *J Endod* 2009;35:858–65.
- [113] Nakashima M. Induction of dentine in amputated pulp of dogs by recombinant human bone morphogenetic proteins-2 and -4 with collagen matrix. *Arch Oral Biol* 1994;39:1085–9.
- [114] Yeom K, Ariyoshi W, Okinaga T, Washio A, Morotomi T, Kitamura C, et al. Platelet-rich plasma enhances the differentiation of dental pulp progenitor cells into odontoblasts. *Int Endod J* 2016;49:271–8.
- [115] Mooney DJ, Powell C, Piana J, Rutherford B. Engineering dental pulp-like tissue in vitro. *Biotechnol Prog* 1996;12:865–8.
- [116] Buurma B, Gu K, Rutherford RB. Transplantation of human pulpal and gingival fibroblasts attached to synthetic scaffolds. *Eur J Oral Sci* 1999;107:282–9.
- [117] Sheridan MH, Shea LD, Peters MC, Mooney DJ. Bioabsorbable polymer scaffolds for tissue engineering capable of sustained growth factor delivery. *J Control Release* 2000;64:91–102.
- [118] Shimizu M, Yasuda T, Nakagawa T, Yamashita E, Julovi SM, Hiramitsu T, et al. Hyaluronan inhibits matrix metalloproteinase-1 production by proinflammatory cytokines. *J Rheumatol* 2003;30:1164–72.
- [119] Julovi SM, Ito H, Hiramitsu T, Yasuda T, Nakamura T. Hyaluronan inhibits IL-1β-stimulated collagenase production via down-regulation of phosphorylated p38 in SW-1353 human chondrosarcoma cells. *Mod Rheumatol* 2008;18:263–70.
- [120] Angele P, Kujat R, Nerlich M, Yoo J, Goldberg V, Johnstone B. Engineering of osteochondral tissue with bone marrow mesenchymal progenitor cells in a derivatized hyaluronan-gelatin composite sponge. *Tissue Eng* 1999;5:545–54.
- [121] Ramamurthi A, Vesely I. Smooth muscle cell adhesion on crosslinked hyaluronan gels. *J Biomed Mater Res* 2002;60:195–205.
- [122] Kim HD, Valentini RF. Retention and activity of BMP-2 in hyaluronan acid-based scaffolds in vitro. *J Biomed Mater Res* 2002;59:573–84.
- [123] Liu Y, Shu XZ, Gray SD, Prestwich GD. Disulfide-crosslinked hyaluronan-gelatin sponge: growth of fibrous tissue in vivo. *J Biomed Mater Res A* 2004;68:142–9.
- [124] Peattie RA, Nayate AP, Firpo MA, Shelby J, Fisher RJ, Prestwich GD. Stimulation of in vivo angiogenesis by cytokine-loaded hyaluronic acid hydrogel implants. *Biomaterials* 2004;25:2789–98.
- [125] Inuyama Y, Kitamura C, Nishihara T, Morotomi T, Nagayoshi M, Tabata Y, et al. Effects of hyaluronic acid sponge as a scaffold on odontoblastic cell line and amputated dental pulp. *J Biomed Mater Res B Appl Biomater* 2010;92:120–8.
- [126] Morotomi T, Tabata Y, Kitamura C. Dentin-pulp complex regeneration therapy following pulp amputation. *Adv Tech Biol Med* 2015;3:153, <http://dx.doi.org/10.4172/2379-1764.1000153>.
- [127] Banchs F, Trope M. Revascularization of immature permanent teeth with apical periodontitis: new treatment protocol? *J Endod* 2004;30:196–200.
- [128] Wang X, Thibodeau B, Trope M, Lin LM, Huang GT. Histologic characterization of regenerated tissues in canal space after the revitalization/revascularization procedure of immature dog teeth with apical periodontitis. *J Endod* 2010;36:56–63.
- [129] Kim SG, Zheng Y, Zhou J, Chen M, Embree MC, Song K, et al. Dentin and dental pulp regeneration by the patient's endogenous cells. *Endod Topics* 2013;28:106–17.
- [130] Gronthos S, Mankani M, Brahimi J, Robey PG, Shi S. Postnatal human dental pulp stem cells (DPSCs) in vitro and in vivo. *Proc Natl Acad Sci U S A* 2000;97:13625–30.
- [131] Batouli S, Miura M, Brahimi J, Tsutsui TW, Fisher LW, Gronthos S, et al. Comparison of stem-cell-mediated osteogenesis and dentinogenesis. *J Dent Res* 2003;82:976–81.
- [132] Gronthos S, Brahimi J, Li W, Fisher LW, Cherman N, Boyde A, et al. Stem cell properties of human dental pulp stem cells. *J Dent Res* 2002;81:531–5.
- [133] Nakashima M, Iohara K, Murakami M, Nakamura H, Sato Y, Arijii Y, et al. Pulp regeneration by transplantation of dental pulp stem cells in pulpitis: a pilot clinical study. *Stem Cell Res Ther* 2017;8:61.
- [134] Miura M, Gronthos S, Zhao M, Lu B, Fisher LW, Robey PG, et al. SHED: stem cells from human exfoliated deciduous teeth. *Proc Natl Acad Sci U S A* 2003;100:5807–12.
- [135] Seo BM, Miura M, Gronthos S, Bartold PM, Batouli S, Brahimi J, et al. Investigation of multipotent postnatal stem cells from human periodontal ligament. *Lancet* 2004;364:149–55.
- [136] Sonoyama W, Liu Y, Yamaza T, Tuan RS, Wang S, Shi S, et al. Characterization of the apical papilla and its residing stem cells from human immature permanent teeth: a pilot study. *J Endod* 2008;34:166–71.
- [137] Morszczek C, Götz W, Schierholz J, Zeilhofer F, Kühn U, Möhl C, et al. Isolation of precursor cells (PCs) from human dental follicle of wisdom teeth. *Matrix Biol* 2005;24:155–65.
- [138] Alongi DJ, Yamaza T, Song Y, Fouad AF, Romberg EE, Shi S, et al. Stem/progenitor cells from inflamed human dental pulp retain tissue regeneration potential. *Regen Med* 2010;5:617–31.
- [139] Ravindran S, Huang CC, George A. Extracellular matrix of dental pulp stem cells: applications in pulp tissue engineering using somatic MSCs. *Front Physiol* 2014;4:395.
- [140] Ishizaka R, Iohara K, Murakami M, Fukuta O, Nakashima M. Regeneration of dental pulp following pulpctomy by fractionated stem/progenitor cells from bone marrow and adipose tissue. *Biomaterials* 2012;33:2109–18.
- [141] Otsu K, Kishigami R, Oikawa-Sasaki A, Fukumoto S, Yamada A, Fujiwara N, et al. Differentiation of induced pluripotent stem cells into dental mesenchymal cells. *Stem Cells Dev* 2012;21:1156–64.
- [142] Wen Y, Wang F, Zhang W, Li Y, Yu M, Nan X, et al. Application of induced pluripotent stem cells in generation of a tissue-engineered tooth-like structure. *Tissue Eng Part A* 2012;18:1677–85.