

RESEARCH

Open Access



# Fasting blood glucose-to-glycated hemoglobin ratio and all-cause mortality among Chinese in-hospital patients with acute stroke: a 12-month follow-up study

Zhong-ming Cai<sup>1</sup>, Man-man Zhang<sup>2</sup>, Ren-qian Feng<sup>1</sup>, Xu-dong Zhou<sup>3</sup>, Hao-man Chen<sup>1</sup>, Zhi-peng Liu<sup>1</sup>, Yan-zhi Wu<sup>1</sup>, Qun-li Lin<sup>4</sup>, Sheng-lie Ye<sup>1</sup>, Cheng-wei Liao<sup>1</sup>, Xue-rong Huang<sup>5</sup>, Le-qiu Sun<sup>6</sup>, Bo Yang<sup>7\*</sup> and Bei-lei Zhu<sup>2\*</sup>

## Abstract

**Background:** Stroke is a leading cause of death and functional impairment in older people. To assess the prospective association between fasting blood glucose-to-glycated hemoglobin ratio and all-cause mortality and poor prognosis in stroke patients.

**Methods:** A total of 971 Chinese inpatients with acute stroke (mean age of 65.7) were consecutively enrolled in the prospective clinical study and followed up for 12 months after discharge. Stress hyperglycemia was measured using the ratio of fasting blood glucose (FBG, mmol/L)/glycated hemoglobin (HbA1c, %). The primary outcome was all-cause mortality, and secondary outcomes were poor prognosis defined as infectious complications, a National Institutes of Health Stroke Scale (NIHSS) score  $\geq 6$ , a Barthel Index score  $\leq 60$ , or a modified Rankin Scale (mRS) score of 3–6, presented as multivariate-adjusted odds ratios (ORs) with 95% confidence intervals (CIs) across the quartiles of the FBG/HbA1c ratio.

**Results:** There were 35 (4.1%) all-cause deaths at 3 months and 85 (11.4%) at 12 months. The inpatients with the highest quartile of the FBG/HbA1c ratio had a higher risk of all-cause death at 3 months (adjusted OR: 5.16, 95% CI: 1.03–25.74) and at 12 months (adjusted OR: 2.59, 95% CI: 1.14–5.89) and a higher risk of infectious complications (adjusted OR 2.37, 95% CI 1.27–4.43) and dysfunction (adjusted OR 1.79, 95% CI 1.06–3.01) during hospitalization than inpatients with the lowest quartile.

**Conclusions:** Stress hyperglycemia, measured by the FBG/HbA1c ratio, was associated with an increased risk of adverse outcomes, including all-cause death, infectious complications, and dysfunction after stroke.

**Keywords:** Acute stroke, All-cause mortality, Stress hyperglycemia, Fasting blood glucose, Glycated hemoglobin

## Background

Stress hyperglycemia, a relatively transient increase in blood glucose levels secondary to neurohormonal derangements and inflammation [1], is associated with increased morbidity and mortality in in-patients hospitalized for myocardial infarction [2], congestive cardiac failure [3], and other critical illnesses [4].

\*Correspondence: ybzju@zju.edu.cn; doczbl@163.com

<sup>2</sup> Department of Neurology, The First Affiliated Hospital of Wenzhou Medical University, Wenzhou, PR China

<sup>7</sup> School of Public Health and Management, Wenzhou Medical University, Wenzhou, Zhejiang, PR China

Full list of author information is available at the end of the article



Stress hyperglycemia may occur in a high proportion of patients with stroke [5]. During period of acute stroke, an increase in blood glucose levels was detected induced by the release of stress hormones after the stress stimulating the hypothalamus–pituitary–adrenal axis and the sympathetic nervous system [6]. Previous studies have shown that stress hyperglycemia appears to be a marker of an increased risk of short-term mortality and poor functional outcomes after stroke [6–8]. However, these studies were performed in selected patient populations, focusing on patients with acute ischemic stroke [6, 9] or further extending to the large vessel occlusion subtype [7]. Additionally, the prognosis was measured only during the hospital stay [9] or at three months after discharge [6, 7]. Furthermore, although specific guidelines for the definition of stress hyperglycemia have not been developed, most previous studies have been based on absolute, rather than relative increases in fasting or randomized blood glucose levels [8, 9].

Due to successful standardization, the glycated hemoglobin (HbA1c) concentration has been proposed to be a valuable diagnostic tool for monitoring long-term glycaemic control [10]. Additionally, transient changes in blood glucose levels generally do not affect HbA1c concentration [11]. Recent studies have shown that relative hyperglycemia, defined as the fasting blood glucose (FBG)/HbA1c ratio [12–14] or as admission glucose divided by the estimated average glucose level derived from HbA1c [15], might be a better predictor of outcomes of critical illness than absolute glucose indicators. Therefore, it can be hypothesized that the FBG-to-HbA1c ratio could reflect stress hyperglycemia considering the background glucose level prior to the stroke event [12–15].

Infectious complications, including pneumonia, urinary tract infection (UTI), gastrointestinal infection, infectious fever etc. are the third most common stroke complications [16], affecting a large number of stroke populations [17]. Infection has been shown to be an independent predictor of neurological functional deterioration [18] and stroke readmission rates [19], leading to a substantial economic burden upon stroke care [20]. Stress hyperglycemia results in impaired host defenses, increasing the risk for infection after stroke [21], which may contribute to adverse outcomes jointly in stroke patients.

We designed this study to prospectively explore the association between stress hyperglycemia, measured by the FBG/HbA1c ratio, and all-cause mortality and poor prognosis after acute stroke. Furthermore, we assessed whether infectious complications may play an important role in the pathway from stress hyperglycemia to mid- and long-term all-cause death.

## Methods

The patient data collection and assessment of outcomes were described as our previous studies [22, 23].

### Patients

Five major medical institutions in Wenzhou (the First Affiliated Hospital of Wenzhou Medical University, Yueqing People's Hospital, Ruian People's Hospital, Yongjia People's Hospital, and Pingyang People's Hospital) participated in this multicenter, prospective study. Patients who were admitted to the hospital within one week after the sudden onset of stroke between October 1 and December 31, 2018, were included in the data pool. Only patients with complete data on FBG and HbA1c upon admission were enrolled in this study. Stroke, including ischemic stroke and hemorrhagic stroke, was diagnosed according to the World Health Organization criteria [24] and confirmed by brain computed tomography or magnetic resonance imaging.

### Data collection

We collected data on patient demographics, medical history, neurological functional assessment, risk of malnutrition assessment and medical treatment during hospitalization. The baseline data were collected by the same professionally trained investigator within 48 h after admission. Whether the patient had a history of atrial fibrillation, coronary heart disease or stroke was determined on the basis of statements from the patient or their relatives and confirmed by a review of the patient's past medical history. Hypertension and diabetes were assessed according to the 2010 Chinese guidelines for the management of hypertension [25] and the 2018 American Diabetes Association Standards of Medical Care in Diabetes [26], respectively. Hyperlipemia was diagnosed when one of the following criteria was met: total cholesterol level  $\geq 6.2$  mmol/L, low-density lipoprotein cholesterol level  $\geq 4.1$  mmol/L, triglyceride level  $\geq 2.3$  mmol/L or high-density lipoprotein cholesterol level  $< 1.0$  mmol/L. The severity of stroke was assessed with the National Institutes of Health Stroke Scale (NIHSS) [27]. The Barthel index was used to assess the patient's level of independence in activities of daily living (ADL) [28]. According to the Nutritional Risk Screening 2002, which considers impaired nutritional status, the severity of the disease and age, a total score of  $\geq 3$  points indicates that the patient is at risk of malnutrition [29]. Nutrition support was defined as enteral nutrition or intravenous nutrition support during hospitalization.

### Assessment of stress hyperglycemia

Fasting venous blood samples were drawn within 48 h after admission during the morning hours after an

overnight fast to measure FBG and HbA1c. All measurements were performed by laboratory personnel blinded to the study samples, study group assignments, and outcomes.

Stress hyperglycemia was estimated with the FBG/HbA1c ratio. We used the following formula to calculate the FBG/HbA1c ratio:  $\text{FBG/HbA1c ratio} = \text{FBG (mmol/L)}/\text{HbA1c (\%)}$ . According to the quartiles of the FBG/HbA1c ratio, the patients were further categorized into four equal groups (Q1–Q4,  $Q1 \leq 0.81$ ,  $0.82 \leq Q2 < 0.91$ ,  $0.92 \leq Q3 < 1.06$ ,  $Q4 \geq 1.07$ ). The FBG/HbA1c ratio was used to quantify the extent of acute elevation of plasma glucose compared with the background plasma glucose levels.

### Outcome assessment

The outcomes were assessed at three time points after stroke: within 48 h after discharge (infectious complications, National Institutes of Health Stroke Scale, NIHSS score and dysfunction), at three months after discharge (all-cause death and functional outcomes) and at 12 months after discharge (all-cause death and functional outcomes). The primary outcome was all-cause mortality, and secondary outcomes were poor prognosis defined as infectious complications, a NIHSS score  $\geq 6$ , a Barthel Index score  $\leq 60$ , or a modified Rankin Scale (mRS) score of 3–6. Infectious complications were defined as pneumonia, UTI, gastrointestinal infection, sepsis, infective fever, and other infections during hospitalization. Dysfunction was defined as a Barthel Index value  $\leq 60$ . Functional outcomes were measured with the mRS score. Poor functional outcomes were defined as a mRS score of 3–6. We followed up with the patients by telephone at the end of 3 and 12 months after discharge. Patients who could not be contacted by telephone after discharge were considered to be lost to follow-up.

### Statistical analysis

Categorical variables are presented as frequencies and percentages, while continuous variables are presented as the mean with standard deviation (SD) or median with interquartile range (IQR) when data were not normally distributed. Outliers were detected using residual examination. Categorical variables were analyzed using the chi-square test or Fisher's exact test. Normally distributed continuous variables were analyzed using ANOVA. Continuous variables that were not normally distributed were analyzed with the Mann–Whitney U test and Kruskal–Wallis test.

The relationship between the quartiles of the FBG/HbA1c ratio and outcomes after stroke were evaluated

by multivariable logistic regression models with the lowest quartile as the reference. Collinearity was checked before establishing each regression models. The tolerance  $\geq 0.1$  and the variance inflation factor  $< 10$  were considered to be the absence of collinearity. The ratio of outcome events per independent variable were  $\geq 10$ . For the regression analyses with infectious complications as outcomes, we adjusted for the following factors: sex, age, NIHSS score, white blood cell count (WBC), type of stroke, diabetes, previous stroke, alcohol abuse, risk of malnutrition, length of hospital stay, and nutrition support. For the regression analyses with other in-hospital outcomes, we adjusted for sex, age, NIHSS score, type of stroke, atrial fibrillation, hypertension, diabetes, coronary heart disease, hyperlipemia, previous stroke, history of smoking, and history of alcohol consumption. For the regression analyses with mortality and functional outcomes at 3 and 12 months after discharge, we adjusted for sex, age, NIHSS score, type of stroke, atrial fibrillation, hypertension, diabetes, coronary heart disease, hyperlipemia, previous stroke, history of smoking, history of alcohol consumption, and infectious complications during hospitalization. We performed a sensitivity analysis restricted to patients without a history of diabetes, as previous studies have suggested that this group of patients has a worse outcome when presenting with hyperglycemia [30].

Infection during hospitalization was significantly associated with the short-term risk of recurrent stroke [31]. To assess infectious complications as an intermediate in the pathway from stress hyperglycemia to mid- and long-term all-cause death, we also adjusted for infectious complications (both as an individual variable and as an interaction variable with stress hyperglycemia quartiles) in the multivariate regression models with all-cause mortality at 3 and 12 months.

To investigate the association between stress hyperglycemia and all-cause mortality at 12 months after stroke in relation to each variable, we performed subgroup analyses of the following adjusted variables: sex, age ( $< 75$  or  $\geq 75$ ), NIHSS score ( $< 6$  or  $\geq 6$ ), diabetes, hypertension, infectious complications, and stroke type (ischemic or hemorrhagic).

The predictive ability of HbA1c, FBG and the FBG/HbA1c ratio with primary outcomes was assessed using the receiver–operating characteristics (ROC) curve analysis.

Data were analyzed by SPSS 22.0 software (SPSS, Inc., Chicago, IL) and MedCalc (MedCalc Inc, Ostend, Belgium), and a 2-sided  $P$  value  $< 0.05$  was considered to indicate statistical significance.

**Results**

Among 971 stroke patients, 13 missed the data of FBG, 17 missed the data of HbA1c, 846 were successfully followed up with 3 months after discharge, and 743 of these patients remained in contact at 12 months (Fig. 1). Therefore, we performed most analyses with 846 patients, and the 12-month analysis was restricted to 743 patients. Of the 846 stroke patients, 522 (61.7%) were male, and the mean age was  $65.7 \pm 12.6$  years. The mean and median FBG/HbA1c ratios were 0.98 (SD, 0.34) and 0.91 (IQR, 0.81–1.06), respectively. The median of admission NIHSS score was 3 (IQR, 1–7). (Table 1) shows the baseline characteristics of the patients by quartiles of the FBG/HbA1c ratio.

The characteristics of patients included and excluded were showed in Additional file 1.

**Stress hyperglycemia and primary outcomes**

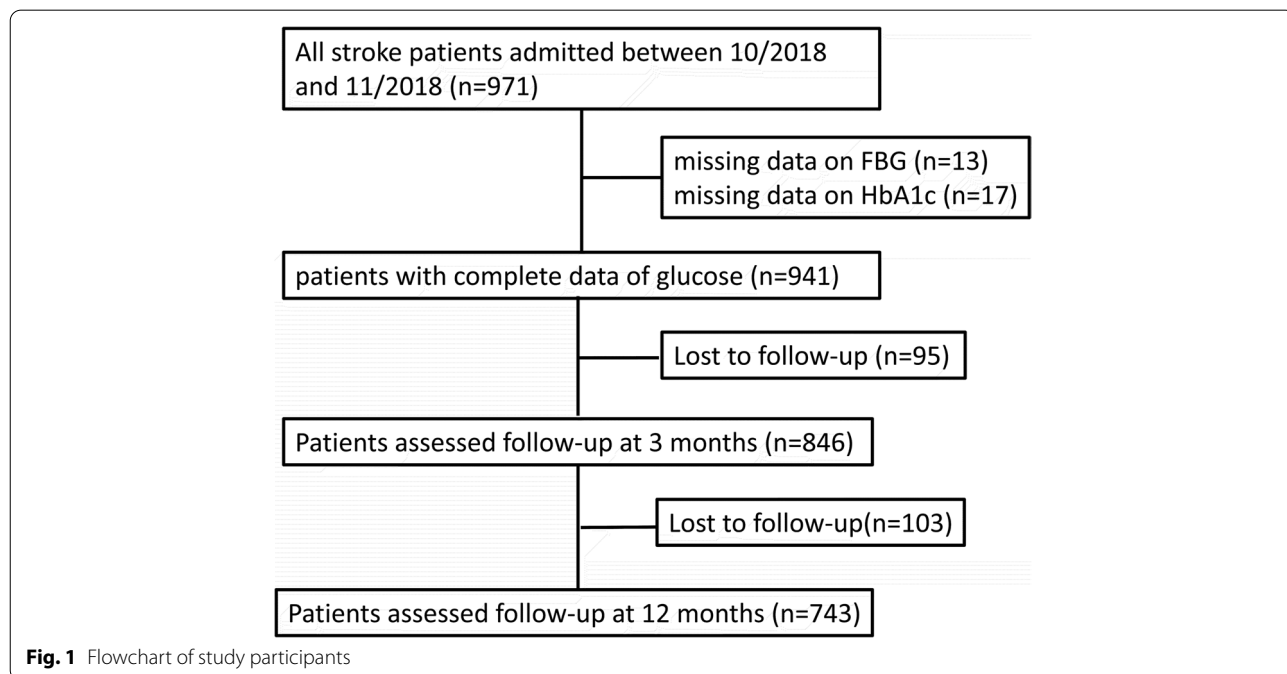
(Table 2) shows the 3- and 12-month all-cause mortality after stroke across quartiles of the FBG/HbA1c ratio. (Figure 2) shows the histograms and scatterplots of association between FBG/HbA1c ratio and all-cause deaths. There were 35 (4.1%) all-cause deaths at 3 months and 85 (11.4%) at 12 months. After adjustment for sex, age, NIHSS, atrial fibrillation, hypertension, diabetes, coronary heart disease, hyperlipemia, previous smoking, history of smoking, history of drinking, and infectious complications, multivariable regression showed that patients in the highest quartile of the FBG/HbA1c ratio had an elevated risk of all-cause death at 3 months

(adjusted OR: 5.16, 95% CI: 1.03–25.74) and at 12 months (adjusted OR: 2.59, 95% CI: 1.14–5.89).

**Stress hyperglycemia and secondary outcomes**

(Table 3) shows the outcomes during hospitalization across quartiles of the FBG/HbA1c ratio in the study patients. There were 140 (16.5%) infectious complications, including 102 (12.1%) instances of pneumonia and 22 (2.6%) UTIs. A total of 165 (19.5%) patients had NIHSS scores  $\geq 6$ , and 337 (39.8%) had dysfunction (Barthel index value  $\leq 60$ ) after discharge. Compared with patients in the lowest quartile, patients in the highest quartile of the FBG/HbA1c ratio had higher NIHSS scores ( $P < 0.001$ ). Compared with patients in the lowest quartile, patients in the highest quartile of the FBG/HbA1c ratio had a higher risk of infectious complications (adjusted OR 2.37, 95% CI 1.27–4.43) and dysfunction (adjusted OR 1.79, 95% CI 1.06–3.01) after adjusting for covariates. There was also a trend that patients in the highest quartile of the FBG/HbA1c ratio had a higher risk of pneumonia (adjusted OR 1.44, 95% CI 0.73–2.82) and UTI (adjusted OR 2.32, 95% CI 0.53–10.13) and a higher prevalence of NIHSS score  $\geq 6$  (adjusted OR 1.63, 95% CI 0.83–3.22) than patients in the lowest quartile.

(Table 4) shows the 3- and 12-month poor functional outcomes after stroke across quartiles of the FBG/HbA1c ratio. There were 204 (24.1%) poor outcomes at 3 months and 241 (32.9%) at 12 months. There was a trend that patients in the highest quartile of the FBG/HbA1c ratio had a higher risk of poor functional



**Fig. 1** Flowchart of study participants

**Table 1** Baseline characteristics

|   | FBG/HbA1c    |              |              |              | p Value |
|---|--------------|--------------|--------------|--------------|---------|
|   | Q1 (n = 214) | Q2 (n = 212) | Q3 (n = 210) | Q4 (n = 210) |         |
| Patient characteristics                     |              |              |              |              |         |
| Female sex, n (%)                           | 61 (28.5)    | 95 (44.8)    | 79 (37.6)    | 89 (42.4)    | 0.003   |
| Age, mean (SD), years                       | 66.3 (11.8)  | 66.1 (13.1)  | 64.8 (12.8)  | 65.5 (12.6)  | 0.624   |
| NIHSS, median (IQR)                         | 3 (1–5)      | 2 (1–5)      | 3 (1–6.5)    | 4 (1–9.5)    | < 0.001 |
| Barthel Index, median (IQR)                 | 75 (45–95)   | 75 (45–95)   | 60 (30–92.5) | 45 (20–75)   | < 0.001 |
| Risk of malnutrition, n (%)                 | 91 (42.7)    | 87 (41.0)    | 85 (40.5)    | 99 (47.5)    | 0.503   |
| Nutrition support, n (%)                    | 11 (5.1)     | 11 (5.2)     | 26 (12.4)    | 49 (23.3)    | < 0.001 |
| Alcohol abuse, n (%)                        | 34 (15.9)    | 25 (11.8)    | 30 (14.3)    | 24 (11.4)    | 0.482   |
| Length of hospital stay, median (IQR), days | 10 (8–13)    | 9 (7–13)     | 10 (7–14)    | 12 (8–17)    | < 0.001 |
| Type of stroke, n (%)                       |              |              |              |              | < 0.001 |
| Ischemic                                    | 162 (75.7)   | 155 (73.1)   | 134 (63.8)   | 113 (53.8)   |         |
| Hemorrhagic                                 | 52 (24.3)    | 57 (26.9)    | 76 (36.2)    | 97 (46.2)    |         |
| Cardiovascular risk factors, n (%)          |              |              |              |              |         |
| Atrial fibrillation                         | 18 (8.4)     | 12 (5.7)     | 11 (5.2)     | 21 (10.0)    | 0.187   |
| Hypertension                                | 151 (70.6)   | 143 (67.5)   | 159 (75.7)   | 160 (76.2)   | 0.131   |
| Diabetes mellitus                           | 65 (30.4)    | 42 (19.8)    | 65 (31.0)    | 97 (46.2)    | < 0.001 |
| Coronary heart disease                      | 14 (6.5)     | 6 (2.8)      | 8 (3.8)      | 9 (4.3)      | 0.286   |
| Hyperlipemia                                | 89 (41.6)    | 111 (52.4)   | 105 (50.0)   | 109 (51.9)   | 0.092   |
| Previous stroke                             | 58 (27.1)    | 39 (18.4)    | 38 (18.1)    | 33 (15.7)    | 0.018   |
| History of smoking                          | 75 (35.0)    | 57 (26.9)    | 61 (29.0)    | 55 (26.2)    | 0.172   |
| History of drinking                         | 72 (33.6)    | 55 (25.9)    | 61 (29.0)    | 56 (26.7)    | 0.289   |
| Laboratory indicators                       |              |              |              |              |         |
| FBG, mean (SD), mmol/L                      | 4.88 (1.1)   | 5.34 (1.0)   | 6.28 (1.3)   | 9.37 (4.0)   | < 0.001 |
| HbA1C, mean (SD), %                         | 6.75 (1.7)   | 6.18 (1.1)   | 6.41 (1.3)   | 6.99 (2.0)   | < 0.001 |
| FBG/HbA1C, mean (SD)                        | 0.73 (0.09)  | 0.86 (0.02)  | 0.98 (0.04)  | 1.34 (0.49)  | < 0.001 |
| WBC, mean (SD), 10 <sup>9</sup> /L          | 6.95 (1.91)  | 6.70 (1.99)  | 7.40 (2.32)  | 8.18 (3.12)  | < 0.001 |

Quartiles of FBG/HbA1c ratio, Q1 ≤ 0.81, 0.82 ≤ Q2 < 0.91, 0.92 ≤ Q3 < 1.06, Q4 ≥ 1.07

FBG Fasting blood glucose, HbA1c Glycated hemoglobin, NIHSS The National Institutes of Health Stroke Scale, WBC White blood cell count

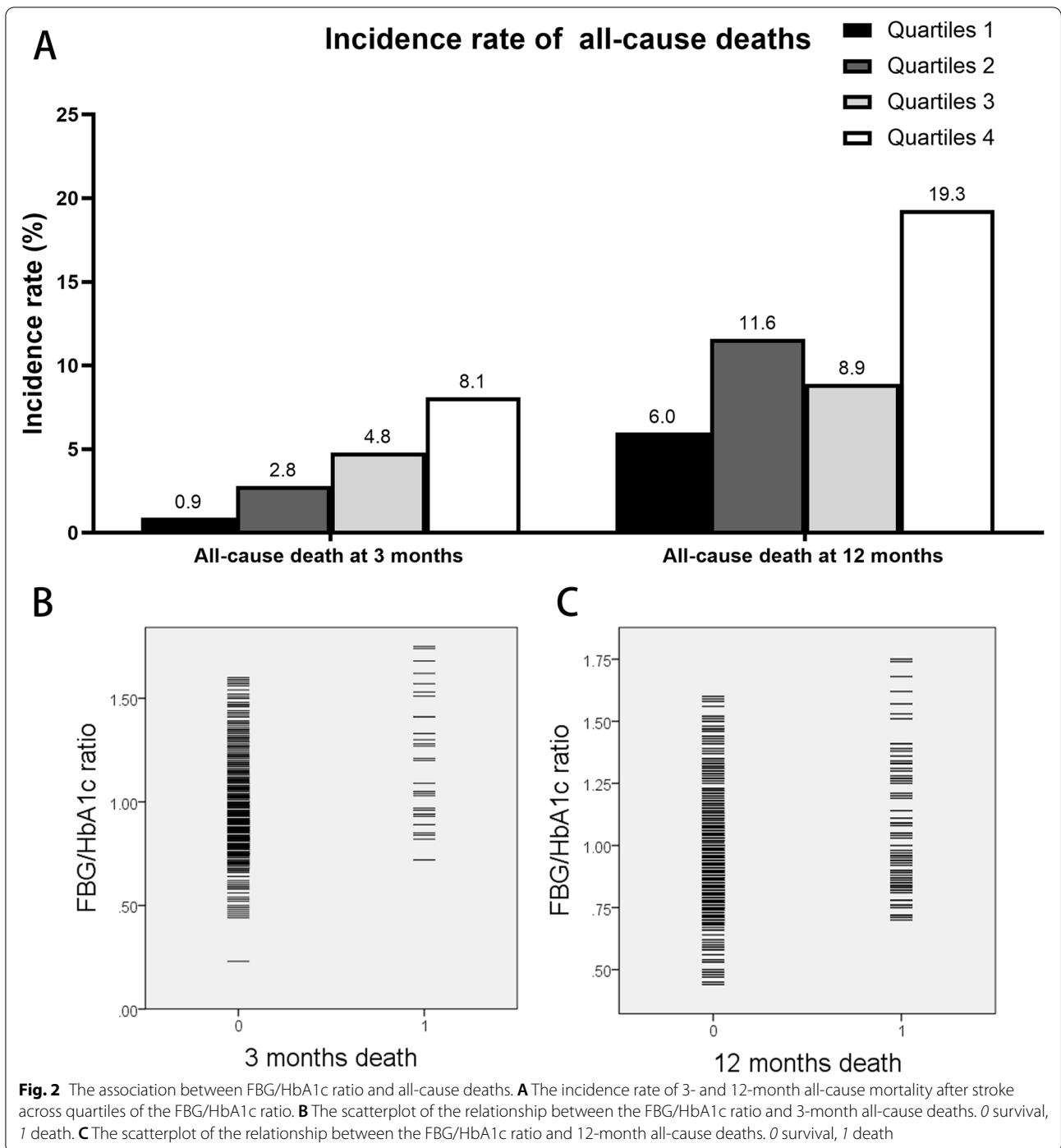
**Table 2** Logistic regression of all-cause death according to FBG/HbA1c quartiles

| Outcomes                     | FBG/HbA1c      | n   | Events, n (%) | Crude OR (95% CI) | p Value | Adjusted OR (95% CI) <sup>a</sup> | p Value |
|------------------------------|----------------|-----|---------------|-------------------|---------|-----------------------------------|---------|
| Primary Outcomes             |                |     |               |                   |         |                                   |         |
| All-cause death at 3 months  | Q1 (≤ 0.81)    | 214 | 2 (0.9)       | Ref               |         | Ref                               |         |
|                              | Q2 (0.82–0.91) | 212 | 6 (2.8)       | 3.09 (0.62–15.48) | 0.170   | 2.86 (0.54–15.24)                 | 0.218   |
|                              | Q3 (0.92–1.06) | 210 | 10 (4.8)      | 5.30 (1.15–24.49) | 0.033   | 3.95 (0.81–19.35)                 | 0.090   |
|                              | Q4 (≥ 1.07)    | 210 | 17 (8.1)      | 9.34 (2.13–40.94) | 0.003   | 5.16 (1.03–25.74)                 | 0.045   |
| All-cause death at 12 months | Q1 (≤ 0.81)    | 183 | 11 (6.0)      | Ref               |         | Ref                               |         |
|                              | Q2 (0.82–0.91) | 189 | 22 (11.6)     | 2.06 (0.97–4.38)  | 0.060   | 2.47 (1.09–5.59)                  | 0.030   |
|                              | Q3 (0.92–1.06) | 190 | 17 (8.9)      | 1.54 (0.70–3.38)  | 0.285   | 1.31 (0.56–3.07)                  | 0.534   |
|                              | Q4 (≥ 1.07)    | 181 | 35 (19.3)     | 3.78 (1.84–7.64)  | < 0.001 | 2.59 (1.14–5.89)                  | 0.024   |

Quartiles of FBG/HbA1c ratio, Q1 ≤ 0.81, 0.82 ≤ Q2 < 0.91, 0.92 ≤ Q3 < 1.06, Q4 ≥ 1.07

FBG Fasting blood glucose, HbA1c Glycated hemoglobin

<sup>a</sup> Logistic regression is adjusted for sex, age, NIHSS, type of stroke, atrial fibrillation, hypertension, diabetes, coronary heart disease, hyperlipemia, previous stroke, history of smoking, history of drinking, and infectious complications



outcomes at 3 months (adjusted OR 1.33, 95% CI 0.75–2.36) and 12 months (adjusted OR 1.68, 95% CI 0.97–2.90).

The sensitivity analyses excluding patients with pre-existing diabetes yielded similar results (Additional file 2).

**The role of infectious complications in the pathway from admission stress hyperglycemia to death**

To assess the role of infectious complications in the pathway from stress hyperglycemia to mid- and long-term all-cause death, we also added infectious complications as an interaction variable with stress hyperglycemia

**Table 3** Logistic regression of outcomes during hospitalization according to FBG/HbA1c quartiles

| Outcomes  | FBG/HbA1c          | n   | Events, n (%) | Crude OR (95% CI) | p Value | Adjusted OR (95% CI) | p Value |
|---|--------------------|-----|---------------|-------------------|---------|----------------------|---------|
| Secondary outcomes: during hospitalization                  |                    |     |               |                   |         |                      |         |
| Infectious complications <sup>a</sup>                       | Q1 ( $\leq 0.81$ ) | 214 | 21 (9.8)      | Ref               |         | Ref                  |         |
|   | Q2 (0.82–0.91)     | 212 | 23 (10.8)     | 1.12 (0.60–2.09)  | 0.725   | 1.13 (0.56–2.24)     | 0.738   |
|   | Q3 (0.92–1.06)     | 210 | 29 (13.8)     | 1.47 (0.81–2.68)  | 0.204   | 1.14 (0.58–2.23)     | 0.706   |
|   | Q4 ( $\geq 1.07$ ) | 210 | 67 (31.9)     | 4.31 (2.52–7.36)  | < 0.001 | 2.37 (1.27–4.43)     | 0.007   |
| Pneumonia <sup>a</sup>                                      | Q1 ( $\leq 0.81$ ) | 214 | 19 (8.9)      | Ref               |         | Ref                  |         |
|   | Q2 (0.82–0.91)     | 212 | 14 (6.6)      | 0.73 (0.35–1.49)  | 0.381   | 0.70 (0.30–1.47)     | 0.669   |
|   | Q3 (0.92–1.06)     | 210 | 21 (10.0)     | 1.14 (0.59–2.29)  | 0.693   | 0.82 (0.39–1.70)     | 0.818   |
|   | Q4 ( $\geq 1.07$ ) | 210 | 48 (22.9)     | 3.04 (1.72–5.38)  | < 0.001 | 1.44 (0.73–2.82)     | 0.573   |
| Urinary tract infection <sup>a</sup>                        | Q1 ( $\leq 0.81$ ) | 214 | 3 (1.4)       | Ref               |         | Ref                  |         |
|   | Q2 (0.82–0.91)     | 212 | 6 (2.8)       | 2.05 (0.51–8.30)  | 0.315   | 1.67 (0.39–7.14)     | 0.488   |
|   | Q3 (0.92–1.06)     | 210 | 5 (2.4)       | 1.72 (0.41–7.27)  | 0.464   | 1.71 (0.38–7.63)     | 0.458   |
|   | Q4 ( $\geq 1.07$ ) | 210 | 8 (3.8)       | 2.78 (0.73–10.65) | 0.134   | 2.32 (0.53–10.13)    | 0.265   |
| NIHSS $\geq 6$ post discharge <sup>b</sup>                  | Q1 ( $\leq 0.81$ ) | 214 | 29 (14.1)     | Ref               |         | Ref                  |         |
|   | Q2 (0.82–0.91)     | 212 | 30 (14.7)     | 1.05 (0.61–1.83)  | 0.856   | 1.22 (0.60–2.49)     | 0.585   |
|   | Q3 (0.92–1.06)     | 210 | 39 (19.4)     | 1.47 (0.87–2.49)  | 0.151   | 0.81 (0.40–1.62)     | 0.546   |
|   | Q4 ( $\geq 1.07$ ) | 210 | 67 (34.0)     | 3.15 (1.93–5.14)  | < 0.001 | 1.63 (0.83–3.22)     | 0.156   |
| Dysfunction post discharge (Bathel $\leq 60$ ) <sup>b</sup> | Q1 ( $\leq 0.81$ ) | 214 | 81 (31.9)     | Ref               |         | Ref                  |         |
|   | Q2 (0.82–0.91)     | 212 | 88 (41.5)     | 1.11 (0.74–1.66)  | 0.630   | 1.06 (0.64–1.79)     | 0.818   |
|   | Q3 (0.92–1.06)     | 210 | 114 (51.3)    | 1.56 (1.04–2.32)  | 0.030   | 1.22 (0.74–20.3)     | 0.442   |
|   | Q4 ( $\geq 1.07$ ) | 210 | 139 (66.2)    | 2.72 (1.82–4.04)  | < 0.001 | 1.79 (1.06–3.01)     | 0.029   |

Quartiles of FBG/HbA1c ratio, Q1  $\leq 0.81$ , 0.82  $\leq$  Q2 < 0.91, 0.92  $\leq$  Q3 < 1.06, Q4  $\geq 1.07$

FBG Fasting blood glucose, HbA1c Glycated hemoglobin, NIHSS The National Institutes of Health Stroke Scale

<sup>a</sup> Adjusted for sex, age, NIHSS, WBC, type of stroke, diabetes, previous stroke, alcohol abuse, risk of malnutrition, length of hospital stay, and nutrition support

<sup>b</sup> Adjusted for sex, age, NIHSS, type of stroke, atrial fibrillation, hypertension, diabetes, coronary heart disease, hyperlipemia, previous stroke, history of smoking and history of drinking

**Table 4** Logistic regression of poor functional outcomes according to FBG/HbA1c quartiles

| Outcomes   | FBG/HbA1c          | n   | Events, n (%) | Crude OR (95% CI) | p Value | Adjusted OR (95% CI) <sup>a</sup> | p Value |
|--|--------------------|-----|---------------|-------------------|---------|-----------------------------------|---------|
| Secondary Outcomes: after discharge                |                    |     |               |                   |         |                                   |         |
| Poor functional outcomes (mRS of 3–6) at 3 months  | Q1 ( $\leq 0.81$ ) | 214 | 32 (16.4)     | Ref               |         | Ref                               |         |
|  | Q2 (0.82–0.91)     | 212 | 46 (21.7)     | 1.42 (0.87–2.31)  | 0.161   | 1.50 (0.85–2.65)                  | 0.159   |
|  | Q3 (0.92–1.06)     | 210 | 50 (23.8)     | 1.64 (1.02–2.65)  | 0.043   | 1.16 (0.66–2.05)                  | 0.601   |
|  | Q4 ( $\geq 1.07$ ) | 210 | 72 (34.3)     | 2.67 (1.68–4.23)  | < 0.001 | 1.33 (0.75–2.36)                  | 0.341   |
| Poor functional outcomes (mRS of 3–6) at 12 months | Q1 ( $\leq 0.81$ ) | 183 | 52 (28.4)     | Ref               |         | Ref                               |         |
|  | Q2 (0.82–0.91)     | 189 | 49 (25.9)     | 0.88 (0.56–1.39)  | 0.589   | 1.16 (0.68–1.99)                  | 0.582   |
|  | Q3 (0.92–1.06)     | 190 | 57 (30.0)     | 1.08 (0.69–1.69)  | 0.737   | 0.94 (0.55–1.59)                  | 0.803   |
|  | Q4 ( $\geq 1.07$ ) | 181 | 83 (45.9)     | 2.13 (1.38–3.29)  | 0.001   | 1.68 (0.97–2.90)                  | 0.062   |

Quartiles of FBG/HbA1c ratio, Q1  $\leq 0.81$ , 0.82  $\leq$  Q2 < 0.91, 0.92  $\leq$  Q3 < 1.06, Q4  $\geq 1.07$

FBG Fasting blood glucose, HbA1c Glycated hemoglobin

<sup>a</sup> Logistic regression is adjusted for sex, age, NIHSS, type of stroke, atrial fibrillation, hypertension, diabetes, coronary heart disease, hyperlipemia, previous stroke, history of smoking, history of drinking, and infectious complications

quartiles in the logistic regression model. Multivariable regression showed that adding infectious complications (both as individual variables and as an interaction variable with quartiles of FBG/HbA1c ratio) to the models did not modify the relationships of the highest quartile

of the FBG/HbA1c ratio with all-cause death at 3 months (adjusted OR 5.63, 95% CI 1.05–30.16) and at 12 months (adjusted OR 3.36, 95% CI 1.28–8.85). No statistical significance was found in the interaction of the FBG/HbA1c ratio with infectious complications in predicting all-cause



mortality at 3 and 12 months ( $P=0.516$  and  $P=0.369$ , respectively).

**Subgroup analysis**

In the subgroup analysis of all-cause mortality at 12 months, the highest quartile of the FBG/HbA1c ratio was associated with or showed a trend toward an association with infectious complications in all subgroups (Fig. 3). Compared with patients in the lowest quartile, patients in the highest quartile of the FBG/HbA1c ratio had a higher risk of infectious complications in the subgroups of NIHSS score <6 (adjusted OR 3.23, 95% CI 1.01–10.32), age  $\geq 75$  (adjusted OR 5.01, 95% CI 1.13–22.25), AIS subjects (adjusted OR 3.66, 95% CI 1.36–9.83), hypertensive subjects (adjusted OR 2.57, 95% CI 1.03–6.37), and noninfectious subjects (adjusted OR 3.45, 95% CI 1.29–9.21).

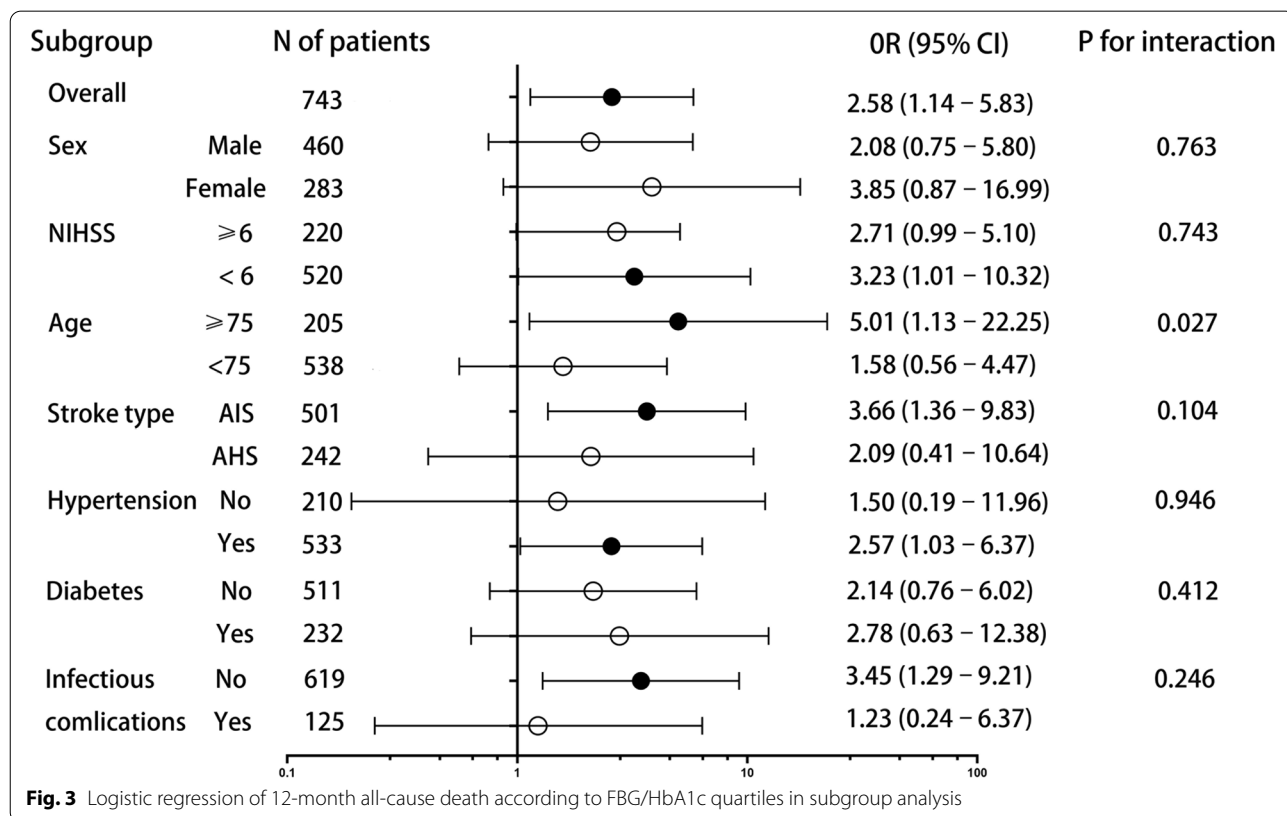
**Comparison of the predictive ability of HbA1c, FBG and the FBG/HbA1c ratio with primary outcomes**

At ROC analysis (Additional file 3, Fig. 4), based on Area Under the Curve, the FBG/HbA1c ratio was shown to be better than FBG in predicting 3 months mortality (0.704 vs. 0.616,  $P<0.001$ ). The predictive ability of the FBG/HbA1c ratio showed to be better than FBG (0.619 vs.

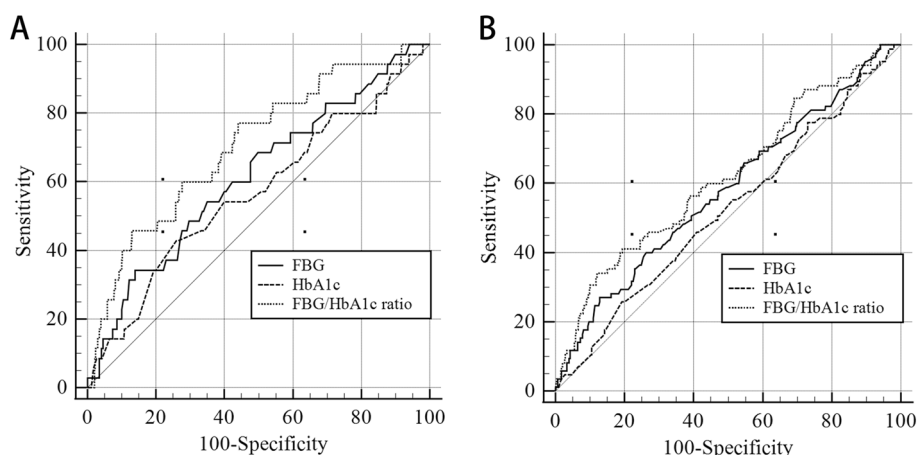
0.579,  $P=0.049$ ) and HbA1c (0.619 vs. 0.522,  $P=0.050$ ) in predicting 12 months mortality, respectively.

**Discussion**

In this multicenter, prospective study, we explored the association between stress hyperglycemia and all-cause mortality and poor prognosis in patients with acute stroke and found that the glucose/HbA1c ratio may independently predict mid- and long-term all-cause mortality (adjusted OR: 2.59, 95% CI: 1.14–5.89), infectious complications (adjusted OR 2.37, 95% CI 1.27–4.43), and dysfunction (adjusted OR 1.79, 95% CI 1.06–3.01) in acute stroke patients. There are several types of markers of stress hyperglycemia. Absolute increasing in admission glucose level was found to be associated with in-hospital mortality after acute stroke in earlier studies [30, 32]. Recent studies have shown that relative hyperglycemia, defined as the glucose to HbA1c ratio [12–14] or as admission glucose divided by the estimated average glucose level derived from HbA1c [15], could work as an economical and practical indicator to precisely detect and quantify stress hyperglycemia. The present study also revealed that relative glucose levels were much better than absolute glucose indicators in predicting 3 months and 12 months mortality (Additional file 3 and Fig. 4). Besides glucose/HbA1c ratio, glucose/glycated albumin







**Fig. 4** ROC curve analysis for comparing FBG, HbA1c, and FBG/HbA1c ratio with 3- and 12- month all-cause mortality. **A** FBG, HbA1c, and FBG/HbA1c ratio with 3-month all-cause mortality. **B** FBG, HbA1c, and FBG/HbA1c ratio with 12-month all-cause mortality

ratio was shown to be associated with an increased risk of stroke in patients with a minor ischemic stroke or transient ischemic attack [6]. The advantage of HbA1c is that it has been proposed to be a valuable diagnostic tool for monitoring long-term glycemic control for about 2 to 4 months [10] while glycated albumin level reflects mean glycemia level over 2 to 4 weeks [33]. Besides, HbA1c appears to be rather affordable and routine compared with glycated albumin.

Our current study showed that patients in the highest quartile of the FBG/HbA1c ratio had an increased risk of all-cause death at 3 months (adjusted OR: 5.16, 95% CI: 1.03–25.74) and at 12 months (adjusted OR: 2.59, 95% CI: 1.14–5.89) after adjusting for confounders, including demographic variables, stroke severity and cardiovascular risk factors. These results demonstrated the independent role of stress hyperglycemia in predicting mid- and long-term all-cause death in acute stroke patients.

One of our secondary outcomes was poor functional outcomes defined as a mRS score of  $\geq 3$ . Our results revealed that there was a trend that patients in the highest quartile of the FBG/HbA1c ratio had a higher risk of poor functional outcomes at 3 months (adjusted OR 1.33, 95% CI 0.75–2.36) and 12 months (adjusted OR 1.68, 95% CI 0.97–2.90). Since poor functional outcomes measured by the mRS might be most relevant to clinicians and patients considering further rehabilitation [34], these results suggested that stress hyperglycemia measured by the FBG/HbA1c ratio might facilitate the identification of patients with acute stroke who require early intervention to promote functional recovery.

Since a history of diabetes has been shown to be an important potential covariate in the relationship between stress hyperglycemia, complications and poor prognosis

[35], sensitivity analyses excluding patients with pre-existing diabetes were performed and yielded results similar to those of the overall analysis. Among nondiabetic patients, compared with patients in the lowest quartile, patients in the highest quartile of the FBG/HbA1c ratio had a higher risk of poor functional outcomes at 3 months and 12 months, which was consistent with a previous study [35]. These results suggested that the relationship between stress hyperglycemia and long-term adverse outcomes exists regardless of the presence or absence of a history of diabetes.

Another important secondary outcome was infectious complications of hospitalization. Infection is regarded as the most frequent complication of stroke, affecting almost 30% of patients [17], and has been confirmed to be an independent risk factor for a high risk of stroke recurrence [31]. Special attention should be given to the relationship between stress hyperglycemia and the risk of infectious complications after stroke. We found that stress hyperglycemia was associated with an increased risk of infectious complications (adjusted OR 2.37, 95% CI 1.27–4.43), which was consistent with a previous study [36] and added evidence on the relationship between disorders of glucose metabolism and complications in stroke patients [37, 38]. The association between hyperglycemia and infections after stroke may be explained by the fact that high blood glucose levels aggravate the already immunocompromised state of stroke patients [39, 40].

Despite the clear associations we found between stress hyperglycemia and infectious complications, we did not find evidence that the association between admission hyperglycemia and mid- and long-term all-cause death is explained or mediated by the occurrence of infectious complications ( $P=0.516$  and  $P=0.369$ , respectively).

This might be explained by the relatively low incidence rate of infectious complications in our population (16.5% vs. 30% in a systematic review [17]). Overall, further designed studies should be performed to explore the role of infections in hyperglycemia and worse clinical outcomes.

In the subgroup analysis of 12-month all-cause death, compared with patients in the lowest quartile, patients in the highest quartile of the FBG/HbA1c ratio had a higher risk of all-cause death in the subgroups of NIHSS score < 6, age  $\geq$  75, hypertensive subjects, and noninfectious subjects, which demonstrated the importance of the enhanced detection of stress hyperglycemia in these populations. Since the subgroup analyses were conducted post hoc, these associations should be explored in future research.

There are several explanations for the association between stress hyperglycemia and poor prognoses of stroke. First, stress hyperglycemia may contribute to adverse outcomes in stroke patients through mechanisms such as induction of more endothelial apoptosis and greater endothelial dysfunction and oxidative stress responses [1]. Second, hyperglycemia may have direct neurotoxicity on the ischemic penumbra and cause more neurons to be injured<sup>3</sup>, which may facilitate the conversion of hypoperfused at-risk tissue into infarction and adversely affect stroke prognosis [41]. Finally, acute hyperglycemia increases brain lactate production, which may accelerate irreversible injury by enhancing glutamate release and altering intracellular calcium regulation [42, 43], thus resulting in poorer stroke outcomes.

Although clear associations of stress hyperglycemia with all-cause death were found in the present study, a recent observational study [9] and a clinical trial [44] have come to the opposite conclusion. An observational study showed that stress hyperglycemia measured by absolute fasting serum glucose levels was not directly associated with in-hospital mortality but was only a marker of stroke severity [9]. The conflicting data presented above, which highlight a controversial role for stress hyperglycemia on outcomes following stroke, may result from the discrepancy in the measurement time points (at the second day after admission) and the index for hyperglycemia (absolute but not relative increases in fasting glucose were assessed in this study). Moreover, the present study showed that after adjusting for the NIHSS score as one of the confounders in the multivariable model, the associations remained significant between stress hyperglycemia and an increased risk of all-cause death at 3 months and 12 months after stroke, respectively. The recent randomized Stroke Hyperglycemia Insulin Network Effort trial, which compared intensive glucose lowering with standard

treatment in patients with stroke, found no difference in the death and favorable mRS score at 3 months [44]. However, treatment with intravenous tissue plasminogen activator therapy in 63% of the patients may suggest a selection bias for patients in this study. Thus, further well-designed randomized clinical trials with larger samples should be performed to evaluate whether improving glycemic control in stroke patients could help to achieve better outcomes.

There are several strengths in our present study. The data presented in this study likely reflect daily clinical practice, as they come from consecutive patients at 5 major hospitals in the Wenzhou region in China who were treated for stroke without the exclusion of hemorrhagic stroke patients, unlike most previous studies [6, 7, 36]. In addition, the present study prospectively designed abundant prognostic indicators. The primary outcome was all-cause mortality, and the secondary outcomes were poor prognosis defined as infectious complications, NIHSS score  $\geq$  6, Barthel Index score  $\leq$  60, and mRS score  $\geq$  3. The inclusion of both short- and long-term follow-up information strengthened the reliability of our results. There are still some limitations. First, 95 patients were lost to follow-up at 3 months, and 103 were lost at 12 months after discharge, which may lead to selection bias. Second, recall bias and underdiagnosis might result in the misclassification of confounding factors. Besides, there were no data available on the time elapsed after the use of glucose-lowering medication or last meal, and on how well glucose levels were controlled during the follow-up period as well as the medicines for prevention of cardiovascular event recurrence. Therefore, we were unable to assess the dynamics of hyperglycemia after stroke, although studies have suggested that persistent hyperglycemia is associated with poor functional outcomes [45]. Moreover, the present study lacks information on baseline markers of infection relating to the analysis of in-hospital infections except for WBC count.

In conclusion, stress hyperglycemia on admission measured by the FBG/HbA1c ratio was associated with an increased risk of all-cause death after stroke. Our present study suggests that the glucose/HbA1c ratio may help identify patients at increased risk of adverse outcomes, including infectious complications, dysfunction, and all-cause death. Further prospective studies or randomized trials with large sample sizes are warranted to evaluate whether improving glycemic control in stroke patients could improve outcomes.

#### Abbreviations

FBG: Fasting blood glucose; HbA1c: Glycated hemoglobin; UTI: Urinary tract infection; NIHSS: The National Institutes of Health Stroke Scale; ADL: Activities of daily living; mRS: The modified Rankin Scale.

## Supplementary Information

The online version contains supplementary material available at <https://doi.org/10.1186/s12877-022-03203-3>.

**Additional file 1.** Baseline characteristics of patients included and excluded.

**Additional file 2.** Logistic regression of outcomes according to FBG/HbA1c quartiles in nondiabetic patients.

**Additional file 3.** Comparison of the predictive ability of HbA1c, FBG and the FBG/HbA1c ratio with mortality.

### Acknowledgements

Thank Dao-dao for technical support.

### Authors' contributions

ZC analyzed the data and was a major contributor in writing the manuscript. MZ, RF, XZ, HC, ZL, YW, QL, SY, CL, XH, and LS participated in data collection and analysis. BY and BZ designed the study and revised the manuscript. All authors read and approved the final manuscript.

### Funding

This work was supported by the project of the science committee in Wenzhou, China (Project number: Y20190561).

### Availability of data and materials

The datasets used and analysed during the current study are available from the corresponding author on reasonable request.

### Declarations

#### Ethics approval and consent to participate

This study protocol was approved by the Clinical Research Ethics Committee of the First Affiliated Hospital of Wenzhou Medical University, China. Written informed consent was obtained from each patient and their family. The study conformed to the principles of the Declaration of Helsinki.

#### Consent for publication

Not applicable.

#### Competing interests

The authors declare that they have no competing interests.

#### Author details

<sup>1</sup>Department of First Clinical Medical School, The First Affiliated Hospital of Wenzhou Medical University, Wenzhou, PR China. <sup>2</sup>Department of Neurology, The First Affiliated Hospital of Wenzhou Medical University, Wenzhou, PR China. <sup>3</sup>Department of Neurology, Pingyang People's Hospital, Wenzhou, Zhejiang, PR China. <sup>4</sup>Department of Neurology, Yongjia People's Hospital, Wenzhou, Zhejiang, PR China. <sup>5</sup>Department of Neurology, Ruian People's Hospital, Wenzhou, Zhejiang, PR China. <sup>6</sup>Department of Neurology, Wenzhou Medical University Affiliated Yueqing Hospital, Wenzhou, Zhejiang, PR China. <sup>7</sup>School of Public Health and Management, Wenzhou Medical University, Wenzhou, Zhejiang, PR China.

Received: 11 April 2022 Accepted: 10 June 2022

Published online: 20 June 2022

### References

- Dungan KM, Braithwaite SS, Preiser JC. Stress hyperglycaemia. *Lancet*. 2009;373(9677):1798–807.
- Capes SE, Hunt D, Malmberg K, et al. Stress hyperglycaemia and increased risk of death after myocardial infarction in patients with and without diabetes: a systematic overview. *Lancet*. 2000;355(9206):773–8.
- Itzhaki Ben Zadok O, Kornowski R, Goldenberg I, et al. Admission blood glucose and 10-year mortality among patients with or without pre-existing diabetes mellitus hospitalized with heart failure. *Cardiovasc Diabetol*. 2017;16(1):102.
- Krinsky JS. Association between hyperglycemia and increased hospital mortality in a heterogeneous population of critically ill patients. *Mayo Clin Proc*. 2003;78(12):1471–8.
- Melamed E. Reactive hyperglycaemia in patients with acute stroke. *J Neurol Sci*. 1976;29(2–4):267–75.
- Pan Y, Cai X, Jing J, et al. Stress Hyperglycemia and Prognosis of Minor Ischemic Stroke and Transient Ischemic Attack: The CHANCE Study (Clopidogrel in High-Risk Patients With Acute Nondisabling Cerebrovascular Events). *Stroke*. 2017;48(11):3006–11.
- Yazawa Y, Ohira T, Itabashi R, et al. Association of Admission Hyperglycemia with Clinical Outcomes in Japanese Patients with Acute Large Vessel Occlusion Stroke: A post hoc Analysis of the Recovery by Endovascular Salvage for Cerebral Ultra-Acute Embolism Japan Registry 2. *Cerebrovasc Dis (Basel, Switzerland)*. 2021;50(1):12–9.
- Xing L, Liu S, Tian Y, et al. C-R Relationship between Fasting Plasma Glucose and Unfavorable Outcomes in Patients of Ischemic Stroke without Diabetes. *J Stroke Cerebrovasc Dis*. 2019;28(5):1400–8.
- Tziomalos K, Dimitriou P, Bouziana SD, et al. Stress hyperglycemia and acute ischemic stroke in-hospital outcome. *Metabolism*. 2017;67:99–105.
- Weykamp C. HbA1c: a review of analytical and clinical aspects. *Ann Lab Med*. 2013;33(6):393–400.
- Chehregosha H, Khamseh ME, Malek M, et al. A View Beyond HbA1c: Role of Continuous Glucose Monitoring. *Diabetes Ther*. 2019;10(3):853–63.
- Su YW, Hsu CY, Guo YW, et al. Usefulness of the plasma glucose concentration-to-HbA(1c) ratio in predicting clinical outcomes during acute illness with extreme hyperglycaemia. *Diabetes Metab*. 2017;43(1):40–7.
- Zhu B, Pan Y, Jing J, et al. Stress Hyperglycemia and Outcome of Nondiabetic Patients After Acute Ischemic Stroke. *Front Neurol*. 2019;10:1003.
- Yuan C, Chen S, Ruan Y, et al. The Stress Hyperglycemia Ratio is Associated with Hemorrhagic Transformation in Patients with Acute Ischemic Stroke. *Clin Interv Aging*. 2021;16:431–42.
- Roberts GW, Quinn SJ, Valentine N, et al. Relative Hyperglycemia, a Marker of Critical Illness: Introducing the Stress Hyperglycemia Ratio. *J Clin Endocrinol Metab*. 2015;100(12):4490–7.
- Aslanyan S, Weir CJ, Diener HC, et al. Pneumonia and urinary tract infection after acute ischaemic stroke: a tertiary analysis of the GAIN International trial. *Eur J Neurol*. 2004;11(1):49–53.
- Westendorp WF, Nederkoorn PJ, Vermeij JD, et al. Post-stroke infection: a systematic review and meta-analysis. *BMC Neurol*. 2011;11:110.
- Boehme AK, Kumar AD, Dorsey AM, et al. Infections present on admission compared with hospital-acquired infections in acute ischemic stroke patients. *J Stroke Cerebrovasc Dis*. 2013;22(8):e582–9.
- Shah SV, Corrado C, Bergman D, et al. Impact of Poststroke Medical Complications on 30-Day Readmission Rate. *J Stroke Cerebrovasc Dis*. 2015;24(9):1969–77.
- Berger B, Gumbinger C, Steiner T, et al. Epidemiologic features, risk factors, and outcome of sepsis in stroke patients treated on a neurologic intensive care unit. *J Crit Care*. 2014;29(2):241–8.
- Butler SO, Btaiche IF, Alaniz C. Relationship between hyperglycemia and infection in critically ill patients. *Pharmacotherapy*. 2005;25(7):963–76.
- Zhang M, Ye S, Huang X, et al. Comparing the prognostic significance of nutritional screening tools and ESPEN-DCM on 3-month and 12-month outcomes in stroke patients. *Clin Nutr*. 2021;40(5):3346–53.
- Cai ZM, Wu YZ, Chen HM, et al. Being at risk of malnutrition predicts poor outcomes at 3 months in acute ischemic stroke patients. *Eur J Clin Nutr*. 2020;74(5):796–805.
- Stroke—1989. Recommendations on stroke prevention, diagnosis, and therapy. Report of the WHO Task Force on Stroke and other Cerebrovascular Disorders. *Stroke*. 1989;20(10):1407–31. <https://doi.org/10.1161/01.str.20.10.1407>.
- Liu LS. 2010 Chinese guidelines for the management of hypertension. *Zhonghua Xin Xue Guan Bing Za Zhi*. 2011;39(7):579–615.
- Chamberlain JJ, Johnson EL, Leal S, et al. Cardiovascular Disease and Risk Management: Review of the American Diabetes Association Standards of Medical Care in Diabetes 2018. *Ann Intern Med*. 2018;168(9):640–50.
- Kwah LK, Diong J. National Institutes of Health Stroke Scale (NIHSS). *J Physiother*. 2014;60(1):61.
- Shah S, Vanclay F, Cooper B. Improving the sensitivity of the Barthel Index for stroke rehabilitation. *J Clin Epidemiol*. 1989;42(8):703–9.

29. Kondrup J. Nutritional risk screening (NRS 2002): a new method based on an analysis of controlled clinical trials. *Clin Nutr.* 2003;22(3):321–36.
30. Capes SE, Hunt D, Malmberg K, et al. Stress hyperglycemia and prognosis of stroke in nondiabetic and diabetic patients: a systematic overview. *Stroke.* 2001;32(10):2426–32.
31. Xu J, Yalkun G, Wang M, et al. Impact of Infection on the Risk of Recurrent Stroke Among Patients With Acute Ischemic Stroke. *Stroke.* 2020;51(8):2395–403.
32. Ahmed N, Dávalos A, Eriksson N, et al. Association of admission blood glucose and outcome in patients treated with intravenous thrombolysis: results from the Safe Implementation of Treatments in Stroke International Stroke Thrombolysis Register (SITS-ISTR). *Arch Neurol.* 2010;67(9):1123–30.
33. Furusyo N, Koga T, Ai M, et al. Utility of glycated albumin for the diagnosis of diabetes mellitus in a Japanese population study: results from the Kyushu and Okinawa Population Study (KOPS). *Diabetologia.* 2011;54(12):3028–36.
34. Kasner SE. Clinical interpretation and use of stroke scales. *Lancet Neurol.* 2006;5(7):603–12.
35. Rinkel LA, Nguyen TTM, Guglielmi V, et al. High Admission Glucose Is Associated With Poor Outcome After Endovascular Treatment for Ischemic Stroke. *Stroke.* 2020;51(11):3215–23.
36. Zonneveld TP, Nederkoorn PJ, Westendorp WF, et al. Hyperglycemia predicts poststroke infections in acute ischemic stroke. *Neurology.* 2017;88(15):1415–21.
37. Matz K, Keresztes K, Tatschl C, et al. Disorders of glucose metabolism in acute stroke patients: an underrecognized problem. *Diabetes Care.* 2006;29(4):792–7.
38. McCowen KC, Malhotra A, Bistrrian BR. Stress-induced hyperglycemia. *Crit Care Clin.* 2001;17(1):107.
39. Turina M, Fry DE, Polk HC Jr. Acute hyperglycemia and the innate immune system: clinical, cellular, and molecular aspects. *Crit Care Med.* 2005;33(7):1624–33.
40. Perner A, Nielsen SE, Rask-Madsen J. High glucose impairs superoxide production from isolated blood neutrophils. *Intensive Care Med.* 2003;29(4):642–5.
41. Parsons MW, Barber PA, Desmond PM, et al. Acute hyperglycemia adversely affects stroke outcome: a magnetic resonance imaging and spectroscopy study. *Ann Neurol.* 2002;52(1):20–8.
42. Anderson RE, Tan WK, Martin HS, et al. Effects of glucose and PaO<sub>2</sub> modulation on cortical intracellular acidosis, NADH redox state, and infarction in the ischemic penumbra. *Stroke.* 1999;30(1):160–70.
43. Pulsinelli WA, Waldman S, Rawlinson D, et al. Moderate hyperglycemia augments ischemic brain damage: a neuropathologic study in the rat. *Neurology.* 1982;32(11):1239–46.
44. Johnston KC, Bruno A, Pauls Q, et al. Intensive vs Standard Treatment of Hyperglycemia and Functional Outcome in Patients With Acute Ischemic Stroke: The SHINE Randomized Clinical Trial. *JAMA.* 2019;322(4):326–35.
45. Mi D, Wang P, Yang B, et al. Correlation of hyperglycemia with mortality after acute ischemic stroke. *Ther Adv Neurol Disord.* 2018;11:1756285617731686.

## Publisher's Note

Springer Nature remains neutral with regard to jurisdictional claims in published maps and institutional affiliations.

Ready to submit your research? Choose BMC and benefit from:

- fast, convenient online submission
- thorough peer review by experienced researchers in your field
- rapid publication on acceptance
- support for research data, including large and complex data types
- gold Open Access which fosters wider collaboration and increased citations
- maximum visibility for your research: over 100M website views per year

At BMC, research is always in progress.

Learn more [biomedcentral.com/submissions](https://biomedcentral.com/submissions)

