

## Research Article

# Androgen Receptors Expression in Pituitary of Male Viscacha in relation to Growth and Reproductive Cycle

Verónica Palmira Filippa,<sup>1,2</sup> Gabriela Judith Rosales,<sup>1</sup>  
Albana Andrea Marina Cruceño,<sup>1</sup> and Fabian Heber Mohamed<sup>1</sup>

<sup>1</sup>*Histología, Facultad de Química, Bioquímica y Farmacia, Universidad Nacional de San Luis, Avenida Ejército de los Andes 950, Bloque I, Piso No. 1, 5700 San Luis, Argentina*

<sup>2</sup>*Consejo Nacional de Investigaciones Científicas y Técnicas (CONICET), 5700 San Luis, Argentina*

Correspondence should be addressed to Fabian Heber Mohamed; [fhmo@unsl.edu.ar](mailto:fhmo@unsl.edu.ar)

Received 26 November 2014; Revised 6 March 2015; Accepted 8 March 2015

Academic Editor: Małgorzata Kotula-Balak

Copyright © 2015 Verónica Palmira Filippa et al. This is an open access article distributed under the Creative Commons Attribution License, which permits unrestricted use, distribution, and reproduction in any medium, provided the original work is properly cited.

The aim of this work was to study the androgen receptors (AR) expression in pituitary pars distalis (PD) of male viscachas in relation to growth and reproductive cycle. AR were detected by immunocytochemistry and quantified by image analysis. Pituitary glands from fetus, immature, prepubertal, and adult viscachas during their reproductive cycle were used. In the fetal PD, the immunoreactivity (ir) was mainly cytoplasmic. In immature and prepubertal animals, AR-ir was cytoplasmic (ARc-ir) and nuclear (ARn-ir) in medial region. In adult animals, ARn-ir cells were numerous at caudal end. AR regionalization varied between the PD zones in relation to growth. In immature animals, the ARn-ir increased whereas the cytoplasmic expression decreased in relation to the fetal glands. The percentage of ARc-ir cells increased in prepubertal animals whereas the nuclear AR expression was predominant in adult viscachas. The AR expression changed in adults, showing minimum percentage in the gonadal regression period. The variation of nuclear AR expression was directly related with testosterone concentration. These results demonstrated variations in the immunostaining pattern, regionalization, and number of AR-ir cells throughout development, growth, and reproductive cycle, suggesting the involvement of AR in the regulation of the pituitary activity of male viscacha.

## 1. Introduction

Androgens are important steroidal hormones involved in the sexual development and reproduction of male mammals. They are essential during development and for the maintenance of secondary male characteristics, initiation and continuation of spermatogenesis, and gonadotropin regulation [1]. Testosterone and dihydrotestosterone bind to specific cytosolic receptors, the androgen receptors (AR), resulting in a conformational change in receptor protein, dimerization, nuclear translocation, association with cofactors, and interaction with specific regions of the genome [2] to initiate a cellular response [3]. The existence of the AR expression in the cytoplasm of pituitary cells has been described in other species [4, 5]. It has been demonstrated that there is an inverse relationship between the cytoplasmic and nuclear localization, and testosterone administration increases the nuclear expression of AR [6].

Several studies have demonstrated that the pituitary gland is an androgen target tissue and serves as a potential site of androgen feedback on hormone secretion [4, 6, 7]. The localization and function of AR have been studied in the pituitary gland in some mammalian species in relation to age or gender [8–10]. AR expression has been studied during the fetal development of the hypothalamus, hippocampus, and pituitary in monkeys [11, 12] and sheep [13]. Studies of the ontogeny of the AR expression in the developing pituitary gland have been performed in monkeys [14], chickens [15], mice [16], rats [17], and sheep [18], and it has been demonstrated that pituitary AR in mammals is conservative.

Some species use environmental cues, the most important being the photoperiod, to synchronize their endogenous cycles and to reproduce at the optimal time of the year [19]. The pituitary gland is under control of the hypothalamus and the gonadal hormones, which exert feedback effects on

the hypothalamic-pituitary-gonadal axis [20]. Variations in the androgen serum concentration and their receptors in different tissues are responsible for biological effects throughout the life cycle of adult animals. Testosterone plays a highly significant role in the transition from the reproductive activity phase to gonadal regression and gonadal recrudescence [21]. Seasonal variations in testosterone serum concentration are related to the reproductive status of male birds [22] and hamsters [23]. The central mechanisms responsible for the photoperiod negative effects upon the testosterone and the possible influence of day length on AR expression have been reported [24]. Tetel et al. [25] have indicated that day-length-induced fluctuations in AR expression may contribute to seasonal variations of testosterone.

Our experimental model, the viscacha (*Lagostomus maximus maximus*), is a hystricomorph rodent of seasonal reproductive patterns. The annual reproductive cycle of adult male animals has three periods: reproductive (summer and early autumn), gonadal regression (winter), and gonadal recovery (spring). Previous studies have demonstrated that the gonadal regression period is characterized by an increase of the secretory ability of the pineal gland [26] and maximum levels of melatonin in blood [27]. In pituitary PD the activity of LH- and FSH-cells was different during the annual reproductive cycle, demonstrating that these cells do not secrete in parallel, and melatonin acts differentially on the gonadotroph activity [28]. In addition, corticotrophs, somatotrophs, thyrotrophs, and lactotrophs vary throughout the reproductive cycle [29–32]. A reduction of the testicular weight and of the seminiferous tubule diameters, seminiferous epithelium with Sertoli cells, spermatogonia and a few primary spermatocytes, and hypotrophic Leydig cells was observed in winter [33, 34]. The testicular activity was slowly recovered during spring, reaching its maximum during summer and early autumn in the reproductive period. More recent results from adult male viscachas have demonstrated seasonal changes in the structures of seminal vesicles according to the AR expression and testosterone serum concentrations [35]. Cruceño et al. [36] reported that the epididymal sperm morphology underwent changes during the reproductive cycle, with the highest quantity of abnormal gametes during the gonadal regression period.

Earlier histological studies have described different pituitary PD zones, called ventral, medial, and dorsal regions and rostral and caudal ends. It has been demonstrated that pituitary cell types changed in relation to age and gonadal activity of viscachas [29, 30, 32]. Changes in the immunostaining for AR and LH- and FSH-cells have been recently reported in the pituitary of castrated adult male viscachas. The immunocolocalization study showed that cells expressing AR and FSH were more affected by the lack of gonadal androgens, suggesting that some gonadotroph subpopulations may exist with different regulatory mechanisms for hormonal synthesis, storage, and secretion [37].

The expression of AR in the pituitary of fetal, immature, and prepubertal viscachas has not been examined yet, and there is no data about the seasonal expression of AR in the pituitary gland of this rodent. Based on the above data and our previous knowledge about the viscacha, it

is reasonable to hypothesize that pituitary AR expression changes throughout development, growth, and reproductive cycle of male viscacha. To test this hypothesis, we performed an immunohistochemical and morphometrical study of AR in the pituitary PD of male viscachas, during development, growth, and the annual reproductive cycle. This immunohistochemical study might be useful for discussing the probable role of androgens in the pituitary development of viscachas and their participation in the reproductive stage along the year.

## 2. Materials and Methods

**2.1. Animals.** The viscachas were captured in their habitat near San Luis, Argentina (33° 20' south latitude, 760 m altitude), using traps placed in their burrows. In San Luis, in summer, the light phase is up to 14 h light daily (14L:10D) with an average temperature of 25°C. In winter, the light phase decreases to 10 h (10L:14D), and the average temperature is 10°C. In spring, the light phase increases to 12 h (12L:12D), and the average temperature is 15°C.

A total of eight fetal male pituitary glands were collected. The fetal pituitaries were collected from fetuses at mid- ( $n = 4$ ) and late ( $n = 4$ ) pregnant females classified on the basis of fetal weight and crown-heel length [38, 39]. The male animals were carefully classified into immature (1–2 kg;  $n = 4$ ) and prepubertal (3–4 kg;  $n = 4$ ) according to body weight and light microscopy observations of testes [30, 40]. Twelve adult male viscachas weighing 5–7 kg were captured during the most representative months of their reproductive cycle, for a period of over 1 year: 4 animals during the reproductive period in summer to early autumn (February to April), 4 animals in the gonadal regression period in winter (July), and 4 animals in the gonadal recovery period in spring (September). The reproductive condition of viscachas was carefully assessed on the basis of observations by light microscopy of testes.

The animals were intramuscularly anesthetized with a combination of ketamine (Ketamina 50, Holliday-Scott SA) and xylazine (Vetanarcol, König SA) at a dose of 12 and 0.4 mg/kg, respectively. The blood was collected for cardiac puncture for the evaluation of serum hormone concentration and quickly sacrificed by intracardiac injection of Euthanyl (0.25 mL/Kg body weight, sodium pentobarbital, sodium diphenylhydantoin, Brouwer S.A.). The brain was rapidly exposed and the pituitary processed for light microscopy. The pituitaries were fixed in Bouin's fluid, embedded in paraffin, and sagittally sectioned (5  $\mu$ m thick), following the design used in previously reported studies [30, 32].

The experimental design was approved by the local ethics committee and was in agreement with the National Institute of Health (NIH, USA) guidelines for the use of experimental animals. Moreover, the Biodiversity Control Area of the San Luis Ministry of the Environment (Argentina) approved a study protocol for conducting scientific research within the territory of this province (Resolution number 45.PBD.2014).

**2.2. Immunohistochemistry of AR in the Pituitary.** The tissue sections were stained using the streptavidin-biotin

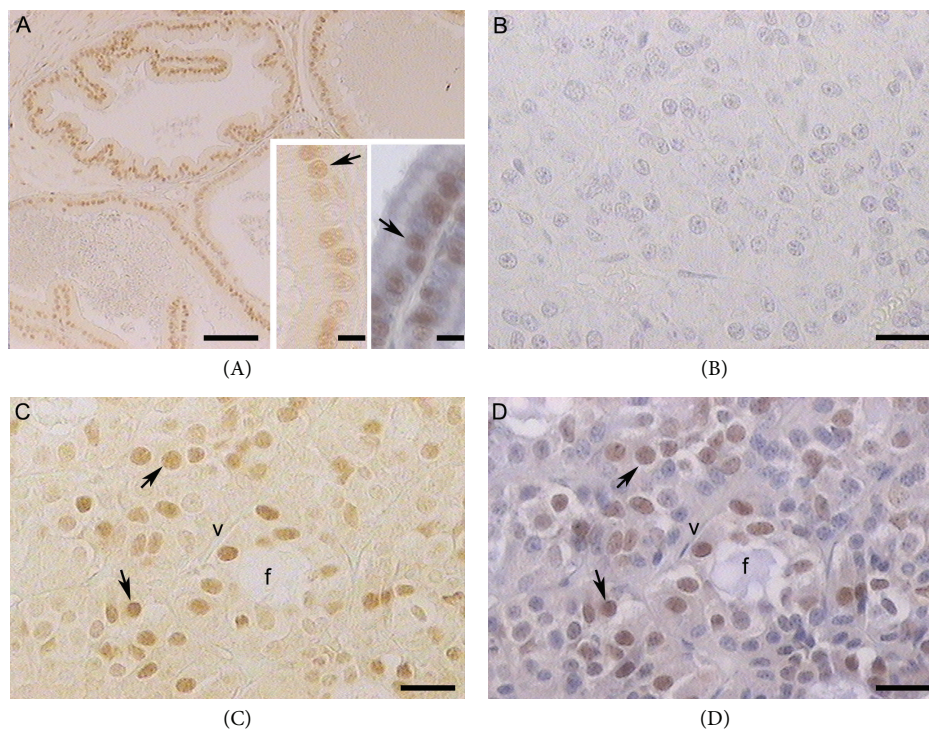


FIGURE 1: (A) Rat prostate, a positive control of immunoperoxidase staining with anti-AR (N-20) without hematoxylin staining. Insets: immunolabeled nuclei of epithelial cells (arrows) without (left) and with (right) counterstained hematoxylin. (B) Pituitary of viscacha, a negative control of immunohistochemistry counterstaining with hematoxylin. ((C), (D)) Pituitary of viscacha, staining with anti-AR (N-20) without hematoxylin staining (C) and counterstaining with hematoxylin (D). ARn-ir cells (arrows). Blood vessels, v; follicular structures, f. (A) Scale bar: 100  $\mu\text{m}$ . (B), (C), and (D) and insets scale bar: 25  $\mu\text{m}$ .

peroxidase complex method at 20°C. The sections were first deparaffinized with xylene, hydrated through decreasing concentrations of ethanol, and rinsed with distilled water and phosphate-buffered saline (PBS, 0.01 M, pH 7.4). Antigen retrieval was performed by microwaving the sections for 6 min (2  $\times$  3 min) at full power in a sodium citrate buffer (0.01 M, pH 6.0). Endogenous peroxidase activity was inhibited with 3% H<sub>2</sub>O<sub>2</sub> in water for 20 min. Non-specific binding sites for immunoglobulins were blocked by incubation for 20 min with normal serum diluted in PBS containing 1% bovine serum albumin, 0.09% sodium azide, and 0.1% Tween-20. Sections were incubated with the primary antibody: 6 hours in a humidified chamber at 20°C with rabbit polyclonal anti-human (h) AR (N-20; Santa Cruz Biotechnology, Santa Cruz, CA, USA). After rinsing with PBS for 10 min, immunohistochemical visualization was carried out using the Super Sensitive Ready-to-Use Immunostaining Kit (BioGenex, San Ramon, CA, USA), which was used as follows: sections were incubated for 30 min with diluted biotinylated anti-IgG and, after being washed in PBS, were incubated for 30 min with horseradish peroxidase conjugated streptavidin and were finally washed in PBS. AR immunoreactivity cells (AR-ir cells) were visualized using freshly prepared solution with 100  $\mu\text{L}$  3,3'-diaminobenzidine tetrahydrochloride chromogen in 2.5 mL PBS and 50  $\mu\text{L}$  H<sub>2</sub>O<sub>2</sub> substrate solution. In all cases, two experiments for controlling the specificity of the primary antibody were made:

(i) omission of primary antibody and (ii) adsorption of primary antibody with a homologous antigen. No positive structures or cells were found in these sections. Rat prostate was used as positive control (Figure 1).

**2.3. Morphometric Analysis.** A computer-assisted image analysis system was used for the morphometric analysis as previously reported [37, 41]. The image was displayed on a color monitor; a standard area of 18141.82  $\mu\text{m}^2$  (reference area) was defined on the monitor; distance calibration was performed using a slide with a micrometric scale for microscopy (Reichert, Austria). The morphometric study was carried out as follows: 3-4 regularly spaced serial tissue sections (100  $\mu\text{m}$  each) from a pituitary were used, and microscopic fields were examined under a 40x objective. In each section, 25 microscopic fields were randomly selected throughout the PD, five from each region (ventral, medial, and dorsal regions) or end (rostral and caudal ends) of the PD. In each image, the percentage of immunoreactive (-ir) cells in the PD (percentages of ARn-ir, ARc-ir) was obtained according to the formula  $A/(A + B) \times 100$ . Each image contained approximately 250–280 cells. The number of immunoreactive cells (A) and the number of nuclei in immunonegative cells (B) were counted.

**2.4. Testosterone Serum Concentrations.** Blood samples were incubated at 4°C for 30 min and centrifuged at 5,000 g for



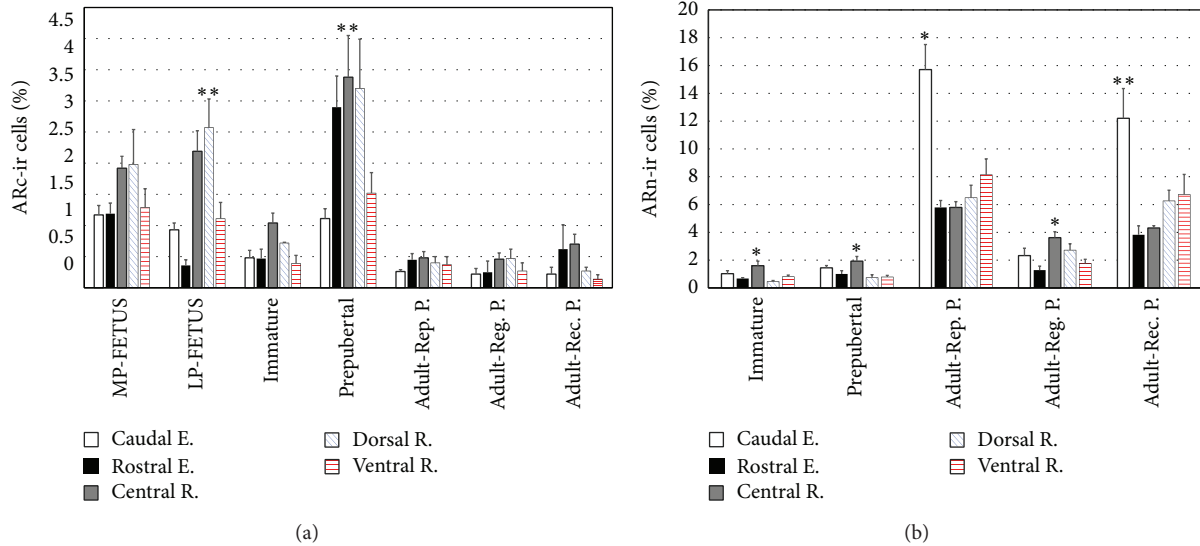


FIGURE 2: Morphometry of AR-ir cells in pituitary of male viscacha in different pituitary PD zones. (a) % ARC-ir cells. LP-FETUS: \*\*  $P < 0.01$  dorsal R. versus ventral R., rostral E., and caudal E. Prepubertal: \*\*  $P < 0.01$  medial R. versus ventral R. and caudal E. Adults: the percentage of ARC-ir cells did not reveal statistically significant changes in PD zones. (b) % ARn-ir cells. Immature: \*  $P < 0.05$  medial R. versus dorsal R. and rostral E. Prepubertal: \*  $P < 0.05$  medial R. versus dorsal R. and ventral R. Adult-Rep. P.: \*  $P < 0.05$  caudal E. versus the other PD zones. Adult-Reg. P.: \*  $P < 0.05$  medial R. versus ventral R. and rostral E. Adult-Rec. P.: \*\*  $P < 0.01$  caudal E. versus rostral E. and medial R. Fetuses from midpregnancy, MP-FETUS; fetuses from late pregnancy, LP-FETUS; reproductive period, Rep. P.; gonadal regression period, Reg. P.; gonadal recovery period, Rec. P.; region, R.; end, E.

5 min, and serum was removed. Testosterone serum concentrations were measured using the total testosterone test as previously reported by Chaves et al. [35]. This test is a solid-phase competitive chemiluminescent enzyme immunoassay run on a Siemens\* Medical IMMULITE\* 1000 Immunoassay Analyzer (Siemens Medical Solutions Diagnostics).

**2.5. Statistical Analysis.** The results were expressed as mean  $\pm$  the standard error of the mean (SEM) for all morphological data sets. The data were analyzed by nonparametric test procedure, the Kruskal-Wallis test, for overall significance of group, followed by the Mann-Whitney test for individual comparisons, using the Infostat 2008 version. A  $P$  value of less than 0.05 was considered statistically significant.

### 3. Results

AR-ir cells were studied by immunohistochemistry on each zone of the pituitary PD parenchyma of fetal, immature, prepubertal, and adult male viscachas. The AR-ir cells were observed throughout the PD parenchyma, and immunohistochemical results revealed their presence in the nuclei (ARn-ir) and in the cytoplasm (ARC-ir).

In fetal pituitary from midpregnancy, scarce ARn-ir cells and intensely stained ARC-ir cells were located in the medial region and extended towards the ventral and dorsal regions. However, the percentages of ARn-ir cells (caudal end:  $0.04 \pm 0.02\%$ ; rostral end:  $0.05 \pm 0.03\%$ ; central region:  $0.55 \pm 0.15\%$ ; dorsal region:  $0.15 \pm 0.07\%$ ; ventral region:  $0.16 \pm 0.07\%$ ) and the percentages of ARC-ir cells did not differ significantly

among different zones of the PD ( $P > 0.05$ ) (Figures 2(a), 3(A), and 3(B)).

In fetal pituitary from late pregnancy, ARC-ir cells were found around blood vessels or among other pituitary parenchymal cells. The percentage of ARC-ir cells in the dorsal region was significantly higher ( $P < 0.01$ ) than in the ventral region and at the rostral and caudal ends (Figures 2(a), 3(C), and 3(D)). ARn-ir cells were few and frequently spherical, and some of them were irregular in shape. The percentage of these cells did not vary among different PD zones ( $P > 0.05$ ; caudal end:  $0.54 \pm 0.23\%$ ; rostral end:  $0.21 \pm 0.02\%$ ; central region:  $0.25 \pm 0.10$ ; dorsal region:  $0.40 \pm 0.10\%$ ; ventral region:  $0.28 \pm 0.10\%$ ).

In pituitary PD of immature animals, the ARC-ir cells were located in the medial region and extended towards the caudal end. The cytoplasmic immunostaining was less intense than in fetal glands cells. Several ARC-ir cells were oval and their spherical nucleus was located at one end of the cytoplasm. The percentage of ARC-ir cells did not differ significantly ( $P > 0.05$ ) in different PD zones (Figure 2(a)). Intensely stained ARn-ir cells were mainly observed in the medial region, where their percentage was significantly higher than in the dorsal region and rostral end ( $P < 0.05$ ; Figures 2(b) and 3(E)–3(H)).

In prepubertal viscachas, numerous immunopositive AR-ir cells were distributed throughout the PD parenchyma. These cells were arranged around blood vessels at the rostral end and in the medial and dorsal regions. In the ventral region, there were some irregular AR-ir cells with a cytoplasmic prolongation surrounding blood vessels or between other parenchymal cells. The ARC-ir cells showed significant

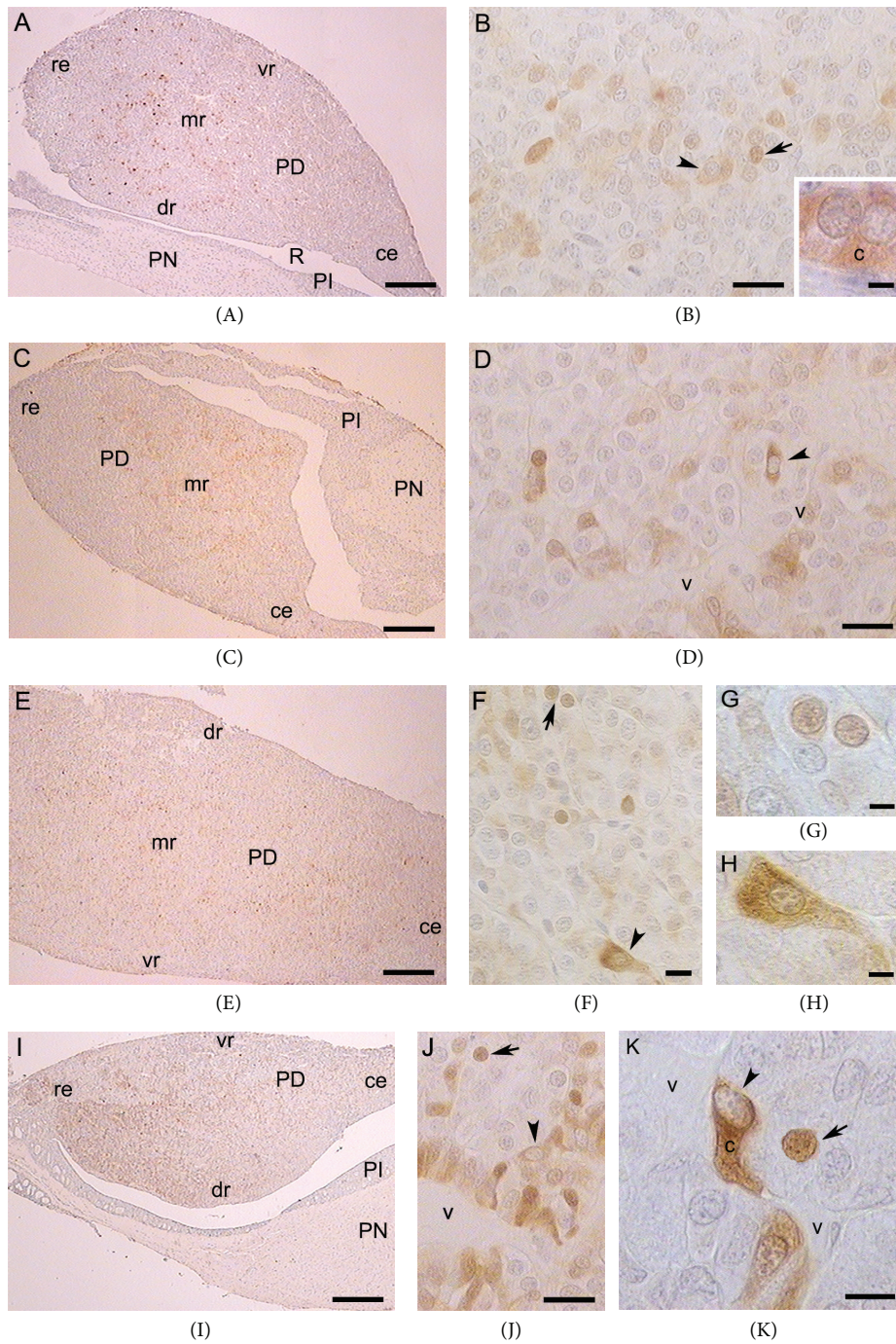


FIGURE 3: AR immunohistochemical staining of viscacha pituitaries. ((A), (B)) Sections of a fetal pituitary from midpregnancy showing the different zones of PD (A). In the medial region ARn-ir and ARc-ir cells were present (B). *Inset*: ARc-ir cells (c) with a negative nucleus. ((C), (D)) Images of a fetal pituitary from late pregnancy. Isolated ARc-ir cells around blood vessel (D). ((E), (F), (G), and (H)) AR-ir cells in a pituitary gland of immature viscacha. There are cells throughout the PD (E). The ARn-ir cells are increased in the medial region (F). Magnification of ARn-ir cells (G) and a pituitary cell with heterogeneous cytoplasmic staining (H). ((I), (J), and (K)) Pituitary of a prepubertal viscacha. ARc-ir cells in groups in contact with blood vessel (J) and others with a cytoplasmic prolongation (K). ARn-ir cells (arrows), ARc-ir cells (arrowheads). PD, pars distalis; PI, pars intermedia; PN, pars nervosa; R, Rathke's pouch; ce, caudal end; re, rostral end; vr, ventral region; mr, medial region; dr, dorsal region; blood vessels, v. ((A), (C), and (I)) Scale bar 500  $\mu\text{m}$ . (E) Scale bar 250  $\mu\text{m}$ . ((B), (D), (F), and (J)) Scale bar 25  $\mu\text{m}$ . *Inset of* (B), (G), (H), and (K) scale bar 10  $\mu\text{m}$ . Images counterstaining with hematoxylin.

TABLE 1: AR expression in pituitary PD of male viscachas.

	Distribution	Immunostaining pattern	Morphological characteristics
MP-FETUS	Isolated or in small groups	Cytoplasmic and homogeneous	Oval or spherical cells
LP-FETUS	Isolated or in small groups	Cytoplasmic and homogeneous	Oval or spherical cells
Immature	Isolated or in small groups	Homogeneous and heterogeneous cytoplasm, some intensely stained nuclei	Cells oval in shape
Prepubertal	Isolated or in groups	Homogeneous cytoplasm, intensely nuclear staining	Irregular cells
Adult-Rep. P.	Isolated or in small groups	Nuclear immunoreactivity, scarce immunostained cytoplasm	Oval, spherical, or irregular cells
Adult-Reg. P.	Isolated	Nuclear immunoreactivity, scarce immunostained cytoplasm	Small and spherical cytoplasm
Adult-Rec. P.	Isolated or in small groups	Nuclear immunoreactivity, intense cytoplasmic staining	Spherical, oval, or irregular cytoplasm and nuclei, short cytoplasmic prolongation

variations; the highest value was found in the medial region in relation to the ventral region and caudal end ( $P < 0.01$ ) whereas the lowest percentage was found at the caudal end (Figure 2(a)). The immunostaining of ARn-ir cells was intense in the dorsal region, and the highest percentage of these cells was found in the medial region in relation to the dorsal and ventral regions and rostral end ( $P < 0.05$ ; Figures 2(b) and 3(I)–3(K)).

In PD of adult animals, the AR expression mainly had a nuclear localization. In the reproductive period, several positive nuclei were found at the caudal end and dorsal region as well as on the dorsal and ventral edges of PD. The percentage of ARn-ir cells was significantly higher at the caudal end in relation to the other PD zones ( $P < 0.05$ ; Figure 2(b)). A small number of ARc-ir cells were frequently located in the medial region. The cytoplasmic immunolabeling pattern was homogeneous and sometimes intense. In addition, some cells presented heterogeneous cytoplasmic staining and positivity on the nuclear periphery (Figures 4(A)–4(E)). No significant changes were observed in the percentage of ARc-ir cells between different PD zones ( $P > 0.05$ ; Figure 2(a)).

In the gonadal regression period, AR-ir cells were mainly found in the medial region of PD. The immunostained cytoplasm were small, with medial or eccentric nucleus. There were no significant differences in ARc-ir cells between different PD zones ( $P > 0.05$ ; Figure 2(a)), whereas ARn-ir cells were more numerous in the medial region in relation to the ventral region and the rostral end ( $P < 0.05$ ; Figure 2(b)).

In the gonadal recovery period, an increase of AR-ir cells throughout PD parenchyma was observed. In this period, the cytoplasmic labeling was more intense and homogeneous in relation to the gonadal regression period (Figures 4(F)–4(I)). The percentage of ARc-ir cells was not significantly different between the PD zones ( $P > 0.05$ ; Figure 2(a)). The percentage of ARn-ir cells was higher at the caudal end in relation to the rostral end and the medial region ( $P < 0.01$ ; Figure 2(b)). Table 1 shows a summary of the main cytological characteristics.

The morphometric variations of the AR expression in relation to development and growth in viscachas PD were studied by comparing the data obtained from fetal pituitary during mid- and late pregnancy and from immature, prepubertal, and adult pituitary in the reproductive period. There was an increase in ARn-ir cells percentage and a significant decrease in the percentage of ARc-ir cells in immature animals as compared to fetus and in adult animals during the reproductive period as compared to prepubertal animals. The percentage of ARc-ir cells increased significantly in prepubertal in relation to immature viscachas. Statistical analysis is shown in Figure 5.

In order to study the seasonal expression of AR, the three periods of the reproductive cycle were analyzed. The total percentages of ARn-ir and ARc-ir cells obtained from three periods of the reproductive cycle of adult male viscachas were statistically analyzed (Figure 5). The percentage of ARn-ir cells showed a significant decrease during the gonadal regression period ( $P < 0.001$ ). No variations were observed in the percentage of ARc-ir cells throughout the reproductive cycle ( $P > 0.05$ ).

The testosterone serum concentrations of immature animals were below the detection limit ( $<0.20$  ng/mL) and too low to reliably reveal differences from the other groups. The testosterone serum concentrations of prepubertal and adult viscachas in the gonadal regression period were lower than those in adult viscachas during their reproductive and gonadal recovery periods ( $P < 0.001$ ; Figure 6).

#### 4. Discussion

The analysis of the AR expression in the viscacha pituitary gland is essential for a better understanding of the regulatory systems since androgens are involved in the control of the reproductive function. This study represents the first description of variations in the regionalization and in the immunostaining pattern of pituitary AR in relation to the development, growth, and reproductive cycle of male viscachas.





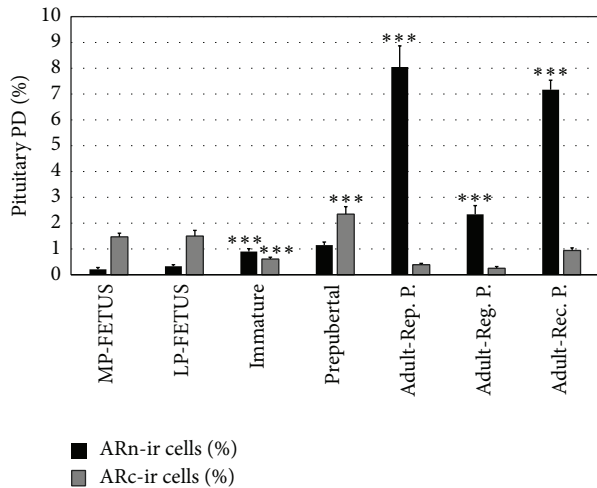


FIGURE 5: Total percentage of ARn-ir cells and ARc-ir cells in fetus (from mid- and late pregnancy), immature, prepubertal, and adult viscachas (during reproductive, gonadal regression, and gonadal recovery periods). The result revealed statistically significant changes: \*\*\* $P < 0.001$  immature versus LP-FETUS; prepubertal versus immature; Adult-Rep. P. versus prepubertal; Adult-Reg. P. versus Adult-Rep. P.; Adult-Rec. P. versus Adult-Reg. P.

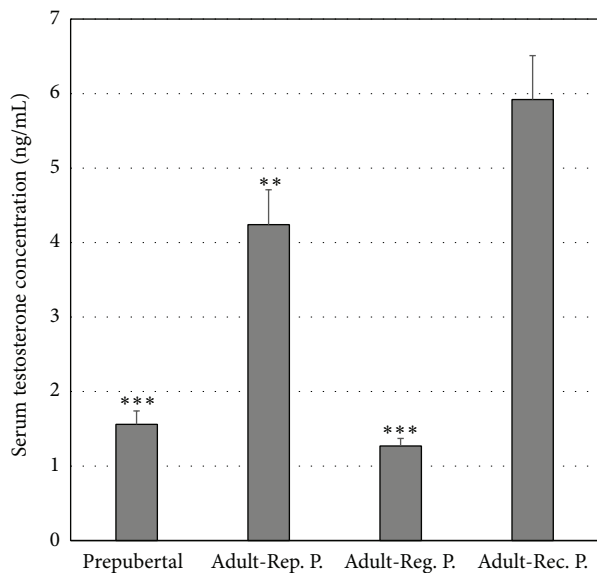


FIGURE 6: Testosterone serum concentrations. The values are expressed as mean  $\pm$  SEM ( $n = 4$ ). \*\* $P < 0.01$ : Adult-Rep. P. versus Adult-Reg. P.; \*\*\* $P < 0.001$ : prepubertal versus Adult-Rep. P.; Adult-Reg. P. versus Adult-Rec. P.

during the reproductive period and minimum values during the gonadal regression period; (6) the amount of ARn-ir cells was directly related to testosterone serum concentration.

There are still many questions about the relations of AR expression with the pituitary development and hormone secretion. Wu et al. [12] did not observe AR in the pituitary gland during late gestation and suggested that the lack of

feedback by way of AR at pituitary levels may have important consequences on the fetal pituitary function. More recently, Yuan et al. [18] have reported in sheep that AR emerges in the anterior pituitary before day 60 of gestation, and the percentage of the total anterior pituitary cells expressing the receptor did not change throughout gestation. In addition, other studies have concluded that the fetal brain and pituitary are target sites for circulating androgens or androgen precursors in fetal plasma, and the increase of androgens in hypothalamic action immediately prior to birth might be critical to the timing of parturition [13]. Huang and Yuan [42] have reported that AR expression reflects the functional status of androgen in the pituitary of male sheep lamb. These authors suggest that during sexual maturity the feedback of sex hormones on the pituitary is at low level and stimulates gonadotropin secretion.

Some reproductive characteristics of female viscachas, such as polyovulation, implantation, and offspring birth, have been described in previous studies. Gestation lasts approximately 154 days, an unusually long period for a rodent, and it finishes in spring when the survival probabilities are ideal for the mother and offspring [38, 43, 44]. The results obtained in this work demonstrate AR in fetal pituitary from midpregnancy, indicating that AR are present around days 75–80 of gestation in the pituitary cells. These receptors are potentially in position to participate in the regulation of the fetal androgen function. Furthermore, the analysis of the distribution, morphometry, and immunostaining pattern of AR-ir cells in the parenchyma of fetal glands suggests that these cells contain variable amounts of AR, and they are morphologically related to blood supply and other endocrine cells of PD parenchyma. In late pregnancy of viscacha, the percentages of ARc-ir and ARn-ir cells did not change with respect to the values found during midpregnancy. These results suggested that fetal pituitary AR might have any specific function since midgestation in viscacha.

The hypothalamic-pituitary-gonadal axis is activated during puberty when hormonal modulation of sexual behavior is organized [45]. During male development, the masculinization is given by the hormones produced by the fetal testes, primarily testosterone [46, 47]. The gonadal steroids feed back to the central nervous system to exert a key role in the central control of the reproductive axis by regulating the release of the gonadotropin-releasing hormone (GnRH) [48]. However, the neurons that synthesize GnRH did not express AR and there are sex-steroids sensitive neurons upstream the GnRH cells, where the feedback signals of the steroid might be processed to the GnRH cells [49]. The neurons of hypothalamic nuclei that expressed kisspeptin (K) and neurokinin B (NKB) may sense circulating levels of testosterone through the expression of AR [49, 50]. In rodents, sheep, and primates, K and NKB have recently been implicated in the control of puberty and the maintenance of the reproductive function in adulthood [51–53]. In the pituitary, the expression of AR has been mainly observed in gonadotrophs [18, 54, 55] and gonadal steroid hormones affect the gonadotroph population in order to regulate their activity.



In immature male viscachas, a significant increase of nuclear AR and an important decrease of cytoplasmic AR were observed. In prepubertal viscachas, more nuclei and cytoplasm appear, and there is a clear increase of ARc-ir cells mainly in the medial region, suggesting that more cells begin to express AR in preparation for sexual maturation. In adult, the immunostaining is mainly nuclear and regionalized at the caudal end of PD, suggesting that AR are active in the PD cells. The present results demonstrate variations in the regionalization and immunostaining pattern of AR during sexual maturity, probably in relation to the contribution of androgens reaching the different pituitary zones through blood vessels. Thus, the nuclear AR expression in pituitary PD of viscacha varies according to gonadal development and testosterone serum concentration. Our results are in agreement with those found by Wood and Newman [24], suggesting that a subset of unoccupied receptors is located in the cell cytoplasm in the absence of ligand.

Bibliographic reports referring to seasonal variations of RA are scarce. Lu et al. [56] have recently demonstrated a stronger expression of AR in scented glands during the breeding season, suggesting that androgens may directly influence the glandular function of the muskrats and courtship behavior. The viscacha is a seasonal breeding rodent and previous studies have demonstrated that testosterone acts on gonadotrophs, whether directly or indirectly, regulating their activity in the pituitary gland [28]. Castrated viscacha models have been used to examine the withdrawal effects of circulating androgens on pituitary cells, mainly on the gonadotrophs, due to their involvement in the reproductive processes. In addition, castration resulted in a significant decrease in the percentage of cells expressing AR throughout the PD [37]. The present results demonstrate changes in the amount of pituitary AR-ir cells during the annual reproductive cycle of adult male viscacha, which might be due to variations in the supply of ligands across blood irrigation. The maximum values of AR expression were found in the reproductive period and the minimum values in the regression period in relation to androgen concentrations. Thus, AR might regulate the activity of the pituitary cells involved in the reproductive cycle of adult male *Lagostomus*.

In conclusion, our results demonstrate that AR expression is related to the pituitary histophysiological changes during the growth and sexual maturity of male viscacha. Moreover, they are likely to participate in the seasonal reproduction control in adulthood. However, the precise action mechanism of AR in the pituitary viscacha needs further study.

### Conflict of Interests

The authors declare that there is no conflict of interests regarding the publication of this paper.

### Acknowledgments

The authors wish to thank Mrs. A. Bernardi and Mr. J. Arroyuelo for their technical participation. This work was supported by Project 2-2614, Secretaria de Ciencia y Técnica, Universidad Nacional de San Luis.

### References

- [1] A. K. Roy, Y. Lavrovsky, C. S. Song et al., "Regulation of androgen action," *Vitamins & Hormones*, vol. 55, pp. 309–352, 1999.
- [2] S. Denayer, C. Helsen, L. Thorrez, A. Haelens, and F. Claessens, "The rules of DNA recognition by the androgen receptor," *Molecular Endocrinology*, vol. 24, no. 5, pp. 898–913, 2010.
- [3] E. V. Jensen, G. L. Greene, L. E. Closs, E. R. DeSombre, and M. Nadji, "Receptors reconsidered: a 20-year perspective," *Recent Progress in Hormone Research*, vol. 38, pp. 1–40, 1982.
- [4] B. D. Schanbacher, M. P. Johnson, and D. J. Tindall, "Androgenic regulation of luteinizing hormone secretion: relationship to androgen binding in sheep pituitary," *Biology of Reproduction*, vol. 36, no. 2, pp. 340–350, 1987.
- [5] R. J. Handa, D. L. Reid, and J. A. Resko, "Androgen receptors in brain and pituitary of female rats: cyclic changes and comparisons with the male," *Biology of Reproduction*, vol. 34, no. 2, pp. 293–303, 1986.
- [6] J. V. A. Choate and J. A. Resko, "Effects of androgen on brain and pituitary androgen receptors and LH secretion of male guinea pigs," *The Journal of Steroid Biochemistry and Molecular Biology*, vol. 59, no. 3–4, pp. 315–322, 1996.
- [7] T. J. Spady, R. Shayya, V. G. Thackray, L. Ehrensberger, J. S. Bailey, and P. L. Mellon, "Androgen regulates follicle-stimulating hormone  $\beta$  gene expression in an activin-dependent manner in immortalized gonadotropes," *Molecular Endocrinology*, vol. 18, no. 4, pp. 925–940, 2004.
- [8] P. B. Connolly, J. V. A. Choate, and J. A. Resko, "Effects of exogenous androgen on brain androgen receptors of the fetal rhesus monkey," *Neuroendocrinology*, vol. 59, no. 3, pp. 271–276, 1994.
- [9] J. A. Resko, A. Perkins, C. E. Roselli, J. A. Fitzgerald, J. V. A. Choate, and F. Stormshak, "Endocrine correlates of partner preference behavior in rams," *Biology of Reproduction*, vol. 55, no. 1, pp. 120–126, 1996.
- [10] S. E. Abdelgadir, C. E. Roselli, J. V. A. Choate, and J. A. Resko, "Androgen receptor messenger ribonucleic acid in brains and pituitaries of male Rhesus monkeys: studies on distribution, hormonal control, and relationship to luteinizing hormone secretion," *Biology of Reproduction*, vol. 60, no. 5, pp. 1251–1256, 1999.
- [11] R. W. Bonsall, H. D. Rees, and R. P. Michael, "The distribution, nuclear uptake and metabolism of [ $^3$ H]dihydrotestosterone in the brain, pituitary gland and genital tract of the male rhesus monkey," *Journal of Steroid Biochemistry*, vol. 23, no. 4, pp. 389–398, 1985.
- [12] S. S. Wu, P. W. Nathanielsz, and T. J. McDonald, "Immunocytochemical distribution of androgen receptors in the hypothalamus and pituitary of the fetal baboon in late gestation," *Developmental Brain Research*, vol. 84, no. 2, pp. 278–281, 1995.
- [13] C. E. Wood and M. Keller-Wood, "Ontogeny of androgen receptor expression in the ovine fetal central nervous system and pituitary," *Neuroscience Letters*, vol. 439, no. 2, pp. 153–156, 2008.
- [14] J. V. A. Choate, O. D. Slayden, and J. A. Resko, "Immunocytochemical localization of androgen receptors in brains of developing and adult male rhesus monkeys," *Endocrine*, vol. 8, no. 1, pp. 51–60, 1998.

- [15] J. E. Woods, C. M. Blandin, and R. C. Thommes, "Oncogeny of immunocytochemically demonstrable androgen- and androgen receptor-containing cells in the hypothalamus and adenohypophysis of the chick embryo," *Growth, Development and Aging*, vol. 58, no. 1, pp. 21–31, 1994.
- [16] A. Crocoll, C. C. Zhu, A. C. B. Cato, and M. Blum, "Expression of androgen receptor mRNA during mouse embryogenesis," *Mechanisms of Development*, vol. 72, no. 1–2, pp. 175–178, 1998.
- [17] O. Naess, E. Haug, A. Attramadal, A. Aakvaag, V. Hansson, and F. French, "Androgen receptors in the anterior pituitary and central nervous system of the androgen 'insensitive' (Tfm) rat: correlation between receptor binding effects of androgens on gonadotropin secretion," *Endocrinology*, vol. 99, no. 5, pp. 1295–1303, 1976.
- [18] X. J. Yuan, Y. Q. He, J. L. Liu, H. S. Luo, J. H. Zhang, and S. Cui, "Expression of androgen receptor and its co-localization with estrogen receptor-alpha in the developing pituitary gland of sheep fetus," *Histochemistry and Cell Biology*, vol. 127, no. 4, pp. 423–432, 2007.
- [19] R. J. Nelson, D. L. Denlinger, and D. E. Somers, *Photoperiodism: The Biological Calendar*, Oxford University Press, New York, NY, USA, 2010.
- [20] Y. T. Shao, M. Arvidsson, S. Trombley, R. W. Schulz, M. Schmitz, and B. Borg, "Androgen feedback effects on LH and FSH, and photoperiodic control of reproduction in male three-spined sticklebacks, *Gasterosteus aculeatus*," *General and Comparative Endocrinology*, vol. 182, pp. 16–23, 2013.
- [21] L. Z. Garamszegi, M. Eens, S. Hurtrez-Boussès, and A. P. Møller, "Testosterone, testes size, and mating success in birds: a comparative study," *Hormones & Behavior*, vol. 47, no. 4, pp. 389–409, 2005.
- [22] A. Leska, J. Kiezun, B. Kaminska, and L. Dusza, "Seasonal changes in the expression of the androgen receptor in the testes of the domestic goose (*Anser anser f. domestica*)," *General and Comparative Endocrinology*, vol. 179, no. 1, pp. 63–70, 2012.
- [23] E. L. Bittman, D. A. Ehrlich, J. L. Ogdahl, and A. E. Jetton, "Photoperiod and testosterone regulate androgen receptor immunostaining in the Siberian hamster brain," *Biology of Reproduction*, vol. 69, no. 3, pp. 876–884, 2003.
- [24] R. I. Wood and S. W. Newman, "Intracellular partitioning of androgen receptor immunoreactivity in the brain of the male Syrian hamster: effects of castration and steroid replacement," *Journal of Neurobiology*, vol. 24, no. 7, pp. 925–938, 1993.
- [25] M. J. Tetel, T. C. Ungar, B. Hassan, and E. L. Bittman, "Photoperiodic regulation of androgen receptor and steroid receptor coactivator-1 in Siberian hamster brain," *Molecular Brain Research*, vol. 131, no. 1–2, pp. 79–87, 2004.
- [26] S. Domínguez, R. S. Piezzi, L. Scardapane, and J. A. Guzman, "A light and electron microscopic study of the pineal gland of the viscacha (*Lagostomus maximus maximus*)," *Journal of Pineal Research*, vol. 4, no. 2, pp. 211–219, 1987.
- [27] L. Fuentes, M. Møller, E. Muñoz, C. Calderón, and L. Pelzer, "Seasonal variations in the expression of the mRNA encoding  $\beta$ 1-adrenoceptor and AA-NAT enzyme, and in the AA-NAT activity in the pineal gland of vizcacha (*Lagostomus maximus maximus*)—correlation with serum melatonin," *Biological Rhythm Research*, vol. 34, no. 2, pp. 193–206, 2003.
- [28] V. Filippa, A. Penissi, and F. Mohamed, "Seasonal variations of gonadotropins in the pars distalis male viscacha pituitary. Effect of chronic melatonin treatment," *European Journal of Histochemistry*, vol. 49, no. 3, pp. 291–300, 2005.
- [29] V. Filippa and F. Mohamed, "ACTH cells of pituitary pars distalis of viscacha (*Lagostomus maximus maximus*): immunohistochemical study in relation to season, sex, and growth," *General and Comparative Endocrinology*, vol. 146, no. 3, pp. 217–225, 2006.
- [30] V. Filippa and F. Mohamed, "Immunohistochemical study of somatotrophs in pituitary pars distalis of male viscacha (*Lagostomus maximus maximus*) in relation to the gonadal activity," *Cells Tissues Organs*, vol. 184, no. 3–4, pp. 188–197, 2007.
- [31] V. Filippa and F. Mohamed, "Immunohistochemical and morphometric study of pituitary pars distalis thyrotrophs of male viscacha (*Lagostomus maximus maximus*): seasonal variations and effect of melatonin and castration," *The Anatomical Record*, vol. 291, no. 4, pp. 400–409, 2008.
- [32] V. Filippa and F. Mohamed, "Morphological and morphometric changes of pituitary lactotrophs of viscacha (*Lagostomus maximus maximus*) in relation to reproductive cycle, age, and sex," *The Anatomical Record*, vol. 293, no. 1, pp. 150–161, 2010.
- [33] E. Munoz, T. Fogal, S. Dominguez, L. Scardapane, J. Guzman, and R. S. Piezzi, "Seasonal changes of the Leydig cells of viscacha (*Lagostomus maximus maximus*). A light and electron microscopy study," *Tissue and Cell*, vol. 29, no. 1, pp. 119–128, 1997.
- [34] E. M. Muñoz, T. Fogal, S. Dominguez, L. Scardapane, and R. S. Piezzi, "Ultrastructural and morphometric study of the sertoli cell of the viscacha (*Lagostomus maximus maximus*) during the annual reproductive cycle," *The Anatomical Record*, vol. 262, no. 2, pp. 176–185, 2001.
- [35] E. M. Chaves, C. Aguilera-Merlo, A. Cruceño et al., "Seasonal morphological variations and age-related changes of the seminal vesicle of viscacha (*Lagostomus maximus maximus*): an ultrastructural and immunohistochemical study," *The Anatomical Record*, vol. 295, no. 5, pp. 886–895, 2012.
- [36] A. M. Cruceño, J. C. de Rosas, M. Fóscolo et al., "Effects of photoperiod one epididymal and sperm morphology in a wild rodent, the viscacha (*Lagostomus maximus maximus*)," *ISRN Anatomy*, vol. 2013, Article ID 128921, 10 pages, 2013.
- [37] V. Filippa, D. Godoy, E. Perez, and F. Mohamed, "Effects of castration on androgen receptors and gonadotropins in the pituitary of adult male viscachas," *Reproduction, Fertility and Development*, vol. 26, no. 7, pp. 991–1000, 2014.
- [38] V. Filippa and F. Mohamed, "The pituitary of non-pregnant and pregnant viscachas (*Lagostomus maximus maximus*): a comparative study by immunohistochemistry and morphometric analysis," *Zoology*, vol. 113, no. 6, pp. 361–372, 2010.
- [39] N. P. Leopardo, F. Jensen, M. A. Willis, M. B. Espinosa, and A. D. Vitullo, "The developing ovary of the South American plains vizcacha, *Lagostomus maximus* (Mammalia, Rodentia): massive proliferation with no sign of apoptosis-mediated germ cell attrition," *Reproduction*, vol. 141, no. 5, pp. 633–641, 2011.
- [40] A. C. Llanos and J. A. Crespo, "Ecología de la vizcacha (*Lagostomus maximus maximus*) en el nordeste de la provincia de Entre Ríos," *Revista de Investigaciones Agrícolas Extra Nueva Serie*, no. 10, pp. 5–95, 1954.
- [41] V. Filippa, M. Acosta, and F. Mohamed, "Cellular associations of pituitary gonadotrophs in a rodent (*Lagostomus maximus maximus*) with photoperiod-dependent reproduction," *Tissue and Cell*, vol. 44, no. 6, pp. 351–357, 2012.
- [42] L. B. Huang and X. J. Yuan, "Expression of androgen receptor and estrogen receptor-alpha in the developing pituitary gland of male sheep lamb," *Animal Reproduction Science*, vol. 127, no. 3–4, pp. 164–168, 2011.

- [43] B. J. Weir, "The reproductive organs of the female plains viscacha, *Lagostomus maximus*," *Journal of Reproduction and Fertility*, vol. 25, no. 3, pp. 365–373, 1971.
- [44] D. L. Keefe and F. W. Turek, "Circadian time keeping processes in mammalian reproduction," *Oxford Reviews of Reproductive Biology*, vol. 7, pp. 346–400, 1985.
- [45] B. Shannon, Z. Stephens, and K. Wallen, "Environmental and social influences on neuroendocrine puberty and behavior in macaques and other nonhuman primates," *Hormones and Behavior*, vol. 64, no. 2, pp. 226–239, 2013.
- [46] D. J. MacLeod, R. M. Sharpe, M. Welsh et al., "Androgen action in the masculinization programming window and development of male reproductive organs," *International Journal of Andrology*, vol. 33, no. 2, pp. 279–287, 2010.
- [47] T. N'Tumba-Byn, D. Moison, M. Lacroix et al., "Differential effects of bisphenol A and diethylstilbestrol on human, rat and mouse fetal Leydig cell function," *PLoS ONE*, vol. 7, no. 12, Article ID e51579, 2012.
- [48] G. Fink, "Neuroendocrine regulation of pituitary function: general principles," in *Neuroendocrinology in Physiology and Medicine*, P. M. Conn and M. E. Freeman, Eds., pp. 107–134, Humana Press, Totowa, NJ, USA, 2000.
- [49] A. S. Kauffman, "Gonadal and nongonadal regulation of sex differences in hypothalamic kiss1 neurones," *Journal of Neuroendocrinology*, vol. 22, no. 7, pp. 682–691, 2010.
- [50] P. Ciofi, O. C. Lapirot, and G. Tramu, "An androgen-dependent sexual dimorphism visible at puberty in the rat hypothalamus," *Neuroscience*, vol. 146, no. 2, pp. 630–642, 2007.
- [51] N. E. Rance and T. R. Bruce, "Neurokinin B gene expression is increased in the arcuate nucleus of ovariectomized rats," *Neuroendocrinology*, vol. 60, no. 4, pp. 337–345, 1994.
- [52] R. L. Goodman, M. N. Lehman, J. T. Smith et al., "Kisspeptin neurons in the arcuate nucleus of the ewe express both dynorphin A and neurokinin B," *Endocrinology*, vol. 148, no. 12, pp. 5752–5760, 2007.
- [53] V. M. Navarro, "Interactions between kisspeptins and neurokinin B," *Advances in Experimental Medicine and Biology*, vol. 784, pp. 325–347, 2013.
- [54] N. Kimura, A. Mizokami, T. Oonuma, H. Sasano, and H. Nagura, "Immunocytochemical localization of androgen receptor with polyclonal antibody in paraffin-embedded human tissues," *The Journal of Histochemistry & Cytochemistry*, vol. 41, no. 5, pp. 671–678, 1993.
- [55] B. W. Scheithauer, K. Kovacs, S. Zorludemir, R. V. Lloyd, S. Erdogan, and J. Slezak, "Immunoexpression of androgen receptor in the nontumorous pituitary and in adenomas," *Endocrine Pathology*, vol. 19, no. 1, pp. 27–33, 2008.
- [56] L. Lu, S. Liu, Q. Li et al., "Seasonal expression of androgen receptor in scented gland of muskrat (*Ondatra zibethicus*)," *General and Comparative Endocrinology*, vol. 204, pp. 1–7, 2014.