

Case report

Open Access

Primary omental Gastrointestinal stromal tumor (GIST)

Takeshi Todoroki*¹, Takaaki Sano², Shinji Sakurai², Atsuki Segawa², Tamotsu Saitoh¹, Koichi Fujikawa¹, Shuji Yamada¹, Nobutsune Hirahara³, Yoshito Tsushima⁴, Ryuji Motojima¹ and Teiji Motojima¹

Address: ¹Department of Surgery, Motojima General Hospital, Ota, 373-0033 Japan, ²Department of Tumor Pathology Gunma University, Maebashi, Japan, ³Department of Gastroenterology, Motojima General Hospital, Ota, 373-0033 Japan and ⁴Diagnostic Radiology and Nuclear Medicine, Gunma University, Maebashi, Japan

Email: Takeshi Todoroki* - todoroki@ka2.so-net.ne.jp; Takaaki Sano - sanot@med.gunma-u.ac.jp; Shinji Sakurai - sshinji@med.gunma-u.ac.jp; Atsuki Segawa - asegawa@med.gunma-u.ac.jp; Tamotsu Saitoh - tsaitoh@ca2.so-net.ne.jp; Koichi Fujikawa - drkf@excite.co.jp; Shuji Yamada - yamadash@cb3.so-net.ne.jp; Nobutsune Hirahara - hira0817@otv.ne.jp; Yoshito Tsushima - yoshito@xa2.so-net.ne.jp; Ryuji Motojima - watashi@sk9.so-net.ne.jp; Teiji Motojima - watashi@sk9.so-net.ne.jp

* Corresponding author

Published: 12 June 2007

Received: 3 February 2007

World Journal of Surgical Oncology 2007, 5:66 doi:10.1186/1477-7819-5-66

Accepted: 12 June 2007

This article is available from: <http://www.wjso.com/content/5/1/66>

© 2007 Todoroki et al; licensee BioMed Central Ltd.

This is an Open Access article distributed under the terms of the Creative Commons Attribution License (<http://creativecommons.org/licenses/by/2.0>), which permits unrestricted use, distribution, and reproduction in any medium, provided the original work is properly cited.

Abstract

Background: We report herein a rare case of primary omental gastrointestinal stromal tumor (GIST).

Case presentation: A 65 year-old man was referred to our hospital with a huge abdominal mass occupying the entire left upper abdomen as shown by sonography. On computed tomography (CT), this appeared as a heterogeneous low-density mass with faint enhancement. Abdominal angiography revealed that the right gastroepiploic artery supplied the tumor. With such an indication of gastric GIST, liposarcoma, leiomyosarcoma or mesothelioma laparotomy was performed and revealed that this large mass measured 20 × 17 × 6 cm, arising from the greater omentum. It was completely resected. Histopathologically, it was composed of proliferating spindle and epithelioid cells with an interlacing bundle pattern. Immunohistochemically, the tumor was positive for myeloid stem cell antigen (CD34), weakly positive for c-KIT (CD117) and slightly positive for neuron-specific enolase (NSE), but negative for cytokeratin (CK), alpha-smooth muscle actin (SMA) and S-100 protein. A mutation was identified in the platelet-derived growth factor alpha (PDGFRA) juxtamembrane domain (exon 12, codon561) and the tumor was diagnosed as an omental GIST. The postoperative course was uneventful. The patient is treated by Glevec® and is alive well with no sign of relapse.

Conclusion: Our case demonstrated a weak immunohistochemical expression of c-kit (CD117) and a point mutation in PDGFRA exon 12 resulting in an Asp for Val⁵⁶¹ substitution. Imatinib therapy as an adjuvant to complete resection has been carried out safely. Because of the rarity of primary omental GISTs, it is inevitable to analyze accumulating data from case reports for a better and more detailed understanding of primary omental GISTs.

Background

GISTs are mesenchymal tumors, the majority of which is KIT (CD117)-positive, typically arising in association with the muscularis propria of the gastrointestinal tract wall. Accordingly, they occur most frequently in the stomach (60%), jejunum and ileum (30%), and less frequently in the duodenum (5%), < 5% colorectal < 1% in the esophagus and appendix [1]. A small number may originate not from the omentum, but from outside the gastrointestinal tract; these are designated extra-GISTs (EGISTs)[2]. To the best of our knowledge, thus far only 28 cases of primary omental GISTs, including that described in the present study, have been reported. Histopathologic and immunohistochemical characteristics of EGISTs are similar to GISTs, the majority of both having mutually exclusive gain-of-function KIT/PDGFR mutations. However, because of the rarity of the omental GISTs, it is difficult to assess their malignant potential, prognostic factors or efficacy of surgery alone or in combination with molecular targeting chemotherapy with the Kit/PDGFR tyrosine kinase inhibitor Imatinib, and their overall prognosis.

Here, we report a rare case of primary omental myxoid epithelioid GIST which we have characterized immunohistochemically and genetically. We review the English-language literature on primary omental GISTs.

Case presentation

A 65-year-old man was referred to our hospital in October 2006 with a huge abdominal tumor. A firm mass was palpated extending from the epigastrium to the left hypogastrium. There were no laboratory abnormalities, except a slight elevation of the total bilirubin (1.3 mg/dl) and lactate dehydrogenase (LDH: 217 IU/L) levels in the serum. The tumor markers carcinoembryonic antigen (CEA) and carbohydrate antigen (CA19-9) were within the normal range. Ultrasonography showed that the mass occupied almost the entire upper abdomen anterior to the bowel loops. On computed tomography (CT), a mass behind the left hepatic lobe showed heterogeneous low density with faint enhancement (Fig. 1). Abdominal angiography revealed that the tumor was vascularized mainly from the right epigastric artery (Fig. 2). We suspected liposarcoma, leiomyosarcoma, mesothelioma, or gastric GIST. At laparotomy on October 2006, a well-encapsulated tumor was found in the greater omentum. There was no adhesion to adjacent organs and structures but a pinpoint adhesion to the stomach. The right gastroepiploic artery and vein were prominent and stretched by the tumor, and a major supply vessel diverged from it in one stalk (Fig. 3). There was no evidence of metastasis in the abdominal cavity. Grossly, a well-demarcated reddish-gray solid tumor, 20 × 17 × 6 cm in size, showed irregular modularity (Fig 3). The cut surfaces were tan-colored and contained

focally necrotic areas and a cystic nodule. Histopathologically, the tumor was composed of proliferating epithelioid cells and myxoid cells with an interlacing bundle pattern (Fig. 4A & 4B). The cellularity was relatively high and the frequency of mitotic figures was 2 of 50 high power fields (HPF). The MIB-1 index was 4.4% (Fig. 4D). The tumor cells were diffusely immunoreactive for myeloid stem cell antigen (CD34), weakly or focally positive for c-kit proto-oncogene protein product (CD117) (Fig. 4C) and slightly positive for neuron-specific enolase (NSE). However, there was no staining for cytokeratin (CK), alpha-smooth muscle actin (SMA) or S-100 protein. Direct sequencing demonstrated mutations in the platelet-derived growth factor alpha (PDGFRA) gene exon 12, codon 561, encoding a thymine to adenine substitution (Fig. 5). These findings were consistent with a myxoid epithelioid GIST lacking myogenic features and neural attributes. The patient had a complete tumor resection and an uneventful postoperative course. He was treated by per os administration of Glevec® 300 mg/day as an adjuvant postoperative molecular targeting chemotherapy and has been living disease-free for 6 months.

Discussion

GISTs are mesenchymal tumors originating primarily from interstitial cells of Cajal or related stem cell-like precursors [3] of the gastrointestinal tract wall. Typically, they are characterized by the expression of the receptor tyrosine kinase Kit (CD117)[4], although some GISTs do not or only weakly express this marker [5]. Primary omental GISTs, Sakurai et al. implicated their possible pathogenesis from ICC-like Kit-positive cells existing in the normal

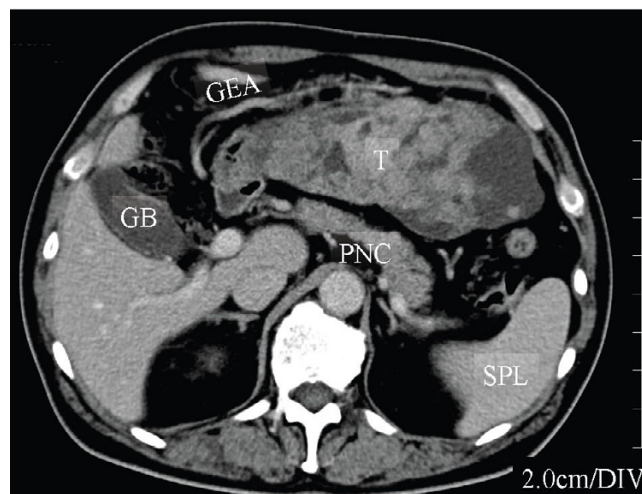


Figure 1
Computed Tomography. A huge tumor behind the left hepatic lobe showed heterogeneous low density with faint enhancement. GB, gallbladder; GEA, gastroepiploic artery; T, tumor; PNC, pancreas; SPL, spleen.

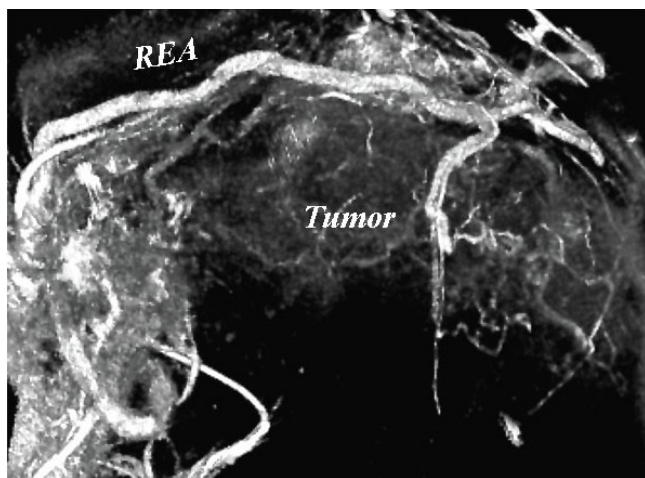


Figure 2
3-D reconstructed angiography of the gastroepiploic artery. A major tumor-supply artery diverges from the right gastroepiploic artery (REA).

omentum [6]. It is commonly accepted that mutually exclusive mutations in Kit or PDGFRA receptor tyrosine kinase proteins play a central role in GIST pathogenesis [7-10]. This is clearly illustrated by the collected data from primary omental GISTs (Table 2). Mutually exclusive gain-of-function Kit or PDGFRA mutations represent in-frame deletions, point mutations, duplications or insertions. Mutations in the Kit juxtamembrane domain (exon 11) are the most common in GISTs of all sites, whereas a rare Kit extracellular domain (exon 9) Ala502-Tyr503 duplication is specific for intestinal GISTs. Mutations in PDGFRA have been identified in the juxtamembrane (exon 12), as observed in our case, and tyrosine kinase domains (exons 14 and 18), nearly exclusively in gastric GISTs, mostly epithelioid variants. Some Kit and PDGFRA mutations carry prognostic value. The Kit/PDGFRA tyrosine kinase inhibitor Imatinib has been successfully used in the treatment of metastatic GISTs for more than 5 years [10,11]. Microscopic features are site-dependent and the majority (more than 85%) appears as spindle cell tumors [11,12]. However, only half of our collected omental GISTs appeared to be spindle cell tumors, the remaining being epithelioid and myxoid (Table 1). No correlation between prognosis and histologic type has been reported. On the other hand, it is well known that tumor size and mitotic activity are the best prognostic features [10]. In our case, the tumor size and the mitotic activity expressed per 50 HPFs were 20 cm and 2, respectively. It is hardly predict accurately the risk for disease progression and malignant potential of our case, because of scarcity of the primary omental GIST. Based on the criteria advocated by Miettinen and Lasota, these two tumor parameters place the tumor in group 3b, at the intermediate risk [10],

although according to the risk assessment proposed by Fletcher, et al., our patient displayed high-risk feature (tumor size above 10 cm, irrespective of low number of mitoses) [13].

Because of possible relapse even after complete resection of omental GISTs [14, 15, 16] and the objective response rate of 67 % of Imatinib to the mutation in PDGFRA exon 12 [11], our patient received daily oral administration of 300 mg Glevec[®], (we applied 15% reduced dose, referring to a report by Cormier, et al. after took account of a smaller average of Japanese build than American) [14, 16]. At the present time, there are no signs of toxicity and no evidence of relapse. However, because of the short follow-up period and rarity of the primary omental GISTs, it is difficult to assess appropriately their malignant potential, efficacy of different treatment procedures and their overall prognosis. In order to improve overall understanding of the primary omental GISTs, it is useful to analyze the collected detailed data from reported cases.

Conclusion

Our case demonstrated a weak immunohistochemical expression of c-kit (CD117) and a point mutation in PDGFRA exon 12 resulting in an Asp for Val⁵⁶¹ substitution. Because of the rarity of primary omental GISTs, it is difficult to assess their malignant potential and their overall prognosis. Imatinib therapy as an adjuvant to complete resection has been carried out safely and may prevent relapse to prolong long-term survival. It is essential to analyze accumulating data from case reports for a better and more detailed understanding of primary omental GISTs.

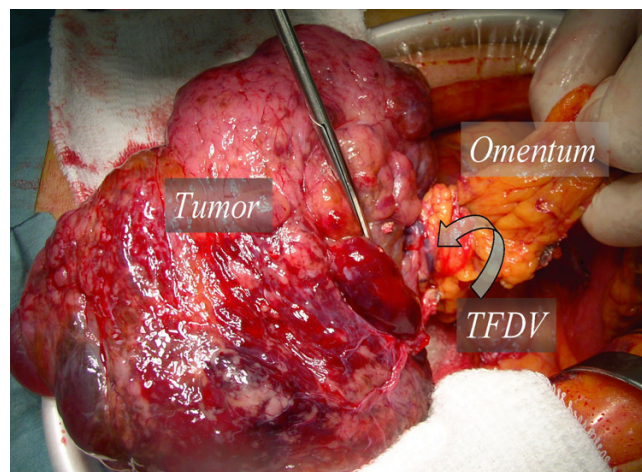


Figure 3
Intra-operative photograph. Scissors indicate major tumor-feeding vessels (TFDV).

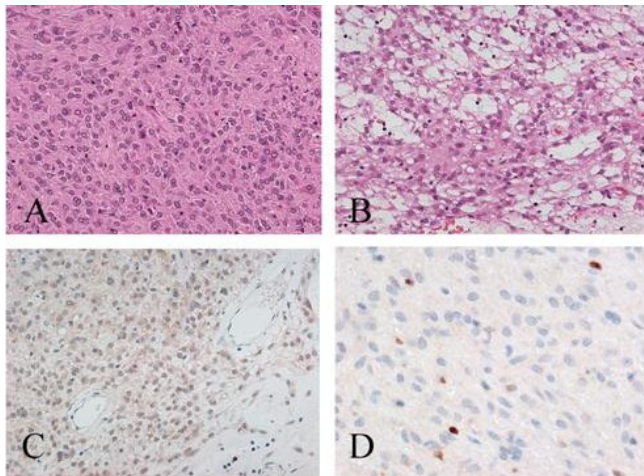


Figure 4
Photomicrographs of the primary omental GIST tumor. A. Epithelioid components of GIST. Tumor cells show eosinophilic cytoplasm and peripherally placed nuclei, and are mostly cohesive (H&E). B. Some components show a spindle cell pattern with myxoid stroma (H&E). C. Tumor cells weakly immunoreactive for c-kit (CD117). D. Immunostaining for MIB-1: sparse of positive tumor cells are shown (MIB-1 index: 4.4%).

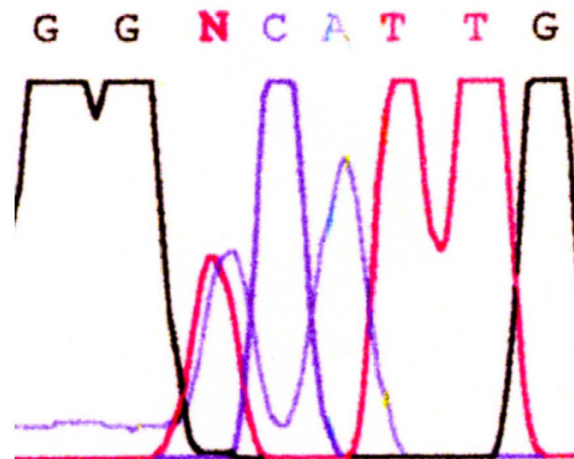


Figure 5
Genomic sequencing of the PDGFRA gene. Direct sequencing analysis showing a point mutation at codon 561 (GTC to GAC) in exon 12. Val561 is changed to Asp.

Table 1: Case review of the primary omental GISTs

Case No.	Authors (Year)	Age/Gender	Size (cm)	Histology	Mitosis/50HPF	Outcome
1	Takahashi [17] (1998)	71/M	17	Sp	1-3	ANED, 2-Mo
2	Miettinen [18] (1999)	58/F	2.5	Ep	1	Dead of colon cancer, 2.3-Yrs
3		89/M	2.5	Mixed	7	DUC, 3-Yrs
4		31/F	7.5	Sp	19	ANED, 3.5-Yrs
5		80/F	10	Ep	7	ANED, 2.0-Yrs
6		44/M	12	Ep	<1	ANED, 1.6-Yrs
7		72/M	15	Mixed	26	ANED, 1.5-Yrs
8		67/F	16.5	Sp	5	LTF
9		56/F	20	Ep	0	LTF
10		64/M	20	Sp	4	ANED, 2.0-Yrs
11		34/M	23	Sp	1	LTF
12		60/M	24	Ep	1	ANED, 3.4-Yrs
13		68/F	26	Sp	2	ANED, 8.5-Yrs
14		70/F	36	Ep	<1	LTF
15	Sakurai [6] (2001)	39/F	6	Sp	7.7**	NA
16		52/F	11.5	Sp	4.3**	NA
17		74/F	8	Sp	<1**	NA
18		65/F	16	Sp	0.9**	NA
19		61/F	23	Sp	22**	NA
20	Fukuda [19] (2001)	45/M	4.5	Sp	<1*	ANED, 0.9-Yrs
21	Suzuki [15] (2003)	65/M	13	Sp	5-8 13.8*	DOD 1.3-Yrs (Liver mets.)
22	Sakurai [8] (2004)	73/F	4	Myxoid	3*	ANED, 4-Mo
23		52/M	>20	Ep	4*	ANED, 13-Mo
24	Yamamoto [9](2004)	62/F	11	Ep	3	ANED, 0.5-Yrs
25		54//M	15	Ep	3	ANED, 5.2-Yrs
26		49/F	17	Ep	1	ANED, 4.0-Yrs
27	Caricato [20] (2005)	84/F	≤5	Sp	NA	ANED, 0.3-Yrs
28	Present case (2006)	65/M	20	Myxoid	2	ANED, 0.5-Yrs

Ep: epithelioid, SP: spindle, ANED: alive with no evident disease, Mo: month, Yrs: years, DUC: Dead of unknown cause, *: MIB-1-labeling index. **: K-67 labeling index (%), LFT: lost to follow-up, NA: not available, DOD: dead of disease,

Table 2: Immunohistochemistry and Mutations in the primary omental GISTs

Case No.	Histology	Immunohistochemistry						Mutations	
		KIT	CD34	S100	SMA	Desmin	Gene	Site	
15	Spindle	Positive	+	-	-	-	C-kit	Exon 11, MS	
16	Spindle	Positive	+	-	-	-	C-kit	Exon 11, IFD	
17	Spindle	Positive	+	-	-	-	C-kit	Exon 11, MS	
18	Spindle	Positive	+	-	-	-	C-kit	Exon 11, MS	
19	Spindle	Positive	+	-	Weak	-	C-kit	Exon 11, IFD	
22	Myxoid epithelioid	Weak	+	-	+	-	PDGFRA	Exon 18 del D842V	
23	Epithelioid	Weak	-	-	-	-	PDGFRA	Exon 18 DIMH842-845	
26	Epithelioid	Weak	+	NA	NA	NA	PDGFRA	Exon 18	
28	Myxoid epithelioid	Weak	+	-	-	-	PDGFRA	Exon 12, V561D	

MS: miss sense, IFD: in-frame deletion, NA: not available

Competing interests

The author(s) declare that they have no competing interests.

Authors' contributions

TS, SS and AS had contributed as molecular tumor pathologist. TS, KF, SY, RM and TM contributed as a gastrointestinal surgeon in operative performance and postoperative treatment. NH and YT contributed as gastroenterologist and diagnostic radiologist.

All authors read and approved the final manuscript.

Acknowledgements

Written consent was obtained from the patient for publication of this case report.

References

- Miettinen M, Lasota J: **Gastrointestinal stromal tumors (GISTs): definition, occurrence, pathology, differential diagnosis and molecular genetics.** *Pol J Pathol* 2003, **54**(1):3-24.
- Reith JD, Goldblum JR, Lyles RH, Weiss SW: **Extragastrointestinal (soft tissue) stromal tumors: an analysis of 48 cases with emphasis on histologic predictors of outcome.** *Mod Pathol* 2000, **13**(5):577-585.
- Kindblom LG, Remotti HE, Aldenborg F, Meis-Kindblom JM: **Gastrointestinal pacemaker cell tumor (GIPACT): gastrointestinal stromal tumors show phenotypic characteristics of the interstitial cells of Cajal.** *Am J Pathol* 1998, **152**(5):1259-1269.
- Hirota S, Isozaki K, Moriyama Y, Hashimoto K, Nishida T, Ishiguro S, Kawano K, Hanada M, Kurata A, Takeda M, Muhammad TG, Matsuzawa Y, Kanakura Y, Shinomura Y, Kitamura Y: **Gain-of-function mutations of c-kit in human gastrointestinal stromal tumors.** *Science* 1998, **279**(5350):577-580.
- Medeiros F, Corless CL, Duensing A, Hornick JL, Oliveira AM, Heinrich MC, Fletcher JA, Fletcher CD: **KIT-negative gastrointestinal stromal tumors: proof of concept and therapeutic implications.** *Am J Surg Pathol* 2004, **28**:889-894.
- Sakurai S, Hishima T, Takazawa Y, Sano T, Nakajima T, Saito K, Morinaga S, Fukayama M: **Gastrointestinal stromal tumors and KIT-positive mesenchymal cells in the omentum.** *Pathol Int* 2001, **51**:524-531.
- Hirota S, Ohashi A, Nishida T, Isozaki K, Kinoshita K, Shinomura Y, Kitamura Y: **Gain-of-function mutations of platelet-derived growth factor receptor alpha gene in gastrointestinal stromal tumors.** *Gastroenterology* 2003, **125**:660-667.
- Sakurai S, Hasegawa T, Sakuma Y, Takazawa Y, Motegi A, Nakajima T, Saito K, Fukayama M, Shimoda T: **Myxoid epithelioid gastrointestinal stromal tumor (GIST) with mast cell infiltrations: a subtype of GIST with mutations of platelet-derived growth factor receptor alpha gene.** *Hum Pathol* 2004, **35**(10):1223-1230.
- Yamamoto H, Oda Y, Kawaguchi K, Nakamura N, Takahira T, Tamiya S, Saito T, Oshiro Y, Ohta M, Yao T, Tsuneyoshi M: **c-kit and PDGFRA mutations in extragastrointestinal stromal tumor (gastrointestinal stromal tumor of the soft tissue).** *Am J Surg Pathol* 2004, **28**(4):479-488.
- Miettinen M, Lasota J: **Gastrointestinal stromal tumors: review on morphology, molecular pathology, prognosis, and differential diagnosis.** *Arch Pathol Lab Med* 2006, **130**(10):1466-1478.
- Blanke CD, Corless CL: **State-of-the art therapy for gastrointestinal stromal tumors.** *Cancer Invest* 2005, **23**(3):274-280.
- Agaimy A, Wunsch PH: **Gastrointestinal stromal tumours: a regular origin in the muscularis propria, but an extremely diverse gross presentation. A review of 200 cases to critically re-evaluate the concept of so-called extra-gastrointestinal stromal tumours.** *Langenbecks Arch Surg* 2006, **391**:322-329.
- Fletcher CD, Berman JJ, Corless C, Gorstein F, Lasota J, Longley BJ, Miettinen M, O'Leary TJ, Remotti H, Rubin BP, Shmookler B, Sobin LH, Weiss SW: **Diagnosis of gastrointestinal stromal tumors: A consensus approach.** *Hum Pathol* 2002, **33**(5):459-465.
- Cormie JN, Patel SR, Pisters PWT: **Gastrointestinal Stromal Tumors: Rationale for Surgical Adjuvant Trials with Imatinib.** *Current Oncology Reports* 2002, **4**:504-509.
- Suzuki K, Kaneko G, Kubota K, Horigome N, Hikita H, Senga O, Miyakawa M, Shimojo H, Uehara T, Itoh N: **Malignant tumor, of the gastrointestinal stromal tumor type, in the greater omentum.** *J Gastroenterol* 2003, **38**(10):985-988.
- Sturgeon C, Chejfec G, Espot NJ: **Gastrointestinal stromal tumors: a spectrum of disease.** *Surgical oncology* 2003, **12**:21-26.
- Takahashi T, Kuwao S, Yanagihara M, Kakita A: **A primary solitary tumor of the lesser omentum with immunohistochemical features of gastrointestinal stromal tumors.** *Am J Gastroenterol* 1998, **93**(11):2269-2273.
- Miettinen M, Monihan JM, Sarlomo-Rikala M, Kovatich AJ, Carr NJ, Emory TS, Sobin LH: **Gastrointestinal stromal tumors/smooth muscle tumors (GISTs) primary in the omentum and mesentery: clinicopathologic and immunohistochemical study of 26 cases.** *Am J Surg Pathol* 1999, **23**(9):1109-1118.
- Fukuda H, Suwa T, Kimura F, Sugiura T, Shinoda T, Kaneko K: **Gastrointestinal stromal tumor of the lesser omentum: report of a case.** *Surg Today* 2001, **31**(8):715-718.
- Caricato M, Ausania F, Valeri S, Rabitti C, Tonini G, Coppola R: **An omental mass: any hypothesis?** *Colorectal Dis* 2005, **7**(4):417-418.

Publish with **BioMed Central** and every scientist can read your work free of charge

"BioMed Central will be the most significant development for disseminating the results of biomedical research in our lifetime."

Sir Paul Nurse, Cancer Research UK

Your research papers will be:

- available free of charge to the entire biomedical community
- peer reviewed and published immediately upon acceptance
- cited in PubMed and archived on PubMed Central
- yours — you keep the copyright

Submit your manuscript here:
http://www.biomedcentral.com/info/publishing_adv.asp

