

Phosphoinositide 3-Kinase γ Controls the Intracellular Localization of CpG to Limit DNA-PKcs-Dependent IL-10 Production in Macrophages

Kaoru Hazeki^{1*}, Yukiko Kametani¹, Hiroki Murakami¹, Masami Uehara¹, Yuki Ishikawa¹, Kiyomi Nigorikawa¹, Shunsuke Takasuga², Takehiko Sasaki², Tsukasa Seya³, Misako Matsumoto³, Osamu Hazeki¹

1 Division of Molecular Medical Science, Graduate School of Biomedical Sciences, Hiroshima University, Hiroshima, Japan, **2** Department of Pathology and Immunology, Akita University School of Medicine, Akita, Japan, **3** Department of Microbiology and Immunology, Hokkaido University Graduate School of Medicine, Sapporo, Japan

Abstract

Synthetic oligodeoxynucleotides containing unmethylated CpG motifs (CpG) stimulate innate immune responses. Phosphoinositide 3-kinase (PI3K) has been implicated in CpG-induced immune activation; however, its precise role has not yet been clarified. CpG-induced production of IL-10 was dramatically increased in macrophages deficient in PI3K γ (p110 $\gamma^{-/-}$). By contrast, LPS-induced production of IL-10 was unchanged in the cells. CpG-induced, but not LPS-induced, IL-10 production was almost completely abolished in SCID mice having mutations in DNA-dependent protein kinase catalytic subunit (DNA-PKcs). Furthermore, wortmannin, an inhibitor of DNA-PKcs, completely inhibited CpG-induced IL-10 production, both in wild type and p110 $\gamma^{-/-}$ cells. Microscopic analyses revealed that CpG preferentially localized with DNA-PKcs in p110 $\gamma^{-/-}$ cells than in wild type cells. In addition, CpG was preferentially co-localized with the acidic lysosomal marker, LysoTracker, in p110 $\gamma^{-/-}$ cells, and with an early endosome marker, EEA1, in wild type cells. Over-expression of p110 γ in Cos7 cells resulted in decreased acidification of CpG containing endosome. A similar effect was reproduced using kinase-dead mutants, but not with a ras-binding site mutant, of p110 γ . Thus, it is likely that p110 γ , in a manner independent of its kinase activity, inhibits the acidification of CpG-containing endosomes. It is considered that increased acidification of CpG-containing endosomes in p110 $\gamma^{-/-}$ cells enforces endosomal escape of CpG, which results in increased association of CpG with DNA-PKcs to up-regulate IL-10 production in macrophages.

Citation: Hazeki K, Kametani Y, Murakami H, Uehara M, Ishikawa Y, et al. (2011) Phosphoinositide 3-Kinase γ Controls the Intracellular Localization of CpG to Limit DNA-PKcs-Dependent IL-10 Production in Macrophages. PLoS ONE 6(10): e26836. doi:10.1371/journal.pone.0026836

Editor: Jianming Qiu, University of Kansas Medical Center, United States of America

Received: July 7, 2011; **Accepted:** October 4, 2011; **Published:** October 28, 2011

Copyright: © 2011 Hazeki et al. This is an open-access article distributed under the terms of the Creative Commons Attribution License, which permits unrestricted use, distribution, and reproduction in any medium, provided the original author and source are credited.

Funding: This work was supported by Grant-in-Aid for Scientific Research (C), KAKENHI20590060, 22590065 and 23590078, and Grant-in-Aid for Scientific Research on Innovative Areas, KAKENHI22114008. The funders had no role in study design, data collection and analysis, decision to publish, or preparation of the manuscript.

Competing Interests: The authors have declared that no competing interests exist.

* E-mail: khazeki@hiroshima-u.ac.jp

Introduction

Oligodeoxynucleotides containing unmethylated CpG motifs (CpG) are powerful immune adjuvants that induce the production of cytokines, including IL-6, IL-10, IL-12, IFN- α/β , and TNF- α [1,2]. Although previous studies have established that CpG-induced immune responses are mediated by endosomal TLR9 [3–5], cytoplasmic DNA-PKcs are also involved in CpG-signaling independent of TLR9 [6,7]. Thus, intracellular trafficking of CpG is critical to select downstream signaling molecules, which determine the cytokine species produced by macrophages [7,8].

Phosphoinositide 3-kinase (PI3K) has been reported to be both a positive and negative regulator of CpG-mediated cytokine production. CpG-induced IL-12 production is increased in plasmacytoid dendritic cells (pDC) from p85 $\alpha^{-/-}$ mice, and by treatment of wild-type pDC with wortmannin [9]. Likewise, CpG-induced iNOS expression is increased by treating RAW264.7 cells with wortmannin [10]. By contrast, another group has reported that wortmannin inhibits CpG-induced production of IL-12, IL-6,

TNF- α , and NO from RAW264.7 cells [11]. This inhibition has been considered to be the result of wortmannin-mediated disruption of class III PI3K signaling, which is responsible for CpG uptake [11]. Similarly, wortmannin inhibits CpG-induced IL-12 production by inhibiting CpG internalization in mouse-derived bone marrow cells [12]. In human pDC, another PI3K inhibitor, LY294002, also inhibits CpG-induced type I IFN production [13]. In this case, the uptake and endosomal trafficking of CpG are not affected, but nuclear translocation of IRF-7 was inhibited by LY294002, and also, by a specific inhibitor of PI3K δ , IC87114 [13]. In addition, the PI3K/mTOR/p70S6K pathway plays a substantial role in the spatial interaction of TLR9/MyD88/IRF7, which is indispensable for the induction of type I IFN production by pDC [14]. These reports have indicated that PI3Ks play some roles in trafficking of CpG itself or its downstream molecules.

Pan- and/or some other specific PI3K inhibitors were used in all of the previous studies described above. All of these inhibitors bind competitively to the ATP binding pocket of PI3Ks and block kinase activity. Since DNA-dependent protein kinase catalytic

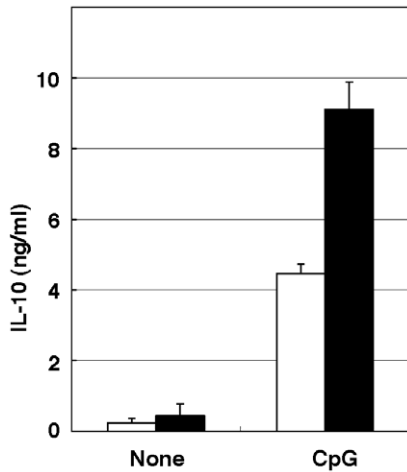


Figure 1. Increased IL-10 production following CpG stimulation of p110 γ ^{-/-} cells. Macrophages from wild type (open bar) or p110 γ ^{-/-} mice (solid bar) were incubated in 24-well plates with 10 ng/mL LPS, 200 ng/mL CpG, 50 μ g/mL poly:I:C or 200 nM Malp2 for 18 h. The amount of IL-10 in the medium was determined by ELISA. The values are the means \pm SD of duplicate cultures from three independent experiments.
doi:10.1371/journal.pone.0026836.g001

subunit (DNA-PKcs) shares similar ATP binding site as a member of the PI3K-like kinase family, these inhibitors, even isoform-specific inhibitors, more or less inhibit DNA-PKcs [15]. This makes it difficult to elucidate the precise role of DNA-PKcs

and PI3Ks in CpG-mediated cytokine production. In this paper, we used class IB PI3K (p110 γ) knockout mice and SCID mice having mutations in DNA-PKcs to estimate their roles in CpG-mediated cytokine production. In agreement with a current report, DNA-PKcs play a substantial role in CpG-mediated IL-10 production in macrophages [7]. By contrast, p110 γ specifically down-regulates IL-10 production following CpG-stimulation. Quantitative analysis of microscopic images showed that CpG localized preferentially with DNA-PKcs in the cytosol in p110 γ ^{-/-} cells to a greater extent than in wild-type cells. We propose a novel regulatory role of p110 γ in CpG-induced production of IL-10 through modulation of the intracellular trafficking of CpG.

Results

p110 γ deficiency specifically increased IL-10 production upon CpG stimulation in macrophages

Mouse macrophages generated IL-10 in response to CpG (Fig. 1). Since PI3K has been implicated in the regulation of TLR-induced IL-10 production [16], we tested the effect of p110 γ depletion on IL-10 production. CpG-induced IL-10 production was dramatically increased in macrophages from p110 γ ^{-/-} mouse (Fig. 1). Although IL-10 production sometimes varied extremely between experiments, IL-10 production in wild type mice was always approximately half of that in p110 γ ^{-/-} mice in each paired experiment. We also tested the cytokine production using macrophages from p85 α ^{-/-} mice, and from p110 δ ^{KD/KD} mice; neither displayed CpG-specific changes in IL-10 production similar to what was seen with p110 γ ^{-/-} cells (data not shown).

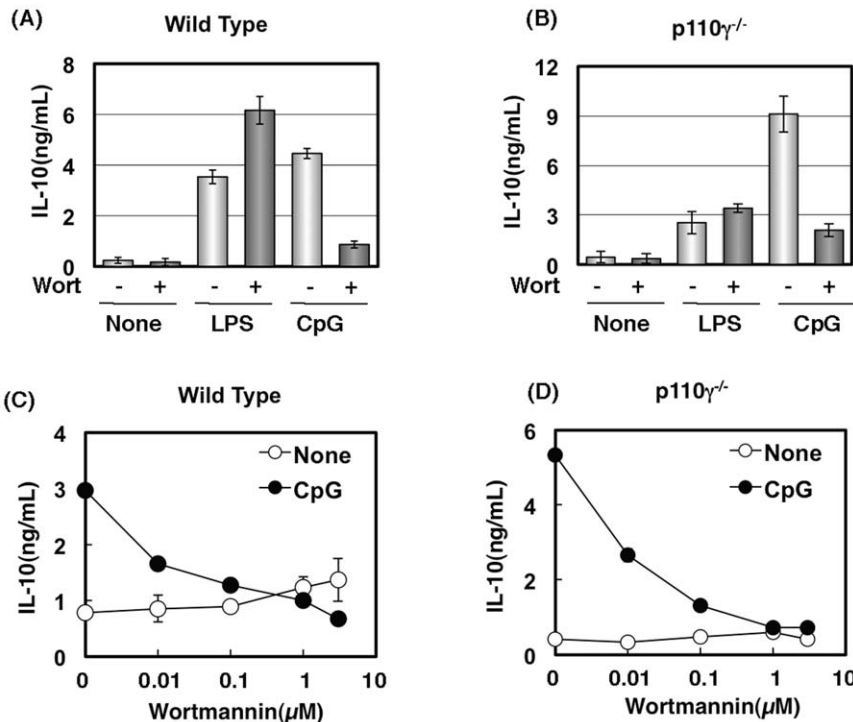


Figure 2. Inhibition of CpG-induced IL-10 production by wortmannin. Macrophages from wild type (A, C) or p110 γ ^{-/-} mice (B, D) were pre-incubated with 0.1 μ M (+ in A, B), or increasing concentration of wortmannin (C, D) for 15 min, followed by the addition of 10 ng/mL LPS (A, B) or 200 ng/mL CpG (A–D), for 18 h. The amount of IL-10 in the medium was determined by ELISA. The values are the means \pm SD of duplicate cultures from three independent experiments.
doi:10.1371/journal.pone.0026836.g002

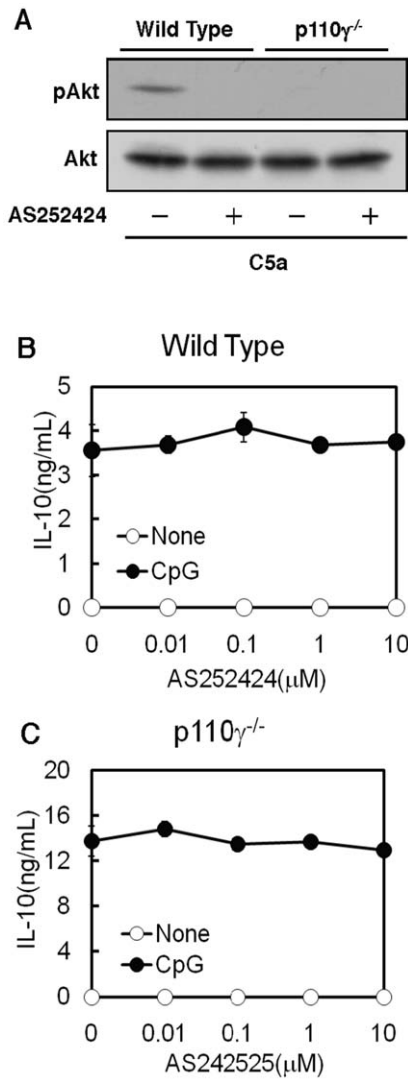


Figure 3. Irrelevance of the kinase activity of p110 γ in the regulation of IL-10 production. (A) Macrophages from wild type or p110 γ ^{-/-} mice were pre-incubated with 10 μ M AS252424 for 15 min, followed by the addition of 100 ng/mL C5a for 5 min. Total cell lysates from the treated cells were analyzed by Western blot. (B and C) Macrophages from wild type (B) or p110 γ ^{-/-} mice (C) were pre-incubated with increasing concentrations of AS252424 for 15 min, followed by the addition of 200 ng/mL CpG for 18 h. The amount of IL-10 in the medium was determined by ELISA. The values are the means \pm SD of duplicate cultures from three independent experiments. doi:10.1371/journal.pone.0026836.g003

Wortmannin inhibited IL-10 production induced by CpG, but increased that induced by LPS

Macrophages were treated with a pan-PI3K inhibitor, wortmannin. CpG-induced IL-10 production was almost completely inhibited by wortmannin while LPS-induced IL-10 production was rather increased in wild type cells (Fig. 2A). The effect of wortmannin on LPS-induced IL-10 production may be the result of the inhibition of p110 γ , because the augmentation was not observed in p110 γ ^{-/-} cells (Fig. 2B). However, wortmannin inhibited severely CpG-induced IL-10 production in p110 γ ^{-/-} cells, as well as in wild type cells (Fig. 2C, D). The inhibition by wortmannin was specific to IL-10 production, because IL-12 production was unchanged by the treatment (data not shown).

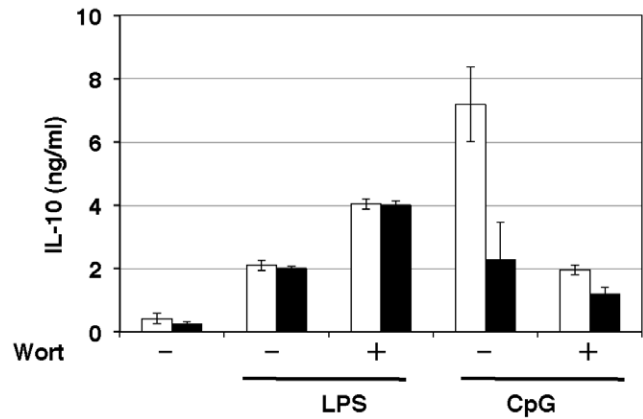


Figure 4. Failure of CpG to stimulate IL-10 production in SCID mice. Macrophages from wild type (open bar) or SCID (solid bar) mice were preincubated with 0.1 μ M wortmannin (+) or vehicle (-) for 15 min, followed by the addition of 10 ng/mL LPS or 200 ng/mL CpG, for 18 h. The amount of IL-10 in the medium was determined by ELISA. The values are the means \pm SD of duplicate cultures from three independent experiments. doi:10.1371/journal.pone.0026836.g004

These data indicate that the target molecule of wortmannin responsible for the suppression of CpG-induced IL-10 was not p110 γ .

p110 γ -mediated negative regulation of IL-10 production was independent of kinase activity

Since a pan-PI3K inhibitor, wortmannin, did not mimic the effect of p110 γ deficiency on CpG-induced IL-10 production, we next tested the effect of the p110 γ -specific inhibitor, AS252424, on CpG-induced IL-10 production. C5a-induced Akt phosphorylation was completely abolished in p110 γ ^{-/-} cells (Fig. 3A) [17]. The result confirmed that the C5a action is dependent on p110 γ . AS252424 inhibited the C5a-induced Akt phosphorylation (Fig. 3A), indicating that the compound is a powerful tool for investigating the role of p110 γ . Surprisingly, AS252424 did not cause an increase in CpG-induced IL-10 production in the wild type cells nor in p110 γ ^{-/-} cells (Fig. 2B, C). These data suggest that the negative regulation of CpG-induced IL-10 production by p110 γ was not dependent on its kinase activity.

CpG-induced IL-10 production was abolished in SCID mice

Recently, an indispensable role of DNA-PKcs in CpG-induced IL-10 production has been reported [7]. Since DNA-PKcs has a PI3K-like catalytic domain, the kinase activity is susceptible to wortmannin. As reported earlier [7], CpG-induced IL-10 production was defective in SCID mice (Fig. 4). Additionally, wortmannin inhibited significantly CpG-induced IL-10 production in wild type, whereas it did not affect this process in SCID mice (Fig. 4). This result suggests that wortmannin suppressed CpG-induced IL-10 production through inhibition of DNA-PKcs. By contrast, LPS-induced IL-10 production in SCID was identical to wild type with the same background mice (Fig. 4).

Co-localization of DNA-PKcs and CpG was increased in p110 γ ^{-/-} cells

CpG is internalized via endocytosis and immediately moves into the lysosomal compartment [5,18,19]. A recent study reported that endosomal CpG preferentially induces IL-12 production, but,

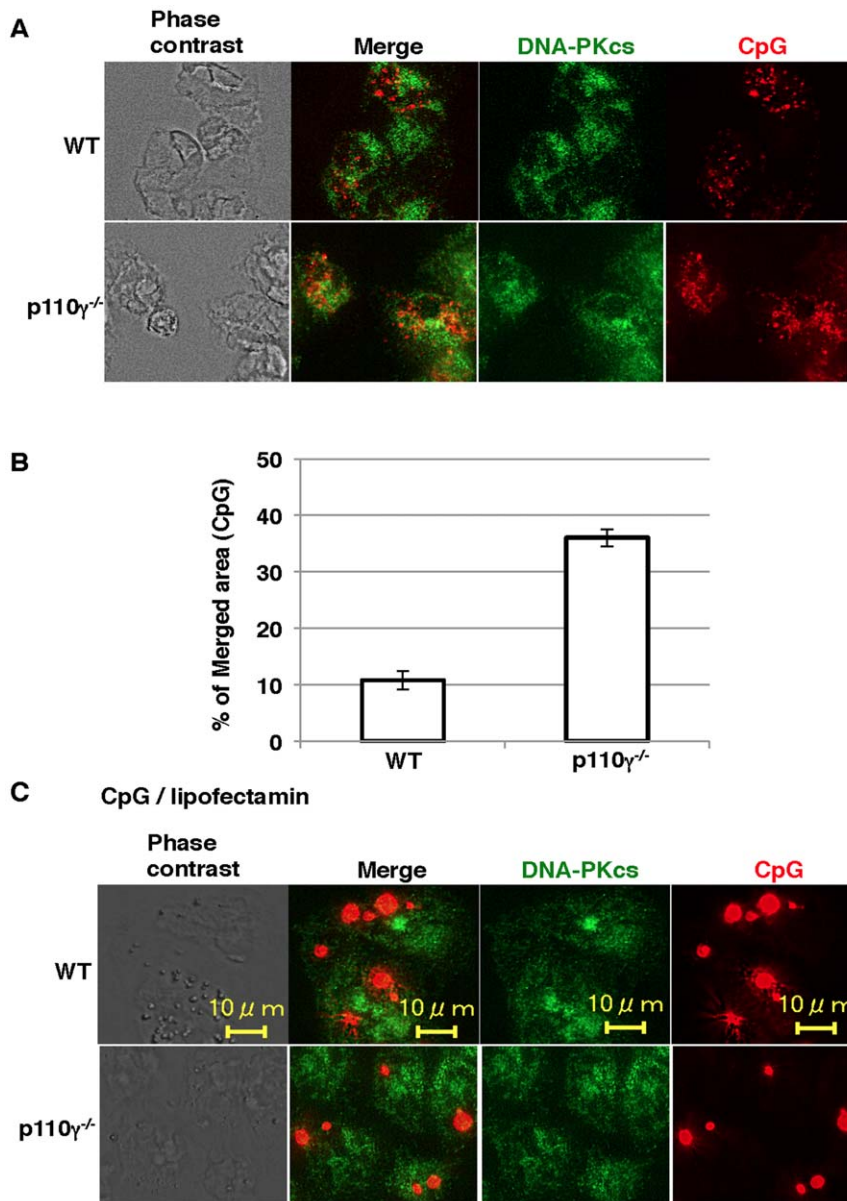


Figure 5. Increased co-localization of CpG and DNA-PKcs in p110 $\gamma^{-/-}$ cells. Macrophages from wild type or p110 $\gamma^{-/-}$ mice were incubated with 0.5 μ M rhodamine-CpG (A) or rhodamine-CpG/lipofectamine LTX/Plus (C) for 60 min. The cells were washed, fixed, permeabilized, and stained with anti-DNA-PKcs antibody and Alexa 488-labeled secondary antibody. (B) The imaging data in (A) were quantified and shown as means \pm SD. doi:10.1371/journal.pone.0026836.g005

when released from the endosome, it associates with DNA-PKcs in cytoplasm and induces a greater amount of IL-10 [7]. Therefore, we hypothesized that CpG localized to the endosomal compartment in the wild type cells, and was more efficiently released into the cytosol in p110 $\gamma^{-/-}$ cells. To quantify the co-localization of CpG and DNA-PKcs, macrophages were incubated with rhodamine-labeled CpG, fixed with formaldehyde, permeabilized, and incubated with anti-DNA-PKcs antibody. The merged area was calculated from the imaging data as described under materials and methods. The Co-localization area of CpG and DNA-PKcs was significantly increased in p110 $\gamma^{-/-}$ cells (Fig. 5A, B). Interestingly, CpG complexed with cationic liposomes composed of Lipofectamine (LTX) and Plus reagent localized in large vesicles both in wild type and p110 $\gamma^{-/-}$ cells, and scarcely co-localized with DNA-PKcs (Fig. 5C). Since wortmannin did not affect CpG

uptake or localization of CpG or DNA-PKcs (data not shown), the PI3K inhibitor exclusively inhibits the kinase activity of DNA-PKcs.

Manipulation of CpG localization with cationic liposomes abolished the effect of p110 γ deficiency on cytokine production

It seemed interesting to determine IL-10 production by CpG complexed with the lipofection reagent, which hardly co-localizes with DNA-PKcs. When cells were stimulated with this CpG/lipofection reagent, IL-10 production was decreased both in wild-type and p110 $\gamma^{-/-}$ cells (Fig. 6). In addition, the augmentation of IL-10 production seen in p110 $\gamma^{-/-}$ cells was completely abolished using this delivery system (Fig. 6).

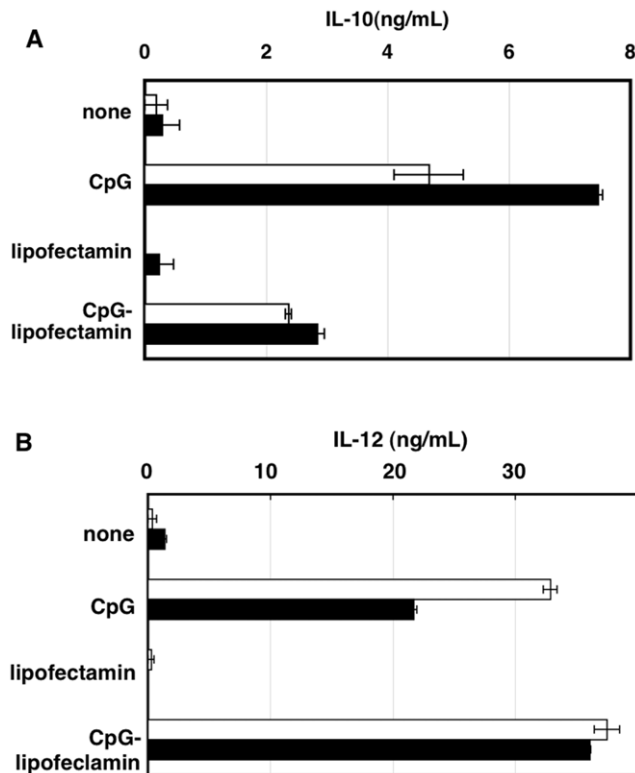


Figure 6. The effect of lipofection reagent on CpG-induced cytokine production. Macrophages from wild type (open bar) or p110 γ ^{-/-} mice (solid bar) were incubated in 24-well plates with 200 ng/mL CpG or CpG/lipofectamine LTX/Plus reagent complex for 18 h. The amount of IL-10 (A) and IL-12 (B) in the medium was determined by ELISA. The values are the means \pm SD of duplicate cultures from three independent experiments. doi:10.1371/journal.pone.0026836.g006

CpG preferentially localized in the early endosome in wild type cells, and in lysosomes in p110 γ ^{-/-} cells

We next tested the cellular delivery of CpG using an early endosome marker, EEA1, an endosome marker, dextran, and an acidic lysosome marker, LysoTracker. Quantitative analysis of microscopic images showed that more CpG merged with EEA1 and dextran in wild type cells than in p110 γ ^{-/-} cells (Fig. 7A, B, D, E). By contrast, CpG preferentially merged with LysoTracker in p110 γ ^{-/-} cells more than in wild-type cells (Fig. 7C, F). To further investigate the role of p110 γ in CpG localization, Cos7 cells were transfected with p110 γ and its mutant forms (unlike macrophages, Cos7 cells do not express p110 γ). As shown in Fig. 8, most of the CpG was co-localized with LysoTracker in Cos7 cells transfected with vehicle alone, while scarcely co-localized with LysoTracker in the cells transfected with wild type p110 γ . Interestingly, overexpression of a kinase-dead mutant of p110 γ also inhibited the acidification of CpG-containing endosome. By contrast, the Ras-binding domain mutant form showed no effect on the CpG localization. These results suggest that PI3K p110 γ play a role in endosomal acidification independent of its kinase activity. Since endosomal acidification is known to precede the endosomal leakage, acidification of CpG containing endosome may accelerate CpG translocation to the cytosol and the resultant association with DNA-PKcs to increase IL-10 production in macrophages.

CpG-induced but not LPS-induced IL-10 production was suppressed by inhibitors of endosomal acidification

Effect of chemical inhibitors of endosomal acidification [20] on CpG-induced IL-10 production was next examined. Both NH₄Cl and chloroquine strongly inhibited CpG-induced IL-10 production without affecting LPS-induced one (Fig. 9). The result supported our hypothesis that endosomal acidification is required for CpG-induced IL-10 production.

Discussion

In this study, we have identified a novel function of PI3K p110 γ in the regulation of CpG localization. We have demonstrated this function using p110 γ ^{-/-} macrophages and Cos7 cells transfected with p110 γ . In macrophages, more CpG merged with the endosome markers, EEA1 and dextran, in wild type cells than in p110 γ ^{-/-} cells, whereas preferentially merged with the acidic lysosome marker, LysoTracker, in p110 γ ^{-/-} cells to a greater extent than in wild-type cells. In Cos7 cells, which do not express p110 γ , most of the CpG was co-localized with LysoTracker, and scarcely co-localized with the dye in the cells transfected with p110 γ . Another novel finding reported in this paper is that IL-10 production was increased specifically in p110 γ ^{-/-} cells following CpG-stimulation. In p110 γ ^{-/-} cells, the increased acidification of CpG containing endosomes and the resultant leakage of CpG to the cytosol, where DNA-PKcs resides, appears to be responsible for the modulation of cytokine production. For this reason, CpG-induced, but not LPS-induced, IL-10 production was almost completely abolished in SCID mice having mutations in DNA-PKcs. Furthermore, wortmannin, an inhibitor of DNA-PKcs, inhibited completely CpG-induced IL-10 production both in wild-type and in p110 γ ^{-/-} cells. In addition to these, manipulation of the delivery system with cationic liposomes, which severely blocked the cytosolic delivery of CpG both in p110 γ ^{-/-} and wild type cells, resulted in decreased IL-10 production. Finally, an intriguing point in this study is that the actions of p110 γ on both the CpG delivery system and cytokine production were independent of its kinase activity.

Several kinase-independent functions of p110 γ have been reported previously. Protein complexes containing p110 γ are known to activate phosphodiesterase (PDE3B) in cardiomyocytes to degrade cAMP in a manner independent of its kinase activity [21,22]. Since increases in the cAMP level results in augmentation of TLR-mediated IL-12 production, with a decrease in IL-10 production [23], we had hypothesized that the increased IL-10 production in the absence of p110 γ might be the result of elevated cAMP levels. To answer this question we tested some reagents known to increase cAMP, such as forskolin, prostaglandin E₂, 3-isobutyl-1-methylxanthin or dibutyryl cAMP in IL-10 production. Although these reagents more or less enhanced IL-10 production, the effect was not specific to CpG stimulation, but rather, was commonly observed in TLR-stimulation (data not shown). The other kinase-independent functions of p110 γ are reported in vascular repair and platelet aggregation [22]. In addition, wild-type or the kinase-dead mutant of p110 γ can block the growth of human colon cancer cells [24]. Although the mechanism of these kinase-independent actions of p110 γ remains to be clarified, a scaffolding role for p110 γ has been suggested [22].

p110 γ ^{-/-} mice show severe defects in immune responses, and are protected completely against systemic anaphylaxis [25–28]. Additionally, in models of rheumatoid arthritis, systemic lupus erythematosus, and atherosclerosis, loss of p110 γ activity results in protection against disease progression [29–31]. Since IL-10 is an anti-inflammatory cytokine, the increased IL-10 production in

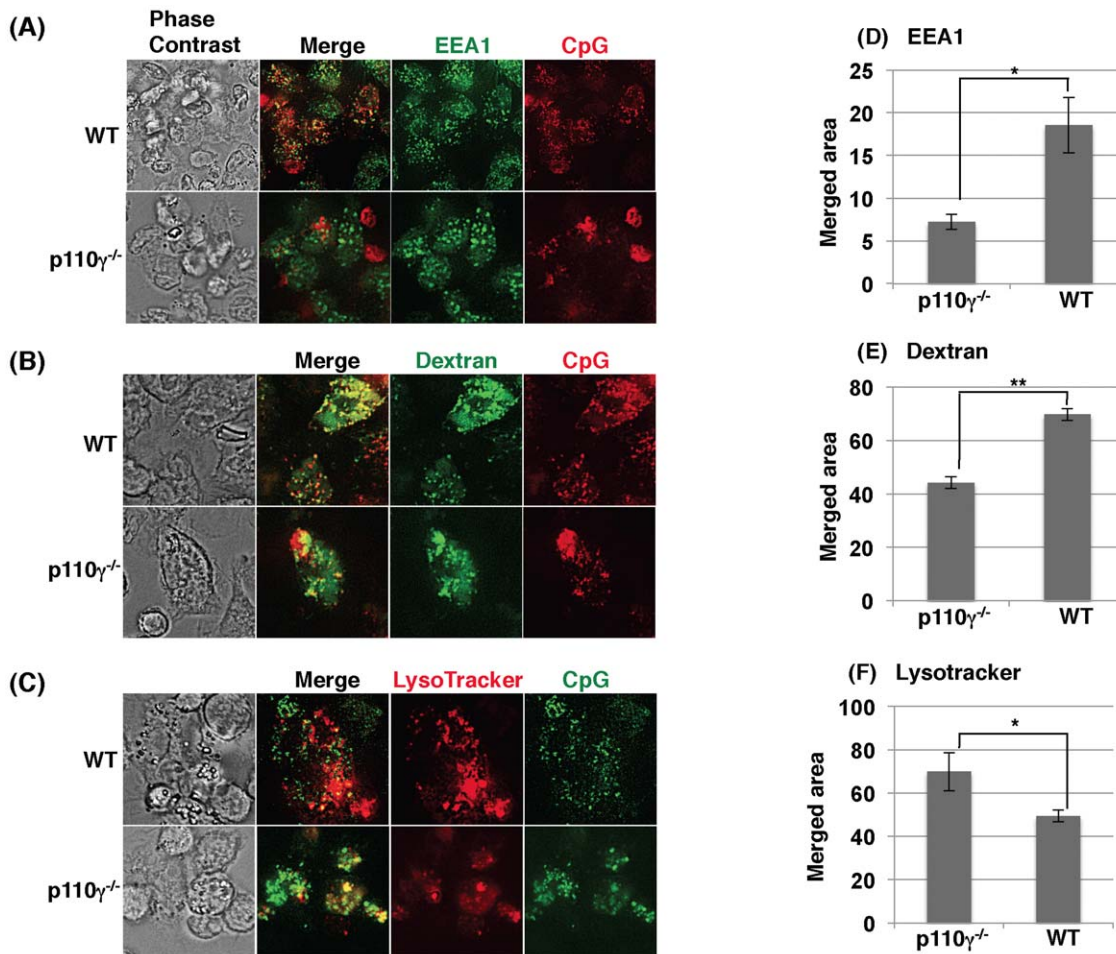


Figure 7. CpG localization in macrophages from wild type and p110 $\gamma^{-/-}$ mice. Macrophages from wild type or p110 $\gamma^{-/-}$ mice were incubated with 0.5 μ M rhodamine-CpG (A, B) or FITC-CpG (C) for 30 min. FITC-dextran (1 mg/ml) (B) or LysoTracker red (50 nM) (C) was added simultaneously with CpG. The cells were washed and observed as live cells (B and C). In (A), the cells were fixed, permeabilized and stained with anti-EEA1 antibody and Alexa 488-labeled secondary antibody. The imaging data in (A, B, C) were quantified and shown as means \pm SD in (D, E, F). *, $p < 0.05$, **, $p < 0.01$. doi:10.1371/journal.pone.0026836.g007

p110 γ -deficient cells may contribute, at least in a part, to protection against excessive inflammation. It is also likely that the increased IL-10 and decreased IL-12 production in p110 $\gamma^{-/-}$ macrophage might explain partly the development of colorectal carcinomas in p110 $\gamma^{-/-}$ mice [24], because the IL-12-mediated Th1 response favors effective anti-tumor immune responses [32]. Although further studies are needed to confirm the *in vivo* effect of p110 γ on the translocation of CpG, our findings suggest that when p110 γ is considered as a drug target for immune diseases [15,33,34], not only its lipid kinase function, but also its kinase-independent function should be considered.

Materials and Methods

Reagents

LPS (*E. coli* serotype 0111: B4), FITC-Dextran (average MW 40 kD) and C5a were from Sigma-Aldrich. Wortmannin was from Kyowa Medex (Tokyo, Japan). 5'-rhodamine-labeled, 5'-FITC-labeled and unlabeled CpG DNA (HPLC-purified phosphorothioate with the sequence of TCC ATG ACG TTC CTG ATG CT) were synthesized by Hokkaido System Science (Sapporo, Japan). LysoTracker Red was obtained from Lonza. Lipofectamine LTX

Reagent, Plus Reagent and RPMI 1640 medium were from Invitrogen. The Protein Assay Kit was purchased from Bio-Rad. AS-252424 was from Cayman. Anti-pAkt (Ser473) antibody was from Cell Signalling, anti-Akt1/2 and anti-DNA-PKcs antibodies were from Santa Cruz, and anti-EEA1 was from GenScript. The IL-10 ELISA assay kit was from Biolegend.

Animals and cell isolation

All animal experiments were carried out in accordance with the NIH Guide for Care and Use of Laboratory Animals and approved by the animal care and use committee at Hiroshima University (Permit number: A08-23 and A08-46).

Female C57BL/6 mice, 8–12 weeks old, were purchased from Japan SLC, Inc. SCID, C.B-17/lcr^{+/+}, C.B-17/lcr-SCID/SCID mice were purchased from CLEA Japan. p110 $\gamma^{-/-}$ mice on the C57BL/6 background were bred and maintained at Akita University (Akita, Japan). Thioglycollate-elicited macrophages were harvested from these mice. Briefly, mice were injected intra-peritoneally with 2 mL 3% thioglycollate broth. After 3 days, the peritoneal exudate cells were collected by washing the peritoneal cavity with ice-cold phosphate-buffered saline (PBS). The cells were seeded at about $5\text{--}10 \times 10^3$ cells/well in 24-well

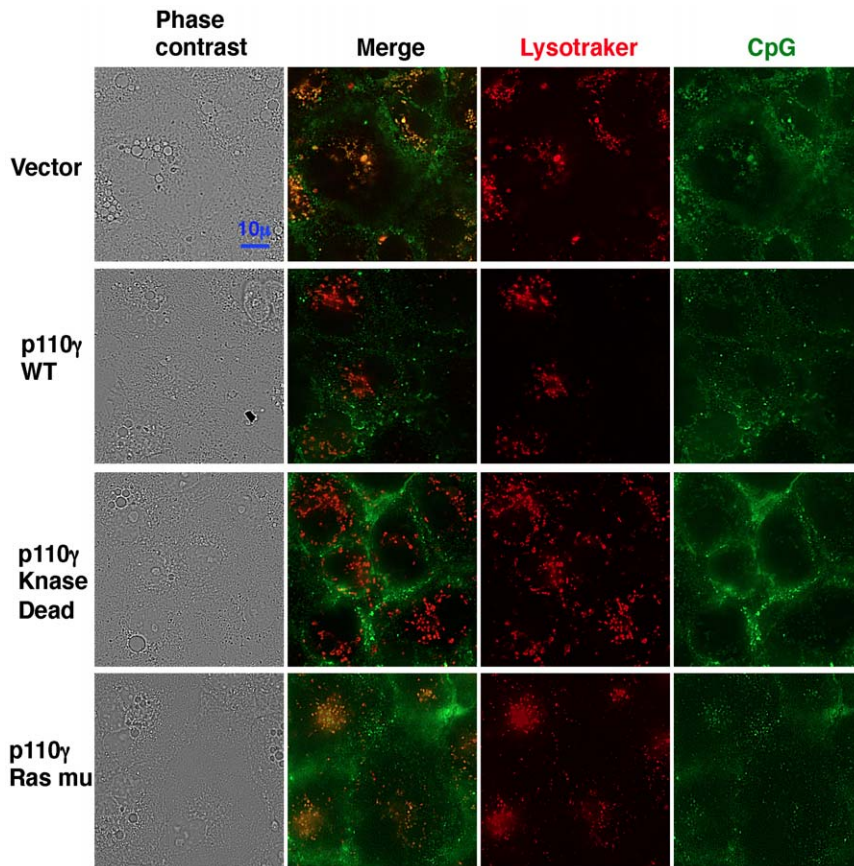


Figure 8. Effect of overexpression of p110 γ on CpG localization in Cos7 cells. Cos7 cells were transfected with PI3K p110 γ or its mutant forms as described under materials and methods. Cells prepared in this manner were incubated with 50 nM LysoTracker red and 0.5 μ M FITC-CpG for 30 min. The cells were washed and observed as live cells. doi:10.1371/journal.pone.0026836.g008

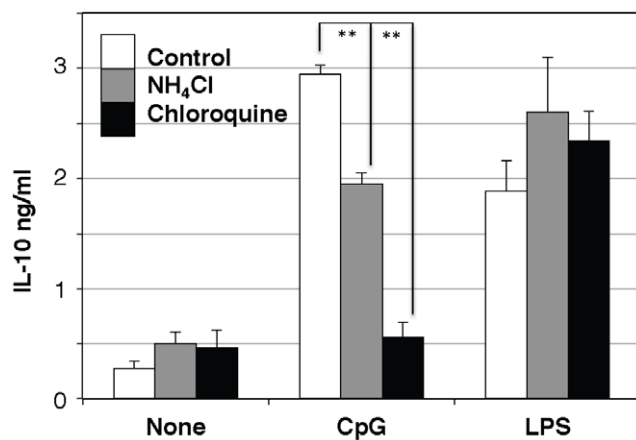


Figure 9. Effect of inhibitors of lysosomal acidification on IL-10 production. Macrophages from wild type mice were preincubated with 20 mM NH₄Cl, 50 μ M Chloroquine or vehicle for 15 min, followed by the addition of 10 ng/mL LPS or 200 ng/mL CpG, for 18 h. The amount of IL-10 in the medium was determined by ELISA. The values are the means \pm SD of duplicate cultures from three independent experiments. **, p < 0.01. doi:10.1371/journal.pone.0026836.g009

plates and incubated in humidified 5% CO₂ at 37°C for 1–2 h in RPMI 1640 medium supplemented with 10% fetal bovine serum (FBS) (MBL, Nagoya, Japan), to allow the cells to adhere to the wells. Non-adherent cells were removed by washing with PBS and the attached cells were used for experiments. Cos7 cells [35] were cultured in DMEM medium supplemented with 10% FBS.

Plasmids and transfection

Mammalian expression plasmids, pcDNA3 (Invitrogen), pcDNA3 containing wild-type p110 γ , pcDNA3 containing a kinase-dead (R947P) mutant, or encoding a Ras binding site mutant (DASAA; T232D, K251A, K254S, K255A and K256A) [36] are transfected in to Cos7 cells using the Lipofectamine 2000 Reagent for 24 h.

Western blot

Cells were washed with PBS and lysed in 50 μ L lysis buffer containing 25 mM Tris-HCl (pH 7.4), 0.5% Nonidet P-40, 150 mM NaCl, 1 mM sodium orthovanadate (Na₃VO₄), 1 mM EDTA, 0.1% BSA, 20 mM sodium fluoride, 1 mM phenylmethylsulfonyl fluoride, 2 μ M leupeptin, 20 μ M p-amidinophenylmethylsulfonyl fluoride, and 1 mM dithiothreitol. The cell lysates were centrifuged at 15,000 rpm for 10 min. Supernatants were collected and the protein concentration was determined using the Bio-Rad assay kit. Total cell lysates (100 μ g protein) were mixed with 10 μ L 5 \times sample buffer (62.5 mM Tris, pH 6.8, 1% SDS, 10% glycerol, 5% 2-mercaptoethanol, and 0.02% bromo-

phenol blue) and heated at 100°C for 5 min. The proteins were separated by SDS-PAGE and transferred electrophoretically onto a polyvinylidene difluoride (PVDF) membrane (Millipore). The membrane was blocked with 5% skim milk and incubated with the appropriate antibodies. Antibody binding was detected using a chemiluminescent substrate (Perkin-Elmer).

ELISA

Macrophage culture supernatants were used for the quantification of p40 and IL-10 using a commercially available ELISA kit.

Microscopy

Macrophages in multi-well, glass-bottom dishes (Greiner bio-one) were allowed to adhere for 60 min before the addition of rhodamine- or FITC-CpG. Where indicated, FITC-dextran or LysoTracker Red was added with CpG. The cells were washed four times to remove excess CpG before live cell imaging. Alternatively, the cells were fixed with 4% formaldehyde in PBS for 15 min, permeabilized with PBS containing 0.3% Triton X-

100 and 0.5% BSA for 60 min, and incubated with anti-DNA-PKcs or anti-EEA1 at 4°C overnight. They were then incubated with Alexa 488-labeled goat anti-mouse IgG antibody (Fab')₂ for 2 h at room temperature. Cos7 cells were seeded into the culture wells a day before the transfection. The cells were incubated with LysoTracker red and FITC-CpG for 15 min as indicated. The cells were washed four times with PBS before imaging. Microscopic studies were performed using the Keyence BZ-9000 (Keyence, Osaka, Japan). The imaging data were analyzed by the BZ-H2A application. Values of (merged area)/(CpG area)×100 were determined from at least 5 imaging data, and the data are shown as the means \pm SD. Statistical differences were determined at the level of $p < 0.05$ or 0.01 with Student's *t* test.

Author Contributions

Conceived and designed the experiments: KH YK OH. Performed the experiments: KH YK HM MU YI. Analyzed the data: KH YK HM KN ST T. Seya MM OH. Contributed reagents/materials/analysis tools: KH ST T. Sasaki T. Seya. Wrote the paper: KH OH.

References

- Krieg AM (2006) Therapeutic potential of Toll-like receptor 9 activation. *Nat Rev Drug Discov* 5: 471–484.
- Wilson HL, Dar A, Napper SK, Mariana Lopez A, Babiuk LA, et al. (2006) Immune mechanisms and therapeutic potential of CpG oligodeoxynucleotides. *Int Rev Immunol* 25: 183–213.
- Hemmi H, Takeuchi O, Kawai T, Kaisho T, Sato S, et al. (2000) A Toll-like receptor recognizes bacterial DNA. *Nature* 408: 740–745.
- Bauer S, Kirschning CJ, Hacker H, Redecke V, Hausmann S, et al. (2001) Human TLR9 confers responsiveness to bacterial DNA via species-specific CpG motif recognition. *Proc Natl Acad Sci U S A* 98: 9237–9242.
- Rutz M, Metzger J, Gellert T, Lupp P, Lipford GB, et al. (2004) Toll-like receptor 9 binds single-stranded CpG-DNA in a sequence- and pH-dependent manner. *Eur J Immunol* 34: 2541–2550.
- Dragoi AM, Fu X, Ivanov S, Zhang P, Sheng L, et al. (2005) DNA-PKcs, but not TLR9, is required for activation of Akt by CpG-DNA. *EMBO J* 24: 779–789.
- Yotsumoto S, Saegusa K, Aramaki Y (2008) Endosomal translocation of CpG-oligodeoxynucleotides inhibits DNA-PKcs-dependent IL-10 production in macrophages. *J Immunol* 180: 809–816.
- Honda K, Ohba Y, Yanai H, Negishi H, Mizutani T, et al. (2005) Spatiotemporal regulation of MyD88-IRF-7 signalling for robust type-I interferon induction. *Nature* 434: 1035–1040.
- Fukao T, Tanabe M, Terauchi Y, Ota T, Matsuda S, et al. (2002) PI3K-mediated negative feedback regulation of IL-12 production in DCs. *Nat Immunol* 3: 875–881.
- Hazeki K, Kinoshita S, Matsumura T, Nigorikawa K, Kubo H, et al. (2006) Opposite effects of wortmannin and 2-(4-morpholinyl)-8-phenyl-1(4H)-benzopyran-4-one hydrochloride on toll-like receptor-mediated nitric oxide production: negative regulation of nuclear factor- κ B by phosphoinositide 3-kinase. *Mol Pharmacol* 69: 1717–1724.
- Kuo CC, Lin WT, Liang CM, Liang SM (2006) Class I and III phosphatidylinositol 3'-kinase play distinct roles in TLR signaling pathway. *J Immunol* 176: 5943–5949.
- Ishii KJ, Takeshita F, Gursel I, Gursel M, Conover J, et al. (2002) Potential role of phosphatidylinositol 3 kinase, rather than DNA-dependent protein kinase, in CpG DNA-induced immune activation. *J Exp Med* 196: 269–274.
- Guiducci C, Ghirelli C, Marloie-Provost MA, Matray T, Coffman RL, et al. (2008) PI3K is critical for the nuclear translocation of IRF-7 and type I IFN production by human plasmacytoid dendritic cells in response to TLR activation. *J Exp Med* 205: 315–322.
- Cao W, Manicassamy S, Tang H, Kasturi SP, Pirani A, et al. (2008) Toll-like receptor-mediated induction of type I interferon in plasmacytoid dendritic cells requires the rapamycin-sensitive PI(3)K-mTOR-p70S6K pathway. *Nat Immunol* 9: 1157–1164.
- Marone R, Cmiljanovic V, Giese B, Wymann MP (2008) Targeting phosphoinositide 3-kinase: moving towards therapy. *Biochim Biophys Acta* 1784: 159–185.
- Saegusa K, Yotsumoto S, Kato S, Aramaki Y (2007) Phosphatidylinositol 3-kinase-mediated regulation of IL-10 and IL-12 production in macrophages stimulated with CpG oligodeoxynucleotide. *Mol Immunol* 44: 1323–1330.
- Sasaki T, Irie-Sasaki J, Jones RG, Oliveira-dos-Santos AJ, Stanford WL, et al. (2000) Function of PI3K γ in thymocyte development, T cell activation, and neutrophil migration. *Science* 287: 1040–1046.
- Hacker H, Mischak H, Miethke T, Liptay S, Schmid R, et al. (1998) CpG-DNA-specific activation of antigen-presenting cells requires stress kinase activity and is preceded by non-specific endocytosis and endosomal maturation. *EMBO J* 17: 6230–6240.
- Latz E, Schoenemeyer A, Visintin A, Fitzgerald KA, Monks BG, et al. (2004) TLR9 signals after translocating from the ER to CpG DNA in the lysosome. *Nat Immunol* 5: 190–198.
- Misinzio G, Delputte PL, Nauwynck HJ (2007) Inhibition of endosome-lysosome system acidification enhances porcine circovirus 2 infection of porcine epithelial cells. *J Virol* 82: 1128–1135.
- Patrucco E, Notte A, Barberis L, Selvetella G, Maffei A, et al. (2004) PI3K γ modulates the cardiac response to chronic pressure overload by distinct kinase-dependent and -independent effects. *Cell* 118: 375–387.
- Hirsch E, Braccini L, Cirao E, Morello F, Perino A (2009) Twice upon a time: PI3K's secrets double life exposed. *Trends Biochem Sci* 34: 244–248.
- Koga K, Takaesu G, Yoshida R, Nakaya M, Kobayashi T, et al. (2009) Cyclic adenosine monophosphate suppresses the transcription of proinflammatory cytokines via the phosphorylated c-Fos protein. *Immunity* 30: 372–383.
- Sasaki T, Irie-Sasaki J, Horie Y, Bachmaier K, Fata JE, et al. (2000) Colorectal carcinomas in mice lacking the catalytic subunit of PI(3)K γ . *Nature* 406: 897–902.
- Suire S, Coadwell J, Ferguson GJ, Davidson K, Hawkins P, et al. (2005) p84, a new Gbetagamma-activated regulatory subunit of the type IB phosphoinositide 3-kinase p110 γ . *Curr Biol* 15: 566–570.
- Voigt P, Dörner MB, Schaefer M (2006) Characterization of p87PIKAP, a novel regulatory subunit of phosphoinositide 3-kinase γ that is highly expressed in heart and interacts with PDE3B. *J Biol Chem* 281: 9977–9986.
- Stephens LR, Eguinoa A, Erdjument-Bromage H, Lui M, Cooke F, et al. (1997) The G beta gamma sensitivity of a PI3K is dependent upon a tightly associated adaptor, p101. *Cell* 89: 105–114.
- Rommel C, Camps M, Ji H (2007) PI3K delta and PI3K gamma: partners in crime in inflammation in rheumatoid arthritis and beyond? *Nat Rev Immunol* 7: 191–201.
- Barber DF, Bartolome A, Hernandez C, Flores JM, Redondo C, et al. (2005) PI3K γ inhibition blocks glomerulonephritis and extends lifespan in a mouse model of systemic lupus. *Nat Med* 11: 933–935.
- Chang JD, Sukhova GK, Libby P, Schwartz E, Lichtenstein AH, et al. (2007) Deletion of the phosphoinositide 3-kinase p110 γ gene attenuates murine atherosclerosis. *Proc Natl Acad Sci U S A* 104: 8077–8082.
- Camps M, Ruckle T, Ji H, Ardisson V, Rintelen F, et al. (2005) Blockade of PI3K γ suppresses joint inflammation and damage in mouse models of rheumatoid arthritis. *Nat Med* 11: 936–943.
- Fukao T, Koyasu S (2003) PI3K and negative regulation of TLR signaling. *Trends Immunol* 24: 358–363.
- Ohashi PS, Woodgett JR (2005) Modulating autoimmunity: pick your PI3 kinase. *Nat Med* 11: 924–925.
- Ruckle T, Schwarz MK, Rommel C (2006) PI3K γ inhibition: towards an 'aspirin of the 21st century'? *Nat Rev Drug Discov* 5: 903–918.
- Gluzman Y (1981) SV40-transformed simian cells support the replication of early SV40 mutants. *Cell* 23: 175–182.
- Suire S, Condliffe AM, Ferguson GJ, Ellson CD, Guillou H, et al. (2006) Gbetagammals and the Ras binding domain of p110 γ are both important regulators of PI(3)K γ signalling in neutrophils. *Nat Cell Biol* 8: 1303–1309.