



NEWS AND VIEWS

To be EndMT or not to be, that is the question in pulmonary hypertension

Jianhua Xiong

Center for Molecular Medicine, National Heart, Lung and Blood Institute, National Institutes of Health, Bethesda, MD 20892, USA

Correspondence: jianhua.xiong@nih.gov (J. Xiong)

Pulmonary hypertension (PH) is a progressive and devastating disease of various causes that is associated with structural and functional disorder and inappropriately increased pressure of pulmonary small- to medium-sized vasculature. Extensive pulmonary vascular remodeling with narrowing lumen is well characterized in all forms of PH, which is hemodynamically defined by a mean pulmonary artery pressure exceeding 25 mmHg at rest (Schermyly et al., 2011; Mehari et al., 2014). The morbidity and mortality of PH continues to increase due to no cure (Mehari et al., 2014); however, our understanding of the mechanism and therapeutics underlying PH remains far from complete. There are many competing hypotheses for how PH develops in a genetic or sporadic way (Schermyly et al., 2011). One of them is that the endothelial-to-mesenchymal transition (EndMT) could be implicated in initiation and progression of human PH (Arciniegas et al., 2007). Notably, this point is further emphasized by two recent papers, which provide direct evidence linking EndMT to PH (Good et al., 2015; Ranchoux et al., 2015).

Vascular remodeling of intimal, medial, and adventitial hypertrophy in PH roughly involves endothelium, smooth muscle, and fibroblasts (Schermyly et al., 2011). Although pulmonary vasculature in PH is thought to undergo a series of structure change events with a complex multifactorial etiology, endothelial cells seem to play a central role in this process in view of the following four major reasons. First, the common plexiform lesions in the vessels of patients with PH generally result from excessive endothelial cell proliferation. Second, endothelial cells act with quite widespread autocrine and paracrine effects via secretion of numerous cell signaling effectors including, but certainly not limited to, nitric oxide, endothelin-1, and serotonin. Third, impaired semipermeable barrier of the pulmonary endothelial lining due to endothelial injuries renders the underlying interstitial cells susceptible to diverse blood-borne factors

(Budhiraja et al., 2004). Last, germline loss-of-function bone morphogenic protein receptor type 2 (BMP2) mutations have been significantly linked to the etiology of familial and idiopathic primary pulmonary hypertension (International et al., 2000; Austin and Loyd, 2014). More importantly, BMP2 is predominantly expressed in endothelium and tightly controls the permeability of the pulmonary artery endothelial wall (Atkinson et al., 2002; Burton et al., 2011).

EndMT is characterized by the acquisition of mesenchymal- and stem-cell-like properties in endothelium subjected to intrinsic or extrinsic cues and functions as a critical source of fibroblasts in various physiological and pathological settings encompassing heart development, tumor progression, and fibrosis (Lin et al., 2012; Yu et al., 2014). One such notorious fibrosis target organ is lung. Reduced fibrinolytic activity and thereby elevated cellular fibronectin concentration have been demonstrated in the lung vessels of monocrotaline-induced rat PH model (Schultze and Roth, 1993; Schultze et al., 1996). Increased collagen deposition is capable of decreasing the distensibility of hypertensive pulmonary arteries (Tozzi et al., 1994). As mentioned earlier, even dysregulation of the intracellular cytoskeleton network causes altered permeability and morphology of pulmonary endothelium (Dudek and Garcia, 2001). Subsequently, Arciniegas and colleagues observed EndMT in pulmonary artery development of chicken embryos *in vivo* and *in vitro* (Arciniegas et al., 2005). In addition, myocardium promotes the transdifferentiation of pulmonary arteriolar endothelial cells into smooth muscle-like cells in hypoxia-induced rat PH model and porcine pulmonary artery endothelial cells (Zhu et al., 2006). A prior study showed a spontaneous and transforming growth factor β (TGF- β)-induced EndMT in pulmonary endothelial cells isolated from caveolin-1 knockout mice compared to their wild-type littermates (Li et al., 2013). Moreover, the precisely orchestrated EndMT contributes to bleomycin- and radiation-induced pulmonary fibrosis (Hashimoto et al., 2010; Choi et al., 2015). As

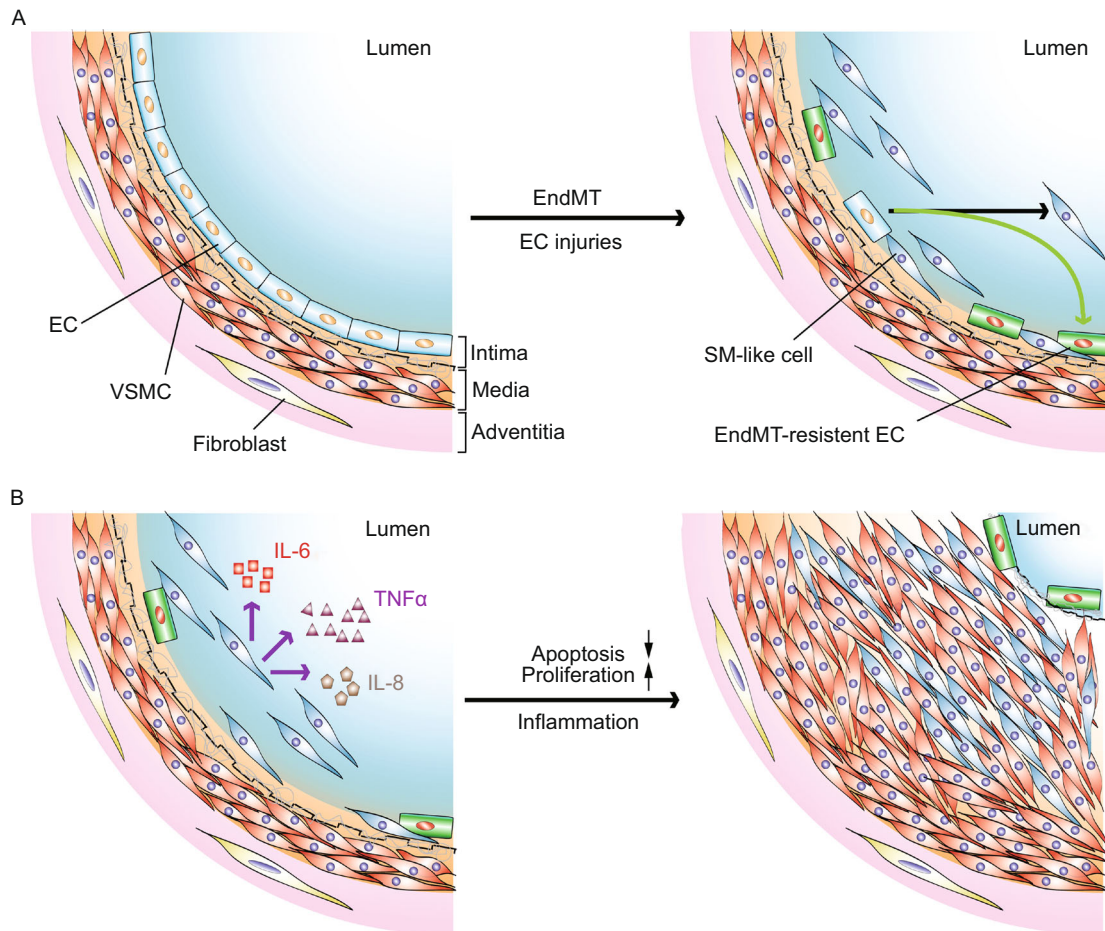


Figure 1. The role of endothelial-to-mesenchymal transition (EndMT) at roughly early (A) and late (B) stages in the pathogenesis of pulmonary hypertension. (A) Genetic and/or microenvironmental insults-induced EC injuries trigger EndMT in pulmonary vasculature. (B) Activated EndMT cells secrete proinflammatory cytokines to potentially stimulate VSMC and/or SM-like cell proliferation and inhibit these cell apoptosis, leading to pulmonary hypertension. Abbreviations: EC, endothelial cell; VSMC, vascular smooth muscle cell; SM-like, smooth muscle-like; IL-6, interleukin-6; IL-8, interleukin-8; TNF α , tumor necrosis factor α .

progressive pulmonary fibrosis can lead to pulmonary hypertension (Rockey et al., 2015), it will be of considerable interest to ask whether EndMT participates in the regulatory network of human PH and, if so, what is the exact role of EndMT in the development of PH?

A key step towards answering these questions has been made by two intriguing studies (Good et al., 2015; Ranchoux et al., 2015) (Fig. 1). As some may recall, Qiao and colleagues took advantage of mice that underwent left pneumonectomy and monocrotaline pyrrole injection to establish a mouse model of PH. Endothelial lineage tracing analyses in this PH mouse model reveals that endothelial cells in the pulmonary neointima have detectable smooth muscle gene expression. Likewise, concurrent expression of endothelial cell and smooth muscle markers occurs in human pulmonary arterial hypertension neointimal lesions (Qiao et al., 2014). Consistent with these observations, Good et al. determined the presence of EndMT by assessing the colocalization of von Willebrand factor and α -smooth muscle actin (α -SMA) in the pulmonary endothelium

from the hypoxia/SU5416 preclinical murine pulmonary artery hypertension (PAH) model and systemic sclerosis-associated-PAH (SSc-PAH) patients. Furthermore, a panel of functional assays *in vitro* lends further support to the notion that EndMT is a *bona fide* mechanism underlying the pathogenesis of PH (Good et al., 2015). TGF- β has been delineated as a major inducer of EndMT (van Meeteren and ten Dijke, 2012). Nevertheless, utilizing the single reagent TGF- β to galvanize transcription program switching in the EndMT of human pulmonary microvascular endothelial cells seems to require three weeks and several passages (Reynolds et al., 2012). Using a cocktail of TGF- β and inflammatory cytokines tumor necrosis factor α (TNF α) and interleukin 1 β (IL-1 β) previously described for induction of EndMT in human intestinal microvascular endothelial cells (Rieder et al., 2011), Good et al. obtained the induced EndMT (I-EndMT) cells derived from human pulmonary artery endothelial cells *in vitro* in a more efficient fashion (Good et al., 2015). These I-EndMT cells secrete high levels of proinflammatory cytokines (such as IL-6, IL-8, and TNF α) and

exhibit a similar proinflammatory phenotype in patients with human lung fibroblasts SSc-PAH. Next, it was found that the endothelial barrier integrity is significantly compromised in I-EndMT cells, reminiscent of the features in PH endothelium (Budhiraja et al., 2004; Good et al., 2015).

Writing in *Circulation* at nearly the same time, Ranchoux et al. reported that analysis of endothelial cell-cell junction, and endothelial and subendothelial cell phenotype in intimal and plexiform lesions from PAH lungs relative to control non-tumor lung specimens, was carried out using unambiguous endothelial (CD31, CD34, VE-cadherin) and mesenchymal α -SMA markers. Combined with this analysis result, the protein and mRNA expression patterns consolidate the notion of a key role of EndMT in PH pathology (Ranchoux et al., 2015). Additionally, a unique and refined morphological signature in plexogenic pulmonary arteriopathy has been identified thanks to pioneering research efforts (Smith and Heath, 1979; Weibel, 2012). Remarkably, Ranchoux and co-workers applied transmission electron microscopy, and correlative light and electron microscopy, providing unequivocal ultrastructural-level evidence of ongoing dynamic EndMT in PH samples. Next, the EndMT was examined in the context of conventional monocrotaline and SuHx mouse PH models and the novel BMPR2 deficient rat PH model. Indeed, the *in vivo* EndMT characteristics in these mouse models are comparable to those in human PH tissues. Excitingly, partial rescue of EndMT-related gene expression and phenotypes has been achieved by rapamycin (Ranchoux et al., 2015).

The headline finding of these two studies is that the concept of EndMT in PH has been initially proposed on the basis of compelling experimental proofs (Good et al., 2015; Ranchoux et al., 2015). This discovery opens a new therapeutic window for suppressing or even reversing the pathogenic progression in certain common, but genetically defined, subtype of human PH. Each pulmonary endothelial cell in potential or current patients with PH decides whether its next action is to be EndMT or not to be (with apologies to pre-eminent English dramatist William Shakespeare for scrambling the immortal opening phase in his play Hamlet). In the broad landscape, it will be imperative to determine how the EndMT process is orchestrated, and what its context dependencies may be. Future advances in understanding the distinct stage-specific EndMT events and the druggability of EndMT will require a gene expression profile and more functional analyses to unravel the molecular mechanism in a tempo-spatial manner. Finally, these studies offer the possibility of EndMT as a promising pharmaceutical target in human PH, which warrants further investigations.

FOOTNOTES

The author is grateful for the support from the NIH Intramural Program and the Leducq Foundation. The author thanks Cindy Clark, NIH Library Writing Center, for manuscript editing assistance.

Jianhua Xiong declares that he has no conflict of interest. This article does not contain any studies with human or animal subjects performed by the author.

OPEN ACCESS

This article is distributed under the terms of the Creative Commons Attribution 4.0 International License (<http://creativecommons.org/licenses/by/4.0/>), which permits unrestricted use, distribution, and reproduction in any medium, provided you give appropriate credit to the original author(s) and the source, provide a link to the Creative Commons license, and indicate if changes were made.

REFERENCES

- Arciniegas E, Neves CY, Carrillo LM, Zambrano EA, Ramirez R (2005) Endothelial-mesenchymal transition occurs during embryonic pulmonary artery development. *Endothelium* 12:193–200
- Arciniegas E, Frid MG, Douglas IS, Stenmark KR (2007) Perspectives on endothelial-to-mesenchymal transition: potential contribution to vascular remodeling in chronic pulmonary hypertension. *Am J Physiol Lung Cell Mol Physiol* 293:L1–L8
- Atkinson C, Stewart S, Upton PD, Machado R, Thomson JR, Trembath RC, Morrell NW (2002) Primary pulmonary hypertension is associated with reduced pulmonary vascular expression of type II bone morphogenetic protein receptor. *Circulation* 105:1672–1678
- Austin ED, Loyd JE (2014) The genetics of pulmonary arterial hypertension. *Circ Res* 115:189–202
- Budhiraja R, Tuder RM, Hassoun PM (2004) Endothelial dysfunction in pulmonary hypertension. *Circulation* 109:159–165
- Burton VJ, Ciuculan LI, Holmes AM, Rodman DM, Walker C, Budd DC (2011) Bone morphogenetic protein receptor II regulates pulmonary artery endothelial cell barrier function. *Blood* 117:333–341
- Choi SH, Hong ZY, Nam JK, Jang J, Lee HJ, Yoo RJ, Lee YJ, Park S, Ji YH, Lee YS et al (2015) A hypoxia-induced vascular endothelial-to-mesenchymal transition in development of radiation-induced pulmonary fibrosis. *Clin Cancer Res*
- Dudek SM, Garcia JG (2001) Cytoskeletal regulation of pulmonary vascular permeability. *J Appl Physiol* 91(1985):1487–1500
- Good RB, Gilbane AJ, Trinder SL, Denton CP, Coghlan G, Abraham DJ, Holmes AM (2015) Endothelial to mesenchymal transition contributes to endothelial dysfunction in pulmonary artery hypertension. *Am J Pathol*
- Hashimoto N, Phan SH, Imaizumi K, Matsuo M, Nakashima H, Kawabe T, Shimokata K, Hasegawa Y (2010) Endothelial-mesenchymal transition in bleomycin-induced pulmonary fibrosis. *Am J Respir Cell Mol Biol* 43:161–172
- International PPHC, Lane KB, Machado RD, Pauciuolo MW, Thomson JR, Phillips JA 3rd, Loyd JE, Nichols WC, Trembath RC (2000) Heterozygous germline mutations in BMPR2, encoding a TGF-beta receptor, cause familial primary pulmonary hypertension. *Nat Genet* 26:81–84
- Li Z, Wermuth PJ, Benn BS, Lisanti MP, Jimenez SA (2013) Caveolin-1 deficiency induces spontaneous endothelial-to-mesenchymal transition in murine pulmonary endothelial cells in vitro. *Am J Pathol* 182:325–331
- Lin F, Wang N, Zhang TC (2012) The role of endothelial-mesenchymal transition in development and pathological process. *IUBMB Life* 64:717–723

- Mehari A, Valle O, Gillum RF (2014) Trends in pulmonary hypertension mortality and morbidity. *Pulm Med* 2014:105864
- Qiao L, Nishimura T, Shi L, Sessions D, Thrasher A, Trudell JR, Berry GJ, Pearl RG, Kao PN (2014) Endothelial fate mapping in mice with pulmonary hypertension. *Circulation* 129:692–703
- Ranchoux B, Antigny F, Rucker-Martin C, Hautefort A, Pechoux C, Bogaard HJ, Dorfmüller P, Remy S, Lecerf F, Plante S et al (2015) Endothelial-to-mesenchymal transition in pulmonary hypertension. *Circulation* 131:1006–1018
- Reynolds AM, Holmes MD, Danilov SM, Reynolds PN (2012) Targeted gene delivery of BMPR2 attenuates pulmonary hypertension. *Eur Respir J* 39:329–343
- Rieder F, Kessler SP, West GA, Bhilocha S, de la Motte C, Sadler TM, Gopalan B, Stylianou E, Fiocchi C (2011) Inflammation-induced endothelial-to-mesenchymal transition: a novel mechanism of intestinal fibrosis. *Am J Pathol* 179:2660–2673
- Rockey DC, Bell PD, Hill JA (2015) Fibrosis—a common pathway to organ injury and failure. *N Engl J Med* 372:1138–1149
- Schermuly RT, Ghofrani HA, Wilkins MR, Grimminger F (2011) Mechanisms of disease: pulmonary arterial hypertension. *Nat Rev Cardiol* 8:443–455
- Schultze AE, Roth RA (1993) Fibrinolytic activity in blood and lungs of rats treated with monocrotaline pyrrole. *Toxicol Appl Pharmacol* 121:129–137
- Schultze AE, Emeis JJ, Roth RA (1996) Cellular fibronectin and von Willebrand factor concentrations in plasma of rats treated with monocrotaline pyrrole. *Biochem Pharmacol* 51:187–191
- Smith P, Heath D (1979) Electron microscopy of the plexiform lesion. *Thorax* 34:177–186
- Tozzi CA, Christiansen DL, Poiani GJ, Riley DJ (1994) Excess collagen in hypertensive pulmonary arteries decreases vascular distensibility. *Am J Respir Crit Care Med* 149:1317–1326
- van Meeteren LA, ten Dijke P (2012) Regulation of endothelial cell plasticity by TGF-beta. *Cell Tissue Res* 347:177–186
- Weibel ER (2012) Fifty years of Weibel-Palade bodies: the discovery and early history of an enigmatic organelle of endothelial cells. *J Thromb Haemost* 10:979–984
- Yu W, Liu Z, An S, Zhao J, Xiao L, Gou Y, Lin Y, Wang J (2014) The endothelial-mesenchymal transition (EndMT) and tissue regeneration. *Curr Stem Cell Res Ther* 9:196–204
- Zhu P, Huang L, Ge X, Yan F, Wu R, Ao Q (2006) Transdifferentiation of pulmonary arteriolar endothelial cells into smooth muscle-like cells regulated by myocardin involved in hypoxia-induced pulmonary vascular remodelling. *Int J Exp Pathol* 87:463–474