

C-reactive protein and risk of ovarian cancer

A systematic review and meta-analysis

Jing Li, MD, PhD^a, Xuedan Jiao, MD^b, Zhongfu Yuan, MD^c, Haifeng Qiu, MD, PhD^{c,*}, Ruixia Guo, MD, PhD^{c,*}

Abstract

Background: Although several studies have suggested an association between elevated C-reactive protein (CRP) and ovarian cancer risk, others have yielded contradictory results. To address this issue, we conducted a meta-analysis.

Methods: Studies were identified by searching PubMed and EMBASE up to July 2017 without language restrictions. Six case-control studies and 1 cohort study were included, including 1898 ovarian cancer cases. Pooled risk estimates were generated by using the fixed-effect model or the random-effect model based on the heterogeneity between studies.

Results: As our data shown, the combined ORs were 1.04 (95%CI: 0.90–1.21) and 1.34 (95% CI: 1.06–1.70) for the risk in the second and third tertiles of CRP with those in the bottom tertile, respectively. Subgroup analysis showed that with respect to the top tertile of CRP level, the association was significant for studies obtaining CRP from serum (OR=1.99; 95% CI: 1.30–3.07), conducted in the USA (OR=1.41; 95% CI: 1.15–1.72), using high-sensitivity immunotubidimetric assay (OR=1.37; 95% CI: 1.14–1.64), using Hs-CRP (OR=1.46; 95% CI: 1.21–1.75) and with follow-up period longer than 10 years (OR=1.41; 95% CI: 1.18–1.70).

Conclusion: Collectively, our findings propose that serum CRP levels may serve as an indicator of ovarian cancer risk. Further studies are needed to definitively identify the role of CRP in the etiology of ovarian cancer.

Abbreviations: BMI = body mass index, CI = confidence interval, CRP = C-reactive protein, HT = hormone therapy, NSAIDs = nonsteroidal anti-inflammation drugs, OC = oral contraceptive, OR = odds ratio, REML = restricted maximum-likelihood estimator, RR = relative risk.

Keywords: C-reactive protein, meta-analysis, ovarian cancer

1. Introduction

Worldwide, ovarian cancer is the most lethal gynecologic cancer.^[1] There is an estimated 21290 new cases and 14180 new deaths caused by this malignancy in the United States in 2015.^[2] Due to the limited knowledge about the etiology of ovarian cancer, there are currently no effective approaches for detection and treatment. Thus, more than 70% of ovarian cancer patients are already at advanced stages when diagnosed with

significant morbidity and mortality.^[3,4] During the past half century, a large amount of evidence has linked inflammation with the onset of ovarian cancer; studies have found that pelvic inflammation and endometriosis are notably associated with an increased risk of ovarian cancer.^[5–7] In turn, researchers suggest the use of anti-inflammation drugs may reduce the incidence of ovarian cancer.^[8]

The C-reactive protein (CRP) is a highly sensitive and widely used systematic marker of inflammation, produced primarily by hepatocytes along with other acute-phase proteins and released into circulation in response to tissue injury and inflammation.^[9] Accumulating epidemiologic studies have demonstrated the association between elevated CRP levels and the risk of epithelial cancers, such as liver, lung, colorectal, endometrial, and breast cancers.^[10–13] However, data on the association between CRP and ovarian cancer risk are sparse and inconsistent.

Several prospective studies have suggested the positive association between the pre-diagnostic CRP level and the ovarian cancer risk, with the odds ratio ranging from 1.09 to 2.33 for the top tertile compared with the bottom tertile.^[14–19] However, different results were obtained by Lundin et al,^[18] who observed no overall correlation between the 2 parameters, but a strong positive association for women with CRP concentrations greater than 10 mg/L, using American, Swedish, and Italian subjects. Similar results were also found by Ose and colleagues,^[15] which is the most recent and largest prospective study by far, with a total of 754 ovarian cancer cases and 1479 normal controls. As there are conflicting results on the association between the CRP level and the ovarian cancer risk, we conducted the meta-analysis to systematically assess the relationship between increased CRP levels and the ovarian cancer risk.

Editor: Peng Luo.

JL and XJ contributed equally to this study.

Funding: This study was supported by the Postdoctoral Science Foundation of China (2015M570633 and 2016T90682), the National Natural Science Funds of China (81502261), and the Program for Science and Technology Innovation Teams in Universities of Henan Province (17IRTSTHN021).

The authors have no conflicts of interest to disclose.

^a Department of Oncology, The First Affiliated Hospital of Zhengzhou University, Zhengzhou, Henan Province, ^b Reproductive Center, Department of Obstetrics and Gynecology, Sun Yet-Sen Memorial Hospital, Guangzhou, Guangdong Province, ^c Department of Obstetrics and Gynecology, The First Affiliated Hospital of Zhengzhou University, Zhengzhou, Henan Province, China.

* Correspondence: Haifeng Qiu and Ruixia Guo, No. 1, East Jiانش Road, Erqi District, Zhengzhou, Henan Province-, China (e-mail: haifengqiu120@163.com); (e-mail: tjmgrx@163.com).

Copyright © 2017 the Author(s). Published by Wolters Kluwer Health, Inc. This is an open access article distributed under the Creative Commons Attribution-ShareAlike License 4.0, which allows others to remix, tweak, and build upon the work, even for commercial purposes, as long as the author is credited and the new creations are licensed under the identical terms.

Medicine (2017) 96:34(e7822)

Received: 30 March 2017 / Received in final form: 17 July 2017 / Accepted: 19 July 2017

<http://dx.doi.org/10.1097/MD.0000000000007822>

2. Materials and methods

2.1. Publications selection

A comprehensive literature search and review up to July 2017 was performed through PubMed and Excerpta Medica database (EMBASE) to identify relevant articles. Search terms included “C-reactive protein” or “C-reactive protein” or “CRP” along with terms “ovarian cancer” or “ovarian carcinoma.” Additional relevant references cited in retrieved articles were also evaluated.

2.2. Inclusion and exclusion criteria

All papers were reviewed by 2 authors independently. Uncertainties and discrepancies were resolved by consensus after discussing with a senior researcher. No language restrictions were imposed. All studies included in the final meta-analysis satisfied the following criteria: (1) case-control or cohort study design; (2) reporting results on blood CRP levels; (3) ovarian cancer incidence as the outcome of interest; (4) reporting odds ratio (OR) in case-control studies or relative risk (RR) with their corresponding 95% CI (or sufficient data to calculate these effect measures). If the study was reported in duplication, the one published later or provided more detailed information was included. Review and editorials were included if they met the above 4 criteria. Abstracts and full texts without original data even after having contacted the authors were excluded.

2.3. Data extraction

Two of the authors performed the data extraction from each article and resolved the discrepancies in consensus. For studies meeting inclusion criteria, a standardized data extraction form was used to extract the following data: the first author’s name, year of publication, study design, country of origin, cohort or case-control study name, period of enrollment, the number of participants, cancer cases and controls, CRP measurement methods, CRP markers, the clinical outcome assessment methods, OR or RR estimates with corresponding 95% CIs for CRP as a continuous variable or at least 3 categories of CRP levels. For each study, we extracted the risk estimates that were adjusted for the greatest number of potential confounders.

The OR or RR in the natural log scale change in increased tertile of CRP level with their standard error (SE) was used to compute the combined OR of elevated CRP level and the risk of ovarian cancer. For studies that reported 95% CIs of OR instead of SE of $\log(\text{OR})$, we first estimated the lower and upper bounds of SE by using the inversed function for 95% CI. The SE was then approximately estimated as the squared root of the product of the lower and upper bounds obtained above. Weighted estimation with inverse-variance weights was used to assess the overall averaged risk of increased CRP level. Fixed-effect and random-effect models were selected for meta-analysis based on the extent of heterogeneity between publications. The Cochrane Q test ($P < .05$ indicated a high level of statistical heterogeneity) and I^2 (values of 25%, 50% and 75% corresponding to low, moderate, and high degrees of heterogeneity, respectively) was used to evaluate the heterogeneity between eligible studies, which test total variation across studies that was attributed to heterogeneity rather than to chance. As substantial heterogeneity was detected between studies, the random-effect model that allows for possible variations of risks was adopted. The restricted maximum-likelihood estimator (REML) was used to account for the amount of heterogeneity and fitted the random-effect model.

Subgroup analysis for increased CRP level and their risk of ovarian cancer were subsequently carried out by the country of

origin, CRP markers, CRP assay methodology, sample source, follow-up period, and the adjusted variables of age, BMI, smoking, parity, nonsteroidal anti-inflammation drugs (NSAIDs) use, hormone therapy (HT) use, and oral contraceptive (OC) use, respectively. Sensitivity analysis was also conducted to assess the influence of each individual study on the strength and stability of the meta-analysis results. To show each study’s independent impact on the combined effect, 1 study in the meta-analysis was excluded at each time and the combined effect was recalculated. Funnel plots and 2 widely used statistical tests including Begg’s adjusted rank correlation test and Egger’s regression test on asymmetry of funnel plot were performed to test any existing publication bias.

2.4. Statistical analysis

All analyses were performed using the Meta-Analysis Package for R (“metaphor” package version 1.9–7) under R statistical environment (version 3.1.0).^[20] A 2-tailed $P < .05$ was considered as statistically significant.

3. Results

3.1. Literature search

A total of 367 publications were retrieved from the initial literature search, of which 52 studies were considered potentially valuable after reviewing the titles and abstracts. The full text was then retrieved for detailed evaluation. After further investigating the studies, 5 were screened out due to prognostic studies. Finally, 6 studies were eligible for meta-analysis, including 6 independent case-control studies and 1 cohort study. The flow chart of the search process is shown in Fig. 1.

3.2. Characteristics of the selected studies

The characteristics of the included 6 case-control studies and 1 cohort study are summarized in Table 1. They were published from 2007 to 2017 and including a total of 1898 ovarian cancer

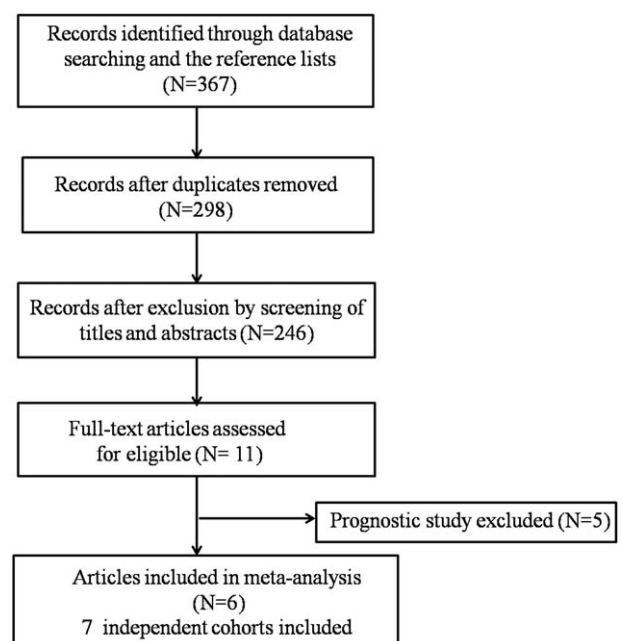


Figure 1. Flow diagram of systematic literature search.

Table 1**Characteristics of the included studies.**

Study population	1st author	Year	Study year of recruit	Country	Study design	Case	Control	Outcome assess	Marker	CPP measurement methods	Tertile cut-points, mg/L
CLUI, CLUII, ColumbiaMO, Guernsey phase I, Guernsey phase II	Mcorley	2007	1974–1990	USA	British Nested C–C	166	335	Cancer registry/pathology reports	Hs-CRP	ELISA	Study-specific tertiles
NSHDS, NYUWHS ORDET	Lundin	2009	1980s–2000s	Sweden	Nested C–C	237	427	Cancer registry/pathology review	CRP	High sensitivity immunotubidimetric assay	NSDHS-Sweden: 0.84/0.85–2.06/2.07; NYUWHS-USA: 1.17; ORDET-Italy: 0.91/0.92–1.96/1.97
FMC	Toriola	2010	1983–2010	Finland	Nested C–C	170	170	Cancer registry	Hs-CRP	High sensitivity immunotubidimetric assay	1.6/1.6–3.9/3.9
NIH/NIHII	Poole	2013	1989–1999	USA	Nested C–C	263	518	Medical record review	Hs-CRP	High sensitivity immunotubidimetric assay	0.72/0.72–2.36/2.36
WHS	Poole	2013	1992–2004	USA	Cohort	159	27746	NA	Hs-CRP	High sensitivity immunotubidimetric assay	1.15/1.15–3.38/3.39
PLCO	Trabert	2014	1993–2001	USA	Nested C–C	149	149	Medical record	CRP	Luminex bead-based assay	3.23/3.23–9.76/9.76
EPIC	Ose	2015	1992–2000	Germany	Nested C–C	754	1497	Cancer and pathology registries	CRP	High sensitivity immunoassay	0.53–1.47/1.48–4.01/4.01

C-C = case-control, CLUE I = Campaign Against Cancer and Stroke, CLUE II = Campaign Against Cancer and Heart Disease, Columbia MO = Columbia, Missouri, Serum Bank, CRP = C-reactive protein, ELISA = enzyme-linked immunosorbent assay, EPIC = European Prospective Investigation into Cancer and Nutrition, FMC = Finnish Maternity Cohort, Guernsey = Island of Guernsey Prospective Study, Hs-CRP = high-sensitivity C-reactive protein, NHS II = Nurses' Health Study II, NHS = Nurses' Health Study, NSHDS = Northern Sweden Health and Disease Study, NYUWHS = New York University Women's Health Study, ORDET = Hormones and Diet in the Etiology of Breast Cancer, PLCO = Prostate Lung Colorectal and Ovarian Cancer, WHS = Women's Health Study.

cases. Among these studies, 3 were conducted in the United States, 3 in Europe, and 1 in both. The study design of 6 studies was a nested case-control study and 1 was a cohort study. Cancer diagnoses were confirmed in 2 studies by linkage to both cancer registries and pathology reports, 2 by cancer registry, 2 by medical records, and 2 was not provided. CRP was measured in 4 studies by high-sensitivity CRP marker, 4 by high sensitivity immunotubidimetric assay, 1 by enzyme-linked immunosorbent assay (ELISA), 1 by high sensitivity immunoassay, and 1 by Luminex bead-based assay. All the 7 cohorts were adjusted for age, smoking, NSAIDs use, hormone replacement therapy (HRT) use, and oral contraceptive (OC) use; 6 were adjusted for BMI and parity status.

3.3. Association between the CRP level and elevated ovarian cancer risk

The reported covariates-adjusted OR for each study and the overall risk estimation for CRP are shown in Fig. 2. When comparing women in the second tertile of CRP with those in the bottom tertile, the combined ORs were 1.04 (95% CI: 0.90–1.21). No significant heterogeneity was found in this scenario ($P_{\text{heterogeneity}} = .337$, $I^2 = 25.97\%$). As comparing women in the top tertile of CRP with those in the bottom tertile, the pooled estimates of ORs was 1.34 (95% CI: 1.06–1.70). Heterogeneity across the studies was significant ($P_{\text{heterogeneity}} = .018$, $I^2 = 59.39\%$). Consistent results were found by using only 6 case-control studies (OR = 0.99, 95% CI: 0.85–1.15, and OR = 1.35, 95% CI: 1.03–1.78, for the second and top tertiles, respectively). In addition, 4 studies reported the significant association between higher CRP levels (>10 mg/L) and ovarian cancer risk in consensus. As shown in Fig. 3, a CRP level greater than 10 mg/L presented a remarkably increased risk for ovarian cancer (ORs = 2.09; 95% CI: 1.49–2.94; $P_{\text{heterogeneity}} = .327$, $I^2 = 12.73\%$).

3.4. Subgroup analysis

To explore the heterogeneity among studies evaluating CRP levels and ovarian cancer risk, we performed subgroup analysis

(Table 2). The association of CRP level with ovarian cancer risk did not differ by any of the stratified subgroups. With respect to the third tertile of CRP level, the association was stronger in the group of sample sources from serum (OR = 1.99; 95% CI: 1.30–3.07) than those from plasma (OR = 1.36; 95% CI: 1.10–1.68), although this was not statistically significant. The combined OR for ovarian cancer was significant for studies conducted in the USA (OR = 1.41; 95% CI: 1.15–1.72), but not significant in Europe (OR = 1.18; 95% CI: 0.76–1.85). Stratifying results by CRP assay methodology, CRP markers and follow-up period showed that high-sensitivity immunotubidimetric assay, Hs-CRP, and follow-up period longer than 10 years had significant associations, whereas the association disappeared for CRP levels measured by other assays, common CRP, and a follow-up period shorter than 10 years. In addition, the associations were significant for studies adjusted for smoking, NSAIDs, and OC use, whereas no significance was found for those adjusted for age and HT use.

3.5. Influence analysis of individual studies

Sensitivity analysis was also performed to address the potential heterogeneity due to the quality of the included studies and their impact on the combined effect (Fig. 4). The combined OR in CRP levels ranged from 1.28 (95% CI: 1.01–1.63) to 1.44 (95% CI: 1.22–1.70). No substantial departure was found on these combined effects. A consistent amount of heterogeneities (ranged from 0.59 to 0.66) were detected for omission of any of the individual studies except that for Ose and colleagues' study (OR = 1.44, 95% CI: 1.22–1.70; $P_{\text{heterogeneity}} = .545$, $I^2 = 0\%$), which indicated that this particular study contributes to a great amount of the heterogeneity seen.

3.6. Publication bias

There was no evidence of publication bias as demonstrated by Begg's test ($P = .56$) and Egger's test ($P = .12$), and the near-symmetric funnel plot for the second tertile of CRP (Fig. 5A). However, the Ose and colleagues study may have introduced

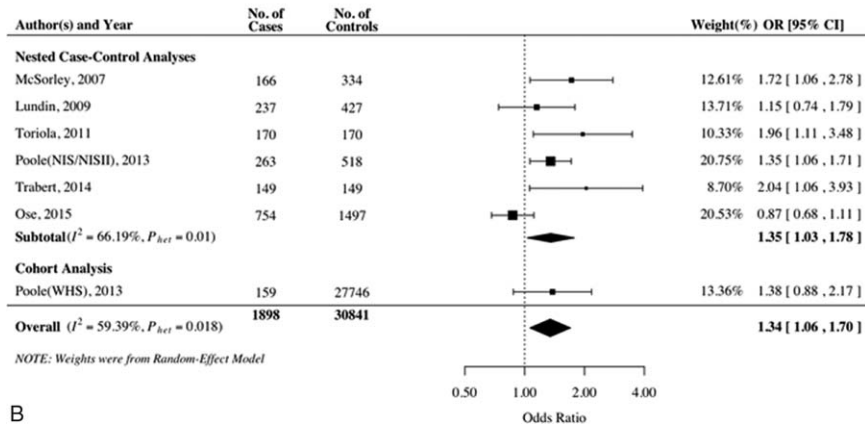
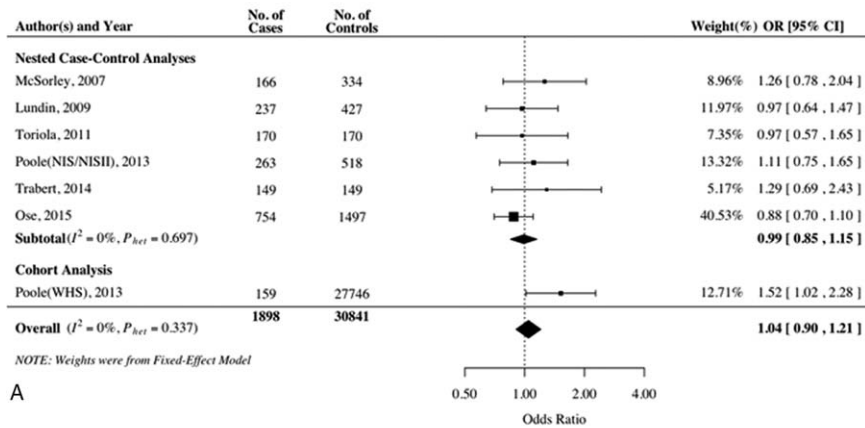


Figure 2. Forest plot for the association between the CRP level and the ovarian cancer risk. (A) The second tertile of CRP level; (B) the third tertile of CRP level. CRP = C-reactive protein.

potential publication bias upon evaluation of the risk of the third tertile CRP level (Begg's $P = .07$ and Egger's $P = .088$, respectively) (Fig. 5B).^[15]

4. Discussion

Our meta-analysis assessed the relationship between CRP levels and ovarian cancer risk. Overall, we identified a positive

association between elevated levels of CRP and an increased risk of ovarian cancer. The overall findings demonstrated an estimated 34% increased risk of ovarian cancer when comparing women in the top tertile with women in the bottom tertile. Interestingly, the risk was even stronger in women with very high CRP levels (>10 mg/L).

Inflammation has long been proposed to play a role in the etiology of ovarian cancer.^[21] The hypothesis is based on the

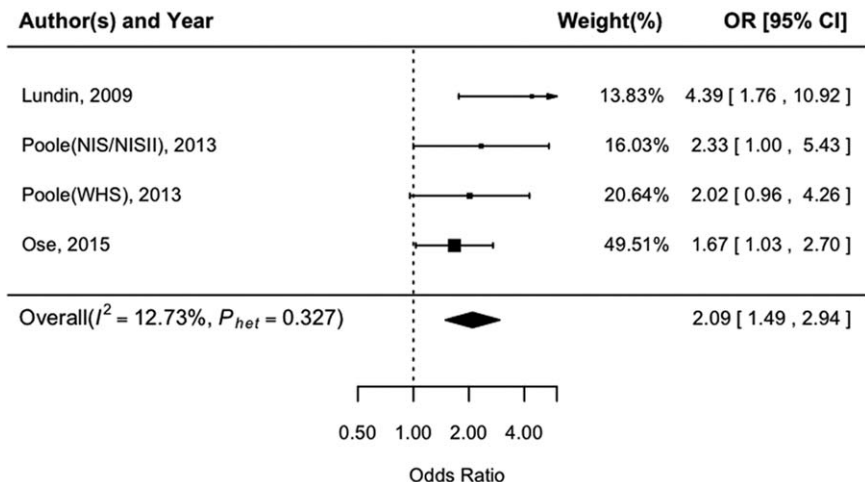


Figure 3. Odds ratio of ovarian cancer among women with a CRP level greater than 10mg/L. CRP = C-reactive protein.

Table 2
The results of subgroup-analyses.

Subgroup	Study (Ref.)	Second tertile			Third tertile		
		OR (95%CI)	I ² (%)	P _{het}	OR (95%CI)	I ² (%)	P _{het}
Country							
USA	3 ^[14,16,19]	1.29 (1.00–1.67)	0.00%	.551	1.41 (1.15–1.72)	0.00%	.507
Europe	3 ^[15,17,18]	0.91 (0.75–1.09)	0.00%	.891	1.18 (0.76–1.85)	72.12%	.032
CRP assay methodology							
High sensitivity immunotubidimetric assay	3 ^[14,17,18]	1.14 (0.92–1.42)	2.44%	.407	1.37 (1.14–1.64)	0.00%	.548
Others	3 ^[15,16,19]	0.97 (0.80–1.18)	33.06%	.268	1.37 (0.79–2.35)	77.70%	.006
CRP markers							
CRP	1 ^[19]	0.93 (0.77–1.12)	0.00%	.523	1.17 (0.75–1.83)	69.74%	.046
Hs-CRP	5 ^[14–18]	1.22 (0.98–1.53)	0.00%	.553	1.46 (1.21–1.75)	0.00%	.586
Sample							
Plasma	3 ^[14,16,18]	1.29 (0.98–1.72)	16.15%	.275	1.36 (1.10–1.68)	0.00%	.933
Serum	4 ^[16–19]	1.09 (0.73–1.64)	0.00%	.499	1.99 (1.30–3.07)	0.00%	.928
Follow-up period							
>10 years	3 ^[14,16,18]	1.07 (0.86–1.34)	0.00%	.844	1.41 (1.18–1.70)	0.00%	.412
<10 years	3 ^[15,17,19]	1.03 (0.85–1.24)	63.45%	.052	1.26 (0.78–2.03)	73.06%	.022
Main adjustment variables							
Age							
Y	3 ^[15,16,18]	0.95 (0.8–1.13)	0.00%	.619	1.29 (0.88–1.88)	70.09%	.013
N	3 ^[14,17,19]	1.29 (1.00–1.67)	0.00%	.551	1.41 (1.15–1.72)	0.00%	.507
BMI							
Y	5 ^[14–19]	1.05 (0.90–1.22)	33.73%	.24	1.28 (1.01–1.63)	58.64%	.027
N	1 ^[17]	1.26 (0.97–0.97)	–	–	1.72 (1.15–1.96)	–	–
Smoking							
Y	3 ^[16,18,19]	1.12 (0.85–1.49)	0.00%	.644	1.49 (1.12–2.00)	24.21%	.28
N	3 ^[14,15,17]	1.02 (0.86–1.20)	47.16%	.133	1.26 (0.92–1.74)	71.20%	.014
Parity							
Y	5 ^[14–19]	1.05 (0.90–1.22)	33.73%	.24	1.28 (1.01–1.63)	58.64%	.027
N	1 ^[17]	1.26 (0.97–0.97)	–	–	1.72 (1.15–1.96)	–	–
NSAIDs use							
Y	2 ^[16,18]	1.12 (0.85–1.49)	0.00%	.644	1.49 (1.12–2.00)	24.21%	.28
N	4 ^[14,15,17,19]	1.02 (0.86–1.20)	47.16%	.133	1.26 (0.92–1.74)	71.20%	.014
HT use							
Y	3 ^[16,18,19]	1.06 (0.75–1.50)	0.00%	.46	1.38 (0.95–1.98)	50.53%	.155
N	3 ^[14,15,17]	1.04 (0.89–1.22)	39.70%	.179	1.33 (1.00–1.77)	67.74%	.012
OC use							
Y	3 ^[14,18,19]	1.19 (0.96–1.49)	0.00%	.471	1.36 (1.13–1.63)	0.01%	.566
N	3 ^[15,16,17]	0.94 (0.78–1.14)	4.20%	.413	1.36 (0.80–2.31)	78.48%	.005

BMI=body mass index, CI=confidence intervals, CRP=C-reactive protein, Hs-CRP=high-sensitivity C-reactive protein, HT=hormone therapy, N=not included, NSAIDs=nonsteroidal anti-inflammation drugs, OC=oral contraceptive, OR=odds ratio, Y=included.
I² is interpreted as the proportion of total variation across studies that are due to heterogeneity than chance.

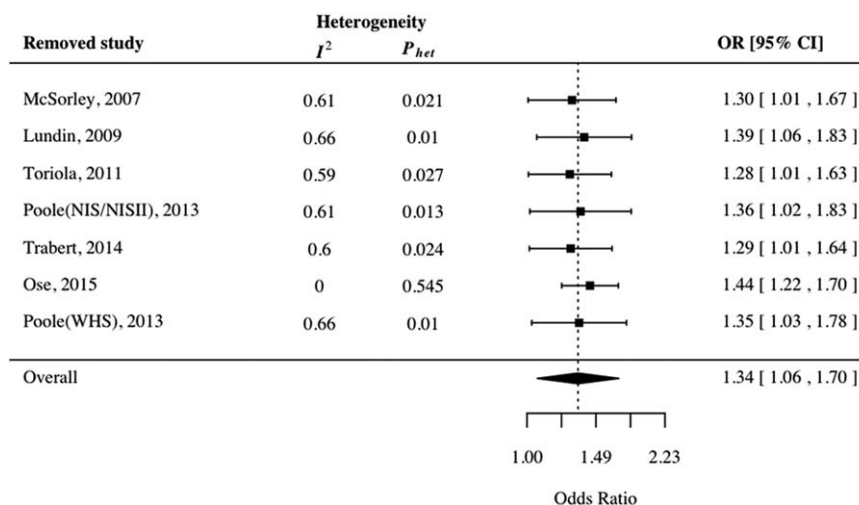


Figure 4. Influence analysis for omitting individual study on the summary odds ratio.

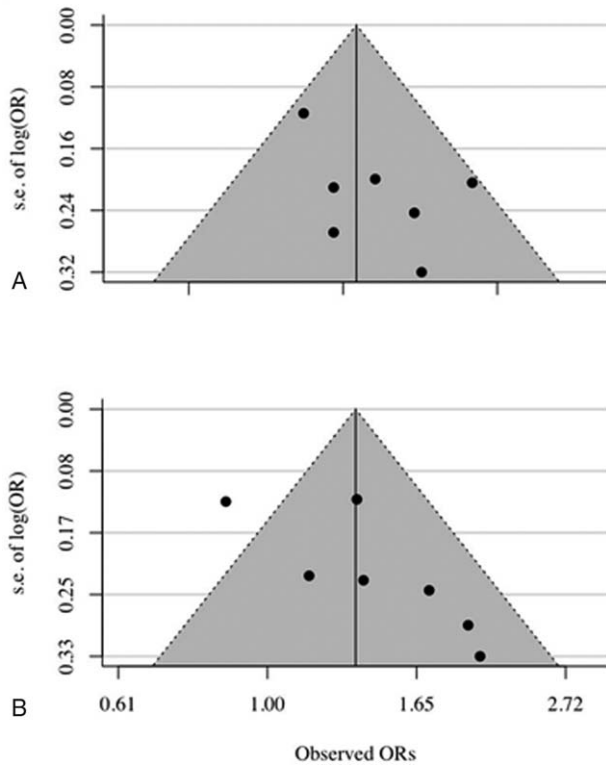


Figure 5. Funnel plot for analysis results of publication bias. (A) The second tertile of CRP level; (B) the third tertile of CRP level. CRP = C-reactive protein.

observations linking conditions associated with inflammation such as ovulation, pelvic inflammatory disease, endometriosis, and polycystic ovary syndrome with increased ovarian cancer risk.^[5,6,22–24] Consistent with this hypothesis, factors that reduce ovarian inflammation by inhibiting exogenous and endogenous irritants affecting the ovaries (e.g., tubal ligation, hysterectomy, or the use of NSAIDs) may offer protection against ovarian cancer.^[25–30] The acute-phase reactant C-reactive protein is a member of the pentraxin protein family and is a definitive biomarker of systemic inflammation.^[31] CRP is commonly used to evaluate the severity of systemic inflammation and outcomes of a variety of inflammation-related disorders.^[32] Normally, more than 70% of the population has a low CRP concentration (<0.3 mg/dL), whereas serum CRP levels in cancer patients is significantly higher.^[10,33] A plausible explanation is that tumor cells secrete a series of cytokines that strongly stimulate CRP production in the liver.^[34,35] Herein, serum CRP levels of cancer patients could be an indirect indicator of cancer-related inflammation.

Few epidemiological studies have focused on the association between CRP levels and ovarian cancer risk. A recent meta-analysis including 5 prospective studies reported a significant positive association between the CRP level and the ovarian cancer risk, with 995 cases and moderate heterogeneity between studies ($I^2=66.0\%$).^[14] Since then, 2 large-scale prospective studies have been published, adding 903 cases and 1646 controls to the evidence.^[15,19] Therefore, this updated systematic review and meta-analysis expanded the number of ovarian cancer cases evaluated to 1898 and the summary risk estimate revealed reduced heterogeneity ($I^2=59.39\%$) in contrast to the prior study.

Results from subgroup analysis showed that the country of origin, CRP assay methodology, CRP markers, sample sources and adjustment variables of age, smoking, NSAIDs use, HT use and OC use might be possible sources of heterogeneity. Despite considering the limitation of subgroup analysis to explain heterogeneity and the above variables were not recognized as precise sources of heterogeneity amongst studies, a few findings from the subgroup analysis warrant noting. The highest combined OR in the CRP level was found in the sample source from serum, which revealed that the differences of sample sources might confer the association seen between elevated levels of CRP and an increased risk of ovarian cancer. However, it might in turn suggest that measuring CRP from serum is a more sensitive approach compared with that from plasma. Similarly, Hs-CRP, as an inflammatory biomarker, may be more sensitive than common CRP in predicting ovarian cancer risk. Furthermore, our results demonstrated that smoking, NSAIDs use, HT use, and OC use might be influential factors for the ovarian cancer risk. As the largest prospective study to date, the Ose and colleagues study found no overall association between the CRP level and an elevated risk of ovarian cancer with the exception of women with increased CRP concentrations greater than 10 mg/L, which might be an important influential factor for the heterogeneity seen in the sensitivity analysis. Further accumulation of large-scale studies is anticipated to help improve the precision of the estimation and provide more comprehensive evaluation of these issues.

On evaluating findings from this meta-analysis, several limitations should be considered. First, heterogeneity existed among the studies in the meta-analysis, including different countries of origin, CRP diagnosis methods, CRP markers, smoking or parity status, NSAIDs use, HT use, and OC use. Therefore, the random-effects model meta-analysis was used to combine data whenever significant heterogeneity was found. Furthermore, sensitivity and subgroup analyses were performed to investigate potential sources of heterogeneity and appropriate inclusion criteria used to maximize homogeneity. Second, the number of studies included in this meta-analysis is relatively small. This resulted from performing a comprehensive and carefully literature search to identify relevant articles with results stratified by adjusted variables of BMI and parity status as not all studies involved here provided relevant information. Third, cancer is a heterogeneous disease and different histological types and clinical staging may influence the treatment and prognosis. Limited by the finite data, the analysis for the association between CRP levels and ovarian cancer risk stratified by histological type and staging could not be performed.

In summary, our findings supported a positive association between elevated CRP levels and an increased risk of ovarian cancer. These results indicated a role of chronic inflammation in ovarian carcinogenesis. Further studies, especially stringent and large-scale case-control studies are needed to definitively identify CRP as a direct player in ovarian carcinogenesis.

References

- [1] Torre LA, Bray F, Siegel RL, et al. Global cancer statistics, 2012. *CA Cancer J Clin* 2015;65:87–108.
- [2] Siegel RL, Miller KD, Jemal A. Cancer statistics, 2015. *CA Cancer J Clin* 2015;65:5–29.
- [3] Jayson GC, Kohn EC, Kitchener HC, et al. Ovarian cancer. *Lancet* 2014;384:1376–88.
- [4] Sundar S, Neal RD, Kehoe S. Diagnosis of ovarian cancer. *BMJ* 2015;351:h4443.

- [5] Risch HA, Howe GR. Pelvic inflammatory disease and the risk of epithelial ovarian cancer. *Cancer Epidemiol Biomarkers Prev* 1995; 4:447–51.
- [6] Brinton LA, Gridley G, Persson I, et al. Cancer risk after a hospital discharge diagnosis of endometriosis. *Am J Obstet Gynecol* 1997; 176:572–9.
- [7] Shan W, Liu J. Inflammation: a hidden path to breaking the spell of ovarian cancer. *Cell Cycle* 2009;8:3107–11.
- [8] Wernli KJ, Newcomb PA, Hampton JM, et al. Inverse association of NSAID use and ovarian cancer in relation to oral contraceptive use and parity. *Br J Cancer* 2008;98:1781–3.
- [9] Gabay C, Kushner I. Acute-phase proteins and other systemic responses to inflammation. *N Engl J Med* 1999;340:448–54.
- [10] Trichopoulos D, Psaltopoulou T, Orfanos P, et al. Plasma C-reactive protein and risk of cancer: a prospective study from Greece. *Cancer Epidemiol Biomarkers Prev* 2006;15:381–4.
- [11] Heikkilä K, Harris R, Lowe G, et al. Associations of circulating C-reactive protein and interleukin-6 with cancer risk: findings from two prospective cohorts and a meta-analysis. *Cancer Causes Control* 2009;20:15–26.
- [12] Dossus L, Rinaldi S, Becker S, et al. Obesity, inflammatory markers, and endometrial cancer risk: a prospective case-control study. *Endocr Relat Cancer* 2010;17:1007–19.
- [13] Dossus L, Jimenez-Corona A, Romieu I, et al. C-reactive protein and postmenopausal breast cancer risk: results from the E3N cohort study. *Cancer Causes Control* 2014;25:533–9.
- [14] Poole EM, Lee IM, Ridker PM, et al. A prospective study of circulating C-reactive protein, interleukin-6, and tumor necrosis factor alpha receptor 2 levels and risk of ovarian cancer. *Am J Epidemiol* 2013;178:1256–64.
- [15] Ose J, Schock H, Tjønneland A, et al. Inflammatory markers and risk of epithelial ovarian cancer by tumor subtypes: the EPIC cohort. *Cancer Epidemiol Biomarkers Prev* 2015;24:951–61.
- [16] McSorley MA, Alberg AJ, Allen DS, et al. C-reactive protein concentrations and subsequent ovarian cancer risk. *Obstet Gynecol* 2007;109:933–41.
- [17] Toriola AT, Grankvist K, Agborsangaya CB, et al. Changes in pre-diagnostic serum C-reactive protein concentrations and ovarian cancer risk: a longitudinal study. *Ann Oncol* 2011;22:1916–21.
- [18] Lundin E, Dossus L, Clendenen T, et al. C-reactive protein and ovarian cancer: a prospective study nested in three cohorts (Sweden, USA, Italy). *Cancer Causes Control* 2009;20:1151–9.
- [19] Trabert B, Pinto L, Hartge P, et al. Pre-diagnostic serum levels of inflammation markers and risk of ovarian cancer in the prostate, lung, colorectal and ovarian cancer (PLCO) screening trial. *Gynecol Oncol* 2014;135:297–304.
- [20] Viechtbauer W. Conducting meta-analyses in R with the metafor package. *J Stat Softw* 2010;36:59593.
- [21] Ness RB, Cottreau C. Possible role of ovarian epithelial inflammation in ovarian cancer. *J Natl Cancer Inst* 1999;91:1459–67.
- [22] Espey LL. Current status of the hypothesis that mammalian ovulation is comparable to an inflammatory reaction. *Biol Reprod* 1994;50:233–8.
- [23] Fleming JS, Beaugie CR, Haviv I, et al. Incessant ovulation, inflammation and epithelial ovarian carcinogenesis: revisiting old hypotheses. *Mol Cell Endocrinol* 2006;247:4–21.
- [24] Schildkraut JM, Schwingl PJ, Bastos E, et al. Epithelial ovarian cancer risk among women with polycystic ovary syndrome. *Obstet Gynecol* 1996;88:554–9.
- [25] Hankinson SE, Hunter DJ, Colditz GA, et al. Tubal ligation, hysterectomy, and risk of ovarian cancer. A prospective study. *JAMA* 1993;270:2813–8.
- [26] Loft A, Lidegaard O, Tabor A. Incidence of ovarian cancer after hysterectomy: a nationwide controlled follow up. *Brit J Obstet Gynaecol* 1997;104:1296–301.
- [27] Green A, Purdie D, Bain C, et al. Tubal sterilisation, hysterectomy and decreased risk of ovarian cancer. Survey of Women's Health Study Group. *Int J Cancer* 1997;71:948–51.
- [28] Cramer DW, Harlow BL, Titus-Ernstoff L, et al. Over-the-counter analgesics and risk of ovarian cancer. *Lancet* 1998;351:104–7.
- [29] Rosenberg L, Palmer JR, Rao RS, et al. A case-control study of analgesic use and ovarian cancer. *Cancer Epidemiol Biomarkers Prev* 2000; 9:933–7.
- [30] Schildkraut JM, Moorman PG, Halabi S, et al. Analgesic drug use and risk of ovarian cancer. *Epidemiology* 2006;17:104–7.
- [31] Guthrie GJ, Roxburgh CS, Horgan PG, et al. Does interleukin-6 link explain the link between tumour necrosis, local and systemic inflammatory responses and outcome in patients with colorectal cancer? *Cancer Treat Rev* 2013;39:89–96.
- [32] van Leeuwen MA, van der Heijde DM, van Rijswijk MH, et al. Interrelationship of outcome measures and process variables in early rheumatoid arthritis. A comparison of radiologic damage, physical disability, joint counts, and acute phase reactants. *J Rheumatol* 1994; 21:425–9.
- [33] Kushner I. The phenomenon of the acute phase response. *Ann N Y Acad Sci* 1982;389:39–48.
- [34] Kinoshita T, Ito H, Miki C. Serum interleukin-6 level reflects the tumor proliferative activity in patients with colorectal carcinoma. *Cancer* 1999;85:2526–31.
- [35] Okamoto M, Hattori K, Oyasu R. Interleukin-6 functions as an autocrine growth factor in human bladder carcinoma cell lines in vitro. *Int J Cancer* 1997;72:149–54.