



Comparative efficacy and safety of adenosine and regadenoson for assessment of fractional flow reserve: A systematic review and meta-analysis

Gauravpal Singh Gill, Akshaya Gadre, Arun Kanmanthareddy

Specialty type: Cardiac and cardiovascular systems

Provenance and peer review: Invited article; Externally peer reviewed.

Peer-review model: Single blind

Peer-review report's scientific quality classification

Grade A (Excellent): 0
Grade B (Very good): B, B
Grade C (Good): 0
Grade D (Fair): 0
Grade E (Poor): 0

P-Reviewer: Kharlamov AN, Netherlands

Received: April 13, 2021

Peer-review started: April 13, 2021

First decision: October 17, 2021

Revised: November 21, 2021

Accepted: April 26, 2022

Article in press: April 26, 2022

Published online: May 26, 2022



Gauravpal Singh Gill, Arun Kanmanthareddy, Cardiovascular Medicine, Creighton University School of Medicine, Omaha, NE 68124, United States

Akshaya Gadre, Internal Medicine, Western Michigan University Homer Stryker MD School of Medicine, Kalamazoo, MI 49007, United States

Corresponding author: Arun Kanmanthareddy, MD, MS, Assistant Professor, Cardiovascular Medicine, Creighton University School of Medicine, 7710 Mercy Road, Suite 401, Omaha, NE 68124, United States. akanmantha@gmail.com

Abstract

BACKGROUND

Adenosine is a coronary hyperemic agent used to measure invasive fractional flow reserve (FFR) of intermediate severity coronary stenosis.

AIM

To compare FFR assessment using adenosine with an alternate hyperemic agent, regadenoson.

METHODS

PubMed, Google Scholar, CINAHL and Cochrane databases were queried for studies comparing adenosine and regadenoson for assessment of FFR. Data on FFR, correlation coefficient and adverse events from the selected studies were extracted and analyzed by means of random effects model. Two tailed *P*-value less than 0.05 was considered significant. Heterogeneity was assessed using *I*² test.

RESULTS

Five studies with 248 patients were included in the final analysis. All included patients and coronary lesions underwent FFR assessment using both adenosine and regadenoson. There was no significant mean difference between FFR measurement by the two agents [odds ratio (OR) = -0.00; 95% confidence interval (CI): (-0.02)-0.01, *P* = 0.88]. The cumulative correlation coefficient was 0.98 (0.96-0.99, *P* < 0.01). Three of five studies reported time to FFR with cumulative results favoring regadenoson (mean difference 34.31 s; 25.14-43.48 s, *P* < 0.01). Risk of adverse events was higher with adenosine compared to regadenoson (OR = 2.39; 95%CI: 1.22-4.67, *P* = 0.01), which most commonly included bradycardia and hypotension. Vast majority of the adverse events associated with both agents were

transient.

CONCLUSION

The performance of regadenoson in inducing maximal hyperemia was comparable to that of adenosine. There was excellent correlation between the FFR measurements by both the agents. The use of adenosine, was however associated with higher risk of adverse events and longer time to FFR compared to regadenoson.

Key Words: Adenosine; Regadenoson; Fractional flow reserve; Meta-analysis

©The Author(s) 2022. Published by Baishideng Publishing Group Inc. All rights reserved.

Core Tip: Regadenoson has comparable efficacy in inducing maximal coronary hyperemia in patients undergoing invasive coronary angiography with lower risk of side effects compared to adenosine. To compare fractional flow reserve (FFR) assessment using adenosine with an alternate hyperemic agent, regadenoson. PubMed, Google Scholar, CINAHL and Cochrane databases were queried for studies comparing adenosine and regadenoson for assessment of FFR. There was excellent correlation between the FFR measurements by both the agents. The use of adenosine, was however associated with higher risk of adverse events and longer time to FFR compared to regadenoson.

Citation: Gill GS, Gadre A, Kanmanthareddy A. Comparative efficacy and safety of adenosine and regadenoson for assessment of fractional flow reserve: A systematic review and meta-analysis. *World J Cardiol* 2022; 14(5): 319-328

URL: <https://www.wjgnet.com/1949-8462/full/v14/i5/319.htm>

DOI: <https://dx.doi.org/10.4330/wjc.v14.i5.319>

INTRODUCTION

Coronary angiography has long been the gold standard for assessment of severity of coronary artery disease[1]. This modality is however limited to providing anatomic information with little physiologic and clinical correlation, and more notably has marked intra- and inter-observer variability with very little reproducibility[2,3]. Data has shown that reliability on angiography for assessment of stenosis to perform percutaneous coronary intervention may, in fact, result in higher rates of revascularization procedures without significant improvement in clinical outcomes[4]. Physiologic assessment of coronary stenosis is achieved through use of fractional flow reserve (FFR) which is the ratio of intracoronary pressures distal and proximal to the lesion. The distal pressure measurement can be recorded using a pressure wire sensor placed distal to the lesion and the proximal pressure can be recorded *via* the guide catheter. The resting FFR measurement may not unmask the true physiological significance of the lesion and is better unmasked under maximal coronary hyperemic conditions with the use of agents such as adenosine. This is especially useful in assessing hemodynamic significance of intermediate severity stenosis as shown by the FFR *vs* angiography for guiding percutaneous coronary intervention (FAME) and FFR-guided percutaneous coronary intervention plus optimal medical treatment *versus* optimal medical treatment alone in patients with stable coronary artery disease (FAME 2) trials[5,6].

Adenosine is the gold standard to achieve maximal hyperemia for adequate measurement of FFR, however due to non-selective receptor activation, it may cause transient shortness of breath, atrio-ventricular conduction blockade and chest pain. Regadenoson on the other hand is a selective A_{2A} receptor agonist and has a more favorable side effect profile and straightforward dosing (400 µg *vs* variable weight-based infusion dosing for adenosine, *i.e.*, 140 µg/kg/min for 2 min). Herein, we systematically reviewed published literature comparing the efficacy of regadenoson to adenosine for achieving maximal hyperemia, the correlation in FFR measurements, and the adverse effects to ascertain the safer and more cost-effective hyperemic agent.

MATERIALS AND METHODS

This investigation was conducted in accordance with the Cochrane collaboration guidelines and the results have been reported per the PRISMA statement[7]. Literature review was performed independently by two authors (Gill GS, Gadre A) in PubMed, Cochrane, CINAHL and Google Scholar

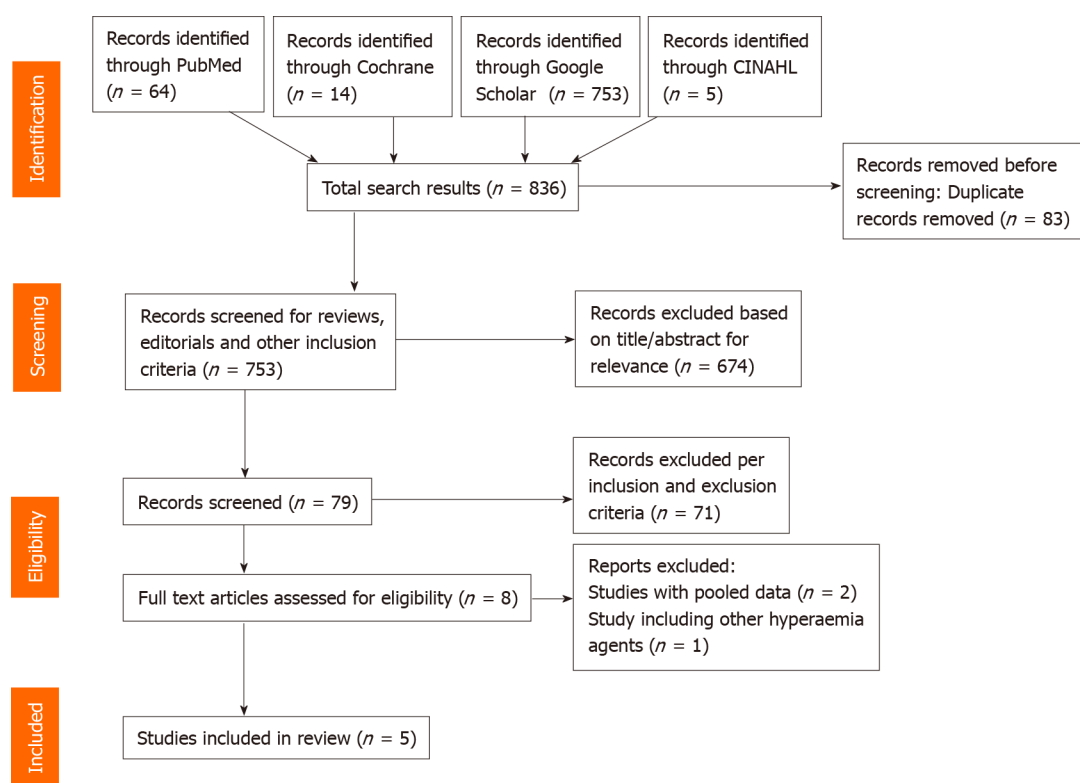
Table 1 Study characteristics of included investigations

Ref.	Country	Patients (n)	Population	Enrollment period	Adenosine dosing	Regadenoson dosing	Inclusion/exclusion criteria	Measured outcomes
Nair <i>et al</i> [10], 2011	United States	25	Prospective, single-center	July 2009-December 2010	IV adenosine infusion at 140 µg/kg/min	IV regadenoson bolus 400 µg	Inclusion: Elective angiography, intermediate stenosis (40%-70%), remainder per ADVANCE trial (2)	FFR correlation, flushing, dyspnea, headache, chest discomfort, nausea, diaphoresis, metallic taste
Arumugham <i>et al</i> [11], 2013	United States	20	Prospective, single-center	October 2009-September 2010	IV adenosine infusion at 175 µg/kg/min	IV regadenoson bolus 400 µg	Inclusion: Intermediate stenosis (50%-80%). Exclusion: STEMI within 5 d, significant left main coronary artery stenosis, heart block, pregnancy, asthma or hypersensitive to either adenosine or regadenoson	FFR correlation, time to achieve FFR, effect on blood pressure and heart rate, heart block, bronchospasm, severe chest pain
Prasad <i>et al</i> [12], 2014	United States	57 ¹	Prospective, multi-center	May 2011-November 2011	IV adenosine at 140 µg/kg/min	IV regadenoson bolus 400 µg	Inclusion: Intermediate stenosis (50%-70%). Exclusion: Age < 18 years old, 3-vessel CAD, ACS within 1 wk, prior MI in territory supplied by target lesion, hypersensitivity to adenosine or regadenoson, reactive airway disease, 2 nd or 3 rd heart block, currently receiving dipyridamole, hemodynamic instability	FFR correlation, blood pressure, change in heart rate, dizziness, shortness of breath, heart block, flushing, arrhythmias
Van Nunen <i>et al</i> [13], 2015	Netherlands	100	Prospective, single-center	NA	IV adenosine at 140 µg/kg/min	IV regadenoson bolus 400 µg	Inclusion: Ages 18-80 years old, lesions in proximal to mid coronary artery segments, at least 2 mm diameter, > 30% stenosis. Exclusion: Severe AS, 2 nd -3 rd heart block, acute MI within 5 d, bradycardia, severe hypotension, tortuous/calcified coronary vessels, severe asthma, pregnancy, inability to obtain femoral approach, dipyridamole within 48 h and methylxanthines within 12 h	FFR correlation, heart block, chest discomfort, blood pressure, heart rate, shortness of breath, nausea
Edward <i>et al</i> [14], 2018	United States	46	Prospective, single-center	April 2012-May 2014	IV adenosine at 140 µg/kg/min	IV regadenoson bolus 400 µg	Inclusion: Elective angiography, < 30%, >90% stenosis. Exclusion: Sinus node dysfunction, 2 nd -3 rd degree AV block without pacemaker, severe hypotension, acute MI within 30 d, severe AS, pregnancy, aberrant coronary anatomy or calcification	FFR correlation, time to reversal with aminophylline, side effects

¹60 lesions from 57 patients were included in the analysis.

IV: Intra-venous; STEMI: ST-segment elevation myocardial infarction; FFR: Fractional flow reserve; CAD: Coronary artery disease; ACS: Acute coronary syndrome; MI: Myocardial infarction; AV: Atrioventricular; AS: Aortic stenosis; NA: Not available; IC: Intra-coronary.

databases using the keywords “adenosine”, “regadenoson”, “fractional flow reserve”, “FFR” and “hyperemia” in different combinations. 836 titles and abstracts were found, of which 83 were removed as duplicate. Of the remaining 753 titles, 674 were excluded based on title and abstract. 79 abstracts, original investigations, editorials and review articles were screened to assess for inclusion and exclusion criteria. Eight articles and their references were manually screened for any additional studies that could qualify for inclusion, of which, three were excluded from final analysis (systemic review, retrospective and pooled analyses) (Figure 1). The five included studies met following criteria: (1) Published as full manuscripts in English; (2) Involved patients with angiographic evidence of coronary artery stenosis; and (3) Assessed and reported at least one of the outcomes (FFR correlation, time to achieve FFR, adverse effects) with both adenosine and regadenoson. The following studies were excluded: (1) Duplicates of previous publications; (2) Pooled studies and systematic reviews; (3) Studies that included comparison of adenosine or regadenoson with nicorandil; (4) Abstracts, editorials, reviews, and commentaries; and (5) Animal studies. Any disagreement during the study screening and selection



DOI: 10.4330/wjc.v14.i5.319 Copyright ©The Author(s) 2022.

Figure 1 Flowchart depicting study selection for inclusion in the meta-analysis.

process was resolved by consensus among all authors.

The primary outcome of interest was FFR correlation, and secondary outcomes were time to achieve FFR, and a composite of all reported adverse effects. Data extraction was performed using a standardized data extraction form by two independent authors (Gill GS, Gadre A). Any disagreement on data was resolved by consensus among all authors. For all outcomes in our analyses, pooled odds ratio (OR) with their corresponding 95% confidence intervals (CIs) were calculated using the Mantel-Haenszel random-effects model for dichotomous variables and Inverse variance model for the continuous variables, and presented as Forest plots[8]. For the correlation coefficient Fisher's Z transformation was performed and reverse transformation with restricted maximum likelihood method to obtain meta-summary correlation coefficient. Heterogeneity across the studies was assessed using the chi-square-based Cochrane Q test and quantified using I^2 statistics. I^2 index values of < 25%, 25%-50% and > 50% were considered low, intermediate, and high heterogeneity, respectively[9]. Exclusion sensitivity analysis was performed by excluding one study at a time and repeating the analysis. Publication bias was assessed using Begg's dissemination selectivity test and visually inspected using funnel plots. All analyses were conducted using the Review Manager Version 5.4 software, STATA software version 16 (StataCorp 2019, College Station, TX, United States) and the IBM SPSS software Version 26 (IBM Corp, Armonk, NY, United States). There was no duplicate data within included studies. A two-sided P value of < 0.05 was considered statistically significant.

RESULTS

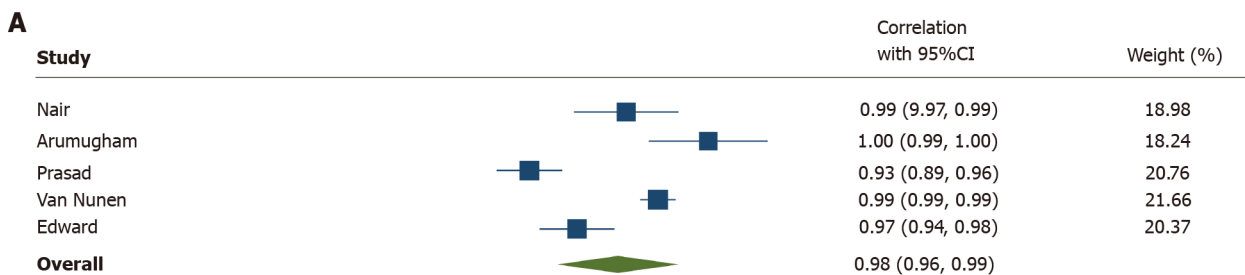
A total of eight investigations were reviewed to include five prospective studies involving 248 patients undergoing FFR analysis for 251 lesions in the final meta-analysis (Figure 1 and Table 1)[10-14]. A flowsheet of the study selection process in accordance with the PRISMA guidelines is shown in Figure 1. Study designs, infusion protocols, inclusion and exclusion criteria, and reported outcomes are represented in Table 1; and baseline characteristics of patients are reported in Table 2. Mean age of the study population was 63 years with women accounting for 25% of the participants. All studies were prospective with all 248 patients receiving both IV adenosine and IV regadenoson in a sequential manner.

FFR correlation was reported in all five studies. The cumulative correlation coefficient for FFR measurement was 0.98 (95%CI: 0.96-0.99) with I^2 estimate for heterogeneity at 93% (Figure 2A). Mean difference in measured FFR values with adenosine and regadenoson in pooled analysis was -0.00 [95%CI: (-0.02)-0.01; P = 0.88], with I^2 estimate for heterogeneity 0%. An exclusionary sensitivity analysis

Table 2 Baseline characteristics of patients from studies included in the meta-analysis

	Nair <i>et al</i> [10]	Arumugham <i>et al</i> [11]	Prasad <i>et al</i> [12]	van Nunen <i>et al</i> [13]	Edward <i>et al</i> [14]
Number	25	20	57 (60 lesions)	100	46
Age [yrs \pm SD or yrs (CIs)]	63 \pm 11	63.9 \pm 9	57 \pm 8	66 \pm 8	63 \pm 10
Women, <i>n</i> (%)	12 (48)	4 (20)	10 (18)	25 (25)	9 (20)
Body mass index (mean \pm SD)	30.0 \pm 5.7	NA	27.7 \pm 4.1	26.7; H kg	33 \pm 7
Hypertension, <i>n</i> (%)	21 (84)	NA	51 (90)	54	44 (96)
Diabetes mellitus, <i>n</i> (%)	6 (24)	NA	26 (46)	21	26 (57)
Hyperlipidemia, <i>n</i> (%)	21 (84)	NA	39 (68)	36	44 (96)
Tobacco use, <i>n</i> (%)	8 (32)	NA	24 (42)	20	7 (15)
CKD, <i>n</i> (%)	NA	NA	NA	NA	9 (20)
Prior MI, <i>n</i> (%)	5 (20)	NA	23 (40)	36	NA
Prior PCI, <i>n</i> (%)	8 (32)	NA	NA	43	NA

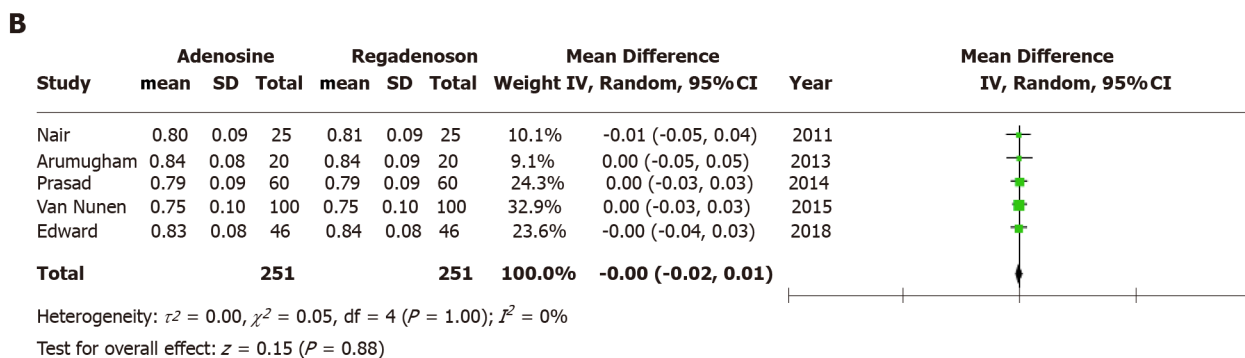
CI: Confidence interval; CKD: Chronic kidney disease; MI: Myocardial infarction; PCI: Percutaneous intervention; NA: Not available.



Heterogeneity: $\tau^2 = 0.28$, $I^2 = 93.45\%$, $H^2 = 15.27$

Test of $\theta = 0$: $z = 9.54$, $P = 0.00$

Random-effects REML model



DOI: 10.4330/wjc.v14.i5.319 Copyright ©The Author(s) 2022.

Figure 2 Primary outcomes – adenosine *versus* regadenoson cumulative. A: correlation coefficient for fractional flow reserve (FFR) measurements; B: Mean difference in FFR measures. CI: Confidence interval.

was performed with exclusion of studies with lesions including low- and high-grade stenosis (Van Nunen *et al*[13] and Edward *et al*[14]), where results remained consistent with mean difference -0.00 [(-0.03)-0.02; $P = 0.92$] (Figure 2B). Time to achieve FFR was reported in three of five studies, and was significantly lower with regadenoson with a mean difference of 34.31 s (95%CI: 25.14-43.48 s; $P < 0.01$) (Figure 3A). The degree of heterogeneity albeit higher than remainder results, was still moderate with I^2 index = 41% in this three-study analysis.

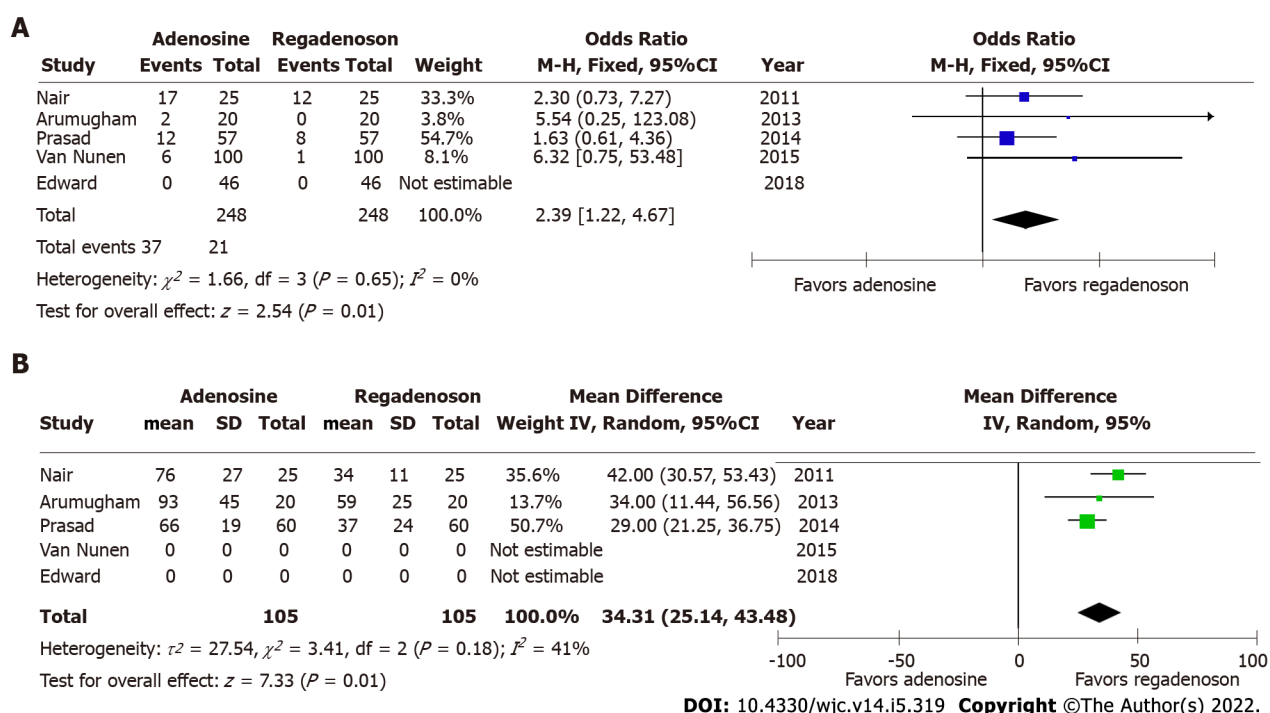


Figure 3 Secondary outcomes. A: Adverse event rates; B: Time to achieve fractional flow reserve (FFR) with adenosine versus regadenoson induced hyperemia for FFR measurement. CI: Confidence interval.

Pooled odds for any adverse effect were significantly higher for patients after administration of adenosine, than after receiving regadenoson (OR = 2.39, 95%CI: 1.22-4.67; $P = 0.01$) (Figure 3B). There was no evident heterogeneity among included studies with I^2 estimated at 0%. There was no evidence of dissemination bias on visual inspection of the funnel plot and Begg's test. There were no adverse effects reported in either arm of the study by Edward *et al* [14] among forty-six participants in the analysis where aminophylline were administered after regadenoson, while side effects reported in other studies were only transient and did not necessitate discontinuation of infusion or FFR measurement. In the study by Arumugham *et al* [11], a higher dose of IV adenosine was infused, while significant adverse event rates were not higher.

DISCUSSION

The major findings of this analysis are: (1) FFR correlation was excellent among both IV adenosine and IV regadenoson; (2) IV regadenoson achieved maximal hyperemia in a shorter interval; and (3) Adverse effects, including transient atrioventricular conduction block, chest pain, shortness of breath, hypotension, flushing and headache were higher with adenosine. Anatomic as well as physiologic assessment of coronary vasculature are integral elements to defining coronary artery disease in a patient. Over the past few decades, there have been advances in anatomic evaluation beyond traditional angiography, and have included developments in intravascular imaging, such as, intravascular ultrasound and optical coherence tomography. Studies comparing translation of anatomic *vs* physiologic assessment of coronary artery disease into clinical outcomes have concluded in comparable results [15]. Furthermore, investigations attempting to correlate optimum minimal lumen area to FFR values have concluded that their reciprocity may be vessel dependent [16]. This can be explained by the independent role of these modalities in assessing flow and identifying vulnerable plaques, respectively [17]. Due to easy availability and low cost, FFR based assessment of intermediate stenosis has been widely incorporated to practice.

Adenosine has traditionally been the gold standard for inducing maximal hyperemia while measuring FFR, although different agents have been investigated for efficacy and side effects with comparable results [10-14,18-22]. There is excellent correlation in FFR estimated by adenosine and regadenoson which is consistent with prior studies that have shown both agents achieve comparable hyperemia in animal as well as human models [23,24]. Adenosine is a non-selective activator of 4 receptors, A_1 , A_{2A} , A_{2B} and A_3 [25]. The activation of A_1 and A_3 receptor subtypes decreases cyclic adenosine monophosphate (cAMP) levels while activation of receptors A_{2A} and A_{2B} increases the cAMP levels [26]. cAMP is an important mediator of smooth muscle relaxation and therefore, activation of A_{2A} and A_{2B} receptors leads to coronary and peripheral arterial vasodilation and hyperemia. The non-

selective receptor activation by adenosine also causes bronchoconstriction and other side effects. Regadenoson, however, is a selective A_{2A} receptor agonist, and thus causes preferential coronary vasodilation with fewer side effects when compared to adenosine[27]. In cases where patients may experience adverse effects from regadenoson, they can be reversed using intravenous aminophylline[14, 28]. This easy reversibility makes physiologic evaluation feasible in patients with mild-to-moderate reactive airway disease and obstructive airway disease[27]. Another secondary outcome, time to FFR, was also shorter in patients who received regadenoson, thus favoring its use. This can potentially be explained by the non-weight-based bolus dosing of intravenous regadenoson, accommodated by the longer half-life (2-4 min) when compared to weight-based infusion of intravenous adenosine, which is administered preferably through central venous access due to its extremely short half-life (0.6-10 s). Because of its short half-life, administration of adenosine is challenging and could be time consuming. Our study results show that time to maximal hyperemia is shorter by about 30 s with the use of regadenoson. Further, this time does not take in to account the time taken for preparing the adenosine infusion which could take up to several minutes. This could potentially increase the duration of the procedure, and therefore, use of regadenoson may save valuable time for the catheterization laboratory and its staff while potentially leading to cost benefits despite the higher price of regadenoson.

As discussed above, our study demonstrates lower risk of adverse effects with regadenoson use. In study by Arumugham *et al*[11], a higher adenosine infusion rate was used (175 µg/kg/min), and to negate its effects, we conducted an exclusionary sensitivity analysis, where results remained similar ($P = 0.02$). We then conducted sensitivity analysis using jackknife approach for another secondary outcome, time to FFR, where heterogeneity was moderate with $I^2 = 41\%$ in the overall analysis. Here, we systematically excluded one study at a time, and noted a reduction in I^2 to 0% with exclusion of study by Nair *et al*[10], the oldest investigation. Outcome favoring regadenoson use remained unchanged ($P < 0.01$). Lastly, two of the five included studies did not limit the lesions to intermediate stenosis and a sensitivity analysis was conducted by excluding these investigations. The results remained unchanged with significant correlation between estimated FFRs ($P = 0.92$, $I^2 = 0\%$).

The decision to use one agent over the other is further influenced by factors such as requirement of central venous access and cost. Although adenosine can be administered both *via* central or peripheral access, the onset of action is earlier and steady state hyperemia is more stable with central venous catheter. Regadenoson, on the other hand, has limitations including cost and unpredictability in the duration of hyperemia[13]. For this reason, regadenoson may not be the ideal agent, especially when evaluating multiple coronary arteries, and will require multiple dose administrations with incremental increase in the costs[29]. Regadenoson has near completely replaced adenosine for nuclear stress testing because of the ease of its administration and relatively fewer side effects and therefore is more appealing to be used for invasive FFR assessment. Our meta-analysis results clearly demonstrate that regadenoson is an acceptable alternative to adenosine for invasive FFR assessment of intermediate severity coronary stenosis.

Limitations and strengths

Our meta-analysis has inherent limitations as well as those inherited from the included studies. First, among the studies included in this meta-analysis, there is considerable variability in the definition of intermediate severity stenosis. Second, the study by Arumugham *et al*[11] used a higher adenosine infusion rate when compared to other investigations in an attempt to mitigate effects of deactivation of peripherally administered adenosine. This variability in dosing may have affected all outcomes, and potentially, strengthened the association between adenosine use and adverse effects. Third, the studies included in our analysis varied in drug infusion protocol in terms of peripheral *vs* central access which may be of importance when using an agent with short half-life, and investigating a time sensitive outcome, such as time to achieve FFR. Fourth, since these studies included patients undergoing elective angiography, these results may not be extrapolated to populations with unstable angina or other acute coronary syndromes. Lastly, in an attempt to conduct the analysis in consistency with PRISMA guidelines, this study may be subject to publication bias[30]. Inherently however, our investigation had limited risk of residual bias since all included studies had a prospective design with patients receiving both hyperemic agents. We performed several sensitivity analyses to document the consistency of our results despite the aforementioned limitations. We employed jackknife approach and excluded individual studies to investigate outcomes and re-calculate I^2 . Given the lack of large multicenter studies addressing these differences in a well-designed prospective fashion, our analysis provides valuable insights into the differential outcomes of FFR measurement in patients with adenosine *vs* regadenoson use.

CONCLUSION

Our meta-analysis demonstrates that use of regadenoson for FFR measurement among patients undergoing elective angiography is associated with shorter time to achieve FFR, and lower risk of side effects while providing excellent correlation with the results obtained with adenosine and therefore may

be an acceptable alternative for FFR measurement in the cardiac catheterization laboratory. The ease of its use, and a relatively favorable side effect profile make regadenoson a very appealing alternative to adenosine.

ARTICLE HIGHLIGHTS

Research background

Regadenoson is a selective adenosine receptor agonist that causes coronary hyperemia and in limited studies has been shown to have comparative efficacy to adenosine in evaluating coronary fractional flow reserve (FFR).

Research motivation

Considering the evidence is limited in supporting the use of regadenoson as an alternative to adenosine in evaluating FFR, we hypothesized that using meta-analysis we can improve the strength of evidence comparing regadenoson *vs* adenosine in evaluating FFR in intermediate severity coronary stenosis.

Research objectives

To perform meta-analysis to evaluate regadenoson *vs* adenosine for efficacy and safety.

Research methods

Pooled meta-analysis of published studies. Comparing correlation coefficient and adverse events using random effects model. Visual inspection for bias and heterogeneity assessment using I^2 test.

Research results

The FFR correlation coefficient between regadenoson and adenosine was 0.98 [95% confidence interval (CI): 0.96-0.99, $P < 0.01$]. Time to achieve FFR was shorter by 34.31 s (95% CI: 25.14-43.48) in the regadenoson group. The risk of adverse events was higher with adenosine with odds ratio of 2.39 (95% CI: 1.22-4.67, $P = 0.01$).

Research conclusions

Regadenoson had comparable efficacy in obtaining FFR compared to adenosine and this was achieved in a shorter duration of time and with lower incidence of adverse effects.

Research perspectives

Regadenoson presents an alternative to adenosine in evaluating FFR in patients with intermediate severity coronary artery stenosis with lower risk of side effects and also saves time.

FOOTNOTES

Author contributions: Gill GS and Gadre A independently conducted literature search for studies to be included in the final analysis; all authors discussed disagreement in included studies; Gill GS prepared the first manuscript draft, tables and figures, conducted statistical analysis, and contributed to major revision; Gadre A contributed to revisions; Kanmanthareddy A conceptualized the study, performed independent statistical analysis, supervised methodology, made substantial changes to the manuscript, and contributed to major revision.

Conflict-of-interest statement: The authors do not have any conflict of interest.

PRISMA 2009 Checklist statement: The authors have read the PRISMA 2009 Checklist, and the manuscript was prepared and revised according to the PRISMA 2009 Checklist.

Open-Access: This article is an open-access article that was selected by an in-house editor and fully peer-reviewed by external reviewers. It is distributed in accordance with the Creative Commons Attribution NonCommercial (CC BY-NC 4.0) license, which permits others to distribute, remix, adapt, build upon this work non-commercially, and license their derivative works on different terms, provided the original work is properly cited and the use is non-commercial. See: <https://creativecommons.org/licenses/by-nc/4.0/>

Country/Territory of origin: United States

ORCID number: Gauravpal Singh Gill 0000-0002-4806-6418; Akshaya Gadre 0000-0002-1036-732X; Arun Kanmanthareddy 0000-0003-0256-1146.

S-Editor: Wang JJ

L-Editor: A

P-Editor: Wang JJ

REFERENCES

- Collet C, Grundeken MJ, Asano T, Onuma Y, Wijns W, Serruys PW. State of the art: coronary angiography. *EuroIntervention* 2017; **13**: 634-643 [PMID: [28844026](#) DOI: [10.4244/EIJ-D-17-00465](#)]
- Zir LM, Miller SW, Dinsmore RE, Gilbert JP, Harthorne JW. Interobserver variability in coronary angiography. *Circulation* 1976; **53**: 627-632 [PMID: [1253383](#) DOI: [10.1161/01.cir.53.4.627](#)]
- Galbraith JE, Murphy ML, de Soyza N. Coronary angiogram interpretation. Interobserver variability. *JAMA* 1978; **240**: 2053-2056 [PMID: [702698](#)]
- Pinto DS, Stone GW, Ellis SG, Cox DA, Hermiller J, O'Shaughnessy C, Mann JT, Mehran R, Na Y, Turco M, Caputo R, Popma JJ, Cutlip DE, Russell ME, Cohen DJ; TAXUS-IV Investigators. Impact of routine angiographic follow-up on the clinical benefits of paclitaxel-eluting stents: results from the TAXUS-IV trial. *J Am Coll Cardiol* 2006; **48**: 32-36 [PMID: [16814645](#) DOI: [10.1016/j.jacc.2006.02.060](#)]
- Tonino PA, De Bruyne B, Pijls NH, Siebert U, Ikeno F, van't Veer M, Klauss V, Manoharan G, Engström T, Oldroyd KG, Ver Lee PN, McCarthy PA, Fearon WF; FAME Study Investigators. Fractional flow reserve versus angiography for guiding percutaneous coronary intervention. *N Engl J Med* 2009; **360**: 213-224 [PMID: [19144937](#) DOI: [10.1056/NEJMoa0807611](#)]
- De Bruyne B, Pijls NH, Kalesan B, Barbato E, Tonino PA, Piroth Z, Jagic N, Möbius-Winkler S, Rioufol G, Witt N, Kala P, McCarthy P, Engström T, Oldroyd KG, Mavromatis K, Manoharan G, Verlee P, Frobert O, Curzen N, Johnson JB, Jüni P, Fearon WF; FAME 2 Trial Investigators. Fractional flow reserve-guided PCI versus medical therapy in stable coronary disease. *N Engl J Med* 2012; **367**: 991-1001 [PMID: [22924638](#) DOI: [10.1056/NEJMoa1205361](#)]
- Liberati A, Altman DG, Tetzlaff J, Mulrow C, Gotzsche PC, Ioannidis JP, Clarke M, Devereaux PJ, Kleijnen J, Moher D. The PRISMA statement for reporting systematic reviews and meta-analyses of studies that evaluate healthcare interventions: explanation and elaboration. *BMJ* 2009; **339**: b2700 [PMID: [19622552](#) DOI: [10.1136/bmj.b2700](#)]
- DerSimonian R, Laird N. Meta-analysis in clinical trials. *Control Clin Trials* 1986; **7**: 177-188 [PMID: [3802833](#) DOI: [10.1016/0197-2456\(86\)90046-2](#)]
- Higgins JP, Thompson SG, Deeks JJ, Altman DG. Measuring inconsistency in meta-analyses. *BMJ* 2003; **327**: 557-560 [PMID: [12958120](#) DOI: [10.1136/bmj.327.7414.557](#)]
- Nair PK, Marroquin OC, Mulukutla SR, Khandhar S, Gulati V, Schindler JT, Lee JS. Clinical utility of regadenoson for assessing fractional flow reserve. *JACC Cardiovasc Interv* 2011; **4**: 1085-1092 [PMID: [22017933](#) DOI: [10.1016/j.jcin.2011.07.011](#)]
- Arumugham P, Figueredo VM, Patel PB, Morris DL. Comparison of intravenous adenosine and intravenous regadenoson for the measurement of pressure-derived coronary fractional flow reserve. *EuroIntervention* 2013; **8**: 1166-1171 [PMID: [23164748](#) DOI: [10.4244/EIJV8I10A180](#)]
- Prasad A, Zareh M, Doherty R, Gopal A, Vora H, Somma K, Mehra A, Clavijo LC, Matthews RV, Shavelle DM. Use of regadenoson for measurement of fractional flow reserve. *Catheter Cardiovasc Interv* 2014; **83**: 369-374 [PMID: [23765847](#) DOI: [10.1002/ccd.25055](#)]
- van Nunen LX, Lenders GD, Schampaert S, van't Veer M, Wijnbergen I, Brueren GR, Tonino PA, Pijls NH. Single bolus intravenous regadenoson injection versus central venous infusion of adenosine for maximum coronary hyperaemia in fractional flow reserve measurement. *EuroIntervention* 2015; **11**: 905-913 [PMID: [25136887](#) DOI: [10.4244/EIJY14M08_10](#)]
- Edward JA, Lee JH, White CJ, Morin DP, Bober R. Intravenous regadenoson with aminophylline reversal is safe and equivalent to intravenous adenosine infusion for fractional flow reserve measurements. *Clin Cardiol* 2018; **41**: 1348-1352 [PMID: [30125368](#) DOI: [10.1002/clc.23052](#)]
- Burzotta F, Leone AM, Aurigemma C, Zambrano A, Zimbardo G, Ariotti M, Vergallo R, De Maria GL, Cerracchio E, Romagnoli E, Trani C, Crea F. Fractional Flow Reserve or Optical Coherence Tomography to Guide Management of Angiographically Intermediate Coronary Stenosis: A Single-Center Trial. *JACC Cardiovasc Interv* 2020; **13**: 49-58 [PMID: [31918942](#) DOI: [10.1016/j.jcin.2019.09.034](#)]
- Waksman R, Legutko J, Singh J, Orlando Q, Marso S, Schloss T, Tugaoen J, DeVries J, Palmer N, Haude M, Swymelar S, Torguson R. FIRST: Fractional Flow Reserve and Intravascular Ultrasound Relationship Study. *J Am Coll Cardiol* 2013; **61**: 917-923 [PMID: [23352786](#) DOI: [10.1016/j.jacc.2012.12.012](#)]
- Kennedy MW, Fabris E, Ijsselmuiden AJ, Nef H, Reith S, Escaned J, Alfonso F, van Royen N, Wojakowski W, Witkowski A, Indolfi C, Ottervanger JP, Suryapranata H, Kedhi E. Combined optical coherence tomography morphologic and fractional flow reserve hemodynamic assessment of non-culprit lesions to better predict adverse event outcomes in diabetes mellitus patients: COMBINE (OCT-FFR) prospective study. Rationale and design. *Cardiovasc Diabetol* 2016; **15**: 144 [PMID: [27724869](#) DOI: [10.1186/s12933-016-0464-8](#)]
- Lim WH, Koo BK, Nam CW, Doh JH, Park JJ, Yang HM, Park KW, Kim HS, Takashima H, Waseda K, Amano T, Kato D, Kurita A, Oi M, Toyofuku M, van Nunen L, Pijls NH. Variability of fractional flow reserve according to the methods of hyperemia induction. *Catheter Cardiovasc Interv* 2015; **85**: 970-976 [PMID: [25413590](#) DOI: [10.1002/ccd.25752](#)]
- Stolker JM, Lim MJ, Shavelle DM, Morris DL, Angiolillo DJ, Guzman LA, Kennedy KF, Weber E, Zareh M, Neumayr RH, Zenni MM. Pooled comparison of regadenoson versus adenosine for measuring fractional flow reserve and coronary flow in the catheterization laboratory. *Cardiovasc Revasc Med* 2015; **16**: 266-271 [PMID: [26242981](#) DOI: [10.1016/j.carrev.2015.05.011](#)]
- Rudzinski W, Waller AH, Rusovici A, Dehnee A, Nasur A, Benz M, Sanchez S, Klapholz M, Kaluski E. Comparison of

- efficacy and safety of intracoronary sodium nitroprusside and intravenous adenosine for assessing fractional flow reserve. *Catheter Cardiovasc Interv* 2013; **81**: 540-544 [PMID: [22961876](#) DOI: [10.1002/ccd.24652](#)]
- 21 **Leone AM**, Porto I, De Caterina AR, Basile E, Aurelio A, Gardi A, Russo D, Laezza D, Niccoli G, Burzotta F, Trani C, Mazzari MA, Mongiardo R, Rebuzzi AG, Crea F. Maximal hyperemia in the assessment of fractional flow reserve: intracoronary adenosine versus intracoronary sodium nitroprusside versus intravenous adenosine: the NASCI (Nitroprussiato versus Adenosina nelle Stenosi Coronariche Intermedie) study. *JACC Cardiovasc Interv* 2012; **5**: 402-408 [PMID: [22516396](#) DOI: [10.1016/j.jcin.2011.12.014](#)]
- 22 **Li S**, Deng J, Wang X, Zhao X, Han Y. Efficiencies of intracoronary sodium nitroprusside on fractional flow reserve measurement. *Int J Clin Exp Med* 2015; **8**: 2679-2683 [PMID: [25932219](#)]
- 23 **Trochu JN**, Zhao G, Post H, Xu X, Belardinelli L, Belloni FL, Hintze TH. Selective A2A adenosine receptor agonist as a coronary vasodilator in conscious dogs: potential for use in myocardial perfusion imaging. *J Cardiovasc Pharmacol* 2003; **41**: 132-139 [PMID: [12500031](#) DOI: [10.1097/00005344-200301000-00017](#)]
- 24 **Lieu HD**, Shryock JC, von Mering GO, Gordi T, Blackburn B, Olmsted AW, Belardinelli L, Kerensky RA. Regadenoson, a selective A2A adenosine receptor agonist, causes dose-dependent increases in coronary blood flow velocity in humans. *J Nucl Cardiol* 2007; **14**: 514-520 [PMID: [17679059](#) DOI: [10.1016/j.nuclcard.2007.02.016](#)]
- 25 **Borea PA**, Gessi S, Merighi S, Vincenzi F, Varani K. Pharmacology of Adenosine Receptors: The State of the Art. *Physiol Rev* 2018; **98**: 1591-1625 [PMID: [29848236](#) DOI: [10.1152/physrev.00049.2017](#)]
- 26 **Olah ME**, Stiles GL. Adenosine receptor subtypes: characterization and therapeutic regulation. *Annu Rev Pharmacol Toxicol* 1995; **35**: 581-606 [PMID: [7598508](#) DOI: [10.1146/annurev.pa.35.040195.003053](#)]
- 27 **Ghimire G**, Hage FG, Heo J, Iskandrian AE. Regadenoson: a focused update. *J Nucl Cardiol* 2013; **20**: 284-288 [PMID: [23229649](#) DOI: [10.1007/s12350-012-9661-3](#)]
- 28 **Doran JA**, Sajjad W, Schneider MD, Gupta R, Mackin ML, Schwartz RG. Aminophylline and caffeine for reversal of adverse symptoms associated with regadenoson SPECT MPI. *J Nucl Cardiol* 2017; **24**: 1062-1070 [PMID: [27025843](#) DOI: [10.1007/s12350-016-0452-0](#)]
- 29 **Pijls NH**, van Nunen LX. Fractional flow reserve, maximum hyperemia, adenosine, and regadenoson. *Cardiovasc Revasc Med* 2015; **16**: 263-265 [PMID: [26242980](#) DOI: [10.1016/j.carrev.2015.06.003](#)]
- 30 **Moher D**, Liberati A, Tetzlaff J, Altman DG; PRISMA Group. Preferred reporting items for systematic reviews and meta-analyses: the PRISMA statement. *PLoS Med* 2009; **6**: e1000097 [PMID: [19621072](#) DOI: [10.1371/journal.pmed.1000097](#)]



Published by **Baishideng Publishing Group Inc**
7041 Koll Center Parkway, Suite 160, Pleasanton, CA 94566, USA

Telephone: +1-925-3991568

E-mail: bpgoffice@wjgnet.com

Help Desk: <https://www.f6publishing.com/helpdesk>

<https://www.wjgnet.com>

