



Mining TCGA database for gene expression in ovarian serous cystadenocarcinoma microenvironment

Youzheng Xu¹, Yixin Xu², Chun Wang¹, Baoguo Xia¹, Qingling Mu¹, Shaohong Luan¹ and Jun Fan¹

¹Department of Gynecology, Qingdao Municipal Hospital, Qingdao, China

²Department of Neurology, Qingdao Municipal Hospital, Qingdao, China

ABSTRACT

Background. Ovarian cancer is one of the leading causes of female deaths worldwide. Ovarian serous cystadenocarcinoma occupies about 90% of it. Effective and accurate biomarkers for diagnosis, outcome prediction and personalized treatment are needed urgently

Methods. Gene expression profile for OSC patients was obtained from the TCGA database. The ESTIMATE algorithm was used to calculate immune scores and stromal scores of expression data of ovarian serous cystadenocarcinoma samples. Survival results between high and low groups of immune and stromal score were compared and differentially expressed genes (DEGs) were screened out by limma package. The Gene Ontology (GO), the Kyoto Encyclopedia of Genes and Genomes (KEGG) pathway enrichment analysis and the protein-protein interaction (PPI) network analysis were performed with the g:Profiler database, the Cytoscape and Search Tool for the Retrieval of Interacting Genes (STRING-DB). Survival results between high and low immune and stromal score groups were compared. Kaplan-Meier plots based on TCGA follow up information were generated to evaluate patients' overall survival.

Results. Eighty-six upregulated DEGs and one downregulated DEG were identified. Three modules, which included 49 nodes were chosen as important networks. Seven DEGs (*VSIG4*, *TGFBI*, *DCN*, *F13A1*, *ALOX5AP*, *GPX3*, *SFRP4*) were considered to be correlated with poor overall survival.

Conclusion. Seven DEGs (*VSIG4*, *TGFBI*, *DCN*, *F13A1*, *ALOX5AP*, *GPX3*, *SFRP4*) were correlated with poor overall survival in our study. This new set of genes can become strong predictor of survival, individually or combined. Further investigation of these genes is needed to validate the conclusion to provide novel understanding of tumor microenvironment with ovarian serous cystadenocarcinoma prognosis and treatment.

Subjects Bioinformatics, Gynecology and Obstetrics, Oncology

Keywords Ovarian serous cystadenocarcinoma, Differentially expressed genes, Overall survival, Tumor microenvironment, Immune and stromal scores

INTRODUCTION

Ovarian cancer is one of the leading causes of female deaths worldwide. It is often diagnosed at late stage due to nonspecific symptoms (*Allemani et al., 2015*). Epithelial ovarian cancer (EOC) mainly includes serous, mucinous, endometrioid, clear cell, undifferentiated and

Submitted 27 March 2019

Accepted 8 April 2021

Published 4 May 2021

Corresponding authors

Shaohong Luan,

luanshaohong2020@163.com

Jun Fan, fanjunsly@163.com

Academic editor

Yuriy Orlov

Additional Information and
Declarations can be found on
page 10

DOI 10.7717/peerj.11375

© Copyright
2021 Xu et al.

Distributed under
Creative Commons CC-BY 4.0

OPEN ACCESS

other histological type of carcinoma. Ovarian serous cystadenocarcinoma (OSC) is the most deadly female cancer of reproductive system. It is estimated that 150,000 women die of this disease annually and 230,000 are diagnosed with ovarian cancer every year (Siegel, Miller & Jemal, 2016). Ovarian serous cystadenocarcinoma occupies about 90% of all ovarian cancers (Cancer Genome Atlas Research Network, 2011). 5-year survival of stage I patients is higher than 90%. In stages III to IV, less than 20%. Standard therapy includes cytoreductive surgery with first-line combination chemotherapy. Studies showed that 25% of ovarian cancer patients have primary resistance to chemotherapy regimens, 80% of patients may develop secondary resistance during chemotherapy (Zhang et al., 2019). With the development of technology, diagnostic biomarkers and targeted therapy has been applied in many kinds of cancers including EOC. Effective and accurate biomarkers for diagnosis, outcome prediction and personalized treatment are needed urgently.

The Cancer Genome Atlas (TCGA) have been established to discover genomic abnormalities in cancer of large cohorts worldwide to investigate the mechanism of tumorigenesis and development. Ovarian serous cystadenocarcinoma was divided into four subtypes: differentiated, immunoreactive, mesenchymal and proliferative in the TCGA database, according to their gene expression profiles. EOC patients show the highest prevalence of *BRCA* mutations among all pathological types of ovarian cancer which correlates with EOC progression and prognosis (Pan & Xie, 2017).

Tumor microenvironment play an important role in tumor genesis and progression, which contains immune cells, mesenchymal cells, endothelial cells, inflammatory mediators and extracellular matrix molecules (Hanahan & Weinberg, 2000). Stromal cells provide tumor cell growth signals, intermediate metabolites, and provide a suitable environment for tumor progression as well as metastasis (Yuan et al., 2016). An algorithm called ESTIMATE (Estimation of stromal and immune cells in malignant tumor tissues using expression data) calculates immune and stromal scores to predict the infiltration of non-tumor cells, by analyzing specific gene expression signature of immune and stromal cells, has been developed to analyze tumor purity and immune characteristics in TCGA database in several kinds of cancers (Alonso et al., 2017; Priedigkeit et al., 2017; Yoshihara et al., 2013).

In this study, we use ESTIMATE algorithm to identify key genes in OSC patients by analyzing TCGA expression profiles and clinical data. Further bioinformatic analysis were performed to determine the association of these genes with prognosis in ovarian cancer.

MATERIAL AND METHODS

Database

Gene expression profile for OSC patients was obtained from the TCGA data portal (<https://tcga-data.nci.nih.gov/tcga/>) (Level 3, 2017-09-08), using Affymetrix HT_HG-U133A platform, by Broad Institute of MIT and Harvard University cancer genomic characterization center (Tomczak, Czerwinska & Wiznerowicz, 2015). Clinical data of survival outcome (2016-04-27) and gene expression subtype (2016-05-27) were also downloaded from TCGA data portal. The ESTIMATE algorithm was used to calculate immune scores and stromal scores of expression data of ovarian serous cystadenocarcinoma

samples (Yoshihara *et al.*, 2013). Ordinary one-way ANOVA test was used to compare immune and stromal scores of different gene expression subtypes. Student *t* test was used to compare immune and stromal scores of BRCA mutation subtypes. Log rank test was used to compare survival results between high and low immune and stromal score groups.

Data processing of DEGs

Limma package (<http://bioconductor.riken.jp/packages/3.10/bioc/html/limma.html>) was used to detect the DEGs between high and low groups of immune and stromal score. The cutoff criteria was set as adjusted $p < 0.05$ and $|\log_2FC| > 1.0$. Each group owns unique DEGs. Venn diagram tool online (<http://bioinfogp.cnb.csic.es/tools/venny>) was used to analyze overlapping components.

GO and KEGG pathway analysis of DEGs

We used standard GO analysis tools to divide gene functions into biological process (BP), molecular function (MF), and cellular component (CC) (*The Gene Ontology*, 2019). KEGG analyze genomes, biological pathways, diseases, chemical substances and drugs (Kanehisa *et al.*, 2019). The g:Profiler database (<https://biit.cs.ut.ee/gprofiler/>) was used to identify the pathways and functional annotation of found genes and visualization of results. $p < 0.05$ was considered statistically significant (Reimand *et al.*, 2019).

PPI network and module analysis

Search Tool for the Retrieval of Interacting Genes (STRING-DB) database (<http://string-db.org/>) was used to evaluate the relationships among DEGs (Szklarczyk *et al.*, 2019; Von Mering *et al.*, 2005). The combined score is used as a cut-off value to limit the number of interactions of higher confidence. It is computed by correcting randomly observing probability before combining them from different evidence channels (Von Mering *et al.*, 2005). The combined score was set as >0.4 . PPI networks were constructed using the Cytoscape software (Doncheva *et al.*, 2019). Nodes with higher degree of connectivity tend to be more essential and molecular complex detection module (MCODE) was then used to find clusters based on topology, which will help to locate key network and pathways in PPI network (Doncheva *et al.*, 2019).

Overall survival curve

By analyzing clinical data from TCGA ovarian serous cystadenocarcinoma database, Kaplan–Meier plots were generated to evaluate patients' overall survival of expression levels of DEGs. $p < 0.05$ was considered statistically significant.

RESULTS

Immune scores and stromal scores are significantly associated with OSC subtypes

Gene expression profiles and clinical information of 469 OSC samples were downloaded from the TCGA database, with initial pathologic diagnosis made between 1992 and 2013. 304 gene expression subtype data were also retrieved, which contains 69 (22.7%) cases of differentiated subtype, 84 (27.6%) cases of immunoreactive subtype, 69 (22.7%) cases of

mesenchymal subtype, 82 (27.0%) cases of proliferative subtype. 6 samples of 469 were validated to contain BRCA1 or BRCA2 mutation.

ESTIMATE algorithm was used to calculate immune and stromal scores of downloaded samples. Immune scores were distributed between -1498.58 to 2774.16 , stromal scores -1988.05 to 1837.43 , respectively. The average immune score of immunoreactive subtype cases ranked the highest of all 4 subtypes. The mesenchymal subtype has the highest stromal scores. The proliferative subtype cases had the lowest immune and stromal scores (Figs. 1A, 1B, $p < 0.0001$). Immune scores and stromal scores are correlated with the subtype classification of gene expression. The distribution of immune scores and stromal scores based on the status of BRCA1/2 mutation showed mutant samples have higher immune scores and stromal scores, although statistically not significant (Figs. 1C, 1D).

469 OSC samples were divided into high and low score groups (234:235) based on immune scores and stromal scores to compare their overall survival. Kaplan–Meier survival curves showed that median overall survival of cases of the high score group of immune scores is longer than the cases in the low score group (1399 d vs. 1336 d, $p = 0.4505$ in log-rank test). Cases with lower stromal scores also showed longer median overall survival (1373 d vs. 1321 d, $p = 0.4649$ in log-rank test), although both were not statistically significant (Figs. 1E, 1F).

DEGs between groups of immune and stromal scores in OSC

Microarray data of all 469 cases obtained in TCGA database were analyzed using limma package. Heatmaps and volcano plots in Fig. 2 showed distinct gene expression profiles between cases of high and low immune scores (Figs. 2A, 2C) and stromal scores (Figs. 2B, 2D) groups. 162 genes were upregulated and 5 genes downregulated in the high than the low immune score group, while 163 upregulated and 2 downregulated in the high than the low stromal score group ($p < 0.05$ and $|\log_2FC| > 1.0$). Subsequently, Venn analysis was performed to get the intersection of the DEG profiles. Finally, 87 DEGs were significantly differentially expressed, of which 86 significantly upregulated (Fig. 2E) and 1 downregulated (Fig. 2F) in both immune and stromal comparison.

GO function and KEGG pathway enrichment analysis of DEGs

The enriched GO terms were divided into MF, CC and BP ontologies. Top GO terms identified include glycosaminoglycan binding, immune response and extracellular space (Figs. 3A, 3B, 3C). DEGs were mainly enriched in staphylococcus aureus infection and complement and coagulation cascades according to the results of KEGG pathway analysis (Fig. 3D).

PPI network analysis

STRING-DB (score > 0.4) results of PPI network were visualized by software Cytoscape, as presented in Fig. 4A. MCODE module was used to identify key genes of important pathways. The network was made up of 3 modules including 49 nodes (Figs. 4B, 3C, 4D). *TYROBP*, *ITGB2*, *CIQB*, *CIQA* and *CD53* in module B have the top connectivity among all DEGs and are considered to have important relationship to immune response in ovarian cancer. In module C, *CD163* had the most connections with other members of the

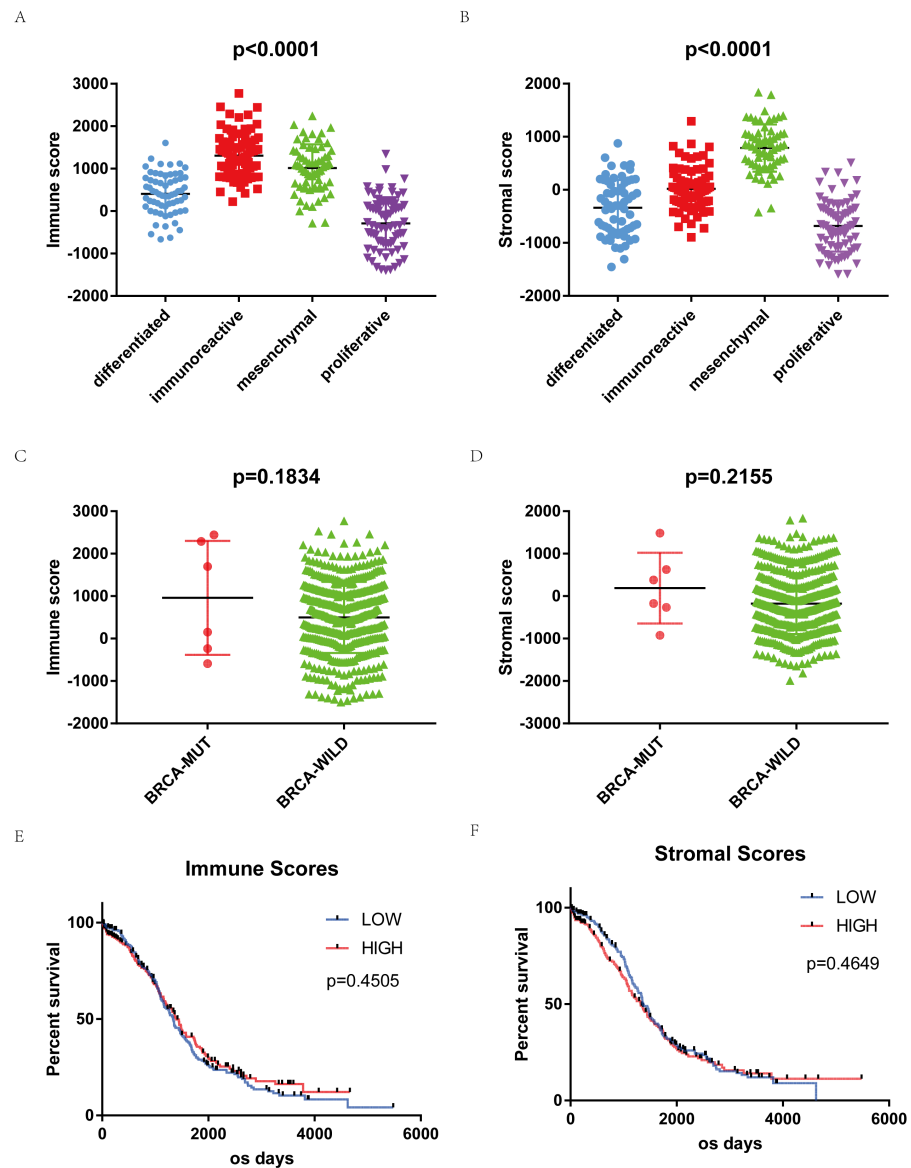


Figure 1 Immune scores and stromal scores are associated with OSC subtypes and their overall survival. (A) Distribution of immune scores of OSC subtypes. Box-plot shows that there is significant association between OSC subtypes and the level of immune scores ($n = 304$, $p < 0.001$). (B) Distribution of stromal scores of OSC subtypes. Box-plot shows that there is significant association between OSC subtypes and the level of stromal scores ($n = 304$, $p < 0.001$). (C) Distribution of immune scores for BRCA mutant and BRCA wildtype OSC cases. Box-plot shows that there is no significant association between BRCA mutation status and immune scores ($n = 469$, $p = 0.1834$). (D) Distribution of stromal scores for BRCA mutant and BRCA wildtype cases. Box-plot shows that there is no significant association between OSC subtypes and the level of stromal scores ($n = 469$, $p = 0.2155$). (E) Kaplan–Meier survival curves showed that median overall survival of cases with the high score group of immune scores is longer than the cases in the low score group (1399 d vs. 1336 d, $p = 0.4505$ in log-rank test). (F) Cases with lower stromal scores also showed longer median overall survival (1373 d vs. 1321 d, $p = 0.4649$ in log-rank test).

Full-size [DOI: 10.7717/peerj.11375/fig-1](https://doi.org/10.7717/peerj.11375/fig-1)

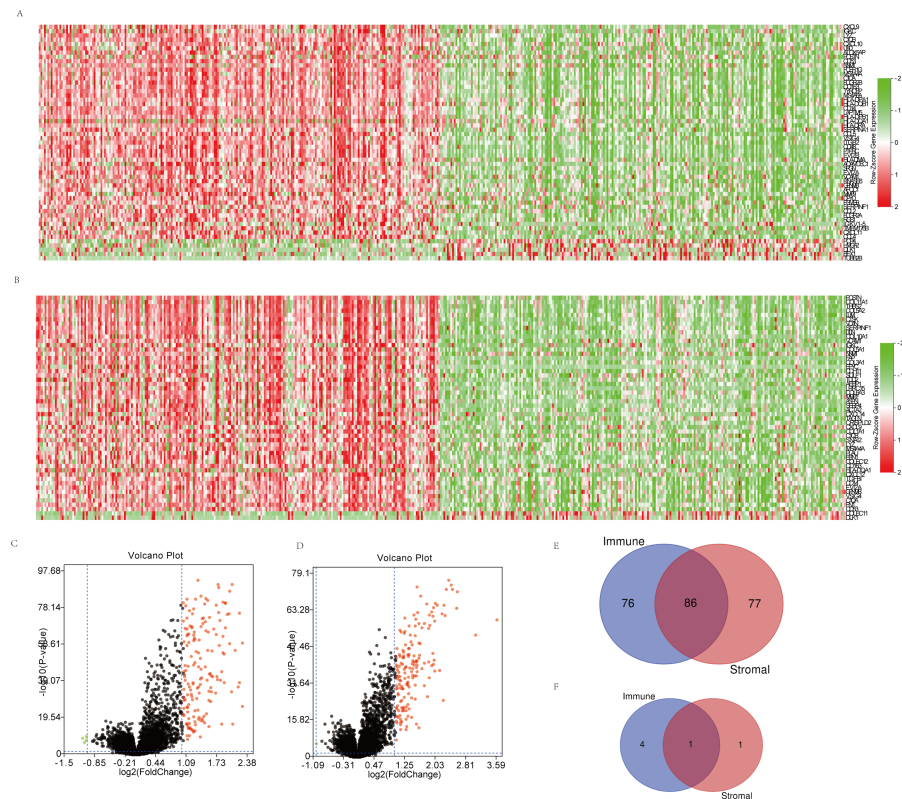


Figure 2 Comparison of gene expression profile with immune scores and stromal scores in OSC. (A, B) Distinct gene expression profiles between cases of high and low immune (A) or stromal (B) scores. (C, D) Volcano plots of distinct gene expression profiles between cases of high and low immune (C) or stromal (D) scores. (E, F) Venn diagrams showing the number of commonly upregulated (E) or downregulated (F) DEGs in immune and stromal score groups.

Full-size [DOI: 10.7717/peerj.11375/fig-2](https://doi.org/10.7717/peerj.11375/fig-2)

module, which is reported to related to tumor associated macrophages and poor prognosis in ovarian cancer (Reinartz et al., 2014).

Correlation of DEGs expression and overall survival

To evaluate the relationship of DEGs and overall survival of OSC patients from TCGA database, Kaplan–Meier survival analysis were performed based on the follow up information. Among the 86 DEGs upregulated in both the high-immune scores and high-stromal scores groups, 7 genes (*VSIG4*, *TGFBI*, *DCN*, *F13A1*, *ALOX5AP*, *GPX3*, *SFRP4*) considered to be correlated with poor overall survival in log-rank test ($p < 0.05$) (Fig. 5). The statistical results of Kaplan–Meier survival analysis were not convincing enough for the conclusion. Thus, the prognostic value of these 7 genes needs further investigation.

DISCUSSION

In the current work, we identified tumor microenvironment related genes that contribute to OSC overall survival in the TCGA database. Subsequently, by comparing gene expression

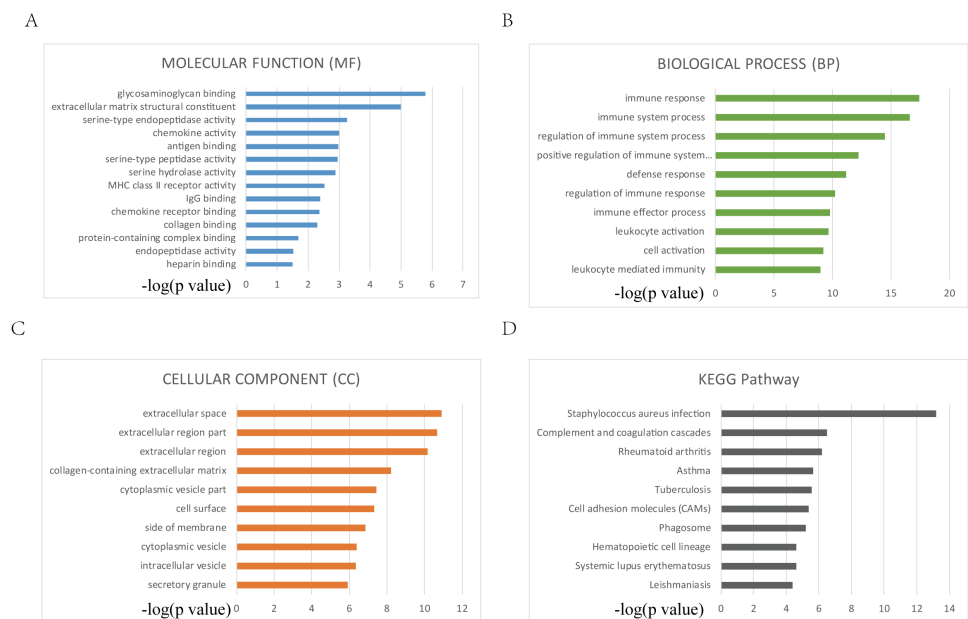


Figure 3 Top 10 GO and KEGG terms. (A, B, C, D) Top 10 GO and KEGG terms. False discovery rate (FDR) of GO analysis was acquired from g: Profiler annotation tool ($p < 0.05$).

Full-size [DOI: 10.7717/peerj.11375/fig-3](https://doi.org/10.7717/peerj.11375/fig-3)

between high and low immune and stromal scores, we extracted 86 upregulated genes involved in glycosaminoglycan binding, immune response and extracellular space, which is consistent with previous reports that the functions of immune cells and ECM molecules are related with tumor microenvironment (Yuan *et al.*, 2016). By PPI network and MCODE module, TYROBP, *ITGB2*, *C1QB*, *C1QA*, *CD53* and *CD163* have top connectivity among all DEGs and are considered to have important relationship to immune response in ovarian cancer. High expression of 7 DEGs (*VSIG4*, *TGFBI*, *DCN*, *F13A1*, *ALOX5AP*, *GPX3*, *SFRP4*) were significantly correlated with poor overall survival in Kaplan–Meier survival analysis. However, the curve of *DCN*, *GPX3* and *SFRP4* contains some overlapping part between high and low expression groups (p value = 0.025, 0.049, 0.049 respectively). Also, the statistical results of Kaplan–Meier survival analysis were not convincing enough for the conclusion. Thus, the prognostic value of these 7 genes needs further investigation, which should be discussed and validated in experimental and clinical research in the future.

VSIG4 (protein V-set and Ig domain-containing 4) is a novel B7 family-related macrophage protein. It can inhibit T-cell activation and promote cancer development. In advanced-stage and recurrent ovarian cancer patients, soluble *VSIG4* levels were significantly increased ($p = 0.0244$ and 0.0288, respectively). High *VSIG4* expression in cancer tissue were associated with a longer disease-free interval ($p = 0.0246$) (Byun *et al.*, 2017). Transforming growth factor-beta-inducible gene-h3 (*TGFBI*) is a secreted protein and possess tumor suppressor function. It activates integrin-mediated FAK and RhoA to sensitize ovarian cancer cells to paclitaxel in the extracellular matrix (Ahmed *et al.*, 2007). *TGFBI* has been proved to be related with paclitaxel-resistance in ovarian cancer, which might be a potential therapeutic target for the enhancement of responses to

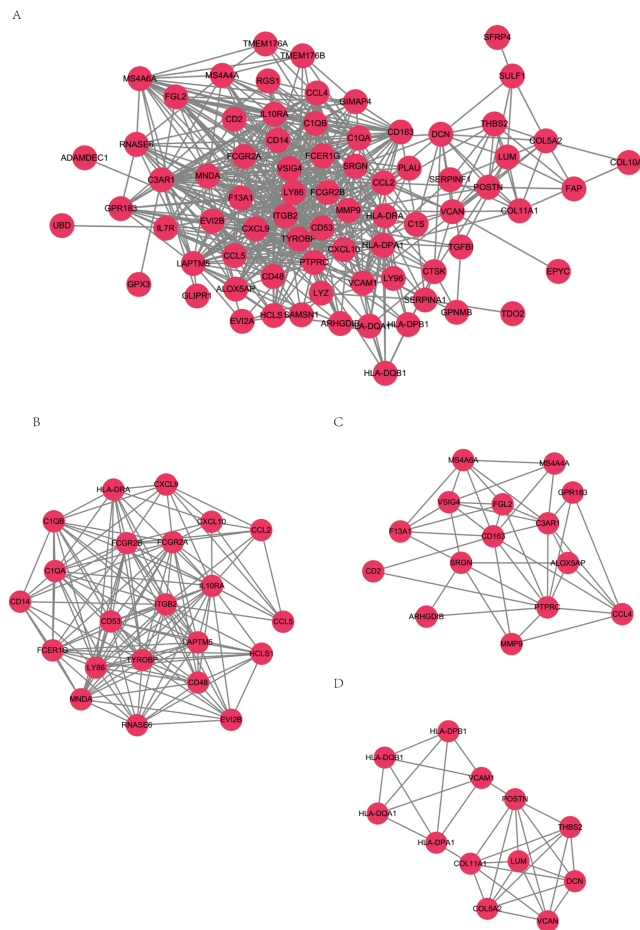


Figure 4 PPI networks. PPI networks (A) and 3 PPI networks of MCODE modules (B, C, D).

Full-size [DOI: 10.7717/peerj.11375/fig-4](https://doi.org/10.7717/peerj.11375/fig-4)

chemotherapy in ovarian cancer patients (Wang et al., 2012). Another study suggested that *TGFBI* possesses both tumor suppressor and promoter function depending on the tumor microenvironment (Ween, Oehler & Ricciardelli, 2012). *DCN* (Decorin) is a member of the small leucine-rich proteoglycan family. It is important in collagen fibril assembly and tumor suppression. Studies in different cancer cell lines showed *DCN* effectively inhibits TGF- β induced cancer cell spreading and proliferation (Jarvinen & Prince, 2015). *DCN* was proved not only contributed to colonic carcinogenesis, but also is a novel potential biomarkers for the diagnosis of colon cancer (Li et al., 2017), however its function in ovarian cancer has not been investigated. *F13A1* was proved significantly higher concentration in ovarian cancer plasma compared to normal female woman. Plasma proteins from ovarian cancer patients may be a powerful tool for clinical diagnosis and prognosis prediction which needs further investigation (Dufresne et al., 2018). *ALOX5AP* expression is increased in patients of obesity and insulin resistance (Elias et al., 2016) and recognized as a susceptibility gene for stroke (Papapostolou et al., 2014), but its role in cancer genesis and progression has not been investigated. High *GPX3* expression was associated with poorer overall patient

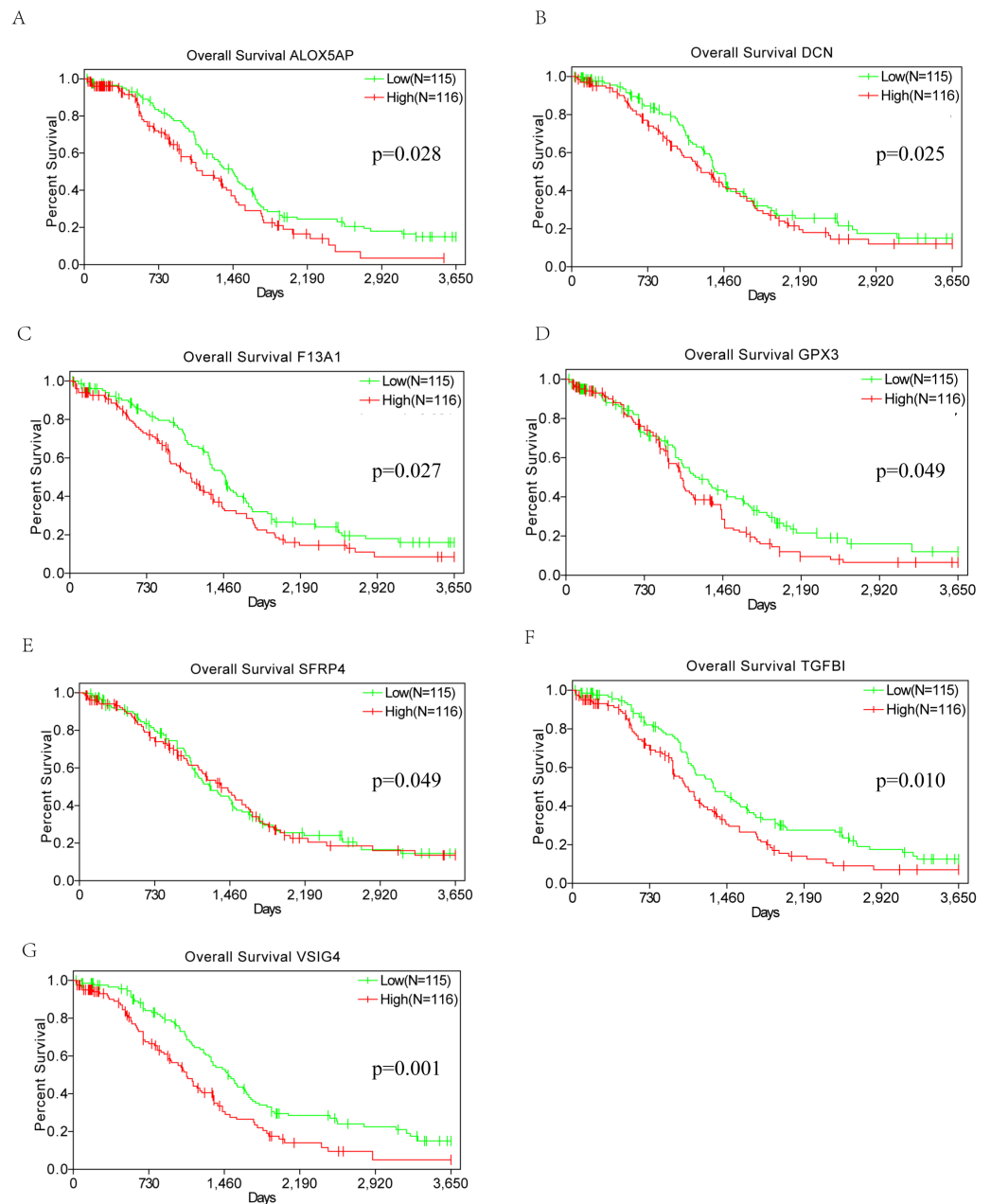


Figure 5 Kaplan–Meier survival curves. Kaplan–Meier survival curves of the correlation of expression of seven DEGs (A–G) with overall survival ($p < 0.05$, Log-rank test).

Full-size  DOI: [10.7717/peerj.11375/fig-5](https://doi.org/10.7717/peerj.11375/fig-5)

survival and increased tumor stage. Exogenous oxidant insult as extracellular H_2O_2 can be removed via GPX3-dependent pathway in the microenvironment (Worley et al., 2018). GPX3 shows an important protective and adaptation function in ovarian cancer cellular survival in the ascites tumor environment, especially in high grade serous adenocarcinoma (Worley et al., 2018). SFRP4 inhibits Wnt signaling pathway and decreases transcription of Wnt target genes, Axin2, CyclinD1 and Myc, reducing migration ability of ovarian cancer

cells by increasing the ability to adhere to collagen and fibronectin (Ford et al., 2013). Also *SFRP4* confers chemo-sensitization and improve chemotherapeutic efficacy (Deshmukh et al., 2017), which possesses both diagnostic and therapeutic potential in epithelial ovarian cancer.

CONCLUSION

VSIG4, *TGFBI*, *DCN*, *F13A1*, *ALOX5AP*, *GPX3*, *SFRP4* were proved to be correlated with poor overall survival in our study. Further investigation of these genes is needed to validate the conclusion to provide novel understanding of tumor microenvironment with OSC prognosis and treatment.

ADDITIONAL INFORMATION AND DECLARATIONS

Funding

The authors received no funding for this work.

Competing Interests

The authors declare there are no competing interests.

Author Contributions

- Youzheng Xu conceived and designed the experiments, performed the experiments, analyzed the data, prepared figures and/or tables, authored or reviewed drafts of the paper, and approved the final draft.
- Yixin Xu analyzed the data, authored or reviewed drafts of the paper, proof reading, and approved the final draft.
- Chun Wang and Baoguo Xia performed the experiments, prepared figures and/or tables, authored or reviewed drafts of the paper, and approved the final draft.
- Qingling Mu, Shaohong Luan and Jun Fan analyzed the data, prepared figures and/or tables, authored or reviewed drafts of the paper, and approved the final draft.

Data Availability

The following information was supplied regarding data availability:

The raw measurements are available in the [Supplementary Files](#).

Supplemental Information

Supplemental information for this article can be found online at <http://dx.doi.org/10.7717/peerj.11375#supplemental-information>.

REFERENCES

- Ahmed AA, Mills AD, Ibrahim AE, Temple J, Blenkiron C, Vias M, Massie CE, Iyer NG, McGeoch A, Crawford R, Nicke B, Downward J, Swanton C, Bell SD, Earl HM, Laskey RA, Caldas C, Brenton JD. 2007. The extracellular matrix protein TGFBI induces microtubule stabilization and sensitizes ovarian cancers to paclitaxel. *Cancer Cell* 12:514–527 DOI 10.1016/j.ccr.2007.11.014.

- Allemani C, Weir HK, Carreira H, Harewood R, Spika D, Wang XS, Bannon F, Ahn JV, Johnson CJ, Bonaventure A, Marcos-Gragera R, Stiller C, Azevedo Silva G, Chen WQ, Ogunbiyi OJ, Rachet B, Soeberg MJ, You H, Matsuda T, Bielska-Lasota M, Storm H, Tucker TC, Coleman MP. 2015. Global surveillance of cancer survival 1995-2009: analysis of individual data for 25, 676, 887 patients from 279 population-based registries in 67 countries (CONCORD-2). *Lancet* 385:977–1010 DOI 10.1016/s0140-6736(14)62038-9.
- Alonso MH, Ausso S, Lopez-Doriga A, Cordero D, Guino E, Sole X, Barenys M, De Oca J, Capella G, Salazar R, Sanz-Pamplona R, Moreno V. 2017. Comprehensive analysis of copy number aberrations in microsatellite stable colon cancer in view of stromal component. *British Journal of Cancer* 117:421–431 DOI 10.1038/bjc.2017.208.
- Byun JM, Jeong DH, Choi IH, Lee DS, Kang MS, Jung KO, Jeon YK, Kim YN, Jung EJ, Lee KB, Sung MS, Kim KT. 2017. The significance of VSIG4 expression in ovarian cancer. *International Journal of Gynecological Cancer* 27:872–878 DOI 10.1097/IGC.0000000000000979.
- Cancer Genome Atlas Research Network. 2011. Integrated genomic analyses of ovarian carcinoma. *Nature* 474:609–615 DOI 10.1038/nature10166.
- Deshmukh A, Kumar S, Arfuso F, Newsholme P, Dharmarajan A. 2017. Secreted Frizzled-related protein 4 (sFRP4) chemo-sensitizes cancer stem cells derived from human breast, prostate, and ovary tumor cell lines. *Scientific Reports* 7:2256 DOI 10.1038/s41598-017-02256-4.
- Doncheva NT, Morris JH, Gorodkin J, Jensen LJ. 2019. Cytoscape STRING-DBApp: network analysis and visualization of proteomics data. *Journal of Proteome Research* 18:623–632 DOI 10.1021/acs.jproteome.8b00702.
- Dufresne J, Bowden P, Thavarajah T, Florentinus-Mefailoski A, Chen ZZ, Tucholska M, Norzin T, Ho MT, Phan M, Mohamed N, Ravandi A, Stanton E, Slutsky AS, Dos Santos CC, Romaschin A, Marshall JC, Addison C, Malone S, Heyland D, Scheltens P, Killestein J, Teunissen CE, Diamandis EP, Michael Siu KW, Marshall JG. 2018. The plasma peptides of ovarian cancer. *Clinical Proteomics* 15:41–46 DOI 10.1186/s12014-018-9215.
- Elias I, Ferre T, Vila L, Munoz S, Casellas A, Garcia M, Molas M, Agudo J, Roca C, Ruberte J, Bosch F, Franckhauser S. 2016. ALOX5AP overexpression in adipose tissue leads to LXA4 production and protection against diet-induced obesity and insulin resistance. *Diabetes* 65:2139–2150 DOI 10.2337/db16-0040.
- Ford CE, Jary E, Ma SS, Nixdorf S, Heinzelmann-Schwarz VA, Ward RL. 2013. The Wnt gatekeeper SFRP4 modulates EMT, cell migration and downstream Wnt signalling in serous ovarian cancer cells. *PLOS ONE* 8:e54362 DOI 10.1371/journal.pone.0054362.
- Hanahan D, Weinberg RA. 2000. The hallmarks of cancer. *Cell* 100:57–70 DOI 10.1016/S0092-8674(00)81683-9.
- Jarvinen TA, Prince S. 2015. Decorin: a growth factor antagonist for tumor growth inhibition. *BioMed Research International* 2015:654765 DOI 10.1155/2015/654765.

- Kanehisa M, Sato Y, Furumichi M, Morishima K, Tanabe M. 2019. New approach for understanding genome variations in KEGG. *Nucleic Acids Research* 47:D590–D595 DOI 10.1093/nar/gky962.
- Li G, Li M, Liang X, Xiao Z, Zhang P, Shao M, Peng F, Chen Y, Li Y, Chen Z. 2017. Identifying DCN and HSPD1 as potential biomarkers in colon cancer using 2D-LC-MS/MS combined with iTRAQ technology. *Journal of Cancer* 8:479–489 DOI 10.7150/jca.17192.
- Pan Z, Xie X. 2017. BRCA mutations in the manifestation and treatment of ovarian cancer. *Oncotarget* 8:97657–97670 DOI 10.18632/oncotarget.18280.
- Papapostolou A, Spengos K, Fylaktou I, Poulou M, Gountas I, Kitsiou-Tzeli S, Kanavakis E, Tzetis M. 2014. Are ALOX5AP gene SNPs a risk or protective factor for stroke? *Gene* 548:56–60 DOI 10.1016/j.gene.2014.07.007.
- Priedigkeit N, Watters RJ, Lucas PC, Basudan A, Bhargava R, Horne W, Kolls JK, Fang Z, Rosenzweig MQ, Brufsky AM, Weiss KR, Oesterreich S, Lee AV. 2017. Exome-capture RNA sequencing of decade-old breast cancers and matched decalcified bone metastases. *JCI Insight* 2(17):e95703 DOI 10.1172/jci.insight.95703.
- Reimand J, Isserlin R, Voisin V, Kucera M, Tannus-Lopes C, Rostamianfar A, Wadi L, Meyer M, Wong J, Xu C, Merico D, Bader GD. 2019. Pathway enrichment analysis and visualization of omics data using g: profiler, GSEA, cytoscape and EnrichmentMap. *Nature Protocols* 14:482–517 DOI 10.1038/s41596-018-0103-9.
- Reinartz S, Schumann T, Finkernagel F, Wortmann A, Jansen JM, Meissner W, Krause M, Schworer AM, Wagner U, Muller-Brusselbach S, Muller R. 2014. Mixed-polarization phenotype of ascites-associated macrophages in human ovarian carcinoma: correlation of CD163 expression, cytokine levels and early relapse. *International Journal of Cancer* 134:32–42 DOI 10.1002/ijc.28335.
- Siegel RL, Miller KD, Jemal A. 2016. Cancer statistics, 2016. *CA: A Cancer Journal for Clinicians* 66:7–30 DOI 10.3322/caac.21332.
- Szklarczyk D, Gable AL, Lyon D, Junge A, Wyder S, Huerta-Cepas J, Simonovic M, Doncheva NT, Morris JH, Bork P, Jensen LJ, Mering CV. 2019. STRING-DB v11: protein-protein association networks with increased coverage, supporting functional discovery in genome-wide experimental datasets. *Nucleic Acids Research* 47:D607–D613 DOI 10.1093/nar/gky1131.
- The Gene Ontology Consortium. 2019. The Gene Ontology Resource: 20 years and still GOing strong. *Nucleic Acids Research* 47:D330–D338 DOI 10.1093/nar/gky1055.
- Tomczak K, Czerwinska P, Wiznerowicz M. 2015. The Cancer Genome Atlas (TCGA): an immeasurable source of knowledge. *Contemporary Oncology* 19:A68–A77 DOI 10.5114/wo.2014.47136.
- Von Mering C, Jensen LJ, Snel B, Hooper SD, Krupp M, Foglierini M, Jouffre N, Huynen MA, Bork P. 2005. STRING-DB: known and predicted protein-protein associations. *Nucleic Acids Research* 33:D433–D437 DOI 10.1093/nar/gki005.
- Wang N, Zhang H, Yao Q, Wang Y, Dai S, Yang X. 2012. TGFBI promoter hypermethylation correlating with paclitaxel chemoresistance in ovarian cancer. *Journal of Experimental & Clinical Cancer Research* 31:6–11 DOI 10.1186/1756-9966-31-6.

- Ween MP, Oehler MK, Ricciardelli C. 2012.** Transforming growth factor-beta-induced protein (TGFB1)/(betaig-H3): a matrix protein with dual functions in ovarian cancer. *International Journal of Molecular Sciences* **13**:10461–10477 DOI [10.3390/ijms130810461](https://doi.org/10.3390/ijms130810461).
- Worley BL, Kim YS, Mardini J, Zaman R, Leon KE, Vallur PG, Nduwumwami A, Warrick JI, Timmins PF, Kesterson JP, Phaeton R, Lee NY, Walter V, Endres L, Mythreye K, Aird KM, Hempel N. 2018.** GPx3 supports ovarian cancer progression by manipulating the extracellular redox environment. *Redox Biology* **25**:2213–2317 DOI [10.1016/j.redox.2018.11.009](https://doi.org/10.1016/j.redox.2018.11.009).
- Yoshihara K, Shahmoradgoli M, Martinez E, Vegesna R, Kim H, Torres-Garcia W, Trevino V, Shen H, Laird PW, Levine DA, Carter SL, Getz G, Stemke-Hale K, Mills GB, Verhaak RG. 2013.** Inferring tumour purity and stromal and immune cell admixture from expression data. *Nature Communications* **4**:2612 DOI [10.1038/ncomms3612](https://doi.org/10.1038/ncomms3612).
- Yuan Y, Jiang YC, Sun CK, Chen QM. 2016.** Role of the tumor microenvironment in tumor progression and the clinical applications (Review). *Oncology Reports* **35**:2499–2515 DOI [10.3892/or.2016.4660](https://doi.org/10.3892/or.2016.4660).
- Zhang Z, Qin K, Zhang W, Yang B, Zhao C, Zhang X, Zhang F, Zhao L, Shan B. 2019.** Postoperative recurrence of epithelial ovarian cancer patients and chemoresistance related protein analyses. *Journal of Ovarian Research* **12**:29 DOI [10.1186/s13048-019-0499-z](https://doi.org/10.1186/s13048-019-0499-z).