

OPEN

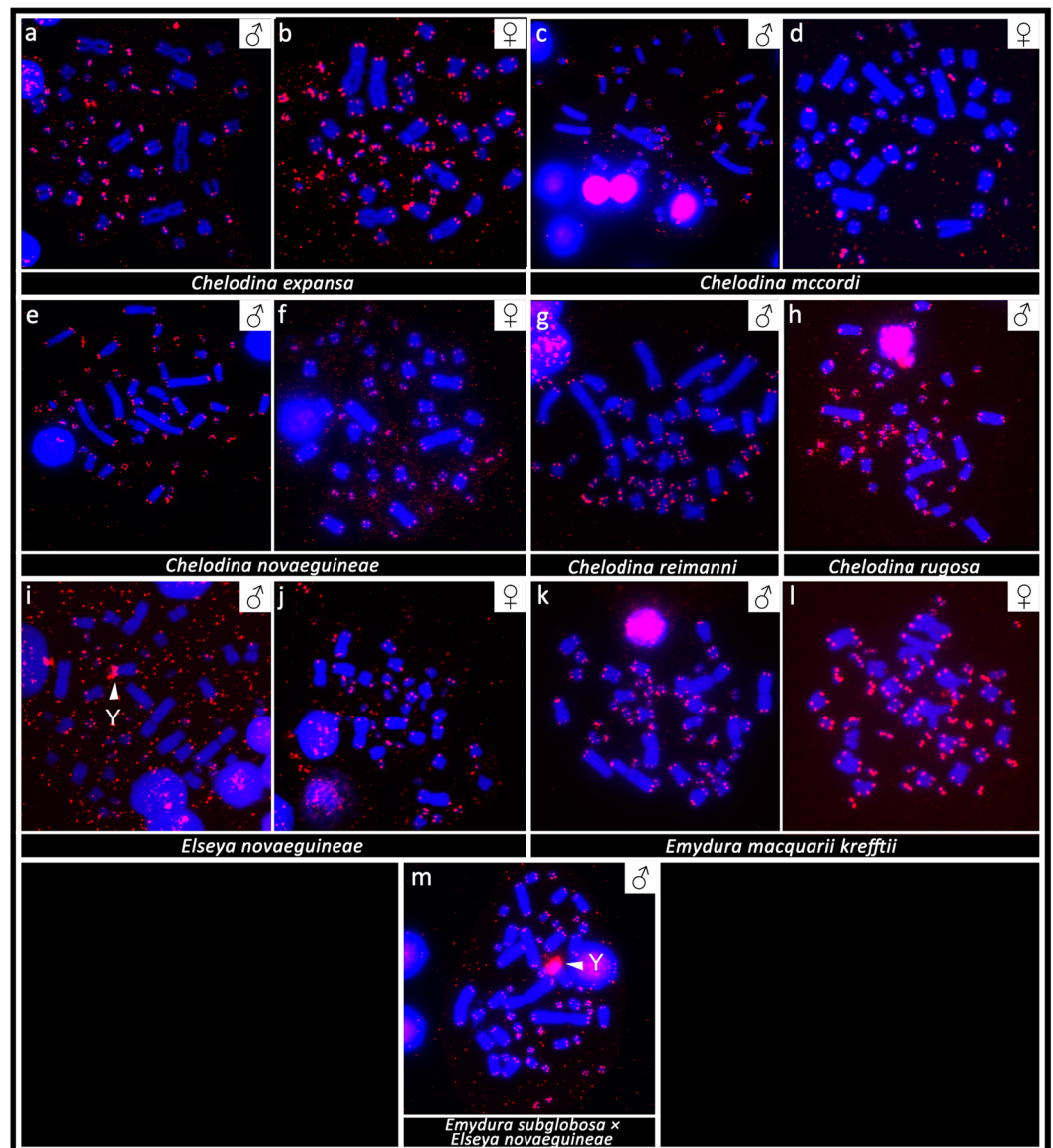
# Author Correction: Sex is determined by XX/XY sex chromosomes in Australasian side-necked turtles (Testudines: Chelidae)

Sofa Mazzoleni, Barbora Augstenová, Lorenzo Clemente, Markus Auer, Uwe Fritz , Peter Praschag, Tomáš Protiva, Petr Velenský, Lukáš Kratochvíl & Michail Rovatsos 

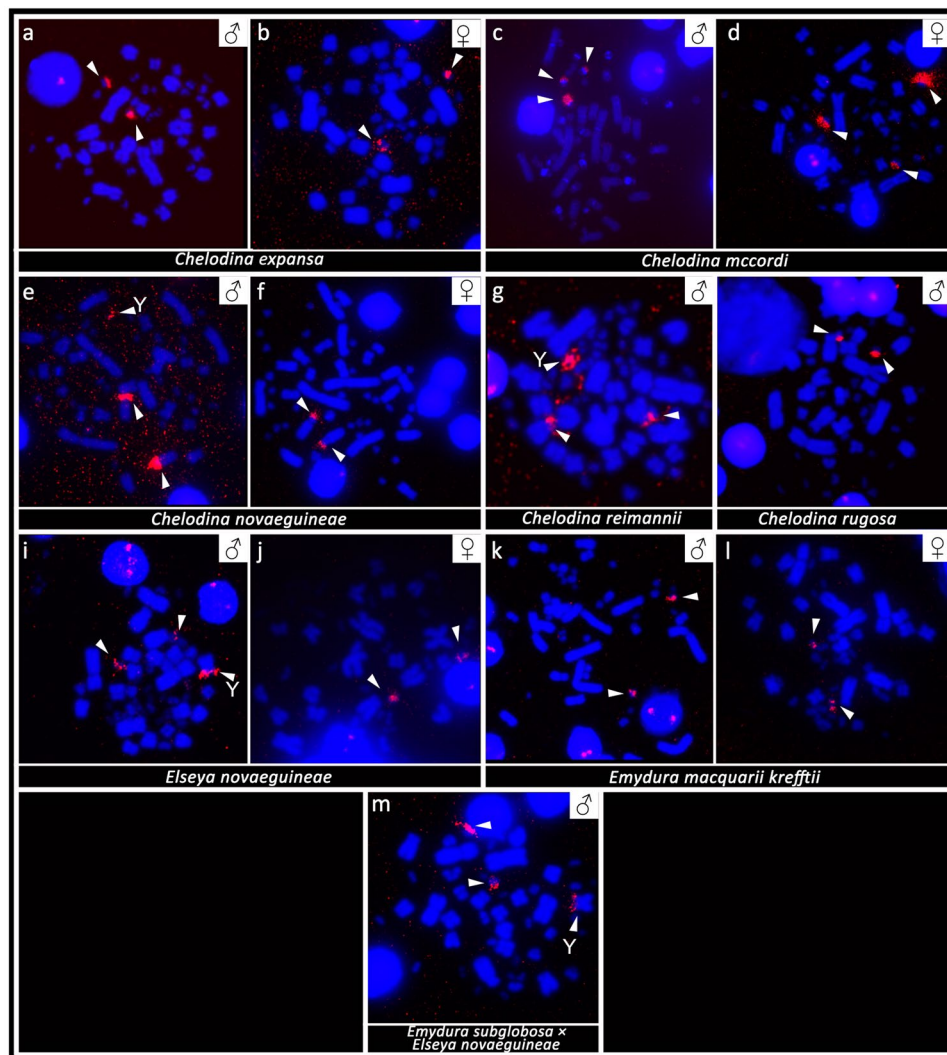
Correction to: *Scientific Reports* <https://doi.org/10.1038/s41598-020-61116-w>, published online 09 March 2020

This Article contains an error in the order of the Figures. Figures 4 and 5 were published as Figures 5 and 4 respectively. The correct Figures 4 and 5 appear below as Figs. 1 and 2. The Figure legends are correct.

Published online: 03 April 2020



**Figure 1.** *In situ* hybridization with probe specific for the (TTAGGG)<sub>n</sub> telomeric motif in *Chelodina expansa* (a,b), *Chelodina mccordi* (c,d), *Chelodina novaeguineae* (e,f), *Chelodina reimanni* (g), *Chelodina rugosa* (h), *Elseya novaeguineae* (i,j), *Emydura macquarii krefftii* (k,l), and the hybrid *Em. subglobosa* × *El. novaeguineae* (m). The FITC signal was pseudocolourized in red. All metaphases were counterstained with DAPI (blue). The Y chromosome is indicated with a white arrow.



**Figure 2.** *In situ* hybridization with probe specific for the rDNA sequence in *Chelodina expansa* (a,b), *Chelodina mccordi* (c,d), *Chelodina novaeguineae* (e,f), *Chelodina reimannii* (g), *Chelodina rugosa* (h), *Elseya novaeguineae* (i,j), *Emydura macquarii krefftii* (k,l), and the hybrid *Em. subglobosa* × *El. novaeguineae* (m). The FITC signal was pseudocolourized in red. All metaphases were counterstained with DAPI (blue). The Y chromosome is indicated with a white arrow.



**Open Access** This article is licensed under a Creative Commons Attribution 4.0 International License, which permits use, sharing, adaptation, distribution and reproduction in any medium or format, as long as you give appropriate credit to the original author(s) and the source, provide a link to the Creative Commons license, and indicate if changes were made. The images or other third party material in this article are included in the article's Creative Commons license, unless indicated otherwise in a credit line to the material. If material is not included in the article's Creative Commons license and your intended use is not permitted by statutory regulation or exceeds the permitted use, you will need to obtain permission directly from the copyright holder. To view a copy of this license, visit <http://creativecommons.org/licenses/by/4.0/>.

© The Author(s) 2020