



SHORT REPORT

Open Access

Molecular modeling and description of a newly characterized activating mutation of the EGFR gene in non-small cell lung cancer

Claudia Otto, Agnes Csanadi, Paul Fisch, Martin Werner and Gian Kayser*

Abstract: Lung cancer is the leading cause of death among malignant diseases in humans worldwide. In the last decade development of new targeted drugs for the treatment of non-small cell lung cancer proved to be a promising approach to prolong the otherwise very poor prognosis of patients with advanced UICC stages. Epidermal growth factor receptor (EGFR) has been in the focus of this lung cancer science and specific activating mutations are eligible for the treatment with specific tyrosine kinase inhibitors like gefitinib or erlotinib. Beside typical deletions in exon 19 and point mutations in exons 18 and 21 several insertions in exon 19 have been described and attributed activating properties as well. This is the first European and overall the 5th description in English literature of one of these specific insertions. To elucidate its structural changes leading to the activating properties we performed molecular modeling studies. These revealed conformational and electrostatic force field changes in the kinase domain of EGFR. To not miss uncommon mutations thorough and precise characterization of EGFR hotspots, i. e. at least exons 18, 19 and 21, should therefore be conducted to provide best medical care and to offer lung cancer patients appropriate cancer treatment.

Virtual slides: The virtual slides for this article can be found here: <http://www.diagnosticpathology.diagnomx.eu/vs/2209889658102062>

Short report

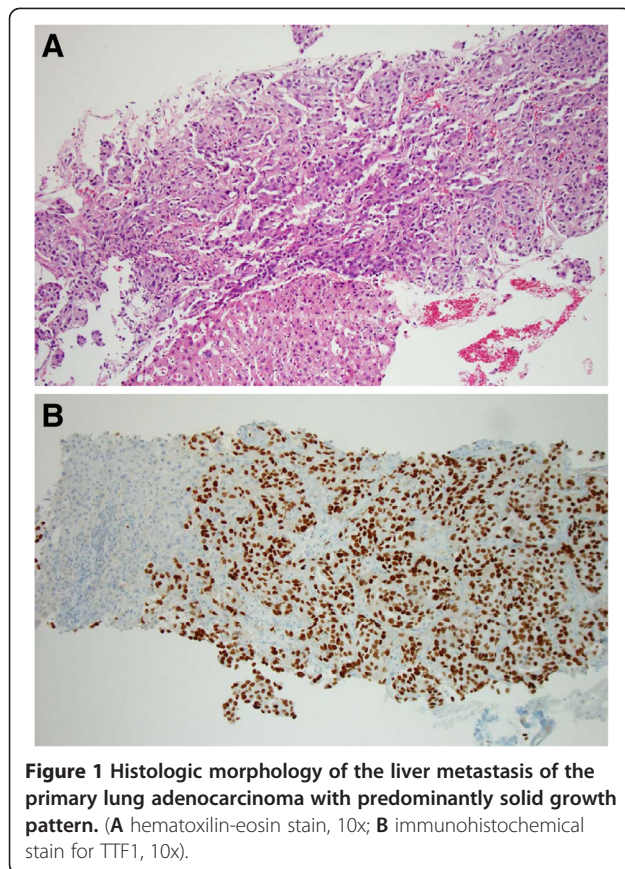
Mutations in the epidermal growth factor receptor (EGFR) are of special diagnostic value in advanced non-small cell lung cancer patients with therapeutic consequences [1-3]. The tyrosine kinase EGFR promotes via KRAS and PI3K mediated pathways tumor cell proliferation, cell survival and escape from apoptosis, while metabolic pathways are shifted towards synthesis of basic cellular elements such as nucleotids, fatty and amino acids [4-7]. Activating mutations in the EGFR gene are located in exons 18 through 21 while more than 90% consist of deletions in exon 19 and L858R substitution in exon 21. These activating mutations are eligible for the treatment with modern tyrosine kinase inhibitors (TKI), e. g. gefitinib or erlotinib [5,8,9]. Just recently, insertions in exon 19 have been described to have an activating character and are responsive to TKI therapy. These shall comprise approximately 1% of EGFR mutations [10]. Described insertions are located at the mutation hotspot of nucleotids 2212 to

2234 thus just prior to the prevalence point of exon 19 deletions [2,10-17].

In a 79 year old Caucasian female patient we were requested to perform EGFR mutation analysis on a liver metastasis of a primary lung adenocarcinoma. The tissue specimen was collected by core biopsy. Histologic examination revealed metastatic formations of a predominantly solid adenocarcinoma. Immunohistochemical nuclear expression of TTF1 proved this to be of primary pulmonary origin (Figure 1). After microdissection of the tumor to enrich neoplastic DNA we performed Sanger sequencing for exons 18, 19 and 21 according to published routine protocol [18]. While exons 18 and 21 were of wildtype sequence this analysis revealed a duplication of 18 nucleotids at position 22147_2235 (c.22147_2235dupl) in exon 19 which leads to the insertion of 6 amino acids (p.K745_E746insIPVAIK) (Figure 2A). Uncommon for EGFR mutations in non-small cell lung cancer the female patient presented here was of older age.

Since this is the 5th description of this specific duplication in exon 19 of the EGFR-gene in English literature and to our knowledge the first in Europe molecular

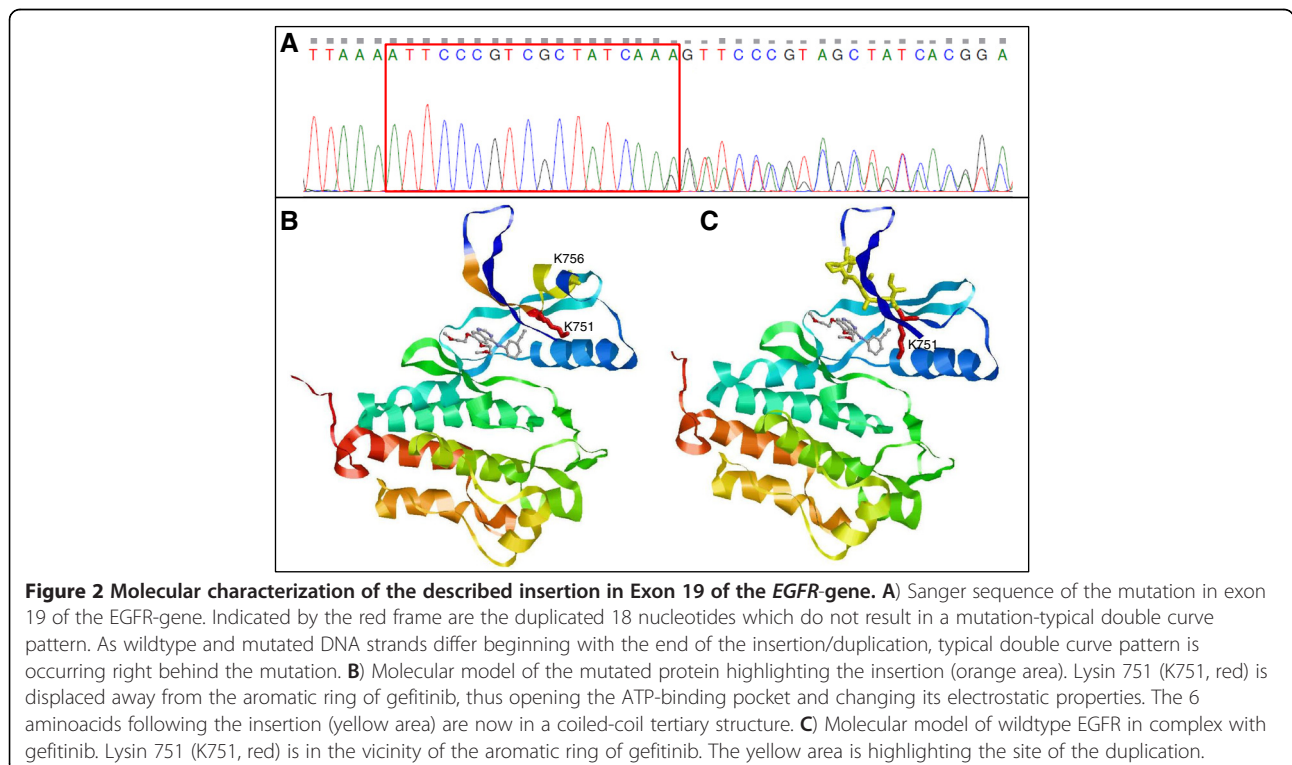
* Correspondence: gian.kayser@uniklinik-freiburg.de
Institute of Pathology, University Medical Center Freiburg, Breisacher Strasse 115a, D-79106 Freiburg, Germany



modeling studies were performed using the SWISS-Prot server [19,20] to investigate the structural changes of this mutation. Crystal structures of wildtype EGFR kinase domain without ligand (protein data bank entry 2gs2) and in complex with gefitinib (protein databank entry 1m17) served as templates for the homology modeling calculations. Visualization confirmed conformational changes in the ATP-binding pocket due to this insertion (Figure 2B and C). Most prominent is the displacement of the side chain residue of Lysin at position 751 (K751). In the wildtype structure this polar side chain is in the vicinity of the hydrophobic aromatic ring of gefitinib. Our modeling results indicate that due to the mutation the hydrophilic residue of Lysin751 opens the binding pocket. This may result in an alteration of electrostatic forces which could lead to a facilitated binding of gefitinib (Figure 2B and C).

Insertions at this site of the EGFR gene result in a change in the ATP-binding pocket allowing a facilitated activation of effector proteins like RAS or PI3Kinase to promote tumor cell proliferation and survival [10,21]. The conformational changes observed here could also explain these published capabilities of exon 19 insertions.

Since exon 19 and especially this subregion of the exon displays a hotspot for genetic mutations of the EGFR gene specific DNA structures at this location on chromosome 7 must prevail. Amongst those small loops due to an adenosine and thymidine rich DNA segment at this location can be suspected to enable cross links in



between the same or the complementary DNA-strand [22]. These cross links may then not only result in deletions, which are the most common mutations at this site of exon 19, but also in a duplication, as described here of 18 nucleotides.

Several methods for the evaluation of EGFR-status in non-small cell lung cancer have been described [23-30]. Nevertheless contemporarily new mutations are being detected and their biological impact is in the focus of scientific research. Thus, complete sequencing of the mutation hotspots, i. e. at least EGFR exons 18, 19 and 21, leads not only to new insights in tumor biology but also has great therapeutical impact for the patient. Only complete sequencing will detect new or uncommon mutations which may also respond to TKI therapy.

Concluding, insertions in exon 19 are likely to respond to TKI therapy. Since not only activating mutations of the EGFR gene exist, but secondary resistance to TKI-therapy can be a result of additional mutations thorough analysis and exact characterization of EGFR mutations by sequence analysis in non-small cell lung cancer should be performed.

Ethics

Data publication is in concordance with the decision of the ethics committee of the University Medical Center Freiburg (EK 10/12).

Competing interests

The authors state that no conflict of interest exists.

Authors' contributions

Clinical assessment and mutation analysis CO and GK; scientific workup and molecular modeling CO, GK; manuscript preparation CO, GK; proofreading: CO, AC, PF, GK, MW. All authors read and approved the final manuscript.

Acknowledgements

The article processing charge was funded by the German Research Foundation (DFG) and the Albert Ludwigs University Freiburg in the funding program Open Access Publishing.

Received: 20 September 2012 Accepted: 17 October 2012

Published: 22 October 2012

References

1. Toyooka S, Kiura K, Mitsudomi T: EGFR mutation and response of lung cancer to gefitinib. *N Eng J Med* 2005, **352**(20):2136. author reply 2136.
2. Uruga H, Kishi K, Fujii T, Beika Y, Enomoto T, Takaya H, Miyamoto A, Morokawa N, Kurosaki A, Yoshimura K: Efficacy of gefitinib for elderly patients with advanced non-small cell lung cancer harboring epidermal growth factor receptor gene mutations: a retrospective analysis. *Intern Med* 2010, **49**(2):103-107.
3. Maemondo M, Inoue A, Kobayashi K, Sugawara S, Oizumi S, Isobe H, Gemma A, Harada M, Yoshizawa H, Kinoshita I, et al: Gefitinib or chemotherapy for non-small-cell lung cancer with mutated EGFR. *N Eng J Med* 2010, **362**(25):2380-2388.
4. Arteaga CL: Epidermal growth factor receptor dependence in human tumors: more than just expression? *Oncologist* 2002, **7**(Suppl 4):31-39.
5. Gazdar AF: Activating and resistance mutations of EGFR in non-small-cell lung cancer: role in clinical response to EGFR tyrosine kinase inhibitors. *Oncogene* 2009, **28**(Suppl 1):S24-S31.
6. Kayser G, Sieneel W, Kubitz B, Mattern D, Stickeler E, Passlick B, Werner M, Zur Hausen A: Poor outcome in primary non-small cell lung cancers is predicted by transketolase TKTL1 expression. *Pathology* 2011, **43**(7):719-724.
7. Shigematsu H, Lin L, Takahashi T, Nomura M, Suzuki M, Wistuba II, Fong KM, Lee H, Toyooka S, Shimizu N, et al: Clinical and biological features associated with epidermal growth factor receptor gene mutations in lung cancers. *J Natl Cancer Inst* 2005, **97**(5):339-346.
8. Shigematsu H, Gazdar AF: Mutations of EGFR in lung cancers and their implications for targeted therapy. *Discov Med* 2004, **4**(24):444-447.
9. Shigematsu H, Gazdar AF: Somatic mutations of epidermal growth factor receptor signaling pathway in lung cancers. *Int J Cancer & Journal International Du Cancer* 2006, **118**(2):257-262.
10. He M, Capelletti M, Nafa K, Yun CH, Arcila ME, Miller VA, Ginsberg MS, Zhao B, Kris MG, Eck MJ, et al: EGFR exon 19 insertions: a new family of sensitizing EGFR mutations in lung adenocarcinoma. *Clinical Can Res* 2012, **18**(6):1790-1797.
11. De Pas T, Toffalorio F, Manzotti M, Fumagalli C, Spitaleri G, Catania C, Delmonte A, Giovannini M, Spaggiari L, de Braud F, et al: Activity of epidermal growth factor receptor-tyrosine kinase inhibitors in patients with non-small cell lung cancer harboring rare epidermal growth factor receptor mutations. *Journal of Thoracic Oncology* 2011, **6**(11):1895-1901.
12. Ilie MI, Hofman V, Bonnetaud C, Havet K, Lespinet-Fabre V, Coelle C, Gavrinc-Tanga V, Venissac N, Mouroux J, Hofman P: Usefulness of tissue microarrays for assessment of protein expression, gene copy number and mutational status of EGFR in lung adenocarcinoma. *Virchows Archiv* 2010, **457**(4):483-495.
13. Job B, Bernheim A, Beau-Faller M, Camilleri-Broet S, Girard P, Hofman P, Mazieres J, Toujani S, Lacroix L, Laffaire J, et al: Genomic aberrations in lung adenocarcinoma in never smokers. *PLoS One* 2010, **5**(12):e15145.
14. Kosaka T, Yatabe Y, Endoh H, Kuwano H, Takahashi T, Mitsudomi T: Mutations of the epidermal growth factor receptor gene in lung cancer: biological and clinical implications. *Cancer Res* 2004, **64**(24):8919-8923.
15. Mitsudomi T, Kosaka T, Endoh H, Horio Y, Hida T, Mori S, Hatooka S, Shinoda M, Takahashi T, Yatabe Y: Mutations of the epidermal growth factor receptor gene predict prolonged survival after gefitinib treatment in patients with non-small-cell lung cancer with postoperative recurrence. *J Clin Oncol* 2005, **23**(11):2513-2520.
16. Okami J, Taniguchi K, Higashiyama M, Maeda J, Oda K, Orita N, Koizumi K, Kodama K, Kato K: Prognostic factors for gefitinib-treated postoperative recurrence in non-small cell lung cancer. *Oncology* 2007, **72**(3-4):234-242.
17. Yoshida Y, Shibata T, Kokubu A, Tsuta K, Matsuno Y, Kanai Y, Asamura H, Tsuchiya R, Hirohashi S: Mutations of the epidermal growth factor receptor gene in atypical adenomatous hyperplasia and bronchioloalveolar carcinoma of the lung. *Lung Cancer* 2005, **50**(1):1-8.
18. Lynch TJ, Bell DW, Sordella R, Gurubhagavatula S, Okimoto RA, Brannigan BW, Harris PL, Haserlat SM, Supko JG, Haluska FG, et al: Activating mutations in the epidermal growth factor receptor underlying responsiveness of non-small-cell lung cancer to gefitinib. *N Eng J Med* 2004, **350**(21):2129-2139.
19. Arnold K, Bordoli L, Kopp J, Schwede T: The SWISS-MODEL workspace: a web-based environment for protein structure homology modelling. *Bioinformatics* 2006, **22**(2):195-201.
20. Kiefer F, Arnold K, Kunzli M, Bordoli L, Schwede T: The SWISS-MODEL Repository and associated resources. *Nucleic Acids Res* 2009, **37**(Database issue):D387-D392.
21. Kumar A, Petri ET, Halmos B, Boggon TJ: Structure and clinical relevance of the epidermal growth factor receptor in human cancer. *J Clin Oncol* 2008, **26**(10):1742-1751.
22. Yang W: Structure and mechanism for DNA lesion recognition. *Cell Res* 2008, **18**(1):184-197.
23. Casorzo L, Corigliano M, Ferrero P, Venesio T, Risio M: Evaluation of 7q31 region improves the accuracy of EGFR FISH assay in non small cell lung cancer. *Diagn Pathol* 2009, **4**:36.
24. Shen S, Qin D: Pyrosequencing data analysis software: a useful tool for EGFR, KRAS, and BRAF mutation analysis. *Diagn Pathol* 2012, **7**:56.
25. Fassina A, Gazziero A, Zardo D, Corradin M, Aldighieri E, Rossi GP: Detection of EGFR and KRAS mutations on trans-thoracic needle aspiration of lung nodules by high resolution melting analysis. *J Clin Pathol* 2009, **62**(12):1096-1102.
26. Yamamoto H, Toyooka S, Mitsudomi T: Impact of EGFR mutation analysis in non-small cell lung cancer. *Lung Cancer* 2009, **63**(3):315-321.
27. Do H, Krypyuk M, Mitchell PL, Fox SB, Dobrovic A: High resolution melting analysis for rapid and sensitive EGFR and KRAS mutation detection in formalin fixed paraffin embedded biopsies. *BMC Cancer* 2008, **8**:142.

28. Raz DJ, Jablons DM: EGFR expression and mutational analysis as a predictive test. *J Clin Oncol* 2007, **25**(15):2144–2145.
29. Daniele L, Macri L, Schena M, Dongiovanni D, Bonello L, Armando E, Ciuffreda L, Bertetto O, Bussolati G, Sapino A: Predicting gefitinib responsiveness in lung cancer by fluorescence in situ hybridization/chromogenic in situ hybridization analysis of EGFR and HER2 in biopsy and cytology specimens. *Mol Cancer Ther* 2007, **6**(4):1223–1229.
30. Soung YH, Lee JW, Kim SY, Seo SH, Park WS, Nam SW, Song SY, Han JH, Park CK, Lee JY, *et al*: Mutational analysis of EGFR and K-RAS genes in lung adenocarcinomas. *Virchows Archiv* 2005, **446**(5):483–488.

doi:10.1186/1746-1596-7-146

Cite this article as: Otto *et al.*: Molecular modeling and description of a newly characterized activating mutation of the EGFR gene in non-small cell lung cancer. *Diagnostic Pathology* 2012 **7**:146.

**Submit your next manuscript to BioMed Central
and take full advantage of:**

- Convenient online submission
- Thorough peer review
- No space constraints or color figure charges
- Immediate publication on acceptance
- Inclusion in PubMed, CAS, Scopus and Google Scholar
- Research which is freely available for redistribution

Submit your manuscript at
www.biomedcentral.com/submit

