

Research article

Open Access

## Interleukin-10 plays an early role in generating virus-specific T cell anergy

Charles H Maris\*<sup>1</sup>, Craig P Chappell<sup>2</sup> and Joshy Jacob<sup>2</sup>

Address: <sup>1</sup>Sidney Kimmel Comprehensive Cancer Center at The Johns Hopkins University, 1650 Orleans Street CRB-1 424, Baltimore, MD 21231, USA and <sup>2</sup>Department of Microbiology and Immunology and the Emory Vaccine Center, Emory University, 954 N. Gatewood Rd, Atlanta, GA 30329, USA

Email: Charles H Maris\* - charlesmaris@gmail.com; Craig P Chappell - cpchapp@emory.edu; Joshy Jacob - jjacob3@emory.edu

\* Corresponding author

Published: 14 June 2007

Received: 16 November 2006

BMC Immunology 2007, 8:8 doi:10.1186/1471-2172-8-8

Accepted: 14 June 2007

This article is available from: <http://www.biomedcentral.com/1471-2172/8/8>

© 2007 Maris et al; licensee BioMed Central Ltd.

This is an Open Access article distributed under the terms of the Creative Commons Attribution License (<http://creativecommons.org/licenses/by/2.0>), which permits unrestricted use, distribution, and reproduction in any medium, provided the original work is properly cited.

### Abstract

**Background:** Infection of mice with the Armstrong strain of lymphocytic choriomeningitis virus (LCMV<sub>ARM</sub>) leads to a robust immune response and efficient viral clearance. This is in contrast to infection with the variant strain LCMV<sub>Clone13</sub>, which causes functional inactivation of effector T cells and viral persistence. The mechanism by which LCMV<sub>Clone13</sub> suppresses the antiviral immune response and persists in its host is unknown.

**Results:** Here we demonstrate that infection with LCMV<sub>Clone13</sub>, but not with LCMV<sub>ARM</sub>, resulted in a steady increase in the serum levels of the immuno-inhibitory cytokine, IL-10. Blockade of IL-10 using neutralizing monoclonal antibody injections in LCMV<sub>Clone13</sub>-infected mice led to dramatically enhanced effector T cell responses at 8 days post-infection. Even though IL-10 blockade resulted in decreased viral titers, the generation and maintenance of memory T cells was still compromised. The functional inactivation of CD8<sup>+</sup> T cells in IL-10-blocked, chronically infected mice 30 days post-infection was incomplete as potent CTL (cytotoxic T lymphocytes) could be generated by *in vitro* re-stimulation. IL-10 knockout mice showed a similar pattern of antiviral CD8 T cell responses: early antiviral T cells were dramatically increased and viral levels were decreased; however, CD8 T cells in IL-10 knockout mice were also eventually anergized and these mice became persistently infected.

**Conclusion:** Our data suggest that IL-10 plays an early role in LCMV<sub>Clone13</sub>-induced tolerance, although other factors collaborate with IL-10 to induce virus-specific tolerance.

### Background

The immune system is versatile in its ability to respond specifically to a wide variety of infectious agents. Specific CD4 and CD8 T cell responses combined with robust antibody responses clear invading viruses. While the host efficiently clears most viruses, some have evolved strategies to evade the immune system and establish persistent infections. Viral persistence has been linked to a variety of

factors, including cell tropism, quantity and duration of antigen persistence and several molecular viral immune evasion strategies [1-8]. The end result is the incapacitation of the immune response and the development of T cell anergy or tolerance [3,9-12].

Cytokines control many aspects of the immune response, and they affect the balance between the development of

immunity and tolerance [9,13]. A robust Th1 response is necessary for the resolution of infection and development of immunity for the majority of viral infections. Interleukin 10 (IL-10), a potent anti-inflammatory cytokine, has been shown to dampen Th1 responses [14,15]. Several groups have shown increased IL-10 levels during a variety of persistent bacterial and parasitic infections, including *Candida albicans*, *Trypanosoma cruzi*, and *Leishmania major* [16-19]. Additionally, viral IL-10 homologues have been identified in the human viruses Epstein-Barr Virus (EBV) and Cytomegalovirus (CMV) that have the ability to persistently infect their hosts, furthering speculation that IL-10 plays a role in sabotaging the adaptive immune response [20-22]. Despite the mounting evidence in other systems, a role for host-produced IL-10 during chronic viral infections has not been carefully studied until recently [23,24].

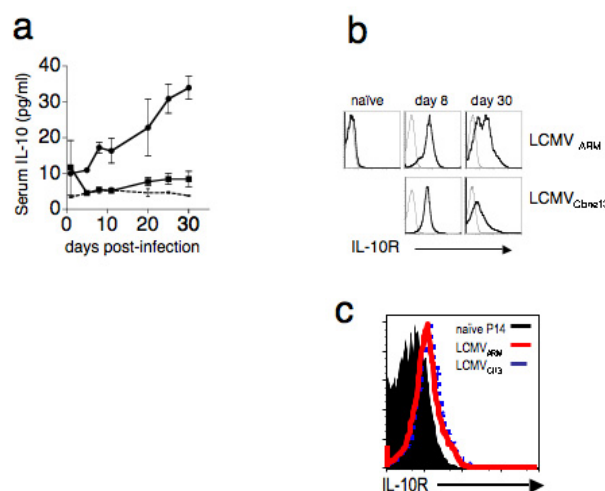
LCMV<sub>ARM</sub>, a natural mouse pathogen, is a prototypic virus infection model for studying effector and memory T cell formation. Infected mice clear LCMV<sub>ARM</sub> within 8 days, and large numbers of memory CD8<sup>+</sup> T cells that confer life-long protective immunity persist in the host. In contrast, infection with LCMV<sub>Clone13</sub>, a two amino acid mutant of LCMV<sub>ARM</sub>, leads to persistent viral infection and T cell anergy: anergic CD8 T cells neither kill virus-infected targets nor produce IFN- $\gamma$  upon peptide stimulation [10]. The current study was undertaken to ascertain if IL-10 plays a role in establishing viral persistence by inducing T cell anergy in LCMV<sub>Clone13</sub>-infected mice. Here we show increased levels of serum IL-10 in mice infected with LCMV<sub>Clone13</sub>, but not LCMV<sub>ARM</sub>. Blocking IL-10 with a neutralizing monoclonal antibody led to partial restoration of T cell function and lowered viral titers if the antibody was administered during T cell priming. The critical window for IL-10 in establishing anergy is early during the immune response, as blockade of IL-10 after viral persistence is established had no effect. However, the necessity of IL-10 in establishing T cell anergy is not complete in that LCMV<sub>Clone13</sub> established a persistent infection in IL-10 deficient mice, despite a robust early CD8 T cell response. This report clearly links persistent LCMV infection of mice, and the ensuing T cell anergy, to host-produced IL-10.

## Results

### Increased IL-10 expression following infection with LCMV<sub>Clone13</sub> but not LCMV<sub>ARM</sub>

Increased levels of inhibitory cytokines such as Interleukin 10 (IL-10) have been demonstrated during persistent viral infections in humans [25,26]. Infection of mice with LCMV<sub>Clone13</sub> induces anergy in CD4 and CD8 T cells, whereas infection with LCMV<sub>ARM</sub> leads to robust immunity [10,27]. We were interested to see if persistent LCMV infection led to increased levels of serum IL-10. We

infected cohorts of mice with either LCMV<sub>ARM</sub> or LCMV<sub>Clone13</sub>, collected their sera at various time points post-infection (p.i.) and measured the IL-10 levels by ELISA (Figure 1a). Other than an early spike of IL-10 detectable on day 2 post-infection, LCMV<sub>ARM</sub>-infected mice had low levels of IL-10 in their serum. IL-10 levels in LCMV<sub>ARM</sub>-infected mice increased slightly above naïve mice as immune memory developed beyond day 20. In contrast, LCMV<sub>Clone13</sub>-infected mice accumulated IL-10 in their serum. Beyond day 2 post-infection, LCMV<sub>Clone13</sub>-infected mice had significantly higher levels of serum IL-10 compared to acutely infected mice, and the levels increased with time. The steady increase in serum IL-10 was concomitant with the functional inactivation, i.e. loss of cytolytic activity and IFN- $\gamma$  production, in CD8 T cells ([28] and Figure 3). These data correlate the T cell anergy observed in persistently LCMV infected mice with an increase in serum IL-10.



**Figure 1**

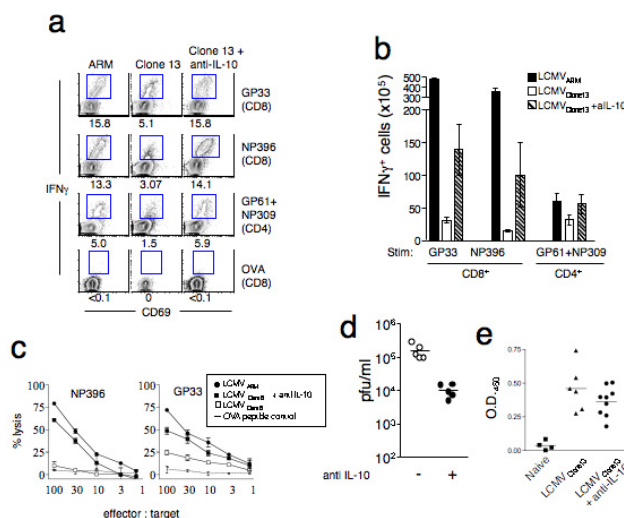
**Serum IL-10 levels in LCMV infected mice.** **a)** Sera from naïve (dashed line) or mice infected with LCMV<sub>ARM</sub> (squares) or LCMV<sub>Clone13</sub> (circles) were assayed for IL-10 by ELISA at the indicated time points. The limit of detection of IL-10 by ELISA was 4 pg/ml. Serum IL-10 levels in naïve mice were at or below the limit of detection. Each time point represents 3–10 mice. **b)** IL-10 receptor expression was measured on CD8<sup>+</sup> T cells in naïve mice and days 8 and 30 post infection by LCMV<sub>ARM</sub> and LCMV<sub>Clone13</sub>. The light line is staining by the isotype control and the bold line is IL-10R expression on gated CD8<sup>+</sup> T lymphocytes. **c)** IL-10R expression on virus-specific CD8 T cells is upregulated in the contexts of acute and viral infection. Mice were infected with LCMV<sub>ARM</sub> (bold red line) or LCMV<sub>Clone13</sub> (dashed blue line) and IL-10R expression was assessed eight days post-infection. Lymphocytes were gated on CD8 and D<sup>b</sup>GP33 tetramers. The solid histogram is the expression of IL-10R on naïve P14 CD8<sup>+</sup> lymphocytes.

CD8 T cells are critical for controlling chronic LCMV infection [27]. In order for IL-10 to directly effect CD8 T cells, they must express the IL-10 receptor. We confirmed IL-10R expression on CD8 T cells during the course of acute and chronic infections. In our hands, IL-10R is universally high at day 8 post-infection for both acute (LCMV<sub>ARM</sub>) and chronic (LCMV<sub>Clone13</sub>) infections. By day 30, IL-10R expression has decreased on a subset of memory CD8 T cells in acutely infected mice. Persistently infected mice, however, lose IL-10R expression on the majority of CD8 T cells, consistent with the deletion of the majority of anti-viral CD8 T cells. We next assessed IL-10R expression directly on LCMV-specific CD8 T cells. We looked at splenic GP33-specific CD8 T cells eight days post-infection, a time during which chronically infected mice contain virus-specific T cells with slightly impaired effector functions. GP33-specific CD8 T cells in both acutely and chronically infected mice had higher IL-10R expression when compared to naïve CD8 T cells. These data are consistent with the model that IL-10 directly affects CD8 T cells.

**IL-10 blockade enhances IFN-γ production in persistently infected mice 8 days post-infection**

We next wanted to determine if neutralizing IL-10 would have an effect on the developing T cell response during a chronic viral infection. We injected LCMV<sub>Clone13</sub>-infected mice with anti-IL-10 antibodies or normal rat IgG on days 0, 2, and 4 after infection. Eight days following infection, CD8<sup>+</sup> and CD4<sup>+</sup> T cell responses were measured by peptide-induced IFN-γ production and cytolytic killing of peptide-pulsed target cells. LCMV<sub>Clone13</sub>-infected animals exhibited depressed CD8 T cell responses: the frequency of cells responding to the immunodominant epitopes NP396 and GP33 was reduced by 60–80% when compared to LCMV<sub>ARM</sub>-infected mice (Figure 2a). In contrast, mice that received IL-10 blockade exhibited enhanced T cell responses. The frequencies of NP396 and GP33 tetramer<sup>+</sup> CD8 T cells were comparable to those observed in LCMV<sub>ARM</sub>-infected mice (data not shown). The amount of IFN-γ production per cell, as measured by mean fluorescence intensity (MFI) was higher in anti-IL-10 treated mice than in LCMV<sub>Clone13</sub>-infected, rat IgG treated controls for both LCMV peptides, GP33 (350 ± 12.5 vs. 248.5 ± 39.5 for anti-IL-10 treated vs. rat IgG treated) and NP396 (204 ± 30 vs. 116.7 ± 12.2).

LCMV<sub>Clone13</sub>-infected mice receiving anti-IL-10 therapy exhibited a level of IFN-γ production that was indistinguishable from LCMV<sub>ARM</sub>-infected mice (Figure 2a). Mice receiving anti-IL-10 therapy had larger spleens and significantly more (5–7 fold) virus-specific CD8<sup>+</sup> T lymphocytes, relative to untreated LCMV<sub>Clone13</sub>-infected control mice (Figure 2b).



**Figure 2**  
**Neutralizing IL-10 leads to enhanced T cell responses in LCMV Clone13-infected mice at day 8 post-infection.**

**a)** Splenocytes from mice infected with LCMV<sub>ARM</sub> (left column), LCMV<sub>Clone13</sub> (middle column), or LCMV<sub>Clone13</sub> and given anti-IL-10 antibodies (right column), were stimulated with LCMV class I peptides, GP33-41 or NP396-404, class II peptides, GP61-80 and NP309-324 and control ovalbumin (OVA) peptides and IFN $\gamma$  production was measured by intra cellular cytokine staining. Numbers below representative plots indicate the frequency CD69<sup>+</sup> IFN $\gamma$ <sup>+</sup> T cells. The cells gated (CD4 or CD8) are indicated in parentheses. Plots are representative of 5 mice in each group. **b)** The total number LCMV-specific IFN- $\gamma$ <sup>+</sup> splenic CD8 and CD4 T cells from the mice infected with LCMV<sub>Clone13</sub>, or LCMV<sub>Clone13</sub> treated with anti IL-10 are shown in open and hatched bars, respectively. Data from acutely-infected LCMV<sub>ARM</sub> mice are shown in the filled bars for comparison. The LCMV peptides used for stimulation and the cell gating strategy are indicated below the graph. These data are representative from two independent experiments; the average of 5 mice per group is graphed. **c)** Anti-IL-10 treated, LCMV<sub>Clone13</sub>-infected mice exhibit potent CTL responses. Splenocytes from uninfected or mice were infected with LCMV<sub>ARM</sub>, LCMV<sub>Clone13</sub>, LCMV<sub>Clone13</sub> plus anti-IL-10 were tested for CTL activity against target cells pulsed with LCMV NP396-404, GP33-41, or control OVA peptides (not shown), 8 days p.i. using a standard 51Cr release assay [33]. **d)** LCMV<sub>Clone13</sub>-infected mice receiving anti-IL-10 mAbs have lower viremia. Day 8 p.i. sera from LCMV<sub>Clone13</sub> infected mice with (filled circles) or without (open circles) anti-IL-10 treatment were tested for infectious virus by plaque assay [35]. **e)** Anti-IL-10 treatment did not lead to enhanced humoral responses at day 8 post-infection. Sera were collected from mice infected with LCMV<sub>Clone13</sub> with and without anti-IL-10 treatment at 8 days post-infection and LCMV-specific antibodies were assessed by ELISA. There was no statistical difference (p = 0.2) in the serum anti-LCMV antibody levels between these two groups.

CD4 T cells are essential for maintaining antiviral CD8 T cells [27,29]. Therefore, we monitored the effect of anti-IL-10 treatment on rescuing virus-specific CD4 T cell function by testing their ability to produce IFN- $\gamma$  upon stimulation with the LCMV MHC class II peptides GP61 and NP309. Anti-IL-10-treated mice exhibited higher levels of IFN- $\gamma$  production by CD4<sup>+</sup>T cells at 8 days p.i. ( $5.5\% \pm 1.2$  vs.  $1.5\% \pm 0.7$  for anti-IL-10 treated vs. untreated LCMV<sub>Clone13</sub>-infected mice,  $p = 0.033$ , Figure 2a). The absolute numbers of LCMV-specific CD4 T cells were also higher in the anti-IL-10 treated LCMV<sub>Clone13</sub>-infected group as compared to LCMV<sub>Clone13</sub>-infected mice that did not receive anti-IL-10 treatment (Figure 2b). Thus, neutralizing IL-10 during the time that T cell priming occurs drastically enhanced peak antigen-specific CD4 and CD8 T cell responses, both in absolute numbers and in function as measured by IFN- $\gamma$  production.

#### **IL-10 blockade restores CTL activity and lowers viral load**

Cytolytic killing is a hallmark of activated antigen-specific CD8 T cells, and it is one of the first properties to be lost in persistently infected mice [10,27]. We wanted to know if IL-10 blockade restored the cytolytic activity of CD8 T cells. We measured the cytolytic activity of CD8 T cells by <sup>51</sup>Cr release assay using target cells pulsed with the immunodominant LCMV peptides NP396 and GP33 (Figure 2c). Killing of target cells was dramatically impaired in LCMV<sub>Clone13</sub>-infected mice at 8 days p.i., but neutralizing IL-10 *in vivo* restored cytotoxic activity nearly to levels observed in LCMV<sub>ARM</sub>-infected mice (Figure 2c). We then tested the mice to determine whether enhanced T cell responses induced by neutralizing IL-10 led to a reduction in viral load. Despite the improved CTL and cytokine responses in mice receiving IL-10 blockade (Figure 2a–c), they still had infectious virus (Figure 2d). However, the level of viremia was significantly reduced ( $> 1$  log) in mice receiving IL-10 blockade ( $1.6 \times 10^5 \pm 3.9 \times 10^4$  pfu/ml,  $n = 5$ , for LCMV<sub>Clone13</sub> infections vs.  $2.3 \times 10^4 \pm 6.7 \times 10^3$  pfu/ml,  $n = 5$ , for LCMV<sub>Clone13</sub> plus anti-IL-10,  $p = 0.0076$ ). The lowered viral titers observed at day 8 p.i. could be due to enhanced cytolytic T cell activity or due to an enhanced antibody response to LCMV in anti-IL-10 treated mice, or a collaboration of the two effects. To distinguish between these two possibilities we compared the anti-LCMV antibody responses at day 8 post-infection in groups of LCMV<sub>Clone13</sub>-infected mice with or without anti-IL-10 treatment. Anti-IL-10 blockade did not result in enhanced virus-specific humoral responses (Figure 2e). LCMV-specific IgG levels in the IL-10-blocked, persistently infected mice were not significantly different than untreated controls at day 8 post infection ( $p = 0.2$ ). The data suggest that enhanced cytotoxic CD8 T cell responses and not humoral responses are responsible for the lowered viral titers observed in the anti-IL-10 treated mice early in the response. These data further support the con-

cept that host-produced IL-10 directly impacts LCMV-specific CD8 T cells early during the immune response.

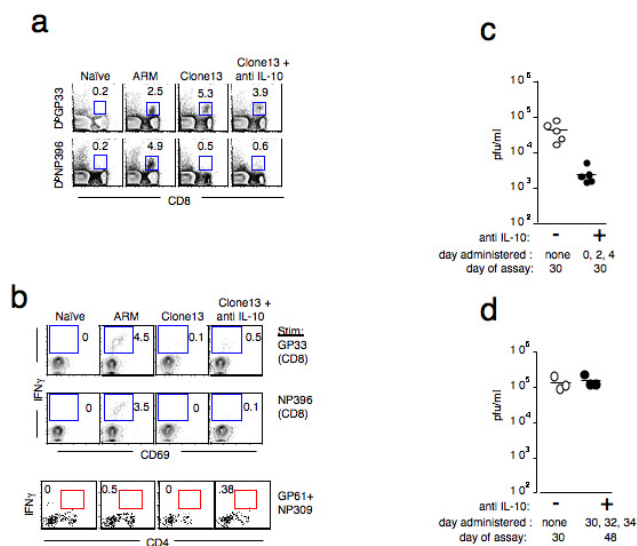
#### **Despite the initial enhanced response, mice receiving a short course of IL-10 blockade contain a mixture of functional and anergized CD8 T cells, and exhibit a low-level persistent viremia**

In LCMV<sub>Clone13</sub>-infected mice receiving IL-10 blockade, IFN- $\gamma$  production and cytolytic killing by CD8 T cells were intact, and CD4 T cell responses were also enhanced at day 8 p.i. (Figure 2a). It was essential to determine if this potent antiviral immune response could develop into immune memory and resolve the viral infection. We analyzed CD8 T cells from immune LCMV<sub>Clone13</sub>-infected mice (day 30) with and without IL-10 blockade for LCMV-specific MHC/tetramer binding (Fig. 3a) and IFN- $\gamma$  production (Fig. 3b). In untreated LCMV<sub>Clone13</sub>-infected mice, we observed large numbers of GP33 tetramer<sup>+</sup> CD8 T cells that failed to produce IFN- $\gamma$ , a characteristic phenotype of anergized virus-specific T cells [10]. CD8 T cells specific for the NP396 epitope were mostly deleted and the rare NP396 tetramer binding cells that were present failed to produce IFN- $\gamma$  upon peptide stimulation. In contrast, mice receiving IL-10 blockade had a small fraction of CD8 T cells that produced IFN- $\gamma$  when stimulated with GP33 peptide ( $0.5\% \pm 0.2$  vs.  $0.1\% \pm 0.1\%$ , Fig. 3b), indicating that, at least on some level, functional CD8 T cells were present in persistently infected mice that received IL-10 blockade. Persistently infected, anti-IL-10 treated mice deleted NP396-specific CD8 T cells, similar to LCMV<sub>Clone13</sub>-infected, rat IgG-treated control mice. Taken together, the tetramer and IFN- $\gamma$  data for two immunodominant epitopes suggest that the generation of virus-specific memory cells was impaired although some GP33-specific CD8 T cells that retain IFN- $\gamma$  production persisted in mice that received IL-10 blockade (Figure 3b). We also monitored CD4 T cell responsiveness at 30 days p.i. A small population of GP61/NP309-specific CD4<sup>+</sup> T cells remained in IL-10 blocked mice, although the MFI of IFN- $\gamma$  production was low (Figure 3b).

Anti-IL-10 treated, LCMV<sub>Clone13</sub>-infected mice remained persistently infected at 30 days p.i. (Figure 3c). However, viremia was approximately 1.5 logs lower in LCMV<sub>Clone13</sub>-infected mice that received anti-IL-10 therapy ( $2.4 \times 10^3 \pm 6.6 \times 10^2$  pfu/ml,  $n = 5$ , for LCMV<sub>Clone13</sub> plus anti-IL-10 vs.  $4.2 \times 10^4 \pm 1.1 \times 10^4$  pfu/ml,  $n = 5$ , for LCMV<sub>Clone13</sub>).

#### **IL-10 blockade in mice with established persistent infections did not result in enhanced T cell responsiveness or lowered viral titers**

Blocking IL-10 early in the infection during T cell priming (days 0–4) led to enhanced LCMV-specific T cell responses and lower viral titers. We wanted to know if blocking IL-10 was a useful strategy in lowering viral titers



**Figure 3**  
**Early anti-IL-10 therapy improves virus control 30 days p.i.** **a)** Spleen cells from naïve, LCMV<sub>ARM</sub>, and LCMV<sub>Clone13</sub>-infected mice with and without anti-IL-10 treatment (day 30 p.i.) were stained with LCMV tetramers D<sup>b</sup>GP33 and D<sup>b</sup>NP396. The numbers shown are the frequency of tetramer<sup>+</sup> cells per CD8<sup>+</sup> T cells. Plots are representative of 5 mice. **b)** IFN $\gamma$  production by CD8 T cells 30 days p.i. Splenocytes were stimulated with LCMV MHC class I restricted peptides, GP33-41 or NP396-404 or class II peptides GP61-80 and NP309-324 and then assayed for IFN $\gamma$  production by ICCS. All plots are gated on CD8 T cells and the numbers indicate the frequency of CD69<sup>+</sup> IFN $\gamma$ <sup>+</sup> cells. **c)** Anti-IL-10 treated mice exhibited lower viremia at 30 days p.i. Sera from LCMV<sub>Clone13</sub>-infected mice without (open circles) and with (filled circles) anti-IL-10 treatment were titered for infectious virus by plaque assay. Naïve and LCMV<sub>ARM</sub> immune mice were free of virus (not shown). **d)** Anti-IL-10 treatment in mice with established persistent infections does not lead to lowering of viral titers. Cohorts of mice infected 30 days earlier with LCMV<sub>Clone13</sub> were injected with anti IL-10 therapy on days 30–34 p.i. Their sera were collected two weeks later and assayed for infectious virus by plaque assay. The LCMV titers from untreated (open circles) and anti-IL-10 treated (filled circles) mice are shown.

in mice with established persistent infections. We chose mice that were persistently infected with LCMV<sub>Clone13</sub> (day 30 p.i.) and injected them with normal rat IgG or anti-IL-10 antibodies on days 30, 32 and 34 post-infection. Two weeks following anti-IL-10 treatment we assayed these mice for CD4 and CD8 T cell function and measured serum viral titers. IL-10 blockade after establishment of viral persistence had no effect on LCMV-induced T cell tolerance. T cell anergy could not be reversed (data not shown), and there was no change in viremia (Figure 3d). T cells from mice treated with anti-IL-10 late in the infection were non-functional and indistinguishable from

untreated LCMV<sub>Clone13</sub>-infected mice (data not shown). These data suggest that there is an early critical window during which IL-10 works to induce anergy in T cells.

**Mice receiving early anti-IL-10 therapy exhibit CTL activity following in vitro re-stimulation**

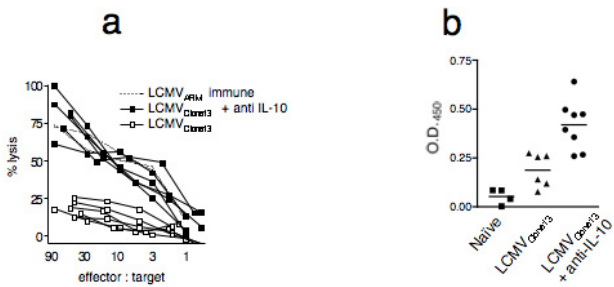
Next, we wanted to know if the anergy observed in anti-IL-10 treated, LCMV<sub>Clone13</sub>-infected mice was complete and irreversible, or if the effector/memory T cells that remained could expand and function. Splenocytes from LCMV<sub>Clone13</sub>-infected mice (day 30 p.i.) were stimulated in vitro with GP33 peptide, in the presence of IL-2, for 5 days and their ability to kill target cells was determined by <sup>51</sup>Cr release assay (Figure 4a). Re-stimulation in vitro restored cytolytic activity of LCMV<sub>Clone13</sub>-infected anti-IL-10 treated mice; their CTL activity was comparable to LCMV<sub>ARM</sub>-immune mice. In contrast, GP33-specific CD8 T cells from LCMV<sub>Clone13</sub>-infected, untreated mice were refractory to peptide re-stimulation and failed to kill target cells. These data clearly demonstrate that IL-10 blockade early in the viral infection led to incomplete tolerization of virus-specific CD8 T cells despite the fact that these mice had low-level viremia.

**Mice receiving anti IL-10 therapy have an enhanced antibody response against LCMV 30 days post-infection**

We assessed the antiviral antibody titers 30 days p.i. in LCMV<sub>Clone13</sub>-infected mice with and without anti IL-10 treatment (Figure 4b). Interestingly, mice receiving IL-10 blockade had significantly greater levels of LCMV-specific antibodies than mice that did not receive anti-IL-10 therapy (O.D. 0.4201 ± 0.045, n = 8 vs. 0.1875 ± 0.035, n = 6, p = 0.002). The level of antiviral IgG in LCMV<sub>ARM</sub> immune mice was much greater than the LCMV<sub>Clone13</sub>-infected mice that received anti-IL-10 blockade (1.151 ± 0.042, n = 10 versus 0.4201 ± 0.045, n = 8, p < 0.0001, not shown). These data, combined with the low antiviral antibody levels seen 8 days p.i., show that the LCMV-specific antibody response matured with time in the IL-10 blocked mice.

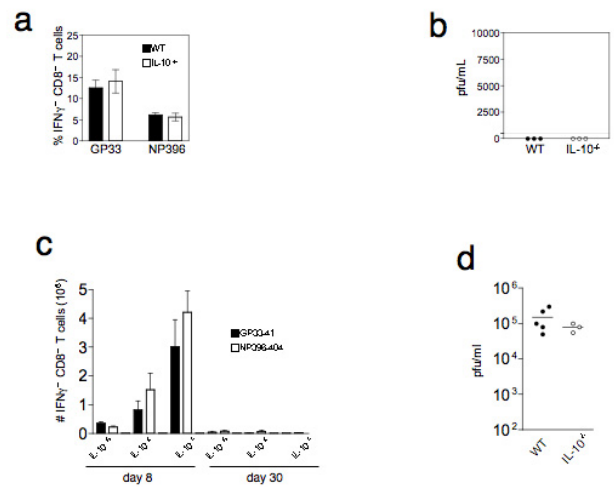
**IL-10 knockout mice recapitulate the phenotype observed in anti-IL-10 antibody treated mice: early T cell enhancement followed by induction of anergy**

The data presented so far clearly show that IL-10 blockade led to enhanced early T cell responses but not the eradication of virus. One possibility is that the T cell anergy observed at 30 days p.i. could be due to the inefficiency of the antibody treatment. Continued blockade of IL-10 throughout the course of persistent LCMV<sub>Clone13</sub> infection may result in complete viral clearance and the development of T cell immunity. To decisively determine the causal role of IL-10 in generating T cell anergy during persistent viral infections, and to avoid the vagaries of multiple injections of heterospecific neutralizing antibodies,



**Figure 4**  
**LCMVClone13 infection induced anergy induced in CD8 T cells is reversed by anti-IL-10 treatment. a)** Splenocytes from LCMV<sub>ARM</sub> immune (dashed line), LCMV<sub>Clone13</sub>-infected with (closed square) or without (open square) anti-IL-10 (day 30 p.i.), were stimulated in vitro for 5 days with LCMV GP33 peptide and IL-2, and their capacity to lyse LCMV GP33 peptide-pulsed targets was measured by <sup>51</sup>Cr release assay. The effector to target ratio was calculated based on CD8 frequency. There were 5–7 mice per group, each line represents one mouse. Background killing in unpulsed target cells was less than 10%. **b)** The amount of anti-LCMV IgG, 30 day p.i., in the sera of naïve (filled squares), LCMV<sub>Clone13</sub> infected with (filled triangles) and without anti IL-10 treatment (filled circles) was measured by ELISA. The difference in anti-viral IgG between the LCMV<sub>Clone13</sub>-infected mice receiving anti-IL-10 versus untreated is statistically significant (p = 0.002).

we attempted to persistently infect IL-10 deficient mice. We first tested the ability of IL-10<sup>-/-</sup> mice to clear acute LCMV<sub>ARM</sub> infections. Cohorts of IL-10<sup>-/-</sup> mice were infected with 2 × 10<sup>5</sup> pfu of LCMV<sub>ARM</sub> and their ability to mount T cell responses and clear virus was assayed at 8 days post infection. IL-10<sup>-/-</sup> mice mounted robust CD8 T cell responses (Figure 5a) and cleared LCMV<sub>ARM</sub> (Figure 5b) as efficiently as wild type mice. We then infected IL-10<sup>-/-</sup> mice with LCMV<sub>Clone13</sub> and examined their T cell responses and ability to clear virus at days 8 and 30 p.i. IL-10<sup>-/-</sup> mice exhibited exaggerated T cell responses at 8 days p.i., while wild type mice exhibited virus-induced immune suppression. Interestingly, heterozygous IL-10<sup>+/-</sup> littermate controls exhibited T cell responses intermediate between those of control IL-10<sup>+/+</sup> and IL-10<sup>-/-</sup> mice (Figure 5c). However with time, IL-10<sup>-/-</sup> mice, as well as IL-10 heterozygotes, lost their virus-specific CD8<sup>+</sup> T cells and became persistently infected by day 30 p.i. (Figures 5c, d). We also tracked the IFN-γ responses to three other LCMV epitopes, including subdominant epitopes, and the patterns were identical (data not shown); responses to all epitopes tested were absent 30 days p.i. in IL-10<sup>-/-</sup> mice. These data confirm and extend the observations made using anti-IL-10 antibody treatment and clearly demonstrate that IL-10 plays a direct and early role in generating T cell tolerance; however, additional mechanisms are



**Figure 5**  
**IL-10<sup>-/-</sup> efficiently clear LCMV<sub>ARM</sub> but upon infection with LCMV<sub>Clone13</sub> these mice exhibit an early enhanced T cell response, followed by anergy and viral persistence. a)** IL-10<sup>-/-</sup> (open bars) or control wild type (WT) C57BL/6 (filled bars) mice were infected with LCMV<sub>ARM</sub> and 8 days later the CD8 T cells were assayed for their ability to produce IFN-γ upon stimulation with LCMV peptides, GP33 and NP396. The frequencies (± standard deviation) of IFN-γ<sup>+</sup> CD8<sup>+</sup> T cells for the two groups of mice are shown; there was no significant difference between the groups. **b)** IL-10<sup>-/-</sup> mice clear LCMV<sub>ARM</sub> as efficiently as C57BL/6 mice. Groups of mice were infected with 2 × 10<sup>5</sup> pfu LCMV<sub>ARM</sub> and eight days post infection, the sera from IL-10<sup>-/-</sup> (open circles) and WT, C57BL/6 (filled circles) mice were assayed for infectious virus by plaque assay. **c)** Cohorts of C57BL/6 (IL-10<sup>+/+</sup>), IL-10<sup>+/-</sup> and IL-10<sup>-/-</sup> mice were infected with LCMV<sub>Clone13</sub> and 8 or 30 days later, the ability of CD8 T cells to produce IFN-g upon stimulation with LCMV peptides, GP33 (filled bars) and NP396 (open bars) were assayed by intracellular cytokine staining. The absolute numbers of splenic IFN-γ<sup>+</sup> CD8<sup>+</sup> T cells (± SD) for the three groups are plotted. Robust CD8 T cells responses were observed in IL-10<sup>-/-</sup> mice. For each of the peptide stimulation at day 8, the numbers of IFN-γ<sup>+</sup> CD8<sup>+</sup> T cells in IL-10<sup>-/-</sup> were statistically significant than those in IL-10<sup>+/-</sup> (p < 0.01) and IL-10<sup>+/+</sup> (p < 0.001) mice. The numbers of IFN-γ<sup>+</sup> CD8 T cells in IL-10<sup>+/-</sup> and wild type, IL-10<sup>+/+</sup> mice were not statistically significant. **d)** Both IL-10<sup>+/+</sup> and IL-10<sup>-/-</sup> mice remained persistently infected, 30 days after infection with LCMV<sub>Clone13</sub>. Sera from infected, IL-10<sup>-/-</sup> (open circles) and IL-10<sup>+/+</sup> (filled circles) were assayed for virus by plaque assay. The difference in the viral titers between the two groups was not statistically significant. Each dot represents an individual mouse.

operating to generate and/or maintain virus-induced anergy.

**Discussion**

Early anti-IL-10 therapy resulted in an impressive enhancement in the cellular immune response to

LCMV<sub>Clone13</sub> at 8 days p.i. and the humoral immune response 30 days p.i. IL-10-blocked mice had significantly higher IFN- $\gamma$  production in CD8 and CD4 T cells, both in frequency and magnitude. Cytolytic activity was also enhanced in the anti-IL-10 treated mice. Thus, IL-10 blockade clearly bolstered the early immune response to LCMV such that the immune response in LCMV<sub>Clone13</sub>-infected mice receiving anti-IL-10 was indistinguishable from non-persisting LCMV<sub>ARM</sub> acute infections at 8 days p.i. However, neutralizing IL-10 did not completely block virus-induced CD8 T cell inactivation. Thirty days p.i., LCMV<sub>Clone13</sub>-infected mice receiving anti-IL-10 contained GP33-specific CD8 T cells, the majority of which failed to produce IFN- $\gamma$ , or were 'exhausted', although, some did retain the ability to produce IFN- $\gamma$  upon peptide re-stimulation. Interestingly, the functional deficit observed in CD8 T cells in anti-IL-10 treated mice was not complete; cytolytic killing could be rescued by peptide re-stimulation *in vitro* in the presence of IL-2. While early anti-IL-10 treatment did not prevent viral persistence, these mice exhibited significantly lower viremia compared to rat IgG-treated control mice.

Although IL-10 blocked mice became chronically infected, we were able to rescue cytolytic killing following *in vitro* stimulation in the presence of IL-2 (Figure 4a). However, in our *in vitro* studies it was impossible to determine if we rescued cytolytic killing in all or only a fraction of GP33-specific CD8 T cells. Indirect evidence, presented in Fig. 3a & 3b, shows that whereas nearly all virus-specific memory cells in acutely infected mice produce IFN- $\gamma$  when stimulated, only a fraction of virus-specific CD8 T cells in chronically-infected IL-10-blocked mice were able to make IFN- $\gamma$ . Although IFN- $\gamma$  production and IL-2 receptivity are not clearly or directly linked, these data suggest that we were able to rescue cytolytic killing in only a fraction of virus-specific CD8 T cells in the IL-10 blocked mice. Indeed, others have shown that the majority of memory cells proliferate in response to IL-2 [30]. That same group showed that anergized cells did expand in response to IL-2 in the context of persisting antigen, although it was unclear what proportion of virus-specific CD8 T cells were proliferating.

Our data support a scenario in which neutralizing IL-10 enhances the initial CD4 T cells, which in turn leads to an increased magnitude and maintenance of virus-specific CD8 T cells early in the response, possibly by sustained IL-2 production. Additionally, neutralizing IL-10 may have direct effect on CD8 T cells, as indicated by the increased IL-10R expression on virus-specific CD8 T cells (Fig. 1b). Virus-specific CD8 T cells with enhanced cytolytic activity keep the initial virus levels low. At this early phase, antibody levels may play a minimal role. Thirty days later, when the majority of CD8 T cells are rendered non-functional

by the persistent virus, viremia is kept low by virus-specific antibodies. It is clear from our data that IL-10 plays a critical role in inducing T cell anergy during persistent LCMV<sub>Clone13</sub> infections, and that its effect is most potent early in the immune response. Neutralizing IL-10 does not completely block immune tolerance or prevent viral persistence, suggesting that other factors are playing a significant role.

A potential criticism of the antibody-mediated IL-10 neutralization studies is that IL-10 was not blocked throughout the course of the virus-infection. Perhaps continued IL-10 blockade would have led to eventual clearance of virus. Our experiments in IL-10<sup>-/-</sup> mice unequivocally settle this issue. IL-10 deficiency resulted in improved early adaptive immune responses similar to the antibody-mediated IL-10 neutralization studies. However, with time, CD8 T cells from IL-10<sup>-/-</sup> mice became non-functional and the mice were persistently infected. Thus, whether by antibody-mediated neutralization or by genetic disruption, the removal of IL-10 had a drastic stimulatory effect on the early antiviral CD8<sup>+</sup> and CD4<sup>+</sup> T cell responses but its effects were minimal later in the response. This finding leads us to conclude that IL-10 exerts its strongest effect early during infection and other factors operate later during infection to bring about virus-induced T cell tolerance, such as TGF- $\beta$  or PD-1 expression on CD8 T cells [31].

Inducing IL-10 production in the host or encoding homologues of IL-10 is a common strategy utilized by various pathogens to induce anergy in the host [15]. Here we show that LCMV<sub>Clone13</sub> also uses this strategy to subvert the host immune response. LCMV<sub>Clone13</sub> differs from the Armstrong strain by two amino acids, one in the polymerase and the other in the glycoprotein (GP). The mutation in the polymerase enables the virus to replicate at a higher rate than LCMV<sub>ARM</sub> [27,32]. Interestingly, the mutation in GP alters its tropism. Oldstone and colleagues have elegantly shown that LCMV<sub>Clone13</sub> infects DEC205<sup>+</sup> CD11c<sup>+</sup> dendritic cells while LCMV<sub>ARM</sub> fails to do so [1,2]. We speculate that infection of DCs with LCMV<sub>Clone13</sub> leads to IL-10 production by these cells directly or, alternatively, infected DCs could induce regulatory T cells that in turn would secrete IL-10. Our experiments clearly show that while IL-10 is important for virus-induced tolerance induction, there must be other factor(s) that are involved as well. Whether these are IL-10 family members [15] such as IL-19, IL-20, IL-22, AK155 and mda-7 or immunomodulatory cytokines such as TGF- $\beta$ , remains to be investigated. Clearly, ligation of PD-1 on CD8 T cells by PD-L1 and/or PD-L2 can have a suppressive effect, but the kinetics of co-stimulation and co-inhibition during chronic LCMV<sub>Clone13</sub> infections have not been clearly defined.

During the preparation of this manuscript, it has come to the attention of the authors that other laboratories have performed similar experiments with differing results ([24,23]). Although the authors used a blocking antibody to IL-10R that may have been more efficacious than neutralizing IL-10 directly with different kinetics of administration, Brooks *et al.* also performed LCMV<sub>Clone13</sub> infections in IL-10 knockout mice and observed viral clearance. The route and amount of virus, as well as the genetic background of the IL-10<sup>-/-</sup> mice, were reportedly identical to those used in our studies; as such, we have no explanation for the difference in outcome.

## Conclusion

The data presented in this paper show that IL-10 assists in generating T cell anergy to a viral infection, and that its role is perhaps most important during T cell priming. Serum IL-10 levels increased during chronic LCMV infections, and neutralizing IL-10 with a monoclonal antibody resulted in improved antiviral CD8 and CD4 T cell responses, as well as antiviral B cell responses. In agreement with our antibody studies, chronically infected IL-10 deficient mice displayed CD8 T cell responses that were indistinguishable from IL-10-blocked mice: the early antiviral response was significantly enhanced. However, both IL-10-blocked mice and IL-10 deficient mice were eventually tolerized to LCMV, evidenced by the presence of anergic virus-specific CD8 T cells and persisting virus. These data suggest that although host-produced IL-10 plays a role in generating virus-specific tolerance early during infection, other factors collaborate to completely tolerize CD8 T cells.

## Methods

### Mice and viral infections

All animal experiments were conducted with IACUC approval. C57BL/6J mice and P14 (B6;D2-Tg(TcrLCMV)327Sdz/JDvsJ) mice maintained on a B6 background were purchased from the Jackson Laboratory (Bar Harbor, ME) and maintained under specific-pathogen-free conditions in the rodent vivarium at the Emory Vaccine Center. IL-10 knockout mice were a kind gift from Dr. Elizabeth Bonney (University of Vermont). Viruses, LCMV<sub>ARM</sub> and LCMV<sub>Clone13</sub> were kind gifts from Dr. R. Ahmed (Emory University) and Dr. A. Zajac (University of Alabama, Birmingham). Non-persistent and persistent infections were generated by injecting mice with  $2 \times 10^5$  pfu LCMV<sub>ARM</sub> intraperitoneally or  $2 \times 10^6$  pfu LCMV<sub>Clone13</sub> intravenously, respectively. Cohorts of LCMV<sub>Clone13</sub>-infected mice received normal rat IgG (Sigma) or anti-IL-10 (BD Biosciences) injections either early (200 µg on day 0, 100 µg on days 2 and 4), or late (100 µg each on days 30, 32, and 34).

### Flow cytometry

Flow cytometry was performed on spleen cell suspensions as described [33]. Intracellular cytokine staining (ICCS) was done on splenocytes that were stimulated with LCMV-specific MHC class I peptides, NP396-404 and GP33-41, or MHC class II peptides, NP309-324 and GP61-80 [34], or ovalbumin SIINFEKL (OVA). Anti-CD210 (IL-10R, BD Biosciences) staining was performed intracellularly on peptide stimulated splenocyte cultures.

### IL-10 ELISA

Mouse sera were collected and ELISAs were performed using the IL-10 Quantikine M kit (R & D Systems).

### Viral load plaque assay

Serum LCMV titers in serum were determined by plaque assay as described [33].

### CTL assay

CTL assays were performed using a standard <sup>51</sup>Cr release assay using targets pulsed with LCMV NP396-404, GP33-41, or OVA peptides as described [33]. Supernatants from the <sup>51</sup>Cr release assay were collected and transferred to Wallac plates, air dried, and read in a Wallac MicroBeta TriLux Liquid Scintillation Counter (Wallac, Turku, Finland). For restimulation experiments, single cell suspensions of spleens from LCMV<sub>ARM</sub> immune mice (n = 2) or LCMV<sub>Clone13</sub>-infected mice with (n = 5, 200 µg anti-IL-10 given on day 0, 2, & 4) or without IL-10 blockade (n = 7) were cultured for 5 days in the presence of 100 U/mL recombinant human IL-2 (R&D Systems). Media was refreshed either other day, no exogenous antigen or peptide was added. After the stimulation,  $5 \times 10^5$  cells were plated with serial dilutions of <sup>51</sup>Cr-labeled GP33 peptide-pulsed MC57 g fibroblast targets. Aliquots of stimulated cells were checked by flow cytometry in order to determine the proportion of CD8<sup>+</sup> T cells in each sample and the ratio of CD8 T cells : target cells was mathematically adjusted. Percent specific killing was calculated as [(experimental - spontaneous)/(max - spontaneous)] × 100.

### Determination of serum anti-LCMV antibody titer

LCMV-specific serum antibody levels were measured by ELISA as described [35]. Briefly, cell lysates from LCMV infected BHK-21 cells were adsorbed on to Immunosorp (Nunc) plates by overnight incubation at 4°C. Plates were blocked with 4% milk in PBS and serum samples (1:50 dilution) were added and incubated 90 minutes. Following incubation, the plates were washed extensively and the amount of bound IgG was determined by using goat anti-mouse IgG mAb conjugated to horseradish peroxidase (Vector). Bound mouse IgG was visualized by addition of colorimetric peroxidase substrate from R&D Systems.



### Statistical analyses

We used Student's t test analyses to compare the means of different groups of mice. For statistical analysis of data from the IL-10<sup>-/-</sup> mice, we used one-way ANOVA followed by Bonferroni post test.

### Authors' contributions

CHM conceived and designed the study. CHM and CPC carried out all experiments. JJ participated in the design of the study and assisted CHM in writing the manuscript.

### Acknowledgements

We thank Karin Smith for mouse colony management, Huming Hon, Guido Silvestri, Alp Oran and Joseph D. Miller for critically reading the manuscript and John Altman, Rafi Ahmed, and Matthias von Herrath for helpful advice.

### References

- Kunz S, Sevilla N, McGavern DB, Campbell KP, Oldstone MB: **Molecular analysis of the interaction of LCMV with its cellular receptor [alpha]-dystroglycan.** *J Cell Biol* 2001, **155(2)**:301-310.
- Smelt SC, Borrow P, Kunz S, Cao W, Tishon A, Lewicki H, Campbell KP, Oldstone MB: **Differences in affinity of binding of lymphocytic choriomeningitis virus strains to the cellular receptor alpha-dystroglycan correlate with viral tropism and disease kinetics.** *J Virol* 2001, **75(1)**:448-457.
- Moskophidis D, Lechner F, Pircher H, Zinkernagel RM: **Virus persistence in acutely infected immunocompetent mice by exhaustion of antiviral cytotoxic effector T cells.** *Nature* 1993, **362(6422)**:758-761.
- Ou R, Zhou S, Huang L, Moskophidis D: **Critical role for alpha/beta and gamma interferons in persistence of lymphocytic choriomeningitis virus by clonal exhaustion of cytotoxic T cells.** *J Virol* 2001, **75(18)**:8407-8423.
- Ahmed R, L. A. Morrison, and D. M. Knipe: **Persistence of viruses.** In *Fields Virology Volume 1*. 3rd edition. Edited by: Fields BN, Knipe DM, Howley P. Philadelphia, PA, Lippincott-Raven; 1996:219-249.
- Tortorella D, Gewurz BE, Furman MH, Schust DJ, Ploegh HL: **Viral subversion of the immune system.** *Annu Rev Immunol* 2000, **18**:861-926.
- Ploegh HL: **Viral strategies of immune evasion.** *Science* 1998, **280(5361)**:248-253.
- Marrack P, Kappler J: **Subversion of the immune system by pathogens.** *Cell* 1994, **76(2)**:323-332.
- Schwartz RH: **T cell anergy.** *Annu Rev Immunol* 2003, **21**:305-334.
- Zajac AJ, Blattman JN, Murali-Krishna K, Sourdive DJ, Suresh M, Altman JD, Ahmed R: **Viral immune evasion due to persistence of activated T cells without effector function.** *J Exp Med* 1998, **188(12)**:2205-2213.
- Lieberman J, Manjunath N, Shankar P: **Avoiding the kiss of death: how HIV and other chronic viruses survive.** *Curr Opin Immunol* 2002, **14(4)**:478-486.
- McMichael AJ, Callan M, Appay V, Hanke T, Ogg G, Rowland-Jones S: **The dynamics of the cellular immune response to HIV infection: implications for vaccination.** *Philos Trans R Soc Lond B Biol Sci* 2000, **355(1400)**:1007-1011.
- Jenkins MK, Mueller D, Schwartz RH, Carding S, Bottomley K, Staecker MJ, Urdahl KB, Norton SD: **Induction and maintenance of energy in mature T cells.** *Adv Exp Med Biol* 1991, **292**:167-176.
- Akbari O, DeKruyff RH, Umetsu DT: **Pulmonary dendritic cells producing IL-10 mediate tolerance induced by respiratory exposure to antigen.** *Nat Immunol* 2001, **2(8)**:725-731.
- Moore KW, de Waal Malefyt R, Coffman RL, O'Garra A: **Interleukin-10 and the interleukin-10 receptor.** *Annu Rev Immunol* 2001, **19**:683-765.
- Mencacci A, Cenci E, Bistoni F, Bacci A, Del Sero G, Montagnoli C, Fe d'Ostiani C, Romani L: **Specific and non-specific immunity to *Candida albicans*: a lesson from genetically modified animals.** *Res Immunol* 1998, **149(4-5)**:352-61; discussion 517-9.
- Barbosa de Oliveira LC, Curotto de Lafaille MA, Collet de Araujo Lima GM, de Almeida Abrahamsen I: **Antigen-specific IL-4- and IL-10-secreting CD4+ lymphocytes increase in vivo susceptibility to *Trypanosoma cruzi* infection.** *Cell Immunol* 1996, **170(1)**:41-53.
- Bellkaid Y, Piccirillo CA, Mendez S, Shevach EM, Sacks DL: **CD4+CD25+ regulatory T cells control *Leishmania major* persistence and immunity.** *Nature* 2002, **420(6915)**:502-507.
- Yap GS, Sher A: **Cell-mediated immunity to *Toxoplasma gondii*: initiation, regulation and effector function.** *Immunobiology* 1999, **201(2)**:240-247.
- Kotenko SV, Sacconi S, Izotova LS, Mirochnitchenko OV, Pestka S: **Human cytomegalovirus harbors its own unique IL-10 homolog (cmvIL-10).** *Proc Natl Acad Sci U S A* 2000, **97(4)**:1695-1700.
- Liu Y, de Waal Malefyt R, Briere F, Parham C, Bridon JM, Banchereau J, Moore KW, Xu J: **The EBV IL-10 homologue is a selective agonist with impaired binding to the IL-10 receptor.** *J Immunol* 1997, **158(2)**:604-613.
- Suzuki T, Tahara H, Narula S, Moore KW, Robbins PD, Lotze MT: **Viral interleukin 10 (IL-10), the human herpes virus 4 cellular IL-10 homolog, induces local energy to allogeneic and syngeneic tumors.** *J Exp Med* 1995, **182(2)**:477-486.
- Ejrnaes M, Filippi CM, Martinic MM, Ling EM, Toghiani LM, Crotty S, von Herrath MG: **Resolution of a chronic viral infection after interleukin-10 receptor blockade.** *J Exp Med* 2006, **203(11)**:2461-2472.
- Brooks DG, Trifilo MJ, Edelman KH, Teyton L, McGavern DB, Oldstone MB: **Interleukin-10 determines viral clearance or persistence in vivo.** *Nat Med* 2006, **12(11)**:1301-1309.
- Garba ML, Pilcher CD, Bingham AL, Eron J, Frelinger JA: **HIV Antigens Can Induce TGF- $\beta$ -Producing Immunoregulatory CD8+ T Cells.** *J Immunol* 2002, **168(5)**:2247-2254.
- Ostrowski MA, Gu JX, Kovacs C, Freedman J, Luscher MA, MacDonald KS: **Quantitative and qualitative assessment of human immunodeficiency virus type 1 (HIV-1)-specific CD4+ T cell immunity to gag in HIV-1-infected individuals with differential disease progression: reciprocal interferon-gamma and interleukin-10 responses.** *J Infect Dis* 2001, **184(10)**:1268-1278.
- Matloubian M, Conception RJ, Ahmed R: **CD4+ T cells are required to sustain CD8+ cytotoxic T-cell responses during chronic viral infection.** *J Virol* 1994, **68(12)**:8056-8063.
- Zajac AJ, Blattman JN, Murali-Krishna K, Sourdive DJ, Suresh M, Altman JD, Ahmed R: **Viral immune evasion due to persistence of activated T cells without effector function [see comments].** *J Exp Med* 1998, **188(12)**:2205-2213.
- Zajac AJ, Murali-Krishna K, Blattman JN, Ahmed R: **Therapeutic vaccination against chronic viral infection: the importance of cooperation between CD4+ and CD8+ T cells.** *Curr Opin Immunol* 1998, **10(4)**:444-449.
- Blattman JN, Grayson JM, Wherry EJ, Kaech SM, Smith KA, Ahmed R: **Therapeutic use of IL-2 to enhance antiviral T-cell responses in vivo.** *Nat Med* 2003, **9(5)**:540-547.
- Barber DL, Wherry EJ, Masopust D, Zhu B, Allison JP, Sharpe AH, Freeman GJ, Ahmed R: **Restoring function in exhausted CD8 T cells during chronic viral infection.** *Nature* 2006, **439(7077)**:682-687.
- Matloubian M, Kolhekar SR, Somasundaram T, Ahmed R: **Molecular determinants of macrophage tropism and viral persistence: importance of single amino acid changes in the polymerase and glycoprotein of lymphocytic choriomeningitis virus.** *J Virol* 1993, **67(12)**:7340-7349.
- Maris CH, Miller JD, Altman JD, Jacob J: **A transgenic mouse model genetically tags all activated CD8 T cells.** *J Immunol* 2003, **171(5)**:2393-2401.
- Murali-Krishna K, Altman JD, Suresh M, Sourdive DJ, Zajac AJ, Miller JD, Slansky J, Ahmed R: **Counting antigen-specific CD8 T cells: a reevaluation of bystander activation during viral infection.** *Immunity* 1998, **8(2)**:177-187.
- Ahmed R, Salmi A, Butler LD, Chiller JM, Oldstone MB: **Selection of genetic variants of lymphocytic choriomeningitis virus in spleens of persistently infected mice. Role in suppression of cytotoxic T lymphocyte response and viral persistence.** *J Exp Med* 1984, **160(2)**:521-540.