

BRIEF COMMUNICATION OPEN



Monthly certifications of vision impairment in England and Wales in 2020 and 2021: comparison with years prior to the COVID-19 pandemic

Omar A. Mahroo^{1,2,3}✉, Wen Xing¹, Snezana Lazarevic¹, Antra Zekite¹ and Declan Flanagan¹

© The Author(s) 2022

Eye; <https://doi.org/10.1038/s41433-022-02300-2>

The effect of the pandemic on non-COVID-19-related conditions is a subject of continued investigation [1, 2]. Support services for patients with sight loss have also been affected [3]. Individuals meeting specific criteria are eligible for a Certificate of Visual Impairment (CVI) [4]; certification can facilitate access to support which can substantially and positively impact quality of life. Where patients (parents or guardians in case of children) have given consent, a copy of the certificate is sent to the Royal College of Ophthalmologists Certifications Office based at Moorfields Eye Hospital.

We explored monthly certifications received by the office (for England and Wales) over the 5-year period from Jan 2017 to Dec 2021. Figure 1A plots monthly certifications against calendar month. Monthly certifications were consistently >1800 in the years 2017–2019, but in 2020, certifications fell dramatically in April, May and June (607, 509 and 539 certifications respectively; these represented <30% of the average for the same calendar months in 2017–2019). Monthly certifications were <1800 also in July and August of 2020 (1231 and 1267 certifications respectively) and in January and February of 2021 (1580 and 1579 respectively).

We then sought to explore trends by sex, age and ethnicity. These data were available for certifications grouped by year (1 April to 31 March of the following year) from 2016–17 to 2020–21. Figure 1B shows total certifications by year. April 2020 (the first month in which certifications dramatically fell) was the first month of the 2020–21 year, and so this year was compared to the 4 previous years. Figure 1C illustrates these comparisons: the sex

distribution was unchanged; those aged ≥80 accounted for a higher proportion of CVIs in 2020–2021 ($p < 0.0001$), whilst children and working age adults accounted for lower proportions, compared with pre-pandemic years ($p < 0.0001$). Whilst the overall ethnicity distribution appeared similar, the white proportion was higher in 2020–2021 ($p = 0.03$), whilst Asian and “Other” proportions were lower, compared with the preceding 4 years ($p = 0.01$ and $p = 0.006$ respectively).

In conclusion, we observed a marked (>70%) reduction in certification forms received in April, May and June of 2020, coinciding with the first national lockdown. As certifications can enable access to support, this is another manifestation of the consequences of the pandemic for patients with vision loss. A similar magnitude reduction was not observed for subsequent lockdowns. A study in Northern Ireland also found a reduction in certifications in March to June 2020 compared with the same period in 2019 [5]. In our further exploration, we did not find a disproportionate impact by sex. There was no evidence of a disproportionate barrier to certification affecting the elderly (those over 80 in fact made up a larger fraction of certifications compared with pre-pandemic years). There were falls observed in the fraction of certifications comprising those of Asian or “Other” ethnicity; this might represent differential barriers to access, but other factors could contribute. Limitations of this study include certifications where demographic data were unknown: for age and sex, these constituted less than 1% of certifications, whereas ethnicity was unknown in 13.5%.

¹NIHR Biomedical Research Centre at Moorfields Eye Hospital and the UCL Institute of Ophthalmology, London, UK. ²Institute of Ophthalmology, University College London, Bath Street, London, UK. ³Section of Ophthalmology, King's College London, St Thomas' Hospital Campus, London, UK. ✉email: o.mahroo@ucl.ac.uk

Received: 18 February 2022 Revised: 3 October 2022 Accepted: 18 October 2022

Published online: 05 November 2022

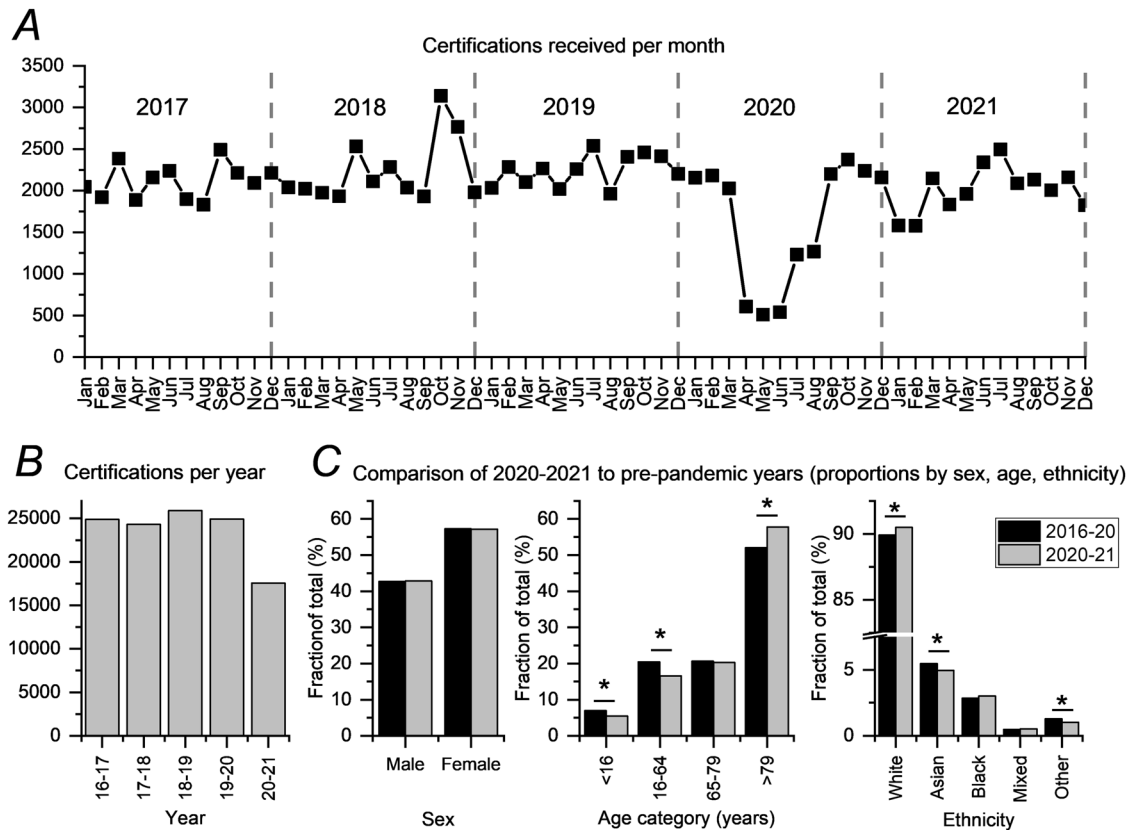


Fig. 1 Certifications of visual impairment in England and Wales before and during the COVID-19 pandemic. **A** Numbers of certifications received each month by the Certifications Office between January 2017 and Dec 2021. **B** Annual numbers of certifications between 2016–2017 and 2020–2021 (here, each year starts from 1 April). **C** Proportions of certifications (by sex, age group and ethnicity) for 2020–2021 compared with the preceding 4 years. In each case, the fraction is of the total after excluding certifications for which the relevant demographic data are unknown. For age and sex, these were unknown in <1% of certifications. Ethnicity was unknown in 13.5% of certifications. *Denotes nominal significance at $p < 0.05$. For the upper panel (**A**), dates refer to date of receipt by the Certifications Office. For the lower panels (**B**, **C**), dates relate to recorded date of certification.

DATA AVAILABILITY

Data relating to certification of visual impairment are publicly available at <https://fingertips.phe.org.uk/profile/public-health-outcomes-framework>. The data processed for the analysis in this manuscript are available on request.

REFERENCES

- Nguyen JL, Benigno M, Malhotra D, Khan F, Angulo FJ, Hammond J, et al. Pandemic-related declines in hospitalization for non-COVID-19-related illness in the United States from January through July 2020. *PLoS ONE*. 2022;17:e0262347 <https://doi.org/10.1371/journal.pone.0262347>.
- Liu S, Ng JKY, Moon EH, Morgan D, Woodhouse N, Agrawal D, et al. Impact of COVID-19-associated anxiety on the adherence to intravitreal injection in patients with macular diseases a year after the initial outbreak. *Ther Adv Ophthalmol*. 2022;14:25158414211070881 <https://doi.org/10.1177/25158414211070881>.
- Menon V, Treen T, Burdon MA, Batra R. Impact of the eye clinic liaison officer at an NHS foundation trust: a retrospective study. *BMJ Open Ophthalmol*. 2020;5:e000587 <https://doi.org/10.1136/bmjophth-2020-000587>.
- Rahman F, Zekite A, Bunce C, Jayaram H, Flanagan D. Recent trends in vision impairment certifications in England and Wales. *Eye*. 2020;34:1271–8. <https://doi.org/10.1038/s41433-020-0864-6>.
- Jackson J, Silvestri G, Stevenson M, Sinton J, Witherow J, McCann R, et al. COVID-19: the regional impact of COVID-19 on the certification of vision impairment in Northern Ireland. *Ophthalmic Physiol Opt*. 2021;41:136–43. <https://doi.org/10.1111/opo.12757>.

ACKNOWLEDGEMENTS

The data provided by Moorfields Eye Hospital, captured by the CVI and CVIW are the copyright of the Department of Health and Social Care and the Welsh Government respectively, and this work was made possible through a collaboration with the Royal

College of Ophthalmologists. The views expressed in this work are those of the authors and not necessarily those of any funding body or the Department of Health and Social Care or Welsh Government.

AUTHOR CONTRIBUTIONS

Study design and conception: OAM, DF. Data collection, analysis and interpretation: all authors. Drafting manuscript: OAM. Revision: all authors. Approval of final version: all authors.

FUNDING

OAM funded by the Wellcome Trust (206619_Z_17_Z). The authors acknowledge support from the NIHR Biomedical Research Centre at Moorfields Eye Hospital and the UCL Institute of Ophthalmology.

COMPETING INTERESTS

The authors declare no competing interests.

ADDITIONAL INFORMATION

Correspondence and requests for materials should be addressed to Omar A. Mahroo.

Reprints and permission information is available at <http://www.nature.com/reprints>

Publisher's note Springer Nature remains neutral with regard to jurisdictional claims in published maps and institutional affiliations.



Open Access This article is licensed under a Creative Commons Attribution 4.0 International License, which permits use, sharing, adaptation, distribution and reproduction in any medium or format, as long as you give appropriate credit to the original author(s) and the source, provide a link to the Creative Commons license, and indicate if changes were made. The images or other third party material in this article are included in the article's Creative Commons license, unless indicated otherwise in a credit line to the material. If material is not included in the article's Creative Commons license and your intended use is not permitted by statutory regulation or exceeds the permitted use, you will need to obtain permission directly from the copyright holder. To view a copy of this license, visit <http://creativecommons.org/licenses/by/4.0/>.

© The Author(s) 2022