

Support for the Dominance Theory in *Drosophila* Transcriptomes

Ana Llopart,^{*,†,1} Evgeny Brud,^{*,2} Nikale Pettie,^{*,†} and Josep M. Comeron^{*,†}

^{*}Interdisciplinary Graduate Program in Genetics and [†]Department of Biology, University of Iowa, Iowa 52242

ABSTRACT Interactions among divergent elements of transcriptional networks from different species can lead to misexpression in hybrids through regulatory incompatibilities, some with the potential to generate sterility. While the possible contribution of faster-male evolution to this misexpression has been explored, the role of the hemizygous X chromosome (*i.e.*, the dominance theory for transcriptomes) remains yet to be determined. Here, we study genome-wide patterns of gene expression in females and males of *Drosophila yakuba*, *Drosophila santomea* and their hybrids. We used attached-X stocks to specifically test the dominance theory, and we uncovered a significant contribution of recessive alleles on the X chromosome to hybrid misexpression. Our analyses also suggest a contribution of weakly deleterious regulatory mutations to gene expression divergence in genes with sex-biased expression, but only in the sex toward which the expression is biased (*e.g.*, genes with female-biased expression when analyzed in females). In the opposite sex, we found stronger selective constraints on gene expression divergence. Although genes with a high degree of male-biased expression show a clear signal of faster-X evolution of gene expression, we also detected slower-X evolution in other gene classes (*e.g.*, female-biased genes). This slower-X effect is mediated by significant decreases in *cis*- and *trans*-regulatory divergence. The distinct behavior of X-linked genes with a high degree of male-biased expression is consistent with these genes experiencing a higher incidence of positively selected regulatory mutations than their autosomal counterparts.

KEYWORDS speciation; sexually dimorphic gene expression; faster-X evolution; faster-Autosome evolution; X chromosome

POPULATION genetics models predict that, under certain conditions, X-linked loci will show accelerated divergence relative to autosomal loci (*i.e.*, faster-X evolution) (Charlesworth *et al.* 1987; Orr and Betancourt 2001; Betancourt *et al.* 2002; Vicoso and Charlesworth 2006, 2009a; Mank *et al.* 2010b). Faster-X evolution can, in principle, result from the contributions of either beneficial or weakly deleterious mutations to the rates of evolution. On the one hand, the fitness effects of new X-linked recessive beneficial mutations are fully exposed in hemizygous males, which significantly increases their chances of spreading and contributing to the rate of evolution. On the other, weakly deleterious mutations that are partially dominant can also

produce faster-X because the efficacy of purifying selection can be slightly reduced on the X chromosome. This is because the effective population size of the X chromosome (N_{eX}) is often reduced relative to that of autosomes (N_{eA}) due to its hemizygoty in males. Theoretical models also show that the chances of observing faster-X evolution are very sensitive to the ratio N_{eX}/N_{eA} (Vicoso and Charlesworth 2009a; Mank *et al.* 2010b) and any parameter that impacts this ratio, including demographic changes and differences in recombination rates between the X chromosome and autosomes (Langley *et al.* 1988; Connallon 2007; Pool and Nielsen 2007; Vicoso and Charlesworth 2009b; Charlesworth 2012; Comeron *et al.* 2012; Ávila *et al.* 2015). For certain N_{eX}/N_{eA} values, faster-X evolution can even occur independently of the coefficient of dominance. For instance, beneficial mutations will generate faster-X evolution for any coefficient of dominance when $N_{eX}/N_{eA} \geq 1$; equivalently, weakly deleterious mutations will produce faster-X when $N_{eX}/N_{eA} \leq 0.65$ (Vicoso and Charlesworth 2009a; Mank *et al.* 2010b).

Today, there is ample evidence supporting faster-X evolution of protein-coding sequences in a variety of organisms,

Copyright © 2018 Llopart *et al.*

doi: <https://doi.org/10.1534/genetics.118.301229>

Manuscript received June 4, 2018; accepted for publication August 10, 2018; published Early Online August 21, 2018.

Available freely online through the author-supported open access option.

¹Corresponding author: Department of Biology, 469 Biology Bldg. (BB), University of Iowa, IA 52242. E-mail: ana-llopart@uiowa.edu

²Present address: Department of Ecology and Evolution, Stony Brook University, NY 11794.

including XY and ZW systems (Thornton and Long 2002, 2005; Torgerson and Singh 2003, 2006; Counterman *et al.* 2004; Khaitovich *et al.* 2005; Lu and Wu 2005; Nielsen *et al.* 2005; Musters *et al.* 2006; Baines and Harr 2007; Begun *et al.* 2007; Mank *et al.* 2007, 2010a; Baines *et al.* 2008; Singh *et al.* 2008; Ellegren 2009; Grath and Parsch 2012; Meisel and Connallon 2013; Vicoso *et al.* 2013; Ávila *et al.* 2014, 2015; Garrigan *et al.* 2014; Kousathanas *et al.* 2014; Sackton *et al.* 2014; Veeramah *et al.* 2014; Coolon *et al.* 2015; Llopart 2015; Larson *et al.* 2016). Faster-X evolution has also been reported for gene expression divergence (Khaitovich *et al.* 2005; Brawand *et al.* 2011; Kayserili *et al.* 2012; Llopart 2012; Meisel *et al.* 2012; Coolon *et al.* 2015; Dean *et al.* 2015) and intergenic DNA sequences (Hu *et al.* 2013; Coolon *et al.* 2015; Llopart 2018), likely reflecting the effects of natural selection on the evolution of regulatory elements. In species where males are the heterogametic sex, faster-X is expected to be strongest in genes with male-specific fitness effects because these genes are always hemizygous when they are X-linked. A similar rationale applies to genes with female-specific fitness effects in ZW systems (Betancourt *et al.* 2002; Vicoso and Charlesworth 2009a; Mank *et al.* 2010b).

Regardless of the evolutionary forces driving faster-X (Z) evolution (positive selection or relaxed negative selection), its implications for the genetic basis of hybrid dysfunction are clear: the X chromosome will disproportionately contribute to between-species Dobzhansky-Muller incompatibilities (Dobzhansky 1937; Muller 1942; Coyne and Orr 1989). Even a slightly elevated substitution rate on the X chromosome will be amplified in hybrids, as the number of incompatibilities increases exponentially with divergence time (Orr 1995; Turelli and Orr 2000; Matute *et al.* 2010; Moyle and Nakazato 2010; Guerrero *et al.* 2017). Mapping studies in a variety of species including mice, Lepidoptera, and *Drosophila* have shown that the factors having the largest effects on hybrid dysfunction, particularly hybrid male sterility, are X-linked (Coyne and Orr 1989, 2004; Coyne *et al.* 1991; Coyne 1992). Orr's (1987) seminal study of the genetic basis of sterility in *Drosophila pseudoobscura*–*Drosophila persimilis* hybrids constitutes a classic example of this pattern known as the large X-effect. The large X-effect, together with Haldane's rule (*i.e.*, the preferential inviability or sterility of the heterogametic over the homogametic sex; Haldane 1922), underline the importance of sex chromosomes in speciation (Coyne and Orr 1989; Masly and Presgraves 2007, 2008; Moyle *et al.* 2010; Johnson and Lachance 2012).

The large X-effect can also be explained by the dominance theory (Turelli and Orr 1995, 2000; Orr and Turelli 1996), which posits that alleles causing hybrid dysfunction tend to act recessively in hybrids (Muller 1940, 1942). As a result, hemizygous X chromosomes will express all incompatibilities (dominant and recessive) while heterozygous autosomes will express only the fairly dominant ones. In the context of gene regulation, the dominance theory, if confirmed, opens the

possibility that a large fraction of the abundant misexpression observed in hybrid males, but not in hybrid females, may be due to regulatory incompatibilities involving X-linked recessive mutations. Disruption of gene expression in hybrids has been extensively documented in *Drosophila*, and it is often the case that rapidly evolving genes tend to be over-represented among misexpressed genes (Reiland and Noor 2002; Michalak and Noor 2003, 2004; Ranz *et al.* 2004; Landry *et al.* 2005; Noor 2005; Haerty and Singh 2006; Artieri *et al.* 2007; Barbash and Lorigan 2007; Moehring *et al.* 2007; Catron and Noor 2008; Sundararajan and Civetta 2011; Llopart 2012; Maheshwari and Barbash 2012; Satyaki *et al.* 2014; Wei *et al.* 2014; Gomes and Civetta 2015). While the potential link between faster-male evolution (Wu and Davis 1993; Wu *et al.* 1996) and hybrid misexpression has been explored (Noor 2005; Haerty and Singh 2006; Ortíz-Barrientos *et al.* 2007; Civetta 2016; Mack and Nachman 2017), the dominance theory for hybrid transcriptomes remains untested.

Here, we examine genome-wide patterns of transcript abundance for 11,949 genes with variable degrees of sex-biased expression in females and males of *Drosophila yakuba*, *Drosophila santomea* and their interspecific hybrids using RNAseq technology. Our experimental design includes females with standard karyotypes and females carrying attached-X chromosomes, which allowed us to test the dominance theory for transcriptomes. The comparative analysis of female and male transcriptomes reveals consistent differences in gene expression divergence between the two sexes for genes with sex-biased expression, in agreement with different selective regimes. Genes with a high degree of male-biased expression show a strong and significant signal of faster-X evolution of gene expression in a slower-X evolution background. We also detect that recessive alleles on the X chromosome play a significant role in hybrid misexpression, hence confirming predictions of the dominance theory.

Materials and Methods

Fly stocks

We used the *D. yakuba* Tai18E2 and the *D. santomea* STO.4 stocks to obtain an overall view of gene expression variation between species and in F₁ hybrid females and males. The *D. yakuba* Tai18E2 was part of the 12 *Drosophila* Genomes project, originated in the Tai rainforest (Tai National Park, Ivory Coast), and was inbred for at least 10 generations of single-pair brother/sister mating before whole-genome sequencing (*Drosophila* 12 Genomes Consortium *et al.* 2007). The STO.4 stock of *D. santomea* was established from a single fertilized female collected in the Obo Natural Reserve on São Tomé (Lachaise *et al.* 2000), and was inbred for 10 generations. To generate “unbalanced” F₁ hybrid females with two *D. yakuba* X chromosomes, *D. yakuba* females of the attached-X stock [C(1)RM_y, *w^{or}* females, + males] were crossed to *D. santomea*

males of the attached-X stock [C(1)RM g females, + males] (Coyne *et al.* 2004); F₁ hybrid females with two *D. santomea* X chromosomes were also generated from the reciprocal cross. Attached-X hybrid females carry two X chromosomes from the same (maternal) species, a haploid set of autosomes from each parental species, and a Y chromosome from the paternal species. Figure 1 shows the specific karyotypes analyzed in this study. All flies were raised on standard cornmeal-yeast-agar medium at 24° with a 12 hr dark-light cycle.

RNA isolation, library preparation, and sequencing

Females and males were collected under CO₂ anesthesia 0–5 hr post eclosion, aged for 19 hr at 24°, snap-frozen in liquid nitrogen, and stored at –80°. For each genotype analyzed, total RNA was isolated from a pool of 15 females or 30 males using TRIzol reagent (Invitrogen) and following the manufacturer’s recommendations. Up to 15 µg of nucleic acid were treated with RNase-free DNase I (~7 Kunitz units) in solution (“RNase-free DNase set”; Qiagen) and cleaned-up using the RNeasy Mini Kit (Qiagen). We used ~1 µg of total RNA to prepare libraries suitable for high throughput sequencing following the Illumina protocol (“mRNA Sample Preparation Guide”; Cat. # RS-930-1001, Part # 1004898 Rev. D; Illumina). Briefly, poly-A containing RNA molecules were purified using poly-T oligo-attached magnetic beads. Following this purification, the mRNA was fragmented into small pieces using divalent cations under elevated temperature. The first-strand cDNA was copied using reverse transcriptase and random hexamers while the second cDNA strand was synthesized using DNA polymerase I and RNase H. The fragmented cDNA went through the end repair process, addition of a single “A” base, and ligation to custom-designed adapters. These include unique seven-nucleotide tags that allowed multiplexing of several samples prior to sequencing. The sequences and a detailed description of these custom-designed adapters can be found elsewhere (Comeron *et al.* 2012).

We ran the ligation products on a 2% agarose gel, selected for ~250 bp size, and recovered cDNA templates using the QIAquick Gel Extraction Kit (Qiagen). These cDNA templates were enriched with PCR to create the final cDNA libraries, which were validated using a 2100 Bioanalyzer (Agilent Technologies). For each genotype analyzed, we obtained two replicates using the same total RNA. Cluster generation and sequencing were carried out on HiSeq 2000/2500 instruments at the Iowa Institute of Human Genetics (IIHG; University of Iowa) or at the Iowa State DNA facility (Iowa State University) using a combination of multiple lanes per sample (single-end 100 cycles/read or 125 cycles/read). Sequence reads were sorted out according to individual tags, 3’ trimmed (-t 12 -l 30) and filtered based on quality (-q 12 and -p 75) using the FASTX-toolkit (0.0.14) (http://hannonlab.cshl.edu/fastx_toolkit/commandline.html). The average number of trimmed reads that passed quality filtering across samples was 51.5 million and 31.3 million for replicates 1 and 2, respectively. Supplemental Material, Table S1

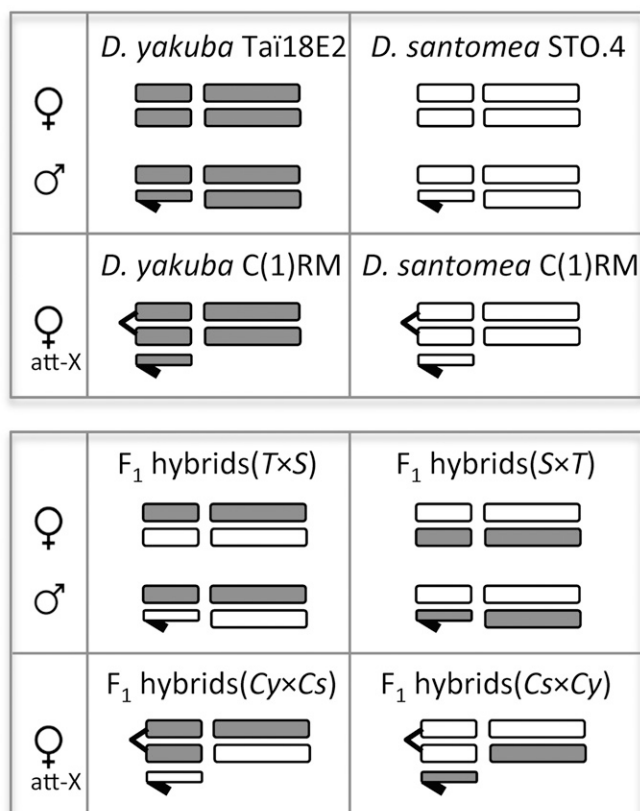


Figure 1 Diagram of the karyotypes analyzed in this study. Horizontal short bars represent sex chromosomes (the Y chromosome is shown with a hook) while long bars represent autosomes. Gray, *D. yakuba* chromosomes; white, *D. santomea* chromosomes. Att-X, attached-X females; $T \times S$, hybrids of first generation from the cross between *D. yakuba* Tai18E2 females and *D. santomea* STO.4 males; $S \times T$, hybrids of first generation from the cross between *D. santomea* STO.4 females and *D. yakuba* Tai18E2 males; $C_y \times C_s$, hybrids of first generation from the cross between *D. yakuba* C(1)RM females and *D. santomea* C(1)RM males; $C_s \times C_y$, hybrids of first generation from the cross between *D. santomea* C(1)RM females and *D. yakuba* C(1)RM males. RNAseq detailed information for each of the 12 karyotypes/genotypes is shown in Table S1.

shows the number of sequence reads and the median number of mapped fragments per kilobase of transcript for each of the 12 genotypes analyzed (two replicates per genotype).

Gene expression analyses

To examine genome-wide transcript abundance, we first generated the *D. yakuba* reference gene set (14,687 genes) based on the genome sequence and annotation of coding sequences (CDS) available in FlyBase (dyak_r1.3_FB2011_08; <http://flybase.org/>) (Gramates *et al.* 2017). Genes on Arm U and random sequence scaffolds were not included. To allow reads covering 5’ and 3’ UTRs, we expanded the CDS definitions by 75 bp upstream and downstream of starting and stop codons, respectively. Exon and UTR sequences were extracted using tools available in Galaxy (<https://usegalaxy.org/>) (Afgan *et al.* 2016) and assembled with custom scripts.

Trimmed and quality filtered reads were mapped to the *D. yakuba* reference gene set with Bowtie 2 (version 2.1.0) using default parameters (Langmead and Salzberg 2012). Bam files were sorted and indexed with SAMtools [version 0.1.18 (r982:295)] (Li *et al.* 2009), and the number of reads aligned to each of the genes was calculated using RSEM (version 1.3.0) (Li and Dewey 2011). We only considered for further analyses genes with at least 10 mapped reads and > 1 FPKM (fragments per kilobase of transcript per million mapped reads) in both species and in at least one sex.

All gene expression analyses were carried out combining sequence reads from both replicates. To classify genes into different sex-biased expression categories that were consistent across species, we took advantage of a DESeq2 (version 1.16.1) multifactor design with two variables (\sim species + sex) and used the absolute effect size estimate [$\text{abs}(\text{Log}_2\text{FoldChange})$] as a measure of the degree of sex-biased expression (Love *et al.* 2014). Quantitative estimates of differences in gene expression between species, between parental species and hybrids (degree of misexpression), and between reciprocal interspecific hybrids, were also based on size factors from DESeq2. DESeq2 implements the Benjamini-Hochberg probability adjustment (padj) to correct for multiple testing (Benjamini and Hochberg 1995). Genes were considered to show statistically significant differences in expression if $\text{padj} < 0.05$ [false discovery rate (FDR) = 0.05]. We excluded genes showing switches across species between sex-biased expression categories (e.g., genes with male-biased expression in *D. yakuba* but female-biased expression in *D. santomea*). We analyzed gene expression for a total of 11,959 genes.

Analyses of cis- and trans-regulatory variation

The detection of cis- and/or trans-regulatory variation is usually based on comparing the ratio of allelic expression in hybrids (i.e., allelic ratio) with the ratio of expression between species (i.e., species ratio) (Wittkopp *et al.* 2004; McManus *et al.* 2010; Coolon *et al.* 2014). With mRNAseq data, this requires the identification of stock-specific reads based on whole-genome consensus sequences for the *D. yakuba* Tai18E2, the *D. santomea* STO.4, the *D. yakuba* C(1)RM, and the *D. santomea* C(1)RM stocks. The initial mapping steps for generating these new genome sequences were the same as those used for the analysis of transcript abundance (see above) except that, in this case, we used the *D. yakuba* reference genome sequence to align *D. yakuba* reads and a draft of the *D. santomea* genome sequence (Llopart 2015) to align *D. santomea* reads. SAMtools was used to (1) sort/index BAM files, (2) filter sites with mapping quality < 40 , and (3) generate mpileup files with a maximum depth of 100,000 reads and a minimum base alignment quality of 30 (Li *et al.* 2009). To filter out sites covered by fewer than five reads and to obtain fastq files of consensus sequences, we used the utility BCFtools (1.3.1) (Li *et al.* 2009). Fastq files for each of the four consensus sequences

were converted into fasta format and heterozygous sites were randomly phased using Heng Li's seqtk (<https://github.com/lh3/seqtk>). To minimize mapping biases across comparisons, regions containing ambiguous bases or missing base calls in at least one of the consensus sequences were masked in all the other consensus sequences.

Based on comparisons between allelic and species ratios, we classified genes into six different regulatory evolution classes (*cis* only, *trans* only, *cis* + *trans*, *cis* \times *trans*, compensatory, and conserved) following McManus *et al.* (2010). For each type of hybrid analyzed, we identified stock-specific reads as those mapping with 0 mismatches to only one of the parental consensus sequences. For a given gene, the relative numbers of the two types of stock-specific reads in hybrids provide an estimate of the allelic ratio of gene expression, which was calculated as $\log_2(\text{read count allele 1} / \text{read count allele 2})$. For example, in hybrid females of the cross between *D. yakuba* Tai18E2 females and *D. santomea* STO.4 males, allele 1 and allele 2 refer to the reads obtained from the sample of hybrid females that map specifically to the sequences of the *D. yakuba* Tai18E2 and the *D. santomea* STO.4 stocks, respectively. The allelic ratio constitutes a quantitative measure of *cis*-regulatory divergence for every gene analyzed. To obtain an estimate of the species ratio of expression, we first constructed an *in silico* parental mixture by combining equal numbers of stock-specific reads from each of the two parental stocks used to generate the different hybrid types, as in Coolon *et al.* (2014). For a given gene, the species ratio was then calculated as $\log_2(\text{read count genotype 1} / \text{read count genotype 2})$ where genotype 1 and genotype 2 refer to the stock-specific reads in the *in silico* parental mixture (Coolon *et al.* 2014, 2015). The difference between species and allelic ratios [$\log_2(\text{read count genotype 1} / \text{read count genotype 2}) - \log_2(\text{read count allele 1} / \text{read count allele 2})$] provides a quantitative measure of *trans*-regulatory divergence for each gene analyzed. Binomial exact tests were used to detect differences between read counts of allele 1 and allele 2, and also between read counts of genotype 1 and genotype 2. A χ^2 test was applied to detect differences between allelic and species ratios. Sequential Bonferroni correction for multiple testing was used (FDR = 0.05). Only genes with at least 20 stock-specific mapped reads for the two types of alleles and genotypes were included in the analyses.

Estimates of selection on gene expression variation

Selection acting on gene expression variants for genes with female-biased expression was estimated as the scaled selection coefficient γ ($2 N_e s$, where N_e is the effective population size and s the selection coefficient) for an arbitrary coefficient of dominance (h ; $0 \leq h \leq 1$). Based on predictions of the infinitely many sites model (Kimura 1964; Crow and Kimura 1970), rates of evolution and levels of divergence depend on N_e , s , h , and the mutation rate. In particular, γ can be estimated solely as a function of h conditional to knowing estimates of divergence at regions with differences in N_e if

mutation rates are assumed to be equivalent. We took advantage of the estimated difference in N_e between the dot chromosome and other autosomes based on *D. yakuba* intron polymorphism data (Llopart 2018), with the N_e of the dot chromosome being 11.1% that of the other autosomes.

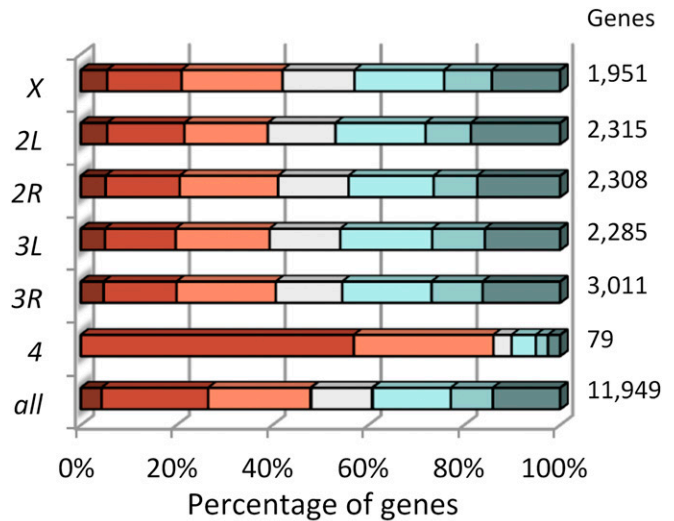
Data availability

The authors state that all data necessary for confirming the conclusions presented in the manuscript are represented fully within the manuscript. All sequence reads have been archived at NCBI SRA BioProject PRJNA470895. Supplemental material available at Figshare: <https://doi.org/10.25386/genetics.6981560>.

Results

To understand the role of the X chromosome in hybrid gene expression, we examined transcript abundance in 1-day old virgin females and males of *Drosophila yakuba*, *D. santomea* and their interspecific hybrids. Our experimental design includes not only flies with standard karyotypes but also females bearing attached-X chromosomes (Coyne *et al.* 2004) (Figure 1). Attached-X hybrid females show the same degree of autosome-sex chromosome mismatch as that of hybrid males, and constitute an ideal genetic tool to study the effects of X-linked recessive factors. We obtained profiles of transcript abundance for 10,128 and 11,663 genes expressed in adult females and males, respectively. To investigate the effects of sexually dimorphic gene expression, we classified all genes into seven distinct categories based on degree of sex-biased expression (Figure 2 and Table S2). Importantly, this gradual classification allows for comparisons across studies regardless of statistical power. Additionally, to capture extreme sex-biased effects, we also identified female- and male-specific genes (FSGs and MSGs). FSGs (or MSGs) are defined as those showing < 1 FPKM in males (or females) and statistically significant differences in expression between the two sexes that are consistent across the two species. They are a subset of the most extreme sex-biased category (fold change between sexes > 3). Genes showing an expression fold change between the two sexes < 1.1 were considered nonsex-biased.

To investigate the relationship between sexually dimorphic expression and chromosome location in the *D. yakuba*–*D. santomea* system, we examined the genome-wide distribution of genes with variable degrees of sex-biased expression (Figure 2). The autosomal dot (fourth) chromosome reveals the most striking pattern, with 86% (68/79) of its genes being female-biased in expression. This represents a significant enrichment relative to the other autosomes [68/79 vs. 3978/9919; Fisher’s exact test (FET), $P = 5.08 \times 10^{-17}$], which we interpret as evidence of ancient feminization of the dot chromosome (Vicoso and Bachtrog 2013, 2015). The X chromosome shows a significant overrepresentation of FSGs relative to autosomes (40/1951 vs. 116/9919; FET $P = 0.003$) and a trend toward underrepresentation of MSGs (246/1951 vs. 1413/9919; FET $P = 0.058$).



Female/male: > 3 (dark red) 3 to 1.5 (red) 1.5 to 1.1 (orange) 1.1 to 1 (light orange)
 Male/female: > 3 (dark teal) 3 to 1.5 (teal) 1.5 to 1.1 (light teal) 1.1 to 1 (lightest teal)

Figure 2 Distribution of genes with different degrees of sex-biased expression across the genome. The number of genes in each class is shown on the right column. See Table S2 for the number of genes in each category.

Gene expression divergence is a sexually dimorphic trait

To understand the molecular causes underlying hybrid misexpression, we first examined gene expression divergence (absolute \log_2 fold change of transcript abundance between species; see Methods). These analyses uncovered three main patterns. First, gene expression divergence is positively correlated with degree of sex-biased expression {Spearman’s $\rho = 0.10$ [95% confidence intervals (CI): 0.07–0.13] ($P = 1.04 \times 10^{-11}$) for genes with increasingly female-biased expression in females and $\rho = 0.30$ (95% CI: 0.27–0.32) ($P = 3.47 \times 10^{-111}$) for genes with increasingly male-biased expression in males} (Figure 3). Second, female transcriptomes show smaller gene expression divergence relative to male transcriptomes [0.28 vs. 0.30; Mann-Whitney Test (MWT) $P = 6.75 \times 10^{-12}$ for all genes; 0.26 vs. 0.28; MWT $P = 1.89 \times 10^{-4}$ for X-linked genes; 0.28 vs. 0.31; MWT $P = 1.19 \times 10^{-10}$ for autosomal genes], which is consistent with faster-male evolution (Wu and Davis 1993; Wu *et al.* 1996) for gene expression (Meiklejohn *et al.* 2003; Parisi *et al.* 2003; Ranz *et al.* 2003; Haerty *et al.* 2007). Gene expression also evolves more rapidly in MSGs than in FSGs (0.58 vs. 0.41; MWT $P = 0.007$). Third, the comparative analysis of the *same* subset of genes in the female and male transcriptomes reveals that genes with sex-biased expression show high gene expression divergence in the sex toward which the expression is biased while transcript abundance tends to be conserved between species in the opposite sex; the trend is consistently observed across genes with different degrees of either female- or male-biased expression (Figure 3).

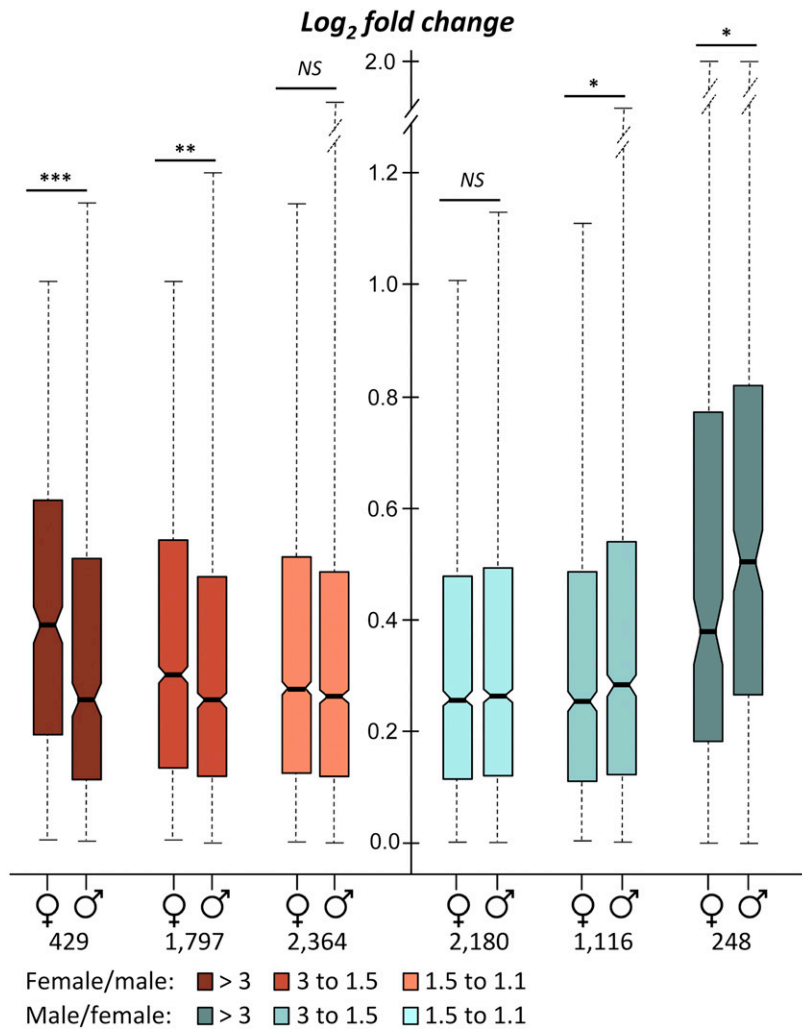


Figure 3 Gene expression divergence as a sexually dimorphic trait in the female and male transcriptomes. The horizontal line inside each box indicates the median. The length of the box and the whiskers represent 50% and 90% CI, respectively. The numbers of genes analyzed in each sex-biased category are shown under the female and male symbols. Note that only genes expressed in both sexes were included in the analysis. Probabilities are based on Mann-Whitney tests, where *NS* indicates not significant, * $P < 0.05$, ** $P < 0.001$, *** $P < 1 \times 10^{-4}$. Gene expression divergence data are based on the comparison of *D. yakuba* Tai18E2 and *D. santomea* STO.4 stocks.

As a result, some gene categories can show greater gene expression divergence in females than in males. This suggests that, in addition to the pervasive trend of faster-male evolution, there is a signal for rapid evolution in the female transcriptome as well. We suggest that gene expression divergence for genes with sex-biased expression should be studied in the context of a sexually dimorphic trait (see “Discussion”).

Weakly deleterious regulatory mutations contribute to gene expression divergence

To gain insight into the evolutionary forces driving gene expression divergence, we analyzed transcript abundance on the dot chromosome. Because of the highly biased gene composition of this chromosome, we focused on genes with female-biased expression. In *Drosophila*, the dot chromosome is a unique autosome because it does not experience meiotic recombination. As a consequence, the effective population size and the effectiveness of natural selection on the dot chromosome are severely reduced due to linked selection (Hill and Robertson 1966; Maynard Smith and Haigh 1974; Berry *et al.* 1991; Charlesworth *et al.* 1993; Hudson

and Kaplan 1995; Charlesworth 1996; Betancourt and Pregraves 2002; Comeron and Kreitman 2002; Jensen *et al.* 2002; Wang *et al.* 2002, 2004; Haddrill *et al.* 2007; Comeron *et al.* 2008; Betancourt *et al.* 2009; Arguello *et al.* 2010).

If weakly deleterious mutations are major contributors to gene expression divergence, we anticipate that gene expression on the dot chromosome will evolve faster than on other autosomes. For female-biased genes this prediction is observed in female transcriptomes (0.62 vs. 0.29; MWT $P = 9.65 \times 10^{-13}$). Based on this 2.14-fold (0.62/0.29) difference in gene expression divergence, we estimated the scaled selection coefficient γ ($2 N_{eA} s$) acting on gene expression variation to range between -2.4 ($h = 1$) and -3.9 ($h = 0$), in agreement with weak selection.

In male transcriptomes, by contrast, there is no evidence of increased gene expression divergence for female-biased genes on the dot chromosome (0.21 vs. 0.27; MWT $P = 0.06$), which indicates minimal effects of differences in effective population size and thus suggests selectively strong functional constraints. The presence of only eight genes with

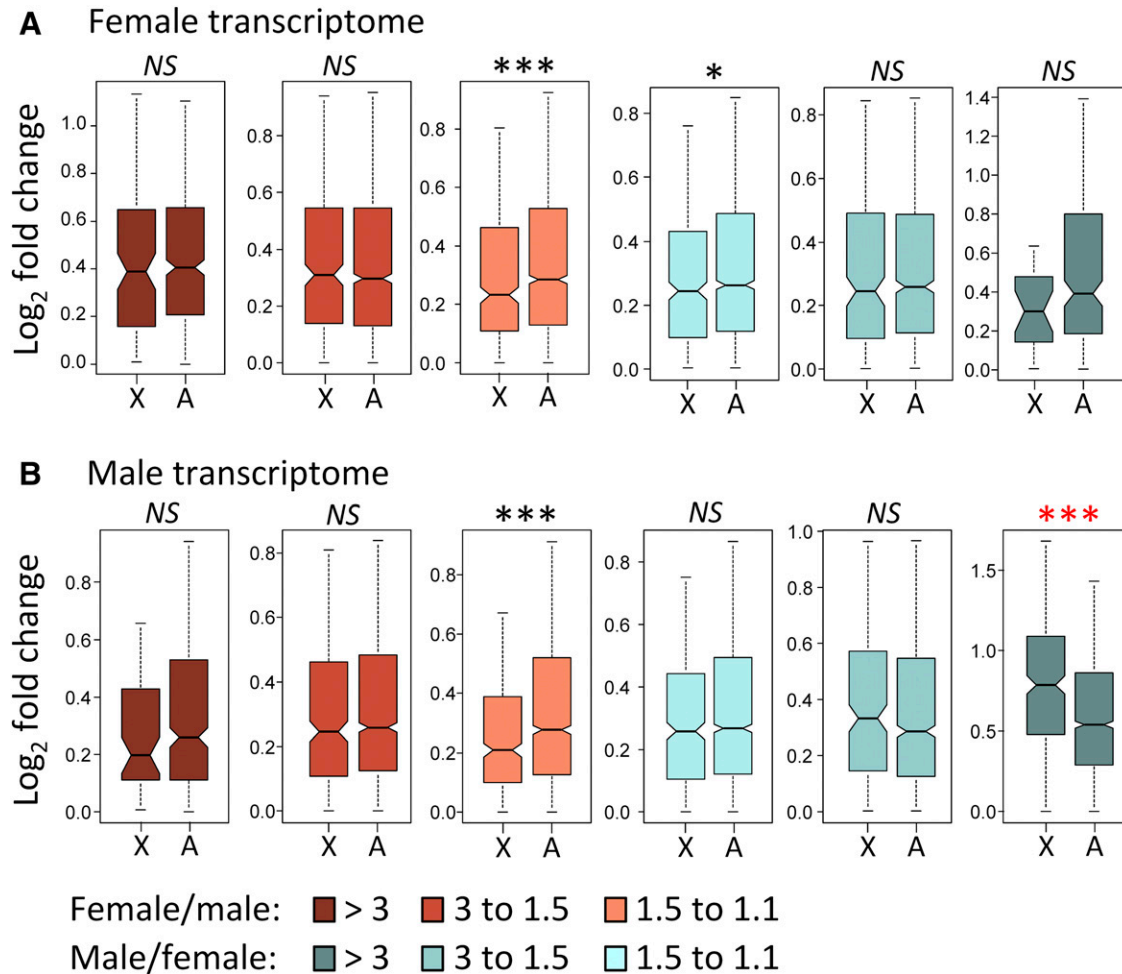


Figure 4 Tests of faster-X evolution for gene expression divergence in the female transcriptome (A) and the male transcriptome (B). Gene expression divergence data are based on the comparison of *D. yakuba* Tai18E2 and *D. santomea* STO.4 stocks. X, X chromosome; A, Autosomes. Probabilities are based on Mann-Whitney tests, where NS indicates not significant, * $P < 0.05$, ** $P < 0.001$, *** $P < 1 \times 10^{-4}$. Black and red asterisks indicate slower-X and faster-X, respectively (see Figure 3 legend for boxplot explanation).

male-biased expression on the dot chromosome precludes us from formally testing whether genes with male-biased expression, when expressed in males, show any evidence of weak selection. Overall, the comparison of female and male transcriptomes reveals that variation in gene expression is heavily influenced by weakly deleterious mutations but only in the sex toward which the expression is biased.

Faster-X evolution for gene expression divergence in highly male-biased genes

We also examined gene expression divergence in the context of the comparison between X-linked and autosomal genes. The female transcriptome shows an overall signal in support of slower-X evolution of gene expression (0.25 vs. 0.28; MWT $P = 4.81 \times 10^{-5}$), although for some gene categories the signal is weak or not significant (Figure 4A). The male transcriptome also shows slower-X evolution for gene expression divergence when all genes are considered as a single class (0.28 vs. 0.31; MWT $P = 0.002$). Despite this overall trend, we found significant evidence for faster-X evolution of gene

expression in genes with a high degree of male-biased expression (Figure 4B). Faster-X is particularly pronounced in MSGs (0.81 vs. 0.54; MWT $P = 4.13 \times 10^{-13}$). X-linked MSGs show the greatest gene expression divergence of all gene classes, including the fast-evolving female-biased genes on the dot chromosome when expressed in females (0.81 vs. 0.68; MWT $P = 0.017$).

To gain insight into the genetic basis (*cis*- or *trans*-regulatory) of gene expression divergence, we examined stock-specific expression following Coolon *et al.* (2015) (Wittkopp *et al.* 2004; McManus *et al.* 2010; Coolon *et al.* 2014) (see also “Materials and Methods”). We found strong positive correlations between gene expression divergence and the magnitude of both *cis*- and *trans*-regulatory divergence (Table 1 for hybrids from the cross between *D. yakuba* Tai18E2 females and *D. santomea* STO.4 males, and Table S3 for hybrids from the reciprocal cross). These correlations imply that any increase in gene expression divergence is likely to be the result of contributions from both *cis*- and *trans*-regulatory variation. For example, the overall trend of slower-X evolution

Table 1 Spearman's correlations (ρ) between gene expression divergence and the magnitude of *cis*- and *trans*-regulatory divergence

Transcriptome-Chromosome	<i>Cis</i> -	95% CI	<i>P</i>	<i>Trans</i> -	95% CI	<i>P</i>	Number of genes
Female-X	0.48	0.43–0.52	2.1×10^{-85}	0.63	0.59–0.66	2.3×10^{-167}	1504
Female-auto	0.50	0.48–0.52	$<1 \times 10^{-308}$	0.60	0.58–0.61	$<1 \times 10^{-308}$	7087
Male-auto	0.51	0.49–0.53	$<1 \times 10^{-308}$	0.61	0.60–0.63	$<1 \times 10^{-308}$	7085

Gene expression divergence was estimated using stock-specific reads from the *in silico* parental mixture; *cis*- and *trans*-regulatory divergence was estimated based on F_1 hybrids from the cross between *D. yakuba* Tai18E2 females and *D. santomea* STO.4 males; CI, Confidence intervals based on bootstrapping (10,000 replicates); X, X chromosome; Auto, autosomes (2 and 3).

for gene expression divergence in females is accompanied by significantly lower *cis*- and *trans*-regulatory divergence for X-linked genes than for autosomal genes (MWT $P \leq 0.005$ for all cases; see Table S4). Likewise autosomal genes in the male transcriptome show increased *cis*- and *trans*-regulatory divergence relative to the same genes when analyzed in the female transcriptome, as expected from faster-male evolution (MWT $P \leq 0.0012$ for all cases; see Table S5). As a result, when we examined the different categories of genes with sex-biased expression, we detected that the fraction of genes with significant *cis*-regulatory divergence increases with degree of sex-biased expression, and, hence, expression divergence; the same was observed for *trans*-regulatory divergence (Figure S1 for hybrids from the cross between *D. yakuba* Tai18E2 females and *D. santomea* STO.4 males, and Tables S6 and S7 for hybrids from the reciprocal cross).

Recessive regulatory incompatibilities involving the X chromosome contribute to hybrid misexpression

To test the dominance theory for hybrid transcriptomes, we compared gene expression profiles of hybrids and parental species (see Methods). It is important to emphasize that the degree of misexpression of each hybrid genotype was assessed by comparison with the corresponding parental stocks. For example, the degree of misexpression of attached-X hybrid females was determined based on the comparison with females of the *D. yakuba* and *D. santomea* attached-X parental stocks combined. To make the female and male transcriptomes comparable, we examined misexpression of autosomal genes only, and limited our analysis to the same subset of genes in females as in males. We found that the hybrid female transcriptome shows a significantly lower degree of misexpression than the hybrid male transcriptome (0.21 vs. 0.32; MWT $P = 1.7 \times 10^{-158}$ for hybrids from the cross between *D. yakuba* Tai18E2 females and *D. santomea* STO.4 males; 0.20 vs. 0.34; MWT $P < 1 \times 10^{-308}$ for hybrids from the reciprocal cross). This observation can potentially be attributed to the hemizygoty of the X chromosome in males, to faster-male evolution, or a combination of both.

To evaluate the contribution of recessive factors on the X chromosome to hybrid misexpression, we examined transcript abundance for autosomal genes in attached-X hybrid females. Reminiscent of males, attached-X hybrid females show a significantly greater degree of misexpression than

standard hybrid females [0.29 vs. 0.21; MWT $P = 8.7 \times 10^{-71}$ for hybrids from the crosses between *D. yakuba* females [Tai18E2 or C(1)RM] and *D. santomea* males [STO.4 or C(1)RM]; Table S8 shows equivalent results for hybrids from the reciprocal crosses]. Figure 5 shows the results for the different categories of genes with sex-biased expression. The increased misexpression in attached-X relative to standard hybrid females is also observed in genes with nonsex-biased expression and sex-specific expression, with FSGs showing a particularly extreme pattern (Figure 6). These results suggest that there is a significant fraction of recessive regulatory incompatibilities involving the X chromosome that are masked in standard hybrid females but are fully uncovered in attached-X hybrid females and in hybrid males. The overall degree of misexpression in attached-X hybrid females, however, is not as high as in hybrid males, which suggests that additional factors like faster-male evolution are necessary to fully explain misexpression in hybrid males [0.29 vs. 0.32; MWT $P = 4.0 \times 10^{-23}$ for hybrids from the crosses between *D. yakuba* females [C(1)RM or Tai18E2] and *D. santomea* males [C(1)RM or STO.4]; see Table S8 for hybrids from the reciprocal crosses].

To investigate the impact that genetic variation linked to sex chromosomes or cytoplasmic factors may have on gene expression patterns of autosomes, we examined differences in expression between interspecific hybrids from reciprocal crosses [e.g., F_1 hybrids ($T \times S$) vs. F_1 hybrids ($S \times T$) in Figure 1]. Autosomal genes are less differentially expressed between the two reciprocal attached-X hybrid females than between the two reciprocal hybrid males (0.15 vs. 0.20; MWT $P = 3.28 \times 10^{-80}$) but more differentially expressed than between the two reciprocal standard hybrid females (0.15 vs. 0.10; MWT $P = 7.7 \times 10^{-166}$). Remarkably, the median difference in expression between reciprocal hybrid males for autosomal MSGs is increased almost eightfold relative to the median difference observed for FSGs between reciprocal attached-X hybrid females (1.55 vs. 0.20; MWT $P = 1.35 \times 10^{-42}$). Altogether, our results highlight the importance that recessive variation and rapidly evolving factors linked to sex chromosomes or cytoplasm have on autosomal gene expression.

Discussion

Our study provides a comprehensive view of transcriptome evolution in adult females and males of the *D. yakuba*–*D.*

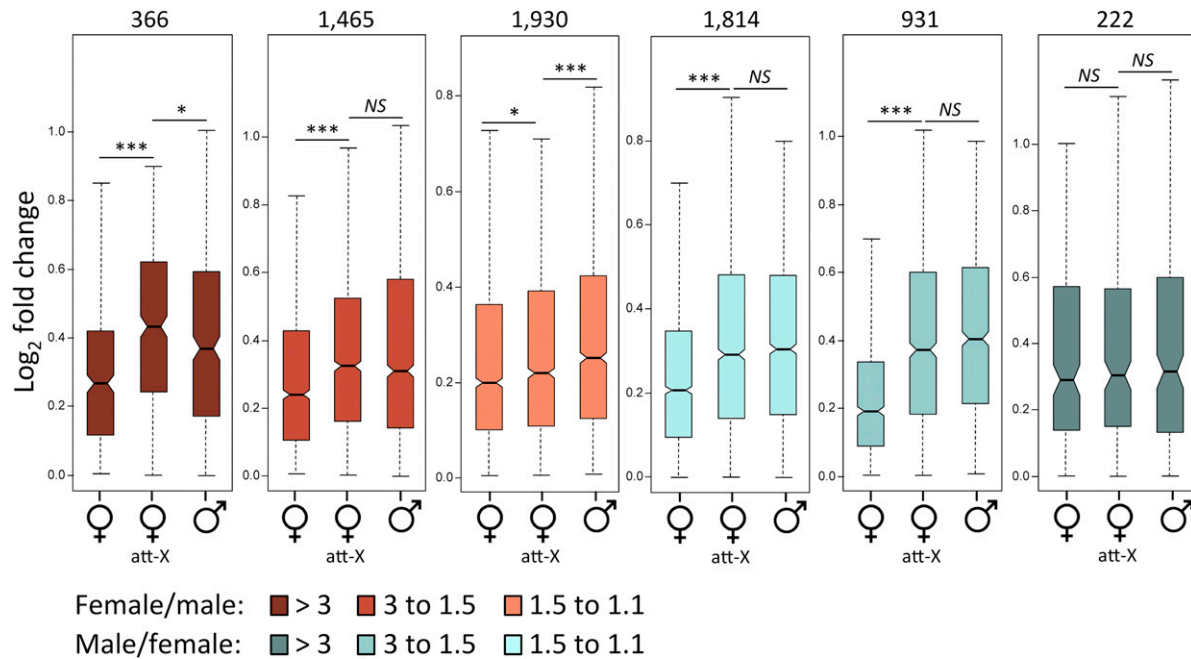


Figure 5 Misexpression of autosomal genes with different degrees of sex-biased expression in standard hybrid females, attached-X (att-X) hybrid females, and hybrid males. The numbers of genes analyzed in each sex-biased category are shown on top of the panels (chromosomes 2 and 3). Note that only genes expressed in both sexes were included in the analysis. Misexpression data are based on first generation hybrids from the crosses between *D. yakuba* females [Tai18E2 or C(1)RM] and *D. santomea* males [STO.4 or C(1)RM]. Probabilities are based on Mann-Whitney tests, where NS indicates not significant, * $P < 0.05$, ** $P < 0.001$, *** $P < 1 \times 10^{-4}$. (See Figure 3 legend for boxplot explanation.)

santomea system, its molecular mechanisms, and its consequences on patterns of gene expression in interspecific hybrids. Our emphasis lies on the effects of the X chromosome. We found that both female and male transcriptomes show some evidence of accelerated gene expression divergence driven by genes with sex-biased expression. Similar trends have been reported in other systems and have been attributed to (1) relaxed selective constraints due to reduced pleiotropic effects associated with increased tissue specificity or low levels of expression, and/or (2) a considerable fraction of positive selection, especially in genes with male-biased expression (Meiklejohn *et al.* 2003; Parisi *et al.* 2003; Ranz *et al.* 2003; Zhang *et al.* 2004, 2007; Khaitovich *et al.* 2005; Proschel *et al.* 2006; Ellegren and Parsch 2007; Haerty *et al.* 2007; Voolstra *et al.* 2007; Jiang and Machado 2009; Meisel 2011; Assis *et al.* 2012; Grath and Parsch 2012, 2016; Parsch and Ellegren 2013; Harrison *et al.* 2015).

Our results also reveal the dual (or sexually dimorphic) nature of transcriptome evolution and emphasize the importance of studying both sexes. While gene expression divergence for genes with sex-biased expression is consistently high in the sex toward which the expression is biased, in the opposite sex transcript abundance appears to be more conserved (Figure 3). This low divergence, we propose, reflects strong functional constraints on gene expression in tissues and/or pathways shared by both sexes. The higher expression divergence observed in the sex toward which the expression is biased may be the result of additional sex-specific regulatory components evolving by either positive selection

or relaxed negative selection. Our expression analysis of the dot chromosome gives support to the latter, at least for genes with female-biased expression. Similar to the proposal that selection on transcript levels for a given gene can vary across developmental stages (Artieri and Singh 2010; Kalinka *et al.* 2010), our data show that it also varies between sexes for a large fraction of the genome. Our results are also consistent with sexes adopting different expression strategies for their specialized function (Gibilisco *et al.* 2016). One way to attain this is through sexually dimorphic *trans*-regulatory environments that often interact with *cis*-regulatory variation differently in females than in males (Coolon *et al.* 2013; Meiklejohn *et al.* 2014).

When we analyzed all the genes expressed in adults as a single class, we found evidence of overall slower-X evolution of gene expression in both female and male transcriptomes (Figure 4). The molecular mechanism underlying this decreased gene expression divergence in X-linked genes involves contributions from both *cis*- and *trans*-regulatory variation, as proposed for species of the *D. melanogaster* subgroup to explain faster-X evolution of gene expression (Coolon *et al.* 2015). The observations of slower-X evolution can be explained by a significant contribution of weakly deleterious mutations to gene expression divergence, with more effective purifying selection on the X chromosome. This may be because either $N_{eX}/N_{eA} > 0.75$ (but see below) or because there is a large fraction of recessive deleterious mutations influencing gene expression variation (Vicoso and Charlesworth 2009a; Mank *et al.* 2010b). Alternatively, our findings of

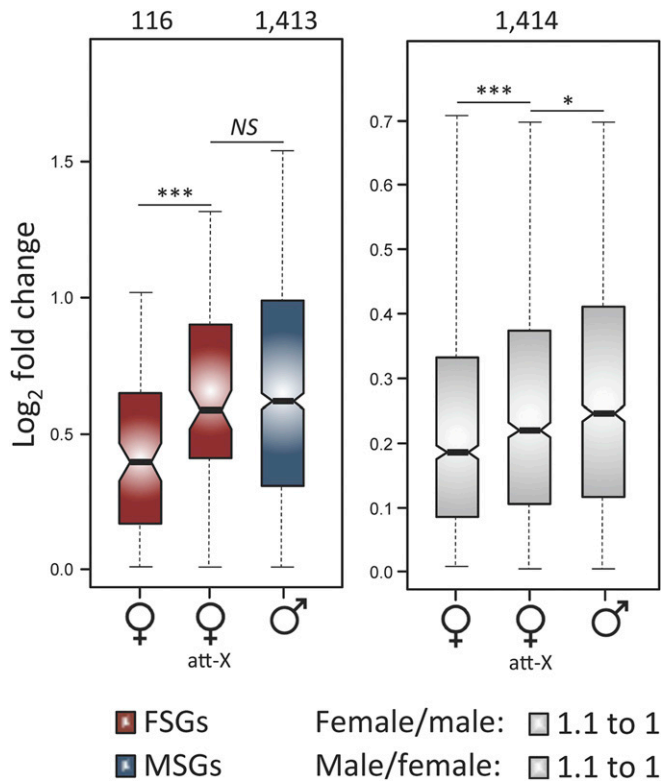


Figure 6 Misexpression of autosomal genes with sex-specific and non-sex-biased expression in standard hybrid females, attached-X (att-X) hybrid females, and hybrid males. The numbers of genes analyzed in each category are shown on top of the panels (chromosomes 2 and 3). FSGs, genes with female-specific expression; MSGs, genes with male-specific expression. Misexpression data based on first generation hybrids from the crosses between *D. yakuba* females [Tai18E2 or C(1)RM] and *D. santomea* males [STO.4 or C(1)RM]. Probabilities are based on Mann-Whitney tests, where NS indicates not significant, * $P < 0.05$, ** $P < 0.001$, *** $P < 1 \times 10^{-4}$ (see Figure 3 legend for boxplot explanation).

slower-X could be the result of differences in mutation rates between the X chromosome and autosomes. In *D. melanogaster*, the mutation rate in the male germline is slightly higher than that in the female germline—a difference that can potentially lead to slower-X evolution (Miyata *et al.* 1987; Bachtrog 2008; Keightley *et al.* 2009). There is also a third explanation: in very closely related species ancestral polymorphism represents a non-negligible fraction of divergence, and, therefore, slower-X evolution may just reflect the difference in ancestral N_{eX} and N_{eA} , with $N_{eX} < N_{eA}$. This may indeed be the case in the *D. yakuba*–*D. santomea* system, as a genome-wide analysis of putatively neutral sites [bases 8–30 of small introns (<65 bp); Llopart 2018] indicates that the median nucleotide heterozygosity per base pair (Watterson 1975) is significantly smaller on the X chromosome than on autosomes for a *D. yakuba* population from Nairobi, Kenya, (0.015 vs. 0.019; MWT $P = 0.02$) (Rogers *et al.* 2014, 2015). Similarly, a multilocus study of *D. yakuba* and *D. santomea* populations from the island of São Tomé reported that the N_{eX}/N_{eA} was close to the theoretical expectation of 0.75 (Llopart *et al.* 2005). As such, a tendency toward slower-X is

expected to be the default observation in many closely related species.

Studies of gene expression divergence in several *Drosophila* species show that the chances of observing faster-X (or slower-X) evolution in transcriptome data depend on species, sex, developmental stage, and tissue under study (Khaitovich *et al.* 2005; Brawand *et al.* 2011; Kayserili *et al.* 2012; Llopart 2012; Meisel *et al.* 2012; Meisel and Connallon 2013; Coolon *et al.* 2015; Dean *et al.* 2015). We suggest that this variation may be the result of a combination of biological and experimental factors. Among the biological factors, the N_{eX}/N_{eA} has been shown by population genetics models to have a critical impact on whether faster-X evolution is expected (Vicoso and Charlesworth 2009a; Mank *et al.* 2010b). The number of breeding females and males, differences between the two sexes in the variance in reproductive success (*i.e.*, mating system), demographic events, or differences in recombination rates between the X chromosome and autosomes (Langley *et al.* 1988; Connallon 2007; Pool and Nielsen 2007; Vicoso and Charlesworth 2009b; Charlesworth 2012; Comeron *et al.* 2012; Ávila *et al.* 2015; Comeron 2017) are some of the additional biological factors that can be species specific and also considerably affect N_{eX}/N_{eA} (Vicoso and Charlesworth 2009a). It is also important to recognize that factors associated with experimental design, like the specific stocks used in comparisons of closely related species, the subset of genes under study, or statistical cutoffs may as well play a critical role in our ability to detect faster-X evolution of gene expression.

Of all the genes with sexually dimorphic expression analyzed in this study, X-linked MSGs are the most distinct class. They show transcriptional faster-X and their high gene expression divergence is even greater than that of the rapidly evolving female-biased genes on the dot chromosome. Based on previously reported surveys of neutral polymorphism in several *Drosophila* species, there is a 3- to 10-fold reduction in effective population size and, therefore, in the scaled-population selection coefficient on the dot chromosome relative to the X and autosomes (Berry *et al.* 1991; Jensen *et al.* 2002; Wang *et al.* 2002, 2004; Betancourt *et al.* 2009; Arguello *et al.* 2010)—a result also observed in *D. yakuba* (Llopart 2018). As a result, we suggest that it is unlikely that the faster-X gene expression evolution of MSGs is due to relaxed selection against deleterious mutations on the X chromosome. The overall finding of slower-X evolution for gene expression divergence in male transcriptomes also militates against this possibility. Instead, we propose that the faster-X observed for these genes in the *D. yakuba*–*D. santomea* system is the result of a higher incidence of beneficial regulatory mutations, possibly associated with sexual selection and/or sexual conflict (Parsch and Ellegren 2013).

Our examination of gene expression in attached-X hybrid females shows that autosomal misexpression increases when the two X chromosomes are inherited from the same species (Figure 5 and Figure 6). It is important to emphasize that this is not necessarily an inevitable result because, by carrying

two different *X* chromosomes, standard hybrid females are predicted to suffer twice as many possible hybrid incompatibilities involving the *X* chromosome as hybrid males (Orr 1993; Turelli and Orr 1995; Orr and Turelli 1996). A potential caveat of our analyses of misexpression in attached-*X* hybrid females is the presence of the *Y* chromosome wherein variation has been shown to impact transcriptome profiles (Lemos *et al.* 2008b; Jiang *et al.* 2010; Sackton *et al.* 2011; Yee *et al.* 2015; Branco *et al.* 2017; Wang *et al.* 2018). We argue, however, that we control for the effects of the *Y* chromosome because the degree of misexpression in attached-*X* hybrid females was estimated using parental attached-*X* females who also carry a *Y* chromosome (see *Results*). Moreover, we found no evidence that the presence of a *Y* chromosome in females increases overall gene expression divergence in interspecific comparisons of our parental stocks of *D. yakuba* and *D. santomea* (MWT $P > 0.05$), even though incompatibilities involving the *Y* chromosome are expected to be expressed in females because they have never been tested by natural selection. As a result, our findings suggest that the *Y* chromosome does not play a major role in the increased misexpression detected in attached-*X* hybrid females, although we cannot formally rule out a contribution.

It is also important to point out that none of the misexpression observed in attached-*X* hybrid females in the *D. yakuba*–*D. santomea* system is associated with sterility because these females are fertile. Our results suggest that there is a substantial fraction of recessive mutations that have the potential to generate regulatory incompatibilities involving the *X* chromosome. They also open the possibility that the hemizygoty of the *X* chromosome in males may significantly contribute to hybrid misexpression and ultimately lead to male sterility. Our findings align well with previous reports showing that *trans*-regulatory differences in expression are more likely to deviate from additivity than *cis*-regulatory variation (Wayne *et al.* 2004; Hughes *et al.* 2006; Lemos *et al.* 2008a; Gruber *et al.* 2012). Thus, regulatory incompatibilities in hybrid transcriptomes appear to conform to the X:A imbalance hypothesis, or its successor, the dominance theory (Muller 1940, 1942), in the *D. yakuba*–*D. santomea* system. The comparison of the two types of interspecific hybrid males also indicates that genetic variation linked to sex chromosomes substantially impacts the expression levels of *autosomal* genes with a high degree of male-biased expression, in agreement with previous observations (Lu *et al.* 2010; Llopart 2012). Although we have not formally evaluated regulatory interactions, these findings open the possibility that regulatory incompatibilities between *X*-linked and autosomal factors may be facilitating the large *X*-effect.

Both dominance theory and faster-*X* evolution have been proposed as forces that can explain the disproportionately large contribution of the *X* chromosome to hybrid dysfunction, particularly hybrid male sterility (*i.e.*, the large *X*-effect; Coyne and Orr 1989) (Turelli and Orr 1995, 2000; Orr and Turelli 1996; Masly and Presgraves 2007; Presgraves 2008; Moyle *et al.* 2010). As the rate of evolution of *X*-linked loci exceeds

that of autosomal loci, the large *X*-effect becomes more likely (Coyne and Orr 1989; Naveira 2003). Similarly, if alleles decreasing fitness in hybrids tend to act recessively (*i.e.*, dominance theory), it is easier to explain the large *X*-effect, even when the rates of evolution for the *X* chromosome and autosomes are not different (Turelli and Orr 1995, 2000; Orr and Turelli 1996). While either force alone can generate the large *X*-effect, in species like *D. yakuba* and *D. santomea*, the two forces pull together in the same direction for genes with a high degree of male-biased expression to easily yield the observed large *X*-effect (Coyne *et al.* 2004; Moehring *et al.* 2006). These arguments echo those put forward by Coyne and Orr (2004) to explain the relative contributions of dominance (*i.e.*, recessive *X*-linked alleles) and faster-male evolution to Haldane's rule. In the context of gene expression, our results also support the notion that recessive *X*-linked mutations and faster-*X* evolution of genes with a high degree of male-biased expression can potentially play a major role in hybrid male misexpression and the large *X*-effect.

Acknowledgments

We thank Jerry A. Coyne, Daven Presgraves, and two anonymous reviewers for their helpful comments on this manuscript. Our thanks also to Dani Herrig for her contributions during early stages of this study. We are grateful to the Iowa Institute of Human Genetics (University of Iowa), the Roy J. Carver Center for Genomics (University of Iowa), and the Iowa State DNA Facility (Iowa State University) for technical assistance. The computations in this study were run in the High-Performance Computing clusters at the University of Iowa. This work was supported in part by the National Science Foundation (NSF, Division of Environmental Biology) grant DEB1354921 to J.M.C. and A.L., and the National Institutes of Health Predoctoral Training Grant T32 to N.P.

Literature Cited

- Afgan, E., D. Baker, M. van den Beek, D. Blankenberg, D. Bouvier *et al.*, 2016 The Galaxy platform for accessible, reproducible and collaborative biomedical analyses: 2016 update. *Nucleic Acids Res.* 44: W3–W10. <https://doi.org/10.1093/nar/gkw343>
- Arguello, J. R., Y. Zhang, T. Kado, C. Fan, R. Zhao *et al.*, 2010 Recombination yet inefficient selection along the *Drosophila melanogaster* subgroup's fourth chromosome. *Mol. Biol. Evol.* 27: 848–861. <https://doi.org/10.1093/molbev/msp291>
- Artieri, C. G., and R. S. Singh, 2010 Molecular evidence for increased regulatory conservation during metamorphosis, and against deleterious cascading effects of hybrid breakdown in *Drosophila*. *BMC Biol.* 8: 26. <https://doi.org/10.1186/1741-7007-8-26>
- Artieri, C. G., W. Haerty, and R. S. Singh, 2007 Association between levels of coding sequence divergence and gene misregulation in *Drosophila* male hybrids. *J. Mol. Evol.* 65: 697–704. <https://doi.org/10.1007/s00239-007-9048-2>
- Assis, R., Q. Zhou, and D. Bachtrog, 2012 Sex-biased transcriptome evolution in *Drosophila*. *Genome Biol. Evol.* 4: 1189–1200. <https://doi.org/10.1093/gbe/evs093>

- Ávila, V., S. Marion de Procé, J. L. Campos, H. Borthwick, B. Charlesworth *et al.*, 2014 Faster-X effects in two *Drosophila* lineages. *Genome Biol. Evol.* 6: 2968–2982. <https://doi.org/10.1093/gbe/evu229>
- Ávila, V., J. L. Campos, and B. Charlesworth, 2015 The effects of sex-biased gene expression and X-linkage on rates of adaptive protein sequence evolution in *Drosophila*. *Biol. Lett.* 11: 20150117. <https://doi.org/10.1098/rsbl.2015.0117>
- Bachtrog, D., 2008 Evidence for male-driven evolution in *Drosophila*. *Mol. Biol. Evol.* 25: 617–619. <https://doi.org/10.1093/molbev/msn020>
- Baines, J. F., and B. Harr, 2007 Reduced X-linked diversity in derived populations of house mice. *Genetics* 175: 1911–1921. <https://doi.org/10.1534/genetics.106.069419>
- Baines, J. F., S. A. Sawyer, D. L. Hartl, and J. Parsch, 2008 Effects of X-linkage and sex-biased gene expression on the rate of adaptive protein evolution in *Drosophila*. *Mol. Biol. Evol.* 25: 1639–1650. <https://doi.org/10.1093/molbev/msn111>
- Barbash, D. A., and J. G. Lorigan, 2007 Lethality in *Drosophila melanogaster/Drosophila simulans* species hybrids is not associated with substantial transcriptional misregulation. *J. Exp. Zool. B Mol. Dev. Evol.* 308: 74–84. <https://doi.org/10.1002/jez.b.21128>
- Begun, D. J., A. K. Holloway, K. Stevens, L. W. Hillier, Y. P. Poh *et al.*, 2007 Population genomics: whole-genome analysis of polymorphism and divergence in *Drosophila simulans*. *PLoS Biol.* 5: e310. <https://doi.org/10.1371/journal.pbio.0050310>
- Benjamini, Y., and Y. Hochberg, 1995 Controlling the false discovery rate: a practical and powerful approach to multiple testing. *J. R. Stat. Soc. B* 57: 289–300.
- Berry, A. J., J. W. Ajioka, and M. Kreitman, 1991 Lack of polymorphism on the *Drosophila* fourth chromosome resulting from selection. *Genetics* 129: 1111–1117.
- Betancourt, A. J., and D. C. Presgraves, 2002 Linkage limits the power of natural selection in *Drosophila*. *Proc. Natl. Acad. Sci. USA* 99: 13616–13620. <https://doi.org/10.1073/pnas.212277199>
- Betancourt, A. J., D. C. Presgraves, and W. J. Swanson, 2002 A test for faster X evolution in *Drosophila*. *Mol. Biol. Evol.* 19: 1816–1819. <https://doi.org/10.1093/oxfordjournals.molbev.a004006>
- Betancourt, A. J., J. J. Welch, and B. Charlesworth, 2009 Reduced effectiveness of selection caused by a lack of recombination. *Curr. Biol.* 19: 655–660. <https://doi.org/10.1016/j.cub.2009.02.039>
- Branco, A. T., R. M. Brito, and B. Lemos, 2017 Sex-specific adaptation and genomic responses to Y chromosome presence in female reproductive and neural tissues. *Proc. Biol. Sci.* 284: 20172062. <https://doi.org/10.1098/rspb.2017.2062>
- Brawand, D., M. Soumillon, A. Necsulea, P. Julien, G. Csardi *et al.*, 2011 The evolution of gene expression levels in mammalian organs. *Nature* 478: 343–348. <https://doi.org/10.1038/nature10532>
- Catron, D. J., and M. A. Noor, 2008 Gene expression disruptions of organism vs. organ in *Drosophila* species hybrids. *PLoS One* 3: e3009. <https://doi.org/10.1371/journal.pone.0003009>
- Charlesworth, B., 1996 Background selection and patterns of genetic diversity in *Drosophila melanogaster*. *Genet. Res.* 68: 131–149. <https://doi.org/10.1017/S0016672300034029>
- Charlesworth, B., 2012 The role of background selection in shaping patterns of molecular evolution and variation: evidence from variability on the *Drosophila* X chromosome. *Genetics* 191: 233–246. <https://doi.org/10.1534/genetics.111.138073>
- Charlesworth, B., J. A. Coyne, and N. Barton, 1987 The relative rates of evolution of sex chromosomes and autosomes. *Am. Nat.* 130: 113–146. <https://doi.org/10.1086/284701>
- Charlesworth, B., M. T. Morgan, and D. Charlesworth, 1993 The effect of deleterious mutations on neutral molecular variation. *Genetics* 134: 1289–1303.
- Civetta, A., 2016 Misregulation of gene expression and sterility in interspecies hybrids: causal links and alternative hypotheses. *J. Mol. Evol.* 82: 176–182. <https://doi.org/10.1007/s00239-016-9734-z>
- Comeron, J. M., 2017 Background selection as null hypothesis in population genomics: insights and challenges from *Drosophila* studies. *Philos. Trans. R. Soc. Lond. B Biol. Sci.* 372: 20160471. <https://doi.org/10.1098/rstb.2016.0471>
- Comeron, J. M., and M. Kreitman, 2002 Population, evolutionary and genomic consequences of interference selection. *Genetics* 161: 389–410.
- Comeron, J. M., A. Williford, and R. M. Kliman, 2008 The Hill-Robertson effect: evolutionary consequences of weak selection and linkage in finite populations. *Heredity* (Edinb) 100: 19–31. <https://doi.org/10.1038/sj.hdy.6801059>
- Comeron, J. M., R. Ratnappan, and S. Bailin, 2012 The many landscapes of recombination in *Drosophila melanogaster*. *PLoS Genet.* 8: e1002905. <https://doi.org/10.1371/journal.pgen.1002905>
- Connallon, T., 2007 Adaptive protein evolution of X-linked and autosomal genes in *Drosophila*: implications for faster-X hypotheses. *Mol. Biol. Evol.* 24: 2566–2572. <https://doi.org/10.1093/molbev/msm199>
- Coolon, J. D., W. Webb, and P. J. Wittkopp, 2013 Sex-specific effects of cis-regulatory variants in *Drosophila melanogaster*. *Genetics* 195: 1419–1422. <https://doi.org/10.1534/genetics.113.156331>
- Coolon, J. D., C. J. McManus, K. R. Stevenson, B. R. Graveley, and P. J. Wittkopp, 2014 Tempo and mode of regulatory evolution in *Drosophila*. *Genome Res.* 24: 797–808. <https://doi.org/10.1101/gr.163014.113>
- Coolon, J. D., K. R. Stevenson, C. J. McManus, B. Yang, B. R. Graveley *et al.*, 2015 Molecular mechanisms and evolutionary processes contributing to accelerated divergence of gene expression on the *Drosophila* X chromosome. *Mol. Biol. Evol.* 32: 2605–2615. <https://doi.org/10.1093/molbev/msv135>
- Counterman, B. A., D. Ortiz-Barrientos, and M. A. Noor, 2004 Using comparative genomic data to test for fast-X evolution. *Evolution* 58: 656–660. <https://doi.org/10.1111/j.0014-3820.2004.tb01688.x>
- Coyne, J. A., 1992 Genetics and speciation. *Nature* 355: 511–515. <https://doi.org/10.1038/355511a0>
- Coyne, J. A., and H. A. Orr, 1989 Two rules of speciation, pp. 180–207 in *Speciation and its Consequences*, edited by D. Otte, and J. Endler. Sinauer Associates, Sunderland, MA.
- Coyne, J. A., and H. A. Orr, 2004 *Speciation*. Sinauer Associates, Sunderland, MA.
- Coyne, J. A., J. Rux, and J. R. David, 1991 Genetics of morphological differences and hybrid sterility between *Drosophila sechellia* and its relatives. *Genet. Res.* 57: 113–122. <https://doi.org/10.1017/S0016672300029177>
- Coyne, J. A., S. Elwyn, S. Y. Kim, and A. Llopart, 2004 Genetic studies of two sister species in the *Drosophila melanogaster* subgroup, *D. yakuba* and *D. santomea*. *Genet. Res.* 84: 11–26. <https://doi.org/10.1017/S0016672304007013>
- Crow, J. F., and M. Kimura, 1970 *An Introduction to Population Genetics Theory*. Harper and Row, New York.
- Dean, R., P. W. Harrison, A. E. Wright, F. Zimmer, and J. E. Mank, 2015 Positive selection underlies faster-Z evolution of gene expression in birds. *Mol. Biol. Evol.* 32: 2646–2656. <https://doi.org/10.1093/molbev/msv138>
- Dobzhansky, T., 1937 *Genetics and the Origin of Species*. Columbia University Press, New York.

- Drosophila 12 Genomes Consortium; Clark, A. G., M. B. Eisen, D. R. Smith, C. M. Bergman, B. Oliver *et al.*, 2007 Evolution of genes and genomes on the *Drosophila* phylogeny. *Nature* 450: 203–218. <https://doi.org/10.1038/nature06341>
- Ellegren, H., 2009 Genomic evidence for a large-Z effect. *Proc. Biol. Sci.* 276: 361–366. <https://doi.org/10.1098/rspb.2008.1135>
- Ellegren, H., and J. Parsch, 2007 The evolution of sex-biased genes and sex-biased gene expression. *Nat. Rev. Genet.* 8: 689–698. <https://doi.org/10.1038/nrg2167>
- Garrigan, D., S. B. Kingan, A. J. Geneva, J. P. Vedanayagam, and D. C. Presgraves, 2014 Genome diversity and divergence in *Drosophila mauritiana*: multiple signatures of faster X evolution. *Genome Biol. Evol.* 6: 2444–2458. <https://doi.org/10.1093/gbe/evu198>
- Gibilisco, L., Q. Zhou, S. S. Mahajan, and D. Bachtrog, 2016 Alternative splicing within and between *Drosophila* species, sexes, tissues, and developmental stages. *PLoS Genet.* 12: e1006464. <https://doi.org/10.1371/journal.pgen.1006464>
- Gomes, S., and A. Civetta, 2015 Hybrid male sterility and genome-wide misexpression of male reproductive proteases. *Sci. Rep.* 5: 11976. <https://doi.org/10.1038/srep11976>
- Gramates, L. S., S. J. Marygold, G. D. Santos, J. M. Urbano, G. Antonazzo *et al.*, 2017 FlyBase at 25: looking to the future. *Nucleic Acids Res.* 45: D663–D671. <https://doi.org/10.1093/nar/gkw1016>
- Grath, S., and J. Parsch, 2012 Rate of amino acid substitution is influenced by the degree and conservation of male-biased transcription over 50 million years of *Drosophila* evolution. *Genome Biol. Evol.* 4: 346–359. <https://doi.org/10.1093/gbe/evs012>
- Grath, S., and J. Parsch, 2016 Sex-biased gene expression. *Annu. Rev. Genet.* 50: 29–44. <https://doi.org/10.1146/annurev-genet-120215-035429>
- Gruber, J. D., K. Vogel, G. Kalay, and P. J. Wittkopp, 2012 Contrasting properties of gene-specific regulatory, coding, and copy number mutations in *Saccharomyces cerevisiae*: frequency, effects, and dominance. *PLoS Genet.* 8: e1002497. <https://doi.org/10.1371/journal.pgen.1002497>
- Guerrero, R. F., C. D. Muir, S. Josway, and L. C. Moyle, 2017 Pervasive antagonistic interactions among hybrid incompatibility loci. *PLoS Genet.* 13: e1006817. <https://doi.org/10.1371/journal.pgen.1006817>
- Haddrill, P. R., D. L. Halligan, D. Tomaras, and B. Charlesworth, 2007 Reduced efficacy of selection in regions of the *Drosophila* genome that lack crossing over. *Genome Biol.* 8: R18. <https://doi.org/10.1186/gb-2007-8-2-r18>
- Haerty, W., and R. S. Singh, 2006 Gene regulation divergence is a major contributor to the evolution of Dobzhansky-Muller incompatibilities between species of *Drosophila*. *Mol. Biol. Evol.* 23: 1707–1714. <https://doi.org/10.1093/molbev/msl033>
- Haerty, W., S. Jagadeeshan, R. J. Kulathinal, A. Wong, K. Ravi Ram *et al.*, 2007 Evolution in the fast lane: rapidly evolving sex-related genes in *Drosophila*. *Genetics* 177: 1321–1335. <https://doi.org/10.1534/genetics.107.078865>
- Haldane, J. B. S., 1922 Sex ratio and unisexual sterility in animal hybrids. *J. of Genetics* 12: 101–109.
- Harrison, P. W., A. E. Wright, F. Zimmer, R. Dean, S. H. Montgomery *et al.*, 2015 Sexual selection drives evolution and rapid turnover of male gene expression. *Proc. Natl. Acad. Sci. USA* 112: 4393–4398. <https://doi.org/10.1073/pnas.1501339112>
- Hill, W. G., and A. Robertson, 1966 The effect of linkage on limits to artificial selection. *Genet. Res.* 8: 269–294. <https://doi.org/10.1017/S0016672300010156>
- Hu, T. T., M. B. Eisen, K. R. Thornton, and P. Andolfatto, 2013 A second-generation assembly of the *Drosophila simulans* genome provides new insights into patterns of lineage-specific divergence. *Genome Res.* 23: 89–98. <https://doi.org/10.1101/gr.141689.112>
- Hudson, R. R., and N. L. Kaplan, 1995 Deleterious background selection with recombination. *Genetics* 141: 1605–1617.
- Hughes, K. A., J. F. Ayroles, M. M. Reedy, J. M. Drnevich, K. C. Rowe *et al.*, 2006 Segregating variation in the transcriptome: cis regulation and additivity of effects. *Genetics* 173: 1347–1355. <https://doi.org/10.1534/genetics.105.051474>
- Jensen, M. A., B. Charlesworth, and M. Kreitman, 2002 Patterns of genetic variation at a chromosome 4 locus of *Drosophila melanogaster* and *D. simulans*. *Genetics* 160: 493–507.
- Jiang, P. P., D. L. Hartl, and B. Lemos, 2010 Y not a dead end: epistatic interactions between Y-linked regulatory polymorphisms and genetic background affect global gene expression in *Drosophila melanogaster*. *Genetics* 186: 109–118. <https://doi.org/10.1534/genetics.110.118109>
- Jiang, Z. F., and C. A. Machado, 2009 Evolution of sex-dependent gene expression in three recently diverged species of *Drosophila*. *Genetics* 183: 1175–1185. <https://doi.org/10.1534/genetics.109.105775>
- Johnson, N. A., and J. Lachance, 2012 The genetics of sex chromosomes: evolution and implications for hybrid incompatibility. *Ann. N. Y. Acad. Sci.* 1256: E1–E22. <https://doi.org/10.1111/j.1749-6632.2012.06748.x>
- Kalinka, A. T., K. M. Varga, D. T. Gerrard, S. Preibisch, D. L. Corcoran *et al.*, 2010 Gene expression divergence recapitulates the developmental hourglass model. *Nature* 468: 811–814. <https://doi.org/10.1038/nature09634>
- Kaysereili, M. A., D. T. Gerrard, P. Tomancak, and A. T. Kalinka, 2012 An excess of gene expression divergence on the X chromosome in *Drosophila* embryos: implications for the faster-X hypothesis. *PLoS Genet.* 8: e1003200. <https://doi.org/10.1371/journal.pgen.1003200>
- Keightley, P. D., U. Trivedi, M. Thomson, F. Oliver, S. Kumar *et al.*, 2009 Analysis of the genome sequences of three *Drosophila melanogaster* spontaneous mutation accumulation lines. *Genome Res.* 19: 1195–1201. <https://doi.org/10.1101/gr.091231.109>
- Khaitovich, P., I. Hellmann, W. Enard, K. Nowick, M. Leinweber *et al.*, 2005 Parallel patterns of evolution in the genomes and transcriptomes of humans and chimpanzees. *Science* 309: 1850–1854. <https://doi.org/10.1126/science.1108296>
- Kimura, M., 1964 Diffusion models in population genetics. *J. Appl. Probab.* 1: 177–232. <https://doi.org/10.2307/3211856>
- Kousathanas, A., D. L. Halligan, and P. D. Keightley, 2014 Faster-X adaptive protein evolution in house mice. *Genetics* 196: 1131–1143. <https://doi.org/10.1534/genetics.113.158246>
- Lachaise, D., M. Harry, M. Solignac, F. Lemeunier, V. Bénassi *et al.*, 2000 Evolutionary novelties in islands: *Drosophila santomea* a new *melanogaster* sister species from São Tomé. *Proc. Biol. Sci.* B 267: 1487–1495. <https://doi.org/10.1098/rspb.2000.1169>
- Landry, C. R., P. J. Wittkopp, C. H. Taubes, J. M. Ranz, A. G. Clark *et al.*, 2005 Compensatory cis-trans evolution and the dysregulation of gene expression in interspecific hybrids of *Drosophila*. *Genetics* 171: 1813–1822. <https://doi.org/10.1534/genetics.105.047449>
- Langley, C. H., E. Montgomery, R. Hudson, N. Kaplan, and B. Charlesworth, 1988 On the role of unequal exchange in the containment of transposable element copy number. *Genet. Res.* 52: 223–235. <https://doi.org/10.1017/S0016672300027695>
- Langmead, B., and S. L. Salzberg, 2012 Fast gapped-read alignment with Bowtie 2. *Nat. Methods* 9: 357–359. <https://doi.org/10.1038/nmeth.1923>
- Larson, E. L., D. Vanderpool, S. Keeble, M. Zhou, B. A. Sarver *et al.*, 2016 Contrasting levels of molecular evolution on the mouse X chromosome. *Genetics* 203: 1841–1857. <https://doi.org/10.1534/genetics.116.186825>

- Lemos, B., L. O. Araripe, P. Fontanillas, and D. L. Hartl, 2008a Dominance and the evolutionary accumulation of cis- and trans-effects on gene expression. *Proc. Natl. Acad. Sci. USA* 105: 14471–14476. <https://doi.org/10.1073/pnas.0805160105>
- Lemos, B., L. O. Araripe, and D. L. Hartl, 2008b Polymorphic Y chromosomes harbor cryptic variation with manifold functional consequences. *Science* 319: 91–93. <https://doi.org/10.1126/science.1148861>
- Li, B., and C. N. Dewey, 2011 RSEM: accurate transcript quantification from RNA-Seq data with or without a reference genome. *BMC Bioinformatics* 12: 323. <https://doi.org/10.1186/1471-2105-12-323>
- Li, H., B. Handsaker, A. Wysoker, T. Fennell, J. Ruan *et al.*, 2009 The sequence alignment/map format and SAMtools. *Bioinformatics* 25: 2078–2079. <https://doi.org/10.1093/bioinformatics/btp352>
- Llopart, A., 2012 The rapid evolution of X-linked male-biased gene expression and the large-X effect in *Drosophila yakuba*, *D. santomea* and their hybrids. *Mol. Biol. Evol.* 29: 3873–3886. <https://doi.org/10.1093/molbev/mss190>
- Llopart, A., 2015 Parallel faster-X evolution of gene expression and protein sequences in *Drosophila*: beyond differences in expression properties and protein interactions. *PLoS One* 10: e0116829. <https://doi.org/10.1371/journal.pone.0116829>
- Llopart, A., 2018 Faster-X evolution of gene expression is driven by recessive adaptive cis-regulatory variation in *Drosophila*. *Mol. Ecol.* <https://doi.org/10.1111/mec.14708>
- Llopart, A., D. Lachaise, and J. A. Coyne, 2005 Multilocus analysis of introgression between two sympatric sister species of *Drosophila*: *Drosophila yakuba* and *D. santomea*. *Genetics* 171: 197–210. <https://doi.org/10.1534/genetics.104.033597>
- Love, M. I., W. Huber, and S. Anders, 2014 Moderated estimation of fold change and dispersion for RNA-seq data with DESeq2. *Genome Biol.* 15: 550. <https://doi.org/10.1186/s13059-014-0550-8>
- Lu, J., and C. I. Wu, 2005 Weak selection revealed by the whole-genome comparison of the X chromosome and autosomes of human and chimpanzee. *Proc. Natl. Acad. Sci. USA* 102: 4063–4067. <https://doi.org/10.1073/pnas.0500436102>
- Lu, X., J. A. Shapiro, C. T. Ting, Y. Li, C. Li *et al.*, 2010 Genome-wide misexpression of X-linked vs. autosomal genes associated with hybrid male sterility. *Genome Res.* 20: 1097–1102. <https://doi.org/10.1101/gr.076620.108>
- Mack, K. L., and M. W. Nachman, 2017 Gene regulation and speciation. *Trends Genet.* 33: 68–80. <https://doi.org/10.1016/j.tig.2016.11.003>
- Maheshwari, S., and D. A. Barbash, 2012 Cis-by-Trans regulatory divergence causes the asymmetric lethal effects of an ancestral hybrid incompatibility gene. *PLoS Genet.* 8: e1002597. <https://doi.org/10.1371/journal.pgen.1002597>
- Mank, J. E., E. Axelsson, and H. Ellegren, 2007 Fast-X on the Z: rapid evolution of sex-linked genes in birds. *Genome Res.* 17: 618–624. <https://doi.org/10.1101/gr.6031907>
- Mank, J. E., K. Nam, and H. Ellegren, 2010a Faster-Z evolution is predominantly due to genetic drift. *Mol. Biol. Evol.* 27: 661–670. <https://doi.org/10.1093/molbev/msp282>
- Mank, J. E., B. Vicoso, S. Berlin, and B. Charlesworth, 2010b Effective population size and the faster-X effect: empirical results and their interpretation. *Evolution* 64: 663–674. <https://doi.org/10.1111/j.1558-5646.2009.00853.x>
- Masly, J. P., and D. C. Presgraves, 2007 High-resolution genome-wide dissection of the two rules of speciation in *Drosophila*. *PLoS Biol.* 5: e243. <https://doi.org/10.1371/journal.pbio.0050243>
- Matute, D. R., I. A. Butler, D. A. Turissini, and J. A. Coyne, 2010 A test of the snowball theory for the rate of evolution of hybrid incompatibilities. *Science* 329: 1518–1521. <https://doi.org/10.1126/science.1193440>
- Maynard Smith, J., and J. Haigh, 1974 The hitch-hiking effect of a favourable gene. *Genet. Res.* 23: 23–35. <https://doi.org/10.1017/S0016672300014634>
- McManus, C. J., J. D. Coolon, M. O. Duff, J. Eipper-Mains, B. R. Graveley *et al.*, 2010 Regulatory divergence in *Drosophila* revealed by mRNA-seq. *Genome Res.* 20: 816–825. <https://doi.org/10.1101/gr.102491.109>
- Meiklejohn, C. D., J. Parsch, J. M. Ranz, and D. L. Hartl, 2003 Rapid evolution of male-biased gene expression in *Drosophila*. *Proc. Natl. Acad. Sci. USA* 100: 9894–9899. <https://doi.org/10.1073/pnas.1630690100>
- Meiklejohn, C. D., J. D. Coolon, D. L. Hartl, and P. J. Wittkopp, 2014 The roles of cis- and trans-regulation in the evolution of regulatory incompatibilities and sexually dimorphic gene expression. *Genome Res.* 24: 84–95. <https://doi.org/10.1101/gr.156414.113>
- Meisel, R. P., 2011 Towards a more nuanced understanding of the relationship between sex-biased gene expression and rates of protein-coding sequence evolution. *Mol. Biol. Evol.* 28: 1893–1900. <https://doi.org/10.1093/molbev/msr010>
- Meisel, R. P., and T. Connallon, 2013 The faster-X effect: integrating theory and data. *Trends Genet.* 29: 537–544. <https://doi.org/10.1016/j.tig.2013.05.009>
- Meisel, R. P., J. H. Malone, and A. G. Clark, 2012 Faster-X evolution of gene expression in *Drosophila*. *PLoS Genet.* 8: e1003013. <https://doi.org/10.1371/journal.pgen.1003013>
- Michalak, P., and M. A. Noor, 2003 Genome-wide patterns of expression in *Drosophila* pure species and hybrid males. *Mol. Biol. Evol.* 20: 1070–1076. <https://doi.org/10.1093/molbev/msg119>
- Michalak, P., and M. A. Noor, 2004 Association of misexpression with sterility in hybrids of *Drosophila simulans* and *D. mauritiana*. *J. Mol. Evol.* 59: 277–282. <https://doi.org/10.1007/s00239-004-2622-y>
- Miyata, T., H. Hayashida, K. Kuma, K. Mitsuyasu, and T. Yasunaga, 1987 Male-driven molecular evolution: a model and nucleotide sequence analysis. *Cold Spring Harb. Symp. Quant. Biol.* 52: 863–867. <https://doi.org/10.1101/SQB.1987.052.01.094>
- Moehring, A. J., A. Llopart, S. Elwyn, J. A. Coyne, and T. F. Mackay, 2006 The genetic basis of postzygotic reproductive isolation between *Drosophila santomea* and *D. yakuba* due to hybrid male sterility. *Genetics* 173: 225–233. <https://doi.org/10.1534/genetics.105.052985>
- Moehring, A. J., K. C. Teeter, and M. A. Noor, 2007 Genome-wide patterns of expression in *Drosophila* pure species and hybrid males. II. Examination of multiple-species hybridizations, platforms, and life cycle stages. *Mol. Biol. Evol.* 24: 137–145. <https://doi.org/10.1093/molbev/msl142>
- Moyle, L. C., and T. Nakazato, 2010 Hybrid incompatibility “snowballs” between *Solanum* species. *Science* 329: 1521–1523. <https://doi.org/10.1126/science.1193063>
- Moyle, L. C., C. D. Muir, M. V. Han, and M. W. Hahn, 2010 The contribution of gene movement to the “two rules of speciation”. *Evolution* 64: 1541–1557. <https://doi.org/10.1111/j.1558-5646.2010.00990.x>
- Muller, H. J., 1940 Bearing of the *Drosophila* work on systematics, pp. 185–268 in *The New Systematics*, edited by J. S. Huxley. Clarendon Press, Oxford.
- Muller, H. J., 1942 Isolating mechanisms, evolution, and temperature. *Biol. Symp.* 6: 71–125.
- Musters, H., M. A. Huntley, and R. S. Singh, 2006 A genomic comparison of faster-sex, faster-X, and faster-male evolution between *Drosophila melanogaster* and *Drosophila pseudoobscura*. *J. Mol. Evol.* 62: 693–700. <https://doi.org/10.1007/s00239-005-0165-5>

- Naveira, H. F., 2003 On the relative roles of faster-X evolution and dominance in the establishment of intrinsic postzygotic isolating barriers. *Genetica* 118: 41–50. <https://doi.org/10.1023/A:1022978222021>
- Nielsen, R., C. Bustamante, A. G. Clark, S. Glanowski, T. B. Sackton *et al.*, 2005 A scan for positively selected genes in the genomes of humans and chimpanzees. *PLoS Biol.* 3: e170. <https://doi.org/10.1371/journal.pbio.0030170>
- Noor, M. A., 2005 Patterns of evolution of genes disrupted in expression in *Drosophila* species hybrids. *Genet. Res.* 85: 119–125. <https://doi.org/10.1017/S0016672305007500>
- Orr, H. A., 1987 Genetics of male and female sterility in hybrids of *Drosophila pseudoobscura* and *D. persimilis*. *Genetics* 116: 555–563.
- Orr, H. A., 1993 A mathematical model of Haldane's rule. *Evolution* 47: 1606–1611. <https://doi.org/10.1111/j.1558-5646.1993.tb02179.x>
- Orr, H. A., 1995 The population genetics of speciation: the evolution of hybrid incompatibilities. *Genetics* 139: 1805–1813.
- Orr, H. A., and M. A. Turelli, 1996 Dominance and Haldane's rule. *Genetics* 143: 613–616.
- Orr, H. A., and A. J. Betancourt, 2001 Haldane's sieve and adaptation from the standing genetic variation. *Genetics* 157: 875–884.
- Ortiz-Barrientos, D., B. A. Counterman, and M. A. Noor, 2007 Gene expression divergence and the origin of hybrid dysfunctions. *Genetica* 129: 71–81. <https://doi.org/10.1007/s10709-006-0034-1>
- Parisi, M., R. Nuttall, D. Naiman, G. Bouffard, J. Malley *et al.*, 2003 Paucity of genes on the *Drosophila* X chromosome showing male-biased expression. *Science* 299: 697–700. <https://doi.org/10.1126/science.1079190>
- Parsch, J., and H. Ellegren, 2013 The evolutionary causes and consequences of sex-biased gene expression. *Nat. Rev. Genet.* 14: 83–87. <https://doi.org/10.1038/nrg3376>
- Pool, J. E., and R. Nielsen, 2007 Population size changes reshape genomic patterns of diversity. *Evolution* 61: 3001–3006. <https://doi.org/10.1111/j.1558-5646.2007.00238.x>
- Presgraves, D. C., 2008 Sex chromosomes and speciation in *Drosophila*. *Trends Genet.* 24: 336–343. <https://doi.org/10.1016/j.tig.2008.04.007>
- Proschel, M., Z. Zhang, and J. Parsch, 2006 Widespread adaptive evolution of *Drosophila* genes with sex-biased expression. *Genetics* 174: 893–900. <https://doi.org/10.1534/genetics.106.058008>
- Ranz, J. M., C. I. Castillo-Davis, C. D. Meiklejohn, and D. L. Hartl, 2003 Sex-dependent gene expression and evolution of the *Drosophila* transcriptome. *Science* 300: 1742–1745. <https://doi.org/10.1126/science.1085881>
- Ranz, J. M., K. Namgyal, G. Gibson, and D. L. Hartl, 2004 Anomalies in the expression profile of interspecific hybrids of *Drosophila melanogaster* and *Drosophila simulans*. *Genome Res.* 14: 373–379. <https://doi.org/10.1101/gr.2019804>
- Reiland, J., and M. A. Noor, 2002 Little qualitative RNA misexpression in sterile male F1 hybrids of *Drosophila pseudoobscura* and *D. persimilis*. *BMC Evol. Biol.* 2: 16. <https://doi.org/10.1186/1471-2148-2-16>
- Rogers, R. L., J. M. Cridland, L. Shao, T. T. Hu, P. Andolfatto *et al.*, 2014 Landscape of standing variation for tandem duplications in *Drosophila yakuba* and *Drosophila simulans*. *Mol. Biol. Evol.* 31: 1750–1766. <https://doi.org/10.1093/molbev/msu124>
- Rogers, R. L., J. M. Cridland, L. Shao, T. T. Hu, P. Andolfatto *et al.*, 2015 Tandem duplications and the limits of natural selection in *Drosophila yakuba* and *Drosophila simulans*. *PLoS One* 10: e0132184. <https://doi.org/10.1371/journal.pone.0132184>
- Sackton, T. B., H. Montenegro, D. L. Hartl, and B. Lemos, 2011 Interspecific Y chromosome introgressions disrupt testis-specific gene expression and male reproductive phenotypes in *Drosophila*. *Proc. Natl. Acad. Sci. USA* 108: 17046–17051. <https://doi.org/10.1073/pnas.1114690108>
- Sackton, T. B., R. B. Corbett-Detig, J. Nagaraju, L. Vaishna, K. P. Arunkumar *et al.*, 2014 Positive selection drives faster-Z evolution in silk moths. *Evolution* 68: 2331–2342. <https://doi.org/10.1111/evo.12449>
- Satyaki, P. R., T. N. Cuykendall, K. H. Wei, N. J. Brideau, H. Kwak *et al.*, 2014 The *Hmr* and *Lhr* hybrid incompatibility genes suppress a broad range of heterochromatic repeats. *PLoS Genet.* 10: e1004240. <https://doi.org/10.1371/journal.pgen.1004240>
- Singh, N. D., A. M. Larracunte, and A. G. Clark, 2008 Contrasting the efficacy of selection on the X and autosomes in *Drosophila*. *Mol. Biol. Evol.* 25: 454–467. <https://doi.org/10.1093/molbev/msm275>
- Sundararajan, V., and A. Civetta, 2011 Male sex interspecies divergence and down regulation of expression of spermatogenesis genes in *Drosophila* sterile hybrids. *J. Mol. Evol.* 72: 80–89. <https://doi.org/10.1007/s00239-010-9404-5>
- Thornton, K., and M. Long, 2002 Rapid divergence of gene duplicates on the *Drosophila melanogaster* X chromosome. *Mol. Biol. Evol.* 19: 918–925. <https://doi.org/10.1093/oxfordjournals.molbev.a004149>
- Thornton, K., and M. Long, 2005 Excess of amino acid substitutions relative to polymorphism between X-linked duplications in *Drosophila melanogaster*. *Mol. Biol. Evol.* 22: 273–284. <https://doi.org/10.1093/molbev/msi015>
- Torgerson, D. G., and R. S. Singh, 2003 Sex-linked mammalian sperm proteins evolve faster than autosomal ones. *Mol. Biol. Evol.* 20: 1705–1709. <https://doi.org/10.1093/molbev/msg193>
- Torgerson, D. G., and R. S. Singh, 2006 Enhanced adaptive evolution of sperm-expressed genes on the mammalian X chromosome. *Heredity (Edinb)* 96: 39–44. <https://doi.org/10.1038/sj.hdy.6800749>
- Turelli, M., and H. A. Orr, 1995 The dominance theory of Haldane's rule. *Genetics* 140: 389–402.
- Turelli, M., and H. A. Orr, 2000 Dominance, epistasis and the genetics of postzygotic isolation. *Genetics* 154: 1663–1679.
- Veeramah, K. R., R. N. Gutenkunst, A. E. Woerner, J. C. Watkins, and M. F. Hammer, 2014 Evidence for increased levels of positive and negative selection on the X chromosome vs. autosomes in humans. *Mol. Biol. Evol.* 31: 2267–2282. <https://doi.org/10.1093/molbev/msu166>
- Vicoso, B., and D. Bachtrog, 2013 Reversal of an ancient sex chromosome to an autosome in *Drosophila*. *Nature* 499: 332–335. <https://doi.org/10.1038/nature12235>
- Vicoso, B., and D. Bachtrog, 2015 Numerous transitions of sex chromosomes in Diptera. *PLoS Biol.* 13: e1002078. <https://doi.org/10.1371/journal.pbio.1002078>
- Vicoso, B., and B. Charlesworth, 2006 Evolution on the X chromosome: unusual patterns and processes. *Nat. Rev. Genet.* 7: 645–653. <https://doi.org/10.1038/nrg1914>
- Vicoso, B., and B. Charlesworth, 2009a Effective population size and the faster-X effect: an extended model. *Evolution* 63: 2413–2426. <https://doi.org/10.1111/j.1558-5646.2009.00719.x>
- Vicoso, B., and B. Charlesworth, 2009b Recombination rates may affect the ratio of X to autosomal noncoding polymorphism in African populations of *Drosophila melanogaster*. *Genetics* 181: 1699–1701. <https://doi.org/10.1534/genetics.108.098004>
- Vicoso, B., J. J. Emerson, Y. Zektser, S. Mahajan, and D. Bachtrog, 2013 Comparative sex chromosome genomics in snakes: differentiation, evolutionary strata, and lack of global dosage compensation. *PLoS Biol.* 11: e1001643. <https://doi.org/10.1371/journal.pbio.1001643>

- Voolstra, C., D. Tautz, P. Farbrother, L. Eichinger, and B. Harr, 2007 Contrasting evolution of expression differences in the testis between species and subspecies of the house mouse. *Genome Res.* 17: 42–49. <https://doi.org/10.1101/gr.5683806>
- Wang, M., A. T. Branco, and B. Lemos, 2018 The Y chromosome modulates splicing and sex-biased intron retention rates in *Drosophila*. *Genetics* 208: 1057–1067. <https://doi.org/10.1534/genetics.117.300637>
- Wang, W., K. Thornton, A. Berry, and M. Long, 2002 Nucleotide variation along the *Drosophila melanogaster* fourth chromosome. *Science* 295: 134–137. <https://doi.org/10.1126/science.1064521>
- Wang, W., K. Thornton, J. J. Emerson, and M. Long, 2004 Nucleotide variation and recombination along the fourth chromosome in *Drosophila simulans*. *Genetics* 166: 1783–1794. <https://doi.org/10.1534/genetics.166.4.1783>
- Watterson, G. A., 1975 On the number of segregating sites in genetical models without recombination. *Theor. Popul. Biol.* 7: 256–276. [https://doi.org/10.1016/0040-5809\(75\)90020-9](https://doi.org/10.1016/0040-5809(75)90020-9)
- Wayne, M. L., Y. J. Pan, S. V. Nuzhdin, and L. M. McIntyre, 2004 Additivity and trans-acting effects on gene expression in male *Drosophila simulans*. *Genetics* 168: 1413–1420. <https://doi.org/10.1534/genetics.104.030973>
- Wei, K. H., A. G. Clark, and D. A. Barbash, 2014 Limited gene misregulation is exacerbated by allele-specific upregulation in lethal hybrids between *Drosophila melanogaster* and *Drosophila simulans*. *Mol. Biol. Evol.* 31: 1767–1778. <https://doi.org/10.1093/molbev/msu127>
- Wittkopp, P. J., B. K. Haerum, and A. G. Clark, 2004 Evolutionary changes in *cis* and *trans* gene regulation. *Nature* 430: 85–88. <https://doi.org/10.1038/nature02698>
- Wu, C.-I., and A. W. Davis, 1993 Evolution of postmating reproductive isolation: the composite nature of Haldane's rule and its genetic bases. *Am. Nat.* 142: 187–212. <https://doi.org/10.1086/285534>
- Wu, C. I., N. Johnson, and M. F. Palopoli, 1996 Haldane's rule and its legacy: why are there so many sterile males. *Trends Ecol. Evol.* 11: 281–284. [https://doi.org/10.1016/0169-5347\(96\)10033-1](https://doi.org/10.1016/0169-5347(96)10033-1)
- Yee, W. K., B. Rogell, B. Lemos, and D. K. Dowling, 2015 Intergenomic interactions between mitochondrial and Y-linked genes shape male mating patterns and fertility in *Drosophila melanogaster*. *Evolution* 69: 2876–2890. <https://doi.org/10.1111/evo.12788>
- Zhang, Y., D. Sturgill, M. Parisi, S. Kumar, and B. Oliver, 2007 Constraint and turnover in sex-biased gene expression in the genus *Drosophila*. *Nature* 450: 233–237. <https://doi.org/10.1038/nature06323>
- Zhang, Z., T. M. Hambuch, and J. Parsch, 2004 Molecular evolution of sex-biased genes in *Drosophila*. *Mol. Biol. Evol.* 21: 2130–2139. <https://doi.org/10.1093/molbev/msh223>

Communicating editor: D. Presgraves