







CASE REPORT

PAX5 alterations in an infant case of *KMT2A*-rearranged leukemia with lineage switch

Koji Nakajima¹ | Hirohito Kubota¹  | Itaru Kato¹  | Kiyotaka Isobe¹ | Hiroo Ueno¹ | Kagehiro Kozuki¹ | Kuniaki Tanaka¹ | Naoko Kawabata¹ | Takashi Mikami¹ | Kosuke Tamefusa²  | Ritsuo Nishiuchi² | Satoshi Saida¹ | Katsutsugu Umeda¹  | Hidefumi Hiramatsu¹  | Souichi Adachi³ | Junko Takita¹ 

¹Department of Pediatrics, Graduate School of Medicine, Kyoto University, Kyoto, Japan

²Department of Pediatrics, Kochi Health Sciences Center, Kochi, Japan

³Department of Human Health Sciences, Graduate School of Medicine, Kyoto University, Kyoto, Japan

Correspondence

Itaru Kato, Department of Pediatrics, Kyoto University Graduate School of Medicine, 54 Kawaharacho, Shogoin, Sakyo-ku, Kyoto 606-8507, Japan.
Email: itarkt@kuhp.kyoto-u.ac.jp

Funding information

Japan Society for the Promotion of Science KAKENHI, Grant/Award Number: JP19J11112, JP17H04224, JP18K19467, JP20H00528, JP21K19405; Project for Cancer Research and Therapeutic Evolution, Grant/Award Number: JP20cm0106509h9905; Practical Research for Innovative Cancer Control, Grant/Award Number: Japan Agency for Medical Research and Development, Grant/Award Number: JP19ck0106468h0001, JP21ck0106531; Princess Takamatsu Cancer Research Fund; The Mother and Child Health Foundation; Japan Leukemia Research Fund.

Abstract

Lineage switch is a rare event at leukemic relapse. While mostly known to occur in *KMT2A*-rearranged infant leukemia, the underlying mechanism is yet to be depicted. This case report describes a female infant who achieved remission of *KMT2A*-*MLL3*-rearranged acute monocytic leukemia, but 6 months thereafter, relapsed as *KMT2A*-*MLL3*-rearranged acute lymphocytic leukemia. Whole exome sequencing of the bone marrow obtained pre-post lineage switch revealed two somatic mutations of *PAX5* in the relapse sample. These two *PAX5* alterations were suggested to be loss of function, thus to have played the driver role in the lineage switch from acute monocytic leukemia to acute lymphocytic leukemia.

KEYWORDS

infant leukemia, *KMT2A* rearrangement, lineage switch, *PAX5*, whole exome sequencing

Abbreviations: ALL, acute lymphocytic leukemia; AML, acute myeloid leukemia; BCP-ALL, B cell precursor lymphoblastic leukemia; *KMT2A*, histone-lysine N-methyltransferase 2A; *MLL3*, super elongation complex subunit; MRI, magnetic resonance imaging; *PAX5*, paired box 5; *PAX5*-alt, *PAX5*-altered; RNA-seq, RNA sequencing; SIFT, sorting intolerant from tolerant; VAF, variant allele frequency.

This is an open access article under the terms of the [Creative Commons Attribution-NonCommercial-NoDerivs](https://creativecommons.org/licenses/by-nc-nd/4.0/) License, which permits use and distribution in any medium, provided the original work is properly cited, the use is non-commercial and no modifications or adaptations are made.

© 2022 The Authors. *Cancer Science* published by John Wiley & Sons Australia, Ltd on behalf of Japanese Cancer Association.

1 | INTRODUCTION

Lineage switch is defined as conversion of leukemic cell lineage on relapse (i.e., AML to ALL, or vice versa), while retaining the same clonal origin. It is a rare phenomenon, occurring in approximately 0.6% of pediatric leukemia cases.¹ Most cases of lineage switch occur in *KMT2A*-rearranged infant leukemia and result in an extremely poor prognosis. However, the underlying mechanism is unknown.

Here, we describe a female infant who presented initially with *KMT2A-MLL3*-rearranged AML; however, at 6 months post-remission, she relapsed with *KMT2A-MLL3*-rearranged ALL. The patient was treated with chemotherapy and hematopoietic stem cell transplantation, by which she achieved complete remission. Whole exome sequencing of the relapse bone marrow sample identified two somatic mutations in *PAX5*, which provides insight into the pathogenesis underlying lineage switch.

The study was approved by the Ethics Committee of Kyoto University and carried out in accordance with the Declaration of Helsinki. The patient's parents provided written informed consent.

2 | METHODS AND RESULTS

2.1 | Case presentation

A female infant born at 38 weeks had a blueberry muffin baby appearance. As previously reported,² extramedullary blast infiltrates were seen in the skin and cerebrospinal fluid. Bone marrow examination led to an initial diagnosis of AML-M5a (Figure 1A,C). *KMT2A-MLL3* gene rearrangement was confirmed by FISH and RT-PCR. The patient was treated according to the standard regimen for AML³ and achieved complete molecular remission. However, at 6 months post-treatment she was readmitted with fever and rapid enlargement of the cervical lymph nodes.

On admission, laboratory blood analyses indicated the following: white blood cell count, 509,640/ μ l; blast cell count, 98.5%; hemoglobin level, 9.8 g/dl; and platelet count, 1.5×10^4 / μ l. Head MRI and cerebral fluid analysis showed no evidence of central nervous system involvement. Bone marrow examination showed monotonous proliferation of small and immature lymphoblasts (Figure 1B). Immunophenotyping by flow cytometry showed that these cells were CD19- and cyCD79-positive, and CD10-partially positive. Morphologic and flow cytometry examination of blast cells suggested a diagnosis of BCP-ALL (Figure 1D). However, *KMT2A-MLL3* rearrangement was also seen in the relapse sample, suggesting that the leukemic blasts had undergone a lineage switch from AML to ALL.

The patient was treated according to the Japanese Pediatric Leukemia/Lymphoma Study Group mixed lineage leukemia (MLL)-10 protocol.⁴ She achieved complete remission after early consolidation therapy, but relapsed again within 1 month. Therefore, she received salvage therapy consisting of clofarabine, etoposide, and

cyclophosphamide.⁵ After one course, the patient reached complete molecular remission. Taking into account the favorable response to clofarabine, she underwent cord blood transplantation using a pre-conditioning regimen consisting of clofarabine (40 mg/m²/day, days -7 to -3) and busulfan (once daily with an area under the receiver operating characteristic curve target of 4000–5000 μ mol*min/L, days -6 to -3). Post-transplant recovery was uneventful, and neutrophil engraftment was achieved on day 19. At 12 months post-transplant, the patient remains in complete molecular remission, with no signs of graft-versus-host disease.

2.2 | Whole exome sequencing

Whole exome sequencing was undertaken on bone marrow samples obtained at initial diagnosis, remission, and the time of lineage switch relapse. The DNA sample obtained at remission was used as a germline control. Genomic DNA was extracted from bone marrow with NucleoSpin Blood (Macherey-Nagel). Sequence alignment to the hg19 human genome and mutation calling were carried out using our in-house pipelines, with minor modifications.⁶ The results revealed nine and 27 exonic variants in the diagnosis and relapse samples, respectively, but no mutations were shared (Table S1). All of these variants were located in the copy number neutral and loss of heterozygosity free portions of the genome. To infer the clonal structures, we clustered each variant by VAF and identified three mutation clusters (Figure 2A) through sciClone (<https://github.com/genome/sciclone>). While the primary samples harbored only subclonal clusters with a paucity of mutations (Cluster 1; VAF range 5.1%–7.0%), the relapse sample harbored a high-VAF cluster (Cluster 2; VAF range 26.9%–54.7%) corresponding to its founding clone, as well as a subclonal cluster (Cluster 3; VAF range 5.3%–19.4%). Of note, Cluster 2 contained two mutations in *PAX5*: a nonsense variant (p.Ser285X) and a missense variant (p.Gly30Lys).

2.3 | RNA sequencing

To investigate the effects of these *PAX5* alterations, we compared the RNA-seq *gene* expression profiles between our samples and the publicly available RNA-seq profiles of 579 childhood ALL and AML cases from the St. Jude Cloud dataset.⁷ RNA was extracted from bone marrow with an RNeasy kit (Qiagen). Sequencing libraries were prepared using NEBNext Ultra II Directional RNA Library Prep Kit for Illumina (New England Biolabs) according to the manufacturer's protocol, and prepared libraries were sequenced with an MGI DNBSSEQ platform. The read count of each annotated *gene* was calculated using the HTSeq package and passed on to the interactive T-distributed stochastic neighbor embedding workflow of St. Jude Cloud (<https://github.com/stjudecloud/expression-classification>). The relapse samples showed a *gene* expression profile closer to the *PAX5*-alt subtype of BCP-ALL⁸ rather

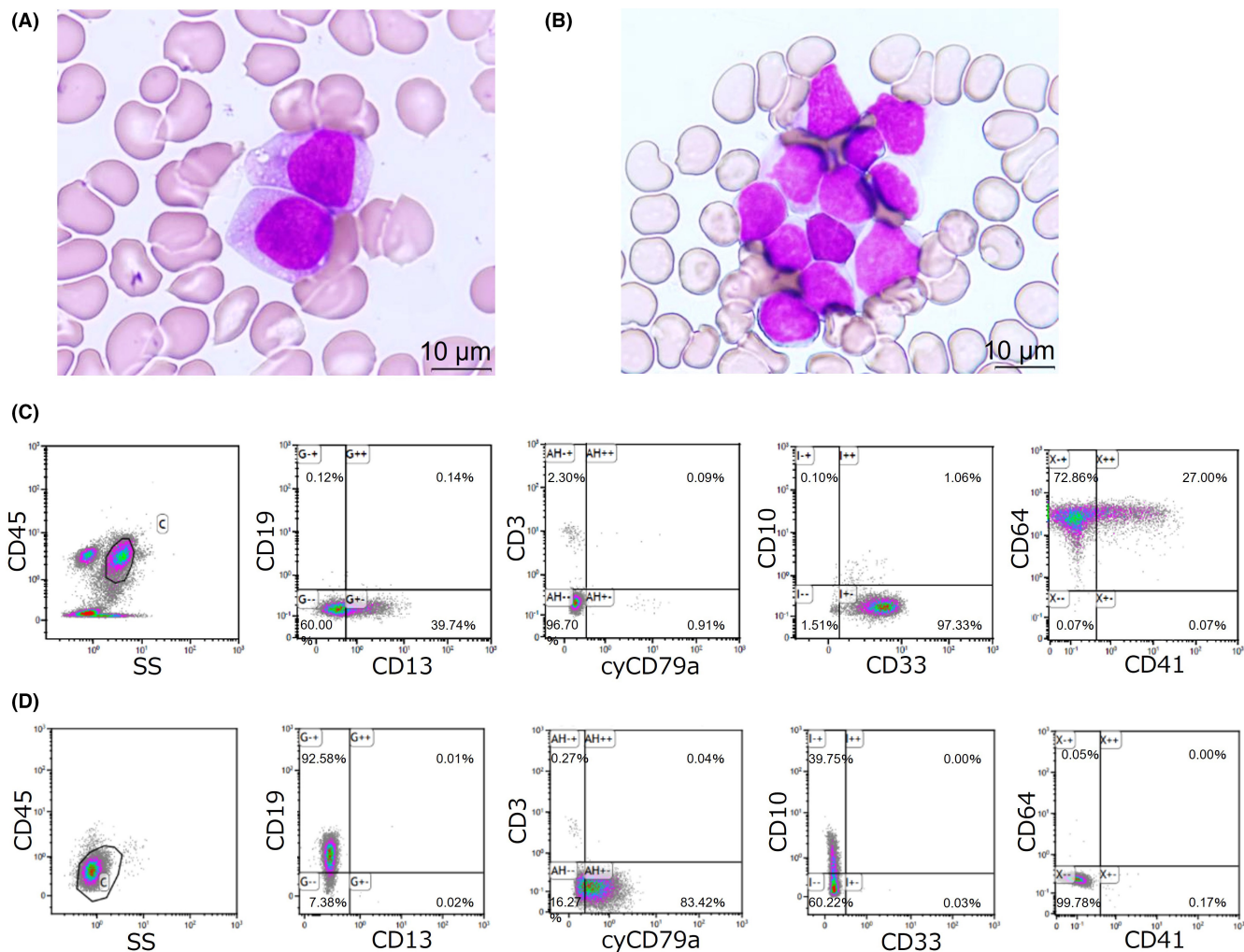


FIGURE 1 Morphological and flow cytometric findings at diagnosis and relapse of *KMT2A*-rearranged leukemia in an infant. (A, B) Evaluation of a bone marrow aspirate of acute monocytic leukemia at initial diagnosis (A) and of precursor B-cell acute lymphoblastic leukemia at relapse (B). (C, D) Flow cytometry revealed that cells were CD33- and CD64-positive, and CD13-partially positive, at initial diagnosis (C), and CD19- and cyCD79-positive, and CD10-partially positive at relapse (D)

than the *KMT2A*-rearranged subtype (Figure 2B). This suggests that the two *PAX5* alterations consistent with biallelic targeting (p.Ser285X and p.Gly30Lys) are driver mutations of equal importance to those found in the *PAX5*-alt BCP-ALL subtype. In addition to DNA mutations, RNA sequencing of the primary sample identified two previously reported fusion transcripts (*SS18L1-ADRM1* and *USP15-MON2*) in addition to *KMT2A-MLL3*, but only *KMT2A-MLL3* was detected in the relapsed samples. Additionally, RNA-seq confirmed that the fusion breakpoints at the exon level of *KMT2A-MLL3* were identical between primary AML and relapse BCP-ALL cells. Thus, the primary and relapsed samples shared only one founder fusion gene, *KMT2A-MLL3*, indicating that the disease relapsed from a preleukemic ancestral clone. The clonal evolution from initial diagnosis to the time of relapse is shown in Figure 2C. Regarding *PAX5* alterations at relapse, we speculate from the VAF values that *PAX5* p.Ser285X was the initial mutation and *PAX5* p.Gly30Lys was acquired subsequently.

3 | DISCUSSION

Lineage switch is a rare event. Indeed, a large cohort of 1482 pediatric leukemia patients contained only nine such cases (0.6%), and only two of the nine were a lineage switch from AML to ALL.¹ Interestingly, eight out of the nine cases were infant leukemia, while seven harbored *KMT2A* gene rearrangement. Given the frequency of lineage switch to *KMT2A*-rearranged infant leukemia, past studies suggest several hypotheses to explain the underlying mechanism. These include the existence of bipotential progenitors, cell reprogramming, dedifferentiation, and clonal selection⁹; however, the precise mechanism has not been identified. The present case study is the first to identify a mutation in *PAX5* in a relapsed clone, suggesting that mutation of the *PAX5* gene could play a driver role in the lineage switch from AML to ALL in *KMT2A*-rearranged infant leukemia.

The *PAX5* gene is a master regulator of B cell development, and its monoallelic mutation is seen frequently in pediatric BCP-ALL.¹⁰

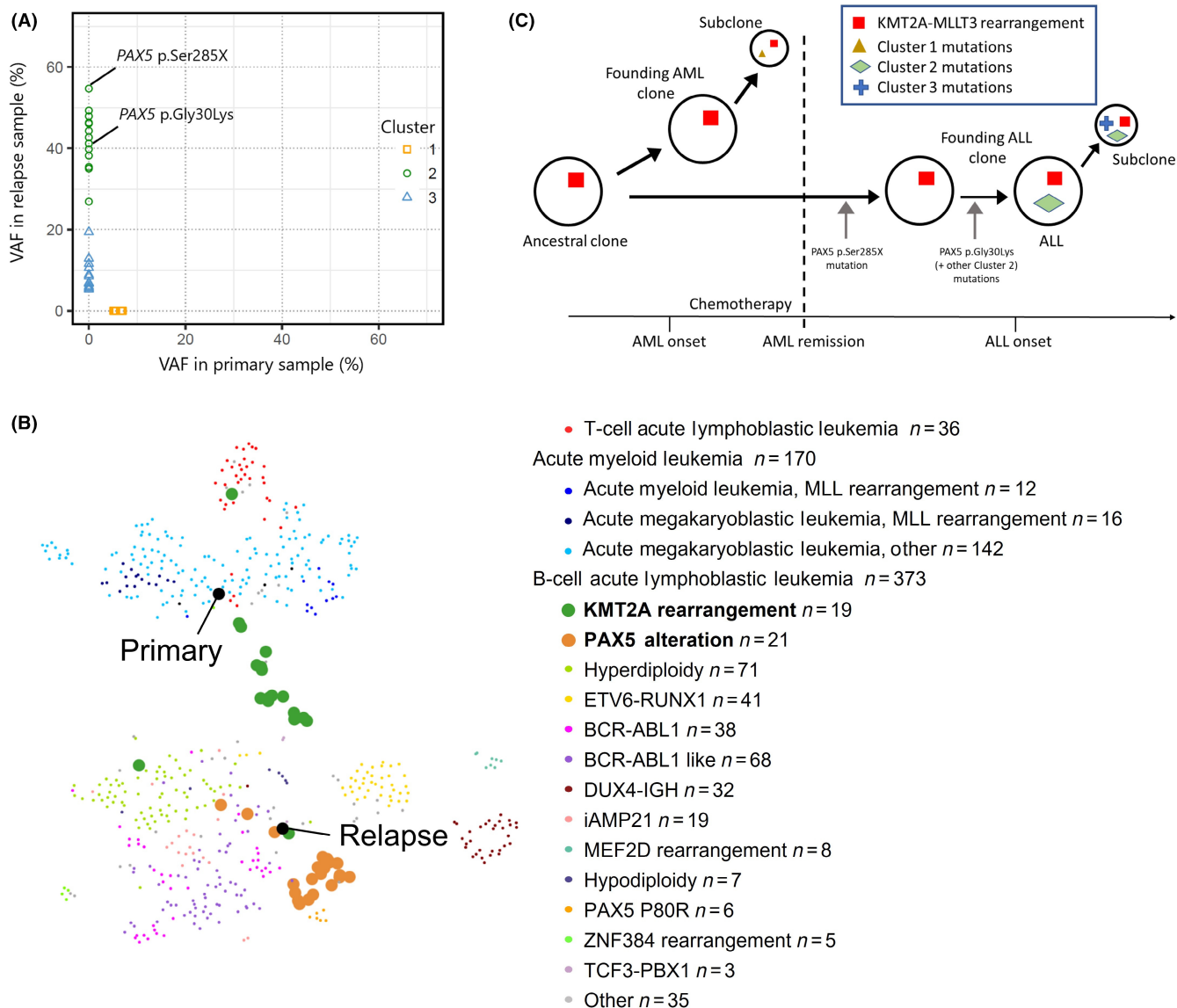


FIGURE 2 Genetic analysis and putative schematic showing clonal evolution of *KMT2A*-rearranged leukemia in an infant. (A) Mutation clusters with each dot denoting a mutation, and different clusters depicted by different colors and dot shapes. Three mutation clusters were identified at diagnosis (variant allele frequency [VAF]; x-axis value) and relapse (VAF; y-axis value). (B) Clustering of RNA sequencing gene expression datasets from our patient and 579 other leukemic samples on a T-distributed stochastic neighbor embedding plot. (C) Putative schematic showing clonal evolution from diagnosis to relapse. ALL, acute lymphoblastic leukemia; AML, acute monocytic leukemia

A recent report identified a subtype of BCP-ALL in which biallelic *PAX5* alterations causing loss of WT *PAX5* expression were suggested to be the driver of acute lymphoblastic leukemogenesis.⁸ The two *PAX5* variants observed in our case were a nonsense variant (p.Ser285X) and a missense variant (p.Gly30Lys). The latter resides in the DNA binding domain of *PAX5*, which is a mutation hotspot associated with loss of *PAX5* function.⁸ Also, the SIFT score was 0.0 for p.Gly30Lys and considered deleterious. Therefore, both *PAX5* alterations in our case are thought to result in biallelic inactivation of *PAX5*. Moreover, the fact that heterozygous deletion of *PAX5* often coincides with *KMT2A-MLL3* ALL,¹¹ whereas *KMT2A-MLL3* itself is more frequently associated with

AML than with ALL,¹² supports the notion that *PAX5* is an important contributor to lineage determination in infant *KMT2A-MLL3* rearranged leukemia.

KMT2A rearrangement in AML is thought to occur in hematopoietic stem cells or myeloid progenitor cells; the former is considered to initiate leukemia more rapidly and is less responsive to chemotherapy.¹³ The clinical course of the patient described herein suggests that *KMT2A* rearrangement occurred at the stem cell level, as discussed in previous reports.^{14,15} Thus, we suggest that *KMT2A-MLL3*-rearranged leukemia initiating cells, which survived after chemotherapy for primary AML, acquired *PAX5* mutations, lead to *PAX5* inactivation, which then induced full-blown BCP-ALL.

In conclusion, the case presented herein provides insight into the mechanism underlying lineage switch in *KMT2A*-rearranged infant leukemia.

ACKNOWLEDGMENTS

The authors would like to thank the patient and families for their cooperation in this study. This work was supported by JSPS KAKENHI Grant Numbers JP19J11112, JP17H04224, JP18K19467, JP20H00528, and JP21K19405; Project for Cancer Research and Therapeutic Evolution (P-CREATE; grant no. JP20cm0106509h9905), and Practical Research for Innovative Cancer Control (grant no. JP19ck0106468h0001 and JP21ck0106531) from Japan Agency for Medical Research and Development (AMED); Princess Takamatsu Cancer Research Fund; The Mother and Child Health Foundation; Japan Leukemia Research Fund.

DISCLOSURE

The authors have no conflict of interest.

APPROVAL OF THE RESEARCH PROTOCOL BY AN INSTITUTIONAL REVIEW BOARD

N/A.

INFORMED CONSENT

The patient's parents provided written informed consent.

REGISTRY AND REGISTRATION NO. OF THE STUDY/TRIAL

N/A.

ANIMAL STUDIES

N/A.

ORCID

Hirohito Kubota  <https://orcid.org/0000-0002-6935-5120>

Itaru Kato  <https://orcid.org/0000-0002-2932-4960>

Kosuke Tamefusa  <https://orcid.org/0000-0002-1675-7038>

Katsutsugu Umeda  <https://orcid.org/0000-0002-6844-2011>

Hidefumi Hiramatsu  <https://orcid.org/0000-0003-3136-5670>

Junko Takita  <https://orcid.org/0000-0002-2452-6520>

REFERENCES

- Rossi JG, Bernasconi AR, Alonso CN, et al. Lineage switch in childhood acute leukemia: an unusual event with poor outcome. *Am J Hematol.* 2012;87:890-897.
- Tamefusa K, Sunada S, Nakata Y, Agawa H, Nishiuchi R. Delayed therapy initiation for a case with congenital leukemia with transient spontaneous regression. *Pediatr Hematol Oncol.* 2022;39(3):286-290.
- Hasegawa D, Tawa A, Tomizawa D, et al. Attempts to optimize postinduction treatment in childhood acute myeloid leukemia without core-binding factors: a report from the Japanese Pediatric Leukemia/Lymphoma Study Group (JPLSG). *Pediatr Blood Cancer.* 2020;67:e28692.
- Tomizawa D, Miyamura T, Imamura T, et al. A risk-stratified therapy for infants with acute lymphoblastic leukemia: a report from the JPLSG MLL-10 trial. *Blood.* 2020;136:1813-1823.
- Miano M, Pistorio A, Putti MC, et al. Clofarabine, cyclophosphamide and etoposide for the treatment of relapsed or resistant acute leukemia in pediatric patients. *Leuk Lymphoma.* 2012;53:1693-1698.
- Seki M, Nishimura R, Yoshida K, et al. Integrated genetic and epigenetic analysis defines novel molecular subgroups in rhabdomyosarcoma. *Nat Commun.* 2015;6:7557.
- McLeod C, Gout AM, Zhou X, et al. St. Jude cloud: a pediatric cancer genomic data-sharing ecosystem. *Cancer Discov.* 2021;11(5):1082-1099.
- Gu Z, Churchman ML, Roberts KG, et al. PAX5-driven subtypes of B-progenitor acute lymphoblastic leukemia. *Nat Genet.* 2019;51:296-307.
- Dorantes-Acosta E, Pelayo R. Lineage switching in acute leukemias: a consequence of stem cell plasticity? *Bone Marrow Res.* 2012;2012:1-18.
- Medvedovic J, Ebert A, Tagoh H, Busslinger M. Pax5: a master regulator of B cell development and leukemogenesis. *Adv Immunol.* 2011;111:179-206.
- Andersson AK, Ma J, Wang J, et al. The landscape of somatic mutations in infant MLL-rearranged acute lymphoblastic leukemias. *Nat Genet.* 2015;47:330-337.
- Meyer C, Burmeister T, Gröger D, et al. The MLL recombinome of acute leukemias in 2017. *Leukemia.* 2018;32:273-284.
- Krivtsov AV, Figueroa ME, Sinha AU, et al. Cell of origin determines clinically relevant subtypes of MLL-rearranged AML. *Leukemia.* 2013;27:852-860.
- Ma X, Edmonson M, Yergeau D, et al. Rise and fall of subclones from diagnosis to relapse in pediatric B-acute lymphoblastic leukaemia. *Nat Commun.* 2015;6:1-12.
- Mullighan CG, Phillips LA, Su X, et al. Genomic analysis of the clonal origins of relapsed acute lymphoblastic leukemia. *Science.* 2008;322:1377-1380.

SUPPORTING INFORMATION

Additional supporting information may be found in the online version of the article at the publisher's website.

How to cite this article: Nakajima K, Kubota H, Kato I, et al. PAX5 alterations in an infant case of *KMT2A*-rearranged leukemia with lineage switch. *Cancer Sci.* 2022;113:2472-2476. doi:[10.1111/cas.15380](https://doi.org/10.1111/cas.15380)