

## EXTENDED REPORT

# Comparison of health-related quality of life in rheumatoid arthritis, psoriatic arthritis and psoriasis and effects of etanercept treatment

Vibeke Strand,<sup>1</sup> Veronika Sharp,<sup>2</sup> Andrew S Koenig,<sup>3</sup> Grace Park,<sup>4</sup> Yifei Shi,<sup>4</sup> Brian Wang,<sup>5</sup> Debra J Zack,<sup>6</sup> David Fiorentino<sup>7</sup>

► An additional supplementary figure is published online only. To view this file please visit the journal online (<http://ard.bmj.com/content/71/7.toc>).

<sup>1</sup>Division of Immunology and Rheumatology, Stanford University, Palo Alto, California, USA

<sup>2</sup>Division of Rheumatology, Department of Medicine, Santa Clara Valley Medical Center, San Jose, California, USA

<sup>3</sup>Inflammation and Immunology, Pfizer Inc, Collegeville, Pennsylvania, USA

<sup>4</sup>Global Biostatistical Science, Amgen Inc, Thousand Oaks, California, USA

<sup>5</sup>Department of Biostatistics, KForce Clinical Research, Tampa, Florida, USA

<sup>6</sup>General Medicine and Inflammation Therapeutic Area, Amgen Inc, Thousand Oaks, California, USA

<sup>7</sup>Department of Dermatology, Stanford University, Palo Alto, California, USA

## Correspondence to

Vibeke Strand, Division of Immunology/Rheumatology, Stanford University, 306 Ramona Road, Portola Valley, CA 94028, USA; [vstrand@stanford.edu](mailto:vstrand@stanford.edu)

Received 30 June 2011

Accepted 7 December 2011

Published Online First

17 January 2012



This paper is freely available online under the BMJ Journals unlocked scheme, see <http://ard.bmj.com/info/unlocked.dtl>

## ABSTRACT

**Objectives** To compare health-related quality of life (HRQoL) before and after treatment with etanercept in patients with moderate to severe rheumatoid arthritis (RA), psoriatic arthritis (PsA) and psoriasis using spydergram representations.

**Methods** Data from randomised, controlled trials of etanercept in patients with RA, PsA and psoriasis were analysed. HRQoL was assessed by the medical outcomes survey short form 36 (SF-36) physical (PCS) and mental (MCS) component summary and domain scores. Baseline comparisons with age and gender-matched norms and treatment-associated changes in domain scores were quantified using spydergrams and the health utility SF-6D measure.

**Results** Mean baseline PCS scores were lower than age and gender-matched norms in patients with RA and PsA, but near normative values in patients with psoriasis; MCS scores at baseline were near normal in PsA and psoriasis but low in RA. Treatment with etanercept resulted in improvements in PCS and MCS scores as well as individual SF-36 domains across all indications. Mean baseline SF-6D scores were higher in psoriasis than in RA or PsA; clinically meaningful improvements in SF-6D were observed in all three patient populations following treatment with etanercept.

**Conclusions** Patients with RA, PsA and psoriasis demonstrated unique HRQoL profiles at baseline. Treatment with etanercept was associated with improvements in PCS and MCS scores as well as individual domain scores in patients with RA, PsA and psoriasis.

Health-related quality of life (HRQoL) has been shown to be profoundly impaired in patients with bone and joint diseases, including rheumatoid arthritis (RA)<sup>1</sup> and psoriatic arthritis (PsA).<sup>2–5</sup> HRQoL is also impaired in psoriasis but to a different degree, as reflected by changes in the dermatology life quality index and the Euro-QoL.<sup>6–12</sup> A prominent benefit of treatment with tumour necrosis factor (TNF) antagonists in patients with these diseases has been an improvement in patient-reported outcomes, including HRQoL.<sup>1 12–22</sup>

The medical outcomes survey short form 36 (SF-36) is a generic patient-reported measure of HRQoL that has been validated for use in most rheumatic diseases, including RA<sup>1 23</sup> and PsA<sup>24 25</sup> as well as psoriasis.<sup>26 27</sup> It includes 36 questions

combined into eight domains, which are summarised into physical component (PCS) and mental component (MCS) summary scores.<sup>1</sup> SF-6D is a health utility score based on mean scores across all eight domains of the SF-36, which has been demonstrated to be sensitive to change in rheumatic diseases.<sup>1 28–30</sup> Importantly, SF-6D facilitates comparisons of baseline values and post-treatment changes in HRQoL.

The presentation and interpretation of HRQoL data from SF-36 is complex, and the impact of patterns of disease and treatment-associated effects can be difficult to evaluate. ‘Spydergrams’ provide an intuitive visual method to examine multiple domains of HRQoL simultaneously in a single figure.<sup>30</sup> The objectives of this study were to use spydergrams to compare the impact on HRQoL of three different immune-mediated diseases, specifically in terms of how each disease differentially affects aspects of mental and physical wellbeing, and to use spydergrams to determine how etanercept therapy impacts changes in domains of the SF-36 across these diseases.

## Methods

Data for these analyses were obtained from randomised controlled trials that have been published previously on patients with early RA (combination of methotrexate and etanercept in early RA; COMET),<sup>31–33</sup> PsA (Study 160030)<sup>34</sup> and psoriasis (Study 160042).<sup>17</sup> Patients in COMET with early moderate to severe RA for a mean of 9 months were randomly assigned to receive etanercept (50 mg a week) in combination with methotrexate or methotrexate alone for 52 weeks.<sup>31</sup> Patients with PsA for a mean of approximately 9 years were randomly assigned to receive etanercept (25 mg twice a week) or placebo for 24 weeks in Study 160030.<sup>34</sup> Patients with active, clinically stable plaque psoriasis for a mean of 20.5 years in Study 160042 were randomly assigned to treatment with etanercept 25 mg twice a week or 50 mg twice a week or placebo for 12 weeks (randomised controlled trial portion of the trial).<sup>17</sup> Patients in all arms of the psoriasis study received etanercept 25 mg twice a week open label for weeks 13–24.

In all studies, patients completed SF-36 questionnaires at baseline (before treatment) and at various protocol-specified times during treatment. The eight domains of SF-36 (see supplementary figure S1,

available online only) include: limitations in physical activities because of health problems (physical function (PF)); limitations in usual role activities because of physical health problems (role physical (RP)); bodily pain (BP); general health perceptions (GH); vitality (VT); limitations in social activities because of physical or emotional problems (social functioning (SF)); limitations in usual role activities because of emotional problems (role emotional (RE)); and psychological distress and wellbeing (mental health index (MH)), scored from 0 (worst) to 100 (best).<sup>35</sup> Domain scores were normalised and z-transformed into PCS and MCS summary scores. PCS positively weights five domains (PF, RP, BP, GH and VT) and negatively weights the remaining three domains (SF, RE and MH); MCS positively weights the four mental domains (VT, SF, RE and MH) and negatively weights the four physical domains (PF, RP, BP and GH). The normative value for the PCS or MCS summary score is 50 with a SD of 10.<sup>1</sup>

SF-6D estimates health utilities from SF-36 data to derive a single index score that ranges from 0 (death) to 1 (full health). SF-6D was initially based on individual patient data using answers to 11 items from the SF-36 questionnaire.<sup>36</sup> SF-6D has recently been calculated based on group data using mean changes in each of the eight domains.<sup>28,29</sup> This SF-6D calculation

has been validated in RA and other rheumatic diseases with a minimally important difference (MID) of 0.041.<sup>29</sup>

The PCS and MCS component scores of SF-36 were initially assessed in each of the clinical trials and if the results of either were statistically significant, mean changes in domains were assessed for statistical significance without p value corrections, as customary, and for improvements meeting or exceeding the minimum clinically important difference (MCID) of 5–10 points for domain scores and 2.5–5 points for PCS and MCS scores.<sup>1</sup> These MCID values (which were established for RA patients) apply similarly to PsA and psoriasis.<sup>37,38</sup> Similarly, MCID values have been estimated in psoriasis for PCS (0.51–3.91, best estimate at 2.5) and MCS (3.89–6.61), which are in the range of the defined MCID we utilised.<sup>39</sup> SF-6D MID was calculated based on the derivation by Ara and Brazier,<sup>28,29</sup> recent data also indicate that MID for RA and PsA are similar for the SF-6D.<sup>40</sup>

Baseline and treatment-associated improvements were quantified across all eight domains using spydergrams and health utility measure SF-6D. To generate the spydergrams, domain scores were plotted from 0 (worst) at the centre to 100 (best) at the outer edge. Demarcations along each axis/domain represent changes of 10 points, an estimated one to two times the MCID.<sup>30</sup> Baseline and endpoint domain scores in each study were compared with age and gender-matched normative SF-36 data from the USA.<sup>41</sup>

**Table 1** Patient demographics and disease characteristics at baseline

	RA (N = 528)	PsA (N = 205)	Psoriasis (N=583)
Sex, n (%)			
Men	141 (27)	105 (51)	382 (66)
Women	387 (73)	100 (49)	201 (34)
Age, mean years (SD)	51.4 (0.6)*	47.4 (11.1)	45.2 (11.9)
Range	18–84	18–76	18–87
Race/ethnicity, n (%)			
White	463 (88)	186 (91)	528 (91)
Black/African-American	6 (1)	5 (2)	8 (1)
Hispanic/Latino	27 (5)	11 (5)	19 (3)
Other	32 (6)	3 (2)	28 (5)
Disease duration, mean			
RA	9.0 mos	–	–
PsA	–	9.1 yrs	–
Psoriasis	–	19.0 yrs	20.5 yrs
Previous therapies			
n (%) DMARD	113 (21)	156 (76)	–
Psoriasis therapies	–	147 (72)	516 (89)
Disease characteristics			
Tender joint count, mean no (SD)	25.0 (14.5)†	21.3 (14.3)‡	–
Swollen joint count, mean no (SD)	17.3 (10.2)§	15.6 (10.6)**	–
PASI score, †† mean (SD)	–	10.4 (10.7)‡‡	19.1 (8.5)
Psoriasis-affected BSA, mean % (SD)	–	10.6 (15.4)	28.0 (17.4)
Patient-reported outcomes			
HAQ, §§ mean score (SD)	1.7 (0.7)	1.1 (0.6)	–
DLQI, ¶¶ mean score (SD)	–	–	11.7 (6.8)

\*Data represent mean (standard error) for patients with RA.

†71 possible joints.

‡78 possible joints.

§68 possible joints.

\*\*76 possible joints.

††PASI scores range from 0 (no psoriasis) to 72 (severe disease).

‡‡PASI scores were only collected from psoriasis patients with affected BSA ≥3% (n=128).

§§HAQ scores range from 0 to 3.

¶¶DLQI scores range from 0 (no effect on patient's life) to 30 (extremely large effect on patient's life).

BSA, body surface area; DLQI, dermatology life quality index; DMARD, disease-modifying antirheumatic drug; HAQ, health assessment questionnaire; PASI, psoriasis area and severity index; PsA, psoriatic arthritis; RA, rheumatoid arthritis.

## Results

Data for these analyses were obtained from 528 patients with RA, 205 patients with PsA and 583 patients with psoriasis (table 1). The majority of patients in all trials were white, most patients with RA were women, and most patients with psoriasis were men. All patients in the PsA trial also had psoriasis.

In RA patients enrolled in COMET, baseline PCS scores were low, approaching 2 SD below normative values of 50; MCS scores were more than 0.5 SD less than norms (table 2). After 52 weeks of treatment, improvement in the PCS score was greater with the etanercept plus methotrexate combination therapy than with methotrexate alone (p=0.0031). Improvements in MCS with both treatments were large, exceeded the MCID, and approached normative values.

Large reductions in domain scores were reported by RA patients at baseline and were largest in RP and BP (figure 1A,B). After 52 weeks of treatment, statistically significant (p<0.0001) and clinically meaningful improvements (≥MCID) across all domains were evident with both treatments. Greatest improvements were seen in both treatment groups in domains with the lowest scores at baseline: RP (improvements of 46.5 vs 40.8 points in the etanercept plus methotrexate vs methotrexate arms), BP (37.2 vs 29.6 points) and RE (32.7 vs 25.9 points). Etanercept plus methotrexate therapy was associated with greater improvements in PF, BP and VT domains compared with methotrexate therapy alone (figure 1C).

Mean SF-6D scores in patients with RA at baseline (0.529) were considerably lower than age and gender-matched norms (0.822). Clinically meaningful improvements (≥MID) were observed in SF-6D scores in patients receiving etanercept plus methotrexate (mean score 0.658) and methotrexate alone (mean score 0.635). Improvements in SF-6D scores were significantly greater in patients receiving etanercept plus methotrexate compared with methotrexate alone (p=0.05).

In patients with PsA enrolled in Study 160030, baseline PCS scores were low in all patients, approaching 1.5 SD below the normative value of 50 (table 2). MCS scores approximated

**Table 2** Mean baseline and post-treatment SF-36 PCS and MCS scores and SF-6D scores across trials

	RA		PsA		Psoriasis					
	ETN + MTX	MTX	ETN	Placebo	Weeks 1–12			Weeks 13–24 (ETN 25 mg)*		
					ETN 25 mg	ETN 50 mg	Placebo	ETN 25 mg	ETN 50 mg	Placebo
<b>PCS</b>										
Baseline	29.3	29.5	33.6	33.4	49.5	48.8	49.0	–	–	–
Endpoint	43.0	40.2	43.4	34.7	52.8	52.7	49.6	52.9	52.5	52.0
Mean change	13.8†	10.9†	9.7†	1.5	3.3†	3.9†	0.7	3.4†	3.7†	3.1†
p Value‡	0.003	NS	0.001	NS	<0.0001	<0.0001	NS			
<b>MCS</b>										
Baseline	42.1	42.2	51.5	49.3	48.4	47.2	46.1	–	–	–
Endpoint	48.9	48.3	54.1	50.3	51.0	50.6	46.5	51.1	51.4	49.1
Mean change	6.9†	5.8†	2.6†	0.8	2.6†	3.4†	0.3	2.7†	4.2†	3.0†
p Value‡	NS	NS	0.040	NS	<0.0001	<0.0001	NS			
<b>SF-6D</b>										
Baseline	0.530	0.528	0.660	0.642	0.754	0.734	0.728	–	–	–
Endpoint	0.658	0.635	0.767	0.659	0.819	0.822	0.739	0.822	0.821	0.808
Mean change	0.128	0.121	0.105	0.018	0.065	0.084	0.011	0.066	0.083	0.077
p Value‡	<0.0001	<0.0001	<0.0001	0.079	<0.0001	<0.0001	0.285			

\*All patients received etanercept 25 mg twice a week during weeks 13–24, column headers represent original treatment assignment, p values are comparisons with week 12 values.

†Changes were greater than or equal to the minimal clinically important difference (MCID).

‡p Value for change from baseline.

ETN, etanercept; MCS, mental component summary; MTX, methotrexate; NS, not significant; PCS, physical component summary; PsA, psoriatic arthritis; RA, rheumatoid arthritis; SF-36, short form 36; SF-6D, health utility score based on mean scores across all eight domains of the SF-36.

normative values. After 24 weeks of treatment, patients receiving etanercept reported statistically significant and clinically meaningful improvements in both PCS (to within 0.5 SD of norms) and MCS (exceeding normative values) scores from baseline. Significant improvements were not reported by patients receiving placebo.

Large reductions were reported in all domains of the SF-36 at baseline in patients with PsA (figure 2A,B); the most severely impacted domains were RP, BP and VT. After 24 weeks of treatment, statistically significant and clinically meaningful improvements in all domains were reported by patients receiving etanercept ( $p < 0.0001$  for all domains except RE,  $p = 0.004$ ); the greatest improvements were in the physical domains RP (25.8 points), BP (23.4 points) and PF (20.4 points). Patients receiving placebo reported statistically significant and clinically meaningful improvements in PF (4.2 points), BP (5.8 points), VT (4.5 points) and SF (5.6 points). Etanercept therapy was associated with greater improvements across all domains compared with placebo (figure 2C).

Mean SF-6D scores in patients with PsA (0.651) were considerably lower than age and gender-matched norms (0.848). After 24 weeks of treatment, clinically meaningful improvements in SF-6D scores were reported by patients receiving etanercept (mean score 0.767) but not placebo (mean score 0.659).

In patients with psoriasis enrolled in Study 160042, baseline PCS scores were high in all patients and approximated normative values of 50; MCS scores were within less than 0.5 SD of norms (table 2). After 12 weeks of treatment, statistically significant improvements in both PCS and MCS scores were observed in patients receiving etanercept at both doses ( $p < 0.0001$ ) but not in patients receiving placebo. Despite high baseline values, treatment-associated improvements in PCS and MCS scores exceeded MCID and resulted in final scores that exceeded normative values. During weeks 13–24 of the study, when all patients received open-label etanercept at 25 mg twice a week, patients who had received etanercept during weeks 1–12 maintained their improvements in PCS and MCS scores, even in the treatment arm in which the dosage was reduced from 50 mg

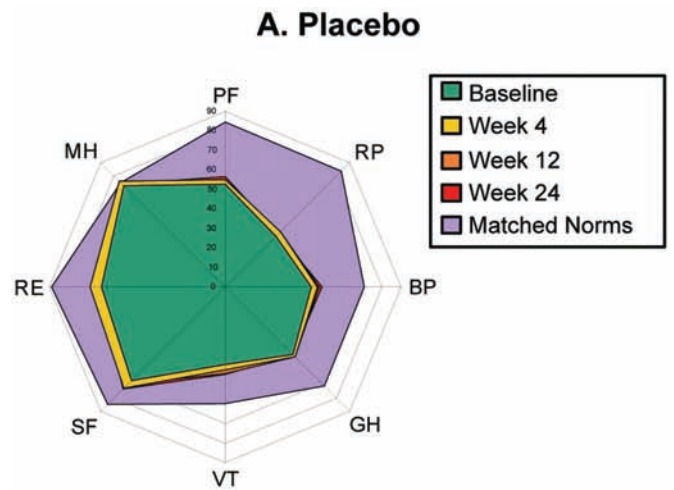
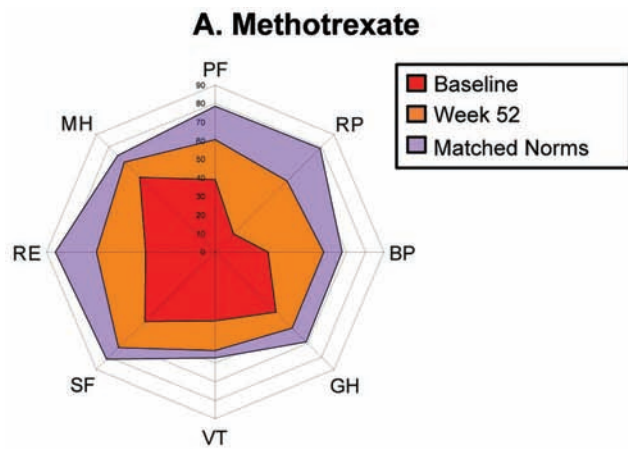
twice a week in the first 12 weeks to 25 mg twice a week for the open-label phase of the trial. Patients who initially received placebo reported clinically meaningful improvements in both PCS and MCS after 12 weeks of receiving open-label etanercept.

Overall, patients with psoriasis reported lower reductions in physical and mental domains of SF-36 than patients with RA or PsA, and baseline SF-36 domain scores approximated normal values in most domains (figure 3A–C). The lowest scores were in the BP, GH, VT and MH domains. Despite high values at baseline, after 12 weeks of treatment, improvements were reported in all domains and clinically meaningful improvements were reported in all domains except GH in patients receiving etanercept at either dose. In both active treatment groups, the largest mean changes were reported in BP (14.6 points and 16.5 points for etanercept 25 mg twice a week and 50 mg twice a week, respectively), SF (8.9 points and 13.8 points), RP (9.8 points and 13.1 points) and RE (10.5 points and 10.4 points) domains. No statistically significant or clinically meaningful changes were reported in patients receiving placebo. During the open-label phase of the trial, patients who had initially received etanercept at either dose maintained their improvements and patients who initially received placebo achieved clinically meaningful improvements in all domains but PF and GH (figure 3D–F).

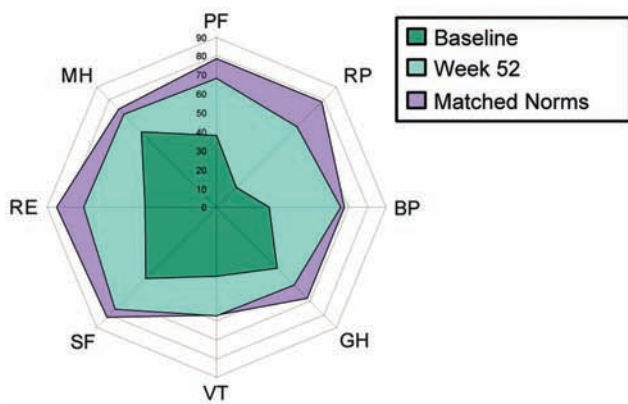
The mean baseline SF-6D score was higher in patients with psoriasis (0.739) than in patients with RA or PsA, but was still less than age and gender-matched norms (0.854). Clinically meaningful improvements ( $\geq$ MCID) were observed in patients receiving active treatment but not in patients receiving placebo; in addition, during the open-label phase of the trial, improvements were also reported in patients initially treated with placebo (table 2).

## Discussion

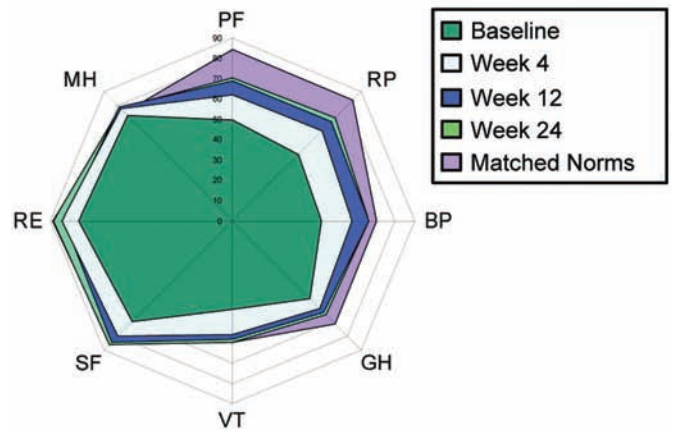
Our data confirm that HRQoL is much diminished in patients with PsA and RA compared with age and gender-matched norms. A very interesting observation from these data is that the baseline patterns of HRQoL reductions appear to be different in each disease, as illustrated by the spidergrams. Patients



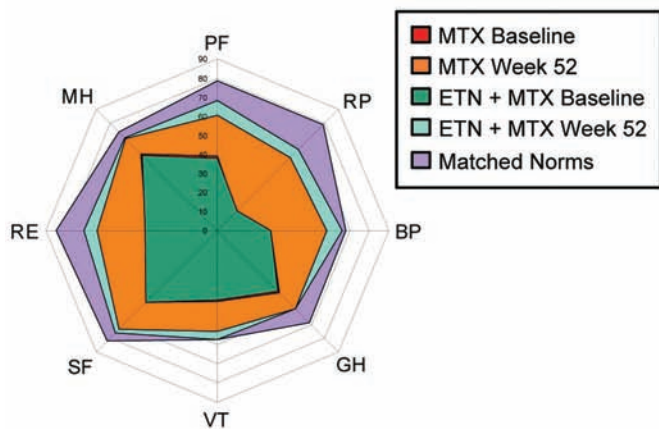
**B. Etanercept + Methotrexate**



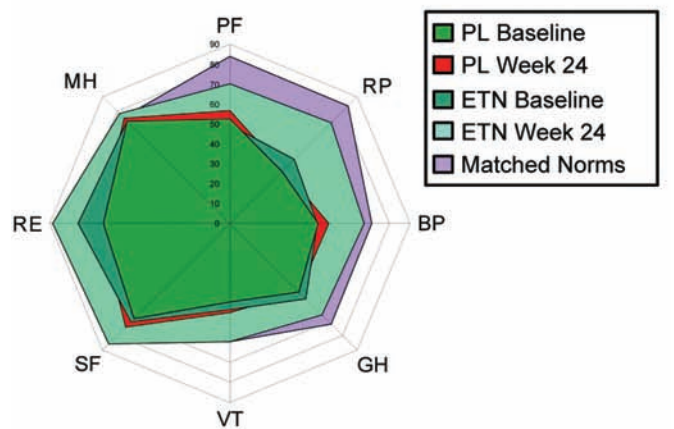
**B. Etanercept**



**C. Methotrexate vs Etanercept + Methotrexate**



**C. Placebo vs Etanercept**

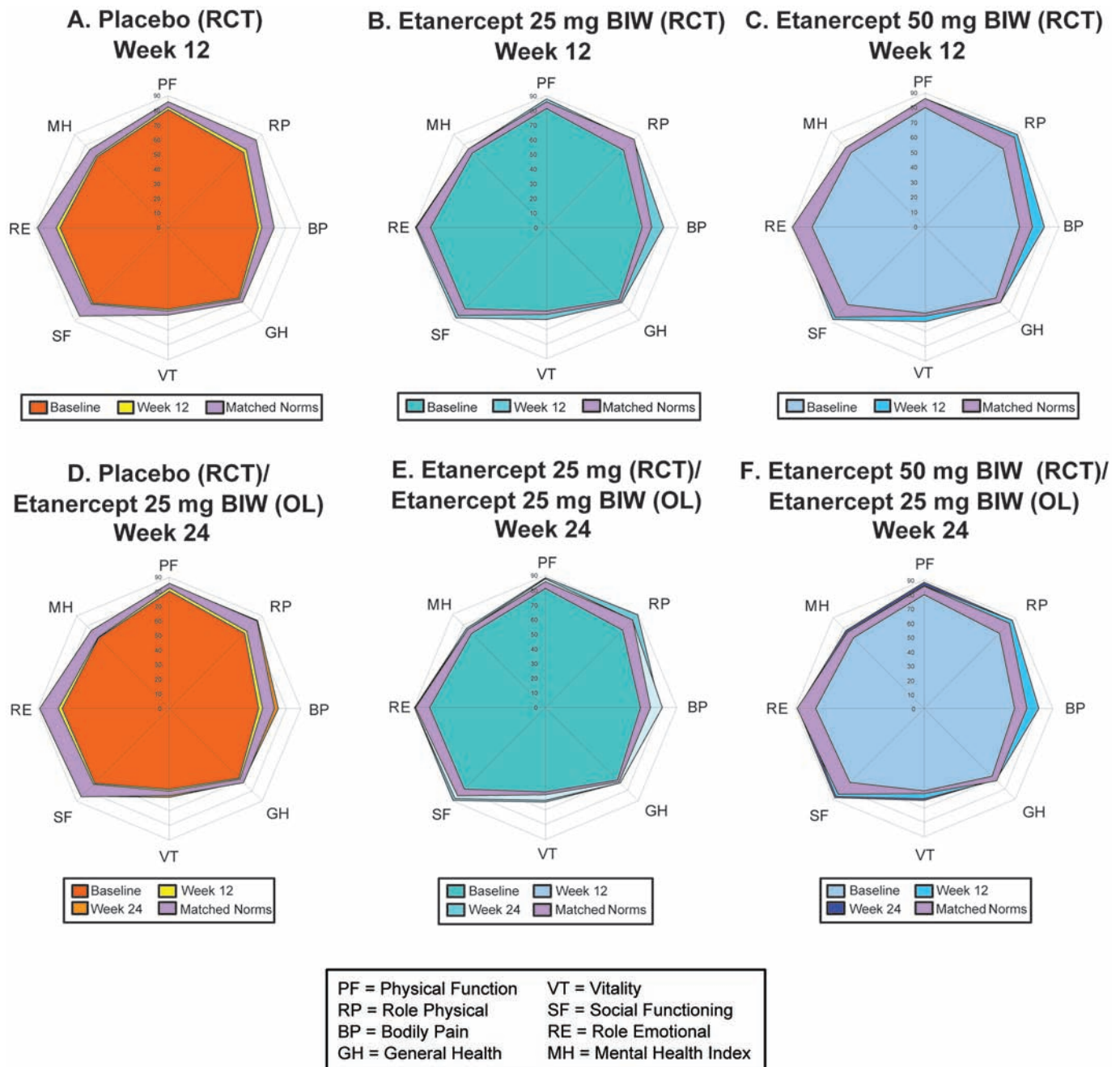


**Figure 1** Short form 36 (SF-36) spidergrams for patients with rheumatoid arthritis. Mean SF-36 scores at baseline and week 52 and age and gender-matched norms are shown for patients receiving (A) methotrexate or (B) etanercept plus methotrexate. (C) Mean SF-36 scores at baseline and week 52 for patients treated with methotrexate or etanercept plus methotrexate are compared. Mean SF-36 scores for age and gender-matched norms are also shown. BP, bodily pain; ETN, etanercept; GH, general health; MH, mental health; MTX, methotrexate; PF, physical function; RE, role emotional; RP, role physical; SF, social functioning; VT, vitality.

**Figure 2** Short form 36 (SF-36) spidergrams for patients with psoriatic arthritis. Mean SF-36 scores at baseline and weeks 4, 12 and 24, and age and gender-matched norms are shown for patients receiving (A) placebo or (B) etanercept. (C) Mean SF-36 scores at baseline and week 24 for patients treated with placebo or etanercept are compared. Mean SF-36 scores for age and gender-matched norms are also shown. BP, bodily pain; ETN, etanercept; GH, general health; MH, mental health; PF, physical function; PL, placebo; RE, role emotional; RP, role physical; SF, social functioning; VT, vitality.

with arthritis (either RA or PsA) reported an impact of disease on physical function (RP and PF domains), pain (BP) and fatigue (VT). These further affect emotional and social functioning

(RE and SF domains) in RA. In contrast, psoriasis has a relatively greater impact on mental rather than physical domains, as patients with psoriasis report the effect of their disease on



**Figure 3** Short form 36 (SF-36) spidergrams for patients with psoriasis. Mean SF-36 scores at baseline and week 12 of the randomised controlled trial (RCT) portion of the clinical trial and age and gender-matched norms are shown for patients receiving (A) placebo, (B) etanercept 25 mg twice a week (BIW), or (C) etanercept 50 mg twice a week. Mean SF-36 scores at baseline and weeks 12 and 24 of the open-label (OL) portion of the trial (when all patients received etanercept 25 mg twice a week) are shown for patients who had received (D) placebo, (E) etanercept 25 mg twice a week, or (F) etanercept 50 mg twice a week during the RCT portion of the trial. Mean SF-36 scores for age and gender-matched norms are also shown.

social functioning (RE and SF), and to a lesser degree on physical function (RP) and pain (BP) domains. This is consistent with data obtained from large clinical trials in psoriasis. This suggests that the impact of physical wellbeing on mental health might well depend on the nature of the physical impairment (eg, skin versus joint), as skin disease may have a disproportionately large effect on mental function and ensuing quality of life. Another explanation for the apparently small diminution in physical domains in psoriasis is that the SF-36 is not a particularly sensitive measure of skin disease in psoriasis—although changes in the physical domains correlate with changes in

objective measures of disease, relatively large changes in skin disease are required in order to register a change in the SF-36 physical domain scores in psoriasis.<sup>19,42</sup> In addition, comparison of all diseases by spidergrams reveals characteristic ‘notches’ in domains for a given disease. These domain deficits unique to a particular disease should focus future research on the variables associated with these changes and how these might be more effectively addressed. A limitation in comparing HRQoL across diseases includes the duration of disease in the populations in these analyses; the mean duration of disease at baseline was 9 months, 9 years and approximately 20 years for patients

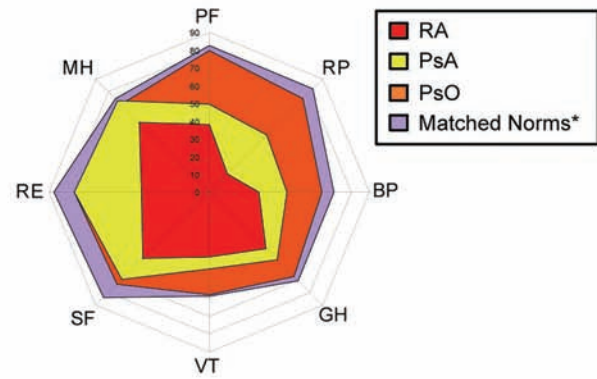
with RA, PsA and psoriasis, respectively, with broad ranges. Clearly, this variability may have a significant impact on perceptions of disease and therefore HRQoL reported before and after treatment.

Because the age and gender-matched norms were very similar to one another in all three diseases, we were able to compare all baseline SF-36 domain scores in one spidergram (figure 4). The magnitude of reduction in disease compared with age and gender-matched normative values in domain scores was greatest in RA followed by PsA, and of overall lesser magnitude in psoriasis. While the physical health domain scores were much lower in PsA than in psoriasis, mental health domain scores were very similar in the two diseases except for VT, which was substantially lower in PsA. This is consistent with the theory that much of the negative mental impact in PsA is caused by skin disease.<sup>43</sup> Given that reports in the literature support the connection between educational status and negative mental impact of disease in arthritis, this might have implications for educational interventions to prevent the same negative mental impacts in psoriasis.

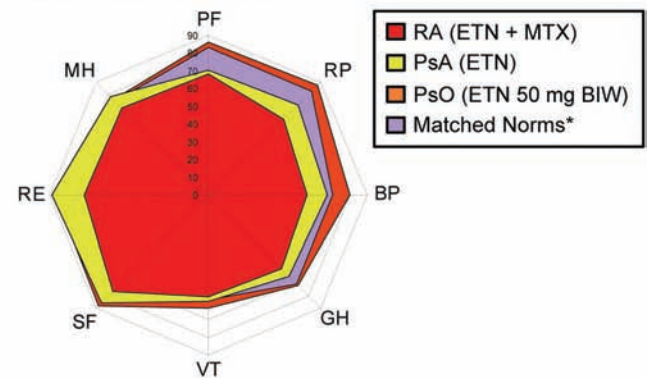
While it is easy to understand the diminished social and emotional functioning in arthritis (RA and PsA) caused by physical limitation and pain, it may be difficult immediately to rationalise why patients with psoriasis have diminished physical health. However, pain and itching from skin disease are known to result in inability to function in the workplace, use one's hands (as palm involvement is common in psoriasis), and can result in sleep disturbances that characterise psoriasis and result in inability to participate in various physical activities related to work or leisure. In addition, it is known that psychological comorbidities such as depression and anxiety are associated with psoriasis. Our data suggest that the physical and mental domains of HRQoL are connected. Diminished mental health in psoriasis may result from concern over the appearance of the psoriatic skin, leading to anxiety, a sense of stigmatisation and embarrassment, reduction in participation in work and leisure activities and diminishment of a patient's psychological wellbeing. The mental and physical domains in psoriasis might also be uniquely connected by bodily pain. BP is consistently found to be among the most affected physical domains in psoriasis, which is likely to be due to skin pain from psoriatic plaques, as objective measures of skin disease tend to correlate well with the BP subscale.<sup>4</sup> Pain and itching of the skin can cause both emotional and physical distress. Physical health may be affected by the itching and burning sensation of the skin and by joint pain in those with concomitant arthritis.<sup>9 12</sup> Interestingly, depression also impacts BP in psoriasis.<sup>21</sup> In addition, skin pain (and itching) probably contributes to sleep disturbance, which is an important component of mental HRQoL in psoriasis. Sleep disturbance could directly contribute to fatigue and social function. BP has often been seen to be prone to greatest improvements of all SF-36 domains following therapy in psoriasis patients, and this is consistent with our data.<sup>20</sup> It is of note that this improvement has been seen with a number of therapies, including anti-TNF therapies, ustekinumab (which targets interleukins 12 and 23)<sup>42</sup> and efalizumab (which targets CD11a).<sup>44</sup> It has also recently been shown that depression impacts heavily on the BP domain in psoriasis,<sup>21</sup> and this may be more uniquely associated with psoriasis than with RA or PsA.

Following treatment with etanercept, the largest improvements were seen in physical domains as well as RE in RA patients. In patients with psoriasis, despite potential ceiling effects, treatment-associated changes could still be demonstrated. Our findings were similar to those of Revicki *et al*<sup>12</sup> but

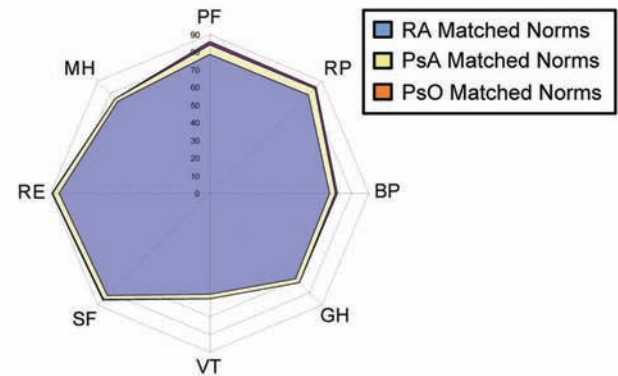
**A. Baseline RA, PsA, and PsO**



**B. Endpoint Values for RA vs PsA vs PsO**



**C. Matched Norms for RA, PsA, and PsO at Baseline**



\*Age- and gender-matched norms for etanercept-treated patients averaged across all indications

**Figure 4** Comparison of health-related quality of life (HRQoL) across indications. (A) Mean short form 36 (SF-36) scores for patients with rheumatoid arthritis (RA), psoriatic arthritis (PsA), or psoriasis (PsO) at baseline and average age and gender-matched norms for all indications are shown. (B) Mean SF-36 values at endpoint are shown for patients with RA (etanercept (ETN) plus methotrexate (MTX)-treated patients at week 52), PsA (etanercept-treated patients at week 24), and psoriasis (etanercept 50 mg twice a week (BIW)-treated patients at week 12) with average age and gender-matched norms for all indications. (C) Mean SF-36 scores at baseline for age and gender-matched norms are shown.

differ from some earlier studies in which the control population was not appropriately matched to the study group. For some domains (eg, BP), post-treatment values actually exceeded those of the age-matched controls, suggesting that some aspects of

chronic skin disease/pain might extinguish other pain stimuli to some degree so that when treated, patients actually feel less pain than norms.

A unique aspect of the SF-36 is that lower domain scores represent worse disease. This paper demonstrates that these lower domain scores are often associated with the largest treatment-associated changes towards improvement. The use of spidergrams made this evident, as treatment was associated with loss of 'notching' and more even 'rounding' of the spidergram patterns for both RA and PsA (compare figure 4A,B). In contrast, improvements are less easily demonstrated using the health assessment questionnaire disability index that also assesses physical function probably because higher scores indicate worse outcome. In addition, SF-36 data are normalised; this scoring method inherently leads to fewer floor (or ceiling) effects, as is evident in both RA and PsA datasets.

SF-6D scores are a means for quantifying changes illustrated in the spidergrams. As in patients with RA and PsA, SF-36 is a useful tool for assessing HRQoL in patients with psoriasis. Questions in the SF-36 may be less sensitive to the impact of skin disease in the absence of arthritis; however, statistically significant and clinically meaningful treatment-associated improvements were demonstrated in psoriasis patients. Furthermore, our results illustrated less potential for 'ceiling effects' with this instrument, as reflected in improvements that exceeded normative values even with high domain scores at baseline as in psoriasis.

Several domains from SF-36, a generic HRQoL assessment tool, have been shown to correspond with items from disease-specific tools, such as the dermatology life quality index for psoriasis<sup>26 38 39</sup> and the health assessment questionnaire for RA<sup>45 46</sup> and PsA.<sup>37</sup> In both research and clinical settings, visual representation of SF-36 data in spidergram format would be most useful for measuring improvements or changes in response to treatment in a cohort of patients. In clinical practice, spidergrams would also be useful for routine monitoring of the mental domains of HRQoL. In addition to normal physical examinations of joints and/or skin, patient-reported information from SF-36 would complement physical findings to provide the clinician with a more comprehensive evaluation of each patient.

## Conclusions

In this study we directly compared HRQoL in patients with RA, PsA and psoriasis and showed that each disease had a unique profile among physical and mental health domains. There were differences in the magnitude of change between the three diseases, but not in the ability of RA, PsA and psoriasis patients to achieve HRQoL improvements. Similar to other studies using anti-TNF agents, we showed that improvements are achieved in response to therapy in both physical and mental health components of the SF-36 in all three diseases.

**Acknowledgments** The authors would like to thank Julia R. Gage, PhD, whose work was funded by Amgen Inc, for assistance with writing the manuscript.

**Funding** These analyses were funded by Immunex Corporation, a wholly owned subsidiary of Amgen Inc, and by Wyeth, which was acquired by Pfizer Inc in October 2009.

**Competing interests** ViS has been a consultant to Abbott Immunology, Alder Biopharmaceuticals, Amgen, BiogenIdec, Bristol-Myers Squibb, CBio, CanFite, Centocor, Chelsea Therapeutics, Emergent Biosolutions, Genentech, GlaxoSmithKline, Idera, Incyte, Iroko, Lexicon Genetics, Nuon Therapeutics, Pfizer, Regeneron, Rigel, Roche, Sanofi-Aventis, Schering Plough and UCB. VeS and DF have no conflicts to declare. ASK is an employee and shareholder of Pfizer Inc. GP, YS and DJZ are employees and shareholders of Amgen Inc. BW is a consultant for Amgen Inc.

**Ethics approval** Approval was obtained from the institutional review boards at all study sites.

**Provenance and peer review** Not commissioned; externally peer reviewed.

## REFERENCES

1. Strand V, Singh JA. Newer biological agents in rheumatoid arthritis: impact on health-related quality of life and productivity. *Drugs* 2010;**70**:121–45.
2. Singh JA, Strand V. Spondyloarthritis is associated with poor function and physical health-related quality of life. *J Rheumatol* 2009;**36**:1012–20.
3. Sokoll KB, Helliwell PS. Comparison of disability and quality of life in rheumatoid and psoriatic arthritis. *J Rheumatol* 2001;**28**:1842–6.
4. Husted JA, Gladman DD, Farewell VT, et al. Health-related quality of life of patients with psoriatic arthritis: a comparison with patients with rheumatoid arthritis. *Arthritis Rheum* 2001;**45**:151–8.
5. Borman P, Toy GG, Babaoglu S, et al. A comparative evaluation of quality of life and life satisfaction in patients with psoriatic and rheumatoid arthritis. *Clin Rheumatol* 2007;**26**:330–4.
6. de Korte J, Sprangers MA, Mombers FM, et al. Quality of life in patients with psoriasis: a systematic literature review. *J Invest Dermatol Symp Proc* 2004;**9**:140–7.
7. Kimball AB, Jacobson C, Weiss S, et al. The psychosocial burden of psoriasis. *Am J Clin Dermatol* 2005;**6**:383–92.
8. Fortune DG, Main CJ, O'Sullivan TM, et al. Quality of life in patients with psoriasis: the contribution of clinical variables and psoriasis-specific stress. *Br J Dermatol* 1997;**137**:755–60.
9. Rapp SR, Feldman SR, Exum ML, et al. Psoriasis causes as much disability as other major medical diseases. *J Am Acad Dermatol* 1999;**41**:401–7.
10. Krueger G, Koo J, Lebwohl M, et al. The impact of psoriasis on quality of life: results of a 1998 National Psoriasis Foundation patient-membership survey. *Arch Dermatol* 2001;**137**:280–4.
11. Prinz JC, Fitzgerald O, Boggs RI, et al. Combination of skin, joint and quality of life outcomes with etanercept in psoriasis and psoriatic arthritis in the PRESTA trial. *J Eur Acad Dermatol Venereol* 2011;**25**:559–64.
12. Revicki DA, Menter A, Feldman S, et al. Adalimumab improves health-related quality of life in patients with moderate to severe plaque psoriasis compared with the United States general population norms: results from a randomized, controlled phase III study. *Health Qual Life Outcomes* 2008;**6**:75.
13. Kavanaugh A, Antoni C, Krueger GG, et al. Infliximab improves health related quality of life and physical function in patients with psoriatic arthritis. *Ann Rheum Dis* 2006;**65**:471–7.
14. Krueger GG, Langley RG, Finlay AY, et al. Patient-reported outcomes of psoriasis improvement with etanercept therapy: results of a randomized phase III trial. *Br J Dermatol* 2005;**153**:1192–9.
15. Han C, Smolen JS, Kavanaugh A, et al. The impact of infliximab treatment on quality of life in patients with inflammatory rheumatic diseases. *Arthritis Res Ther* 2007;**9**:R103.
16. Maini RN, Breedveld FC, Kalden JR, et al. Sustained improvement over two years in physical function, structural damage, and signs and symptoms among patients with rheumatoid arthritis treated with infliximab and methotrexate. *Arthritis Rheum* 2004;**50**:1051–65.
17. Papp KA, Tying S, Lahfa M, et al. A global phase III randomized controlled trial of etanercept in psoriasis: safety, efficacy, and effect of dose reduction. *Br J Dermatol* 2005;**152**:1304–12.
18. Sterry W, Ortonne JP, Kirkham B, et al. Comparison of two etanercept regimens for treatment of psoriasis and psoriatic arthritis: PRESTA randomised double blind multicentre trial. *BMJ* 2010;**340**:c147.
19. Revicki DA, Willian MK, Menter A, et al. Relationship between clinical response to therapy and health-related quality of life outcomes in patients with moderate to severe plaque psoriasis. *Dermatology (Basel)* 2008;**216**:260–70.
20. Reich K, Nestle FO, Papp K, et al. Improvement in quality of life with infliximab induction and maintenance therapy in patients with moderate-to-severe psoriasis: a randomized controlled trial. *Br J Dermatol* 2006;**154**:1161–8.
21. Feldman SR, Gottlieb AB, Bala M, et al. Infliximab improves health-related quality of life in the presence of comorbidities among patients with moderate-to-severe psoriasis. *Br J Dermatol* 2008;**159**:704–10.
22. Saad AA, Ashcroft DM, Watson KD, et al. Improvements in quality of life and functional status in patients with psoriatic arthritis receiving anti-tumor necrosis factor therapies. *Arthritis Care Res (Hoboken)* 2010;**62**:345–53.
23. Linde L, Sørensen J, Ostergaard M, et al. Health-related quality of life: validity, reliability, and responsiveness of SF-36, 15D, EQ-5D [corrected] RAQoL, and HAQ in patients with rheumatoid arthritis. *J Rheumatol* 2008;**35**:1528–37.
24. Husted JA, Gladman DD, Farewell VT, et al. Validating the SF-36 health survey questionnaire in patients with psoriatic arthritis. *J Rheumatol* 1997;**24**:511–7.
25. Leung YY, Ho KW, Zhu TY, et al. Testing scaling assumptions, reliability and validity of medical outcomes study short-form 36 health survey in psoriatic arthritis. *Rheumatology (Oxford)* 2010;**49**:1495–501.

26. **Nichol MB**, Margolies JE, Lippa E, *et al*. The application of multiple quality-of-life instruments in individuals with mild-to-moderate psoriasis. *Pharmacoeconomics* 1996;**10**:644–53.
27. **Bronsard V**, Paul C, Prey S, *et al*. What are the best outcome measures for assessing quality of life in plaque type psoriasis? A systematic review of the literature. *J Eur Acad Dermatol Venereol* 2010;**24** (Suppl 2):17–22.
28. **Ara R**, Brazier J. Deriving an algorithm to convert the eight mean SF-36 dimension scores into a mean EQ-5D preference-based score from published studies (where patient level data are not available). *Value Health* 2008;**11**:1131–43.
29. **Ara R**, Brazier J. Predicting the short form-6D preference-based index using the eight mean short form-36 health dimension scores: estimating preference-based health-related utilities when patient level data are not available. *Value Health* 2009;**12**:346–53.
30. **Strand V**, Crawford B, Singh J, *et al*. Use of “spydergrams” to present and interpret SF-36 health-related quality of life data across rheumatic diseases. *Ann Rheum Dis* 2009;**68**:1800–4.
31. **Emery P**, Breedveld FC, Hall S, *et al*. Comparison of methotrexate monotherapy with a combination of methotrexate and etanercept in active, early, moderate to severe rheumatoid arthritis (COMET): a randomised, double-blind, parallel treatment trial. *Lancet* 2008;**372**:375–82.
32. **Kekow J**, Moots RJ, Emery P, *et al*. Patient-reported outcomes improve with etanercept plus methotrexate in active early rheumatoid arthritis and the improvement is strongly associated with remission: the COMET trial. *Ann Rheum Dis* 2010;**69**:222–5.
33. **Kekow J**, Moots R, Khandker R, *et al*. Improvements in patient-reported outcomes, symptoms of depression and anxiety, and their association with clinical remission among patients with moderate-to-severe active early rheumatoid arthritis. *Rheumatology (Oxford)* 2011;**50**:401–9.
34. **Mease PJ**, Kivitz AJ, Burch FX, *et al*. Etanercept treatment of psoriatic arthritis: safety, efficacy, and effect on disease progression. *Arthritis Rheum* 2004;**50**:2264–72.
35. **Ware JE**, Jr, Kosinski M, Dewey JE. *How to Score Version 2 of the SF-36 Health Survey*. Lincoln, RI: QualityMetric Inc, 2000.
36. **Brazier J**, Roberts J, Deverill M. The estimation of a preference-based measure of health from the SF-36. *J Health Econ* 2002;**21**:271–92.
37. **Strand V**, Vessley A, Hu A, *et al*. Improved health-related quality of life (HRQOL) with apremilast (APR) treatment in psoriatic arthritis (PsA): results from a phase 2 randomized controlled study (Abstract 1940). *Arthritis Rheum* 2010;**62**:S811.
38. **Strand V**, Hu A, Day R, *et al*. Improved quality of life with apremilast (APR) in the treatment of psoriasis: results from a phase IIb randomized controlled study (Abstract P3337). *J Am Acad Dermatol* 2011;**64**:AB154.
39. **Shikier R**, Willian MK, Okun MM, *et al*. The validity and responsiveness of three quality of life measures in the assessment of psoriasis patients: results of a phase II study. *Health Qual Life Outcomes* 2006;**4**:71.
40. **Kvamme MK**, Kristiansen IS, Lie E, *et al*. Identification of cutpoints for acceptable health status and important improvement in patient-reported outcomes, in rheumatoid arthritis, psoriatic arthritis, and ankylosing spondylitis. *J Rheumatol* 2010;**37**:26–31.
41. **Ware JE**, Jr. *User's Manual for the SF-36v2™ Health Survey – Second Edition*. Lincoln, RI: QualityMetric Inc, 2000.
42. **Lebwohl M**, Papp K, Han C, *et al*. Ustekinumab improves health-related quality of life in patients with moderate-to-severe psoriasis: results from the PHOENIX 1 trial. *Br J Dermatol* 2010;**162**:137–46.
43. **Salaffi F**, Carotti M, Gasparini S, *et al*. The health-related quality of life in rheumatoid arthritis, ankylosing spondylitis, and psoriatic arthritis: a comparison with a selected sample of healthy people. *Health Qual Life Outcomes* 2009;**7**:25.
44. **Ortonne JP**, Shear N, Shumack S, *et al*. Impact of efalizumab on patient-reported outcomes in high-need psoriasis patients: results of the international, randomized, placebo-controlled phase III Clinical Experience Acquired with Raptiva (CLEAR) trial [NCT00256139]. *BMC Dermatol* 2005;**5**:13.
45. **Birrell FN**, Hassell AB, Jones PW, *et al*. How does the short form 36 health questionnaire (SF-36) in rheumatoid arthritis (RA) relate to RA outcome measures and SF-36 population values? A cross-sectional study. *Clin Rheumatol* 2000;**19**:195–9.
46. **Tuttleman M**, Pillemer SR, Tilley BC, *et al*. A cross sectional assessment of health status instruments in patients with rheumatoid arthritis participating in a clinical trial. Minocycline in Rheumatoid Arthritis Trial Group. *J Rheumatol* 1997;**24**:1910–5.