



# Potential of zebrafish as a model to characterise MicroRNA profiles in mechanically mediated joint degeneration

Elizabeth A. Lawrence<sup>1</sup> · Chrissy L. Hammond<sup>1</sup> · Emma J. Blain<sup>2</sup>

Accepted: 31 August 2020 / Published online: 15 September 2020  
© The Author(s) 2020

## Abstract

Mechanically mediated joint degeneration and cartilage dyshomeostasis is implicated in highly prevalent diseases such as osteoarthritis. Increasingly, MicroRNAs are being associated with maintaining the normal state of cartilage, making them an exciting and potentially key contributor to joint health and disease onset. Here, we present a summary of current *in vitro* and *in vivo* models which can be used to study the role of mechanical load and MicroRNAs in joint degeneration, including: non-invasive murine models of PTOA, surgical models which involve ligament transection, and unloading models based around immobilisation of joints or removal of load from the joint through suspension. We also discuss how zebrafish could be used to advance this field, namely through the availability of transgenic lines relevant to cartilage homeostasis and the ability to accurately map strain through the cartilage, enabling the response of downstream MicroRNA targets to be followed dynamically at a cellular level in areas of high and low strain.

**Keywords** Zebrafish · Joints · Loading · Cartilage · MicroRNA · Osteoarthritis

## Introduction

Skeletal homeostasis is intrinsically linked to mechanical loading, with physiological loading promoting cartilage health (Lee and Bader 1997; Otterness et al. 1998; Soltz et al. 2000; Manninen 2001; Galois et al. 2003; Shelton, Bader and Lee 2003; Sharma, Saxena and Mishra 2007) and maintenance of bone mass (Russo 2009). Abnormal loading of joints, particularly the hip (Croft et al. 1992) and knee (Felson et al. 1991; Coggon et al. 2000), is associated with joint degeneration and osteoarthritis (OA) onset. OA is the most common joint disease globally, with up to 50% of people over the age of 65 estimated to suffer from the disease (Lawrence et al. 2008; Murphy et al. 2008). During OA, the articular cartilage of joints is degraded leading to ectopic bone formation, joint inflammation and severe pain in sufferers, with almost 75% of people living with OA experiencing

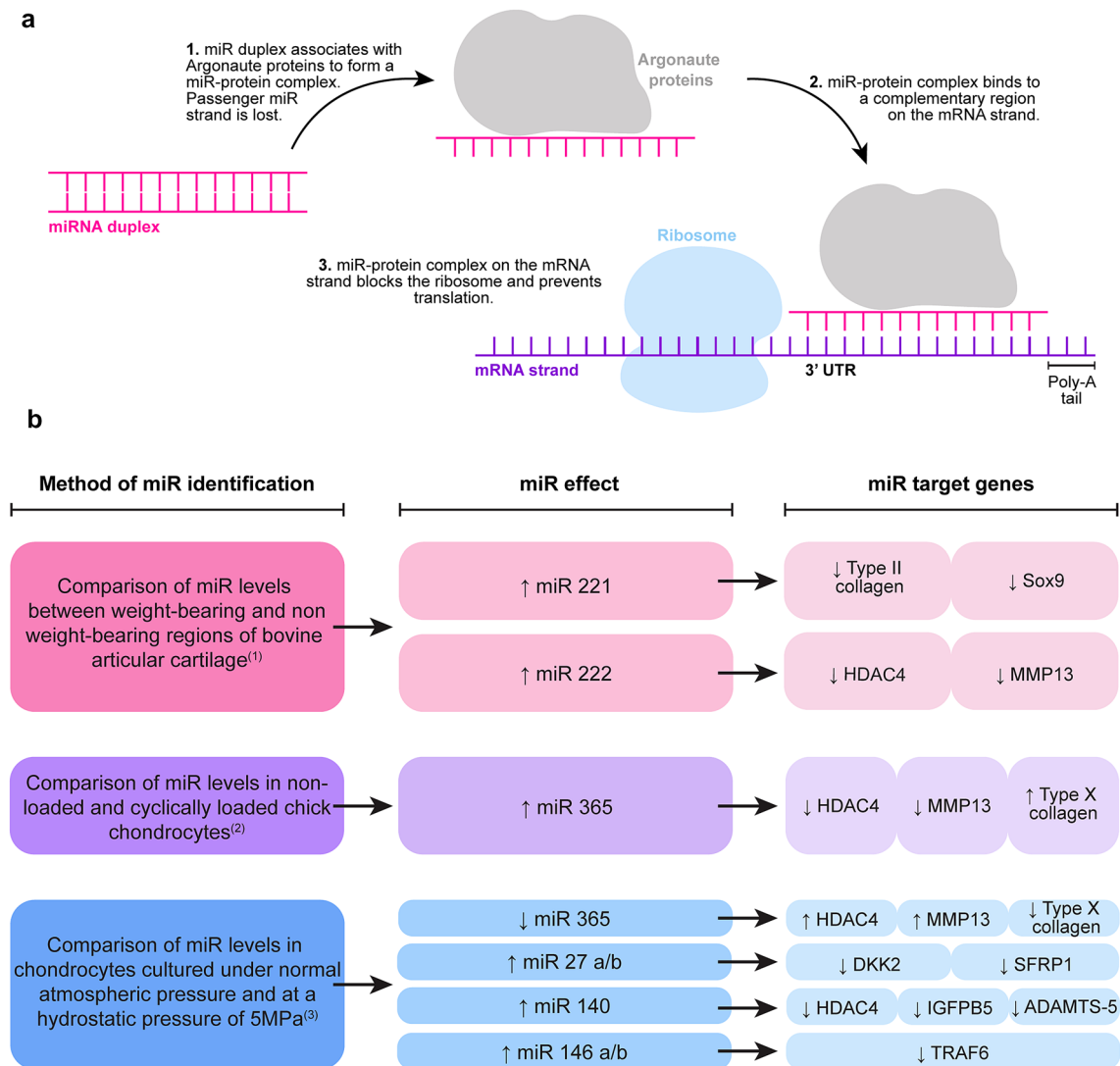
constant pain and 12.5% describing their pain as frequently unbearable (Arthritis Research UK 2017).

Although changes to mechanical loading have been identified as a major risk factor for OA (Kujala et al. 1995; Lane et al. 1999; McAlindon et al. 1999), the full mechanism by which mechanically mediated joint degeneration occurs during OA onset is not fully understood. It has been suggested that expression of short non-coding MicroRNAs (miRs) which can regulate gene expression and are key in cartilage homeostasis could be key to disease onset. miRs have an average length of 22 nucleotides (O'Brien et al. 2018) and are able to interact with mRNAs, mostly via the 3' untranslated region (UTR), to modify their expression (Fig. 1a) (Ha and Kim 2014). Alterations in articular cartilage miR expression are associated with joint degeneration and OA pathogenesis (Araldi and Schipani 2010; Goldring and Marcu 2012; Swingle et al. 2012); importantly, miRs are reported to be mechanically regulated in cartilage chondrocytes.

✉ Elizabeth A. Lawrence  
elizabeth.lawrence@bristol.ac.uk

<sup>1</sup> School of Physiology, Pharmacology and Neuroscience,  
University of Bristol, Bristol BS8 1TD, UK

<sup>2</sup> Biomechanics and Bioengineering Centre Versus  
Arthritis, School of Biosciences, Cardiff University,  
Cardiff CF10 3AX, UK



**Fig. 1** **a** Schematic overview of miR interaction with mRNA. **b** Summary of miRs known to respond to specific stimuli in chondrocytes, and the genes which are affected by changes to these miR expression levels. The mechanical stimulus found to alter miR expression

is listed on the left, the miR and how its expression is altered is displayed in the central column and the downstream gene targets of each miR are shown in the right column. <sup>(1)</sup>Dunn et al. 2009, <sup>(2)</sup>Guan et al. 2011, <sup>(3)</sup>Cheleschi et al. 2017

## Mechano-regulation of miRs and their downstream targets in chondrocytes

Early evidence of mechanically induced epigenetic regulation in articular cartilage was reported in stifle joint medial femoral condyles with increased expression of miR-221 and miR-222 in anterior weight-bearing compared to posterior non-weight-bearing regions (Dunn et al. 2009). Putative gene targets for miR-221 and miR-222 (contains conserved seed site) include histone deacetylase 4 (HDAC4) and matrix metalloproteinase 13 (MMP13) (Song et al. 2015). miR-221 expression inversely correlates with expression of chondrogenic markers including

type II collagen and the transcription factor SOX9 in mesenchymal stem cells (Lolli et al. 2014)); thus, it may have relevance in regulating load-induced cartilage homeostasis.

Significant elevation of miR-365 has previously been observed after application of tensile strain to 3D-sponge scaffolds seeded with chick chondrocytes (Guan et al. 2011) and human chondrocytes isolated from macroscopically normal regions of OA cartilage (Yang et al. 2016). A direct target gene is HDAC4 which regulates downstream molecules including MMP13 and type X collagen (Yang et al. 2016).

Significant induction of miR-27a/b, miR-140 and miR-146a/b with a concomitant reduction in miR-365 was observed in OA chondrocytes exposed to hydrostatic

pressure (Cheleschi et al. 2017). Other studies have corroborated the mechano-regulation of miR-146a in chondrocytes (Jin et al. 2014; Guan et al. 2018) and miR-27 (Blain, unpublished observations). WNT signalling molecules *e.g.* dickkopf-2 (DKK2) and secreted frizzled-related protein 1 (sFRP1) have been identified as miR-27 target genes (Wu et al. 2019), and more recently, the TNF receptor-associated factor-6 (TRAF-6)-mediated NF $\kappa$ B signalling pathway has been shown to be targeted by miR-146 (Shao et al. 2020). miR-140, a key regulator of chondrogenesis and cartilage homeostasis (Miyaki et al. 2010), has many putative target genes, but of relevance to this perspective is its known modulation of HDAC4, insulin growth factor-binding protein 5 (IGFBP5) and a disintegrin and metalloproteinase with thrombospondin motif 5 (ADAMTS-5) (Tuddenham et al. 2006; Cheleschi et al. 2017), all of which are molecules important in maintaining cartilage homeostasis. A summary of mechano-regulated miRs and their downstream targets in chondrocytes can be found in Fig. 1b.

## Existing model systems for investigating involvement of mechanical load in joint degeneration

Many models have been developed, involving both in vitro and in vivo systems, to investigate the role of abnormal/ altered mechanical load in mediating degeneration of the synovial joint tissues that results in initiation and progression of OA.

### In vitro loading models

Development of in vitro systems for mechanobiology research has utilised isolated cells derived from several species typically including human, mouse, bovine and porcine as either primary or cell lines; mechanical load is subsequently applied to these cells following culture as either a monolayer (Millward-Sadler et al. 2000; Ikenoue et al. 2003) or in 3D constructs (Buschmann et al. 1995; Roberts et al. 2001), or as a co-culture system with at least two different joint cell populations (McCorry, Puetzer and Bonassar 2016). Explant tissues, using only articular cartilage (Guilak et al. 1994) or alternatively an osteochondral plug (cartilage–bone unit) have also been utilised to investigate mechanobiological pathways (Blain et al. 2001; Patwari et al. 2003). There are distinct advantages to using in vitro culture systems to characterise cell behaviour in response to mechanical stimuli. Key amongst these is the ability to accrue a large cell population for experimentation, as well as co-culturing cells of different origins to investigate communication and interplay in response to loading. Use of explant tissue provides an in-situ environment which

partially recapitulates an in vivo system due to the presence of an extensive, native extracellular matrix (ECM), facilitating cell–matrix communication, known to be critical in mechano-signalling (Guilak et al. 2006).

Utilisation of these in vitro models has contributed significantly to our understanding of how cells respond to mechanical stimuli and have facilitated characterisation of the molecular pathways that initiate tissue degeneration; however, what they cannot do is recapitulate the complex interactions that exist within the joint tissues, *i.e.* articular cartilage, bone, meniscus, synovium and associated vasculature. Furthermore, the interplay of mechanical responses with other biological stimuli, *e.g.* inflammation, or the longitudinal effects of mechanical stimuli on cell/tissue behaviour can only be comprehensively analysed in an in vivo model system.

### In vivo loading models

In vivo loading models have been developed to replicate the pathological features resulting from a joint injury or mechanical insult, often referred to as a model of post-traumatic OA (secondary OA). Such mechanical insult can either be administered surgically, *e.g.* via damage of the ligaments or meniscus, or via non-invasive means, *e.g.* application of external loads to the joint.

#### Surgical loading models

One of the earliest models that demonstrated the involvement of mechanical injury in induction of joint degeneration and OA pathology was the *Pond–Nuki* model (Pond and Nuki 1973); transection of the canine anterior cruciate ligament (ACL) altered the stability and biomechanics of the joint resulting in progression of OA. Subsequent studies involving ACL transection in other species including rabbits (Batiste et al. 2004), cats (Herzog et al. 1993) and sheep (Beveridge et al. 2013) have also been performed. Since then, ACL transection in rodent models has been reported with induction of tissue degeneration in response to altered joint biomechanics (Kamekura et al. 2005; Okamura et al. 2010).

Another common surgical approach to studying how joint tissue components respond to altered loading patterns is via meniscal destabilisation involving either partial or complete removal of the medial meniscus, with early studies performed in rabbits (Shapiro and Glimcher 1980) and guinea pigs (Meacock, Bodmer and Billingham 1990), and subsequently in mice (Glasson, Blanchet and Morris 2007). Although these models induce tissue degeneration due to altered joint biomechanics, the procedures themselves are invasive and require opening of the joint capsule; this in itself can initiate an inflammatory response impacting the

local environment and may not be completely representative of the mechanical insult alone, thus necessitating increased animal numbers to provide “sham” controls (incision only surgeries).

### Non-invasive loading models

In recent years, there has been an emergence in non-invasive mouse models of post-traumatic OA (PTOA). Such models are believed to more accurately recapitulate the mechanisms involved in mechanically induced injuries in humans, initiating joint degeneration through direct damage to the tissue components of the joint. These non-invasive models rely on the external application of a mechanical load to the tibia, either as a single traumatic insult or a defined period of loading, without any surgical intervention.

Utilisation of a single compressive load (12 N) has been previously demonstrated to rupture the ACL initiating pathological changes in murine articular cartilage and underlying subchondral bone (Christiansen et al. 2012). Pathologically distinct phases with an early inflammatory phase and a later degenerative component are evident in the non-invasive murine PTOA model (Gilbert et al. 2018); this proves advantageous as a model system as it provides a ‘therapeutic window’ following mechanical insult in which to assess treatments to delay or halt joint degeneration.

Tibial compression, via the application of cyclic axial compressive load transmitted through the natural articulation of the murine knee joint, induces articular cartilage overloading and tissue damage, following multiple loading episodes (Poulet et al. 2011). These non-invasive loading models have also been used to investigate the interplay of mechanical load and genetics, with use of genetically engineered mice (gene knockouts and transgenic overexpression) to more clearly delineate the importance of these risk factors in joint degeneration. Overall, the non-invasive loading models obviate the need for technically challenging surgical techniques, but more importantly avoid any confounding effects induced by the trauma of the surgical procedure and are more translatable to mechanical trauma experienced by humans.

### Models of unloading

The absence of weight-bearing is equally detrimental to the health of the joint tissues demonstrating that a physiological range of mechanical load is essential for maintenance of homeostasis. Numerous *in vivo* models of joint ‘unloading’ or immobilisation have been utilised to characterise how the absence of loading affects tissue behaviour, particularly in articular cartilage. Seminal early studies induced knee joint immobilisation using casts or surgery (limb amputation), typically in canine models (Palmoski, Perricone and Brandt

1979; Palmoski, Colyer and Brandt 1980), rabbits (Sood 1971; Langenskiöld, Michelsson and Videman 1979) and later in rodents (Hagiwara et al. 2009). An alternative model involving suspension of rodents by the tail has also been used to recapitulate hindlimb unloading (Tomiya et al. 2009; Nomura et al. 2017). Joint unloading inhibited expression of key ECM components, *e.g.* proteoglycans, reduced cartilage thickness and induced surface fibrillations, resulting in disruption of articular cartilage integrity. Interestingly, effects were reversible following joint ‘reuse’ and the reintroduction of weight-bearing (Palmoski, Perricone and Brandt 1979; Behrens, Kraft and Oegema 1989), demonstrating the highly adaptive nature of articular cartilage.

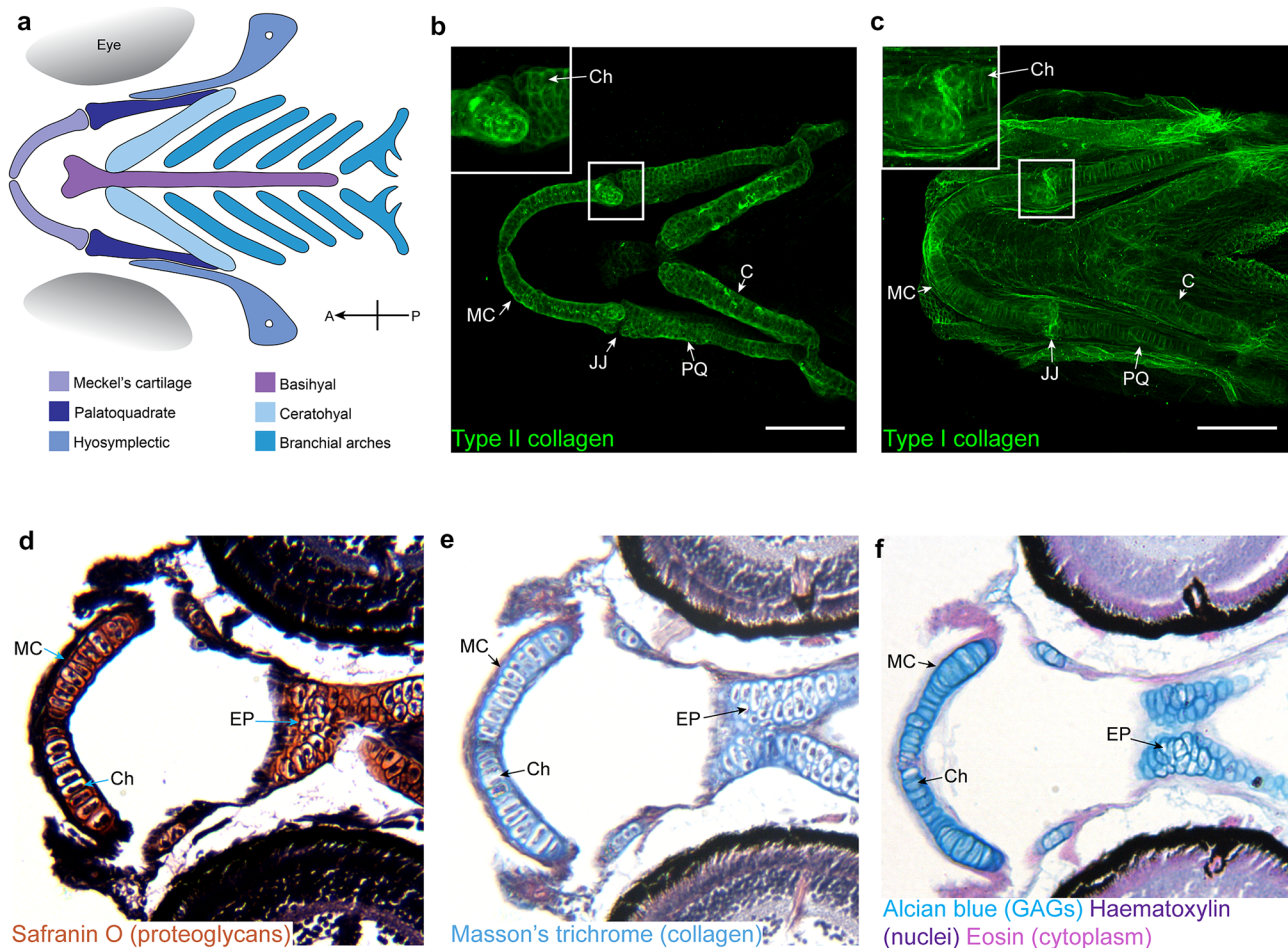
### Prospects for using zebrafish as a model for mechanically mediated joint degeneration to investigate miR dysregulation

Increasingly, the freshwater teleost zebrafish is used as a laboratory model for disease with the low cost of housing, ease of genetic manipulation, rapid development (which has been carefully staged (Kimmel et al. 1995)) and genetic tractability among the major advantages of this model. Although zebrafish are more remote from humans than other animal models (last common ancestor was 445 million years ago compared to 96 million years ago for rodents (Ali et al. 2011)) and the fact they have undergone genome duplication (Meyer and Schartl 1999): many genes are conserved (Dodd et al. 2000; Taylor et al. 2003) with around 70% of human genes found to have at least one orthologue (Howe et al. 2013) and 85% of disease-related genes being conserved (Wellcome Trust 2013) in zebrafish. Generally, zebrafish are ideal model organisms for studying disease as they have transparent larvae which enable dynamic longitudinal *in vivo* imaging in the same fish throughout maturation. They have high fecundity with the eggs developing externally, meaning the mother does not have to be killed to study early development, thus reducing animal costs and complying with the 3Rs principles of reduction and replacement (Russell and Burch 1959). In addition to these more general advantages, a number of specific factors are discussed below which make zebrafish an attractive prospect for studies into the role of miRs in mechanically mediated joint degeneration.

### Zebrafish cartilage contains components also found in human articular cartilage. Loading of cartilage can be manipulated in zebrafish

At 5 days post fertilisation (dpf) the zebrafish craniofacial skeleton is made up of distinct cartilaginous elements





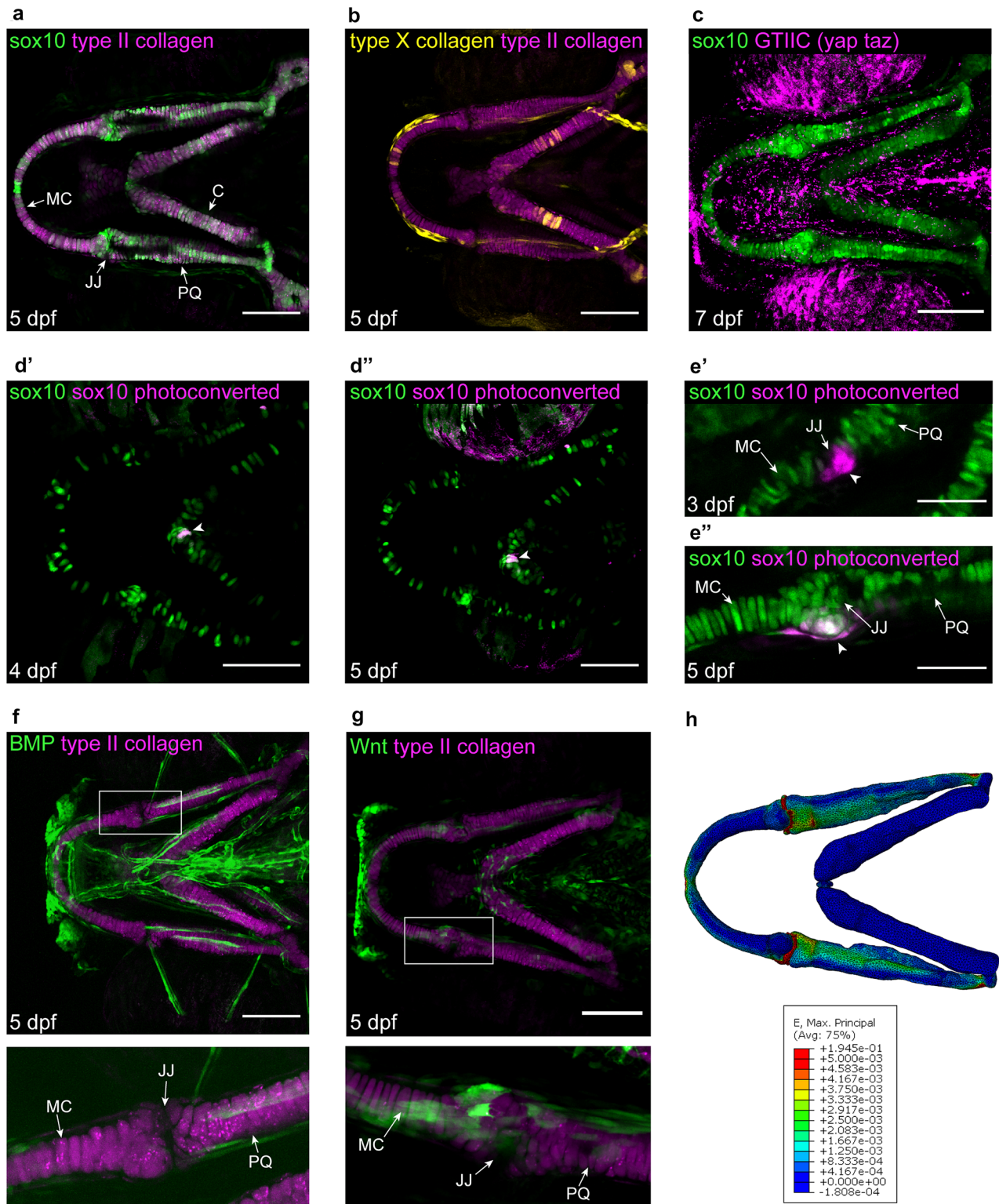
**Fig. 2** Zebrafish craniofacial cartilage has key components found in human articular cartilage. **a** Schematic representation of the cartilage elements which make up the zebrafish craniofacial skeleton at 5 dpf. Orientation compass included in bottom right, with *A* anterior and *P* posterior. **b, c** Ventral view confocal image stacks of 5 dpf craniofacial skeleton immunostained for type II collagen (**b**) and type I collagen (**c**) in the ECM surrounding chondrocytes. Inset shows zoom of jaw joint. Scale bar = 100  $\mu$ m. Images in **b** and **c** previously published

in (Lawrence et al. 2018). **d–f** Ventral paraffin sections of 5 dpf craniofacial skeleton stained with Safranin O (**d**) to show proteoglycans, Masson's trichrome (**e**) to show the presence of collagen, and alcian blue (**f**) to show the presence of glycosaminoglycans in the chondrocyte ECM which makes up the cartilage. *MC* Meckel's cartilage, *JJ* jaw joint, *PQ* palatoquadrate, *C* ceratohyal, *Ch* example of a chondrocyte surrounded by ECM, *EP* ethmoid plate

(Fig. 2a) derived from the migratory neural crest (Schilling and Kimmel 1994). This cartilage contains all the key components of human cartilage including chondrocytes which undergo hypertrophy (Mitchell et al. 2013; Askary et al. 2016), collagens and proteoglycans (Fig. 2b–f).

As with human cartilage, the craniofacial cartilages of larval zebrafish have been shown to be mechanically sensitive (Brunt et al. 2016). The biomechanical load exerted on the craniofacial cartilages and joint can be controlled in larvae genetically or pharmacologically to induce paralysis (either flaccid or rigid) to reduce load, or the induction of hyperactivity to induce excessive loading conditions (Shwartz et al. 2012; Brunt et al. 2016). Strains in the zebrafish skeleton, as in other systems, can be modelled computationally using Finite Element Analysis (FEA) (Fig. 3h), a computational

technique that predicts deformation, stress and strain in a structure when subjected to external loading conditions (Bright and Rayfield 2011). FEA can be used to visualise patterns of strain by displaying them with colours to show areas of high and low strain, or degree of tissue deformation. Finite element models for the developing zebrafish jaw have been published for wild-type fish (Brunt et al. 2016; Brunt et al. 2016), mutants (Lawrence et al. 2018) and larvae exposed to different gravitational fields (Lawrence et al. 2020). Cartilage material properties change during development, in response to mutations to chondrocyte genes or changes to gravitational force, and can be tested *ex vivo* by atomic force microscopy (AFM) or nanoindentation (Lawrence et al. 2018, 2020), to provide further information and accuracy to FE models.



Cavitation of the jaw joint between the Meckel's cartilage and the palatoquadrate to form a fluid-filled synovium (as opposed to a cellular interzone) occurs late in zebrafish (around 14 dpf) relative to onset of joint movement; this

joint continues to mature, eventually forming a synovial joint with all of the tissues observed in a human synovial joint (Askary et al. 2016). As the cartilaginous craniofacial skeleton forms early in development and many elements are



**Fig. 3** Tools available in zebrafish to facilitate spatiotemporal study of miRNA targets at a cellular level. **a–c** Ventral view confocal images of the craniofacial cartilages of *Tg(4.9Sox10:EGFP;col2a1aBAC:mcherry)* (**a**), *Tg(col2a1aBAC:mcherry;col10a1aBAC:citrine)hu7050* (**b**), *Tg(-4.9Sox10:EGFP;4xGTTC:eGFP)* (**c**) imaged live. Scale bar=100  $\mu$ m. **d, d'** Ventral view confocal images of the craniofacial cartilages of *Tg(Sox10:GALA-VP16;UAS:Kaede)* with photoconverted chondrocytes shown in magenta and annotated with a white arrowhead in the same fish at 4 dpf (**d'**) and 5 dpf (**d''**). Scale bar=100  $\mu$ m. **e'e''** Confocal images of the lower jaw joint in *Tg(Sox10:GALA-VP16;UAS:Kaede)* with photoconverted chondrocytes shown in magenta and annotated with a white arrowhead in the same fish at 3 dpf (**e'**) and 5 dpf (**e''**). Scale bar=50  $\mu$ m, images in **e'** and **e''** previously published in (Brunt et al. 2017). **f, g** Ventral view confocal images of the craniofacial cartilages of *Tg(5xBMPRE-Xla.Id3:GFP;col2a1aBAC:mCherry)* (**f**) and *Tg(7xTCF.XlaSiam.nlsGFP;col2a1aBAC:mCherry)* (**g**) imaged live. Scale bar=100  $\mu$ m. **h** Finite element model of maximum principal (E. max) strains in 5 dpf wild-type zebrafish viewed from a dorsal orientation. E. max represents tensional strains with cooler colours (blue) on the scale corresponding to lower strain and red corresponding to higher strain values. *MC* Meckel's cartilage, *JJ* jaw joint, *PQ* palatoquadrate, *C* ceratohyal

retained into adulthood, it is a valuable model to investigate at a cellular level how the cartilage is affected by different genetic mutations, such as those to downstream miR targets, and environmental factors, such as mechanical loading.

The presence of lower jaw cartilages in which loading can be manipulated allows miRs which are responsive to mechanical load to be isolated (Chen et al. 2005) and identified so that specific pathways can be dysregulated through CRISPR/cas9-induced mutation of miR signalling pathway components or through immersion in miR agonists/antagonists and the effect on chondrocytes studied. Other skeletal elements in zebrafish, such as the vertebral centra, have also been demonstrated to be mechanically sensitive, and to undergo remodelling in response to load (Fiaz et al. 2012; Ofer et al. 2019), which could be regulated by miRs. Finite element models also exist for the zebrafish vertebral column (Newham et al. 2019; Ofer et al. 2019). However, as patterning and mineralisation of the vertebral column occur somewhat later than that of the jaw (from 8 dpf onwards) (Wopat et al. 2018), testing the role of specific miRs in the vertebral column is likely to be more technically challenging.

### Tools available in zebrafish which allow for cellular changes to be observed in the context of the whole tissue

A major advantage to zebrafish as a model is the possibility to dynamically image cellular events which could be impacted by miR dysregulation such as chondrocyte behaviour, ECM production and the expression of targets downstream of the mechanically regulated miR in the living zebrafish. This can be achieved through high-resolution confocal or lightsheet imaging of transgenic reporter lines.

Many transgenic lines (listed in full in Table 1) relevant to the study of cartilage homeostasis and degeneration exist, including lines which facilitate the study of chondrocyte behaviour and expression of important ECM components such as the *sox9:eGFP*, *sox10:eGFP*, *col2:mCherry* and *colx:citrine* lines. As discussed, these molecules have been implicated as downstream miR targets. In the context of zebrafish, they enable chondrocyte morphology and migration within the cartilage to be tracked throughout maturation from immature stages when *sox9* and *sox10* are predominantly expressed (Fig. 3a), to hypertrophic stages just prior to ossification when chondrocytes express *colX* (Schmid et al. 1991; Mitchell et al. 2013); (Fig. 3b). In later larval stages, the impact of load on osteogenesis can be studied dynamically, for example with the *GTTC:eGFP* line which shows Yap/Taz – TEAD activity (Fig. 3c). Photoconvertible transgenics such as *sox10:kaede* offer the opportunity to track single cells (Fig. 3d'–e'') to study how their migration and maturation are affected depending on their location in the cartilage and the forces they are exposed to.

Zebrafish represent a model in which the spatiotemporal response of both cells and genes to a mechanical stimuli can be measured simultaneously. Finite Element modelling can be used to measure the response of specific cell populations, with areas of altered strain having been mapped previously (Fig. 3h) and changes to chondrocyte morphology and ECM composition in these regions analysed (Lawrence et al. 2020). Live imaging of transgenic reporter lines such as the *wnt:GFP* or the *BMP:GFP* reporter (Fig. 3f, g) also enables the response of specific genes to be tracked in regions of abnormal strain. This technique was used to correlate regions of high strain in joint morphogenesis with *Wnt* reporter expression, leading to the identification of *Wnt16* as a mechanoresponsive gene that controls joint cell behaviour (Brunt et al. 2017). This allows the effects of a genetic mutation or pharmacological intervention to be mapped according to where in the cartilage a chondrocyte is, for example at the joint or at a muscle attachment site, to see if some populations of cells react differently to stimuli.

In addition to the transgenic lines available, there is also good availability of miR tools in zebrafish to enable study of joint degeneration in the context of mechanically mediated miRs. miRs have been shown to play a role in cartilage development and homeostasis in zebrafish. Zebrafish of the *dicer1* mutant line, which lacks the Dicer miR processing enzyme, have abnormal craniofacial development and increased expression of *sox10* (Weiner et al. 2019), confirming that miRs are essential for normal development (Wietholds et al. 2003). A number of miRs such as miR-140 and miR-29 are regulated by *sox9* in zebrafish, and in turn control aspects of chondrocyte behaviour (Nakamura et al. 2012; Le et al. 2016), while others such as miR-92a maintain BMP signalling in cartilage. The spatiotemporal expression

**Table 1** Full nomenclature of transgenic lines important for study of mechanically mediated joint degeneration

Text reference	Full transgenic name	References
<i>sox9:eGFP</i>	<i>Tg(-2421/+29sox9b:EGFP<sub>uw2</sub>)</i>	Garcia et al. (Garcia et al. 2017)
<i>sox10:eGFP</i>	<i>Tg(-4.9Sox10:EGFP)</i>	Wada et al. (Wada et al. 2005)
<i>col2:mCherry</i>	<i>Tg(col2a1aBAC:mcherry)</i>	Hammond and Schulte-Merker (Hammond and Schulte-Merker 2009)
<i>colx:citrine</i>	<i>Tg(col10a1aBAC:citrine)hu7050</i>	Mitchell et al. (Mitchell et al. 2013)
<i>GTIIC:eGFP</i>	<i>Tg(4xGTIIC:EGFP)</i>	Miesfield and Link 2014 (Miesfield and Link 2014)
<i>sox10:kaede</i>	<i>Tg(Sox10:GALA-VPI6;UAS:Kaede)</i>	Hatta et al. (Hatta, Tsujii and Omura 2006)
<i>wnt:GFP</i>	<i>Tg(7xTCF.XlaSiam:nlsgFP)</i>	Moro et al. (Moro et al. 2012)
<i>BMP:GFP</i>	<i>Tg(5xBMPRE-Xla.Id3:GFP)</i>	Alexander et al. (Alexander et al. 2011)

of a number of miRs in zebrafish has also been determined using techniques such as in-situ hybridisation and microarrays (Wienholds et al. 2005). This includes the mapping of 115 miRs which are conserved from vertebrates (Wienholds et al. 2005).

Synthetic miRs have successfully been used to downregulate genes of interest in zebrafish (Giacomotto, Rinkwitz and Becker 2015), indicating that this model system is tolerant to miR injection to target downstream molecules. This would enable specific miR signalling pathways to be inhibited in existing transgenic lines and the resulting changes to cells in areas of known strain to be studied dynamically.

We conclude that despite the existence of several model systems to study the role of mechanical loading in joint degeneration, and the emergence of non-invasive mouse models of PTOA, zebrafish offer the advantage of live deep skeletal tissue imaging in response to changes in load or inhibition of miR signalling.

**Acknowledgements** The authors would like to acknowledge the Biomechanics and Bioengineering Research Centre Versus Arthritis (510390) at Cardiff University and the Wolfson Bioimaging Facility at the University of Bristol. They would also like to thank Roddy Skinner for the image in Fig. 3c and Jessye Aggleton for the Finite Element models shown in Fig. 3h.

**Funding** EL is funded by Wellcome Trust Dynamic Molecular Cell Biology Doctoral training studentship. CH is funded by Versus Arthritis Senior Fellowship 21937.

**Open Access** This article is licensed under a Creative Commons Attribution 4.0 International License, which permits use, sharing, adaptation, distribution and reproduction in any medium or format, as long as you give appropriate credit to the original author(s) and the source, provide a link to the Creative Commons licence, and indicate if changes were made. The images or other third party material in this article are included in the article's Creative Commons licence, unless indicated otherwise in a credit line to the material. If material is not included in the article's Creative Commons licence and your intended use is not permitted by statutory regulation or exceeds the permitted use, you will need to obtain permission directly from the copyright holder. To view a copy of this licence, visit <http://creativecommons.org/licenses/by/4.0/>.

## References

- Alexander C et al (2011) Combinatorial roles for BMPs and endothelin 1 in patterning the dorsal-ventral axis of the craniofacial skeleton. *Development* 138(23):5135–5146. <https://doi.org/10.1242/dev.067801>
- Ali S et al (2011) Zebrafish embryos and larvae: a new generation of disease models and drug screens. *Birth Defects Res C Embryo Today* 93(2):115–133. <https://doi.org/10.1002/bdrc.20206>
- Araldi E, Schipani E (2010) MicroRNA-140 and the silencing of osteoarthritis. *Genes Dev* 24(11):1075–1080. <https://doi.org/10.1101/gad.1939310>
- Arthritis Research UK (2017) State of Musculoskeletal Health 2017.
- Askary A et al (2016) Ancient origin of lubricated joints in bony vertebrates. *Elife* 5:e16415. <https://doi.org/10.7554/eLife.16415>
- Batiste DL et al (2004) Ex vivo characterization of articular cartilage and bone lesions in a rabbit ACL transection model of osteoarthritis using MRI and micro-CT. *Osteoarthritis Cartilage* 12(12):986–996. <https://doi.org/10.1016/j.joca.2004.08.010>
- Behrens F, Kraft EL, Oegema TR (1989) Biochemical changes in articular cartilage after joint immobilization by casting or external fixation. *J Orthop Res* 7(3):335–343. <https://doi.org/10.1002/jor.1100070305>
- Beveridge JE et al (2013) Tibiofemoral centroid velocity correlates more consistently with cartilage damage than does contact path length in two ovine models of stifle injury. *J Orthop Res* 31(11):1745–1756. <https://doi.org/10.1002/jor.22429>
- Blain EJ et al (2001) Up-regulation of matrix metalloproteinase expression and activation following cyclical compressive loading of articular cartilage in vitro. *Arch Biochem Biophys* 396(1):49–55. <https://doi.org/10.1006/abbi.2001.2575>
- Bright JA, Rayfield EJ (2011) The response of cranial biomechanical finite element models to variations in mesh density. *Anat Rec* 294(4):610–620. <https://doi.org/10.1002/ar.21358>
- Brunt L et al (2016) Building finite element models to investigate zebrafish jaw biomechanics. *J Vis Exp*. <https://doi.org/10.3791/54811>
- Brunt LH et al (2016) Differential effects of altered patterns of movement and strain on joint cell behaviour and skeletal morphogenesis. *Osteoarthritis Cartilage* 24(11):1940–1950. <https://doi.org/10.1016/J.JOCA.2016.06.015>
- Brunt LH et al (2017) Wnt signalling controls the response to mechanical loading during zebrafish joint development. *Development* 144(15):2798–2809. <https://doi.org/10.1242/dev.153528>
- Buschmann MD et al (1995) Mechanical compression modulates matrix biosynthesis in chondrocyte/agarose culture. *J Cell Sci* 108(4):1497–1508

- Cheleschi S et al (2017) Hydrostatic pressure regulates MicroRNA expression levels in osteoarthritic chondrocyte cultures via the Wnt/ $\beta$ -catenin pathway. *Int J Mol Sci* 18(1):133. <https://doi.org/10.3390/ijms18010133>
- Chen PY et al (2005) The developmental miRNA profiles of zebrafish as determined by small RNA cloning. *Genes Dev* 19(11):1288–1293. <https://doi.org/10.1101/gad.1310605>
- Christiansen BA et al (2012) Musculoskeletal changes following non-invasive knee injury using a novel mouse model of post-traumatic osteoarthritis. *Osteoarthritis Cartilage* 20(7):773–782. <https://doi.org/10.1016/j.joca.2012.04.014>
- Coggon D et al (2000) Occupational physical activities and osteoarthritis of the knee. *Arthritis Rheum* 43(7):1443–1449. [https://doi.org/10.1002/1529-0131\(200007\)43:7](https://doi.org/10.1002/1529-0131(200007)43:7)
- Croft P et al (1992) Osteoarthritis of the hip and occupational activity. *Scand J Work Environ Health* 18(1):59–63. <https://doi.org/10.5271/sjweh.1608>
- Dodd A et al (2000) Zebrafish: bridging the gap between development and disease. *Hum Mol Genet* 9(16):2443–2449. <https://doi.org/10.1093/hmg/9.16.2443>
- Dunn W, DuRaine G, Reddi AH (2009) Profiling microRNA expression in bovine articular cartilage and implications for mechanotransduction. *Arthritis Rheum* 60(8):2333–2339. <https://doi.org/10.1002/art.24678>
- Felson DT et al (1991) Occupational physical demands, knee bending, and knee osteoarthritis: results from the Framingham Study. *J Rheumatol* 18(10):1587–1592
- Fiaz AW et al (2012) Swim-training changes the spatio-temporal dynamics of skeletogenesis in zebrafish larvae (*danio rerio*). *PLoS ONE* 7(4):e34072. <https://doi.org/10.1371/journal.pone.0034072>
- Galois L et al (2003) Moderate-impact exercise is associated with decreased severity of experimental osteoarthritis in rats. *Rheumatology* 42(5):692–693. <https://doi.org/10.1093/rheumatology/keg094>
- Garcia GR et al (2017) In vivo characterization of an AHR-dependent long noncoding RNA required for proper Sox9b expression. *Mol Pharmacol* 91(6):609–619. <https://doi.org/10.1124/mol.117.108233>
- Giacomotto J, Rinkwitz S, Becker TS (2015) Effective heritable gene knockdown in zebrafish using synthetic microRNAs. *Nat Commun* 6(1):1–11. <https://doi.org/10.1038/ncomms8378>
- Gilbert SJ et al (2018) Inflammatory and degenerative phases resulting from anterior cruciate rupture in a non-invasive murine model of post-traumatic osteoarthritis. *J Orthop Res* 36(8):2118–2127. <https://doi.org/10.1002/jor.23872>
- Glasson SS, Blanchet TJ, Morris EA (2007) The surgical destabilization of the medial meniscus (DMM) model of osteoarthritis in the 129/SvEv mouse. *Osteoarthritis Cartilage* 15(9):1061–1069. <https://doi.org/10.1016/j.joca.2007.03.006>
- Goldring MB, Marcu KB (2012) Epigenomic and microRNA-mediated regulation in cartilage development, homeostasis, and osteoarthritis. *Trends Mol Med* 18(2):109–118. <https://doi.org/10.1016/j.molmed.2011.11.005>
- Guan Y et al (2011) MiR-365: a mechanosensitive microRNA stimulates chondrocyte differentiation through targeting histone deacetylase 4. *FASEB J* 25(12):4457–4466. <https://doi.org/10.1096/fj.11-185132>
- Guan YJ et al (2018) Evidence that miR-146a attenuates aging- and trauma-induced osteoarthritis by inhibiting Notch 1, IL-6, and IL-1 mediated catabolism. *Aging Cell* 17(3):e12752. <https://doi.org/10.1111/acel.12752>
- Guilak F et al (1994) The effects of matrix compression on proteoglycan metabolism in articular cartilage explants. *Osteoarthritis Cartilage* 2(2):91–101. [https://doi.org/10.1016/S1063-4584\(05\)80059-7](https://doi.org/10.1016/S1063-4584(05)80059-7)
- Guilak F et al (2006) The pericellular matrix as a transducer of biomechanical and biochemical signals in articular cartilage. *Ann N Y Acad Sci* 1068:498–512
- Ha M, Kim VN (2014) Regulation of microRNA biogenesis. *Nat Rev Mol Cell Biol* 15(8):509–524. <https://doi.org/10.1038/nrm3838>
- Hagiwara Y et al (2009) Changes of articular cartilage after immobilization in a rat knee contracture model. *J Orthop Res* 27(2):236–242. <https://doi.org/10.1002/jor.20724>
- Hammond CL, Schulte-Merker S (2009) Two populations of endochondral osteoblasts with differential sensitivity to Hedgehog signalling. *Development* 136(23):3991–4000. <https://doi.org/10.1242/dev.042150>
- Hatta K, Tsujii H, Omura T (2006) Cell tracking using a photoconvertible fluorescent protein. *Nat Protoc* 1(2):960–967. <https://doi.org/10.1038/nprot.2006.96>
- Herzog W et al (1993) Hindlimb loading, morphology and biochemistry of articular cartilage in the ACL-deficient cat knee. *Osteoarthritis Cartilage* 1(4):243–251. [https://doi.org/10.1016/S1063-4584\(05\)80330-9](https://doi.org/10.1016/S1063-4584(05)80330-9)
- Howe K et al (2013) The zebrafish reference genome sequence and its relationship to the human genome. *Nature* 496(7446):498–503. <https://doi.org/10.1038/nature12111>
- Ikenoue T et al (2003) Mechanoregulation of human articular chondrocyte aggrecan and type II collagen expression by intermittent hydrostatic pressure in vitro. *J Orthop Res* 21(1):110–116. [https://doi.org/10.1016/S0736-0266\(02\)00091-8](https://doi.org/10.1016/S0736-0266(02)00091-8)
- Jin L et al (2014) Role of miR-146a in human chondrocyte apoptosis in response to mechanical pressure injury in vitro. *Int J Mol Med* 34(2):451–463. <https://doi.org/10.3892/ijmm.2014.1808>
- Kamekura S et al (2005) Osteoarthritis development in novel experimental mouse models induced by knee joint instability. *Osteoarthritis Cartilage* 13(7):632–641. <https://doi.org/10.1016/j.joca.2005.03.004>
- Kimmel CB et al (1995) Stages of embryonic development of the zebrafish. *Dev Dyn* 203(3):253–310. <https://doi.org/10.1002/aja.1002030302>
- Kujala UM et al (1995) Knee osteoarthritis in former runners, soccer players, weight lifters, and shooters. *Arthritis Rheum* 38(4):539–546. <https://doi.org/10.1002/art.1780380413>
- Lane NE et al (1999) Recreational physical activity and the risk of osteoarthritis of the hip in elderly women. *J Rheumatol* 26(4):849–854
- Langenskiöld A, Michelsson JE, Videman T (1979) Osteoarthritis of the knee in the rabbit produced by immobilization: attempts to achieve a reproducible model for studies on pathogenesis and therapy. *Acta Orthop* 50(1):1–14. <https://doi.org/10.3109/17453677909024083>
- Lawrence EA et al (2018) The mechanical impact of col11a2 loss on joints; col11a2 mutant zebrafish show changes to joint development and function, which leads to early-onset osteoarthritis. *Philos Trans R Soc B Biol Sci* 373(1759):20170335. <https://doi.org/10.1098/rstb.2017.0335>
- Lawrence EA et al (2020) Exposure to hypergravity during zebrafish development alters cartilage material properties and strain distribution. *bioRxiv*. <https://doi.org/10.1101/2020.05.26.116046>
- Lawrence RC et al (2008) Estimates of the prevalence of arthritis and other rheumatic conditions in the United States. Part II. *Arthritis Rheum* 58(1):26–35. <https://doi.org/10.1002/art.23176>
- Le LTT et al (2016) The microRNA-29 family in cartilage homeostasis and osteoarthritis. *J Mol Med* 94(5):583–596. <https://doi.org/10.1007/s00109-015-1374-z>
- Lee DA, Bader DL (1997) Compressive strains at physiological frequencies influence the metabolism of chondrocytes seeded in agarose. *J Orthop Res* 15(2):181–188. <https://doi.org/10.1002/jor.1100150205>



- Lolli A et al (2014) Pro-chondrogenic effect of miR-221 and slug depletion in human MSCs. *Stem Cell Rev Rep* 10(6):841–855. <https://doi.org/10.1007/s12015-014-9532-1>
- Manninen P (2001) Physical exercise and risk of severe knee osteoarthritis requiring arthroplasty. *Rheumatology* 40(4):432–437. <https://doi.org/10.1093/rheumatology/40.4.432>
- McAlindon TE et al (1999) Level of physical activity and the risk of radiographic and symptomatic knee osteoarthritis in the elderly: the Framingham study. *Am J Med* 106(2):151–157. [https://doi.org/10.1016/s0002-9343\(98\)00413-6](https://doi.org/10.1016/s0002-9343(98)00413-6)
- McCorry MC, Puetzer JL, Bonassar LJ (2016) Characterization of mesenchymal stem cells and fibrochondrocytes in three-dimensional co-culture: analysis of cell shape, matrix production, and mechanical performance. *Stem Cell Res Ther* 7(1):39. <https://doi.org/10.1186/s13287-016-0301-8>
- Meacock SC, Bodmer JL, Billingham ME (1990) Experimental osteoarthritis in guinea-pigs. *J Exp Pathol* 71(2):279–293
- Meyer A, Schartl M (1999) Gene and genome duplications in vertebrates: the one-to-four (-to-eight in fish) rule and the evolution of novel gene functions. *Curr Opin Cell Biol* 11(6):699–704. [https://doi.org/10.1016/s0955-0674\(99\)00039-3](https://doi.org/10.1016/s0955-0674(99)00039-3)
- Miesfeld JB, Link BA (2014) Establishment of transgenic lines to monitor and manipulate Yap/Taz-Tead activity in zebrafish reveals both evolutionarily conserved and divergent functions of the Hippo pathway. *Mech Dev* 133:177–188. <https://doi.org/10.1016/j.mod.2014.02.003>
- Mitchell RE et al (2013) New tools for studying osteoarthritis genetics in zebrafish. *Osteoarthritis Cartilage* 21(2):269–278. <https://doi.org/10.1016/j.joca.2012.11.004>
- Miyaki S et al (2010) MicroRNA-140 plays dual roles in both cartilage development and homeostasis. *Genes Dev* 24(11):1173–1185. <https://doi.org/10.1101/gad.1915510>
- Moro E et al (2012) In vivo Wnt signaling tracing through a transgenic biosensor fish reveals novel activity domains. *Dev Biol* 366(2):327–340. <https://doi.org/10.1016/j.ydbio.2012.03.023>
- Murphy L et al (2008) Lifetime risk of symptomatic knee osteoarthritis. *Arthritis Care Res* 59(9):1207–1213. <https://doi.org/10.1002/art.24021>
- Nakamura Y et al (2012) Sox9 is upstream of microRNA-140 in cartilage. *Appl Biochem Biotechnol* 166(1):64–71. <https://doi.org/10.1007/s12010-011-9404-y>
- Newham E et al (2019) Finite element and deformation analyses predict pattern of bone failure in loaded zebrafish spines. *J R Soc Interface* 16(160):20190430. <https://doi.org/10.1098/rsif.2019.0430>
- Nomura M et al (2017) Thinning of articular cartilage after joint unloading or immobilization. An experimental investigation of the pathogenesis in mice. *Osteoarthritis Cartilage* 25(5):727–736. <https://doi.org/10.1016/j.joca.2016.11.013>
- O'Brien J et al (2018) Overview of microRNA biogenesis, mechanisms of actions, and circulation. *Front Endocrinol*. <https://doi.org/10.3389/fendo.2018.00402>
- Ofer L et al (2019) A novel nonosteocytic regulatory mechanism of bone modeling. *PLoS Biol* 17(2):e3000140. <https://doi.org/10.1371/journal.pbio.3000140>
- Okamura N et al (2010) Deficiency of tenascin-C delays articular cartilage repair in mice. *Osteoarthritis Cartilage* 18(6):839–848. <https://doi.org/10.1016/j.joca.2009.08.013>
- Otterness IG et al (1998) Exercise protects against articular cartilage degeneration in the hamster. *Arthritis Rheum* 41(11):2068–2076. [https://doi.org/10.1002/1529-0131\(199811\)41:11<2068:AID-ART23>3.0.CO;2-L](https://doi.org/10.1002/1529-0131(199811)41:11<2068:AID-ART23>3.0.CO;2-L)
- Palmoski MJ, Colyer RA, Brandt KD (1980) Joint motion in the absence of normal loading does not maintain normal articular cartilage. *Arthritis Rheum* 23(3):325–334. <https://doi.org/10.1002/art.1780230310>
- Palmoski M, Perricone E, Brandt KD (1979) Development and reversal of a proteoglycan aggregation defect in normal canine knee cartilage after immobilization. *Arthritis Rheum* 22(5):508–517. <https://doi.org/10.1002/art.1780220511>
- Patwari P et al (2003) Proteoglycan degradation after injurious compression of bovine and human articular cartilage in vitro: interaction with exogenous cytokines. *Arthritis Rheum* 48(5):1292–1301. <https://doi.org/10.1002/art.10892>
- Pond MJ, Nuki G (1973) Experimentally-induced osteoarthritis in the dog. *Ann Rheum Dis* 32(4):387–388. <https://doi.org/10.1136/ard.32.4.387>
- Poulet B et al (2011) Characterizing a novel and adjustable noninvasive murine joint loading model. *Arthritis Rheum* 63(1):137–147. <https://doi.org/10.1002/art.27765>
- Roberts SR et al (2001) Mechanical compression influences intracellular Ca<sup>2+</sup> signaling in chondrocytes seeded in agarose constructs. *J Appl Physiol* 90(4):1385–1391. <https://doi.org/10.1152/jappl.2001.90.4.1385>
- Russell W, Burch R (1959) The principles of humane experimental technique. Methuen & Co., London
- Russo CR (2009) The effects of exercise on bone basic concepts and implications for the prevention of fractures. *Clin Cases Miner Bone Metab* 6(3):223–228
- Schilling TF, Kimmel CB (1994) Segment and cell type lineage restrictions during pharyngeal arch development in the zebrafish embryo. *Development* 120(3):483–494
- Schmid TM et al (1991) Late events in chondrocyte differentiation: hypertrophy, type X collagen synthesis and matrix calcification. *In Vivo* 5(5):533–540
- Shao J et al (2020) MiR-146a-5p promotes IL-1 $\beta$ -induced chondrocyte apoptosis through the TRAF6-mediated NF- $\kappa$ B pathway. *Inflamm Res* 69(6):619–630. <https://doi.org/10.1007/s00011-020-01346-w>
- Shapiro F, Glimcher MJ (1980) Induction of osteoarthrosis in the rabbit knee joint. *Clin Orthop Relat Res* 147:287–295
- Sharma G, Saxena RK, Mishra P (2007) Differential effects of cyclic and static pressure on biochemical and morphological properties of chondrocytes from articular cartilage. *Clin Biomech* 22(2):248–255. <https://doi.org/10.1016/j.clinbiomech.2006.09.008>
- Shelton JC, Bader DL, Lee DA (2003) Mechanical conditioning influences the metabolic response of cell-seeded constructs. *Cells Tissues Organs* 175(3):140–150. <https://doi.org/10.1159/000074630>
- Shwartz Y et al (2012) Muscle contraction controls skeletal morphogenesis through regulation of chondrocyte convergent extension. *Dev Biol* 370(1):154–163. <https://doi.org/10.1016/j.ydbio.2012.07.026>
- Millward-Sadler SJ et al (2000) Mechanotransduction via integrins and interleukin-4 results in altered aggrecan and matrix metalloproteinase 3 gene expression in normal, but not osteoarthritic, human articular chondrocytes. *Arthritis Rheum* 43(9):2091–2099. [https://doi.org/10.1002/1529-0131\(200009\)43:9<2091:AID-ANR21>3.0.CO;2-C](https://doi.org/10.1002/1529-0131(200009)43:9<2091:AID-ANR21>3.0.CO;2-C)
- Soltz MA et al (2000) Functional tissue engineering of articular cartilage through dynamic loading of chondrocyte-seeded agarose gels. *J Biomech Eng* 122(3):252. <https://doi.org/10.1115/1.429656>
- Song J et al (2015) MicroRNA-222 regulates MMP-13 via targeting HDAC-4 during osteoarthritis pathogenesis. *BBA Clin* 3(1):79–89. <https://doi.org/10.1016/j.bbacli.2014.11.009>
- Sood SC (1971) A study of the effects of experimental immobilisation on rabbit articular cartilage. *J Anat* 108(Pt 3):497–507
- Swingler TE et al (2012) The expression and function of microRNAs in chondrogenesis and osteoarthritis. *Arthritis Rheum* 64(6):1909–1919. <https://doi.org/10.1002/art.34314>

- Taylor JS et al (2003) Genome duplication, a trait shared by 22,000 species of ray-finned fish. *Genome Res* 13(3):382–390. <https://doi.org/10.1101/gr.640303>
- Tomiya M et al (2009) Skeletal unloading induces a full-thickness patellar cartilage defect with increase of urinary collagen II CTx degradation marker in growing rats. *Bone* 44(2):295–305. <https://doi.org/10.1016/j.bone.2008.10.038>
- Tuddenham L et al (2006) The cartilage specific microRNA-140 targets histone deacetylase 4 in mouse cells. *FEBS Lett* 580(17):4214–4217. <https://doi.org/10.1016/j.febslet.2006.06.080>
- Wada N et al (2005) Hedgehog signaling is required for cranial neural crest morphogenesis and chondrogenesis at the midline in the zebrafish skull. *Development* 132(17):3977–3988. <https://doi.org/10.1242/dev.01943>
- Weiner AMJ et al (2019) Dicer1 is required for pigment cell and craniofacial development in zebrafish. *Biochim Biophys Acta Gene Regul Mech* 4:472–485. <https://doi.org/10.1016/j.bbagr.2019.02.005>
- Wellcome Trust (2013) Zebrafish genome yields significant similarity to human genome | Wellcome.
- Wienholds E et al (2003) The microRNA-producing enzyme Dicer1 is essential for zebrafish development. *Nat Genet* 35(3):217–218. <https://doi.org/10.1038/ng1251>
- Wienholds E et al (2005) Cell biology: microRNA expression in zebrafish embryonic development. *Science* 309(5732):310–311. <https://doi.org/10.1126/science.1114519>
- Wopat S et al (2018) Spine patterning is guided by segmentation of the notochord sheath. *Cell Rep* 22(8):2026–2038. <https://doi.org/10.1016/j.celrep.2018.01.084>
- Wu X et al (2019) MiR-27a targets DKK2 and SFRP1 to promote reosseointegration in the regenerative treatment of peri-implantitis. *J Bone Miner Res* 34(1):123–134. <https://doi.org/10.1002/jbmr.3575>
- Yang X et al (2016) Mechanical and IL-1 $\beta$  responsive miR-365 contributes to osteoarthritis development by targeting histone deacetylase 4. *Int J Mol Sci* 17(4):436. <https://doi.org/10.3390/ijms17040436>

**Publisher's Note** Springer Nature remains neutral with regard to jurisdictional claims in published maps and institutional affiliations.