

What is your diagnosis? A solitary purple papule on the arm

Engin Şenel¹, Yasemin Yuyucu Karabulut²

¹ Hitit University Faculty of Medicine, Department of Dermatology, Çorum, Turkey

² Mersin University Faculty of Medicine, Department of Pathology, Mersin, Turkey

Citation: Şenel E, Karabulut YY. What is your diagnosis? A solitary papule on the arm *Dermatol Pract Concept*. 2014;4(4):13. <http://dx.doi.org/10.5826/dpc.0404a13>

Received: March 29, 2014; **Accepted:** April 3, 2014; **Published:** October 31, 2014

Copyright: ©2014 Şenel et al. This is an open-access article distributed under the terms of the Creative Commons Attribution License, which permits unrestricted use, distribution, and reproduction in any medium, provided the original author and source are credited.

Funding: None.

Competing interests: The authors have no conflicts of interest to disclose.

All authors have contributed significantly to this publication.

Corresponding author: Engin Şenel, MD, BBA, Assistant Professor of Dermatology, Hitit University Faculty of Medicine, Department of Dermatology, 19200 Çorum, Turkey. Tel. +90 364 2230300; Fax +90 364 2230323. Email: enginşenel@enginşenel.com

The patient

A 54-year-old woman with immune thrombocytopenic purpura (ITP) referred to our dermatology department with a three-week-history of a purple-colored lesion on her right arm. The patient was on treatment with oral prednisone at 20 mg/day for ITP and levothyroxine at 25 mg/day for hypothyroidism. No topical treatment was prescribed or used before our consultation. Dermatological examination revealed a 12.5 x 7.5 mm solitary purple papule located on the right upper extremity (Figure 1). Dermatoscopic examination disclosed bluish-red coloration (Figure 2). Surgical excision of the lesion was performed. Histopathological examination of the lesion revealed nodular vascular proliferation in dermis, pronounced congestion and extravagated erythrocytes (Figure 3). What is your diagnosis?



Figure 1. A purple papule in the right upper extremity. (Copyright: ©2014 Şenel et al.)

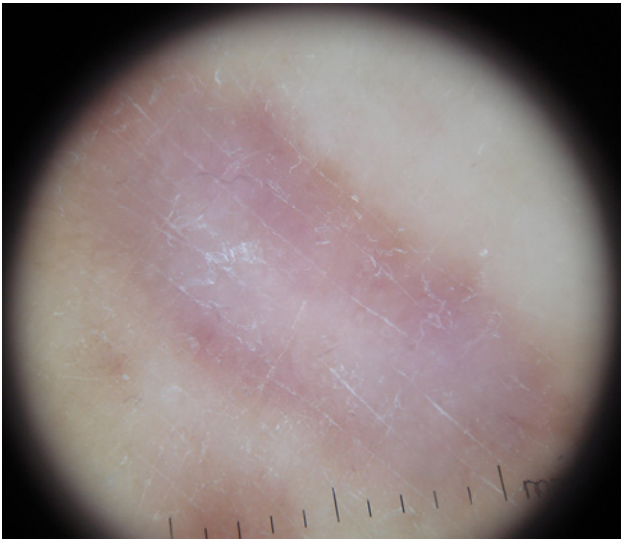


Figure 2. Bluish-red coloration in polarized dermatoscopy taken with DermLite II Pro HR, 3Gen Inc. (Copyright: ©2014 Şenel et al.)

Please send your answer to dpc@derm101.com. The first correct answer will receive a DL3N hand dermatoscope [cordially sponsored by 3GEN]. The case and the answer to the

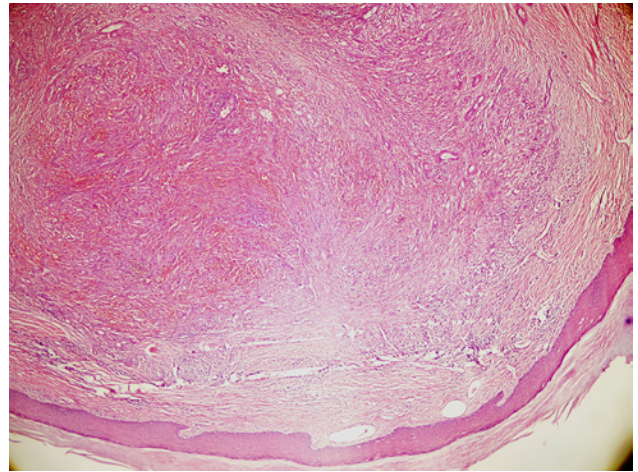


Figure 3. Nodular vascular proliferation in dermis, pronounced congestion and extravagated erythrocytes (H&E, x100). (Copyright: ©2014 Şenel et al.)

question will be presented in the next issue of *Dermatology Practical & Conceptual*.