

Systematics of the seed beetle genus *Decellebruchus* Borowiec, 1987 (Coleoptera, Bruchidae)

Jesús Romero Nápoles¹

¹ *Especialidad de Entomología y Acarología, Postgrado en Fitosanidad, Colegio de Postgraduados, Montecillo, Estado de México, MEXICO*

Corresponding author: *Jesús Romero Nápoles* (jnapoles@colpos.mx)

Academic editor: *A. Eben* | Received 7 January 2016 | Accepted 19 February 2016 | Published 11 April 2016

<http://zoobank.org/4612CAB9-78EF-4B2C-9F23-0F7B6CAA1223>

Citation: Romero JN (2016) Systematics of the seed beetle genus *Decellebruchus* Borowiec, 1987 (Coleoptera, Bruchidae). ZooKeys 579: 59–81. doi: 10.3897/zookeys.579.7716

Abstract

Keys to species, descriptions, synonymy, host plants, and geographical distributions are presented for the three species in the genus *Decellebruchus* (Borowiec 1987); of those, *D. walker* (Pic 1912) was the only species included at the time of the genus denomination, *D. atrolineatus* (Pic 1921) is transferred to this genus, and *D. lunae* is described as a new species. The shortest and most parsimonious phylogenetic tree for genera with pectinate antennae had a length of 33, consistency index 87, and retention index 81.

Keywords

Seed beetles, *Decellebruchus*, Bruchidae, cladistics

Introduction

The monotypic genus *Decellebruchus* was erected by Borowiec in 1987 with the type species *Decellebruchus walkeri* (Pic 1912). This species has a complicated history, starting with *Bruchus figuratus* that was described by Walker (1859); however this was a homonym and then Pic (1912) proposed the replacement name of *Bruchus walkeri*. Later Decelle (1975b) transferred it to *Bruchidius*, but because the unusual pectinate antennae of the species in the genus *Bruchidius*, Borowiec (1987) erected the monotypic genus *Decellebruchus* for it. Another species that has been included unofficially in the latter genus is *Bruchus atrolineatus* Pic, 1921; however *B. atrolineatus* has also

suffered a series of generic changes through time. Finally the third species included in the genus is the new species *D. lunae*. In order to clarify the genus it is reviewed and a hypothesis of its phylogeny is proposed.

Material and methods

Specimens. Preparation of genitalia for study followed the techniques and nomenclature described by Kingsolver (1970) and modified by Romero and Johnson (1999). For specimens the following collections were consulted: Colección Entomológica del Colegio de Postgraduados, Montecillo, Estado de México, México (CEAM), Florida

Table 1. Characters used for the cladistic analysis for Bruchidae with pectinate antennae.

External morphology	
0. Body length	8–16 mm: 0; 1.5–5.4 mm: 1
1. Eye sinus	Shallow: 0; deep: 1
2. Male antenna shape	Not pectinate: 0; pectinate 1
3. Last antennal segment	About half as long as hind tibia: 0; as long as or longer than hind tibia: 1
4. Carina media on frons	With carina: 0; without carina: 1
5. Pronotal carina	Complete: 0; no complete: 1
6. Pronotum shape	Not conical, without distinctly concave sides: 0; conical with distinctly concave sides: 1
7. Pronotal disc	Without gibbosites: 0; with gibbosites: 1
8. Scutellum shape	Subsquare: 0; elongate: 1
9. Metepisternal sulcus	With sulcus: 0; without sulcus: 1
10. Tenth elytral stria	Extending nearly to apex of elytron: 0; extending to half of elytron: 1
11. Elytral basal tubercles	Without tubercles: 0; with tubercles: 1
12. Pygidium articulation	Pygidium and penultimate tergum partially fused and no covered by elytra 1; Penultimate tergum no fused to pygidium and covered by elytra 2
13. Hind femur	Without carinae: 0; with one carina or obsolete carinae 1; bicarinate: 2
14. Spines on hind femur	With 10–14 spines: 0; with 1 to 3 spines: 1; without spines: 2
15. Hind tibia carinae	With complete set of carinae: 0; incomplete set of carinae: 1
16. Tuft of white setae on fore coxa	Without tuft of white setae: 0; with tuft of white setae: 1
17. Male pygidium	Recline 0; vertical 1
Internal morphology	
18. Lateral lobes of male genitalia	Fused 0; divided 1
19. Ventral valve of male genitalia	No arcuate: 0; deeply arcuate 1
20. Shape of apical portion of median lobe of male genitalia	No bulbous: 0; bulbous: 1
21. Basal strut of lateral lobes of male genitalia	With an obsolete or small perpendicular keel: 0; with strong perpendicular keel 1
22. Armature of internal sac of male genitalia	Only with spinules: 0; with spinules and small teeth 1
Ecological characters	
23. Distribution	Worldwide 0; New world 1; Old world: 2
24. Host plants	Aricaceae: 0; Fabaceae: 1; Convolvulaceae: 2

Table 2. Data matrix.

Taxa	Character																								
	0	1	2	3	4	5	6	7	8	9	10	11	12	13	14	15	16	17	18	19	20	21	22	23	24
1. <i>Pachymerus</i>	0	0	0	0	1	0	0	0	0	0	0	0	0	0	0	0	0	0	0	0	0	0	0	1	0
2. <i>Kytorhinus</i>	1	1	1	1	0	1	0	0	1	1	0	0	1	1	2	1	0	1	0	0	0	0	0	0	1
3. <i>Megacerus</i>	1	1	1	1	1	1	0	0	0	1	1	0	0	1	1	0	0	1	0	0	0	0	0	1	2
4. <i>Callosobruchus</i>	1	1	1	1	1	1	0	1	0	1	0	1	0	2	1	0	0	1	1	0	0	0	0	2	1
5. <i>Conicobruchus</i>	1	1	1	1	1	1	1	0	0	1	0	0	0	1	1	1	0	0	1	0	0	0	0	2	1
6. <i>Rhipibruchus</i>	1	1	1	1	1	1	0	1	0	1	0	1	0	1	1	0	0	1	1	0	0	0	0	1	1
7. <i>Pectinibruchus</i>	1	1	1	1	1	1	0	1	1	1	0	0	0	1	1	1	0	1	1	0	0	0	0	1	1
8. <i>D. atrolineatus</i>	1	1	1	1	1	1	0	1	0	1	0	1	0	1	1	0	1	1	1	1	0	0	0	2	1
9. <i>D. walkeri</i>	1	1	1	1	1	1	0	1	0	1	0	1	0	1	1	0	1	1	1	1	1	0	1	2	1
10. <i>D. lunae</i>	1	1	1	1	1	1	0	1	0	1	0	1	0	1	1	0	1	1	1	1	0	1	1	2	1

State Collection of Arthropods, Gainesville, FL, USA (FSCA), Musee Zoologique de l'Universite de Lund, Lund University, Sweden (MZLU); South African National Collection of Insects, Queenswood, South Africa (SANC).

Cladistics. External morphological characters and internal characters, these latter only from male genitalia (Table 1) were used. Host plants and distribution were also considered. Taxa included in the analysis were only those bruchids with pectinate antennae (excluding the genera *Caryedes* and *Gibbobruchus* because they have only few species with pectinate antennae) and all species in the genus *Decellebruchus*. *Pachymerus*, a less derived genus was used as the outgroup. The data matrix is presented in Table 2. The program Hennig86 (Farris 1988) was used to generate the cladogram, although a comparative tree was obtained with Mesquite, version 3.04 (Maddison and Maddison 2015) using the same data matrix.

Results and discussion

Key to genera of Bruchidae with pectinate antennae.

- 1 Pygidium with one or two tergites exposed behind elytra; antennae in males pectinate or strongly serrate, in female serrate ***Kytorhinus* Bridwell**
- Pygidium covered at base by elytra..... **2**
- 2 Tenth elytral stria shortened, extending to middle of elytron; antennae in males pectinate, in female serrate ***Megacerus* Fahraeus**
- Tenth elytral stria extending nearly to apex of elytron..... **3**
- 3 Hind femur bicarinate, with spine on both internal and external ventral margins; antennae in males strongly serrate or pectinate, in female subserrate or serrate ***Callosobruchus* Pic**
- Hind femur not bicarinate or carinae obsolete, or only ventral carina present..... **4**

- 4 Pronotum conical with distinctly concave sides, antennae in males serrate or pectinate, in female subserrate **Conicobruchus Decelle**
 – Pronotum not conical, without distinctly concave sides **5**
 5 Last antennal segment as long as or longer than hind tibia **6**
 – Last antennal segment about half as longer as hind tibia
 **Decellebruchus Borowiec**
 6 Hind tibia carinate, mucro longer than lateral coronal denticle; scutellum subcuadrate **Rhipibruchus Bridwell**
 – Hind tibia with obsolete lateral carina, mucro absent; scutellum elongate
 **Pectinibruchus Kingsolver**

Key to species of *Decellebruchus*

- 1 Hind femur with only 1 subapical spine **2**
 – Hind femur with 1 subapical spine followed by 2 smaller spines
 **Decellebruchus walkeri (Pic)**
 2 Pygidium with basal spot of white pubescence; antennomere VII 1.76-2.0X wider than longer; hind femur with subapical acuminate spine about as long as width of tibial base **Decellebruchus lunae Romero, sp. n.**
 – Pygidium with two pubescent spots apically; antennomere VII 4.4-5.6X wider than longer; hind femur with small subapical acuminate spine about half as long as width of tibial base **Decellebruchus atrolineatus (Pic)**

Taxonomy

Decellebruchus Borowiec

Decellebruchus Borowiec, 1987: 149.

Description. Male. Vestiture: Moderately dense or dense, variegated; front coxa with a wide tuft of white setae. Body oval and stout. **Head:** Short, strongly constricted behind eyes, postocular lobe very short; eyes bulging, deeply emarginate; frons narrow, with sharp median carina; antennae pectinate from 4th or 5th segment. **Prothorax:** Pronotum subconical, without lateral carina; disc convex, slightly gibbous before scutellum and with shallow median channel; prosternal process narrow, triangular, acute. **Meso- and metathorax:** Scutellum square, bidentate apically; elytral striae regular; striae 4 and 5 abbreviated basally by tubercle. **Legs:** Metacoxa densely punctate; hind femur moderately swollen, ventral carinae obsolete. Internal ventral margin with small subapical spine, often followed by two smaller spines; hind tibia straight, enlarged, with complete or incomplete set of carinae, mucro longer than lateral coronal denticle. **Abdomen:** More or less telescoped, fifth sternite deeply emarginated; pygidium vertical. **Genitalia:**

Internal sac of male genitalia lined with fine spines with or without sclerites; ventral valve deeply arcuate. **Female.** Similar to male, except antenna not pectinate, eyes less bulging, pygidium subvertical, last abdominal sternite not emarginated.

***Decellebruchus atrolineatus* (Pic, 1921), comb. n.**

Bruchus atrolineatus Pic, 1921: 15, 1932: 36; Decelle 1951: 184, 1961: 8, 1975a: 21 (comb. n.).

Bruchidius atrolineatus: Preveit 1961: 636, 1967: 5, 1971: 247; Booker 1967: 2; Luca 1968a: 188, 1968b: 589; Decelle 1975a: 15; Southgate 1978: 219; Biemont et al. 1982: 2610; Hamon et al. 1982: 327; Pfaffenberger 1985: 3; Germain et al. 1987: 157; Monge et al. 1988: 297, 1989: 95; Huignard et al. 1989: 197; Pouzat and Nammour 1989: 319; Udayagiri and Wadhi 1989: 119; Lenga et al. 1990: 79; Glitho and Huignard 1990: 195; Pfaffenberger and Monge 1991: 309; Pichard et al. 1991: 185; Shimada and Ishihara 1991: 289; Credland 1992: 1; Ishihara and Shimada 1995: 127; Ofuya and Credland 1996: 323; Kingsolver 1988; Sanon et al. 2005; Löbl and Smetana 2010: 341.

Callosobruchus atrolineatus: Zacher 1952: 465; Shomar 1963: 178.

Bruchus semiflabellatus Pic, 1931; Bondar 1936: 37 (syn.); Kingsolver and Silva 1991: 413 (syn.); Udayagiri and Wadhi 1989: 119.

Acanthoscelides semiflabellatus: Blackwelder 1946: 761.

Callosobruchus semiflabellatus: Zacher 1952: 465.

Decellebruchus atrolineatus: Anton 1994: 100; Kergoat et al. 2005: 605 (without indicating clearly new combination).

Description. Male (Fig. 1a–b). Length (pronotum-elytra): 2.4–2.6 mm; width: 1.4–1.6 mm; maximum thoracic depth 1.5–1.7 mm. **Color:** Antennae with the first three segments yellowish, the rest dark or partially dark; head, prosternum, metasternum, base of meso-femur and meta-femora, and coxae dark; pronotum with two longitudinal dark bands, which may together form a dark spot; elytra variegated; pygidium with three pairs of dark spots, two apical, two median-lateral, and two basal; rest of body yellowish. **Vestiture:** Body with mixed yellowish and white pubescence; scutellum with whitish pubescence; fore coxa with a tuft of white setae; pygidium with yellowish and whitish pubescence forming a variegated pattern. **Head:** Short and broad, densely micropunctulate, frons with a strong median carina, distance between eyes 2.3–3.3× as wide as eye width, eye cleft 0.60–0.71× its length by ocular sinus, posterior margin of eye protruding from adjacent surfaces, postocular lobe rounded and setose; distance from base of antennae to apex of labrum 0.39–0.55× as long as distance from upper limits of eyes to apex of labrum; antennomeres I–III filiform, IV subserrate, V–XI pectinate; antennomere II 2.8–3.8× as long as antennomere XI; antennomere VII 4.4–5.6× wider than long; antenna extending slightly beyond humerus. **Prothorax:** Subconical, without lateral carina; densely foveolate, disc convex, slightly gibbous before scutellum

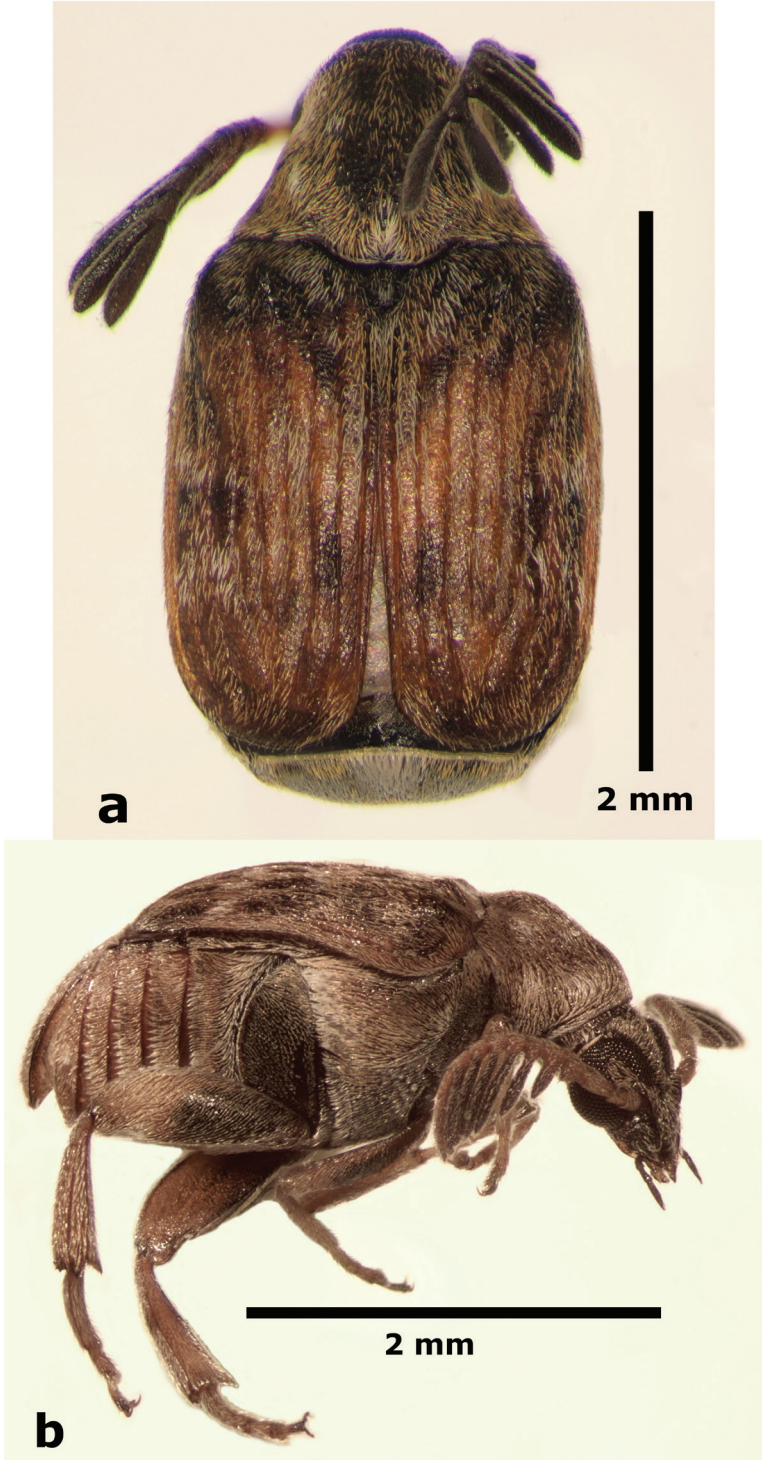


Figure 1. Male habitus of *Decellebruchus atrolineatus*; **a** dorsal view **b** lateral view.

and with shallow median channel; prosternal process narrow, triangular, acute, half as long as procoxae. **Meso- and metathorax:** Scutellum square, bidentate apically; elytral striae regular, striae 4 and 5 abbreviated basally by tubercle, humeri raised. **Legs:** First protarsomere 2.0–3.0× as long as second, first mesotarsomere 1.8–2.3× as long as second, first metatarsomere 2.6–3.0× as long as second; metacoxa densely punctate; hind femur constricted basally and apically, expanded medially to about width of coxa; without external carina ventrally; internal ventral carina with small subapical acuminate spine about half as long as width of tibial base; hind tibia straight, enlarged, with only mesal and ventral carinae; tibial corona with 4 spinules, mucro 0.10–0.13× as long as first tarsomere; without sinus at base of spine; first hind tarsomere with ventrolateral glabrous longitudinal carina. **Abdomen:** Pygidium vertical (Fig. 2); last sternite emarginate. **Genitalia:** Median lobe moderately long, ventral valve triangular and deeply arcuate, internal sac with many small spines or needles, without large sclerites (Fig. 3a); lateral lobes elongate, expanded at apex, cleft about 0.53 their length; basal strut an obsolete perpendicular keel (Fig. 3b). **Female** (Fig. 4a–b). Length (pronotum-elytra) 2.4–2.8 mm, width: 1.5–1.7 mm, Maximum thoracic depth 1.6–1.8 mm. Similar to male except antennae serrate; distance between eyes 1.8–2.0× as wide as eye width; pygidium subvertical; last sternite not emarginate.

Material examined. NAMIBIA: Rundu, 28/V/2015, T. Chauke, 17°55'S 19°46'E, reared seed *Glycine max* (L.), intercepted at Pretoria SAAFQIS Plant Quarantine Station, South Africa, Sample Pta. 2811 (1 ex SANC). Caprivi region, 2002, intercepted at Pretoria SAAFQIS Plant Quarantine Station, South Africa (70 ex SANC). **AFRICA:** Intercepted at USA, 36/XII/2003, reared seed *Phaseolus* sp. (3 ex, FSCA); Intercepted at Atlanta, USA, 10/IX/2006, reared seed *Phaseolus vulgaris* L. (1 ex., FSCA). **DEMOCRATIC REPUBLIC OF THE CONGO:** N of Shaba Province, 28/III/1980, Whitecomb W.H., in cowpeas (1 ex., FSCA). **NIGERIA:** Intercepted at USA, 2/II/2004, *Phaseolus* sp. (7 ex., FSCA); Intercepted at USA, 3/II/2004, reared seed *Phaseolus* sp. (2 ex., CEAM). **MEXICO:** Ocolome, El Fuerte, Sinaloa, 21/I/2013, Lugo G.G.A., reared seed *Vigna unguiculata* (L.) WALP. (190 ex., CEAM).

Host plants. *Dolichos lablab* L., *Glycine max* (L.), *Phaseolus vulgaris* L. *Vigna unguiculata* (L.) Walp., *Vigna unguiculata* subsp. *stenophylla* (Harv.) Maréchal & Al., *Vigna unguiculata* subsp. *unguiculata* (L.)Walp. (Fabaceae). Zacher (1952) stated that *Lablab niger* Medik. and *Medicago sativa* L. are plant hosts of *D. atrolineatus*, however this information must be corroborated.

Distribution. Algeria, Angola, Brazil, Burkina Faso, Cameroon, Central African Republic, Democratic Republic of the Congo, Egypt, Ethiopia, Gambia, Ghana, Jamaica, Kenya, Liberia, Mali, Mexico, Mozambique, Namibia, Niger, Nigeria, South Africa, Saudi Arabia, Senegal, Sudan, Tanzania, Uganda, United Kingdom, Yemen, Zanzibar.

Discussion. *Decellebruchus atrolineatus* has high economic importance, because it is a pest mainly in species in the genus *Vigna*. It is frequently found together with *Callosobruchus maculatus* (F.). Large losses due to this insect are reported frequently in some countries of Africa, where those bruchids are endemic (Booker 1967, Germain et al. 1987, Ofuya and Credland 1996, Sanon et al. 2005).



Figure 2. Male pygidium of *Decellebruchus atrolineatus*.

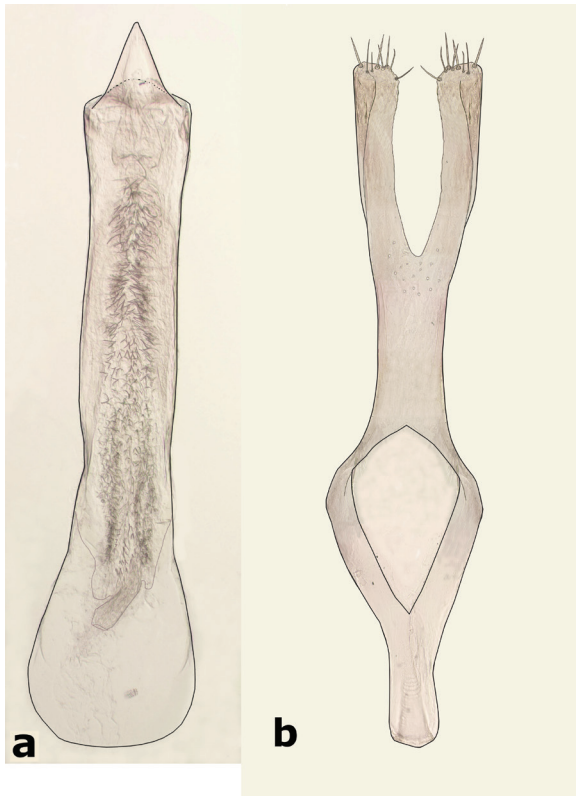


Figure 3. Male genitalia of *Decellebruchus atrolineatus*; **a** median lobe **b** lateral lobes.

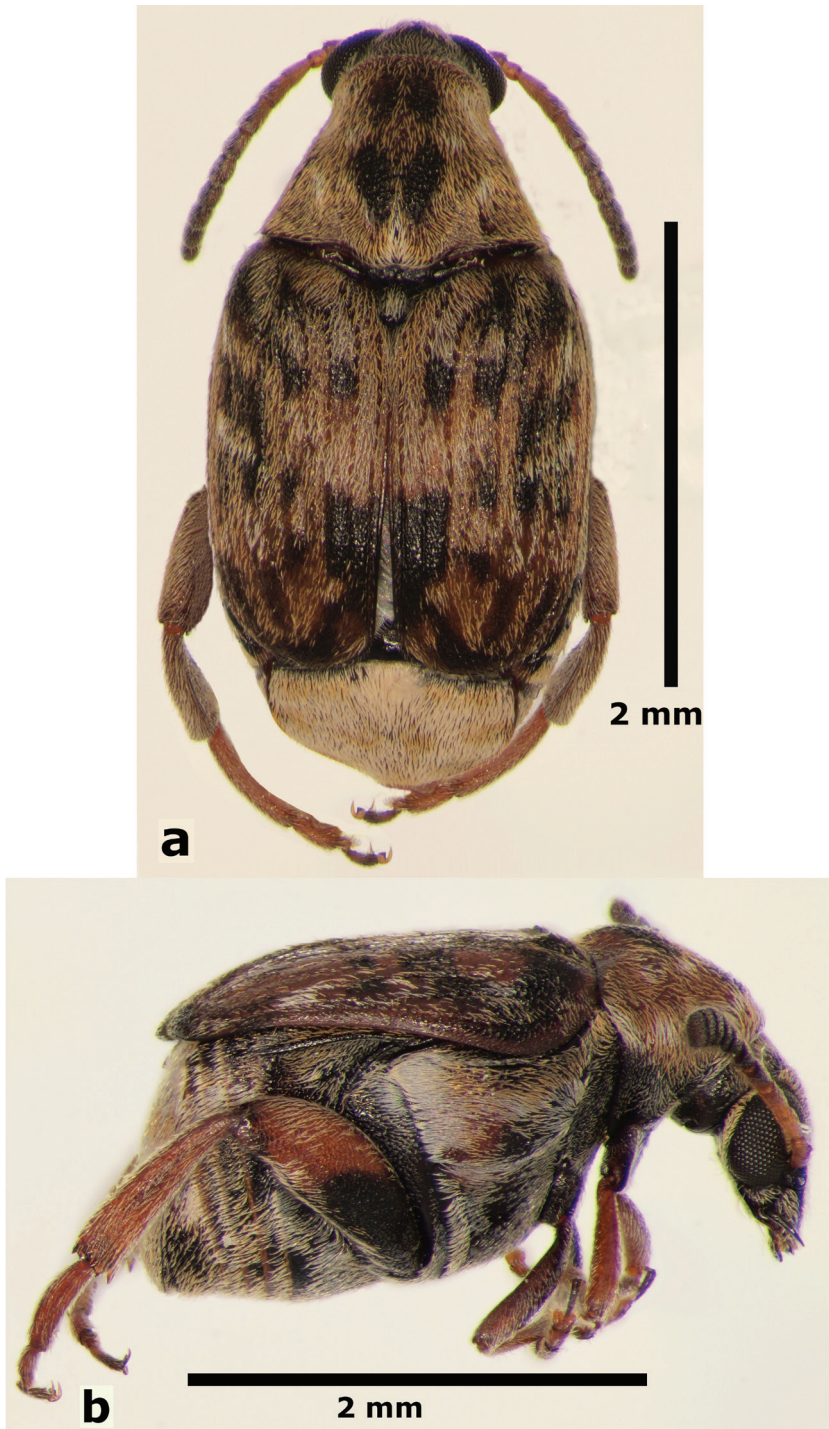


Figure 4. Female habitus of *Decellebruchus atrolineatus*; **a** dorsal view **b** lateral view.

***Decellebruchus lunae* Romero, sp. n.**

<http://zoobank.org/4156F64D-289A-4C0E-BA2A-18A7FBD80F10>

Type series. Holotype male, allotype female and two paratypes: M. Elgon, **KENYA**, 20/I/1979, 1900 m, Palm T. (MZLU), one paratype same data, except 22/I/1979, 2010 m (MZLU). One paratype: Kingsburg beach, Natal, **SOUTH AFRICA**, 10/IV/1992, O'Brien C.W., L.B. O'Brien & G. Marshall (CEAM).

Description. Male (Fig. 5a–b). Length (pronotum-elytra): 2.0–2.13 mm; width: 1.13–1.25 mm; maximum thoracic depth 1.1–1.2 mm. **Color:** Antennae with first four segments and apex of last one yellowish, the rest dark or partially dark; body dark, except fore legs, middle legs, elytra, tibiae and tarsi of posterior legs yellowish; however, some specimens may vary from all body yellowish to dark. **Vestiture:** Body with mixed black, yellowish, and white pubescence; fore coxa with a tuft of white setae; pygidium with basal central spot of white pubescence. **Head:** Short and broad, densely micropunctulate, frons with a strong median carina, distance between eyes 1.95–2.8× as wide as eye width, eye cleft 0.60–0.71× its length by ocular sinus, posterior margin of eye protruding from adjacent surfaces, postocular lobe rounded and setose; distance from base of antennae to apex of labrum 0.45–0.53× as long as distance from upper limits of eyes to apex of labrum; antennomeres I–III filiform, IV subserrate, V–XI pectinate; antennomere II 2–2.0× as long as antennomere I; antennomere VII 1.76–2.0× wider than long; antenna extending to mid body. **Prothorax:** Subconical, without lateral carina; densely foveolate, disc convex, indistinctly gibbous before scutellum and without shallow median channel; prosternal process narrow, triangular, acute, half as long as procoxae. **Meso- and metathorax:** Scutellum square, bidentate apically; elytra with strial punctures wider than the stria, striae 4 and 5 abbreviated basally by tubercle, humeri slightly raised. **Legs:** First protarsomere 1.33–1.79× as long as second, first mesotarsomere 2.0–2.1× as long as second, first metatarsomere 2.6–3.2× as long as second; metacoxa densely punctate; hind femur constricted basally and apically, expanded medially to about width of coxa; without external carina ventrally; internal ventral carina with subapical acuminate spine about as long as width of tibial base; hind tibia straight, enlarged, with complete set of carinae; tibial corona with one spinule, the others obsolete, mucro 0.18–0.24× as long as first tarsomere; without sinus at base of spine; first hind tarsomere with ventrolateral glabrous longitudinal carina. **Abdomen:** Pygidium vertical (Fig. 6); last sternite emarginate. **Genitalia:** Median lobe moderately long, ventral valve triangular and deeply arcuate, internal sac lined with many small spines, basal portion with a dentiform sclerite and a small spinules forming a triangle (Fig. 7a); lateral lobes elongate, expanded at apex, cleft about 0.73 their length; basal strut with a strong perpendicular keel (Fig. 7b). **Female** (Fig. 8a–b). Length (pronotum-elytra) 1.85–2.05 mm, width: 1.12–1.3 mm, Maximum thoracic depth 0.95–1.41 mm. Similar to male except antennae serrate; pygidium subvertical; last sternite not marginate.

Host plant. Unknown.

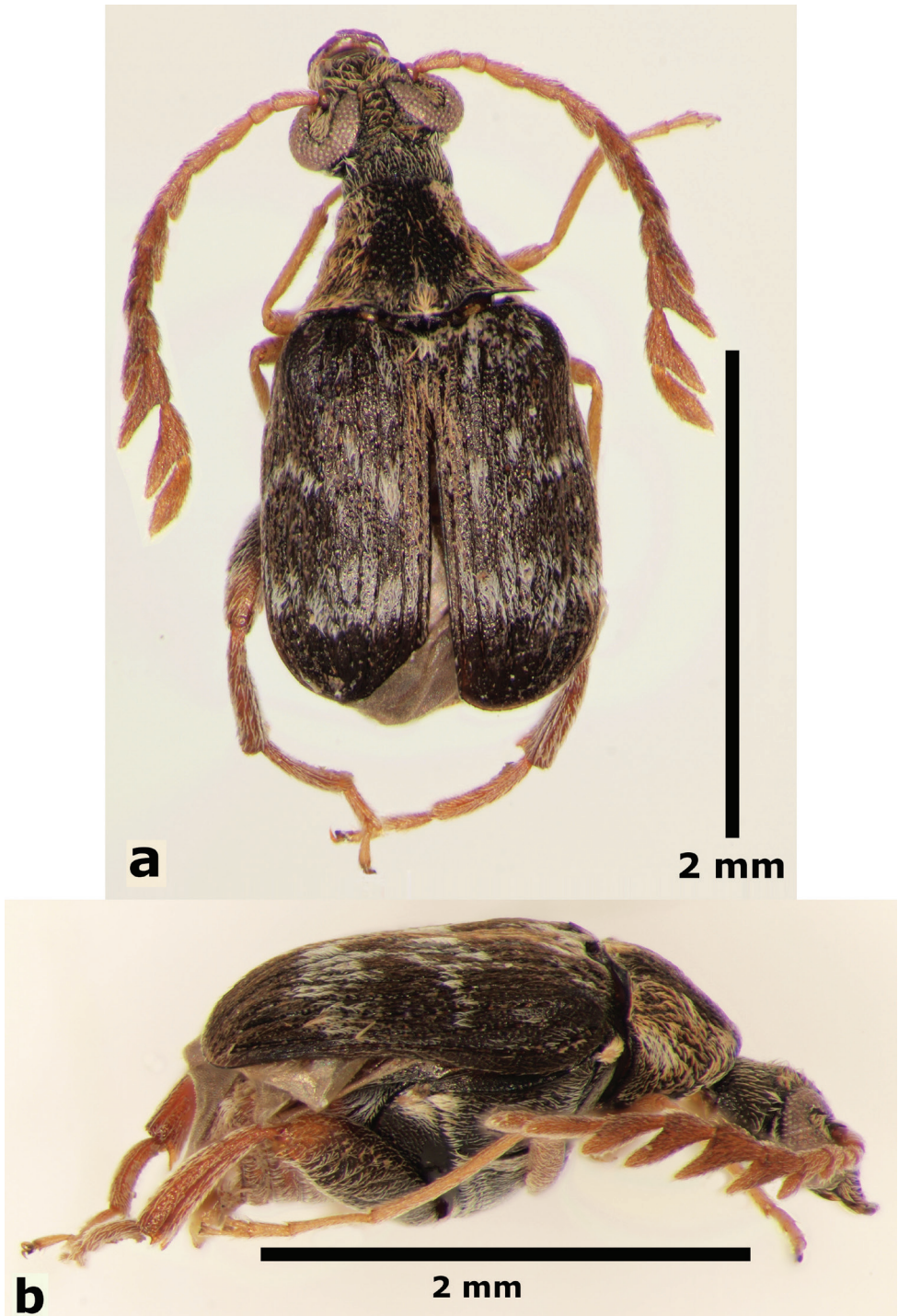


Figure 5. Male habitus of *Decellebruchus lunae*; **a** dorsal view **b** lateral view.

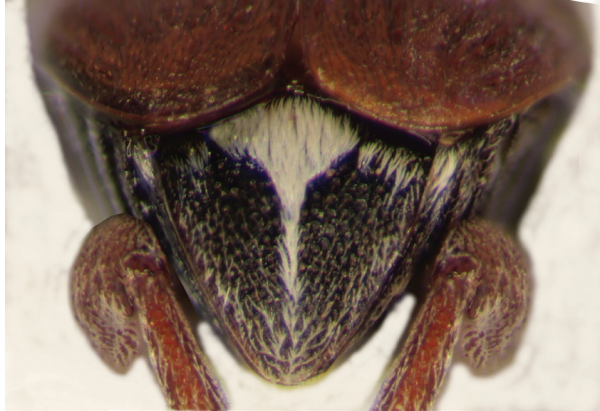


Figure 6. Male pygidium of *Decellebruchus lunae*.

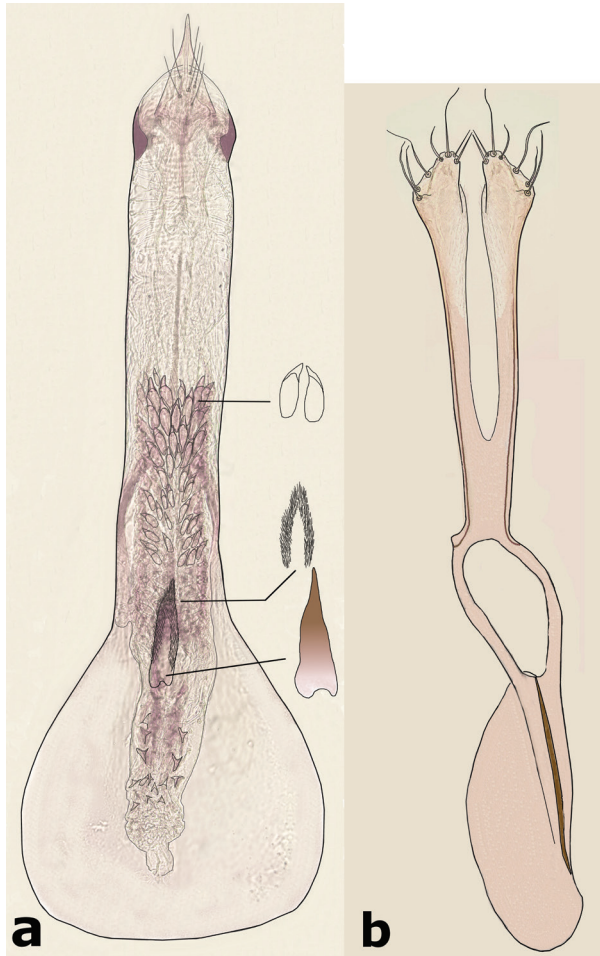


Figure 7. Male genitalia of *Decellebruchus lunae*; **a** median lobe **b** lateral lobes.

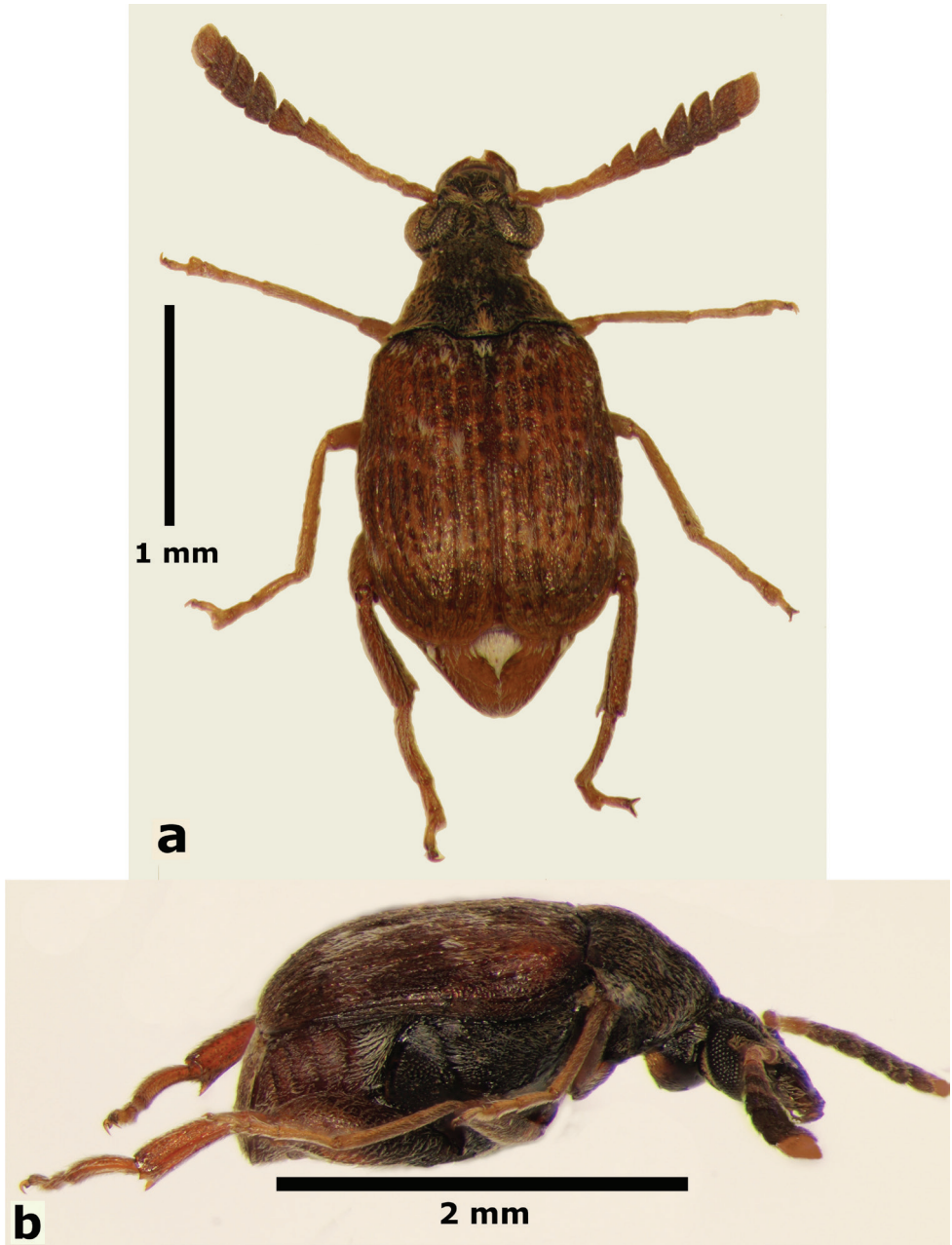


Figure 8. Female habitus of *Decellebruchus lunae*; **a** dorsal view **b** lateral view.

Distribution. Kenya and South Africa.

Etymology. The specific epithet honors the granddaughter of the author, Luna Nereida Nila Romero.

Diagnosis. This species is included in the genus *Decellebruchus* because it presents all characters indicated in the diagnosis of the genus; also it can be separated from the other two species in the genus because the typical male pygidium, less strongly male antennae, unique armature of the internal sac of male genitalia, and lateral lobes of which bear a basal strut with a strong perpendicular keel.

Decellebruchus walkeri (Pic, 1912)

Bruchus figuratus Walker, 1859: 261 (homonymy); Pic 1913: 57; Decelle 1975b: 184; Vazirani 1975: 746; Decelle 1985: 75.

Bruchus walkeri Pic, 1912: 92 (replacement name), 1913: 57; Decelle 1975b: 184; Vazirani 1975: 746; Decelle 1985: 76.

Bruchidius walkeri: Decelle 1975b: 184; Decelle 1985: 75.

Spermophagus figuratus: Motschulsky 1863: 519; Decelle 1975b: 185;

Description. Male (Fig. 9a–b). Length (pronotum-elytra): 1.77–2.1 mm; width: 1.27–1.37 mm; maximum thoracic depth 1.07–1.32 mm. **Color:** Antennae with the first five segments and apex of the last one yellowish, the rest dark or partially dark; body dark, except fore legs, middle legs, part of elytra, and ventral portion of femora; however some specimens may vary from all body yellowish to dark. **Vestiture:** Body with mixed black, yellowish, and white pubescence; fore coxa with a tuft of white setae; pygidium with three basal spots of white pubescence, the lateral ones bigger than median. **Head:** Short and broad, densely micropunctulate, frons with a strong median carina, distance between eyes 1.53–3.3× as wide as eye width, eye cleft 0.57–0.8× its length by ocular sinus, posterior margin of eye protruding from adjacent surfaces, postocular lobe rounded and setose; distance from base of antennae to apex of labrum 0.38–0.47× as long as distance from upper limits of eyes to apex of labrum; antennomeres I–III filiform, IV subserrate, V–XI pectinate; antennomere II 2–2.0× as long as antennomere 11; antennomere VII 4.75–6.67× wider than long; antenna extending to mid body. **Prothorax:** Subconical, without lateral carina; densely foveolate, disc convex, lightly gibbous before scutellum and without shallow median channel; prosternal process narrow, triangular, acute, half as long as procoxa. **Meso- and metathorax:** Scutellum square, bidentate apically; elytra with striae punctures as wide as the stria, striae 4 and 5 abbreviated basally by tubercle, humeri slightly raised. **Legs:** First protarsomere 1.45–1.7× as long as second, first mesotarsomere 1.92–2.6× as long as second, first metatarsomere 2.86–3.4× as long as second; metacoxa densely punctate; hind femur constricted basally and apically, expanded medially to about width of metacoxa; without external carina ventrally; internal ventral carina with subapical acuminate spine about as long as width of tibial base, followed by 2 smaller spines; hind tibia straight, enlarged, with complete set of carinae; tibial corona with 4 spinules, mucro 0.11–0.16× as long as first tarsomere; without sinus at base of spine; first hind tarsomere with ventrolateral glabrous lon-

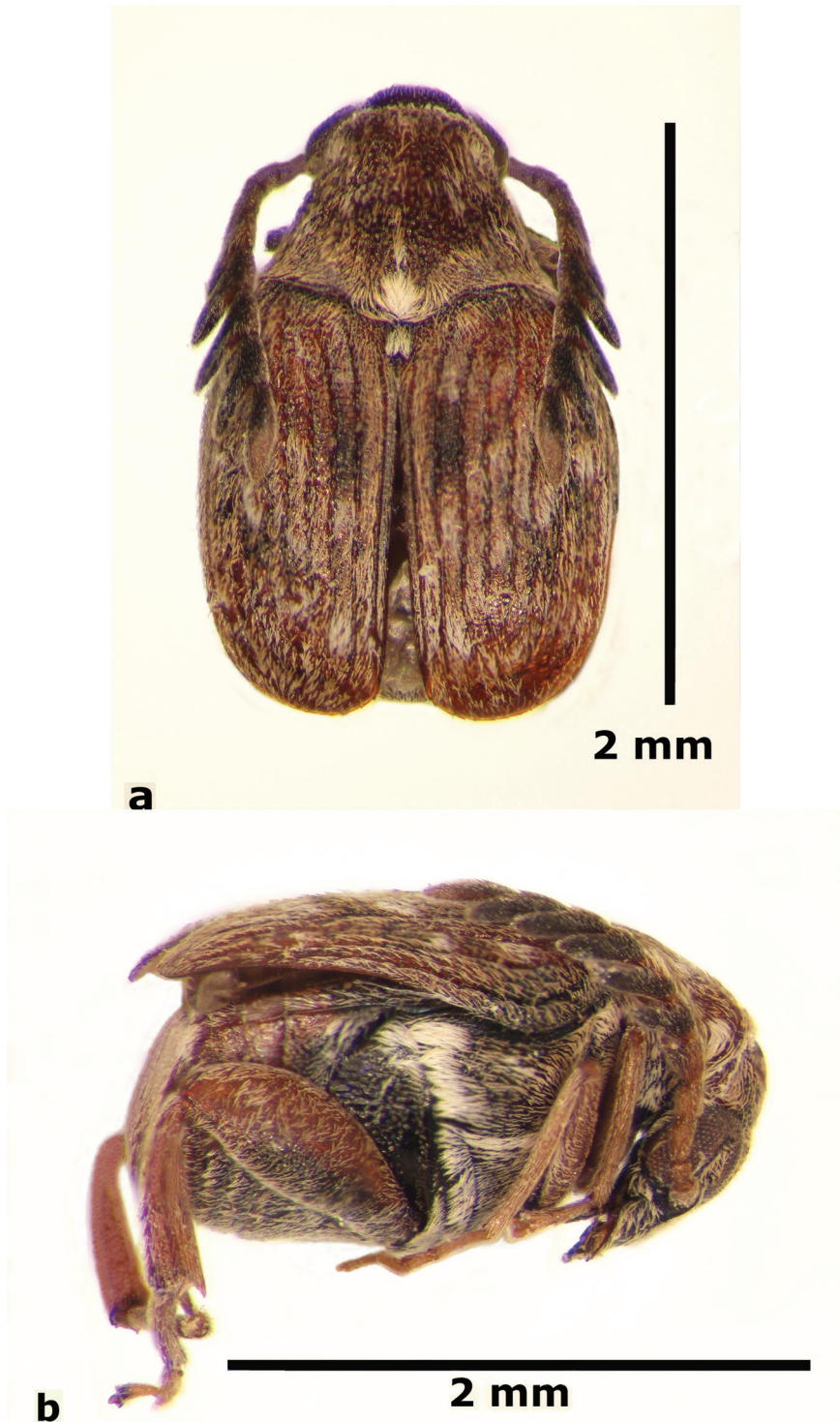


Figure 9. Male habitus of *Decellebruchus walkeri*; **a** dorsal view **b** lateral view.

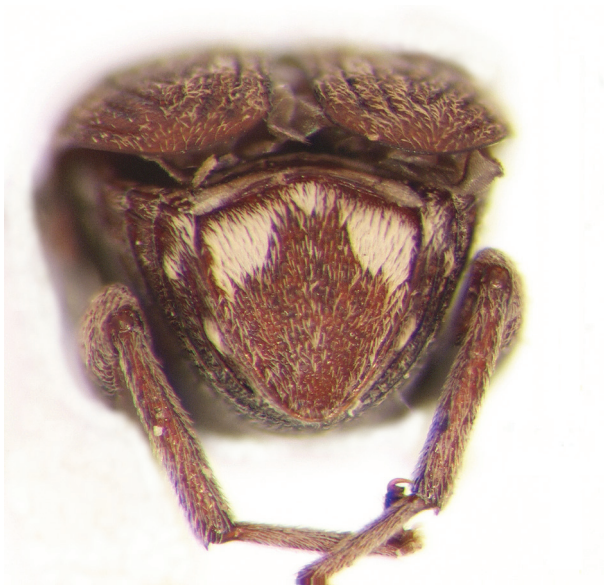


Figure 10. Male pygidium of *Decellebruchus walkeri*.

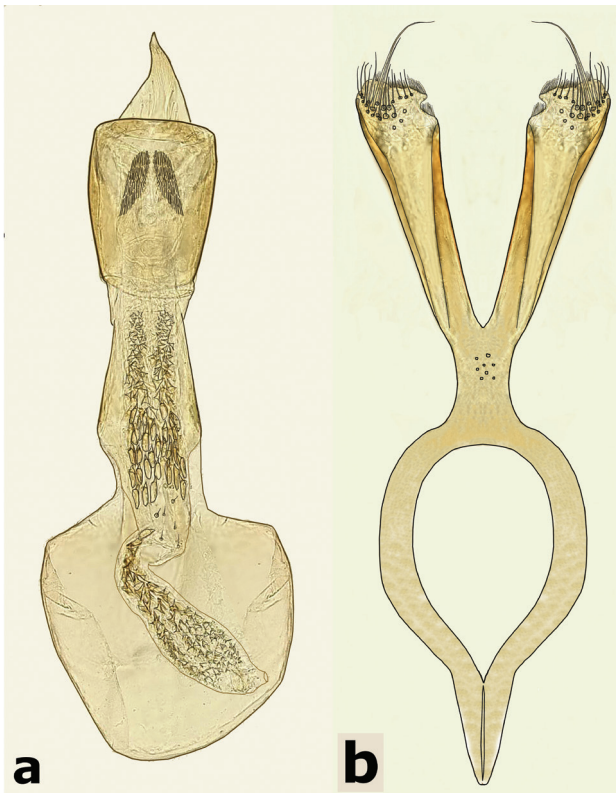


Figure 11. Male genitalia of *Decellebruchus walkeri*; **a** median lobe **b** lateral lobes.

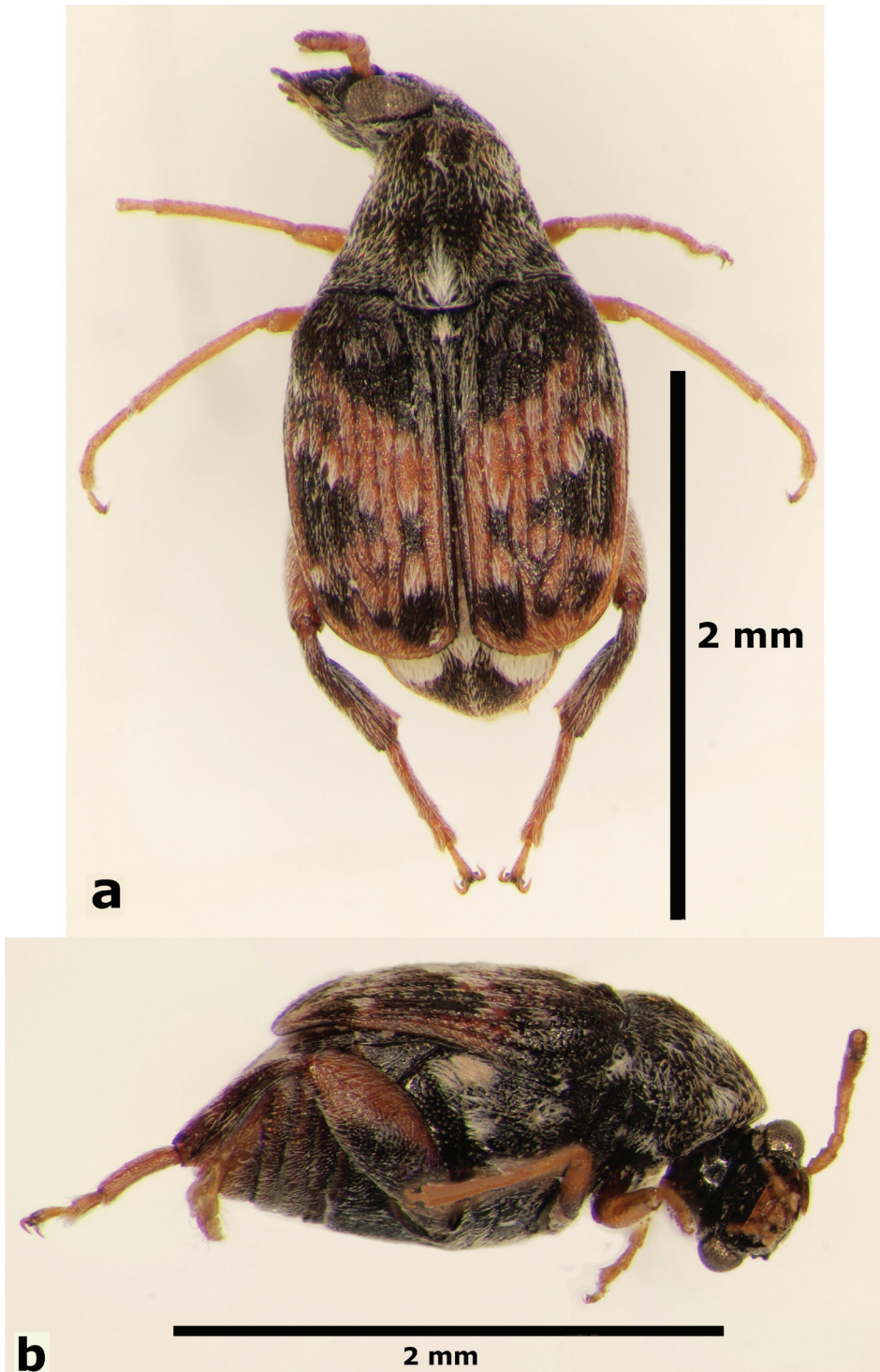


Figure 12. Female habitus of *Decellebruchus walkeri*; **a** dorsal view **b** lateral view.

gitudinal carina. **Abdomen:** Pygidium vertical (Fig. 10); last sternite emarginate. **Genitalia:** Median lobe moderately long, ventral valve triangular and deeply arcuate, internal sac lined with many small spines, basal portion with a small spinules forming a triangle (Fig. 11a); lateral lobes elongate, expanded at apex, cleft about 0.66 their length; basal strut with small perpendicular keel (Fig. 11b). **Female** (Fig. 12a–b). Length (pronotum-elytra) 1.95–2.8 mm, width: 1.25–1.8 mm, Maximum thoracic depth 1.12 mm. Similar to male except antennae serrate; pygidium subvertical; last sternite not marginate.

Material examined. INDIA: Maharashtra, Lonavla, 28/IV/2000, 650 m, Pacholatko P. (1 ex., CEAM). KENYA: M. Elgon, 24/I/1979, 1950 m, Palm T. (1 ex., MZLU). SRI LANKA: Vayiriuttu, 5 mi W Trincomalee, Eastern Prov., 9/II/1962, Lund University Ceylon Expedition, sweeping at teak plantation (1 ex., MZLU); Kuda Oya, 15 mi S Wellawaya, Uva Prov., 22/III/1962, Brinck, Andersson & Cederholm (2 ex., MZLU); Yakkala, 18 mi NE Colombo Western Prov., 26/III/1962, Brinck, Andersson & Cederholm, swept on vegetation at ditches in paddy fields (1 ex., MZLU).

Host plant. Unknown.

Distribution. India, Kenya, Sri Lanka, Thailand.

Discussion. There is little information about this species. At this time its host plants are unknown and only a few specimens were available for study; three of which were still named *Bruchidius walkeri*.

Cladistics

A default tree (Fig. 13) and a consensus tree (Fig. 14) were generated with Mesquite (Maddison and Maddison 2015). The shortest and most parsimonious tree obtained with Hennig86 using ie- algorithm is shown in Fig. 15. This tree was the shortest and the most parsimonious with a length of 33, consistency index of 87, and retention index of 81. In total, this cladogram was formed by 26 synapomorphies, 8 parallelisms, and 3 reversals. The tree generated with Hennig86 seems the most reliable to explain the phylogenetic hypothesis about of bruchids with pectinate antennae where males and females share the character; however, the consensus tree generated with Mesquite program has similarities with the Hennig86 tree.

In the cladogram in Figure 15 can be seen that each one of the clades corresponds to a different taxon of the family Bruchidae and one of the richest in terms of the number of genera was the Acanthoscelidini clade. This cladogram also supports the hypothesis of host preference, for example the species of the clade Pachymerini feed on seeds of the Areaceae (palms), Megacerini on seeds of the Convolvulaceae, and Acanthoscelidini on seeds of the Fabaceae.

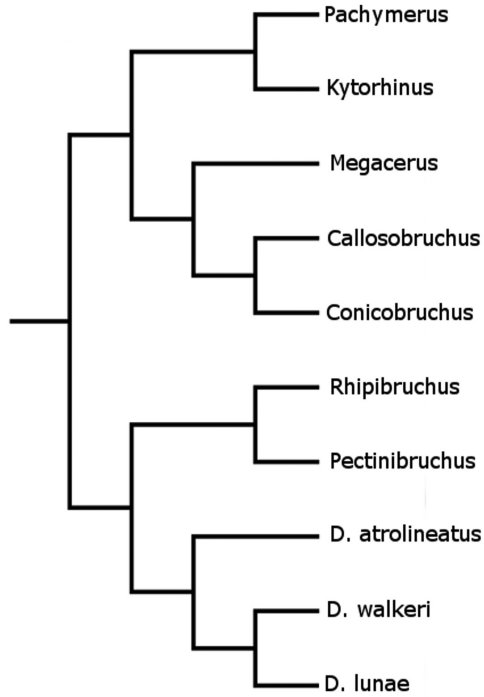


Figure 13. Default tree generated with Mesquite program.

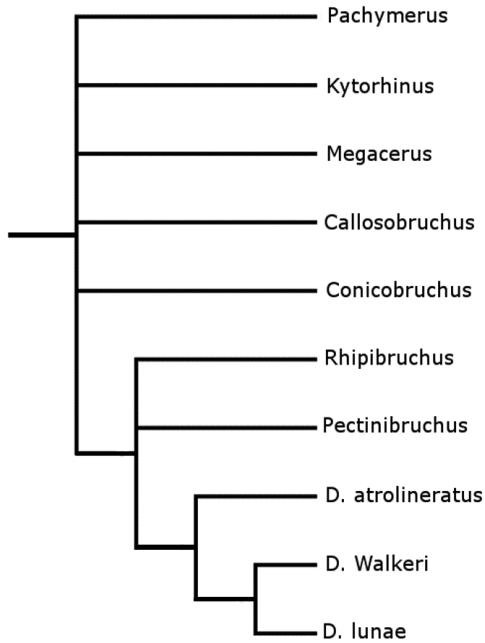


Figure 14. Consensus tree generated with Mesquite program.

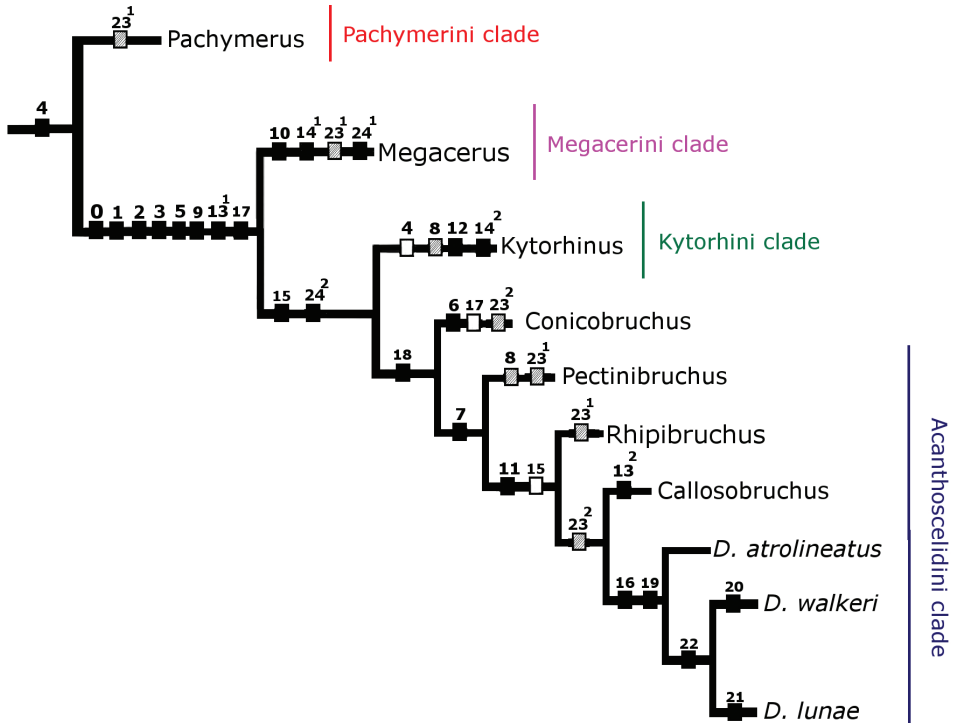


Figure 15. Phylogenetic tree generated with Hennig86 program.

Acknowledgments

I thank the following museum curators: Elizabeth Grobbelaar, South African National Collection of Insects; Paul E. Skelly, Florida State Collection of Arthropods, and Christoffer Fägerström, Musée Zoologique de l'Université de Lund, Lund University; also Richard L. Westcott, Salem, Oregon, USA and Thomas H. Atkinson, University of Texas for reviewing the manuscript.

References

- Anton KW (1994) The Bruchidae (Coleoptera) of Saudi Arabia, with descriptions of two new species. *Fauna of Saudi Arabia* 14: 97–104.
- Biemont JC, Chauvin G, Germain JF (1982) L'oeuf de *Bruchidius atrolineatus* (Pic) et son système de fixation. *Canadian Journal of Zoology* 60: 2610–2615. doi: 10.1139/z82-335
- Blackwelder RE (1946) Checklist of the coleopterous insects of Mexico, Central America, the West Indies, and South America. *Bulletin of The United States National Museum* 185(4): 551–763. doi: 10.5479/si.03629236.185.4

- Bondar G (1936) Notas biológicas sobre Bruchideos observados no Brazil. Rio de Janeiro Instituto de Biologia Vegetal. Arquivos 3(1): 7–44.
- Booker RH (1967) Observations on three bruchids associated with cowpea in northern Nigeria. *Journal of Stored Products Research* 3: 1–15. doi: 10.1016/0022-474X(67)90082-3
- Borowiec L (1987) The genera of seed-beetles (Coleoptera, Bruchidae). *Polskie Pismo Entomologiczne* 57: 3–207.
- Credland PF (1992) The structure of bruchid eggs may explain the ovicidal effect of oils. *Journal of Stored Products Research* 28(1): 1–9. doi: 10.1016/0022-474X(92)90025-L
- Decelle J (1951) Contribution a l'étude des Bruchidae du Congo belge (Coleoptera: Phytophaga). *Revue de zoologie et de botanique africaines* 45: 172–192.
- Decelle J (1961) Bruchidae (Coleoptera, Phytophagoidea). *Parc National Albert- Mission G. F. Witte (1933–1935)* 97(2): 5–10.
- Decelle J (1975a) Les Coleopteres Bruchides d'Angola. *Publicacoes culturais da Companhia de Diamantes de Angola* 98: 13–32.
- Decelle J (1975b) Coleoptera: Bruchidae de Ceylan. *Entomologica Scandinavica Supplement* 4: 179–194.
- Decelle J (1985) Synonymies et distribution géographique de Bruchidae (Coleoptera) asiatiques. *Bulletin & Annales de la Societe Royale Belge d'Entomologie* 121: 75–79.
- Farris JS (1988) Hennig86 reference. Version 1.5. Documentation.
- Germain JF, Monge JP, Huignard J (1987) Development of two bruchid populations (*Bruchidius atrolineatus* (Pic) and *Callosobruchus maculatus* (Fab.)) infesting stored cowpea (*Vigna unguiculata* Walp) pods in Niger. *Journal of Stored Products Research* 23(3): 157–162. doi: 10.1016/0022-474X(87)90045-2
- Glitho IA, Huignard J (1990) A histological and ultrastructural comparison of the male accessory reproductive glands of diapausing and non-diapausing adults in *Bruchidius atrolineatus* (Pic) (Coleoptera: Bruchidae). *International Journal of Insect Morphology and Embryology* 19: 195–209. doi: 10.1016/0020-7322(90)90005-A
- Hamon C, Biemont JC, Chauvin G (1982) Ultrastructure et fonction secretrice des cellules de la paroi oviductes lateraux chez *Acanthoscelides obtectus* Say (Coleoptera: Bruchidae). *International Journal of Insect Morphology and Embryology* 11: 327–339. doi: 10.1016/0020-7322(82)90021-6
- Huignard J, Monge JP, Germain JF (1989) Influence of thermoperiodic variations on the induction of the reproductive diapause of *Bruchidius atrolineatus* (Pic) (Coleoptera: Bruchidae). In: Tonner M, Soldan T, Bennetova B (Eds) *Regulation of Insect Reproduction*. IV Academia Praha, Praha, 197–207.
- Ishihara M, Shimada M (1995) Photoperiodic induction of larval diapause and temperature-dependent termination in a wild multivoltine bruchid, *Kytorhinus sharpianus*. *Entomologia Experimentalis et Applicata* 75: 127–134. doi: 10.1111/j.1570-7458.1995.tb01918.x
- Kergoat GJ, Delobel A, Fédière G, Le Rü B, Silvain JF (2005) Both host-plant phylogeny and chemistry have shaped the African seed-beetle radiation. *Molecular Phylogenetics and Evolution* 35: 602–611. doi: 10.1016/j.ympev.2004.12.024
- Kingsolver JM (1970) A study of male genitalia in Bruchidae (Coleoptera). *Proceedings of the Entomological Society of Washington* 72(3): 370–386.

- Kingsolver JM, Silva P (1991) Update of scientific names of Bruchidae (Coleoptera) listed by Bondar in “Notas Biológicas” (1931 and 1936). *Anais da Sociedade Entomologica do Brasil* 20(2): 411–415.
- Kingsolver JM (1988) Pests not known to occur in the United States, or of limited distribution, no. 95: African Cowpea Bruchid with a key to Bruchidae of sored pulses. APHIS-PPQ 81–53, U.S. Department of Agriculture, 1–10.
- Lenga A, Monge JP, Huignard J (1990) Role des facteurs thermiques dans l’induction de la diapause reproductrice chez *Bruchidius atrolineatus* Pic (Col: Bruchidae). *Regulation des cycles saisonniers chez les Invertébrés*. Dourdan (France). Ed. INRA, 79–83.
- Lobl I, Smetana A (2010) *Catalogue of Palearctic Coleoptera*. Vol. 6. Chrysomeloidea. Apollo Books, 339–353.
- Luca Y de (1968a) A propos de *Bruchidius atrolineatus* (Pic) (Coleoptera: Bruchidae). *Nouvelle description et remarques*. *Bulletin de l’I.F.A.N.* T. XXX, sér. A, 1: 188–199.
- Luca Y de (1968b) La larve neonate de *Bruchidius atrolineatus* (Pic) (Coleoptera: Bruchidae). *Bulletin de l’I.F.A.N.* T. XXX, sér. A, 2: 589–592.
- Maddison WP, Maddison DR (2015) *Mesquite: a modular system for evolutionary analysis*. Version 3.04. <http://mesquiteproject.org>
- Monge JP, Germain JF, Huignard J (1988) Importance des variations thermiques sur l’induction de la diapause reproductrice chez *Bruchidius atrolineatus* Pic (Coleoptere Bruchidae). *Acta Oecologica* 9(3): 297–307.
- Monge JP, Lenga A, Huignard J (1989) Induction of reproductive diapause in *Bruchidius atrolineatus* during the dry season in a Sahelian zone. *Entomologia Experimentalis et Applicata* 53: 95–104. doi: 10.1111/j.1570-7458.1989.tb01292.x
- Motschulsky TV (1863) *Essai d’un catalogue des insectes de l’île Ceylan*. *Bulletin de la Société Impériale des Naturalistes de Moscou* 36: 412–532.
- Ofuya TI, Credland PF (1996) The Ability of *Bruchidius atrolineatus* (Pic) (Coleoptera: Bruchidae) to infest and damage seeds of different tropical legumes. *Journal of Stored Products Research* 32(4): 323–328. doi: 10.1016/S0022-474X(97)87176-7
- Pic M (1912) Renseignements généraux sur les Bruchidae. *L’Echange* 28: 91–93.
- Pic M (1913) *Bruchidae*. *Coleopterorum Catalogus*. W. Junk, Berlin 55: 1–74.
- Pic M (1921) Diagnoses de Coleopteres exotiques. *L’Echange* 37: 15–16.
- Pic M (1932) Nouveautés diverses. *Mélanges Exotico-Entomologiques* 59: 10–36.
- Pfaffenberger GS (1985) Checklist of selected world species of described first and/or final larval instars. *Coleopterists Bulletin* 39(1): 1–6.
- Pfaffenberger GS, Monge JP (1991) Redescription of the larvae of *Bruchidius atrolineatus* (Pic) (Coleoptera: Bruchidae: Bruchinae). *Coleopterists Bulletin* 45(4): 309–316.
- Pichard B, Leroi B, Bonet A (1991) Comparaison des cycles d’*Acanthoscelides obtectus* et d’*A. obvelatus* (Coleopteres: Bruchidae) a Tepoztlan (Mexique). *Acta Oecologica* 12(2): 185–201.
- Pouzat J, Nammour D (1989) Electrophysiological investigations of sex pheromone reception and release in *Bruchidius atrolineatus*. *Physiological Entomology* 14: 319–324.
- Prevelt PF (1961) Field infestation of cowpea (*Vigna unguiculata*) pods by beetles of the families Bruchidae and Curculionidae in northern Nigeria. *Bulletin of Entomological Research* 52(4): 635–645. doi: 10.1017/S0007485300055668

- Prevelt PF (1967) Notes on the biology, food plants & distribution of Nigerian Bruchidae (Coleoptera), with particular reference to the northern region. Bulletin of the Entomological Society of Nigeria 1: 3–6.
- Prevelt PF (1971) The larva of some Nigerian Bruchidae (Coleoptera). Transactions of the Royal Entomological Society of London 123(3): 247–312. doi: 10.1111/j.1365-2311.1971.tb00845.x
- Romero J, Johnson CD (1999) *Zabrotes sylvestris*, a new species from the United States and Mexico related to *Z. subfasciatus* (Boheman) (Coleoptera: Bruchidae: Amblycerinae). Coleopterists Bulletin 53(1): 87–98.
- Sanon A, Dabiré C, Ouedraogo AP, Huignard J (2005) Field occurrence of bruchid pests of cowpea and associated parasitoids in a sub humid zone of Burkina Faso: Importance on the infestation of two cowpea varieties at harvest. Plant Pathology Journal 4(1): 14–20. doi: 10.3923/ppj.2005.14.20
- Shimada M, Ishihara M (1991) Two types of overwintering larvae in a wild multivoltine bruchid, *Kytorhinus sharpianus* Bridwell (Coleoptera: Bruchidae). Applied Entomology and Zoology 26(3): 289–297.
- Shomar NF (1963) A monographic revision of the Bruchidae of Egypt (U.A.R.) (Coleoptera). Bulletin of the Entomological Society of Egypt 47: 141–196.
- Southgate BJ (1978) The importance of the Bruchidae as pests of grain legumes, their distribution and control. In: Singh SR, van Emden HF, Ajibola TT (Eds) Pests of Grain Legumes: Ecology and Control. Academy Press, London, 219–229.
- Udayagiri S, Wadhi SR (1989) Catalog of Bruchidae. Memoirs of the American Entomological Institute 45: 1–301.
- Vazirani TG (1975) A contribution to the knowledge of Oriental Bruchidae. Journal of the Bombay Natural History Society 72(3): 740–757.
- Walker F (1859) XXVII-Characters of some apparently undescribed Ceylon insects. The Annals and Magazine of Natural History Vol. III, 3rd series: 258–265.
- Zacher F (1952) Die Nährpflanzen der Samenkäfer. Zeitschrift für angewandte Entomologie 33: 460–480.