



Observational Study

Factors predicting upstaging from clinical N0 to pN2a/N3a in breast cancer patients

Goshi Oda, Tsuyoshi Nakagawa, Hiroki Mori, Iichiro Onishi, Tomoyuki Fujioka, Mio Mori, Kazunori Kubota, Ryoichi Hanazawa, Akihiro Hirakawa, Toshiaki Ishikawa, Kentaro Okamoto, Hiroyuki Uetakeszsz

Specialty type: Surgery

Provenance and peer review:

Unsolicited article; Externally peer reviewed.

Peer-review model: Single blind

Peer-review report's scientific quality classification

Grade A (Excellent): 0

Grade B (Very good): B, B

Grade C (Good): C, C, C

Grade D (Fair): 0

Grade E (Poor): 0

P-Reviewer: Ding JX, China; Hou L, China; Mao JH, United States

Received: May 25, 2022

Peer-review started: May 25, 2022

First decision: July 13, 2022

Revised: July 25, 2022

Accepted: September 6, 2022

Article in press: September 6, 2022

Published online: September 24, 2022



Goshi Oda, Tsuyoshi Nakagawa, Department of Breast Surgery, Tokyo Medical and Dental University, Tokyo 1138519, Japan

Hiroki Mori, Department of Plastic and Reconstructive Surgery, Tokyo Medical and Dental University, Tokyo 1138519, Japan

Iichiro Onishi, Department of Pathology, Tokyo Medical and Dental University, Tokyo 1138519, Japan

Tomoyuki Fujioka, Mio Mori, Kazunori Kubota, Department of Radiology, Tokyo Medical and Dental University, Tokyo 1138519, Japan

Ryoichi Hanazawa, Akihiro Hirakawa, Department of Clinical Biostatistics, Tokyo Medical and Dental University, Tokyo 1138519, Japan

Toshiaki Ishikawa, Kentaro Okamoto, Hiroyuki Uetakeszsz, Department of Specialized Surgeries, Tokyo Medical and Dental University, Tokyo 1138519, Japan

Corresponding author: Goshi Oda, MD, PhD, Assistant Lecturer, Doctor, Department of Breast Surgery, Tokyo Medical and Dental University, 1-5-45 Yushima, Bunkyo-ku, Tokyo 1138519, Japan. odasrg2@tmd.ac.jp

Abstract

BACKGROUND

With sentinel node metastasis in breast cancer (BC) patients, axillary lymph node (ALN) dissection is often omitted from cases with breast-conserving surgery. Omission of lymph node dissection reduces the invasiveness of surgery to the patient, but it also obscures the number of metastases to non-sentinel nodes. The possibility of finding ≥ 4 lymph nodes (pN2a/pN3a) preoperatively is important given the ramifications for postoperative treatment.

AIM

To search for clinicopathological factors that predicts upstaging from N0 to pN2a/pN3a.

METHODS

Patients who were sentinel lymph node (SLN)-positive and underwent ALN

dissection between September 2007 and August 2018 were selected by retrospective chart review. All patients had BC diagnosed preoperatively as N0 with axillary evaluation by fluorodeoxyglucose (FDG) positron emission tomography/computed tomography and ultrasound (US) examination. When suspicious FDG accumulation was found in ALN, the presence of metastasis was reevaluated by second US. We examined predictors of upstaging from N0 to pN2a/pN3a.

RESULTS

Among 135 patients, we identified 1-3 ALNs (pN1) in 113 patients and ≥ 4 ALNs (pN2a/pN3a) in 22 patients. Multivariate analysis identified the total number of SLN metastasis, the maximal diameter of metastasis in the SLN (SLNDmax), and FDG accumulation of ALN as predictors of upstaging to pN2a/pN3a.

CONCLUSION

We identified factors involved in upstaging from N0 to pN2a/pN3a. The SLNDmax and number of SLN metastasis are predictors of ≥ 4 ALNs (pN2a/pN3a) and predictors of metastasis to non-sentinel nodes, which have been reported in the past. Attention should be given to axillary accumulations of FDG, even when faint.

Key Words: Breast cancer; Axillary lymph node metastasis; Positron emission tomography/computed tomography; Sentinel lymph node; Predictive factors of lymphnode metastasis; Standardized uptake value max; Diameter of sentinel lymphnode metastasis

©The Author(s) 2022. Published by Baishideng Publishing Group Inc. All rights reserved.

Core Tip: This is the first report to include the results of preoperative positron emission tomography/computed tomography (PET/CT) and to examine results related to the upstaging of pN2a/pN3a (more than 4 axillary lymph node metastases) in breast cancer (BC) patients. Specifically, 135 patients who were sentinel lymph node (SLN)-positive and underwent ALN dissection were selected by retrospective chart review, all of whom had BC diagnosed preoperatively as N0 with axillary evaluation by fluorodeoxyglucose (FDG) PET/CT and ultrasound. Our results suggest that the size and number of SLN metastases were still important factors. And, attention should be given to axillary accumulations of FDG, even when faint.

Citation: Oda G, Nakagawa T, Mori H, Onishi I, Fujioka T, Mori M, Kubota K, Hanazawa R, Hirakawa A, Ishikawa T, Okamoto K, Uetakeszsz H. Factors predicting upstaging from clinical N0 to pN2a/N3a in breast cancer patients. *World J Clin Oncol* 2022; 13(9): 748-757

URL: <https://www.wjgnet.com/2218-4333/full/v13/i9/748.htm>

DOI: <https://dx.doi.org/10.5306/wjco.v13.i9.748>

INTRODUCTION

Sentinel lymph node (SLN) biopsy is usually performed in N0 cases. If SLN biopsy yields a positive result, an axillary lymph node (ALN) dissection is performed. However, since the publication of findings from the American College of Surgeons Oncology Group (ACOSOG) Z-0011 trial, many cancer centers have been omitting ALN dissection from breast-conserving surgeries[1]. The problem with omitting axillary dissection is that the number of non-SLN metastases cannot be ascertained, which may lead to over or under-treatment with adjuvant chemotherapy and radiation therapy. For example, patients with pN2a [4-9 ALN metastases (ALNMs)] or pN3a (≥ 10 ALNMs) need to be irradiated to not only the residual breast, but also the supraclavicular region after breast-conserving surgery. However, without knowing the number of metastases, no accurate decision on the need for irradiation can be made. Post-mastectomy radiation (PMRT) is also required for pN2a/N3a patients. Some reports have noted that PMRT after reconstruction impairs conformity[2-4]. Further analyses have shown that direct implants and autologous tissue reconstruction have fewer complications from PMRT[5,6]. The ability to predict the necessity of postoperative irradiation before surgery would affect surgical planning, including reconstructive surgery. A variety of factors and nomograms have been reported to allow preoperative prediction of the presence or absence of ALNMs[7-9], but few reports have examined factors predicting the presence of ≥ 4 ALNMs. Preoperative fluorodeoxyglucose (FDG) positron emission tomography (PET)/computed tomography (CT) is reportedly excellent for predicting metastasis preoperatively and may have influenced the prediction of ALNMs in the present study. Although many

papers have described predictors of non-SLN metastasis, few have rigorously assessed ALNM preoperatively using PET/CT. In this study, all patients were evaluated preoperatively by PET/CT, and cases with false-negative results on other imaging modalities were excluded. This is the first report to include the results of preoperative PET/CT and to examine results related to the upstaging of pN2a/pN3a.

MATERIALS AND METHODS

Patients

A retrospective chart review was conducted for patients who were SLN-positive and underwent ALND between September 2007 and August 2018. All patients had breast cancer (BC) diagnosed preoperatively as N0 with axillary evaluation by PET/CT and ultrasound (US) examination. This study was conducted with approval from the institutional review board and with the informed consent of each patient. Axillary dissection was performed in all patients with SLN metastasis > 2 mm in diameter. In the case of total mastectomy, axillary dissection was performed for metastases > 0.2 mm in diameter. A flow chart of the eligible/included patients is shown in [Figure 1](#).

About ultrasound examination

A EUB-7500 scanner with a EUP-L54MA 9.75-MHz linear probe (Hitachi Medical Systems, Tokyo, Japan) or Aplio XG scanner with a PLT-805AT 8.0-MHz linear probe (Toshiba Medical Systems, Tochigi, Japan) was used for US examinations. If ultrasound or PET/CT findings were suspicious for metastatic lymph nodes, cytology was performed.

Protocol for FDG-PET/CT

All patients were intravenously administered ^{18}F -FDG (3.7 MBq/kg; 0.1 mCi/kg) after a minimum 4-h fasting period. Next, whole-body images were routinely obtained using a PET/CT system (Aquiduo; Toshiba Medical Systems, Tokyo, Japan). In addition, CT was performed using the following parameters: pitch factor, 0.938; gantry rotation time, 0.5 s; table time, 30 mm/s; auto-exposure control (SD20), 120 kVp; and slice thickness, 2.0 mm. Notably, contrast media were not used for CT examinations. Approximately 60 min after ^{18}F -FDG administration, whole-body PET was performed using the following parameters: emission time per bed, 2 min; bed positions, 7-8; slice thickness, 3.375 mm; and matrix, 128×128 .

Data analysis of FDG-PET/CT

In the present study, ^{18}F -FDG-PET/CT findings at each examination were assessed using a consensus reading by two breast radiologists (T.F. with 14 years of experience in breast imaging; M.M. with 10 years of experience in breast imaging). We performed visual analysis of primary lesions and ALNs without defining a cut-off value. Of note, lesions with an ^{18}F -FDG uptake value higher than that of the background tissue were defined as FDG-positive.

Immunohistochemical examination

All specimens were analyzed by pathologists from our institution, and specimens were considered estrogen receptor (ER) positive on immunohistochemistry (IHC) for staining rates higher than 10%. For human epidermal growth factor receptor 2 (HER2) values, and IHC result of 3+ was defined as BC with strong, complete membrane staining observed in at least 10% of tumor cells. For HER2 overexpression of 2+, gene amplification with fluorescence in situ hybridization was performed in this study.

Statistical analysis

Differences in proportions of categorical data were tested using Fisher's exact probability test. Unless otherwise indicated, significant differences among mean values of numerical data were analyzed using Mann-Whitney test. Relationships between the size of SLN metastases and the number of ALNMs were measured using Spearman rank correlation analysis, which can have a magnitude ranging from 0 to 1, with 0 denoting no correlation at all and 1 denoting complete correlation. Predictors of upstaging to pN2a/pN3a were determined by univariate and multivariate logistic regression analyses. Values of $P < 0.05$ were regarded as statistically significant. All statistical analyses were performed using EZR (Saitama Medical Center, Jichi Medical University, Saitama, Japan), a graphical user interfaces for R (The R Foundation for Statistical Computing, Vienna, Austria)[10]. More precisely, EZR is a modified version of R Commander designed to add statistical functions frequently used in biostatistics.

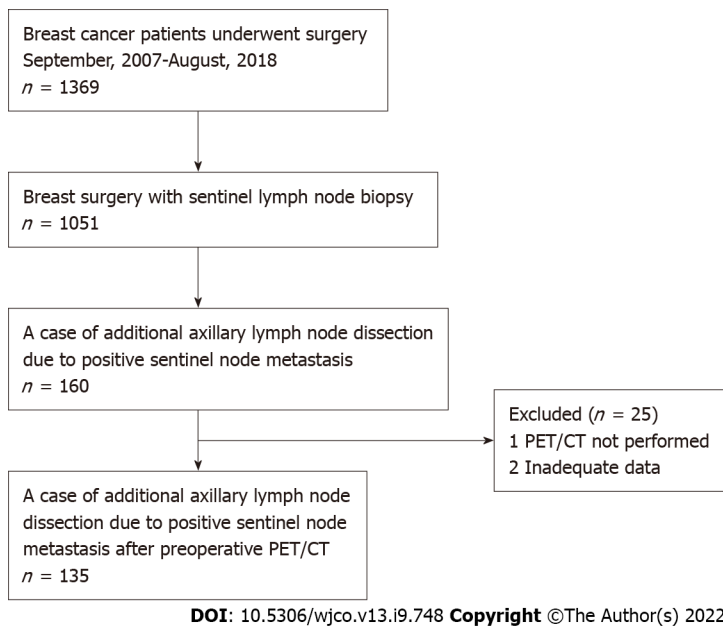


Figure 1 A flowchart of eligible patients. PET/CT: Positron emission tomography/computed tomography.

RESULTS

Demographic and clinical characteristics of study subjects

We retrospectively analyzed 135 BC patients who were SLN-positive and had undergone ALN dissection. FDG-PET/CT was performed in all cases preoperatively. The detailed clinicopathological characteristics of subjects are summarized in Table 1. Among these, 113 patients showed 1-3 ALNMs (pN1) and 22 patients had ≥4 ALNMs (pN2a/pN3a). FDG accumulation in ALNs was found on PET/CT in 19 cases (14.1%). The mean standardized uptake value (SUV) max was 1.48 (range, 0.8-2.0). Preoperative PET/CT showed accumulation in the ALNs, and second-look US was performed in cases where metastasis could not be ruled out. The mean number of excised SLNs was 1.6 (range, 1-5) and the mean number of SLN metastasis was 1.2 (range, 1-3). The median maximal diameter of metastasis in the SLN (SLNDmax) was 3 mm. The correlation between the SLNDmax and the number of ALNMs is shown in Figure 2. A strong correlation was identified between SLNDmax and the number of ALNMs ($P < 0.001$). We measured the cut-off value for the SLNDmax from the receiver operating characteristic (ROC) curve and the cut-off value for upstaging from N0 to pN2a/pN3a was set at 5 mm (area under the curve: 0.873; 95% CI: 0.808-0.931) (Figure 3). Table 2 shows a comparison between pN1 and pN2a/pN3a.

Univariate logistic regression analysis of risk factors associated with upstaging

To search for risk factors for upstaging to pN2a/N3a, univariate and multivariate analyses were performed for associations with clinicopathological factors in two groups of pN1 and pN2a/N3a cases. Invasive diameter at the primary site, number of SLN metastasis, FDG accumulation in ALNs, and SLNDmax were associated with upstaging to pN2a/pN3a, but age, ER status, HER 2 status, tumor grade, and SUVmax at the primary site were not (Table 3).

Multivariate logistic regression analysis of risk factors associated with upstaging

Multivariate logistic regression analysis of clinicopathologic factors was used to examine risk factors for upstaging to pN2a/pN3a. The number of SLN metastasis, SLNDmax, and FDG accumulation in ALNs were associated with upstaging (Table 3).

DISCUSSION

The ACOSOG Z-0011 trial concluded that ALN dissection is not always necessary for women undergoing breast-conserving surgery with 1-2 positive SLNs[1]. However, the overall number of ALNMs represents crucial clinical information. Although avoidance of ALN dissection reduces the degree of surgical invasiveness of a procedure, the number of ALNMs cannot be ascertained. If more than 4 metastatic lymph nodes are present, radiation to the breast or chest wall as well as to the supraclavicular area is necessary[11]. Thus, not knowing the number of ALNMs may lead to over- or under-

Table 1 Background characteristics of all patients

Background characteristics (n = 135)	
Age (yr)	56 (35-84)
SUVmax of primary tumor	3.05 (0.8-11.9)
pN1	113
pN2a or pN3a	22
The invasion diameter of the primary lesion	
≤ 20 mm	67
< 50 mm	55
≥ 50 mm	11
NA	2
Maximal diameter of metastasis in the sentinel lymph nodes (mm)	3 (0.1-25)
The number of SLN metastasis	
1	112
2	19
3	4
ER	
Positive	118
Negative	14
Unknown	3
HER2	
Positive	8
Negative	125
Unknown	2
Nuclear grade of biopsy specimen	
1, 2	103
3	26
Unknown	6
FDG accumulation of axillary lymph nodes	
Yes	19
No	116

SUV: Standardized uptake value; NA: Not applicable; SLN: Sentinel lymph node; ER: Estrogen receptor; HER2: Human epidermal growth factor receptor 2; FDG: Fluorodeoxyglucose.

treatment with radiation therapy postoperatively. The presence or absence of postoperative radiation may also affect the choice of reconstructive technique. Radiation during the insertion of an expander is associated with a greater risk of complications, while radiation after implant placement or to autologous tissue is reported to have fewer complications[2,3]. Pre- and postoperative prediction of the number of ALNMs affects not only the optimal extent of axillary dissection, but also the choice of radiotherapy and, indirectly, reconstruction methods. In the present study, we searched for predictors of upstaging from clinical N0 to pN2a/pN3a using factors identified pre- or intraoperatively, including FDG-PET/CT. This imaging modality is generally considered useful in searching for ALNMs[12]. However, few reports have specified whether preoperative PET/CT was performed when examining factors predicting non-SLN metastasis. As a result of examining various factors for upstaging, we extracted SLNDmax, mild accumulation of FDG in the axilla, and the number of SLN metastasis. The SLNDmax and the number of SLN metastasis have been reported in the past as predictors of metastasis to non-SLNs[13-16]. This is the first study to show that these factors are also important in upstaging from N0 to pN2a/pN3a. Various cut-offs for the SLNDmax have been reported as a predictor of non-SLN

Table 2 Comparison between pN1 and pN2a/pN3a

Total (n = 135)	pN1	pN2a/pN3a	P value
	n = 113	n = 22	
Age	57.96 ± 12.14	59.64 ± 12.73	0.56
The invasion diameter of the primary lesion (mm)	22.77 ± 14.76	39.86 ± 21.73	< 0.001
Maximal diameter of metastasis in the SLNs	3.46 ± 2.80	9.19 ± 5.66	< 0.001
The number of SLN metastasis			0.014
1	98	14	
2 and more	15	8	
ER			0.47
Positive	100	18	
Negative	11	3	
Unknown	2	1	
HER2			1
Positive	7	1	
Negative	104	21	
Unknown	2	0	
Nuclear grade of biopsy specimen			0.77
1, 2	87	16	
3	21	5	
Unknown	4	1	
SUVmax of the primary tumor	3.80 ± 2.50	4.13 ± 2.77	0.61
FDG accumulation of axillary lymph nodes			< 0.001
No	104	11	
Yes	8	11	
Unknown	1	0	

ER: Estrogen receptor; HER2: Human epidermal growth factor receptor 2; SLN: Sentinel lymph node; SUV: Standardized uptake value; FDG: Fluorodeoxyglucose.

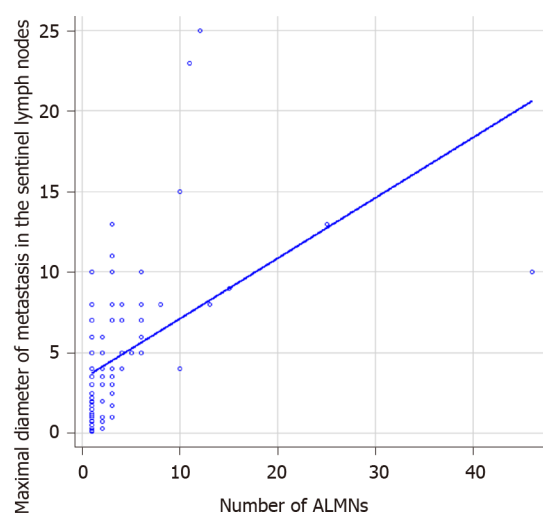
metastasis, and we used ROC curves in our search. As a result, the predictor for upstaging from N0 to pN2a/pN3a was set at 5 mm. If the number of SLN metastasis is large (that is, two or more) or the diameter of metastasis is large (more than 5 mm), or if FDG accumulation in the axilla is mild even if no metastases have been confirmed, irradiation to the chest wall and supraclavicular region may need to be considered even in cases where axillary dissection has been omitted. PET/CT is often performed preoperatively for different cancers. On the other hand, findings from this modality are reportedly less significant for low-stage BC, given the low likelihood of distant metastasis. Some reports have suggested that SUV at the primary site may offer a useful predictor of metastasis to non-SLNs[17]. Ueda *et al*[18] evaluated ALNMs using PET/CT and reported low sensitivity but high specificity. In the present study, we found PET/CT to be useful in predicting multiple ALNMs, but the positive predictive value was not particularly high (57.9%). Many questions remain unanswered, such as the optimal cut-off value for integrated SUV, the influence of the histological type of the primary tumor, and the suitable timing of biopsy.

Further accumulation and analysis of cases are needed. Institutions that aggressively omit axillary dissection should be aware of the dangers of remaining ignorant of the number of ALNMs when multiple risk factors are identified pre- or intraoperatively.

Table 3 Uni- and multivariate logistic regression analysis of risk factors associated with upstaging pN2a/pN3a

Factors	Univariate logistic regression analysis to predictive factors of pN2a/pN3a			Multivariate logistic regression analysis to predictive factors of pN2a/pN3a		
	Odds ratio	95%CI	P value	Odds ratio	95%CI	P value
Age (yr) (< 50 <i>vs</i> ≥ 50)	0.863	0.333-2.24	0.76			
ER (positive <i>vs</i> negative)	0.66	0.167-2.60	0.55			
HER2 (positive <i>vs</i> negative)	0.833	0.954-7.28	0.87			
Invasive diameter of the primary site (≤ 20 mm <i>vs</i> > 20 mm)	4.3	1.48-12.50	0.007	3.53	0.963-13.0	0.057
Nuclear grade (1, 2 <i>vs</i> 3)	1.29	0.426-3.393	0.65			
Total positive SLNs (1 <i>vs</i> 2 and more)	3.73	1.34-10.40	0.012	3.92	1.01-15.3	0.048
Maximal diameter of metastasis in the SLNs (< 5 mm <i>vs</i> ≥ 5 mm)	21.2	4.68-96.3	< 0.001	15.6	3.08-79.2	< 0.001
SUVmax of primary tumor (< 3.1 <i>vs</i> ≥ 3.1)	0.96	0.351-2.62	0.94			
FDG accumulation of axillary lymph nodes (yes <i>vs</i> no)	13	4.32-39.2	< 0.001	4.84	1.29-18.2	0.02

ER: Estrogen receptor; HER2: Human epidermal growth factor receptor 2; SLN: Sentinel lymph node; SUV: Standardized uptake value; FDG: Fluorodeoxyglucose.

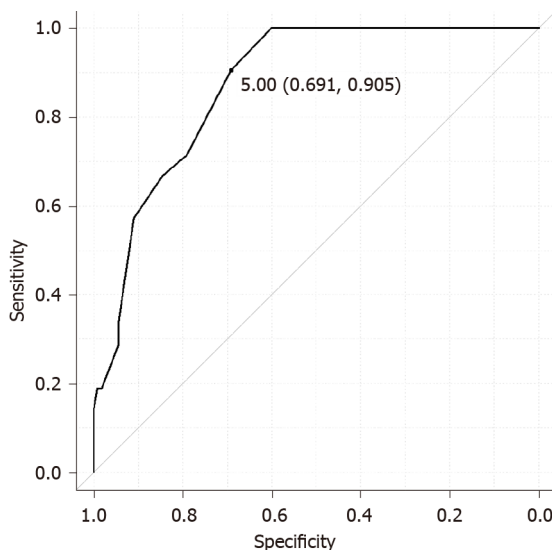


DOI: 10.5306/wjco.v13.i9.748 Copyright ©The Author(s) 2022.

Figure 2 Correlation between the maximal diameter of metastasis in the sentinel lymph nodes and number of axillary lymph node metastases. A strong correlation is evident between maximal diameter of metastasis in the sentinel lymph nodes and the number of axillary lymph node metastases ($P < 0.001$). ALMNs: Axillary lymph node metastases.

CONCLUSION

The present study investigated factors predictive of upstaging from clinical N0 to pN2a/pN3a. Factors such as the number of metastases and SLNDmax, which have previously been reported as predictors of metastasis to non-SLNs, were also useful in predicting upstaging to pN2a/pN3a and emphasized the utility of FDG-PET/CT. The only factor that predicts preoperatively, but not intraoperatively, is the result of FDG-PET/CT.



DOI: 10.5306/wjco.v13.i9.748 Copyright ©The Author(s) 2022.

Figure 3 Cut-off value for the maximal diameter of metastasis in the sentinel lymph node from the receiver operating characteristic curve and cut-off for upstaging from N0 to pN2a/pN3a set to 5 mm (area under the curve: 0.873, 95%CI: 0.808-0.931).

ARTICLE HIGHLIGHTS

Research background

With sentinel node metastasis in breast cancer (BC) patients, axillary lymph node (ALN) dissection is often omitted from cases with breast-conserving surgery. Omission of lymph node dissection reduces the invasiveness of surgery to the patient, but it also obscures the number of metastases to non-sentinel nodes.

Research motivation

The possibility of finding ≥ 4 lymph nodes (pN2a/pN3a) preoperatively is important given the ramifications for postoperative treatment.

Research objectives

The purpose of this study is to search for clinicopathological factors that predict upstaging from N0 to pN2a/pN3a.

Research methods

Patients who were SLN-positive and underwent ALN dissection between September 2007 and August 2018 were selected by retrospective chart review. All patients had BC diagnosed preoperatively as N0 with axillary evaluation by fluorodeoxyglucose (FDG) positron emission tomography/computed tomography and ultrasound (US) examination. When suspicious FDG accumulation was found in ALN, the presence of metastasis was reevaluated by second US. We examined predictors of upstaging from N0 to pN2a/pN3a.

Research results

Among 135 patients, we identified 1-3 ALNs (pN1) in 113 patients and ≥ 4 ALNs (pN2a/pN3a) in 22 patients. Multivariate analysis identified the total number of SLN metastasis, the maximal diameter of metastasis in the SLN (SLNDmax), and FDG accumulation of ALN as predictors of upstaging to pN2a/pN3a.

Research conclusions

We identified factors involved in upstaging from N0 to pN2a/pN3a. The SLNDmax and number of SLN metastasis are predictors of ≥ 4 ALNs (pN2a/pN3a) and predictors of metastasis to non-sentinel nodes, which have been reported in the past. Attention should be given to axillary accumulations of FDG, even when faint.

Research perspectives

It is somewhat possible to predict upstaging to pN2a/pN3a by searching for clinicopathological factors

FOOTNOTES

Author contributions: Oda G contributed to the conceptualization, methodology, software, validation, formal analysis, visualization and writing-original draft preparation; Hanazawa R, Hirakawa A contributed to the statistical checks; Oda G, Nakagawa T, Mori H, Onishi I, Fujioka T, Mori M, and Kubota K contributed to the investigation, resources; Oda G and Mori M contributed to the data curation; Nakagawa T contributed to the writing-review and editing; Okamoto K, Ishikawa T and Uetakeszsz H contributed to the supervision; All authors have read and agreed to the published version of the manuscript.

Institutional review board statement: The study was conducted according to the guidelines of the Declaration of Helsinki, and approved by the Ethics Committee of Tokyo Medical and Dental University, Tokyo, Japan (M2019-137, date of approval: 19 September 2019).

Informed consent statement: All study participants, or their legal guardian, provided informed written consent prior to study enrollment.

Conflict-of-interest statement: The authors declare no conflict of interest.

Data sharing statement: Technical appendix, statistical code, and dataset available from the corresponding author at odasrg2@tmd.ac.jp.

STROBE statement: The authors have read the STROBE Statement checklist of items, and the manuscript was prepared and revised according to the STROBE Statement-checklist of items.

Open-Access: This article is an open-access article that was selected by an in-house editor and fully peer-reviewed by external reviewers. It is distributed in accordance with the Creative Commons Attribution NonCommercial (CC BY-NC 4.0) license, which permits others to distribute, remix, adapt, build upon this work non-commercially, and license their derivative works on different terms, provided the original work is properly cited and the use is non-commercial. See: <https://creativecommons.org/licenses/by-nc/4.0/>

Country/Territory of origin: Japan

ORCID number: Goshi Oda 0000-0002-9431-1330; Tsuyoshi Nakagawa 0000-0003-1967-0445; Hiroki Mori 0000-0003-1967-0445; Ichihiro Onishi 0000-0001-9744-0114; Tomoyuki Fujioka 0000-0002-7141-8901; Mio Mori 0000-0002-6107-4519; Kazunori Kubota 0000-0002-3240-4910; Ryoichi Hanazawa 0000-0002-4230-7356; Akihiro Hirakawa 0000-0003-2580-7460; Toshiaki Ishikawa 0000-0003-0102-8462; Kentaro Okamoto 0000-0002-1021-6417; Hiroyuki Uetake 0000-0001-7162-6842.

S-Editor: Zhang H

L-Editor: A

P-Editor: Zhang H

REFERENCES

- 1 **Giuliano AE**, Ballman KV, McCall L, Beitsch PD, Brennan MB, Kelemen PR, Ollila DW, Hansen NM, Whitworth PW, Blumencranz PW, Leitch AM, Saha S, Hunt KK, Morrow M. Effect of Axillary Dissection vs No Axillary Dissection on 10-Year Overall Survival Among Women With Invasive Breast Cancer and Sentinel Node Metastasis: The ACOSOG Z0011 (Alliance) Randomized Clinical Trial. *JAMA* 2017; **318**: 918-926 [PMID: 28898379 DOI: 10.1001/jama.2017.11470]
- 2 **Reinders FCJ**, Young-Afat DA, Batenburg MCT, Bruckers SE, van Amerongen EA, Macaré van Maurik JFM, Braakenburg A, Zonneville E, Hoefkens M, Teunis T, Verkooijen HM, van den Bongard HJGD, Maarse W. Higher reconstruction failure and less patient-reported satisfaction after post mastectomy radiotherapy with immediate implant-based breast reconstruction compared to immediate autologous breast reconstruction. *Breast Cancer* 2020; **27**: 435-444 [PMID: 31858435 DOI: 10.1007/s12282-019-01036-4]
- 3 **Pu Y**, Mao TC, Zhang YM, Wang SL, Fan DL. The role of postmastectomy radiation therapy in patients with immediate prosthetic breast reconstruction: A meta-analysis. *Medicine (Baltimore)* 2018; **97**: e9548 [PMID: 29419662 DOI: 10.1097/MD.00000000000009548]
- 4 **Magill LJ**, Robertson FP, Jell G, Mosahebi A, Keshtgar M. Determining the outcomes of post-mastectomy radiation therapy delivered to the definitive implant in patients undergoing one- and two-stage implant-based breast reconstruction: A systematic review and meta-analysis. *J Plast Reconstr Aesthet Surg* 2017; **70**: 1329-1335 [PMID: 28743588 DOI: 10.1016/j.bjps.2017.05.057]
- 5 **Manyam BV**, Shah C, Woody NM, Reddy CA, Weller MA, Juloori A, Naik M, Valente S, Grobmyer S, Durand P, Djohan R, Tendulkar RD. Long-Term Outcomes After Autologous or Tissue Expander/Implant-Based Breast Reconstruction and Postmastectomy Radiation for Breast Cancer. *Pract Radiat Oncol* 2019; **9**: e497-e505 [PMID: 31238166 DOI: 10.1016/j.prro.2019.06.008]
- 6 **Naoum GE**, Salama L, Niemierko A, Vieira BL, Belkacemi Y, Colwell AS, Winograd J, Smith B, Ho A, Taghian AG. Single Stage Direct-to-Implant Breast Reconstruction Has Lower Complication Rates Than Tissue Expander and Implant and Comparable Rates to Autologous Reconstruction in Patients Receiving Postmastectomy Radiation. *Int J Radiat Oncol*

- Biol Phys* 2020; **106**: 514-524 [PMID: [31756414](#) DOI: [10.1016/j.ijrobp.2019.11.008](#)]
- 7 **Pal A**, Provenzano E, Duffy SW, Pinder SE, Purushotham AD. A model for predicting non-sentinel lymph node metastatic disease when the sentinel lymph node is positive. *Br J Surg* 2008; **95**: 302-309 [PMID: [17876750](#) DOI: [10.1002/bjs.5943](#)]
 - 8 **Gur AS**, Unal B, Ozbek U, Ozmen V, Aydogan F, Gokgoz S, Gulluoglu BM, Aksaz E, Ozbaz S, Baskan S, Koyuncu A, Soran A; Turkish Federation of Breast Disease Associations Protocol MF08-01 investigators. Validation of breast cancer nomograms for predicting the non-sentinel lymph node metastases after a positive sentinel lymph node biopsy in a multi-center study. *Eur J Surg Oncol* 2010; **36**: 30-35 [PMID: [19535217](#) DOI: [10.1016/j.ejso.2009.05.007](#)]
 - 9 **Kohrt HE**, Olshen RA, Bermas HR, Goodson WH, Wood DJ, Henry S, Rouse RV, Bailey L, Philben VJ, Dirbas FM, Dunn JJ, Johnson DL, Wapnir IL, Carlson RW, Stockdale FE, Hansen NM, Jeffrey SS; Bay Area SLN Study. New models and online calculator for predicting non-sentinel lymph node status in sentinel lymph node positive breast cancer patients. *BMC Cancer* 2008; **8**: 66 [PMID: [18315887](#) DOI: [10.1186/1471-2407-8-66](#)]
 - 10 **Kanda Y**. Investigation of the freely available easy-to-use software 'EZR' for medical statistics. *Bone Marrow Transplant* 2013; **48**: 452-458 [PMID: [23208313](#) DOI: [10.1038/bmt.2012.244](#)]
 - 11 **Curigliano G**, Burstein HJ, Winer EP, Gnant M, Dubsy P, Loibl S, Colleoni M, Regan MM, Piccart-Gebhart M, Senn HJ, Thürlimann B; St. Gallen International Expert Consensus on the Primary Therapy of Early Breast Cancer 2017, André F, Baselga J, Bergh J, Bonnefoi H, Brucker SY, Cardoso F, Carey L, Ciruelos E, Cuzick J, Denkert C, Di Leo A, Ejlersen B, Francis P, Galimberti V, Garber J, Gulluoglu B, Goodwin P, Harbeck N, Hayes DF, Huang CS, Huober J, Hussein K, Jassem J, Jiang Z, Karlsson P, Morrow M, Orecchia R, Osborne KC, Pagani O, Partridge AH, Pritchard K, Ro J, Rutgers EJT, Sedlmayer F, Semiglazov V, Shao Z, Smith I, Toi M, Tutt A, Viale G, Watanabe T, Whelan TJ, Xu B. De-escalating and escalating treatments for early-stage breast cancer: the St. Gallen International Expert Consensus Conference on the Primary Therapy of Early Breast Cancer 2017. *Ann Oncol* 2017; **28**: 1700-1712 [PMID: [28838210](#) DOI: [10.1093/annonc/mdx308](#)]
 - 12 **Ulaner GA**. PET/CT for Patients With Breast Cancer: Where Is the Clinical Impact? *AJR Am J Roentgenol* 2019; **213**: 254-265 [PMID: [31063423](#) DOI: [10.2214/AJR.19.21177](#)]
 - 13 **Joseph KA**, El-Tamer M, Komenaka I, Troxel A, Ditkoff BA, Schnabel F. Predictors of nonsentinel node metastasis in patients with breast cancer after sentinel node metastasis. *Arch Surg* 2004; **139**: 648-651 [PMID: [15197092](#) DOI: [10.1001/archsurg.139.6.648](#)]
 - 14 **Degnim AC**, Griffith KA, Sabel MS, Hayes DF, Cimmino VM, Diehl KM, Lucas PC, Snyder ML, Chang AE, Newman LA. Clinicopathologic features of metastasis in nonsentinel lymph nodes of breast carcinoma patients. *Cancer* 2003; **98**: 2307-2315 [PMID: [14635063](#) DOI: [10.1002/cncr.11803](#)]
 - 15 **Wong SL**, Edwards MJ, Chao C, Tuttle TM, Noyes RD, Woo C, Cerrito PB, McMasters KM; University of Louisville Breast Cancer Sentinel Lymph Node Study Group. Predicting the status of the nonsentinel axillary nodes: a multicenter study. *Arch Surg* 2001; **136**: 563-568 [PMID: [11343548](#) DOI: [10.1001/archsurg.136.5.563](#)]
 - 16 **Boler DE**, Uras C, Ince U, Cabioglu N. Factors predicting the non-sentinel lymph node involvement in breast cancer patients with sentinel lymph node metastases. *Breast* 2012; **21**: 518-523 [PMID: [22410110](#) DOI: [10.1016/j.breast.2012.02.012](#)]
 - 17 **Yamagishi Y**, Yamasaki T, Ishida J, Moriya T, Einama T, Koiwai T, Fukumura-Koga M, Kono T, Hayashi K, Ueno H, Yamamoto J, Tsuda H. Utility of ¹⁸F-Fluorodeoxyglucose Positron Emission Tomography/Computed Tomography Fusion Imaging for Prediction of Metastasis to Sentinel and Nonsentinel Nodes in Patients with Clinically Node-Negative Breast Cancer. *Ann Surg Oncol* 2020; **27**: 2698-2710 [PMID: [32124121](#) DOI: [10.1245/s10434-020-08269-0](#)]
 - 18 **Ueda S**, Tsuda H, Asakawa H, Omata J, Fukatsu K, Kondo N, Kondo T, Hama Y, Tamura K, Ishida J, Abe Y, Mochizuki H. Utility of ¹⁸F-fluoro-deoxyglucose emission tomography/computed tomography fusion imaging (¹⁸F-FDG PET/CT) in combination with ultrasonography for axillary staging in primary breast cancer. *BMC Cancer* 2008; **8**: 165 [PMID: [18541009](#) DOI: [10.1186/1471-2407-8-165](#)]



Published by **Baishideng Publishing Group Inc**
7041 Koll Center Parkway, Suite 160, Pleasanton, CA 94566, USA

Telephone: +1-925-3991568

E-mail: bpgoffice@wjgnet.com

Help Desk: <https://www.f6publishing.com/helpdesk>

<https://www.wjgnet.com>

