

Neuronal Excitability

Hyperpolarization-Activated Currents and Subthreshold Resonance in Granule Cells of the Olfactory Bulb

Ruilong Hu,¹ Katie A. Ferguson,²  Christina B. Whiteus,² Dimphna H. Meijer,² and  Ricardo C. Araneda¹DOI:<http://dx.doi.org/10.1523/ENEURO.0197-16.2016>¹Department of Biology, University of Maryland, College Park, Maryland 20742, and ²Neurobiology Course, Marine Biology Laboratory, Woods Hole, Massachusetts 02543

Abstract

An important contribution to neural circuit oscillatory dynamics is the ongoing activation and inactivation of hyperpolarization-activated currents (I_h). Network synchrony dynamics play an important role in the initial processing of odor signals by the main olfactory bulb (MOB) and accessory olfactory bulb (AOB). In the mouse olfactory bulb, we show that I_h is present in granule cells (GCs), the most prominent inhibitory neuron in the olfactory bulb, and that I_h underlies subthreshold resonance in GCs. In accord with the properties of I_h , the currents exhibited sensitivity to changes in extracellular K^+ concentration and ZD7288 (4-ethylphenylamino-1,2-dimethyl-6-methylaminopyrimidin chloride), a blocker of I_h . ZD7288 also caused GCs to hyperpolarize and increase their input resistance, suggesting that I_h is active at rest in GCs. The inclusion of cAMP in the intracellular solution shifted the activation of I_h to less negative potentials in the MOB, but not in the AOB, suggesting that channels with different subunit composition mediate I_h in these regions. Furthermore, we show that mature GCs exhibit I_h -dependent subthreshold resonance in the theta frequency range (4–12 Hz). Another inhibitory subtype in the MOB, the periglomerular cells, exhibited I_h -dependent subthreshold resonance in the delta range (1–4 Hz), while principal neurons, the mitral cells, do not exhibit I_h -dependent subthreshold resonance. Importantly, I_h size, as well as the strength and frequency of resonance in GCs, exhibited a postnatal developmental progression, suggesting that this development of I_h in GCs may differentially contribute to their integration of sensory input and contribution to oscillatory circuit dynamics.

Key words: granule cell; HCN; neurogenesis; olfactory bulb; resonance

Significance Statement

The hyperpolarization-activated current (I_h) plays an essential role in neuronal function and network oscillatory dynamics throughout the nervous system. Network synchrony dynamics are an important component of the initial processing of odor signals in the olfactory bulb (OB). Here we provide new evidence that granule cells (GCs), the major inhibitory subtype in the OB, exhibit an I_h -dependent subthreshold resonance in the theta frequency range (4–12 Hz). Notably, I_h size and the strength of subthreshold resonance in GCs exhibited a postnatal developmental progression, suggesting that this development of I_h in GCs may differentially contribute to their integration of sensory input and contribution to oscillatory circuit dynamics.

Introduction

Hyperpolarization-activated cyclic nucleotide-gated (HCN) channels play an essential role in neuronal function and network oscillatory dynamics, including the control of

membrane excitability and integration of synaptic inputs, the generation of membrane potential oscillations, and subthreshold resonance of neurons (McCormick and Pape, 1990; Magee, 1998; Fan et al., 2005; George et al.,

Received July 9, 2016; accepted October 24, 2016; First published October 27, 2016.

The authors declare no competing financial interests.

Author contributions: R.H. and R.C.A. designed research; R.H., K.A.F., C.B.W. and D.H.M. performed research, R.H. analyzed data; R.H. and R.C.A. wrote the paper.

2009; Hu et al., 2009). Moreover, the voltage sensitivity and kinetic properties of the hyperpolarization-activated current (I_h), is dependent on the subunit composition of the channels (HCN1–HCN4), which confers differing sensitivities to cyclic nucleotides, providing a rich heterogeneity to the contribution of these channels to network function (Kaupp and Seifert, 2001; Wainger et al., 2001). Thus, changes in intracellular cAMP concentration in response to neuronal metabolic state or to the action of neuromodulators can affect the I_h and, in turn, alter membrane potential oscillations of pacemaker cells in the brain and in the heart (Pape and McCormick, 1989; Valsecchi et al., 2013).

In olfaction, initial processing of odor signals occurs through two parallel, albeit complementary, pathways in the olfactory bulb (OB). In general, the main OB (MOB) receives input from the nasal epithelium and is largely tuned to environmental odors, whereas the accessory OB (AOB) receives input from the vomeronasal organ (VNO) and is largely responsible for the detection of semiochemicals (Shepherd, 1972; Keverne, 1999; Lledo et al., 2005). In the MOB, network synchrony is a substrate to important aspects of olfactory coding, such as sparsening and feature binding of odor representations (Brody and Hopfield, 2003; Binns and Brennan, 2005; Osinski and Kay, 2016), and network synchrony may also play a role in pheromonal processing by the AOB (Binns and Brennan, 2005; Leszkowicz et al., 2012). This network synchrony arises from the activity of dendrodendritic synapses between a large number of intrinsic inhibitory neurons, including the granule cells (GCs) and periglomerular cells (PGCs), and the output neurons, the mitral cells (MCs) and tufted cells (Lagier et al., 2004; Lepousez and Lledo, 2013; Kay, 2014; Gschwend et al., 2015). In the MOB, network oscillations in the theta frequency (4–12 Hz), entrained by the respiratory cycle, are in part mediated by PGCs (Fukunaga et al., 2014), while gamma oscillations (40–80 Hz) are mediated by GCs (Lagier et al., 2004; Fukunaga et al., 2014; Kay, 2014).

Surprisingly, despite the influence of inhibitory neurons in promoting network oscillations in the OB, the presence and contribution of I_h to GC excitability has not been addressed. Here, using whole-cell patch-clamp recordings, we show that most GCs of the OB exhibit I_h . Targeted recording of postnatally labeled neurons indicated that the contribution of I_h to GC physiology increases throughout postnatal development, leveling between 4 and 6 weeks after birth. In the

presence of ZD7288 (4-ethylphenylamino-1,2-dimethyl-6-methylaminopyrimidin chloride), an I_h blocker, GCs hyperpolarized and their input resistance increased, suggesting that, at rest, I_h contributes to the excitability and passive properties of GCs. Importantly, mature MOB GCs and PGCs exhibited an I_h -dependent subthreshold resonance with resonant frequencies in the delta and theta ranges (1–12 Hz). These results suggest that the expression of I_h and subthreshold resonance in inhibitory neurons may impart unique features to odor processing in the OB, and facilitate oscillatory network activity in both the main olfactory and vomeronasal systems.

Materials and Methods

Animals

All experiments were conducted following the guidelines of the institutional animal care and use committee of the University of Maryland and the Marine Biology Laboratory. Experiments were performed on wild-type (C57BL/6) mice of either sex, ranging in age from postnatal day 15 (P15) to 60 (P60).

Electroporation

To label postnatally born neurons with the green fluorescent protein (GFP), mice (P1–P4) were anesthetized by hypothermia and 2 μ l (4 μ g/ μ l) of pCAG-GFP plasmid (Addgene) was injected into the lateral ventricle. Immediately after the injection, twizzer-type electrodes (BTX) were placed on the sides of the head for electroporation (5 \times 100 V pulses of 50 ms) using an ECM 830 Electro Square Electroporation System (BTX). Recordings of GCs were conducted at least 1 week postelectroporation, and onward, in cells identified by the expression of GFP under a fluorescent microscope.

Slice preparation

Experiments were performed in OB slices using methods previously described (Smith et al., 2015). Briefly, brain slices were prepared in an oxygenated ice-cold artificial CSF (ACSF) containing low Ca^{2+} (0.5 mM) and high Mg^{2+} (6 mM). Sagittal sections of the OB (250 μ m) were then transferred to an incubation chamber containing normal ACSF (see below) and were left to recuperate for at least 30 min at 35°C until the recordings. In all experiments, unless otherwise stated, the extracellular solution is ACSF of the following composition (in mM): 125 NaCl, 26 NaHCO₃, 1.25 NaH₂PO₄, 2.5 KCl, 2 CaCl₂, 1 MgCl₂, 1 myo-inositol, 0.4 ascorbic acid, 2 Na-pyruvate, and 15 glucose, continuously oxygenated (95% O₂-5% CO₂), which produced a pH of 7.4 and an osmolarity of 305 mOsm.

Electrophysiological recordings

Neurons were visualized using an Olympus BX51W1 microscope and were recorded using a dual EPC10 amplifier (HEKA) in voltage-clamp and current-clamp modes. In a subset of the experiments, to visualize and confirm the identity and morphology of GCs, the fluorophore Alexa Fluor 594 (red) was included in the recording pipette solution (20 μ M). Electrical stimulations and recordings were performed using the PatchMaster software. Experiments were performed at room temperature, or at 32 \pm

This research was supported by National Institutes of Health (NIH)-National Institute on Deafness and Other Communication Disorders Grant DCR01-DC-009817 and NIH-National Institute on Aging Grant AG-049937A (to R.C.A.) and National Science Foundation-Graduate Research Fellowships Program/Division of Graduate Education Grant 1322106 (to R.H).

Acknowledgments: We thank the members of the Araneda laboratory for their helpful comments.

Correspondence should be addressed to Dr. Ricardo C. Araneda, Department of Biology, Bioscience Research Building R-1239, University of Maryland, College Park, MD 20742. E-mail: raraneda@umd.edu.

DOI: <http://dx.doi.org/10.1523/ENEURO.0197-16.2016>

Copyright © 2016 Hu et al.

This is an open-access article distributed under the terms of the Creative Commons Attribution 4.0 International, which permits unrestricted use, distribution and reproduction in any medium provided that the original work is properly attributed.

2°C, using the TC-342B Automatic Temperature Controller (Warner Instruments) with a perfusion speed of 2–3 ml/min. Cells were patched using standard patch pipettes (resistance, 4–8 MΩ). The membrane potential was not corrected for junction potential. Although our experiments in whole-cell recordings precluded an accurate measurement of membrane potential (V_m), right after rupturing the seal, the V_m in GCs of the MOB was -71.9 ± 1.5 mV ($n = 26$) and -64.4 ± 1.5 mV ($n = 5$) in the AOB. These measurements are in agreement with those from previous studies indicating that GCs maintain a hyperpolarized V_m in the slice preparation (Cang and Isaacson, 2003; Egger et al., 2005). Therefore, unless otherwise indicated, voltage-clamp and current-clamp experiments in GCs were conducted at -60 or -70 mV.

Solutions and pharmacological agents

In whole-cell recordings, the internal solution had the following composition (in mM): 120 K-gluconate, 10 Na-Gluconate, 4 NaCl, 10 HEPES-K, 10 Na phosphocreatine, 2 Na-ATP, 4 Mg-ATP, and 0.3 GTP adjusted to pH 7.3 with KOH. This internal solution, which contains Na, was used in order to compare the physiology of GCs with previous work published from our laboratory (Smith et al., 2015). In some experiments, 0.5 mM cAMP was added to the internal solution. The osmolarity of the internal solutions was adjusted to 290–305 mOsm. For experiments using high extracellular K^+ , the ACSF contained 25 mM KCl and 102.5 mM NaCl. Drugs were prepared fresh from stocks and diluted into the external solution; ZD7288 was purchased from Tocris Cookson, and it was applied at 30 μ M.

Data analysis

All electrophysiological recordings were analyzed in MATLAB (MathWorks). In order to isolate I_h , leak currents were subtracted from the voltage–current relationships using multiples of a small voltage step (-60 to -65 mV) elicited at the end of each voltage-clamp trace. Recorded GCs exhibited heterogeneity in physiological properties, such as input resistance and capacitance, presumably due to the presence of a heterogeneous population that included mature and immature cells. To compensate for these differences, in some instances (i.e., high K^+ or ZD288) I_h was normalized to the current elicited by a voltage step from -60 to -130 mV.

Voltage dependency was calculated by fitting the tail-current maximum values to a Boltzmann function of the following form (Ludwig et al., 1998; Dibattista et al., 2008):

$$I = I_{\max} / \{1 + \exp[(V - V_{\text{half}}) / k_s]\},$$

where I_{\max} is the maximal current, V is the prepulse potential, V_{half} is the half-activation potential of the current, and k_s is the slope factor. The current (I) values were measured as the peak current obtained with a step to -130 mV from the prepulse potential (see Fig. 2A, inset) and were then normalized to the fitted I_{\max} value for each cell. The activation time constant (τ) for I_h was determined by fitting a single exponential function to the raw voltage trace when stepping from -60 to -130 mV.

The sag potential was calculated from the voltage deflection elicited by a negative current pulse, and corresponds to the difference between the peak minimum voltage and the V_m upon reaching a steady state (after 1 s). The change in membrane potential (ΔV_m) in response to ZD7288 was measured as the difference between the baseline V_m value (before the administration of the drug) and the V_m value at the peak of the response, which, under our perfusion speed, occurred within ~ 6 – 10 min. Subthreshold resonance was measured using a standard impedance amplitude protocol (ZAP), in which a stimulus of sinusoidal current of constant amplitude and exponentially increasing frequency (0.2–20 Hz) is injected into the cell. The ZAP protocol was obtained at different negative potentials (-60 to -90 mV), which are correspondingly indicated throughout the text. The exponential ZAP protocol we used works best on cells with lower resonant frequencies; therefore, we also confirmed our findings in mature cells using a linear ZAP protocol (Hu et al., 2002; Narayanan and Johnston, 2007), allowing us to better sample higher frequencies (data not shown). The impedance profile was calculated as the magnitude of the ratio of the fast Fourier transforms of the voltage response and current input (Gutfreund et al., 1995; Hutcheon and Yarom, 2000; Vera et al., 2014) as follows:

$$Z(f) = \text{IFFT}[V(t)] / \text{FFT}[I(t)].$$

The impedance profile is smoothed, and the resonant frequency (f_{res}) is the frequency at which the maximal impedance value occurs. If the peak value is not clear, the impedance profile is fit with a quadratic function to provide an estimate. The strength of resonance (Q factor) is calculated as the ratio between the maximal impedance ($|Z(f_{\text{res}})|$) and the lowest frequency impedance values ($|Z(f_{\text{low}})|$; 0.5 Hz). The cell is considered resonant if $f_{\text{res}} > f_{\text{low}}$ and $Q > 1$. Statistical significance was determined by a Student's t test, Mann–Whitney U test, one-way ANOVA, logistic regression, or linear regression.

Results

I_h is present in GCs of the AOB and MOB

We conducted whole-cell patch-clamp recordings in GCs of the MOB and AOB. In both regions, GCs are located in easily identified layers and exhibit characteristic morphology, including the presence of basal dendrites and a single apical dendrite, which bifurcates into several branches, populated by prominent dendritic spines (Fig. 1A; Price and Powell, 1970; Larriva-Sahd, 2008). In voltage clamp (Fig. 1B), hyperpolarizing steps from -60 to -130 mV revealed a slowly developing inward current, with characteristics of I_h , that occurred in the majority of GCs [$\sim 96\%$ in the AOB (80 of 83 GCs) and $\sim 90\%$ in the MOB (106 of 118 GCs)]. In agreement with the properties of I_h , the peak amplitude of the inward current was enhanced by approximately threefold by increasing the external K^+ concentration from 2.5 to 25 mM (Fig. 1C). Thus, the normalized mean currents in high K^+ were 3.7 ± 0.9 ($n = 5$; Mann–Whitney U test, $p < 0.01$) in the AOB and 3.5 ± 1.1 in the MOB ($n = 4$; Mann–Whitney U test, $p < 0.01$).

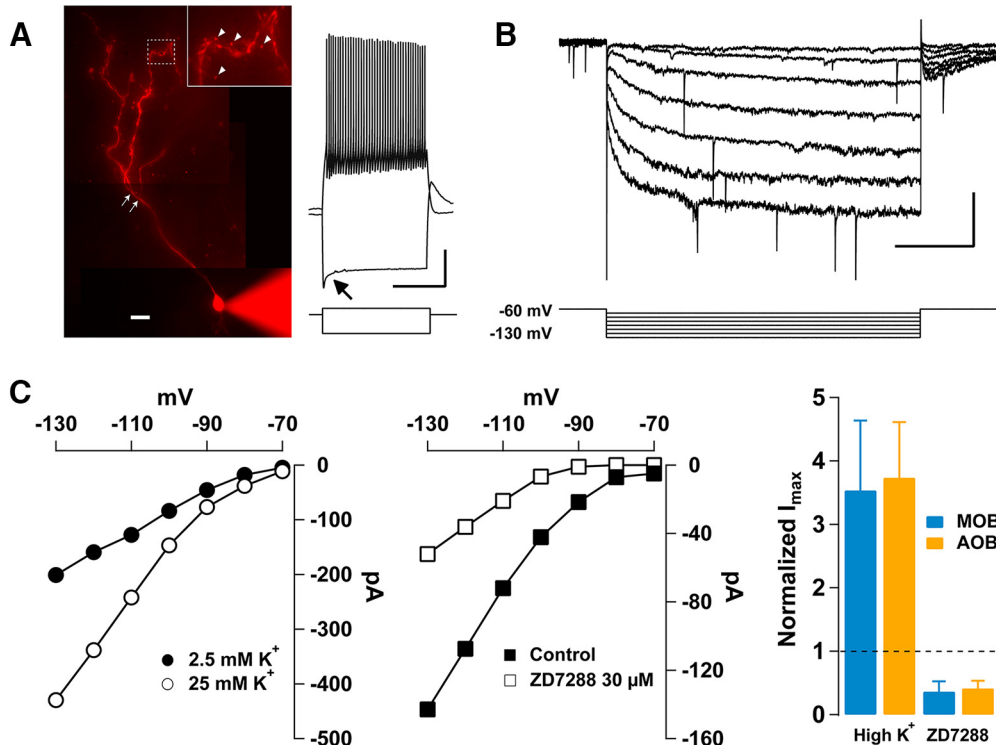


Figure 1. Properties of hyperpolarization-activated cation currents in GCs of the OB. **A**, Left, Image of a GC recorded in the AOB, with Alexa Fluor 594 in the pipette. Mature GCs are characterized by the presence of branches in the apical dendrite (white arrows), and prominent dendritic spines (inset, arrow heads). Scale bar, 20 μ m. Right, Current-clamp response of the GC shown on the left. A hyperpolarizing current step (-60 pA) produces a sag in the V_m (arrow), while a depolarizing current step (20 pA) elicits a train of action potentials. The resting V_m in this cell is -60 mV. Calibration: 20 mV and 1 s. **B**, Hyperpolarizing voltage steps from -60 to -130 mV (10 mV steps) elicited a slowly developing hyperpolarization-activated inward current. Calibration: 500 ms and 50 pA. **C**, Left, Current-voltage (I - V) relationship for I_h in an AOB GC. Raising the external K^+ concentration from 2.5 mM (filled circles) to 25 mM (empty circles) increased the inward current at each potential. Middle, I - V relationship of an AOB GC in control (filled squares) and in the presence of the I_h blocker ZD7288 (30 μ M, empty squares); at all potentials ZD7288 reduced I_h . Right, Summary plot showing the effect of high K^+ and ZD7288 on the normalized mean I_h at -130 mV. In the MOB (blue) and AOB (orange), high K^+ produced at least a threefold increase in the current. Similarly, ZD7288 produced a $>60\%$ decrease in I_h in both regions.

Importantly, in the presence of the selective I_h blocker ZD7288 (30 μ M; see Materials and Methods), the inward current was reduced by over 60% (Fig. 1C). The normalized mean current in the presence of ZD7288 was 0.4 ± 0.1 in the AOB ($n = 4$; Mann-Whitney U test, $p < 0.03$) and 0.36 ± 0.16 in the MOB ($n = 7$; Mann-Whitney U test, $p < 0.001$).

Different subunit composition in the tetrameric HCN channels confers distinct cyclic nucleotide sensitivity to I_h , which in turn influences the voltage sensitivity and kinetics of the channels (Craven and Zagotta, 2006; Benaroch, 2013). Therefore, we compared the properties of I_h by recording GCs with and without cAMP (0.5 mM) in the internal solution, determining the kinetics of I_h activation and maximal current elicited in voltage clamp (Fig. 2A). Analysis of the voltage dependency using a Boltzmann fit (see Materials and Methods) and the kinetics of activation of I_h revealed significant differences between GCs in the AOB and MOB. In the absence of cAMP, the activation of I_h occurred at more positive potentials in the AOB than in the MOB; the V_{half} of the activation of I_h in AOB was -94.8 ± 4 mV ($n = 15$), while in the MOB V_{half} was -103 ± 6 mV ($n = 10$; AOB vs MOB, Student's t test, $p < 0.03$). Furthermore, in the absence of cAMP, the activation of I_h

was slower in the AOB than in the MOB (Fig. 2B; $\tau = 123 \pm 14$ ms vs $\tau = 58.8 \pm 12.9$ ms, respectively; Student's t test, $p < 0.007$). Interestingly, adding cAMP to the internal solution shifted V_{half} by ~ 10 mV in the MOB (-94 ± 5 mV, $n = 11$, Student's t test, $p < 0.04$), while it produced no significant effect in the AOB (-94.5 ± 3 mV, $n = 12$; Student's t test, $p > 0.4$). In contrast, τ decreased by approximately half in both regions (AOB: 55.3 ± 8.7 ms; Student's t test, $p < 0.001$; MOB: 30 ± 6.8 ms; Student's t test, $p < 0.03$). Together, these findings indicate that the sensitivity to cAMP is region specific and suggest that GCs may express HCN channels with different subunit composition in these regions.

The voltage dependency of I_h in GCs suggests that it could be active at resting V_m (see Materials and Methods). In agreement with this possibility, in current-clamp experiments bath perfusion of ZD7288 invariably produced a hyperpolarization in GCs (Fig. 3). Blocking I_h reduced the membrane potential by 6 ± 1.3 mV in the AOB (orange, $n = 6$; Student's t test, $p < 0.005$) and by 8.8 ± 3.7 mV in the MOB (blue, $n = 5$; Student's t test, $p < 0.04$). This effect of ZD7288 was still present in the presence of

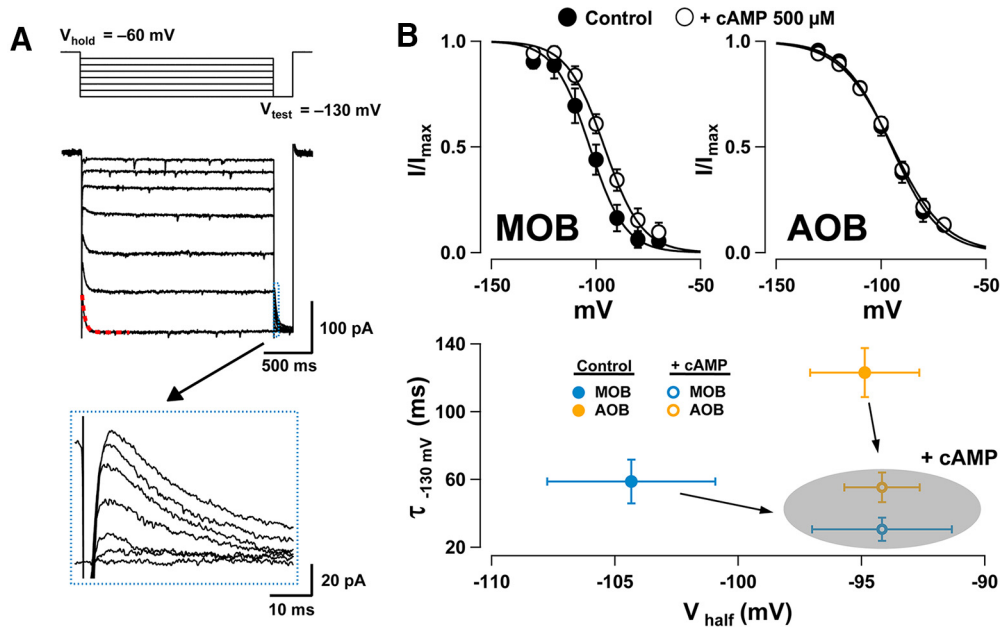


Figure 2. Voltage dependency of I_h and sensitivity to intracellular cAMP. **A**, Voltage-clamp responses in an MOB GC with added cAMP in the internal solution showing I_h elicited by 10 mV hyperpolarizing steps from -60 to -130 mV. At the end of each step, a test pulse to -130 mV (V_{test}) was elicited to measure the maximal current at each potential (traces shown in the bottom box inset). The current amplitudes measured at the peak were normalized to I_{max} and fitted to a Boltzmann function (see Materials and Methods). The τ value was estimated by fitting the current elicited by stepping from -60 to -130 mV (red dotted line, 25.5 ms for this trace). **B**, Top, Boltzmann fits for I_h in GCs of the MOB (left) and AOB (right) in recordings conducted with internal solutions without cAMP (filled circles) or containing cAMP (0.5 mM, empty circles). Bottom, Summary plot comparing the cAMP sensitivity of V_{half} and τ in AOB GCs (orange) and MOB GCs (blue). In the presence of cAMP, the V_{half} was shifted to more positive potentials in MOB GCs, while in the AOB, τ was reduced (shaded oval).

blockers of fast synaptic transmission (APV, $100 \mu\text{M}$; CNQX, $10 \mu\text{M}$; and gabazine, $10 \mu\text{M}$), suggesting a direct effect on GCs. Application of ZD7288 reduced the membrane potential by 3.7 ± 1 mV in AOB GCs ($n = 4$; Student's t test, $p < 0.007$) and 6.9 ± 3.3 mV in MOB GCs

($n = 4$; Student's t test, $p < 0.05$). In addition, ZD7288 produced a significant increase in GCs input resistance (R_i) in both regions (Fig. 3; AOB; 1.04 ± 0.20 vs 1.27 ± 0.19 G Ω ; Student's t test, $p < 0.01$; MOB 1.24 ± 0.25 vs 2.06 ± 0.28 G Ω ; Student's t test, $p < 0.05$).

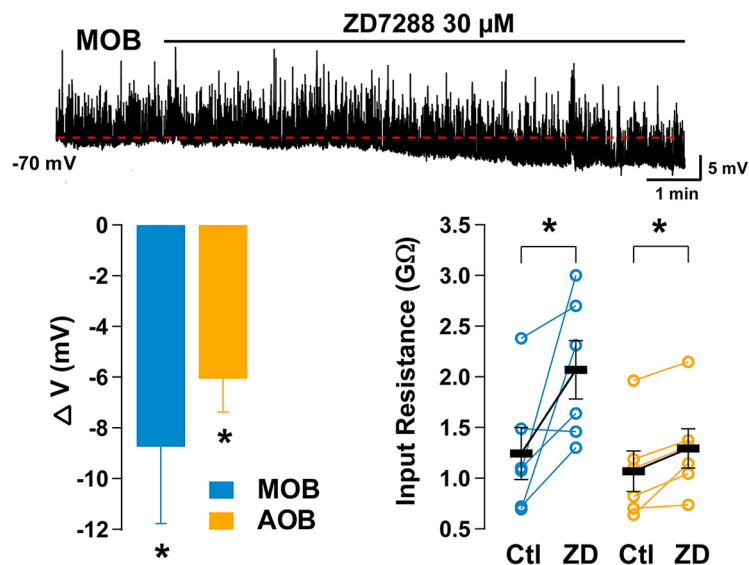


Figure 3. I_h contributes to the intrinsic properties of GCs. Top trace, Current-clamp responses in an MOB GC. Bath perfusion of ZD7288 produces a hyperpolarization (red dotted line). Spontaneous postsynaptic potentials appear as upward spikes. Bottom left, Summary of the effects of ZD7288 on V_m . Application of ZD7288 reduces the membrane potential of GCs of the MOB and AOB. Right, Pharmacological block of I_h significantly increases the input resistance of GCs measured from a holding potential of -60 mV with a negative current step.

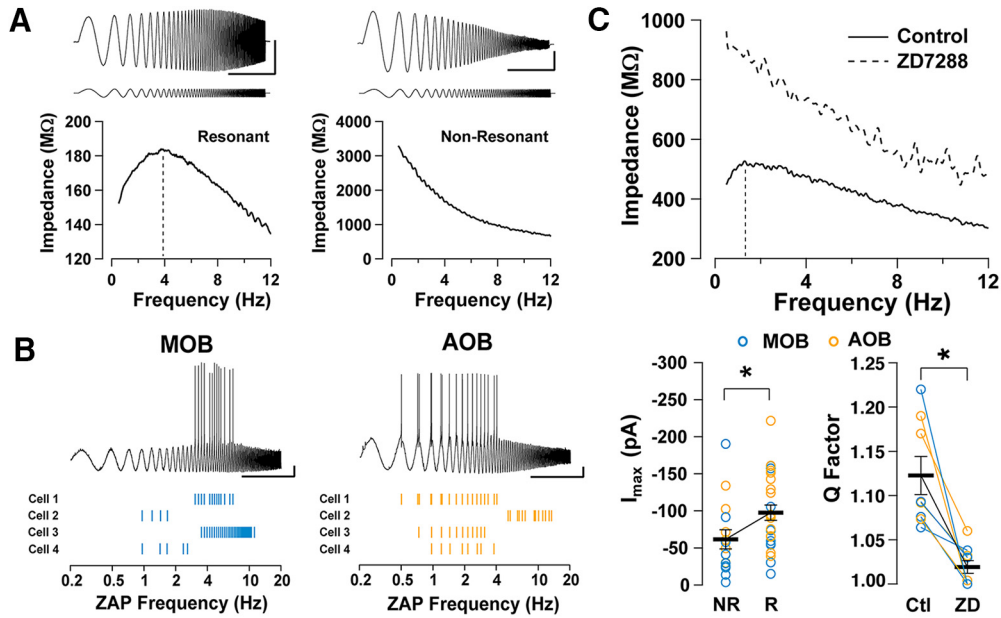


Figure 4. Contribution of I_h to subthreshold resonance in GCs. **A**, Top, Voltage responses (top traces) to a ZAP current stimulus (bottom traces) in MOB GCs in a resonant (left) and a nonresonant (right) cell. Bottom, Impedance profiles for the cells shown above. In the resonant cell (left), the Q value is 1.20 and the f_{res} value is 3.88 Hz; whereas, for the nonresonant cell (right), $f_{res} = f_{low}$ and the $Q = 1$. Calibration: 5 s and 10 mV [with a 50 pA (left) and 5 pA (right) ZAP stimulus amplitude]. The V_m for both cells is -80 mV. **B**, ZAP stimulus applied to resonant GCs in the MOB (top) and AOB (bottom); the current amplitude was adjusted to elicit action potentials, which occurred around the resonant frequency of the cell. **C**, Top, The impedance profile of an AOB GC that exhibits subthreshold resonance in control conditions and, in the presence of ZD7288. In control conditions, $Q = 1.21$ and $f_{res} = 1.3$ Hz (black line). In the presence of ZD7288, the resistance of the GC increases, the resonance is abolished, and the impedance profile resembles that of a nonresonant cell ($Q = 1$). Bottom left, Summary plot showing the distribution of values for maximal I_h (measured at -130 mV) for MOB (blue, $n = 19$) and AOB (orange, $n = 21$) GCs; resonant cells have larger I_h values. Bottom right, The Q factor significantly decreases after perfusion of ZD7288 in the AOB ($n = 4$) and MOB ($n = 4$).

GCs exhibit subthreshold resonance that depends on I_h

In other brain regions, I_h plays a critical role in generating subthreshold resonance of neurons, which in turn contributes to network oscillatory properties (Hu et al., 2002; Narayanan and Johnston, 2007; van Brederode and Berger, 2011; Vera et al., 2014). Therefore, we examined subthreshold resonance in GCs that exhibited I_h , using a sinusoidal current stimulus of increasing frequency (ZAP stimulus; see Materials and Methods) in animals older than P30. Surprisingly, we observed a significant heterogeneity in responses to the ZAP stimulus among GCs, with a mixed population of resonant and nonresonant cells (Fig. 4A). The percentage of resonant cells in the AOB was $\sim 71\%$ (15 of 21 cells), and in the MOB was $\sim 52\%$ (10 of 19 cells). In addition, among all resonant cells (AOB plus MOB), the response to the ZAP stimulus revealed heterogeneity in the f_{res} , with cells distributed along the delta and theta range (data not shown). Importantly, this subthreshold resonance could affect the global excitability of GCs. Accordingly, when we adjusted the ZAP protocol to elicit action potentials in a subset of resonant MOB and AOB GCs, these action potentials occurred at a frequency within the range of f_{res} for each cell, with 79% of the action potentials falling within ± 3 Hz relative to the resonant frequency of the cell (Fig. 4B).

The heterogeneity of subthreshold resonance that we observed prompted us to examine whether the size of I_h in

GCs could contribute to these differences. Across the total population of GCs studied (AOB and MOB), resonant cells had larger I_h values than nonresonant cells, suggesting that I_h amplitude is a predictor of resonance (Fig. 4C; resonant cells, $I_{max} = -97.5 \pm 10.3$ pA, $n = 25$; nonresonant cells, $I_{max} = -61 \pm 13.0$ pA, $n = 15$; logistic regression, $p < 0.02$). Similarly, I_h amplitude is predictive of resonance strength (I_{max} vs Q , in a linear regression model, $p < 0.02$). In agreement with a larger I_h value, R_i was significantly lower in resonant cells than in nonresonant cells (1.14 ± 0.01 vs 1.61 ± 0.17 G Ω ; logistic regression, $p < 0.01$). Notably, the subthreshold resonance was abolished in the presence of ZD7288, (Fig. 4C); the strength of resonance or Q factor (see Materials and Methods) was reduced from 1.12 ± 0.02 to 1.02 ± 0.01 in the presence of ZD7288 ($n = 8$; Student's t test, $p < 0.0005$). Together, these results suggest that I_h is a major contributor to the expression of subthreshold resonance in AOB and MOB GCs.

To further characterize the subthreshold resonance in AOB and MOB GCs, we performed targeted recordings of postnatally labeled neurons (see Materials and Methods). After 4 weeks, GCs are fully integrated, and exhibit characteristic physiological and morphological properties (Petreanu and Alvarez-Buylla, 2002; Winner et al., 2002; Carleton et al., 2003; Lledo et al., 2006). At this age (Fig. 5A), the analysis of voltage dependency indicated that f_{res} in the AOB did not vary with voltage (-70 mV, 3.47 ± 0.37

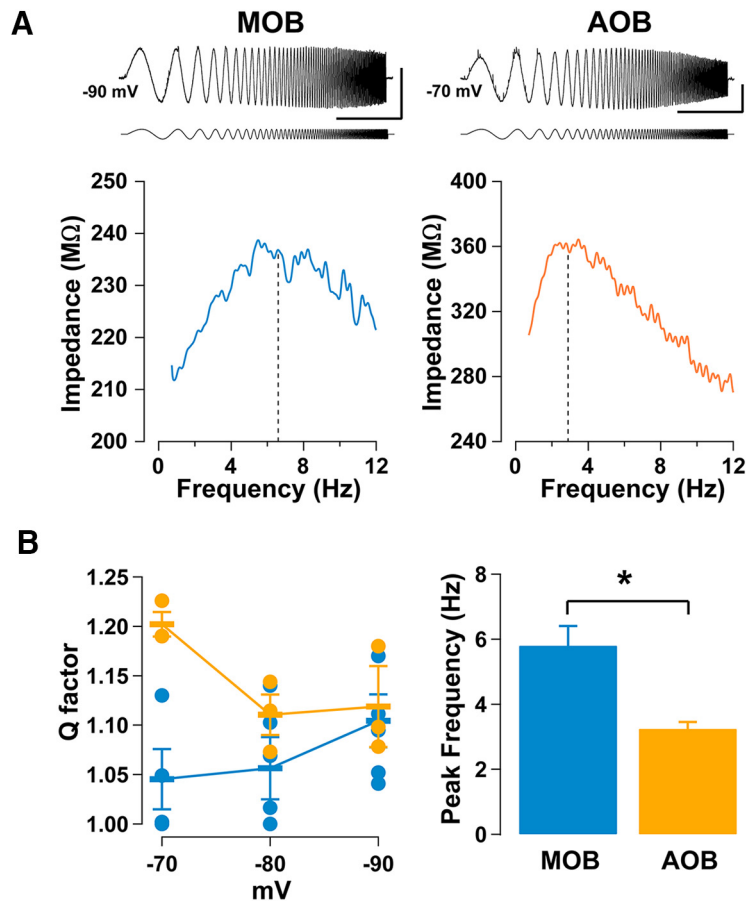


Figure 5. The subthreshold resonance in AOB and MOB GCs exhibits different voltage dependencies. **A**, Top, ZAP protocol applied to 4-week-old mature GCs labeled with GFP, in the MOB (left) and AOB (right), along with their respective impedance profiles (bottom). For the MOB GC, Q is 1.17 and f_{res} is 6.77 Hz, indicated by the vertical black dashed line; for the AOB GC, Q is 1.19 and f_{res} is 2.89 Hz, indicated by the dashed line. Calibration: 10 mV and 5 s. The ZAP stimulus amplitude is 20 pA for the MOB and 30 pA for the AOB. Bottom, Summary plots for the voltage dependency of Q , and the peak frequencies in MOB (blue) and AOB (orange) GCs ($n = 5$ and 3, respectively). **B**, Left, In MOB GCs, Q is strongest at more negative potentials, while in AOB GCs Q is larger at more positive potentials. Right, At -90 mV the average peak frequency in MOB GCs is significantly higher than in the AOB GCs (see Results).

Hz; -90 mV, 3.24 ± 0.21 Hz; $n = 3$; one-way ANOVA, $p > 0.6$). However, f_{res} was larger at more negative potentials in the MOB (-70 mV, $f_{res} = 1.09 \pm 0.45$ Hz; -90 mV, $f_{res} = 5.80 \pm 0.60$ Hz; $n = 5$; one-way ANOVA, $p < 0.001$). Thus, at -90 mV, the average peak frequency in MOB GCs is significantly higher than that in AOB GCs (Fig. 5B; Student's t test, $p < 0.03$). Furthermore, although the values did not reach significance, there was a tendency for the strength of resonance to increase at a more negative potential in MOB GCs (Fig. 5B; -70 mV, $Q = 1.04 \pm 0.03$; -90 mV, $Q = 1.10 \pm 0.02$; $n = 5$; one-way ANOVA, $p < 0.1$), while we observed the opposite in the AOB (-70 mV, $Q = 1.20 \pm 0.01$; -90 mV, $Q = 1.12 \pm 0.04$; $n = 4$; one-way ANOVA, $p < 0.03$).

Developmentally timed expression of I_h and subthreshold resonance in GCs in the MOB

GCs undergo a critical period and exhibit varied physiological properties over the course of development (Yamaguchi and Mori, 2005; Lledo et al., 2006; Lepousez et al., 2013); therefore, we compared I_h and subthreshold resonance expression in GCs at 2 and 6 weeks after birth

in the MOB. As shown in Fig. 6A, we found that I_h -mediated sag amplitude in GCs significantly increased between 2 weeks ($n = 5$) and 6 weeks ($n = 5$) after birth, (-1.9 ± 0.4 vs -4.6 ± 0.7 mV; Student's t test, $p < 0.006$). Similarly, the I_h amplitude nearly doubled between 2 and 6 weeks, although it was not significant within our sampled population of cells (-121.1 ± 31.1 vs -215.9 ± 37.0 pA; Student's t test, $p < 0.09$). Nevertheless, and in agreement with the developmental increase in I_h -mediated sag amplitude, resonance in GCs increased as a function of cell age (Fig. 6B). Between 2 and 6 weeks, resonance strength increased from 1.05 ± 0.01 to 1.10 ± 0.01 (Student's t test, $p < 0.02$). Interestingly, we also observed a developmental increase in f_{res} . At 2 weeks, f_{res} was 3.44 ± 0.98 Hz, and at 6 weeks, 7.32 ± 0.79 Hz (Student's t test, $p < 0.02$). Altogether, these results indicate that as GCs mature, their f_{res} becomes tuned towards the physiological breathing rates of mice (1–12 Hz).

Subthreshold resonance in other OB subtypes

We next examined whether other neurons in the OB circuit exhibit subthreshold resonance. In particular, we examined another inhibitory neuron, the PGC, which con-

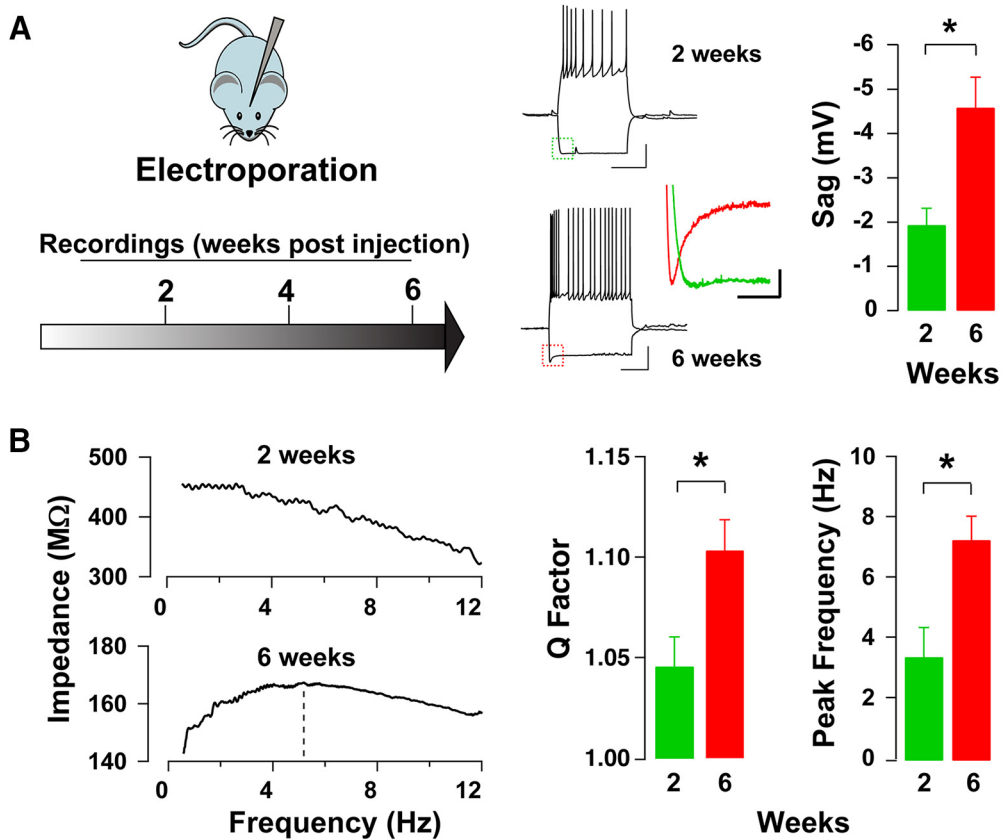


Figure 6. Postnatal development and subthreshold resonance in MOB GCs. **A**, Left, Diagram of the time course used for labeling and recording from GCs at different stages of development. Mice were electroporated at P1, and recordings were conducted at different postnatal weeks. Right, Sample current-clamp traces from labeled GCs at 2 and 6 weeks; recorded cells exhibit robust action potentials. At both ages, a hyperpolarizing current step elicits an I_h -mediated sag upon hyperpolarization (see inset). Calibration: 500 ms and 20 mV. The colored inset compares the sag amplitudes of the cells shown at 2 weeks (green) and 6 weeks (red). Calibration: 100 ms and 2 mV. The bar graph summarizes the change in sag amplitude between 2 and 6 weeks postlabeling. **B**, Left, Example plots of the impedance profile at 2 and 6 weeks after electroporation obtained using a ZAP protocol, corresponding to the cells seen above in **A**. At 2 weeks, Q is 1.02, while at 6 weeks Q is 1.14 and f_{res} is 5.18 Hz (dotted line). Right, Bar graphs showing the increase in Q factors and peak frequencies between 2 and 6 weeks.

tributes to network oscillations entrained by the respiratory cycle (Fukunaga et al., 2014). Therefore, we examined the presence of subthreshold resonance in PGCs sampled from animals older than P30. MOB PGCs exhibited a prominent I_h , with a sag potential of 5.2 ± 1.5 mV ($n = 9$). In recordings conducted with cAMP in the pipette, the V_{half} for I_h in PGCs was more positive than in MOB GCs (Fig. 7A; -82.6 ± 3.4 mV, $n = 9$; Student's t test, $p < 0.03$), while τ was significantly slower (81.1 ± 22.5 ; $n = 9$; Student's t test, $p < 0.01$), indicating differences in I_h between these inhibitory subtypes. Importantly, the majority of MOB PGCs (9 of 11 PGC) exhibited subthreshold resonance with a mean resonant frequency of 2.02 ± 0.16 Hz and a Q factor of 1.15 ± 0.03 . Moreover, application of ZD7288 completely abolished the subthreshold resonance (Fig. 7A; $n = 3$), indicating that subthreshold resonance in PGCs, like in GCs, depends on the expression of I_h .

In addition, we examined subthreshold resonance in MOB MCs, which have been previously shown to have I_h , with its expression decreasing with age (Angelo and Margrie, 2011; Yu et al., 2015). To this extent, we recorded

from two age groups of MCs, young (P11; $n = 8$) and old (P35; $n = 6$). In both age groups, MCs exhibited I_h , and, in agreement with previous work, I_h was more prominent in the younger group, with sag values of 8.9 ± 1.3 mV (young) and 5.0 ± 1.2 mV (old; Fig. 7B; Student's t test, $p < 0.02$). In these recordings, which we conducted with cAMP in the pipette, the V_{half} for I_h was -97 ± 2.8 mV, and τ was 500 ± 84 ms at P11 (MC τ vs PGC τ , Student's t test, $p < 0.0001$). Intriguingly, despite the expression of I_h , none of the recorded MCs, in either group exhibited subthreshold resonance. Furthermore, while I_h has also been observed in AOB MCs (data not shown; but see Gorin et al., 2016), we did not observe subthreshold resonance in recorded AOB MCs ($n = 5$) nor in AOB PGCs ($n = 4$).

Discussion

Throughout the brain, the regulation of membrane excitability by I_h plays an important role in neuronal function and network dynamics (Lüthi and McCormick, 1998; Narayanan and Johnston, 2007; George et al., 2009; Benarroch, 2013). Network synchrony dynamics are an im-

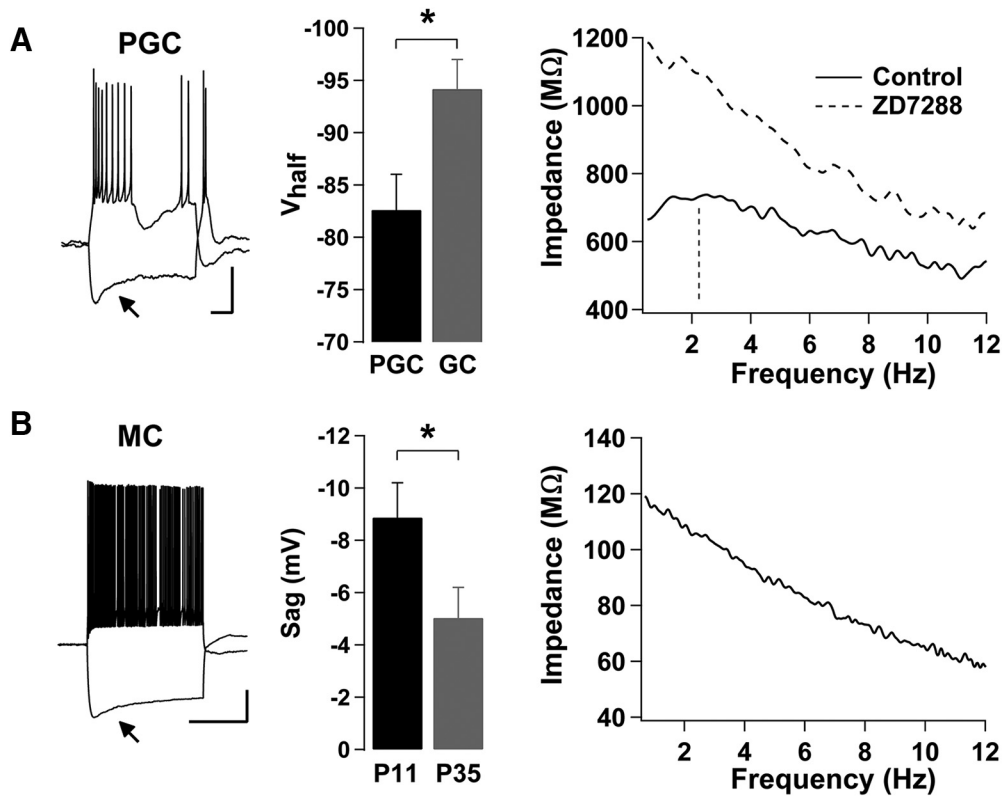


Figure 7. PGCs, but not MCs, exhibit I_h -mediated subthreshold resonance in the MOB. **A**, Left, Current-clamp responses of an MOB PGC; a hyperpolarizing current step (-10 pA) produces a sag in V_m (arrow), while a depolarizing current step (5 pA) elicits a burst of action potentials that is characteristic of PGCs. The resting V_m in this cell is -70 mV. Calibration: 20 mV and 200 ms. Middle, Summary bar graph showing that PGCs ($n = 9$) exhibit a more depolarized V_{half} than GCs ($n = 11$). Right, Impedance profile of a different PGC obtained using a ZAP protocol while holding at -70 mV. The subthreshold resonance is abolished in the presence of ZD7288 (control: black line, $f_{res} = 2.24$ Hz, indicated by the vertical dashed line, and $Q = 1.10$; ZD7288, dashed line, $f_{res} = f_{low}$, and $Q = 1$). **B**, Left, A current-clamp response of an MC at P11; a hyperpolarizing current step (-350 pA) produces a sag in V_m (arrow), while a depolarizing current step (350 pA) elicits a train of action potentials. The resting V_m in this cell is -60 mV. Calibration: 20 mV and 1 s. Middle, Summary bar graph showing the decrease in sag potential in MCs between P11 and P35 (P11, $n = 8$; P35, $n = 6$). Right, Impedance profile of the MC shown on the left, obtained using a ZAP protocol while held at -90 mV. Despite exhibiting I_h , the cell is nonresonant ($f_{res} = f_{low}$, and $Q = 1$).

portant component of the initial processing of odor signals in the OB. GCs comprise the largest population of inhibitory neurons in the OB, where they integrate local and afferent top-down signals to convey inhibition to output neurons, the MCs. Here, we show that I_h is present in GCs and that its expression follows the postnatal development of GCs, increasing with age. In addition, we show that GCs and MOB PGCs exhibit an I_h -dependent subthreshold resonance in the 1–12 Hz frequency range. These results suggest that the regulation of I_h can play a role on circuit dynamics in the OB entrained by respiration.

GCs are a heterogeneous group of neurons, and they exhibit distinct characteristics in the AOB and MOB, including synaptic properties and regulation by neuromodulatory transmitters (Castro et al., 2007; Zimnik et al., 2013; Burton and Urban, 2015; Smith et al., 2015). Accordingly, we found that the voltage sensitivity of I_h was modulated by cAMP in the MOB, but not in the AOB; nevertheless, I_h activation was faster in the AOB in the presence of cAMP. Among HCN subunits, HCN1 exhibit the fastest kinetics, but the weakest cAMP sensitivity

(Kaupp and Seifert, 2001; Accili et al., 2002), while HCN2 and HCN4 exhibit slower kinetics but are more cAMP sensitive (Kaupp and Seifert, 2001; Wainger et al., 2001). On the other hand, the HCN3 subunit exhibits slow kinetics but is not cAMP sensitive (Mistrik et al., 2005). Therefore, the kinetic parameters that we determined suggest that MOB GCs may express a combination HCN1, HCN2, and HCN4 subunits, while HCN3 subunits predominantly contribute to I_h in AOB GCs. In agreement with this possibility, all four HCN subunits are expressed in the OB, with HCN1 present in PGCs and GCs (Holderith et al., 2003; Fried et al., 2010), whereas HCN2 to HCN4 are more strongly expressed in the inner layers of the MOB (Notomi and Shigemoto, 2004). In the AOB, HCN1, HCN2, and HCN4 are moderately expressed, while HCN3 exhibits the strongest expression (Notomi and Shigemoto, 2004). Interestingly, despite exhibiting different kinetics and voltage sensitivity, our data with ZD7288 suggest that I_h in GCs of both regions is active at rest. In other neurons, I_h has been shown to contribute to baseline membrane excitability as well as dendritic integration (Magee, 1998; Fan et al., 2005; Benarroch, 2013); we propose a similar

function of I_h in GCs. In fact, as they lack axons, the integration of synaptic inputs and the output occurs solely in dendritic processes in GCs. Interestingly, GCs receive most afferent excitatory input in basal and proximal dendrites (Boyd et al., 2012; Markopoulos et al., 2012); therefore, the extent of regulation by these inputs of dendrodendritic synapses in distal regions of GC's apical dendrites could also be modulated by the tonic influence of I_h .

Mature AOB and MOB GCs exhibited subthreshold resonance, but there was a stark contrast in the membrane potential at which the resonance was strongest, as well as the peak frequency. In AOB GCs, subthreshold resonance was stronger at more depolarized potentials, and GCs were resonant in the delta range (1–4 Hz), whereas in MOB GC resonance was strongest at more negative potentials and resonance frequencies were in the theta range (4–12 Hz). These differences in GCs could underlie different circuit dynamics to accommodate their specific sensory inputs, which could be arriving at these specific frequency bands. In the MOB, inputs from the main olfactory epithelium are driven by breathing and arrive in the theta range (Smear et al., 2011; Manabe and Mori, 2013). Thus, in the theta range, subthreshold resonance for GCs may act as a bandpass filter for inputs at this frequency. In the AOB, however, the VNO is driven by the constriction and dilation of large blood vessels acting as a pump (Keverne, 1999); therefore, activity in the AOB may not be directly driven by breathing, but instead by the autonomic nervous system. Interestingly, previous studies (Dibattista et al., 2008; Cichy et al., 2015) have shown the presence of I_h in VNO sensory neurons; however, at this time it is unknown whether these cells exhibit subthreshold resonance. The lower frequency in AOB GCs suggests that the information processing and timing of inputs can work on a different timescale compared with the MOB. For example, the delta range resonance that we found in the AOB matches the lower-frequency baseline activity of AOB MCs near ~4 Hz (Luo et al., 2003), as well as VNO activity near ~1 Hz (Meredith, 1994). We note that differences in resonant frequency could be due to the contribution of other currents to the subthreshold resonance, for example, the M-current (I_m), another non-inactivating potassium current associated with the KCNQ family of ion channels (Hutcheon and Yarom, 2000; Hu et al., 2009); however, our data indicate that in the MOB the subthreshold resonance arises from I_h and passive properties of GCs. Further studies should examine the possibilities of other contributing currents known to play a role in subthreshold resonance, such as I_m , or I_{NaP} , and corroborated with a computational model.

In several brain regions, I_h underlies the expression of subthreshold resonance in principal neurons, as well as interneurons (Hutcheon and Yarom, 2000; Ulrich, 2002, 2014; Hu et al., 2009; Zemankovics et al., 2010; Vera et al., 2014). Our data indicate that inhibitory neurons in the MOB, the GC and PGCs, exhibit subthreshold resonance and that this property is dependent on the presence of I_h in both subtypes; however, in the AOB, I_h -mediated subthreshold resonance may be present only in

GCs. In fact, we found that subthreshold resonance in GCs strongly correlated with the presence of I_h . This was particularly evident when we compared I_h expression and the presence of resonance during postnatal development. In 2-week-old GCs, I_h was smaller and the resonance strength was low, while they were significantly larger at 6 weeks. Although we did not perform a developmental analysis in MOB PGCs, we hypothesize that they exhibit a similar developmental progression of I_h size and the expression of subthreshold resonance. However, this was not the case for principal neurons, the MCs. In agreement with a previous report (Yu et al., 2015), we observed a developmental decrease in I_h , yet, even when I_h was present, MCs did not exhibit I_h -mediated subthreshold resonance. However, it has been suggested that MOB MCs exhibit gamma-frequency subthreshold resonance due to a persistent Na^+ current (Brea et al., 2009), which was not addressed in our studies. Even in the AOB, I_h has been described in MCs, but blocking it had no effect on the intrinsic oscillations of MCs (Gorin et al., 2016). In agreement with these findings, we found no I_h -mediated subthreshold resonance in AOB MCs.

In summary, we provide evidence that the two predominant subtypes of inhibitory neurons in the MOB, the GCs and PGCs, exhibit subthreshold resonance mediated by I_h , but the primary output neurons, the MCs, do not. Various studies indicate that top-down neuromodulatory projections and cortical feedback principally target PGCs and GCs. Therefore, it is possible that subthreshold resonance and underlying I_h contribute to the integration of this top-down information. In addition, the activation of cAMP-dependent pathways by neuromodulators could lead to changes in I_h kinetics, affecting the resonant frequency and oscillations at the network level. Future *in vivo* studies will address how these properties of inhibitory neurons may contribute to OB circuit dynamics and odor processing.

References

- Accili EA, Proenza C, Baruscotti M, DiFrancesco D (2002) From funny current to HCN channels: 20 years of excitement. *News Physiol Sci* 17:32–37.
- Angelo K, Margrie TW (2011) Population diversity and function of hyperpolarization-activated current in olfactory bulb mitral cells. *Sci Rep* 1:50. [CrossRef](#) [Medline](#)
- Benarroch EE (2013) HCN channels: function and clinical implications. *Neurology* 80:304–310. [CrossRef](#) [Medline](#)
- Binns KE, Brennan PA (2005) Changes in electrophysiological activity in the accessory olfactory bulb and medial amygdala associated with mate recognition in mice. *Eur J Neurosci* 21:2529–2537. [CrossRef](#)
- Boyd AM, Sturgill JF, Poo C, Isaacson JS (2012) Cortical feedback control of olfactory bulb circuits. *Neuron* 76:1161–1174. [CrossRef](#) [Medline](#)
- Brody CD, Hopfield JJ (2003) Simple networks for spike-timing-based computation: with application to olfactory processing. *Neuron* 37:843–852. [Medline](#)
- Brea JN, Kay LM, & Kopell NJ (2009) Biophysical model for gamma rhythms in the olfactory bulb via subthreshold oscillations. *Proceedings of the National Academy of Sciences*, 106(51), 21954–21959.

- Burton SD, Urban NN (2015) Rapid feedforward inhibition and asynchronous excitation regulate granule cell activity in the mammalian main olfactory bulb. *J Neurosci* 35:14103–14122. [CrossRef](#)
- Cang J, & Isaacson JS (2003) In vivo whole-cell recording of odor-evoked synaptic transmission in the rat olfactory bulb. *The Journal of Neuroscience*, 23(10), 4108–4116. [Medline](#)
- Carleton A, Petreanu LT, Lansford R, Alvarez-Buylla A, Lledo PM (2003) Becoming a new neuron in the adult olfactory bulb. *Nat Neurosci* 6:507–518. [CrossRef](#) [Medline](#)
- Castro JB, Hovis KR, Urban NN (2007) Recurrent dendrodendritic inhibition of accessory olfactory bulb mitral cells requires activation of group I metabotropic glutamate receptors. *J Neurosci* 27:5664–5671. [CrossRef](#)
- Cichy A, Ackels T, Tsitoura C, Kahan A, Gronloh N, Söchtig M, Engelhardt CH, Ben-Shaul Y, Müller F, Spehr J, Spehr M (2015) Extracellular pH regulates excitability of vomeronasal sensory neurons. *J Neurosci* 35:4025–4039. [CrossRef](#)
- Craven KB, Zagotta WN (2006) CNG and HCN channels: two peas, one pod. *Annu Rev Physiol* 68:375–401. [CrossRef](#) [Medline](#)
- Dibattista M, Mazzatenta A, Grassi F, Tirindelli R, Menini A (2008) Hyperpolarization-activated cyclic nucleotide-gated channels in mouse vomeronasal sensory neurons. *J Neurophysiol* 100:576–586. [CrossRef](#)
- Egger V, Svoboda K, & Mainen ZF (2005) Dendrodendritic synaptic signals in olfactory bulb granule cells: local spine boost and global low-threshold spike. *The Journal of Neuroscience*, 25(14), 3521–3530. [CrossRef](#)
- Fan Y, Fricker D, Brager DH, Chen X, Lu HC, Chitwood R. a, Johnston D (2005) Activity-dependent decrease of excitability in rat hippocampal neurons through increases in I(h). *Nature Neuroscience* 8:1542–1551. [CrossRef](#)
- Fried HU, Kaupp UB, Müller F (2010) Hyperpolarization-activated and cyclic nucleotide-gated channels are differentially expressed in juxtglomerular cells in the olfactory bulb of mice. *Cell Tissue Res* 339:463–479. [CrossRef](#)
- Fukunaga I, Herb JT, Kollo M, Boyden ES, Schaefer AT (2014) Independent control of gamma and theta activity by distinct interneuron networks in the olfactory bulb. *Nat Neurosci* 17:1208–1216.
- George MS, Abbott LF, Siegelbaum SA (2009) HCN hyperpolarization-activated cation channels inhibit EPSPs by interactions with M-type K(+) channels. *Nat Neurosci* 12:577–584. [CrossRef](#)
- Gorin M, Tsitoura C, Kahan A, Watznauer K, Drose DR, Arts M, Mathar R, O'Connor S, Hanganu-Opatz IL, Ben-Shaul Y, Spehr M (2016) Interdependent conductances drive infraslow intrinsic rhythmogenesis in a subset of accessory olfactory bulb projection neurons. *J Neurosci* 36:3127–3144. [CrossRef](#)
- Gschwend O, Abraham NM, Lagier S, Begnaud F, Rodriguez I, Carleton A (2015) Neuronal pattern separation in the olfactory bulb improves odor discrimination learning. *Nat Neurosci* 18:1474–1482.
- Gutfreund Y, Yarom Y, Segev I (1995) Subthreshold oscillations and resonant frequency in guinea-pig cortical neurons: physiology and modelling. *J Physiol* 483:621–640. [CrossRef](#)
- Holderith NB, Shigemoto R, Nusser Z (2003) Cell type-dependent expression of HCN1 in the main olfactory bulb. *Eur J Neurosci* 18:344–354. [CrossRef](#)
- Hu H, Vervaeke K, Storm JF (2002) Two forms of electrical resonance at theta frequencies, generated by M-current, h-current and persistent Na⁺ current in rat hippocampal pyramidal cells. *J Physiol* 545:783–805. [CrossRef](#)
- Hu H, Vervaeke K, Graham LJ, Storm JF (2009) Complementary theta resonance filtering by two spatially segregated mechanisms in CA1 hippocampal pyramidal neurons. *J Neurosci* 29:14472–14483. [CrossRef](#)
- Hutcheon B, Yarom Y (2000) Resonance, oscillation and the intrinsic frequency preferences of neurons. *Trends Neurosci* 23:216–222.
- Kaupp UB, Seifert R (2001) Molecular diversity of pacemaker ion channels. *Annu Rev Physiol* 63:235–257. [CrossRef](#) [Medline](#)
- Kay LM (2014) Circuit oscillations in odor perception and memory. *Prog Brain Res* 208:223–251.
- Keverne EB (1999) The vomeronasal organ. *Science* 286:716–720. [Medline](#)
- Lagier S, Carleton A, Lledo PM (2004) Interplay between local GABAergic interneurons and relay neurons generates gamma oscillations in the rat olfactory bulb. *J Neurosci* 24:4382–4392.
- Larriva-Sahd J (2008) The accessory olfactory bulb in the adult rat: a cytological study of its cell types, neuropil, neuronal modules, and interactions with the main olfactory system. *J Comp Neurol* 510:309–350. [CrossRef](#)
- Lepousez G, Lledo PM (2013) Odor discrimination requires proper olfactory fast oscillations in awake mice. *Neuron* 80:1010–1024. [CrossRef](#) [Medline](#)
- Lepousez G, Valley MT, Lledo PM (2013) The impact of adult neurogenesis on olfactory bulb circuits and computations. *Annu Rev Physiol* 75:339–363. [CrossRef](#) [Medline](#)
- Leszkowicz E, Khan S, Ng S, Ved N, Swallow DL, Brennan PA (2012) Noradrenaline-induced enhancement of oscillatory local field potentials in the mouse accessory olfactory bulb does not depend on disinhibition of mitral cells. *Eur J Neurosci* 35:1433–1445. [CrossRef](#)
- Lledo PM, Gheusi G, Vincent J (2005) Information processing in the mammalian olfactory system. *Physiol Rev* 85:281–317. [CrossRef](#)
- Lledo PM, Alonso M, Grubb MS (2006) Adult neurogenesis and functional plasticity in neuronal circuits. *Nat Rev Neurosci* 7:179–193. [CrossRef](#)
- Ludwig A, Zong X, Jeglitsch M, Hofmann F, Biel M (1998) A family of hyperpolarization-activated mammalian cation channels. *Nature* 393:587–591. [CrossRef](#) [Medline](#)
- Lüthi A, McCormick DA (1998) H-current: properties of a neuronal and network pacemaker. *Neuron* 21:9–12. [Medline](#)
- Luo M, Fee MS, Katz LC (2003) Encoding phomonal signals in the accessory olfactory bulb of behaving mice. *Science* 299:1196–1201. [CrossRef](#) [Medline](#)
- Magee JC (1998) Dendritic hyperpolarization-activated currents modify the integrative properties of hippocampal CA1 pyramidal neurons. *J Neurosci* 18:7613–7624.
- Manabe H, Mori K (2013) Sniff rhythm-paced fast and slow gamma-oscillations in the olfactory bulb: relation to tufted and mitral cells and behavioral states. *J Neurophysiol* 110:1593–1599. [CrossRef](#) [Medline](#)
- Markopoulos F, Rokni D, Gire DDH, Murthy VNV (2012) Functional properties of cortical feedback projections to the olfactory bulb. *Neuron* 76:16. [CrossRef](#)
- McCormick DA, Pape HC (1990) Properties of a hyperpolarization-activated cation current and its role in rhythmic oscillation in thalamic relay neurons. *J Physiol* 431:319–342. [CrossRef](#)
- Meredith M (1994) Chronic recording of vomeronasal pump activation in awake behaving hamsters. *Physiol Behav* 56:345–354. [Medline](#)
- Mistrik P, Mader R, Michalakis S, Weidinger M, Pfeifer A, Biel M (2005) The murine HCN3 gene encodes a hyperpolarization-activated cation channel with slow kinetics and unique response to cyclic nucleotides. *J Biol Chem* 280:27056–27061. [CrossRef](#)
- Narayanan R, Johnston D (2007) Long-term potentiation in rat hippocampal neurons is accompanied by spatially widespread changes in intrinsic oscillatory dynamics and excitability. *Neuron* 56:1061–1075. [CrossRef](#)
- Notomi T, Shigemoto R (2004) Immunohistochemical localization of Ih channel subunits, HCN1-4, in the rat brain. *J Comp Neurol* 471:241–276. [CrossRef](#) [Medline](#)
- Osinski BL, Kay LM (2016) Granule cell excitability regulates gamma and beta oscillations in a model of the olfactory bulb dendrodendritic microcircuit. *J Neurophysiol* 116:522–539.
- Pape HC, McCormick DA (1989) Noradrenaline and serotonin selectively modulate thalamic burst firing by enhancing a hyperpolarization-activated cation current. *Nature* 340:715–718. [CrossRef](#)
- Petreanu L, Alvarez-Buylla A (2002) Maturation and death of adult-born olfactory bulb granule neurons: role of olfaction. *J Neurosci* 22:6106–6113. [Medline](#)

- Price JL, Powell TP (1970) The morphology of the granule cells of the olfactory bulb. *J Cell Sci* 7:91–123.
- Shepherd GM (1972) Synaptic organization of the mammalian olfactory bulb. *Physiol Rev* 52:864–917. [Medline](#)
- Smear M, Shusterman R, O'Connor R, Bozza T, Rinberg D (2011) Perception of sniff phase in mouse olfaction. *Nature* 479:397–400. [CrossRef Medline](#)
- Smith RS, Hu R, DeSouza a, Eberly CL, Krahe K, Chan W, Araneda RC (2015) Differential muscarinic modulation in the olfactory bulb. *J Neurosci* 35:10773–10785. [CrossRef Medline](#)
- Ulrich D (2002) Dendritic resonance in rat neocortical pyramidal cells. *J Neurophysiol* 87:2753–2759. [Medline](#)
- Ulrich D (2014) Subthreshold delta-frequency resonance in thalamic reticular neurons. *Eur J Neurosci* 40:2600–2607.
- Valsecchi F, Ramos-Espiritu LS, Buck J, Levin LR, Manfredi G (2013) cAMP and mitochondria. *Physiology (Bethesda)* 28:199–209. [CrossRef Medline](#)
- van Brederode JFM, Berger a. J (2011) GAD67-GFP+ neurons in the Nucleus of Roller. II. Subthreshold and firing resonance properties. *J Neurophysiol* 105:249–278. [CrossRef Medline](#)
- Vera J, Pezzoli M, Pereira U, Bacigalupo J, Sanhueza M (2014) Electrical resonance in the θ frequency range in olfactory amygdala neurons. *PLoS One* 9:e85826. [CrossRef Medline](#)
- Wainger BJ, DeGennaro M, Santoro B, Siegelbaum S. a, Tibbs GR (2001) Molecular mechanism of cAMP modulation of HCN pacemaker channels. *Nature* 411:805–810. [CrossRef Medline](#)
- Winner B, Cooper-Kuhn CM, Aigner R, Winkler J, Kuhn HG (2002) Long-term survival and cell death of newly generated neurons in the adult rat olfactory bulb. *Eur J Neurosci* 16:1681–1689. [Medline](#)
- Yamaguchi M, Mori K (2005) Critical period for sensory experience-dependent survival of newly generated granule cells in the adult mouse olfactory bulb. *Proc Natl Acad Sci U S A* 102:9697–9702. [CrossRef](#)
- Yu Y, Burton SD, Tripathy SJ, Urban NN (2015) Postnatal development attunes olfactory bulb mitral cells to high frequency signaling. *J Neurophysiol* 114:2830–2842.
- Zemankovics R, Káli S, Paulsen O, Freund TF, Hájos N (2010) Differences in subthreshold resonance of hippocampal pyramidal cells and interneurons: the role of h-current and passive membrane characteristics. *J Physiol* 588:2109–2132. [CrossRef](#)
- Zimnik NC, Treadway T, Smith RS, Araneda RC (2013) $\alpha(1A)$ -Adrenergic regulation of inhibition in the olfactory bulb. *J Physiol* 591:1631–1643. [CrossRef Medline](#)