


# Development and Validation of Prognostic Survival Nomograms for Patients with Anal Canal Cancer: A SEER-Based Study

Jie Tang<sup>1</sup>  
Liqun Zhu<sup>1</sup>  
Yuejiao Huang<sup>2,3</sup>  
Lixiang Yang<sup>4</sup>  
Dangen Ge<sup>5</sup>  
Zhengyu Hu<sup>6</sup>  
Chun Wang<sup>1</sup> 

<sup>1</sup>Department of Oncology, Liyang People's Hospital, Liyang, 213300, People's Republic of China; <sup>2</sup>Medical School, Nantong University, Nantong, 226019, People's Republic of China; <sup>3</sup>Department of Medical Oncology, Affiliated Tumor Hospital of Nantong University, Nantong, 226399, People's Republic of China; <sup>4</sup>Department of Neurosurgery, Affiliated Zhongda Hospital of Southeast University, Nanjing, 210009, People's Republic of China; <sup>5</sup>Department of Pharmacy, Liyang People's Hospital, Liyang, 213300, People's Republic of China; <sup>6</sup>Department of General Surgery, Shanghai Tenth People's Hospital, Affiliated to Tongji University School of Medicine, Shanghai, 200072, People's Republic of China

**Objective:** Anal canal cancer is a rare malignancy with increasing incidence in recent times. This study aimed to develop two nomograms to predict the overall survival (OS) and cancer-specific survival (CSS) of patients with anal canal cancer.

**Methods:** Information of patients with anal canal cancer from 2004 to 2015 was extracted from the surveillance, epidemiology, and end results (SEER) database. Cox analysis was used to select the risk factors for prognosis, and nomograms were constructed using the R software. The C-index, area under the curve (AUC) of time-dependent receiver operating characteristic (ROC) curves, calibration plot and decision curve analysis (DCA) were used to assess the clinical utility of the nomograms.

**Results:** A total of 2458 patients with malignant tumours of the anal canal were screened out. Sex, age, marital status, histological type, grade, tumour size, AJCC stage, SEER stage and chemotherapy were independent prognostic factors for OS, whereas sex, age, race, histological type, grade, tumour size, AJCC stage, SEER stage and radiotherapy were independent prognostic factors for CSS. In the training cohort, the C-index value for OS nomogram was 0.73 (95% CI, 0.69–0.77), and the AUC values that predicted the 1-, 3- and 5-year survival rates were 0.764, 0.758 and 0.760, respectively, whereas the C-index value for CSS nomogram model was 0.74 (95% CI, 0.69–0.79), and the AUC values were 0.763, 0.769 and 0.763, respectively. The calibration plot and DCA curves demonstrated good prediction performance of the model in both the training and validation cohorts.

**Conclusion:** The established nomogram is a visualisation tool that can effectively predict the OS and CSS of patients with anal canal cancer.

**Keywords:** anal canal cancer, cancer specific survival, nomogram, overall survival, prognosis

## Introduction

Anal canal cancer is a malignancy that develops in the terminal part of the intestinal tract, extending from the anal margin to the dentate line. Although it is a rare cancer accounting for only 2.6% of gastrointestinal cancers,<sup>1</sup> morbidity is increasing at an average rate of 2.2% every year.<sup>2</sup> Histologically, columnar tissue lines the upper anal canal, whereas the squamous and transitional epithelia line the canal below the pectinate line.<sup>3</sup> In Western countries, approximately 90% of anal canal malignancies have a squamous differentiation, whereas in Asian countries, adenocarcinoma is the dominant pathological type,<sup>4,5</sup> with mucinous, melanoma, small cell carcinoma and undifferentiated

Correspondence: Chun Wang  
Department of Oncology, Liyang People's Hospital, 70 Jianshe Road, Liyang, Jiangsu, 213300, People's Republic of China  
Email zlkwangchun@163.com

cancer accounting for the remaining proportion.<sup>6</sup> Although concurrent chemoradiotherapy with 5-fluorouracil (FU) and mitomycin (MMC)<sup>7,8</sup> is recommended for patients with squamous epithelium malignancy (SEM), approximately 30% of patients do not respond entirely to this treatment.<sup>9</sup> In addition, owing to the low incidence of the remaining types, oncologists encounter a challenge in conducting in-depth research for clinical outcomes. Currently, the American Joint Committee on Cancer (AJCC) staging system is the prevalent tool that is recommended by National Comprehensive Cancer Network guidelines to predict prognosis. Notably, the impact of several related factors on the prognosis cannot be reflected in the staging, such as age, sex, histological type and treatment strategies.<sup>10</sup>

The nomogram is a new graphic multivariate model with the ability to integrate the relative contribution of each prognostic variable on the outcome for prognosis prediction. In addition, a nomogram can display prognosis prediction results and guide individualised treatment for patients with tumours based on their personal and disease characteristics.<sup>11,12</sup> Tsikitis et al<sup>13</sup> constructed nomograms of overall survival (OS) and salvage abdominoperineal resection for anal cancer patients based on data from 1778 anal cancer patients in the US National Cancer Database between 1998 and 2010. Although the potency of nomograms<sup>14–17</sup> has been verified in various cancers, sufficient studies have not been performed on its application in patients with anal canal cancer. Therefore, using data from the Surveillance, Epidemiology, and End Results (SEER) database, this study aimed to establish a valuable nomogram based on the Cox proportional hazard regression model to predict the 1-, 3- and 5-year survival of patients with different pathological types of anal canal cancer and validate it.

## Materials and Methods

### Patients

Our research relied on the SEER program, which is one of the most widely used and reliable publicly accessible cancer databases, covering approximately 28% of the US population.<sup>18</sup> We extracted patients primarily with malignant tumours in the anal canal from the database (SEER 18 Regs Custom Data, released in April 2019) between 2004 and 2015 by using

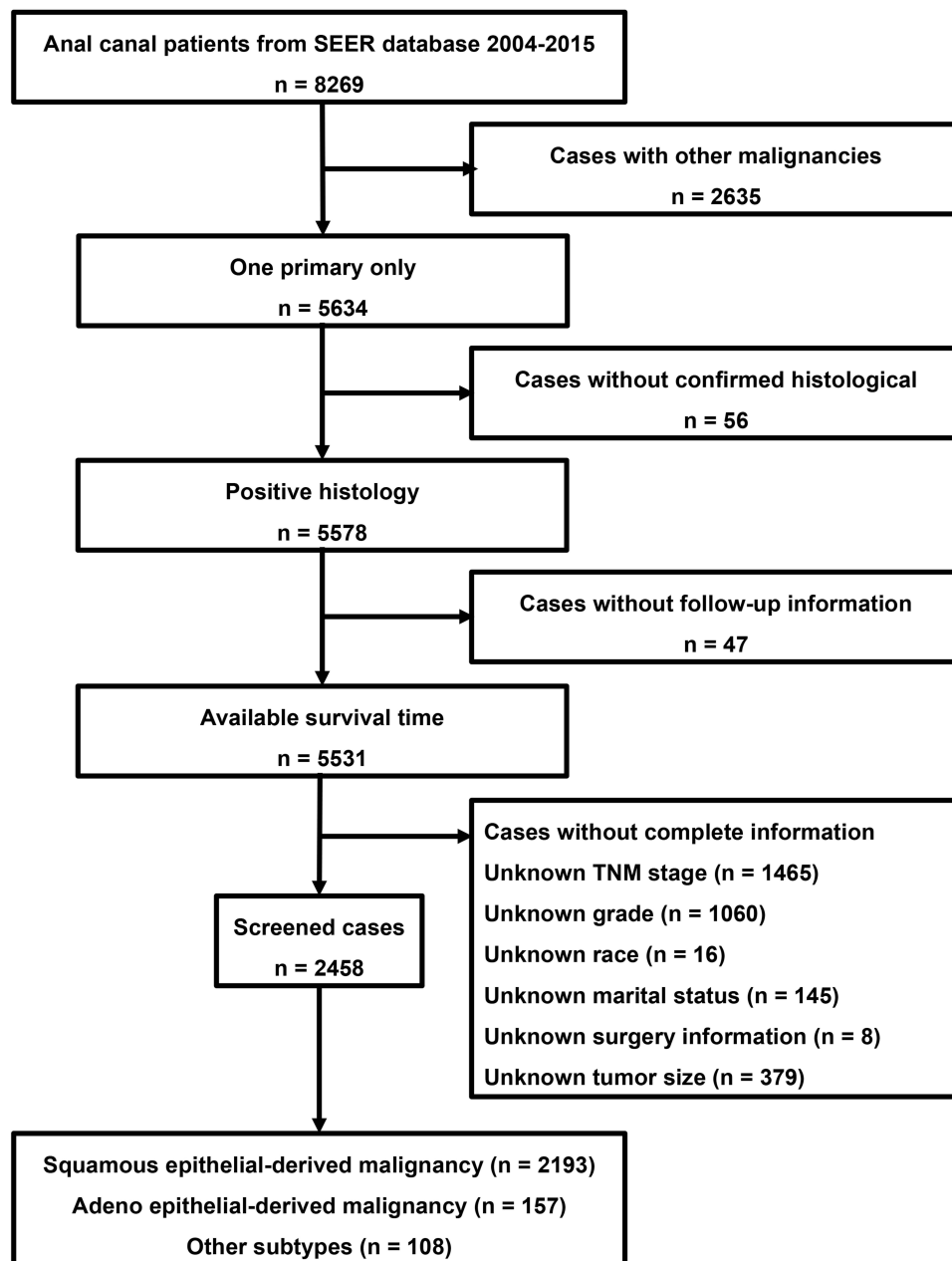
SEER\*Stat (version 8.3.8) software, with the following extraction criteria: (1) site and morphology: primary site-labelled C21.1'Anal Canal', (2) year of diagnosis: 2004–2015.

A total of 8269 patients with their original information along with their demographic and baseline clinicopathological characteristic variables were retrieved from the database, including a patient ID number, age at diagnosis, primary tumour sites, sex, race, marital status, histological type (ICD-O-3 Hist/Behav, malignant), tumour size, tumour stage and differentiation. Surgical information, chemotherapy data and radiotherapy information were also extracted in terms of treatment. The clinical outcome was OS and cancer-specific survival (CSS). OS was defined as the time from initial diagnosis of anal canal cancer to the last follow-up or death. CSS was defined as the survival time from the initial diagnosis to death attributable to anal canal cancer. Patients with the following conditions were excluded from our study: (1) multiple primary tumours, (2) unclear diagnosis outcomes, (3) death to follow-up, (4) unclear TNM stage classification according to AJCC sixth edition, (5) unclear histological differentiation degree, (6) unclear race information, (7) unclear marital status, (8) unclear surgical information and (9) unclear tumour size. Finally, 2458 patients were selected for further analysis. The censoring process was depicted in [Figure 1](#) as a flow chart.

The study followed the Declaration of Helsinki (as revised in 2013) and used previously collected de-identified data<sup>19</sup> that was deemed exempt from review by the Ethics Committee of the Liyang People's Hospital.

### Statistical Analysis

The X-tile software (version 3.6.1; copyright Yale University) was used to calculate the optimal cut-off value for tumour size and age at diagnosis to translate the two parameters into categorical variables. The Cox proportional hazard regression models were constructed for univariate and multivariate survival analysis and to select the independent prognostic factors associated with survival outcomes using SPSS software (IBM corporation, version 24.0.0). The independent prognostic factors were incorporated to plot the nomograms to predict the 1-, 3- and 5-year CSS and OS of patients with anal canal cancer. In this study, the nomograms



**Figure 1** Flow diagram for the selection of patients with anal canal cancer from the SEER database between 2004 and 2015.

**Abbreviations:** SEM, squamous epithelial-derived malignancy; AEM, adeno epithelial-derived malignancy.

were constructed by the training set and were validated in the validation set. The area under the curve (AUC) of time-dependent receiver operating characteristic (ROC) curves and the concordance indices (C-indices) were computed and the calibration curves were plotted to assess the predictive ability of the model. The decision curve analysis (DCA) was used to evaluate the utility of the nomogram for decision-making.<sup>20</sup> Patients

were classified into the high- and low-risk groups based on the nomogram, and Kaplan–Meier curves were used to plot survival curves for the high- and low-risk groups. The analysis was performed using the R package (rms, Hmisc, lattice, survival, formula, ggplot2, rmda, time ROC and foreign) loaded in R software (version 1.1.463). *P*-value < 0.05 was deemed statistically significant.

**Table I** Demographic and Clinical Data of the Patients with Anal Canal Cancer

Characteristics		Train Cohort	Validation Cohort	P-value
		n=1720(%)	n=738(%)	
<b>Gender</b>	Male	594(34.5)	246(33.3)	0.565
	Female	1126(65.5)	492(66.7)	
<b>Age (years)</b>	Range	26–104	22–97	0.954
	Median	59	59	
	Mean	60.3±12.1	60.2±12.3	
<b>Race</b>	White	1487(86.5)	642(87.0)	0.579
	Black	184(10.7)	71(9.6)	
	Other/NA	49(2.8)	25(3.4)	
<b>Marital status</b>	Married	750(43.6)	338(45.8)	0.315
	Non-married	970(56.4)	400(54.2)	
<b>Tumor size (cm)</b>	Range	0.1–88.8	0.1–15.0	0.525
	Median	3.1	3.3	
	Mean	3.9±3.3	3.8±2.3	
<b>Grade</b>	Well, I	211(12.3)	84(11.4)	0.795
	Moderately, II	784(45.6)	352(47.7)	
	Poorly, III	691(40.2)	288(39.0)	
	Anaplastic, IV	34(2.0)	14(1.9)	
<b>Histological type</b>	SEM	1529(88.9)	664(90.0)	0.505
	AEM	110(6.4)	47(6.4)	
	Other	81(4.7)	27(3.6)	
<b>AJCC stage</b>	I	366(21.3)	167(22.6)	0.277
	II	694(40.3)	319(43.2)	
	III A	208(12.1)	88(11.9)	
	III B	353(20.5)	125(16.9)	
	IV	99(5.8)	39 (5.3)	
<b>T stage</b>	T1	440(25.6)	194(26.3)	0.957
	T2	857(49.8)	362(49.1)	
	T3	286(16.6)	126(17.1)	
	T4	137(8.0)	56(7.6)	
<b>N stage</b>	N0	1137(66.1)	522(70.7)	0.127
	N1	204(11.9)	77(10.4)	
	N2	236(13.7)	92(12.5)	
	N3	143(8.3)	47(6.4)	

(Continued)



Table 1 (Continued).

Characteristics		Train Cohort	Validation Cohort	P-value
		n=1720(%)	n=738(%)	
<b>M stage</b>	M0	1621(94.2)	699(94.7)	0.642
	M1	99(5.8)	39(5.3)	
<b>SEER stage</b>	Localized	846(49.2)	383(51.9)	0.445
	Regional	682(39.7)	274(37.1)	
	Distant	192(11.2)	81(11.0)	
<b>Surgery</b>	No Surgery	1027(59.7)	456(61.8)	0.443
	Local Resection	576(33.5)	228(30.9)	
	Radical Resection	117(6.8)	54(7.3)	
<b>Chemotherapy</b>	Yes	1458(84.8)	620(84.0)	0.634
	No/NA	262(15.2)	118(16.0)	
<b>Radiotherapy</b>	Yes	1496(87.0)	648(87.8)	0.573
	No/NA	224(13.0)	90(12.2)	
<b>Survival Months</b>	Range	1–155	1–155	0.174
	Median	42	40	
	Mean	53.8±40.5	51.4±39.8	

**Abbreviations:** SEM, squamous epithelial-derived malignancy; AEM, adeno epithelial-derived malignancy; SEER, surveillance, epidemiology, and end results; AJCC, American Joint Committee on Cancer.

## Results

### Clinicopathologic and Demographic Characteristics

After applying a rigorous selection process, 2458 patients with anal canal cancer were retrieved from the SEER database. According to a 7:3 ratio, 1720 patients were randomly assigned to the training cohort and 738 patients were randomly assigned to the validation cohort. Table 1 presents the detailed clinicopathologic and demographic information. The sample consisted of approximately 65.8% females, and the majority of the sample was white (n = 2129) and non-married patients (n = 1370). X-tile software was applied to calculate the optimal cut-off value for tumour size and age. Patients were categorised into two age groups (22–76 years and >76 years) and three tumour size groups (<2.8 cm, 2.8–6.2 cm and >6.2 cm). Anal canal cancer is a highly heterogeneous tumour with as many as 31 pathological subtypes

(Table 2). In our study, they were categorised into SEM, adeno epithelium malignancy (AEM), and other rare subtypes, with SEM accounting for approximately 89.2% of the total. In addition, patients with low differentiation, early-stage disease (stage I/II, stage T1/T2), lack of lymph node metastasis and lack of distant metastasis accounted for a large proportion. Chemotherapy and radiotherapy were performed in 84.5% and 87.2% of patients, respectively. However, 32.7% of patients underwent local resection surgery with 171 patients undergoing intestinal resection or laparotomy operation.

### Identification of Prognostic Factors

Univariate analysis indicated that the factors presented in Tables 3 and 4 with *P* values < 0.05 were closely related to patient OS and CSS, respectively. In the multiple analysis, it was indicated that patients who were men, aged >76 years, unmarried and presented

**Table 2** ICD-O-3 Code

ICD-O-3 Code	Hist/Behav	n
8010/3	Carcinoma, NOS	8
8020/3	Carcinoma, undifferentiated, NOS	1
8041/3	Small cell carcinoma, NOS	10
8045/3	Combined small cell carcinoma	1
8051/3	Verrucous carcinoma, NOS	7
8052/3	Papillary squamous cell carcinoma	3
8070/3	Squamous cell carcinoma, NOS	1715
8071/3	Squamous cell carcinoma, keratinizing, NOS	224
8072/3	Squamous cell carcinoma, large cell, nonkeratinizing, NOS	92
8073/3	Squamous cell carcinoma, small cell, nonkeratinizing	1
8074/3	Squamous cell carcinoma, spindle cell	2
8076/3	Squamous cell carcinoma, micro-invasive	1
8083/3	Basaloid squamous cell carcinoma	151
8094/3	Basosquamous carcinoma	4
8120/3	Transitional cell carcinoma, NOS	1
8123/3	Basaloid carcinoma	21
8124/3	Cloacogenic carcinoma	30
8140/3	Adenocarcinoma, NOS	108
8210/3	Adenocarcinoma in adenomatous polyp	7
8215/3	Adenocarcinoma of anal glands	3
8246/3	Neuroendocrine carcinoma, NOS	10
8255/3	Adenocarcinoma with mixed subtypes	5
8261/3	Adenocarcinoma in villous adenoma	4
8263/3	Adenocarcinoma in tubulovillous adenoma	7
8430/3	Mucoepidermoid carcinoma	2
8480/3	Mucinous adenocarcinoma	18
8481/3	Mucin-producing adenocarcinoma	5
8490/3	Signet ring cell carcinoma	4
8542/3	Paget disease, extramammary (except Paget disease of bone)	3
8560/3	Adenosquamous carcinoma	8
8574/3	Adenocarcinoma with neuroendocrine differentiation	2

with a large tumour size, poorly differentiated (grade IV) tumour, AEM or other rare subtypes, an advanced AJCC stage, distant stage in the SEER system and a lack of chemotherapy had a poorer OS than their counterparts (Table 3). However, the outcome of CSS was affected by risk factors including sex, age, race, histological type, grade, tumour size, AJCC stage, SEER stage and radiotherapy (yes or no), which were recognised as independent prognostic factors for CSS (Table 4).

## Construction of the Prognostic Nomogram

Based on the independent prognostic factors selected by multivariate Cox analysis, two nomograms were established for OS (Figure 2A) and CSS (Figure 2B). The nomogram demonstrated that age had the greatest contribution, followed by the AJCC stage, SEER stage and tumour size, to the prediction of OS of patients with anal canal cancer. Every significant variable was ascribed a weighted score ranging from 1 to 100. The scores were then summed up to determine the value of the perpendicular intersection of the survival probability axis and the total score axis, implying a 1-, 3-, 5-year survival prognosis for patients with anal canal cancer. This method was used for the construction of a nomogram for CSS.

## Validation of a Prognostic Nomogram

The C-index, ROC curve and calibration plot were used to differentiate and calibrate the utility of the two nomograms. In the training cohort, the C-index value was 0.73 (95% CI, 0.69–0.77) and the AUC values of the ROC curve that predicted 1-, 3- and 5-year OS were 0.764, 0.758 and 0.760, respectively (Figure 3A). However, the C-index value was 0.74 (95% CI, 0.69–0.79) and the AUC values that predicted 1-, 3- and 5-year CSS were 0.763, 0.769 and 0.763, respectively (Figure 3B). In addition, calibration plots of OS and CSS nomograms revealed a high degree of consistency between nomogram prediction and actual data (Figure 4A–F).

The C-index values were 0.72 (95% CI, 0.66–0.78) for nomogram predicting OS and 0.73 (95% CI, 0.66–0.80) for nomogram predicting CSS in the validation cohort. As presented in Figure 3C and D, the AUC values were 0.767, 0.725 and 0.771 for the projected 1-, 3- and 5-year OS, respectively, and 0.767, 0.747 and 0.771 for the projected 1-, 3- and 5-year CSS, respectively. In addition, satisfactory performance of predicted and actual values was exhibited by the calibration plot in the validation cohort (Figure 5A–F).

## Comparison of the Nomogram and Other Staging Systems

To compare the nomogram model to the sixth edition AJCC TNM staging and SEER staging systems, we

**Table 3** Survival Analyses of Overall Survival for Anal Canal Cancer Patients

Characteristics	Univariate Analysis		Multivariate Analysis	
	HR (95% CI)	P-value	HR (95% CI)	P-value
<b>Gender</b>				
Male	Reference		Reference	
Female	0.629(0.533–0.742)	<0.001	0.565(0.475–0.671)	<0.001
<b>Age (years)</b>				
≤76	Reference		Reference	
>76	2.805(2.285–3.445)	<0.001	3.040(2.444–3.780)	<0.001
<b>Race</b>				
White	Reference		Reference	
Black	1.524(1.206–1.927)	<0.001	-	0.106
Other	1.128(0.713–1.784)	0.608	-	0.907
<b>Marital status</b>				
Married	Reference		Reference	
Non-married	1.451(1.223–1.721)	<0.001	1.219(1.023–1.454)	0.027
<b>Tumor size (cm)</b>				
<2.8	Reference		Reference	
2.8–6.2	1.720(1.415–2.091)	<0.001	1.389(1.071–1.802)	0.013
>6.2	3.126(2.406–4.061)	<0.001	2.038(1.482–2.803)	<0.001
<b>Grade</b>				
I	Reference		Reference	
II	1.108(0.839–1.464)	0.470	1.186(0.891–1.581)	0.243
III	1.304(0.987–1.723)	0.062	1.418(1.060–1.898)	0.019
IV	2.113(1.250–3.571)	0.005	2.287(1.298–4.029)	0.004
<b>Histological type</b>				
SEM	Reference		Reference	
AEM	1.899(1.439–2.506)	<0.001	1.531(1.145–2.047)	0.004
Other	1.921(1.423–2.593)	<0.001	1.698(1.224–2.356)	0.002
<b>AJCC stage</b>				
I	Reference		Reference	
II	1.790(1.374–2.332)	<0.001	1.317(0.931–1.865)	0.120
III A	1.991(1.434–2.765)	<0.001	1.233(0.781–1.946)	0.370
III B	2.758(2.077–3.663)	<0.001	1.666(1.092–2.542)	0.018
IV	7.051(5.057–9.830)	<0.001	2.761 (1.567–4.866)	<0.001

(Continued)

Table 3 (Continued).

Characteristics	Univariate Analysis		Multivariate Analysis	
	HR (95% CI)	P-value	HR (95% CI)	P-value
<b>T stage</b>				
T1	Reference		Reference	
T2	1.572(1.253–1.973)	<0.001	-	0.279
T3	2.469(1.898–3.212)	<0.001	-	0.901
T4	2.689(1.962–3.686)	<0.001	-	0.702
<b>N stage</b>				
N0	Reference		Reference	
N1	1.521(1.188–1.947)	0.001	-	0.174
N2	1.681(1.336–2.115)	<0.001	-	0.200
N3	2.322(1.790–3.013)	<0.001	-	0.396
<b>M stage</b>				
M0	Reference		Reference	
M1	3.904(3.028–5.033)	<0.001	-	>0.05
<b>SEER stage</b>				
Localized	Reference	<0.001	Reference	0.011
Regional	1.629(1.356–1.957)		1.405(1.083–1.824)	
Distant	3.711(2.946–4.675)	<0.001	2.223(1.441–3.428)	<0.001
<b>Surgery</b>				
No surgery	Reference		Reference	
Local resection	0.752(0.624–0.906)	0.003	-	0.946
Radical resection	1.639(1.253–2.144)	<0.001	-	0.847
<b>Chemotherapy</b>				
Yes	Reference		Reference	
No/NA	1.485(1.207–1.825)	<0.001	1.783(1.429–2.226)	<0.001
<b>Radiotherapy</b>				
Yes	Reference		Reference	
No/NA	1.488(1.195–1.853)	<0.001	-	0.504

**Abbreviations:** SEM, squamous epithelial-derived malignancy; AEM, adeno epithelial-derived malignancy; SEER, surveillance, epidemiology, and end results; AJCC, American Joint Committee on Cancer.

used DCA to evaluate the utility of the new model for predicting prognosis. As presented in Figure 6, this novel model was clinically useful, having a larger net benefit in predicting OS (Figure 6A and C) and CSS (Figure 6B and D) than that of AJCC stage and SEER

staging systems both in the training and validation cohorts.

In addition, in the training and validation cohorts, we divided patients into the high and low-risk groups based on the nomogram. The Kaplan–Meier curves

**Table 4** Survival Analyses of Cancer-Specific Survival for Anal Canal Cancer Patients

Characteristics	Univariate Analysis		Multivariate Analysis	
	HR (95% CI)	P-value	HR (95% CI)	P-value
<b>Gender</b>				
Male	Reference		Reference	
Female	0.545(0.447–0.665)	<0.001	0.499(0.406–0.614)	<0.001
<b>Age (years)</b>				
≤76	Reference		Reference	
>76	1.934 (1.468–2.548)	<0.001	2.500(1.877–3.331)	<0.001
<b>Race</b>				
White	Reference		Reference	
Black	1.792(1.369–2.345)	<0.001	1.410(1.069–1.859)	0.015
Other	1.363(0.812–2.288)	0.242	1.233(0.729–2.088)	0.435
<b>Marital status</b>				
Married	Reference		Reference	
Non-married	1.280(1.044–1.568)	0.017	-	0.615
<b>Tumor size (cm)</b>				
<2.8	Reference		Reference	
2.8–6.2	1.792(1.404–2.286)	<0.001	1.723(1.138–2.608)	0.010
>6.2	3.812(2.806–5.180)	<0.001	2.644(1.560–4.480)	<0.001
<b>Grade</b>				
I	Reference		Reference	
II	1.184(0.831–1.685)	0.350	1.238(0.861–1.779)	0.249
III	1.531(1.079–2.173)	0.017	1.625(1.128–2.341)	0.009
IV	2.454(1.307–4.608)	0.005	2.479(1.245–4.939)	0.010
<b>Histological type</b>				
SEM	Reference		Reference	
AEM	2.072 (1.501–2.859)	<0.001	1.649(1.171–2.322)	0.004
Other	2.213(1.560–3.138)	<0.001	1.904(1.295–2.800)	0.001
<b>AJCC stage</b>				
I	Reference		Reference	
II	1.914(1.344–2.727)	<0.001	2.444(1.385–4.314)	0.002
III A	2.608(1.726–3.940)	<0.001	2.384 (1.267–4.486)	0.007
III B	3.514(2.439–5.065)	<0.001	3.093(1.690–5.661)	<0.001
IV	11.002(7.389–16.383)	<0.001	4.998(2.247–11.117)	<0.001

(Continued)

Table 4 (Continued).

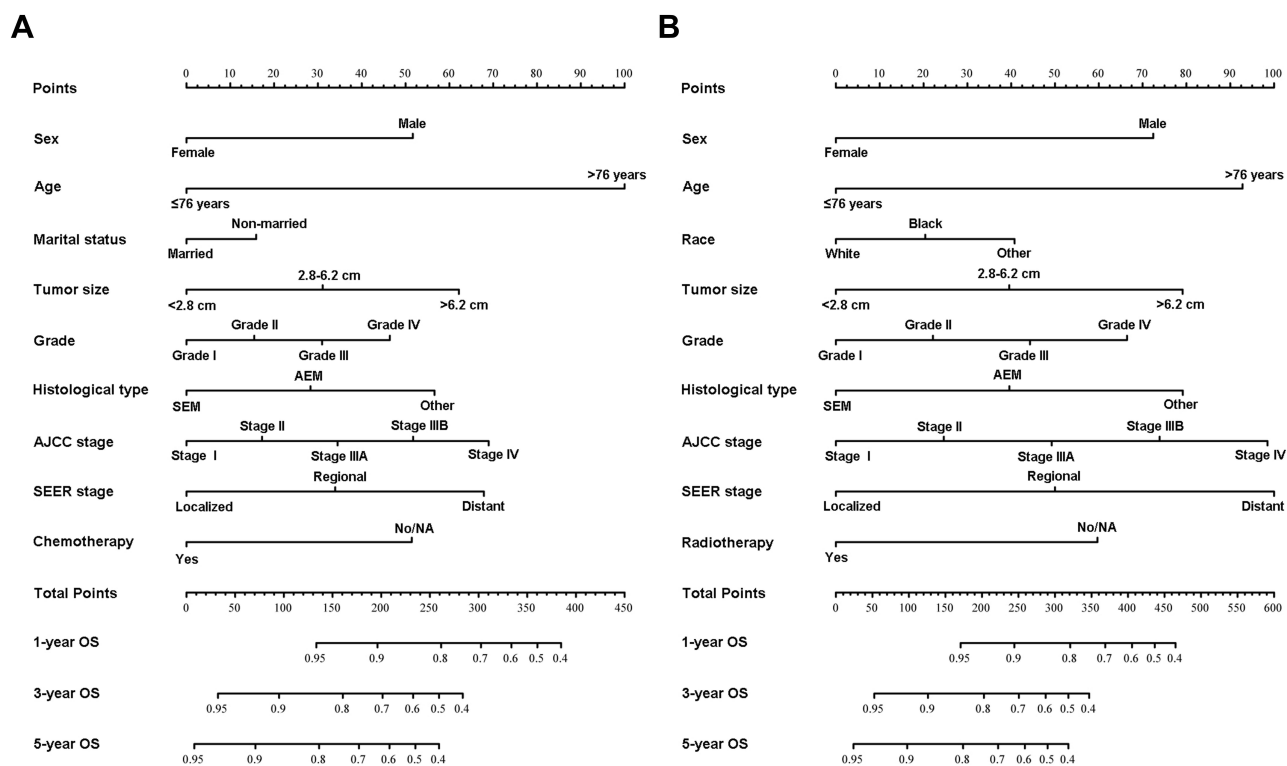
Characteristics	Univariate Analysis		Multivariate Analysis	
	HR (95% CI)	P-value	HR (95% CI)	P-value
<b>T stage</b>				
T1	Reference		Reference	
T2	1.533(1.152–2.039)	0.003	-	0.043
T3	2.991(2.184–4.096)	<0.001	-	0.868
T4	3.106(2.135–4.519)	<0.001	-	0.929
<b>N stage</b>				
N0	Reference		Reference	
N1	1.898(1.425–2.528)	<0.001	-	0.225
N2	1.993(1.520–2.613)	<0.001	-	0.327
N3	2.979(2.218–4.000)	<0.001	-	0.394
<b>M stage</b>				
M0	Reference		Reference	
M1	5.262(4.014–6.897)	<0.001	-	>0.05
<b>SEER stage</b>				
Localized	Reference		Reference	
Regional	2.058 (1.631–2.598)	<0.001	1.514(1.085–2.114)	0.015
Distant	5.421(4.133–7.111)	<0.001	2.717(1.402–5.264)	0.003
<b>Surgery</b>				
No surgery	Reference		Reference	
Local resection	0.676(0.535–0.853)	0.001	-	0.766
Radical resection	1.938(1.436–2.615)	<0.001	-	0.330
<b>Chemotherapy</b>				
Yes	Reference		-	
No/NA	1.262(0.972–1.639)	0.081	-	-
<b>Radiotherapy</b>				
Yes	Reference		Reference	
No/NA	1.508(1.159–1.962)	0.002	1.664(1.250–2.214)	<0.001

**Abbreviations:** SEM, squamous epithelial-derived malignancy; AEM, adeno epithelial-derived malignancy; SEER, surveillance, epidemiology, and end results; AJCC, American Joint Committee on Cancer.

revealed that low-risk patients had better OS and CSS than high-risk patients both in the training and validation cohorts (Figure 7).

## Discussion

Although anal canal malignancies are uncommon in gastrointestinal neoplasms, their incidence has



**Figure 2** Nomogram predicting 1-, 3- and 5-year overall survival (OS) and cancer-specific (CSS) survival rate of patients with anal canal cancer. **(A)** Nomogram to predict 1-, 3- and 5-year OS for patients with anal canal cancer; **(B)** Nomogram to predict 1-, 3- and 5-year CSS for patients with anal canal cancer.

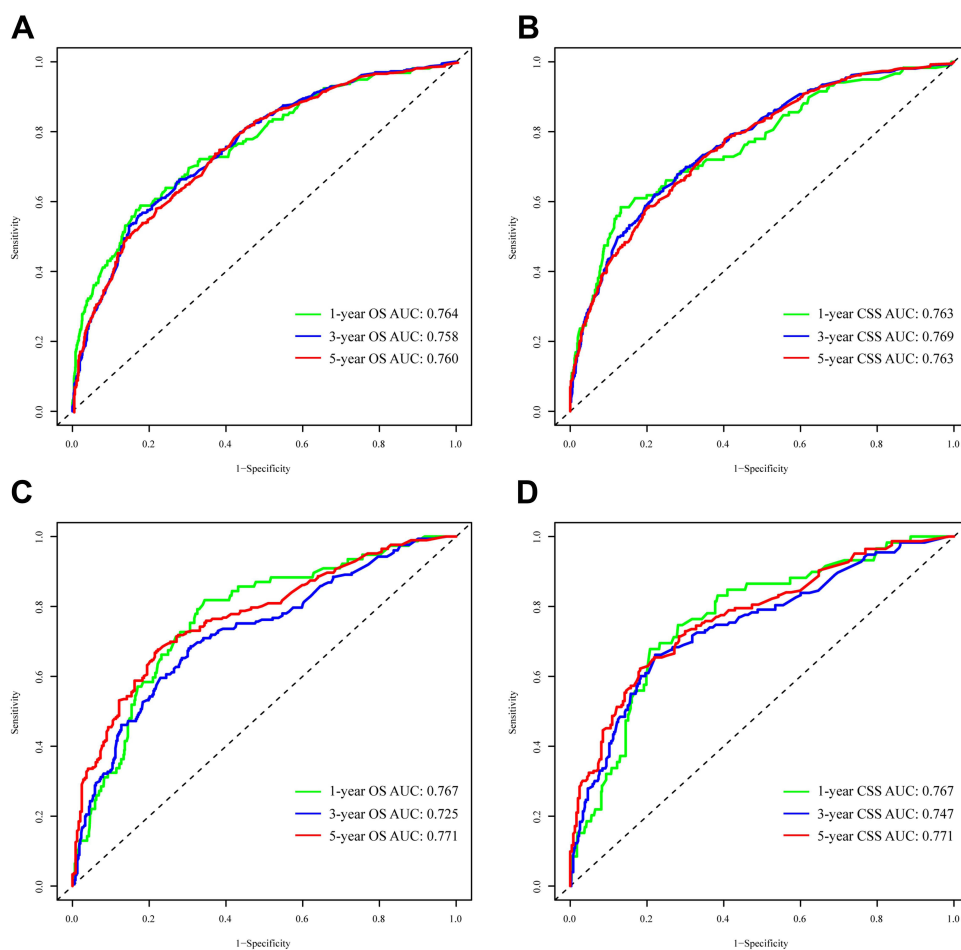
**Abbreviations:** AJCC, American Joint Committee on Cancer; SEER, surveillance, epidemiology, and end results; OS, overall survival; CSS, cancer-specific survival; SEM, squamous epithelial-derived malignancy; AEM, adeno epithelial-derived malignancy.

increased rapidly over the last 20 years owing to human immunodeficiency virus (HIV) and human papillomavirus (HPV) infections, particularly the HPV16 subtype.<sup>4,21–23</sup> Currently, the prognosis prediction tool used for anal canal cancer is the TNM staging system, although it has a limitation of not considering other significant factors that have an impact on survival. Therefore, we constructed a nomogram model for patients with anal canal cancer to comprehensively and precisely predict the survival prognosis to supplement the vacancy of application of this novel model in patients with anal canal cancer.

After screening in the SEER database, a total of 2458 patients with anal canal cancer with their diagnostic data, therapeutic data and survival outcomes were retrieved. Of the 2458 patients, 1720 patients were assigned to the training cohort and 738 patients were assigned to the validation cohort in our study. Sex, age, marital status, histological type, grade, tumour size, AJCC stage, SEER stage and

chemotherapy measurement were identified as independent prognostic factors for OS after univariate and multivariate analyses, whereas sex, age, race, histological type, grade, tumour size, AJCC stage, SEER stage, and radiotherapy were independent prognostic factors for CSS. Our results revealed that factors associated with worse OS and CSS included male sex, age more than 76 years and large tumour size, which was consistent with previous studies.<sup>24–26</sup> Furthermore, patients of Black race were observed to have a poorer CSS than patients of other races, which is consistent with other studies that have revealed that Black patients had a worse prognosis.<sup>24</sup> We observed that non-married patients had worse OS than that of married patients, which may be related to the lack of perianal or stoma care, which leads to perianal and stoma infection detection and tumour recurrence.<sup>27</sup> Tumour grade was proven to be an independent prognostic predictor of OS and CSS in our study. Previous studies have reported that the grade of tumour





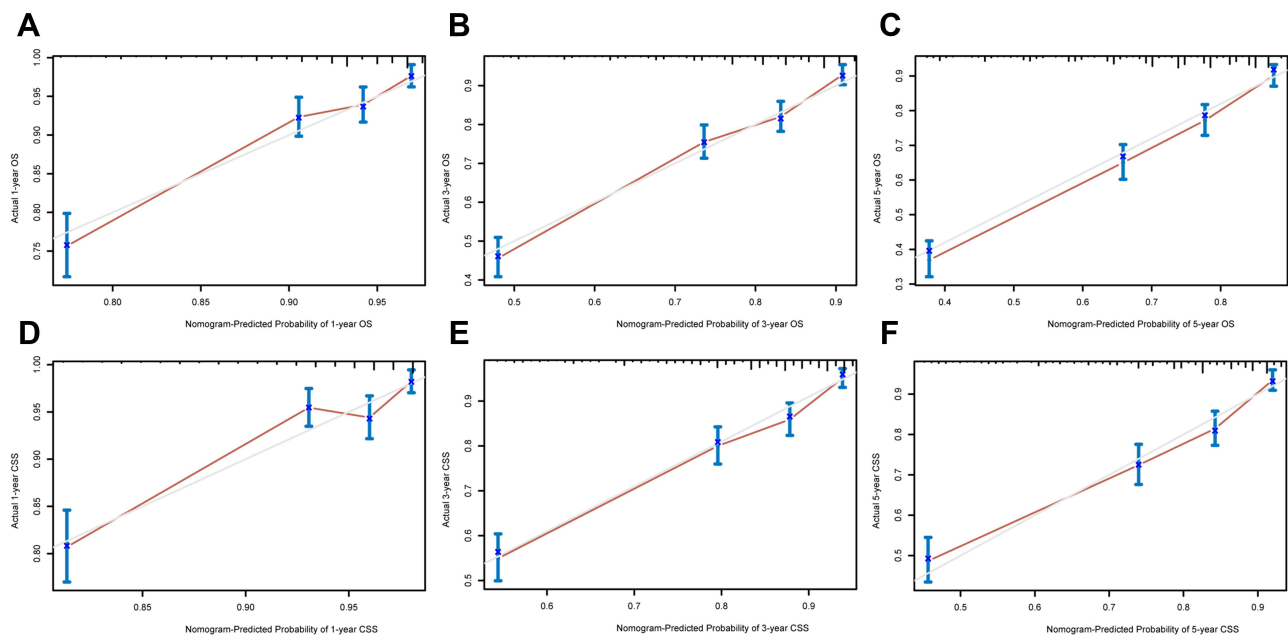
**Figure 3** Time-dependent ROC curves. **(A)** Time-dependent ROC curves of the OS nomogram reveal that the AUCs in the training cohort are 0.767, 0.728 and 0.768 for predicting 1-, 3- and 5-year OS, respectively; **(B)** Time-dependent ROC curves of the CSS nomogram in the training cohort reveal that the AUCs are 0.780, 0.744 and 0.768 for predicting 1-, 3- and 5-year CSS, respectively; **(C)** Time-dependent ROC curves of the OS nomogram reveal that the AUCs in the validation cohort are 0.757, 0.757 and 0.738 for predicting 1-, 3- and 5-year OS, respectively; **(D)** Time-dependent ROC curves of the CSS nomogram in the validation cohort reveal that the AUCs are 0.743, 0.754 and 0.729 for predicting 1-, 3- and 5-year CSS, respectively.

**Abbreviations:** ROC, receiver operating characteristic; AUC, area under the curve; OS, overall survival; CSS, cancer-specific survival.

differentiation is related to the likelihood of metastasis and is a significant prognostic factor.<sup>6</sup>

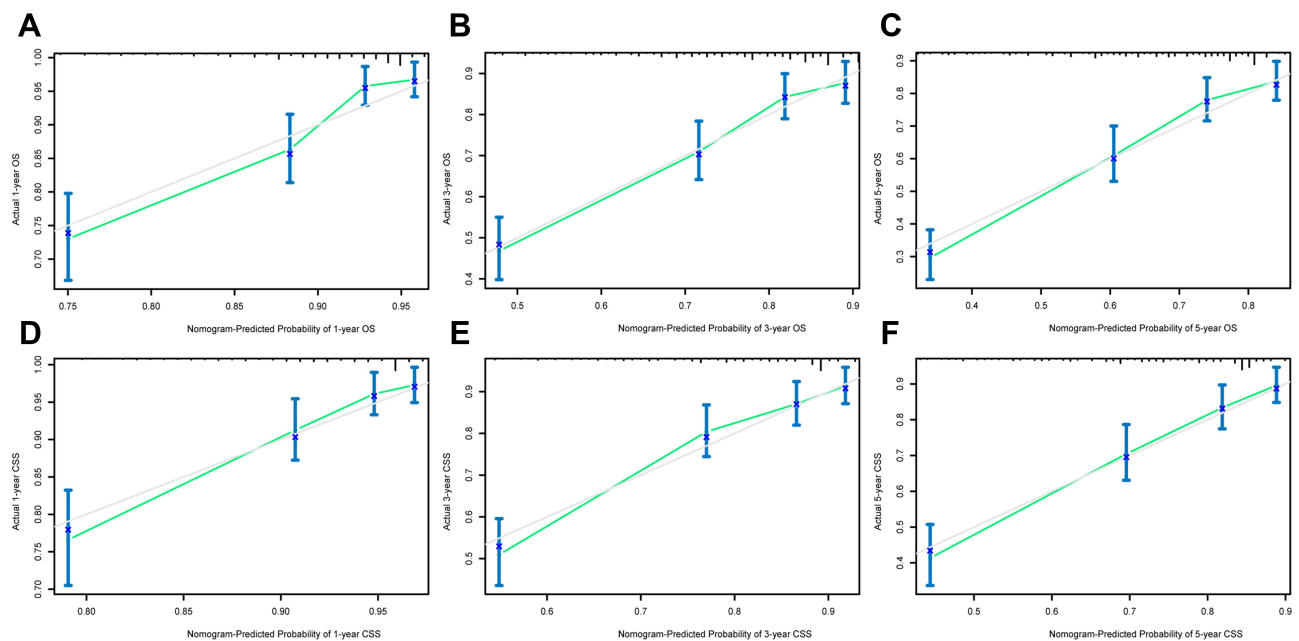
It is acknowledged that the AJCC system is considered the gold standard to predict the prognosis of patients with tumours.<sup>12</sup> In our study, the hazard ratio (HR) values of stage II relative to stage I were 1.317 ( $P = 0.120$ ) and 2.444 ( $P = 0.002$ ) for OS and CSS, respectively, while the HR values for stage IV relative to the stage I increased to 2.761 ( $P < 0.001$ ) and 4.998 ( $P < 0.001$ ), indicating that as the tumour progresses, the HR values of OS and CSS gradually increase. Yu et al demonstrated that the SEER stage was statistically associated with CSS in gastric cancer. However, in our study, the SEER stage was the independent

factor for OS and CSS in anal canal cancer.<sup>28</sup> In addition, based on univariate and multivariate analyses, we observed that patients with AEM and other rare subtypes had poor OS and CSS, which was consistent with previous findings indicating that AEM and other rare subtype neoplasms are more aggressive.<sup>29</sup> In our study, receiving chemotherapy was a good independent prognostic factor for OS, and radiotherapy was an independent prognostic factor for CSS. Chemoradiotherapy was generally accepted to be the first line of treatment for patients with SEM.<sup>30–32</sup> However, there is still controversy on the treatment strategy for adenocarcinoma and neuroendocrine carcinoma, which have very low incidence. Considering



**Figure 4** Calibration curves in the training cohort. (A–C) Calibration curves of the nomogram for predicting 1-, 3- and 5-year OS; (D–F) Calibration curves of the nomogram for predicting 1-, 3- and 5-year CSS.

**Abbreviations:** OS, overall survival; CSS, cancer-specific survival.



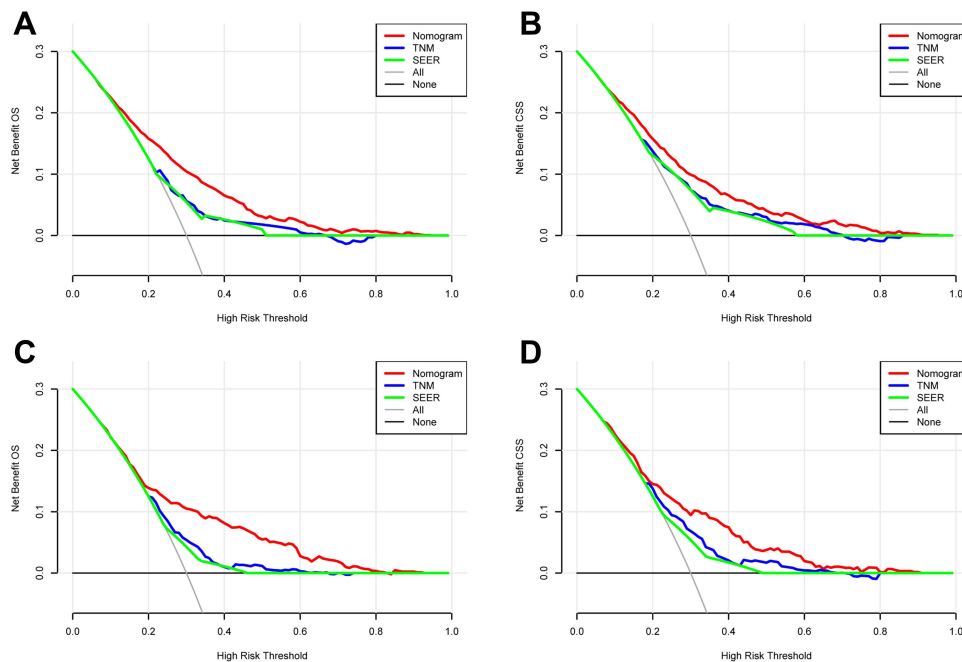
**Figure 5** Calibration curves in the validation cohort. (A–C) Calibration curves of the nomogram for predicting 1-, 3- and 5-year OS; (D–F) calibration curves of the nomogram for predicting 1-, 3- and 5-year CSS.

**Abbreviations:** OS, overall survival; CSS, cancer-specific survival.

that our study investigated all types of anal canal cancer, the result mentioned above seems reasonable. In addition, surgery was not an independent factor of OS or CSS because surgery is often the salvage

measure for patients with intestinal obstruction and bleeding.<sup>25</sup>

The anal canal is the excretion tube that connects the rectum and anus, making surgery measuring



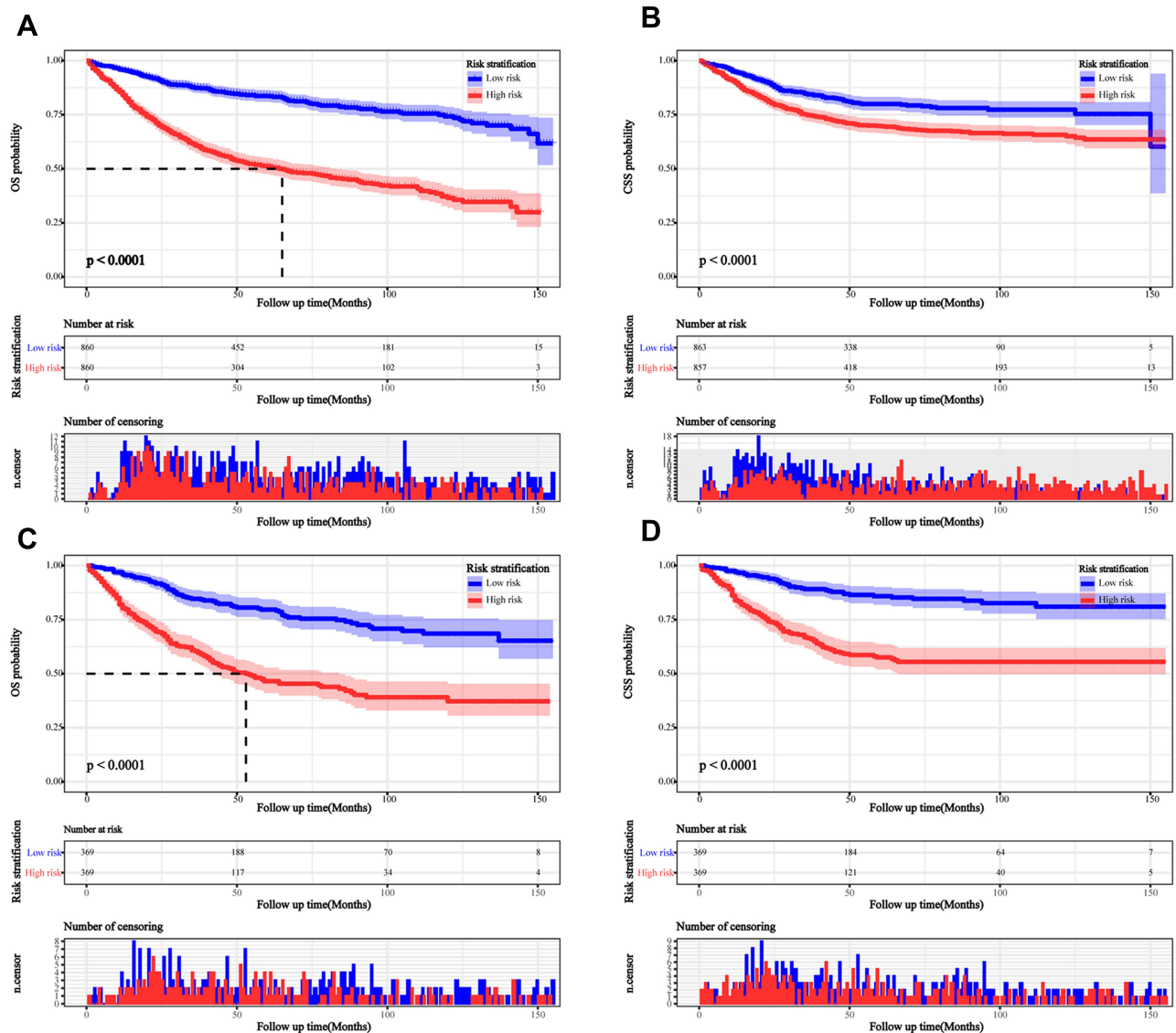
**Figure 6** DCA curves of the nomogram, AJCC stage and SEER staging system. (A) DCA curves for OS in the training cohort; (B) DCA curves for CSS in the training cohort; (C) DCA curves for OS in the validation cohort; (D) DCA curves for CSS in the validation cohort.

**Abbreviations:** DCA, decision curve analysis; AJCC, American Joint Committee on Cancer; SEER, Surveillance, epidemiology, and end results; OS, overall survival; CSS, cancer-specific survival.

complicated. With the development of minimally invasive and endoscopic techniques, surgeons and patients always want to preserve the sphincter and anal function as much as possible. In our study, it was presented that the prognosis of patients in the local resection surgery group was better than those in the non-surgical and radical surgery groups. Radical surgery for anal cancer requires complete resection of the anus and abdominal stoma, which is a time-consuming and traumatic operation and postoperative stoma care is difficult, all of which plays a greater impact on the early recovery and prognosis of patients with anal cancer.<sup>29</sup> In our data, patients in the radical surgery group have an advanced AJCC stage and a larger tumour size than the local surgery group (Table 5). These advanced tumours often invade the tissues surrounding the intestine (vaginal and perineal tissues). Surgeons should select extended surgery methods (such as Miles) to ensure negative margins and reduce the recurrence rate, resulting in large wounds and a poor prognosis. This also explains why patients in the radical surgery group have a worse prognosis than patients in the local resection group.

Nomograms were constructed based on the multivariate results and required validation to avoid overfitting and to improve generalisability.<sup>33</sup> The C-index and AUC values were used to assess the accuracy and discriminative ability of nomograms of OS and CSS for patients with anal canal cancer.<sup>34</sup> Here, the C-index values of nomograms for 1-, 3- and 5-year OS and CSS prediction were over 0.72 and the AUC values were higher than 0.73, with the calibration curves plotted indicating the good performance of this novel model.<sup>11</sup> Additionally, DCA was employed to ensure that the nomogram is a relatively good predictor for the survival time of patients with anal canal cancer.

This retrospective study based on the SEER database has certain limitations. First, samples with incomplete and unknown information recorded in the SEER database would be removed before analysis, owing to a degree of bias. Second, possible significant prognostic factors such as the volume and dose of radiotherapy, the specific chemotherapy regimens and HPV infection information were not documented in the SEER database and hence could not be analysed in



**Figure 7** Kaplan–Meier curves survival curves for the high- and low-risk groups. (A) Kaplan–Meier curve for OS in the training cohort; (B) Kaplan–Meier curve for CSS in the training cohort; (C) Kaplan–Meier curve for OS in the validation cohort; (D) Kaplan–Meier curve for CSS in the validation cohort.

**Abbreviations:** OS, overall survival; CSS, cancer-specific survival.

our study. Third, if the nomogram can be tested in the clinical data for multiple regions and centres, the precision accuracy will be more convincing. Last, there is a lack of systematic analysis of rare tumour subtypes such as anal adenocarcinoma, basal cell carcinoma and neuroendocrine carcinoma owing to the small size of samples obtained from the SEER database and would require further investigation.

## Conclusion

In conclusion, our study constructed and verified two nomograms based on the SEER database as a universally

applicable and reliable prediction model for patients with anal canal cancer, which can predict the dynamic survival rate of patients at different time points, using a large number of patients and various clinical information. Nomograms may be applied to guide clinicians more concisely to judge the prognosis, provide a guideline for follow-up treatment and improve the prognosis of patients.

## Abbreviations

OS, overall survival; CSS, cancer-specific survival; ROC, receiver operating characteristic; AUC, area under the curve; SEER, surveillance, epidemiology, and end results; DCA,

**Table 5** Comparison of AJCC Stage and Tumor Size Between Local Resection Group and Radical Resection Group

Characteristics		Local Resection N (%)	Radical Resection N (%)	P-value
<b>Tumor size (cm)</b>				
	<2.8	454(50.8)	37(20.0)	<0.001
	2.8–5.4	281(31.5)	78(42.2)	
	>5.4	158(17.7)	70(37.8)	
<b>AJCC stage</b>				
	I/II	714(80.0)	92(49.7)	<0.001
	III/IV	179(20.0)	93(50.3)	

**Abbreviation:** AJCC, American Joint Committee on Cancer.

decision curve analysis; AJCC, American Joint Committee on Cancer; C-indices, concordance indices; SEM, squamous epithelium malignancy; AEM, adeno epithelium malignancy; HIV, human immunodeficiency virus; HPV, human papillomavirus.

## Data Sharing Statement

The datasets used and analysed during the current study are available from the corresponding author on reasonable request.

## Ethical Approval

The study was conducted in accordance with the Declaration of Helsinki (as revised in 2013). This study used previously collected deidentified data, which was deemed exempt from review by the Ethics Committee of the Liyang People's Hospital.

## Acknowledgments

The authors thank all patients and investigators involved in these studies, especially the SEER database. We also thank Bullet Edits for editing this manuscript.

## Author Contributions

All authors made a significant contribution to the work reported, whether that is in the conception, study design, execution, acquisition of data, analysis and interpretation, or in all these areas; took part in drafting, revising or critically reviewing the article; gave final approval of the version to be published; have agreed on the journal to which the article has been submitted; and agree to be accountable for all aspects of the work.

## Funding

This study was supported by the Young Talent Development Plan of Changzhou Health Commission (CZQM2021023).

## Disclosure

The authors report no conflicts of interest in this work.

## References

1. Siegel RL, Miller KD, Fedewa SA, et al. Colorectal cancer statistics, 2017. *CA Cancer J Clin*. 2017;67(3):177–193. doi:10.3322/caac.21395
2. Eng C, Jácome AA, Das P, et al. A phase II study of capecitabine/oxaliplatin with concurrent radiotherapy in locally advanced squamous cell carcinoma of the anal canal. *Clin Colorectal Cancer*. 2019;18(4):301–306. doi:10.1016/j.clcc.2019.06.003
3. Leonard D, Beddy D, Dozois EJ. Neoplasms of anal canal and perianal skin. *Clin Colon Rectal Surg*. 2011;24(1):54–63. doi:10.1055/s-0031-1272824
4. Herfs M, Longuespée R, Quick CM, et al. Proteomic signatures reveal a dualistic and clinically relevant classification of anal canal carcinoma. *J Pathol*. 2017;241(4):522–533. doi:10.1002/path.4858
5. Islami F, Ferlay J, Lortet-Tieulent J, Bray F, Jemal A. International trends in anal cancer incidence rates. *Int J Epidemiol*. 2017;46(3):924–938. doi:10.1093/ije/dyw276
6. Young AN, Jacob E, Willauer P, Smucker L, Monzon R, Oceguera L. Anal cancer. *Surg Clin North Am*. 2020;100(3):629–634. doi:10.1016/j.suc.2020.02.007
7. Gunderson LL, Winter KA, Ajani JA, et al. Long-term update of US GI intergroup RTOG 98-11 Phase III trial for anal carcinoma: survival, relapse, and colostomy failure with concurrent chemoradiation involving fluorouracil/mitomycin versus fluorouracil/cisplatin. *J Clin Oncol*. 2012;30(35):4344–4351. doi:10.1200/JCO.2012.43.8085
8. James RD, Glynne-Jones R, Meadows HM, et al. Mitomycin or cisplatin chemoradiation with or without maintenance chemotherapy for treatment of squamous-cell carcinoma of the anus (ACT II): a randomised, phase 3, open-label, 2 × 2 factorial trial. *Lancet Oncol*. 2013;14(6):516–524. doi:10.1016/S1470-2045(13)70086-X
9. Northover J, Glynne-Jones R, Sebag-Montefiore D, et al. Chemoradiation for the treatment of epidermoid anal cancer: 13-year follow-up of the first randomised UKCCCR Anal Cancer Trial (ACT I). *Br J Cancer*. 2010;102(7):1123–1128. doi:10.1038/sj.bjc.6605605

10. Yan L, Deng W, Guan L, Xu H. Nomogram forecasting 3-, 5-, and 8-year overall survival and cancer-specific survival of gingival squamous cell carcinoma. *Cancer Med*. 2020;9(21):8266–8274. doi:10.1002/cam4.3436
11. Balachandran VP, Gonen M, Smith JJ, DeMatteo RP. Nomograms in oncology: more than meets the eye. *Lancet Oncol*. 2015;16(4):e173–80. doi:10.1016/S1470-2045(14)71116-7
12. Ye L, Hu C, Wang C, Yu W, Liu F, Chen Z. Nomogram for predicting the overall survival and cancer-specific survival of patients with extremity liposarcoma: a population-based study. *BMC Cancer*. 2020;20(1):889. doi:10.1186/s12885-020-07396-x
13. Tsikitis VL, Lu KC, Kim JS, Billingsley KG, Thomas CR, Herzig DO. Nomogram for predicting overall survival and salvage abdominoperineal resection for patients with anal cancer. *Dis Colon Rectum*. 2016;59(1):1–7. doi:10.1097/DCR.0000000000000507
14. Liang W, Zhang L, Jiang G, et al. Development and validation of a nomogram for predicting survival in patients with resected non-small-cell lung cancer. *J Clin Oncol*. 2015;33(8):861–869. doi:10.1200/JCO.2014.56.6661
15. Pan JJ, Ng WT, Zong JF, et al. Prognostic nomogram for refining the prognostication of the proposed 8th edition of the AJCC/UICC staging system for nasopharyngeal cancer in the era of intensity-modulated radiotherapy. *Cancer*. 2016;122(21):3307–3315. doi:10.1002/encr.30198
16. Xu C, Chen YP, Liu X, et al. Socioeconomic factors and survival in patients with non-metastatic head and neck squamous cell carcinoma. *Cancer Sci*. 2017;108(6):1253–1262. doi:10.1111/cas.13250
17. Mao W, Ma B, Wang K, et al. Sarcopenia predicts prognosis of bladder cancer patients after radical cystectomy: a study based on the Chinese population. *Clin Transl Med*. 2020;10(2):e105. doi:10.1002/ctm2.105
18. Mao W, Fu Z, Wang K, Wu J, Xu B, Chen M. Prognostic nomogram for patients with lung metastatic renal cell carcinoma: a SEER-based study. *Ann Palliat Med*. 2021;10(3):2791–2804. doi:10.21037/apm-20-1488
19. Wu J, Chen S, Wu X, et al. Trends of incidence and prognosis of upper tract urothelial carcinoma. *Bosn J Basic Med Sci*. 2021;21(5):607–619. doi:10.17305/bjbm.2020.5345
20. Van Calster B, Wynants L, Verbeek JFM, et al. Reporting and interpreting decision curve analysis: a guide for investigators. *Eur Urol*. 2018;74(6):796–804. doi:10.1016/j.eururo.2018.08.038
21. Meulendijks D, Tomaso NB, Dewit L, et al. HPV-negative squamous cell carcinoma of the anal canal is unresponsive to standard treatment and frequently carries disruptive mutations in TP53. *Br J Cancer*. 2015;112(8):1358–1366. doi:10.1038/bjc.2015.20
22. Wang CJ, Sparano J, Palefsky JM. Human immunodeficiency virus/AIDS, human papillomavirus, and anal cancer. *Surg Oncol Clin N Am*. 2017;26(1):17–31. doi:10.1016/j.soc.2016.07.010
23. Beachler DC, Kreimer AR, Schiffman M, et al. Multisite HPV16/18 vaccine efficacy against cervical, anal, and oral HPV infection. *J Natl Cancer Inst*. 2016;108(1):djv302. doi:10.1093/jnci/djv302
24. Amini A, Jones BL, Ghosh D, Scheffter TE, Goodman KA. Impact of facility volume on outcomes in patients with squamous cell carcinoma of the anal canal: analysis of the National Cancer Data Base. *Cancer*. 2017;123(2):228–236. doi:10.1002/encr.30327
25. Valvo F, Ciurlia E, Avuzzi B, et al. Cancer of the anal region. *Crit Rev Oncol Hematol*. 2019;135:115–127. doi:10.1016/j.critrevonc.2018.12.007
26. Suradkar K, Pappou EE, Lee-Kong SA, Feingold DL, Kiran RP. Anal canal squamous cell cancer: are surgical alternatives to chemoradiation just as effective? *Int J Colorectal Dis*. 2018;33(2):181–187. doi:10.1007/s00384-017-2938-x
27. Aizer AA, Chen MH, McCarthy EP, et al. Marital status and survival in patients with cancer. *J Clin Oncol*. 2013;31(31):3869–3876. doi:10.1200/JCO.2013.49.6489
28. Yu C, Zhang Y. Development and validation of prognostic nomogram for young patients with gastric cancer. *Ann Transl Med*. 2019;7(22):641. doi:10.21037/atm.2019.10.77
29. Malakhov N, Kavi AM, Lee A, et al. Patterns of care and comparison of outcomes between primary anal squamous cell carcinoma and anal adenocarcinoma. *Dis Colon Rectum*. 2019;62(12):1448–1457. doi:10.1097/DCR.0000000000001506
30. Kaya S, Altun O, Altuntas YE, Yaprak G, Fehmi Kucuk H. Anal canal squamous cell cancer: surgical therapy, when? *Med Glas*. 2019;16:2.
31. de Meric de Bellefon M, Lemanski C, Castan F, et al. Long-term follow-up experience in anal canal cancer treated with Intensity-Modulated Radiation Therapy: clinical outcomes, patterns of relapse and predictors of failure. *Radiother Oncol*. 2020;144:141–147. doi:10.1016/j.radonc.2019.11.016
32. Glynne-Jones R, Rao S. Treatment of the primary tumor in anal canal cancers. *Surg Oncol Clin N Am*. 2017;26(1):73–90. doi:10.1016/j.soc.2016.07.003
33. Iasonos A, Schrag D, Raj GV, Panageas KS. How to build and interpret a nomogram for cancer prognosis. *J Clin Oncol*. 2008;26(8):1364–1370. doi:10.1200/JCO.2007.12.9791
34. Wang X, Mao M, He Z, et al. Development and validation of a prognostic nomogram in AFP-negative hepatocellular carcinoma. *Int J Biol Sci*. 2019;15(1):221–228. doi:10.7150/ijbs.28720

## International Journal of General Medicine

### Publish your work in this journal

The International Journal of General Medicine is an international, peer-reviewed open-access journal that focuses on general and internal medicine, pathogenesis, epidemiology, diagnosis, monitoring and treatment protocols. The journal is characterized by the rapid reporting of reviews, original research and clinical studies

Submit your manuscript here: <https://www.dovepress.com/international-journal-of-general-medicine-journal>

across all disease areas. The manuscript management system is completely online and includes a very quick and fair peer-review system, which is all easy to use. Visit <http://www.dovepress.com/testimonials.php> to read real quotes from published authors.