

Quality of life in relation to the traffic pollution indicators NO₂ and NO_x: results from the Swedish GA²LEN survey

Johan Nilsson Sommar,¹ Alexandra Ek,² Roelinde Middelveld,^{3,4} Anders Bjerg,⁵ Sven-Erik Dahlén,² Christer Janson,⁶ Bertil Forsberg¹

To cite: Sommar JN, Ek A, Middelveld R, *et al.* Quality of life in relation to the traffic pollution indicators NO₂ and NO_x: results from the Swedish GA²LEN survey. *BMJ Open Res* 2014;**1**: e000039. doi:10.1136/bmjresp-2014-000039

Preliminary results from this study has been presented at the Environmental Health Conference of ISEE, ISES and ISIAQ in Basel, Switzerland 19–23 August 2013 and at the ERS 2013 Annual Congress in Barcelona 7–11 September 2013.⁵⁰

Received 4 April 2014
Revised 23 June 2014
Accepted 25 June 2014



CrossMark

For numbered affiliations see end of article.

Correspondence to

Dr Johan Nilsson Sommar;
johan.n.sommar@envmed.
umu.se

ABSTRACT

Background: Asthma is a chronic disease that may affect daily activities and quality of life. Asthmatics have higher incidence of chronic rhinosinusitis (CRS) and asthma is associated with sinonasal inflammation and nasal symptoms, that all impair quality of life. Worsening of asthma has been found associated with levels of nitrogen dioxide as traffic indicator.

Aims: The aim of the study was to evaluate the impact of traffic pollution indicated by nitrogen oxides (NO₂ and NO_x) on quality of life in asthmatic persons, individuals with CRS and controls.

Methods: Within the Swedish Ga²len (Global Allergy and Asthma European Network), 605 asthmatics with and without CRS, 110 individuals with CRS only and 226 controls from four cities were surveyed. The mini Asthma Quality of life Questionnaire (mAQLQ) and the Euro Quality of Life (EQ-5D) health questionnaire were used. Air pollution concentrations at the home address were modelled using dispersion models.

Results: Levels of NO₂ (geometric mean 10.1 µg/m³ (95% CI 9.80 to 10.5) and NO_x (12.1 µg/m³, 11.7 to 12.6) were similar among conditions (controls, asthmatics, individuals with CRS and asthmatics with CRS). The mAQLQ overall score was not found associated with levels of NO₂ or NO_x, with or without adjustments, and neither was scores within each of the four domains of mAQLQ: symptoms, activity limitations, emotional functions and effects of environmental stimuli. The mean EQ-5D index value, based on the five dimensions mobility, self-care, usual activities, pain/discomfort and anxiety depression, was also found unrelated to NO₂ and NO_x.

Conclusions: At moderate exposure levels traffic pollution appears not to affect quality of life.

INTRODUCTION

Quality of life is a measure of the general well-being, which has previously only been assessed in relation to the concentrations of traffic air pollution on an ecological level. Using a health-related quality of life measure

in eight domains, an association was found between vitality and nitrogen oxides (NO_x), however, not within the remaining domains.¹ On the individual level, a recent study found poorer physical health-related quality of life among women living in areas with high traffic density compared with women living in areas with moderate or low vehicle traffic density.²

Traffic pollutants have been found associated with the development of asthma^{3–6} and chronic rhinosinusitis (CRS),^{7–8} and asthma and CRS substantially affect quality of life (asthma^{9–10}; CRS^{10–13}). Since severity of asthma has been found related to traffic pollutants,^{14–15} it can be suggested that traffic pollutants may also affect quality of life among asthmatics and, due to the comorbidity^{16–18} and the comorbid clinical presentations^{19–20} between asthma and CRS, also among individuals with CRS.

There are many symptoms of CRS that affect quality of life, including chronic nasal congestion, facial pressure and pain, headache, hyposmia and anosmia,¹³ and the impairment of quality of life has been found as an important predictor of CRS severity.²¹ In a recent study on the same individuals as in this study, quality of life among those with asthma and CRS was found to be lower than among those with only asthma.¹⁰

There is a considerable variation in air pollution within and between the cities. The ESCAPE study (European Study of Cohorts for Air Pollution Effects) studied variation of nitrogen oxides (NO₂ and NO_x) at 36 study areas using on average 41 monitoring sites per study area and found that the range of NO₂ was on average 54 µg/m³.²² The corresponding average among the study areas in northern Europe was 38.2 µg/m³. The largest part of NO₂ variability was found within the study areas (60% of the total variability compared

with 40% between study areas). Corresponding fractions for NO_x were 70% and 30%, respectively. Due to this inter-study and intrastudy area variability of exposure within the population epidemiological studies can be employed to assess health effects and perceived health.

The aim of the study was to evaluate the impact of traffic pollution (studied as NO₂ and NO_x) on quality of life in asthmatic subjects, individuals with CRS and controls.

METHODS

Study population

The study is based on the Ga²len survey which was conducted in 19 European centres aiming at studying asthma, rhinitis and CRS.²³ The Swedish part of Ga²len consists of four centres situated in Gothenburg, Stockholm, Uppsala and Umeå. Within these Swedish centres, a random population-based sample among those aged 16–75 years received the postal survey in the year 2008 and 27 866 individuals responded (about 60%). Upto three reminders were mailed. Among the respondents, randomly selected subgroups consisting of individuals with asthma, CRS, both asthma and CRS and those with neither asthma nor CRS, were invited to a clinical follow-up in 2009–2010. At the follow-up, 1329 individuals participated of which 605 were defined as asthmatics, 240 were defined as having CRS, 226 were defined as having neither asthma nor CRS and 388 were excluded since they did not fulfil the criteria to be included in either of the subgroups.

The study was approved by the Regional Ethical Review Board in Stockholm, Sweden (Dnr 2008/1100-31/4), and the collected personal data were treated according to the Swedish personal data act.

Defining asthma, CRS and controls

The criteria for asthma were to have self-reported asthma and either asthma symptoms (wheezing, and/or attack of shortness of breath and/or awakening at night with breathlessness in the previous 12 months) or taking asthma treatment (taking any asthma medication during the last 12 months).

CRS was defined according to the European position paper on rhinosinusitis and nasal polyps (EP₃OS) criteria,²⁴ that is, the presence of at least two of the following symptoms for at least 12 weeks in the last year: (1) nasal blockage, (2) nasal discharge, (3) facial pain or pressure, (4) reduction in sense of smell with at least one of the symptoms being nasal blockage or nasal discharge.

The control group consisted of those who were not classified as having either asthma or CRS at either the first postal survey or the follow-up visit and additionally did not report attacks of shortness of breath, wheezing, use of asthma medicines or CRS symptoms.

Data collection

All individuals completed the Euro Quality of life (EQ-5D) health questionnaire, which assesses quality of

life in the five dimensions mobility, self-care, usual activities, pain/discomfort and anxiety/depression. A summary index comprising all dimensions was calculated utilising the UK time trade-off (TTO) value set.²⁵

Individuals who fulfilled the criterion for asthma completed the Juniper Mini Asthma Quality of life Questionnaire (mAQLQ),²⁶ aiming to assess the impact of asthma on quality of life. The mAQLQ is divided to assess the impact of asthma on quality of life in the four domains: symptoms; activity limitations; emotional functions and effects of environmental stimuli. Each of these domains score 1–7, where 1 indicates maximal impairment and 7 no impairment. The overall impact of asthma on quality of life was evaluated as the mean of the scores in each domain.

At the clinical visit the following set of variables were also collected: lung function, skin prick test, exhaled nitric oxide, odour identification and peak nasal inspiratory flow.

Lung function assessment was performed using the EasyOne Spirometer (ndd Medizintechnik AG) according to the American Thoracic Society (ATS) spirometry standards.²⁶ Forced vital capacity (FVC) and forced expiratory volume in 1 s (FEV₁) were registered before and at least 15 min after bronchodilation (inhalation of 200 µg salbutamol). The European Community for Steel and Coal equations were used as reference values.²⁷

Skin prick test (SPT) was performed on the inside of the forearm using the following set of allergens: timothy grass, mixed grass, Dermatophagoides pteronyssinus, cat, birch, blattella, olive, *Alternaria*, dog, *Artemisia*, Parietaria, Dermatophagoides farinae, histamine (positive control) and diluent (histamine control). A positive SPT was defined as a weal at least 3 mm at the widest diameter. Atopy was defined as at least one positive SPT finding.

Fraction of exhaled NO (FeNO) was assessed using NIOX MINO (NIOX MINO; Aerocrine, Stockholm, Sweden) according to recommendations from the ATS and European Respiratory Society.²⁸

Smell was assessed using Sniffin'Sticks test kit (Bughart Messtechnik, Wedel, Germany) includes 12 pens. During the test each pen was placed 2 cm in front of both nostrils, thereafter the participant was asked to sniff for 3–4 s. The outcome was registered on a four-alternative card, and the result was finally presented as the number of correct identifications.

Peak Nasal Inspiratory Flow (PNIF) was carried out using the PNIF meter (Clement Clarke International, Essex, UK). The highest of three maximal inspiration flows was recorded.

Measurements of air pollution

The concentrations of nitric oxides NO₂ and NO_x were modelled within 50 m² grids, using validated meteorological dispersion models and local emission data, in particular traffic flow data for streets and emission factors for different types of vehicles. The Airviro dispersion model (<http://www.airviro.smhi.se>) was used within the study

cites Umeå, Uppsala, and Stockholm, and the dispersion model Enviman (<http://www.environmental-expert.com/software/enviman-software-8140>) within Gothenburg. A modelled yearly average for each participant was obtained using the coordinates of the participant's home address.

Statistical methods

Quality-of-life scores were presented as quartiles and results of remaining variables as mean or geometric mean with 95% CI. Kruskal-Wallis rank sum test was used to test if mAQLQ scores differed between conditions (asthma, CRS, both asthma and CRS and neither CRS nor asthma) and pairwise comparisons were conducted using Wilcoxon signed-rank test. To test if NO₂ and NO_x levels differed between conditions analysis of variance (ANOVA) was used. χ^2 tests or ANOVA were used to test if potential confounders differed between conditions. The association between quality-of-life outcomes and concentrations of nitrogen oxides (NO₂ or NO_x) was evaluated using Spearman's correlation coefficient (r_s). Adjustment for covariates was obtained by calculating partial correlation coefficients. Analyses of mAQLQ include only asthmatics whereas analyses of EQ-5D include all study participants. All analyses were carried out using R V.2.14.0,²⁹ and p-values less than 0.05 were considered statistically significant.

RESULTS

In total 941 individuals were included in the study population: 123 from Gothenburg, 263 from Stockholm, 268 from Umeå, 287 from Uppsala. The mean age in the study population was 45 years ranging between 17 and 76, and 56% were women (table 1).

The geometric mean of NO₂ was 10.1 µg/m³ with (95% CI 9.80 to 10.5) and range 1.04–41.3, and NO_x 12.1 µg/m³ with (95% CI 11.7 to 12.6) and range 3.48–64.0. NO₂ and NO_x were related to the city of residence ($p < 0.001$). City-specific concentrations (geometric mean and 95% CI) of NO_x within Gothenburg, Stockholm, Umeå and Uppsala were 18.9 (17.4 to 20.5), 14.7 (13.9 to 15.5), 14.8 (13.9 to 15.6) and 7.1 (6.8 to 7.5) µg/m³, respectively. The exposure to traffic pollution (levels of NO₂ and NO_x) did not differ between conditions (controls, asthmatics, individuals with CRS and asthmatics with CRS) (table 1). Differences between conditions were, however, found for gender, body mass index (BMI), skin prick test, FeNO, PNIF, allergic rhinitis, use of inhaled asthma medicine and odour identification, but not for age and smoking habits (table 1).

Considering the individuals with asthma, the median overall mAQLQ was 6.1 with 1st and 3rd quartiles 5.3 and 6.6, respectively (figure 1). The score was lower among those who also had CRS, median 5.6 (with 1st and 3rd quartiles 4.4 and 6.5, respectively) compared with 6.2 (5.5–6.7), indicating a lower quality of life among individuals with asthma and CRS. Asthmatics

with CRS also had a lower score among the four different domains of symptoms, activity limitations, emotional functions and effects of environmental stimuli (data not shown).

Among all individuals in the study population the mean EQ-5D index value differed between conditions except for the two groups with either asthma or CRS who had similar values. Quartiles of EQ-5D index values among controls, asthmatics, individuals with CRS and asthmatics with CRS were 1.0 (0.85–1.0), 0.85 (0.80–1.0), 0.85 (0.80–1.0) and 0.80 (0.73–1.0), respectively. A value of one corresponds to the best possible quality of life. Within the different dimensions of EQ-5D 90%, 98%, 92%, 59% and 76% of respondents reported no impairment of mobility, self-care, usual activities (unable to perform usual activities compared with no or some problems), pain/discomfort and anxiety/depression, respectively.

The mAQLQ overall score was found associated with age, BMI, FEV₁, PNIF, smell and smoking, with Spearman's correlation coefficients (r_s) –0.22, –0.17, 0.20, 0.12, 0.11 and –0.13, respectively, but not with FeNO ($r_s=0.08$). The mean EQ-5D index value was found associated with age, BMI, PNIF and smoking, with $r_s=-0.17$, –0.20, 0.08 and –0.17, respectively, but not with FEV₁, FeNO and smell ($r_s=0.010$, 0.11 and 0.08, respectively).

The mAQLQ overall score was not found associated with levels of NO₂ or NO_x, with or without adjustments, and neither were the scores within each of the four domains of mAQLQ: symptoms, activity limitations, emotional functions and effects of environmental stimuli (figures 2 and 3, data not shown for NO₂). Additionally, including controls, the mean EQ-5D index value, based on the five dimensions mobility, self-care, usual activities, pain/discomfort and anxiety/depression, was also found unrelated to NO₂ and NO_x (figure 4, data not shown for NO₂). Stratification by dimension or condition did not reveal any differences in NO₂ or NO_x related effects (data not shown separately for conditions).

DISCUSSION

This is the first study that on an individual level assesses a possible association between exposure to traffic pollution at home (as indicated by NO₂ and NO_x) and quality-of-life measurements (within the general population and also specifically capturing quality of life among asthmatics and individuals with CRS). The findings suggest no association between levels of traffic pollution and quality of life at these levels of exposure.

A strength of the study is that concentrations of NO₂ and NO_x were modelled using a high spatial resolution (50×50 m grids) in dispersion models considering geo-coded emission data and local meteorology. Owing to the spatial variability of NO₂ within urban areas, there could be significant misclassification of personal exposure for individuals who spend much time in places much different than their neighbourhood.^{30–32} We did not, however,

Table 1 Characteristics of the 941 study participants

	Control	CRS only	Asthma only	Both asthma and CRS	p Value for difference between conditions
Subjects (number)	226	110	475	130	
Female (%)	51	46	60*§§	57	0.02
Age (years) mean (95% CI)	47.5 (45.5 to 49.5)	45.4 (42.5 to 48.3)	44.7 (43.3 to 46.0)	44.6 (42.1 to 47.2)	0.10
BMI (kg/m ²) mean (95% CI)	25.0 (24.5 to 25.5)	26.4 (25.4 to 27.4)	26.6*** (26.1 to 27.0)	27.1*** (26.3 to 28.0)	<0.001
Smoking					
Never smoked (%)	57	53	54	49	0.35
Ex-smokers (%)	34	31	36	37	
Current smokers (%)	10	16	9	14	
Skin prick test positivity (%)	31	32	71***§§§	64***§§§	<0.001
Allergic rhinitis (%)	23	41***	69***§§§	72***§§§	<0.001
Inhaled asthma medicines (%)	0	11***	75***§§§	82***§§§	<0.001
FeNO (ppb) geometric mean (95% CI)	15.6 (14.3 to 16.9)	17.0 (15.4 to 18.7)	19.3*** (18.2 to 20.5)	18.8 (16.6 to 21.3)	<0.001
Smell test score mean (95% CI)	9.8 (9.6 to 10.0)	9.1** (8.7 to 9.5)	9.9§§§ (9.8 to 10.1)	9.3*## (9.0 to 9.7)	<0.001
PNIF (L/min) geometric mean (95% CI)	117 (111 to 122)	100** (91 to 110)	115§§ (111 to 119)	111 (103 to 118)	<0.001
NO _x (µg/m ³) geometric mean (95% CI)	11.7 (11 to 12.6)	11.3 (10.1 to 12.7)	12.5 (11.8 to 13.2)	12.3 (11.1 to 13.7)	0.36
NO ₂ (µg/m ³) geometric mean (95% CI)	10 (9.4 to 10.7)	9.4 (8.4 to 10.4)	10.4 (9.8 to 10.9)	10.3 (9.3 to 11.3)	0.40

*p<0.05, **p<0.01, ***p<0.001 compared to controls; §p<0.05, §§p<0.01, §§§p<0.001 compared to CRS; ##p<0.01 compared to asthma. CRS, chronic rhinosinusitis; FeNO, Fraction of exhaled NO; PNIF, Peak Nasal Inspiratory Flow.

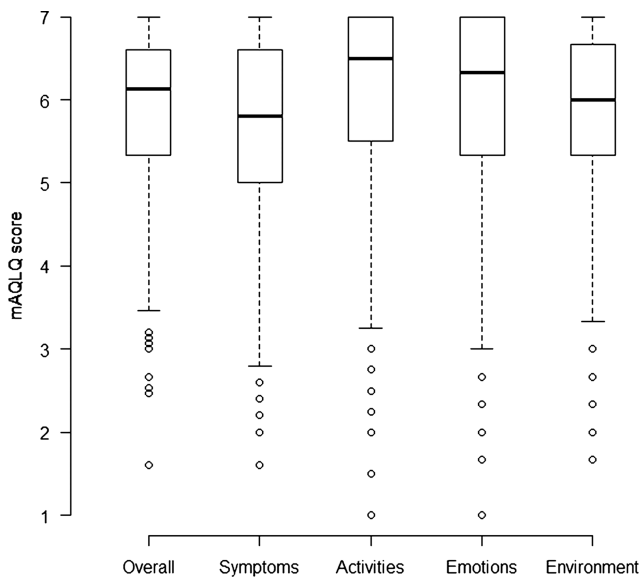


Figure 1 Box plot of mAQLQ scores (among asthmatics with and without chronic rhinosinusitis (CRS)).

use personal carry on diffusive samplers, however exposure levels of NO_2 and NO_x at the home address have been shown to correlate closely with these assessments of cumulative daily exposure.³³ Another benefit with the design of the study is that we have, apart from assessing the association between traffic pollution and quality of life among controls, specifically targeted asthmatics and individuals with CRS who may be more susceptible to traffic pollution than individuals in the general population. Additionally, when estimating the association between traffic pollution and quality of life no

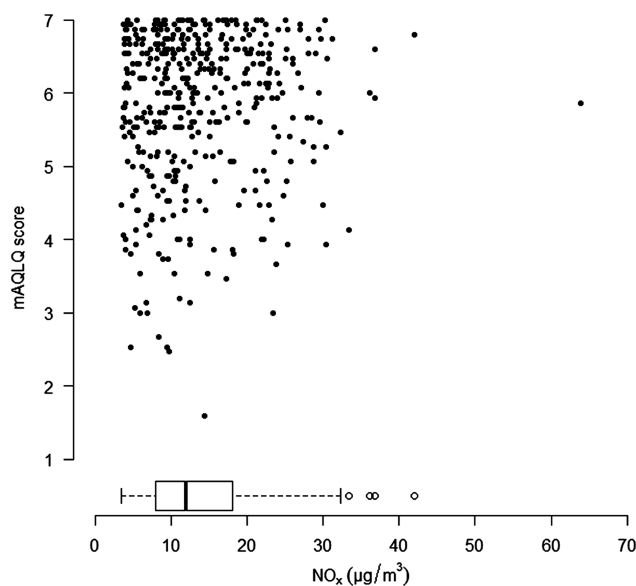


Figure 2 Overall mAQLQ score (among asthmatics with and without chronic rhinosinusitis (CRS)) in relation to NO_x concentrations. The distribution of NO_x was indicated using a box plot.

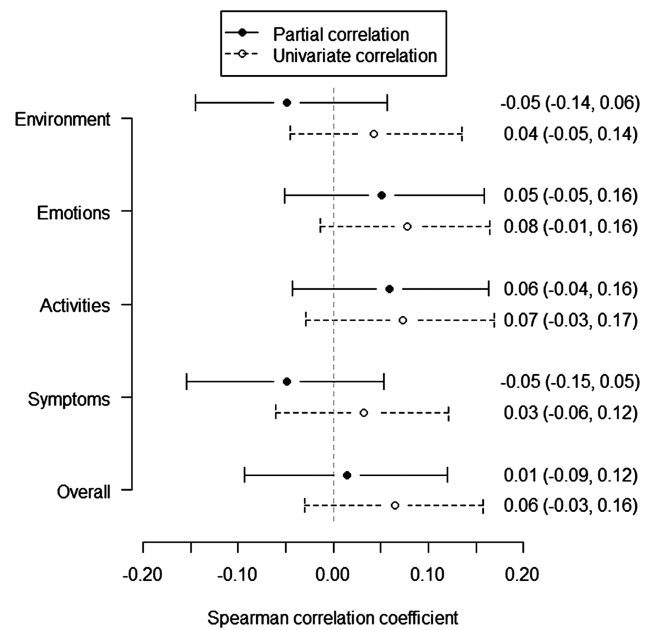


Figure 3 Univariate and partial correlations between mAQLQ and NO_x . The partial correlation coefficient was estimated when taking into consideration centre (Gothenburg, Stockholm, Umeå and Uppsala), chronic rhinosinusitis (CRS) and the covariates in table 1. Estimates were given by Spearman's correlation coefficients with 95% CIs.

distributional assumption was made and no parametric assumption was made with regard to the shape of the association. Our power analyses, however, assuming a

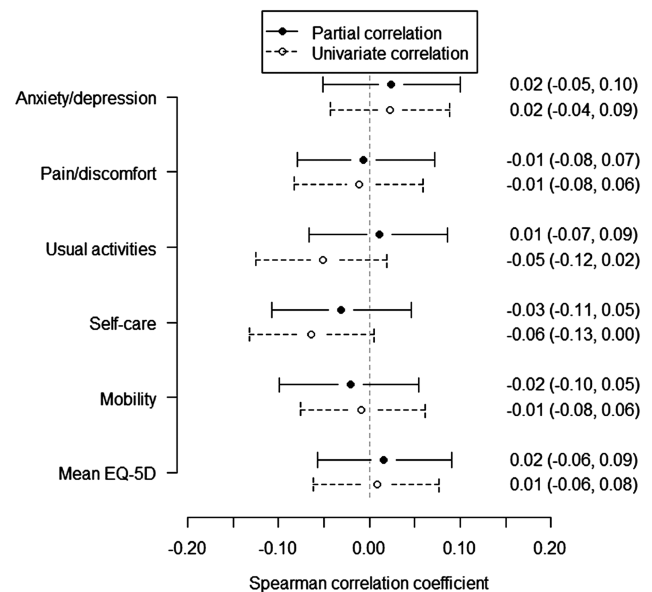


Figure 4 Univariate and partial correlations between EQ-5D and NO_x . The partial correlation coefficient was estimated when taking into consideration condition (controls, asthmatics, individuals with chronic rhinosinusitis (CRS) and asthmatics with CRS), centre (Gothenburg, Stockholm, Umeå and Uppsala) and the covariates in table 1. Estimates were given by Spearman's correlation coefficients with 95% CIs.

linear relation between quality of life and nitric oxides concentrations, showed that partial correlations above 0.15 and 0.10 were expected to be found statistically significant for mAQLQ and EQ-5D, respectively, when requiring 80% power of each statistical test. A benefit with regards to representativeness is the random sampling of individuals from the population, obtaining individuals from 17 to 76 years of age, however, no information was available for non-respondents and therefore a difference, in terms of the quality-of-life measures, exposure and confounders, between source population and participants cannot be excluded. A recent study of the selection bias in a population survey within partly the same population as in the current study showed that participants were more likely to be women, have university education, high income, be married and of Nordic origin compared with non-participants.³⁴ Compared with the entire Swedish Ga²LEN Survey,³⁵ participants (controls and asthmatics) in the current clinical follow-up study were about the same age, had the same gender distribution and had the same prevalence of smoking. There is also a possibility of unmeasured confounding related to the type of residential area, where the most important could be confounding due to susceptibility. Individuals who are more susceptible to air pollution or noise, for instance, suffer more symptoms or are more easily annoyed, may choose to live in an area with lower exposure. A variation in noise sensitivity may, of course, exist also among the controls and result in similar avoidance patterns, creating bias.

Among controls, air pollution may affect quality of life due to, for example, its association with annoyance,³⁶ cancer³⁷ and cardiovascular and respiratory morbidity,^{38–39} however, these effects may be greater among individuals with pre-existing respiratory diseases.

'How controllable an individual's asthma is' has been found correlated with the quality of life.⁹ According to clinical guidelines the controllability of asthma reflects the chronic and acute effects, and includes daytime and nighttime symptoms, the need for rescue treatment, exacerbations in the last year and lung function.^{40–41} Predictors of asthma control have been found to be different among corticosteroids users and non-corticosteroids users, where the predictors among corticosteroids users were chronic cough, phlegm, and female sex, and among non-corticosteroids users were high total immunoglobulin E (IgE) and sensitisation to moulds.^{42–43} Another study in addition found overweight as a predictor among corticosteroids users.⁴⁴

Studies have also investigated long-term exposure to air pollution as a predictor of asthma control.^{15–45–47} In a study including five cities in France an association was found between controlled/uncontrolled asthma and concentrations of ozone and particulate matter with diameter of 10 µm or less (PM10), OR=1.69 (95% CI 1.22 to 2.34) and 1.35 (95% CI 1.13 to 1.64) for a 10 µg/m³ increase, respectively.¹⁵ No association was, however, found for NO₂, OR 0.99 (95% CI 0.71 to 1.40),

which agrees with current findings of no change in quality of life with NO₂. Levels of NO₂ were, however, considerably higher compared with the current study; mean concentration was 32.1 µg/m³ compared with geometric mean 10.1 µg/m³. According to human exposure studies, the effects of NO₂ occur only at rather high concentrations, but the evidence among asthmatics is more limited (WHO Revihaap technical report 2013). The literature does not, however, support a threshold of exposure for which no adverse health effects occur, and short-term and long-term epidemiological studies have found associations with adverse health effects at concentrations at or below the current European Union limit value (40 µg/m³ of NO₂). These findings are also in agreement with another French study reporting an association with ozone (OR 2.22 (95% CI 1.61 to 3.07) for a 36-day increase, equivalent to the interquartile range, in ozone-days with 8 h mean ozone above 110 µg/m³), whereas no association was found for NO₂.⁴⁵ A study in California observed a two-fold increase in poorly controlled asthma among asthmatic adults when comparing the highest with the lowest quintile of traffic density.⁴⁶ In another study in California the odds of experiencing daily or weekly asthma symptoms increased with increasing ozone, PM10 and PM2.5 (OR 1.23 (95% CI 0.94 to 1.60), 1.29 (95% CI 1.05 to 1.57), and 1.82 (95% CI 1.11 to 2.98), per 10 µg/m³, respectively).⁴⁷ Exhaust particles, including black carbon, may be of greater importance for aggravation of asthma. No study on the severity of CRS in relation to traffic pollution was found. Besides the non-adequately controlled symptomatic effects on quality of life there may also be important restrictions on social life among individuals with severe asthma. Further studies may also consider acute associations between traffic pollution and quality of life, where, for instance, associations have been found with lung function among asthmatics.^{48–49}

A Norwegian study of health-related quality of life classified electoral districts into three categories according to traffic density.² Using this rough grouping, high vehicle traffic density was reported to be associated with reduced physical health-related quality of life among women, but not among men. The association in women remained after adjustment for respiratory symptoms. A study from Japan used a 1-month mean value for NO_x from the closest monitoring station to group participants into four exposure categories.¹ With this crude indicator there was a significant trend with lower health-related quality of life in the domain of vitality within cities with higher exposure but not within the domains of physical functioning, role-physical, bodily pain, general health perception, social functioning, role-emotion, or mental health.

CONCLUSIONS

Within these exposure levels, traffic pollution appears not to affect quality of life among controls, asthmatics,

individuals with CRS or asthmatics with CRS. This could perhaps be explained by selection bias related to susceptibility (avoidance), moderate exposure levels or confounders related to the type of residential area.

Author affiliations

¹Occupational and Environmental Medicine, Department of Public Health and Clinical Medicine, Umeå University, Umeå, Sweden

²Experimental Asthma and Allergy Research Unit, Institute of Environmental Medicine, Karolinska Institutet, Stockholm, Sweden

³The Centre for Allergy Research, Karolinska Institutet, Stockholm, Sweden

⁴The Institute of Environmental Medicine, Karolinska Institutet, Stockholm, Sweden

⁵Department of Internal Medicine and Clinical Nutrition, Sahlgrenska Academy, Krefting Research Centre, University of Gothenburg, Göteborg, Sweden

⁶Department of Medical Sciences: Respiratory Medicine and Allergology, Uppsala University, Uppsala, Sweden

Contributors S-ED, AE, BF, CJ, RM, AB were involved in design of health study and data acquisition. BF and JNS were responsible for air pollution exposure assessment. JNS was involved in statistical analysis and drafting the manuscript. All authors were involved in revision and final approval of the manuscript.

Funding The study was founded by the Swedish heart and lung foundation and the Västerbotten County Council (ALF).

Competing interests None.

Ethics approval The study was approved by the Regional Ethical Review Board in Stockholm, Sweden (Dnr 2008/1100-31/4).

Provenance and peer review Not commissioned; externally peer reviewed.

Data sharing statement No additional data are available.

Open Access This is an Open Access article distributed in accordance with the Creative Commons Attribution Non Commercial (CC BY-NC 4.0) license, which permits others to distribute, remix, adapt, build upon this work non-commercially, and license their derivative works on different terms, provided the original work is properly cited and the use is non-commercial. See: <http://creativecommons.org/licenses/by-nc/4.0/>

REFERENCES

1. Yamazaki S, Nitta H, Murakami Y, *et al.* Association between ambient air pollution and health-related quality of life in Japan: ecological study. *Int J Environ Health Res* 2005;15:383–91.
2. Gundersen H, Mageroy N, Moen BE, *et al.* Traffic density in area of residence is associated with health-related quality of life in women, the community-based Hordaland health study. *Arch Environ Occup Health* 2013;68:153–60.
3. Anderson HR, Favara G, Atkinson RW. Long-term exposure to air pollution and the incidence of asthma: meta-analysis of cohort studies. *Air Qual Atmos Health* 2013;6:47–56.
4. Carlsten C, Dybuncio A, Becker A, *et al.* Traffic-related air pollution and incident asthma in a high-risk birth cohort. *Occup Environ Med* 2011;68:291–5.
5. Gasana J, Dillikar D, Mendy A, *et al.* Motor vehicle air pollution and asthma in children: a meta-analysis. *Environ Res* 2012;117:36–45.
6. Lindgren A, Bjork J, Strohm E, *et al.* Adult asthma and traffic exposure at residential address, workplace address, and self-reported daily time outdoor in traffic: a two-stage case-control study. *BMC Public Health* 2010;10:13.
7. Bhattacharyya N. Air quality influences the prevalence of hay fever and sinusitis. *Laryngoscope* 2009;119:429–33.
8. Wolf C. Urban air pollution and health: an ecological study of chronic rhinosinusitis in Cologne, Germany. *Health Place* 2002;8:129–39.
9. Bousquet J, Knani J, Dhivert H, *et al.* Quality of life in asthma. I. Internal consistency and validity of the SF-36 questionnaire. *Am J Respir Crit Care Med* 1994;149(2 Pt 1):371–5.
10. Ek A, Middelvelde R, Bertilsson H, *et al.* Chronic rhinosinusitis in asthma is a negative predictor of quality of life: results from the Swedish GA2LEN survey. *Allergy* 2013;68:1314–21.
11. Birch DS, Saleh HA, Wodehouse T, *et al.* Assessing the quality of life for patients with chronic rhinosinusitis using the “Rhinosinusitis Disability Index”. *Rhinology* 2001;39:191–6.
12. Marambaia PP, Lima MG, Santos KP, *et al.* Evaluation of the quality of life of patients with chronic rhinosinusitis by means of the SNOT-22 questionnaire. *Braz J Otorhinolaryngol* 2013;79:54–8.
13. Rudmik L, Smith TL. Quality of life in patients with chronic rhinosinusitis. *Curr Allergy Asthma Rep* 2011;11:247–52.
14. Andersen ZJ, Bonnelykke K, Hvidberg M, *et al.* Long-term exposure to air pollution and asthma hospitalisations in older adults: a cohort study. *Thorax* 2012;67:6–11.
15. Jacquemin B, Kauffmann F, Pin I, *et al.* Air pollution and asthma control in the Epidemiological study on the Genetics and Environment of Asthma. *J Epidemiol Commun Health* 2012;66:796–802.
16. Bachert C, Vignola AM, Gevaert P, *et al.* Allergic rhinitis, rhinosinusitis, and asthma: one airway disease. *Immunol Allergy Clin North Am* 2004;24:19–43.
17. Jarvis D, Newson R, Lotvall J, *et al.* Asthma in adults and its association with chronic rhinosinusitis: the GA2LEN survey in Europe. *Allergy* 2012;67:91–8.
18. Smart BA. Is rhinosinusitis a cause of asthma? *Clin Rev Allergy Immunol* 2006;30:153–64.
19. Lin DC, Chandra RK, Tan BK, *et al.* Association between severity of asthma and degree of chronic rhinosinusitis. *Am J Rhinol Allergy* 2011;25:205–8.
20. Pearlman AN, Chandra RK, Chang D, *et al.* Relationships between severity of chronic rhinosinusitis and nasal polyposis, asthma, and atopy. *Am J Rhinol Allergy* 2009;23:145–8.
21. Tahamiler R, Canakcioglu S, Ogreden S, *et al.* The accuracy of symptom-based definition of chronic rhinosinusitis. *Allergy* 2007;62:1029–32.
22. Cyrus J, Eeftens M, Heinrich J, *et al.* Variation of NO₂ and NO_x concentrations between and within 36 European study areas: Results from the ESCAPE study. *Atmos Environ* 2012;62:374–90.
23. Bousquet J, Burney PG, Zuberbier T, *et al.* GA(2)LEN (Global Allergy and Asthma European Network) addresses the allergy and asthma ‘epidemic’. *Allergy* 2009;64:969–77.
24. Fokkens WJ, Lund VJ, Mullol J, *et al.* European position paper on rhinosinusitis and nasal polyps 2012. *Rhinol Suppl* 2012;50:1–298.
25. Dolan P. Modeling valuations for EuroQol health states. *Med Care* 1997;35:1095–108.
26. American Thoracic Society. Standardization of Spirometry, 1994 Update. *Am J Respir Crit Care Med* 1995;152:1107–36.
27. Quanjer PH, Tammeling GJ, Cotes JE, *et al.* Lung volumes and forced ventilatory flows. Report Working Party Standardization of Lung Function Tests, European Community for Steel and Coal. Official Statement of the European Respiratory Society. *Eur Respir J Suppl* 1993;16:5–40.
28. American Thoracic Society; European Respiratory Society. ATS/ERS recommendations for standardized procedures for the online and offline measurement of exhaled lower respiratory nitric oxide and nasal nitric oxide, 2005. *Am J Respir Crit Care Med* 2005;171:912–30.
29. R Development Core Team. R: A language and environment for statistical computing. R Foundation for Statistical Computing, Vienna, Austria. ISBN 3-900051-07-0. 2010. <http://www.R-project.org>
30. Lebrecht E, Briggs D, van Reeuwijk H, *et al.* Small area variations in ambient NO₂ concentrations in four European areas. *Atmos Environ* 2000;34:177–85.
31. Lewne M, Cyrus J, Meliefste K, *et al.* Spatial variation in nitrogen dioxide in three European areas. *Sci Total Environ* 2004;332:217–30.
32. Monn C. Exposure assessment of air pollutants: a review on spatial heterogeneity and indoor/outdoor/personal exposure to suspended particulate matter, nitrogen dioxide and ozone. *Atmos Environ* 2001;35:1–32.
33. van Roosbroeck S, Wichmann J, Janssen NA, *et al.* Long-term personal exposure to traffic-related air pollution among school children, a validation study. *Sci Total Environ* 2006;368:565–73.
34. Strandhagen E, Berg C, Lissner L, *et al.* Selection bias in a population survey with registry linkage: potential effect on socioeconomic gradient in cardiovascular risk. *Eur J Epidemiol* 2010;25:163–72.
35. Sundbom F, Lindberg E, Bjerg A, *et al.* Asthma symptoms and nasal congestion as independent risk factors for insomnia in a general population: results from the GA(2)LEN survey. *Allergy* 2013;68:213–19.
36. Modig L, Forsberg B. Perceived annoyance and asthmatic symptoms in relation to vehicle exhaust levels outside home: a cross-sectional study. *Environ Health* 2007;6:29.



37. Raaschou-Nielsen O, Andersen ZJ, Beelen R, *et al.* Air pollution and lung cancer incidence in 17 European cohorts: prospective analyses from the European Study of Cohorts for Air Pollution Effects (ESCAPE). *Lancet Oncol* 2013;14:813–22.
38. Gotschi T, Heinrich J, Sunyer J, *et al.* Long-term effects of ambient air pollution on lung function: a review. *Epidemiology* 2008;19:690–701.
39. Shrey K, Suchit A, Deepika D, *et al.* Air pollutants: the key stages in the pathway towards the development of cardiovascular disorders. *Environ Toxicol Pharmacol* 2011;31:1–9.
40. National Heart Lung and Blood Institute. *Global initiative for asthma: global strategy for asthma management and prevention*. Rev. 2002. edn. Bethesda, MD: U.S. Department of Health and Human Services, Public Health Service, 2002.
41. National Asthma Education and Prevention Program (National Heart Lung and Blood Institute). Third Expert Panel on the Management of Asthma. *Guidelines for the diagnosis and management of asthma: full report 2007*. Bethesda, MD: U.S. Department of Health and Human Services, National Institutes of Health, National Heart, Lung, and Blood Institute, 2010.
42. Siroux V, Boudier A, Bousquet J, *et al.* Phenotypic determinants of uncontrolled asthma. *J Allergy Clin Immunol* 2009;124:681–7.e3.
43. de Marco R, Bugiani M, Cazzoletti L, *et al.* The control of asthma in Italy. A multicentre descriptive study on young adults with doctor diagnosed current asthma. *Allergy* 2003;58:221–8.
44. Cazzoletti L, Marcon A, Janson C, *et al.* Asthma control in Europe: a real-world evaluation based on an international population-based study. *J Allergy Clin Immunol* 2007;120:1360–7.
45. Rage E, Siroux V, Kunzli N, *et al.* Air pollution and asthma severity in adults. *Occup Environ Med* 2009;66:182–8.
46. Meng YY, Wilhelm M, Rull RP, *et al.* Traffic and outdoor air pollution levels near residences and poorly controlled asthma in adults. *Ann Allergy Asthma Immunol* 2007;98:455–63.
47. Meng YY, Rull RP, Wilhelm M, *et al.* Outdoor air pollution and uncontrolled asthma in the San Joaquin Valley, California. *J Epidemiol Community Health* 2010;64:142–7.
48. McCreanor J, Cullinan P, Nieuwenhuijsen MJ, *et al.* Respiratory effects of exposure to diesel traffic in persons with asthma. *N Engl J Med* 2007;357:2348–58.
49. Zhang JJ, McCreanor JE, Cullinan P, *et al.* Health effects of real-world exposure to diesel exhaust in persons with asthma. *Res Rep Health Eff Inst* 2009;5–109; discussion 11–23.
50. Forsberg B, Nilsson Sommar J, Ek A, *et al.* Quality of life in relation to the traffic indicators NO₂ and NO_x: Results from the Swedish GA2LEN survey. *Eur Respir J* 2013;42(Suppl 57):747s.