
Supplementary information

Cancer cells impair monocyte-mediated T cell stimulation to evade immunity

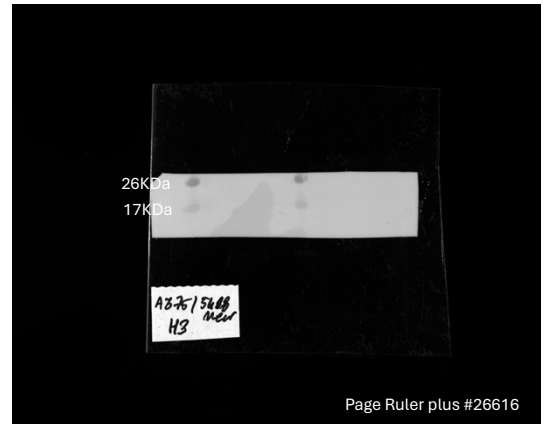
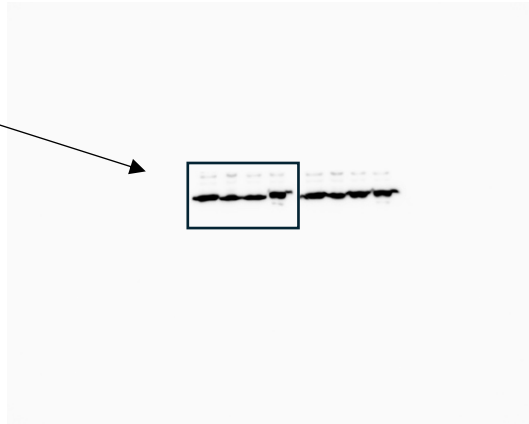
In the format provided by the
authors and unedited

UNCROPPED WESTERN BLOT IMAGES

1. A375 Melanoma BLOT: **Extended Data Fig. 5s**

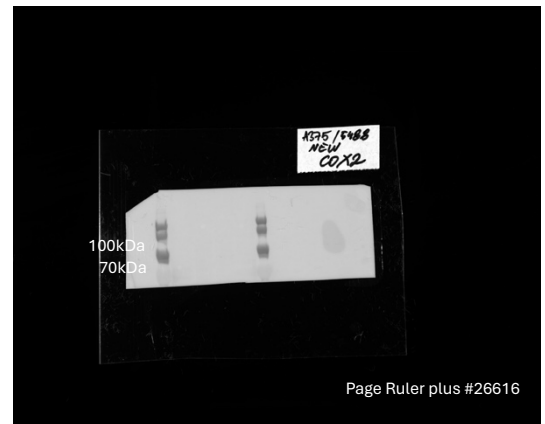
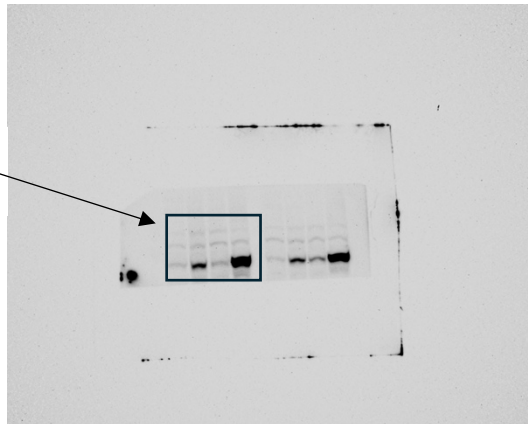
- HISTONE3 (18kDa)

Cropped area



- COX2 (74 kDa)

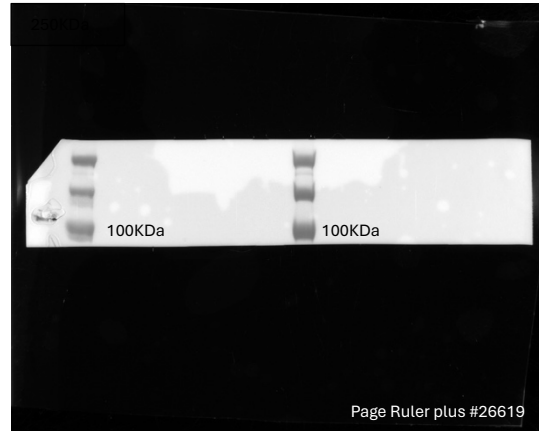
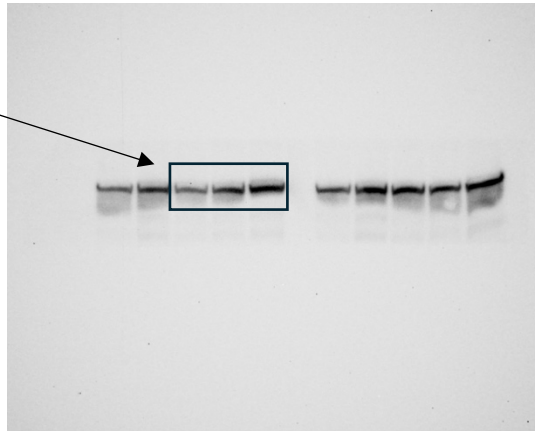
Cropped area



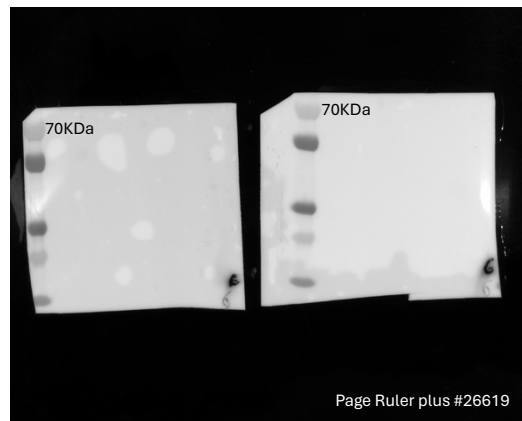
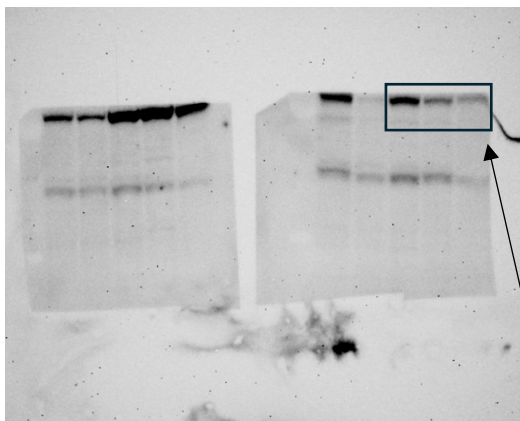
Histone control run on the same gel. Gel was cut for antibody incubation and development.

2. YUMM1.7 Melanoma BLOT: **Extended Data Fig. 5m**

- Vinculin (~116kDa)
*on left side for COX2 samples on right side for COX1 samples



- COX 1 (left) COX2 (right) ~74KDa



Vinculin control run on the same gel. Gel was cut for antibody incubation and development.