

OPEN

# Prognostic Value of Serum Tumor Markers in Medullary Thyroid Cancer Patients Undergoing Vandetanib Treatment

R.A. Werner, MD, J.S. Schmid, MD, D.O. Muegge, PhD, K. Lückerath, PhD,  
T. Higuchi, MD, PhD, H. Hänscheid, PhD, I. Grelle, C. Reiners, MD, K. Herrmann, MD,  
A.K. Buck, MD, and C. Lapa, MD

**Abstract:** Tyrosine kinase inhibitors (TKIs) such as vandetanib have shown clinical effectiveness in advanced medullary thyroid cancer (MTC). During TKI treatment, fluctuations in the tumor markers carcinoembryonic antigen (CEA) and calcitonin (CTN) are frequently observed. Their role for treatment monitoring and the decision-making process has not been fully elucidated yet.

Twenty-one patients (male, 16, female, 5; mean age,  $49 \pm 13$  years) with progressive MTC receiving vandetanib (300 mg orally per day) were considered. Tumor restaging was performed every 3 months including contrast-enhanced computed tomography (CT). Response was assessed according to recent criteria (Response Evaluation Criteria in Solid Tumors, RECIST 1.1). Additionally, CEA and CTN were measured at the day of CT imaging and alterations observed in tumor markers were compared to respective imaging findings (partial response, PR; stable disease, SD; progressive disease, PD).

During long-term follow-up ( $510 \pm 350$  days [range, 97–1140 days]), CTN and CEA levels initially dropped in 71.4% and 61.9% of the patients followed by fluctuations in serum marker levels. A rise in CTN  $\geq 39.5\%$  between 2 subsequent measurements (defined by ROC analysis) had a sensitivity of 70.6% and a specificity of 83.2% in predicting PD with an accuracy of 82.0% (area under the curve (AUC), 0.76). Oscillations in CEA levels were not predictive for PD.

Whereas tumor marker fluctuations in MTC patients undergoing TKI treatment are a frequent phenomenon, a significant rise in CTN  $\geq 40\%$  turns out to as an early indicator of tumor progression.

(*Medicine* 94(45):e2016)

**Abbreviations:** AUC = area under the curve, CEA = carcinoembryonic antigen, CT = computed tomography, CTN = calcitonin, MTC = medullary thyroid carcinoma, NPV = negative predictive value, PD = progressive disease, PPV = positive predictive value, RECIST = Response Evaluation Criteria in Solid Tumors, ROC = receiver operating characteristic, TKIs = tyrosine kinase inhibitors.

## INTRODUCTION

Medullary thyroid carcinoma (MTC) is a neuroendocrine tumor of the parafollicular cells of the thyroid gland that secretes both calcitonin (CTN) and carcinoembryonic antigen (CEA). It accounts for approximately 5% of thyroid carcinomas.<sup>1,2</sup> Due to its origination, MTC is not iodine-responsive and surgery remains the only curative option in early stages.<sup>3</sup> Patients with unresectable local disease and/or distant metastases are candidates for systemic treatment.

Recently, the tyrosine kinase inhibitors (TKIs) vandetanib and cabozantinib have been approved for use in MTC.<sup>4</sup> Although almost all patients respond initially with significant decreases in serum tumor marker levels during the first weeks after treatment initiation,<sup>5</sup> tumor escape to alternate pathways frequently occurs.<sup>6</sup> Therefore, early detection of progressive disease (PD) is crucial, facilitating treatment with alternative TKIs in case of apparent resistance to treatment. Serum tumor marker assessment, including measurement of both CTN and CEA, is a simple and well-established means of disease monitoring; however, the role of their kinetics in the long-term course of TKI treatment has not been fully elucidated yet. Fluctuations in both CTN and CEA without clinical relevance have recently been described.<sup>5</sup> Given the rising importance and more widespread clinical use of TKI in MTC patients outside the setting of controlled clinical trials, detection of the appropriate time point to modify the treatment in individual patients due to changes in serum tumor markers will be of growing importance in a clinical setting.

Therefore, we assessed the value of both CEA and CTN for prediction of tumor progression in MTC patients treated with vandetanib.

## METHODS

Between April 2007 and April 2013, 21 patients (16 male, 5 female; mean age,  $49 \pm 13$  years) received vandetanib (300 mg orally per day) due to advanced MTC on a compassionate use basis at the University Hospital of Würzburg, Germany. All patients underwent a number of previous treatments including surgery ( $n = 20/21$ ; 95.3%), chemotherapy ( $n = 3/21$ ; 14.3%), and radiation therapy ( $n = 3/21$ ; 14.3%). All patients gave written

Editor: Yong Liu.

Received: August 17, 2015; revised: October 5, 2015; accepted: October 19, 2015.

From the Department of Nuclear Medicine, University Hospital Würzburg, Würzburg, Germany (RAW, JSS, KL, TH, HH, IG, CR, KH, AKB, CL); Comprehensive Heart Failure Center, University Hospital Würzburg, Würzburg, Germany (RAW, TH, AKB); FOM University of Applied Sciences, Hamburg, Germany (DOM); and Department of Molecular and Medical Pharmacology, David Geffen School of Medicine at UCLA, Los Angeles, California, USA (KH).

Correspondence: Constantin Lapa, Department of Nuclear Medicine, University Hospital Würzburg, Oberdürrbacherstrasse 6, 97080 Würzburg, Germany (e-mail: lapac@ukw.de).

Authors' contributions: AKB, KH, CL, and RAW contributed to conception and design. CL, RAW, DOM, IG, and JSS acquired, analyzed, and interpreted the data. CL, RAW, KL, and DOM drafted the manuscript. HH, TH, KH, CR, and AKB revised the manuscript critically. All authors read and approved the final manuscript.

The authors have no conflicts of interest to disclose.

Copyright © 2015 Wolters Kluwer Health, Inc. All rights reserved. This is an open access article distributed under the Creative Commons Attribution-NonCommercial-NoDerivatives License 4.0, where it is permissible to download, share and reproduce the work in any medium, provided it is properly cited. The work cannot be changed in any way or used commercially.

ISSN: 0025-7974

DOI: 10.1097/MD.0000000000002016

TABLE 1. Detailed Patients' Characteristics

Case	Sex	Age (year)	WHO/ ECOG	Disease Duration (year)	Disease Type	Extent of Disease	Metastatic Sites	Prior Therapy	RET Mutation
#1	M	38	0	24	Sporadic	Metastatic	LN, lung	None	Unknown
#2	M	69	0	9	Sporadic	Metastatic	LN, bone, lung	Surgery	Negative
#3	M	62	0	16	Sporadic	Metastatic	liver	Surgery	Negative
#4	M	40	2	10	Sporadic	Metastatic	LN, bone, liver, lung	Surgery	Negative
#5	F	57	1	25	Sporadic	Metastatic	Liver, lung	Surgery	Unknown
#6	F	59	0	11	Sporadic	Metastatic	LN, liver	Surgery, CTx, somatostatin, TACE	Negative
#7	M	41	1	12	Sporadic	Metastatic	LN, lung	Surgery, CTx	Unknown
#8	M	50	1	13	Sporadic	Metastatic	LN, lung	Surgery	Unknown
#9	M	25	0	15	Hereditary	Metastatic	LN, lung	Surgery, RTx, PRRT	Unknown
#10	M	63	1	7	Sporadic	Metastatic	LN	Surgery	Unknown
#11	F	20	0	6	Sporadic	Metastatic	LN, liver	Surgery	Negative
#12	M	57	0	6	Hereditary	Metastatic	bone, liver, lung	Surgery, TACE	Positive
#13	M	40	1	11	Sporadic	Metastatic	LN, lung	Surgery, CTx	Unknown
#14	M	47	1	4	Sporadic	Metastatic	Lung	Surgery	Negative
#15	M	40	0	8	Sporadic	Metastatic	LN, bone, liver	Surgery	Negative
#16	F	40	2	15	Sporadic	Metastatic	LN, bone, liver	Surgery	Negative
#17	F	35	1	20	Sporadic	Metastatic	LN, lung	Surgery	Negative
#18	M	36	0	7	Sporadic	Metastatic	LN, liver, lung	Surgery, RTx, PRRT	Unknown
#19	M	70	0	6	Sporadic	Locally advanced	—	Surgery	Unknown
#20	M	59	0	2	Hereditary	Metastatic	LN	Surgery	Positive
#21	M	30		15	Sporadic	Metastatic	LN, liver, lung	Surgery, RTx	Negative

CTx = chemotherapy; ECOG = Eastern Cooperative Oncology Group; f = female; LN = lymph node; m = male; PRRT = peptide receptor radionuclide therapy; RET = rearranged-during-transfection; RTx = radiation therapy; TACE = transarterial chemoembolization; WHO = World Health Organization.

informed consent to the therapeutic and diagnostic procedures. As this study is a retrospective analysis of single-center data, the local ethic committee has waived the need for further approval. Detailed patient information including clinical factors is given in Table 1.

### Tumor Response Assessment

Onset of tumor progression (PD) was defined according to Response Evaluation Criteria in Solid Tumors (RECIST) 1.1 based on computed tomography (CT) performed every 3 months ( $9 \pm 6$  examinations per patient).<sup>7</sup> RECIST measurements were confirmed by both an attending nuclear medicine physician and radiologist. All scans were performed using a 64-slice spiral CT (SOMATOM Sensation 64, Siemens Medical Solutions, Erlangen, Germany) with intravenous contrast enhancement (care dose modulation with a quality reference of 210 mAs, 120 kV, a  $512 \times 512$  matrix, 5 mm slice thickness) or without (40 mAs, 120 kV, a  $512 \times 512$  matrix, 5 mm slice thickness), covering the base of the skull to the proximal thighs.

### Tumor Markers

CEA ( $\mu\text{g/L}$ ) and CTN ( $\text{pg/ml}$ ) were measured at baseline and at each restaging time point using dedicated radioimmunoassays (electro-chemiluminescence immunoassay, DPC-Biermann-Siemens, Bad Nauheim, Germany [CEA] and immunoluminometric assay, DPC-Biermann-Siemens, Bad Nauheim Germany [CTN]). Intra- and interassay comparisons were performed regularly. The upper reference-limit for CTN is

18.2  $\text{pg/ml}$  and for CEA 5.0  $\mu\text{g/l}$  (nonsmokers) and 6.5  $\mu\text{g/l}$  (smokers), respectively.

### Analysis and Statistics

A potential relationship between imaging findings and serum tumor marker levels was investigated. Statistical analyses were performed using PASW Statistics software (version 22.0; SPSS, Inc., Chicago, IL). Quantitative values were expressed as mean  $\pm$  standard deviation and range as appropriate. The 2-tailed paired Student *t* test was used to compare differences between 2 dependent groups, and the 2-tailed independent Student *t* test for differences between independent groups. A *P*-value of less than 0.05 was assumed to be statistically significant. Cut-off values for the prediction of imaging-based PD were determined for CTN by receiver operating characteristic (ROC) analysis.<sup>8</sup> Additionally, in order to test a correlation between tumor markers and clinical factors, Pearson correlation was performed. A *P*-value of 0.05 or less was considered to be statistically significant. Other observations described are of descriptive nature.

## RESULTS

### Patients

At baseline CT, performed before initiation of therapy with vandetanib, all patients presented with progressive metastatic/locally advanced disease. Metastatic sites included lymph nodes ( $n = 16/21$ ; 76.2%), lung ( $n = 13/21$ ; 61.9%), liver ( $n = 10/21$ ; 47.6%), and bone ( $n = 5/21$ , 23.8%). Mean follow-up of subjects was  $510 \pm 350$  days (range, 97–1140 days). Information

on RET mutation status was available in 12/21 patients (57.1%). A germline RET mutation was present in 2/12 subjects, whereas the remaining 10/12 patients tested were negative for both germline and sporadic mutations.

**Tumor Marker Kinetics**

Before treatment, all but 1 patient (Patient #19) had elevated CTN and CEA levels with median baseline values of 13,657 pg/ml (range, 2.5–135,100) and 458 μg/L (range, 2.8–1014.8), respectively. An initial decrease of CTN (at 3 months) was recorded in 15/21 (71.4%) of the subjects, whereas 6/21 (28.6%) patients did not show biochemical response to therapy. In the course of treatment, CTN levels dropped to a nadir in 14/21 (66.6%) with a median drop of 45.7% (range, 11–98%). The nadir was reached after 268 ± 208 days (range, 5–777 days). Thereafter, fluctuations in CTN could be observed in all 14 subjects, temporarily exceeding baseline in 9/14 cases (64.3%). Of the remaining 7 patients, 5 presented with continuously declining, 2 with continuously rising tumor marker levels during follow-up.

At 3 months, CEA levels decreased in 13/21 subjects (61.9%). In the course of vandetanib treatment, CEA levels dropped to a nadir in 7/21 (33.3%) subjects (median drop of 18.9% [range, 6–56%]). The nadir was reached after 368 ± 273

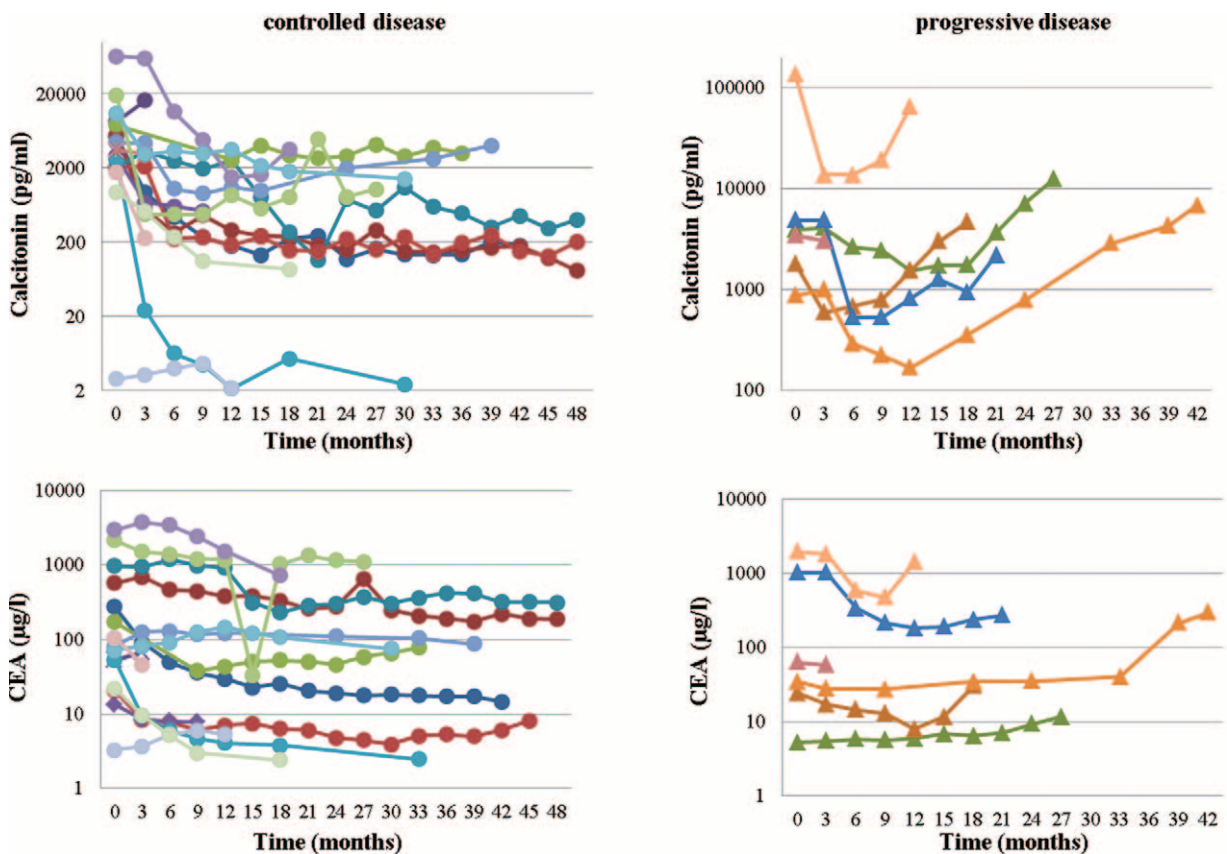
days (range, 5–776 days). Thereafter, alterations were recorded in all of these 7 patients with CEA spiking above baseline in 1/7 (14.1%). Of the remaining 14 patients, 4 demonstrated continuously increasing, 10 with continuously decreasing tumor marker levels.

**Tumor Response**

During a follow-up period of 17 ± 11.7 months, 13/21 (61.9%) patients could be classified as having stable disease (SD) and 2/21 (9.5%) achieved a partial response (PR) according to RECIST. On average 517 ± 461 days (range, 97–1449 days) after pretherapeutic baseline CT, 6/21 (28.6%) patients (28.5%) developed PD. None of the patients died from their cancer within follow-up. Of note, in contrast to the patients with controlled disease, CTN demonstrated a more continuous pattern in tumor marker increases in the subjects with PD. This pattern was not as distinct for CEA. The respective time curves of CTN and CEA levels for both patient groups (progressive vs. controlled) are given in Figure 1.

**Correlation of Tumor Markers With Age, Sex, and Imaging Findings**

Changes in CEA moderately correlated with changes in CTN ( $r = 0.405$ ,  $P < 0.001$ ), independent from age and sex.



**FIGURE 1.** Time curves (of every patient) for calcitonin (CTN) and carcinoembryonic antigen (CEA) for patients with controlled (stable disease or partial response; left) or progressive disease (right). Almost all patients display an initial decline in serum tumor markers after initiation of treatment with vandetanib, whereas the patients with long-term disease control just present with transient fluctuations in CTN and CEA levels (left column), the subjects with true progressive disease experience a continuous rise in tumor markers (right column). This distinction is more prominent for CTN than for CEA.

**TABLE 2.** Overview of Results of ROC Analysis for CTN

Cut-Off Value	Sensitivity	Specificity	Accuracy	PPV	NPV
≥14.5	82.4	70.2	71.3	22.6	97.3
≥39.5	70.6	83.2	82.0	30.8	96.4

CTN = calcitonin; NPV = negative predictive value; PPV = positive predictive value; ROC = receiver operating curve.

All results are given in %.

## ROC Analysis

Whereas changes in CEA levels were not predictive for PD, a rise in CTN with a cut-off value of  $\geq 14.5\%$  predicted morphologic progression with a sensitivity of 82.4% and a specificity of 70.2%, resulting in an accuracy of 71.3% (area under the curve (AUC) 0.76; positive predictive value (PPV), 22.6%; negative predictive value (NPV), 97.3%. A cut-off value  $\geq 39.5\%$  yielded a sensitivity of 70.6% and a specificity of 83.2% with an accuracy of 82.0% (PPV, 30.8%, NPV, 96.4%; Table 2; Fig. 2).

## DISCUSSION

The clinical utility of both tumor markers CTN and CEA in the management of MTC is well accepted.<sup>9</sup> RET inhibition therapy using TKIs has been reported to be associated with an initial rapid decline in tumor marker levels and a subsequent phase of oscillation without necessarily indicating relapse, resistance to treatment or PD.<sup>5</sup> Controlling a pathway responsible for CTN gene transcription and protein secretion, RET inhibitors

may influence serum tumor marker levels without any reference to tumor burden or growth inhibition. However, true tumor escape cannot always be excluded. In our cohort enrolling patients with advanced disease not adequately responding to 1st or 2nd line therapy, PD developed more than 1 year after initiation of TKI therapy. Given the increasing use of this class of drugs, the rising number of long-term treatments and the growing numbers of RET- or other kinase-directed medications, it is important to discern the optimal time point for further work-up and, potentially, a change in treatment management.

In our study comprising 21 MTC vandetanib treated MTC patients, a rise in CTN  $\geq 40\%$  predicted PD (as detected by CT) with an accuracy of 82%. This cut-off value might serve treating physicians outside the scenario of controlled studies as an indicator when to order further diagnostic work-up or when to consider a change in patient management. Short-term fluctuations lower than this cut-off could be observed before taking further diagnostic or therapeutic steps.

In contrast to CTN, CEA did not prove to have any value for prediction of morphologic progression. The heterogeneity of CEA secretion in MTC has already been reported.<sup>10,11</sup> Given the variety of conditions that are associated with an elevated CEA, this tumor marker appears inferior to CTN.

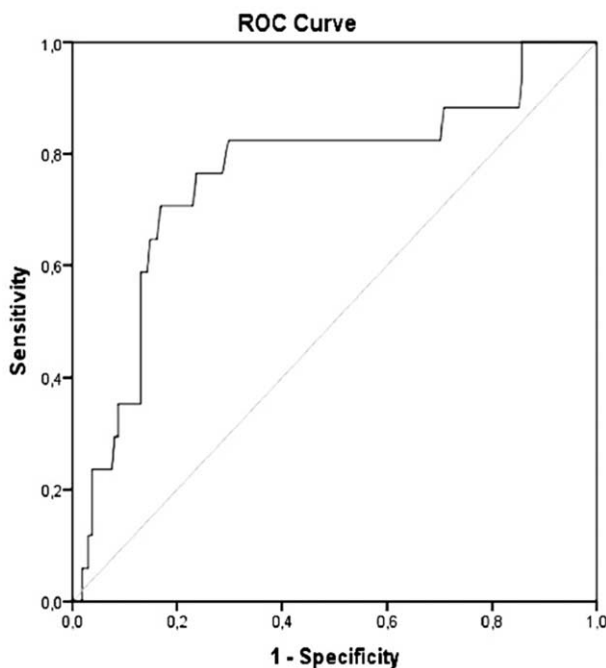
The present study underlines the fact that changes in tumor markers not always reflect changes in tumor size. In analogy to previously published studies, we could confirm a solid initial decrease of both tumor markers upon treatment initiation with a TKI with subsequent fluctuations in the majority of patients.<sup>5,12,13</sup> Compared to other trials investigating different TKIs, a homogenous patient cohort exclusively under vandetanib followed-up up to almost 7 years was enrolled in this study.<sup>5</sup> The fluctuations in both tumor marker levels compared to imaging-based findings clearly indicate that short-term variations may not reflect treatment response in MTC patients undergoing vandetanib treatment.

This study has some limitations. First, only a small number of patients could be included, thereby limiting statistical power of analyses. Especially type II error concerning the value of CEA cannot be excluded. Future studies in larger cohorts are needed to fully elucidate the significance of CEA oscillations for patient management. Second, this is a retrospective analysis and a prospective approach is necessary to strengthen our preliminary findings. Third, in almost 50% of subjects the RET mutation status was not known and only 2 patients with RET mutations could be enrolled.

In summary, in MTC patients undergoing treatment with vandetanib, an increase of 40% in serum CTN levels predicts objective PD with good accuracy and should trigger further diagnostic work-up. Whereas all patients on TKI present with oscillating tumor markers after an initial nadir, changes in CTN  $< 40\%$  can be monitored before taking further actions, that is, discontinuing medication. CEA levels do not seem to be of prognostic value for TKI monitoring. Larger prospective studies are needed to fully elucidate the association between tumor marker levels and tumor biology.

## CONCLUSIONS

Tumor marker fluctuations in MTC patients undergoing vandetanib treatment are a frequently observed phenomenon and should not prompt drug discontinuation. A rise in CTN  $\geq 40\%$  indicates tumor progression suggesting further diagnostic work-up. The value of CEA in the setting of TKI response monitoring seems to be rather limited.



**FIGURE 2.** Receiver operating characteristic (ROC) curves of calcitonin for prediction of progressive disease. Area under the curve = 0.76.



## ACKNOWLEDGMENTS

We thank all members of the laboratory of the nuclear medicine department Würzburg for their assistance. Additionally, we express our gratitude to Johanna Vogt for her assistance in data analysis.

## REFERENCES

- Schlumberger M, Carlomagno F, Baudin E, et al. New therapeutic approaches to treat medullary thyroid carcinoma. *Nat Clin Pract Endocrinol Metab.* 2008;4:22–32.
- Elisei R, Cosci B, Romei C, et al. Prognostic significance of somatic RET oncogene mutations in sporadic medullary thyroid cancer: a 10-year follow-up study. *J Clin Endocrinol Metab.* 2008;93:682–687.
- Elisei R, Ugolini C, Viola D, et al. BRAF(V600E) mutation and outcome of patients with papillary thyroid carcinoma: a 15-year median follow-up study. *J Clin Endocrinol Metab.* 2008;93:3943–3949.
- Wells SA Jr, Robinson BG, Gagel RF, et al. Vandetanib in patients with locally advanced or metastatic medullary thyroid cancer: a randomized, double-blind phase III trial. *J Clin Oncol.* 2012;30:134–141.
- Kurzrock R, Atkins J, Wheler J, et al. Tumor marker and measurement fluctuations may not reflect treatment efficacy in patients with medullary thyroid carcinoma on long-term RET inhibitor therapy. *Ann Oncol.* 2013;24:2256–2261.
- Niedzwiecki S, Stepien T, Kopec K, et al. Angiopoietin 1 (Ang-1), angiopoietin 2 (Ang-2) and Tie-2 (a receptor tyrosine kinase) concentrations in peripheral blood of patients with thyroid cancers. *Cytokine.* 2006;36:291–295.
- Eisenhauer EA, Therasse P, Bogaerts J, et al. New response evaluation criteria in solid tumours: revised RECIST guideline (version 1.1). *Eur J Cancer.* 2009;45:228–247.
- Zou KH, O'Malley AJ, Mauri L. Receiver-operating characteristic analysis for evaluating diagnostic tests and predictive models. *Circulation.* 2007;115:654–657.
- Cohen R, Campos JM, Salaun C, et al. Preoperative calcitonin levels are predictive of tumor size and postoperative calcitonin normalization in medullary thyroid carcinoma. Groupe d'Etudes des Tumeurs a Calcitonine (GETC). *J Clin Endocrinol Metab.* 2000;85:919–922.
- Akeno-Stuart N, Croyle M, Knauf JA, et al. The RET kinase inhibitor NVP-AST487 blocks growth and calcitonin gene expression through distinct mechanisms in medullary thyroid cancer cells. *Cancer Res.* 2007;67:6956–6964.
- Busnardo B, Girelli ME, Simioni N, et al. Nonparallel patterns of calcitonin and carcinoembryonic antigen levels in the follow-up of medullary thyroid carcinoma. *Cancer.* 1984;53:278–285.
- Kurzrock R, Sherman SI, Ball DW, et al. Activity of XL184 (Cabozantinib), an oral tyrosine kinase inhibitor, in patients with medullary thyroid cancer. *J Clin Oncol.* 2011;29:2660–2666.
- Hong DS, Sebt SM, Newman RA, et al. Phase I trial of a combination of the multikinase inhibitor sorafenib and the farnesyl-transferase inhibitor tipifarnib in advanced malignancies. *Clin Cancer Res.* 2009;15:7061–7068.