

## mNG-tagged *mls-2* knock-in alleles in *C. elegans*

Rui Xiong<sup>1</sup>, Yi-Wen Hsieh<sup>1</sup> and Chiou-Fen Chuang<sup>1,2§</sup>

<sup>1</sup>Department of Biological Sciences, University of Illinois at Chicago

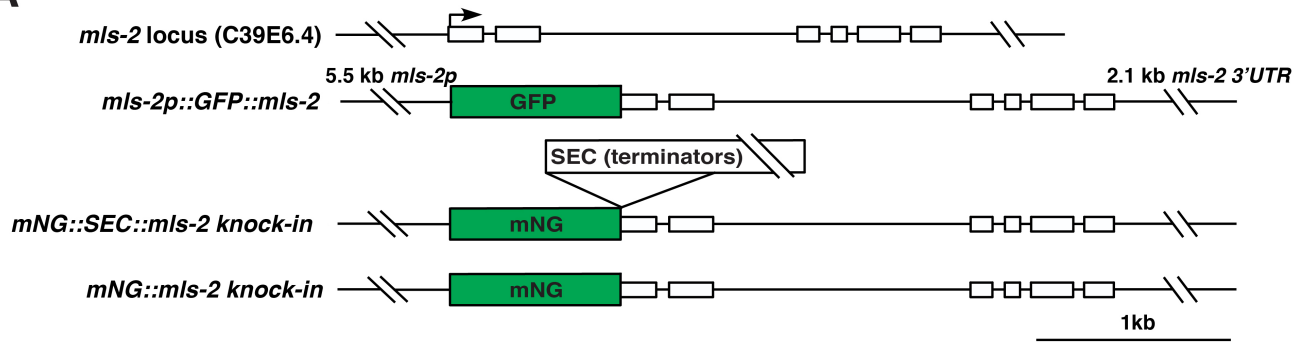
<sup>2</sup>Graduate Program in Neuroscience, University of Illinois at Chicago

<sup>§</sup>To whom correspondence should be addressed: chioufen.chuang@gmail.com

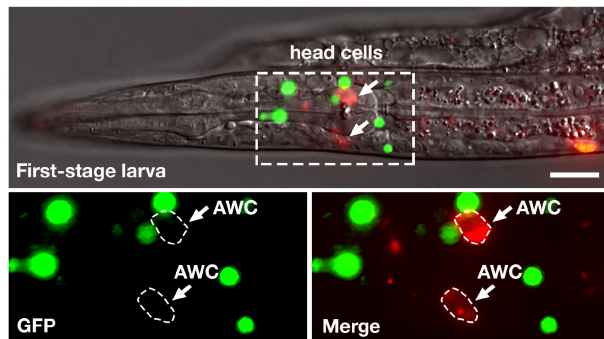
### Abstract

The *Caenorhabditis elegans* HMX/NKX MLS-2 transcription factor was previously shown to play sequential roles in AWC general identity and the stochastic AWC<sup>ON</sup>/AWC<sup>OFF</sup> subtype choice during embryogenesis. Here we analyze the expression pattern of endogenous *mls-2* during AWC development using mNeonGreen (mNG) knock-in strains. Similar to transgenic GFP::*MLS-2*, functional mNG::*MLS-2* knock-in displayed nuclear localization in AWC precursor cells but was not observed in AWC during the later embryonic stage. These results suggest that the expression of *mls-2* is below the detectable level and/or the stability of *MLS-2* protein is very low in AWC cells.

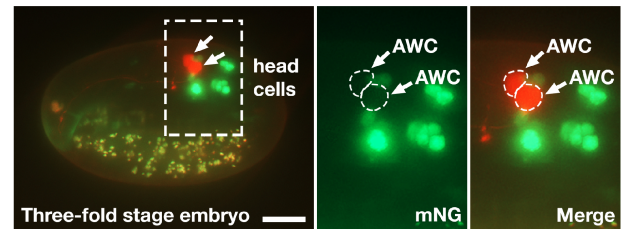
**A**



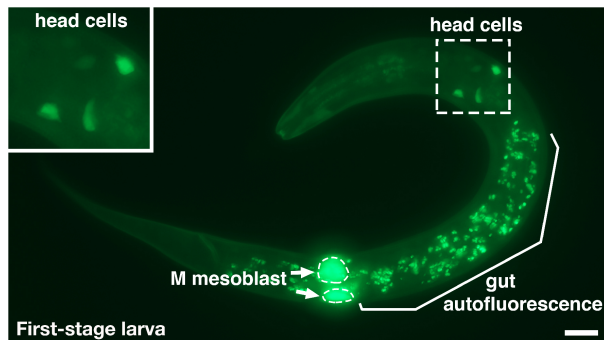
**B** *mls-2p::GFP::mls-2; odr-1p::DsRed*



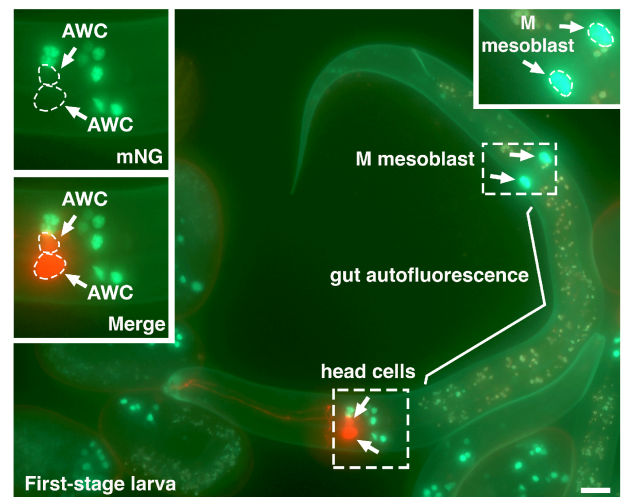
**F** *mNG::mls-2* knock-in; *odr-1p::TagRFP*



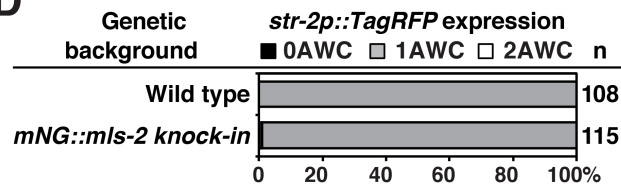
**C** *mNG::SEC::mls-2* knock-in



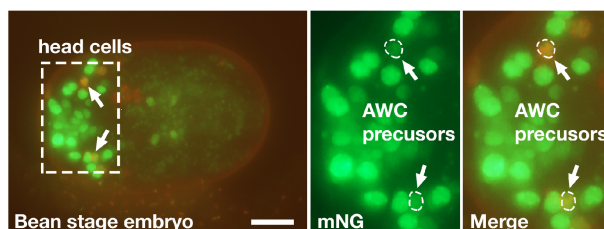
**G** *mNG::mls-2* knock-in; *odr-1p::TagRFP*



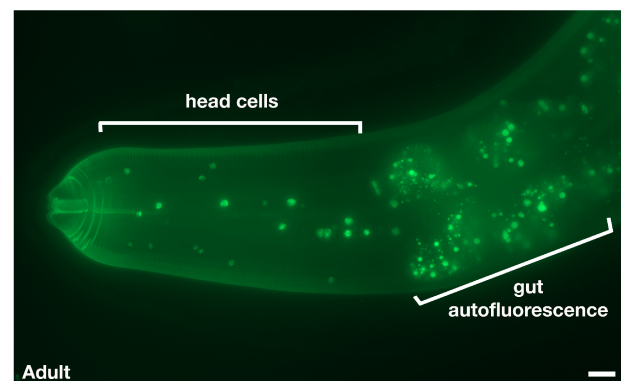
**D**



**E** *mNG::mls-2* knock-in; *hlh-16p::H1-wCherry*



**H** *mNG::mls-2* knock-in



**Figure 1. Expression patterns of *mls-2p::GFP::mls-2* transgene, *mNG::SEC::mls-2 knock-in*, and *mNG::mls-2 knock-in*:** (A) Structure of the *mls-2* locus, *mls-2p::GFP::mls-2* transgene (Jiang *et al.*, 2005), *mNG::SEC::mls-2 knock-in*, and *mNG::mls-2 knock-in*. mNG, mNeonGreen. SEC, self-excising cassette containing transcriptional terminators, a dominant roller phenotype marker *sqt-1(e1350)*, Cre driven by a heat shock promoter, and a hygromycin resistance gene. The SEC cassette is flanked by LoxP sites. (B-H) Representative images of GFP::MLS-2 expression from a *mls-2p::GFP::mls-2* extrachromosomal transgene in a first-stage larva (B), mNG expression from *mNG::SEC::mls-2 knock-in* in a first-stage larva (C), and mNG::MLS-2 expression from *mNG::mls-2 knock-in* animals in different developmental stages (E-H). Integrated transgenes of *hlh-16::H1-wCherry* and *odr-1p::TagRFP* (or *odr-1p::DsRed*) were used as early and late AWC markers, respectively. Insets in panels B, C, E, F, and G are magnified by 2-fold. Scale bar, 10  $\mu$ m. Anterior to the left and ventral to the bottom in lateral or ventrolateral views of the head region in B, C, and F-H; ventral view in E. (D) Expression of the AWC<sup>ON</sup> marker *str-2p::TagRFP* from an integrated transgene in wild type and *mNG::mls-2 knock-in* animals. n, total number of animals scored.

## Description

The HMX/NKX MLS-2 transcription factor plays a role in the development of the postembryonic mesoderm, CEPsh glia, tube cells of the excretory system, general AWC identity, and AWC asymmetry in *C. elegans* (Jiang *et al.*, 2005; Yoshimura *et al.*, 2008; Kim *et al.*, 2010; Abdus-Saboor *et al.*, 2012; Hsieh *et al.*, 2021). The expression pattern of MLS-2 protein has been previously examined by immunohistochemical staining with anti-MLS-2 antibodies, transgenes of GFP-tagged MLS-2 (GFP::MLS-2), and *mls-2::GFP* fosmid reporter lines (Jiang *et al.*, 2005; Yoshimura *et al.*, 2008; Kim *et al.*, 2010; Abdus-Saboor *et al.*, 2012; Walton *et al.*, 2015; Reilly *et al.*, 2020) (Figure 1A). It was shown that GFP::MLS-2 was expressed in the embryonic AWC lineages from automated lineage analysis and was detected transiently in AWC neurons in first-stage larvae (Kim *et al.*, 2010; Abdus-Saboor *et al.*, 2012; Walton *et al.*, 2015). However, we did not detect expression of GFP::MLS-2 transgenes in AWC neurons in late embryos or the first larval stage (Figure 1B).

To determine the expression pattern of endogenous *mls-2* locus in AWC, we generated *mNG::SEC::mls-2 knock-in* and *mNG::mls-2 knock-in* animals by tagging the 5' end of endogenous *mls-2* coding region with mNG::SEC or mNG using Cas9-triggered homologous recombination (Dickinson *et al.*, 2013; Dickinson *et al.*, 2015; Dickinson and Goldstein, 2016) (Figure 1A). The *mNG::SEC::mls-2 knock-in* allele is a transcriptional reporter of *mls-2*, since the self-excising cassette (SEC) contains transcriptional terminators. *mNG::SEC::mls-2 knock-in* showed diffuse mNG expression in numerous cells in the head and the M mesoblast of first-stage larvae (Figure 1C). The *mNG::mls-2 knock-in* allele, generated by the SEC excision of *mNG::SEC::mls-2 knock-in*, is a translational reporter of MLS-2 protein. *mNG::mls-2 knock-in* animals displayed wild-type AWC asymmetry as determined by the expression of the AWC<sup>ON</sup> marker *str-2p::TagRFP* (Figure 1D), suggesting that mNG::MLS-2 fusion protein is functional in AWC development. Like GFP::MLS-2 expressed from transgenes, mNG::MLS-2 knock-in was localized in the nucleus of AWC precursor cells in early embryos (Figure 1E) but was not observed in AWC cells in late embryos (Figure 1F) or early-stage larvae (Figure 1G). Our results are consistent with single-cell RNA-seq data showing that *mls-2* was briefly expressed at a very low level in AWC during early embryogenesis but not detected in AWC in second-stage larvae (Cao *et al.*, 2017; Packer *et al.*, 2019). It was also shown that MLS-2::GFP expressed from an integrated *mls-2::GFP* fosmid reporter line was not detected in AWC in late larval stage or young adult-stage using NeuroPAL (Reilly *et al.*, 2020).

Similar to MLS-2 antibody staining and GFP::MLS-2 transgenes (Jiang *et al.*, 2005), mNG::MLS-2 knock-in was localized to the nucleus of a subset of head cells and the M mesoblast in first-stage larvae and adults (Figure 1G and 1H). *mNG::SEC::mls-2 knock-in* and *mNG::mls-2 knock-in* strains should help to determine the endogenous expression pattern of *mls-2* in different cells during development.

## Methods

[Request a detailed protocol](#)

*mNG::SEC::mls-2* and *mNG::mls-2 knock-in* were generated using the Cas9-triggered homologous recombination protocol as previously described (Dickinson *et al.*, 2013; Dickinson *et al.*, 2015).

## Reagents

Strain	Genotype	Source
IX1119	<i>oyIs44 [odr-1p::DsRed; lin-15(+)] V; vyEx535 [mls-2p::GFP::mls-2::mls-2 3'UTR (Jiang et al., 2005); ofm-1p::DsRed]</i>	This study

IX4507	<i>mIs-2(vy247 [mNG::SEC::mIs-2 knock-in]) X</i>	This study
IX4506	<i>mIs-2(vy248 [mNG::mIs-2 knock-in]) X</i>	This study
RW10588	<i>unc-119(ed3); zuIs178 [his-72(1kb 5' UTR)::his-72::SRPVAT::GFP::his-72 (1KB 3' UTR) + 5.7 kb XbaI-HindIII unc-119(+)]</i> ; <i>stIs10544 [hlh-16::H1-wCherry::let-858 3' UTR]</i>	Murray <i>et al.</i> , 2012
IX5609	<i>stIs10544 [hlh-16::H1-wCherry::let-858 3' UTR]</i> (Murray <i>et al.</i> , 2012); <i>mIs-2(vy248 [mNG::mIs-2 knock-in]) X</i>	This study
IX4894	<i>vyIs56 [odr-1p::TagRFP] III</i> (Cochella <i>et al.</i> , 2014); <i>mIs-2(vy248 [mNG::mIs-2 knock-in]) X</i>	This study
IX3212	<i>vyIs68 [str-2p::TagRFP; srsx-3p::GFP] III</i>	Cochella <i>et al.</i> , 2014

**Acknowledgments:** We thank Dr. Jun Liu for the plasmid *mIs-2p::GFP::mIs-2::mIs-2 3'UTR*. The RW10588 strain was provided by the Caenorhabditis Genetics Center (CGC), which is funded by NIH Office of Research Infrastructure Programs (P40 OD010440).

## References

- Abdus-Saboor I, Stone CE, Murray JI, Sundaram MV. 2012. The Nkx5/HMX homeodomain protein MLS-2 is required for proper tube cell shape in the *C. elegans* excretory system. *Dev Biol* 366: 298-307. PMID: 22537498.
- Cao J, Packer JS, Ramani V, Cusanovich DA, Huynh C, Daza R, Qiu X, Lee C, Furlan SN, Steemers FJ, Adey A, Waterston RH, Trapnell C, Shendure J. 2017. Comprehensive single-cell transcriptional profiling of a multicellular organism. *Science* 357: 661-667. PMID: 28818938.
- Cochella L, Tursun B, Hsieh YW, Galindo S, Johnston RJ, Chuang CF, Hobert O. 2014. Two distinct types of neuronal asymmetries are controlled by the *Caenorhabditis elegans* zinc finger transcription factor *die-1*. *Genes Dev* 28: 34-43. PMID: 24361693.
- Dickinson DJ, Goldstein B. 2016. CRISPR-Based Methods for *Caenorhabditis elegans* Genome Engineering. *Genetics* 202: 885-901. PMID: 26953268.
- Dickinson DJ, Pani AM, Heppert JK, Higgins CD, Goldstein B. 2015. Streamlined Genome Engineering with a Self-Excising Drug Selection Cassette. *Genetics* 200: 1035-49. PMID: 26044593.
- Dickinson DJ, Ward JD, Reiner DJ, Goldstein B. 2013. Engineering the *Caenorhabditis elegans* genome using Cas9-triggered homologous recombination. *Nat Methods* 10: 1028-34. PMID: 23995389.
- Hsieh YW, Xiong R, Chuang CF. 2021. Synergistic roles of homeodomain proteins UNC-62 homothorax and MLS-2 HMX/NKX in the specification of olfactory neurons in *Caenorhabditis elegans*. *Genetics* 219: iyab133. PMID: 34849889.
- Jiang Y, Horner V, Liu J. 2005. The HMX homeodomain protein MLS-2 regulates cleavage orientation, cell proliferation and cell fate specification in the *C. elegans* postembryonic mesoderm. *Development* 132: 4119-30. PMID: 16107479.
- Kim K, Kim R, Sengupta P. 2010. The HMX/NKX homeodomain protein MLS-2 specifies the identity of the AWC sensory neuron type via regulation of the *ceh-36 Otx* gene in *C. elegans*. *Development* 137: 963-74. PMID: 20150279.
- Murray JI, Boyle TJ, Preston E, Vafeados D, Mericle B, Weisdepp P, Zhao Z, Bao Z, Boeck M, Waterston RH. 2012. Multidimensional regulation of gene expression in the *C. elegans* embryo. *Genome Res* 22: 1282-94. PMID: 22508763.
- Packer JS, Zhu Q, Huynh C, Sivaramakrishnan P, Preston E, Dueck H, Stefanik D, Tan K, Trapnell C, Kim J, Waterston RH, Murray JI. 2019. A lineage-resolved molecular atlas of *C. elegans* embryogenesis at single-cell resolution. *Science* 365: eaax1971. PMID: 31488706.
- Reilly MB, Cros C, Varol E, Yemini E, Hobert O. 2020. Unique homeobox codes delineate all the neuron classes of *C. elegans*. *Nature* 584: 595-601. PMID: 32814896.
- Walton T, Preston E, Nair G, Zacharias AL, Raj A, Murray JI. 2015. The Bicoid class homeodomain factors *ceh-36/OTX* and *unc-30/PITX* cooperate in *C. elegans* embryonic progenitor cells to regulate robust development. *PLoS Genet* 11: e1005003. PMID: 25738873.
- Yoshimura S, Murray JI, Lu Y, Waterston RH, Shaham S. 2008. *mIs-2* and *vab-3* Control glia development, *hlh-17/Olig* expression and glia-dependent neurite extension in *C. elegans*. *Development* 135: 2263-75. PMID: 18508862.

**Funding:** This work was funded by a grant, R01GM098026 awarded to CFC, from the National Institute of General Medical Sciences of the National Institutes of Health.

**Author Contributions:** Rui Xiong: Conceptualization, Methodology, Investigation, Formal analysis, Writing - review and editing. Yi-Wen Hsieh: Conceptualization, Methodology, Investigation, Formal analysis, Writing - review and editing. Chiou-Fen Chuang: Conceptualization, Writing - original draft, Writing - review and editing, Funding acquisition, Supervision.

**Reviewed By:** Paschalis Kratsios and Jayson Smith

**History:** **Received** January 14, 2022 **Revision received** February 9, 2022 **Accepted** February 10, 2022 **Published** February 22, 2022

**Copyright:** © 2022 by the authors. This is an open-access article distributed under the terms of the Creative Commons Attribution 4.0 International (CC BY 4.0) License, which permits unrestricted use, distribution, and reproduction in any medium, provided the original author and source are credited.

**Citation:** Xiong, R; Hsieh, YW; Chuang, CF (2022). mNG-tagged *mls-2 knock-in* alleles in *C. elegans*. microPublication Biology. <https://doi.org/10.17912/micropub.biology.000529>