

CORRECTION

Correction: The Mentalized Affectivity Scale (MAS): Development and validation of the Italian version

Teresa Rinaldi, Ilaria Castelli, Andrea Greco, David M. Greenberg, Elliot Jurist, Annalisa Valle, Antonella Marchetti

There are errors in the abstract. The line “The hierarchically structured MAS factors are: Emotional Processing (being able to process emotion in situations); Expressing Emotions (talking and knowing emotions); Identifying Emotions (awareness of emotions); Control Processing (to control emotional reactions and expression), and Autobiographical Memory (related to childhood experiences).” should instead read as follows: “The hierarchically structured MAS factors are: Identifying Emotions (awareness of emotions); Expressing Emotions (talking and knowing emotions); Curiosity about Emotions (Reflecting on own emotional experience to find a meaning); Processing Emotions (to control emotional reactions and expression), and Autobiographical Memory (related to childhood experiences).”

Additionally, Fig 1 is incorrect. The authors have provided a corrected version here.

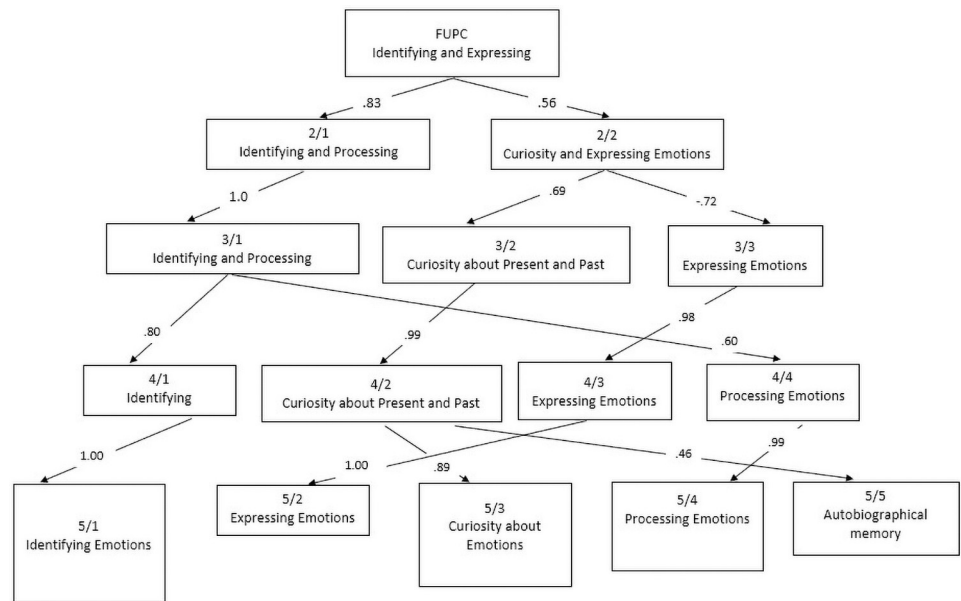
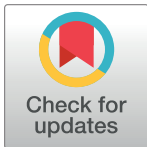


Fig 1. Varimax principal components derived from ratings for 35-items of the MAS. Note. The figure begins (top box) with the First Unrotated Principal Component (FUPC) and displays the genesis of the derivation of the 5 components obtained. Text within each box indicates the label of the factor. Arabic numerals within boxes indicate the number of factors extracted for a given level (numerator) and the factor number within that level (denominator; e.g., 2/1 indicates the first component in a two-component solution). Arabic numerals within the arrow paths indicate the Pearson product-moment correlation between a component obtained early in the extraction and a later component. For example, when expanding from a two-component solution to a three-factor solution (rows 2 and 3), we see that Factor 2/2, “Curiosity and Expressing Emotions” splits into two new factors, “Curiosity about Present and Past” (which correlates .69 with the parent component) and “Expressing emotions” (which correlates -.72 with the parent component).

<https://doi.org/10.1371/journal.pone.0257989.g001>

OPEN ACCESS

Citation: Rinaldi T, Castelli I, Greco A, Greenberg DM, Jurist E, Valle A, et al. (2021) Correction: The Mentalized Affectivity Scale (MAS): Development and validation of the Italian version. PLoS ONE 16(9): e0257989. <https://doi.org/10.1371/journal.pone.0257989>

Published: September 23, 2021

Copyright: © 2021 Rinaldi et al. This is an open access article distributed under the terms of the [Creative Commons Attribution License](https://creativecommons.org/licenses/by/4.0/), which permits unrestricted use, distribution, and reproduction in any medium, provided the original author and source are credited.

Reference

1. Rinaldi T, Castelli I, Greco A, Greenberg DM, Jurist E, Valle A, et al. (2021) The Mentalized Affectivity Scale (MAS): Development and validation of the Italian version. *PLoS ONE* 16(4): e0249272. <https://doi.org/10.1371/journal.pone.0249272> PMID: 33819283