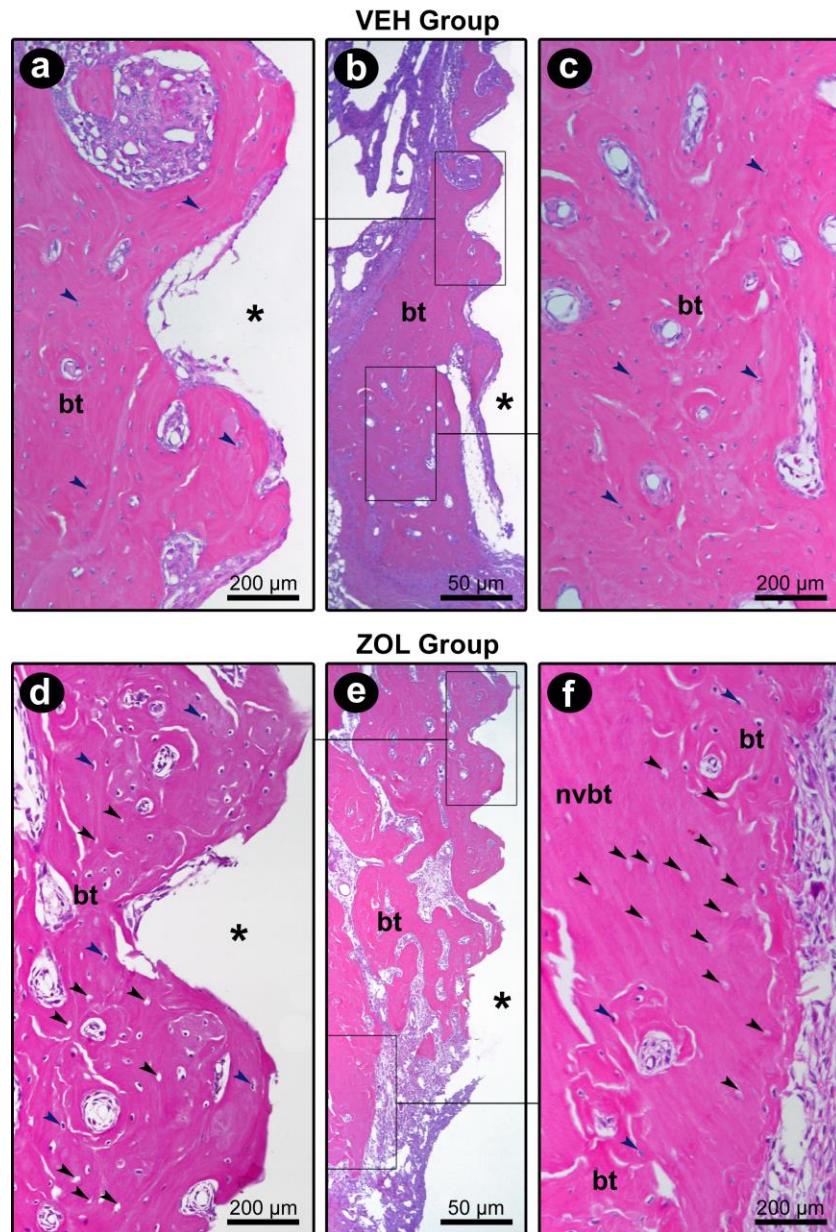
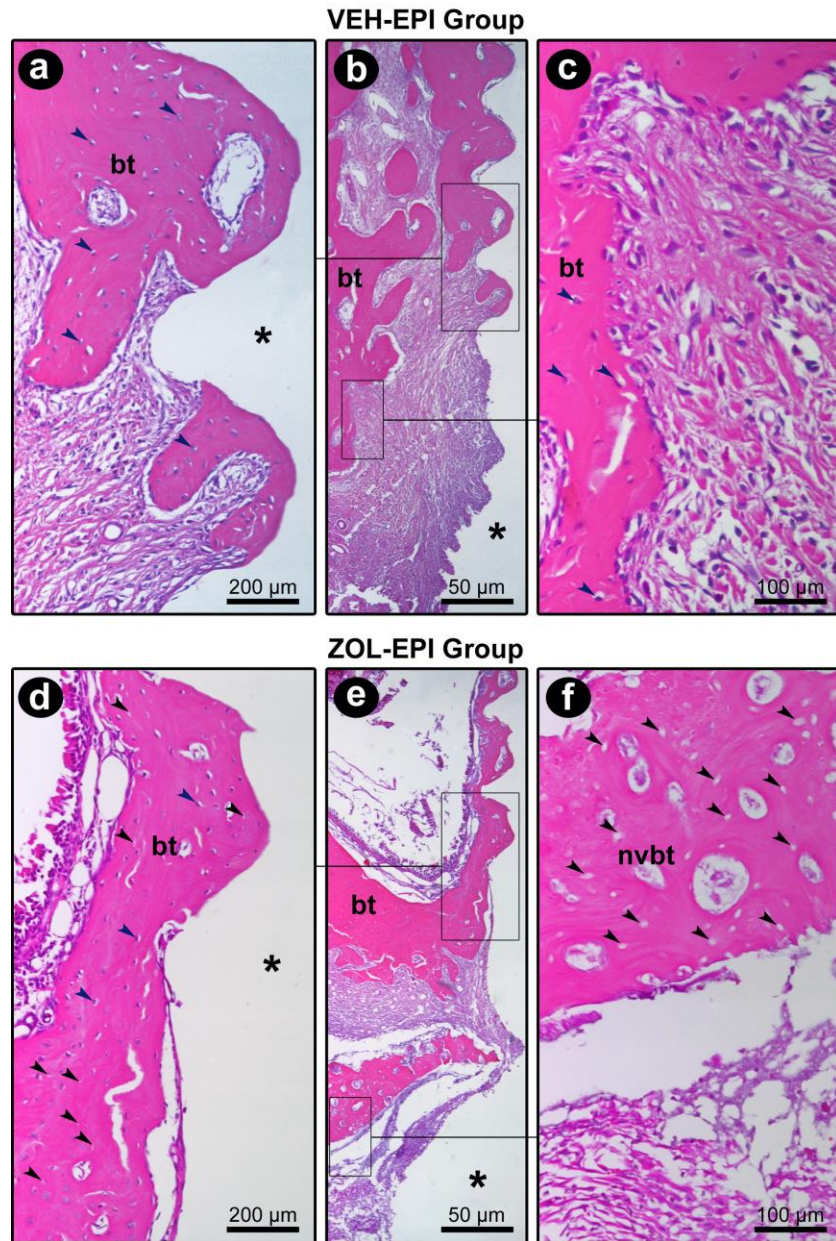


## SUPPLEMENTARY MATERIAL



**Supplementary material 1.** Histological appearance of the peri-implant tissues in the VEH (a – c) and ZOL (d – f) groups. In (b) and (e) photomicrographs at lower magnification in which it is possible to observe the site previously occupied by the dental implant (asterisks) and the tissues located around it. In (a) and (d) it can be see the bone tissue filling the dental implant threads and in (c) and (f) the appearance of the bone tissue located adjacent to it. Note the large amount of non-vital bone tissue in the ZOL group. Abbreviations and Symbols: asterisks, site previously occupied by the dental implant; bt, bone tissue; nvbt, non-vital bone tissue; blue arrows, osteocytes; black arrows, empty lacuna. Original magnification: a, c, d, f: 200x; b, e: 50x. Scale bars: a, c, d, f: 200μm; b, e: 50μm.



**Supplementary material 2.** Histological appearance of the peri-implant tissues in the VEH-EPI (a – c) and ZOL-EPI (d – f) groups. In (b) and (e) photomicrographs at lower magnification in which it is possible to observe the site previously occupied by the dental implant (asterisks) and the tissues located around it. In (a) and (d) it can be see the bone tissue filling the dental implant threads and in (c) and (f) the appearance of the bone tissue located adjacent to it. Note the bone loss in VEI-EPI group (b) and ZOL-EPI group (e), which is more pronounced in this last. Note in VEI-EPI group (b) and ZOL-EPI group (e) the intense inflammatory infiltrate in the peri-implant soft tissues, and in this last there is a severe disruption of such tissues. Note the large amount of non-vital bone tissue in ZOL-EPI group (e, f). Abbreviations and Symbols: asterisks, site previously occupied by the dental implant; bt, bone tissue; nvbt, non-vital bone tissue; blue arrows, osteocytes; black arrows, empty lacuna. Original magnification: a, d: 100x; b, e: 50x; b, e: 200x. Scale bars: a, d: 200μm; b, e: 50μm; c, f: 100μm.