




# Clinical Features of Aberrations Chromosome 22q: A Pilot Study

Emine Ikbal Atli<sup>1</sup>  Engin Atli<sup>1</sup> Sinem Yalcintepe<sup>1</sup> Selma Demir<sup>1</sup> Cisem Mail<sup>1</sup> Damla Eker<sup>1</sup>  
Yasemin Ozen<sup>1</sup> Hakan Gurkan<sup>1</sup>

<sup>1</sup>Department of Medical Genetics, Faculty of Medicine, Trakya University, Edirne, Turkey

Glob Med Genet 2022;9:42–50.

Address for correspondence Emine Ikbal Atli, PhD, Department of Medical Genetics, Faculty of Medicine, Trakya University, Balkan Campus, Highway D100, Edirne 22030, Turkey (e-mail: emine.ikbal@gmail.com).

## Abstract

**Objective** A significant number of genetic variations have been identified in chromosome 22, using molecular genetic techniques. Various genomic disorders on chromosome 22, including cat's eye syndrome caused by extra copies of the proximal region of the 22q chromosome, are now well-defined. Our aim in the study was to show phenotypic variability associated with rearrangements of the 22q chromosomal region.

**Methods** We focused our study on clinical aspects of these disorders, including genetic testing, genotype-phenotype correlation, and potential treatments. A total of 998 patients were referred for genetic analysis (Karyotyping, MLPA, array-CGH) during January 2015 to February 2020 because of intellectual deficiency, behavior issues, and/or multiple congenital abnormalities in several genetics departments. Informed consent was obtained from all the patients and/or their parents.

**Results** 22q11.21 or 22q13.33 microdeletions and 22q11.22-q11.23 microduplication were identified in 31 patients out of referrals. The 22q aberrations were detected in 31/998 patients, giving a prevalence of 3.1%. In this study, 18 patients with 22q11.2 (LCR22A-H) deletion, three patients with 22q13.31 deletion, 9 patients with 22q11.2 duplication and one patient with 22q13.31 duplication were identified. We report on the clinical and molecular characterization of 31 individuals with distal deletions and duplications of chromosome 22q.

**Conclusions** The current study demonstrated in the largest postnatal case series reporting the whole spectrum of atypical phenotypic and genotypic variations at 22q. We believe that when all the phenotypic differences are taken into account, various anomalies including developmental delay and intellectual disability might be considered as an indication to search for aberrations of 22q along with congenital heart diseases.

## Keywords

- ▶ 22q deletions
- ▶ 22q duplications
- ▶ Array CGH

## Introduction

Chromosome 22 is the second smallest human chromosome, covering 1.6 to 1.8% of the human genome. The short arm

(22p) of this acrocentric chromosome contains ribosomal genes, while the long arm (22q) contains genes encoding protein, and it is this region that is sequenced. Human chromosome 22 is an acrocentric chromosome spanning

received

September 10, 2021

accepted after revision

September 29, 2021

published online

November 9, 2021

DOI <https://doi.org/>

10.1055/s-0041-1739496.

ISSN 2699-9404.

© 2021. The Author(s).

This is an open access article published by Thieme under the terms of the Creative Commons Attribution License, permitting unrestricted use, distribution, and reproduction so long as the original work is properly cited. (<https://creativecommons.org/licenses/by/4.0/>)

Georg Thieme Verlag KG, Rüdigerstraße 14, 70469 Stuttgart, Germany

approximately 51 million base pairs, with more than 855 annotated genes.<sup>1,2</sup> A significant number of genetic variations have been identified in chromosome 22, using molecular genetic techniques. Nonmosaic trisomy and monosomy of chromosome 22 are observed in the prenatal period. Trisomy 22 is the second aneuploidy after trisomy 16 in spontaneous abortions, seen in approximately 2 to 5% of cases.<sup>3</sup> While most of these disorders are rare, the prevalence of some, such as velocardiofacial syndrome (also known as VCFS, 22q11 deletion syndrome, and DiGeorge syndrome [DGS]), is as common as 1: 2000 people. Various genomic disorders on chromosome 22, including cat's eye syndrome caused by extra copies of the proximal region of the 22q chromosome, are now well-defined (►Table 1). Cat's eye syndrome caused by extra copies of the proximal region of the 22q chromosome, VCFS, 22q11.2 duplication syndrome, 22q11.2 deletion syndrome, supernumerary der (22) t (11; 22), 3: 1 caused by malsegregation of the t (11; 22) syndrome, and 22q13.3 deletion syndrome are better defined today (►Table 1).<sup>4</sup> In addition to the genomic disorders with molecular causes listed in ►Table 1, there are hundreds of disorders associated with a gene, but the underlying cause is unknown or the disturbances are determined by statistical methods. Pathogenic copy number variants (CNVs) and CNVs of unknown clinical significance have been identified and added to the genetic variations to the complexity of human diseases.<sup>5</sup> The definition of the proximal region of chromosome 22q11.2 illustrates such progress.

This genomic region is rich in low copy repeats (LCRs), including LCR22A to LCR22H. Most of the genomic abnormalities of chromosome 22 occur as a result of LCR-mediated nonallelic homologous misalignments and intrachromosomal or interchromosome unequal recombination (NAHR) during meiosis.<sup>6</sup> In addition to the commonly deleted/duplicated region (LCRs A to D surrounded by LCR22s at both proximal and distal cutpoints for 3 Mb, 22q11.2 deletions and duplications), several "non-standard" deletions/duplication with var-

iable breakpoints results from differential recombination from LCR22A to LCR22H (►Fig. 1). Some of these have been identified as separate deletion/duplication syndromes with varying genomic dimensions such as 22q11.2 distal deletion syndrome and 22q11.2 distal duplication syndrome.<sup>7,8</sup> In addition to the LCR-mediated NAHR mechanism, several other mechanisms have been proposed to explain the formation of CNVs in the human genome, including CNVs on chromosome 22 such as nonhomologous splicing, microhomology-mediated break-induced replication, and tandem repeats-mediated genomic rearrangement. Correct determination of the breakpoints of a CNV is a prerequisite for understanding the basic mechanisms that lead to its formation and establish CNV-phenotype correlation.

Our aim in the study was to show phenotypic variability associated with rearrangements of the 22q11.2 chromosomal region.

We focussed our study on clinical aspects of these disorders, including genetic testing, genotype-phenotype correlation, and potential treatments.

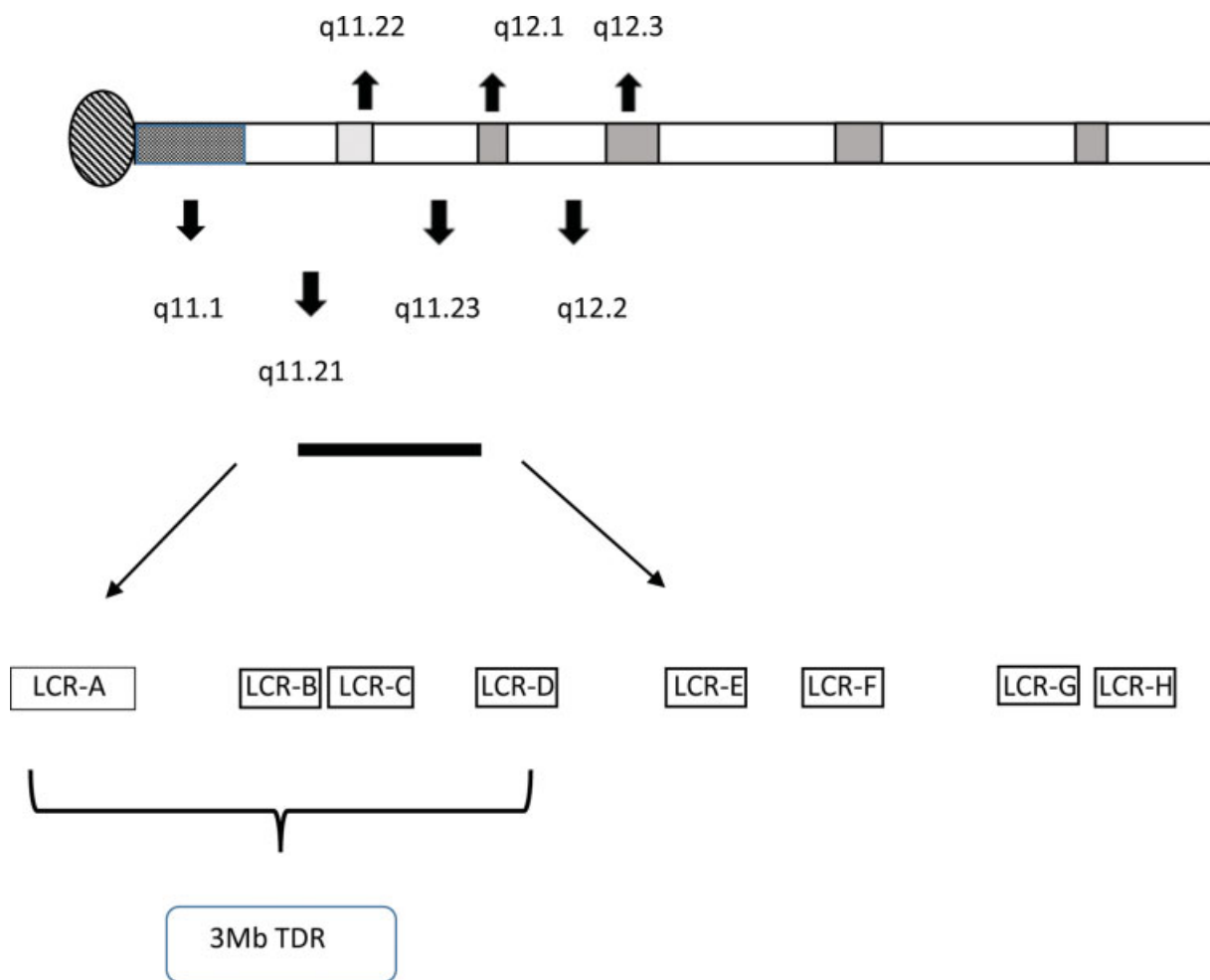
## Materials and Methods

All procedures performed in studies involving human participants were in accordance with the ethical standards of the institutional and/or national research committee (TUMF Scientific Research Ethics Committee Directive) and with the 1964 Helsinki Declaration and its later amendments or comparable ethical standards.

A total of 998 patients were referred for genetic analysis during January 2015 to February 2020 because of intellectual deficiency, behavior issues, and/or multiple congenital abnormalities in several genetics departments. Informed consent was obtained from all the patients and/or their parents. 22q11.21 or 22q13.33 microdeletions and 22q11.22-q11.23 microduplication were identified in 31 patients out of referrals. The clinical data of the 31 patients were retrospectively

**Table 1** Recurrent genomic disorders on chromosome 22

Location	Condition	Gene/locus MIM number	Gene(s)/locus	Detection rate by microarray
22q11.1	Cat eye syndrome	115470	Multiple	Precise detection rate unknown. The supernumerary marker chromosome is detectable by array CGH.
22q11.21	DiGeorge/Velocardiofacial/22q11.21 deletion syndrome	188400	TBX1	More than 95% have a detectable deletion.
22q11.21	22q11.21 duplication syndrome	608363	Multiple	Approximately 99% have a detectable duplication.
22q11.2	22q11.2 distal microdeletion syndrome	611867	Multiple	Approximately 99% have a detectable deletion.
22q12.2	Neurofibromatosis 2	101000	NF2	15–21% have a detectable deletion.
22q12.3	Walker-Warburg/muscular dystrophydystroglycanopathy A1	236670	LARGE	Deletions uncommon, recessive condition.
22q13.3	22q13.3 deletion syndrome	606232	SHANK3	Approximately 99% have a detectable deletion.
22q13.3	Metachromatic leukodystrophy/arylsulfatase A deficiency	250100	ARSA	Rare deletions. Recessive condition.



**Fig. 1** Schematic view of chromosome 22 indicating the position of the low-copy repeats in 22q11.2. LCR, low-copy repeat; TDR, typically deleted region.

collected by a questionnaire sent to each referring clinician to obtain information on prenatal abnormalities, birth parameters, psychomotor development, neurological examination, behavioral pattern, growth, dysmorphism, associated malformations, paraclinical investigations, and familial history.

### Karyotype and FISH

Patients were referred for cytogenetic testing. Cytogenetic analysis on cultured blood lymphocytes was performed, according to standard protocols. Trypsin-Leishman G banded (GTL) metaphases were interpreted at a resolution level of 450 bands.

### MLPA

Multiplex ligation-dependent probe amplification was performed on DNA from peripheral blood lymphocytes. Kits P023B, P250 and P324-A1 for DGS/VCFS/CES (MRC-Holland, Amsterdam, Netherlands) were used. The three kits test 65 loci on 22q11 (8 on the CES region, 37 within the TDR and 20 adjacent distal to the TDR), 2 on 22q13, 7 on 4q, 1 on 7p, 5 on 8p, 2 on 9q, 9 on 10p, 1 on 10q, 6 on 17p, and 2 on 18q, most of them involved in the phenotypes of DGS and VCFS. Data analysis was made against up to five control samples using the MRC Coffalyser v8 and v9 softwares (MRC-Holland) or an in-house Excel spreadsheet.

Genomic DNA was extracted from the patients' peripheral lymphocytes using the QIAamp DNA Blood Midi kit (Qiagen, Valencia, CA). DNA concentration was determined with NanoDrop ND-1000 spectrophotometer and software (NanoDrop Technologies, Berlin, Germany). Pathogenic CNVs were identified by CMA, using a 180 K CGH + SNP (ISCA design, Agilent, Santa Clara, CA) array, as part of the clinical testing for congenital anomalies, neurodevelopmental problems, and abnormal fetal ultrasound. Image was analyzed using CytoGenomics 2.7 software (Agilent Technologies, Santa Clara, CA, United States).

Validation of the microdeletion detected by array CGH was validated by fluorescence in situ hybridization. Fluorescence in situ hybridization (FISH) on metaphase spreads with probes for the DiGeorge critical region (D22S553, D22S942) as well as control probes for a more distal region on 22q13.3 (arylsulfatase A, LSI, ARSA, all from Vysis, Downers Grove, United States)

### Statistical Analysis

We performed one-tailed Chi-square tests and calculated *p* values at the 95% confidence level to determine the differences in proportion of observed cases between male and female patients. The proportion of cytogenetic abnormalities

was expected to be equal (50% each) between males and females. Variables, presented as a percentage normalized to the total number of male or female patients, were compared. Findings with  $p < 0.05$  values were accepted as statistically significant.

## Results

All patients had been referred for diagnostic testing by aCGH as part of standard clinical diagnostic workup. The 22q aberrations were detected in 31/998 patients, giving a prevalence of 3.1%. The patient cohort consisted predominantly of pediatric patients, with ages ranging from 5 days to 42 years, (mean = 9.9 years, median = 5 years). Although gender biases for other susceptibility CNVs such as 16p13.11 have been reported in different studies<sup>9</sup>, the sex ratio here was equivalent for patients (16 females, 15 males). Phenotypic details of the patients were ascertained first from the referral information provided prior to testing, and then by interrogation of patient notes and letters to the referring consultants, requesting detailed clinical information. Details of patients and clinical findings are provided in **Table 2**.

In this study, 18 patients with 22q11.2 (LCR22A-H) deletion, three patients with 22q13.31 deletion, 9 patients with 22q11.2 duplication and one patient with 22q13.31 duplication were identified.

The phenotypes of the cases are summarized in **Table 2**. The clinical phenotype varied among the individuals in this study, although a majority of cases displayed various degrees of developmental delay, ranging from mild to severe, and speech disturbances. Other clinical features present in more than five cases included behavioral problems, hypotonia, and dysmorphic facial features.

## Discussion

In the present study, we reported on the clinical and molecular characterization of 31 individuals with distal deletions and duplications of chromosome 22q. We detected 22q11.2 duplications in 9 patients and 22q13.31 duplications in one patient. Among the 998 patients tested, the estimated frequency of 22q11 and 22q13 duplications were approximately 1,002%. The estimated frequency in our patient population is slightly higher compared with the studies of Coppinger et al, who identified 18 distal duplications among 22,096 patients tested, and Wincent et al, who identified 16 distal duplications among 11,463 patients. Since a patient group with speech delay, brain malformations, and autism spectrum disorders was included in our study, this may have resulted from patient selection.<sup>8-10</sup> There is no standard procedure for screening for duplication in 22q11.2, because these patients show different clinical manifestations, only some of which are compatible with 22q11.2 deletion syndrome, usually in a milder phenotype.<sup>11-14</sup> Because the entire clinical spectrum is still unknown and most of these individuals overlap with normality, finding correlations of the sizes and positions of these duplications and phenotype is more difficult than deletions.<sup>12,13</sup>

Deletions at 22q11.2 had a standard 3 Mb deletion in 87% of cases, a smaller, proximally nested 1.5 Mb deletion in 7% of cases, and other atypical deletions, nested, overlapping, or typically deleted region (TDR) clustered together. By NAHR after asynchronous replication, large low-copy repeats at 22q11,2 (LCR22s A to D) mediate repetitive deletions, while smaller LCRs (E-H) alongside recently described uncommon deletions or alternate breakpoints.<sup>6,15-18</sup>

In this article, we present nine patients referred to us for genetic diagnosis of 22q11.2 deletion syndrome. We discuss screening diagnostic strategies for patients referred for the 22q11.2 deletion test as well as the clinical implications of these findings for a potential genotype-phenotype correlation.

The chromosome region 22q11.2 has long been recognized as a hotspot for genomic rearrangement and related disorders such as 22q11.2 deletion syndrome (DGS/VCFs, OMIM 188400/OMIM 192430), der(22) t(11; 22) syndrome (OMIM 609029), and cat-eye syndrome (OMIM 115470). Der (22) syndrome and cat eye syndrome are rare conditions characterized by an increased copy number of the most centromeric portion of 22q11, whereas 22q11.2 microdeletions are more common with an estimated frequency of 1 in 4,000 to 6,000 live births.<sup>19,20</sup>

22q11 deletion syndrome is characterized by not only congenital heart defects, immunodeficiency, transient neonatal hypocalcemia, velopharyngeal insufficiency and a distinctive facial appearance but also learning disabilities and behavioral abnormalities. Phenotype varies with involvement of multiple organ systems.<sup>5,21,22</sup> The entire phenotypic spectrum of 22q11.2 deletion syndrome is provided by multiple dose-sensitive genes required for normal development across the 22q11.2 region.<sup>23</sup> Furthermore, nonoverlapping, atypical deletions have significantly overlapping phenotypes, suggesting several candidate genes for the syndrome, a common developmental pathway, or a positional gene effect at 22q11.2.<sup>24-29</sup> It has also been suggested that phenotypes represented by identical deletions at 22q11.2 are altered by parental imprinting, unbalanced regulatory effects, polymorphisms not masked by recessive mutations or hemizygoty, environmental factors, or stochastic events during morphogenesis.<sup>29-32</sup> Susceptibility to other syndromes has also been suggested in patients with the 22q11.2 deletion.<sup>28,33,34</sup> Several studies have identified several candidate genes at 22q11.2 that reproduce part of the phenotype or are suspected to alter disease susceptibility in animal models.<sup>24,25,35,36</sup> Accordingly, correlations made within a contiguous gene syndrome will always be subject to phenotype exclusions.

In the present study, of the 18 patients carrying 22q11.2 (LCR22A-H) deletion, most of the deletions were spread in the region between LCRB and E. The clinical findings of patients with this deletion showed a wide spectrum (**Table 2**). The reason for the wide phenotypic variation is unknown, but possible explanations may be that the 22q11.2 deletion syndrome phenotype may be due to other genetic mutations or that other genes not involved in duplication may compensate or hinder the pathogenesis of duplication. However, a milder phenotype was observed in 22q11 duplication carriers

**Table 2** Molecular details and phenotypic features of individuals with 22q aberrations

Case	Abber.	chr22 band	bp start; stop (NCBI36/hg18)	Seg LCR22 A-H	Size	Origin	Age	Phenotypic features
1	Del	q11.21q11.22	18.894.835-21.440.514	C-D/E	2546kb	De novo	1	Loss of speech, developmental delay
2	Dup	q11.21q12.22	18.894.835-21.809.009	C-D/E	2,914.174kb	De novo	3	Kabuki makeup syndrome
3	Dup	q11.21q12.22	20.402.633-29.789.058	D-H	9386kb	Maternal	10	22q11.21 duplication
4	Dup	q11.21q12.22	20.719.112-29.789.058	D-H	9070kb	De novo	35	22q11.21 duplication?
5	Del	q13.31q13.33	45.988.776- 51.193.680		5205kb	De novo	1	Hypotonia
6	Del	q11.21q11.22	20.659.547-21.440.514	D-E	781kb	De novo	10	Mental retardation
7	Del	q11.21q11.22	18.729.944-21.505.417	B-E	2775kb	Maternal	5	speech disorder + rib cage deformity
8	Del	q11.21q11.22	19.036.998-21.505.417	D-E	2468kb	De novo	3	Postaxial polysyndactyly, hearing loss
9	Dup	q11.22-q11.23	23.258.229-23.648.163	H	390kb	De novo	31	History of four first trimester pregnancy loss
10	Dup	q13.31	48.360.180-50.151.126		1,790.947kb	De novo	3	Flattened nasal root, stuttering, craniosynostosis
11	Dup	q11.21q11.23	18.894.835-21.809.009	B-F	2,148.865kb	De novo	4	Dilated cardiomyopathy
12	Del	q11.2	18.894.835-21.505.417	B-E	2610kb	De novo	8	Developmental delay, intellectual disability
13	Del	q11.21q11.22	18.729.944-21.505.417	B-E	2775kb	De novo	27	Patients' 7 mother
14	Del	q11.2	18.729.944-21.440.514	B-E	2,710.571kb	De novo	1	Tetralogy of Fallot, growth retardation
15	Del	q11.2	22.313.381-22.556.733	F	243kb	De novo	5	Epilepsy, ADHD, fragile X
16	Del	q11.1-q11.21	17.084.955-19.659.894	A-C	2,574.94kb	De novo	13	Developmental delay, intellectual disability
17	Del	q11.21	20.719.112-21.440.514	E	721kb	De novo	13	Short stature, Williams syndrome
18	Del	q11.21	18.729.944-21.505.417	B-E	2,775.474kb	De novo	14	Tetralogy of Fallot, growth retardation, intellectual disability
19	Del	q11.21	18.628.019-21.440.514	B-E	2812kb	De novo	1	Operated ASD, VSD, aortic transposition
20	Del	q11.21	18.661.724-21.505.417	B-E	2,843.694kb	De novo	6	Mild intellectual disability, ADHD
21	Dup	q11.21	20.719.112-21.505.417	D-E	786.306kb	De novo	42	22q11.21 duplication
22	Dup	q11.21	18.661.724-21.809.009	B-F	3,147.286kb	De novo	5 months	Anal atresia, balanced translocation?
23	Dup	q11.1q11.23	16.133.474-21.505.417	A-E	5,371.944kb	De novo	27	Anal atresia, dysmorphic findings (+), hearing loss
24	Del	q11.1-q11.21	17.058.946-19.659.894	A-D	2,600.949	De novo	13	Speech and learning difficulties (twin sister of patient 16)
25	Del	q11.21	18.729.944-21.440.514	B-E	2,710.571kb	De novo	10	Operated tetralogy of Fallot, gait disturbance
26	Dup	q11.21	18.894.835-20.279.820	B-D	1,384.986kb	De novo	2	Strabismus, frontal bossing, flat nasal root, flat philtrum, thin lips, epilepsy
27	Del	q13.31-q13.33	21.440.514-51.224.252	E-...	6,670.17kb	De novo	2 months	Severe hypotonia

Table 2 (Continued)

Case	Abber.	chr22 band	bp start; stop (NCBI36/hg18)	Seg LCR22 A-H	Size	Origin	Age	Phenotypic features
28	Del	q11.21	18.729.944–21.505.417	B-E	2,775.474kb	De novo	3 months	Pes equinovarus, anterior fontanelle closed, overlapping on toes
29	Del	q11.21	18.661.724–21.440.514	B-E	2,778.791kb	De novo	3	Neuromotor developmental delay
30	Del	q13.2-q13.33	43.572.90–51.224.252		7,651,344kb	De novo	1	Motor retardation
31	Del	q11.21	18.894.835–21.440.514	B-E	2,545.68kb	De novo	A month	Hypotonia, epilepsy, anteriorly located anus

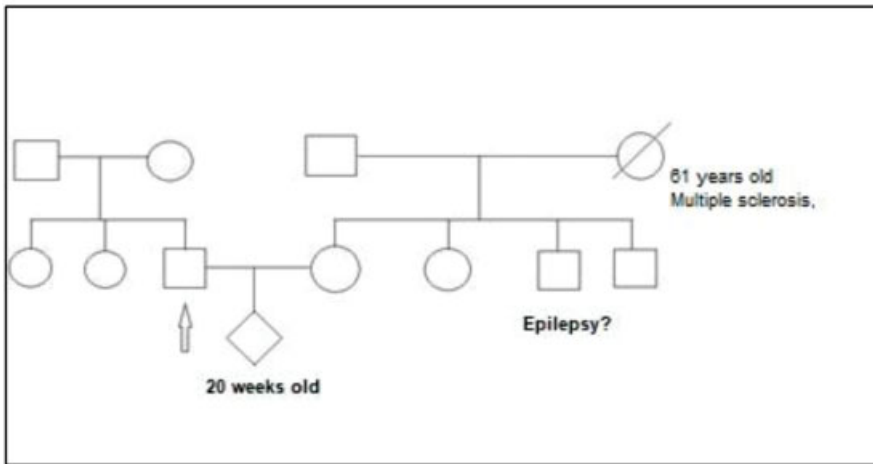
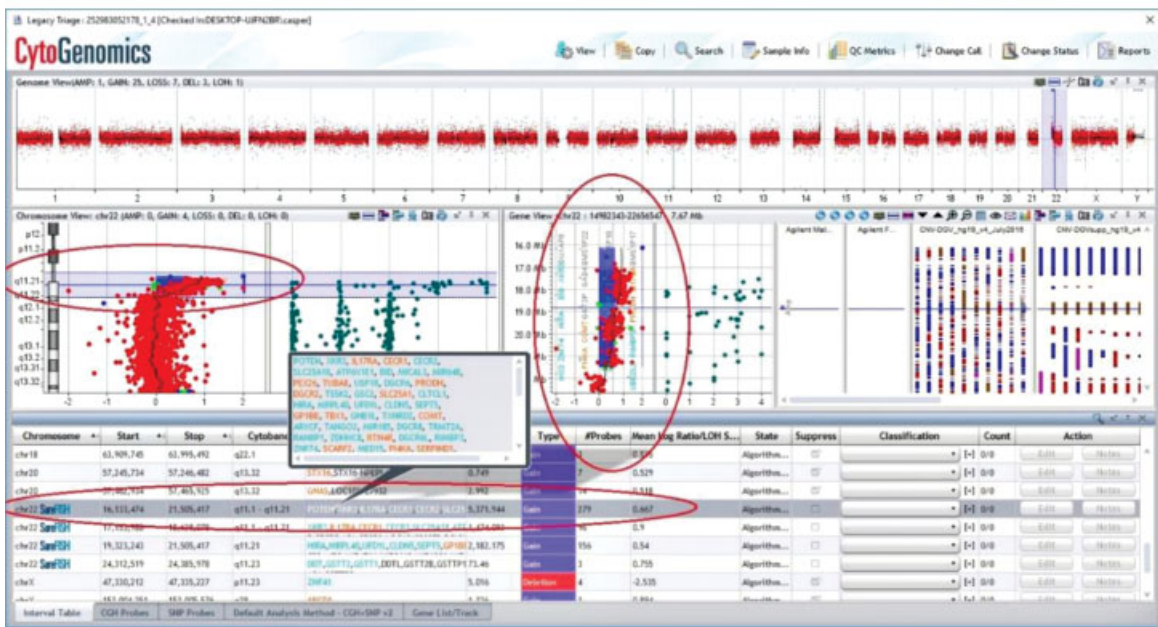
Abbreviations: ADHD, attention deficit hyperactivity disorder; ASD, atrial septal defect; VSD, ventral septal defect.

(► Fig. 2). Duplication of chromosome 22q11 is also characterized by highly variable features, which may range from normal to mild and may include intellectual disability or learning disabilities, growth retardation, hypotonia, and delayed psychomotor development.<sup>37,38</sup> The most frequently reported symptoms in the 22q11.2 duplication syndrome are mental retardation/learning difficulties (cognitive deficits such as deficits of memory performance, perceptual organization and verbal comprehension, ADHD and speech impairment) (97%), delayed psychomotor development (67%), growth retardation (63%), and muscular hypotonia (43%). The most common dysmorphic features detected are hypertelorism (70%), broad flat nose (53%), micrognathia (52%), velopharyngeal insufficiency (48%), dysplastic ears (45%), epicanthal folds (42%), and downslanting palpebral fissures (41%). Other reported symptoms are congenital heart malformation, visual and hearing impairment, seizures, microcephaly, ptosis, and urogenital abnormalities.<sup>14</sup>

In our patient group, changes covering the 22q13 band region (3 deletions and 1 duplication) were detected in four of our patients (► Table 2). Clinical findings in our patients with deletion including 22q13.33 region are hypotonia and motor retardation. This region has been associated with Phelan–McDermid syndrome (PMS) (phenotype MIM number: 606232) in the literature. PMS is a developmental disorder with variable features. Common features include neonatal hypotonia, global developmental delay, normal to accelerated growth, absent to severely delayed speech, autistic behavior, and minor dysmorphic features. The responsible gene SHANK3 is located in this region.<sup>39–41</sup> Duplication was detected in 22q13.33 region in one of our patients. A 3-year-old patient had clinical findings of flattened nasal root, stuttering, and craniosynostosis (► Table 2). In duplication, it included the SHANK3 gene as in deletions of the same region. On the basis of the phenotype of SHANK3-overexpressing mice, Han et al hypothesized that SHANK3 overexpression may have a role in hyperkinetic neuropsychiatric disorders in humans.<sup>42</sup> Duplication of the 22q13 region is included in the literature as chromosome 22q13 duplication syndrome (phenotype MIM number: 615538).

A larger deletion was detected in the 22q13.2q13.33 region of approximately 7.5 Mb in one of our patients. Although the deletion of the patient corresponded to the PMS syndrome region, it was observed that it spreads beyond this area. For instance, neonatal hypotonia and late walking were reported in 20% of those with deletions of just 22q13.33, yet were reported for more than 90% of those with the largest deletions (22q13.2). The traditional approach would ignore the difference in frequency and identify 22q13.33 as being the only candidate region.<sup>43</sup> Isolated motor retardation was found in the clinical findings of our patient.

The current study demonstrated in the largest postnatal case series reporting the whole spectrum of atypical phenotypic and genotypic variations at 22q. The knowledge regarding the distribution of findings within and associated with various organ systems may enable a rapid and precise diagnostic process. We believe that when all the phenotypic



**Fig. 2** Photographs of patient no 23 carrying an approximately 5.3 Mb 22q11.1q11.23 duplication (A), a-CGH image of case (B), pedigree of family (C).

differences are taken into account, various anomalies including developmental delay and intellectual disability might be considered as an indication to search for aberrations of 22q along with congenital heart diseases. All of this data will contribute to the establishment of the true prevalence of these anomalies and defects, and reveal the importance of the multidisciplinary counseling and the contribution of this condition to positive outcomes.

#### Funding

None.

#### Conflict of Interest

None declared.

#### Acknowledgments

We would like to thank the patient's family for their cooperation and consent to publish clinical reports and imaging.

#### References

- Cole CG, McCann OT, Collins JE, et al. Finishing the finished human chromosome 22 sequence. *Genome Biol* 2008;9(05):R78
- Dunham I, Shimizu N, Roe BA, et al. The DNA sequence of human chromosome 22. *Nature* 1999;402(6761):489–495
- Yu S, Graf WD, Shprintzen RJ. Genomic disorders on chromosome 22. *Curr Opin Pediatr* 2012;24(06):665–671
- Robin NH, Shprintzen RJ. Defining the clinical spectrum of deletion 22q11.2. *J Pediatr* 2005;147(01):90–96
- Yu S, Graf WD, Ramalingam A, et al. Identification of copy number variants on human chromosome 22 in patients with a variety of clinical findings. *Cytogenet Genome Res* 2011;134(04):260–268
- Shaikh TH, O'Connor RJ, Pierpont ME, et al. Low copy repeats mediate distal chromosome 22q11.2 deletions: sequence analysis predicts breakpoint mechanisms. *Genome Res* 2007;17(04):482–491
- Ben-Shachar S, Ou Z, Shaw CA, et al. 22q11.2 distal deletion: a recurrent genomic disorder distinct from DiGeorge syndrome and velocardiofacial syndrome. *Am J Hum Genet* 2008;82(01):214–221
- Coppinger J, McDonald-McGinn D, Zackai E, et al. Identification of familial and de novo microduplications of 22q11.21–q11.23 distal to the 22q11.21 microdeletion syndrome region. *Hum Mol Genet* 2009;18(08):1377–1383
- Tropeano M, Ahn JW, Dobson RJ, et al. Male-biased autosomal effect of 16p13.11 copy number variation in neurodevelopmental disorders. *PLoS One* 2013;8(04):e61365
- Wincent J, Bruno DL, van Bon BW, et al. Sixteen new cases contributing to the characterization of patients with distal 22q11.2 microduplications. *Mol Syndromol* 2010;1(05):246–254
- Ensenauer RE, Adeyinka A, Flynn HC, et al. Microduplication 22q11.2, an emerging syndrome: clinical, cytogenetic, and molecular analysis of thirteen patients. *Am J Hum Genet* 2003;73(05):1027–1040
- Courtens W, Schramme I, Laridon A. Microduplication 22q11.2: a benign polymorphism or a syndrome with a very large clinical variability and reduced penetrance?—Report of two families *Am J Med Genet A* 2008;146A(06):758–763
- Ou Z, Berg JS, Yonath H, et al. Microduplications of 22q11.2 are frequently inherited and are associated with variable phenotypes. *Genet Med* 2008;10(04):267–277
- Wentzel C, Fernström M, Öhrner Y, Annerén G, Thuresson AC. Clinical variability of the 22q11.2 duplication syndrome. *Eur J Med Genet* 2008;51(06):501–510
- Saitta SC, Harris SE, Gaeth AP, et al. Aberrant interchromosomal exchanges are the predominant cause of the 22q11.2 deletion. *Hum Mol Genet* 2004;13(04):417–428
- Shaikh TH, Kurahashi H, Saitta SC, et al. Chromosome 22-specific low copy repeats and the 22q11.2 deletion syndrome: genomic organization and deletion endpoint analysis. *Hum Mol Genet* 2000;9(04):489–501
- Baumer A, Riegel M, Schinzel A. Non-random asynchronous replication at 22q11.2 favours unequal meiotic crossovers leading to the human 22q11.2 deletion. *J Med Genet* 2004;41(06):413–420
- Kurahashi H, Tsuda E, Kohama R, et al. Another critical region for deletion of 22q11: a study of 100 patients. *Am J Med Genet* 1997;72(02):180–185
- Botto LD, May K, Fernhoff PM, et al. A population-based study of the 22q11.2 deletion: phenotype, incidence, and contribution to major birth defects in the population. *Pediatrics* 2003;112(Pt 1):101–107
- Yamagishi H. The 22q11.2 deletion syndrome. *Keio J Med* 2002;51(02):77–88
- Shprintzen RJ, Goldberg RB, Young D, Wolford L. The velo-cardio-facial syndrome: a clinical and genetic analysis. *Pediatrics* 1981;67(02):167–172
- Scambler PJ, Kelly D, Lindsay E, et al. Velo-cardio-facial syndrome associated with chromosome 22 deletions encompassing the DiGeorge locus. *Lancet* 1992;339(8802):1138–1139
- Lindsay EA. Chromosomal microdeletions: dissecting del22q11 syndrome. *Nat Rev Genet* 2001;2(11):858–868
- Yamagishi H, Garg V, Matsuoka R, Thomas T, Srivastava D. A molecular pathway revealing a genetic basis for human cardiac and craniofacial defects. *Science* 1999;283(5405):1158–1161
- McQuade L, Christodoulou J, Budarf M, et al. Patient with a 22q11.2 deletion with no overlap of the minimal DiGeorge syndrome critical region (MDGCR). *Am J Med Genet* 1999;86(01):27–33
- Saitta SC, McGrath JM, Mensch H, Shaikh TH, Zackai EH, Emanuel BSA. A 22q11.2 deletion that excludes UFD1L and CDC45L in a patient with conotruncal and craniofacial defects. *Am J Hum Genet* 1999;65(02):562–566
- Sutherland HF, Wadey R, McKie JM, et al. Identification of a novel transcript disrupted by a balanced translocation associated with DiGeorge syndrome. *Am J Hum Genet* 1996;59(01):23–31
- Rauch A, Pfeiffer RA, Leipold G, Singer H, Tigges M, Hofbeck M. A novel 22q11.2 microdeletion in DiGeorge syndrome. *Am J Hum Genet* 1999;64(02):659–666
- Dallapiccola B, Pizzuti A, Novelli G. How many breaks do we need to CATCH on 22q11? *Am J Hum Genet* 1996;59(01):7–11
- Hall JG. CATCH 22. *J Med Genet* 1993;30(10):801–802
- Kurnit DM, Layton WM, Matthyse S. Genetics, chance, and morphogenesis. *Am J Hum Genet* 1987;41(06):979–995
- Amati F, Conti E, Novelli A, et al. Atypical deletions suggest five 22q11.2 critical regions related to the DiGeorge/velo-cardio-facial syndrome. *Eur J Hum Genet* 1999;7(08):903–909
- Digilio MC, Marino B, Capolino R, et al. Familial recurrence of nonsyndromic congenital heart defects in first degree relatives of patients with deletion 22q11.2. *Am J Med Genet A* 2005;134A(02):158–164
- Heine-Suñer D, Armengol L, Torres-Juan L, et al. Clinical and molecular characterization of deletions, duplications and mutations in the 22q11.2 region. [abstract] *Eur J Hum Genet* 2008;16 (Suppl 2):x
- Guris DL, Fantes J, Tara D, Druker BJ, Imamoto A. Mice lacking the homologue of the human 22q11.2 gene CRKL phenocopy neuro-cristopathies of DiGeorge syndrome. *Nat Genet* 2001;27(03):293–298
- Vorstman JAS, Chow EW, Ophoff RA, et al. Association of the PIK4CA schizophrenia-susceptibility gene in adults with the 22q11.2 deletion syndrome. *Am J Med Genet B Neuropsychiatr Genet* 2009;150B(03):430–433



- 37 Guy C, Wang X, Lu X, Lu J, Li S. Two patients with small chromosome 22q11.21 alterations and central nervous system abnormalities. *Mol Cytogenet* 2015;8:102
- 38 Firth HV. 22q11.2 duplication – retired chapter, for historical reference only. In: Adam MP, Ardinger HH, Pagon RA, et al, eds. *GeneReviews*. Seattle: University of Washington; 2009
- 39 Precht KS, Lese CM, Spiro RP, et al. Two 22q telomere deletions serendipitously detected by FISH. *J Med Genet* 1998;35(11):939–942
- 40 Durand CM, Betancur C, Boeckers TM, et al. Mutations in the gene encoding the synaptic scaffolding protein SHANK3 are associated with autism spectrum disorders. *Nat Genet* 2007;39(01):25–27
- 41 Prasad C, Prasad AN, Chodirker BN, et al. Genetic evaluation of pervasive developmental disorders: the terminal 22q13 deletion syndrome may represent a recognizable phenotype. *Clin Genet* 2000;57(02):103–109
- 42 Han K, Holder JL Jr, Schaaf CP, et al. SHANK3 overexpression causes manic-like behaviour with unique pharmacogenetic properties. *Nature* 2013;503(7474):72–77
- 43 Sarasua SM, Dwivedi A, Boccutto L, et al. 22q13.2q13.32 genomic regions associated with severity of speech delay, developmental delay, and physical features in Phelan-McDermid syndrome. *Genet Med* 2014;16(04):318–328