

**Keywords:** breast cancer; oestrogen receptor; progesterone receptor; endocrine therapy; combined endocrine receptor

# The combined endocrine receptor in breast cancer, a novel approach to traditional hormone receptor interpretation and a better discriminator of outcome than ER and PR alone

Esther J Campbell<sup>\*,1,2</sup>, Mathias Tesson<sup>2</sup>, Flora Doogan<sup>1</sup>, Zahra MA Mohammed<sup>2,3</sup>, Elizabeth Mallon<sup>4</sup> and Joanne Edwards<sup>2</sup>

<sup>1</sup>Department of Surgery, Queen Elizabeth University Hospital, Glasgow G51 4TF, UK; <sup>2</sup>Institute of Cancer Sciences, University of Glasgow, Wolfson Wohl Translational Cancer Research Centre, Gartcube Estate, Glasgow G61 1HQ, UK; <sup>3</sup>Academic Unit of Colorectal Surgery, School of Medicine, University of Glasgow, Glasgow Royal Infirmary, Glasgow G4 0ET, UK and <sup>4</sup>Department of Pathology, Queen Elizabeth University Hospital, Glasgow G51 4TF, UK

**Background:** The functional role of progesterone receptor (PR) signalling was previously unclear and PR testing in breast cancer is controversial. Recent defining work has highlighted the functional crosstalk that exists between the oestrogen receptor (ER) and PR. The purpose of this retrospective cohort study was to compare the prognostic value of the combined ER and PR score with either ER or PR alone.

**Methods:** Tumour Allred ER and PR scores were reclassified as negative, low and high. The combined endocrine receptor (CER) was calculated as the average of the reclassified ER and PR scores, resulting in three groups: CER negative, impaired and high. Cox proportional hazards models were used to estimate disease-free survival (DFS) and breast cancer-specific survival (BCSS).

**Results:** The CER was a more powerful predictor of 5-year DFS and BCSS than either ER or PR alone. In multivariate analysis that included ER, PR and CER, only CER remained an independent prognostic variable for 5-year DFS (hazard ratio (HR) 0.393; CI: 0.283–0.548,  $P=0.00001$ ) and BCSS (HR 0.553; CI: 0.423–0.722;  $P=2.506 \times 10^{-8}$ ). In ER-positive (ER+) patients impaired CER was an independent marker of poor outcome for 5-year DFS (HR 2.469; CI: 1.049–5.810;  $P=0.038$ ) and BCSS (HR 1.946; CI: 1.054–3.596;  $P=0.033$ ) in multivariate analysis that included grade, lymph node, tumour size, HER2 status and PR status. The results were validated in a separate cohort of patients.

**Conclusions:** Combined endocrine receptor is a more powerful discriminator of patient outcome than either ER or PR alone. Economical and simple, it can identify risk in ER+ early breast cancer and potentially be used for adjuvant cytotoxic chemotherapy decision-making.

Worldwide breast cancer is the most frequently diagnosed cancer in woman. The majority, ~70%, express the oestrogen receptor (ER). Oestrogen receptor-positive (ER+) disease has historically been perceived as the 'lesser of two evils', yet many women with

ER+ breast cancer still succumb to their disease. Breast cancer is responsible for over 10 000 deaths each year in the United Kingdom (<http://www.cancerresearchuk.org>) and remains the leading cause of cancer deaths among females in less developed

\*Correspondence: Dr EJ Campbell; E-mail: [esther.campbell@ggc.scot.nhs.uk](mailto:esther.campbell@ggc.scot.nhs.uk)

Received 20 April 2016; revised 26 May 2016; accepted 7 June 2016; published online 22 September 2016

© 2016 Cancer Research UK. All rights reserved 0007–0920/16

countries (Torre *et al*, 2015). The advent of gene expressing profiling and multiparametric assays has brought to the fore that ER+ breast cancer is a heterogeneous disease and highlights the importance of targeted individual treatment selection (Paik *et al*, 2006; Dowsett *et al*, 2010). For most of the world, these validated methods to stratify risk and guide treatment decisions are too expensive and subsequently not routinely available. As recognised by the St Gallen conference, surrogate markers or less expensive pathology tests may provide valuable information in such countries (Coates *et al*, 2015).

Semiquantitative immunohistochemistry (IHC) is a near-universal method of tumour hormone receptor (ER and progesterone receptor, PR) testing. Tumour ER expression is a powerful predictor of response to endocrine therapy and its value is undisputed. Until recently, the biological role of PR was less well defined and it was considered a biomarker of ER function (Horwitz and McGuire, 1975). Oestrogen receptor-positive/progesterone receptor-positive (PR+) tumours are associated with better clinical outcome (Viale *et al*, 2007; Blows *et al*, 2010; Purdie *et al*, 2014); however, the underlying mechanism responsible for this was poorly understood. Recent, defining work has now elucidated that PR redirects where ER binds to chromatin and acts as a proliferative brake in ER+ breast cancer (Mohammed *et al*, 2015). This highlights the role of functional crosstalk between both the ER and PR (Mohammed *et al*, 2015) and underlines the value of both ER and PR testing in breast cancer.

In this study, we hypothesised that semiquantitative IHC ER and PR scores together may represent a surrogate 'snap shot' of functional hormone receptor crosstalk. We therefore analysed the ER and PR together as a combined endocrine receptor (CER) to test if this would be more informative of outcome than either factor independently. We report that the CER is a better predictor of outcome than either the ER or PR, and the CER is an independent significant prognostic factor. The results were validated in a separate cohort of breast cancer patients.

## PATIENTS AND METHODS

**Derivation study patient population.** One thousand seven hundred and eleven female patients were diagnosed with primary operable invasive breast cancer (symptomatic and screen detected) between October 1995 and September 1998 in Greater Glasgow NHS hospitals. The Greater Glasgow Breast Cancer (GGBC) database contains pathological, treatment and follow-up details for these patients. Original pathology report included % tumour cells staining for ER. Progesterone receptor was not routinely tested during this period. Tumour samples were centrally reanalysed for 557 patients, randomly selected from the 1711 patients (33%) (Supplementary Figure 1A). All patients in this cohort received tamoxifen monotherapy for 5 years except for two whose prescribed endocrine agent was not documented as they were enrolled in the ATAC study. The Research Ethics Committee of North Glasgow University Hospital approved the collection of patient data and use of human tissue in this study.

**Tissue microarray construction and IHC.** We have previously described the method for the tissue microarray (TMA) construction using formalin-fixed paraffin-embedded tissue, taken at the time of surgical resection (Mohammed *et al*, 2012a, b). Triplicate TMA were constructed to avoid heterogeneity of PR staining (Mohammed *et al*, 2012a). The IHC for ER, PR and HER2 was performed as we described previously (Mohammed *et al*, 2012a, b) applying protocols established in the CPA-accredited diagnostic pathology laboratory, Glasgow Royal Infirmary with appropriate positive and negative controls.

**IHC scoring.** Tumour Allred ER and PR scores were scored as we have previously reported (Mohammed *et al*, 2012a). A cutoff to define receptor positivity for ER and PR was an Allred score  $\geq 3$ , the internationally accepted cutoff. High scores were defined as Allred 6–

8, and low scores as Allred 3–5. Representative examples of ER and PR staining for each scoring category are shown in Supplementary Figure 2. Human epidermal growth factor receptor 2 membrane staining was scored as described previously (Mohammed *et al*, 2012b).

**Combined endocrine receptor.** The Allred ER and PR scores were reclassified. A score of 0 was assigned to an Allred score of <3, 1 assigned to Allred scores 3–5 and 2 assigned to Allred scores 6–8. The CER was calculated as the average of the reclassified ER and PR scores. Combined endocrine receptor 0 represents negative endocrine receptor status, CER 0.5–1.5 represents impaired endocrine receptor status (CER impaired) and CER 2 represents high endocrine receptor status (CER high).

**Validation study patient population.** The validation cohort of patients consisted of a consecutive series of new diagnosed early invasive female breast cancer patients presenting at two Greater Glasgow Hospitals between January 2008 and January 2009 (Supplementary Figure 1B). The Caldicott Guardian granted permission for the use of patient data. All patients underwent curative surgery and adjuvant treatment prescriptions as per national guidelines (SIGN, 2007) were discussed at a postoperative multidisciplinary meeting. Oestrogen receptor and PR IHC Allred scores for this cohort were obtained from routine pathology records.

**Follow-up.** Follow-up data was confirmed with the registrar general and patient case records for the derivation study patient population included survival status (alive, death other cause and breast cancer-specific death) and documentation of date and site of recurrence (none, local, regional, distant). For patients who died, the date of death was recorded; all deaths not attributable to breast cancer were censored at the date of death. The primary outcomes in this analysis were time from definitive surgery to breast cancer-specific death and time to recurrence. In addition, early 5-year disease-free survival (DFS) was analysed by censoring events at 5 years. Disease-free survival was defined as alive and well with no documented local, regional or distant breast cancer recurrence or breast cancer-specific death. Accordingly, the end points were breast cancer-specific survival (BCSS) and DFS at 5 years.

The validation study patient population follow-up was confirmed using electronic case records. For every patient, details of definitive surgery date and most recent clinical review date were collected to calculate time to outcome. Clinical review included either breast surgery follow-up clinic or oncology follow-up clinic. For patients who died, the date of death was recorded; all deaths not attributable to breast cancer were censored at the date of death. Patient status at most recent review date was recorded (alive and well, documented local, regional or distant breast cancer recurrence or breast cancer-specific death). The end point was DFS.

**Statistical analysis.** Statistical analysis was carried out using SPSS version 22 (IBM, New York, NY, USA). Univariate survival analysis was performed using Kaplan–Meier method analysed by the log-rank test. Calculation of hazard ratios (HRs) for both univariate and multivariate analysis was performed using Cox's proportional-hazards model; a stepwise backward procedure was used to derive a final model of variables that had a significant independent relationship with patient outcome.

## RESULTS

**Derivation study population.** A total of 1711 patients presented with operable invasive breast cancer from October 1995 to September 1998. Five hundred and fifty-seven patient tumour samples were randomly selected for TMA construction and centrally tested for ER and PR. Male breast cancers were excluded because of their biological heterogeneity. Accurate follow-up data and tumour Allred scores for ER and PR were available for 90%

(*n* = 503) patients. Sixty-three per cent (*n* = 319) were ER + and 42% (*n* = 210) were ER +/PR +. Patient and tumour characteristics are detailed in Table 1. Median follow-up was 12.7 years, 61% (*n* = 305) patients were alive, 20% (*n* = 102) had died as a result of breast cancer and 19% (*n* = 96) had died from other causes. At 5 years, 16% (*n* = 82) had a breast cancer-specific event.

**CER scores (0–2).** Combined endocrine receptor score (0, 0.5, 1, 1.5, 2) survival analysis confirmed the selected cutoffs (Figure 1) defining the classification of negative (CER 0), impaired (CER 0.5–1.5) and high (CER 2). Combined endocrine receptor 0 (HR 6.915; CI: 3.131–15.264; *P* = 0.000002), CER 0.5 (HR 3.418; CI: 1.085–10.771; *P* = 0.036), CER 1 (HR 2.617; CI: 1.044–6.560; *P* = 0.040) and CER 1.5 (HR 3.031; CI: 1.099–8.360; *P* = 0.032) with CER 2 as the indicator category.

**Table 1. Characteristics of the derivation study population**

	Total N (%)	CER <sub>neg</sub> N (%)	CER <sub>imp</sub> N (%)	CER <sub>hi</sub> N (%)
<b>Age (years)</b>				
<50	144 (29)	63 (37)	43 (23)	38 (27)
≥50	359 (71)	109 (63)	146 (77)	104 (73)
<b>Grade</b>				
1	93 (18)	3 (2)	51 (27)	39 (27)
2	217 (43)	33 (19)	108 (57)	76 (53)
3	191 (38)	134 (78)	30 (16)	27 (19)
Unknown	2 (<1)	2 (1)		
<b>Lymph node</b>				
0	287 (57)	95 (55)	109 (58)	83 (58)
1–3	129 (26)	39 (23)	52 (28)	38 (27)
>3	81 (16)	37 (21)	26 (14)	18 (13)
Unknown	6 (1)	1 (<1)	2 (<1)	3 (2)
<b>Size (mm)</b>				
<20	297 (59)	83 (49)	121 (64)	93 (66)
20–50	189 (38)	81 (47)	62 (33)	46 (32)
>50	16 (3)	7 (4)	6 (3)	3 (2)
Unknown	1 (<1)	1 (<1)		
<b>ER Allred score</b>				
<3	184 (37)	172 (100)	12 (6)	
3–5	56 (11)		56 (30)	
6–8	263 (52)		121 (64)	142 (100)
<b>PR Allred score</b>				
<3	281 (56)	172 (100)	109 (58)	
3–5	57 (11)		57 (30)	
6–8	165 (33)		23 (12)	142 (100)
<b>HER2</b>				
Positive	76 (15)	51 (30)	16 (9)	9 (6)
Negative	417 (83)	117 (68)	169 (89)	131 (92)
Unknown	10 (2)	4 (2)	4 (2)	2 (2)
<b>Surgical operation</b>				
Mastectomy	322 (64)	105 (61)	125 (66)	92 (65)
Conservation	181 (36)	67 (39)	64 (34)	50 (35)
<b>Endocrine therapy</b>				
Yes	368 (73)	69 (40)	170 (90)	129 (91)
No	127 (25)	100 (58)	16 (8)	11 (8)
Unknown	8 (2)	3 (2)	3 (2)	2 (1)
<b>Chemotherapy</b>				
Yes	208 (42)	116 (67)	49 (26)	43 (30)
No	292 (58)	55 (32)	138 (73)	99 (70)
Unknown	3 (<1)	1 (<1)	2 (1)	

Abbreviations: CER=combined endocrine receptor; ER=oestrogen receptor; HER2=human epidermal growth factor receptor 2; hi=high; imp=impaired; neg=negative; PR=progesterone receptor. For the derivation population study, patient and tumour characteristics in the column titled 'total' are recategorised according to the CER classification.

**Redistribution of endocrine response using the CER compared with ER.** Of the 319 ER + patients, 263 patients had an Allred ER high (6–8), when the CER was applied, and 46% (*n* = 121) of these patients were reclassified as impaired. In addition, 6% (*n* = 12) of ER – were reclassified as CER impaired (Table 1).

**CER and patient outcome.** The CER classification resulted in a statistically significant difference in both early 5-year DFS and BCSS between negative, impaired and high categories (Figure 2A and D). No statistical difference was demonstrated between ER high and low (Figure 2B and E) or PR – and low (Figure 2C and F).

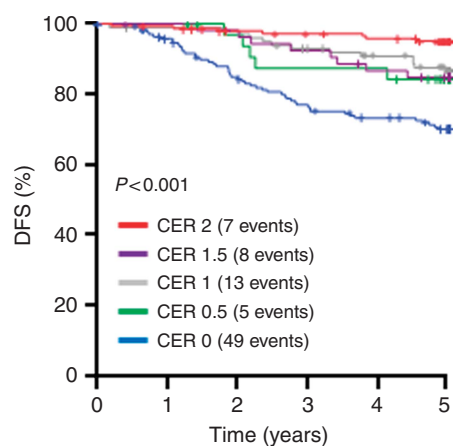
**Multivariate analysis.** Survival analysis confirmed that tumour grade, tumour size and lymph node (LN) (0 nodes positive, 1–3 nodes positive and >3 nodes positive) and HER2 positivity were all predictive of prognosis (data not shown).

The CER was a more powerful predictor of 5-year DFS and BCSS than either the ER or PR alone. In multivariate analysis that included ER, PR and CER, only the CER remained an independent prognostic variable for 5-year DFS (HR 0.393; CI: 0.283–0.548; *P* = 0.00001) and BCSS (HR 0.553; CI: 0.423–0.722; *P* = 2.506 × 10<sup>−8</sup>). In multivariate analysis that included grade, LN, tumour size category and HER2 status, CER impaired and negative were independent prognostic variables with CER high as the indicator category for 5-year DFS (Table 2). In terms of BCSS for the entire cohort, impaired CER was not statistically significant when analysed as a categorical variable (Table 2).

In contrast in subgroup analysis performed in ER + patients (*n* = 319), therefore excluding CER-negative patients, impaired CER was an independent marker of poor outcome for 5-years DFS and BCSS (Table 2) in multivariate analysis that included grade, LN, tumour size, HER2 status and PR status. Importantly, for 5-year DFS, impaired CER was a better predictor of outcome than PR status, tumour size and tumour grade (Table 2).

**Validation study population.** Validation of the prognostic power of the CER was performed in 455 patients diagnosed with early invasive operable breast cancer between January 2008 and January 2009. Patient and tumour characteristics are detailed in Table 3.

There were notable differences between the study cohorts. The validation cohort had fewer patients with ER – breast cancer and



Number at risk	0	1	2	3	4	5
CER 2	142	139	132	129	126	0
CER 1.5	55	54	51	48	44	0
CER 1	102	99	98	90	84	0
CER 0.5	32	31	28	28	25	0
CER 0	172	157	137	123	116	0

**Figure 1. Determination of the cutoffs for the CER.** Kaplan–Meier plots were constructed for all possible CER values 0, 0.5, 1, 1.5 and 2. The outcome is 5-year DFS.

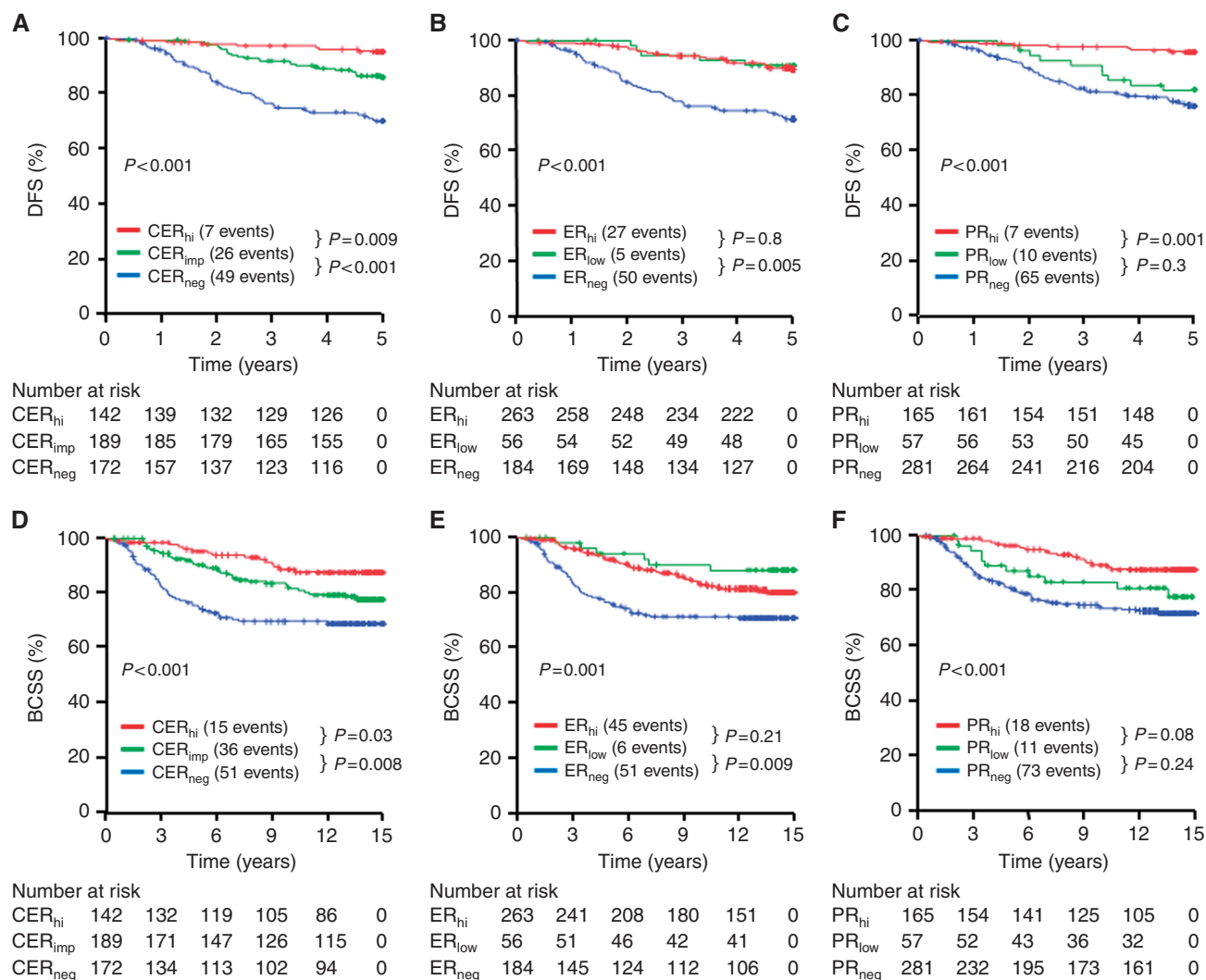


Figure 2. Kaplan–Meier plots in the derivation study. Five-year DFS was plotted according to the CER scores (A), ER scores (B) or PR scores (C). Breast cancer-specific survival at 15 years was plotted according to CER scores (D), ER scores (E) or PR scores (F). Hi = high; imp = impaired; neg = negative.

PR – breast cancer. As expected with a more recent cohort, the majority of HER2+ patients received biological therapy and more patients underwent breast conservation surgery. More patients had LN – disease and were over 50 years at age, presumably as a result of improved breast screening uptake. Almost all (98%) patients with ER+ breast cancer received endocrine treatment.

Median follow-up was 68.25 months (5.7 years). Eighty per cent ( $n = 364$ ) patients were alive and well, 7% ( $n = 31$ ) had died as a result of breast cancer and 9% ( $n = 42$ ) had died from other causes. Four per cent ( $n = 19$ ) were alive with documented evidence of breast cancer recurrence; therefore, 11% ( $n = 50$ ) had a breast cancer-specific event.

Combined endocrine receptor classification in this cohort was associated with highly significant differences in DFS between CER-negative, CER impaired and CER high groups (Figure 3A). There was no significant difference in outcome between ER low and ER – (Figure 3B) or PR low and PR – (Figure 3C). The CER was a more powerful predictor of DFS than either the ER or PR. In multivariate analysis comparing the three factors, the CER classification was independently significant, CER-negative HR 6.416 (CI: 3.129–13.157;  $P = 3.903 \times 10^{-7}$ ) and CER impaired HR 2.627 (CI: 1.327–5.202;  $P = 0.006$ ). In multivariate analysis that included grade, tumour size and LN (HER2 was not included as this was not significantly associated with poor outcome as most

HER2+ patients received biological therapy), the CER was independently significant in the validation cohort, including ER+ subgroup ( $n = 398$ ) (Table 2). The CER was a more powerful predictor of DFS and BCSS than either ER or PR alone. Tumour size, grade and LN were independently significant for DFS as expected when included in multivariate analysis without CER (data not shown).

## DISCUSSION

The CER is economical and an easily reproducible algorithm using well-validated routinely tested biomarkers. In the derivation study for patients with early breast cancer, the CER was observed to be a better predictor of DFS and BCSS than either ER or PR alone. In addition, the CER is independently significant in multivariate analysis when combined with grade, LN status and tumour size. These findings were validated in a separate, modern cohort of early breast cancer patients.

Semiquantitative IHC is the near universal choice of tumour hormone (ER and PR) receptor testing. Despite its widespread use there have been a number of controversies in recent years regarding hormone testing.

Immunohistochemistry is a semiquantitative technique and preanalytical, analytical and postanalytical factors can influence the results and result in test variation (Allred *et al*, 2009). In the derivation study, expression levels of both receptors were centrally tested to avoid testing variation. The validation study used the Allred scores from the pathology reports. The receptor testing had been performed in CPA accredited laboratories and represent 'real-world' data.

Immunohistochemistry assays of ER and PR are limited to determining whether the receptors are present in tumour cells and providing some information on the levels of ER and PR in the tumour. The primary purpose of evaluating the ER and/or PR status for individual patients is to predict whether they will respond to endocrine therapy. For the purposes of selecting endocrine therapy, it is the hormone receptor status that is primarily important. It is notable, however, that 6% of patients of ER – patients were reclassified as CER impaired (ER – /PR +) in the derivation cohort and 1% in the validation cohort, suggesting that the CER categorisation will ensure more patients with

hormone receptor-positive disease will be considered eligible for endocrine treatment.

The categorisation should be clinically useful in the context of guiding adjuvant chemotherapy. Importantly, in both cohorts a substantial number of patients with high Allred ER scores were reclassified as impaired using the CER. There is an open question regarding the importance of quantifying hormone receptor expression level by IHC. Fisher *et al* (2005) compared various methods of scoring ER and PR, involving percentage ranges,

**Table 2. Multivariate Cox analysis for 5-year DFS and BCSS in the derivation and validation cohorts**

	Hazard ratio (CI)	Significance
<b>Derivation cohort</b>		
<b>5-year DFS</b>		
Lymph node	1.895 (1.453–2.472)	<i>P</i> = 0.00005
Grade	1.560 (1.001–2.431)	<i>P</i> = 0.050
Size	1.380 (0.918–2.173)	<i>P</i> = 0.121
CER <sub>neg</sub>	4.441 (1.895–10.411)	<i>P</i> = 0.001
CER <sub>imp</sub>	2.869 (1.240–6.639)	<i>P</i> = 0.014
HER2 +	1.676 (1.004–2.798)	<i>P</i> = 0.048
<b>BCSS</b>		
Lymph node	1.833 (1.428–2.353)	<i>P</i> = 0.000002
Grade	1.504 (1.026–2.203)	<i>P</i> = 0.036
Size	1.711 (1.196–2.448)	<i>P</i> = 0.003
CER <sub>neg</sub>	2.024 (1.065–3.848)	<i>P</i> = 0.031
CER <sub>imp</sub>	1.788 (0.974–3.283)	<i>P</i> = 0.061
HER2 +	1.182 (0.717–1.948)	<i>P</i> = 0.511
<b>5-year DFS in ER + patients</b>		
Lymph node	2.027 (1.281–3.209)	<i>P</i> = 0.003
Grade	1.646 (0.899–3.012)	<i>P</i> = 0.106
Size	1.208 (0.639–2.35)	<i>P</i> = 0.561
CER <sub>imp</sub>	2.469 (1.049–5.810)	<i>P</i> = 0.038
PR <sub>neg</sub>	0.956 (0.409–2.236)	<i>P</i> = 0.917
HER2 +	4.160 (1.803–9.603)	<i>P</i> = 0.001
<b>BCSS ER + patients</b>		
Lymph node	2.070 (1.406–3.049)	<i>P</i> = 0.0002
Grade	1.825 (1.167–2.855)	<i>P</i> = 0.008
Size	1.723 (1.167–2.806)	<i>P</i> = 0.029
CER <sub>imp</sub>	1.946 (1.054–3.596)	<i>P</i> = 0.033
PR <sub>neg</sub>	0.928 (0.464–1.858)	<i>P</i> = 0.833
HER2 +	1.535 (0.644–3.629)	<i>P</i> = 0.329
<b>Validation cohort</b>		
<b>DFS</b>		
Lymph node	1.818 (1.282–2.579)	<i>P</i> = 0.001
Grade	1.266 (0.731–2.192)	<i>P</i> = 0.400
Size	1.416 (0.825–2.428)	<i>P</i> = 0.207
CER <sub>neg</sub>	5.722 (2.727–12.003)	<i>P</i> = 0.000004
CER <sub>imp</sub>	2.431 (1.196–4.941)	<i>P</i> = 0.014
<b>DFS in ER + patients</b>		
Lymph node	2.388 (1.554–3.671)	<i>P</i> = 0.00007
Grade	1.445 (0.805–2.594)	<i>P</i> = 0.218
Size	1.299 (0.680–2.480)	<i>P</i> = 0.428
CER <sub>imp</sub>	2.096 (1.010–4.351)	<i>P</i> = 0.047
PR <sub>neg</sub>	0.763 (0.299–1.948)	<i>P</i> = 0.571

Abbreviations: BCSS = breast cancer-specific survival; CER = combined endocrine receptor; CI = confidence interval; DFS = disease-free survival; ER = oestrogen receptor; HER2 + = human epidermal growth factor receptor 2-positive; imp = impaired; neg = negative; PR = progesterone receptor.

**Table 3. Characteristics of the validation study population**

	Total N (%)	CER <sub>neg</sub> N (%)	CER <sub>imp</sub> N (%)	CER <sub>hi</sub> N (%)
<b>Age (years)</b>				
<50	68 (15)	15 (27)	18 (12)	35 (14)
≥50	387 (85)	40 (73)	130 (88)	217 (86)
<b>Grade</b>				
1	77 (17)		22 (15)	55 (22)
2	209 (46)	5 (9)	66 (45)	138 (55)
3	168 (37)	50 (91)	60 (40)	58 (23)
Unknown	1 (<1)			1 (<1)
<b>Lymph node</b>				
0	311 (68)	36 (66)	94 (64)	181 (72)
1–3	97 (21)	11 (20)	31 (21)	55 (22)
>3	46 (10)	8 (14)	23 (15)	15 (6)
Unknown	1 (<1)			1 (<1)
<b>Size (mm)</b>				
<20	254 (56)	18 (33)	74 (51)	162 (64)
20–50	176 (39)	35 (64)	61 (41)	80 (32)
>5	13 (3)	2 (3)	8 (5)	3 (1)
Unknown	12 (3)		5 (3)	7 (3)
<b>ER Allred score</b>				
<3	57 (12)	55 (100)	2 (1)	
3–5	21 (5)		21 (14)	
6–8	377 (83)		125 (85)	252 (100)
<b>PR Allred score</b>				
<3	111 (24)	55 (100)	56 (38)	
3–5	90 (20)		90 (61)	
6–8	254 (56)		2 (1)	252 (100)
<b>HER2</b>				
Positive	70 (15)	18 (33)	35 (24)	17 (7)
Negative	382 (84)	37 (67)	111 (75)	234 (93)
Unknown	3 (<1)		2 (1)	1 (<1)
<b>Surgical operation</b>				
Mastectomy	131 (29)	24 (44)	44 (30)	63 (25)
Conservation	324 (72)	31 (56)	104 (70)	189 (75)
<b>Endocrine therapy</b>				
Yes	392 (86)	2 (4)	140 (95)	250 (99)
Tamoxifen	184 (40)		57 (39)	127 (50)
AI	138 (30)	2 (4)	57 (39)	79 (31)
Early switch	46 (10)		14 (9)	32 (12)
Late switch	24 (5)		12 (8)	12 (5)
No	63 (14)	53 (96)	8 (5)	2 (<1)
<b>Chemotherapy</b>				
Yes	166 (37)	40 (73)	59 (40)	67 (27)
No	289 (63)	15 (27)	89 (60)	185 (73)
<b>Biological therapy</b>				
Yes	50 (11)	14 (25)	24 (16)	12 (5)
No	405 (89)	41 (75)	124 (84)	240 (95)

Abbreviations: AI = aromatase inhibitor; CER = combined endocrine receptor; ER = oestrogen receptor; HER2 = human epidermal growth factor receptor 2; hi = high; imp = impaired; neg = negative; PR = progesterone receptor. For the validation population study, patient and tumour characteristics in the column titled 'total' are recategorised according to the CER classification. Patients received endocrine therapy in the form of tamoxifen monotherapy, AI monotherapy, early switch within 5 years AI-tamoxifen or vice versa and extended switch, 5 years on AI switched to tamoxifen or vice versa.

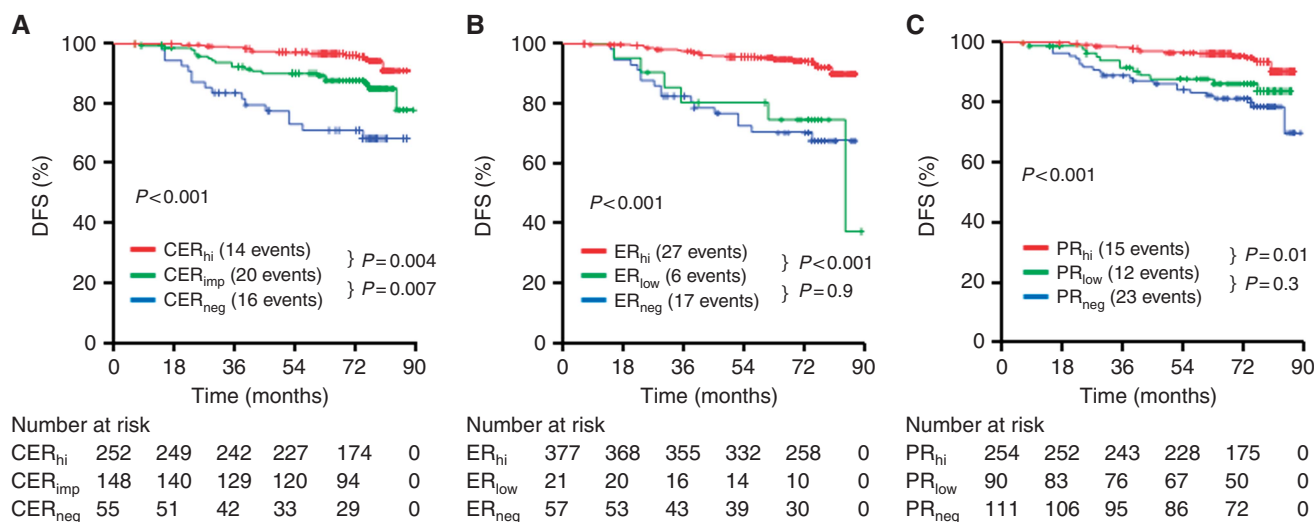


Figure 3. Kaplan-Meier plots in the validation study. Five-year DFS was plotted according to the CER scores (A), ER scores (B) or PR scores (C). Hi = high; imp = impaired; neg = negative.

intensity, both summated and as a product and concluded that the 'any-or-none' method was just as good at prediction and simpler. Certainly within our own study, the level of ER independently when analysed as negative, low and high did not have a linear relationship with outcome. However, when analysed as the combined endocrine receptor, a direct proportional benefit with outcome and level of receptors was identified. Higher amounts of hormone receptor levels as determined by IHC have been associated with improved patient outcomes (Cowen *et al*, 1990; Esteban *et al*, 1994; Barnes *et al*, 1996; Lockwood *et al*, 1999; Elledge *et al*, 2000; Stendahl *et al*, 2006; Yamashita *et al*, 2006; Dowsett *et al*, 2008). These studies suggest that patients with higher ER IHC levels will have a higher probability of good outcome, probably due to good response to endocrine therapy. Our study supports that the level of *both* hormone receptors is important for outcome.

While the predictive power of the ER is undisputed, the predictive power and clinical utility of PR is more controversial (Olivotto *et al*, 2004; Hefti *et al*, 2013). Since 2009 the UK National Institute of Clinical Excellence (NICE) no longer recommends PR measurement in routine pathological assessment of early breast cancer (National Institute for Health and Excellence, 2009). A number of studies have, however, reported the prognostic power of PR (Viale *et al*, 2007; Blows *et al*, 2010; Purdie *et al*, 2014; Mohammed *et al*, 2015). Our results are in keeping with these studies demonstrating improved outcome in ER+/PR+ breast cancer and support the value of PR measurement in breast cancer patients.

The aim of this study was simple, and combining the ER and PR will be more informative in terms of outcome than either independently. Our working hypothesis is that ER and PR should not be considered alone, both are required and semiquantitative IHC ER and PR scores together may represent a surrogate 'snapshot' of functional hormone receptor crosstalk. The importance of ER and PR being functionally linked through complex crosstalk has recently been defined (Mohammed *et al*, 2015). To our knowledge, we are the first study to report a combined ER and PR IHC. This was a retrospective study and relatively small in terms of patient numbers. We would urge for further testing and application in larger cohorts from different centres to validate this score. The cutoffs applied were based on consensus opinion of what is considered high and low receptor expression of ER and PR (Goldhirsch *et al*, 2009), and supported statistically to define the CER categories. Importantly, the cutoffs were robust in the validation cohort.

In conclusion, the CER is a more powerful predictor of patient outcome than either the ER or PR alone and is a simple and economical method to identify risk in ER+ early breast cancer.

## ACKNOWLEDGEMENTS

We are grateful to Prof Donald McMillan, University of Glasgow, Glasgow, United Kingdom and James Mansell for their contribution and support.

## CONFLICT OF INTEREST

The authors declare no conflict of interest.

## REFERENCES

- Allred DC, Carlson RW, Berry DA, Burstein HJ, Edge SB, Goldstein LJ, Gown A, Hammond ME, Iglehart JD, Moench S, Pierce LJ, Ravdin P, Schnitt SJ, Wolff AC (2009) NCCN Task Force Report: estrogen receptor and progesterone receptor testing in breast cancer by immunohistochemistry. *J Natl Compr Canc Netw* 7(Suppl 6): S1-S21; quiz S2-S3.
- Barnes DM, Harris WH, Smith P, Millis RR, Rubens RD (1996) Immunohistochemical determination of oestrogen receptor: comparison of different methods of assessment of staining and correlation with clinical outcome of breast cancer patients. *Br J Cancer* 74(9): 1445-1451.
- Blows FM, Driver KE, Schmidt MK, Broeks A, van Leeuwen FE, Wesseling J, Cheang MC, Gelmon K, Nielsen TO, Blomqvist C, Heikkilä P, Heikkinen T, Nevanlinna H, Akslen LA, Begin LR, Foulkes WD, Couch FJ, Wang X, Cafourek V, Olson JE, Baglietto L, Giles GG, Severi G, McLean CA, Southey MC, Rakha E, Green AR, Ellis IO, Sherman ME, Lissowska J, Anderson WF, Cox A, Cross SS, Reed MW, Provenzano E, Dawson SJ, Dunning AM, Humphreys M, Easton DF, Garcia-Closas M, Caldas C, Pharoah PD, Huntsman D (2010) Subtyping of breast cancer by immunohistochemistry to investigate a relationship between subtype and short and long term survival: a collaborative analysis of data for 10,159 cases from 12 studies. *PLoS Med* 7(5): e1000279.
- Coates AS, Winer EP, Goldhirsch A, Gelber RD, Gnant M, Piccart-Gebhart M, Thurlimann B, Senn HJ (2015) Tailoring therapies-improving the management of early breast cancer: St Gallen International Expert Consensus on the Primary Therapy of Early Breast Cancer 2015. *Ann Oncol* 26(8): 1533-1546.

- Cowen PN, Teasdale J, Jackson P, Reid BJ (1990) Oestrogen receptor in breast cancer: prognostic studies using a new immunohistochemical assay. *Histopathology* **17**(4): 319–325.
- Dowsett M, Allred C, Knox J, Quinn E, Salter J, Wale C, Cuzick J, Houghton J, Williams N, Mallon E, Bishop H, Ellis I, Larsimont D, Sasano H, Carder P, Cussac AL, Knox F, Speirs V, Forbes J, Buzdar A (2008) Relationship between quantitative estrogen and progesterone receptor expression and human epidermal growth factor receptor 2 (HER-2) status with recurrence in the Arimidex, Tamoxifen, Alone or in Combination trial. *J Clin Oncol* **26**(7): 1059–1065.
- Dowsett M, Cuzick J, Wale C, Forbes J, Mallon EA, Salter J, Quinn E, Dunbier A, Baum M, Buzdar A, Howell A, Bugarini R, Baehner FL, Shak S (2010) Prediction of risk of distant recurrence using the 21-gene recurrence score in node-negative and node-positive postmenopausal patients with breast cancer treated with anastrozole or tamoxifen: a TransATAC study. *J Clin Oncol* **28**(11): 1829–1834.
- Elledge RM, Green S, Pugh R, Allred DC, Clark GM, Hill J, Ravdin P, Martino S, Osborne CK (2000) Estrogen receptor (ER) and progesterone receptor (PgR), by ligand-binding assay compared with ER, PgR and pS2, by immunohistochemistry in predicting response to tamoxifen in metastatic breast cancer: a Southwest Oncology Group Study. *Int J Cancer* **89**(2): 111–117.
- Esteban JM, Ahn C, Mehta P, Battifora H (1994) Biologic significance of quantitative estrogen receptor immunohistochemical assay by image analysis in breast cancer. *Am J Clin Pathol* **102**(2): 158–162.
- Fisher ER, Anderson S, Dean S, Dabbs D, Fisher B, Siderits R, Pritchard J, Pereira T, Geyer C, Wolmark N (2005) Solving the dilemma of the immunohistochemical and other methods used for scoring estrogen receptor and progesterone receptor in patients with invasive breast carcinoma. *Cancer* **103**(1): 164–173.
- Goldhirsch A, Ingle JN, Gelber RD, Coates AS, Thurlimann B, Senn HJ (2009) Thresholds for therapies: highlights of the St Gallen International Expert Consensus on the primary therapy of early breast cancer 2009. *Ann Oncol* **20**(8): 1319–1329.
- Hefti MM, Hu R, Knoblauch NW, Collins LC, Haibe-Kains B, Tamimi RM, Beck AH (2013) Estrogen receptor negative/progesterone receptor positive breast cancer is not a reproducible subtype. *Breast Cancer Res* **15**(4): R68.
- Horwitz KB, McGuire WL (1975) Predicting response to endocrine therapy in human breast cancer: a hypothesis. *Science* **189**(4204): 726–727.
- Lockwood CA, Ricciardelli C, Raymond WA, Seshadri R, McCaul K, Horsfall DJ (1999) A simple index using video image analysis to predict disease outcome in primary breast cancer. *Int J Cancer* **84**(3): 203–208.
- Mohammed H, Russell IA, Stark R, Rueda OM, Hickey TE, Tarulli GA, Serandour AA, Birrell SN, Bruna A, Saadi A, Menon S, Hadfield J, Pugh M, Raj GV, Brown GD, D'Santos C, Robinson JL, Silva G, Launchbury R, Perou CM, Stingl J, Caldas C, Tilley WD, Carroll JS (2015) Progesterone receptor modulates ERalpha action in breast cancer. *Nature* **523**(7560): 313–317.
- Mohammed ZM, Edwards J, Orange C, Mallon E, Doughty JC, McMillan DC, Going JJ (2012a) Breast cancer outcomes by steroid hormone receptor status assessed visually and by computer image analysis. *Histopathology* **61**(2): 283–292.
- Mohammed ZM, Going JJ, McMillan DC, Orange C, Mallon E, Doughty JC, Edwards J (2012b) Comparison of visual and automated assessment of HER2 status and their impact on outcome in primary operable invasive ductal breast cancer. *Histopathology* **61**(4): 675–684.
- National Institute for Health and Care Excellence (2009) *CG80 Early and Locally Advanced Breast Cancer: Full Guideline (NICE)*. Published online.
- Olivetto IA, Truong PT, Speers CH, Bernstein V, Allan SJ, Kelly SJ, Lesperance ML (2004) Time to stop progesterone receptor testing in breast cancer management. *J Clin Oncol* **22**(9): 1769–1770.
- Paik S, Tang G, Shak S, Kim C, Baker J, Kim W, Cronin M, Baehner FL, Watson D, Bryant J, Costantino JP, Geyer Jr CE, Wickerham DL, Wolmark N (2006) Gene expression and benefit of chemotherapy in women with node-negative, estrogen receptor-positive breast cancer. *J Clin Oncol* **24**(23): 3726–3734.
- Purdie CA, Quinlan P, Jordan LB, Ashfield A, Ogston S, Dewar JA, Thompson AM (2014) Progesterone receptor expression is an independent prognostic variable in early breast cancer: a population-based study. *Br J Cancer* **110**(3): 565–572. SIGN (2007) S.I.G.N. Management of breast cancer in women (SIGN Guideline No 84), pp 1–52.
- Stendahl M, Ryden L, Nordenskjold B, Jonsson PE, Landberg G, Jirstrom K (2006) High progesterone receptor expression correlates to the effect of adjuvant tamoxifen in premenopausal breast cancer patients. *Clin Cancer Res* **12**(15): 4614–4618.
- Torre LA, Bray F, Siegel RL, Ferlay J, Lortet-Tieulent J, Jemal A (2015) Global cancer statistics, 2012. *CA Cancer J Clin* **65**(2): 87–108.
- Viale G, Regan MM, Maiorano E, Mastropasqua MG, Dell'Orto P, Rasmussen BB, Raffoul J, Neven P, Orosz Z, Braye S, Ohlschlegel C, Thurlimann B, Gelber RD, Castiglione-Gertsch M, Price KN, Goldhirsch A, Gusterson BA, Coates AS (2007) Prognostic and predictive value of centrally reviewed expression of estrogen and progesterone receptors in a randomized trial comparing letrozole and tamoxifen adjuvant therapy for postmenopausal early breast cancer: BIG 1-98. *J Clin Oncol* **25**(25): 3846–3852.
- Yamashita H, Yando Y, Nishio M, Zhang Z, Hamaguchi M, Mita K, Kobayashi S, Fujii Y, Iwase H (2006) Immunohistochemical evaluation of hormone receptor status for predicting response to endocrine therapy in metastatic breast cancer. *Breast Cancer* **13**(1): 74–83.

This work is published under the standard license to publish agreement. After 12 months the work will become freely available and the license terms will switch to a Creative Commons Attribution-NonCommercial-Share Alike 4.0 Unported License.

Supplementary Information accompanies this paper on British Journal of Cancer website (<http://www.nature.com/bjc>)