

# ONECUT2 Accelerates Tumor Proliferation Through Activating *ROCK1* Expression in Gastric Cancer

This article was published in the following Dove Press journal:  
*Cancer Management and Research*

Jie Chen\*  
Jingguai Chen\*  
Bo Sun   
Jianghong Wu  
Chunyan Du 

Department of Gastric Surgery, Fudan University Shanghai Cancer Center, Fudan University, Shanghai 200032, People's Republic of China

\*These authors contributed equally to this work

**Background:** Transcription factors (TFs) are key regulators which control gene expression during cancer initiation and progression. In the current study, we aimed to explore the proliferative function and clinical significance of TFs in gastric cancer (GC).

**Methods:** Differential analysis was used to investigate the overall expression difference between normal and tumor tissues of each TF in TCGA-STAD cohort. The quantitative real-time polymerase chain reaction (qRT-PCR) was performed to confirm the mRNA expression of one cut homeobox 2 (*ONECUT2*) in GC tissues. Western blot analysis was conducted to confirm the protein knockdown efficiency. Cell counting, colony formation, and GC xenograft model assays were performed to confirm the proliferative function of *ONECUT2* in GC cells. Gene set enrichment analysis (GESA) and qRT-PCR were conducted to confirm the affected signaling pathways and downstream targets of *ONECUT2*.

**Results:** Our data indicated that a TF named *ONECUT2* was highly expressed in GC and correlated with patients' poor prognosis. Importantly, knockdown of *ONECUT2* dramatically decreased GC cells proliferation, whereas overexpression of *ONECUT2* promoted carcinogenesis in GC. Kyoto encyclopedia of genes and genomes (KEGG) analysis revealed that the upregulating *ONECUT2* induced the activation of Wnt signaling pathway and cell cycle regulation pathway. We further identified that *ONECUT2* boosted gastric cancer cell proliferation through enhancing *ROCK1* (Rho associated coiled-coil containing protein kinase 1) mRNA expression. High level of *ROCK1* expression rescued proliferative behavior of *ONECUT2*-deficient GC cells.

**Conclusion:** Our findings demonstrated that *ONECUT2* promoted GC cells proliferation through activating *ROCK1* expression at the DNA level, suggesting that *ONECUT2*-*ROCK1* axis might be a potential therapeutic target in GC.

**Keywords:** transcriptional factor, *ONECUT2*, *ROCK1*, gastric cancer, carcinogenesis

## Introduction

Gastric cancer (GC) is one of the most malignant cancers, which is the third leading cause of cancer-related deaths.<sup>1</sup> Due to the limited knowledge on pathogenesis and treatment of gastric cancer, the 5-year overall survival in GC patients remains gloomy. The transcriptional dysregulation and oncogene addiction are the hallmarks of cancer.<sup>2</sup> Importantly, with the extensive exploration using deep sequencing studies in the area of cancer genome, researchers have identified that the differential expression and recurrent somatic mutations of TFs could influence and control cancer status and transform its malignant properties.<sup>3,4</sup> Significantly, targeting these cancer-dependent TFs shows a promising therapeutic effect in many types of tumors.<sup>5</sup>

Correspondence: Chunyan Du; Jianghong Wu  
Department of Gastric Surgery, Fudan University Shanghai Cancer Center, Fudan University, 1205 Rm., 3# Bldg., 270 Dong'an Road, Shanghai 200032, People's Republic of China  
Email [chunyanfudan@126.com](mailto:chunyanfudan@126.com); [elite53@163.com](mailto:elite53@163.com)

Recent evidence has highlighted the crucial roles of TFs in manipulating GC cells proliferation.<sup>6,7</sup> For example, the TEA domain family member 4 (*TEAD4*), a component of Hippo signaling pathway, was highly expressed in GC tissues and positively associated with poor outcomes in GC patients. Knockdown of *TEAD4* significantly decreased the growth of GC cells both in vitro and in vivo.<sup>8</sup> *YAP* and *TAZ*, the key factors of the Hippo signaling pathway, activate gastric cancer initiation through transcriptional and posttranscriptional upregulation of *MYC*.<sup>9</sup> Targeting *YAP1* expression with molecular inhibitors reduced Gal-3-mediated aggressive phenotypes in gastric adenocarcinoma cells, which highlighted the potential therapeutic functions of TFs inhibitors.<sup>10</sup> However, the full oncogenic roles of TFs in gastric cancer still remain unclear.

*ONECUT2* gene belongs to the *ONECUT* family (*ONECUT1*, *ONECUT2*, and *ONECUT3*), and it was firstly identified as a transcriptional factor that stimulates hnf-3beta gene expression and is required for liver differentiation and metabolism.<sup>11</sup> *ONECUT2* couples with *ONECUT1* to mediate horizontal cell development through the control of Pax6 expression.<sup>12</sup> It also regulates pancreas morphogenesis, pancreatic and enteric endocrine differentiation.<sup>13</sup> Recent evidence revealed that *ONECUT2* is a driver of neuroendocrine prostate cancer, which enhances *SMAD3* expression and modulates HIF1 $\alpha$  chromatin-binding, and it is an important master regulator of metastatic castration-resistant prostate cancer.<sup>14</sup> However, the clinical significance and oncogenic role of *ONECUT2* in GC remains to be explored. This study aimed to investigate the relationship between TFs expression and GC cells proliferation. To this end, we examined differentially expressed TF genes in TCGA-STAD cohort and validated their proliferative ability using the CRISPR-Cas9 system in AGS cells.

## Materials and Methods

### Gastric Cancer Samples

The gastric cancer tissues were acquired from the Department of Gastric Surgery, Fudan University Shanghai Cancer Center, Fudan University (Shanghai, China). All the samples were stored in liquid nitrogen and the informed consent has been obtained from all gastric cancer patients.

### Cell Culture

The GC cells MKN-45, AGS, and the human embryonic kidney 293T (HEK-293T) cells were obtained from American Type Culture Collection (ATCC). Human MKN-

45 and AGS cells were cultured in RPMI1640 and HEK-293T cells in DMEM at 37°C with 5% CO<sub>2</sub>. All of the culture medium was supplemented with 10% FBS and 100  $\mu$ g/mL penicillin and streptomycin.

### RNA Interference

To target *ONECUT2* expression, small interfering RNAs (siRNAs) were acquired from RiboBio (Guangzhou, China). The transfection with siRNAs were used Lipofectamine RNAiMAX reagent (Invitrogen) in GC cells. After 24–48 hours, cells were collected for RNA and protein extraction and molecular function validation. The siRNA sequences used for targeting *ONECUT2* are listed in [Supplementary Table S1](#).

### RNA Extraction and Real-Time Quantitative PCR Analysis

RNA was extracted using the RNeasy mini kit (Qiagen). Briefly, cells were lysed with buffer RLT and 70% ethanol was added to the homogenized lysate. Then the sample was transferred to a RNeasy spin column and centrifuged and washed with buffers RW1 and RPE. Next, 50  $\mu$ L of RNase-free water was added to the spin column and centrifuged to collect total RNA. The reverse transcription (RT) reactions were performed using a PrimeScript RT Reagent Kit (TaKaRa, Shiga, Japan). The real-time PCR was done using SYBR Premix Ex Taq II (TaKaRa) and detected using a QuantStudio 7 Flex sequence detection system (Thermo Fisher Scientific). The PCR results were normalized to  $\beta$ -actin with the use of the comparative CT method. Primers to test genes mRNA expression are shown in [Supplementary Table S1](#).

### Lentivirus Preparation and Infection

The GFP, *ONECUT2*, Cas9 overexpression plasmid, and the sgRNA targeting *ONECUT2* coupled with psPAX2 and pMD2.G were transfected into HEK-293T cells with the usage of Lipofectamine 2000 (Invitrogen). After 48–72 hours, lentivirus-containing supernatant was acquired and used to infect the GC cells MKN-45 and AGS.

### Colony Formation Assay

The colony formation assay was performed by seeding 2000 cells per well into 6-well plates, and incubating the plates for 12 days. Then the colonies were fixed with methanol, stained by crystal violet (Sigma-Aldrich), and their number was counted using CCK-8 assay.

## Gastric Cancer Xenograft Model

Animals used in this study were treated humanely using the Guide for the Care and Use of Laboratory Animals of Fudan University and all animal experiments were approved by the Committee on the Ethics and Welfare of Laboratory Animal Science of Fudan University. *ONECUT2* knockdown GC AGS cells and control cells ( $2 \times 10^6$  cells in 200  $\mu$ L of RPMI1640 medium) were subcutaneously injected in the lower back of mice ( $n=6$  each group). Tumor size was measured every 5 days. At the end of 25 days, mice were sacrificed and tumor weight was determined.

## Dual-Luciferase Assay

Dual-Luciferase assay was performed using Dual-Luciferase Reporter Assay (Promega). In brief, GC cells were transfected with either *ONECUT2* mixed siRNAs or negative control siRNA coupled with luciferase plasmids and renilla plasmids in a 24-well plate. After 24 hours, growth media were removed and cells were lysed with PLB buffer. Lysate were transferred into a 96-well plate, the luciferase and renilla substrate were added, and the luminescence was measured.

## ChIP Assay

GC cells were cross-linked, quenched, and sonicated using Bioruptor UCD-200 (Diagenode, Liege, Belgium). Solubilized chromatin was immunoprecipitated with Flag antibody (Sigma) and Dynabeads<sup>®</sup> Protein G (Thermo Fisher Scientific). The beads were washed (500 mM NaCl, 50 mM Tris 7.5, 1% NP40, 0.02% SDS, proteinase inhibitor) and the DNA was collected using MinElute Reaction Cleanup Kit (Qiagen, Hilden, Germany). The sequences of the primers used are listed in [Supplementary Table S1](#).

## Western Blot Analysis

Western blot analysis was done as previously described.<sup>15</sup> The nitrocellulose membrane was incubated with anti-ONECUT2 antibody and then with horseradish peroxidase-conjugated secondary antibodies. The detailed list of antibodies used is provided in [Supplementary Table S2](#).

## Statistical Analysis

We used the R package *limma* to investigate the overall statistical difference between each TFs in TCGA-STAD cohort, The *P*-value under multiple different analysis was adjusted using Benjamini & Hochberg false discovery rate (FDR) methods. The different analysis of quantified

variables was conducted using Student's *t*-test after the normal inspection test. We used the Log rank test to compare the difference between the Kaplan–Meier curves for each TF gene. The univariate and multi-variate prognosis analysis were estimated by uni- and multi-variate Cox proportional hazards regression model. The statistical differences between each of the two qualitative variables were analyzed by Pearson's Chi-squared Test. The R software (<https://www.r-project.org/>) was used to conduct statistical analysis. The two-side statistical analysis with a *P*-value<0.05 was deemed as statistically significant.

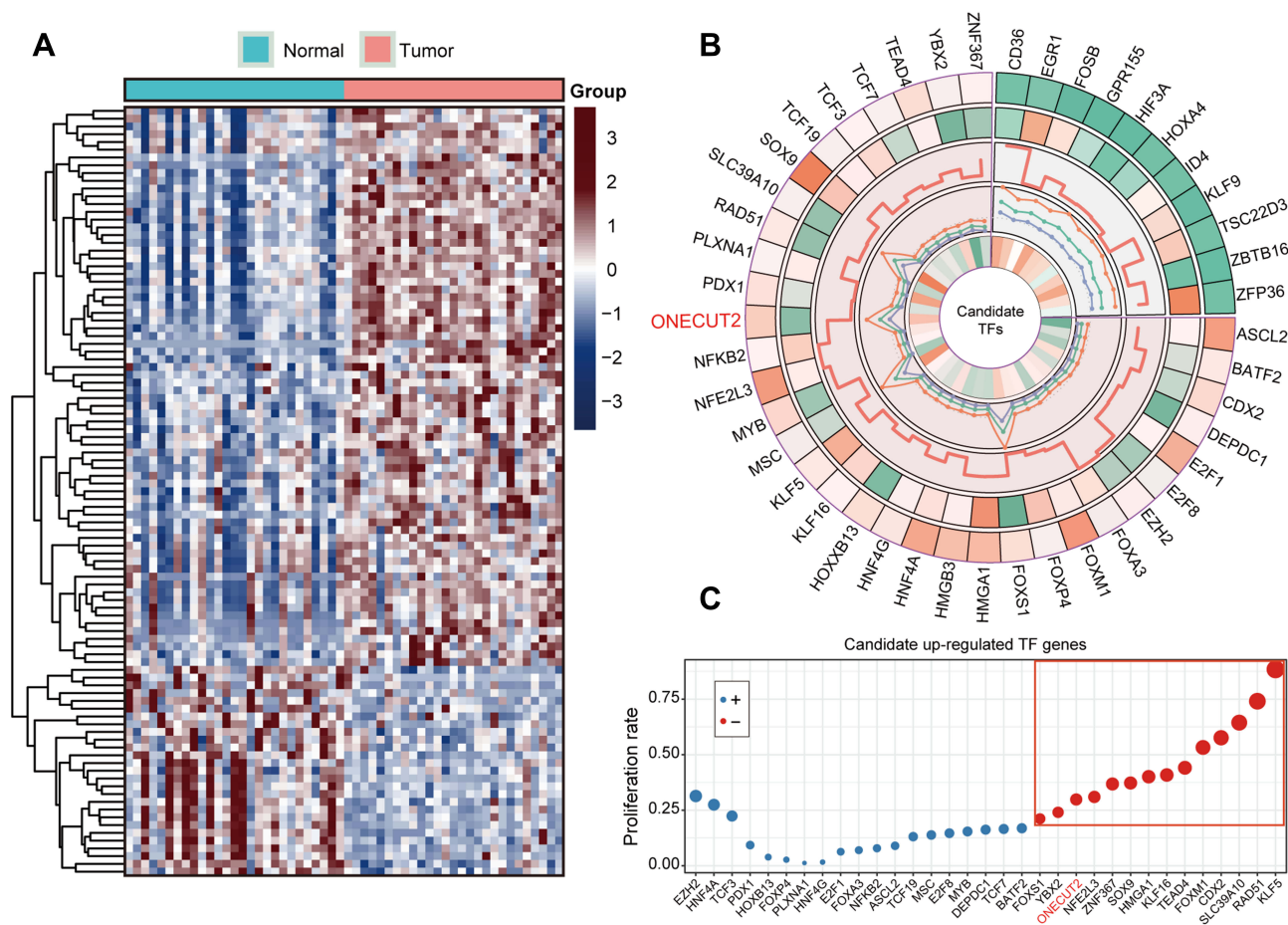
## Results

### Transcription Factors are Differentially Expressed in GC Samples

To explore the differential expression and potential clinical significances of TFs in gastric cancer development and progression, we systematically examined the mRNA expression heterogeneity of TFs in the TCGA-STAD cohort by *limma* package. We discovered that 72 TF genes were highly-expressed in gastric cancer, inversely the 27 TFs were down-regulated in tumor tissues compared with normal tissues (FDR<0.2, fold change>2; [Figure 1A](#)). Moreover, we tested the potential prognosis of TFs using uni- and multi-variate Cox regression analysis. The results identified that 11 down-regulated TF and 34 upregulated TF were significantly correlated with patient overall survival ( $P<0.05$ ; [Figure 1A](#)). Furthermore, we have tested the fold-change in expression levels of candidate-dysregulated TFs using hazard ratio of Cox results, and correlation coefficients of TFs and tumor stage ([Figure 1B](#)). Importantly, we investigated a possible correlation between cell proliferation rate and upregulation of TFs in the AGS cell line. The high *ONECUT2* mRNA expression levels in the tissue of gastric cancer patients was significantly correlated with patient prognosis and carcinogenesis ([Figure 1C](#)). These results demonstrated that a group of TFs was dysregulated in gastric cancer, which was associated with possible biological functions. Among these TF genes, those belonging to the ONECUT family serve as potential oncogenic regulators in gastric cancer tissues.

### ONECUT2 Predicts Poor Patient Prognosis in GC

We further explored the *ONECUT2* differently expressed status in gastric cancer tissues and normal tissues in our selected samples using qRT-PCR on tissues obtained from the patients in our gastric cancer cohort ( $n=116$ ). Consistently, the



**Figure 1** Dysregulated level of TF genes represents patient's prognostic significance in TCGA-STAD cohort. **(A)** Clustered heatmap of the differentially expressed TFs of GC in TCGA-STAD cohort. **(B)** The circular cell systematically indicated selected TF genes in TCGA datasets which were represented by five panels as follows: (1) fold change (tumor/normal tissue); (2) the mean value of selected TF genes; (3) the P-value ( $-\log_{10}$  transfer) of Log rank test for each TFs; (4) hazard ratio value of the univariate-Cox test; and (5) correlation coefficients of the comparison for tumor grade and candidate TFs expression level. **(C)** The proliferation rates of upregulated TF gene candidates in gastric cancer AGS cell line.

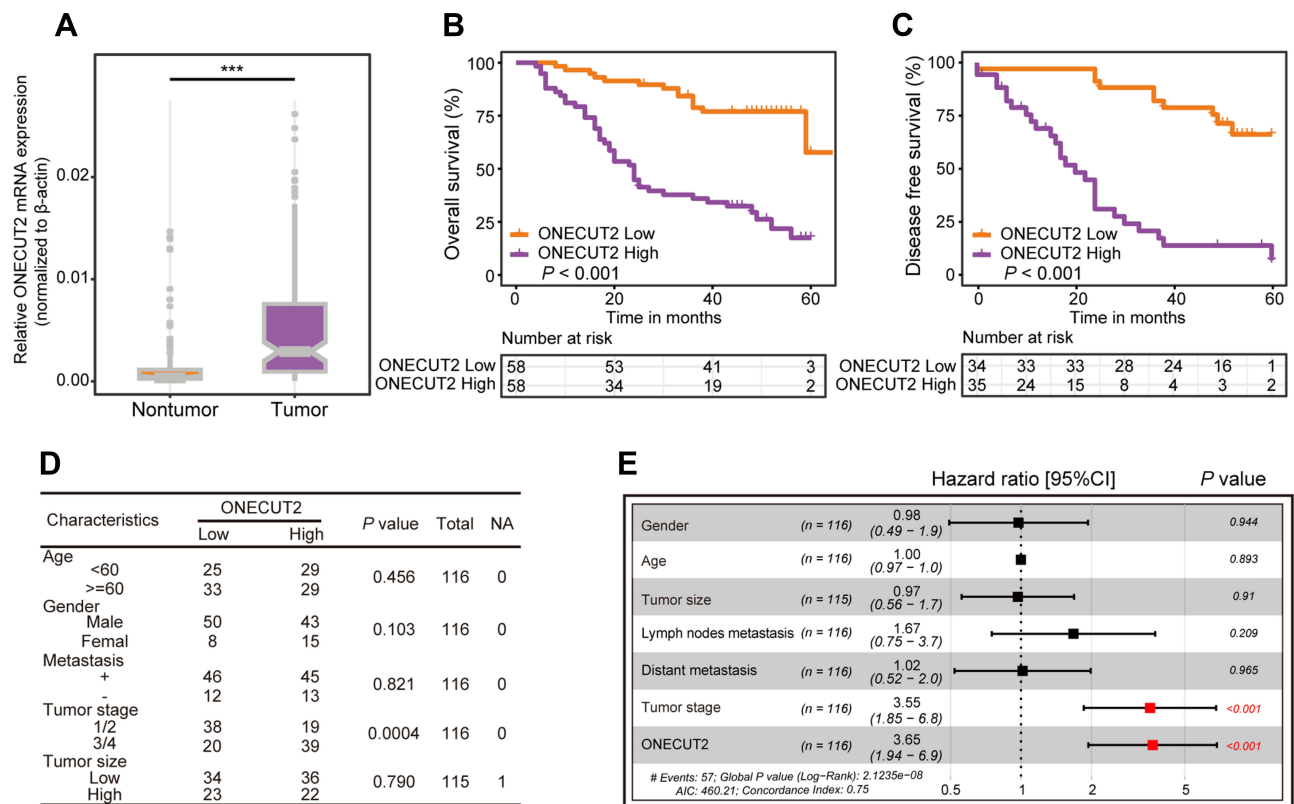
*ONECUT2* was overexpressed in GC samples compared with nontumor tissues (NTs) at the mRNA levels ( $P < 0.001$ ; Figure 2A). The results of Kaplan–Meier analysis showed that GC patients with high *ONECUT2* expression levels had poor survival outcomes, as shown by overall survival (OS,  $P = 0.0009$ ; Figure 2B) and disease-free survival (DFS,  $P = 0.0002$ ; Figure 2C). Additionally, we investigated a possible correlation between clinicopathological features and tumor *ONECUT2* expression in gastric cancer patients (Figure 2D). To further investigate whether high expression level of *ONECUT2* was an independent prognostic factor in our internal gastric cancer patient cohort ( $n = 116$ ), we conducted a multi-variate analysis using the Cox proportional hazard regression model comparing *ONECUT2* expression values with other clinical characteristics as covariables (age, gender, tumor stage, number of distant metastatic status, and tumor size). Gastric cancer patients with high expression level of *ONECUT2* in tumors presented a 3.65-fold high risk of death

( $P < 0.05$ , 95% confidence interval [CI] = 1.94–6.90; Figure 2E). Thus, these results comprehensively indicated that *ONECUT2* can serve as a promising prognostic biomarker in gastric cancer patients.

## *ONECUT2* Enhances GC Cells Proliferation

To verify the proliferative function of *ONECUT2* in gastric cancer cells, we tested the *ONECUT2* mRNA levels in GC cell lines and found *ONECUT2* was highly expressed in AGS, MKN-45, and SNU668 cells, but relatively low to not expressed in SNU484 and MKN-74 cells (Figure 3A). We then employed two small interfering RNAs (siRNAs) that target to *ONECUT2* mRNA in MKN-45 and AGS cells. Western blot analysis showed a strong knockdown efficacy of *ONECUT2* expression (Figure 3B). CCK-8 and colony formation assays revealed that knockdown of *ONECUT2*





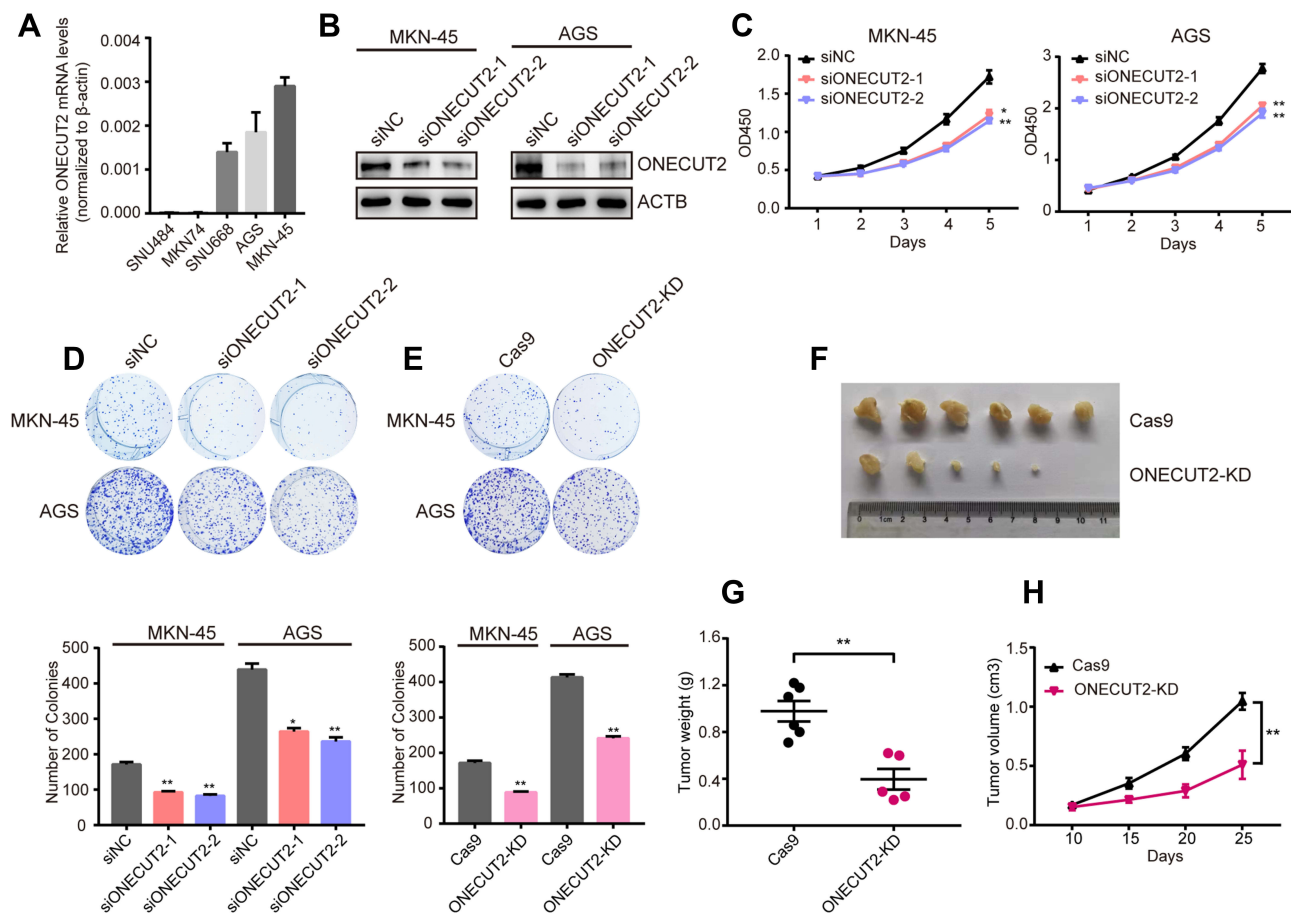
**Figure 2** *ONECUT2* indicates prognosis significance in gastric cancer. **(A)** The differential expression level of *ONECUT2* expressed in our 116 paired STAD tissues. **(B and C)** Kaplan-Meier curves of overall survival **(B)** and disease-free survival **(C)** in our internal gastric patients constructed using *ONECUT2* mRNA expression levels. **(D)** Correlation of clinicopathological features with tumor *ONECUT2* expression level in our internal cohort. **(E)** The integrated table of multi-variate analyses for *ONECUT2* mRNA levels and other clinical factors performed by Cox proportional hazard regression model. \*\*\* $P < 0.001$ .

mRNA levels using siRNAs decreased the proliferation of gastric cancer cells (Figure 3C and D). We also used a lenti-clustered regularly interspaced short palindromic repeats (CRISPR) deletion system to knockdown *ONECUT2* and found similar functional results validated with colony formation assay (Figure 3E). Considering our in vitro results, we tested the in vivo proliferative property of *ONECUT2* in AGS gastric cancer cells, which were infected with *ONECUT2* knockdown sgRNA lentivirus using the CRISPR deletion system and subcutaneously injected into the flanks of 6-week-old nude mice. Strikingly, the knockdown of *ONECUT2* significantly abolished tumorigenicity (Figure 3F), as determined by analyzing tumor weight (Figure 3G) and size (Figure 3H). These findings indicated that *ONECUT2* enhanced gastric cancer cell proliferation both in vitro and in vivo.

## *ONECUT2* Controls *ROCK1* Expression at the DNA Level

To further understand the details of the oncogenic mechanism of *ONECUT2* in gastric cancer, we performed RNA-

sequencing using *ONECUT2* overexpression in AGS cells and found that high expression of *ONECUT2* was positively correlated with the activation of cell cycle regulation and Wnt signaling pathways (Figure 4A and B). To determine the direct downstream targets of *ONECUT2*, we analyzed genes that were correlated the most (top 20), which were enriched in the cell cycle pathway and Wnt signaling pathway, and found that knockdown of *ONECUT2* could decrease sterile alpha motif domain containing 3 (*SAMD3*) and protein kinase C alpha (*PRCKA*) mRNA levels. Of note, the inhibition of *ONECUT2* could significantly abolish Rho associated coiled-coil containing protein kinase 1 (*ROCK1*) mRNA levels (Figure 4C). *ROCK1* encodes a protein serine/threonine kinase, and is activated by the GTP-bound form of Rho to regulate the Wnt signaling pathway. Recent studies revealed that *ROCK1* acts as an oncogene to enhance GC carcinogenesis.<sup>16,17</sup> To further determine the transcriptional regulation of *ROCK1* by *ONECUT2*, we performed ChIP-qPCR and found *ONECUT2* protein was enriched on *ROCK1* promoter region (Figure 4D). Dual-luciferase assay also identified



**Figure 3** *ONECUT2* expression increases gastric cancer cell proliferation. (A) The *ONECUT2* mRNA levels in GC cell lines. (B) Immunoblotting for *ONECUT2* protein in MKN-45 and AGS cells transfected with either *ONECUT2* siRNAs or a negative control (NC) siRNA. (C and D) Cell Counting Kit-8 assay (C), colony formation assays (D) for MKN-45 and AGS cells transfected with either *ONECUT2* siRNAs or a negative control siRNA. (E) Colony formation assays in MKN-45 and AGS cells infected with either *ONECUT2* knockdown mixed sgRNAs or control lentivirus. (F) Xenograft tumors of Cas9 or *ONECUT2* knockdown AGS cells in nude mice. (G and H) The knockdown of *ONECUT2* decreased the weight (G) and volume (H) of xenograft tumors. Values were represented as the mean $\pm$ SEM, (B and C) n=3. \*P<0.05; \*\*P<0.01.

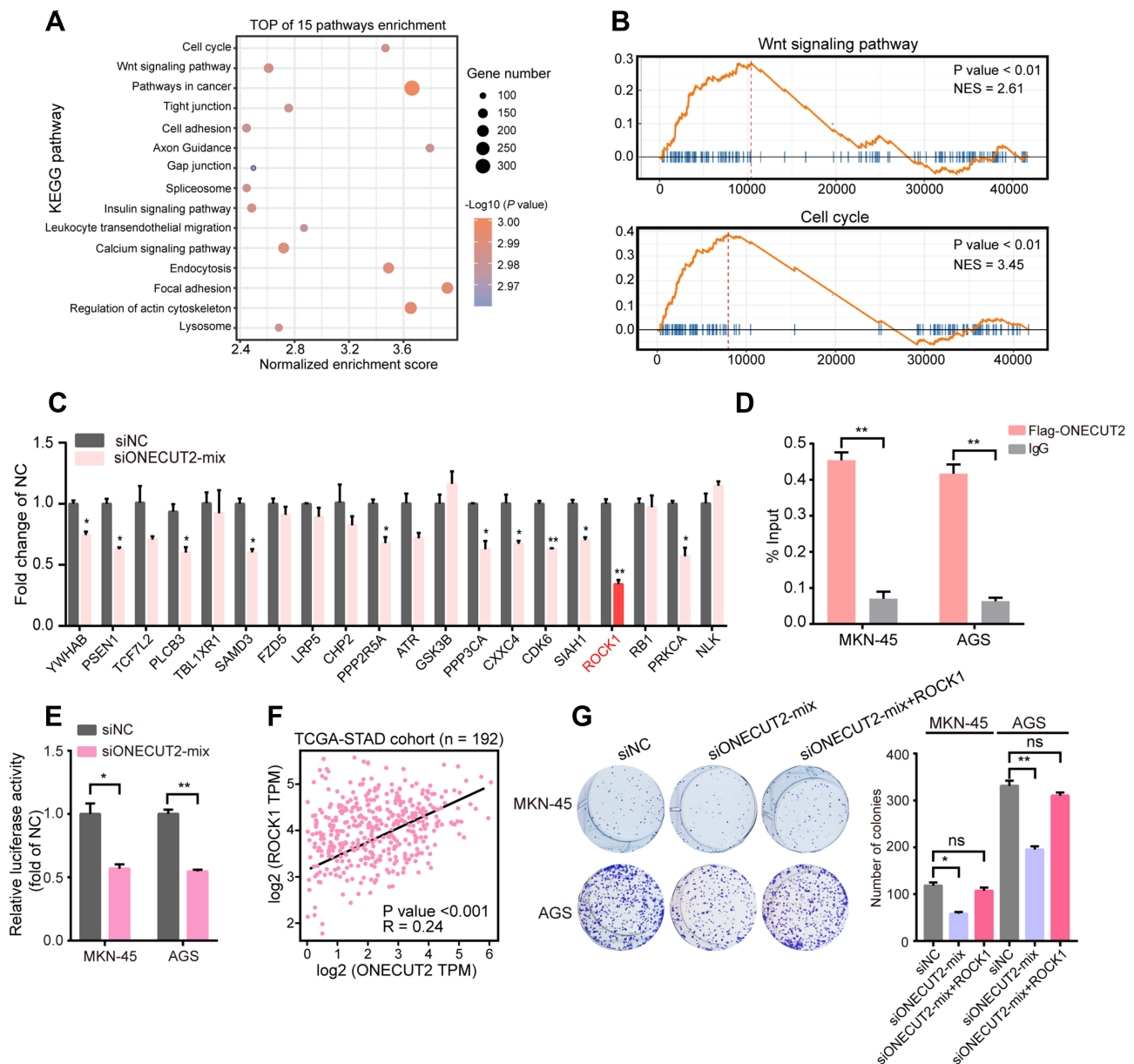
knockdown of *ONECUT2* decreased *ROCK1* promoter activity (Figure 4E). Furthermore, we found that the expression of *ONECUT2* mRNA levels was positively correlated with the expression of *ROCK1* mRNA levels in TCGA-STAD cohort (Figure 4F). These findings suggested that *ROCK1* was the direct downstream target of *ONECUT2*. Importantly, overexpression of *ROCK1* could rescue the proliferative behavior of *ONECUT2*-deficient gastric cancer cells (Figure 4G). Taken together, these studies showed that *ONECUT2* exerted its proliferative function through transcriptional regulation of *ROCK1* in gastric cancer.

## Discussion

In this study, we found that a transcriptional factor *ONECUT2* was overexpressed in the tissues of GC patients, which predicted poor patient prognosis. Strikingly, the knockdown of *ONECUT2* significantly abolished GC cells proliferation in vitro and in vivo. We further revealed that

high expression of *ONECUT2* was positively correlated with Wnt signaling and cell cycle pathways activation and enhanced *ROCK1* mRNA expression. Importantly, the overexpression of *ROCK1* could rescue *ONECUT2*-deficient GC cells proliferation, suggesting that the *ONECUT2*-*ROCK1* axis may represent a potential therapeutic target for GC patients.

Transcriptional factors are the key factors that manipulate gene expression and remodel cancer cell homeostasis, thus maintaining malignant properties of tumors. To investigate the mechanisms of such transcriptional regulation in GC, we firstly analyzed the differential expression of TFs, evaluated their proliferative functions, and defined the oncogenic role for *ONECUT2* in GC. Our results showed that *ONECUT2* was highly upregulated in GC tissues compared with nontumorous tissues. Consistently, GC patients with highly expressed *ONECUT2* exhibited worse overall survival. These findings suggested that *ONECUT2* may



**Figure 4** *ONECUT2* increases *ROCK1* mRNA expression under DNA level. **(A)** The bubble plot shows the top 15 signaling pathways enriched as detected with KEGG analysis in AGS cells infected with *ONECUT2* overexpression lentivirus. **(B)** GSEA showed the enrichment of KEGG gene sets when *ONECUT2* was overexpressed in AGS cells. **(C)** mRNA levels of various genes in AGS cells transfected with *ONECUT2* mixed siRNAs or a negative control. **(D)** The enrichment of *ONECUT2* or IgG on *ROCK1* promoter in MKN-45 or AGS cells. **(E)** The relative luciferase activity of *ROCK1* promoter transfected with *ONECUT2* mixed siRNAs or negative control in MKN-45 or AGS cells. **(F)** Expression correlation between *ONECUT2* and *ROCK1* in TCGA-STAD cohort. **(G)** MKN-45 and AGS cells transfected with *ONECUT2* mixed siRNAs, *ONECUT2* mixed siRNAs plus *ROCK1* overexpression plasmids or negative control. **(C–E and G)** Values are represented as the mean  $\pm$  SEM, n=3. \*P<0.05; \*\*P<0.01.

play a crucial role in gastric cancer progression. We further revealed that *ONECUT2* enhanced GC cell proliferation both in vitro and in vivo. Importantly, *ONECUT2* could induce *ROCK1* expression at the DNA level by binding to its promoter and activating the Wnt signaling pathway. Moreover, overexpression of *ROCK1* could rescue the proliferation of *ONECUT2*-deficient GC cells. Our studies suggested that the *ONECUT2*–*ROCK1* axis may serve as a potential therapeutic target for gastric cancer patients.

*ONECUT2* has been identified as an oncogene to accelerate tumor progression in many cancers,<sup>18,20</sup> for example, *ONECUT2* plays a role as a diver gene that activates *SMAD3*, regulates hypoxia signaling, and leads to higher degrees of hypoxia in neuroendocrine prostate cancer.<sup>14</sup> *ONECUT2* also acts as a master regulator of androgen receptor networks in metastatic castration-resistant prostate cancer. Importantly, inhibition of *ONECUT2* by a small molecule compound, suppressed prostate cancer

metastasis, which shows that *ONECUT2* is a potential drug target in the metastatic phase of aggressive prostate cancer.<sup>21</sup> These studies highlighted the key roles of *ONECUT2* in cancer initiation and development.

To further reveal the characteristic of *ONECUT2* in GC, we analyzed its expression in TCGA database and found that *ONECUT2* was highly expressed in pancreatic adenocarcinoma, esophageal carcinoma, hepatocellular carcinoma, and extremely highly expressed in GC. The GEPIA database also showed similar results (<http://gepia.cancer-pku.cn/>). Meanwhile, we also assessed the expression of *ONECUT1* and *ONECUT3*; however, in both genes, the average expression level was lower than that of *ONECUT2*. By analyzing the clinical information available on GC patients in our cohort, we firstly found that GC patients with a high level of *ONECUT2* expression exhibited worse overall survival and disease-free survival, which was consistent with the data of TCGA-STAD cohort (data of TCGA-STAD was not shown). Therefore, *ONECUT2* may serve as a potential oncogene in GC. Using siRNA and CRISPR deletion system, we found that knockdown of *ONECUT2* significantly inhibited GC cell proliferation, which is in agreement with another recent study by Seo et al.<sup>22</sup> Our works firstly identified that *ONECUT2* controlled the Wnt signaling pathway and regulated *ROCK1* expression. *ROCK1* gene encodes a serine/threonine kinase protein and is activated when bound to the GTP-bound form of RhoA protein. *ROCK1* is one of the key regulators of the Wnt/ $\beta$ -catenin pathway and it has been deemed as an oncogene in many cancers, including the GC, which accelerates cancer proliferation and migration. The overactivation of the Wnt signaling pathway in GC has also been validated by many previous reports. Our findings supported the newly identified importance of the *ONECUT2-ROCK1* axis in GC. Our next works will be focused on evaluating the therapeutic value of the molecular inhibitors that specifically target *ONECUT2* in GC.

Our findings also identified other potential proliferative TFs in GC such as RAD51 recombinase (*RAD51*) and zinc finger protein 367 (*ZNF367*). Liu et al<sup>23</sup> found *RAD51* mediated resistance of cancer stem cells to PARP inhibition in triple-negative breast cancer. Importantly, He et al<sup>24</sup> reported that *RAD51* potentiated synergistic effects of chemotherapy with PCI-24,781 and Cis-Diamminedichloroplatinum in GC. In GC, the clinical significance and detailed molecular function of *RAD51* also need to be explored further.

## Conclusion

Our works highlighted that *ONECUT2* enhances GC cells proliferation through the transcriptional activation of *ROCK1* by binding to its promoter and the subsequent upregulation of the Wnt signaling pathway. We further suggest that the *ONECUT2-ROCK1* axis could be a promising therapeutic target in gastric cancer.

## Abbreviations

TFs, transcription factors; *ONECUT2*, one cut homeobox 2; TCGA, the cancer genome atlas; GC, gastric cancer; NTs, nontumor tissues; STAD, stomach adenocarcinoma; GSEA, gene set enrichment analysis; *ROCK1*, Rho associated coiled-coil containing protein kinase 1; OS, overall survival; DFS, disease-free survival; KEGG, Kyoto encyclopedia of genes and genomes; qRT-PCR, quantitative real-time polymerase chain reaction; FDR, false discovery rate.

## Acknowledgments

We are grateful for Dr Didier Trono's gifts of the psPAX2 and pMD2.G lentivirus plasmids.

## Author Contributions

Chunyan Du and Jianghong Wu designed the study; Jie Chen and Jinggui Chen acquired the data; Chunyan Du and Bo Sun performed the analysis of data. Jie Chen and Jinggui Chen wrote the paper with comments from all authors. All authors contributed to data analysis, drafting, or revising the article, gave final approval of the version to be published, and agree to be accountable for all aspects of the work.

## Funding

This study was supported by grants from the National Natural Science Foundation of China (81702356).

## Disclosure

The authors report no conflicts of interest in this work.

## References

1. Bray F, Ferlay J, Soerjomataram I, Siegel RL, Torre LA, Jemal A. Global cancer statistics 2018: GLOBOCAN estimates of incidence and mortality worldwide for 36 cancers in 185 countries. *CA Cancer J Clin.* 2018;68:394–424. doi:10.3322/caac.21492
2. Bradner JE, Hnisz D, Young RA. Transcriptional addiction in cancer. *Cell.* 2017;168:629–643. doi:10.1016/j.cell.2016.12.013



3. Watson IR, Takahashi K, Futreal PA, Chin L. Emerging patterns of somatic mutations in cancer. *Nat Rev Genet.* 2013;14:703–718. doi:10.1038/nrg3539
4. Bhagwat AS, Vakoc CR. Targeting transcription factors in cancer. *Trends Cancer.* 2015;1:53–65. doi:10.1016/j.trecan.2015.07.001
5. Delmore JE, Issa GC, Lemieux ME, et al. BET bromodomain inhibition as a therapeutic strategy to target c-Myc. *Cell.* 2011;146:904–917. doi:10.1016/j.cell.2011.08.017
6. Xu TP, Liu XX, Xia R, et al. SP1-induced upregulation of the long noncoding RNA TINCR regulates cell proliferation and apoptosis by affecting KLF2 mRNA stability in gastric cancer. *Oncogene.* 2015;34:5648–5661. doi:10.1038/onc.2015.18
7. Wu J, Qin W, Wang Y, et al. SPDEF is overexpressed in gastric cancer and triggers cell proliferation by forming a positive regulation loop with FoxM1. *J Cell Biochem.* 2018;119:9042–9054. doi:10.1002/jcb.27161
8. Shuai Y, Ma Z, Liu W, et al. TEAD4 modulated LncRNA MNX1-AS1 contributes to gastric cancer progression partly through suppressing BTG2 and activating BCL2. *Mol Cancer.* 2020;19:6. doi:10.1186/s12943-019-1104-1
9. Choi W, Kim J, Park J, et al. YAP/TAZ initiates gastric tumorigenesis via upregulation of MYC. *Cancer Res.* 2018;78:3306–3320. doi:10.1158/0008-5472.CAN-17-3487
10. Ajani JA, Estrella JS, Chen Q, et al. Galectin-3 expression is prognostic in diffuse type gastric adenocarcinoma, confers aggressive phenotype, and can be targeted by YAP1/BET inhibitors. *Br J Cancer.* 2018;118:52–61. doi:10.1038/bjc.2017.388
11. Jacquemin P, Lannoy VJ, Rousseau GG, Lemaigre FP. OC-2, a novel mammalian member of the ONECUT class of homeodomain transcription factors whose function in liver partially overlaps with that of hepatocyte nuclear factor-6. *J Biol Chem.* 1999;274:2665–2671. doi:10.1074/jbc.274.5.2665
12. Klimova L, Antosova B, Kuzelova A, Strnad H, Kozmik Z. ONECUT1 and ONECUT2 transcription factors operate downstream of Pax6 to regulate horizontal cell development. *Dev Biol.* 2015;402:48–60. doi:10.1016/j.ydbio.2015.02.023
13. Vanhorenbeeck V, Jenny M, Cornut JF, et al. Role of the ONECUT transcription factors in pancreas morphogenesis and in pancreatic and enteric endocrine differentiation. *Dev Biol.* 2007;305:685–694. doi:10.1016/j.ydbio.2007.02.027
14. Guo H, Ci X, Ahmed M, et al. ONECUT2 is a driver of neuroendocrine prostate cancer. *Nat Commun.* 2019;10:278. doi:10.1038/s41467-018-08133-6
15. Chen D, Wang H, Chen J, et al. MicroRNA-129-5p regulates glycolysis and cell proliferation by targeting the glucose transporter SLC2A3 in gastric cancer cells. *Front Pharmacol.* 2018;9:502. doi:10.3389/fphar.2018.00502
16. Yu X, Ma C, Fu L, Dong J, Ying J. MicroRNA-139 inhibits the proliferation, migration and invasion of gastric cancer cells by directly targeting rho-associated protein kinase 1. *Oncol Lett.* 2018;15:5977–5982. doi:10.3892/ol.2018.8038
17. Hu CB, Li QL, Hu JF, Zhang Q, Xie JP, Deng L. miR-124 inhibits growth and invasion of gastric cancer by targeting ROCK1. *Asian Pac J Cancer Prev.* 2014;15:6543–6546. doi:10.7314/APJCP.2014.15.16.6543
18. Sun Y, Shen S, Liu X, et al. MiR-429 inhibits cells growth and invasion and regulates EMT-related marker genes by targeting ONECUT2 in colorectal carcinoma. *Mol Cell Biochem.* 2014;390:19–30. doi:10.1007/s11010-013-1950-x
19. Lu T, Wu B, Yu Y, et al. Blockade of ONECUT2 expression in ovarian cancer inhibited tumor cell proliferation, migration, invasion and angiogenesis. *Cancer Sci.* 2018;109:2221–2234. doi:10.1111/cas.13633
20. Ma Q, Wu K, Li H, et al. ONECUT2 overexpression promotes RAS-driven lung adenocarcinoma progression. *Sci Rep.* 2019;9:20021. doi:10.1038/s41598-019-56277-2
21. Rotinen M, You S, Yang J, et al. ONECUT2 is a targetable master regulator of lethal prostate cancer that suppresses the androgen axis. *Nat Med.* 2018;24:1887–1898. doi:10.1038/s41591-018-0241-1
22. Seo EH, Kim HJ, Kim JH, et al. ONECUT2 upregulation is associated with CpG hypomethylation at promoter-proximal DNA in gastric cancer and triggers ACSL5. *Int J Cancer.* 2020;146:3354–3368. doi:10.1002/ijc.32946
23. Liu Y, Burness ML, Martin-Trevino R, et al. RAD51 mediates resistance of cancer stem cells to PARP inhibition in triple-negative breast cancer. *Clin Cancer Res.* 2017;23:514–522. doi:10.1158/1078-0432.CCR-15-1348
24. He WL, Li YH, Hou WJ, et al. RAD51 potentiates synergistic effects of chemotherapy with PCI-24781 and cis-diamminedichloroplatinum on gastric cancer. *World J Gastroenterol.* 2014;20:10094–10107. doi:10.3748/wjg.v20.i29.10094

## Cancer Management and Research

### Publish your work in this journal

Cancer Management and Research is an international, peer-reviewed open access journal focusing on cancer research and the optimal use of preventative and integrated treatment interventions to achieve improved outcomes, enhanced survival and quality of life for the cancer patient.

Submit your manuscript here: <https://www.dovepress.com/cancer-management-and-research-journal>

Dovepress

The manuscript management system is completely online and includes a very quick and fair peer-review system, which is all easy to use. Visit <http://www.dovepress.com/testimonials.php> to read real quotes from published authors.