

# Evaluation of lid speculum with a drape (LiDrape®) for preventing surgical-field contamination

Toru Urano<sup>1</sup>  
Masataka Kasaoka<sup>1</sup>  
Kimitaka Sagawa<sup>2</sup>  
Ryoji Yamakawa<sup>1</sup>

<sup>1</sup>Department of Ophthalmology, Kurume University School of Medicine, <sup>2</sup>Department of Laboratory Medicine, Kurume University Hospital, Kurume, Japan

**Purpose:** To compare the degree of surgical-field contamination in cataract surgeries between a new draping method using a lid speculum with a drape (LiDrape®) and a conventional draping method.

**Methods:** Cataract surgery was performed on 21 eyes using LiDrape® (LiDrape® group) and on 22 eyes using a conventional draping method (conventional group). Contamination was evaluated by bacterial culture of conjunctival sac scrapings and ocular surface irrigation fluid. Conjunctival sac scrapings were collected before and after application of preoperative antibiotics. Ocular surface irrigation fluid was collected before incision placement and during surgery. Bacterial detection rate and types of organisms isolated at these four time points were examined.

**Results:** Bacterial detection rates were significantly decreased in the LiDrape® group at all time points after the application of antibiotics compared with preapplication. Regarding between-group comparisons, the bacterial detection rate in the LiDrape® group was only significantly lower than that in the conventional group in the intraoperative sample. *Propionibacterium acnes* was the most common organism isolated from ocular surface irrigation fluid. The number of *P. acnes* in the intraoperative sample was significantly lower in the LiDrape® group compared with the conventional group. There were no significant differences in detection rates for other bacteria between the groups.

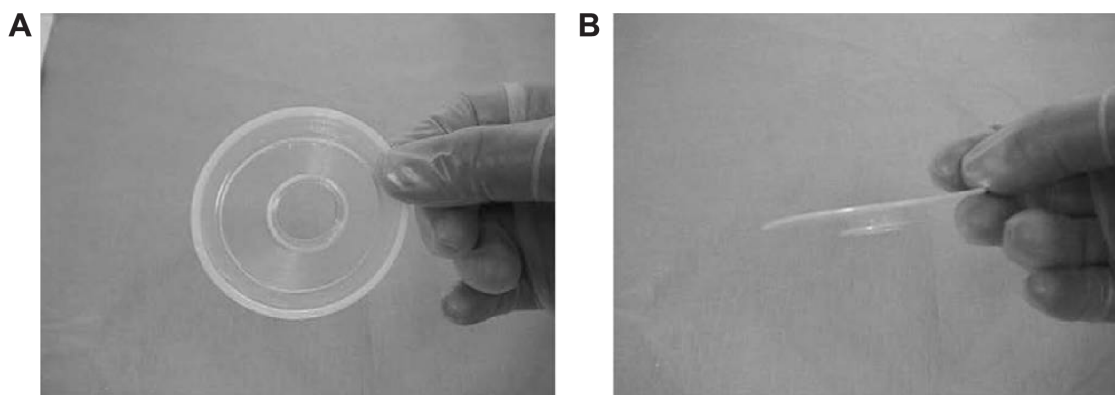
**Conclusion:** LiDrape® was as effective as conventional draping for preventing surgical-field contamination. The number of *P. acnes* during surgery was significantly lower in the LiDrape® group compared with the conventional group, suggesting that LiDrape® may contribute to the prevention of postoperative infection.

**Keywords:** LiDrape®, cataract surgery, surgical field contamination, *Propionibacterium acnes*

## Introduction

The introduction of small-incision cataract surgery has led to a reduction in surgical complications. However, postoperative endophthalmitis remains a serious complication, with a reported incidence of 0.04%–0.14% since the 1990s. Various different prophylactic measures have been taken to prevent postoperative endophthalmitis.<sup>1–7</sup> Speaker et al demonstrated, by genetic analysis of the isolates from the patient's eyelid, conjunctiva, and vitreous, that microbial flora of patients' own eyelid and conjunctiva can be a cause of postoperative endophthalmitis.<sup>8</sup> Appropriate draping isolates the surgical field from the eyelashes and prevents periocular skin exposure and invasion of microorganisms into the eye. Inappropriate draping has been reported as a risk factor for endophthalmitis.<sup>9,10</sup> However, it is difficult to drape the eyelashes and the eyelids completely using conventional draping methods. Urano et al<sup>11</sup> developed a disposable lid speculum with a drape (LiDrape®, Hakko Co., Ltd., Nagano, Japan) for simple and complete draping of the eyelashes and eyelids to ensure an appropriate surgical

Correspondence: Toru Urano  
Department of Ophthalmology, Kurume University School of Medicine, 67 Asahimachi, Kurume 830-0011, Japan  
Tel +81 942 317574  
Fax +81 942 370324  
Email kimidori.u@gmail.com



**Figure 1** LiDrape®.

**Notes:** (A) Front view. (B) Side view. Copyright © 2013. Dove Medical Press. Reproduced from Urano T, Kasaoka M, Yamakawa R, Tamai Y, Nakamura S. Development of a novel disposable lid speculum with a drape. *Clin Ophthalmol*. 2013;7:1575–1580.<sup>11</sup>

field (Figures 1 and 2). In the present study, we evaluated the efficacy of this newly developed lid speculum in patients undergoing cataract surgeries (phacoemulsification and aspiration plus intraocular lens implantation) and compared the degrees of surgical-field contamination between the LiDrape® and conventional draping methods.

## Participants and methods

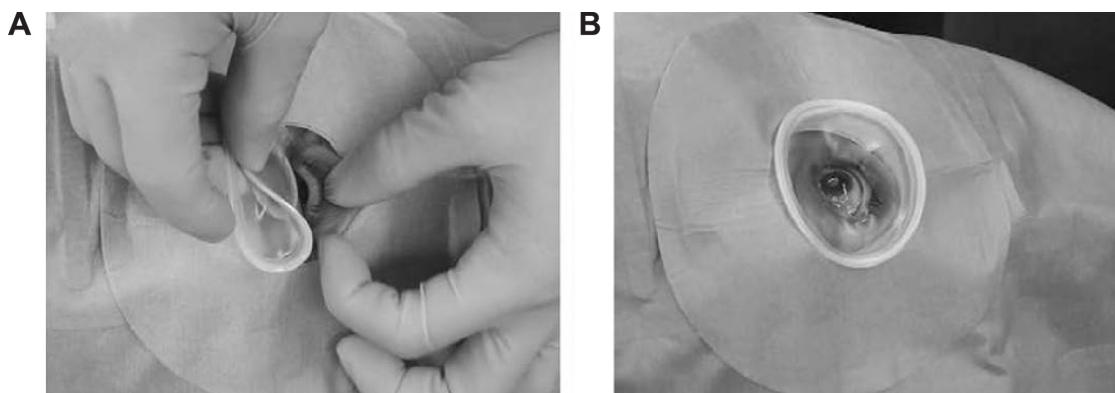
This study was approved by the Kurume University Institutional Review Board. Each patient gave informed consent prior to participation. The study protocol complied with the principles of the Declaration of Helsinki.

The new draping method with LiDrape® was used in operations on 21 eyes of 21 patients with a mean age of  $72.2 \pm 12.3$  years (LiDrape® group), while a conventional draping method was used in operations on 22 eyes of 22 patients with a mean age of  $72.2 \pm 12.4$  years (conventional group). The patients' demographic characteristics are shown in Table 1. The degree of surgical-field contamination was compared between the groups. All surgeries were performed

by a single surgeon (RY), and all patients received preoperative antibiotic treatment with gatifloxacin (Gatiflo® 0.3%, Senju Pharmaceutical Co., Ltd., Osaka, Japan) three times a day for 3 days plus a single application 1 hour before surgery and intraoperative infusion of cefotiam hydrochloride.

Conjunctival scrapings were collected by a single ophthalmologist (TU) at the outpatient clinic using Transwab® (MWE-TS, Medical Wire & Equipment Co. Ltd., Wiltshire, UK) before the application of preoperative antibiotics, but within 2 months prior to surgery, again after antibiotic application, and immediately before surgery in the operating room.

Ocular surface irrigation fluid was collected before incision placement and during surgery in the operating room, using the following procedure. Eyewash was performed with potash soap followed by 50 mL of 16-fold diluted povidone–iodine solution (8 mL of 10% povidone–iodine + 120 mL normal saline solution) for approximately 20–30 seconds, and the eyelids were disinfected using an undiluted 10% povidone–iodine-soaked swab. Patients were draped with



**Figure 2** LiDrape® attachment procedure.

**Notes:** (A) The device is attached by pulling up the upper lid while folding the top ring and inserting the bottom ring into the upper conjunctival sac and then into the lower conjunctival sac. (B) The device attached to the eye. Copyright © 2013. Dove Medical Press. Reproduced from Urano T, Kasaoka M, Yamakawa R, Tamai Y, Nakamura S. Development of a novel disposable lid speculum with a drape. *Clin Ophthalmol*. 2013;7:1575–1580.<sup>11</sup>

**Table 1** Patient characteristics

	LiDrape® group	Conventional group
Eyes	21	22
Male/female	8/13	10/12
Mean age (yr)	72.2±12.3	72.2±12.4
Diabetes mellitus (eyes)	6	5
Surgical time (min)	22.1±4.7	20.9±4.4
Incision (sclerocorneal/corneal)	19/2	18/4
Intraoperative complication	None	None

**Note:** Age and surgical time are given as mean ± standard deviation.

**Abbreviations:** yr, years; min, minutes.

disposable perforated ophthalmic sheet. LiDrape® was placed in the LiDrape® group (Figure 3A), while an adhesive sheet (Tegaderm™, 3M Healthcare, St Paul, MI, USA) was applied to cover the eyelashes and eyelids, and a suction-type speculum was placed in the conventional group (Figure 3B). After placement of the speculum, the ocular surface was irrigated with 20 mL of 16-fold diluted povidone–iodine for approximately 20–30 seconds. The ocular surface and conjunctiva were then flushed with 20 mL of balanced salt solution (BSS PLUS®, Alcon, Fort Worth, TX, USA) using a syringe, and the fluid on the ocular surface was collected as the preincision sample. A sclerocorneal or

**Table 2** Culture medium and incubation conditions

Culture medium	Incubation conditions
Direct culture	
Blood agar (prepared at our hospital)	24–72 h at 35°C, under aerobic conditions
Vitalmedia Brucella HK agar (RS) (Kyokuto Pharmaceutical Industrial Co., Ltd.)	24–72 h at 35°C, under anaerobic conditions
BD BBL™ DHL agar (Becton, Dickinson and Company)	24–72 h at 35°C, under aerobic conditions
Enrichment culture	
TGC medium 17 mL (Nikken BioMedical Laboratory)	Up to 2 wk at 35°C, under aerobic conditions

**Abbreviations:** h, hours; wk, weeks; TGC, thioglycollate.

corneal incision was made. Irrigation fluid used to prevent the corneal surface from drying out and irrigation fluid that flowed out of the eye during phacoemulsification, intraocular lens implantation, removal of viscoelastic material, and checking wound closure were collected as the intraoperative fluid sample.

Bacterial identification tests were performed at the Department of Clinical Laboratory Medicine at Kurume University Hospital. Samples from conjunctival sac scrapings were subjected to direct culture followed by enrichment culture for up to 2 weeks. Bacterial detection rates (the number of eyes with positive cultures per total number of eyes in each group) and types of organisms isolated from samples collected at four different time points were examined. The details of the culture media and conditions are given in Table 2.

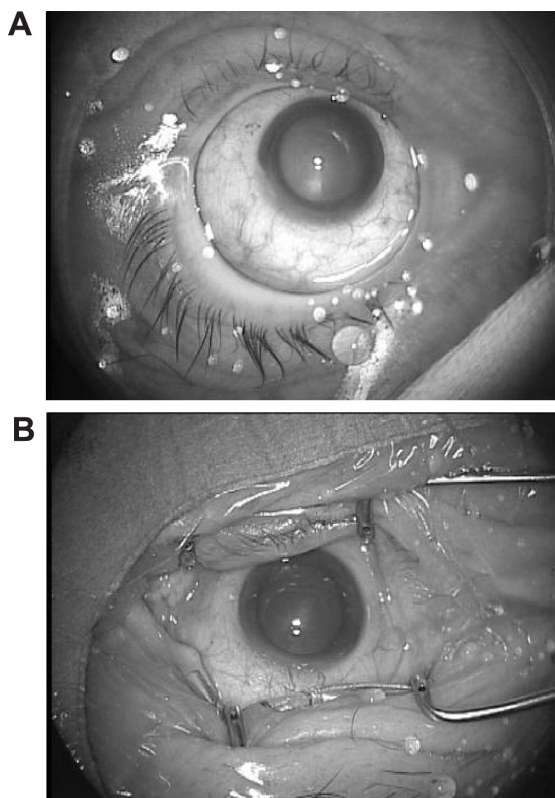
One-way analysis of variance followed by Tukey–Kramer multiple comparison tests were used for within-group comparisons, and Fisher's exact probability tests were used for between-group comparisons. *P*-values <0.05 were considered significant. Values are presented as mean ± standard deviation.

## Results

The mean operation times were 22.1±4.7 minutes in the LiDrape® group and 20.9±4.4 minutes in the conventional group. There was no significant difference between the groups (*P*=0.758, Student's *t*-test) (Table 1).

## Contamination in the conjunctival sac

The bacterial detection rate was 81.0% (17/21 eyes) in the LiDrape® group and 81.8% (18/22 eyes) in the conventional group before a 3-day application of preoperative antibiotics, and 28.6% (6/21 eyes) in the LiDrape® group and 40.9% (9/22 eyes) in the conventional group after antibiotic

**Figure 3** Draping.

**Notes:** (A) Novel draping with LiDrape®. (B) Conventional draping.

application. Detection rates were significantly lower after antibiotic application in both groups ( $P<0.01$  for LiDrape® group and  $P<0.05$  for conventional group, Tukey–Kramer multiple comparison tests), compared with preapplication rates, but there was no significant difference between the groups.

The most common organism isolated from postapplication samples was *Propionibacterium acnes*, and the number of strains of *P. acnes* increased after antibiotic application in both groups (Table 3).

## Contamination in ocular surface irrigation fluid

The bacterial detection rate was 14.3% (3/21 eyes) in the LiDrape® group and 36.4% (8/22 eyes) in the conventional group before incision placement, and it was 9.5% (2/21 eyes) in the LiDrape® group and 45.4% (10/22 eyes) in the conventional group during surgery (Table 3). The detection rate in the conventional group increased as the surgical procedure advanced, but there was no significant difference between the preapplication and intraoperative detection rates. In contrast, no such increase occurred in the LiDrape® group as surgery proceeded, and the intraoperative detection rate was significantly lower than the preantibiotic application rate ( $P<0.01$ , Tukey–Kramer multiple comparison test). Comparing between the groups, the detection rate was only significantly lower in the LiDrape® group compared with the conventional group during surgery ( $P=0.0157$ , Fisher's exact probability test) (Figure 4).

*P. acnes* was the most common organism isolated from postantibiotic samples. In the conventional group, the number of *P. acnes* decreased before incision placement but increased again during surgery, while in the LiDrape® group, the number of *P. acnes* decreased before incision placement and remained decreased during surgery. There were no significant differences in trends in numbers of other microorganisms between the groups (Figure 5). The number of *P. acnes* isolated from the intraoperative sample in the LiDrape® group was significantly lower than from the conventional group ( $P=0.0459$ , Fisher's exact probability test) (Figure 6).

## Discussion

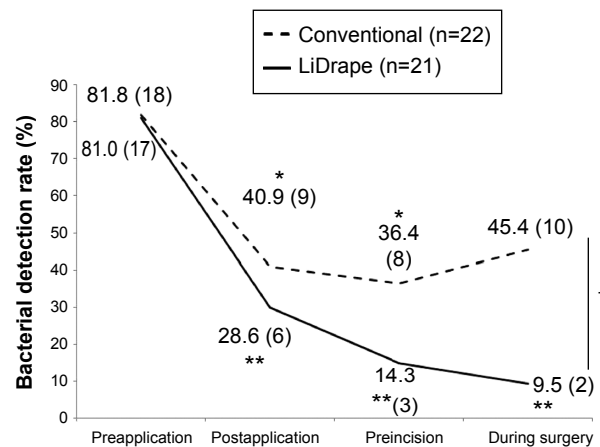
Preoperative and intraoperative antibiotic prophylactic measures are considered to contribute to sterilization of the surgical field. In the current study, surgical-field contamination rates were lower in both draping groups after the preoperative application of antibiotics, compared with the

**Table 3** Results of bacterial detection and bacterial species identification

	LiDrape® group (n=21)				Conventional group (n=22)			
	Preapplication	Postapplication	Preincision	During surgery	Preapplication	Postapplication	Preincision	During surgery
Number of eyes with bacteria isolated	17	6	3	2	18	9	8	10
Detection rate (%)	81	28.6	14.3	9.5	81.8	40.9	36.4	45.4
CNS	—	—	—	—	4	—	2	—
<i>S. epidermidis</i>	7	—	—	—	6	—	1	—
<i>S. aureus</i>	2	—	—	—	2	—	—	—
<i>Corynebacterium</i> sp.	8	—	—	—	3	—	—	—
<i>P. acnes</i>	1	4	1	1	2	7	4	7
<i>Streptococcus</i> sp.	—	—	—	—	1	—	—	—
<i>E. faecalis</i>	—	—	—	—	—	—	—	—
Others	—	—	—	—	—	—	—	—
Number of isolates	20	6	3	2	19	10	8	10

**Abbreviations:** CNS, coagulase-negative *Staphylococcus*; *S. epidermidis*, *Staphylococcus epidermidis*; *S. aureus*, *Staphylococcus aureus*; *P. acnes*, *Propionibacterium acnes*; *E. faecalis*, *Enterococcus faecalis*.



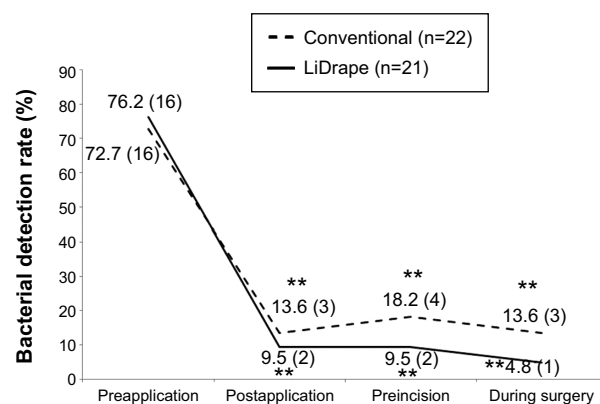


**Figure 4** Bacterial detection rates.

**Notes:** In the conventional group, bacterial detection rates were significantly lower at all time points after preoperative antibiotic application compared with preapplication (one-way ANOVA,  $P=0.00833$ ), between preapplication and postapplication of antibiotics, and between preapplication and preincision (Tukey–Kramer multiple comparison test,  $*P<0.05$ ). In the LiDrape® group, bacterial detection rates were also significantly lower at all time points after preoperative antibiotic application compared with preapplication (one-way ANOVA,  $P=6.8\times10^{-6}$ ), between preapplication and postapplication, between preapplication and preincision, and between preapplication and during surgery (Tukey–Kramer multiple comparison test,  $**P<0.01$ ). The only significant difference in bacterial detection rates between the groups was noted for the intraoperative period (Fisher's exact probability test,  $†P=0.0157$ ). Numbers in parentheses indicate the number of eyes.

**Abbreviation:** ANOVA, analysis of variance.

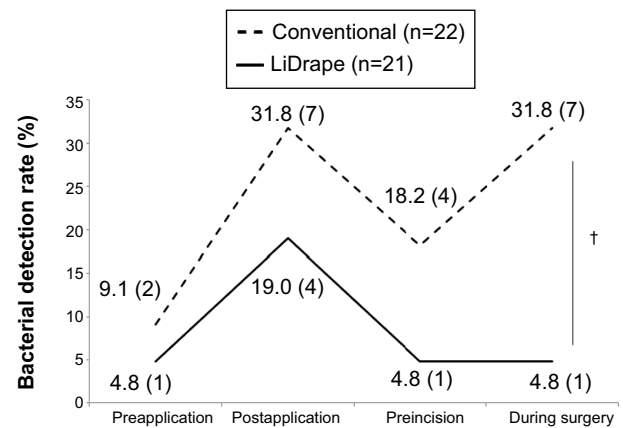
preapplication rates. This finding is consistent with that of Inoue et al.<sup>12</sup> However, in terms of between-group comparisons, the bacterial detection rate was only significantly lower in the LiDrape® group compared with the conventional group during the intraoperative period. Although the intraoperative detection rate in the conventional group was lower than the preapplication rate, the difference was not significant.



**Figure 5** Detection rates of bacteria other than *P. acnes*.

**Notes:** Bacterial detection rates were significantly lower at all time points after preoperative antibiotic application compared with preapplication in both groups (one-way ANOVA,  $P=1.28\times10^{-6}$  for conventional group and  $P=5.48\times10^{-11}$  for LiDrape® group), between preapplication and postapplication, and between preapplication and preincision (Tukey–Kramer multiple comparison test,  $**P<0.01$ ). There were no significant differences between the two groups at any of the four time points. Numbers in parentheses indicate the number of eyes.

**Abbreviations:** ANOVA, analysis of variance; *P. acnes*, *Propionibacterium acnes*.



**Figure 6** Detection rates of *P. acnes*.

**Notes:** There were no significant differences in detection rates of *P. acnes* among the time points in either group. However, the *P. acnes* detection rate was significantly lower in the LiDrape® group compared with the conventional group during surgery (Fisher's exact probability test,  $†P=0.0459$ ). Numbers in parentheses indicate the number of eyes.

**Abbreviation:** *P. acnes*, *Propionibacterium acnes*.

The bacterial detection rate in the LiDrape® group continued to be significantly lower throughout the course, compared with the preapplication rate.

The numbers of *P. acnes* isolates fluctuated in both groups. *P. acnes* is a member of the normal resident microbiota of the skin and resides in sebaceous glands and hair follicles. It has been reported to cause late-onset endophthalmitis after surgery.<sup>13,14</sup> *P. acnes* has also been reported to be difficult to eliminate with disinfection.<sup>12</sup> In the present study, the number of *P. acnes* isolates increased in both groups after preoperative application of antibiotics and subsequently decreased before incision. However, *P. acnes* increased again during surgery in the conventional group. *P. acnes* has been reported to be increased by preoperative conjunctival irrigation.<sup>15</sup> Conventional draping makes it difficult to isolate the ocular surface from the eyelids and periocular skin completely. It is therefore possible that bacteria residing on the periocular skin might gain entry into the eye during cataract surgery, via the irrigation fluid used to maintain the anterior chamber and visualization of the surgical field or to moisten the ocular surface, potentially leading to infection.

The LiDrape® lid speculum was developed to provide a constant physical block between the surgical field and the periocular skin and eyelids. The surgeon described that the LiDrape® was easier to use and more reliable than conventional draping methods. The levels of surgical-field sterilization of the LiDrape® were similar to those achieved using conventional draping. The physical isolation of the surgical field provided by the LiDrape® was effective in preventing contamination by *P. acnes*, which is resistant

to chemical disinfection. These results suggest that the LiDrape® is a promising device for helping prevent postoperative endophthalmitis.

The potential limitations of this study included its small sample size and its restriction to cataract surgery. Further studies with larger samples and other types of surgeries are warranted to examine the effects of LiDrape® on the elimination of bacteria from the surgical field. Shimada et al reported that repeated irrigation of the operative field with 0.25% povidone–iodine during cataract surgery led to an extremely low bacterial contamination rate in the anterior chamber at the end of surgery.<sup>16</sup> This irrigation method in addition to the use of LiDrape® may lead to further sterilization of surgical field.

## Disclosure

The authors report no conflicts of interest in this work.

## References

1. Eifrig CW, Flynn HW Jr, Scott IU, Newton J. Acute-onset postoperative endophthalmitis: review of incidence and visual outcomes (1995–2001). *Ophthalmic Surg Lasers*. 2002;33(5):373–378.
2. Montan P, Lundström M, Stenevi U, Thorburn W. Endophthalmitis following cataract surgery in Sweden. The 1998 national prospective survey. *Acta Ophthalmol Scand*. 2002;80(3):258–261.
3. Kamalarajah S, Silvestri G, Sharma N, et al. Surveillance of endophthalmitis following cataract surgery in the UK. *Eye*. 2004;18(6):580–587.
4. Wong TY, Chee SP. The epidemiology of acute endophthalmitis after cataract surgery in an Asian population. *Ophthalmology*. 2004;111(4):699–705.
5. Wejde G, Montan P, Lundström M, Stenevi U, Thorburn W. Endophthalmitis following cataract surgery in Sweden: national prospective survey 1999–2001. *Acta Ophthalmol Scand*. 2005;83(1):7–10.
6. Miller JJ, Scott IU, Flynn HW Jr, Smiddy WE, Newton J, Miller D. Acute-onset endophthalmitis after cataract surgery (2000–2004): incidence, clinical settings, and visual acuity outcomes after treatment. *Am J Ophthalmol*. 2005;139(6):983–987.
7. Oshika T, Hatano H, Kuwayama Y, et al. Incidence of endophthalmitis after cataract surgery in Japan. *Acta Ophthalmol Scand*. 2007;85(8):848–851.
8. Speaker MG, Milch FA, Shah MK, Eisner W, Kreiswirth BN. Role of external bacterial flora in the pathogenesis of acute postoperative endophthalmitis. *Ophthalmology*. 1991;98(5):639–649.
9. Lusk JE, Lanier JD. The incise drape. *Ophthalmic Surg*. 1980;11(10):722–724.
10. Buzard K, Liapis S. Prevention of endophthalmitis. *J Cataract Refract Surg*. 2004;30(9):1953–1959.
11. Urano T, Kasaoka M, Yamakawa R, Tamai Y, Nakamura S. Development of a novel disposable lid speculum with a drape. *Clin Ophthalmol*. 2013;7:1575–1580.
12. Inoue Y, Usui M, Ohashi Y, Shiota H, Yamazaki T; Preoperative Disinfection Study Group. Preoperative disinfection of the conjunctival sac with antibiotics and iodine compounds: a prospective randomized multicenter study. *Jpn J Ophthalmol*. 2008;52(3):151–161.
13. Piess KL, Kincaid MC, Tetz MR, Apple DJ, Roberts WA, Price FW Jr. Localized endophthalmitis: a newly described cause of the so-called toxic lens syndrome. *J Cataract Refract Surg*. 1987;13(5):498–510.
14. Meisler DM, Mandelbaum S. Propionibacterium-associated endophthalmitis after extracapsular cataract extraction. Review of reported cases. *Ophthalmology*. 1989;96(1):54–61.
15. Isenberg S, Apt L, Yoshimuri R. Chemical preparation of the eye in ophthalmic surgery: I. Effect of conjunctival irrigation. *Arch Ophthalmol*. 1983;101(5):761–763.
16. Shimada H, Arai S, Nakashizuka H, Hattori T, Yuzawa M. Reduction of anterior chamber contamination rate after cataract surgery by intraoperative surface irrigation with 0.25% povidone-iodine. *Am J Ophthalmol*. 2011;151(1):11–17.

## Clinical Ophthalmology

### Publish your work in this journal

Clinical Ophthalmology is an international, peer-reviewed journal covering all subspecialties within ophthalmology. Key topics include: Optometry; Visual science; Pharmacology and drug therapy in eye diseases; Basic Sciences; Primary and Secondary eye care; Patient Safety and Quality of Care Improvements. This journal is indexed on

Submit your manuscript here: <http://www.dovepress.com/clinical-ophthalmology-journal>

## Dovepress

PubMed Central and CAS, and is the official journal of The Society of Clinical Ophthalmology (SCO). The manuscript management system is completely online and includes a very quick and fair peer-review system, which is all easy to use. Visit <http://www.dovepress.com/testimonials.php> to read real quotes from published authors.