

RESEARCH ARTICLE

L1 Cell Adhesion Molecule (L1CAM) expression in endometrioid endometrial carcinomas: A possible pre-operative surrogate of lymph vascular space invasion

Daniela de Freitas^{1,2}, Fernando Nalesso Aguiar¹, Cristina Anton¹, Carlos Eduardo Bacchi³, Jesus Paula Carvalho^{1,4}, Filomena Marino Carvalho^{2*}

1 Instituto do Cancer do Estado de São Paulo, Faculdade de Medicina da Universidade de São Paulo, São Paulo, SP, Brazil, **2** Department of Pathology, Faculdade de Medicina da Universidade de São Paulo, São Paulo, SP, Brazil, **3** Consultoria em Patologia, Botucatu, SP, Brazil, **4** Department of Obstetrics and Gynecology, Faculdade de Medicina da Universidade de São Paulo, São Paulo, SP, Brazil

* filomena.carvalho@fm.usp.br



OPEN ACCESS

Citation: de Freitas D, Aguiar FN, Anton C, Bacchi CE, Carvalho JP, Carvalho FM (2018) L1 Cell Adhesion Molecule (L1CAM) expression in endometrioid endometrial carcinomas: A possible pre-operative surrogate of lymph vascular space invasion. PLoS ONE 13(12): e0209294. <https://doi.org/10.1371/journal.pone.0209294>

Editor: Masaru Kato, National Cancer Center, JAPAN

Received: September 2, 2018

Accepted: December 3, 2018

Published: December 17, 2018

Copyright: © 2018 de Freitas et al. This is an open access article distributed under the terms of the [Creative Commons Attribution License](https://creativecommons.org/licenses/by/4.0/), which permits unrestricted use, distribution, and reproduction in any medium, provided the original author and source are credited.

Data Availability Statement: All relevant data are within the manuscript.

Funding: FAPESP (Fundação de Amparo à Pesquisa do Estado de São Paulo) financial research support (process 2018/06717-8) to FMC. FAPESP had no involvement in study design, collection, analysis or interpretation of data.

Competing interests: The authors have declared that no competing interests exist.

Abstract

Background

Risk stratification of endometrial carcinomas is primarily based on surgical staging that requires extensive retroperitoneal lymph node dissection. One of the most powerful predictor of lymph node involvement is the lymph vascular space invasion (LVSI). The objective of this study was to determine the potential of L1 Cell Adhesion Molecule (L1CAM) to predict LVSI and its association with other risk factors in endometrioid endometrial carcinomas.

Materials and methods

We studied 47 consecutive patients aged 37–88 (61.34±10.52). Twenty-three patients (48.9%) were submitted to complete surgical staging. Nine patients (19.1%) underwent surgical staging without para-aortic dissection. Seven (14.9%) were submitted to hysterectomy with no lymph node dissection. Eight patients (17.0%) only had the biopsy material for analysis. The 32 patients submitted to lymphadenectomy were staged according to the FIGO system and classified among the risk categories of the ESMO-ESGO-ESTRO guidelines. The following histological characteristics were analyzed: tumor size (mm), depth of myometrial infiltration, presence of microcystic, elongated, and fragmented (MELF) pattern of myoinvasion, and lymph vascular space invasion (LVSI). Immunohistochemical analyses of mismatch repair (MMR) proteins MLH1, MSH2, MSH6, and PMS2, p53, and L1CAM were performed in formalin-fixed paraffin embedded whole tumor tissue sections.

Results

LVSI was identified in 26/41 (63,4%) of the cases. L1CAM was positive in 8/47 (17%) cases, all of them positive for LVSI and within the high-risk category of ESMO-ESGO-ESTRO. L1CAM-positive cases were associated with high histological grade and p53 aberrant

immunohistochemical profile. Besides, it showed a trend to larger tumors, greater depth of myometrial infiltration, and with a higher frequency of the MELF pattern of myoinvasion. LVSI was also associated with FIGO stage, tumor size, depth of myometrial infiltration, and tumor grade.

Conclusions

L1CAM is highly associated with LVSI and could be used as a pre-operative predictor of lymph node involvement in endometrioid endometrial carcinomas.

Introduction

The standard treatment for endometrial carcinomas consists of a hysterectomy with bilateral salpingo-oophorectomy and pelvic and para-aortic lymphadenectomy, followed by adjuvant therapy for high-risk disease. Over the past decades debate has developed questioning the need for lymphadenectomy in every case, as well as the criteria for adjuvant treatment. The great challenge is the identification of prognostic biomarkers, preferably to be investigated in biopsy specimens, prior to surgical treatment, to drive toward better therapeutic decisions, including or not the need for lymphadenectomy, and evaluating the benefit of using adjuvant radio- and/or chemotherapy.

Lymph vascular space invasion (LVSI) is one of the most important predictors of lymph node involvement [1–4]. The challenge is how to identify LVSI prior to the primary surgical treatment. A promising biomarker to risk stratification is the L1 Cell Adhesion Molecule (L1CAM), a 200–220kDA transmembrane glycoprotein of the immunoglobulin superfamily that plays an important role in nervous system development, including neuronal migration and differentiation. L1CAM has been shown to be an important prognostic factor in endometrial carcinomas and is predictive of lymph node involvement [5–8].

Because the expression of L1CAM is detectable at the time of the diagnostic biopsy, the main objective of this study is to determine its potential to predict LVSI. If so, L1CAM could be a pre-operative surrogate of lymph vascular space invasion. In this study, beyond the expression of L1CAM, we also analyze its association with classical risk factors in endometrial carcinomas of endometrioid type, according to the International Federation of Gynecology and Obstetrics (FIGO) stages I–III.

Materials and methods

Institutional approval

The study was approved by the Scientific Committee of the Department of Pathology of Faculdade de Medicina da Universidade de Sao Paulo and by the Ethics Committee for Research Projects of the Hospital das Clinicas da Faculdade de Medicina da Universidade de Sao Paulo (Comissao de Ética para Análise de Pesquisa—CAPPesq) (case # 351/16), and Plataforma Brasil (CAAE 59579616.8.0000.0065). It complies with the ethical precepts proposed by the legislation in force in Brazil R466 / 2012. The specific informed consent form for this work was waived by the Ethics Committee above. The decision was based on the fact that the study was retrospective, with use of data from medical records and minimum tissue from paraffin blocks from patients already treated, with no risk or benefit arising from the results, and with guarantees of their anonymity.

Study cohort

Forty-seven consecutive cases of endometrial carcinomas of endometrioid type from September 2015 to May 2018 were retrieved from the Department of Pathology report files. Patient’s age ranged from 37 to 88 years (61.34±10.52) with a median of 60 years. Twenty-three patients (48.9%) were submitted to complete surgical staging (hysterectomy, bilateral salpingo-oophorectomy, and pelvic and para-aortic lymphadenectomy). Nine patients (19.1%) underwent surgical staging without para-aortic dissection; one of these was submitted to sentinel lymph node biopsy. Seven (14.9%) were submitted to hysterectomy with no lymph node dissection. Eight patients (17.0%) only had the biopsy material for analysis. The 32 patients submitted to lymphadenectomy had 2–109 studied lymph nodes (33.8±25.8; median 32.5). It should be noted that one patient had two sentinel lymph nodes studied. These 32 patients were staged according to the FIGO system [9]. There were 9 (28.1%) FIGO stage IA, 12 (37.5%) FIGO IB, 3 (9.4%) FIGO II, and 8 (25%) FIGO III. Risk classification was performed according to the ESMO-ESGO-ESTRO guidelines [10].

All specimens were analyzed separately by two pathologists (FMC and FNA). The tumors were classified according the WHO 2014 criteria and graded using the FIGO system [11]. The following histological characteristics were analyzed: tumor size (mm), percentage of myometrial infiltration, presence of microcystic, elongated, and fragmented (MELF) pattern of myoinvasion, and lymph-vascular space invasion (LVSI). Immunohistochemistry reactions were performed in 4-µm thick 10% formalin-fixed paraffin-embedded whole tissue sections. Details of the reactions are summarized in Table 1.

Deficiency of DNA mismatch repair (MMR) proteins MLH1, MSH2, MSH6, and PMS2 was defined as complete loss of nuclear expression within tumor cells in the presence of positive internal controls in lymphocytes and/or stroma.

Aberrant p53 protein (mutated/inactivated) was considered if the tumor exhibited strong uniform nuclear staining in >80% of the tumor cells, or the complete absence of such staining in the tumor cells, in the presence of focal nuclear staining of the stromal cells. Wild-type p53 immunostaining was considered if weak or moderate nuclear staining of the tumor cells was present in <80% of tumor cells.

L1CAM expression was considered positive if the expression was present in 10% or more tumor cells as illustrated in Fig 1.

The tumors were grouped as p53-wild, p53-aberrant, and MMR-deficient (loss of any of the four proteins) according their immunohistochemical profile.

Statistical analysis

The chi-square test was used to evaluate the association of L1CAM and LVSI with the categorical variables. Age of patients, tumor size, and percentage of myometrial invasion were treated

Table 1. Reagents and methods used for immunohistochemical reactions.

Primary antibody	Clone	Provider	Titration	Antigen retrieval	Time of antigen retrieval
p53	DO-7	Dako*	1:3000	Tris-EDTA pH 9.0	20 min
MLH1	ES05	Dako*	Pure; Linker mouse	Tris-EDTA pH 9.0	20 min
MSH2	G219-1129	Dako*	1:400	Tris-EDTA pH 9.0	30 min
MSH6	SP93	Dako*	1:400; Linker mouse	Tris-EDTA pH 9.0	20 min
PMS2	EP51	Dako*	1:2; Linker mouse	Tris-EDTA pH 9.0	40 min
L1CAM	74-5H7	COVANCE**	1:300	Citrate (pH 6.1)	20 min

*: Dako (Carpinteria, CA, USA)

** : (Covance, San Diego, USA)

<https://doi.org/10.1371/journal.pone.0209294.t001>

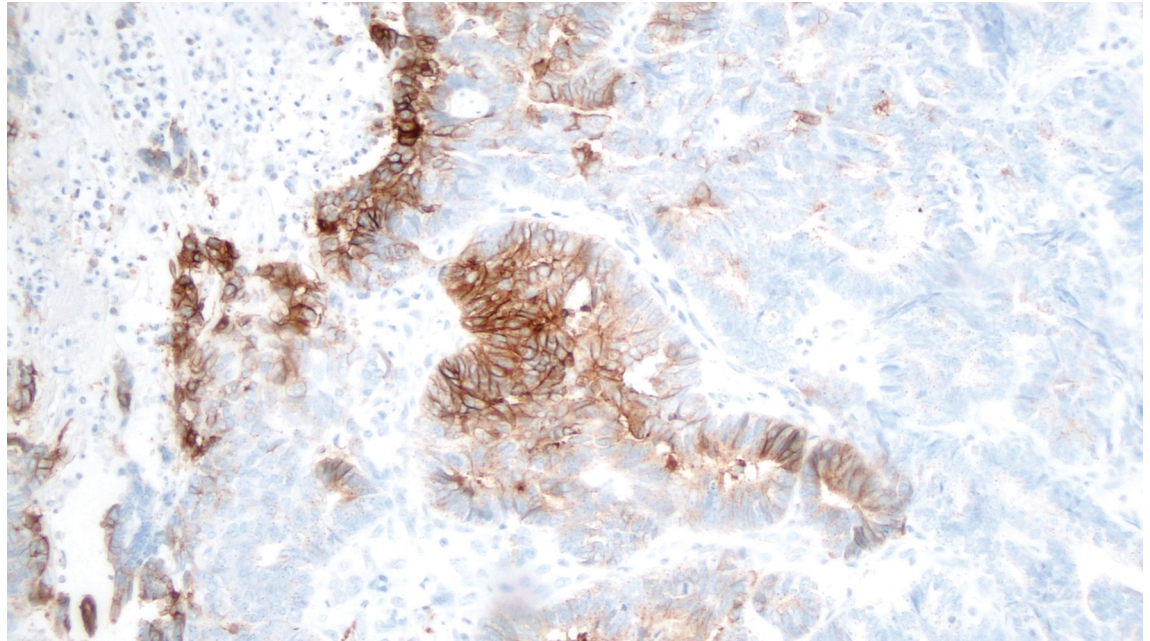


Fig 1. Endometrioid carcinoma with membranous expression of L1CAM.

<https://doi.org/10.1371/journal.pone.0209294.g001>

as quantitative variables and compared in the L1CAM, and in the LVSI-positive and negative groups, through the Mann-Whitney U test. Statistical analyses were performed using MedCalc Software, version 17.9.2 (BVBA, Ostend, Belgium). p-values less than 0.05 were considered significant.

Results

The pathologists were concordant in the interpretation of all cases. No serous or clear cells carcinoma were identified after review. Unequivocal LVSI was identified in 26/41 (63.4%) of the cases submitted to hysterectomy. The involvement was focal in 12 and multifocal in 14 cases. L1CAM was positive in 8/47 (17.0%) cases distributed as follow: 10% of tumor cells (2 cases), 20% (1 case), 30% (1 case), 40% (1 case), 80% (2 cases), and 90% (1 case). All L1CAM-positive cases presented with LVSI (focal in 3 cases and multifocal in 5 cases) and within the high-risk category of ESMO-ESGO-ESTRO. L1CAM expression was associated with FIGO stage >I, high-grade tumors, and immunoprofile p53-aberrant. Seven cases had surgical staging procedure, all of them within the high-risk category of ESMO-ESGO-ESTRO. L1CAM-positive cases presented as larger tumors, with a greater depth of myometrial infiltration, and with a higher frequency of the MELF pattern of infiltration, although these differences did not reach the level of significance. The summary of clinicopathologic characteristic according L1CAM expression is presented in [Table 2](#). The other features associated with LVSI were FIGO stage, tumor size, depth of myometrial infiltration, and tumor grade. [Table 3](#) shows the results of these associations.

Discussion

Endometrial carcinomas occur more frequently as the endometrioid histological type, until recently considered the prototype of the estrogen-related carcinomas (type I). This diagnosis is often still restricted to the uterine body and considered as of favorable prognosis. The

Table 2. Clinicopathologic characteristics of 47 endometrioid carcinomas of endometrium according L1CAM expression.

	Total	L1CAM-positive	L1CAM-negative	<i>p</i>
Age of patients	37–88 (CI95% 58.2–64.2)	52–67 (CI95% 53.62–66.19)	37–88 (CI95% 58.00–68.75)	0.561
FIGO stage				
IA	9 (28.1)	0 (0%)	9 (36%)	0.084
IB	12 (37.5%)	2 (28.6%)	10 (40%)	
II	3 (9.4%)	1 (14.3%)	2 (8%)	
III	8 (24.9%)	4 (57.2%)	4 (16%)	
FIGO				
stage I	21 (65.6%)	2 (28.6%)	19 (76%)	0.021
Stage >I	11 (34.4%)	5 (71.4%)	6 (24%)	
ESMO-ESGO-ESTRO classes[10]				
Low	5 (15.6%)	0 (0%)	5 (20%)	0.004
Intermediate	2 (6.2%)	0 (0%)	2 (8%)	
High-intermediate	12 (37.5%)	0 (0%)	12 (48%)	
High	13 (40.6%)	7 (100%)	6 (24%)	
Tumor size	8–70 mm (CI95% 26.09–35.24) Median 30mm	27–60mm (CI95% 27.97–56.12) Median 35.5mm	8–70mm (CI95% 20.70–31.65) Median 29.5mm	0.061
Myoinvasion (%)	0.2%–100% (CI95% 39.66–61.06)	20%–100% (CI95% 21.62–99.19)	0.2%–99% (CI95% 17.58–67.49)	0.098
Myometrial invasion				
<50%	18 (46.2%)	3 (37.5%)	15 (48.4%)	0.087
>50%	21 (53.8%)	5 (62.5%)	16 (51.6%)	
MELF				
Yes	12 (30.8%)	3 (62.5%)	9 (29%)	0.648
No	27 (69.2%)	5 (37.5%)	22 (71%)	
Tumor grade				
G1/2	37 (78.7%)	3 (37.5%)	34 (87.2%)	0.002
G3	10 (21.3%)	5 (62.5%)	5 (12.8%)	
LVSI				
No	15 (36.6%)	0 (0%)	15 (45.5%)	0.018
Yes	26 (63.4%)	8 (100%)	18 (54.5%)	
IHC profile				
MMR	20 (42.6%)	4 (50%)	16 (41%)	0.030
p53-wild	21 (44.7%)	1 (12.5%)	20 (51.3%)	
p53-aberrant	6 (12.8%)	3 (37.5%)	3 (7.7%)	

<https://doi.org/10.1371/journal.pone.0209294.t002>

increasing incidence, together with advances in molecular knowledge, have exposed their heterogeneity and the need for different therapeutic approaches, particularly in terms of endometrioid histology.

Endometrioid carcinomas represent 80% of endometrial carcinomas and patients are often diagnosed at an early stage with the disease localized in the uterus [11]. Most of these cases have a favorable prognosis and could be treated without lymphadenectomy. However, it must be noted that even low-grade endometrial carcinomas can recur [12–14].

The definitions of risk of lymph node involvement, risk of recurrence and of overall survival through morphological analysis are limited. This is partly due to the fact that the criteria are not sufficiently reproducible, but also because there is considerable overlapping between cases of low and high grade. The surgical staging proposed by FIGO is based on the depth of myometrial infiltration, locoregional extension and distance of dissemination [9]. The incorporation of other information such as type and histological grade, patient age, tumor size and

Table 3. Association between clinicopathologic characteristics and lymphovascular space invasion (LVSI).

	Total	LVSI+	LVSI-	p
Age of patients	37–88 (CI95% 58.2–64.2)	37–78 (CI95% 56–66)	45–88 (CI95% 58–68.2)	0.828
	9 (28.1)	3 (13%)	6 (66.7%)	0.023
IB	12 (37.5%)	10 (43.5%)	2 (22.2%)	
II	3 (9.4%)	3 (13%)	0 (0)	
III	8 (24.9%)	7 (30.3%)	1 (11.1%)	
FIGO				
stage I	21 (65.6%)	13 (56.5%)	8 (88.9%)	0.088
stage >I	11 (34.4%)	10 (43.5%)	1 (11.1%)	
ESMO-ESGO-ESTRO classes[10]				
Low	5 (15.6%)	0 (0%)	5 (55.6%)	<0.0001
Intermediate	2 (6.2%)	0 (0%)	2 (22.2%)	
High-intermediate	12 (37.5%)	11 (47.8%)	1 (11.1%)	
High	13 (40.6%)	12 (52.2%)	1 (11.1%)	
Tumor size	8–70 mm (CI95% 26.09–35.24)	20–70mm (CI95% 30–39.65)	8–39mm (CI95% 14.06–29.47)	0.0003
Myoinvasion (%)	0.2%–100% (CI95% 39.66–61.06)	5%–100% (CI95% 47.39–82.90)	0.2%–65% (CI95% 8.59–53.62)	0.003
Myometrial invasion				
<50%	18 (46.2%)	8 (30.8%)	10 (76.9%)	0.007
>50%	21 (53.8%)	18 (69.2%)	3 (23.1%)	
MELF				
Yes	12 (30.8%)	10 (38.5%)	2 (15.4%)	0.146
No	27 (69.2%)	16 (61.5%)	11 (84.6%)	
Tumor grade				
G1/2	37 (78.7%)	18 (69.2%)	14 (93.3%)	0.076
G3	10 (21.3%)	8 (30.8%)	1 (6.7%)	
L1CAM				
Negative	33 (80.5%)	18 (69.2%)	15 (100%)	0.018
Positive	8 (19.5%)	8 (30.8%)	0 (0%)	
IHC profile				
MMR	20 (42.6%)	12 (46.2%)	5 (33.3%)	0.247
p53-wild	21 (44.7%)	9 (34.6%)	9 (60%)	
p53-aberrant	6 (12.8%)	5 (19.2%)	1 (6.7%)	

<https://doi.org/10.1371/journal.pone.0209294.t003>

LVSI was considered for risk stratification of recurrence in several systems and in clinical trials, such as PORTEC1 (Post-Operative Radiation Therapy in Endometrial Carcinoma) and GOG (Gynecologic Oncology Group) [15]. The American Joint Committee on Cancer in its 8th edition reports the following prognostic factors with level I evidence: FIGO stage, histologic grade and type, depth of myometrial infiltration, LVSI, omentectomy (for high grade tumors), pelvic and para-aortic lymph nodes, peritoneal cytology and morcellation of surgical specimens. Estrogen and progesterone receptors, and expression of suppressor genes and oncogenes, are level II of evidence. However, the definitions of the AJCC prognostic groups, at this date, only include FIGO categories [16].

The consensus conference on endometrial cancer with representatives of the European Society for Medical Oncology (ESMO), the European Society for Radiotherapy & Oncology (ESTRO), and the European Society of Gynaecological Oncology (ESGO) suggested a risk stratification to guide adjuvant therapy based on the International Federation of Gynecology and Obstetrics (FIGO) stage, tumor type, tumor grade, depth of myometrial invasion, and

LVSI [10]. The ESMO-ESGO-ESTRO consensus revised in 2014 presents an accurate stratification of risk to guide adjuvant therapy [10]. However, it is primarily based on the FIGO surgical staging, and includes lymph node study.

The possibility of omission of the extensive retroperitoneal lymphadenectomy has been widely discussed [17, 18]. Endometrial carcinomas increase in frequency and affect women with comorbidities associated with obesity, one of the most important risk factors for the disease and for extensive surgical procedures. The inclusion of lymphadenectomy in the treatment requires surgical expertise and reference centers, all of which lead to increased costs. Mariani et al. [19] had already questioned the indication of lymphadenectomy in 2000. On that occasion, they proposed that tumors 20 mm or less were candidates to omission of lymphadenectomy. Besides tumor size, later, the Mayo Clinic nomogram [20] included myometrial invasion, tumor grade, cervical stromal invasion, and LVSI, although it considered an alternative model without tumor size. The tumor size of our study ranged from 8- to 70 mm (30.67 ± 13.51) (CI95% 25.00–33.02), with a median size of 30 mm. Only 10/36 of our cases (31.2%) measured 20 mm or less.

The limitation of these models is the inclusion of variables of the surgical specimen, requiring an intraoperative frozen section examination (FSE) or a two-step surgical procedure. Although FSE is accurate to determine myometrial invasion, tumor size and cervical extension, it is our opinion that it is not feasible for all hospitals and has limitations regarding LVSI [21].

The Cancer Genome Atlas (TCGA) defined four distinct endometrial carcinomas prognostic subgroups, *POLE* ultramutated, microsatellite instability hypermutated (MSI), copy-number-low microsatellite stable (CN-low-MSS), and copy-number-high serous-like (CN-high) [22]. These categories can be determined by relatively simple surrogates: mutations in the exonuclease domain of *POLE*, loss of mismatch repair proteins (MMR) (MLH1, MSH2, MSH6, and PMS2), and p53 expression (aberrant or wild-type) [23]. The integration of molecular classification into pathologic diagnosis was a great advance in clinical practice. This classification is an effective tool to stratify patients according to prognosis and, possibly, different therapeutic approaches, particularly when it comes to immunotherapies [24, 25]. The preliminary results with the molecular based classification indicate that the diagnosis through biopsy is highly concordant with the surgical specimens [26]. The prognostic differences in the molecular subgroups determined by the TCGA were observed in conventionally treated patients and, therefore, it is not possible to know if the omission of the lymphadenectomy would have had any influence on the outcome. Moreover, the prognostic curves determined by the MMR and p53-wild groups overlap. Clearly, we need additional markers to personalize treatment.

The inclusion of other biomarkers to improve pre-operative evaluation, such as L1CAM, seems useful. Others have found significant association between L1CAM and p53-mutant, with evidence of different mechanisms, although both related to risk recurrence [27]. A concern with the use of L1CAM is its heterogeneous distribution, although 10% of positive cells is enough to define its positivity. We support us on data that demonstrated concordance between biopsies and surgical specimens. Tangen et al. [28], performed L1CAM stain in 795 hysterectomy and 1134 curettage specimen, and demonstrate significant correlation. Van Esterik et al. [29] recognize the results of previous studies considering molecular analysis on pre-operative biopsies concordant with the final hysterectomy, and aimed to investigate the impact of tumor heterogeneity in the molecular risk assessment in endometrial cancers. They studied 49 cases regarding the expression of *POLE*, *CTNNB1*, p53, MMR and L1CAM. L1CAM concordance was 91.8% (45/49). In this sense, we feel comfortable in studying its expression primarily in surgical specimens. In addition, in 8 of our cases, the study was performed in biopsies because they contained more tumoral volume.

All L1CAM-positive cases of our series presented LVSI. The other variable associated with LVSI were FIGO stage, tumor size, depth of myometrial infiltration, and tumor grade. Except tumor grade, all the variables depend upon the surgical specimens.

It is well established [30, 31] that the presence of LVSI is a potent predictor of lymph node metastasis. Even more, it is a powerful prognostic factor, even in the patients with no lymph node metastasis. Tangen et al. [28] demonstrated that expression of L1CAM in curettage was predictive of lymph node metastasis and correlated to L1CAM level in the corresponding hysterectomy.

The small number of cases is a weakness of this study, however, there are some strengths such as, unselected cohort of patients treated in a single cancer reference center and a uniform surgical and pathology team.

Our preliminary results with the expression of L1CAM stimulate its use as a surrogate of LVSI, and so lymph node involvement, with the advantage of possible preoperative evaluation. Although limited by the small number of cases, the results show a rather optimistic trend and may stimulate extension to a larger number of cases.

Author Contributions

Conceptualization: Jesus Paula Carvalho, Filomena Marino Carvalho.

Data curation: Daniela de Freitas, Cristina Anton.

Formal analysis: Daniela de Freitas, Cristina Anton, Jesus Paula Carvalho, Filomena Marino Carvalho.

Methodology: Fernando Nalesso Aguiar, Carlos Eduardo Bacchi, Jesus Paula Carvalho, Filomena Marino Carvalho.

Resources: Carlos Eduardo Bacchi.

Supervision: Jesus Paula Carvalho, Filomena Marino Carvalho.

Visualization: Daniela de Freitas.

Writing – original draft: Daniela de Freitas, Cristina Anton.

Writing – review & editing: Jesus Paula Carvalho, Filomena Marino Carvalho.

References

1. Widschwendter P, Bauer E, De Gregorio N, Bekes I, Janni W, Scholz C, et al. Influence of Prognostic Factors on Lymph Node Involvement in Endometrial Cancer: A Single-Center Experience. *Int J Gynecol Cancer*. 2018. Epub 2018/05/11. <https://doi.org/10.1097/IGC.0000000000001290> PMID: 29757871.
2. Taşkın S, Şükür YE, Varlı B, Koyuncu K, Seval MM, Ateş C, et al. Nomogram with potential clinical use to predict lymph node metastasis in endometrial cancer patients diagnosed incidentally by postoperative pathological assessment. *Arch Gynecol Obstet*. 2017; 296(4):803–9. Epub 2017/07/31. <https://doi.org/10.1007/s00404-017-4477-7> PMID: 28762064.
3. Matsuo K, Garcia-Sayre J, Medeiros F, Casabar JK, Machida H, Moeini A, et al. Impact of depth and extent of lymphovascular space invasion on lymph node metastasis and recurrence patterns in endometrial cancer. *J Surg Oncol*. 2015; 112(6):669–76. Epub 2015/09/22. <https://doi.org/10.1002/jso.24049> PMID: 26391212.
4. Sari ME, Yalcin İ, Sahin H, Meydanli MM, Gungor T. Risk factors for paraaortic lymph node metastasis in endometrial cancer. *Int J Clin Oncol*. 2017; 22(5):937–44. Epub 2017/05/18. <https://doi.org/10.1007/s10147-017-1139-5> PMID: 28523533.
5. Zeimet AG, Reimer D, Huszar M, Winterhoff B, Puistola U, Azim SA, et al. L1CAM in early-stage type I endometrial cancer: results of a large multicenter evaluation. *J Natl Cancer Inst*. 2013; 105(15):1142–50. <https://doi.org/10.1093/jnci/djt144> PMID: 23781004.

6. Bosse T, Nout RA, Stelloo E, Dreef E, Nijman HW, Jürgenliemk-Schulz IM, et al. L1 cell adhesion molecule is a strong predictor for distant recurrence and overall survival in early stage endometrial cancer: pooled PORTEC trial results. *Eur J Cancer*. 2014; 50(15):2602–10. <https://doi.org/10.1016/j.ejca.2014.07.014> PMID: 25126672.
7. Dellinger TH, Smith DD, Ouyang C, Warden CD, Williams JC, Han ES. L1CAM is an independent predictor of poor survival in endometrial cancer—An analysis of The Cancer Genome Atlas (TCGA). *Gynecol Oncol*. 2016; 141(2):336–40. Epub 2016/02/06. <https://doi.org/10.1016/j.ygyno.2016.02.003> PMID: 26861585; PubMed Central PMCID: PMC5868342.
8. Pasanen A, Tuomi T, Isola J, Staff S, Bützow R, Loukovaara M. L1 Cell Adhesion Molecule as a Predictor of Disease-Specific Survival and Patterns of Relapse in Endometrial Cancer. *Int J Gynecol Cancer*. 2016; 26(8):1465–71. <https://doi.org/10.1097/IGC.0000000000000801> PMID: 27648714.
9. FIGO. FIGO staging for carcinoma of the vulva, cervix, and corpus uteri. *Int J Gynaecol Obstet*. 2014; 125(2):97–8. <https://doi.org/10.1016/j.ijgo.2014.02.003> PMID: 24630859.
10. Colombo N, Creutzberg C, Amant F, Bosse T, González-Martín A, Ledermann J, et al. ESMO-ESGO-ESTRO Consensus Conference on Endometrial Cancer: Diagnosis, Treatment and Follow-up. *Int J Gynecol Cancer*. 2016; 26(1):2–30. <https://doi.org/10.1097/IGC.0000000000000609> PMID: 26645990; PubMed Central PMCID: PMC4679344.
11. Kurman RJ CM, Herrington CS, Young RH. WHO Classification of Tumours of Female Reproductive Organs. Lyon: IARC; 2014. 307 p.
12. Roma AA, Rybicki LA, Barbuto D, Euscher E, Djordjevic B, Frauenhoffer E, et al. Risk factor analysis of recurrence in low-grade endometrial adenocarcinoma. *Hum Pathol*. 2015; 46(10):1529–39. Epub 2015/06/30. <https://doi.org/10.1016/j.humpath.2015.06.015> PMID: 26264257.
13. Salvesen HB, Haldorsen IS, Trovik J. Markers for individualised therapy in endometrial carcinoma. *Lancet Oncol*. 2012; 13(8):e353–61. [https://doi.org/10.1016/S1470-2045\(12\)70213-9](https://doi.org/10.1016/S1470-2045(12)70213-9) PMID: 22846840.
14. Kommoss F, Grevenkamp F, Bunz AK, Taran FA, Fend F, Brucker SY, et al. L1CAM: amending the "low-risk" category in endometrial carcinoma. *J Cancer Res Clin Oncol*. 2017; 143(2):255–62. Epub 2016/09/30. <https://doi.org/10.1007/s00432-016-2276-3> PMID: 27695947.
15. Morice P, Leary A, Creutzberg C, Abu-Rustum N, Darai E. Endometrial cancer. *Lancet*. 2016; 387(10023):1094–108. [https://doi.org/10.1016/S0140-6736\(15\)00130-0](https://doi.org/10.1016/S0140-6736(15)00130-0) PMID: 26354523.
16. AJCC. Cancer Staging Manual. 8th ed: Springer Nature; 2017.
17. Anton C, di Fávero GM, Köhler C, Carvalho FM, Baracat EC, Carvalho JP. Surgical treatment of endometrial cancer in developing countries: reasons to consider systematic two-step surgical treatment. *Clinics (Sao Paulo)*. 2015; 70(7):470–4. [https://doi.org/10.6061/clinics/2015\(07\)02](https://doi.org/10.6061/clinics/2015(07)02) PMID: 26222815; PubMed Central PMCID: PMC4498149.
18. Zhu M, Jia N, Huang F, Liu X, Zhao Y, Tao X, et al. Whether intermediate-risk stage 1A, grade 1/2, endometrioid endometrial cancer patients with lesions larger than 2 cm warrant lymph node dissection? *BMC Cancer*. 2017; 17(1):696. Epub 2017/10/23. <https://doi.org/10.1186/s12885-017-3671-0> PMID: 29061125; PubMed Central PMCID: PMC5654059.
19. Mariani A, Webb MJ, Keeney GL, Haddock MG, Calori G, Podratz KC. Low-risk corpus cancer: is lymphadenectomy or radiotherapy necessary? *Am J Obstet Gynecol*. 2000; 182(6):1506–19. <https://doi.org/10.1067/mob.2000.107335> PMID: 10871473.
20. AlHilli MM, Podratz KC, Dowdy SC, Bakkum-Gamez JN, Weaver AL, McGree ME, et al. Risk-scoring system for the individualized prediction of lymphatic dissemination in patients with endometrioid endometrial cancer. *Gynecol Oncol*. 2013; 131(1):103–8. <https://doi.org/10.1016/j.ygyno.2013.06.037> PMID: 23845691.
21. Wang X, Li L, Cragun JM, Chambers SK, Hatch KD, Zheng W. Assessment of the Role of Intraoperative Frozen Section in Guiding Surgical Staging for Endometrial Cancer. *Int J Gynecol Cancer*. 2016; 26(5):918–23. <https://doi.org/10.1097/IGC.0000000000000692> PMID: 27051054.
22. Kandath C, Schultz N, Cherniack AD, Akbani R, Liu Y, Shen H, et al. Integrated genomic characterization of endometrial carcinoma. *Nature*. 2013; 497(7447):67–73. <https://doi.org/10.1038/nature12113> PMID: 23636398; PubMed Central PMCID: PMC3704730.
23. Talhouk A, McConechy MK, Leung S, Yang W, Lum A, Senz J, et al. Confirmation of ProMisE: A simple, genomics-based clinical classifier for endometrial cancer. 2017; 123(5):802–13. Epub 2017/01/06. <https://doi.org/10.1002/cncr.30496> PMID: 28061006.
24. Talhouk A, McAlpine JN. New classification of endometrial cancers: the development and potential applications of genomic-based classification in research and clinical care. *Gynecol Oncol Res Pract*. 2016; 3:14. Epub 2016/12/13. <https://doi.org/10.1186/s40661-016-0035-4> PMID: 27999680; PubMed Central PMCID: PMC5154099.

25. Piulats JM, Guerra E, Gil-Martín M, Roman-Canal B, Gatius S, Sanz-Pamplona R, et al. Molecular approaches for classifying endometrial carcinoma. *Gynecol Oncol*. 2017; 145(1):200–7. Epub 2016/12/29. <https://doi.org/10.1016/j.ygyno.2016.12.015> PMID: 28040204.
26. Talhouk A, Hoang LN, McConechy MK, Nakonechny Q, Leo J, Cheng A, et al. Molecular classification of endometrial carcinoma on diagnostic specimens is highly concordant with final hysterectomy: Earlier prognostic information to guide treatment. *Gynecol Oncol*. 2016; 143(1):46–53. Epub 2016/07/14. <https://doi.org/10.1016/j.ygyno.2016.07.090> PMID: 27421752; PubMed Central PMCID: PMC5521211.
27. Van Gool IC, Stelloo E, Nout RA, Nijman HW, Edmondson RJ, Church DN, et al. Prognostic significance of L1CAM expression and its association with mutant p53 expression in high-risk endometrial cancer. *Mod Pathol*. 2016; 29(2):174–81. Epub 2016/01/08. <https://doi.org/10.1038/modpathol.2015.147> PMID: 26743472.
28. Tangen IL, Kopperud RK, Visser NC, Staff AC, Tingulstad S, Marcickiewicz J, et al. Expression of L1CAM in curettage or high L1CAM level in preoperative blood samples predicts lymph node metastases and poor outcome in endometrial cancer patients. *Br J Cancer*. 2017; 117(6):840–7. Epub 2017/07/27. <https://doi.org/10.1038/bjc.2017.235> PMID: 28751757; PubMed Central PMCID: PMC5589986.
29. van Esterik M, Van Gool IC, de Kroon CD, Nout RA, Creutzberg CL, Smit VTHB, et al. Limited impact of intratumour heterogeneity on molecular risk assignment in endometrial cancer. *Oncotarget*. 2017; 8(15):25542–51. <https://doi.org/10.18632/oncotarget.16067> PMID: 28424422; PubMed Central PMCID: PMC5421949.
30. Cusano E, Myers V, Samant R, Sudai T, Keller A, Le T, et al. Prognostic Significance of Lymphovascular Space Invasion in the Absence of Lymph Node Metastases in Early-Stage Endometrial Cancer. *Int J Gynecol Cancer*. 2018; 28(5):890–4. <https://doi.org/10.1097/IGC.0000000000001229> PMID: 29538248.
31. dos Reis R, Burzawa JK, Tsunoda AT, Hosaka M, Frumovitz M, Westin SN, et al. Lymphovascular Space Invasion Portends Poor Prognosis in Low-Risk Endometrial Cancer. *Int J Gynecol Cancer*. 2015; 25(7):1292–9. <https://doi.org/10.1097/IGC.0000000000000490> PMID: 26067863; PubMed Central PMCID: PMC5459160.