

# Prognosis of Acute Intracranial Atherosclerosis-Related Occlusion after Endovascular Treatment

Jin Soo Lee,<sup>a</sup> Seong-Joon Lee,<sup>a</sup> Joon Sang Yoo,<sup>b</sup> Jeong-Ho Hong,<sup>b</sup> Chang-Hyun Kim,<sup>c</sup> Yong-Won Kim,<sup>d,e</sup> Dong-Hun Kang,<sup>e,f</sup> Yong-Sun Kim,<sup>e</sup> Ji Man Hong,<sup>a</sup> Jin Wook Choi,<sup>g</sup> Bruce Ovbiagele,<sup>h</sup> Andrew M. Demchuk,<sup>i</sup> Sung-Il Sohn,<sup>b</sup> Yang-Ha Hwang<sup>d</sup>

<sup>a</sup>Department of Neurology, Ajou University Medical Center, Ajou University School of Medicine, Suwon, Korea

<sup>b</sup>Department of Neurology, Keimyung University Dongsan Medical Center, Keimyung University School of Medicine, Daegu, Korea

<sup>c</sup>Department of Neurosurgery, Keimyung University Dongsan Medical Center, Keimyung University School of Medicine, Daegu, Korea

<sup>d</sup>Department of Neurology, Kyungpook National University Hospital, School of Medicine, Kyungpook National University, Daegu, Korea

<sup>e</sup>Department of Radiology, Kyungpook National University Hospital, School of Medicine, Kyungpook National University, Daegu, Korea

<sup>f</sup>Department of Neurosurgery, Kyungpook National University Hospital, School of Medicine, Kyungpook National University, Daegu, Korea

<sup>g</sup>Department of Radiology, Ajou University Medical Center, Ajou University School of Medicine, Suwon, Korea

<sup>h</sup>Department of Neurology, Medical University of South Carolina, Charleston, SC, USA

<sup>i</sup>Department of Clinical Neurosciences and Radiology, Hotchkiss Brain Institute, University of Calgary, Calgary, AB, Canada

**Background and Purpose** Little is known about prognosis after endovascular therapy (EVT) for acute large artery occlusion (LAO) caused by underlying intracranial atherosclerotic stenosis (ICAS). Therefore, we investigated the prognosis following EVT according to the underlying etiology of LAO.

**Methods** Patients from the Acute Stroke due to Intracranial Atherosclerotic occlusion and Neurointervention-Korean Retrospective (ASIAN KR) registry (n=720) were included if their occlusion was in the intracranial anterior circulation and their onset-to-puncture time was <24 hours. Occlusion was classified according to etiology as follows: no significant stenosis after recanalization (Embolitic group), and fixed significant focal stenosis in the occlusion site with flow impairment or re-occlusion observed during EVT (ICAS group). Patients were excluded when significant extracranial carotid lesions existed, and when the intracranial occlusion was intractable to EVT so that the etiology was undetermined. The effect of angiographic etiologic classification on outcomes was evaluated using multivariable analysis that was adjusted for potential confounders.

**Results** Among eligible patients (n=520), 421 and 99 were classified in the Embolic and ICAS groups, respectively. Patients in the Embolic and ICAS groups had similar successful reperfusion rates with EVT (79.6% vs. 76.8%,  $P=0.537$ ) and 3-month functional independence (54.5% vs. 45.5%,  $P=0.104$ ). In multivariable analysis, ICAS-related occlusion (odds ratio, 0.495; 95% confidence interval, 0.269 to 0.913;  $P=0.024$ ) showed poorer 3-month functional independence compared to embolic occlusion.

**Conclusions** After EVT, patients with acute ICAS-related occlusion have relatively poor functional outcomes compared to those with embolic occlusion. Novel strategies need to be developed to improve EVT outcomes for ICAS occlusion.

**Keywords** Cerebral infarction; Atherosclerosis; Embolism; Thrombectomy; Reperfusion; Treatment outcome

**Correspondence:** Yang-Ha Hwang  
Department of Neurology, Kyungpook National University Hospital, School of Medicine, Kyungpook National University, 130 Dongdeok-ro, Jung-gu, Daegu 41944, Korea  
Tel: +82-53-420-5758  
Fax: +82-53-422-4265  
E-mail: yangha.hwang@gmail.com

**Co-correspondence:** Sung-Il Sohn  
Department of Neurology, Keimyung University Dongsan Medical Center, Brain Research Institute, Keimyung University School of Medicine, 56 Dalseong-ro, Jung-gu, Daegu 41931, Korea  
Tel: +82-53-250-7075  
Fax: +82-53-250-7830  
E-mail: sungil.sohn@gmail.com

Received: June 2, 2018  
Revised: September 3, 2018  
Accepted: September 4, 2018

## Introduction

Several clinical trials have shown that endovascular treatment (EVT) using newer thrombectomy devices within an onset-to-puncture time of 6 to 12 hours has efficacy and safety superior to those of intravenous thrombolysis.<sup>1-5</sup> Trials conducted more recently have revealed that EVT has substantial efficacy even within an onset-to-randomization time of 16 to 24 hours in selected patients.<sup>6,7</sup> Although clinical practice guidelines have now been updated to reflect these advancements,<sup>8-11</sup> the outcomes of EVT for acute large artery occlusion (LAO) presumably due to intracranial atherosclerotic stenosis (ICAS), which is encountered more frequently in Asian patients, have not yet been adequately addressed.

In acute occlusion of the posterior circulation, the prognosis of ICAS-related occlusion is reportedly worse than that of embolic occlusion.<sup>12</sup> In the anterior circulation, results of single-center anecdotal studies have shown comparable prognosis in ICAS-related occlusion.<sup>13,14</sup> However, the ICAS population in these studies was younger with lower initial severity; therefore, large multicenter studies that include patients with ICAS-related occlusion from endemic regions and those that control for confounding factors are warranted.

Therefore, in the present study, we retrospectively analyzed the prognosis of EVT for ICAS-related versus embolic occlusion of the anterior circulation by using prospectively collected data from a registry of information on patients at three comprehensive stroke centers in Korea.

## Methods

### Patient enrollment

The Acute Stroke due to Intracranial Atherosclerotic occlusion and Neurointervention-Korean Retrospective (ASIAN KR) registry was assembled for an observational study of consecutive patients aged  $\geq 18$  years who received EVT for the treatment of acute ischemic stroke due to intracranial and/or extracranial large vessel occlusion. Patient data were collected from three comprehensive stroke centers in Korea between January 2011 and February 2016.<sup>15</sup> Some patients in the registry might have been included in previous pilot studies performed by each hospital.<sup>13,14</sup> All clinical data were de-identified and allocated study identification numbers. The data collection protocol was approved by the Institutional Review Board of each respective hospital and was implemented in accordance with the ethical standards of the 1964 Declaration of Helsinki and its later amendments.

### Etiologic classification of target occlusive lesions

The etiology of target large vessel occlusion (i.e., embolic or ICAS-related occlusion) was determined by core laboratory imaging analyses based on angiographic diagnosis according to previous reports (Y.H.H. & J.S.L.).<sup>12,14,16</sup> In brief, after confirmation of arterial occlusion, uncommon cerebral arterial diseases such as dissection, moyamoya disease, and vasculitis were evaluated. If the occluded vessel was completely recanalized after primary thrombectomy, the etiology was classified as embolic occlusion (Embolic group). A remnant stenosis of  $>70\%$ , or a lesser degree of stenosis with a tendency toward reocclusion and/or flow impairment during the procedure, was classified as ICAS-related occlusion (ICAS group). If grading was difficult to determine or discordant, consensus was reached by the two graders (Y.H.H and J.S.L.). In addition, this mechanism was further evaluated and could be amended by repeat angiography following EVT during admission (J.S.Y.). Consequently, Embolic and ICAS groups were included in the analyses.

### Inclusion and exclusion criteria

For the current study, the following inclusion criteria were applied: (1) acute intracranial LAO of the anterior circulation and (2) onset-to-puncture time of  $<1,440$  minutes. The onset time was defined as last normal seen. Internal carotid artery (ICA) T, middle cerebral artery (MCA) M1, and MCA M2 occlusions were included in this study. Patients were excluded if (1) extracranial balloon angioplasty or stenting was performed; (2) angiographic etiology was classified as dissection, extracranial ICA stenosis-related, or undetermined; or (3) the occlusion was intractable to mechanical thrombectomy so that the etiology could not be differentiated.

### Evaluations

Premorbid and 3-month modified Rankin Scale (mRS) scores and National Institutes of Health Stroke Scale (NIHSS) scores at admission were analyzed. A good outcome was defined as a 3-month mRS score of 0 to 2 or no change compared to the premorbid mRS. Results of routine laboratory tests were also collected. After de-identification and blinding of clinical data, stroke neurologists, neuroradiologists, and neurointerventionists with expertise in acute stroke management performed core laboratory imaging analyses to ensure consistent grading and to eliminate possible bias. The locations of initial large vessel occlusions were identified on baseline computed tomography (CT) or magnetic resonance angiography (S.J.L.). Alberta Stroke Program Early CT Scores (ASPECTS) were determined using noncontrast CT (S.I.S.). Final reperfusion was evaluated according to the modified treatment in cerebral ischemia (mTICI)

grade.<sup>17</sup> Successful reperfusion was defined as mTICI grades 2b–3 (J.S.L.). Final recanalization was evaluated with arterial occlusive lesion grade.<sup>17</sup> Post-procedural intracerebral hemorrhages were classified in accordance with the criteria defined by the European Cooperative Acute Stroke Study (S.I.S.).<sup>18</sup> Subarachnoid hemorrhage (SAH) was classified using the modified Fisher scale (S.I.S.).<sup>19</sup> Serious hemorrhagic complications were defined as parenchymal hematoma type 2 and/or SAH grades 3 to 4 (thick SAH). Reocclusion was evaluated using repeat angiography performed during admission by comparing it with the last angiography performed during EVT (J.S.Y.).

### Endovascular procedures

The type of EVT procedure was selected at the discretion of the treating physician. The direct aspiration method and stent retrieval were routinely used. The direct aspiration method refers to a forced arterial suction thrombectomy that uses the Penumbra system (Penumbra Inc., Alameda, CA, USA).<sup>20,21</sup> Stent retrieval refers to clot removal by capturing and removing the thrombus with a stent retriever such as the Solitaire AB/FR (Medtronic, Irvine, CA, USA) or Trevo (Stryker, Kalamazoo, MI, USA).<sup>22–24</sup> Balloon guide catheters, adjuvant lytic infusion, intracranial or extracranial angioplasty, and/or stenting were implemented as needed.

### Statistical analysis

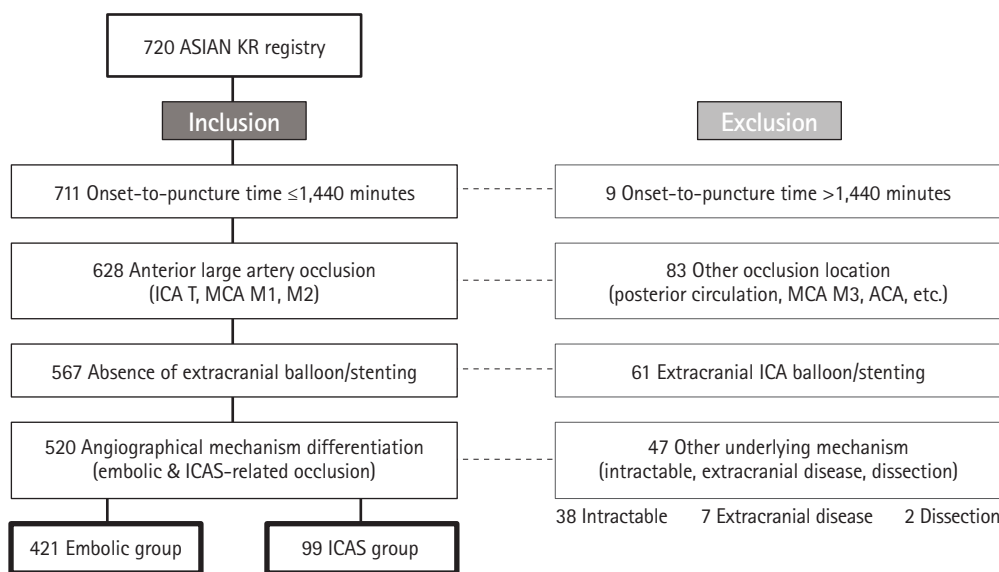
Comparative analyses between the Embolic and ICAS groups were performed for clinical characteristics, imaging findings, and treatment outcomes. Differences among the groups were

analyzed using chi-square tests for categorical variables, Mann-Whitney tests for ordinal variables, or t-tests for continuous variables. To evaluate the effect of underlying etiology on good outcomes, we performed a multivariable analysis that was adjusted for the following potential confounders: age, sex, premorbid mRS, initial NIHSS score, pretreatment ASPECTS, intravenous tissue plasminogen activator use, onset-to-puncture time (minute), procedure time (minute), final successful reperfusion, and serious hemorrhagic complications. An interaction between underlying etiology and some influential variables on patient outcomes was also evaluated with adjustment of the same confounding variables except procedure time. Regression lines of embolic occlusion and ICAS-related occlusion were drawn for the probability of good outcomes versus onset-to-puncture time, age, NIHSS score, and ASPECTS (unadjusted). A  $P < 0.05$  was considered significant. Statistical analysis was performed using the SPSS statistical package version 22.0 (IBM Co., Armonk, NY, USA).

## Results

### Classification process and final grouping

Among the 720 patients enrolled in the registry, 520 were included in the current study (Figure 1). We performed a blinded evaluation of the underlying etiology, using EVT angiographies combined with the evaluation of repeat angiographies during admission following EVT (608 of 720 patients). After exclusion criteria were applied regarding onset-to-puncture time, occlu-



**Figure 1.** Study flow chart. ASIAN KR, Acute Stroke due to Intracranial Atherosclerotic occlusion and Neurointervention-Korean Retrospective; ICA, internal carotid artery; ICAS, intracranial atherosclerotic stenosis; MCA, middle cerebral artery; ACA, anterior cerebral artery.

sion location, and extracranial ICA treatment, 567 patients were included. Among these, the classification was changed into other category from etiology based on EVT angiography in 19 patients after evaluation of repeat angiography. Among the 19 patients, two were changed from ICAS etiology to embolism while 11 were changed from embolism to ICAS. Among intracranial cases, one patient had proven ICAS while five had embolism. Finally, the Embolic and ICAS-related groups comprised 421 and 99 patients, respectively.

### Differences in baseline characteristics

Table 1 describes the baseline clinical and laboratory data of the groups. Compared with the Embolic group patients, the ICAS group patients were significantly younger and mostly men, with a higher prevalence of a history of smoking. In the ICAS group, occlusive lesions were relatively more frequent in the MCA M1

portion, and these patients presented with significantly lower initial NIHSS scores than those in the Embolic group. In terms of laboratory data, the patients with ICAS presented with significantly higher levels of total cholesterol, triglycerides, and low density lipoprotein cholesterol than those in the Embolic group, while levels of glucose, glycosylated hemoglobin, and inflammation markers did not differ between groups.

### Differences in treatment and outcomes

Table 2 shows the comparison of treatments and outcomes according to etiological classification. Compared to the Embolic group, the ICAS group had a significantly longer median onset-to-puncture time (median, 235 and 320 minutes,  $P=0.002$ ), and median total procedure time (median, 55 and 68 minutes,  $P=0.001$ ), reflecting the complexity of the procedure. Concerning the final endovascular outcomes, the rates of successful

**Table 1.** Comparison of baseline characteristics and risk factors among groups

Characteristic	Embolic group (n=421)	ICAS group (n=99)	P
Age (yr)	68.2±12.4	64.8±13.7	0.017
Male sex	208 (49.4)	60 (60.6)	0.045
Premorbid mRS score	0 (0–0)	0 (0–0)	0.971
Initial NIHSS score	17 (13–21)	15 (11–19)	0.045
ASPECTS on noncontrast CT	7 (4–9)	8 (5–9)	0.227
Location of occlusive lesions on baseline angiography			<0.001
ICA T	170 (40.4)	21 (21.2)	
MCA M1	205 (48.7)	75 (75.8)	
MCA M2	46 (10.9)	3 (3.0)	
Hypertension	257 (61.0)	59 (59.6)	0.790
Diabetes mellitus	96 (22.8)	27 (27.3)	0.346
Coronary artery occlusive disease	53 (12.6)	7 (7.1)	0.122
Current smoking	84 (20.0)	31 (31.3)	0.014
Atrial fibrillation	267 (63.4)	24 (24.2)	<0.001
Prior antiplatelet	131 (31.1)	16 (16.2)	0.003
Prior anticoagulant	71 (16.9)	7 (7.1)	0.014
Laboratory data			
Blood glucose on admission (mg/dL)	137.6±52.0	143.4±55.1	0.322
HbA1c (%)	6.2±1.1	6.2±1.2	0.711
Total cholesterol (mg/dL)	163.0±52.2	180.2±42.5	0.002
Triglyceride (mg/dL)	101.3±55.0	130.7±141.7	0.045
HDL-C (mg/dL)	47.2±21.6	44.7±10.8	0.277
LDL-C (mg/dL)	96.6±34.4	114.5±37.8	<0.001
ESR (mm/hr)	14.1±14.5	15.0±14.7	0.563
CRP (mg/dL)	0.68±1.70	1.12±3.87	0.269

Values are presented as mean±standard deviation, number (%), or median (interquartile range).

ICAS, intracranial atherosclerotic stenosis; mRS, modified Rankin Scale; NIHSS, National Institutes of Health Stroke Scale; ASPECTS, Alberta Stroke Program Early CT Scores; CT, computed tomography; ICA, internal carotid artery; MCA, middle cerebral artery; HbA1c, glycosylated hemoglobin; HDL-C, high density lipoprotein cholesterol; LDL-C, low density lipoprotein cholesterol; ESR, erythrocyte sedimentation rate; CRP, C-reactive protein.

reperfusion were similar in the Embolic and ICAS groups (79.6% vs. 76.0%,  $P=0.484$ ).

No significant difference was observed between the groups in the grades and frequency of post-procedural intracerebral hemorrhage and the rate of serious hemorrhagic complications. On repeat angiography, reocclusion occurred in nine of 362 patients (2.5%) in the Embolic group and 14 of 89 patients (15.7%) in the ICAS group, based on the last angiography performed during EVT ( $P<0.001$ ).

Good outcomes at 3 months were achieved in 54.5% and 45.5% of patients in the Embolic and ICAS groups, respectively

( $P=0.104$ ), and the ordinal distribution of mRS scores was not significantly different between these groups ( $P=0.629$ ) (Figure 2). However, when angiographic etiology was included along with potential confounders in a logistic regression model to predict good outcomes at 3 months, the prognosis of ICAS-related occlusion was worse than that of embolic occlusion (odds ratio, 0.495; 95% confidence interval, 0.269 to 0.913;  $P=0.024$ ) (Table 3). An interaction of underlying etiology on patient outcomes was observed with procedure time per 30 minutes ( $P=0.046$ ), but not with the number of EVT techniques ( $P=0.214$ ).

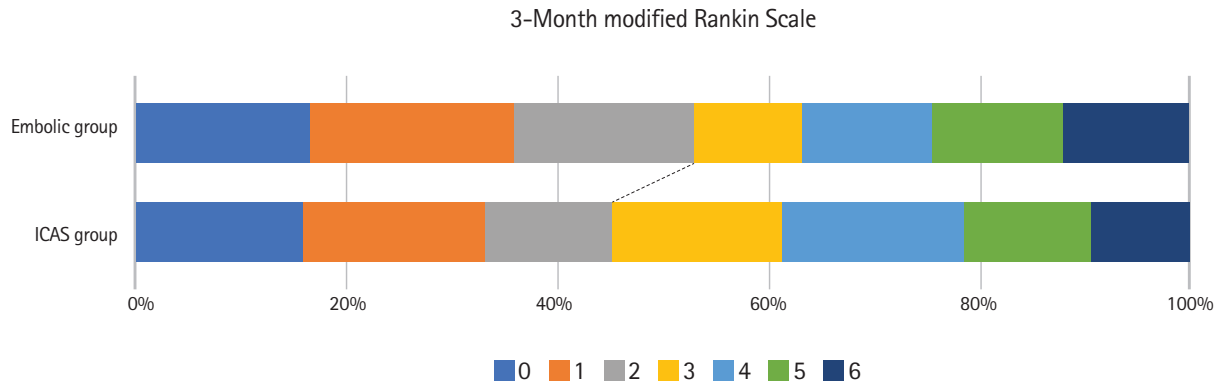
Graphs of onset-to-puncture time versus the probability of

**Table 2.** Comparison of treatments and outcomes among groups

Variable	Embolic group	ICAS group	P
Onset-to-puncture time (min)	235 (165–374)	320 (245–560)	0.002
Procedure time (min)	55 (40–83)	68 (49–97)	0.001
Intravenous tPA	235 (55.8)	46 (46.5)	0.093
Balloon guide catheter usage	311 (73.9)	67 (67.7)	0.213
Stent retriever usage	248 (58.9)	79 (79.8)	<0.001
Direct aspiration usage	281 (66.7)	57 (57.6)	0.085
Intracranial stenting	9 (2.1)	13 (13.1)	<0.001
Intracranial ballooning without stenting	2 (0.5)	7 (7.1)	<0.001
Number of techniques	1 (1–2)	2 (2–3)	<0.001
Final reperfusion grade (mTICI)			0.018
Grade 0	7 (1.7)	6 (6.1)	
Grade 1	8 (1.9)	5 (5.1)	
Grade 2a	71 (16.9)	12 (12.1)	
Grade 2b	209 (49.6)	42 (42.4)	
Grade 3	126 (29.9)	34 (34.3)	
Successful reperfusion (mTICI 2b–3)	335 (79.6)	76 (76.8)	0.537
Final recanalization grade (AOL)			<0.001
Grade 0	6 (1.4)	7 (7.1)	
Grade 1	9 (2.1)	23 (23.2)	
Grade 2	31 (7.4)	54 (54.5)	
Grade 3	375 (89.1)	15 (15.2)	
Intracerebral hemorrhage			0.288
No hemorrhage	272 (64.6)	74 (74.7)	
HT type 1	33 (7.8)	6 (6.1)	
HT type 2	48 (11.4)	10 (10.1)	
PH type 1	34 (8.1)	3 (3.0)	
PH type 2	34 (8.1)	6 (6.1)	
Serious hemorrhagic complications	45 (10.7)	7 (7.1)	0.280
Reocclusion on repeat angiography	9 (2.5)	14 (15.7)	<0.001
3-Month mRS score	2 (1–4)	3 (1–4)	0.629
Good outcomes at 3 months	229 (54.5)	45 (45.5)	0.104

Values are presented as median (interquartile range) or number (%).

ICAS, intracranial atherosclerotic stenosis; tPA, tissue plasminogen activator; mTICI, modified treatment in cerebral ischemia; AOL, arterial occlusive lesion; HT, hemorrhagic transformation; PH, parenchymal hematoma; mRS, modified Rankin Scale.



**Figure 2.** Modified Rankin Scale (mRS) scores at 3 months. Without adjustments, the distribution of mRS scores and the frequency of good outcomes did not differ between the Embolic and intracranial atherosclerotic stenosis (ICAS) groups.

**Table 3.** Results of logistic regression model for evaluating the association between occlusion etiology and good outcome

Variable	Odds ratio (95% CI)	P
Age (yr)	0.945 (0.925–0.965)	<0.001
Male sex	0.989 (0.613–1.596)	0.964
Premorbid mRS score	0.578 (0.412–0.810)	0.001
Initial NIHSS score	0.897 (0.853–0.942)	<0.001
Baseline intracranial occlusion		0.398
ICA T	Reference	
MCA M1	1.264 (0.757–2.111)	0.371
MCA M2	1.732 (0.747–4.018)	0.201
ASPECTS	1.313 (1.200–1.436)	<0.001
Intravenous tPA use	0.963 (0.566–1.636)	0.889
Onset to puncture (min)	0.999 (0.997–1.000)	0.021
Procedure time (min)	0.981 (0.974–0.988)	<0.001
Successful reperfusion	2.451 (1.359–4.418)	0.003
PH2 or SAH 3–4	0.242 (0.094–0.619)	0.003
Underlying etiology (ICAS vs. embolic occlusion)	0.495 (0.269–0.913)	0.024

CI, confidence interval; mRS, modified Rankin Scale; NIHSS, National Institutes of Health Stroke Scale; ICA, internal carotid artery; MCA, middle cerebral artery; ASPECTS, Alberta Stroke Program Early CT Scores; tPA, tissue plasminogen activator; PH, parenchymal hematoma; SAH, subarachnoid hemorrhage; ICAS, intracranial atherosclerotic stenosis.

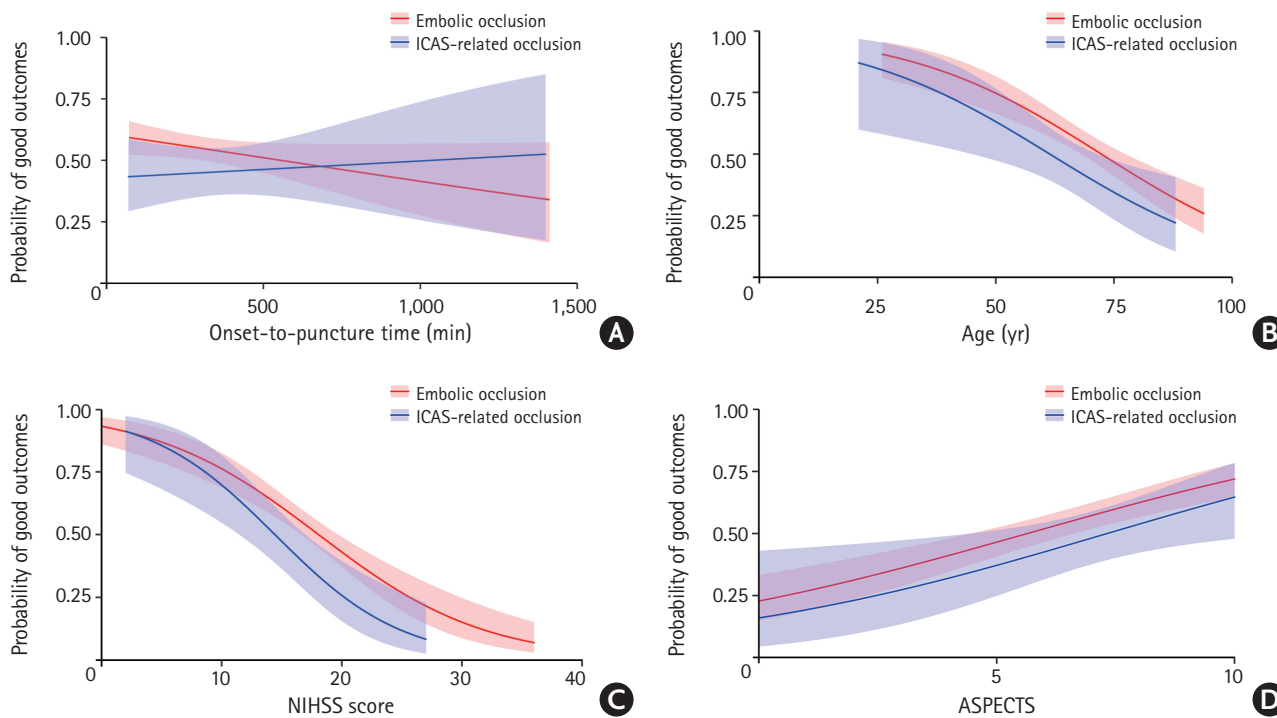
good outcomes at 3 months revealed that the pattern of regression lines varied between embolic and ICAS-related occlusion (Figure 3A). While the probability of good outcomes in patients with embolic occlusion declined as onset-to-puncture time increased, the probability of good outcomes in patients with ICAS-related occlusion did not decline but tended to increase with an increase in onset-to-puncture time. As for age, NIHSS score, and ASPECTS, the probability tended to be lower in the ICAS group than in the Embolic group, although the differences were not statistically significant (Figure 3B–D).

Supplementary Document, in which patients with atrial fibrillation were excluded from the ICAS group, are shown in the

online site. The results from patients with ICAS-related occlusion but without atrial fibrillation are similar to the above results obtained from patients with ICAS occlusion with or without atrial fibrillation.

## Discussion

The major finding of the current study was that the prognosis of EVT for ICAS-related occlusion in the anterior circulation was relatively worse than that of EVT for embolic occlusion, indicating that better therapeutic approaches are required for patients with ICAS-related occlusion. Compared to patients



**Figure 3.** Relationship between good outcomes and well-known predictors in endovascular treatment for acute ischemic stroke and comparison between embolic and intracranial atherosclerotic stenosis (ICAS)-related occlusion. (A) The probability of good 3-month outcomes tended to decline in the Embolic group but stayed stable in the ICAS group as onset-to-puncture time increased up to 24 hours. (B–D) The probability of good outcomes appeared to be somewhat less in ICAS-related occlusion than in embolic occlusion; however, this was not statistically significant. NIHSS, National Institutes of Health Stroke Scale; ASPECTS, Alberta Stroke Program Early CT Scores.

with embolic occlusion, those with ICAS-related occlusion had lower initial NIHSS score and milder baseline ASPECTS, and were younger; these factors are known to be associated with good outcomes after EVT. Although the absolute rates of successful reperfusion were similar between the ICAS and Embolic groups, the outcomes of ICAS-related occlusion were worse than expected after adjustment for major confounders.

The relatively poor outcome in the ICAS group is mainly attributable to longer procedure time, reflecting the procedure complexity, and the higher rate of reocclusion. From our analysis, an interaction of underlying etiology and procedure time (per 30 minutes) was observed with patient outcomes. A meta-analysis from recent endovascular trials showed that time interval is more important in the hospital (door to reperfusion or image to reperfusion) than before hospital arrival (symptom onset to hospital arrival).<sup>25</sup> Procedure time is a major portion of the in-hospital time; thus, the longer procedure time in the ICAS group could have contributed to the worse outcomes. Another factor is reocclusion tendency in ICAS-related occlusion. Reocclusion after EVT can lead to early neurological deterioration.<sup>14,26</sup> Reocclusion was more frequently seen in the ICAS group than in the Embolic group. Moreover, during EVT, ICAS-

related occlusion tends to have a high rate of refractoriness to mechanical thrombectomy due to repeat reocclusion, which necessitates additional rescue treatments such as intracranial stenting or lytic treatments, and eventually delays final reperfusion time.<sup>27-31</sup>

Nevertheless, considering the relatively high rate of good outcomes (45.3%) in the ICAS group, which is similar to the 46% (33% to 71%) in pooled data from five early-window trials (HERMES) and 47% (45% to 49%) in two late-window trials,<sup>32,33</sup> EVT using contemporary devices and methods can achieve substantial performance and satisfactory outcomes even for ICAS-related occlusions. This is particularly relevant to clinical practice in Asian countries, because Asian patients, who have a higher incidence of ICAS-related occlusions,<sup>16</sup> are significantly underrepresented in successful EVT trials.<sup>1-7</sup>

The probability of good outcomes did not decline in these patients with an onset-to-puncture time of up to 24 hours, whereas it declined in patients with embolic occlusion and an increase in onset-to-puncture time. ICAS-related occlusion may have more opportunities for EVT because the ICAS prognosis patterns are similar to those associated with the "late window paradox" observed in recent trials conducted to dem-

onstrate the efficacy of EVT in the late window (up to 24 hours onset-to-randomization time).<sup>6,7,33</sup> Previous studies have indicated that good outcomes were unlikely in patients with evidently poor collaterals,<sup>34,35</sup> patients with both rapidly and slowly failing collaterals can be ideal candidates for EVT within the usual early window (less than 60 to 300 minutes of onset-to-puncture time).<sup>35,36</sup> In patients with universally good collaterals, tiny-to-small infarcts are expected; therefore, these patients were not considered good candidates for EVT.<sup>35</sup> However, recent late-window trials have shown an absolute increase of 32% in good outcome rates compared to 19% in early window trials.<sup>32,33</sup> Patients with preformed ICAS can have universally good collaterals, which are developed by hypoperfusion with stenosis.<sup>37</sup> In an anecdotal study, the baseline infarct core volume was significantly lower in patients with ICAS-related occlusion compared to those with embolic occlusion.<sup>38</sup> Compared to early window trials using target artery occlusion and small core volume mostly based on noncontrast CT such as ASPECTS, these late window trials are based on infarct core volume with clinical or perfusion mismatch. Further imaging studies are warranted to incorporate this concept of "late window paradox" in the treatment of ICAS-related occlusion.

Although imaging predictors should be studied further, differences in baseline characteristics including demographics and risk factors may differentiate ICAS-related occlusion from embolic occlusion. Besides younger age and male predominance, MCA M1 occlusion was more frequent among locations of occlusive lesions in patients with ICAS. Well-known risk factors for atherosclerosis were also documented in our patients with ICAS, as current smokers were more frequent, and levels of total and low-density cholesterol and triglycerides were higher. Our study members plan to further investigate differential factors of various imaging tools. In addition, better treatment methods for ICAS-related occlusion will be further evaluated using the ASIAN KR registry.

The study has several limitations. First, this was a retrospective study with data from three Korean centers and included patients treated with somewhat outdated devices such as the first-generation Penumbra system. Thus, the results of this study are not generalizable to the entire Korean or Asian population or to contemporary treatments. Second, based on the analyses of a current real-world study, patients whose occlusion failed to open were excluded. If the intractable cases accounted for more patients with embolic occlusion, i.e., those with greater age and higher initial NIHSS scores, the poor outcomes in the Embolic group might be underestimated. However, those with ICAS-related occlusion had longer onset-to-puncture and procedure times and these important confound-

ing factors had been adjusted by logistic regression analysis, so it is believed that the current results are not significantly deviated. Lastly, although etiological classification was based on an evaluation of angiography during EVT and was confirmed by further analysis with repeat angiography during admission, this assessment might still be incomplete. In patients with ICAS-related occlusion, the frequency of atrial fibrillation was 24%. However, the baseline characteristics and risk factors in the ICAS group were significantly different from those in the Embolic group, and the analytic results were not significantly changed when atrial fibrillation was excluded from the ICAS group (shown in the Supplementary Tables 1-3); thus, our main outcome, i.e., prognosis, is believed to be accurately reflected in our results.

In conclusion, our study showed that following EVT, patients with acute ischemic stroke due to ICAS-related occlusion had a relatively poorer prognosis than patients with acute stroke due to embolic occlusion.

## Supplementary materials

Supplementary materials related to this article can be found online at <https://doi.org/10.5853/jos.2018.01627>.

## Disclosure

The authors have no financial conflicts of interest.

## Acknowledgments

This work was partly supported by the National Research Foundation of Korea (NRF) Grant funded by the Korea Government (MSIP) (No. 2014R1A5A2010008: Sung-II Sohn; NRF-2018R1A2B6007094: Jin Soo Lee).

## References

1. Berkhemer OA, Fransen PS, Beumer D, van den Berg LA, Lingsma HF, Yoo AJ, et al. A randomized trial of intraarterial treatment for acute ischemic stroke. *N Engl J Med* 2015;372:11-20.
2. Goyal M, Demchuk AM, Menon BK, Eesa M, Rempel JL, Thornton J, et al. Randomized assessment of rapid endovascular treatment of ischemic stroke. *N Engl J Med* 2015;372:1019-1030.
3. Saver JL, Goyal M, Bonafe A, Diener HC, Levy EI, Pereira VM, et al. Stent-retriever thrombectomy after intravenous t-PA vs. t-PA alone in stroke. *N Engl J Med* 2015;372:2285-2295.
4. Jovin TG, Chamorro A, Cobo E, de Miquel MA, Molina CA,



- Rovira A, et al. Thrombectomy within 8 hours after symptom onset in ischemic stroke. *N Engl J Med* 2015;372:2296-2306.
5. Campbell BC, Mitchell PJ, Kleinig TJ, Dewey HM, Churilov L, Yassi N, et al. Endovascular therapy for ischemic stroke with perfusion-imaging selection. *N Engl J Med* 2015;372:1009-1018.
  6. Nogueira RG, Jadhav AP, Haussen DC, Bonafe A, Budzik RF, Bhuva P, et al. Thrombectomy 6 to 24 hours after stroke with a mismatch between deficit and infarct. *N Engl J Med* 2018; 378:11-21.
  7. Albers GW, Marks MP, Kemp S, Christensen S, Tsai JP, Ortega-Gutierrez S, et al. Thrombectomy for stroke at 6 to 16 hours with selection by perfusion imaging. *N Engl J Med* 2018; 378:708-718.
  8. Powers WJ, Derdeyn CP, Biller J, Coffey CS, Hoh BL, Jauch EC, et al. 2015 American Heart Association/American Stroke Association focused update of the 2013 guidelines for the early management of patients with acute ischemic stroke regarding endovascular treatment: a guideline for healthcare professionals from the American Heart Association/American Stroke Association. *Stroke* 2015;46:3020-3035.
  9. Casaubon LK, Boulanger JM, Blacquièrre D, Boucher S, Brown K, Goddard T, et al. Canadian stroke best practice recommendations: hyperacute stroke care guidelines, update 2015. *Int J Stroke* 2015;10:924-940.
  10. Hong KS, Ko SB, Yu KH, Jung C, Park SQ, Kim BM, et al. Update of the Korean clinical practice guidelines for endovascular recanalization therapy in patients with acute ischemic stroke. *J Stroke* 2016;18:102-113.
  11. Powers WJ, Rabinstein AA, Ackerson T, Adeoye OM, Bambakidis NC, Becker K, et al. 2018 Guidelines for the early management of patients with acute ischemic stroke: a guideline for healthcare professionals from the American Heart Association/American Stroke Association. *Stroke* 2018;49:e46-e110.
  12. Kim YW, Hong JM, Park DG, Choi JW, Kang DH, Kim YS, et al. Effect of intracranial atherosclerotic disease on endovascular treatment for patients with acute vertebrobasilar occlusion. *AJNR Am J Neuroradiol* 2016;37:2072-2078.
  13. Lee JS, Hong JM, Lee KS, Suh HI, Demchuk AM, Hwang YH, et al. Endovascular therapy of cerebral arterial occlusions: intracranial atherosclerosis versus embolism. *J Stroke Cerebrovasc Dis* 2015;24:2074-2080.
  14. Hwang YH, Kim YW, Kang DH, Kim YS, Liebeskind DS. Impact of target arterial residual stenosis on outcome after endovascular revascularization. *Stroke* 2016;47:1850-1857.
  15. Lee JS, Lee SJ, Hong JM, Choi JW, Hong JH, Chang HW, et al. Temporal changes in care processes and outcomes for endovascular treatment of acute ischemic stroke: retrospective registry data from three Korean centers. *Neurointervention* 2018;13:2-12.
  16. Lee JS, Hong JM, Kim JS. Diagnostic and therapeutic strategies for acute intracranial atherosclerosis-related occlusions. *J Stroke* 2017;19:143-151.
  17. Tomsick T, Broderick J, Carrozella J, Khatri P, Hill M, Palesch Y, et al. Revascularization results in the Interventional Management of Stroke II trial. *AJNR Am J Neuroradiol* 2008;29:582-587.
  18. Fiorelli M, Bastianello S, von Kummer R, del Zoppo GJ, Larrue V, Lesaffre E, et al. Hemorrhagic transformation within 36 hours of a cerebral infarct: relationships with early clinical deterioration and 3-month outcome in the European Cooperative Acute Stroke Study I (ECASS I) cohort. *Stroke* 1999;30: 2280-2284.
  19. Frontera JA, Claassen J, Schmidt JM, Wartenberg KE, Temes R, Connolly ES Jr, et al. Prediction of symptomatic vasospasm after subarachnoid hemorrhage: the modified fisher scale. *Neurosurgery* 2006;59:21-27.
  20. Kang DH, Hwang YH, Kim YS, Park J, Kwon O, Jung C. Direct thrombus retrieval using the reperfusion catheter of the penumbra system: forced-suction thrombectomy in acute ischemic stroke. *AJNR Am J Neuroradiol* 2011;32:283-287.
  21. Turk AS, Frei D, Fiorella D, Mocco J, Baxter B, Siddiqui A, et al. ADAPT FAST study: a direct aspiration first pass technique for acute stroke thrombectomy. *J Neurointerv Surg* 2014;6: 260-264.
  22. Roth C, Papanagiotou P, Behnke S, Walter S, Haass A, Becker C, et al. Stent-assisted mechanical recanalization for treatment of acute intracerebral artery occlusions. *Stroke* 2010; 41:2559-2567.
  23. Saver JL, Jahan R, Levy EI, Jovin TG, Baxter B, Nogueira RG, et al. Solitaire flow restoration device versus the Merci Retriever in patients with acute ischaemic stroke (SWIFT): a randomised, parallel-group, non-inferiority trial. *Lancet* 2012; 380:1241-1249.
  24. Nogueira RG, Lutsep HL, Gupta R, Jovin TG, Albers GW, Walker GA, et al. Trevo versus Merci retrievers for thrombectomy revascularisation of large vessel occlusions in acute ischaemic stroke (TREVO 2): a randomised trial. *Lancet* 2012;380:1231-1240.
  25. Saver JL, Goyal M, van der Lugt A, Menon BK, Majoie CB, Dippel DW, et al. Time to treatment with endovascular thrombectomy and outcomes from ischemic stroke: a meta-analysis. *JAMA* 2016;316:1279-1288.
  26. Kim GE, Yoon W, Kim SK, Kim BC, Heo TW, Baek BH, et al. Incidence and clinical significance of acute reocclusion after emergent angioplasty or stenting for underlying intracranial stenosis in patients with acute stroke. *AJNR Am J Neuroradi-*

- ol 2016;37:1690-1695.
27. Baek JH, Kim BM, Kim DJ, Heo JH, Nam HS, Song D, et al. Importance of truncal-type occlusion in stentriever-based thrombectomy for acute stroke. *Neurology* 2016;87:1542-1550.
  28. Chang Y, Kim BM, Bang OY, Baek JH, Heo JH, Nam HS, et al. Rescue stenting for failed mechanical thrombectomy in acute ischemic stroke: a multicenter experience. *Stroke* 2018;49:958-964.
  29. Lee JS, Hong JM, Lee KS, Suh HI, Choi JW, Kim SY. Primary stent retrieval for acute intracranial large artery occlusion due to atherosclerotic disease. *J Stroke* 2016;18:96-101.
  30. Kang DH, Kim YW, Hwang YH, Park SP, Kim YS, Baik SK. Instant reocclusion following mechanical thrombectomy of in situ thromboocclusion and the role of low-dose intra-arterial tirofiban. *Cerebrovasc Dis* 2014;37:350-355.
  31. Yoon W, Kim SK, Park MS, Kim BC, Kang HK. Endovascular treatment and the outcomes of atherosclerotic intracranial stenosis in patients with hyperacute stroke. *Neurosurgery* 2015;76:680-686.
  32. Goyal M, Menon BK, van Zwam WH, Dippel DW, Mitchell PJ, Demchuk AM, et al. Endovascular thrombectomy after large-vessel ischaemic stroke: a meta-analysis of individual patient data from five randomised trials. *Lancet* 2016;387:1723-1731.
  33. Albers GW. Late window paradox. *Stroke* 2018;49:768-771.
  34. Lee SU, Hong JM, Kim SY, Bang OY, Demchuk AM, Lee JS. Differentiating carotid terminus occlusions into two distinct populations based on Willisian collateral status. *J Stroke* 2016;18:179-186.
  35. Hwang YH, Kang DH, Kim YW, Kim YS, Park SP, Liebeskind DS. Impact of time-to-reperfusion on outcome in patients with poor collaterals. *AJNR Am J Neuroradiol* 2015;36:495-500.
  36. Liebeskind DS. Imaging the future of stroke: I. Ischemia. *Ann Neurol* 2009;66:574-590.
  37. Liebeskind DS, Cotsonis GA, Saver JL, Lynn MJ, Turan TN, Cloft HJ, et al. Collaterals dramatically alter stroke risk in intracranial atherosclerosis. *Ann Neurol* 2011;69:963-974.
  38. Suh HI, Hong JM, Lee KS, Han M, Choi JW, Kim JS, et al. Imaging predictors for atherosclerosis-related intracranial large artery occlusions in acute anterior circulation stroke. *J Stroke* 2016;18:352-354.

## Supplementary Document

### Analyses of patients with intracranial atherosclerotic stenosis but without atrial fibrillation

#### Classification process and final grouping

Among the 720 patients enrolled in the registry, 496 were included in the current analyses. We performed a blinded evaluation of the underlying etiology, using endovascular treatment angiography combined with evaluation of repeat angiography during admission following endovascular treatment (EVT) (608 of 720 patients). After patients with atrial fibrillation were excluded from the intracranial atherosclerotic stenosis (ICAS) group, the Embolic and ICAS-related groups comprised included 421 and 75 patients, respectively.

#### Description of supplementary tables

Supplementary Table 1 describes the baseline clinical and laboratory data according to etiological classification. Supplementary Table 2 shows the comparison of treatments and outcomes. Supplementary Table 3 shows the effects of underlying etiology on good outcomes using a logistic regression model. These results from patients with ICAS-related occlusion but without atrial fibrillation are similar to the results obtained from patients with ICAS occlusion with or without atrial fibrillation in the main manuscript.

**Supplementary Table 1.** Comparison of baseline characteristics and risk factors among groups

Characteristic	Embolic group (n=421)	ICAS group (n=75)	P
Age (yr)	68.2±12.4	63.16±13.14	0.002
Male sex	208 (49.8)	50 (66.7)	0.006
Premorbid mRS score	0 (0–0)	0 (0–0)	0.586
Initial NIHSS score	17 (13–21)	15 (11–19)	0.027
ASPECTS on noncontrast CT	7 (4–9)	8 (5–9)	0.248
Location of occlusive lesions on baseline angiography			<0.001
ICA T	170 (40.4)	13 (17.3)	
MCA M1	205 (48.7)	61 (81.3)	
MCA M2	46 (10.9)	1 (1.3)	
Hypertension	257 (61.0)	44 (58.7)	0.698
Diabetes mellitus	96 (22.8)	22 (29.3)	0.221
Coronary artery occlusive disease	53 (12.6)	5 (6.7)	0.141
Current smoking	84 (20.0)	26 (34.7)	0.005
Atrial fibrillation	267 (63.4)	0 (0)	<0.001
Prior antiplatelet	131 (31.1)	8 (10.7)	<0.001
Prior anticoagulant	71 (16.9)	1 (1.3)	<0.001
Laboratory data			
Blood glucose on admission (mg/dL)	137.6±52.0	143.4±54.1	0.376
HbA1c (%)	6.15±1.12	6.21±1.14	0.702
Total cholesterol (mg/dL)	163.0±52.2	188.0±43.4	<0.001
Triglyceride (mg/dL)	101.3±55.0	138.7±149.1	0.035
HDL-C (mg/dL)	47.2±21.6	44.2±10.7	0.252
LDL-C (mg/dL)	96.6±34.4	119.9±40.4	<0.001
ESR (mm/hr)	14.1±14.5	13.7±13.5	0.845
CRP (mg/dL)	0.68±1.70	1.30±4.41	0.229

Values are presented as mean±standard deviation, number (%), or median (interquartile range).

ICAS, intracranial atherosclerotic stenosis; mRS, modified Rankin Scale; NIHSS, National Institutes of Health Stroke Scale; ASPECTS, Alberta Stroke Program Early CT Scores; CT, computed tomography; ICA, internal carotid artery; MCA, middle cerebral artery; HbA1c, glycosylated hemoglobin; HDL-C, high density lipoprotein cholesterol; LDL-C, low density lipoprotein cholesterol; ESR, erythrocyte sedimentation rate; CRP, C-reactive protein.

**Supplementary Table 2.** Comparison of treatment and outcomes among groups

Variable	Embolic group	ICAS group	P
Onset-to-puncture time (min)	235 (165–374)	320 (245–560)	<0.001
Procedure time (min)	55 (40–83)	68 (49–97)	0.002
Intravenous tPA	235 (55.8)	34 (45.3)	0.093
Balloon guide catheter usage	311 (73.9)	49 (65.3)	0.127
Stent retriever usage	248 (58.9)	61 (81.3)	<0.001
Direct aspiration usage	281 (66.7)	43 (57.3)	0.115
Intracranial stenting	9 (2.1)	9 (12.0)	<0.001
Intracranial ballooning without stenting	2 (0.5)	7 (9.3)	<0.001
Number of techniques	1 (1–2)	2 (2–3)	<0.001
Final reperfusion grade (mTICI)			0.027
Grade 0	7 (1.7)	6 (8.0)	
Grade 1	8 (1.9)	2 (2.7)	
Grade 2a	71 (16.9)	10 (13.3)	
Grade 2b	209 (49.6)	33 (44.0)	
Grade 3	126 (29.9)	24 (32.0)	
Successful reperfusion (mTICI 2b–3)	335 (79.6)	57 (76.0)	0.484
Final recanalization grade (AOL)			<0.001
Grade 0	6 (1.4)	6 (8.0)	
Grade 1	9 (2.1)	16 (21.3)	
Grade 2	31 (7.4)	45 (60.0)	
Grade 3	375 (89.1)	8 (10.7)	
Intracerebral hemorrhage			0.504
No hemorrhage	272 (64.6)	56 (74.7)	
HT type 1	33 (7.8)	4 (5.3)	
HT type 2	48 (11.4)	7 (9.3)	
PH type 1	34 (8.1)	3 (4.0)	
PH type 2	34 (8.1)	5 (6.7)	
Serious hemorrhagic complications	45 (10.7)	6 (8.0)	0.480
Reocclusion on repeat angiographies	9 (2.5)	12 (17.9)	<0.001
3-Month mRS score	2 (1–4)	3 (1–4)	0.729
Good outcomes at 3 months	229 (54.5)	34 (45.3)	0.142

Values are presented as median (interquartile range) or number (%).

ICAS, intracranial atherosclerotic stenosis; tPA, tissue plasminogen activator; mTICI, modified treatment in cerebral ischemia; AOL, arterial occlusive lesion; HT, hemorrhagic transformation; PH, parenchymal hematoma; mRS, modified Rankin Scale.

**Supplementary Table 3.** Results of logistic regression model for evaluating the association between occlusion etiologies and good outcomes

Variable	Odds ratio (95% CI)	P
Age (yr)	0.945 (0.925–0.966)	<0.001
Male sex	0.957 (0.585–1.565)	0.861
Premorbid mRS score	0.537 (0.377–0.767)	0.001
Initial NIHSS score	0.897 (0.853–0.944)	<0.001
Baseline intracranial occlusion		0.561
ICA T	Reference	
MCA M1	1.224 (0.723–2.072)	0.452
MCA M2	1.544 (0.656–3.636)	0.320
ASPECTS	1.318 (1.202–1.445)	<0.001
Intravenous tPA use	1.095 (0.634–1.889)	0.745
Onset-to-puncture time (min)	0.999 (0.998–1.000)	0.062
Procedure time (min)	0.980 (0.973–0.987)	<0.001
Successful reperfusion	2.451 (1.344–4.470)	0.003
PH2 or SAH 3–4	0.214 (0.080–0.573)	0.002
Underlying etiology (ICAS vs. embolic occlusion)	0.432 (0.218–0.858)	0.016

CI, confidence interval; mRS, modified Rankin Scale; NIHSS, National Institutes of Health Stroke Scale; ICA, internal carotid artery; MCA, middle cerebral artery; ASPECTS, Alberta Stroke Program Early CT Scores; tPA, tissue plasminogen activator; PH, parenchymal hematoma; SAH, subarachnoid hemorrhage; ICAS, intracranial atherosclerotic stenosis.