

Croat Med J. 2015;56:104-13  
doi: 10.3325/cmj.2015.56.104

## Sex-specific chronic stress response at the level of adrenal gland modified sexual hormone and leptin receptors

**Aim** To compare cardiometabolic risk-related biochemical markers and sexual hormone and leptin receptors in the adrenal gland of rat males, non-ovariectomized females (NON-OVX), and ovariectomized females (OVX) under chronic stress.

**Methods** Forty six 16-week-old Sprague-Dawley rats were divided into male, NON-OVX, and OVX group and exposed to chronic stress or kept as controls. Weight, glucose tolerance test (GTT), serum concentration of glucose, and cholesterol were measured. Adrenal glands were collected at the age of 28 weeks and immunohistochemical staining against estrogen beta (ER $\beta$ ), progesterone (PR), testosterone (AR), and leptin (Ob-R) receptors was performed.

**Results** Body weight, GTT, serum cholesterol, and glucose changed in response to stress as expected and validated the applied stress protocol. Stressed males had significantly higher number of ER $\beta$  receptors in comparison to control group ( $P=0.028$ ). Stressed NON-OVX group had significantly decreased AR in comparison to control group ( $P=0.007$ ). The levels of PR did not change in any consistent pattern. The levels of Ob-R increased upon stress in all groups, but the significant difference was reached only in the case of stressed OVX group compared to control ( $P=0.033$ ).

**Conclusion** Chronic stress response was sex specific. OVX females had similar biochemical parameters as males. Changes upon chronic stress in adrenal gland were related to an increase in testosterone receptor in females and decrease in estrogen receptor in males.

Marta Balog<sup>1\*</sup>, Milan Miljanović<sup>1\*</sup>, Senka Blažetić<sup>2</sup>, Irena Labak<sup>2</sup>, Vedrana Ivić<sup>1</sup>, Barbara Viljetić<sup>1</sup>, Attila Borbely<sup>3</sup>, Zoltán Papp<sup>3</sup>, Robert Blažeković<sup>4</sup>, Sandor G. Vari<sup>5</sup>, Miklós Fagyas<sup>3</sup>, Marija Heffer<sup>1</sup>

<sup>1</sup>J. J. Strossmayer University of Osijek, Faculty of Medicine, Osijek, Croatia

<sup>2</sup>J. J. Strossmayer University of Osijek, Department of Biology, Osijek, Croatia

<sup>3</sup>University of Debrecen, Faculty of Medicine, Institute of Cardiology, Debrecen, Hungary

<sup>4</sup>Department of Cardiac and Transplantation Surgery, University Hospital Dubrava, Zagreb, Croatia

<sup>5</sup>International Research and Innovation Management Program, Cedars-Sinai Medical Center, Los Angeles, CA, USA

\*Equally contributing authors.

Received: February 22, 2015

Accepted: April 5, 2015

### Correspondence to:

Marija Heffer  
J. J. Strossmayer University of Osijek, Faculty of Medicine Osijek, Department of Medical Biology and Genetics  
Josipa Huttlera 4  
31000 Osijek, Croatia  
[mheffer@mefos.hr](mailto:mheffer@mefos.hr)

Maintaining homeostasis is often challenged by different types of stressors (1). Homeostasis is regulated by a complex endocrine processes engaging the hypothalamic-pituitary-adrenal axis (HPA) and sympathetic autonomic system (2-4). Stress can occur either in acute or chronic form with different consequences – the acute stress mostly induces the “fight or flight” response, while chronic stress promotes long term changes, which can lead to a variety of diseases (5,6). If stress is of sufficient magnitude and duration, the action of HPA is unsuppressed and results in prolonged elevation of cortisol (7), induced production of energy, vasoconstriction, lipolysis, proteolysis, immunosuppression, and suppression of reproductive function to save energy and retain overall homeostasis (8). Women are generally less susceptible to chronic stress up to the period of menopause, when the loss of protective hormones, estrogen and progesterone, occurs and thus they become prone to development of depression, anxiety, or schizophrenia (9). In contrast, men are generally more susceptible and sensitive to chronic stress, showing changes in feeding habits and decreased body weight (10,11).

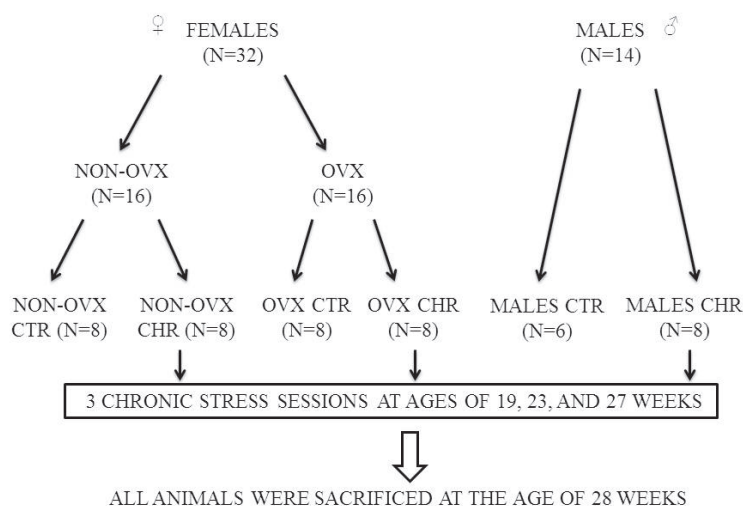
Chronic stress can cause the development of cardiovascular disorder, obesity, and diabetes, which can be reflected in serum cholesterol, glucose, and decreased glucose tolerance (12-14). There is a strong correlation between stress and sexual hormones, but the mechanisms by which estrogen, testosterone, and progesterone exert their possible protective role under stress conditions are not fully ex-

plored. Sexual hormones affect stress outcome and stress hormones affect the levels of sexual hormones (15-17). Testosterone is activated during stress response in rats and humans (18,19) and tends to increase more in men than women (20). Estrogen lowers the stress-induced response in women and men (9,21). Estrogens and progesterone are produced even after ovariectomy by adrenal glands (22) but it is not known if such compensation can withstand additional challenge like stress. Another possible player in stress response is leptin (Ob), hormone responsible for maintaining body weight, which is synthesized and secreted by adipose tissue (23), exerting its effects through the leptin receptor (Ob-R) (24). Chronic stress models imply a direct link between stress response and leptin (25,26). Receptors for leptin are present in the adrenal gland (27). The aim of this study was to investigate cardiovascular risk parameters and changes in leptin and sexual hormone receptors in adrenal gland during chronic stress. There is a clinically relevant change in the onset of cardiometabolic risk between healthy women and women with premature ovarian failure (28) and because of that ovariectomized female rats were included in the study.

## MATERIALS AND METHODS

### Animals

The study was conducted during 2013 and 2014 at the Faculty of Medicine Osijek and was approved by the cor-



**FIGURE 1.** Flowchart presenting the animal groups and the stress protocol timeline. CTRL = control, OVX = ovariectomized, NON-OVX = non ovariectomized.

responding ethics committees. Forty six 16-week-old Sprague-Dawley rats (22 males and 24 females) were divided in three groups: males, non-ovariectomized (NON-OVX) females, and ovariectomized (OVX) females. Each animal group was further divided into chronic stress and control group (Figure 1). Every group consisted of 8 animals, except the male control group, which consisted of 6 animals. Animals were housed in standard cages at room temperature. Standard laboratory rat food and tap water were available *ad libitum*, except during glucose tolerance test (GTT). The body weight was measured at the beginning of the study (at the age of 19 weeks), and after each chronic stress session (at the age of 20, 24, and 28 weeks).

### Ovariectomy

Female rats (n=16, OVX group) were ovariectomized at the age of 12 weeks according to Harlan Laboratories protocol (29). Before this study, we performed two pilot studies showing that if ovariectomy was performed 4 weeks before animals were included in the stress protocol (before moving them to experimental room), stress caused by surgical procedure was irrelevant and fully compensated (data not shown). This allowed us not to use sham operated group and reduce the total number of animals used.

In pilot studies, OVX and NON-OVX animals did not differ in behavioral response to handling before any stress was induced, moreover OVX animals were not more agitated. During ovariectomy the animals were anesthetized with isoflurane (Forane® isofluranum, Abbott Laboratories Ltd, Queenborough, UK). Postoperatively animals were provided with food and tap water *ad libitum* and were closely monitored for 72 hours.

### Chronic stress protocol

At 16 weeks age, all animals were moved from animal facility to animal experimental laboratory. Twenty four of them (8 males, 8 OVX, and 8 NON-OVX rats) were submitted to chronic stress at the age of 19 weeks (ie, 18 days later). Stress sessions (10-days of stress) were repeated three times. Stressors in the second and third stress session were uniformly performed in the same order and at the same time of the day. During stress session one, 3 GTT tests were performed (Figure 2) There was an 18-day period between the sessions and the protocol was finished when animals reached the age of 28 weeks. One of the stressors included exposure to cat's odor, which caused immediate and a very strong stress for rats causing their bristles to visibly protrude. The cat was examined by veterinarian and de-

STRESS SESSION 1	
Day	Stressor
1	Food deprivation overnight (14-18h in total)
2	GTT test (baseline measurement)
3	60 minutes of restraint in metal tubes at +4°C and food deprivation
4	GTT test (acute stress reference)
5	Overnight lights on
6	60 minutes of cage rotation
7	3 minutes of forced swimming
8	Overnight lights on with irregular noise
9	Exposure to cat's odor and food deprivation
10	GTT test (chronic stress reference)

STRESS SESSION 2 and STRESS SESSION 3	
Day	Stressor
1	Food deprivation overnight (14-18h in total)
2	60 minutes of restraint in metal tubes at +4°C
3	Overnight lights on
4	60 minutes of cage rotation
5	3 minutes of forced swimming
6	Overnight lights on with irregular noise
7	Exposure to cat's odor and food deprivation
8	60 minutes of restraint in metal tubes at +4°C
9	3 minutes of forced swimming
10	GTT test (prolonged chronic stress reference)

FIGURE 2. Detailed daily chronic stress protocol.

clared as healthy to participate in the protocol. The rats were sacrificed at the age of 28 weeks and tissues, organs, and blood were collected.

### Sham stress protocol

The control group (6 males, 8 OVX, and 8 NON-OVX rats) was submitted to sham stress. They were exposed to the same environment and handling as the chronic stress group but the stressors were omitted. Protocol (10-days sham stress session) was repeated 3 times until animals reached the age of 28 weeks, when they were sacrificed and tissues and organs were collected as well as blood, which was drawn from the heart for serum measurements.

### Glucose tolerance test

GTT was an additional stressor and it was performed in chronic stress group only. GTT was performed 5 times: a day before the first stress session (baseline reference), a day after the first stressor (acute stress reference – data not shown), and after the first, second, and third 10-day session (references of prolonged chronic stress). The animals fasted overnight for 14–18 hours before measurement and this was considered as additional stressor for all chronic stress groups. First, 2 g/kg of glucose per body weight was injected intraperitoneally. Glucose concentration was measured at six time points – 0, 15, 30, 45, 60, and 90 minutes by OneTouch® UltraMini® Glucose Meter (Milpitas, CA, USA). The strength of a physiological factor can be measured by calculating the area under the curve (AUC) (30), which we applied for glucose tolerance test. AUCs were calculated using trapezoidal integration.

### Biochemical analyses

For biochemical analysis of glucose and cholesterol, serum was collected at the time of sacrifice. All animals were sacrificed during the daytime, two days after the last GTT was performed. After the last GTT, animals had the food available *ad libitum*, however, since rats do not feed during daytime (sacrificing was performed at 12–6 h pm) we assume that these measurements were performed preprandial. Upon deep anesthesia, blood was collected with a syringe from the right ventricle and transferred to 6 mL EDTA tubes. Serum was separated by 5 minutes of centrifugation at 3000×g. Serum glucose concentration was measured using an enzymatic UV-assay (Cat. No: 05168791 190, Roche Diagnostics GmbH, Mannheim, Germany). The inter-assay coefficient of variation (CV) was <2% (lower detec-

tion limit: 0.85 mmol/L, upper detection limit: 45 mmol/L). Total cholesterol concentration was measured using a colorimetric assay (Cat. No: 05168538 190, Roche Diagnostics GmbH). The inter-assay CV was <2% (lower detection limit: 0.1 mmol/L, upper detection limit: 20.7 mmol/L). All measurements were performed on the Roche/Hitachi Cobas C 701 analyzer (Roche Diagnostics GmbH).

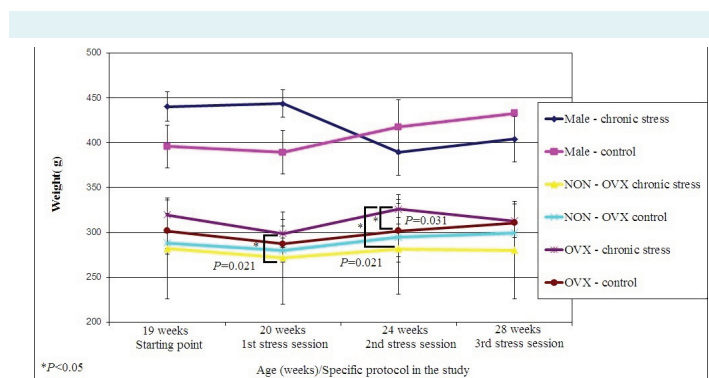
### Adrenal gland isolation

Animals were anesthetized using isoflurane (Forane® isofluranum, Abbott Laboratories Ltd) as inhalation gas in a glass chamber and intramuscular injection of Ketamine (Ketanest, Pfizer Corporation, New York City, NY, USA) at a concentration of 30 mg/kg. At the time of sacrifice both adrenal glands from each animal were isolated, fixed overnight in 4% paraformaldehyde in PBS, cryoprotected in 10%, 20%, and 30% sucrose (24 hours each) and snap frozen in pre-chilled isopentane. The samples were stored at -80°C for further analysis.

### Immunohistochemistry

For adrenal gland immunohistochemistry, 25- $\mu$ m cryosections were used. After 1% H<sub>2</sub>O<sub>2</sub> in PBS pretreatment for inactivation of endogenous peroxidase, sections were placed in blocking solution containing 1% bovine serum albumin and 5% goat serum in PBS for two hours at +4°C with gentle shaking. After blocking, the unspecific binding sections were incubated with primary antibodies up to 2 nights at +4°C. Primary antibodies were prepared in blocking solution and used in different dilutions: anti-ER $\beta$  (1:100), anti-PR (1:100), anti-AR (1:250), and anti-Ob-R (1:30) (Santa Cruz Biotechnology, Dallas, TX, USA). The sections were washed in PBS and incubated with secondary biotinylated goat anti-rabbit antibody (Jackson Immuno Research, West Grove, PA, USA) for 2 h at +4°C. After washing sections in PBS, secondary antibody was detected with Vectastain ABC kit (Vector Laboratories Inc., Burlingame, CA, USA) by incubation for 1 h. Sections were washed in PBS and visualized with peroxidase substrate kit (DAB) (Vector Laboratories Inc., Burlingame, CA, USA). Sections were mounted on slides, air-dried and scanned with Nikon Super CoolScan 9000 ED (Nikon Inc., Melville, NY, USA), coverslipped with Vectamount (Vector Laboratories Inc.) and imaged on Zeiss Axioskop 2 MOT microscope (Carl Zeiss Microscopy, Thornwood, NY, USA), with Olympus D70 camera (Olympus, Hamburg, Germany). Figures were assembled, adjusted for contrast, intensity and brightness in Photoshop (Adobe Systems Incorporated, San Jose, CA,

USA) to remove signal background that occurred in control reactions. ERβ, PR, AR, and Ob-R were quantified by



**FIGURE 3.** Body weights of male, ovariectomized (OVX), and non ovariectomized (NON-OVX) animal groups upon no stress (control) and chronic stress at the beginning of the study and after each stress session had started (weeks 19, 20, 24, and 28). Statistical significance level was set to  $P < 0.05$ .

counting the cells that gave positive signal using free ImageJ software (US National Institutes of Health, Bethesda, MD, USA) in a field  $200 \times 200 \mu\text{m}$  under  $400 \times$  magnifications for each layer of adrenal gland.

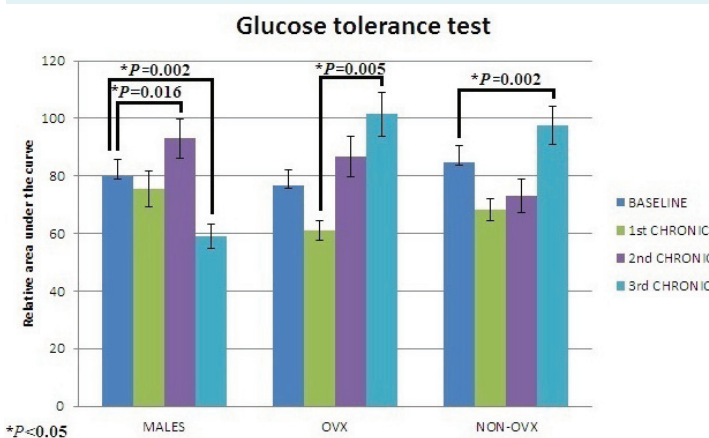
**Statistical analysis**

Distribution of data (weight, serum concentrations of glucose and cholesterol) was determined by Shapiro-Wilk test. For data with non-normal distribution, Kruskal-Wallis and Mann-Whitney were used. For data with normal distribution,  $t$  test for independent samples was used. Statistical significance level was defined as  $P < 0.05$ . Statistical tests were performed using the statistical software package SPSS (SPSS Inc. Released 2008. SPSS Statistics for Windows, Version 13.0, Chicago, IL, USA).

**RESULTS**

**The effect of chronic stress on body weight, biochemical parameters, and glucose tolerance test**

Statistical analysis regarding the body weight was performed in all groups (Figure 3). Male chronic stress group showed overall loss of weight and specifically after the second round of chronic stress. It had been shown that repeated stress has long term negative effect on body weight in male Sprague Dawley rats (31) and we expected similar finding. Weight in OVX chronic stress group was significantly higher than in OVX control group during the second stress session at week 24 ( $P = 0.031$ ), and in NON-OVX group after the first ( $P = 0.021$ ) and second ( $P = 0.021$ ) stress session (weeks 20 and 24). NON-OVX chronic stress group had almost the same weight at the beginning and at the end of the study. Animal weights corresponded to physiologically expected values (32). Observed differences in weight between males and females during chronic stress were previously reported (33), and they could be considered a proof for validity of the chronic stress protocol.



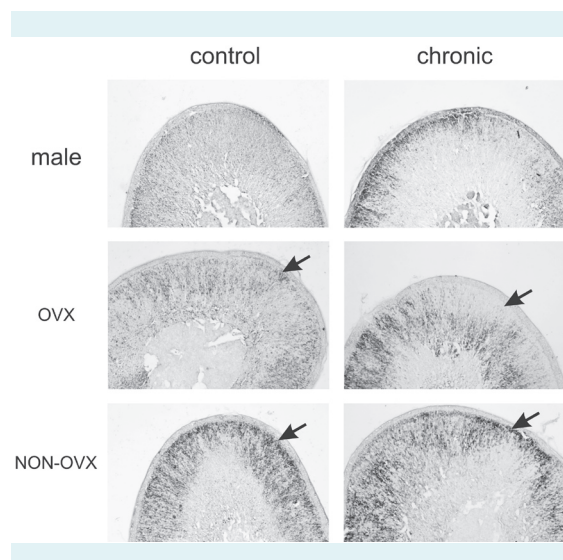
**FIGURE 4.** Quantification of glucose tolerance test relative areas under the curve (AUC) of male, ovariectomized (OVX), and non ovariectomized (NON-OVX) animal groups upon no stress (baseline) and three sessions of chronic stress. Statistical significance level was set to  $P < 0.05$ .

**TABLE 1.** Values of cholesterol and glucose serum concentrations measured at the end of the treatment in male, ovariectomized (OVX), and non ovariectomized (NON-OVX) animal groups upon no stress (control) and chronic stress. Statistical significance level was set to  $P < 0.05$ .

	Male		OVX		NON-OVX	
	Control	Chronic stress	Control	Chronic stress	Control	Chronic stress
Glucose (mmol/L), mean $\pm$ standard deviation	8.45 ( $\pm 1.38$ )	7.8 ( $\pm 1.33$ )	8.71 ( $\pm 2.84$ )	4.87 ( $\pm 2.38$ )	7.78 ( $\pm 0.71$ )	9.37 ( $\pm 1.17$ )
	$P = 0.001$					
Cholesterol (mmol/L), mean $\pm$ standard deviation	1.86 ( $\pm 0.21$ )	1.67 ( $\pm 0.18$ )	2.79 ( $\pm 0.39$ )	2.32 ( $\pm 0.34$ ) <sup>†</sup>	2.61 ( $\pm 0.29$ )	2.34 ( $\pm 0.92$ ) <sup>†</sup>
	$P = 0.011$				$P = 0.028$	

### Both glucose and cholesterol in serum were lower upon chronic stress in ovariectomized rats

Serum measurements of cholesterol and glucose (Table 1) were performed in control and chronic stress groups not challenged with glucose for 24 hours. In OVX chronic stress



**FIGURE 5.** Ob-R antibody immunostaining of the adrenal gland (25  $\mu\text{m}$  sections) *zona reticularis* in male (M), ovariectomized (OVX), and non-ovariectomized (NON-OVX) group upon no stress (control) and upon chronic stress. Arrows indicate the presence of strong nuclear staining. Pictures were taken under 400 magnification.

group glucose concentrations were significantly lower than in control group ( $P=0.001$ ). Chronic stress resulted in a significant decrease in cholesterol levels in both female groups ( $P=0.011$  for OVX and  $P=0.028$  for NON-OVX) compared to control groups.

### GTT results were affected upon chronic stress

The stress influenced the GTT results. Male and OVX group showed similar results at all the time points. Males showed significantly higher AUCs after the second stress session ( $P=0.016$ ) and significantly lower AUCs after the third stress session ( $P=0.002$ ) in comparison to baseline measurement. In NON-OVX group, the third chronic stress session significantly increased glucose levels compared to baseline measurement ( $P=0.002$ ). In OVX group, AUC value was significantly higher after the third stress session than after the first stress session ( $P=0.005$ ) (Figure 4).

### Sex-specific differences in expression of sexual hormone receptors and leptin receptor in adrenal gland upon chronic stress

Four zones of adrenal gland were taken into account: *zona glomerulosa*, *zona fasciculata*, *zona reticularis*, and *medulla*. Significant changes were observed in *zona glomerulosa* and *zona reticularis* so in further presentation we focused on these layers only (Table 2).

**TABLE 2.** Values of sexual hormone and leptin receptors immunopositive cells in the *zona glomerulosa* (for estrogen receptor beta and progesterone receptor) and *zona reticularis* (for testosterone and leptin receptors) in ovariectomized (OVX), non ovariectomized (NON-OVX), and male control and chronic stress groups. Statistical significance level was set to  $P < 0.05$ .

	Male Mean ( $\pm$ SD) (stained cell count/0.04mm <sup>2</sup> )	OVX Mean ( $\pm$ SD) (stained cell count/0.04mm <sup>2</sup> )	NON-OVX Mean ( $\pm$ SD) (stained cell count/ 0.04mm <sup>2</sup> )
<b>Estrogen receptor beta in zona glomerulosa</b>			
Control	2.3 ( $\pm$ 2.08)*	3.7 ( $\pm$ 1.53)	104.3 ( $\pm$ 41.66)
Chronic stress	23 ( $\pm$ 10.44)*	12.7 ( $\pm$ 5.50)	57.7 ( $\pm$ 21.96)
<b>Progesterone receptor in zona glomerulosa</b>			
Control	10 ( $\pm$ .30)	15.3 ( $\pm$ 6.80)	21 ( $\pm$ 5.2)
Chronic stress	4 ( $\pm$ 2)	4 ( $\pm$ 1)	11.3 ( $\pm$ 5.5)
<b>Testosterone receptor in zona reticularis</b>			
Control	28.3 ( $\pm$ 8.5)	79.6 ( $\pm$ 5.50)	84 ( $\pm$ 12.28) <sup>†</sup>
Chronic stress	35.6 ( $\pm$ 7.23)	204.3 ( $\pm$ 74.89)	32.3 ( $\pm$ 12.42) <sup>†</sup>
<b>Leptin receptor in zona reticularis</b>			
Control	6 ( $\pm$ 3.46)	7.3 ( $\pm$ 2.30) <sup>‡</sup>	8 ( $\pm$ 2)
Chronic stress	14 ( $\pm$ 6.1)	14.6 ( $\pm$ 3.21) <sup>‡</sup>	16.3 ( $\pm$ 6.80)

\* $P=0.028$ .

<sup>†</sup> $P=0.007$ .

<sup>‡</sup> $P=0.033$ .

Male and OVX group had the same low basal levels of ER $\beta$  receptors in *zona glomerulosa*. In male chronic stress group, the number of ER $\beta$  receptors significantly increased compared to male control group ( $P=0.028$ ). In male and OVX group, the values of AR in *zona reticularis* increased upon chronic stress. In NON-OVX chronic stress group AR positive cells significantly decreased ( $P=0.007$ ). The levels of PR in *zona glomerulosa* did not change in any consistent pattern. The levels of Ob-R in *zona reticularis* increased in all groups (Figure 5), but the significant difference was reached only in OVX chronic stress group compared to OVX control group ( $P=0.033$ ).

## DISCUSSION

This study showed changes in cardiovascular risk factors and a set of receptors in the adrenal gland using a model of chronic stress in rats (34). Human studies on obesity that separate sex-specific results usually report the same phenomenon; chronic stress is not a risk factor for developing obesity in men (35). On the contrary, it is a risk factor for developing obesity in women (36). In our study, male chronic stress group showed overall loss of weight, while NON-OVX chronic stress group showed no weight gain toward the end of the study. This result suggests a good feedback system of body weight maintenance. Concluding from OVX females, maintenance of body weight did not depend on the ovarian function itself, but possibly on overall compensatory production of different hormones, including sexual hormones produced by the adrenal gland.

Classical clinical markers of cardiometabolic risk (dyslipidemia, metabolism of glucose, and cholesterol) are good candidates to verify the influence of stress (13,14,37). In this study both serum glucose and cholesterol were lower upon chronic stress, in particular in OVX group. Data about cholesterol levels upon chronic stress in humans are ambiguous – some studies report decrease (38), but more studies report elevation (39). We could assume that the observed low measurements of glucose and cholesterol were a sign of stress compensation during peak of reproductive age (our animals were considered to match 20-30 old humans).

Peritoneal GTT is considered as valuable orientation sign of glucose metabolism changes in animal studies (40). Impaired glucose tolerance after surgical removal of ovaries in premenopausal women (due to treatment of cancer) is reported in almost half of the patients after 12 months period (41). In our study males and OVX animals

showed similar AUCs trend with the worst glucose tolerance after the second stress measurement and increased tolerance after the third. This could be explained by the young age of the animals and their assimilation to stress or the onset of hyperinsulinemia. The similarity of OVX and male groups could be explained by similar physiology due to the lack of sexual hormones excreted by the ovaries.

Estrogen, testosterone, and progesterone receptors are autoregulated and have been identified in the adrenal gland of many animals, including rodents (42-44). Moreover, overlap of estrogen, progesterone, and testosterone receptors expression is observed in the neurons of paraventricular nuclei (PVN) in humans and animals (45,46).

ER $\beta$  in adrenal gland were involved in maintenance of homeostasis in non-ovariectomized females. Stress induced up-regulation of testosterone receptor in adrenal glands in ovariectomized females and males may implicate change in testosterone regulation via the HPA axis. Since the production of testosterone in OVX females can only occur in the adrenal gland (47), this finding could mean that besides cortisol, testosterone was also involved in regulation of overall secretion by *zona reticularis* cells in OVX females. Progesterone receptor was not influenced by chronic stress, while Ob-R was strongly up-regulated in ovariectomized rats. Besides its effect on body weight regulation, leptin also suppresses the HPA through its negative effect on corticotropin-releasing hormone (CRH) in response to stress (48). Ob-R antibody staining was analyzed in the *zona reticularis*, which is responsible for steroid hormones production (49). The strong receptor expression was noticed in all animal groups after chronic stress. The leptin receptor signaling pathway seemed to be especially important for endocrine cells, which are producing reproductive hormones.

In conclusion, body weight, GTT changes, and specific pattern of biochemical parameters changed in response to stress and were a useful tool for validating chronic stress protocol. Some exceptions in measurements could be explained by the young age of the animals. In response to stress, early changes in sex specific pattern were detected in the adrenal gland. Changes upon chronic stress in the adrenal gland were related to an decrease in testosterone receptor in females and increase in estrogen receptor in males.

**Acknowledgment** The authors thank to the RECOOP Research Network for providing necessary collaboration

**Funding** Internal grant from J. J. Strossmayer University of Osijek.

**Ethical approval** was received from local ethics committee of Faculty of Medicine Osijek, J. J. Strossmayer University of Osijek and Croatian Ministry of Agriculture.

**Declaration of authorship** MH, MB, and SV participated in designing the study. RB performed all surgical interventions. VI, IL, MB, SB, BV, MM, ZP, AB, and MF performed data acquisition. MB, MM, IL, and MH took part in manuscript writing and editing. IL performed the statistical analysis. All authors gave the final approval for publication.

**Competing interests** The Editor-in-Chief is a PhD mentor of the first author MB, but he was not involved in this study at any stage. To ensure that any possible conflict of interest relevant to the journal has been addressed, this article was reviewed according to best practice guidelines of international editorial organizations. All authors have completed the Unified Competing Interest form at [www.icmje.org/coi\\_disclosure.pdf](http://www.icmje.org/coi_disclosure.pdf) (available on request from the corresponding author) and declare: no support from any organization for the submitted work; no financial relationships with any organizations that might have an interest in the submitted work in the previous 3 years; no other relationships or activities that could appear to have influenced the submitted work.

## References

- Chrousos GP, Gold PW. The concepts of stress and stress system disorders. Overview of physical and behavioral homeostasis. *JAMA*. 1992;267:1244-52. [Medline:1538563](#) [doi:10.1001/jama.1992.03480090092034](#)
- Harvey S, Phillips JG, Rees A, Hall TR. Stress and adrenal function. *J Exp Zool*. 1984;232:633-45. [Medline:6097634](#) [doi:10.1002/jez.1402320332](#)
- Papadimitriou A, Priftis KN. Regulation of the hypothalamic-pituitary-adrenal axis. *Neuroimmunomodulation*. 2009;16:265-71. [Medline:19571587](#) [doi:10.1159/000216184](#)
- Tsigos C, Chrousos GP. Hypothalamic-pituitary-adrenal axis, neuroendocrine factors and stress. *J Psychosom Res*. 2002;53:865-71. [Medline:12377295](#) [doi:10.1016/S0022-3999\(02\)00429-4](#)
- Wittstein IS, Thiemann DR, Lima JAC, Baughman KL, Schulman SP, Gerstenblith G, et al. Neurohumoral Features of Myocardial Stunning Due to Sudden Emotional Stress. *N Engl J Med*. 2005;352:539-48. [Medline:15703419](#) [doi:10.1056/NEJMoa043046](#)
- Goldstein DS. Stress, catecholamines, and cardiovascular disease. 1st ed. New York: Oxford University Press; 1995.
- Vanitallie TB. Stress: a risk factor for serious illness. *Metabolism*. 2002;51:40-5. [Medline:12040540](#) [doi:10.1053/meta.2002.33191](#)
- Munck A, Guyre PM, Holbrook NJ. Physiological functions of glucocorticoids in stress and their relation to pharmacological actions. *Endocr Rev*. 1984;5:25-44. [Medline:6368214](#) [doi:10.1210/edrv-5-1-25](#)
- Kudielka BM, Schmidt-Reinwald AK, Hellhammer DH, Kirschbaum C. Psychological and Endocrine Responses to Psychosocial Stress and Dexamethasone/ Corticotropin-Releasing Hormone in Healthy Postmenopausal Women and Young Controls: The Impact of Age and a Two-Week Estradiol Treatment. *Neuroendocrinology*. 1999;70:422-30. [Medline:10657735](#) [doi:10.1159/000054504](#)
- Marti O, Marti J, Armario A. Effects of Chronic Stress on Food Intake in Rats: Influence of Stressor Intensity and Duration of Daily Exposure. *Physiol Behav*. 1994;55:747-53. [Medline:8190805](#) [doi:10.1016/0031-9384\(94\)90055-8](#)
- Bruder-Nascimento T, Campos DHS, Alves C, Thomaz S, Cicogna AC, Cordellini S. Effects of chronic stress and high-fat diet on metabolic and nutritional parameters in Wistar rats. *Arq Bras Endocrinol Metabol*. 2013;57:642-9. [Medline:24343634](#) [doi:10.1590/S0004-27302013000800010](#)
- Stephoe A, Kivimäki M. Stress and cardiovascular disease: an update on current knowledge. *Annual Review of Public Health*. 2013;34:337-354. [Medline:23297662](#) [doi:10.1146/annurev-publhealth-031912-114452](#)
- Middelbeek RJ, Horton ES. The role of glucose as an independent cardiovascular risk factor. *Curr Diab Rep*. 2007;7:43-9. [Medline:17254517](#) [doi:10.1007/s11892-007-0008-4](#)
- Brunzell JD, Davidson M, Furberg CD, Goldberg RB, Howard BV, Stein JH, et al. Lipoprotein Management in Patients With Cardiometabolic Risk. *J Am Coll Cardiol*. 2008;51:1512-24. [Medline:18402913](#) [doi:10.1016/j.jacc.2008.02.034](#)
- Kuiper GG, Carlsson B, Grandien K, Enmark E, Häggblad J, Nilsson S, et al. Comparison of the ligand binding specificity and transcript tissue distribution of estrogen receptors alpha and beta. *Endocrinology*. 1997;138:863-70. [Medline:9048584](#)
- Heinlein CA, Chang C. The roles of androgen receptors and androgen-binding proteins in nongenomic androgen actions. *Mol Endocrinol*. 2002;16:2181-7. [Medline:12351684](#) [doi:10.1210/me.2002-0070](#)
- de Cremoux P, Rosenberg D, Goussard J, Brémont-Weil C, Tissier F, Tran-Perennou C, et al. Expression of progesterone and estradiol receptors in normal adrenal cortex, adrenocortical tumors, and primary pigmented nodular adrenocortical disease. *Endocr Relat Cancer*. 2008;15:465-74. [Medline:18508999](#) [doi:10.1677/ERC-07-0081](#)
- Retana-Márqueza S, Bonilla-Jaimea H, Vázquez-Palacios G, Martínez-García R, Velázquez-Moctezuma J. Changes in masculine sexual behavior, corticosterone and testosterone in response to acute and chronic stress in male rats. *Horm Behav*. 2003;44:327-37. [Medline:14613727](#) [doi:10.1016/j.yhbeh.2003.04.001](#)
- Hermans EJ, Putman P, Baasa JM, Gecksa NM, Kenemansa JL, Honka J. Exogenous testosterone attenuates the integrated central stress response in healthy young women. *Psychoneuroendocrinology*. 2007;32:1052-61. [Medline:17904297](#) [doi:10.1016/j.psyneuen.2007.08.006](#)
- Bergman B, Brismar B. Hormone levels and personality traits in abusive and suicidal male alcoholics. *Alcohol Clin Exp Res*. 1994;18:311-6. [Medline:8048732](#) [doi:10.1111/j.1530-0277.1994.tb00019.x](#)
- Kirschbaum C, Schommer N, Federenko I, Gaab J, Neumann O, Oellers M, et al. Short-term estradiol treatment enhances pituitary-adrenal axis and sympathetic responses to psychosocial stress in healthy young men. *J Clin Endocrinol Metab*. 1996;81:3639-43.



- Medline:8855815
- 22 Zhao H, Tian Z, Hao J, Chen B. Extragonadal aromatization increases with time after ovariectomy in rats. *Reprod Biol Endocrinol.* 2005;3:6. [Medline:15661083](#) [doi:10.1186/1477-7827-3-6](#)
  - 23 Campfield LA, Smith FJ, Burn P. The OB protein (leptin) pathway-a link between adipose tissue mass and central neural networks. *Horm Metab Res.* 1996;28:619-32. [Medline:9013731](#) [doi:10.1055/s-2007-979867](#)
  - 24 Friedman JM, Halaas JL. Leptin and the regulation of body weight in mammals. *Nature.* 1998;395:763-70. [Medline:9796811](#) [doi:10.1038/27376](#)
  - 25 Malendowicz LK, Rucinski M, Belloni AS, Ziolkowska A, Nussdorfer GG. Leptin and the regulation of the hypothalamic-pituitary-adrenal axis. *Int Rev Cytol.* 2007;263:63-102. [Medline:17725965](#) [doi:10.1016/S0074-7696\(07\)63002-2](#)
  - 26 The effect of chronic immobilization stress on leptin signaling in the ovariectomized (OVX) rat. *Endocrine.* 2012;42:717-25. [Medline:22706604](#) [doi:10.1007/s12020-012-9716-x](#)
  - 27 Glasow A, Haidan A, Hilbers U, Breidert M, Gillespie J, Scherbaum WA, et al. Expression of Ob Receptor in Normal Human Adrenals: Differential Regulation of Adrenocortical and Adrenomedullary Function by Leptin 1. *J Clin Endocrinol Metab.* 1998;83:4459-66. [Medline:9851794](#)
  - 28 Beck-Pecco P, Persani L. Premature ovarian failure. *Orphanet J Rare Dis.* 2006;1:9. [Medline:16722528](#) [doi:10.1186/1750-1172-1-9](#)
  - 29 Harlan Laboratories. Ovariectomy protocol. 2009;01:1-1.
  - 30 Tai MM. A mathematical model for the determination of total area under glucose tolerance and other metabolic curves. *Diabetes Care.* 1994;17:152-154. [Medline:8137688](#) [doi:10.2337/diacare.17.2.152](#)
  - 31 Harris RBS, Zhou J, Youngblood BD, Rybkin II, Smagin GN, Ryan DH. Effect of repeated stress on body weight and body composition of rats fed low- and high-fat diets. *Am J Physiol.* 1998;275:R1928-38. [Medline:9843882](#)
  - 32 Alemán CL1, Más RM, Rodeiro I, Noa M, Hernández C, Menéndez R, Gámez R. Reference database of the main physiological parameters in Sprague-Dawley rats from 6 to 32 months. *Lab Anim.* 1998;32:457-66. [Medline:9807760](#) [doi:10.1258/002367798780599802](#)
  - 33 Faraday MM. Rat sex and strain differences in responses to stress. *Physiol Behav.* 2002;75:507-22. [Medline:12062315](#) [doi:10.1016/S0031-9384\(02\)00645-5](#)
  - 34 Balog M, Mlinarević D, Šerić V, Miljanović M, Blažeković R, Degmečić IV, et al. Plasma content of glucose, C-reactive protein, uric acid and Cholesterol in male, female and ovariectomized rats upon acute and Chronic stress – a path for development of cardiovascular diseases. *Coll Antropol.* In press.
  - 35 Fowler-Brown AG, Bennett GG, Goodman MS, Wee CC, Corbie-Smith GM, James SA. Psychosocial Stress and 13-year BMI Change Among Blacks: The Pitt County Study. *Obesity (Silver Spring).* 2009;17:2106-9. [Medline:19407807](#) [doi:10.1038/oby.2009.130](#)
  - 36 Kubzansky LD, Bordoelois P, Jun HJ, Roberts AL, Cerda M, Bluestone N, et al. The weight of traumatic stress a prospective study of posttraumatic stress disorders symptoms and weight status in women. *JAMA Psychiatry.* 2014;71:44-51. [Medline:24258147](#) [doi:10.1001/jamapsychiatry.2013.2798](#)
  - 37 Jiamsripong P, Mookadam M, Honda T, Khandheria BK, Mookadam F. Metabolic Syndrome and cardiovascular disease: part I. *Prev Cardiol.* 2008;11:155-61. [Medline:18607151](#) [doi:10.1111/j.1751-7141.2008.07809.x](#)
  - 38 Von Kanel R, Abbas CC, Kraemer B, Begre S. Posttraumatic stress disorder and dyslipidemia: Previous research and novel findings from patients with PTSD caused by myocardial infarction. *World J Biol Psychiatry.* 2010;11:141-7. [Medline:20109110](#) [doi:10.3109/15622970903449846](#)
  - 39 Bezzeria Maia et al. Brief report Abnormal serum lipid profile in Brazilian police officers with post-traumatic stress disorder Deborah. *J Affect Disord.* 2008;107:259-63. [Medline:17888517](#) [doi:10.1016/j.jad.2007.08.013](#)
  - 40 Ayala JE, Varman TS, Schuman GI. Standard operating procedures for describing and performing metabolic tests of glucose homeostasis in mice. *Dis Model Mech.* 2010;3:525-34. [Medline:20713647](#) [doi:10.1242/dmm.006239](#)
  - 41 Pirimoglu ZM, Arslan C, Buyukbayrak EE, Kars B, Karsidag YK, Unal O, et al. Glucose tolerance of premenopausal women after menopause due to surgical removal of ovaries. *Climacteric.* 2011;14:453-7. [Medline:21271939](#) [doi:10.3109/13697137.2010.539723](#)
  - 42 Calandra RS, Purvis K, Naess O, Attramadal A, Djrseland O, Hansson V. Androgen receptors in the rat adrenal gland. *J Steroid Biochem.* 1978;9:1009-15. [Medline:745391](#) [doi:10.1016/0022-4731\(78\)90066-3](#)
  - 43 Jayachandran M, Miller VM. Ovariectomy upregulates expression of estrogen receptors, NOS, and HSPs in porcine platelets. *Am J Physiol Heart Circ Physiol.* 2002;283:H220-6. [Medline:12063294](#) [doi:10.1152/ajpheart.00950.2001](#)
  - 44 Cremoux P, Rosenberg D, Goussard J, Brémont-Weil C, Tissier F, Tran-Perennou C, et al. Expression of progesterone and estradiol receptors in normal adrenal cortex, adrenocortical tumors, and primary pigmented nodular adrenocortical disease. *Endocr Relat Cancer.* 2008;15:465-74. [Medline:18508999](#) [doi:10.1677/ERC-07-0081](#)
  - 45 Gréco B, Edwards DA, Michael RP, Clancy AN. Androgen receptors and estrogen receptors are colocalized in male rat hypothalamic and limbic neurons that express Fos immunoreactivity induced by mating. *Neuroendocrinology.* 1998;67:18-28. [Medline:9485165](#) [doi:10.1159/000054294](#)
  - 46 Romeo RD, Bellani R, McEwen BS. Stress-induced progesterone secretion and progesterone receptor immunoreactivity in the

- paraventricular nucleus are modulated by pubertal development in male rats. *Stress*. 2005;8:265-71. [Medline:16423715](#)  
[doi:10.1080/10253890500489320](#)
- 47 Bulun SE. The physiology and pathology of the female reproductive axis. In: Melmed S, Polonsky KS, Larsen PR, Kronenberg HM, eds. *Williams Textbook of Endocrinology*. 12th ed. Philadelphia, Pa: Saunders Elsevier; 2011.
- 48 Heiman ML, Ahima RS, Craft LS, Schoner B, Stephens TW, Flier JS. Leptin Inhibition of the Hypothalamic-Pituitary-Adrenal Axis in Response to Stress. *Endocrinology*. 1997;138:3859-63. [Medline:9275075](#)
- 49 Glasow A, Bornstein SR. Leptin and the adrenal gland. *Eur J Clin Invest*. 2000;30 Suppl 3:39-45. [Medline:11281366](#) [doi:10.1046/j.1365-2362.2000.0300s3039.x](#)