




Detection of VIM-1-Producing *Enterobacter cloacae* and *Salmonella enterica* Serovars Infantis and Goldcoast at a Breeding Pig Farm in Germany in 2017 and Their Molecular Relationship to Former VIM-1-Producing *S. Infantis* Isolates in German Livestock Production

Nicole Roschanski,^{a*} Sead Hadziabdic,^b Maria Borowiak,^b Burkhard Malorny,^b Bernd-Alois Tenhagen,^b  Michaela Projahn,^{a*} Annemarie Kaesbohrer,^{b,c} Sebastian Guenther,^{a*} Istvan Szabo,^b Uwe Roesler,^a Jennie Fischer^b

^aInstitute for Animal Hygiene and Environmental Health, Freie Universitaet Berlin, Berlin, Germany

^bDepartment of Biological Safety, German Federal Institute for Risk Assessment, BfR, Berlin, Germany

^cInstitute of Veterinary Public Health, University of Veterinary Medicine, Vienna, Austria

ABSTRACT In 2011, VIM-1-producing *Salmonella enterica* serovar Infantis and *Escherichia coli* were isolated for the first time in four German livestock farms. In 2015/2016, highly related isolates were identified in German pig production. This raised the issue of potential reservoirs for these isolates, the relation of their mobile genetic elements, and potential links between the different affected farms/facilities. In a piglet-producing farm suspicious for being linked to some *bla*_{VIM-1} findings in Germany, fecal and environmental samples were examined for the presence of carbapenemase-producing *Enterobacteriaceae* and *Salmonella* spp. Newly discovered isolates were subjected to Illumina whole-genome sequencing (WGS) and S1 pulsed-field gel electrophoresis (PFGE) hybridization experiments. WGS data of these isolates were compared with those for the previously isolated VIM-1-producing *Salmonella* Infantis isolates from pigs and poultry. Among 103 samples, one *Salmonella* Goldcoast isolate, one *Salmonella* Infantis isolate, and one *Enterobacter cloacae* isolate carrying the *bla*_{VIM-1} gene were detected. Comparative WGS analysis revealed that the *bla*_{VIM-1} gene was part of a particular Tn21-like transposable element in all isolates. It was located on IncHI2 (ST1) plasmids of ~290 to 300 kb with a backbone highly similar (98 to 100%) to that of reference pSE15-SA01028. SNP analysis revealed a close relationship of all VIM-1-positive *S. Infantis* isolates described since 2011. The findings of this study demonstrate that the occurrence of the *bla*_{VIM-1} gene in German livestock is restricted neither to a certain bacterial species nor to a certain *Salmonella* serovar but is linked to a particular Tn21-like transposable element located on transferable pSE15-SA01028-like IncHI2 (ST1) plasmids, being present in all of the investigated isolates from 2011 to 2017.

IMPORTANCE Carbapenems are considered one of few remaining treatment options against multidrug-resistant Gram-negative pathogens in human clinical settings. The occurrence of carbapenemase-producing *Enterobacteriaceae* in livestock and food is a major public health concern. Particularly the occurrence of VIM-1-producing *Salmonella* Infantis in livestock farms is worrisome, as this zoonotic pathogen is one of the main causes for human salmonellosis in Europe. Investigations on the epidemiology of those carbapenemase-producing isolates and associated mobile genetic elements through an in-depth molecular characterization are indispensable to understand the transmission of carbapenemase-producing *Enterobacteriaceae* along the food chain and between different populations to develop strategies to prevent their further spread.

Citation Roschanski N, Hadziabdic S, Borowiak M, Malorny B, Tenhagen B-A, Projahn M, Kaesbohrer A, Guenther S, Szabo I, Roesler U, Fischer J. 2019. Detection of VIM-1-producing *Enterobacter cloacae* and *Salmonella enterica* serovars Infantis and Goldcoast at a breeding pig farm in Germany in 2017 and their molecular relationship to former VIM-1-producing *S. Infantis* isolates in German livestock production. *mSphere* 4:e00089-19. <https://doi.org/10.1128/mSphere.00089-19>.

Editor Ana Cristina Gales, Escola Paulista de Medicina/Universidade Federal de São Paulo

Copyright © 2019 Roschanski et al. This is an open-access article distributed under the terms of the [Creative Commons Attribution 4.0 International license](https://creativecommons.org/licenses/by/4.0/).

Address correspondence to Jennie Fischer, jennie.fischer@bfr.bund.de.

* Present address: Nicole Roschanski, Landeslabor Schleswig-Holstein, Neumuenster, Germany; Michaela Projahn, German Federal Institute for Risk Assessment, BfR, Department of Biological Safety, Berlin, Germany; Sebastian Guenther, University of Greifswald, Institute of Pharmacy, Greifswald, Germany.

Received 14 February 2019

Accepted 23 May 2019

Published 12 June 2019

KEYWORDS *Salmonella*, antimicrobial resistance, carbapenem resistance, carbapenemases, pigs, transmission

Carbapenems are among the few remaining treatment options for infections caused by multidrug-resistant Gram-negative bacteria. Emergence of bacteria with acquired resistance against carbapenems in human clinical settings is a major public health issue (1). The discovery of VIM-1 carbapenemase-producing *Escherichia coli* and *Salmonella enterica* subsp. *enterica* serovar *Infantis* (*S. Infantis*) in two German pig (*Salmonella* isolates R25 and R27 and *E. coli* isolates R29 and R178) and one chicken-fattening farm (*Salmonella* isolate R3) in 2011 (2, 3) raised concerns about the spread of this resistance gene in livestock and the development of a new reservoir for the resistance to these last-line antibiotics.

These first findings triggered active monitoring programs in Germany and the European Union (CID 2013/652/EU) (4, 5). Additionally, samplings as well as focused analyses of isolates submitted to the German National Reference Laboratories for *Salmonella* (NRL-Salmonella) and for Antimicrobial Resistance (NRL-AR) are carried out to detect further carbapenemase-producing *Enterobacteriaceae* (CPE) in food and livestock. Data related to CPE findings are continuously analyzed to carefully monitor the occurrence of these CPE along the food chain. These efforts lead to the recovery of further VIM-1-producing *Salmonella* and *E. coli* isolates in German livestock and food. Retrospective investigation of bacterial cultures originating from the studies in 2011 identified one additional VIM-1-producing *S. Infantis* isolate (isolate V363) in a sample from a third pig-fattening farm as well as one serologically rough *S. Infantis* isolate (isolate G-336-1a) from a second chicken fattening farm (6, 7). Analysis of *Salmonella* isolates from routine diagnostics revealed two additional *S. Infantis* isolates from minced pork (15-SA01028) in 2015 and from a sick piglet in 2016 (16-SA00749) (8, 9), respectively. This indicated that VIM-1-producing *Salmonella* isolates were still present in German pig production. Three of the six affected livestock farms were additionally positive for *E. coli* strains carrying bla_{VIM-1} . The bla_{VIM-1} gene was located on an ~300-kb IncHI2 plasmid in the *Salmonella* isolates (sequence of plasmid pRH-R27 [GenBank accession number [LN555650.1](#)] and plasmid pSE15-SA01028 [GenBank accession number [CP026661.1](#)]) (3, 7–10). All but one *E. coli* isolate of sequence type 131 (ST131) belonged to a certain *E. coli* ST88 clone. These *E. coli* isolates harbored the bla_{VIM-1} gene on smaller plasmids (180 to 230 kb) (6, 7, 11). One of the pig-fattening farms (S2, with highest prevalence of VIM-1-producing *Salmonella* and *E. coli*) positive in 2011 was intensively sampled and examined 4 years after the first finding. Despite intensive attempts, no VIM-1-positive isolate could be detected. Evaluation of farm-specific keeping and management parameters revealed that disinfection measures were still at a very high level, but the current pigs originated from a different pig breeding farm (12).

Moreover, in 2016, a VIM-1-producing *E. coli* ST10 strain was isolated in Germany from retail seafood originating from Italy (13). The characteristics of the bla_{VIM-1} -associated mobile genetic elements from this isolate shared no similarities with those of the VIM-1-positive isolates from the German livestock sector. In this case, the bla_{VIM-1} -harboring class 1 integron carried further *aacA4*, *aph(3')-XV*, *aadA1*, and *catB2* gene cassettes in its variable region and was associated with a Tn3-like transposon on an IncY plasmid. In the livestock isolates, the bla_{VIM-1} -harboring class 1 integron carried further *aacA4-aadA1* gene cassettes and was associated with a Tn21-like transposon on IncHI2 plasmids.

Carbapenems are not licensed for use in livestock. However, administration of any other beta-lactam antibiotic or other antimicrobial classes with resistance genes genetically linked to carbapenemase-encoding genes might trigger the selection of CPE and the spread of the respective mobile genetic elements. This may have contributed to the recurrent detection of bla_{VIM-1} -containing *E. coli* as well as *S. Infantis* over a period of 5 years (2011 to 2016). However, the sporadic occurrence of CPE, their low

TABLE 1 Phenotypic and genotypic characteristics of isolates derived from farm N2 and previously described *bla*_{VIM-1}-positive *S. Infantis* isolates^a

Isolate	Yr of isolation	Source, farm origin (sample name)	Species or serovar (MLST)	MICs (mg/liter) of ETP, IMP, and MEM (April 2019)	MICs (mg/liter) of FOT and TAZ	Presence of pAmpC- or carbapenemase-encoding genes	Reference
N2-8	2017	Collected feces, swine farm N2 (FD1-SK2)	<i>Enterobacter cloacae</i>	1, 4, 2	>64, >128	<i>bla</i> _{ACC-1} , <i>bla</i> _{ACT-7} -like, <i>bla</i> _{VIM-1}	This study
N2-6	2017	Manure, swine farm N2	<i>S. Goldcoast</i> (ST358)	≤0.015, 0.25, 0.006	32, 128	<i>bla</i> _{ACC-1}	This study
N2-5	2017	Collected feces, swine farm N2 (FD1-SK1)	<i>S. Goldcoast</i> (ST358)	≤0.015, 0.25, ≤0.03	≤0.25, 0.5		This study
N2-4	2017	Boot swabs, swine farm N2 (FD1-Sta)	<i>S. Goldcoast</i> (ST358)	≤0.015, 0.25, ≤0.03	≤0.25, 0.5		This study
N2-3	2017	Boot swabs, swine farm N2 (A4-Sta)	<i>S. Goldcoast</i> (ST358)	≤0.015, 0.25, ≤0.03	≤0.25, 0.5		This study
N2-2	2017	Boot swabs, swine farm N2 (A4-Sta)	<i>S. Goldcoast</i> (ST358)	0.5, 4, 2	>64, >128	<i>bla</i> _{ACC-1} , <i>bla</i> _{VIM-1}	This study
N2-1	2017	Collected feces, swine farm N2 (FD1-SK2)	<i>S. Infantis</i> (ST32)	0.125, 2, 0.5	>64, >128	<i>bla</i> _{ACC-1} , <i>bla</i> _{VIM-1}	This study
16-SA00749	2016	Sick piglet, swine farm N1	<i>S. Infantis</i> (ST32)	0.25, 4, 2	>64, >128	<i>bla</i> _{ACC-1} , <i>bla</i> _{VIM-1}	9
15-SA01028	2015	Minced pork meat	<i>S. Infantis</i> (ST32)	0.5, 4, 2	>64, >128	<i>bla</i> _{ACC-1} , <i>bla</i> _{VIM-1}	9
G-336-1a	2012	Collected dust, poultry farm G78	<i>S. Infantis</i> (ST32) serologically rough	>2, 8, 16	>64, >128	<i>bla</i> _{ACC-1} , <i>bla</i> _{VIM-1}	6
V363	2012	Single animal feces, swine farm S3	<i>S. Infantis</i> (ST32) nonmotile	2, 8, 4	>64, >128	<i>bla</i> _{ACC-1} , <i>bla</i> _{VIM-1}	7
R27	2011	Pooled feces, swine farm S2	<i>S. Infantis</i> (ST32) nonmotile	0.25, 4, 0.5	>64, >128	<i>bla</i> _{ACC-1} , <i>bla</i> _{VIM-1}	3
R25	2011	Boot swabs, swine farm S1 environment	<i>S. Infantis</i> (ST32) nonmotile	0.25, 4, 0.5	>64, >128	<i>bla</i> _{ACC-1} , <i>bla</i> _{VIM-1}	3
R3	2011	Collected dust, poultry farm G1	<i>S. Infantis</i> (ST32) nonmotile	0.25, 4, 0.5	>64, >128	<i>bla</i> _{ACC-1} , <i>bla</i> _{VIM-1}	3

^aETP, ertapenem; IMP, imipenem; MEM, meropenem; FOT, cefotaxime; TAZ, ceftazidime.

detection rates accompanied by the complexity of trade routes within the German pig production system, complicates trace-back approaches. Nevertheless, based on analysis of available background information of affected farms we identified a piglet-producing farm (N2) suspicious for being linked to at least two previously affected pig farms (including S2) and collected fecal and environmental samples on this farm. In order to characterize the mobile genetic elements and phylogeny of the isolates involved in this occurrence, we carried out in-depth molecular analysis using whole-genome sequencing (WGS) of isolates recovered from this piglet-producing farm and compared the data with sequence data from all seven VIM-1-positive *S. Infantis* isolates previously described.

RESULTS

Phenotypic and genotypic characterization of isolates and *bla*_{VIM-1}-associated mobile genetic elements. (i) Isolates from pig breeding farm N2. Using the modified DIN EN ISO 6579 method, six *Salmonella* isolates were obtained from four samples (Table 1). Isolates were identified by classical serology as either *S. Infantis* ($n = 1$; isolate N2-1) or *S. Goldcoast* ($n = 5$; isolates N2-2 to N2-6). Results were confirmed using the SISTR *Salmonella in silico* typing tool. The *S. Infantis* isolate N2-1 (collected feces, rearing

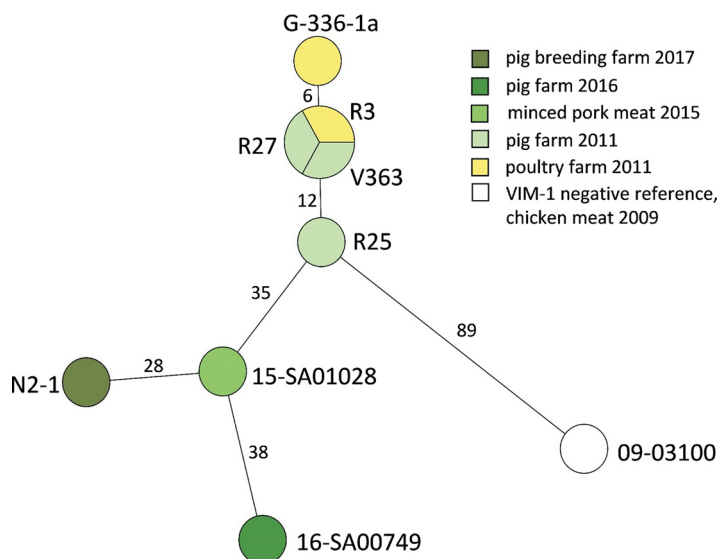


FIG 1 Minimum spanning tree of *bla*_{VIM-1} harboring *S. Infantis* isolates based on genome SNP analysis with the complete genome of *S. Infantis* 15-SA01028. Branches are labeled with the number of SNP differences. Darker greenish colors reflect most recent isolates obtained. Isolate 09-03100 served as the nearest VIM-1-negative *S. Infantis* neighbor for comparison purposes.

quarter 1) as well as *S. Goldcoast* isolate N2-2 (boot swab, farrowing barn 4) tested positive for the *bla*_{VIM-1} gene by PCR. Four *S. Goldcoast* isolates, detected in boot swabs ($n = 2$), collected feces ($n = 1$), and manure ($n = 1$), did not carry the *bla*_{VIM-1} gene. All five *S. Goldcoast* isolates belonged to ST358 (Table 1). The *S. Infantis* isolate, like all other previously described VIM-1-positive *S. Infantis* isolates, belonged to ST32. Neither a *bla*_{VIM-1}-negative *S. Infantis* isolate nor any other nonmotile *Salmonella* spp. were detected.

One *bla*_{VIM-1}-positive *Enterobacter cloacae* isolate (N2-8) was found through reanalysis of the collected fecal sample harboring the *bla*_{VIM-1}-positive *S. Infantis* using nonselective preenrichment followed by a selective cultivation in LB medium supplemented with 1 mg/liter of cefotaxime sodium salt (CTX).

An overview of isolate characteristics is depicted in Table 1. Pulsed-field gel electrophoresis (PFGE) restriction patterns of all previously isolated *S. Infantis* isolates and the recently discovered isolate N2-1 were highly similar (see Fig. S1 in the supplemental material). Likewise, the PFGE restriction patterns of all five *S. Goldcoast* isolates were alike (Fig. S2). MIC testing of isolates harboring the *bla*_{VIM-1} gene revealed a low-level resistance against the tested carbapenems but a high-level resistance against the third-generation cephalosporins tested (Table 1) in contrast to isolates lacking the *bla*_{VIM-1} gene.

(ii) Phylogeny and SNP analysis of *S. Infantis* isolates. Mapping of raw reads against the PacBio chromosome sequence of isolate 15-SA01028 and subsequent single nucleotide polymorphism (SNP) analysis revealed 0 to 51 SNPs per chromosome. Isolates from 2011 and 2012 showed fewer SNPs (0 to 18), while their distance to isolates obtained in 2015 to 2017 was 28 to 51 SNPs. All *bla*_{VIM-1}-harboring isolates clustered separately with a distance of >89 SNPs to the closest *bla*_{VIM-1}-negative *S. Infantis* relative, isolate 09-03100 (14) (Fig. 1 and Table S2).

(iii) Mobile genetic elements. S1 PFGE hybridization experiments revealed the presence of *bla*_{VIM-1}-harboring 290- to 300-kb plasmids for isolates N2-1 (*S. Infantis*), N2-2 (*S. Goldcoast*), and N2-8 (*E. cloacae*) (Fig. S2). WGS results confirmed presence of IncHI2 (ST1) plasmids with consensus sequence lengths between 304 and 311 kb and sequence similarities of 98 to 100% to reference plasmid pSE15-SA01028 (Table 2). Detailed comparison of the plasmid sequences, visualized using the BLAST Ring Image Generator (BRIG) (Fig. 2), revealed that the main differences between plasmids are

TABLE 2 Occurrence and molecular characteristics of pSE15-SA01028-like plasmids in isolates derived from farm N2 and previously *bla*_{VIM-1}-positive isolates from food, pig, and poultry farms in Germany

Isolate	Presence of pAmpC- or carbapenemase-encoding gene(s)	Size (kb) of <i>bla</i> _{VIM-1} -harboring plasmids ^a	Presence of IncHI2 plasmid ^b	Total consensus sequence length (bp)	% sequence identity to p15-SA01028	Tn21-like variant
N2-8	<i>bla</i> _{ACC-1} , <i>bla</i> _{ACT-7-like} , <i>bla</i> _{VIM-1}	300	IncHI2 (ST1)	307.594	99	As pSE15-SA01028
N2-6	<i>bla</i> _{ACC-1}		IncHI2 (ST1)	286.971	92	
N2-5				<30	<10	
N2-4				<30	<10	
N2-3				<30	<10	
N2-2	<i>bla</i> _{ACC-1} , <i>bla</i> _{VIM-1}	300	IncHI2 (ST1)	310.794	100	As pSE15-SA01028
N2-1	<i>bla</i> _{ACC-1} , <i>bla</i> _{VIM-1}	290	IncHI2 (ST1)	304.382	98	Absence of In1516 ^c
16-SA00749	<i>bla</i> _{ACC-1} , <i>bla</i> _{VIM-1}	290	IncHI2 (ST1)	298.680	96	As pSE15-SA01028
15-SA01028	<i>bla</i> _{ACC-1} , <i>bla</i> _{VIM-1}	300	IncHI2 (ST1)	310.921	100	Reference (CP026661)
G-336-1a	<i>bla</i> _{ACC-1} , <i>bla</i> _{VIM-1}	300	IncHI2 (ST1)	305.248	98	Absence of In1516 ^c
V363	<i>bla</i> _{ACC-1} , <i>bla</i> _{VIM-1}	300	IncHI2 (ST1)	310.162	100	As pSE15-SA01028
R27	<i>bla</i> _{ACC-1} , <i>bla</i> _{VIM-1}	300	IncHI2 (ST1)	310.871	100	As pSE15-SA01028
R25	<i>bla</i> _{ACC-1} , <i>bla</i> _{VIM-1}	300	IncHI2 (ST1)	310.921	100	As pSE15-SA01028
R3	<i>bla</i> _{ACC-1} , <i>bla</i> _{VIM-1}	300	IncHI2 (ST1)	310.921	100	As pSE15-SA01028

^aBased on S1 restriction and subsequent hybridization.

^bBased on CGE batch upload analysis.

^cAs described by Falgenhauer et al. (10).

based on structural changes in the *bla*_{VIM-1}-harboring Tn21-like transposon. In all plasmids the *bla*_{VIM-1} gene was part of an In110 class 1 integron accompanied by the genes *aacA4* and *aadA1* in its variable region, as previously described for pRH-R27 (10). In p15SA-01028 and all isolates but G336-1 and N2-1, however, an insertion of a further In1516 class 1 integron harboring an *ereA* and an *aadA1* gene cassette was observed. This additional integron was located upstream of the IS1326 module and was itself flanked upstream by cryptic coding DNA sequences, comprising several genes commonly found associated with other mobile genetic elements (Fig. 3). Although the *bla*_{VIM-1} gene was not present in the *S. Goldcoast* isolate N2-6 from manure, a 93% identity to pSE15-SA01028 could be observed for the plasmid harbored by this isolate (286.971-bp consensus sequence length, confirmed by an ~290-kb band in the S1 PFGE [Table 2 and Fig. S2]). In this isolate, absence of the *bla*_{VIM-1} gene is due to the lack of the complete Tn21-like transposon in this plasmid region that could be confirmed through closing the plasmid sequence via PCR sequencing at this position.

DISCUSSION

In this study, two *bla*_{VIM-1}-producing *Salmonella* isolates (one *S. Infantis* and one *S. Goldcoast*) and one *bla*_{VIM-1}-producing *Enterobacter cloacae* isolate were isolated within an investigation of a farrow-to-wean farm suspicious for having connections to two previously pig-associated *bla*_{VIM-1} findings in Germany.

These findings indicate that in 2017 still a source, bearing potential to transfer VIM-1-producing isolates to German pig producers, was present. However, the low number of obtained VIM-1-producing isolates, despite an extensive sampling effort, suggests a very low prevalence of VIM-1-producing isolates in this farm. In-depth molecular analysis using WGS techniques revealed a close relationship of all *bla*_{VIM-1}-harboring *S. Infantis* isolates from German livestock recovered until now. The high degree of molecular similarity of isolates and associated mobile genetic elements hints at a connection of affected farms that is not obvious through analysis of available background information, especially for the poultry-related findings. Since *S. Infantis* was detected in five pig-associated cases and two positive chicken-fattening farms, this serovar might play a particular role in the occurrence of *bla*_{VIM-1}. However, comparative analysis in this study revealed that *bla*_{VIM-1} in Germany is not restricted to a certain serovar but might be regarded as a long-term multispecies-related occurrence, linked to a certain pSE15-SA01028-like IncHI2 plasmid. All nine *bla*_{VIM-1}-positive *Salmonella* isolates as well as the *bla*_{VIM-1}-positive *E. cloacae* isolate harbored this gene on ~290-

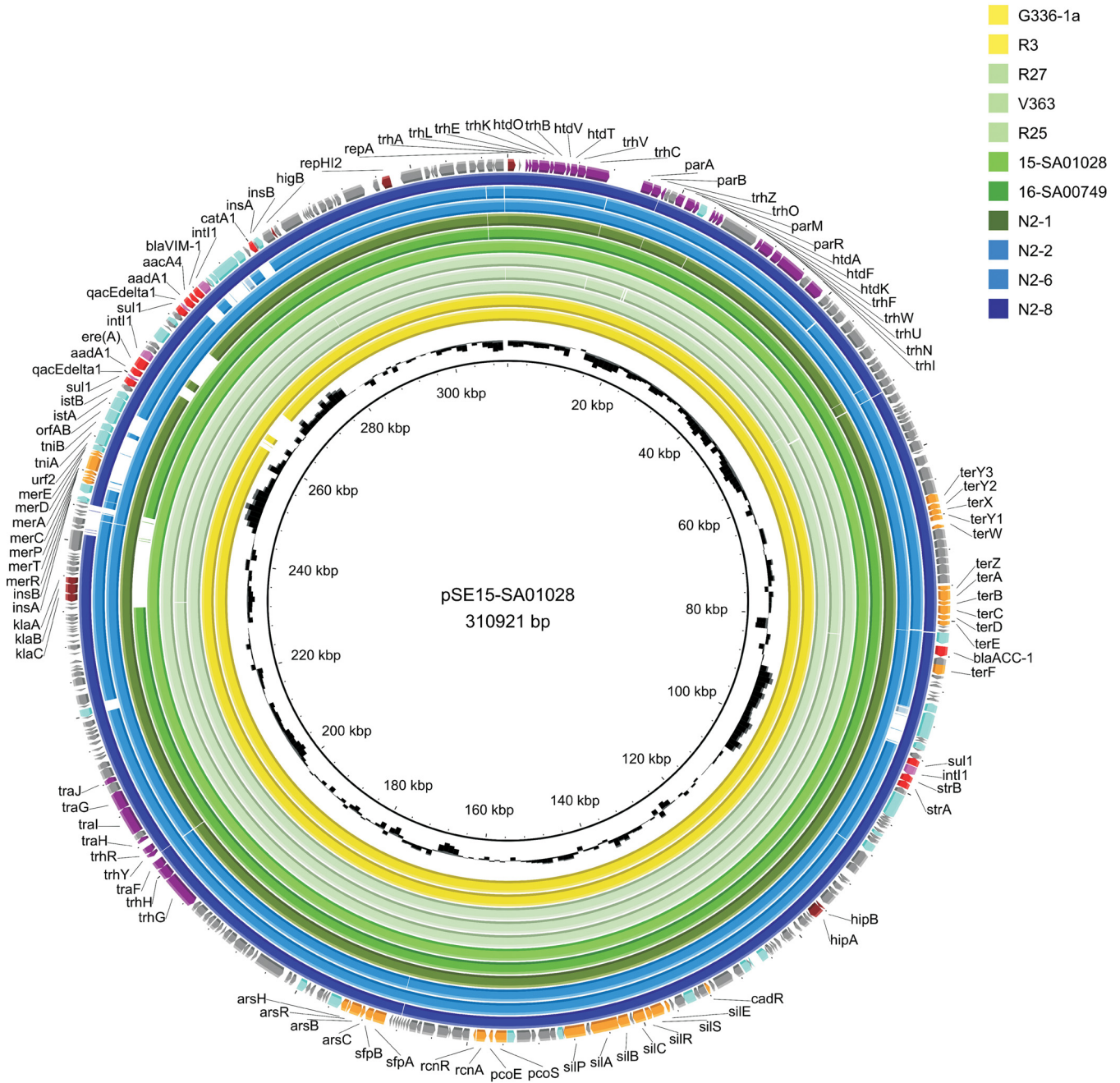


FIG 2 Comparative plasmid maps (BRIG) of isolates from farm N2 and *bla*_{VIM-1}-harboring *Salmonella* isolates from previous studies, showing sequence identities of >90% to reference pSE15-SA01028 (GenBank accession number [CP026661](https://www.ncbi.nlm.nih.gov/nuccore/CP026661)). Isolates G336-1a and N2-1 lack the *In1516* class 1 integron harboring *ereA* and *aadA1* gene cassettes downstream of the *bla*_{VIM-1}-containing class 1 integron. This integron was previously not described on pRH-R27 by Falgenhauer et al. (10). In isolate N2-6, PCR-based sequence gap closure revealed that the whole *bla*_{VIM-1}-harboring Tn21-like transposon is absent in this plasmid region. Blue circles depict plasmids of *S. Infantis* isolates from pigs, yellow circles of *S. Infantis* from poultry farms, and green circles of *S. Goldcoast* isolates, and the red circle depicts the plasmid of the *E. cloacae* isolate.

to 300-kb *InCh12* (ST1) plasmids with a backbone of 96 to 100% similarity to pSE15-SA01028 and linked to a certain Tn21-like transposable element. Interestingly, mobility of the Tn21-like transposon carrying the *bla*_{VIM-1} gene could be verified through the detection of *S. Goldcoast* N2-6 (isolated from manure) with a plasmid showing 92% identity to pSE15-SA01028 but lacking the complete *bla*_{VIM-1}-containing Tn21-like transposon. However, since active transposition of Tn21-like transposable elements is a replicative mechanism, the loss of the whole transposon has possibly been mediated by

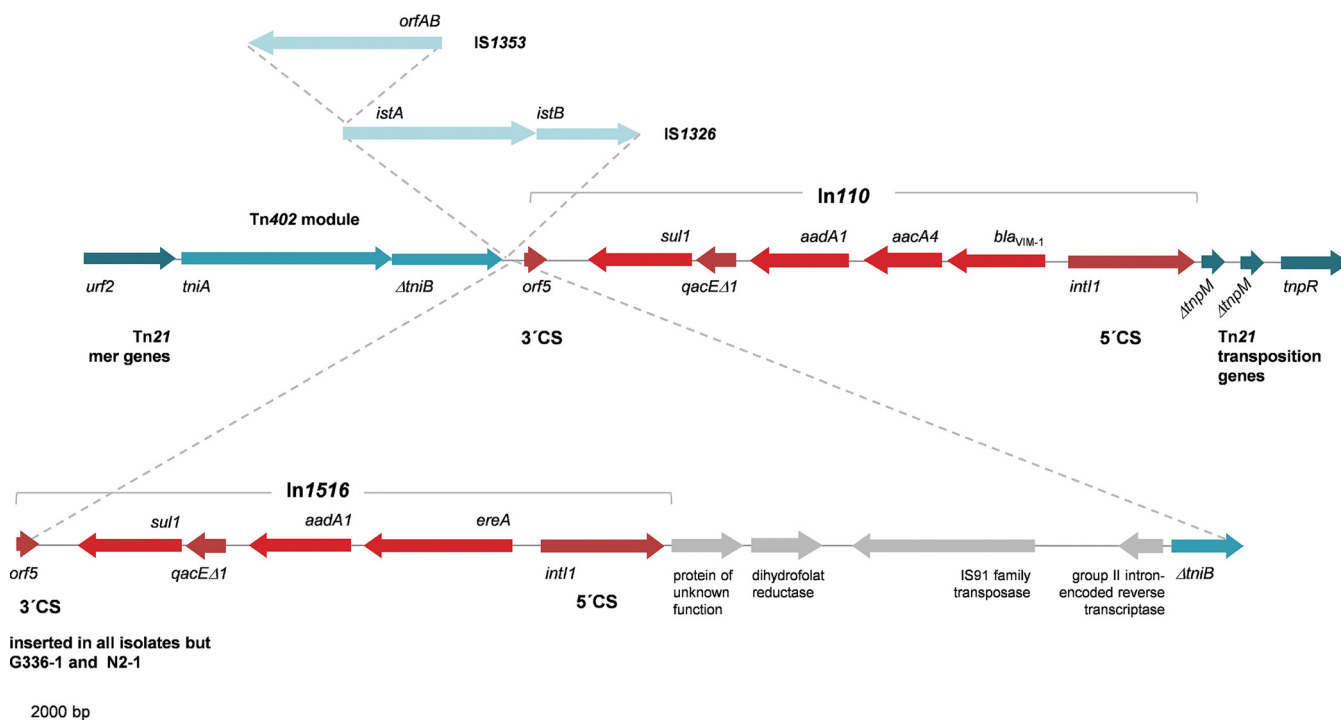


FIG 3 Observed variants of the Tn21-like transposon already described by Falgenhauer et al. (10), bearing the *bla_{VIM-1}* gene on a class 1 integron with additional resistance genes *aacA4* and *aadA1* in its variable region. Cyan arrows represent transposon-associated genes, red ones antimicrobial resistance and class 1 integron-associated genes, and gray arrows cryptic DNA sequences. The class 1 integron harboring *ereA* and *aadA1* gene cassettes, downstream of the *bla_{VIM-1}*-containing class 1 integron, was previously not described on pRH-R27 by Falgenhauer et al. (10) and was only present in isolates N2-2, N2-8, 16-SA00749, 15-SA01028, V363, R27, R25, and R3.

homologous recombination involving two flanking *IS1* elements (*insA/insB* [Fig. 2]), as in isolate N2-6, only one *insA/insB* copy is left. Mobility of this transposon was previously also proven through *in vitro* experiments, revealing acquisition of the *bla_{VIM-1}*-carrying Tn21 on an IncI1 plasmid that was collocated in a VIM-1-producing *E. coli* isolate (6). The sole presence of this certain *bla_{VIM-1}*-carrying Tn21 in any bacterial species or plasmid could be a hint of a potential relation to the *bla_{VIM-1}* findings in German livestock. It is noteworthy that the *ereA-aadA1*-harboring integron downstream of the *bla_{VIM-1}*-*aacA4-aadA1* integron was previously not described on pRH-R27 by Falgenhauer et al. (10). This discrepancy might be an artifact from Roche 454 short-read assembly or could be based on loss of this region during the sample preparation for sequencing by Falgenhauer et al. (10). The absence of this region could also be observed for isolates G336-1a and N2-1.

Transfer of the pSE15-SA01028-like IncHI2 plasmids seems to be less efficient, since *in vitro* transfer of the *bla_{VIM-1}* plasmid at least starting from *S. Infantis* is difficult to prove (3, 10). However, the presence of this plasmid in *S. Goldcoast*, *E. cloacae*, and several *E. coli* STs (6, 7, 11) unambiguously confirms its transferability *in vivo*.

In addition, the results of the SNP analysis of the VIM-1-producing *S. Infantis* isolates indicate that transfer *in vivo* might be a rare event and that there might have been just a sole acquisition event in one common *S. Infantis* ancestor cell. All eight *bla_{VIM-1}*-positive *S. Infantis* isolates show fewer than 51 SNPs (Table S2 and Fig. 1), confirming their close genetic relationship that had already been assumed on the basis of PFGE analysis (3). Moreover, they build a separate cluster (>89 SNPs to the closest relative, 09-03100) within the *S. Infantis* population circulating in German food and livestock (14).

Among this cluster, isolates from 2011/2012 share the lowest number of SNPs (0 to 18 SNPs [Fig. 1 and Table S2]). Assuming in *S. Infantis* a SNP rate at least as high as in *S. Typhimurium* with 3 to 5 SNPs per year per chromosome (15), this sole transfer event

might have occurred indeed shortly before or within the time frame of the first findings of VIM-1-positive *Enterobacteriaceae* in 2011/2012. In fact, the number of SNPs between the isolates of our study suggests an even higher SNP rate for *S. Infantis*. For *Salmonella*, disease outbreaks are usually characterized by SNP variations of 0 to 30 and varying within each serovar and clonal lineage (16). Finally, SNP- and plasmid-based analyses in this study indicate that this occurrence of bla_{VIM-1} in Germany might be regarded as a single low-level multispecies event that drags on for obviously more than 6 years.

Following the hypothesis of a single transfer event into *S. Infantis*, the acquisition of this VIM-1 metallo-beta-lactamase-encoding plasmid might have been associated with an alteration of *Salmonella* surface antigens leading to the nonserotypable phenotype using the Kaufmann-White scheme, as this is only observed for the *S. Infantis* isolates from 2011/2012. A similar phenomenon was already described for an *S. Typhimurium* strain acquiring a bla_{VIM-2} gene. In this case, acquisition of the bla_{VIM-2} gene resulted in alterations in micro- and macroscopic morphology, a reduced growth rate, and decreased motility (17). Since *S. Infantis* isolates from 2015 and later show a classical serological *S. Infantis* phenotype, subsequent genetic adaptations might have allowed conquest of serological constraints.

Although no bla_{VIM-1} -harboring *E. coli* was detected in this study, recent reports of *E. coli* harboring highly similar or identical bla_{VIM-1} -bearing plasmids (6, 11) suggest the potential existence of a low-abundance *E. coli* subpopulation in the German livestock sector that might be able to pop up through antibiotic treatment like was assumed for the VIM-1-producing *E. coli* ST88 contamination in pig farm S2 (7, 12).

The detection of the *E. cloacae* only through reanalysis of samples positive for VIM-1-producing *Salmonella* underlines that the detection of CPE in livestock samples is challenging due to their low prevalence and the low-level expression of carbapenemase-encoding genes under nonselective pressure (MICs of CPE in this study ranged from 0.12 to 4 mg/liter). Low-level expression of the bla_{VIM-1} gene in isolates that had not undergone antibiotic selective pressure was already reported for bla_{VIM-1} *Salmonella* and *E. coli* isolates from German livestock and food (3, 13). However, a higher level of carbapenem resistance has been observed through their cultivation in broth supplemented with a carbapenem (3). Differences in MICs between isolates of this study (although harboring a highly similar or identical plasmid) or after reanalysis of isolates several years after their first MIC testing underline that the level of carbapenem resistance might be influenced by different origins and evolution of isolates (reflected through SNP differences) or even isolate handling conditions (different isolation, cultivation, and storing conditions in the different studies). These conditions might affect the expression of the bla_{VIM-1} gene or the copy number of the plasmids (e.g., through antibiotic selective pressure).

In human clinical settings in Germany, bla_{VIM-1} was first described in 2007 (18); today, it is the second most frequently detected carbapenemase gene in *Enterobacteriaceae*, with *E. cloacae* being the main bla_{VIM-1} reservoir (19). In contrast, no VIM-1-producing *Salmonella* isolate from humans in Germany has been described so far (20). Currently there is no literature available on bla_{VIM-1} -harboring plasmids in human clinical isolates in Germany. This raises questions on the role of the *E. cloacae* isolate N2-8 serving either as one of the recipients that took up the plasmid from *S. Infantis* or as the initial donor of the bla_{VIM-1} plasmid. Further studies have to elucidate whether the bla_{VIM-1} gene in human clinical *E. cloacae* isolates is also associated with pSE15-SA01028-like plasmids. Answers to these questions require a "one health" approach, including expanded in-depth comparative analysis, encompassing VIM-1-harboring plasmids and isolates circulating in the human population and the environment in Germany.

Since the first findings of CPE in livestock, a number of studies have reported carbapenemase-producing bacteria with different carbapenemase-encoding genes in food-producing animals, including pigs, and companion animals worldwide (21–26). Whether the globally increasing reports on CPE in livestock and along the food chain

are due to increased awareness of this issue followed by intensified screening activities or if this reflects the current emergence of livestock as a new reservoir for CPE, probably triggered through their increased emergence in the human clinical sector, needs to be further investigated.

In Germany, the persistence of a *bla*_{VIM-1} gene located on a Tn21-like transposon on a transferable plasmid was shown in recent years. Evaluation of WGS data just allows assumptions on the source of the *bla*_{VIM-1} gene on the farms; the agent that actually served as the initial bacterial source remains unknown. However, *S. Infantis*, which is frequently found in poultry and pigs in Germany and is among the main causes of human salmonellosis in Europe (27, 28), may play a certain role in this case. The fact that the VIM-1-producing *S. Infantis* was isolated in each of the affected farms but is rarely found through screening or retrospective analysis (6, 7) suggests that this serovar serves at least as an appropriate reservoir, stably hosting this particular *bla*_{VIM-1} pSE15-SA01028-like plasmid. Finally, consideration must be given to how to handle the sources of these VIM-1-producing isolates, such as the breeding farm under investigation in this study. Although persistence of CPE in animal surroundings was shown to not be dependent on selective pressure (29), antibiotic treatments such as those with amoxicillin might have triggered their persistence in this occurrence. Particular attention should be paid to detailed analysis of the epidemiological situation on the farm, i.e., to determine in which groups of sows the isolates circulate. It should also be examined whether a source of entry from the environment via feed or other vectors can be identified. Based on these results, specific action should be taken to stop the introduction and circulation of these bacteria within the farm and to minimize the risk of spreading the bacteria to fattening farms. Groups of sows identified to be infected with VIM-1-producing *Enterobacteriaceae* should be replaced and affected facilities or stables should undergo strict cleaning, disinfection, and hygiene measures. Since *Salmonella* plays a special role in the current infection, a *Salmonella* vaccination program might also be considered to support the eradication of these carbapenemase-producing *Salmonella* strains from the herd.

MATERIALS AND METHODS

Sampling at the pig farm. Sampling of the breeding farm was performed during on-site visitation by the Institute for Animal Hygiene and Environmental Health of Freie Universität Berlin. It covered three breeding centers, four gestation stalls, five farrowing barns (each containing approximately 75 farrowing pens), and five rearing units. During the visit, one breeding center and one farrowing barn were not in use. The type and number of samples varied depending on the number of sows/piglets and subunits in each barn (Table S1). In the gestation stalls and the rearing quarters, mostly 10 to 15 sows or weaners were housed per pen. From each of the units approximately five distinct fecal samples were collected and pooled per pen. Samples taken per pen were additionally pooled as shown in Table S1. In the breeding centers and the farrowing barns, where the sows were housed in individual stands, feces from several animals were collected and pooled (Table S1). Boot swab samples were taken from the central corridor of each housing unit. Liquid manure samples were collected from each of the three manure pits.

Laboratory analyses of the samples: screening for CPE and *Salmonella* spp. (i) Preenrichment of samples. All samples were processed within 24 h after sampling. Of each pool of fecal samples, 20 g was inoculated in 180 ml of peptone water (buffered peptone water; Carl Roth GmbH, Karlsruhe, Germany) without any supplement as recommended by the European Union Reference Laboratory for Antimicrobial Resistance (EURL-AR [<https://www.eurl-ar.eu/protocols.aspx>]). Boot swabs were incubated in 100 ml of buffered peptone water. From each liquid manure sample, 5 g was inoculated in 45 ml of peptone water. After an overnight incubation at 37°C, aliquots of each culture were stored at –80°C for future investigations. All cultures were subjected to CPE detection procedures as follows.

(ii) DNA preparation, screening, and identification of carbapenemase-encoding genes using PCR. Each of the incubated peptone water cultures was tested with direct real-time PCR. The DNA preparation as well as the real-time PCR based assay, detecting the carbapenemase genes *bla*_{VIM-1}, *bla*_{KPC-1}, *bla*_{NDM-1}, *bla*_{OXA-48}, and *bla*_{GES-1}, were performed as previously described (30). Subsequent bacterial species identification was performed using matrix-assisted laser desorption ionization–time of flight (MALDI-TOF) mass spectrometry (MS) (MALDI Microflex LT and Biotyper database; Bruker Daltonics, Bremen, Germany).

(iii) Isolation of CPE via incubation on selective agar plates. The overnight cultures were streaked on (i) ChromID Carba (bioMérieux, France) as well as (ii) MacConkey agar plates containing 1 mg/liter of cefotaxime sodium salt (CTX; Merck KGaA, Darmstadt, Germany). On the following day, MALDI-TOF MS (MALDI Microflex LT and Biotyper database; Bruker Daltonics, Bremen, Germany) was performed from randomly selected colonies (one colony per morphology was analyzed per plate) to determine bacterial

species. Subsequent confirmation of the presence of the carbapenemase-encoding gene was determined by real-time PCR as mentioned above (see “DNA preparation, screening, and identification of carbapenemase-encoding genes using PCR”).

(iv) Isolation of *Salmonella* following a modified DIN EN ISO 6579 protocol adapted to the detection of nonmotile *Salmonella* variants. As *S. Infantis* with different serological characteristics (serologically rough, nonmotile *S. enterica* group C with antigenic formula “6,7:-:” or classically typed as *S. Infantis* 6,7:r:1,5) were found in previously affected pig and poultry farms, a parallel in-depth screening for *Salmonella* was performed. *Salmonella* species isolates were obtained according to ISO 6579: 2002+Amd 1:2007, with subsequent serotyping according to the White-Kauffmann-Le Minor scheme (31).

Since the VIM-1-producing *S. Infantis* isolates from 2011/2012 were nonmotile, the DIN EN ISO 6579 protocol was expanded and included both selective enrichment with Rappaport-Vassiliadis medium with soya (RVS-Bouillon) for nonmotile *Salmonella* variants and modified semisolid Rappaport-Vassiliadis medium (MSRV) for motile variants. Furthermore, cultures were incubated for 48 h on xylose-lysine-deoxycholate agar (XLD agar) with and without 1 mg/liter of CTX.

(v) Detailed analyses of single cultures. Samples that tested negative for CPE but positive for VIM-1-producing *Salmonella* by using the modified DIN EN ISO 6579 protocol were analyzed a second time. The stored (–80°C) cultures as well as the stored primary overnight cultures were revitalized (1:100) in 5 ml of LB medium containing 1 mg/liter of CTX. The derived cultures were subsequently spread on ChromID Carba plates (bioMérieux, France) and MacConkey agar plates containing 1 mg/liter of CTX and 0.125 mg/liter of meropenem (MEM). Single colonies were selected for species identification using MALDI-TOF MS followed by a CPE status confirmation using real-time PCR, as described in “DNA preparation, screening, and identification of carbapenemase-encoding genes using PCR” above.

Phenotypic and genotypic characterization of the carbapenemase-producing isolates. (i) Antimicrobial susceptibility testing. Determination of MICs of the carbapenems ertapenem, meropenem, and imipenem for presumptive CPE was carried out according to Commission Implementing Decision 2013/652/EU on the monitoring and reporting of antimicrobial resistance in zoonotic and commensal bacteria. MICs were determined/redetermined using the broth microdilution method and following guidelines described by the Clinical and Laboratory Standards Institute (CLSI) (32, 33), including, among other antimicrobial substances, the third-generation cephalosporins cefotaxime and ceftazidime and the carbapenems meropenem, ertapenem, and imipenem.

(ii) PFGE and Southern blot hybridization. CPE and *Salmonella* isolates underwent XbaI and S1 nuclease restriction of bacterial DNA and subsequent pulsed-field gel electrophoresis (PFGE) (34) using the CHEF-DR III system (Bio-Rad Laboratories GmbH, Munich, Germany) as previously described (35).

To determine the localization of the *bla*_{VIM-1} gene in these strains, Southern blot and hybridization analyses of S1 PFGE gels with a digoxigenin-labeled *bla*_{VIM-1} probe were conducted (35).

WGS. (i) Library preparation. All *Salmonella* isolates and isolates harboring a *bla*_{VIM-1} gene were subjected to whole-genome sequencing (WGS) analysis. Liquid LB medium containing 1 mg/liter of CTX was inoculated with a single colony grown on LB agar. Broths were cultivated under shaking conditions (180 to 220 rpm) at 37°C for 14 to 16 h. DNA was isolated using the PureLink genomic DNA minikit (Invitrogen, Carlsbad, CA) followed by preparation of sequencing libraries using the Nextera XT DNA sample preparation kit (Illumina, San Diego, CA) according to the manufacturer’s protocol. Paired-end sequencing was performed in 2 × 251 cycles on the Illumina MiSeq benchtop using the MiSeq Reagent v3 600-cycle kit (Illumina).

(ii) Comparative analysis of WGS data of isolates and *bla*_{VIM-1}-harboring plasmids. Raw reads were trimmed using trimmomatic (36), and trimmed sequencing data were *de novo* assembled using SPAdes (<https://cge.cbs.dtu.dk/services/SPAdes/>). Assemblies led to an average contig number of 169 with an average coverage of 67. Contig sequences allowed determination of multilocus sequence type (MLST), plasmid multilocus sequence type (pMLST), and resistance gene profiles using the Bacterial Analysis Pipeline-Batch Upload from the Center for Genomic Epidemiology (CGE; <http://www.genomicepidemiology.org>). Kmer-Finder (37) was used to confirm MALDI-TOF species identification and SISTR (38) for *Salmonella* serovar confirmation. Mapping of raw reads against the PacBio bacterial chromosome sequence of the meat-derived *bla*_{VIM-1}-harboring *S. Infantis* isolate 15-SA01028 (GenBank accession number CP026660.1) (8) and subsequent SNP analysis of *Salmonella* isolates were carried out with the BioNumerics software (v7.6; Applied Maths, Ghent, Belgium). The *bla*_{VIM-1}-negative *S. Infantis* isolate 09-03100 was included in SNP analysis, as this isolate represents the closest relative among the investigated isolates from the national strain collection of the NRL *Salmonella* (14). In terms of plasmid sequence comparison, raw reads were mapped against the PacBio sequence of pSE15-SA01028 (GenBank accession number CP026661.1), using CLC Genomics workbench 9.5. Visualization of differences in plasmid backbones was performed with BLAST Ring Image Generator 0.95 (BRIG) (39). The absence of the *bla*_{VIM-1}-harboring Tn21-like transposon in the plasmid sequence of isolate N2-6 was confirmed by plasmid closure using PCR, followed by sequencing as previously described (35).

Data availability. Whole-genome raw sequence data of all *bla*_{VIM-1}-positive isolates and the *S. Infantis* *bla*_{VIM-1}-negative isolate 09-03100 were submitted to the ENA database under the following accession numbers: for N2-1, [ERS2958092](https://ENA/submitter/ERS2958092); N2-2, [ERS2958093](https://ENA/submitter/ERS2958093); N2-3, [ERS2958094](https://ENA/submitter/ERS2958094); N2-4, [ERS2958095](https://ENA/submitter/ERS2958095); N2-5, [ERS2958096](https://ENA/submitter/ERS2958096); N2-6, [ERS2958097](https://ENA/submitter/ERS2958097); N2-8, [ERS2958098](https://ENA/submitter/ERS2958098); R3, [ERS2154041](https://ENA/submitter/ERS2154041); R25, [ERS2958099](https://ENA/submitter/ERS2958099); R27, [ERS2958100](https://ENA/submitter/ERS2958100); V363, [ERS2958101](https://ENA/submitter/ERS2958101); G-336-1a, [ERS2101552](https://ENA/submitter/ERS2101552); 15-SA1028, [ERS2488743](https://ENA/submitter/ERS2488743); 16-SA00749, [ERS2488744](https://ENA/submitter/ERS2488744); and 09-03100, [ERS2958102](https://ENA/submitter/ERS2958102).

SUPPLEMENTAL MATERIAL

Supplemental material for this article may be found at <https://doi.org/10.1128/mSphere.00089-19>.

FIG S1, PDF file, 0.1 MB.

FIG S2, PDF file, 0.1 MB.

FIG S3, PDF file, 0.1 MB.

TABLE S1, PDF file, 0.1 MB.

TABLE S2, PDF file, 0.1 MB.

ACKNOWLEDGMENTS

We thank our technicians Heike Rose, Susann Sellenthin, Michael Kuehl, and Martha Brom for committed assistance in the lab. We thank Carlus Deneke for his support processing WGS data. The farmer is gratefully acknowledged for his kind cooperation.

This work was partly funded by German Federal Ministry of Education and Research (funding number 01KI1013B and 01KI1013C as part of the research consortium RESET).

REFERENCES

- Tangden T, Giske CG. 2015. Global dissemination of extensively drug-resistant carbapenemase-producing Enterobacteriaceae: clinical perspectives on detection, treatment and infection control. *J Intern Med* 277:501–512. <https://doi.org/10.1111/joim.12342>.
- Fischer J, Rodriguez I, Schmoger S, Friese A, Roesler U, Helmuth R, Guerra B. 2012. *Escherichia coli* producing VIM-1 carbapenemase isolated on a pig farm. *J Antimicrob Chemother* 67:1793–1795. <https://doi.org/10.1093/jac/dks108>.
- Fischer J, Rodriguez I, Schmoger S, Friese A, Roesler U, Helmuth R, Guerra B. 2013. *Salmonella enterica* subsp. *enterica* producing VIM-1 carbapenemase isolated from livestock farms. *J Antimicrob Chemother* 68:478–480. <https://doi.org/10.1093/jac/dks393>.
- EFSA Panel on Biological Hazards (BIOHAZ). 2013. Scientific opinion on carbapenem resistance in food animal ecosystems. *EFSA J* 11:3501.
- European Commission. 2013. 2013/652/EU Commission Implementing Decision of 12 November 2013 on the monitoring and reporting of antimicrobial resistance in zoonotic and commensal bacteria. *Off J Eur Union* 2013:L303/26–L303/39.
- Roschanski N, Fischer J, Falgenhauer L, Pietsch M, Guenther S, Kreienbrock L, Chakraborty T, Pfeifer Y, Guerra B, Roesler UH. 2018. Retrospective analysis of bacterial cultures sampled in German chicken-fattening farms during the years 2011–2012 revealed additional VIM-1 carbapenemase-producing *Escherichia coli* and a serologically rough *Salmonella enterica* serovar Infantis. *Front Microbiol* 9:538. <https://doi.org/10.3389/fmicb.2018.00538>.
- Fischer J, San Jose M, Roschanski N, Schmoger S, Baumann B, Irrgang A, Friese A, Roesler U, Helmuth R, Guerra B. 2017. Spread and persistence of VIM-1 carbapenemase-producing Enterobacteriaceae in three German swine farms in 2011 and 2012. *Vet Microbiol* 200:118–123. <https://doi.org/10.1016/j.vetmic.2016.04.026>.
- Borowiak M, Fischer J, Baumann B, Hammerl JA, Szabo I, Malorny B. 2018. Complete genome sequence of a VIM-1-producing *Salmonella enterica* subsp. *enterica* serovar Infantis isolate derived from minced pork meat. *Genome Announc* 6:e00327-18. <https://doi.org/10.1128/genomeA.00327-18>.
- Borowiak M, Szabo I, Baumann B, Junker E, Hammerl JA, Kaesbohrer A, Malorny B, Fischer J. 2017. VIM-1-producing *Salmonella* Infantis isolated from swine and minced pork meat in Germany. *J Antimicrob Chemother* 72:2131–2133. <https://doi.org/10.1093/jac/dkx101>.
- Falgenhauer L, Ghosh H, Guerra B, Yao Y, Fritzenwanker M, Fischer J, Helmuth R, Imirzalioglu C, Chakraborty T. 2017. Comparative genome analysis of IncHI2 VIM-1 carbapenemase-encoding plasmids of *Escherichia coli* and *Salmonella enterica* isolated from a livestock farm in Germany. *Vet Microbiol* 200:114–117. <https://doi.org/10.1016/j.vetmic.2015.09.001>.
- Irrgang A, Fischer J, Grobbel M, Schmoger S, Skladnikiewicz-Ziemer T, Thomas K, Hensel A, Tenhagen B-A, Käsbohrer A. 2017. Recurrent detection of VIM-1-producing *Escherichia coli* clone in German pig production. *J Antimicrob Chemother* 72:944–946. <https://doi.org/10.1093/jac/dkw479>.
- Roschanski N, Friese A, Thieck M, Roesler U. 2016. Follow-up investigation of the first VIM-1-positive pig farm in Germany—how is the situation 4 years after the first detection? *Clin Microbiol Infect* 22:951–953. <https://doi.org/10.1016/j.cmi.2016.08.018>.
- Roschanski N, Guenther S, Vu TTT, Fischer J, Semmler T, Huehn S, Alter T, Roesler U. 2017. VIM-1 carbapenemase-producing *Escherichia coli* isolated from retail seafood, Germany 2016. *Euro Surveill* 22:17-00032. <https://doi.org/10.2807/1560-7917.ES.2017.22.43.17-00032>.
- Fischer J, Borowiak M, Baumann B, Szabo I, Malorny B. 2017. Whole-genome sequencing analysis of multidrug-resistant *Salmonella* Infantis isolates circulating in the German food-production chain, abstr P1080. 27th ECCMID, Vienna, Austria, 22 to 25 April 2017.
- Hawkey J, Edwards DJ, Dimovski K, Hiley L, Billman-Jacobe H, Hogg G, Holt KE. 2013. Evidence of microevolution of *Salmonella* Typhimurium during a series of egg-associated outbreaks linked to a single chicken farm. *BMC Genomics* 14:800. <https://doi.org/10.1186/1471-2164-14-800>.
- Gymoese P, Sorensen G, Litrup E, Olsen JE, Nielsen EM, Torpdahl M. 2017. Investigation of outbreaks of *Salmonella enterica* serovar Typhimurium and its monophasic variants using whole-genome sequencing, Denmark. *Emerg Infect Dis* 23:1631–1639. <https://doi.org/10.3201/eid2310.161248>.
- Cordeiro NF, Chabalgoity JA, Yim L, Vignoli R. 2014. Synthesis of metallo-beta-lactamase VIM-2 is associated with a fitness reduction in *Salmonella enterica* serovar Typhimurium. *Antimicrob Agents Chemother* 58:6528–6535. <https://doi.org/10.1128/AAC.02847-14>.
- Weile J, Rahmig H, Gfroer S, Schroepel K, Knabbe C, Susa M. 2007. First detection of a VIM-1 metallo-beta-lactamase in a carbapenem-resistant *Citrobacter freundii* clinical isolate in an acute hospital in Germany. *Scand J Infect Dis* 39:264–266. <https://doi.org/10.1080/00365540600868388>.
- Pfennigwerth N. 2018. Bericht des Nationalen Referenzzentrums (NRZ) für gramnegative Krankenhauserreger. *Epidemiol Bull* 28:263–267.
- Fernandez J, Guerra B, Rodicio MR. 2018. Resistance to carbapenems in non-typhoidal *Salmonella enterica* serovars from humans, animals and food. *Vet Sci* 5:E40. <https://doi.org/10.3390/vetsci5020040>.
- Guerra B, Fischer J, Helmuth R. 2014. An emerging public health problem: acquired carbapenemase-producing microorganisms are present in food-producing animals, their environment, companion animals and wild birds. *Vet Microbiol* 171:290–297. <https://doi.org/10.1016/j.vetmic.2014.02.001>.
- Zhang WJ, Lu Z, Schwarz S, Zhang RM, Wang XM, Si W, Yu S, Chen L, Liu S. 2013. Complete sequence of the *bla*_(NDM-1)-carrying plasmid pNDM-AB from *Acinetobacter baumannii* of food animal origin. *J Antimicrob Chemother* 68:1681–1682. <https://doi.org/10.1093/jac/dkt066>.
- Al Bayssari C, Dabboussi F, Hamze M, Rolain JM. 2015. Emergence of carbapenemase-producing *Pseudomonas aeruginosa* and *Acinetobacter baumannii* in livestock animals in Lebanon. *J Antimicrob Chemother* 70:950–951. <https://doi.org/10.1093/jac/dku469>.
- Pruthivishree BS, Vinodh Kumar OR, Sinha DK, Malik YPS, Dubal ZB, Desingu PA, Shivakumar M, Krishnaswamy N, Singh BR. 2017. Spatial molecular epidemiology of carbapenem-resistant and New Delhi metallo beta-lactamase (*bla*_{NDM})-producing *Escherichia coli* in the piglets of

- organized farms in India. *J Appl Microbiol* 122:1537–1546. <https://doi.org/10.1111/jam.13455>.
25. Pulss S, Semmler T, Prenger-Berninghoff E, Bauerfeind R, Ewers C. 2017. First report of an *Escherichia coli* strain from swine carrying an OXA-181 carbapenemase and the colistin resistance determinant MCR-1. *Int J Antimicrob Agents* 50:232–236. <https://doi.org/10.1016/j.ijantimicag.2017.03.014>.
 26. Mollenkopf DF, Stull JW, Mathys DA, Bowman AS, Feicht SM, Grooters SV, Daniels JB, Wittum TE. 2017. Carbapenemase-producing Enterobacteriaceae recovered from the environment of a swine farrow-to-finish operation in the United States. *Antimicrob Agents Chemother* 61:e01298-16. <https://doi.org/10.1128/AAC.01298-16>.
 27. Hauser E, Tietze E, Helmuth R, Junker E, Prager R, Schroeter A, Rabsch W, Fruth A, Toboldt A, Malorny B. 2012. Clonal dissemination of *Salmonella enterica* serovar Infantis in Germany. *Foodborne Pathog Dis* 9:352–360. <https://doi.org/10.1089/fpd.2011.1038>.
 28. European Food Safety Authority. 2017. The European Union summary report on trends and sources of zoonoses, zoonotic agents and food-borne outbreaks in 2016. *EFSA J* 15:5077.
 29. Hadziabdic S, Fischer J, Malorny B, Borowiak M, Guerra B, Kaesbohrer A, Gonzalez-Zorn B, Szabo I. 2018. In vivo transfer and microevolution of avian native IncA/C2 blaNDM-1-carrying plasmid pRH-1238 during a broiler chicken infection study. *Antimicrob Agents Chemother* 62:e02128-17. <https://doi.org/10.1128/AAC.02128-17>.
 30. Roschanski N, Friese A, von Salviati-Claudius C, Hering J, Kaesbohrer A, Kreienbrock L, Roesler U. 2017. Prevalence of carbapenemase producing Enterobacteriaceae isolated from German pig-fattening farms during the years 2011–2013. *Vet Microbiol* 200:124–129. <https://doi.org/10.1016/j.vetmic.2015.11.030>.
 31. Grimont PAD, Weill F-X. 2007. Antigenic formulae of the *Salmonella* serovars, 9th ed. WHO Collaborating Centre for Reference and Research on *Salmonella*, Paris, France.
 32. Clinical and Laboratory Standards Institute. 2018. Methods for dilution antimicrobial susceptibility tests for bacteria that grow aerobically, standard M7, 11th ed. Clinical and Laboratory Standards Institute, Wayne, PA.
 33. Clinical and Laboratory Standards Institute. 2018. Performance standards for antimicrobial disk and dilution susceptibility tests for bacteria isolated from animals, standard Vet01-A5, 5th ed. Clinical and Laboratory Standards Institute, Wayne, PA.
 34. Ribot EM, Fair MA, Gautom R, Cameron DN, Hunter SB, Swaminathan B, Barrett TJ. 2006. Standardization of pulsed-field gel electrophoresis protocols for the subtyping of *Escherichia coli* O157:H7, *Salmonella*, and *Shigella* for PulseNet. *Foodborne Pathog Dis* 3:59–67. <https://doi.org/10.1089/fpd.2006.3.59>.
 35. Rodriguez I, Barownick W, Helmuth R, Mendoza MC, Rodicio MR, Schroeter A, Guerra B. 2009. Extended-spectrum beta-lactamases and AmpC beta-lactamases in ceftiofur-resistant *Salmonella enterica* isolates from food and livestock obtained in Germany during 2003–07. *J Antimicrob Chemother* 64:301–309. <https://doi.org/10.1093/jac/dkp195>.
 36. Bolger AM, Lohse M, Usadel B. 2014. Trimmomatic: a flexible trimmer for Illumina sequence data. *Bioinformatics* 30:2114–2120. <https://doi.org/10.1093/bioinformatics/btu170>.
 37. Larsen MV, Cosentino S, Lukjancenko O, Saputra D, Rasmussen S, Hasman H, Sicheritz-Ponten T, Aarestrup FM, Ussery DW, Lund O. 2014. Benchmarking of methods for genomic taxonomy. *J Clin Microbiol* 52:1529–1539. <https://doi.org/10.1128/JCM.02981-13>.
 38. Ashton PM, Nair S, Peters TM, Bale JA, Powell DG, Painset A, Tewolde R, Schaefer U, Jenkins C, Dallman TJ, de Pinna EM, Grant KA, *Salmonella* Whole Genome Sequencing Implementation Group. 2016. Identification of *Salmonella* for public health surveillance using whole genome sequencing. *PeerJ* 4:e1752. <https://doi.org/10.7717/peerj.1752>.
 39. Alikhan NF, Petty NK, Ben Zakour NL, Beatson SA. 2011. BLAST Ring Image Generator (BRIG): simple prokaryote genome comparisons. *BMC Genomics* 12:402. <https://doi.org/10.1186/1471-2164-12-402>.