



Metabolic Syndrome Is Not Associated With Prostate Cancer Recurrence: A Retrospective Analysis of a Chinese Cohort

Xin Xu^{1*}, Qinchen Li^{1†}, Chengdong Chang², Xiao Wang^{1*} and Liping Xie¹

¹ Department of Urology, School of Medicine, The First Affiliated Hospital, Zhejiang University, Hangzhou, China, ² Department of Pathology, School of Medicine, The First Affiliated Hospital, Zhejiang University, Hangzhou, China

OPEN ACCESS

Edited by:

Ronald M. Bukowski,
Cleveland Clinic, United States

Reviewed by:

Benyi Li,
University of Kansas Medical Center,
United States
Shashwat Sharad,
Center for Prostate Disease Research
(CPDR), United States

*Correspondence:

Xin Xu
drxuxin@zju.edu.cn
Xiao Wang
zjuwangxiao@zju.edu.cn

[†]These authors have contributed
equally to this work

Specialty section:

This article was submitted to
Genitourinary Oncology,
a section of the journal
Frontiers in Oncology

Received: 07 September 2019

Accepted: 14 January 2020

Published: 30 January 2020

Citation:

Xu X, Li Q, Chang C, Wang X and
Xie L (2020) Metabolic Syndrome Is
Not Associated With Prostate Cancer
Recurrence: A Retrospective Analysis
of a Chinese Cohort.
Front. Oncol. 10:63.
doi: 10.3389/fonc.2020.00063

Objective: Metabolic syndrome (MetS), a common disease that affects many people around the world, has been hypothesized to be associated with human cancers, including prostate cancer (PCa), but the association has not been consistent. The aim of the current study was to evaluate whether MetS and its components are risk factors for PCa biochemical recurrence (BCR) among a cohort of postoperative patients at our hospital in China.

Materials and Methods: This retrospective study included 214 patients with PCa who received radical prostatectomy. Differences between groups were estimated using the χ^2 test or Student's *t*-test. BCR rates were calculated according to the Kaplan-Meier method with the log-rank test. A Cox regression analysis was conducted for the multivariate analyses to identify significant predictors of BCR.

Results: Of the 214 eligible men, 55 experienced BCR and 24 met the MetS diagnostic criteria. Multivariate Cox model analysis showed that patients with BCR had a higher Gleason score [hazard ratio (HR) 2.51, 95% confidence interval (CI) 1.33–4.76] and positive nerve invasion (HR 3.57, 95% CI 1.85–6.88). MetS was not associated with BCR (HR 0.38, 95% CI 0.13–1.10).

Conclusion: BCR is not associated with MetS but is associated with a higher Gleason score and positive nerve invasion.

Keywords: prostate cancer, metabolic syndrome, radical prostatectomy, biochemical recurrence, cohort

INTRODUCTION

Prostate cancer (PCa) has been rated as the most commonly diagnosed cancer in men in the United States according to a report published in 2019 (1). With the changes in lifestyle in recent years, the incidence rate of PCa in China has increased, and there has been an upward trend in age-standardized mortality rates observed for PCa in men (2). Moreover, adverse lifestyle factors, such as alcohol consumption, smoking, overnutrition, sedentary lifestyle, obesity, western-type diets, and hypertension-inducing diets, could accelerate the onset of metabolic syndrome (MetS) (3).

Metabolic syndrome (MetS), including central obesity, raised blood pressure, elevated fasting glucose and dyslipidemia (low high-density lipoprotein cholesterol and elevated triglycerides), is a cluster of metabolic abnormalities related to insulin resistance (4). MetS and its components have

become more prevailing global public health issues (5), and growing evidence has established an association between MetS and diseases, including cirrhosis (6), non-alcoholic fatty liver disease (3), diabetes mellitus (3), and cardiovascular disease (7). Moreover, emerging evidence indicates that MetS and its components were associated with an increased risk of PCa biochemical recurrence (BCR) (8, 9), which was defined as being present in the event of two consecutive increasing postoperative serum prostate-specific antigen (PSA) values ≥ 0.2 ng/ml among prostate cancer patients who underwent radical prostatectomy (RP). In addition, several studies have shown that MetS or its components were related to adverse clinical and pathological characteristics in individuals with PCa after RP, involving a positive surgical margin (8, 10, 11), extracapsular extension (8), pathological Gleason score (GS) (8, 10), PCa-specific mortality and local recurrence (10) and PCa biochemical recurrence (12, 13). However, different conclusions provided by another study revealed no association between MetS and PCa risk in the overall analyses (14), and PCa detection (15), and PCa biochemical recurrence (10–12). Clearly, inconsistent results regarding MetS and BCR still exist.

Given the unclear association between PCa BCR and MetS and the increasing prevalence of MetS, we hypothesized that MetS or its components might be associated with an increased risk for PCa BCR. Therefore, in the present study, we investigated a range of preoperative MetS components, including body mass index (BMI), blood pressure, fasting glucose, high-density lipoprotein cholesterol (HDL) and triglycerides (TGs), as well as the preoperative serum PSA levels of patients with clinically localized PCa who received RP, particularly with respect to the link between these indicators and BCR after surgery. The aim of the current study was to evaluate whether MetS and its components are risk factors for PCa BCR among a cohort of postoperative patients at our hospital in China to prevent increased prostate cancer mortality associated with MetS.

PATIENTS AND METHODS

Study Subjects

Men with clinically localized PCa undergoing radical prostatectomy at the Department of Urology at the First Affiliated Hospital of Zhejiang University from January 2013 to December 2015 were, respectively, included in this study. Exclusion criteria: patients who received neoadjuvant hormonal therapy; components of MetS were not completed; PSA levels did not reach a nadir ≤ 0.2 ng/mL after surgery; loss to follow-up. A total of 214 patients were finally included in our study. Clinicopathological information, including age, height, weight, history of hypertension and diabetes, lipid profiles, preoperative prostate-specific antigen (PSA) levels, prostatectomy GS, and pathological characteristics, was gathered from medical records and analyzed. BCR was defined as two consecutive rising detectable PSA concentrations of >0.2 ng/mL or the administration of adjuvant therapy during the postoperative follow-up period. Higher GS was defined as $GS \geq 8$. The study protocol was approved by the Institutional Research Review Boards of the First Affiliated Hospital of Zhejiang University.

Due to the retrospective nature of the study, informed consent was waived. All methods were performed in accordance with the relevant guidelines and regulations.

Metabolic Syndrome Definition

MetS was defined according to the criteria recommended by the Chinese Diabetes Society (16), which requires that at least three of four of the following standards are met: (1) overweight and obesity: body mass index (BMI) ≥ 25 kg/m²; (2) hypertension: systolic and diastolic blood pressure ≥ 140 and 90 mmHg, respectively, on three consecutive occasions, or a physician's diagnosis of hypertension; (3) diabetes: fasting glucose ≥ 6.1 mmol/l, or a physician's diagnosis; (4) dyslipidemia (hypertriglyceridemia and/or low high-density lipoprotein (HDL) level): serum triglyceride (TG) level ≥ 1.7 mmol/l and/or HDL-cholesterol level <0.9 mmol/l.

Statistical Analyses

Differences between groups were estimated using the χ^2 test or Student's *t*-test. BCR rates were calculated according to the Kaplan-Meier method with log-rank test. A Cox regression analysis (proportional hazards model) was conducted for the multivariate analyses to identify significant predictors of BCR. All analyses were performed using SPSS16.0 software (IBM, USA) and a two-tailed value of $P < 0.05$ was considered to be statistically significant.

RESULTS

Table 1 shows the main characteristics of patients. A total 214 patients met the inclusion criteria for the study, 55 experienced BCR and 24 met diagnosis criteria of MetS. The mean (SD) of age was 65.9 (6.48) years, the mean (SD) of serum PSA level was 14.1 (9.00) ng/mL, and the BMI (SD) was 23.8 (2.67) m²/kg. The patients with MetS showed no difference in the age and the level of PSA when compared to the Non-MetS group ($P = 0.16$ and $P = 0.67$, respectively) as shown in **Table 2**. Similarly, when compared MetS with Non-MetS group, no significant difference was observed for various clinicopathological PCa features, including prostate capsule invasion, seminal vesicle invasion, nerve invasion, positive surgical margin, lymph node involvement and prostatectomy GS (**Table 2**, all $P > 0.05$).

Table 3 indicates 55 (25.7%) patients underwent BCR after RP and 159 (74.30%) patients was not. Assessment of differences in clinicopathological characteristics with chi-squared tests associated with BCR revealed that some variables were significantly associated with BCR including: prostate capsule invasion, seminal vesicle invasion, nerve invasion and prostatectomy GS ($P < 0.01$, $P = 0.03$, $P < 0.01$, and $P < 0.01$, respectively). Unexpectedly, **Table 4** exhibited that MetS and its components were rarely significant associated with BCR when compared BCR with BCR-free group (all $P > 0.05$).

Given the above results, we take Kaplan-Meier curves to further demonstrated that BCR was associated with MetS ($P = 0.147$), hypertension ($P = 0.785$), BMI ($P = 0.525$), diabetes ($P = 0.964$), low (HDL) ($P = 0.581$) and hypertriglyceridemia level ($P = 0.510$) (**Figure 1**). To better select which patients with BCR had worse survival outcomes, all patients were further

TABLE 1 | Patient characteristics (*n* = 214).

Variables	Values
Age, years	65.92 ± 6.48
BMI	23.83 ± 2.67
Total PSA, ng/ml	14.07 ± 9.00
Smoke status	
Yes	106 (49.5%)
No	108 (50.5%)
Diabetes	
Yes	28 (13.1%)
No	186 (86.9%)
Hypertension	
Yes	108 (50.5%)
No	106 (49.5%)
Prostate capsule invasion	
Yes	76 (35.5%)
No	138 (64.5%)
Seminal vesicle invasion	
Yes	25 (11.7%)
No	189 (88.3%)
Nerve invasion	
Yes	79 (36.9%)
No	135 (63.1%)
Surgical margin	
Yes	56 (26.2%)
No	158 (73.8%)
Nodal status	
Yes	4 (1.9%)
No	210 (98.1%)
Gleason score	
6	35 (16.4%)
7	137 (64.0%)
8	20 (9.3%)
9	22 (10.3%)

BMI, body mass index; PSA, prostate-specific antigen.

stratified according to clinicopathological PCa features, including prostate capsule invasion, seminal vesicle invasion, nerve invasion, positive surgical margin, lymph node involvement and prostatectomy GS, the results are shown in **Figure 2**. Patients with BCR had increased GS ($P < 0.001$), positive prostate capsule invasion ($P = 0.001$), positive nerve invasion ($P < 0.001$) and positive seminal vesicle invasion ($P = 0.012$). However, in the multivariate Cox model analysis (**Table 5**), only the presence of nerve invasion (HR 3.57, 95% CI 1.85–6.88) and advanced pathologic GS (HR 2.51, 95% CI 1.33–4.76) were identified as significant BCR predictors.

DISCUSSION

Prostate cancer is the most common carcinoma in men with nearly 174,650 new cases annually in US (1). Radical prostatectomy (RP) or radiation therapy (RT) is the most prevailing primary treatments for patients of PCa, which

TABLE 2 | Association between MetS and clinicopathological factors.

Variables	Non-MetS (<i>n</i> = 190) (88.79%)	MetS (<i>n</i> = 24) (11.21%)	<i>P</i> -value
Age, years	65.70 ± 6.53	67.67 ± 5.90	0.16
Total PSA, ng/ml	14.17 ± 9.12	13.33 ± 8.07	0.67
Smoke status			
Yes	96 (50.5%)	10 (41.7%)	0.41
No	94 (49.5%)	14 (58.3%)	
Prostate capsule invasion			
Yes	70 (36.8%)	6 (25.0%)	0.25
No	120 (63.2%)	18 (75.0%)	
Seminal vesicle invasion			
Yes	23 (12.1%)	2 (8.3%)	0.59
No	167 (87.9%)	22 (91.7%)	
Nerve invasion			
Yes	71 (37.4%)	8 (33.3%)	0.70
No	119 (62.6%)	16 (66.7%)	
Positive surgical margin			
Yes	50 (26.3%)	6 (25.0%)	0.89
No	140 (73.7%)	18 (75.0%)	
Lymph node involvement			
Yes	4 (2.1%)	0 (0.0%)	0.47
No	186 (97.9%)	24 (100%)	
Prostatectomy GS			
≥8	36 (18.9%)	6 (25.0%)	0.48
<8	154 (81.1%)	18 (75.0%)	

MetS, Metabolic syndrome; PSA, prostate-specific antigen.

generally provided excellent cancer control. Unfortunately, PCa recurrence following primary therapy generally happened, with the incidence of BCR around 35% at 10 years following RP (17). Conventionally, high-risk patients of PCa had an increased risk of BCR, including following features, rapidly rising PSA, Gleason score 8–10, and so on. Many studies recently focused on the relationships between BCR and MetS, and had reported inconsistent results. Therefore, we performed a comprehensive analysis for patients with PCa about the associations between BCR and MetS in the current study. The results in this study showed there was no significant correlation between BCR and MetS as well as its components among the cohort of postoperative patients of our hospital in China. BCR was only associated with increased GS and positive nerve invasion in multivariate analysis.

In our present report, patients of PCa with MetS didn't have a higher risk of BCR, and pathologic characteristics also didn't differ between patients according to whether they had MetS. But previous studies have linked MetS to an increased risk of higher GS, lymph node involvement and pT3–4 diseases (18) or some MetS components increase risk PCa recurrence (13). According to a meta-analysis, showing a consistent conclusion, it indicated a higher likelihood of advanced, high-grade or BCR of PCa among those with MetS (14). In contrast to above findings, Macleod et al. found that PCa recurrence was not associated with MetS [multivariable: HR 0.96, 95% CI (0.61–1.50); propensity adjusted

TABLE 3 | Association between BCR and clinicopathological factors.

Variables	BCR-free group (n = 159) (74.30%)	BCR group (n = 55) (25.70%)	P-value
Age, years	65.95 ± 6.77	65.84 ± 5.60	0.91
Total PSA, ng/ml			
Smoke status			
Yes	80 (50.3%)	26 (47.3%)	0.70
No	79 (49.7%)	29 (52.7%)	
Prostate capsule invasion			
Yes	44 (27.7%)	32 (58.2%)	<0.01
No	115 (72.3%)	23 (41.8%)	
Seminal vesicle invasion			
Yes	14 (8.8%)	11 (20.0%)	0.03
No	145 (91.2%)	44 (80.0%)	
Nerve invasion			
Yes	41 (25.8%)	38 (69.1%)	<0.01
No	118 (74.2%)	17 (30.9%)	
Positive surgical margin			
Yes	40 (25.2%)	16 (29.1%)	0.57
No	119 (74.8%)	39 (70.9%)	
Lymph node involvement			
Yes	2 (1.3%)	2 (3.6%)	0.26
No	157 (98.7%)	53 (96.4%)	
Prostatectomy GS			
≥8	19 (11.9%)	23 (41.8%)	<0.01
<8	140 (88.1%)	32 (58.2%)	

BCR, biochemical recurrence; PSA, prostate-specific antigen; GS, Gleason score. Bold value indicates statistically significant.

HR 1.04, 95% CI (0.67–1.62)] (12), which showing no difference in our results [HR 0.38, 95% CI (0.13–1.10), *P* = 0.074].

Taking a further analysis, our results showed any components related with MetS didn't increase the risk of BCR, which was in accordance with existing research. For instance, Dickerman et al. reported that obesity (BMI) and weight change were not associated with an increased risk of BCR, weight gain might early influence prostatic carcinogenesis and might play a part in the development of cancers more likely to progress (19). A previous meta-analysis revealed that diabetes mellitus was obviously negatively related with prostate cancer risk in population-based studies (RR = 0.72, 95% CI: 0.64–0.81) (20). And existing evidence exhibited patients with hypertriglyceridemia had a better BCR-free survival rate than those not, meaning that preoperative hypertriglyceridemia was related with a lower risk of BCR in patients with clinically localized PCa (21). Although Macleod et al. did not confirm the association between BCR and hypertension, the further investigation of the role for hypertension was deserved (12). Second hypertension is related to age. Although several studies have showed that hypertension is associated with increased prostate cancer incidence. Finally, smoking is also a factor that possibly has an important role. Several studies have indicated that smoking is potentially associated with more aggressive prostate cancer and 50% of the patients in our study are smokers.

The natural history of BCR after RP could be long but variable. Better risk assessment models were merited to recognize patients

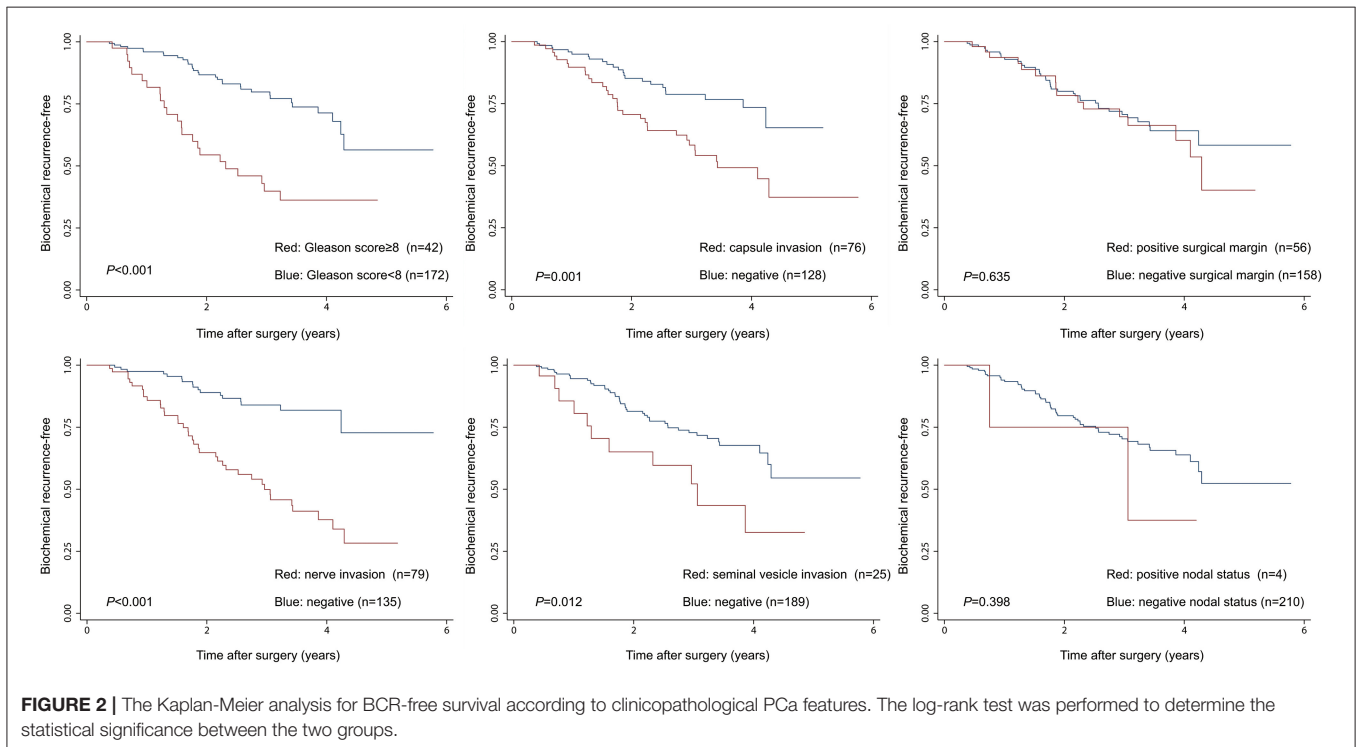
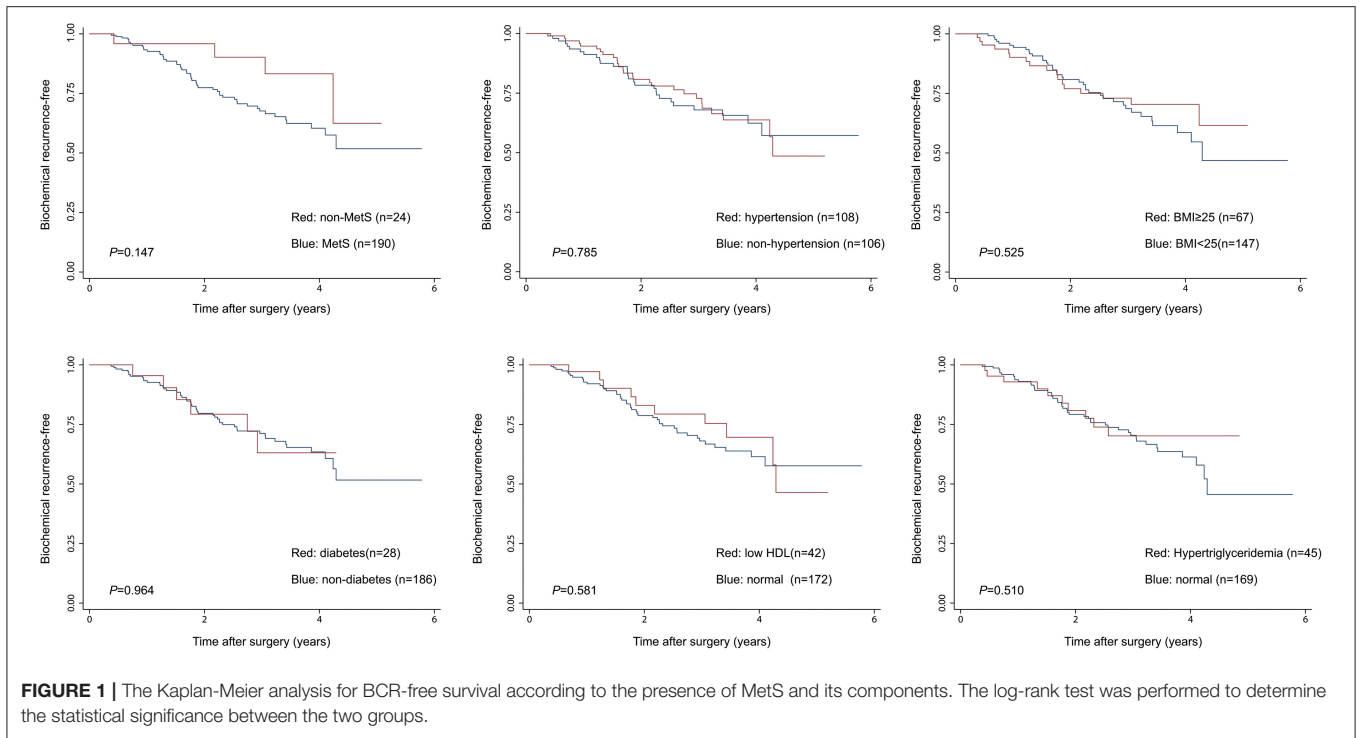
TABLE 4 | Association between BCR and MetS.

Variables	BCR-free group (n = 159)	BCR group (n = 55)	P-value
MetS			
Yes	20 (12.6%)	4 (7.3%)	0.28
No	139 (87.4%)	51 (92.7%)	
Hypertension			
Yes	81 (50.9%)	27 (49.1%)	0.81
No	78 (49.1%)	28 (50.9%)	
Diabetes			
Yes	22 (13.8%)	6 (10.9%)	0.58
No	137 (86.2%)	49 (89.1%)	
BMI			
<25	109 (68.6%)	38 (69.1%)	0.94
≥25	50 (31.4%)	17 (30.9%)	
Hypertriglyceridemia			
Yes	35 (22.0%)	10 (18.2%)	0.55
No	124 (78.0%)	45 (81.8%)	
Low HDL-cholesterol			
Yes	32 (20.1%)	10 (18.2%)	0.75
No	127 (79.9%)	45 (81.8%)	

BCR, biochemical recurrence; MetS, Metabolic syndrome; HDL, high-density lipoprotein; BMI, body mass index; HDL, high-density lipoprotein cholesterol.

who were at high risk for prostate cancer-specific death early and may benefit from aggressive salvage treatment and to realize patients who were at greater odds for prostate cancer-specific survival and could be safely observed. Existing data in our study signed that BCR was associated with adverse clinicopathological features, including increased GS and positive nerve invasion. It meant patients with adverse clinicopathological features was associated with a more aggressive tumor phenotype, could be regarded as the poor prognosis indicators for BCR in patients with PCa and might need adjuvant radiation therapy or androgen deprivation treatment.

Of note, the present findings have following limitations that merit mentioning. First and foremost, retrospective design is the primary limitation, which only allowed us to evaluate the temporal link between BCR and MetS, thereby causal inference is restricted, and the data we analyzed retrospectively, carries a potential selection bias for this study. Second, comorbidities of enrolled patients may not be precisely reported in the electronic medical record. Take an example, we were unable to make clear patients who didn't report the history of diabetes or hypertension to their medical providers. In this respect, we depended on self-reported information, leading to the possibility of misclassification bias. Also, some important information, such as diet, and physical activity, family history, and drug usage, including statins anti-diabetes drugs, was not collected. These latent confounders could limit the statistical power of the study. Third, the evaluation of obesity was carried out only by BMI in our study, rather than waist circumstance to define overweight, which might cause misclassification. Fourth, this study was a single-center study only in China, and the number of subjects was a small volume, which may not apply to all



centers. Fifth, information pertaining to the duration of MetS and its components, which may theoretically influence BCR, was also deficient. Finally, the data of collected were fully based on Chinese men and thereby the results would not be generalized to other ethnic populations.

CONCLUSION

In conclusion, the presence of BCR was associated with an increased risk of higher GS and positive nerve invasion. MetS and its components were not associated with BCR

TABLE 5 | Multivariate Cox model analysis of BCR.

Variables	HR (95% CI)	P-value
MetS (yes vs. no)	0.38 (0.13–1.10)	0.074
Age (continuous)	1.02 (0.98–1.07)	0.322
Total PSA (continuous)	1.01 (0.99–1.04)	0.344
Smoking status (yes vs. no)	0.82 (0.47–1.42)	0.481
Prostate capsule invasion (yes vs. no)	1.58 (0.86–2.90)	0.143
Seminal vesicle invasion (yes vs. no)	1.09 (0.50–2.40)	0.826
Nerve invasion (yes vs. no)	3.57 (1.85–6.88)	<0.001
Positive surgical margin (yes vs. no)	0.53 (0.28–1.02)	0.057
Positive nodal status (yes vs. no)	1.63 (0.34–7.74)	0.542
Gleason score (≥ 8 vs. < 8)	2.51 (1.33–4.76)	0.005

BCR, biochemical recurrence; HR, hazard ratio; CI, confidence interval; MetS, Metabolic syndrome; PSA, prostate-specific antigen. Bold value indicates statistically significant.

among the cohort of postoperative patients of our hospital in China. Prospective study using large multicentric patient groups with a long follow-up are warranted to more accurately verify the possible implication of MetS prevention on PCa recurrence.

DATA AVAILABILITY STATEMENT

The datasets generated for this study are available on request to the corresponding author.

REFERENCES

- Siegel RL, Miller KD, Jemal A. Cancer statistics, 2019. *CA Cancer J Clin.* (2019) 69:7–34. doi: 10.3322/caac.21551
- Chen W, Zheng R, Baade PD, Zhang S, Zeng H, Bray F, et al. Cancer statistics in China, 2015. *CA Cancer J Clin.* (2016) 66:115–32. doi: 10.3322/caac.21338
- Perez-Martinez P, Mikhailidis DP, Athyros VG, Bullo M, Couture P, Covas MI, et al. Lifestyle recommendations for the prevention and management of metabolic syndrome: an international panel recommendation. *Nutr Rev.* (2017) 75:307–26. doi: 10.1093/nutrit/nux014
- Alberti KG, Eckel RH, Grundy SM, Zimmet PZ, Cleeman JI, Donato KA, et al. Harmonizing the metabolic syndrome: a joint interim statement of the International diabetes federation task force on epidemiology and prevention; National Heart, Lung, and Blood Institute; American Heart Association; World Heart Federation; International Atherosclerosis Society; and International Association for the Study of Obesity. *Circulation.* (2009) 120:1640–5. doi: 10.1161/CIRCULATIONAHA.109.192644
- Bitzur R, Brenner R, Maor E, Antebi M, Ziv-Baran T, Segev S, et al. Metabolic syndrome, obesity, and the risk of cancer development. *Eur J Intern Med.* (2016) 34:89–93. doi: 10.1016/j.ejim.2016.08.019
- Nderitu P, Bosco C, Garmo H, Holmberg L, Malmstrom H, Hammar N, et al. The association between individual metabolic syndrome components, primary liver cancer and cirrhosis: A study in the Swedish AMORIS cohort. *Int J Cancer.* (2017) 141:1148–60. doi: 10.1002/ijc.30818
- Lu J, Wang L, Li M, Xu Y, Jiang Y, Wang W, et al. Metabolic syndrome among adults in China: the 2010 China noncommunicable disease surveillance. *J Clin Endocrinol Metab.* (2017) 102:507–15. doi: 10.1210/jc.2016-2477
- Ohno Y, Ohori M, Nakashima J, Okubo H, Satake N, Hashimoto T, et al. Association between preoperative serum total cholesterol level and biochemical recurrence in prostate cancer patients who underwent radical prostatectomy. *Mol Clin Oncol.* (2016) 4:1073–7. doi: 10.3892/mco.2016.831
- Shiota M, Yokomizo A, Takeuchi A, Imada K, Kiyoshima K, Inokuchi J, et al. The feature of metabolic syndrome is a risk factor for biochemical recurrence after radical prostatectomy. *J Surg Oncol.* (2014) 110:476–81. doi: 10.1002/jso.23677
- Morlacco A, Dal Moro F, Rangel LJ, Carlson RE, Schulte PJ, Jeffrey KR. Impact of metabolic syndrome on oncologic outcomes at radical prostatectomy. *Urol Oncol.* (2018) 36:528 e1–e6. doi: 10.1016/j.urolonc.2018.10.003
- Zheng X, Qiu S, Liao X, Han X, Jin K, Yang L, et al. The accumulation of metabolic syndrome components is associated with higher risk of positive surgical margin among patients with localized prostate cancer after radical prostatectomy. *Onco Targets Ther.* (2019) 12:1613–20. doi: 10.2147/OTT.S195148
- Macleod LC, Chery LJ, Hu EY, Zeliadt SB, Holt SK, Lin DW, et al. Metabolic syndrome, dyslipidemia and prostate cancer recurrence after primary surgery or radiation in a veterans cohort. *Prostate Cancer Prostatic Dis.* (2015) 18:190–5. doi: 10.1038/pcan.2015.12
- Asmar R, Beebe-Dimmer JL, Korgavkar K, Keele GR, Cooney KA. Hypertension, obesity and prostate cancer biochemical recurrence after radical prostatectomy. *Prostate Cancer Prostatic Dis.* (2013) 16:62–6. doi: 10.1038/pcan.2012.32
- Xiang YZ, Xiong H, Cui ZL, Jiang SB, Xia QH, Zhao Y, et al. The association between metabolic syndrome and the risk of prostate cancer, high-grade prostate cancer, advanced prostate cancer, prostate cancer-specific mortality and biochemical recurrence. *J Exp Clin Cancer Res.* (2013) 32:9. doi: 10.1186/1756-9966-32-9
- Morote J, Roperio J, Planas J, Bastaros JM, Delgado G, Placer J, et al. Metabolic syndrome increases the risk of aggressive prostate cancer detection. *BJU Int.* (2013) 111:1031–6. doi: 10.1111/j.1464-410X.2012.11406.x
- Association CD. The Chinese medical association recommendation about metabolic syndrome. *Chin J Diabetes Mellitus.* (2004) 12:156–61.

ETHICS STATEMENT

The studies involving human participants were reviewed and approved by First Affiliated Hospital of Zhejiang University. Written informed consent for participation was not required for this study in accordance with the national legislation and the institutional requirements.

AUTHOR CONTRIBUTIONS

XX and XW contributed to the conception or design of the work. QL, CC, and LX contributed to the acquisition, analysis, or interpretation of data for the work. XX drafted the manuscript. XW and QL critically revised the manuscript. All authors gave final approval and agree to be accountable for all aspects of work ensuring integrity and accuracy.

FUNDING

This study was supported by grants from the National Natural Science Foundation of China (81702500 and 81802564), and the National Key Research and Development Program of China (2017YFC0908002 and 2017YFC0908003).

ACKNOWLEDGMENTS

We sincerely thank Mr. Jian Xu for his help in data retrieval.

17. Freedland SJ, Humphreys EB, Mangold LA, Eisenberger M, Dorey FJ, Walsh PC, et al. Risk of prostate cancer-specific mortality following biochemical recurrence after radical prostatectomy. *JAMA*. (2005) 294:433–9. doi: 10.1001/jama.294.4.433
18. Zhang GM, Zhu Y, Dong DH, Han CT, Gu CY, Gu WJ, et al. The association between metabolic syndrome and advanced prostate cancer in Chinese patients receiving radical prostatectomy. *Asian J Androl*. (2015) 17:839–44. doi: 10.4103/1008-682X.148138
19. Dickerman BA, Ahearn TU, Giovannucci E, Stampfer MJ, Nguyen PL, Mucci LA, et al. Weight change, obesity and risk of prostate cancer progression among men with clinically localized prostate cancer. *Int J Cancer*. (2017) 141:933–44. doi: 10.1002/ijc.30803
20. Zhang F, Yang Y, Skrip L, Hu D, Wang Y, Wong C, et al. Diabetes mellitus and risk of prostate cancer: an updated meta-analysis based on 12 case-control and 25 cohort studies. *Acta Diabetol*. (2012) 49 Suppl 1:S235–46. doi: 10.1007/s00592-012-0439-5
21. Kang M, Jeong CW, Ku JH, Kwak C, Kim HH. Hypertriglyceridemia is a potential preoperative predictor for biochemical recurrence after radical prostatectomy. *PLoS ONE*. (2015) 10:e0122438. doi: 10.1371/journal.pone.0122438

Conflict of Interest: The authors declare that the research was conducted in the absence of any commercial or financial relationships that could be construed as a potential conflict of interest.

Copyright © 2020 Xu, Li, Chang, Wang and Xie. This is an open-access article distributed under the terms of the Creative Commons Attribution License (CC BY). The use, distribution or reproduction in other forums is permitted, provided the original author(s) and the copyright owner(s) are credited and that the original publication in this journal is cited, in accordance with accepted academic practice. No use, distribution or reproduction is permitted which does not comply with these terms.