

## EDGE ARTICLE

Cite this: *Chem. Sci.*, 2022, 13, 8963

All publication charges for this article have been paid for by the Royal Society of Chemistry

Received 10th April 2022

Accepted 27th May 2022

DOI: 10.1039/d2sc02044k

rsc.li/chemical-science

## Stereoselective peptide catalysis in complex environments – from river water to cell lysates†

Tobias Schnitzer,  Jonas W. Rackl  and Helma Wennemers \*

Many stereoselective peptide catalysts have been established. They consist, like nature's catalysts, of amino acids but have significantly lower molecular weights than enzymes. Whereas enzymes operate with exquisite chemoselectivity in complex biological environments, peptide catalysts are used in pure organic solvents and at higher concentrations. Can a peptide catalyst exhibit chemoselectivity reminiscent of enzymes? Here, we investigated the properties of tripeptide catalysts in complex mixtures in hydrophobic and aqueous solvents. We challenged the catalysts with biomolecules bearing functional groups that could interfere by coordination or reaction with the peptide, the substrates, or intermediates. H-DPro- $\alpha$ MePro-Glu-NHC<sub>12</sub>H<sub>15</sub> emerged through tailoring of the *trans/cis* ratio of the tertiary amide as a conformationally well-defined tripeptide that catalyzes C–C bond formations with high reactivity and stereoselectivity – regardless of the solvent and compound composition. The chemoselectivity of the tripeptide is so high that it even catalyzes reactions in cell lysates. The findings provoke the question of the potential role of peptide catalysis in nature and during the evolution of enzymes.

## Introduction

During the past two decades, peptides have been recognized as potent catalysts for different reactions.<sup>1,2</sup> Several of these peptide catalysts feature exquisite levels of stereoselectivity and reactivity. Since they consist, like nature's catalysts, of amino acids but are significantly smaller, peptide catalysts can be viewed as “mini-enzymes”. Yet, whereas enzymes catalyze reactions in aqueous media, most peptidic catalysts operate in organic solvents.<sup>†1–13</sup> A further marked difference is the environment in which catalysis takes place. Enzymes work in highly complex cellular environments – reaction media that require exceptional chemoselectivity – while peptide catalysts are used in well-defined environments consisting only of substrates and products in pure solvents. Moreover, enzymes operate at significantly lower concentrations than peptide catalysts. We became intrigued by the question of whether a peptide catalyst can have a chemoselectivity reminiscent of enzymes. Can stereoselective peptide catalysis occur in water in the presence of compounds abundant in nature, in complex compound mixtures, and possibly even in cell lysates?

Herein, we show that the peptide H-DPro- $\alpha$ MePro-Glu-NHC<sub>12</sub>H<sub>15</sub> is so chemoselective that it catalyzes C–C bond formation reactions between aldehydes and nitroolefins with exquisite stereoselectivity in complex mixtures, including cell

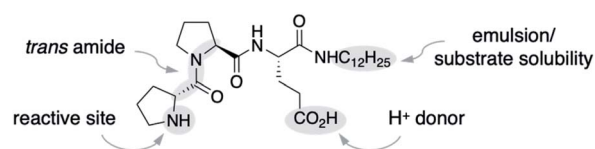
lysates. Key to the performance of this peptide is the  $\alpha$ MePro residue that ensures a high *trans/cis* ratio of the tertiary amide bond regardless of the solvent and compound composition.

## Results &amp; discussion

## Peptide catalysis in water in the presence of biomolecules

We used the alkylated tripeptide H-DPro-Pro-Glu-NHC<sub>12</sub>H<sub>15</sub> **1** as a starting point for our studies (Fig. 1). This peptide is a stereoselective catalyst for the conjugate addition reaction of aldehydes to nitroolefins in water and organic solvents.<sup>13,14</sup> The catalytic reaction proceeds *via* the formation of an enamine intermediate between the peptide and the aldehyde followed by a C–C bond formation with the nitroolefin.<sup>15–18</sup> Essential for the catalytic efficiency of **1** is a high *trans/cis* ratio of the DPro-Pro amide bond<sup>19</sup> and the CO<sub>2</sub>H group of glutamate as an intramolecular proton donor.<sup>14</sup> In water, the alkyl chain facilitates the formation of an emulsion and thus the solubility of the otherwise water-insoluble substrates.<sup>13</sup>

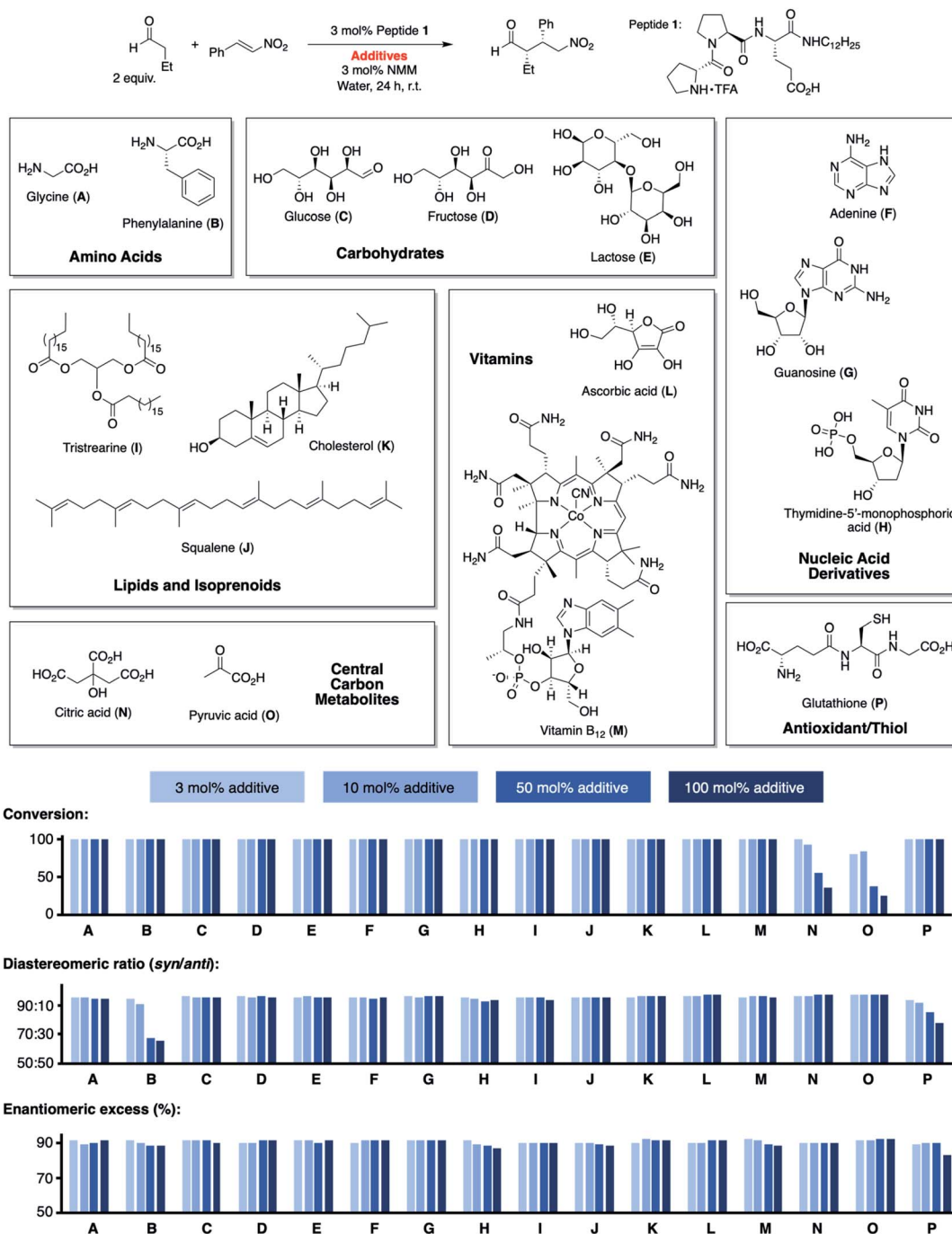
We began by exploring the effect of compounds common in biological systems on the reactivity and stereoselectivity of peptide **1** (Scheme 1). We thus added amino acids (A, B), mono-

Fig. 1 Peptide catalyst **1**.

Laboratory of Organic Chemistry, ETH Zürich, Vladimir-Prelog-Weg 3, 8093 Zürich, Switzerland. E-mail: Helma.Wennemers@org.chem.ethz.ch

† Electronic supplementary information (ESI) available. CCDC 2152664. For ESI and crystallographic data in CIF or other electronic format see <https://doi.org/10.1039/d2sc02044k>





Scheme 1 Conjugate addition reaction of butanal to nitrostyrene catalyzed by **1** in the presence of biomolecules A–P.

and disaccharides (C–E), nucleic acid derivatives (F–H), lipids and terpenes (I–K), vitamins (L, M), compounds of the central carbon metabolism (N, O), and glutathione (P) to the peptide-catalyzed conjugate addition reaction between butanal and (*E*)-nitrostyrene. In the presence of an equimolar amount of additives A–P with respect to **1** (3 mol%), the catalytic reaction proceeded with comparable diastereo- and enantioselectivity (d.r. 96 : 4, 91% ee) as in their absence (d.r. 98 : 2, 91% ee). Even the reactivity of peptide **1** was not affected by these additives (quantitative conversion of starting material to the product after

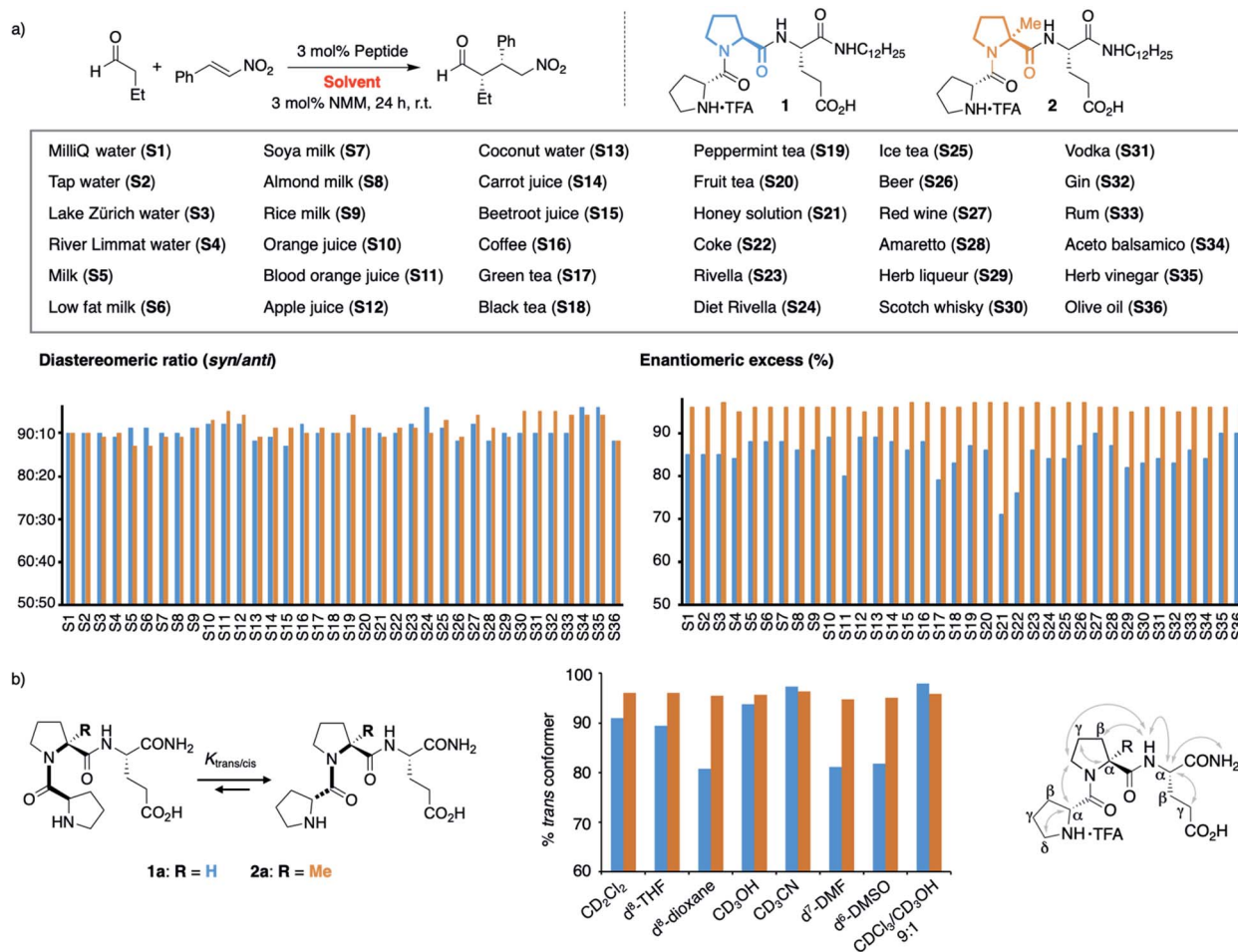
24 h). The only exception was pyruvic acid (O) which caused a drop to ~80% conversion. These results are noteworthy since the additives include carboxylic acid and phosphoric acid groups (A, B, H, M–O), metal complexes (M), heteroaromatic groups (B, F–H, M), alcohols (C–E, K–N), and thiols (P). These acidic and basic, H-bond donor and acceptor sites, and the metal complex could interfere by coordination to peptide **1** or the intermediates with the catalytic cycle. Even additives containing carbonyl (C–E), thiol (P), and primary amino groups (A, B, F, G) that could react with the secondary amine catalyst or the

aldehyde and nitroolefin substrates do not affect the reaction. The observed deactivation by pyruvic acid is likely due to its acidity ( $pK_a = 2.5$ ), resulting in protonation of the amine, the reactive site of **1**. Next, we increased the amount of each additive stepwise from an equimolar amount with respect to the peptide catalyst (3 mol%, 13.2 mM) to 10 mol% (44 mM), 50 mol% (220 mM), and 100 mol% (440 mM; Scheme 1). The latter concentrations are comparable to the overall metabolite concentration inside cells ( $\sim 200$  mM).<sup>20</sup> At the highest concentration (100 mol%, 440 mM), the stoichiometry of the additive and the nitroolefin substrate is 1 : 1. Even at this concentration, most additives did not affect the catalytic performance of peptide **1** and full conversion; diastereoselectivities between 94 : 6 and 99 : 1, and enantioselectivities between 87% ee and 92% ee were observed. Only citric (**N**) and pyruvic acid (**O**) reduced the reactivity ( $<50\%$  conversion), and phenylalanine (**B**) and glutathione (**P**) reduced the diastereoselectivity (d.r.  $\leq 80 : 20$ ). These findings highlight the high chemoselectivity of peptide **1** for the conjugate addition reaction, which proceeds efficiently in water even in the presence of compounds that are abundant in nature and contain functional moieties that could interfere with the catalytic cycle.

### Peptide catalysis in complex mixtures

We next extended our study to peptide catalysis in multi-component mixtures. Specifically, we performed the catalytic reaction in water from different sources (**S1–S4**), milk and milk substitutes (**S5–S9**), fruit and vegetable juices (**S10–S15**), coffee and tea (**S16–S20**), honey solution (**S21**), soft drinks (**S22–S25**), alcoholics (**S26–S33**), vinegar (**S34–S35**) and olive oil (**S36**; Scheme 2a). These commercial, readily available “solvents” differ significantly from each other in polarity, pH, viscosity, and their ingredients and are, thus, a good platform to probe the effect of different environments on peptide catalysis.

Control experiments showed that the aldehyde and nitroolefin do not react with each other in any of these mixtures in the absence of peptide **1**. In the presence of **1**, the conjugate addition product formed quantitatively in all solvents but with different stereoselectivity. The diastereomeric ratio *syn/anti* ranged from 93 : 7 in vodka to 98 : 2 in green tea, the enantioselectivity from 71% ee in honey solution to 90% ee in olive oil (Scheme 2a, blue bars). Hence, the complex environments affected the enantioselectivity of H-D-Pro-Pro-Glu-NHC<sub>12</sub>H<sub>25</sub> **1**. Whereas these results show that peptide catalysis is possible in complex mixtures, we sought an analog of **1** that would allow for



Scheme 2 (a) Catalysis in complex mixtures **S1–S36** with peptides **1** and **2**. (b) *Trans/cis* ratio of **1a** and **2a** in different solvents.

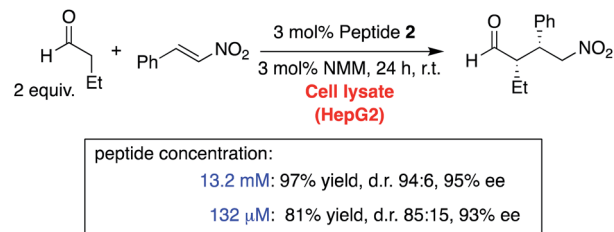
consistently high product formation and stereoselectivity regardless of the environment.

### Conformational tailoring of peptide catalyst

We recently found that the stereoselectivity of the parent, non-alkylated peptide H-DPro-Pro-Glu-NH<sub>2</sub> **1a** correlates with the *trans/cis* conformer ratio of its DPro-Pro amide bond (Scheme 2b).<sup>19</sup> Hence, we suspected that the reduced stereoselectivity in some “solvents” arose from lower *trans/cis* ratios in these complex environments. Therefore, we sought an analog of **1** with a high *trans/cis* ratio regardless of the environment. Previously developed catalyst analogs bearing pipercolic acid or  $\gamma$ -substituted Pro derivatives in place of Pro in the middle position have a higher *trans/cis* ratio and thus higher stereoselectivity than **1a** in apolar solvents.<sup>19,21</sup> In polar solvents (*e.g.*, H<sub>2</sub>O, MeOH, DMSO, DMF), these analogs have, however, lower *trans/cis* ratios and poorer stereoselectivities than **1a**.<sup>19</sup> Thus, we needed an analog of **1** with a residue in the middle position that “locks” the peptide in the *trans* conformation. We envisioned that  $\alpha$ -L-methylproline ( $\alpha$ MePro), a proline derivative known to favor the *trans* conformer of Xaa-Pro bonds,<sup>22–25</sup> could fill this need. Based on the conformational analysis of peptide **1a**,<sup>16</sup> we reasoned that the additional methyl group at C <sup>$\alpha$</sup>  should not affect the conformation of the peptide catalyst. Indeed, a crystal structure of the TFA-salt of H-DPro- $\alpha$ MePro-Glu-NH<sub>2</sub> (**2a**) was almost identical to that of the parent peptide **1a** (see ESI† p. S10). Both peptides adopt a  $\beta$ -turn conformation with a H-bond between the C=O of DPro and the C-terminal amide. The similarity of **1a** and **2a** was further confirmed by NMR spectroscopy, as indicated by the coupling constants and nuclear Overhauser effects (Scheme 2b, right, and ESI† p. S9).

Since the *trans/cis* ratio of **2a** is difficult to monitor in complex mixtures, we initially used polar and apolar, protic and aprotic organic solvents to probe the effect of the  $\alpha$ MePro residue on the conformation and the catalytic properties of the peptide catalyst (Scheme 2b, middle). Peptide **2a** has in all of these solvents a *trans/cis* ratio of  $\geq 95 : 1$  whereas the *trans/cis* ratio of peptide **1a** varies with the solvent (80–98% of *trans* conformer). As a result, the stereoselectivity of **2a** is higher than that of **1a** in all solvents (see ESI† p. S11).

Building on these data, we prepared the alkylated analog H-DPro- $\alpha$ MePro-Glu-NHC<sub>12</sub>H<sub>25</sub> **2** and evaluated its catalytic properties in the different “solvents” **S1–S36** (Scheme 2a). Peptide **2** provided the  $\gamma$ -nitroaldehyde with diastereoselectivities of 87 : 13–95 : 5 and enantioselectivities of 96% or 97% ee in each of these environments (Scheme 2a, orange bars). The data show that the “locked” *trans* amide bond of **2** enables peptide catalysis in any environment with uniformly high enantioselectivity. These results are noteworthy since the tested environments have significantly different polarities (*e.g.*, olive oil and milk *versus* water and alcoholics), viscosities (*e.g.*, honey *versus* apple juice), pH (*e.g.*, coke and vinegar *versus* tap water), and contain numerous compounds, including carbohydrates, lipids, peptides, and proteins, that could interfere or inhibit peptide catalysis. The data thus evidence the high chemoselectivity of the peptide catalyst for the conjugate addition reaction.



Scheme 3 Peptide catalysis in a cell lysate.

### Peptide catalysis in cell lysate

Encouraged by these data, we challenged peptide **2** to catalyze reactions in cell lysates (Scheme 3). We used lysates with a total protein concentration of 5.3 g mL<sup>-1</sup> from human hepatoma cells (HepG2), an immortal cell line that secretes a variety of major plasma proteins. Under standard conditions (880 mM aldehyde, 440 mM nitroolefin, 13.2 mM **2**), complete conversion of the nitroolefin was observed, and the conjugate addition product was isolated in 97% yield with a stereoselectivity of d.r. 94 : 6 and 95% ee. Thus, peptide **2** withstands even the multi-component mixture of a cell lysate with numerous compounds that could either react or coordinate to the catalyst, the substrates, or the reaction intermediates.

Enzyme concentrations range between micro- and millimolar inside cells.<sup>20</sup> Therefore, we reduced the reaction concentration by a factor of 10 and 100. Even at the lowest concentration, peptide **2** (132  $\mu$ M) provided the product with an 81% yield and only slightly lower stereoselectivity (d.r. 85 : 15, 93% ee). These data show that the peptide is so reactive and chemoselective that stereoselective catalysis takes place in a highly competitive environment at a concentration typical for enzymes.

## Conclusion

The study put forth the first examples of stereoselective peptide catalysts that are sufficiently chemoselective to operate in complex mixtures, including cell lysates. The conformationally tailored peptide catalyzes C–C bond formation in both, hydrophobic and aqueous environments with remarkable stereoselectivity, even at concentrations typical for enzyme catalysis. Biomolecules that could interfere through coordination or covalent reaction with the peptide, the catalyst intermediates, or the substrates did not affect the peptide catalysis.

Of note, the key to the exquisite performance of the peptide catalyst in any environment was the tuning of the *trans/cis* amide bond ratio through substituents at proline, a concept that nature uses to regulate protein folding and stability as well as enzyme activity.<sup>26–30</sup>

The results illustrate that a short-chain peptide can be a potent catalyst in any environment, including those that are hallmarks of naturally evolved enzymes. The findings show the utility of peptide catalysts for organic synthesis and provoke the question of the potential role of small catalytic peptides in the evolution of enzymes. Proteomic analyses have revealed that the

cells of microbes as well as those of humans contain a large number of peptides.<sup>31</sup> The function of many of these peptides is unknown. The presented data spark the question of whether some of these peptides catalyze biochemical reactions, orchestrating an underworld of clandestine organocatalysis that yet needs to be discovered?

## Data availability

Experimental procedures and analytical data are available in the ESI.†

## Author contributions

H. W. and T. S. conceived the project. T. S. and J. W. R. performed the experiments. All authors contributed to the data analysis and writing of the paper.

## Conflicts of interest

There are no conflicts to declare.

## Acknowledgements

We thank the Fonds der Chemischen Industrie (Germany) for a Kekulé Fellowship for T. S., the Swiss National Science Foundation (grant 200020\_188729), and the European Union's Horizon 2020 research and innovation programme (Grant No. 862081) for financial support.

## Notes and references

† For examples of peptide catalysis in water, or in mixtures of an organic solvent and water, see ref. 3–13.

- 1 A. J. Metrano, A. J. Chinn, C. R. Shugrue, E. A. Stone, B. Kim and S. J. Miller, *Chem. Rev.*, 2020, **120**, 11479.
- 2 H. Wennemers, *Chem. Commun.*, 2011, **47**, 12036.
- 3 S. Julia, J. Masana and J. C. Vega, *Angew. Chem., Int. Ed.*, 1980, **19**, 929.
- 4 S. Julia, J. Guixer, J. Masana, J. Rocas, S. Colonna, R. Annuziata and H. Molinari, *J. Chem. Soc., Perkin Trans. 1*, 1982, **22**, 1317.
- 5 A. Weyer, D. Díaz, A. Nierth, N. E. Schlörer and A. Berkessel, *ChemCatChem*, 2012, **4**, 337.
- 6 M. Lei, L. Shi, G. Li, S. Chen, W. Fang, Z. Ge, T. Cheng and R. Li, *Tetrahedron*, 2007, **63**, 7892.
- 7 D. K. Romney and S. J. Miller, *Org. Lett.*, 2012, **14**, 1138.
- 8 G. Maayan, M. D. Ward and K. Kirshenbaum, *Proc. Natl. Acad. Sci.*, 2009, **106**, 13679.
- 9 C. Mayer, M. M. Müller, S. H. Gellman and D. Hilvert, *Angew. Chem., Int. Ed.*, 2014, **53**, 6978.
- 10 K. Akagawa, H. Akabane, S. Sakamoto and K. Kudo, *Org. Lett.*, 2008, **10**, 2035.
- 11 B. Sarkhel, A. Chatterjee and D. Das, *J. Am. Chem. Soc.*, 2020, **142**, 4098.
- 12 C. S. Foden, S. Islam, C. Fernández-García, L. Maugeri, T. D. Sheppard and M. W. Powner, *Science*, 2020, **370**, 865.
- 13 J. Duschmalé, S. Kohrt and H. Wennemers, *Chem. Commun.*, 2014, **50**, 8109.
- 14 J. Duschmalé, J. Wiest, M. Wiesner and H. Wennemers, *Chem. Sci.*, 2013, **4**, 1312.
- 15 M. Wiesner, G. Upert, G. Angelici and H. Wennemers, *J. Am. Chem. Soc.*, 2010, **132**, 6.
- 16 F. Bächle, J. Duschmalé, C. Ebner, A. Pfaltz and H. Wennemers, *Angew. Chem., Int. Ed.*, 2013, **52**, 12619.
- 17 C. Rigling, J. K. Kisunzu, J. Duschmalé, D. Häussinger, M. Wiesner, M. O. Ebert and H. Wennemers, *J. Am. Chem. Soc.*, 2018, **140**, 10829.
- 18 T. Schnitzer and H. Wennemers, *J. Org. Chem.*, 2020, **85**, 7633.
- 19 T. Schnitzer and H. Wennemers, *J. Am. Chem. Soc.*, 2017, **139**, 15356.
- 20 B. D. Bennett, E. H. Kimball, M. Gao, R. Osterhout, S. J. Van Dien and J. D. Rabinowitz, *Nat. Chem. Biol.*, 2009, **5**, 593.
- 21 T. Schnitzer and H. Wennemers, *Synthesis*, 2018, **50**, 4377.
- 22 N. G. Delaney and V. Madison, *J. Am. Chem. Soc.*, 1982, **104**, 6635.
- 23 J. H. Welsh, O. Zerbe, W. von Philipsborn and J. A. Robinson, *FEBS Lett.*, 1992, **297**, 216.
- 24 V. Y. Torbeev, E. Fumi, M. O. Ebert, W. B. Schweizer and D. Hilvert, *Helv. Chim. Acta*, 2012, **95**, 2411.
- 25 V. Torbeev, M. O. Ebert, J. Dolenc and D. Hilvert, *J. Am. Chem. Soc.*, 2015, **137**, 2524.
- 26 M. D. Shoulders and R. T. Raines, *Annu. Rev. Biochem.*, 2009, **78**, 929.
- 27 U. Arnold, M. P. Hinderaker, J. Köditz, R. Golbik, R. Ulbrich-Hofmann and R. T. Raines, *J. Am. Chem. Soc.*, 2003, **125**, 7500.
- 28 S. C. R. Lummis, D. L. Beene, L. W. Lee, H. A. Lester, R. W. Broadhurst and D. A. Dougherty, *Nature*, 2005, **438**, 248.
- 29 B. Holzberger and A. Marx, *J. Am. Chem. Soc.*, 2010, **132**, 15708.
- 30 S. A. Lieblich, K. Y. Fang, J. K. B. Cahn, J. Rawson, J. LeBon, H. T. Ku and D. A. Tirrell, *J. Am. Chem. Soc.*, 2017, **139**, 8384.
- 31 A. Rathore, T. F. Martinez, Q. Chu and A. Saghatelian, *Expert Rev. Proteomics*, 2018, **15**, 963.