

# Molecular Typing of Lung Adenocarcinoma on Cytological Samples Using a Multigene Next Generation Sequencing Panel

Aldo Scarpa<sup>1,2,3</sup>, Katarzyna Sikora<sup>1,3</sup>, Matteo Fassan<sup>1,2\*</sup>, Anna Maria Rachiglio<sup>3</sup>, Rocco Cappellesso<sup>4</sup>, Davide Antonello<sup>2</sup>, Eliana Amato<sup>1</sup>, Andrea Mafficini<sup>1</sup>, Matilde Lambiase<sup>3</sup>, Claudia Esposito<sup>3</sup>, Emilio Bria<sup>5</sup>, Francesca Simonato<sup>4</sup>, Maria Scardoni<sup>2</sup>, Giona Turri<sup>2</sup>, Marco Chilosi<sup>2</sup>, Giampaolo Tortora<sup>5</sup>, Ambrogio Fassina<sup>4</sup>, Nicola Normanno<sup>6</sup>

**1** ARC-NET Research Centre, University of Verona, Verona, Italy, **2** Department of Pathology and Diagnostics, University of Verona, Verona, Italy, **3** Pharmacogenomic Laboratory, INT-Fondazione Pascale, Centro di Ricerche Oncologiche di Mercogliano, Mercogliano, Italy, **4** Department of Medicine, University of Padova, Padova, Italy, **5** Department of Medicine, Oncology Unit, University of Verona, Verona, Italy, **6** Cell Biology and Biotherapy Unit, INT-Fondazione Pascale, Napoli, Italy

## Abstract

Identification of driver mutations in lung adenocarcinoma has led to development of targeted agents that are already approved for clinical use or are in clinical trials. Therefore, the number of biomarkers that will be needed to assess is expected to rapidly increase. This calls for the implementation of methods probing the mutational status of multiple genes for inoperable cases, for which limited cytological or bioptic material is available. Cytology specimens from 38 lung adenocarcinomas were subjected to the simultaneous assessment of 504 mutational hotspots of 22 lung cancer-associated genes using 10 nanograms of DNA and Ion Torrent PGM next-generation sequencing. Thirty-six cases were successfully sequenced (95%). In 24/36 cases (67%) at least one mutated gene was observed, including *EGFR*, *KRAS*, *PIK3CA*, *BRAF*, *TP53*, *PTEN*, *MET*, *SMAD4*, *FGFR3*, *STK11*, *MAP2K1*. *EGFR* and *KRAS* mutations, respectively found in 6/36 (16%) and 10/36 (28%) cases, were mutually exclusive. Nine samples (25%) showed concurrent alterations in different genes. The next-generation sequencing test used is superior to current standard methodologies, as it interrogates multiple genes and requires limited amounts of DNA. Its applicability to routine cytology samples might allow a significant increase in the fraction of lung cancer patients eligible for personalized therapy.

**Citation:** Scarpa A, Sikora K, Fassan M, Rachiglio AM, Cappellesso R, et al. (2013) Molecular Typing of Lung Adenocarcinoma on Cytological Samples Using a Multigene Next Generation Sequencing Panel. PLoS ONE 8(11): e80478. doi:10.1371/journal.pone.0080478

**Editor:** Giuseppe Viglietto, UNIVERSITY MAGNA GRAECIA, Italy

**Received:** August 13, 2013; **Accepted:** October 14, 2013; **Published:** November 13, 2013

**Copyright:** © 2013 Scarpa et al. This is an open-access article distributed under the terms of the Creative Commons Attribution License, which permits unrestricted use, distribution, and reproduction in any medium, provided the original author and source are credited.

**Funding:** This work was supported by Italian Cancer Genome Project (FIRB RBAP10AHJB) and Associazione Italiana Ricerca Cancro (AIRC 5 per mille grant n. 12182). The funders had no role in study design, data collection and analysis, decision to publish, or preparation of the manuscript.

**Competing Interests:** The authors have declared that no competing interests exist.

\* E-mail: matteo.fassan@gmail.com

These authors contributed equally to this work.

## Introduction

Lung cancer is the leading cause of cancer-related death worldwide [1,2,3]. It is classified as small cell or non-small cell lung cancer (NSCLC), the latter comprising three of the most common subtypes: adenocarcinoma, squamous cell carcinoma, and neuroendocrine tumors [4].

The majority of NSCLC are diagnosed at an advanced stage with inoperable disease [5]. Therefore, in more than 85% NSCLC minimally invasive procedures must be employed to obtain diagnostic material, which is consequently represented by either small biopsies or cytology samples [5,6]. This significantly affects the morphological and molecular characterization required for targeted therapies, whose efficacy is limited to patients with specific genetic alterations [5].

For lung adenocarcinomas, epidermal growth factor receptor (EGFR) tyrosine kinase inhibitors have been approved for treatment of tumors carrying *EGFR* gene mutations, and crizotinib for tumors with anaplastic lymphoma kinase (*ALK*) gene

rearrangements [7,8,9,10]. Clinical trials are ongoing in subgroups of patients harboring specific molecular alterations such as *BRAF*, *PIK3CA* or *KRAS* activating mutations [11,12,13]. Therefore, the number of predictive biomarkers to be assessed for novel targeted drugs entering into clinical practice is expected to rapidly increase [2,10,14].

Sanger sequencing is currently the most widely applied technique in the characterization of *EGFR* gene status in clinical practice [15]. Real-time PCR-based methods have been shown to efficiently detect *EGFR* mutations in samples containing 1% mutated cancer cells [16]. However, there is no sufficient information on the predictive ability of these techniques, since no clear correlation has been established up to now between the quantity of mutant alleles in the cancer and the extent and duration of response to therapy [16,17]. More importantly, most methods have been developed and validated to assess single gene alterations. Massive parallel sequencing, also known as next generation sequencing (NGS) or deep sequencing, has been

recently introduced and is the most sensitive approach to index multiple genes starting from a limited amount of DNA [18].

The Ion AmpliSeq Colon and Lung Cancer Panel (Life-technologies, Carlsbad, CA, USA) multigene next generation sequencing (NGS) allows assessment in a single analysis of hotspot mutations in 22 genes related to lung and colon tumorigenesis. The panel has been validated through a collaborative effort of 8 European institutions (<http://tools.invitrogen.com/content/sfs/brochures/AmpliSeq-Colon-Lung-Cancer-Panel-Flyer.pdf>).

With the present study, the performance of the Ion AmpliSeq Colon and Lung Cancer Panel was investigated in a series of lung adenocarcinoma cytological samples to define its diagnostic relevance.

## Materials and Methods

### Ethic statement

Written informed consent was obtained from all patients involved in the study, which was approved in the final form by the Ethics Committee of the Azienda Ospedaliera e Università degli Studi di Padova (N. 0002537 in January 16th, 2013). All the samples were received anonymously and processed at the Molecular Pathology Unit of the Department of Pathology and Diagnostics at the University of Verona.

### Samples

A series of 38 lung adenocarcinoma trans-thoracic fine needle aspiration (FNA) cytology specimens consecutively collected in 2012 at the Surgical Pathology and Cytopathology Unit of Padua University and the Pharmacogenomic Laboratory of the INT-Fondazione Pascale in Napoli, were studied (**Table 1**). In two cases a matched tumor biopsy was also available. The original routine slides were re-assessed by three pathologists (AS, MF and AF) according to current WHO criteria [4].

The series included 21 cytological smears and 17 fine needle aspirate (FNA) washings:

- Routine smear cytological slides fixed with Cytofix® (Bio-Fix 05-x200®, Bio-Optica, Milano, Italy) and stained with Papanicolaou or Diff-Quick. Tumor cells were scraped from one original smear, by manually microdissection at the microscope in order to obtain at least 100 tumor cells. A

mean number of  $1,050 \pm 1,480$  tumor cells per slide were retrieved (range 100–5,000).

- Cells obtained by needle washing of FNA fixed in FineFix® (Milestone Medical Technologies Inc; Kalamazoo, MI). Half sample was processed for cell-block preparation for routine diagnosis [19], the other half was stored at  $-80^{\circ}\text{C}$  and used for the analysis. The quantity of cancer cells present in each needle-washing sample was at least 1,000, as inferred from the histological analysis of the corresponding cell-block.

### DNA extraction

- Cells scraped from the original cytology slides: coverslips were removed by immersion in xylene for 72 hours and the slides were rinsed in 95% ethanol three times. Cells on the slides were scraped in 1.5 ml tubes by using sterile razors. DNA was isolated using the QIAmp DNA Mini kit (Qiagen, Milano, Italy).
- Cells recovered from washing of fine-needles: samples were centrifuged at 12,000 g for 10 min to discard FineFix® and washed in PBS. DNA was isolated from the cell pellets using the QIAmp DNA Mini kit (Qiagen).
- Formalin-fixed paraffin-embedded tumor biopsies: four 10  $\mu\text{m}$  paraffin sections were manually microdissected to ensure that each tumor sample contained at least 70% neoplastic cells. DNA was isolated using the QIAmp DNA FFPE tissue kit (Qiagen).

DNA was quantified and its quality assessed using NanoDrop® (Invitrogen Life Technologies; Milan, Italy) and Qubit® (Invitrogen Life Technologies) platforms according to the manufacturers' instructions.

### Deep Sequencing of Multiplex PCR Amplicons

Deep sequencing were performed using the Ion Torrent platform (Life Technologies), according to the manufacturer's specifications. Briefly, 10 ng of purified genomic DNA were used for library construction with the Ion AmpliSeq Colon and Lung Cancer Panel v1 (Life Technologies) that targets 504 mutational hotspot regions of the following 22 cancer-associated genes, in alphabetical order: *AKT1*, *ALK*, *BRAF*, *CTNNA1*, *DDR2*, *EGFR*, *ERBB2*, *ERBB4*, *FBXW7*, *FGFR1*, *FGFR2*, *FGFR3*, *KRAS*, *MAP2K1*, *MET*, *NOTCH1*, *NRAS*, *PIK3CA*, *PTEN*, *SMAD4*, *STK11*, *TP53*.

Emulsion PCR was performed either manually or with the OneTouch DL system (Life Technologies). The quality of the obtained library was evaluated by the Agilent® 2100 Bioanalyzer on-chip electrophoresis (Agilent Technologies; Santa Clara, CA). Sequencing was run on the Ion Torrent Personal Genome Machine™ (PGM, Life Technologies) loaded with a 316 chip as per manufacturer's protocol. Data analysis, including alignment to the hg19 human reference genome and variant calling, was done using the Torrent Suite Software v.3.2 (Life Technologies). Filtered variants were annotated using both the Ion Reporter software v1.2 (Life Technologies) and the SnpEff software v.3.0 [20] (alignments visually verified with the Integrative Genomics Viewer; IGV v.2.1, Broad Institute [21]).

DNA from normal human lymphocytes and from the carcinoma cell line AVC1 [22] were retrieved from the ARC-NET biobank at Verona University and respectively used as negative and positive control for assessment of sensitivity.

**Table 1.** Clinico-pathological features of the considered series.

Characteristic		#
Gender	Male	24 (63.2%)
	Female	14 (36.8%)
Age	-	69±9 (median 68; range 48–85)
	G1	7 (18.4%)
Grading	G2	27 (71.1%)
	G3	4 (10.5%)
	Stage IIIA	7 (18.4%)
Staging	Stage IIIB	4 (10.5%)
	Stage IV	11 (28.9%)
	missing	16 (42.1%)
Sources	Cytological smears	21 (55.3%)
	FNA washings	17 (44.7%)

doi:10.1371/journal.pone.0080478.t001

## DNA Sanger Sequencing

To validate the mutations detected by deep sequencing, *EGFR* (exons 18, 19, 20 and 21) and *KRAS* (Exon 2) specific PCR fragments were analyzed by conventional Sanger sequencing [23]. PCR products were purified using Agencourt AMPure XP magnetic beads (Beckman Coulter) and labelled with Big Dye Terminator v3.1 (Applied Biosystems, Monza, Italy). Agencourt CleanSEQ magnetic beads (Beckman Coulter) were used for post-labeling DNA fragment purification, and sequence analysis was performed on an Applied Biosystems 3130xl Genetic Analyser.

## High resolution melting analysis

DNA was amplified for human *EGFR* (exons 19 and 21) and *KRAS* (exon 2) genes via real-time PCR, as previously described [24], in the presence of a proprietary saturating DNA dye contained in the LightCycler 480 High Resolution Melting Master (Roche Diagnostics, Milano, Italy) on the LightCycler 480 platform. A melting curve was produced using high data acquisition rates, and data were analyzed with the LightCycler 480 Gene Scanning Software Module for deletion and mutation identification.

## Results

### Patient Characteristics

The male/female ratio was 24/14 and mean age was 69±9 years (median = 68; range = 48–85). Tumor grading ranged from well ( $n = 7$ ) to moderately ( $n = 27$ ) or poorly differentiated ( $n = 4$ ). In 22 cases a clinical TNM was available, 7 were Stage IIIA, 4 Stage IIIB and 11 Stage IV.

### Deep sequencing of multiplex PCR products is sensitive in mutation assessment

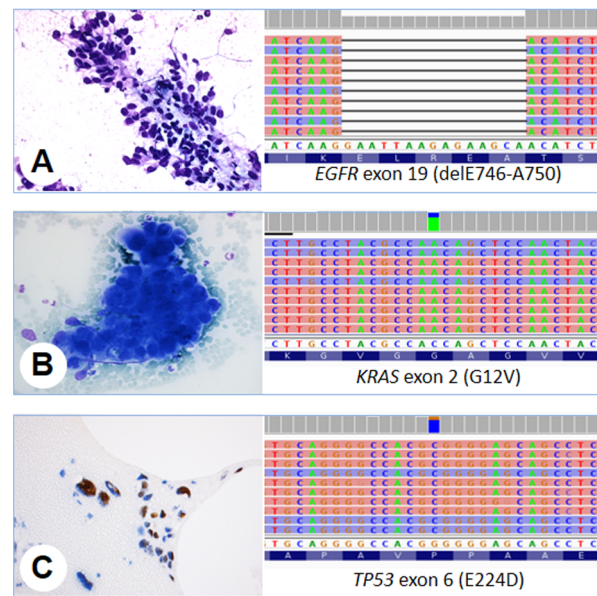
The sensitivity of our experimental setup was tested by progressively diluting DNA from AVC1 cancer cells with DNA from normal human lymphocytes, to obtain samples with decreasing relative tumor DNA content: 50%, 25%, 20%, 15%, 10%, 7.5%, 5%, 2.5%, 1%, and 0%. Ten ng of each dilution point were subjected to Ion AmpliSeq Colon and Lung Cancer Panel analysis v1 (Life Technologies).

A known *KRAS* mutation of the AVC1 cell line [22] was used to assess the assay sensitivity; a novel *CTNNB1* S45F mutation was also found and served to further confirm the assay sensitivity at a second genomic location. The two mutations were identified in all samples containing tumor DNA, and were absent in the sample containing only non-tumor DNA from lymphocytes (data not shown).

### Prevalence of driver genes mutations in lung adenocarcinoma cytology specimens

Ten nanograms of DNA were processed according to the manufacturers' protocol. In 36/38 (95%) samples, an adequate library for subsequent sequencing was obtained. No library amplification was observed in two scraped slides-derived samples.

In 24/36 (67%) samples at least one mutation was observed among the 22 lung cancer-related genes (**Table 2, Figure 1**). *EGFR* and *KRAS* mutations were 6/36 (16%) and 10/36 (28%), respectively. Seven mutations were identified in the *TP53* gene (18%), three in *PIK3CA* (8%), two in *BRAF* (5%), one each in *SMAD4* (3%), *STK11* (3%), and *MAP2K1* (3%). Germline variants in *MET* (T1010I) were observed in two cases and in *FGFR3* (F384L) in one case. Two cases (5%) harbored an A to T



**Figure 1. Cytological preparations from transthoracic fine needle aspiration of lung nodules and mutations identified using next generation sequencing.** **A)** Case #34, a cluster of tumor cells with hyperchromatic nuclei and a high N/C ratio (Papanicolaou stain, original magnification  $\times 20$ ); **B)** Case #29, a solid aggregate of tumor cells with dark nuclei, evident nucleoli and scarce, clear cytoplasm (Diff Quick, original magnification  $\times 20$ ); **C)** Case #18, section of paraffin-embedded cell block showing p53 immunostaining of cancer cells, where the nuclear accumulation of the mutated protein is evident (original magnification  $\times 20$ ). On the right of each sample is the representation of the reads aligned to the reference genome as provided by the Integrative Genomics Viewer (IGV v.2.1, Broad Institute) software [21].

doi:10.1371/journal.pone.0080478.g001

nucleotide substitution in *STK11* gene at the intronic position chr19:g.1221210.

All *EGFR* and *KRAS* mutations were confirmed at Sanger sequencing or high resolution melting analysis. *EGFR*, *KRAS* and *PIK3CA* mutations were mutually exclusive.

Nine cancers (25%) were found to have multiple driver gene alterations (**Table 2**). In these cases, significant differences were observed in the proportion of alleles affected for distinct genes, supporting the presence of intra-tumor molecular heterogeneity. For example, case #23 had 73.2% of alleles with an *EGFR* exon 19 deletion coexisting with a 16.3% of *TP53* E285K and a 4.1% of *MAP2K1* Y130C. No significant association between type and number of mutations and clinico-pathological data was observed.

### Technology reproducibility

In two FNA-washing cases (#1 and #18), two different cell sample aliquots were available. To test the Ion Torrent technology intra-sample reproducibility, 10 ng of DNA obtained from each aliquot were deep sequenced with the Ion AmpliSeq Colon and Lung Cancer Panel. In both cases the mutations identified in the first aliquot were confirmed in the second one with comparable mutation frequencies (**Table 3**).

In two cases (#8 and #21) a matched tumor biopsy, collected after cytological examination, was available and processed for deep sequencing with the Ion AmpliSeq Colon and Lung Cancer Panel. Case #8 showed an *EGFR* exon 21 L858R mutation in

**Table 2.** Mutations found in 24 lung adenocarcinoma cytology specimens sequenced for 22 cancer-related genes using the Ion AmpliSeq Colon and Lung Cancer Panel v1.

Sample	Type	# cells	Gene mutations														
			EGFR	KRAS	PIK3CA	BRAF	TP53	PTEN	MET	SMAD4	FGFR3	STK11	MAP2K1				
#8	F	>100	L858R (62.9%)	-	-	-	-	-	-	-	-	-	-	-	-	-	
#18	F	>100	delK745-A750 (64.8%)	-	-	-	-	E224D (70.8%)	-	-	-	-	-	-	-	-	
#23	S	400	delL747-P753insS (73.2%)	-	-	-	-	E285K (16.3%)	-	-	-	-	-	-	-	Y130C (4.1%)	
#30	S	1,000	L858R (17.3%)	-	-	-	G469R (2.5%)	-	-	-	-	-	-	-	-	-	
#31	S	300	delE746-A750 (27.5%)	-	-	-	-	-	-	-	-	-	-	-	-	-	
#34	S	1,000	delE746-A750 (74%)	-	-	-	-	-	-	-	-	-	-	-	-	-	
#3	F	>100	-	G12A (40.7%)	-	-	-	-	-	Q224/stop (6.4%)	-	-	E70/stop (21.9%)	-	-	-	
#4	F	>100	-	G12V (22.6%)	-	-	-	-	-	-	-	-	-	-	-	-	
#9	F	>100	-	G12V (36.5%)	-	-	-	-	Q171stop (26.1%)	T1010I (40.8%)	-	-	-	chr19:g.1221210A>T (46.3%)	-	-	
#11	F	>100	-	G12C (8.2%)	-	-	-	-	-	-	-	-	-	-	-	-	
#14	F	>100	-	G13C (31.5%)	-	-	-	-	-	-	-	-	-	-	-	-	
#22	F	>100	-	G13C (48.4%)	-	-	-	-	-	-	-	-	-	-	-	-	
#28	F	>100	-	G12D (29.6%)	-	-	-	-	-	-	-	-	-	-	-	-	
#29	S	500	-	G12V (74.9%)	-	-	-	-	-	-	-	-	-	-	-	-	
#32	S	750	-	G12C (43.8%)	-	-	-	Q165/stop (71.2%)	-	-	-	-	-	-	-	-	
#35	S	250	-	G12D (30.6%)	-	-	-	R273L (12.8%)	-	-	-	-	-	-	-	-	
#38	S	5,000	-	G12V (52.7%)	-	-	-	-	-	-	-	-	-	-	-	-	
#1	F	>100	-	-	M1043V (6.5%)	-	-	G105C (5.1%)	-	-	-	-	F384L (55.2%)	-	-	-	
#7	F	>100	-	-	H1047R (6.7%)	-	-	-	-	-	-	-	-	-	-	-	
#26	S	150	-	-	D1029Y (6.0%)	-	-	D594E (83.0%)	-	-	-	-	-	-	-	-	
#13	F	>100	-	-	-	-	-	Y220C (41.0%)	-	-	-	-	-	-	-	-	
#17	S	250	-	-	-	-	-	S241Y (17.0%)	-	-	-	-	-	-	-	-	
#21	F	>100	-	-	-	-	-	-	-	T1010I (40.3%)	-	-	-	-	-	-	
#10	S	1,000	-	-	-	-	-	-	-	-	-	-	-	chr19:g.1221210A>T (24.5%)	-	-	
<b>Total</b>			<b>6/36</b>	<b>10/36</b>	<b>3/36</b>	<b>2/36</b>	<b>5/3</b>	<b>7/36</b>	<b>1/36</b>	<b>2/36</b>	<b>1/36</b>	<b>1/36</b>	<b>2.6</b>	<b>7.9</b>	<b>2.6</b>	<b>1/36</b>	<b>2.6</b>
<b>%</b>			<b>15.8</b>	<b>27.8</b>	<b>7.9</b>	<b>5.3</b>	<b>18.4</b>	<b>18.4</b>	<b>2.6</b>	<b>5.3</b>	<b>2.6</b>	<b>2.6</b>	<b>7.9</b>	<b>2.6</b>	<b>2.6</b>	<b>2.6</b>	<b>2.6</b>

**Note:** F = fine needle aspirate washing; S = smear cytology.  
doi:10.1371/journal.pone.0080478.t002



**Table 3.** Inter-sample reproducibility as assessed in two different sample aliquots.

Sample	Gene	1 <sup>st</sup> aliquot	2 <sup>nd</sup> aliquot
#1	<i>PIK3CA</i>	M1043V (6.5%)	M1043V (9.0%)
	<i>TP53</i>	G105C (5.1%)	G105C (8.9%)
	<i>FGFR3</i>	F384L (55.2%)	F384L (55.1%)
#18	<i>EGFR</i>	delK745-A750 (64.8%)	delK745-A750 (62.2%)
	<i>TP53</i>	E224D (70.8%)	E224D (66.0%)

A total of 10 ng of DNA obtained from each aliquot were processed and sequenced.

doi:10.1371/journal.pone.0080478.t003

both samples which was also confirmed at Sanger sequencing (data not shown). In case #21, the germline variant observed in *MET* (T1010I) was confirmed in both cytological and bioptic samples, while an additional *EGFR* exon 21 L858R mutation was observed only in the biopsy sample (5.5% of analyzed codons), suggesting that the cytological sample did not contain the cancer cells harboring this mutation due to sampling variability. This mutation was confirmed at high resolution melting analysis, but not at Sanger sequencing (data not shown).

## Discussion

Subgroups of lung adenocarcinomas are characterized by specific driver molecular alterations that also represent potential therapeutic targets. Mutations in the tyrosine kinase domain of the *EGFR* gene are driver alterations and predictive biomarkers of response to treatment with specific inhibitors that are already in clinical practice [13,25]. Several other driver molecular alterations have been identified in lung adenocarcinoma, including somatic mutations of *KRAS*, *BRAF*, *STK11*, *DDR2* and members of the *FGFR* family, as well as *ALK* rearrangements [10,26,27,28,29,30,31]. Clinical trials are ongoing in lung cancers carrying *PIK3CA*, *BRAF* or *KRAS* mutations [32,33,34,35,36]. Therefore, a comprehensive molecular characterization of lung tumors is needed for patients to benefit from novel therapeutics in either clinical practice or trials.

In addition, since some driver mutations are mutually exclusive, detection of specific molecular alterations might also predict resistance to specific drugs, as suggested for *KRAS* mutated cancers treated with *EGFR* tyrosine kinase inhibitors [32,33,34,35,36]. However, increasing evidence suggest that different molecular alteration may coexist in the same tumor and this might lead to acquired resistance to targeted agents. Therefore, assessment of molecular heterogeneity within the same cancer might be important in predicting the extent and duration of the response to treatment.

In order to improve the development of personalized medicine in lung adenocarcinoma, a multigene diagnostic approach, starting from a limited amount of DNA, has become mandatory in routine practice for the selection of patients most likely to benefit from targeted therapies [10,14,37,38]. However, the limited diagnostic material available in most NSCLC cases is incompatible with a comprehensive molecular characterization by conventional techniques [5,39].

In the present study, we show that targeted NGS using the Ion Torrent technology provides information about multiple genes

starting from a very limited amount of DNA. In fact, in spite of a low amount of DNA input necessary for the analysis (*i.e.*, 10 ng), Ion AmpliSeq Colon and Lung Cancer Panel can simultaneously interrogate 504 hotspot mutations in 22 lung cancer-associated oncogenes and tumor suppressor genes.

The prevalence and type of mutations detected in our series of cytology samples are comparable to those reported by The National Cancer Institute Lung Cancer Mutation Consortium in 1,000 lung adenocarcinomas [40], which were: *KRAS* 25%, *EGFR* 23%, *BRAF* 3%, *PIK3CA* 3%, *MET* amplifications 2%, *ERBB2* 1%, *MAP2K1* 0.4%, and *NRAS* 0.2% [40]. *ALK* rearrangements, which are not detected by our assay, were found by FISH analysis in 6% of cases [40].

NGS analyzing the exome, *i.e.* the portion of genome codifying for proteins, or the entire genome has already been demonstrated to provide comprehensive molecular characterization of NSCLC [41,42,43], however this approach is not clinically applicable as of today. NGS technology has also recently shown to be high sensitive in *EGFR* single gene testing in cytology samples obtained from bronchoalveolar lavage and pleural fluid of lung adenocarcinoma patients [44]. Moreover, specific multiplex PCR assays targeting fusion genes (*i.e.* *ALK* and *ROS1*) are under development in the framework of the Onconetwork Consortium.

Ion AmpliSeq Colon and Lung Cancer Panel sensitivity resulted higher than that of routine molecular determinations, enabling the detection of sequence variants down to 1% allele frequency, which corresponds to 2% cancer cells in a sample. This is important in the assessment of clonal heterogeneity, *i.e.*, the existence and quantification of multiple clones in the tumor mass [45]. This is imperative in the therapeutic management and is not achievable by conventional sequencing, which requires a sample with at least 10% tumor cells for accurate detection of mutations. In some cases, the presence of a major driver mutation coexisting with other variants displaying lower allele frequencies, as in case #23 showing *EGFR* mutation in 73% of alleles and at lower frequency in *TP53* (16%) and *MAP2K1* (4%) sustains the hypothesis of tumor molecular heterogeneity and further underlines the demand of a NGS approach to characterize the samples. In addition, case #26 may represent a good example of a patient that may be candidate to a target therapy with a *BRAF* inhibitor instead of conventional therapy as the neoplasm shows a dominant *BRAF* mutation in 83% of alleles.

The application of the Ion AmpliSeq Colon and Lung Cancer Panel in routine pathology molecular diagnostics needs validation in larger series of cases. However, its performances in detecting a wide range of genetic alterations with an extremely high sensitivity and specificity can help to assess tumor-specific therapeutic susceptibility and individual prognosis. The upcoming challenge lies in the reliable identification of an ultimate NSCLC-specific multigene panel to significantly improve the care of lung cancer patients.

## Acknowledgments

We thank Dr. Samantha Bersani for her invaluable technical assistance.

## Author Contributions

Conceived and designed the experiments: AS KS MF G. Tortora AF NN. Performed the experiments: KS AMR RC DA EA ML CE FS MS G. Turri. Analyzed the data: AS MF AM EB MC NN. Contributed reagents/materials/analysis tools: AS MC AF NN. Wrote the paper: AS MF KS NN.

## References

- Herbst RS, Heymach JV, Lippman SM (2008) Lung cancer. *N Engl J Med* 359: 1367–1380.
- Herbst RS, Lippman SM (2007) Molecular signatures of lung cancer—toward personalized therapy. *N Engl J Med* 356: 76–78.
- Siegel R, Naishadham D, Jemal A (2012) Cancer statistics, 2012. *CA Cancer J Clin* 62: 10–29.
- Travis WD, World Health Organization, International Agency for Research on Cancer, International Association for the Study of Lung Cancer, International Academy of Pathology. (2004) Pathology and genetics of tumours of the lung, pleura, thymus and heart. Lyon: IARC Press.
- Fassina A, Cappellesso R, Simonato F, Lanza C, Marzari A, et al. (2012) Fine needle aspiration of non-small cell lung cancer: current state and future perspective. *Cytopathology* 23: 213–219.
- Fassina A, Cappellesso R, Fassan M (2011) Classification of non-small cell lung carcinoma in transthoracic needle specimens using microRNA expression profiling. *Chest* 140: 1305–1311.
- Rossi A, Pasquale R, Esposito C, Normanno N (2013) Should epidermal growth factor receptor tyrosine kinase inhibitors be considered ideal drugs for the treatment of selected advanced non-small cell lung cancer patients? *Cancer Treat Rev* 39: 489–497.
- Mok TS, Wu YL, Thongprasert S, Yang CH, Chu DT, et al. (2009) Gefitinib or carboplatin-paclitaxel in pulmonary adenocarcinoma. *N Engl J Med* 361: 947–957.
- Douillard JY, Shepherd FA, Hirsh V, Mok T, Socinski MA, et al. (2010) Molecular predictors of outcome with gefitinib and docetaxel in previously treated non-small-cell lung cancer: data from the randomized phase III INTEREST trial. *J Clin Oncol* 28: 744–752.
- Lipson D, Capelletti M, Yelensky R, Otto G, Parker A, et al. (2012) Identification of new ALK and RET gene fusions from colorectal and lung cancer biopsies. *Nat Med* 18: 382–384.
- Sun Y, Ren Y, Fang Z, Li C, Fang R, et al. (2010) Lung adenocarcinoma from East Asian never-smokers is a disease largely defined by targetable oncogenic mutant kinases. *J Clin Oncol* 28: 4616–4620.
- Janne PA, Shaw AT, Pereira JR, Jeannin G, Vansteenkiste J, et al. (2013) Selumetinib plus docetaxel for KRAS-mutant advanced non-small-cell lung cancer: a randomised, multicentre, placebo-controlled, phase 2 study. *Lancet Oncol* 14: 38–47.
- De Luca A, Normanno N (2010) Predictive biomarkers to tyrosine kinase inhibitors for the epidermal growth factor receptor in non-small-cell lung cancer. *Curr Drug Targets* 11: 851–864.
- Normanno N, Rachiglio AM, Roma C, Fenizia F, Esposito C, et al. (2013) Molecular diagnostics and personalized medicine in oncology: challenges and opportunities. *J Cell Biochem* 114: 514–524.
- Pirker R, Herth FJ, Kerr KM, Filipits M, Taron M, et al. (2012) Consensus for EGFR mutation testing in non-small cell lung cancer: results from a European workshop. *J Thorac Oncol* 5: 1706–1713.
- Zhou Q, Zhang XC, Chen ZH, Yin XL, Yang JJ, et al. (2011) Relative abundance of EGFR mutations predicts benefit from gefitinib treatment for advanced non-small-cell lung cancer. *J Clin Oncol* 29: 3316–3321.
- Goto K, Satouchi M, Ishii G, Nishio K, Hagiwara K, et al. (2012) An evaluation study of EGFR mutation tests utilized for non-small-cell lung cancer in the diagnostic setting. *Ann Oncol* 23: 2914–2919.
- Geurts-Giele WR, Dirckx-van der Velden AW, Bartalits NM, Verhoog LC, Hanselaar WE, et al. (2013) Molecular diagnostics of a single multifocal non-small cell lung cancer case using targeted next generation sequencing. *Virchows Arch* 462: 249–254.
- Gazziero A, Guzzardo V, Aldighieri E, Fassina A (2009) Morphological quality and nucleic acid preservation in cytopathology. *J Clin Pathol* 62: 429–434.
- Cingolani P, Platts A, Wang le L, Coon M, Nguyen T, et al. (2012) A program for annotating and predicting the effects of single nucleotide polymorphisms, SnpEff: SNPs in the genome of *Drosophila melanogaster* strain w1118; iso-2; iso-3. *Fly (Austin)* 6: 80–92.
- Robinson JT, Thorvaldsdottir H, Winckler W, Guttman M, Lander ES, et al. (2011) Integrative genomics viewer. *Nat Biotechnol* 29: 24–26.
- Sorio C, Moore PS, Ennas MG, Tecchio C, Bonora A, et al. (2004) A novel cell line and xenograft model of ampulla of Vater adenocarcinoma. *Virchows Arch* 444: 269–277.
- Marchetti A, Normanno N, Pinto C, Taddei GL, Adamo V, et al. (2010) Recommendations for mutational analysis of EGFR in lung carcinoma. *Pathologica* 102: 119–126.
- Fassina A, Gazziero A, Zardo D, Corradin M, Aldighieri E, et al. (2009) Detection of EGFR and KRAS mutations on trans-thoracic needle aspiration of lung nodules by high resolution melting analysis. *J Clin Pathol* 62: 1096–1102.
- Normanno N, De Luca A, Bianco C, Strizzi L, Mancino M, et al. (2006) Epidermal growth factor receptor (EGFR) signaling in cancer. *Gene* 366: 2–16.
- Sanchez-Cespedes M (2011) The role of LKB1 in lung cancer. *Fam Cancer* 10: 447–453.
- Gao Y, Ge G, Ji H (2011) LKB1 in lung cancerigenesis: a serine/threonine kinase as tumor suppressor. *Protein Cell* 2: 99–107.
- Ware KE, Marshall ME, Heasley LR, Marek L, Hinz TK, et al. (2010) Rapidly acquired resistance to EGFR tyrosine kinase inhibitors in NSCLC cell lines through de-repression of FGFR2 and FGFR3 expression. *PLoS One* 5: e14117.
- Hammerman PS, Sos ML, Ramos AH, Xu C, Dutt A, et al. (2011) Mutations in the DDR2 kinase gene identify a novel therapeutic target in squamous cell lung cancer. *Cancer Discov* 1: 78–89.
- An SJ, Chen ZH, Su J, Zhang XC, Zhong WZ, et al. (2012) Identification of enriched driver gene alterations in subgroups of non-small cell lung cancer patients based on histology and smoking status. *PLoS One* 7: e40109.
- Imielinski M, Berger AH, Hammerman PS, Hernandez B, Pugh TJ, et al. (2012) Mapping the hallmarks of lung adenocarcinoma with massively parallel sequencing. *Cell* 150: 1107–1120.
- Ellis LM, Hicklin DJ (2009) Resistance to Targeted Therapies: Refining Anticancer Therapy in the Era of Molecular Oncology. *Clin Cancer Res* 15: 7471–7478.
- Vivanco I, Rohle D, Versela M, Iwanami A, Kuga D, et al. (2010) The phosphatase and tensin homolog regulates epidermal growth factor receptor (EGFR) inhibitor response by targeting EGFR for degradation. *Proc Natl Acad Sci U S A* 107: 6459–6464.
- Kawano O, Sasaki H, Endo K, Suzuki E, Haneda H, et al. (2006) PIK3CA mutation status in Japanese lung cancer patients. *Lung Cancer* 54: 209–215.
- Cheng L, Alexander RE, MacLennan GT, Cummings OW, Montironi R, et al. (2012) Molecular pathology of lung cancer: key to personalized medicine. *Mod Pathol* 25: 347–369.
- Pao W, Wang TY, Riely GJ, Miller VA, Pan Q, et al. (2005) KRAS mutations and primary resistance of lung adenocarcinomas to gefitinib or erlotinib. *PLoS Med* 2: e17.
- Pao W, Hutchinson KE (2012) Chipping away at the lung cancer genome. *Nat Med* 18: 349–351.
- Pao W, Girard N (2011) New driver mutations in non-small-cell lung cancer. *Lancet Oncol* 12: 175–180.
- Fassina A, Corradin M, Zardo D, Cappellesso R, Corbetti F, et al. (2011) Role and accuracy of rapid on-site evaluation of CT-guided fine needle aspiration cytology of lung nodules. *Cytopathology* 22: 306–312.
- Kris MG, Johnson BE, Kwiatkowski DJ, Iafrate AJ, Wistuba II, et al. (2011) Identification of driver mutations in tumour specimens from 1000 patients with lung adenocarcinoma for the Lung Cancer Mutation Consortium (LCMC). *J Clin Oncol* 29: Suppl, abstract CRA 7506.
- Peled N, Palmer G, Hirsch FR, Wynes MW, Ilouze M, et al. (2012) Next-generation sequencing identifies and immunohistochemistry confirms a novel crizotinib-sensitive ALK rearrangement in a patient with metastatic non-small-cell lung cancer. *J Thorac Oncol* 7: e14–16.
- Daniels M, Goh F, Wright CM, Sriram KB, Relan V, et al. (2012) Whole genome sequencing for lung cancer. *J Thorac Dis* 4: 155–163.
- Thomas A, Rajan A, Lopez-Chavez A, Wang Y, Giaccone G (2013) From targets to targeted therapies and molecular profiling in non-small cell lung carcinoma. *Ann Oncol* 24: 577–585.
- Buttitta F, Felicioni L, Del Gramastro M, Filice G, Di Lorito A, et al. (2013) Effective Assessment of Egrf Mutation Status in Bronchoalveolar Lavage and Pleural Fluids by Next Generation Sequencing. *Clin Cancer Res* 19: 691–698.
- Chilosi M, Murer B (2010) Mixed adenocarcinomas of the lung: place in new proposals in classification, mandatory for target therapy. *Arch Pathol Lab Med* 134: 55–65.