

Biomarkers in Heart Failure with Preserved Ejection Fraction

Antoni Bayes-Genis ^{1,2,3}, Germán Cediel ^{1,3}, Mar Domingo ^{1,3}, Pau Codina ^{1,3}, Evelyn Santiago^{1,3} and Josep Lupón ^{1,3}

1. Heart Institute, University Hospital Germans Trias i Pujol, Badalona, Spain; 2. Department of Medicine, Universitat Autònoma de Barcelona, Barcelona, Spain; 3. CIBERCV, Instituto de Salud Carlos III, Madrid, Spain

Abstract

Heart failure with preserved ejection fraction (HFpEF) is a heterogeneous disorder developing from multiple aetiologies with overlapping pathophysiological mechanisms. HFpEF diagnosis may be challenging, as neither cardiac imaging nor physical examination are sensitive in this situation. Here, we review biomarkers of HFpEF, of which the best supported are related to myocardial stretch and injury, including natriuretic peptides and cardiac troponins. An overview of biomarkers of inflammation, extracellular matrix derangements and fibrosis, senescence, vascular dysfunction, anaemia/iron deficiency and obesity is also provided. Finally, novel biomarkers from -omics technologies, including plasma metabolites and circulating microRNAs, are outlined briefly. A cardiac-centred approach to HFpEF diagnosis using natriuretic peptides seems reasonable at present in clinical practice. A holistic approach including biomarkers that provide information on the non-cardiac components of the HFpEF syndrome may enrich our understanding of the disease and may be useful in classifying HFpEF phenotypes or endotypes that may guide patient selection in HFpEF trials.

Keywords

Heart failure with preserved ejection fraction, natriuretic peptides, troponin, insulin-like growth factor-binding protein-7, interleukin-1 receptor-like 1, fibrosis

Disclosure: AB-G has received speaker fees or participated on boards from Abbott, AstraZeneca, Boehringer Ingelheim, Roche Diagnostics, Critical Diagnostics, Vifor and Novartis. All other authors have no conflicts of interest to declare.

Received: 22 December 2021 **Accepted:** 2 March 2022 **Citation:** *Cardiac Failure Review* 2022;8:e20. **DOI:** <https://doi.org/10.15420/cfr.2021.37>

Correspondence: Antoni Bayes-Genis, Heart Institute, Hospital Universitari Germans Trias i Pujol, Department of Medicine, UAB, Carretera del Canyet s/n 08916, Badalona, Spain. E: abayesgenis@gmail.com

Open Access: This work is open access under the CC-BY-NC 4.0 License which allows users to copy, redistribute and make derivative works for non-commercial purposes, provided the original work is cited correctly.

Heart failure (HF) with preserved ejection fraction (HFpEF) is a heterogeneous disorder developing from multiple aetiologies with overlapping pathophysiological mechanisms. Circulating biomarkers reflect cardiac as well as non-cardiac abnormalities, and their measurements often provide insights into pathophysiological processes associated with HF. The clinical uptake of biomarkers for diagnosing HFpEF has generally been poor, with only cardiac natriuretic peptides (NPs) having emerged as clinically relevant.¹ Indeed, current European Society of Cardiology (ESC)/Heart Failure Association guidelines provide a class IB recommendation for NPs for diagnosis of suspected HF and NPs are a major criterion for establishing the diagnosis of HFpEF.¹

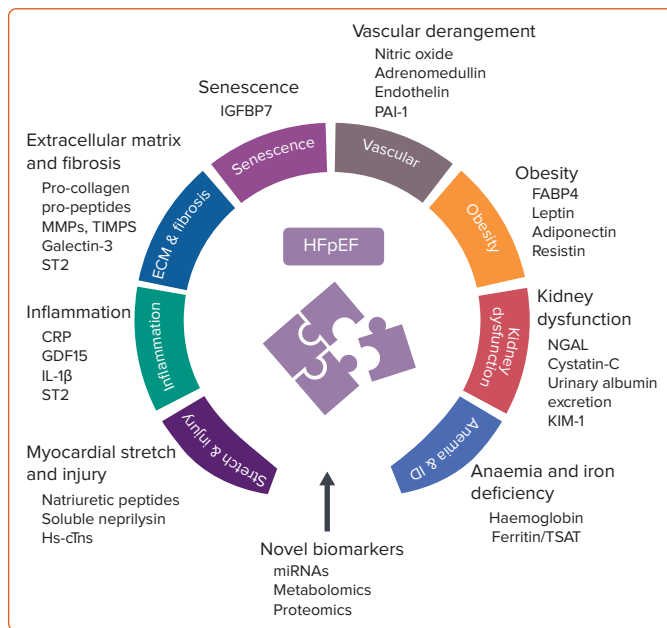
In this review we discuss identified HFpEF biomarkers derived from different pathological pathways. Most evidence is related to myocardial stretch and injury biomarkers, including NPs and cardiac troponins. Nevertheless, we also provide a comprehensive overview of biomarkers of inflammation, extracellular matrix derangements and fibrosis, senescence, vascular dysfunction, anaemia/iron deficiency and obesity. Finally, novel biomarkers from -omics technologies, including plasma metabolites and circulating microRNAs, are outlined briefly (*Figure 1*). A long road is ahead of us to better understand the complexity of HFpEF, but a comprehensive multimarker approach may be recommended to characterise specific HFpEF phenotypes/endotypes for optimising therapy and to stratify risk.

Myocardial Stretch and Injury Natriuretic Peptides

Three endogenous NPs are secreted as pre-prohormones: atrial natriuretic peptide (ANP), B-type natriuretic peptide (BNP) and C-type natriuretic peptide. All these peptides act as hormones with pleiotropic effects contributing to cardiovascular homeostasis and pressure and volume overload counter-regulatory mechanisms.² BNP and N-terminal proBNP (NT-proBNP) exhibit longer plasma half-lives (22 minutes and 70 minutes, respectively) compared to ANP (2 minutes); most of the evidence related to NPs in HF is from these two NPs, which are the gold standard diagnostic and prognostic biomarkers in HF patients.¹ The pathophysiological mechanism of NP elevation in the setting of HF is well understood: BNP is produced primarily and secreted in the cardiac ventricles as a pro-hormone in response to myocardial stretch, to later be cleaved into vasoactive BNP and inactive NT-proBNP.^{3,4} These NPs have been directly correlated with several haemodynamic measures including left ventricular (LV) end-diastolic pressure, LV end-systolic and end-diastolic volumes and pulmonary capillary wedge pressure.^{5,6}

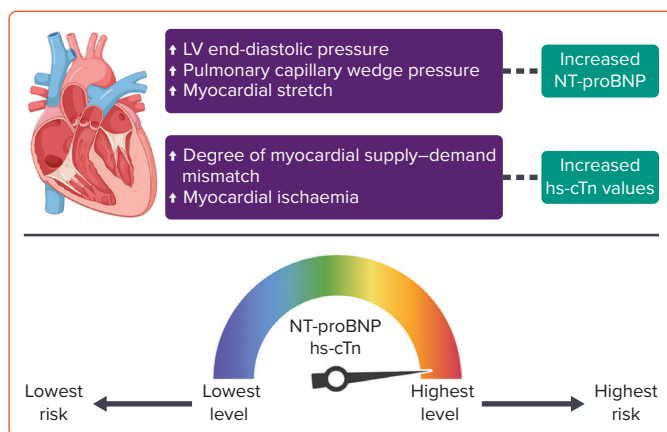
The use of NPs has been rigorously studied as a diagnostic tool in HFpEF (*Figure 2*). A recent meta-analysis of 51 studies found that NPs have reasonable diagnostic performance in the detection of HFpEF in a non-acute setting (area under the receiver operating characteristics curve 0.80; 95% CI [0.73–0.87]; $I^2=86%$) and are also a useful tool for ruling out

Figure 1: Holistic Schematic of Biomarkers in Heart Failure with Preserved Ejection Fraction



CRP = C-reactive protein; FABP = fatty-acid-binding protein; GDF = growth differentiation factor; HFpEF = heart failure with preserved ejection fraction; Hs-cTn = high-sensitivity cardiac troponin; IGFBP = insulin-like growth factor-binding protein; IL = interleukin; KIM = kidney injury molecule; miRNA = microRNA; MMP = matrix metalloproteinase; NGAL = neutrophil gelatinase-associated lipocalin; PAI = plasminogen activator inhibitor; ST2 = 2 interleukin-1 receptor-like 1 (also known as suppression of tumorigenicity 2); TIMP = tissue inhibitor of metalloproteinase; TSAT = transferrin saturation.

Figure 2: Biomarkers of Myocardial Stretch and Cardiac Injury in Heart Failure with Preserved Ejection Fraction



Hs-cTn = high-sensitivity cardiac troponin; LV = left ventricular; NT-proBNP = N-terminal pro B-type natriuretic peptide.

diastolic dysfunction.⁷ Interestingly, lower levels of NT-proBNP are found in patients with HFpEF in comparison with those with HF with reduced ejection fraction (HFrEF),^{8,9} possibly because of the association of NPs with end-diastolic wall stress that appears to be lower in HFpEF.¹⁰ Obokata et al. attributed the lower NPs in HFpEF to lower wall stress due to pericardial restraint, which might be a dominant mechanism in some HFpEF patients.¹¹ It is also remarkable that several cardiac and non-cardiac causes may impact NP levels, and they should be considered when attempting HFpEF diagnosis. Increased levels of NPs are evident in AF, the elderly and in people with severe renal impairment. In contrast, NP levels tend to be lower in obese patients, irrespective of volume status.⁵ These characteristics are frequently found in HFpEF patients, leading to

evident variations in NP concentrations when different studies are compared. The observational study conducted by Anjan et al. found that nearly one-third of HFpEF patients had BNP levels below 100 pg/ml, while the I-PRESERVE trial revealed a median NT-proBNP concentration of 341 pg/ml and the observational study performed by Moliner et al. found a median NT-proBNP concentration of 956 pg/ml in HFpEF patients.^{8,12} Despite these considerations, the optimal cut-offs for distinguishing HFpEF and HFrEF from controls without HF appear to be remarkably similar, without differences according to HF phenotype in the diagnostic algorithm recommended in the ESC guidelines.¹³

The utility of NPs in HFpEF is not restricted to their diagnostic capacity. Several studies have also investigated their ability to identify patients at risk for adverse events. A recent unsupervised cluster analysis based on a broad range of circulating biomarkers found that higher levels of NT-proBNP identify a subgroup of HFpEF patients (who also shared higher levels of cardiac troponin) who are at the highest risk of death and/or HF hospitalisation (62.8% over a median follow-up of 21 months).¹⁴

In the acute setting, NT-proBNP level is also considered a strong independent predictor of all-cause mortality, as recently described in the study by Lopuszynski et al. performed in a cohort of patients with chronic HF exacerbation and HFpEF.¹⁵ In this respect, previous studies have also reported equal prognostic significance of either admission levels or discharge levels of NPs in patients with HFpEF hospitalised for acute decompensated HF.¹⁶ NPs also confer the same relative risk information in HFpEF as in HFrEF in this acute setting, with similar adjusted prognostic relative risks in patients with both phenotypes for the relative changes in NT-proBNP levels during hospitalisation (Figure 2).¹⁷

Finally, in the field of patient management, it has been suggested that measuring NP concentrations should be useful in guiding therapy in the whole spectrum of HF, including the group of patients with HFpEF.^{18,19} However, current evidence does not support the routine measurement of BNP or NT-proBNP to guide titration of therapy. In this regard, the widespread strategy of using elevated plasma concentrations of NPs for patient selection in HFpEF trials has also been questioned, due to the lack of or lower benefit of irbesartan or aldosterone antagonists in patients with HFpEF and higher baseline NP values in the I-PRESERVE and TOPCAT trials, or the absence of sacubitril/valsartan treatment effect modification according to baseline NPs in the PARAGON-HF trial.^{12,20,21}

Soluble Neprilysin

In the cardiovascular system, neprilysin cleaves numerous vasoactive peptides. Some of these peptides have vasodilating effects (including NPs, adrenomedullin and bradykinin), and others have vasoconstrictor effects (angiotensin I and II and endothelin [ET]-1, among others).²²

Neprilysin serum levels (sNEP) exhibited significant prognostic value in both chronic and acutely decompensated HF.^{23–26} However, in patients with HFpEF results were controversial, perhaps due to different sNEP quantification methods.^{27,28} It is not only the prognostic role of sNEP that has been controversial: even blood sNEP concentrations can be very dissimilar with large differences among studies – some showing lower levels in HFpEF than in controls and others showing higher levels in HFpEF than in HFrEF patients.^{23,27,29} The correct quantification of sNEP remains a challenge that needs to be overcome to suppress potential biases regarding the interpretation of the different studies.³⁰ Interestingly, some sNEP quantification methods showed that circulating sNEP was catalytically active.³¹

With the hypothesis that higher sNEP levels would correlate with lower NP levels, worse diastolic function, and subsequent clinical incident HFpEF, Reddy et al. performed a population study with 1,536 participants from Olmsted County, Minnesota.³² The authors found that low sNEP was paradoxically associated with worse diastolic dysfunction and hypertension but not with outcomes, including incident HF, over a median of 10.7 years of follow-up.

Due to these controversial results the assessment of sNEP in HFpEF patients is not currently recommended.³⁰ However, it has recently been speculated that higher sNEP levels may identify HFpEF patients who might benefit from treatment with sacubitril/valsartan.³³

High-sensitivity Cardiac Troponin

High-sensitivity cardiac troponin (hs-cTn) is universally recognised for its central role in defining myocardial injury in patients with acute coronary syndrome. However, hs-cTn can also predict the development of HF and reflect ongoing myocardial injury in the wide spectrum of HF.^{34–36} More specifically, elevated hs-cTn discriminates a subgroup of patients with HFpEF who have ongoing myocardial damage, higher wall stress or impaired microcirculation, as evidenced in a recent mechanistic study performed by Obokata et al.³⁷ They assessed the relationship between troponin elevation and HFpEF physiology in 38 HFpEF patients and 20 control patients. HFpEF patients were found to have significantly higher troponin levels at rest, with the degree of elevation directly correlated to higher pulmonary capillary wedge pressure and worse systolic and diastolic tissue Doppler velocities. Troponin levels were also correlated with reductions in oxygen supply and a corresponding greater degree of supply–demand mismatch.

Hs-cTn has been shown to be of value in predicting the onset of HFpEF over a very long period in high-risk subjects in the general population and the elderly.^{38,39} The role of hs-cTn as a predictive biomarker in chronic HFpEF has also been a matter of research. Several studies have identified a significant association between elevated hs-TnT at admission and at discharge with adverse events in patients hospitalised with decompensated HFpEF.^{40–42} The predictive capabilities of hs-cTnT and hs-cTnI for secondary events in HFpEF have also been assessed. Both hs-cTnT and hs-cTnI are elevated in chronic HFpEF and are independently associated with poorer outcomes in men (HR 3.33; 95% CI [1.82–6.09]) than in women (HR 1.35; 95% CI 0.94–1.93). The predictive performance for composite outcomes was better for both hs-cTn assays in HFpEF than in HFREF, but the strongest performance in HFpEF appeared to be from hs-TnT. The prognostic role for hs-cTn assays in HFpEF also has a sex-specific concern, as the more sensitive hs-cTnI assay appears to be a better predictor of outcome in men than in women (Figure 2).⁴³

When combining the mechanistic data with the described associations of hs-cTn with adverse clinical outcomes, it appears reasonable to proclaim hs-cTn as a surrogate for a clinically meaningful HFpEF endpoint. This issue was partially addressed in the PARAGON-HF trial.⁴⁴ The investigators found not only that hs-TnT was reduced by sacubitril/valsartan therapy compared with valsartan, but also that patients with a decrease in hs-TnT from randomisation to 16 weeks to a value to at or below the median value of 17 ng/l subsequently had lower risk of the composite outcome compared with those who had persistently elevated hs-TnT values.⁴⁴ Further research will be required to determine whether therapies targeting the mechanism of hs-cTn elevation can improve symptom burden and clinical outcomes in the HFpEF population.

Inflammation C-reactive Protein

C-reactive protein (CRP) may activate the complement system and stimulate cytokine production and thereby cause myocyte loss and promote LV remodelling and dysfunction.⁴⁵ CRP has been shown to attenuate nitric oxide (NO) production and has a direct proinflammatory effect on human endothelial cells.^{46,47} Thus, CRP might worsen HF through multiple mechanisms. There is a close relationship between the number of comorbidities and plasma CRP level.⁴⁸ Serum levels of CRP and pentraxin (PTX)-3, an acute phase protein of the PTX superfamily that also includes CRP, were both found to be significantly higher in HFpEF patients when compared with the non-HF reference group. PTX-3 was found to be an independent inflammatory marker correlated with the presence of LV diastolic dysfunction and HFpEF (Table 1).⁴⁹

In the CANTOS trial, when canakinumab succeeded in lowering high-sensitivity CRP below 2 mg/l, the likelihood of HF hospitalisation was lower.⁵⁰ This study did not discriminate between HFREF and HFpEF, yet patients were old and had a high prevalence of obesity, diabetes and arterial hypertension.

Interleukin-1 β

Interleukin (IL)-1 β is a member of the IL 1 family of cytokines. This cytokine is produced by activated macrophages as a proprotein which is proteolytically processed to its active form by caspase 1 (CASP1/interleukin-1-converting enzyme). This cytokine is an important mediator of the inflammatory response and is involved in a variety of cellular activities, including cell proliferation, differentiation and apoptosis. Preclinical data show that the IL-1 family of cytokines contributes to cardiac dysfunction, and IL-1 blockade with anakinra (a recombinant IL-1 receptor antagonist) in patients with HF may improve cardiorespiratory fitness and prevent HF hospitalisations (Table 1).⁵¹ A randomised study in 31 patients with HFpEF (D-HART2) showed significant increases in treadmill exercise time, lower NT-proBNP levels and improved quality-of-life measures in the group treated with anakinra, without significant change in peak oxygen consumption.⁵²

Interleukin 1 Receptor-like-1

Interleukin-1 receptor-like 1, also known as suppression of tumorigenicity 2 (ST2) has multiple isoforms, including a transmembrane form (ST2L and a soluble circulating form (soluble ST2; sST2). Both ST2L and sST2 are expressed by cardiomyocytes and cardiac fibroblasts in response to mechanical stress, and both isoforms bind to IL-33. IL-33 is also induced by cellular stretch and apparently protects against fibrosis and hypertrophy in mechanically strained tissues via activation of myeloid differentiation primary response gene 88, interleukin-1 receptor-associated kinase, extracellular signal-regulated kinase and, ultimately, nuclear factor- κ B.⁵³

In HF, sST2 production by endothelium and the lungs is upregulated. In *in vitro* and *in vivo* models, ST2L transduces the effects of IL-33, while excess circulating sST2 leads to cardiac fibrosis and remodelling and ventricular dysfunction. It is proposed that circulating sST2 acts as a decoy receptor for IL-33, such that high levels of sST2 block the favourable effects of IL-33 by limiting activation of the cascade triggered by the IL-33/ST2L interaction. Thus, higher levels of sST2 are associated with increased myocardial fibrosis, adverse cardiac remodelling and worse cardiovascular outcomes (Table 1).⁵⁴

In HFpEF, sST2 levels have been associated with proinflammatory comorbidities, right ventricular (RV) pressure overload and dysfunction,

Table 1: Biomarkers of Inflammation and Extracellular Matrix in Heart Failure with Preserved Ejection Fraction

Biomarker	Mechanism of Action	Clinical Significance in HFpEF
CRP	Activates the complement system and stimulates cytokine production	Inflammatory marker correlated with the presence of left ventricular diastolic dysfunction and HFpEF ⁴⁹
IL-1β	Mediator of the inflammatory response involved in cell proliferation, differentiation, and apoptosis	IL-1 blockade may improve cardiorespiratory fitness and prevent HF hospitalisations ⁵¹
ST2	High levels block the favourable effects of IL-33 by limiting activation of the cascade triggered by the IL-33/ST2L interaction	Higher levels of ST2 are associated with increased myocardial fibrosis, adverse cardiac remodelling, and worse cardiovascular outcomes ⁵⁴
GDF15	Member of the transforming growth factor β cytokine superfamily that is highly expressed in states of inflammatory stress	Increased circulating levels of GDF15 are associated with an increased risk of developing HF. In established HF, increases in GDF15 over time are associated with adverse outcomes. ⁵⁶
Pro-collagen propeptides (PIIINP and PIP)	Markers of active myocardial collagen turnover. PIP strongly correlates with the turnover of extracellular cardiac matrix proteins and fibrosis.	Circulating PIIINP levels are predictive of death and hospitalisation in HF ⁶⁰
MMPs	Degradation of extracellular matrix proteins and process bioactive molecules	MMP2 and MMP9 activity protein levels are enhanced in haemodynamic models of HFpEF ⁶³
TIMPs	Inhibitor of the MMPs	Higher levels of TIMP1 at baseline and increases over time are associated with worse cardiovascular outcomes ⁶⁴
Galectin-3	Implicated in myofibroblast proliferation, fibrogenesis, tissue repair, inflammation, and ventricular remodelling	HFpEF phenotyping, risk stratification, and therapeutic targeting ⁷⁷

CRP = C-reactive protein; GDF = growth differentiation factor; HF = heart failure; HFpEF = heart failure with preserved ejection fraction; IL = interleukin; MMP = matrix metalloproteinases; PIIINP = pro-collagen type III N-terminal peptide; PIP = propeptide of procollagen; ST2 = interleukin-1 receptor-like (also known as suppression of tumorigenicity 2); ST2L = ST2 ligand; TIMP = tissue inhibitor of metalloproteinase.

and systemic congestion, but not with LV geometry or function. These data suggest that sST2 may be a marker of systemic inflammation in HFpEF and potentially of extracardiac origin.⁵⁵ Indeed, the Paulus and Tschoepe novel paradigm for HFpEF, of comorbidities driving myocardial dysfunction and remodelling through microvascular endothelial inflammation, has now been validated in several clinical cohorts and animal models.

Growth Differentiation Factor 15

Growth differentiation factor 15 (GDF15) is a member of the transforming growth factor β cytokine superfamily that is highly expressed in states of inflammatory stress.

GDF15 integrates information from cardiac and extracardiac disease pathways that are linked to the incidence, progression and prognosis of HF. Increased circulating levels of GDF15 are associated with an increased risk of developing HF in apparently healthy individuals (Table 1).⁵⁶ After an acute coronary syndrome, elevated levels of GDF15 are indicative of an increased risk of developing adverse LV remodelling and HF. In patients with established HF, the levels of GDF15 and increases in GDF15 over time are associated with adverse outcomes. The information provided by GDF15 is independent of established risk factors and cardiac biomarkers, including BNP (Table 1).⁵⁶

In clinical studies, median GDF15 values were similarly elevated in HFpEF and HFrEF, whereas NT-proBNP was significantly lower in HFpEF than in HFrEF. The similarly elevated levels and independent prognostic utilities of GDF15 in HFrEF and HFpEF suggest that beyond haemodynamic stress (NT-proBNP), inflammatory injury (GDF15) may play an important role in both HF syndromes.⁵⁷

Extracellular Matrix and Fibrosis Pro-collagen Propeptides

One of the hallmarks of interstitial fibrosis is deposition of types I and III fibrillar collagen. The collagen precursor, pro-collagen, consists of three

polypeptide chains arranged in a triple helix, with non-helical N-terminal and C-terminal sequences. The N-terminal and C-terminal peptides are cleaved by endopeptidases after pro-collagen has been secreted from the cell.⁵⁸

Elevated levels of pro-collagen type III N-terminal peptide (PIIINP) have been observed in individuals with hypertension, dilated cardiomyopathy, hypertrophic cardiomyopathy and recent MI, suggesting that the circulating peptide may be a useful marker of active myocardial collagen synthesis.⁵⁹ In a retrospective analysis from RALES, high baseline levels of circulating PIIINP were predictive of death and hospitalisation in HF patients. Interestingly, the benefit of spironolactone, a putative anti-fibrotic agent, was observed primarily in participants with plasma PIIINP levels above the median (Table 1).⁶⁰

Serum C-terminal propeptide of procollagen type I (PIP) strongly correlates with the turnover of extracellular cardiac matrix proteins and fibrosis. In this hypothesis-generating, mechanistic trial in stable HFpEF patients with type 2 diabetes (T2D), neither long-term administration of torasemide nor furosemide was associated with a significant effect on myocardial fibrosis, as assessed by serum PIP. Further studies are urgently needed in this field. More specific diuretic and anti-fibrotic treatment strategies in T2D and/or HFpEF are warranted.⁶¹

Matrix Metalloproteinases and Tissue Inhibitor of Metalloproteinase

Matrix metalloproteinases (MMPs) are calcium-dependent zinc-containing endopeptidases. These enzymes are capable of degrading all kinds of extracellular matrix proteins, but can also process a number of bioactive molecules. They are known to be involved in the cleavage of cell surface receptors, the release of apoptotic ligands (such as Fas ligand) and chemokine/cytokine inactivation. MMPs are also thought to play a major role in cell behaviours such as cell proliferation, migration, differentiation, angiogenesis, apoptosis and host defense.⁶² Tissue inhibitor of metalloproteinase (TIMP) is a natural glycoprotein inhibitor of the MMPs.

MMP2 and MMP9 activity and TIMP1 protein levels were enhanced in haemodynamic models of HFpEF, while metabolic models showed no changes in MMP2, -8, -9, -11, -14, -15, TIMP-1, -2 and -3 mRNA expression.⁶³ In a PARAGON-HF collagen biomarker substudy, sacubitril/valsartan decreased TIMP1 by 8% compared with valsartan alone, consistently in men and women and patients with LV ejection fraction (LVEF) above or below the median of 57%. Higher levels of TIMP1 at baseline and increases at 16 weeks were associated with higher primary endpoint event rates (*Table 1*).⁶⁴

Galectin-3

Galectin-3 is a β -galactoside-binding member of the lectin family and is encoded by a single gene, *LGALSS3*, located on chromosome 14. Galectin-3 is an ~30 kDa protein and contains a carbohydrate recognition binding domain of ~130 amino acids that enables the specific binding of β -galactosidases.

Galectin-3 has been linked to HF development and is implicated in a variety of processes that are thought to play an important role in the pathophysiology of HFpEF, such as myofibroblast proliferation, fibrogenesis, tissue repair, inflammation and ventricular remodelling.^{65,66} In experimental studies, several rodent models of pressure overload, such as hypertension and mice subjected to aortic constriction, have shown significant increases in myocardial, renal and vascular galectin-3 expression.^{65,67,68}

Galectin-3 levels have been shown to correlate with HF severity and are highly associated with renal function.^{69–73} Changes in galectin-3 over time were shown to have an important prognostic value in HF patients, with increases in galectin-3 independently associated with an increased risk of all-cause mortality and HF hospitalisations.^{74–76} A ‘galectin-3-positive phenotype’ may predict the development of HFpEF in patients with comorbidities and could be useful for phenotyping, risk stratification, and therapeutic targeting of those individuals where fibrosis is a major contributor to the syndrome (*Table 1*).⁷⁷ In addition, galectin-3 is able to identify HF patients at low risk for adverse events.⁷⁸

Vascular Mechanisms

Nitric Oxide

NO is produced by the enzymatic action of NO synthase (NOS) in vascular endothelium. Vascular actions of NO include direct vasodilation, indirect vasodilation by inhibiting vasoconstrictor influences, along with anti-thrombotic, anti-inflammatory and anti-proliferative effects.⁷⁹ Low myocardial cyclic guanosine monophosphate (cGMP)-dependent protein kinase type I (PKG) activity is associated with raised cardiomyocyte resting tension and increased myocardial nitrosative/oxidative stress in HFpEF patients compared with HFrEF patients and patients with aortic stenosis.⁸⁰ In several cohorts, HFpEF patients had lower serum NO-derived metabolites than those of HFrEF patients or controls without HF.^{81,82} However, this lower serum NO level did not correlate with the degree of LV hypertrophy or myocardial fibrosis by imaging.⁸² Thus, reduced NO bioavailability is considered to be an integral part of the inflammatory pathogenesis that results in myocardial dysfunction in HFpEF (*Table 2*).⁸³ In a rat model of T2D, long-term application of the phosphodiesterase-5A inhibitor vardenafil, started in the prediabetic phase, effectively prevented development of HFpEF, reduced the pathophysiological features of T2D-associated cardiomyopathy and restored the activity of the cGMP–PKG axis.⁸⁴ Unfortunately, human clinical trials testing NO as a therapeutic strategy have not demonstrated clinical benefits in HFpEF.^{85–88} Recently, results from a mouse model of HFpEF demonstrated that genetic inhibition

of inducible NOS improves ventricular relaxation and exercise performance, providing a biological explanation for the failure of NO-inducing approaches as therapeutic strategies.⁸⁹

Adrenomedullin

Adrenomedullin (ADM) is a potent vasodilator peptide, with additional immunomodulating, antiproliferative and antiapoptotic effects.⁹⁰ ADM gene expression is significantly increased in the Dahl salt-sensitive rat model of HFpEF.⁹¹ In a large community-based study, mid-regional pro-ADM (MR-proADM) could help in identifying new-onset HFpEF.⁹² In the same way, in HFpEF patients from the KaRen biomarker substudy, ADM predicted HF severity and prognosis.³⁸ In a cross-sectional analysis from the prospective cohort program DIAST-CHF, MR-proADM was independently associated with submaximal exercise capacity when added to the base model, which included classical risk factors for HFpEF.⁹³ In a prospective study, HFpEF patients displayed higher levels of MR-proADM at rest and during exercise in comparison with subjects without HF. These high neurohormone levels were associated with pulmonary haemodynamic derangements, limitations in RV functional reserve, reduced cardiac output and more profoundly impaired exercise capacity in HFpEF (*Table 2*).⁹⁴ Recently, ADM has been identified as an important marker of volume expansion and prognostically relevant feature in HFpEF patients with an obese phenotype with important prognostic implications.⁹⁵

Endothelin

ET is the most potent vasoconstrictor peptide known in humans. It is produced in higher concentrations by endothelial cells and is involved in the regulation of vascular tone. In the LURIC study, a single cut-off point (0.8 fmol/ml) of Big-ET-1 was significantly associated with higher incidence rates of cardiovascular death at both intermediate and high NT-proBNP levels.⁹⁶ In a *post hoc* analysis of the RELAX trial, plasma ET-1 levels were significantly associated with lower exercise oxygen consumption both at baseline and longitudinally over 24 weeks.⁹⁷ ET-1 levels were predictive of 1-year HF hospitalisation and were associated with long-term mortality in HFpEF patients (*Table 2*), suggesting that ET-1 could be a biomarker in HFpEF and a potential therapeutic target.⁹⁸

Following this, in a prospective study with HFpEF patients, the dual ET-A/ET-B receptor inhibitor macitentan improved HFpEF by abrogating adverse cardiac remodelling via antihypertrophic mechanisms and by reducing stiffness.⁹⁹ In the same population, sitaxsentan, a selective ET-A receptor antagonist, increased exercise tolerance but did not improve any of the secondary endpoints such as LV mass or diastolic function.¹⁰⁰

Plasminogen Activator Inhibitor-1

Plasminogen activator inhibitor-1 (PAI-1) is a serine protease inhibitor that functions as the principal inhibitor of tissue plasminogen activator and urokinase, the activators of plasminogen and hence fibrinolysis. Thus, elevated PAI-1 is a risk factor for thrombosis and atherosclerosis.¹⁰¹ Accordingly, PAI-1 levels were increased in patients with HFpEF in comparison with healthy controls, as were D-dimer and tissue plasminogen activator levels, suggesting that HFpEF is associated with a procoagulant state.¹⁰¹ The tissue plasminogen activator/PAI-1 complex was an independent predictor of mortality from all causes and from cardiovascular causes in patients with HFpEF from the LURIC study (*Table 2*).¹⁰² Nevertheless, in a large study that included four longitudinal community-based cohorts, only NPs and the urinary albumin-to-creatinine ratio were associated with HFpEF,¹⁰³ while PAI-1 showed only a suggestive association.¹⁰⁴

Table 2: Biomarkers of Vascular Derangements and Senescence in Heart Failure with Preserved Ejection Fraction

Biomarker	Mechanism of Action	Clinical Significance in HFpEF
NO	Direct vasodilation, indirect vasodilation by inhibiting vasoconstrictor influences, anti-thrombotic, anti-inflammatory and anti-proliferative effects.	Reduced NO bioavailability is considered to be an integral part of the inflammatory pathogenesis that results in myocardial dysfunction in HFpEF. ⁸³
ADM	Potent vasodilator peptide, with additional immunomodulating, antiproliferative, and antiapoptotic effects	High ADM levels were associated with pulmonary hemodynamic derangements, limitations in right ventricle functional reserve, reduced cardiac output, and more profoundly impaired exercise capacity in HFpEF. ⁹⁴
Endothelin	The most potent vasoconstrictor peptide known in humans, is produced in higher concentrations by endothelial cells, and is involved in the regulation of vascular tone.	ET-1 levels were predictive of 1-year HF hospitalisation and were associated with long-term mortality in HFpEF patients. ⁹⁸
PAI-1	Principal inhibitor of tissue plasminogen activator and urokinase, the activators of plasminogen and hence fibrinolysis. Elevated PAI-1 is a risk factor for thrombosis and atherosclerosis.	tPA/PAI-1 complex was an independent predictor of mortality from all causes and from cardiovascular causes in patients with HFpEF from the LURIC study. ¹⁰²
IGFBP7	Regulates the availability of insulin-like growth factors, stimulates cell adhesion and is associated with inflammation, cellular senescence, tissue aging and obesity.	In a cohort of HFpEF patients, IGFBP7 was elevated and associated with markers of diastolic dysfunction, HF severity, and prognosis. ¹⁰⁸

ADM = adrenomedullin; HF = heart failure; HFpEF = heart failure with preserved ejection fraction; IGFBP = insulin-like growth factor-binding protein; NO = nitric oxide; PAI = plasminogen activator inhibitor; tPA = tissue plasminogen activator.

Senescence Insulin-like Growth Factor-binding Protein 7

The major function of insulin-like growth factor-binding protein (IGFBP) 7 is to regulate the availability of insulin-like growth factors. It also stimulates cell adhesion and is associated with inflammation, cellular senescence, tissue aging and obesity. Some proteins involved in inflammation, such as IGFBP7, formed a conserved network in HFpEF across two independent cohorts from the PROMIS-HFpEF study and may mediate the association between comorbidity burden and echocardiographic indicators of worse haemodynamics and RV dysfunction.¹⁰⁵ Patients with a pan-inflammatory phenotype exhibited the highest circulating levels of inflammatory mediators, more comorbidity, more HF hospitalisations, higher left-atrial volume index and NT-proBNP level, worse renal function, the highest levels of fibrotic biomarkers such as IGFBP7 and the lowest functional capacity, in an HFpEF study that used unsupervised machine learning.¹⁰⁶ Nevertheless, higher concentrations of IGFBP7 were associated with increased risk of cardiovascular events in patients from the I-PRESERVE trial, but after multivariable adjustment this association was no longer present.¹⁰⁷

Regarding diastolic function, in a cohort of HFpEF patients IGFBP7 was elevated and associated with markers of diastolic dysfunction, HF severity and prognosis (Table 2).¹⁰⁸ In HFpEF patients randomised to receive sacubitril/valsartan versus valsartan, higher concentrations of IGFBP7 were associated with abnormalities in diastolic filling and left atrial dilation. Treatment with sacubitril/valsartan resulted in lower IGFBP7 concentrations than did treatment with valsartan.¹⁰⁹ In the same way, in HFpEF patients from the RELAX trial, higher baseline IGFBP7 was modestly correlated with worse diastolic function but its change at 24 weeks was significantly correlated with changes in diastolic function and exercise capacity.¹¹⁰ Another study, comparing controls with normal diastolic function and asymptomatic LV diastolic dysfunction with HFpEF patients, showed a rise in IGFBP7 levels in HFpEF patients that ran parallel to worsening diastolic function.¹¹¹

Obesity Fatty-acid-binding Protein 4

Fatty-acid-binding proteins (FABPs) are intracellular lipid chaperones.¹¹² FABP4 (also known as adipocyte FABP or aP2), plays an important role in the development of obesity, insulin resistance, diabetes and atherosclerosis.¹¹³ Moreover, FABP4 is associated with cardiac remodelling and both left and right ventricular dysfunction.¹¹⁴

FABP4 is highly expressed in response to increased lipolytic signals of catecholamine and NPs. FABP4-deficient mice develop dietary obesity due to reduced efficiency of lipolysis, but not insulin resistance or diabetes.¹¹⁵ It has been postulated that FABP4 activates hormone-sensitive lipase in adipocytes.

A biomarker study of TOPCAT has shown an association between FABP4 and incident risk of death or HF admission, independent of the Meta-Analysis Global Group in Chronic Heart Failure risk score (Table 3);¹¹⁶ similar results were found in another cohort when adjusted for age, sex and NT-proBNP level. Recently, Harada et al. reported that event-free survival is significantly decreased in patients with HFpEF and FABP4 levels ≥ 43.5 ng/ml.¹¹⁴

Leptin

Leptin is an adipocyte-derived circulating protein that modulates food intake and body weight, suggesting that it signals to the brain the magnitude of fat stores. However, in several rodent models of obesity, leptin levels are increased, suggesting resistance to suppress satiety.

In mouse models of obesity with high leptin concentrations, this protein may be protective against LV hypertrophy.¹¹⁷ Obese diabetic dB/dB mice (with functionally inactive leptin) show diastolic dysfunction with preserved LVEF, associated with cardiomyocyte hypertrophy, fibrosis and microvascular rarefaction (Table 3).¹¹⁸ Leptin also acts on the kidney to promote sodium retention, thus increasing the secretion of aldosterone, the activity of the renal sympathetic nerves and the Na⁺-K⁺ ATPase in the renal tubules¹¹⁹ (opposite effect of sodium–glucose cotransporter 2 inhibitors) (Table 3). Patients with HFpEF have a particularly elevated level of leptin, which is associated with better outcome in HFpEF but not in HFpEF¹²⁰ (neither on decompensated HF admission nor in New York Heart Failure Association [NYHA] class).⁹²

Adiponectin

Adiponectin is an adipokine implicated in energy metabolism, increasing insulin sensitivity and beta-oxidation and reducing gluconeogenesis (Table 3).¹²¹ In chronic HF patients, adiponectin is considered to be a marker of catabolic state and disease progression, and low body fat is associated with higher levels of adiponectin.¹²² Beyond metabolic control, adiponectin has been linked to a cardiovascular risk profile (insulin resistance, arteriosclerosis and inflammation).¹²³

Table 3: Biomarkers of Obesity, Renal Dysfunction and Iron Metabolism in Heart Failure with Preserved Ejection Fraction

Biomarker	Mechanism of Action	Clinical Significance in HFpEF
FABP4	Development of obesity, insulin resistance, diabetes, and atherosclerosis	Associated with death or HF admission (adjusted for increased MAGGIC score) ¹¹⁶
Leptin	Regulates appetite, but not in people with obesity (resistance to leptin). Protective against LV hypertrophy.	Resistance to leptin is associated with diastolic dysfunction and promotion of sodium retention ^{118,119}
Adiponectin	Increases insulin sensitivity and b-oxidation Marker of catabolic state and disease progression	Not associated with death or HF admission ¹²⁰
Resistin	Increases insulin resistance and inflammation	Not associated with prognosis. ⁹²
NGAL	Marker of renal injury Increases collagen degradation (by binding to metalloproteinases)	Associated with prognosis in univariate analysis. ¹¹⁶
Cystatin C	Marker of renal injury	Predicts new-onset HFpEF ¹³⁷ Associated with prognosis in univariate analysis. ¹¹⁶
Albuminuria	Marker of kidney damage, systemic inflammation, and endothelial dysfunction	Associated with incident HF hospitalisation. ¹⁴² Independent associated for both cardiovascular and non-cardiovascular death. ¹⁴³
KIM-1	Marker of renal injury	Independently associated with incident HF hospitalisation. ¹⁴⁵ Associated with all-cause mortality. ¹⁴⁷
Haemoglobin	Anaemia decreases oxygen supplies and increases cardiac mass	Independently associated with death or HF admission. ^{150,151}
Iron deficiency	Decreases enzymatic activity of energy production in the mitochondria	Significantly associated with increased all-cause mortality but not with HF hospitalisations. ¹⁵⁵

FABP = fatty-acid-binding protein; HF = heart failure; HFpEF = heart failure with preserved ejection fraction; KIM = kidney injury molecule; LV = left ventricular; MAGGIC = Meta-Analysis Global Group in Chronic; NGAL = neutrophil gelatinase-associated lipocalin.

In experimental models, adiponectin deficiency leads to hypertension, LV hypertrophy and diastolic dysfunction. Accordingly, overexpression of adiponectin in aldosterone-infused mice ameliorated cardiac remodelling without affecting blood pressure and LVEF.¹²⁴ Adiponectin levels are raised in both HFpEF and HFrEF. Patients with plasma adiponectin above a mean of 13.5 mg/l had a 3.4-fold increase in mortality risk, but higher levels have been associated with adverse outcome and poor prognosis only in HFrEF.^{120,125}

Resistin

Resistin is a polypeptide, initially discovered in adipocytes, that has been associated with both insulin resistance and inflammatory response.¹²⁶ Administration of anti-resistin antibodies improves blood sugar in mice with diet-induced obesity.¹²⁷ Moreover, in collared rabbit carotid arteries, resistin has been shown to aggravate atherosclerosis by stimulating monocytes, endothelial cells and vascular smooth muscle cells.¹²⁸ Resistin has been linked with incident HF, and plasma levels are significantly elevated in HF.^{126,129,130} Nevertheless, in HFpEF patients, resistin has not predicted outcomes in univariable analysis (*Table 3*).⁹⁷

Kidney Dysfunction Neutrophil Gelatinase-associated Lipocalin

Neutrophil gelatinase-associated lipocalin (NGAL or lipocalin-2) is a marker of early renal dysfunction.¹³¹ NGAL is massively upregulated after renal tubular injury, but also during inflammation and renal and myocardial ischaemia or infection.¹³² In addition, NGAL may also play a role in atherosclerosis and matrix degradation.

NGAL has been associated with a probable renal protective effect, since it can form complexes with siderophores, chelate the iron released by damaged tubules and prevent hydroxyl radical creation. Moreover, NGAL binds to the MMP-9, slows its degradation, and enhances collagen degradation.¹³³ Plasma NGAL at discharge predicted 30-day outcomes in

patients admitted for acute HF even more strongly than did NT-proBNP.¹³⁴ In the TOPCAT biomarker sub-study, NGAL level tended to be associated with death or HF admission but this association lost significance upon multiple comparison (*Table 3*).¹¹⁶

Cystatin-C

Cystatin C (CysC) is secreted by nucleated cells at a constant rate, filtered and reabsorbed by the glomeruli, and then completely decomposed by intact renal tubules.¹³⁴ CysC provides a more sensitive and accurate method for estimated glomerular filtration rate (eGFR) measurement: serum CysC reflects the GFR, while urine CysC reflects the degree of renal tubular damage. In addition, excess CysC may promote myocardial fibrosis and ventricular hypertrophy and increase atrial volume.^{135,136}

CysC is a strong risk factor for new onset HFpEF (*Table 3*),¹³⁷ and it is significantly associated with the NYHA classification, even after adjustment for eGFR.¹³⁸ Besides, CysC is a strong and independent predictor of an unfavourable outcome on admission in HFpEF.¹³⁹ In chronic HFpEF, CysC tended to be associated with death or HF admission, but without meeting significance in the multivariable analysis (*Table 3*).¹¹⁶

Urinary Albumin Excretion

Increased urinary albumin excretion (UAE) is considered to be an early marker of kidney damage. Albuminuria is considered to be a biomarker of systemic inflammation and endothelial and microvascular dysfunction.¹⁴⁰ Moreover, albuminuria is associated with increased RV and LV remodelling and longitudinal systolic dysfunction.¹⁴¹

Urinary albumin-to-creatinine ratio >300 mg/g has been associated with a 4- to 5-fold increased risk of incident HF hospitalisation (*Table 3*).¹⁴² In established HFpEF, UAE is a powerful and independent predictor of both cardiovascular and non-cardiovascular death (*Table 3*),¹⁴³ in each stratum of eGFR.¹⁴¹

Kidney Injury Molecule-1

Kidney injury molecule-1 (KIM-1), is a transmembrane glycoprotein expressed to regulate the regeneration and repair of the kidney after tubulo-interstitial damage.¹⁴⁴ The urinary level of KIM-1 has been suggested as a clinically relevant biomarker of acute tubular injury. Higher urinary levels of KIM-1 have been associated with an increased risk of incident HF hospitalisations, even after adjustments for age, established risk factors, albuminuria and eGFR (Table 3).¹⁴⁵ In HFrEF, KIM-1 has shown an association with prognosis; recent data also support the prognostic role of KIM-1 in patients with HFrEF on all-cause mortality (Table 3).^{146,147}

Anaemia and Iron Deficiency Haemoglobin (Anaemia)

Anaemia modifies myocardial energy efficiency by lowering oxygen delivery to the myocytes and by increasing cardiac mass, LV end-diastolic pressure and ventricular remodelling. Haemoglobin level is inversely related to LVEF, and an increase in haemoglobin over time is associated with a decrease in LVEF.¹⁴⁸

Defective iron usage, inappropriate erythropoietin production, and depressed bone marrow function due to renal dysfunction and neurohormonal and proinflammatory cytokine activation leading to increased myocardial workload are suggested causes of anaemia in HF.¹⁴⁹

In a *post-hoc* analysis of the TOPCAT-Americas population, the risk of mortality and HF-hospitalisations increased significantly with a decrease in haemoglobin after extensive adjustment; similar data were found in a *post-hoc* analysis of the CHARM-Preserved trial (Table 3).^{150,151} Whether anaemia is a mediator or a marker of poor outcomes and HF severity is not clear, since correcting anaemia does not improve prognosis in HFrEF and no data have been published in HFpEF.

Iron Deficiency (Transferrin Saturation Index, Serum Ferritin)

Iron deficiency is defined as ferritin <100 or 100–299 µg/l with transferrin saturation <20%. Iron deficiency plays an important role in oxygen uptake, transport and storage; the cellular immune response; oxidative metabolism; and cellular energetics.¹⁵² At the cellular level, it is thought to decrease the enzymatic activity of both the Krebs cycle and the mitochondrial respiratory chain.¹⁵³

Iron deficiency has been related to decreased exercise capacity (measured with both peak VO₂ max and 6-minute walking distance) and quality of life in HFpEF patients.¹⁵⁴ Moreover, a recent study has shown that iron deficiency in HFpEF is significantly associated with a 3.5-fold increase in all-cause mortality, but not with HF hospitalisations (Table 3).¹⁵⁵ The on-going FAIR-HFpEF study is evaluating the effects of intravenous iron therapy on exercise capacity, mortality and HF-related hospitalisation rates, as has been previously reported in HFrEF patients.¹⁵⁶

Novel Biomarkers Circulating microRNAs

Circulating microRNAs (miRNAs) offer attractive potential as epigenetic disease biomarkers by virtue of their biological stability and ready accessibility in liquid biopsies. Numerous clinical cohort studies have revealed unique miRNA profiles in different disease settings, suggesting their utility as markers with diagnostic and prognostic applications.¹⁵⁷

The discovery of microRNA clusters that are differentially expressed in HFrEF and HFpEF patients provides an approach to delineate the different

pathobiological pathways underlying HFrEF and HFpEF. A putative biological pathway affected by a panel of eight HFpEF-related miRNAs (hsa-miR-193a-5p, hsa-miR-30a-5p, hsa-miR-106a-5p, hsa-miR-191-5p, hsa-miR-486-5p, hsa-miR-181a-2-3p, hsa-miR-660-5p and hsa-miR-199b-5p) has been reported as valuable in identifying HFpEF.¹⁵⁸

However, there is no consensus on the choice of specific circulating miRNAs that might better serve as HFpEF biomarkers. A recent report found circulating miR-181c as a marker of the response to exercise training in patients with HFpEF.¹⁵⁹ Further research is needed to understand their added value in diagnosis and prognosis at the clinic, beyond their research interest.

Metabolomics

Patients with new-onset HFpEF compared with patients with new-onset HFrEF display a different metabolic profile associated with comorbidities such as diabetes and kidney dysfunction. In an exploratory study, new-onset HFpEF patients had a diverging metabolite pattern compared with that of HFrEF patients, reflecting potential differences in pathophysiological mechanisms.¹⁶⁰ First, HFpEF patients displayed elevated hydroxyproline reflecting fibrosis, elevated symmetrical dimethylarginine indicating oxidative stress, and elevated alanine, cystine and kynurenine reflecting a state of increased inflammation compared with HFrEF patients. Second, HFpEF patients had lower levels of cGMP and cyclic adenosine monophosphate, suggesting impaired cell signalling; lower L-carnitine, indicating mitochondrial dysfunction; and lower levels of lysoPC (18:2) associated with impaired lipid metabolism. Third, serine and arginine levels were lower in HFpEF than in HFrEF, reflecting endothelial dysfunction in HFpEF.¹⁶⁰

Proteomics

Exploration of 92 proteins from the Olink cardiovascular II panel and their association with obese HFpEF has been recently reported in the LIFE-Heart study (999 patients with HFpEF and 999 patients without HF). Obese HFpEF patients exhibited higher circulating biomarkers of volume expansion (adrenomedullin), myocardial fibrosis (thrombospondin-2) and systemic inflammation (galectin-9, CD4) compared to obese non-HFpEF or lean HFpEF patients.

In the setting of HFpEF and diabetes, Hanff et al., using SomaScan assays and proteomics analysis of plasma from participants in the TOPCAT trial and the Penn Heart Failure Study, identified 10 proteins with significantly different expression in patients with HFpEF and diabetes.¹⁶¹ These proteins included fatty acid-binding protein, alpha-1-microglobulin/bikunin precursor, trafficking protein particle complex subunit 3, pigment epithelium-derived factor, tumour necrosis factor ligand superfamily member 15, ubiquitin-conjugating enzyme E2 G2, reticulon-4 receptor, insulin, cartilage intermediate layer protein 2 and apolipoprotein M. Of these, apolipoprotein M was found to mediate 72% of the association between diabetes and the risk of cardiovascular death, aborted cardiac arrest and HF hospitalisation.¹⁶¹

The use of SomaScan technology showed that patients with HFrEF, HF with mid-range ejection fraction (HFmrEF), and HFpEF had unique variations in circulating proteins which reflected distinct biological pathophysiologies. Bioinformatics analysis revealed biological themes that were unique to HFrEF, HFpEF and HFmrEF patients, suggesting that it may be possible to use proteomics assays to more accurately predict clinical phenotypes of HF patients.¹⁶² Further research is needed to validate these results and translate the proteomic data to the bedside.

The use of machine-learning algorithms applied to a wide range of biomarkers in HFpEF cohorts has identified several clusters with different cardiovascular phenotypes and outcomes.^{163,164}

Conclusion

The pathophysiological basis for identifying and classifying HFpEF based on a multimarker strategy seems logical and deserves further research. A cardiac-centred approach to HFpEF diagnosis using NPs is a good starting point, and is actually promoted by the Heart Failure Association

through the 'Peptide for Life' initiative.¹⁶⁵ However, a holistic approach including biomarkers that provide information on non-cardiac components of the HFpEF syndrome may enrich our understanding of the disease and may be useful in classifying HFpEF phenotypes/endotypes that may guide patient selection in HFpEF trials (Figure 1).¹⁶⁶ Because of the risk of bias in current HFpEF biomarker studies, methodologically well-designed studies with a uniform reference diagnosis are urgently needed to determine the incremental value of circulating biomarkers for the diagnosis of HFpEF.¹⁶⁷ □

- McDonagh TA, Metra M, Adamo M, et al. 2021 ESC guidelines for the diagnosis and treatment of acute and chronic heart failure. *Eur Heart J* 2021;42:3599–726. <https://doi.org/10.1093/eurheartj/ehab368>; PMID: 34447992.
- Maisel AS, Duran JM, Wettersten N. Natriuretic peptides in heart failure: atrial and B-type natriuretic peptides. *Heart Fail Clin* 2018;14:13–25. <https://doi.org/10.1016/j.hfc.2017.08.002>; PMID: 29153197.
- Vanderheyden M, Bartunek J, Goethals M. Brain and other natriuretic peptides: molecular aspects. *Eur J Heart Fail* 2004;6:261–8. <https://doi.org/10.1016/j.ejheart.2004.01.004>; PMID: 14987574.
- Maeda K, Tsutamoto T, Wada A, et al. Plasma brain natriuretic peptide as a biochemical marker of high left ventricular end-diastolic pressure in patients with symptomatic left ventricular dysfunction. *Am Heart J* 1998;135:825–32. [https://doi.org/10.1016/S0002-8703\(98\)70041-9](https://doi.org/10.1016/S0002-8703(98)70041-9); PMID: 9588412.
- Brunner-La Rocca HP, Sanders-van Wijk S. Natriuretic peptides in chronic heart failure. *Card Fail Rev* 2019;5:44–9. <https://doi.org/10.15420/cfr.2018.26.1>; PMID: 30847245.
- Troughton RW, Richards AM. B-type natriuretic peptides and echocardiographic measures of cardiac structure and function. *JACC Cardiovasc Imaging* 2009;2:216–25. <https://doi.org/10.1016/j.jcmg.2008.12.006>; PMID: 19356559.
- Remmelzwaal S, van Ballegoijen AJ, Schoonmade LJ, et al. Natriuretic peptides for the detection of diastolic dysfunction and heart failure with preserved ejection fraction—a systematic review and meta-analysis. *BMC Med* 2020;18:290. <https://doi.org/10.1186/s12916-020-01764-x>; PMID: 33121502.
- Moliner P, Lupón J, Barallat J, et al. Bio-profiling and bio-prognostication of chronic heart failure with mid-range ejection fraction. *Int J Cardiol* 2018;257:188–92. <https://doi.org/10.1016/j.ijcard.2018.01.119>; PMID: 29415801.
- Januzzi JL, van Kimmenade R, Lainchbury J, et al. NT-proBNP testing for diagnosis and short-term prognosis in acute destabilized heart failure: an international pooled analysis of 1,256 patients - the International Collaborative of NT-proBNP Study. *Eur Heart J* 2006;27:330–7. <https://doi.org/10.1093/eurheartj/ehi631>; PMID: 16293638.
- Garg A, Virmani D, Agrawal S, et al. Clinical application of Biomarkers in Heart failure with a preserved ejection fraction: a review. *Cardiology* 2017;136:192–203. <https://doi.org/10.1159/000450573>; PMID: 27784010.
- Obokata M, Reddy YNV, Pislaru SV, et al. Evidence supporting the existence of a distinct obese phenotype of heart failure with preserved ejection fraction. *Circulation* 2017;136:6–19. <https://doi.org/10.1161/CIRCULATIONAHA.116.026807>; PMID: 28381470.
- Anjan VY, Loftus TM, Burke MA, et al. Prevalence, clinical phenotype, and outcomes associated with normal B-type natriuretic peptide levels in heart failure with preserved ejection fraction. *Am J Cardiol* 2012;110:870–6. <https://doi.org/10.1016/j.amjcard.2012.05.014>; PMID: 22681864.
- Santhanakrishnan R, Chong JP, Ng TP, et al. Growth differentiation factor 15, ST2, high-sensitivity troponin T, and N-terminal pro brain natriuretic peptide in heart failure with preserved vs. reduced ejection fraction. *Eur J Heart Fail* 2012;14:1338–47. <https://doi.org/10.1093/eurjhf/hfs130>; PMID: 22869458.
- Woolley RJ, Ceelen D, Ouwkerk W, et al. Machine learning based on biomarker profiles identifies distinct subgroups of heart failure with preserved ejection fraction. *Eur J Heart Fail* 2021;23:983–91. <https://doi.org/10.1002/ehfj.2144>; PMID: 33651430.
- Lopuszynski JB, Downing AJ, Finley CM, Zahid M. Prognosticators of all-cause mortality in patients with heart failure with preserved ejection fraction. *Am J Cardiol* 2021;158:66–73. <https://doi.org/10.1016/j.amjcard.2021.07.044>; PMID: 34465456.
- Kociol RD, Horton JR, Fonarow GC, et al. Admission, discharge, or change in B-type natriuretic peptide and long-term outcomes: data from Organized Program to Initiate Lifesaving Treatment in Hospitalized Patients with Heart Failure (OPTIMIZE-HF) linked to Medicare claims. *Circ Heart Fail* 2011;4:628–36. <https://doi.org/10.1161/CIRCHEARTFAILURE.111.962290>; PMID: 21743005.
- Salah K, Stienen S, Pinto YM, et al. Prognosis and NT-proBNP in heart failure patients with preserved versus reduced ejection fraction. *Heart* 2019;105:1182–9. <https://doi.org/10.1136/heartjnl-2018-314173>; PMID: 30962192.
- Troughton R, Felker GM, Januzzi JL Jr. Natriuretic peptide-guided heart failure management. *Eur Heart J* 2014;35:16–24. <https://doi.org/10.1093/eurheartj/ehu463>; PMID: 24216390.
- Pfisterer M, Buser P, Rickli H, et al. BNP-guided vs symptom-guided heart failure therapy: the Trial of Intensified vs Standard Medical Therapy in Elderly Patients with Congestive Heart Failure (TIME-CHF) randomized trial. *JAMA* 2009;301:383–92. <https://doi.org/10.1001/jama.2009.2>; PMID: 19176440.
- Anand IS, Claggett B, Liu J, et al. Interaction between spironolactone and natriuretic peptides in patients with heart failure and preserved ejection fraction: from the TOPCAT trial. *JACC Heart Fail* 2017;5:241–52. <https://doi.org/10.1016/j.jchf.2016.11.015>; PMID: 28359411.
- Cunningham JW, Vaduganathan M, Claggett BL, et al. Effects of sacubitril/valsartan on N-terminal pro-B-type natriuretic peptide in heart failure with preserved ejection fraction. *JACC Heart Fail* 2020;8:372–81. <https://doi.org/10.1016/j.jchf.2020.03.002>; PMID: 32241619.
- Erdős EG, Skidgel RA. Neutral endopeptidase 24.11 (enkephalinase) and related regulators of peptide hormones. *FASEB J* 1989;3:145–51. <https://doi.org/10.1096/fasebj.3.2.2521610>; PMID: 28829510.
- Bayes-Genis A, Barallat J, Galan A, et al. Soluble neprilysin is predictive of cardiovascular death and heart failure hospitalization in heart failure patients. *J Am Coll Cardiol* 2015;65:657–65. <https://doi.org/10.1016/j.jacc.2014.11.048>; PMID: 25677426.
- Núñez J, Núñez E, Barallat J, et al. Serum neprilysin and recurrent admissions in patients with heart failure. *J Am Heart Assoc* 2017;6:e005712. <https://doi.org/10.1161/JAHA.117.005712>; PMID: 28862951.
- Bayes-Genis A, Barallat J, Pascual-Figal D, et al. Prognostic value and kinetics of soluble neprilysin in acute heart failure. A Pilot study. *JACC Heart Fail* 2015;3:641–4. <https://doi.org/10.1016/j.jchf.2015.03.006>; PMID: 26251092.
- Núñez J, Núñez E, Miñana G, et al. Serum neprilysin and recurrent hospitalizations after acute heart failure. *Int J Cardiol* 2016;220:742–4. <https://doi.org/10.1016/j.ijcard.2016.06.271>; PMID: 27393859.
- Goliashch G, Pavo N, Zotter-Tufaro C, et al. Soluble neprilysin does not correlate with outcome in heart failure with preserved ejection fraction. *Eur J Heart Fail* 2016;18:89–93. <https://doi.org/10.1002/ehfj.435>; PMID: 26725876.
- Bayes-Genis A, Barallat J, Lupón J. Soluble neprilysin does not correlate with outcome in heart failure with preserved ejection fraction? *Eur J Heart Fail* 2016;18:576. <https://doi.org/10.1002/ehfj.538>; PMID: 27135772.
- Lyle MA, Iyer SR, Redfield MM, et al. Circulating neprilysin in patients with heart failure and preserved ejection fraction. *JACC Heart Fail* 2020;8:70–80. <https://doi.org/10.1016/j.jchf.2019.07.005>; PMID: 31392960.
- Bayes-Genis A, Barallat J, Richards AM. A test in context: neprilysin: function, inhibition, and biomarker. *J Am Coll Cardiol* 2016;68:639–53. <https://doi.org/10.1016/j.jacc.2016.04.060>; PMID: 27491909.
- Bayes-Genis A, Prickett TC, Richards AM, et al. Soluble neprilysin retains catalytic activity in heart failure. *J Heart Lung Transplant* 2016;35:684–5. <https://doi.org/10.1016/j.healun.2015.12.015>; PMID: 26830756.
- Reddy YNV, Iyer SR, Scott CG, et al. Soluble neprilysin in the general population: clinical determinants and its relationship to cardiovascular disease. *J Am Heart Assoc* 2019;8:e012943. <https://doi.org/10.1161/JAHA.119.012943>; PMID: 31345101.
- Lupón J, Santiago-Vacas E, Cediél G, et al. Circulating neprilysin hypothesis: a new opportunity for sacubitril/valsartan in patients with heart failure and preserved ejection fraction? *PLoS One* 2021;16:e0249674. <https://doi.org/10.1371/journal.pone.0249674>; PMID: 33989294.
- Gori M, Senni M, Metra M. High-sensitive cardiac troponin for prediction of clinical heart failure: are we ready for prime time? *Circulation* 2017;135:1506–8. <https://doi.org/10.1161/CIRCULATIONAHA.117.027681>; PMID: 28416522.
- Januzzi JL Jr, Filippatos G, Nieminen M, Gheorghiadu M. Troponin elevation in patients with heart failure, on behalf of the third Universal Definition of Myocardial Infarction Global Task Force: Heart Failure Section. *Eur Heart J* 2012;33:2265–71. <https://doi.org/10.1093/eurheartj/ehs191>; PMID: 22745356.
- Pandey A, Golwala H, Sheng S, et al. Factors associated with and prognostic implications of cardiac troponin elevation in decompensated heart failure with preserved ejection fraction: findings from the American Heart Association Get with the Guidelines-Heart Failure Program. *JAMA Cardiol* 2017;2:136–45. <https://doi.org/10.1001/jamacardio.2016.4726>; PMID: 28030747.
- Obokata M, Reddy YNV, Melenovsky V, et al. Myocardial injury and cardiac reserve in patients with heart failure and preserved ejection fraction. *J Am Coll Cardiol* 2018;72:29–40. <https://doi.org/10.1016/j.jacc.2018.04.039>; PMID: 29957229.
- Brouwers FP, van Gilst WH, Damman K, et al. Clinical risk stratification optimizes value of biomarkers to predict new-onset heart failure in a community-based cohort. *Circ Heart Fail* 2014;7:723–31. <https://doi.org/10.1161/CIRCHEARTFAILURE.114.001185>; PMID: 25057112.
- Seliger SL, de Lemos J, Neeland IJ, et al. Older adults, "malignant" left ventricular hypertrophy, and associated cardiac-specific biomarker phenotypes to identify the differential risk of new-onset reduced versus preserved ejection fraction heart failure: CHS (Cardiovascular Health Study). *JACC Heart Fail* 2015;3:445–55. <https://doi.org/10.1016/j.jchf.2014.12.018>; PMID: 25982111.
- Thawabi M, Hawatmeh A, Studyvin S, et al. Cardiac troponin and outcome in decompensated heart failure with preserved ejection fraction. *Cardiovasc Diagn Ther* 2017;7:359–66. <https://doi.org/10.21037/cdt.2017.03.17>; PMID: 28890872.
- Pandey A, Golwala H, Sheng S, et al. Factors associated with and prognostic implications of cardiac troponin elevation in decompensated heart failure with ejection fraction: findings from the American Heart Association Get with the Guidelines-Heart Failure Program. *JAMA Cardiol* 2017;2:136–45. <https://doi.org/10.1001/jamacardio.2016.4726>; PMID: 28030747.
- Suzuki S, Motoki H, Minamisawa M, et al. Prognostic significance of high-sensitivity cardiac troponin in patients with heart failure with preserved ejection fraction. *Heart Vessels* 2019;34:1650–6. <https://doi.org/10.1007/s00380-019-01393-2>; PMID: 30929038.
- Gohar A, Chong JPC, Liew OW, et al. The prognostic value of highly sensitive cardiac troponin assays for adverse events in men and women with stable heart failure and a preserved vs. reduced ejection fraction. *Eur J Heart Fail* 2017;19:1638–47. <https://doi.org/10.1002/ehfj.911>; PMID: 28849609.
- Gori M, Senni M, Claggett B, et al. Integrating high-sensitivity troponin T and Sacubitril/Valsartan treatment in HFpEF: the Paragon-HF trial. *JACC Heart Fail* 2021;9:627–35. <https://doi.org/10.1016/j.jchf.2021.04.009>; PMID: 34246603.
- Verma S, Li SH, Badiwala MV, et al. Endothelin antagonism and interleukin-6 inhibition attenuate the proatherogenic effects of C-reactive protein. *Circulation* 2002;105:1890–6. <https://doi.org/10.1161/01.CIR.0000015126.83143.B4>; PMID: 11997273.
- Verma S, Wang CH, Li SH, et al. A self-fulfilling prophecy: C-reactive protein attenuates nitric oxide production and inhibits angiogenesis. *Circulation* 2002;106:913–9. <https://doi.org/10.1161/01.CIR.0000029802.88087.5E>; PMID: 12186793.

47. Pasceri V, Willerson JT, Yeh ET. Direct proinflammatory effect of C-reactive protein on human endothelial cells. *Circulation* 2000;102:2165–8. <https://doi.org/10.1161/01.CIR.102.18.2165>; PMID: 11056086.
48. DuBrock HM, AbouEzzeddine OF, Redfield MM. High-sensitivity C-reactive protein in heart failure with preserved ejection fraction. *PLoS One* 2018;13:e0201836. <https://doi.org/10.1371/journal.pone.0201836>; PMID: 30114262.
49. Matsubara J, Sugiyama S, Nozaki T, et al. PENTRAXIN 3 is a new inflammatory marker correlated with left ventricular diastolic dysfunction and heart failure with normal ejection fraction. *J Am Coll Cardiol* 2011;57:861–9. <https://doi.org/10.1016/j.jacc.2010.10.018>; PMID: 21310324.
50. Everett BM, Cornel JH, Lainscak M, et al. Anti-inflammatory therapy with canakinumab for the prevention of hospitalization for heart failure. *Circulation* 2019;139:1289–99. <https://doi.org/10.1161/CIRCULATIONAHA.118.038010>; PMID: 30586730.
51. Abbate A, Toldo S, Marchetti C, et al. Interleukin-1 and the inflammasome as therapeutic targets in cardiovascular disease. *Circ Res* 2020;126:1260–80. <https://doi.org/10.1161/CIRCRESAHA.120.315937>; PMID: 32324502.
52. Van Tassel BW, Trankle CR, Canada JM, et al. IL-1 blockade in patients with heart failure with preserved ejection fraction. *Circ Heart Fail* 2018;11:e005036. <https://doi.org/10.1161/CIRCHEARTFAILURE.118.005036>; PMID: 30354558.
53. Bayés-Genis A, González A, Lupón J. ST2 in heart failure. *Circ Heart Fail* 2018;11:e005582. <https://doi.org/10.1161/CIRCHEARTFAILURE.118.005582>; PMID: 30562100.
54. van Vark LC, Lesman-Leegte I, Baart SJ, et al. Prognostic value of serial ST2 measurements in patients with acute heart failure. *J Am Coll Cardiol* 2017;70:2378–88. <https://doi.org/10.1016/j.jacc.2017.09.026>; PMID: 29096809.
55. AbouEzzeddine OF, McKie PM, Dunlay SM, et al. Suppression of tumorigenicity 2 in heart failure with preserved ejection fraction. *J Am Heart Assoc* 2017;6:e004382. <https://doi.org/10.1161/JAHA.116.004382>; PMID: 28214792.
56. Wollert KC, Kempf T. Growth differentiation factor 15 in heart failure: an update. *Curr Heart Fail Rep* 2012;9:337–45. <https://doi.org/10.1007/s11897-012-0113-9>; PMID: 22961192.
57. Chan MM, Santhanakrishnan R, Chong JP, et al. Growth differentiation factor 15 in heart failure with preserved vs. reduced ejection fraction. *Eur J Heart Fail* 2016;18:81–8. <https://doi.org/10.1002/ehfj.431>; PMID: 26497848.
58. Wang TJ, Larson MG, Benjamin EJ, et al. Clinical and echocardiographic correlates of plasma procollagen type III amino-terminal peptide levels in the community. *Am Heart J* 2007;154:291–7. <https://doi.org/10.1016/j.ahj.2007.04.006>; PMID: 17643579.
59. Lombardi R, Betocchi S, Losi MA, et al. Myocardial collagen turnover in hypertrophic cardiomyopathy. *Circulation* 2003;108:1455–60. <https://doi.org/10.1161/01.CIR.0000090687.97972.10>; PMID: 12952838.
60. Zannad F, Alla F, Dousset B, et al. Limitation of excessive extracellular matrix turnover may contribute to survival benefit of spironolactone therapy in patients with congestive heart failure: insights from the randomized Aldactone evaluation study (RALES). Rales Investigators. *Circulation* 2000;102:2700–6. <https://doi.org/10.1161/01.CIR.102.22.2700>; PMID: 11094035.
61. Trippel TD, Van Linthout S, Westermann D, et al. Investigating a biomarker-driven approach to target collagen turnover in diabetic heart failure with preserved ejection fraction patients. Effect of torsemide versus furosemide on serum C-terminal propeptide of procollagen type I (DROP-PIP trial). *Eur J Heart Fail* 2018;20:460–70. <https://doi.org/10.1002/ehfj.960>; PMID: 28891228.
62. Van Lint P, Libert C. Chemokine and cytokine processing by matrix metalloproteinases and its effect on leukocyte migration and inflammation. *J Leukoc Biol* 2007;82:1375–81. <https://doi.org/10.1189/jlb.0607338>; PMID: 17709402.
63. Krebber MM, van Dijk CGM, Vermooij RWM, et al. Matrix metalloproteinases and tissue inhibitors of metalloproteinases in extracellular matrix remodeling during left ventricular diastolic dysfunction and heart failure with preserved ejection fraction: a systematic review and meta-analysis. *Int J Mol Sci* 2020;21:6742. <https://doi.org/10.3390/ijms21186742>; PMID: 32937927.
64. Cunningham JW, Claggett BL, O'Meara E, et al. Effect of Sacubitril/Valsartan on biomarkers of extracellular matrix regulation in patients with HFpEF. *J Am Coll Cardiol* 2020;76:503–14. <https://doi.org/10.1016/j.jacc.2020.05.072>; PMID: 32731928.
65. Sharma UC, Pokharel S, van Brakel TJ, et al. Galectin-3 marks activated macrophages in failing-prone hypertrophied hearts and contributes to cardiac dysfunction. *Circulation* 2004;110:3121–8. <https://doi.org/10.1161/01.CIR.0000147181.65298.4D>; PMID: 15520318.
66. de Boer RA, Voors AA, Muntendam P, et al. Galectin-3: a novel mediator of heart failure development and progression. *Eur J Heart Fail* 2009;11:811–7. <https://doi.org/10.1093/eurjhf/hfp097>; PMID: 19648160.
67. Calvier L, Miana M, Reboul P, et al. Galectin-3 mediates aldosterone-induced vascular fibrosis. *Arterioscler Thromb Vasc Biol* 2013;33:67–75. <https://doi.org/10.1161/ATVBAHA.112.300569>; PMID: 23117656.
68. Yu L, Ruifrok WP, Meissner M, et al. Genetic and pharmacological inhibition of galectin-3 prevents cardiac remodeling by interfering with myocardial fibrogenesis. *Circ Heart Fail* 2013;6:107–17. <https://doi.org/10.1161/CIRCHEARTFAILURE.112.971168>; PMID: 23230309.
69. van Kimmenade RR, Januzzi Jr JL, Ellinor PT, et al. Utility of amino terminal pro-brain natriuretic peptide, galectin-3, and apelin for the evaluation of patients with acute heart failure. *J Am Coll Cardiol* 2006;48:1217–24. <https://doi.org/10.1016/j.jacc.2006.03.061>; PMID: 16979009.
70. Lok DJ, Van Der Meer P, de la Porte PW, et al. Prognostic value of galectin-3, a novel marker of fibrosis, in patients with chronic heart failure: data from the DEAL-HF study. *Clin Res Cardiol* 2010;99:323–8. <https://doi.org/10.1007/s00392-010-0125-y>; PMID: 20130888.
71. de Boer RA, Lok DJ, Jaarsma T, et al. Predictive value of plasma galectin-3 levels in heart failure with reduced and preserved ejection fraction. *Ann Med* 2011;43:60–8. <https://doi.org/10.3109/07853890.2010.538080>; PMID: 21189092.
72. Felker GM, Fuizat M, Shaw LK, et al. Galectin-3 in ambulatory patients with heart failure: results from the HF-ACTION study. *Circ Heart Fail* 2012;5:72–8. <https://doi.org/10.1161/CIRCHEARTFAILURE.111.963637>; PMID: 22016505.
73. Zamora E, Lupón J, de Antonio M, et al. Renal function largely influences galectin-3 prognostic value in heart failure. *Int J Cardiol* 2014;177:171–7. <https://doi.org/10.1016/j.ijcard.2014.09.011>; PMID: 25499371.
74. Anand IS, Rector TS, Kuskowski M, et al. Baseline and serial measurements of galectin-3 in patients with heart failure: relationship to prognosis and effect of treatment with valsartan in the Val-HeFT. *Eur J Heart Fail* 2013;15:511–8. <https://doi.org/10.1093/eurjhf/hfs205>; PMID: 23291728.
75. van der Velde AR, Gullestad L, Ueland T, et al. Prognostic value of changes in galectin-3 levels over time in patients with heart failure: data from CORONA and COACH. *Circ Heart Fail* 2013;6:219–26. <https://doi.org/10.1161/CIRCHEARTFAILURE.112.000129>; PMID: 23395934.
76. French B, Wang L, Ky B, et al. Prognostic value of galectin-3 for adverse outcomes in chronic heart failure. *J Card Fail* 2016;22:256–62. <https://doi.org/10.1016/j.cardfail.2015.10.022>; PMID: 26571149.
77. de Boer RA, Edelmann F, Cohen-Solal A, et al. Galectin-3 in heart failure with preserved ejection fraction. *Eur J Heart Fail* 2013;15:1095–101. <https://doi.org/10.1093/eurjhf/hft077>; PMID: 23650131.
78. Meijers WC, de Boer RA, van Veldhuisen DJ, et al. Biomarkers and low risk in heart failure. Data from COACH and TRIUMPH. *Eur J Heart Fail* 2015;17:1271–82. <https://doi.org/10.1002/ehfj.407>; PMID: 26466857.
79. Ghimire K, Altmann HM, Straub AC, Isenberg JS. Nitric oxide: what's new to NO? *Am J Physiol Cell Physiol* 2017;312:C254–62. <https://doi.org/10.1152/ajpcell.00315.2016>; PMID: 27974299.
80. van Heerebeek L, Hamdani N, Falcão-Pires I, et al. Low myocardial protein kinase G activity in heart failure with preserved ejection fraction. *Circulation* 2012;126:830–9. <https://doi.org/10.1161/CIRCULATIONAHA.111.076075>; PMID: 22806632.
81. Zamani P, French B, Brandimarto JA, et al. Effect of heart failure with preserved ejection fraction on nitric oxide metabolites. *Am J Cardiol* 2016;118:1855–60. <https://doi.org/10.1016/j.amjcard.2016.08.077>; PMID: 27742422.
82. Chirinos JA, Akers SR, Trieu L, et al. Heart failure, left ventricular remodeling, and circulating nitric oxide metabolites. *J Am Heart Assoc* 2016;5:e004133. <https://doi.org/10.1161/JAHA.116.004133>; PMID: 27742619.
83. Paulus WJ, Tschope C. A novel paradigm for heart failure with preserved ejection fraction: comorbidities drive myocardial dysfunction and remodeling through coronary microvascular endothelial inflammation. *J Am Coll Cardiol* 2013;62:263–71. <https://doi.org/10.1016/j.jacc.2013.02.092>; PMID: 23684677.
84. Mátyás C, Németh BT, Oláh A, et al. Prevention of the development of heart failure with preserved ejection fraction by the phosphodiesterase-5A inhibitor vardenafil in rats with type 2 diabetes. *Eur J Heart Fail* 2017;19:326–36. <https://doi.org/10.1002/ehfj.711>; PMID: 27995696.
85. Redfield MM, Anstrom KJ, Levine JA, et al. Isosorbide mononitrate in heart failure with preserved ejection fraction. *N Engl J Med* 2015;373:2314–24. <https://doi.org/10.1056/NEJMoa1510774>; PMID: 26549714.
86. Zamani P, Rawat D, Shiva-Kumar P, et al. Effect of inorganic nitrate on exercise capacity in heart failure with preserved ejection fraction. *Circulation* 2015;131:371–800. <https://doi.org/10.1161/CIRCULATIONAHA.114.012957>; PMID: 25533966.
87. Borlaug BA, Anstrom KJ, Lewis GD, et al. Effect of inorganic nitrite vs placebo on exercise capacity among patients with heart failure with preserved ejection fraction: the INDIE-HFpEF randomized clinical trial. *JAMA* 2018;320:1764–73. <https://doi.org/10.1001/jama.2018.14852>; PMID: 30398602.
88. Wang H, Anstrom K, Ilkayeva O, et al. Sildenafil treatment in heart failure with preserved ejection fraction: targeted metabolomic profiling in the RELAX trial. *JAMA Cardiol* 2017;2:896–901. <https://doi.org/10.1001/jamacardio.2017.1239>; PMID: 28492915.
89. Schiattarella GG, Altamirano F, Tong D, et al. Nitrosative stress drives heart failure with preserved ejection fraction. *Nature* 2019;568:351–6. <https://doi.org/10.1038/s41586-019-1100-z>; PMID: 30971818.
90. Nishikimi T, Kuwahara K, Nakagawa Y, et al. Adrenomedullin in cardiovascular disease: a useful biomarker, its pathological roles and therapeutic application. *Curr Protein Pept Sci* 2013;14:256–67. <https://doi.org/10.2174/13892037113149990045>; PMID: 23745694.
91. Yim J, Cho H, Rabkin SW. Gene expression and gene associations during the development of heart failure with preserved ejection fraction in the Dahl salt sensitive model of hypertension. *Clin Exp Hypertens* 2018;40:155–66. <https://doi.org/10.1080/10641963.2017.1346113>; PMID: 29140729.
92. Hage C, Michaësson E, Linde C, et al. Inflammatory biomarkers predict heart failure severity and prognosis in patients with heart failure with preserved ejection fraction: A holistic proteomic approach. *Circ Cardiovasc Genet* 2017;10:e001633. <https://doi.org/10.1161/CIRCGENETICS.116.001633>; PMID: 28100627.
93. Stahrenberg R, Duvigne A, Mende M, et al. Determinants of submaximal exercise capacity in patients at risk for heart failure with preserved ejection fraction – results from the DIAST-CHF study. *ESC Heart Fail* 2015;2:76–84. <https://doi.org/10.1002/ehf2.12034>; PMID: 28834659.
94. Obokata M, Kane GC, Reddy YNV, et al. The neurohormonal basis of pulmonary hypertension in heart failure with preserved ejection fraction. *Eur Heart J* 2019;40:3707–17. <https://doi.org/10.1093/eurheartj/ehz626>; PMID: 31513270.
95. Kresoja KP, Rommel KP, Wachter R, et al. Proteomics to improve phenotyping in obese patients with heart failure with preserved ejection fraction. *Eur J Heart Fail* 2021;23:1633–44. <https://doi.org/10.1002/ehfj.2291>; PMID: 34231954.
96. Gegei I, Krämer BK, Scharnagl H, et al. Renal function, N-terminal pro-B-type natriuretic peptide, propeptide big-endothelin and patients with heart failure and preserved ejection fraction. *Peptides* 2019;111:112–7. <https://doi.org/10.1016/j.peptides.2018.04.003>; PMID: 29684593.
97. Bevan GH, Jenkins T, Josephson R, et al. Endothelin-1 and peak oxygen consumption in patients with heart failure with preserved ejection fraction. *Heart Lung* 2021;50:442–6. <https://doi.org/10.1016/j.hrtlng.2021.02.004>; PMID: 33636416.
98. Chowdhury MA, Moukarbel GV, Gupta R, et al. Endothelin 1 is associated with heart failure hospitalization and long-term mortality in patients with heart failure with preserved ejection fraction and pulmonary hypertension. *Cardiology* 2019;143:124–33. <https://doi.org/10.1159/000501100>; PMID: 31514181.
99. Valero-Munoz M, Li S, Wilson RM, et al. Dual endothelin-A/endothelin-B receptor blockade and cardiac remodeling in heart failure with preserved ejection fraction. *Circ Heart Fail* 2016;9:e003381. <https://doi.org/10.1161/CIRCHEARTFAILURE.116.003381>; PMID: 27810862.
100. Zile MR, Bourge RC, Redfield MM, et al. Randomized, double-blind, placebo-controlled study of sitaxsentan to improve impaired exercise tolerance in patients with heart failure and a preserved ejection fraction. *JACC Heart Fail* 2014;2:123–30. <https://doi.org/10.1016/j.jchf.2013.12.002>; PMID: 24720918.
101. Vaughan DE. PAI-1 and atherothrombosis. *J Thromb Haemost* 2005;3:1879–83. <https://doi.org/10.1111/j.1538-7836.2005.01420.x>; PMID: 16102055.
102. Jug B, Vene N, Salobir BG, et al. Procoagulant state in heart failure with preserved left ventricular ejection fraction. *Int Heart J* 2009;50:591–600. <https://doi.org/10.1536/ihj.50.591>; PMID: 19809208.
103. de Boer RA, Naylor M, deFilippi CR, et al. Association of cardiovascular biomarkers with incident heart failure with preserved and reduced ejection fraction. *JAMA Cardiol* 2018;3:215–24. <https://doi.org/10.1001/jamacardio.2017.4987>; PMID: 29322198.
104. Winter MP, Kleber ME, Koller L, et al. Prognostic significance of tPA/PAI-1 complex in patients with heart failure and preserved ejection fraction. *Thromb Haemost* 2017;117:471–8. <https://doi.org/10.1160/TH16-08-0600>; PMID: 27975104.
105. Sanders-van Wijk S, Tromp J, Beussink-Nelson L, et al.

- Proteomic evaluation of the comorbidity-inflammation paradigm in heart failure with preserved ejection fraction: results from the PROMIS-HFPEF study. *Circulation* 2020;142:2029–44. <https://doi.org/10.1161/CIRCULATIONAHA.120.045810>; PMID: 33034202.
106. Sabbah MS, Fayyaz AU, de Denus S, et al. Obese-inflammatory phenotypes in heart failure with preserved ejection fraction. *Circ Heart Fail* 2020;13:e006414. <https://doi.org/10.1161/CIRCHEARTFAILURE.119.006414>; PMID: 32809874.
 107. Gandhi PU, Chow SL, Rector TS, et al. Prognostic value of insulin-like growth factor-binding protein 7 in patients with heart failure and preserved ejection fraction. *J Card Fail* 2017;23:20–8. <https://doi.org/10.1016/j.cardfail.2016.06.006>; PMID: 27317843.
 108. Hage C, Bjerre M, Frystyk J, et al. Comparison of prognostic usefulness of serum insulin-like growth factor-binding Protein 7 in patients with heart failure and preserved versus reduced left ventricular ejection fraction. *Am J Cardiol* 2018;121:1558–66. <https://doi.org/10.1016/j.amjcard.2018.02.041>; PMID: 29622288.
 109. Januzzi JL Jr, Packer M, Claggett B, et al. IGFBP7 (insulin-like growth factor-binding protein-7) and neprilysin inhibition in patients with heart failure. *Circ Heart Fail* 2018;11:e005133. <https://doi.org/10.1161/CIRCHEARTFAILURE.118.005133>; PMID: 30354399
 110. Gandhi PU, Gaggini HK, Redfield MM, et al. Insulin-like growth factor-binding protein-7 as a biomarker of diastolic dysfunction and functional capacity in heart failure with preserved ejection fraction: results from the RELAX trial. *JACC Heart Fail* 2016;4:860–9. <https://doi.org/10.1016/j.jchf.2016.08.002>; PMID: 27744089.
 111. Barroso MC, Kramer F, Greene SJ, et al. Serum insulin-like growth factor-1 and its binding protein-7: potential novel biomarkers for heart failure with preserved ejection fraction. *BMC Cardiovasc Disord* 2016;16:199. <https://doi.org/10.1186/s12872-016-0376-2>; PMID: 27769173.
 112. Furuhashi M, Ishimura S, Ota H, Miura T. Lipid chaperones and metabolic inflammation. *Int J Inflamm* 2011;2011:642612. <https://doi.org/10.4061/2011/642612>; PMID: 22121495.
 113. Furuhashi M, Saitoh S, Shimamoto K, Miura T. Fatty acid-binding protein 4 (FABP4): pathophysiological insights and potential clinical biomarker of metabolic and cardiovascular diseases. *Clin Med Insights Cardiol* 2014;8(Suppl 3):23–33. <https://doi.org/10.4137/CMC.S17067>; PMID: 25674026.
 114. Harada T, Sunaga H, Sorimachi H, et al. Pathophysiological role of fatty acid-binding protein 4 in Asian patients with heart failure and preserved ejection fraction. *ESC Heart Fail* 2020;7:4256–66. <https://doi.org/10.1002/ehf2.13071>; PMID: 33140584.
 115. Hotamisligil GS, Johnson RS, Distel RJ, et al. Uncoupling of obesity from insulin resistance through a targeted mutation in aP2, the adipocyte fatty acid binding protein. *Science* 1996;274:1377–9. <https://doi.org/10.1126/science.274.5291.1377>; PMID: 8910278.
 116. Chirinos JA, Orlenko A, Zhao L, et al. Multiple plasma biomarkers for risk stratification in patients with heart failure and preserved ejection fraction. *J Am Coll Cardiol* 2020;75:1281–95. <https://doi.org/10.1016/j.jacc.2019.12.069>; PMID: 32192654.
 117. Barouch LA, Berkowitz DE, Harrison RW, et al. Disruption of leptin signaling contributes to cardiac hypertrophy independently of body weight in mice. *Circulation* 2003;108:754–9. <https://doi.org/10.1161/01.CIR.0000083716.82622.FD>; PMID: 12885755.
 118. Alex L, Russo I, Holoborodko V, Frangogiannis NG. Characterization of a mouse model of obesity-related fibrotic cardiomyopathy that recapitulates features of human heart failure with preserved ejection fraction. *Am J Physiol Heart Circ Physiol* 2018;315:H934–49. <https://doi.org/10.1152/ajpheart.00238.2018>; PMID: 30004258.
 119. Packer M. Do sodium-glucose co-transporter-2 inhibitors prevent heart failure with a preserved ejection fraction by counterbalancing the effects of leptin? A novel hypothesis. *Diabetes Obes Metab* 2018;20:1361–66. <https://doi.org/10.1111/diob.13229>; PMID: 29359851.
 120. Faxén UL, Hage C, Andreasson A, et al. HFpEF and HFrEF exhibit different phenotypes as assessed by leptin and adiponectin. *Int J Cardiol* 2017;228:709–16. <https://doi.org/10.1016/j.ijcard.2016.11.194>; PMID: 27886615.
 121. Tomas E, Tsao TS, Saha AK, et al. Enhanced muscle fat oxidation and glucose transport by ACRP30 globular domain: acetyl-CoA carboxylase inhibition and AMP-activated protein kinase activation. *Proc Natl Acad Sci U S A* 2002;99:16309–13. <https://doi.org/10.1073/pnas.222657499>; PMID: 12456889.
 122. Beltowski J. Adiponectin and resistin-new hormones of white adipose tissue. *Med Sci Monit* 2003;9:RA55–61. PMID: 12601307.
 123. Mado H, Szczurek W, Gąsior M, Szygula-Jurkiewicz B. Adiponectin in heart failure. *Future Cardiol* 2021;17:757–64. <https://doi.org/10.2217/fca-2020-0095>; PMID: 32915067.
 124. Tanaka K, Wilson RM, Essick EE, et al. Effects of adiponectin on calcium-handling proteins in heart failure with preserved ejection fraction. *Circ Heart Fail* 2014;7:976–85. <https://doi.org/10.1161/CIRCHEARTFAILURE.114.001279>; PMID: 25149095.
 125. Szabó T, Scherbakov N, Sandek A, et al. Plasma adiponectin in heart failure with and without cachexia: catabolic signal linking catabolism, symptomatic status, and prognosis. *Nutr Metab Cardiovasc Dis* 2014;24:50–6. <https://doi.org/10.1016/j.numecd.2013.04.015>; PMID: 23791298.
 126. Bhalla V, Kaloogeropoulos A, Georgiopoulou V, Butler J. Serum resistin: physiology, pathophysiology and implications for heart failure. *Biomark Med* 2010;4:445–52. <https://doi.org/10.2217/bmm.10.17>; PMID: 20550478.
 127. Stepan CM, Bailey ST, Bhat S, et al. The hormone resistin links obesity to diabetes. *Nature* 2001;409:307–12. <https://doi.org/10.1038/35053000>; PMID: 11201732.
 128. Cho Y, Lee SE, Lee HC, et al. Adipokine resistin is a key player to modulate monocytes, endothelial cells, and smooth muscle cells, leading to progression of atherosclerosis in rabbit carotid artery. *J Am Coll Cardiol* 2011;57:99–109. <https://doi.org/10.1016/j.jacc.2010.07.035>; PMID: 21855508.
 129. Frankel DS, Vasan RS, D'Agostino RB Sr, et al. Resistin, adiponectin, and risk of heart failure the Framingham offspring study. *J Am Coll Cardiol* 2009;53:754–62. <https://doi.org/10.1016/j.jacc.2008.07.073>; PMID: 19245965.
 130. Butler J, Kaloogeropoulos A, Georgiopoulou V, et al. Serum resistin concentrations and risk of new onset heart failure in older persons: the Health, Aging, and Body Composition (Health ABC) study. *Arterioscler Thromb Vasc Biol* 2009;29:1144–9. <https://doi.org/10.1161/ATVBAHA.109.186783>; PMID: 19372460.
 131. Mishra J, Dent C, Tarabishi R, et al. Neutrophil gelatinase-associated lipocalin (NGAL) as a biomarker for acute renal injury after cardiac surgery. *Lancet* 2005;365:1231–8. [https://doi.org/10.1016/S0140-6736\(05\)74811-X](https://doi.org/10.1016/S0140-6736(05)74811-X); PMID: 15811456.
 132. Mårtensson J, Bellomo R. The rise and fall of NGAL in acute kidney injury. *Blood Purif* 2014;37:304–10. <https://doi.org/10.1159/000364937>; PMID: 25170751.
 133. Maisel AS, Mueller C, Fitzgerald R, et al. Prognostic utility of plasma neutrophil gelatinase-associated lipocalin in patients with acute heart failure: the NGAL Evaluation Along with B-type Natriuretic Peptide in acutely decompensated heart failure (GALLANT) trial. *Eur J Heart Fail* 2011;13:846–51. <https://doi.org/10.1093/eurjhf/hfr087>; PMID: 21791540.
 134. Cruz DN, Goh CY, Haase-Fliehl A, et al. Early biomarkers of renal injury. *Congest Heart Fail* 2010;16(Suppl 1):S25–31. <https://doi.org/10.1111/j.1751-7133.2010.00163.x>; PMID: 20653708.
 135. Zivlas C, Triposkiadis F, Psarras S, et al. Left atrial volume index in patients with heart failure and severely impaired left ventricular systolic function: the role of established echocardiographic parameters, circulating cystatin C and galectin-3. *Ther Adv Cardiovasc Dis* 2017;11:283–95. <https://doi.org/10.1177/175394471772498>; PMID: 28830298.
 136. Huerta A, López B, Ravassa S, et al. Association of cystatin C with heart failure with preserved ejection fraction in elderly hypertensive patients: potential role of altered collagen metabolism. *J Hypertens* 2016;34:130–8. <https://doi.org/10.1097/HJH.0000000000000757>; PMID: 26575701.
 137. Brouwers FP, de Boer RA, van der Harst P, et al. Incidence and epidemiology of new onset heart failure with preserved vs. reduced ejection fraction in a community-based cohort: 11-year follow-up of PREVENT. *Eur Heart J* 2013;34:1424–31. <https://doi.org/10.1093/eurheartj/ehf066>; PMID: 23470495.
 138. Xu CC, Fu GX, Liu QQ, Zhong Y. Association between cystatin C and heart failure with preserved ejection fraction in elderly Chinese patients. *Z Gerontol Geriatr* 2018;51:92–7. <https://doi.org/10.1007/s00391-016-1058-5>; PMID: 27206415.
 139. Carrasco-Sánchez FJ, Galisteo-Almeda L, Páez-Rubio I, et al. Prognostic value of cystatin C on admission in heart failure with preserved ejection fraction. *J Card Fail* 2011;17:31–8. <https://doi.org/10.1016/j.cardfail.2010.07.248>; PMID: 21187262.
 140. Weir MR. Microalbuminuria and cardiovascular disease. *Clin J Am Soc Nephrol* 2007;2:581–90. <https://doi.org/10.2215/CJN.03190906>; PMID: 17699466.
 141. Katz DH, Burns JA, Aguilar FG, et al. Albuminuria is independently associated with cardiac remodeling, abnormal right and left ventricular function, and worse outcomes in heart failure with preserved ejection fraction. *JACC Heart Fail* 2014;2:586–96. <https://doi.org/10.1016/j.jchf.2014.05.016>; PMID: 25282032.
 142. Bailey LN, Levitan EB, Judd SE, et al. Association of urine albumin excretion with incident heart failure hospitalization in community-dwelling adults. *JACC Heart Fail* 2019;7:394–401. <https://doi.org/10.1016/j.jchf.2019.01.016>; PMID: 31047019.
 143. Miura M, Shiba N, Nochioka K, et al. Urinary albumin excretion in heart failure with preserved ejection fraction: an interim analysis of the CHART 2 study. *Eur J Heart Fail* 2012;14:367–76. <https://doi.org/10.1093/eurjhf/hfs001>; PMID: 22298637.
 144. Ichimura T, Bonventre JV, Bailly V, et al. Kidney injury molecule-1 (KIM-1), a putative epithelial cell adhesion molecule containing a novel immunoglobulin domain, is up-regulated in renal cells after injury. *J Biol Chem* 1998;273:4135–42. <https://doi.org/10.1074/jbc.273.7.4135>; PMID: 9461608.
 145. Carlsson AC, Larsson A, Helmersson-Karlqvist J, et al. Urinary kidney injury molecule 1 and incidence of heart failure in elderly men. *Eur J Heart Fail* 2013;15:441–6. <https://doi.org/10.1093/eurjhf/hfs187>; PMID: 23220287.
 146. Emmens JE, Ter Maaten JM, Matsue Y, et al. Plasma kidney injury molecule-1 in heart failure: renal mechanisms and clinical outcome. *Eur J Heart Fail* 2016;18:641–9. <https://doi.org/10.1002/ehf.426>; PMID: 26511274.
 147. Brankovic M, Akkerhuis KM, Hoorn EJ, et al. Renal tubular damage and worsening renal function in chronic heart failure: clinical determinants and relation to prognosis (Bio-SHIFT study). *Clin Cardiol* 2020;43:630–8. <https://doi.org/10.1002/clc.23359>; PMID: 32298007.
 148. Anand IS, Kuskowski MA, Rector TS, et al. Anemia and change in hemoglobin over time related to mortality and morbidity in patients with chronic heart failure: results from Val-HeFT. *Circulation* 2005;112:121–27. <https://doi.org/10.1161/CIRCULATIONAHA.104.512988>; PMID: 16103233.
 149. Anand IS. Anemia and chronic heart failure implications and treatment options. *J Am Coll Cardiol* 2008;52:501–11. <https://doi.org/10.1016/j.jacc.2008.04.044>; PMID: 18687241.
 150. Gupta K, Kalra R, Rajapreyar I, et al. Anemia, mortality, and hospitalizations in heart failure with a preserved ejection fraction (from the TOPCAT trial). *Am J Cardiol* 2020;125:1347–54. <https://doi.org/10.1016/j.amjcard.2020.01.046>; PMID: 32151432.
 151. O'Meara E, Clayton T, McEntegart MB, et al. Clinical correlates and consequences of anemia in a broad spectrum of patients with heart failure: results of the Candesartan in Heart Failure: Assessment of Reduction in Mortality and Morbidity (CHARM) program. *Circulation* 2006;113:986–94. <https://doi.org/10.1161/CIRCULATIONAHA.105.582577>; PMID: 16476847.
 152. van Veldhuisen DJ, Anker SD, Ponikowski P, Macdougall IC. Anemia and iron deficiency in heart failure: mechanisms and therapeutic approaches. *Nat Rev Cardiol* 2011;8:485–93. <https://doi.org/10.1038/nrcardio.2011.77>; PMID: 21629210.
 153. Oexle H, Gnaiger E, Weiss G. Iron-dependent changes in cellular energy metabolism: influence on citric acid cycle and oxidative phosphorylation. *Biochim Biophys Acta* 1999;1413:99–107. [https://doi.org/10.1016/S0005-2728\(99\)00088-2](https://doi.org/10.1016/S0005-2728(99)00088-2); PMID: 10556622.
 154. Bekfani T, Pellicori P, Morris D, et al. Iron deficiency in patients with heart failure with preserved ejection fraction and its association with reduced exercise capacity, muscle strength and quality of life. *Clin Res Cardiol* 2019;108:203–11. <https://doi.org/10.1007/s00392-018-1344-x>; PMID: 30051186.
 155. Barandiarán Aizpurua A, Sanders-van Wijk S, Brunner-L Rocca HP, et al. Iron deficiency impacts prognosis but less exercise capacity in heart failure with preserved ejection fraction. *ESC Heart Fail* 2021;8:1304–13. <https://doi.org/10.1002/ehf2.13204>; PMID: 33522131.
 156. Ponikowski P, van Veldhuisen DJ, Comin-Colet J, et al. Beneficial effects of long-term intravenous iron therapy with ferric carboxymaltose in patients with symptomatic heart failure and iron deficiency. *Eur Heart J* 2015;36:657–68. <https://doi.org/10.1093/eurheartj/ehu385>; PMID: 25176939.
 157. Chen YT, Wong LL, Liew OW, Richards AM. Heart failure with reduced ejection fraction (HrEF) and preserved ejection fraction (HFpEF): the diagnostic value of circulating microRNAs. *Cells* 2019;8:1651. <https://doi.org/10.3390/cells8121651>; PMID: 31888288.
 158. Wong LL, Zou R, Zhou L, et al. Combining circulating microRNA and NT-proBNP to detect and categorize heart failure subtypes. *J Am Coll Cardiol* 2019;73:1300–13. <https://doi.org/10.1016/j.jacc.2018.11.060>; PMID: 30898206.
 159. Gevaert AB, Witvrouw I, Van Craenenbroeck AH, et al. miR-181c level predicts response to exercise training in patients with heart failure and preserved ejection fraction: an analysis of the OptimEx-Clin trial. *Eur J Prev Cardiol* 2021;28:1722–33. <https://doi.org/10.1093/eurjpc/zwab151>; PMID: 34508569.
 160. Hage C, Löfgren L, Michopoulos F, et al. Metabolic profile in HFpEF vs HFrEF patients. *J Card Fail* 2020;26:1050–9. <https://doi.org/10.1016/j.cardfail.2020.07.010>; PMID: 32750486.
 161. Hanff TC, Cohen JB, Zhao L, et al. Quantitative proteomic analysis of diabetes mellitus in heart failure with preserved ejection fraction. *JACC Basic Transl Sci* 2021;6:89–99. <https://doi.org/10.1016/j.jacbs.2020.11.011>; PMID: 33665511.

162. Adamo L, Yu J, Rocha-Resende C, et al. Proteomic signatures of heart failure in relation to left ventricular ejection fraction. *J Am Coll Cardiol* 2020;76:1982–94. <https://doi.org/10.1016/j.jacc.2020.08.061>; PMID: 33092734.
163. Stienen S, Ferreira JP, Kobayashi M, et al. Enhanced clinical phenotyping by mechanistic bioprofiling in heart failure with preserved ejection fraction: insights from the MEDIA-DHF study (The Metabolic Road to Diastolic Heart Failure). *Biomarkers* 2020;25:201–11. <https://doi.org/10.1080/1354750X.2020.1727015>; PMID: 32063068.
164. Stienen S, Ferreira JP, Kobayashi M, et al. Sex differences in circulating proteins in heart failure with preserved ejection fraction. *Biol Sex Differ* 2020;11:47. <https://doi.org/10.1186/s13293-020-00322-7>; PMID: 32831121.
165. Bayes-Genis A, Januzzi JL, Richards AM, et al. The “Peptide for Life” Initiative: a call for action to provide equal access to the use of natriuretic peptides in the diagnosis of acute heart failure across Europe. *Eur J Heart Fail* 2021;23:1432–6. <https://doi.org/10.1002/ejhf.2293>; PMID: 34231321.
166. Suthahar N, Tschöpe C, de Boer RA. Being in two minds—the challenge of heart failure with preserved ejection fraction diagnosis with a single biomarker. *Clin Chem* 2021;67:46–9. <https://doi.org/10.1093/clinchem/hvaa255>; PMID: 33257990.
167. Henkens MTHM, Remmelzwaal S, Robinson EL, et al. Risk of bias in studies investigating novel diagnostic biomarkers for heart failure with preserved ejection fraction. A systematic review. *Eur J Heart Fail* 2020;22:1586–97. <https://doi.org/10.1002/ejhf.1944>; PMID: 32592317.