

POSTER PRESENTATION

Open Access

INEX – A binary neuronal model with inhibitory and excitatory synapses

Kerstin Lenk*, Barbara Priwitzer

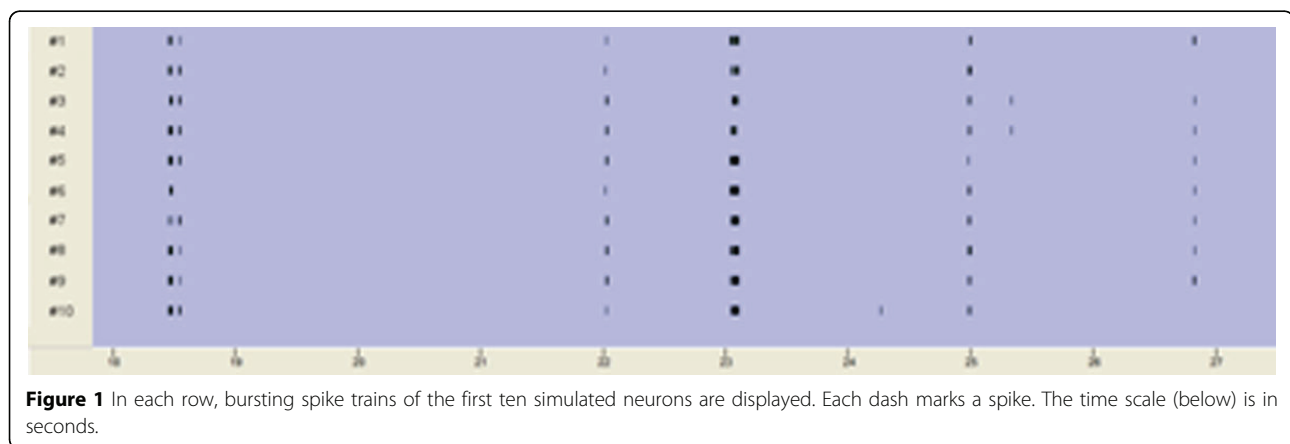
From Twentieth Annual Computational Neuroscience Meeting: CNS*2011
Stockholm, Sweden. 23-28 July 2011

Our aim is to develop a simple model which is suitable to simulate concentration-response curves as observed in in-vitro experiments with multielectrode array (MEA) neurochips. In an in-vitro experiment approximately 10.000 neurons of the frontal cortex of embryonic mice [1] are cultivated on a MEA neurochip [2]. Neuro-active substances like bicuculline are added to the network. Based on the recorded data, various features [3] are calculated adapted from spikes and bursts. The features are separately displayed in concentration-response curves [4] which show the logarithm of the substance concentration and the chosen feature.

The developed INEX (inhibitory-excitatory) model is a cellular automaton whose cells are neurons with two possible states: ON or OFF. Each neuron obtains several inputs and produces exactly one output (respectively 0 or

1). Furthermore, it is phenomenological model where the neurons are described as black boxes. The probability if a spike occurs in time slice was calculated using a Poisson process [5]. Neurons are connected by either inhibitory or excitatory synapses with varying strength. The corresponding parameters are called weights. The network is fully connected and has direct feedbacks. Additionally, a spike time history was added. The aim was to vary the parameters of the model in such a way that we obtain a sigmoid concentration-response curve to simulate excitatory and inhibitory effects in neuronal networks.

A network with 100 neurons ran over 10 seconds with varying weights and $\Delta t = 1$ ms. Ninety inhibitory synapses with weights between -0.2 and 0 and ten excitatory synapses with weights between 0 and 0.7 are used. We detected spikes and bursts (figure 1) as known



* Correspondence: kerstin.lenk@hs-lausitz.de
Department of Information Technology/ Electronics/ Mechanical
Engineering, Lausitz University of Applied Sciences, Senftenberg, 01968
Germany

from experiments with MEA neurochips. Thereafter, the same network ran over 18 minutes. The excitatory weights are reduced in six steps respectively by 0.05 every 3 minutes. The mean spike rate for each step is calculated and displayed in a concentration-response curve [6].

The INEX model shows potential to simulate inhibitory and excitatory effects which are also observed in experiments with MEA neurochips. A sigmoid concentration-response curve can be obtained by the simulation. We will work on parallelisation of processes to decrease the run time of the algorithm.

Published: 18 July 2011

References

1. Gramowski A, Juegelt K, Stuewe S, Schulze R, McGregor G, Wartenberg-Demand A, Loock J, Schroeder O, Weiss D: **Functional screening of traditional antidepressants with primary cortical neuronal networks grown on multielectrode neurochips.** *Eur J Neurosci* 2006, **24**(2):455-465.
2. Gross GW, Rhoades BK, Azzazy HME, Wu MC: **The use of neuronal networks on multielectrode arrays as biosensors.** *Biosensors & Bioelectronics* 1995, **10**:553-567.
3. Schroeder OHU, Gramowski A, Juegelt K, Teichmann C, Weiss DG: **Spike train data analysis of substance-specific network activity: Application to functional screening in preclinical drug development.** *6th Int. Meeting on Substrate-Integrated Microelectrodes* 2008.
4. Motulsky H, Christopoulos A: **Fitting Models to Biological Data Using Linear and Nonlinear Regression: A Practical Guide to Curve Fitting.** San Diego CA: GraphPad Software Inc.; 2003 [<http://www.graphpad.com>].
5. Heeger D: **Poisson model of spike generation.** 2000 [<http://www.cns.nyu.edu/david/handouts/poisson.pdf>].
6. Lenk K, Reuter M, Schroeder OHU, Gramowski A, Juegelt K, Privitzer B: **Information extraction from biphasic concentration-response curves for data obtained from neuronal activity of networks cultivated on multielectrode-array-neurochip.** *19th Annual Computational Neuroscience Meeting San Antonio*; 2010.

doi:10.1186/1471-2202-12-S1-P260

Cite this article as: Lenk and Privitzer: INEX – A binary neuronal model with inhibitory and excitatory synapses. *BMC Neuroscience* 2011 **12**(Suppl 1):P260.

**Submit your next manuscript to BioMed Central
and take full advantage of:**

- Convenient online submission
- Thorough peer review
- No space constraints or color figure charges
- Immediate publication on acceptance
- Inclusion in PubMed, CAS, Scopus and Google Scholar
- Research which is freely available for redistribution

Submit your manuscript at
www.biomedcentral.com/submit

