

Swiss-cheese macula

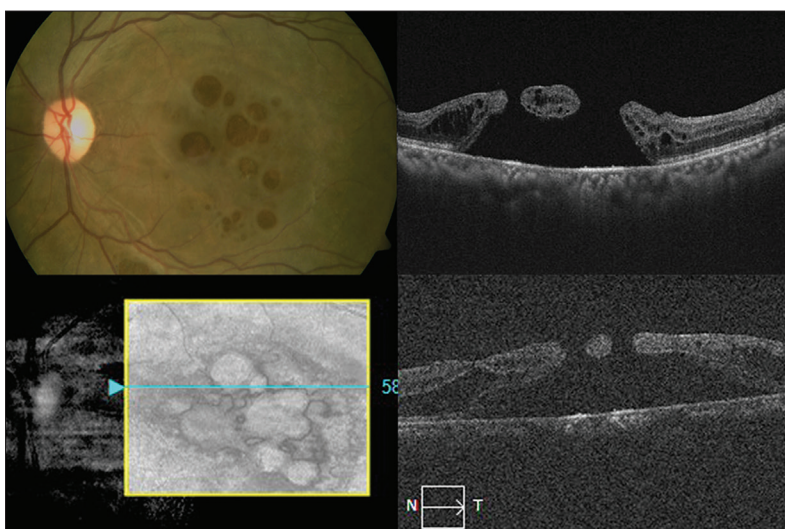


Figure 1: Composite image includes fundus and optical coherence tomography pictures

A 61-year-old female presented with poor vision (20/200, N36) and a postmacular hole surgery done a year ago.

Left eye fundus and the red-free image shows posterior pole retinal detachment (RD) and multiple full-thickness defects within the macular area, giving a “Swiss cheese” appearance. Optical coherence tomography (OCT) shows full-thickness defects with bridging retinal tissue, cystic changes, and neurosensory detachment [Fig. 1].

Paracentral retinal breaks after internal limiting membrane (ILM) peeling are rare.^[1-5] Postulated mechanisms include mechanical trauma while grasping ILM, weakening of glial structure because of Muller cells damage leading to photoreceptor apoptosis and contracture of remnant ILM tissues. They are stationary but are responsible for poor vision.

Declaration of patient consent

The authors certify that they have obtained all appropriate patient consent forms. In the form the patient(s) has/have given his/her/their consent for his/her/their images and other clinical information to be reported in the journal. The patients understand that their names and initials will not be published and due efforts will be made to conceal their identity, but anonymity cannot be guaranteed.

Financial support and sponsorship

Nil.

Conflicts of interest

There are no conflicts of interest.

Kunal K Shah, Pramod S Bhende

Shri Bhagwan Mahavir Vitreoretina Services,
Medical Research Foundation, Sankara Nethralaya,
Chennai, Tamil Nadu, India

Correspondence to: Dr. Pramod S Bhende,
Shri Bhagwan Mahavir Vitreoretina Services, Medical Research
Foundation, Sankara Nethralaya, No 18, College Road,
Nungambakkam, Chennai - 600 006, Tamil Nadu, India.
E-mail: drpb@snmail.org

References

1. Rubinstein A, Bates R, Benjamin L, Shaikh A. Iatrogenic eccentric full thickness macular holes following vitrectomy with ILM peeling for idiopathic macular holes. *Eye* 2005;19:1333-5.
2. Michalewska Z, Michalewski J, Nawrocki J. Paracentral retinal defects after vitrectomy for macular hole and their evolution over time. *Retin Cases Brief Rep* 2010;4:190-3.
3. Steven P. Secondary paracentral retinal holes following internal limiting membrane removal. *Br J Ophthalmol* 2006;90:293-5.
4. Hussain N, Mitra S. Multiple extrafoveal macular holes following internal limiting membrane peeling. *Int Med Case Rep J* 2018;11:105-11.
5. Brouzas D, Dettoraki M, Lavaris A, Kourvetaris D, Nomikarios N, Moschos MM. Postoperative eccentric macular holes after vitrectomy and internal limiting membrane peeling. *Int Ophthalmol* 2017;37:643-8.

This is an open access journal, and articles are distributed under the terms of the Creative Commons Attribution-NonCommercial-ShareAlike 4.0 License, which allows others to remix, tweak, and build upon the work non-commercially, as long as appropriate credit is given and the new creations are licensed under the identical terms.

Access this article online	
Quick Response Code:	Website: www.ijo.in
	DOI: 10.4103/ijo.IJO_1425_19

Cite this article as: Shah KK, Bhende PS. Swiss-cheese macula. *Indian J Ophthalmol* 2020;68:526.