

CORRECTION

Open Access



Correction to: The polymorphism and geographical distribution of knockdown resistance of adult *Anopheles sinensis* populations in eastern China

Wei-Long Tan^{1,2†}, Chun-Xiao Li^{1†}, Rui-Chen Lv^{2†}, Yan-De Dong¹, Xiao-Xia Guo¹, Dan Xing¹, Ming-hao Zhou³, Yan Xu³, Hong-liang Chu³, Gang Wang¹, Chang-qiang Zhu², Jun Sun^{3*} and Tong-Yan Zhao^{1*}

Correction to: Malar J (2019) 18:164

<https://doi.org/10.1186/s12936-019-2793-z>

Please be advised that since publication of the original article [1] the authors have flagged that they omitted to

provide the up-to-date version of Fig. 1 and, as such, the wrong version of Fig. 1 is present in the article.

Please see below for the correct (up-to-date) version of the figure:

*Correspondence: jscdcsjvip@vip.sina.com; tongyanzhao@126.com

[†]Wei-Long Tan, Chun-Xiao Li and Rui-Chen Lv had an equal contribution

¹ State Key Laboratory of Pathogen and Biosecurity, Beijing Institute of Microbiology and Epidemiology, Beijing 100071, China

³ Department of Vector Control, Jiangsu Center for Disease Prevention and Control, Nanjing, Jiangsu, China

Full list of author information is available at the end of the article



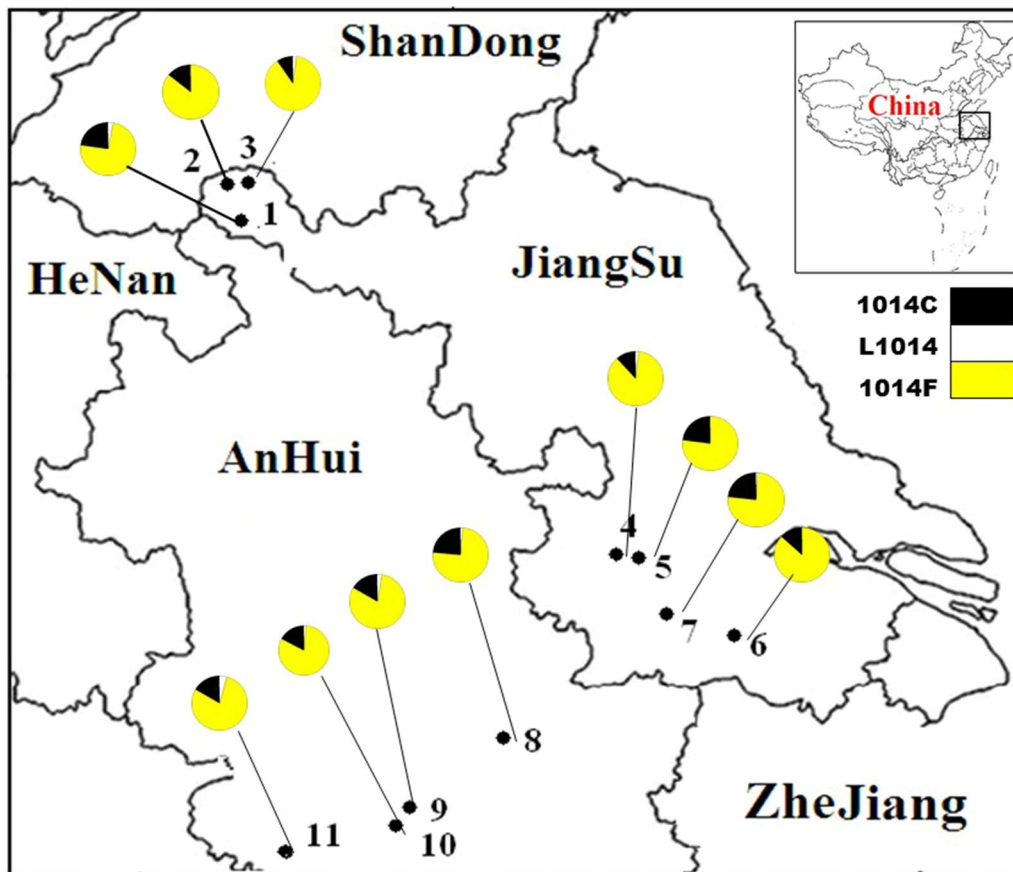


Fig. 1 The location of collection sites of adult *Anopheles sinensis* specimens and distribution of *kdr* allele. 1: YL (Yunlong); 2: XN (Xiaonian); 3: SZ (Shazhuang); 4: DT (Dangtu); 5: DY (Danyang); 6: BN (Benniu); 7: CS (Changshu); 8: FC (Fanchang); 9: CZ (Chizhou); 10: WH (Wanghe); 11: PZ (Panzheng). In the colour circles, different colour indicated different substitutions in percentage

The authors apologize for this error.

Author details

¹ State Key Laboratory of Pathogen and Biosecurity, Beijing Institute of Microbiology and Epidemiology, Beijing 100071, China. ² Department of Vector Control, Huadong Research Institute for Medicine and Biotechnology, Nanjing 210002, Jiangsu, China. ³ Department of Vector Control, Jiangsu Center for Disease Prevention and Control, Nanjing, Jiangsu, China.

Reference

1. Tan W-L, Li C-X, Lv R-C, Dong Y-D, Guo X-X, Xing D, Zhou M-h, Xu Y, Chu H-L, Wang G, Zhu C-q, Sun J, Zhao T-Y. The polymorphism and geographical distribution of knockdown resistance of adult *Anopheles sinensis* populations in eastern China. Malar J. 2019;18:164. <https://doi.org/10.1186/s12936-019-2793-z>.

Publisher’s Note

Springer Nature remains neutral with regard to jurisdictional claims in published maps and institutional affiliations.

The original article can be found online at <https://doi.org/10.1186/s12936-019-2793-z>.