



OPEN

Newly diagnosed diabetes has high risk for cardiovascular outcome in ischemic stroke patients

Kyung-Hee Cho¹, Sun U. Kwon²✉, Ji Sung Lee³, Sungwook Yu¹ & A-Hyun Cho⁴

We investigated cardiovascular outcomes in ischemic stroke patients with newly diagnosed diabetes mellitus (DM) compared with those of patients with previously known DM and no DM using the glycosylated hemoglobin (HbA1c) criteria. The relationship between new DM diagnosis and cardiovascular risk remains unclear to date. We performed post hoc analysis using the data of participants from the Prevention of Cardiovascular events in iSchemic Stroke patients with high risk of cerebral hemorrhage (PICASSO) trial. Newly diagnosed DM was defined as HbA1c of $\geq 6.5\%$ without known DM history. The outcome was the incidence of composite cardiovascular events, including stroke (ischemic and hemorrhagic), myocardial infarction, and cardiovascular death. In total, 1306 patients were included; 38 patients (2.9%) had newly diagnosed DM; 438 patients (33.5%), known DM; and 830 patients (63.6%), no DM. In patients with newly diagnosed DM, known DM, and no DM, the incidence of ischemic stroke was 8.93, 3.79, and 2.64 per 100 person-years (log-rank test; $p = 0.0092$), while that of composite cardiovascular events was 8.93, 5.92, and 3.87 per 100 person-years ($p = 0.025$), respectively. Newly diagnosed DM was an important risk factor for ischemic stroke and composite cardiovascular events after ischemic stroke.

Registration: URL: <https://www.clinicaltrials.gov>. Unique identifier: NCT01013532.

Abbreviations

DM	Diabetes mellitus
PICASSO	Prevention of Cardiovascular events in iSchemic Stroke patients with a high risk of cerebral hemorrhage
HbA1c	Glycosylated hemoglobin
NIHSS	National Institutes of Health stroke scale
BMI	Body mass index
HR	Hazard ratio
CI	Confidence interval
HDL	High-density lipoprotein cholesterol
LDL	Low-density lipoprotein cholesterol

The incidence of cardiovascular disease is approximately two-fold higher in people with diabetes mellitus (DM), even after adjusting for other established cardiovascular risk factors¹. Cardiovascular risk reduction is a treatment goal in DM patient management. Furthermore, DM is an important risk factor for cardiovascular outcomes after ischemic stroke^{2–4}.

There is limited data on cardiovascular outcomes of newly diagnosed DM in ischemic stroke patients without DM history. A hospital-based prospective cohort study conducted in 701 Cameroonian patients with acute stroke showed that newly diagnosed DM patients had a more severe stroke at the time of admission and a higher incidence of mortality at 3 months after stroke than the patients with known DM⁵. However, this study included both ischemic and hemorrhagic stroke patients and had a short follow-up period. Additionally, the endpoints of this study were modified Rankin Scale (mRS) scores and 3-month mortality. Among 1251 patients with acute ischemic stroke in a previous Chinese study, newly diagnosed DM was an independent risk factor for 1-year

¹Department of Neurology, Korea University Anam Hospital, Korea University College of Medicine, Seoul, South Korea. ²Department of Neurology, Asan Institute for Life Sciences, Asan Medical Center, University of Ulsan College of Medicine, Seoul, South Korea. ³Clinical Research Center, Asan Institute for Life Sciences, Asan Medical Center, University of Ulsan College of Medicine, Seoul, South Korea. ⁴Department of Neurology, Yeouido St. Mary's Hospital, College of Medicine, The Catholic University of Korea, Seoul, South Korea. ✉email: sukwon@amc.seoul.kr

	No DM (n = 830)	Known DM (n = 438)	Newly diagnosed DM (n = 38)	p value
Age (years)	66.1 ± 11.1	66.4 ± 9.9	64.7 ± 10.9	0.6007
Sex, male	521 (62.8)	256 (58.4)	26 (68.4)	0.2167
Education (years)	9 (6–12)	9 (6–12)	9 (6–12)	0.5729
Qualifying ischemic event				0.4464
Ischemic stroke	789 (95.1)	423 (96.6)	36 (94.7)	
Transient ischemic attack	41 (4.9)	15 (3.4)	2 (5.3)	
Medical history				
Hypertension	722 (87.0)	403 (92.0)	34 (89.5)	0.0266
Dyslipidemia	310 (37.3)	215 (49.1)	15 (39.5)	0.0003
Current smoking	38 (4.6)	24 (5.5)	4 (10.5)	0.2313
Coronary artery disease	176 (21.2)	79 (18.0)	12 (31.6)	0.0929
Family history of stroke	167 (20.1)	83 (18.9)	9 (23.7)	0.7362
Vital signs				
Systolic blood pressure (mmHg)	134.8 ± 18.6	136.1 ± 18.4	134.8 ± 15.6	0.5042
Diastolic blood pressure (mmHg)	80.3 ± 11.9	80.0 ± 11.7	77.2 ± 10.7	0.2677
Height (cm)	161.4 ± 9.3	161.3 ± 8.6	161.8 ± 8.3	0.9377
Body weight (kg)	63.1 ± 11.9	64.4 ± 11.5	67.4 ± 13.9	0.0292
Waist circumference (cm)	87.2 ± 9.5	89.1 ± 9.6	89.9 ± 9.3	0.0017
Body mass index (kg/m ²)	24.1 ± 3.4	24.7 ± 3.5	25.7 ± 4.6	0.0022
Laboratory findings (mg/dL)				
Glucose	105.0 ± 23.5	150.5 ± 60.7	125.4 ± 26.7	<0.0001
Total cholesterol	168.6 ± 40.4	166.2 ± 43.1	168.2 ± 36.7	0.6334
Triglyceride	122.8 ± 86.8	140.0 ± 84.9	152.1 ± 106.6	0.0011
HDL	46.2 ± 11.9	43.0 ± 12.3	47.7 ± 10.6	<0.0001
LDL	102.2 ± 34.1	102.8 ± 39.5	98.5 ± 29.4	0.7771
HbA1c (%)	5.65 ± 0.38	7.24 ± 1.42	6.78 ± 0.37	<0.0001
hsCRP	0.24 ± 0.31	0.28 ± 0.38	0.28 ± 0.34	0.1019
Baseline NIHSS score	1 (0–3)	2 (1–3)	1 (0–3)	0.0190
Baseline mRS score				0.0072
0	151 (18.3)	53 (12.2)	10 (26.3)	
1	345 (41.8)	171 (39.4)	16 (42.1)	
2	187 (22.7)	101 (23.3)	6 (15.8)	
3	81 (9.8)	51 (11.8)	2 (5.3)	
4	54 (6.5)	51 (11.8)	4 (10.5)	
5	7 (0.8)	7 (1.6)	0 (0.0)	

Table 1. Demographic and clinical characteristics according to diabetes status. Values are presented as mean ± standard deviation, number (%), or median (interquartile range). *DM* diabetes mellitus, *HDL* high-density lipoprotein cholesterol, *LDL* low-density lipoprotein cholesterol, *hsCRP* high-sensitivity C-reactive protein, *NIHSS* National Institute of Health Stroke Scale, *mRS* modified Rankin Scale.

mortality, stroke recurrence, and poor functional outcome ($mRS \geq 3$)⁶. However, 1-year prognosis of newly diagnosed DM patients was assessed through telephone follow-ups, and all outcome variables were compared with patients with no DM history rather than those with known DM history.

We aimed to evaluate the relationship between newly diagnosed DM and long-term prognosis of patients with acute ischemic stroke and determine whether newly diagnosed DM was associated with a higher risk of cardiovascular outcomes after ischemic stroke as opposed to known or no DM history.

Results

Among the 1534 patients randomized in the PICASSO trial, 1306 (85.1%) patients whose initial HbA1c level had been recorded were included in the present study. The mean age of the patients was 66.2 ± 10.7 years and 503 (38.5%) were females. Of the 1306 patients, the qualifying ischemic events were ischemic stroke in 1248 patients (95.6%) and transient ischemic attack in 58 patients (4.4%). Patients were followed-up for a median duration of 2.0 years (IQR 1.0–3.0).

Of these 1306 patients, 38 (2.9%) were classified as patients with newly diagnosed DM, 438 (33.5%) as patients with known DM history, and 830 (63.6%) as patients with no DM history. The demographic and clinical characteristics of these three groups are summarized in Table 1. History of hypertension ($p = 0.0266$), history of dyslipidemia ($p = 0.0003$), body weight ($p = 0.0292$), waist circumference ($p = 0.0017$), body mass index ($p = 0.0022$), initial glucose level ($p < 0.0001$), triglyceride level ($p = 0.0011$), HDL level ($p < 0.0001$), HbA1c level

	No DM	Known DM	Newly diagnosed DM	<i>p</i> value [†]
Composite cardiovascular events				0.0252
No. of event	66	50	6	
Incidence rate per 100 person-years (95% CI)	3.87 (3.04–49.20)	5.92 (4.49–78.16)	8.93 (4.01–198.74)	
Cerebral hemorrhage				0.4332
No. of event	13	10	0	
Incidence rate per 100 person-years (95% CI)	0.76 (0.44–13.10)	1.18 (0.64–21.98)	0.00 (0.00–0.00)	
Stroke				0.0320
No. of event	58	41	6	
Incidence rate per 100 person-years (95% CI)	3.40 (2.63–43.94)	4.86 (3.58–65.96)	8.93 (4.01–198.74)	
Ischemic stroke				0.0092
No. of event	45	32	6	
Incidence rate per 100 person-years (95% CI)	2.64 (1.97–35.29)	3.79 (2.68–53.60)	8.93 (4.01–198.74)	
Myocardial infarction				0.0852
No. of event	3	6	0	
Incidence rate per 100 person-years (95% CI)	0.18 (0.06–5.44)	0.71 (0.32–15.80)	0.00 (0.00–0.00)	
Cardiovascular death				0.4519
No. of event	5	5	0	
Incidence rate per 100 person-years (95% CI)	0.29 (0.12–7.03)	0.59 (0.25–14.21)	0.00 (0.00–0.00)	

Table 2. Comparison of incidence rate among diabetes status. *DM* diabetes mellitus, *CI* confidence interval. [†]*p*-value by log rank test.

($p < 0.0001$), initial NIHSS scores ($p = 0.0019$), and initial mRS scores ($p = 0.0072$) were significantly different among the three groups. Newly diagnosed DM patients had a higher body weight, waist circumference, BMI, and initial triglyceride level than those with known or no DM history. Patient with known DM were more likely to have hypertension or dyslipidemia as well as higher NIHSS scores, glucose level, and HbA1c levels. However, systolic and diastolic blood pressure, history of coronary artery disease, current smoking status, low-density lipoprotein cholesterol (LDL) level, and education level did not differ among the three groups.

Table 2 shows the summary of all events occurring during 2 years of follow-up. Of 830 patients without DM, 438 patients with known DM, and 38 patients with newly diagnosed DM, composite cardiovascular events occurred in 66 (7.9%), 50 (11.4%), and 6 (15.8%) patients, respectively; the incidence per 100 person-years in patients with no DM history, with known DM history, and newly diagnosed DM was 3.87, 5.92, and 8.93, respectively ($p = 0.025$). The incidence of any stroke ($p = 0.032$) and ischemic stroke ($p = 0.009$) events progressively increased from patients with no DM to those with newly diagnosed DM, and this difference was statistically significant. Both cerebral hemorrhage event and ischemic stroke event occurred in a patient with known DM.

Table 3 shows the HR for cardiovascular outcomes according to the patients' diabetes status. In comparison with the patients with no DM history, the adjusted HR for composite cardiovascular outcomes in patients with newly diagnosed DM was 2.36 (95% CI 1.01–5.54; $p = 0.0480$). On comparing stroke events between patients with no DM history and those with newly diagnosed DM, the adjusted HR of the latter group of patients was found to be 2.72 (95% CI 1.15–6.43; $p = 0.0223$). The adjusted HR for ischemic stroke events in patients with newly diagnosed DM was 3.34 (95% CI 1.39–8.01; $p = 0.0069$) when compared with those with no DM history. Only ischemic stroke events were found to be significantly different between the patients with newly diagnosed DM and known DM history (adjusted HR 2.47; 95% CI 1.00–6.10; $p = 0.0499$). Newly diagnosed DM was independently associated with the occurrence of composite cardiovascular events, stroke, and ischemic stroke.

Figure 1 depicts Kaplan–Meier curves for composite cardiovascular events (Fig. 1A), stroke (Fig. 1B), and ischemic stroke (Fig. 1C) among the three groups. Outcome event probability was significantly different among the three groups and progressively increased from patients with no DM history to those with newly diagnosed DM. Notably, patients with newly diagnosed DM had a higher risk of cardiovascular outcomes than the patients with known DM history and those with no DM history.

Discussion

The present study found that the incidence of composite cardiovascular events after ischemic stroke significantly is higher in patients with newly diagnosed DM. Especially, the incidence of ischemic stroke is higher in patients with newly diagnosed DM compared with the incidence in both the patients with known and no DM history, after adjusting for hypertension, dyslipidemia, BMI, glucose level, triglyceride level, HDL level, and NIHSS score. Patients with known DM had a higher incidence of hypertension and dyslipidemia as well as higher initial NIHSS scores and mRS scores compared with the patients with newly diagnosed DM and no DM history. Moreover, the initial glucose and HbA1c levels were significantly higher in the patients with known DM history. Contrastingly, newly diagnosed DM patients had a significantly higher body weight, longer waist circumference, higher BMI, and higher triglyceride level. Presence of newly diagnosed, undetected DM in patients with ischemic stroke supports the hypothesis that unrecognized metabolic abnormalities contribute to adverse cardiovascular outcomes. Metabolic syndrome symptoms, including obesity and high serum triglyceride level, appears early during the

	Unadjusted HR (95% CI)	P value	Adjusted HR (95% CI)	p value
Composite cardiovascular events				
DM status		0.0279		0.0480
No DM (reference)				
Known DM	1.50 (1.04–2.16)	0.0317	1.49 (0.98–2.28)	0.0639
Newly diagnosed DM	2.32 (1.01–5.35)	0.0485	2.36 (1.01–5.54)	0.0480
Cerebral hemorrhage				
DM status		0.5765		0.7492
No DM (reference)				
Known DM	1.55 (0.68–3.57)	0.2991	1.45 (0.55–3.79)	0.4501
Newly diagnosed DM	0.97 (0.05–17.84)	0.9824	1.03 (0.05–20.04)	0.9827
Stroke				
DM status		0.0374		0.0506
No DM (reference)				
Known DM	1.39 (0.93–2.07)	0.1061	1.37 (0.87–2.18)	0.1784
Newly diagnosed DM	2.65 (1.14–6.13)	0.0233	2.72 (1.15–6.43)	0.0223
Ischemic stroke				
DM status		0.0136		0.0233
No DM (reference)				
Known DM	1.39 (0.89–2.19)	0.1519	1.35 (0.80–2.29)	0.2608
Newly diagnosed DM	3.39 (1.45–7.96)	0.0049	3.34 (1.39–8.01)	0.0069
Myocardial infarction				
DM status		0.1769		0.1505
No DM (reference)				
Known DM	3.75 (0.92–15.27)	0.0652	4.62 (0.99–21.66)	0.0521
Newly diagnosed DM	3.51 (0.14–86.51)	0.4425	2.08 (0.07–65.73)	0.6777
Cardiovascular death				
DM status		0.5242		0.8301
No DM (reference)				
Known DM	2.02 (0.57–7.19)	0.2756	1.41 (0.31–6.30)	0.6569
Newly diagnosed DM	2.34 (0.10–52.24)	0.5914	2.27 (0.09–57.70)	0.6202

Table 3. Hazard ratios and 95% Confidence Intervals for cardiovascular outcome by diabetes status. Hazard ratio adjusted for hypertension, dyslipidemia, body mass index, Glucose, Triglyceride, HDL and NIHSS score. DM Diabetes mellitus, HR hazard ratio, CI confidence interval.

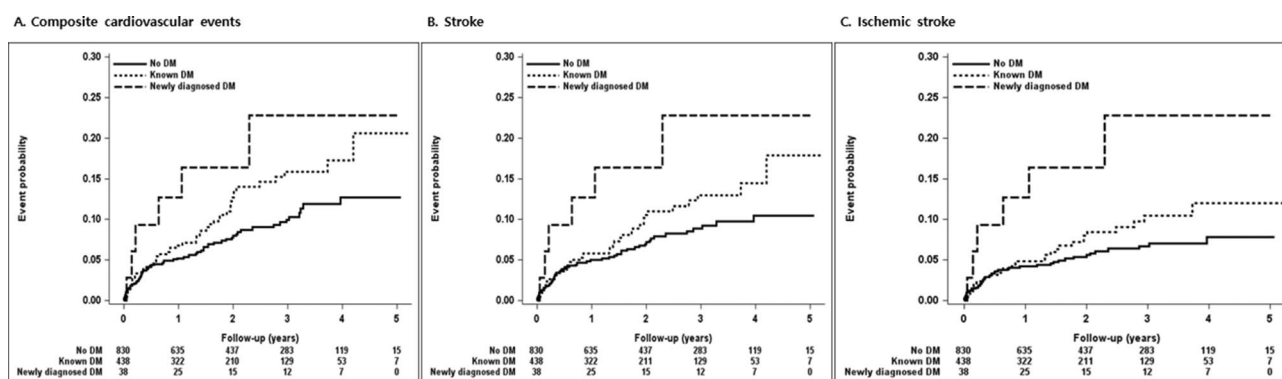


Figure 1. Kaplan–Meier estimates of event probability expressed as diabetes status.

course of the disease and several years prior to diabetes development. Obesity parameters (such as BMI and waist circumference) and higher triglyceride level of the patients with newly diagnosed DM in our study were consistent with previous studies which demonstrated significant associations between obesity parameters and risk for diabetes^{7,8}. Therefore, long-term glucometabolic derangement in subdiabetic range may become a risk factor for cardiovascular disease and therefore influence its outcomes⁹.

It is well recognized that an elevated HbA1c level and hyperglycemia are risk factors for the development of cardiovascular events¹⁰. Previous studies have shown an increased incidence of adverse events in patients

with non-diabetic myocardial infarction who had an elevated HbA1c level⁹, suggesting that the underlying mechanisms do not entirely pertain to stress-induced hyperglycemia. In the present study, we also observed that known DM patients with higher HbA1c and glucose levels had more severe symptoms initially. However, newly diagnosed DM is associated with increased incidence of cardiovascular events including ischemic stroke despite adequate secondary prevention with antiplatelet agents. Routine HbA1c measurement in acute stroke patients may facilitate the identification of patients with undetected DM or those who are at an increased risk of DM development in the future¹¹.

To our knowledge, this is the first and the largest study that uses HbA1c level to assess the effect of newly diagnosed DM on prognosis after ischemic stroke and compares the effect with that associated with both known and no DM history. Although previous studies suggested that newly diagnosed DM was associated with poor prognosis after stroke^{5,6}, neither study separately reported the adjusted HRs for cardiovascular events in patients with known DM and newly diagnosed DM. Thus, from previous studies, it was unclear whether newly diagnosed DM affected prognosis; however, our study clearly demonstrated that newly diagnosed DM independently and adversely affects prognosis after ischemic stroke. The main strength of this study is a homogeneous patient group because only non-cardioembolic patients who had imaging features of small vessel occlusive disease were included.

A very small proportion (2.9%, 38 of 1306) of patients from our PICASSO database who did not have pre-existing DM but were admitted owing to ischemic stroke were newly diagnosed with DM as opposed to previous studies, which reported a higher prevalence of newly diagnosed DM in the range of 9.4–43.1% among stroke patients^{5,6,12,13}. This discrepancy could be caused by the differences in study design, the study area, the education level of patients, and public awareness of diabetes. South Korea has a well-organized health care system, and 97.2% of the Korean population are covered by the National Health Insurance Service, which provides regular health check-ups every 1 or 2 years¹⁴.

Our study has several limitations. First, it was a retrospective sub-analysis of a prospective study. Moreover, it has the potential to be affected by chance and confounding bias that exist in a post hoc design, even if adjustment analyses are performed. Second, there were only a small number of patients with newly diagnosed DM, which reduced the statistical power to draw definite conclusions. Third, although the main trial was performed across three Asian countries, this analysis included only Korean patients owing to unavailable data. Thus, caution should be exercised while generalizing this result to all patients with stroke. Finally, although newly diagnosed DM was defined as initial HbA1c level of $\geq 6.5\%$ without a history of DM in this study, in the original study, newly diagnosed DM patients had been categorized into the no DM history group. We had no data regarding new occurrences of DM or the initiation of glucose-lowering medication during the follow-up period.

Conclusions

Our study found that the occurrence of composite cardiovascular events after ischemic stroke increases in newly diagnosed DM patients. Furthermore, newly diagnosed DM may pose higher risk of recurrent cerebral infarction in ischemic stroke patients than that the risk posed by known DM history. Further research is needed to elucidate how newly diagnosed DM might affect cardiovascular outcome. Routine HbA1c measurement in ischemic stroke may help identify patients with undetected DM or prediabetic patients having an increased risk of DM development in the future.

Methods

Study design and patients. We performed post hoc analysis by analyzing the data of participants from the Prevention of Cardiovascular events in iSchemic Stroke patients with a high risk of cerebral hemorrhage (PICASSO) trial. Patients were enrolled into the PICASSO study within 6 months of experiencing ischemic stroke or transient ischemic attack and had symptomatic or asymptomatic ICH or multiple cerebral microbleeds¹⁵. It was a two-by-two factorial study designed to determine the efficacy and safety of cilostazol and probucol. Between April 2010 and August 2015, and was performed to investigate which antiplatelet agent may be more effective and safe to treat ischemic stroke patients with high risk of cerebral hemorrhage. Conclusively, cilostazol was non-inferior to aspirin for the prevention of cardiovascular events, but did not reduce the risk of hemorrhagic stroke. Details of the rationale, study design, characteristics of the participants, and principal results of PICASSO trial have been published elsewhere^{15,16}. All methods were carried out in accordance with relevant guidelines (STROBE guidelines). All participants provided written informed consent and the trial was approved by the institutional review board (IRB) of all participating centers. (Asan medical center IRB No. 2009–0189). Among them, patients whose initial glycosylated hemoglobin (HbA1c) level had been recorded were included in the present analysis. There were no other exclusion criteria.

Clinical information was collected at baseline. The data included age, sex, education, known medical history (the presence of hypertension, diabetes, dyslipidemia, coronary artery disease, and current smoking status), family history of stroke, use of DM medication, initial National Institutes of Health stroke scale (NIHSS) score, initial mRS score, vital signs, body mass index (BMI), and blood test results (including glucose, HbA1c, lipid profile). HbA1c level was obtained in screening period before randomization in PICASSO trial.

Subgroups and definitions. For this analysis, PICASSO trial participants whose initial HbA1c level was recorded were classified either as no DM, known DM, or newly diagnosed DM. Known DM was established on the basis of history if the patient had been informed of the diagnosis by a physician before the index stroke or was taking oral hypoglycemic agents or insulin or receiving dietary therapy. Newly diagnosed DM was defined as an initial HbA1c cutoff value of $\geq 6.5\%$ as per the recommendation by the American Diabetes Association, without a history of DM because the current guidelines support the use of HbA1c for the diagnosis of diabetes.

Outcome measures. The primary and secondary outcomes were prespecified at the start of the PICASSO trial¹⁵. All outcomes were confirmed by the Central Independent Adjudication Committee. The outcome of the present study was the occurrence of composite cardiovascular events, including stroke (ischemic and hemorrhagic), myocardial infarction, and cardiovascular death.

Statistical analysis. Differences in baseline characteristics among the three groups were compared. The frequency (percentage), mean (\pm standard deviation, SD), or median (interquartile range, IQR) are reported depending on the variable type. Categorical variables were analyzed using Pearson's chi-square test or Fisher's exact test, and continuous variables were analyzed using Analysis of Variance (ANOVA) and Kruskal–Wallis tests, as appropriate. The incidence rates of outcomes were calculated by dividing the number of incident cases with the total follow-up period (person-years). Cumulative events of outcomes were assessed using Kaplan–Meier estimates and compared using the log-rank test. Hazard ratios (HRs) and 95% confidence interval (CI) values of outcomes were analyzed using the Cox proportional hazards model for the three groups after adjusting for hypertension, dyslipidemia, BMI, glucose level, triglyceride level, high-density lipoprotein cholesterol (HDL) level, and NIHSS score. We tested the assumption of proportionality of hazards using the numerical method proposed by Lin et al. derived from the cumulative sum of Martingale residuals¹⁷. We found no evidence for the violation of the proportional hazards assumption. All reported p-values were two-sided and not adjusted for multiple testing. All statistical results were analyzed using SAS 9.4 (SAS Institute Inc., Cary, NC, USA), and p-values of <0.05 were considered to be statistically significant.

Ethics approval and consent to participate. The study protocol was approved by the Institutional review board or ethics committee at each participating hospital. All patients provided written informed consent for participation in the trial.

Consent for publication. The authors have reviewed the manuscript and consent for publication.

Data availability

The data of this study may be available on reasonable request to the PICASSO Trial Registry.

Received: 13 March 2021; Accepted: 24 May 2021

Published online: 21 June 2021

References

- Rao Kondapally Seshasai, S. *et al.* Diabetes mellitus, fasting glucose, and risk of cause-specific death. *N. Engl. J. Med.* **364**, 829–841. <https://doi.org/10.1056/NEJMoa1008862> (2011).
- Reeves, M. J. *et al.* Quality of care and outcomes in patients with diabetes hospitalized with ischemic stroke: Findings from Get With the Guidelines–Stroke. *Stroke* **41**, e409–e417. <https://doi.org/10.1161/strokeaha.109.572693> (2010).
- Arboix, A. *et al.* Cerebral infarction in diabetes: Clinical pattern, stroke subtypes, and predictors of in-hospital mortality. *BMC Neurol.* **5**, 9. <https://doi.org/10.1186/1471-2377-5-9> (2005).
- Megherbi, S. E. *et al.* Association between diabetes and stroke subtype on survival and functional outcome 3 months after stroke: Data from the European BIOMED Stroke Project. *Stroke* **34**, 688–694. <https://doi.org/10.1161/01.Str.0000057975.15221.40> (2003).
- Mapoure, Y. N. *et al.* Acute stroke patients with newly diagnosed diabetes mellitus have poorer outcomes than those with previously diagnosed diabetes mellitus. *J. Stroke Cerebrovasc. Dis.* **27**, 2327–2335. <https://doi.org/10.1016/j.jstrokecerebrovasdis.2018.04.017> (2018).
- Jing, J. *et al.* Prognosis of ischemic stroke with newly diagnosed diabetes mellitus according to hemoglobin A1c criteria in Chinese population. *Stroke* **47**, 2038–2044. <https://doi.org/10.1161/strokeaha.116.013606> (2016).
- Mbanya, V. N., Kengne, A. P., Mbanya, J. C. & Akhtar, H. Body mass index, waist circumference, hip circumference, waist-hip-ratio and waist-height-ratio: Which is the better discriminator of prevalent screen-detected diabetes in a Cameroonian population?. *Diabetes Res. Clin. Pract.* **108**, 23–30. <https://doi.org/10.1016/j.diabres.2015.01.032> (2015).
- Rhee, E. J. *et al.* Relation between baseline height and new diabetes development: A nationwide population-based study. *Diabetes Metab. J.* **43**, 794–803. <https://doi.org/10.4093/dmj.2018.0184> (2019).
- Timmer, J. R. *et al.* Prognostic value of admission glycosylated hemoglobin and glucose in nondiabetic patients with ST-segment-elevation myocardial infarction treated with percutaneous coronary intervention. *Circulation* **124**, 704–711. <https://doi.org/10.1161/circulationaha.110.985911> (2011).
- Stolar, M. Glycemic control and complications in type 2 diabetes mellitus. *Am. J. Med.* **123**, S3–S11. <https://doi.org/10.1016/j.amjmed.2009.12.004> (2010).
- Selvin, E. *et al.* Cardiovascular outcomes in trials of oral diabetes medications: A systematic review. *Arch. Intern. Med.* **168**, 2070–2080. <https://doi.org/10.1001/archinte.168.19.2070> (2008).
- Matz, K. *et al.* Disorders of glucose metabolism in acute stroke patients: An underrecognized problem. *Diabetes Care* **29**, 792–797. <https://doi.org/10.2337/diacare.29.04.06.dc05-1818> (2006).
- Di Bonito, P. *et al.* Impact of known and unknown diabetes on in-hospital mortality from ischemic stroke. *Nutr. Metab. Cardiovasc. Dis.* **13**, 148–153. [https://doi.org/10.1016/s0939-4753\(03\)80174-6](https://doi.org/10.1016/s0939-4753(03)80174-6) (2003).
- Song, S. O. *et al.* Background and data configuration process of a nationwide population-based study using the Korean national health insurance system. *Diabetes Metab. J.* **38**, 395–403. <https://doi.org/10.4093/dmj.2014.38.5.395> (2014).
- Kim, B. J. *et al.* Prevention of cardiovascular events in Asian patients with ischaemic stroke at high risk of cerebral haemorrhage (PICASSO): A multicentre, randomised controlled trial. *Lancet Neurol.* **17**, 509–518. [https://doi.org/10.1016/s1474-4422\(18\)30128-5](https://doi.org/10.1016/s1474-4422(18)30128-5) (2018).
- Hong, K. S., Kim, B. J., Lee, J. Y., Kwon, S. U. & Investigators, P. I. C. A. S. S. O. Rationale and design of the Prevention of Cardiovascular events in Ischemic Stroke patients with high risk of cerebral hemorrhage (PICASSO) study: A randomized controlled trial. *Int. J. Stroke* **10**, 1153–1158. <https://doi.org/10.1111/ijis.12519> (2015).
- Lin, D. Y., Wei, L. J. & Ying, Z. Checking the Cox model with cumulative sums of martingale-based residuals. *Biometrika* **80**, 557–572 (1993).

Acknowledgements

We wish to thank the PICASSO investigators.

Author contributions

K.-H.C. and S.U.K. wrote the first draft of the manuscript. K.-H.C., J.S.L. and S.U.K. designed, interpreted the results and edited the manuscript. K.-H.C. and J.S.L. performed statistical analysis of this study. PICASSO investigators recruited participants in the PICASSO trial and collected data. All authors read and approved the final manuscript.

Funding

This work was supported by Korea Otsuka Pharmaceutical Corp and a grant of the Korea Health Technology R&D Project through the Korea Health Industry Development Institute, funded by the Ministry of Health and Welfare, Republic of Korea (Grant No. HI18C2383). This study was supported by grants (2015-P71001-00 and 2016-E71003-00) from the Korean Centers for Disease Control and Prevention.

Competing interests

The authors declare no competing interests.

Additional information

Correspondence and requests for materials should be addressed to S.U.K.

Reprints and permissions information is available at www.nature.com/reprints.

Publisher's note Springer Nature remains neutral with regard to jurisdictional claims in published maps and institutional affiliations.



Open Access This article is licensed under a Creative Commons Attribution 4.0 International License, which permits use, sharing, adaptation, distribution and reproduction in any medium or format, as long as you give appropriate credit to the original author(s) and the source, provide a link to the Creative Commons licence, and indicate if changes were made. The images or other third party material in this article are included in the article's Creative Commons licence, unless indicated otherwise in a credit line to the material. If material is not included in the article's Creative Commons licence and your intended use is not permitted by statutory regulation or exceeds the permitted use, you will need to obtain permission directly from the copyright holder. To view a copy of this licence, visit <http://creativecommons.org/licenses/by/4.0/>.

© The Author(s) 2021