



Published in final edited form as:

Lab Invest. 2010 February ; 90(2): 222–233. doi:10.1038/labinvest.2009.128.

## Runx2 regulates survivin expression in prostate cancer cells

Minyoung Lim<sup>1,\*</sup>, Chen Zhong<sup>2,3,\*</sup>, Shangxin Yang<sup>2</sup>, Adam M Bell<sup>4</sup>, Michael B Cohen<sup>4</sup>, and Pradip Roy-Burman<sup>1,2,5</sup>

<sup>1</sup>Programs in Genetic, Molecular and Cellular Biology, Keck School of Medicine, University of Southern California, Los Angeles, California

<sup>2</sup>Department of Pathology, Keck School of Medicine, University of Southern California, Los Angeles, California

<sup>3</sup>State Key Laboratory of Molecular Biology and Research Center for Structural Biology, Institute of Biochemistry and Cell Biology, Shanghai Institutes for Biological Sciences, Chinese Academy of Sciences, Shanghai, China

<sup>4</sup>Department of Pathology, The University of Iowa, Iowa City, Iowa

<sup>5</sup>Department of Biochemistry and Molecular Biology, Keck School of Medicine, University of Southern California, Los Angeles, California

### Abstract

Previously we described that bone morphogenetic protein 7 (BMP7) could protect prostate cancer C4-2B cells from serum starvation-induced apoptosis via survivin induction. Here, for the first time, we identify Runx2 as a key regulator of survivin transcription. In C4-2B cells grown normally, suppression of Runx2 reduced survivin expression. Using ChIP assays, two regions of the survivin promoter, –1953 to –1812 (I) and –1485 to –1119 (II) encompassing consensus Runx binding sites were examined. Runx2 was found to be associated with both regions with a stronger affinity to region I. In serum-starved cells neither region was occupied but BMP7 restored the association to region II, not I. In reporter assays, transcription activity by BMP7 was significantly reduced when sequences including binding sites of region II were deleted. Additionally, Runx2 expression was enhanced by BMP7 in these cells. Along with a strong survivin expression, a trend in increased Runx2 expression in human prostate cancer cells and tissues was noted. In the conditional *Pten* knockout mouse, Runx2 level increased with the growth of prostate tumor. The data define a novel role of Runx2 in regulating survivin expression in malignant epithelial cells and identify it as a critical factor in BMP signaling that protects cancer cells against apoptosis.

Users may view, print, copy, download and text and data- mine the content in such documents, for the purposes of academic research, subject always to the full Conditions of use: [http://www.nature.com/authors/editorial\\_policies/license.html#terms](http://www.nature.com/authors/editorial_policies/license.html#terms)

Correspondence: Pradip Roy-Burman, Department of Pathology, Keck School of Medicine, University of Southern California, 2011 Zonal Avenue, Los Angeles, CA 90033. Phone: (323) 442-1184; Fax: (323) 442-3049; royburma@usc.edu.

\*These authors contributed equally to the work.

#### Conflict of interest:

The authors declare no conflict of interest.

#### DISCLOSURE/DUALITY OF INTEREST

The authors declare no financial conflicts of interest.

## Keywords

bone morphogenetic protein 7; survivin; Runx2; apoptosis; prostate cancer

---

## INTRODUCTION

The family of bone morphogenetic protein (BMP) that belongs to the transforming growth factor- $\beta$  (TGF- $\beta$ ) superfamily, was originally identified as osteogenic factors.<sup>1</sup> Soon it became evident that BMP also played important roles in multiple cellular processes such as cell growth, differentiation, migration, apoptosis, and in cancer.<sup>2</sup> We were particularly interested in the role of BMP7 in prostate cancer. BMP7 expression was reported in human metastatic prostate cancer specimens<sup>3</sup> and was most abundant in prostate cancer skeletal metastasis.<sup>4</sup> Furthermore, a regulation of BMP7 expression by androgen was described.<sup>5</sup> Previously, we reported that in the *Pten* conditional deletion mouse model of prostate cancer<sup>6,7</sup> BMP7 protein expression increased with the growth of the prostate adenocarcinoma<sup>8</sup> and correlated with the induction of tumor-promoting heterotypic cell interactions.<sup>9</sup> We also demonstrated that BMP7 could induce epithelial-mesenchymal trans-differentiation in PC-3 human prostate cancer cells and exert a strong protection against stress-induced apoptosis in another aggressive prostate cancer cell line, C4-2B.<sup>8</sup> In C4-2B cells under serum starvation, the effect of BMP7 was found to be mediated by survivin, a member of the inhibitor of apoptosis (IAP) protein family. Under serum starvation BMP7 maintained the level of survivin protein but not XIAP of the IAP family or any of the Bcl-2 family members examined in these cells.<sup>8</sup>

Survivin is considered as a cancer therapeutic target as aberrant high expression of survivin was documented in many different types of human cancer.<sup>10</sup> It is thought that survivin over-expression might allow accumulation of mutations in transformed cells and thereby promoting tumor progression. Transcription of the survivin gene that is prominent in the mitosis phase of the cell cycle is also regulated by various growth factors and cytokines.<sup>11</sup>

When we analyzed the human survivin promoter with the TF Search program<sup>12</sup> multiple potential binding sequences for transcription factors were apparent. Among them were sites that could serve to recruit Smad and Runx proteins. The Smad pathway is indeed a canonical pathway for BMP function and we showed earlier that introduction of a dominant negative mutant of Smad 5 could inhibit the activity of the survivin promoter.<sup>13</sup> In mammalian cells, the Runx family, also known as the acute myeloid leukaemia (AML), core-binding factor- $\alpha$  (CBF $\alpha$ ) or polyoma enhancer-binding protein-2 $\alpha$  (PEBP2 $\alpha$ ) family, include three structurally similar members (Runx1, -2 and -3). Runx proteins were described to bind to a common non-DNA binding partner, CBF $\beta$ , to form a heterodimeric complex, the target of which appeared to be a conserved nucleotide sequence.<sup>14,15</sup> Despite their similarities, Runx proteins, however, were determined to play divergent biological roles that were consistent with the distinct phenotypes observed in the corresponding gene knockout in mice.<sup>16</sup>

There is evidence that activated Smad proteins may interact with Runx2, the “master” transcription factor for the differentiation of osteoblasts, in regulating transcriptional activity.<sup>17–19</sup> Considering these sets of existing knowledge, and our earlier demonstration

that BMP-induced Smad signaling is indeed involved in transcriptional activation of the survivin gene in prostate cancer cells, 8 we hypothesized that Runx2 might also be critical in regulation of survivin expression in malignant epithelial cells and consequently required for the anti-apoptotic effect of BMP7 in the C4-2B test system. Hence, among the Runx members, we wished to focus on Runx2 for this study. Here, we describe for the first time that Runx2 interacts with the survivin promoter *in vivo* and it regulates transcription of the survivin gene in C4-2B cells grown under either normal conditions or under serum starvation but with exposure to BMP7. We also show that BMP7 regulates expression of Runx2 in these cells and that in the conditional *Pten* deletion mouse model,<sup>6,7</sup> similar to our previous observation of survivin over-expression,<sup>13</sup> there is a strong correlation of increased Runx2 expression with the prostate tumor growth. In the human prostate cancer specimens, we confirm up-regulation of survivin expression and a readily detectable Runx2 expression.

## MATERIALS AND METHODS

### Materials

Human recombinant BMP7 protein (generously provided by Dr. A. Hari Reddi of University of California Davis or purchased from R&D) was diluted in the 0.1% serum medium and used at concentration of 50 ng/mL in all experiments unless specified otherwise. The survivin gene promoter constructs (pLuc1430 and pLuc649)<sup>20</sup> were generously provided by Dr. Dario Altieri of the University of Massachusetts. The pAML1-ETO vector<sup>21</sup> was kindly provided by Dr. Baruch Frenkel of the University of Southern California. The pCMV5 empty vector was used as a control in all experiments using pAML1-ETO.

### Cell Culture and Transient Transfection

C4-2B cells were maintained in culture medium with 10% fetal bovine serum (FBS) as described previously.<sup>8</sup> For serum starvation, the cells were cultured in medium containing 0.1% FBS. Transient transfection was performed with either Tfx-20/50 Reagent (Promega) or lipofectamine 2000 (Invitrogen) according to the manufacturer's instruction.

### Small Interfering RNA (siRNA) Treatment

C4-2B cells were seeded in six-well plates at  $1.5 \times 10^5$  cells per well and grown in the antibiotics-free medium for two days to reach 30–50% confluence. The cells were transfected with siRNA duplexes at final concentrations of 50 nmol/mL. control siRNA duplex [sense 5'-UUCUCCGAACGUGUCACG UdTdT, 3'-Fluorescein labeled; antisense 5'-ACGUGACACGUUCGGAGAA dTdT] and siRNA specific for Runx2<sup>22</sup> [sense 5'-CUCUGCACCAAGUCCUUU dTdT; antisense 5'-AAAAGGACUUGGUGCAGAG dTdT] were purchased from Qiagen. siRNA for human survivin [sense 5'-CUGGACAGAGAAAGAGCCAdTdT; antisense 5'-UGGCUCUUUCUCUGUCCAG dTdT] was produced by Ambion.

### Terminal Deoxynucleotidyltransferase-mediated dUTP Nick End Labeling (TUNEL) Assay

The TUNEL assay was carried out to measure apoptotic cell proportion using APO-BrdU kit (Phoenix Flow Systems). Cell death was also monitored under light microscope every day during cell culture for a period of 24 to 96 hours after treatment or transfection.

### Chromatin Immunoprecipitation (ChIP) Assay

Crosslinking ChIP assay was performed using ChIP-IT Express kit (Active Motif) following the manufacturer's instruction. Formaldehyde cross-linking was performed for 10 minutes. Nuclei were pelleted and chromatin was sheared with sonication using VirTis Virsonic 600. Approximately 9  $\mu$ g sheared chromatin was immunoprecipitated with 4  $\mu$ g anti-PEBP2 $\alpha$  antibody (M-70X; Santa Cruz) or normal rabbit IgG using magnetic protein G beads. For native ChIP, the experiments were conducted in the same way except that the step of the formaldehyde cross-linking was omitted.<sup>23</sup> The primers designed to amplify various regions of the human survivin gene promoters were as follows: 5'-CGGTTAGCGAGCCAATCAGCA-3' and 5'-ACCATACTACCCCGAAATACTTCATTCT-3' (region I); 5'-GCAATTATCTTTTATTAAATTGACATCG-3' and 5'-GCCCCATTCTTTAATACAGTAACTT-3' (region II); and 5'-GCGTCTTTGAAAGCAGTCGAG-3' and 5'-GGAGCGCACGCCCTCTTA-3' (a control region). All ChIP assays were performed at least three times and the most representative results are illustrated in the figures.

### Generation of Luciferase Reporter Plasmids

The truncated fragment of the survivin promoter (pLuc1270) was generated by PCR amplification using pLuc1430 as a template and using a forward primer 5'-GACACCGACGGATCCAGGCTGAGGCAGGAGAATCGC-3' and reverse primer 5'-GAATTCTAGAAGCTTAA ATCTGGCGGTAA-3'. The DNA fragment was cloned using TA Cloning Kit with One Shot<sup>®</sup> TOP10F' Chemically Competent *E. coli* and subcloned to the BamHI and HindIII sites of pLuc1430.

### Luciferase Reporter Assay

C4-2B cells were seeded in six-well plates at  $2 \times 10^5$  cells per well and grown for two to three days. For serum starvation, cells were pretreated in 0.1% serum medium for 24 hours prior to cell transfection. When cells reached 70% to 80% confluence, 1  $\mu$ g of each reporter constructs and 0.5  $\mu$ g of pSV- $\beta$ -Galactosidase control vector were co-transfected. When needed, 0.5–1.0  $\mu$ g pAML1-ETO or 1  $\mu$ g empty vector was also transfected into the cells along with the reporter constructs and the pSV- $\beta$ -Galactosidase control. The transfected cells were then lysed in 1 $\times$  lysis buffer included in Luciferase Assay System (Promega) at 24 hours post transfection. The lysed supernatants were used for either luciferase assay or  $\beta$ -galactosidase assay as described<sup>13</sup> and the results were normalized to the activity of  $\beta$ -galactosidase.

The expression of AML1-ETO was confirmed by semi-quantative RT-PCR following a reported procedure.<sup>24</sup> The primers used were: forward, AML1-ES: 5'-GAGGGAAAAGCTTCACTCTG-3', and reverse, ETO-E A: 5'-TCGGGTGAAATGTCATTGCC-3', and the thermocycle setup included denaturation at 95°C for 30 sec, annealing at 58°C for 30 sec, and polymerization at 72°C for 90 sec for 40 cycles.

### **RNA Extraction, cDNA Synthesis and Comparative Quantitative PCR**

Total RNA was extracted by TRIzol Reagent (Invitrogen) following manufacturer's protocol and genomic DNA was digested by DNaseI (Ambion). cDNAs were synthesized with 2 µg of total RNA using iScript cDNA Synthesis kit (Bio-Rad). Quantitative PCR analyses for Runx2 expression were carried out with forward primer 5'-CCTCGGAGAGGTACCAGATG-3' and reverse primer 5'-AGGTGAAACTCTTGCTGCA-3' using the Stratagene Mx3000P PCR machine. The reaction mix contained 13 µL of 2× Brilliant SYBR Green QPCR Master Mix (Stratagene) or Faststart Universal SYBR Green Master Mix (Roche) with 1 µL of cDNA in a total volume of 25 µL. GAPDH was used for each sample as control for normalization.

### **Preparation of Whole Cell Lysates of Human Prostatic Cell Lines or Mouse Prostate Tissues and Western Blot Analysis**

Whole cell lysates of prostatic cell lines and the mouse prostatic tissues were prepared following the protocols described previously.<sup>8</sup> The antibodies used for Western blot analysis were rabbit anti-PEBP2αA and goat anti-Actin (Santa Cruz), and rabbit anti-survivin (Novus Biologicals).

### **Human Prostate Cancer Specimens and Immunohistochemistry**

Tissue microarrays were constructed using a manual arrayer (Beecher Instruments, WI) from 59 cases of prostate cancer, all adenocarcinomas, diagnosed and graded in the Department of Pathology at University of Iowa Hospitals and Clinics, Iowa City, from 2001 to 2003. Core tissue biopsies (diameter 2.0 mm, height 3–4 mm) were taken from morphologically representative regions of formalin-fixed paraffin-embedded blocks (45 × 20 mm) containing original tissue and arrayed into a regular recipient paraffin block.

An immunoperoxidase reaction for survivin and Runx2 proteins was performed on each case using ABC method. Both primary antibodies for survivin (Lab Vision) and Runx2 (Santa Cruz) were diluted to 1:100 for the analysis. Antigen unmasking was accomplished using citrate buffer (pH 6.0) and a heating method (microwave or preheated steamer). Slides were allowed to cool at room temperature. Nonspecific background staining was prevented by application of horse or goat serum. Sections were covered with primary antiserum, incubated and rinsed. A counterstain of 10% Harris hematoxylin for 3 minutes was used. Negative control slides were prepared by substituting rabbit immunoglobulin. Immunoreactivity for benign and malignant prostate epithelium, as well as stromal cells, was evaluated using both proportion and intensity scores graded from 0 to 3 for a total quantitative score range of 0 to 6. Intensity staining was graded as follows: 0 = no staining, ranging to 3 = strongly positive. Proportion staining was graded as follows: 0 = no staining, 1 = 1–33% of cells positive, 2 = 33 to 66% of cells positive, 3 = over 66% of cells positive. Comparison of expression between malignant and benign epithelium, by assigned grade, and between epithelium and intervening stroma was performed for both proteins.

### Statistical Analysis

All experiments were done in triplicates and repeated at least three times. Statistical comparisons were made by an unpaired two-tailed *t* test.

## RESULTS

### Modulation of Survivin Expression in C4-2B Cells and Their Sensitivity to Apoptosis by AML1-ETO or Runx2 siRNA

Previously we described that survivin expression was elevated by BMP7 in serum starved C4-2B cells, and that increased survivin was associated with the anti-apoptotic effect of BMP7.<sup>8</sup> Thus we were motivated to further investigate the regulation of survivin expression in this cell line. Analysis of the upstream –2.8 kb fragment of the human survivin gene promoter showed the presence of multiple putative Runx2 binding sites within this region.<sup>12,14</sup> To investigate the possible involvement of Runx2 in survivin expression and subsequent cell apoptosis, we first examined the effect of AML1-ETO on C4-2B cells cultured under normal culture conditions. AML1-ETO is encoded by a fusion gene resulted from the translocation (t8:21) which is commonly associated with AML.<sup>21</sup> It represses the expression of Runx domain targets by functioning as a constitutive transcription repressor.<sup>25</sup> C4-2B cells were transfected with various amounts of the AML1-ETO expression vector and the levels of survivin in the transfected cells were determined. As illustrated in Figure 1a, while transfection with 0.5 µg of the plasmid did not cause a significant reduction in survivin expression, the effect was robust when 1 µg of the plasmid DNA was used. The results also showed that pAML1-ETO transfection did result in the expression of the gene in the cells, and that Smad activation or the level of expression of the Runx2 protein was not affected by AML1-ETO expression to any significant extent (Figure 1a). Consistent with the down-regulation of survivin expression, the apoptotic rate of the cells treated with 1 µg plasmid increased to 60% compared to 10% of the untreated cells (Figure 1b).

Considering that AML1-ETO exerts repression on all tested Runx-dependent genes,<sup>26</sup> and that Runx1 and Runx3 proteins are also expressed in C4-2B cell, we further utilized the RNAi technique to examine the specific effect of Runx2. As shown in Figure 1c, at 72 hrs or 96 hrs post-transfection of Runx2 siRNA, Runx2 level was significantly decreased, so did that of survivin. In addition, cells transfected with Runx2 siRNA underwent apoptosis to an extent similar to that of cells transfected with survivin siRNA (Figure 1d). These results implied that Runx2 might be pivotal for survivin expression and therefore potentially critical to block apoptosis of C4-2B cells.

### Runx2 Association with the Survivin Promoter in C4-2B Cells

Multiple putative Runx binding sites on the –2.8 kb fragment of the survivin promoter were identified by TFsearch program<sup>12</sup> with default settings (Figure 2a). ChIP assays were performed in order to examine the association of Runx2 to the promoter. Highly specific primers could be designed to amplify two different regions each containing a fully consensus binding site. These were: –1953 to –1812 region containing the –1853 to –1848 binding site (region I), and –1485 to –1119 region encompassing the –1314 to –1309 binding site (region II). Region II also harbored an 89% homologous sequence at –1391 to

–1386. Specific primers were used to amplify a region (–267 to –76) to serve as a control for the binding study. The specificity of the primer sets was analyzed with the UCSC BLAT server,<sup>27</sup> and further confirmed by sequencing the PCR products. The results obtained with ChIP assays supported *in vivo* occupancy of the survivin promoter by Runx2 in C4-2B cells. For example, when cross-linking ChIP was performed on these cells cultured in full serum medium, interaction of Runx2 with regions I and II was clearly evident (Figure 2b). No significant occupancy of Runx2 at the control region was detected under the conditions used. Native ChIP was then carried out to examine the relative affinities of the two binding regions detected by the cross-linking ChIP. Primarily, occupancy of region I by Runx2 was detected in the native ChIP assay (Figure 2c), implying that the interaction this site was relatively stable while that to the region II was not strong enough to survive the harsh sonication procedure. Since the native ChIP was performed in a way similar to that of cross-linking ChIP except for the fixation step, the results also indicated that chromosome shearing was sufficient to separate regions I and II.

### Runx2-dependence of the Effect of BMP7 on Survivin Expression

In cells cultured in 0.1% serum medium, BMP7 treatment up-regulated survivin expression and protected the cells from apoptosis, which was consistent with our previous results.<sup>13</sup> However, in the presence of optimal AML1-ETO, survivin expression was greatly inhibited (Figure 3a) and protective effect of BMP7 was counteracted (Figure 3b), suggesting involvement of Runx proteins. We performed cross-linking ChIP assays with C4-2B cells that were treated with BMP7 for one day with those of the untreated cells. The ChIP results showed that the extent of interaction of Runx2 to either region I or II was below the level of detection in the serum starved cells (Figure 3c). However, when these cells were treated with BMP7, occupation of Runx2 to region II but not I could be demonstrated. Since the protein level of Runx2 was determined to be similar in both untreated cells and one day BMP7-treated cells (data not shown), the results indicated that exposure to BMP7 enhanced the association of Runx2 with region II. Considering that Runx2 was found to interact with both regions under normal culture conditions, these results also indicated that the regulation of survivin transcription might be different under varying cellular environment.

The effect of Runx2 on the survivin promoter was further investigated with luciferase reporter assays. A luciferase reporter construct pLuc1430 20 was used in our previous study to assess the effect of Smad signaling on the survivin promoter activity.<sup>13</sup> To further evaluate the sequences immediately downstream of –1430, we constructed pLuc1270 in which the potential Runx- and Smad- binding sites of region II was deleted (Figure 3d, upper part). A shorter construct pLuc649 was also included in this study. As illustrated in the lower part of Figure 3d, the transcriptional activity of pLuc1430 increased over 200% after 24 hours of BMP7 treatment in serum starved cells, while under the similar conditions pLuc1270 displayed a relatively much smaller response, and pLuc649 practically failed to respond to BMP7. This observation suggested that the –1430 to –1271 region might be important for the effect of BMP on survivin transcription. As Smad-interacting sequences are juxtaposed in this region and we showed earlier that activated Smad was indeed involved in BMP-induced survivin expression,<sup>13</sup> we introduced AML1-ETO to the luciferase reporter assays to examine the role of Runx2 in response to BMP7 treatment in the serum starved

cells (Figure 3e). When AML1-ETO was present, the effect of BMP7 on the promoter activity of pLuc1430 was indeed strongly inhibited in a dose dependent manner. AML1-ETO had no significant negative effect on the activity of pLuc1270 at 0.5  $\mu$ g, although there was a slight inhibitory effect noted at 1  $\mu$ g concentration, and the activity of pLuc649 was not affected by AML1-ETO. These results suggested a lack of functionally prominent Runx interaction sites downstream of -1270 on the survivin promoter.

### Induction of Runx2 Expression by BMP7 in C4-2B Cells

It was reported that Runx2 expression could be positively influenced by BMP2 or BMP7 in mouse chondrocyte and myoblast cells 28–31 and in human pancreatic cancer cells.<sup>32</sup> Interestingly, in differentiating fibroblasts Runx2 was reported to bind to a repressive element within its own promoter to autoregulate gene transcription.<sup>30,31</sup> We examined the effect of BMP7 on Runx2 expression in serum starved C4-2B cells by quantitative PCR. During the first 4 hours post BMP7 treatment, the Runx2 mRNA level peaked at 1 hour and was 3.2-fold of that of the control and then appeared to decline to almost normal levels (Figure 4a). It appeared from Western blot analysis that at this 1 hr time point there was an increase in the level of Runx2 protein (Figure 4b). The effect of BMP7 dose on Runx2 protein expression was also examined at 1 hr post-exposure; the effect appeared to be dose-dependent with the most robust effect observed at 50 ng/mL (Figure 4b).

In our previous study, we found that the elevated survivin protein level continued to persist up to 6 days of BMP7 treatment in starved C4-2B cells.<sup>8</sup> Hence we continued to investigate Runx2 expression every two days up to 6 days post BMP7 treatment. The mRNA level of Runx2 was highest (2.7-fold compared to that of the control cells) on day 2, and then declined to become similar to that of the control cells by day 6 (Figure 4c). The protein level of Runx2 was not significantly different from the controls at day 2 following exposure to BMP7 but increased maximally at day 4 (Figure 4d). Thus, there appeared to be a complex regulation of Runx2 expression by BMP7 in the C4-2B cells. The effect might also be complicated by the constant adjustment of the cells to the stress from serum starvation as well by the factors directly related to Runx2 protein modification, stability, degradation as well as auto-regulation of Runx2 gene expression. Although an overall cell survival is relatively strong in the serum-starved condition in the presence of BMP7 compared to that without added BMP7, there was still a progressive loss of cells in both situations over the period of observation (6 days). In the population of control cells that continued to survive under serum starvation, a trend in increased level of Runx2 protein expression was also noted (Figure 4d).

### Expression of Runx2 in Prostate Cancer Cells and Tissues

Considering the important role of Runx2 on survivin expression and cell survival, we examined Runx2 expression in various human prostatic cell lines. As shown in Figure 5a, the expression in the immortalized “normal” MLC and benign BPH-1 prostate cell lines was practically undetected, whereas all prostate cancer cell lines examined, in particular C4-2B and LNCaP, showed a robust expression.



By immunohistochemistry we demonstrate the expression of both survivin and Runx2 proteins in malignant and benign human prostate epithelium. Survivin expression was found predominantly in cytoplasm, and it was qualitatively and significantly higher in the cancerous epithelium (Figure 5b). Additionally, our data implied a possible trend of decreased expression with higher tumor grade (Table 1). A trend of increased expression of Runx2 (nuclear) in the malignant epithelium relative to the benign epithelium was also noted (Figure 5b), although the analysis could not point to any remarkable changes with respect to Gleason grades (Table 1). It would be necessary to confirm these initial immunohistochemical findings by other more quantitative means, such as Western blot analysis, whenever such means are available. Given the limited cohort size statistical analysis was not performed at this time point. Previously, we showed that survivin expression is progressively increased with the growth of mouse prostate tumors.<sup>13</sup> To determine if a similar change occurs for Runx2, we examined Runx2 expression in prostatic tumors of the conditional *Pten* deletion mouse model. Western blot analysis showed that Runx2 levels in anterior prostate (AP) were gradually increased with the tumor growth in the mutant mice ranging in age from 1.6 to 11 months while the levels remained consistently low in the normal tissues of the normal littermate controls (Figure 5c), similar to what was observed for BMP7 and survivin.<sup>8,13</sup> Additionally, each prostatic lobe obtained from the 11-month-old *Pten* knockout mouse was examined. In all three lobes, anterior, ventral and dorsolateral, Runx2 expression was remarkably higher in tumored tissues as compared to the corresponding tissues in the littermate controls, although the expression levels appeared to vary from lobe to lobe (Figure 5d). It is recognized that epithelial cells in the various lobes of the mouse prostate differ in the height of the epithelium, amount of epithelial infolding, and the size of the nuclei.<sup>33</sup> The changes between normal and tumor-bearing lobes, however, remain striking. This type of distinctive changes in Runx2 expression, on the other hand, was not apparent from the human prostate cancer specimens. The apparent differences between human and mouse prostate cancer specimens could be due to multiple parameters, such as, variations between species, increased homogeneity of cancer cells in the genetically engineered mouse model over the complex heterogeneity of the sporadic human cancer, and the differences in the techniques used, namely, Western blots for the mouse tissues and immunohistochemistry for the human tissues.

## DISCUSSION

The survivin gene promoter could be a cancer-specific promoter as expression of survivin is documented in nearly all human tumors with minimal or no expression in most of the normal adult tissues with the exception of hematopoietic cells.<sup>10</sup> The basal transcriptional requirements of survivin gene expression have been defined to include Sp1 sites.<sup>20</sup> With ChIP assays we show that Runx2 can interact with at least two regions (regions I and II) in the survivin promoter in C4-2B cells cultured under normal conditions with the association with region I being relatively stronger. When the cells are deprived of serum, these regions remain free of bound Runx2. However, upon BMP7 stimulation, Runx2 localization to region II, but not to region I, is rescued in the serum starved cells. Thus, there seems to be a differential utilization of up-stream promoter sequences for survivin transcription *in vivo* in response to BMP signaling. The elevated survivin expression is unlikely to be related to cell

cycle as no significant changes in the number of cells at G2-M phase were apparent when the cells were treated with BMP7.<sup>13</sup> The scenario projects a complex and dynamic Runx2 interaction with the survivin promoter for the regulation of this important gene activity in cancer cells.

In analysis of reporter gene activity, a putative role for region II is indicated as well. BMP7 substantially enhanced the promoter activity of pLuc1430 which retained the full complements of region II. However, when a truncated construct (pLuc1270) that lacks the stretch of up-stream 160 nucleotide sequences including the Runx binding sites of region II was used, the BMP7 effect was significantly reduced. It should be noted that region II not only harbors Runx binding sites, but also carries multiple Smad binding elements, and, in fact, we described earlier that transcription of the pLuc1430 promoter was Smad-dependent with respect to the BMP effect.<sup>13</sup> It was reported that Runx proteins may indeed recruit Smads to specific subnuclear foci that are coupled to active transcription.<sup>34</sup> Furthermore, in BMP2-induced osteoblast differentiation, Smad and Runx2 appeared to be structurally coupled in rendering a biological signal.<sup>19</sup> Therefore, it is likely that in BMP-induced activation of survivin gene transcription in the malignant epithelial cells such an interaction between Runx2 and Smad may also be occurring for the recruitment of the complex to the appropriate responsive elements. The details of these interactions and their sequence specificity, however, remain to be elucidated.

BMP7 enhancement of Runx2 binding to the survivin promoter may be influenced by multiple other factors. For example, the ability of Runx2 to bind DNA has been reported to be influenced by both phosphorylation<sup>35,31,36</sup> and acetylation.<sup>31</sup> There are factors, such as HDAC4 that may bind to Runt domain of Runx2 to inhibit its activity.<sup>37</sup> Finally, the biological function of Runx2 is dependent on the mechanisms that facilitate nuclear translocation of this and related molecules.

Besides the dynamics of the recruitment of Runx2 to the various sites on the survivin promoter in the cancer cells under diverse cellular environments, we propose that the molecular basis of over-expression of survivin may also be linked to Runx2 levels in cancer. Runx2 mRNA level is reported to be significantly increased in human pancreatic ductal adenocarcinoma tissues<sup>32</sup> and esophageal squamous cell carcinoma.<sup>38</sup> Runx2 expression has also been implicated in bone metastasis of breast cancer,<sup>39</sup> and in human prostate cancer tissues and cells lines the expression of Runx2 protein has been reported.<sup>40</sup> Here we describe elevated expression of Runx2 protein in human prostate cancer cell lines relative to non-tumorigenic cell lines. Most remarkably, in a relatively homogeneous model system of prostate tumor, namely the conditional *Pten* deletion mice,<sup>6,7</sup> we demonstrate a strong correlation between increased Runx2 levels with the growth of the tumor, an observation that is very similar to what we described for survivin protein levels in the same model.<sup>13</sup> Compared to this cancer of the mouse model, human prostate cancer is, however, highly heterogeneous with diversity in the cellular types. Still, consistent with previous observations with a variety of cancers, we confirm that there is an overall and apparently significant elevation in the level of survivin protein expression in the human prostate cancer specimens relative to either benign epithelium or the surrounding stroma. Runx2 expression is also readily detected in these cancer tissues. Both malignant and benign epithelia appear

to express Runx2 significantly more than the stroma, and a tendency of higher expression in malignant relative to benign tissues is noted. Perhaps, to reach or maintain a threshold level is what is needed to amplify the Runx2 activity in the cancer cells. It would be important now to critically examine intracellular Runx2 protein modifications, stability, and parameters of nuclear translocation to correlate with the potential functional attributes of this important transcription factor in neoplastic cells.

Finally, we show that in the serum-starved C4-2B cancer cells, BMP7 treatment enhances Runx2 level, an effect that is likely to increase responsiveness of the cells to BMP signaling to diverse biological functions including gain in the potential for survival. Since there is detectable early transcriptional up-regulation of Runx2 as well as late increases in the level of this protein, the observed BMP7 effect may be both direct and indirect. For instance, BMP2 is described to inhibit Smurf-mediated ubiquitination and degradation of Runx2 by stimulating p300-mediated Runx2 acetylation.<sup>31</sup> It is possible that, in addition to its action on Runx2 transcription, BMP7 may, perhaps influence Runx2 level in a similar way. Taken together, our results indicate that among various factors that determine cancer-selective activation of the survivin promoter, Runx2 is an important molecular entity and that Runx2 threshold or activation may be linked to tumor cell survival and cancer progression.

## ACKNOWLEDGEMENTS

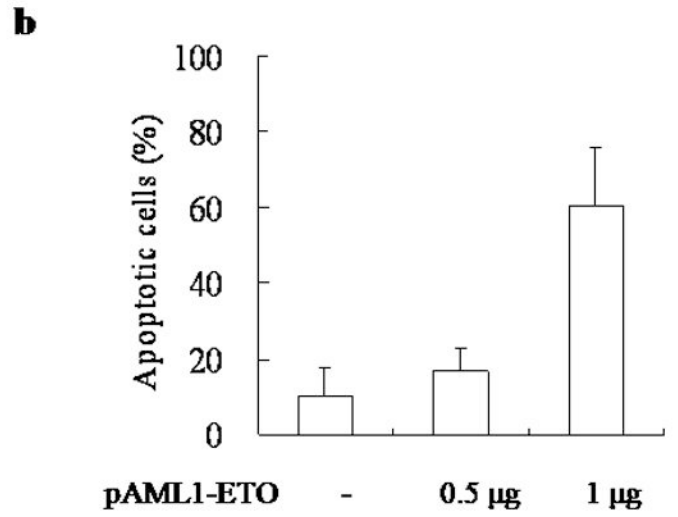
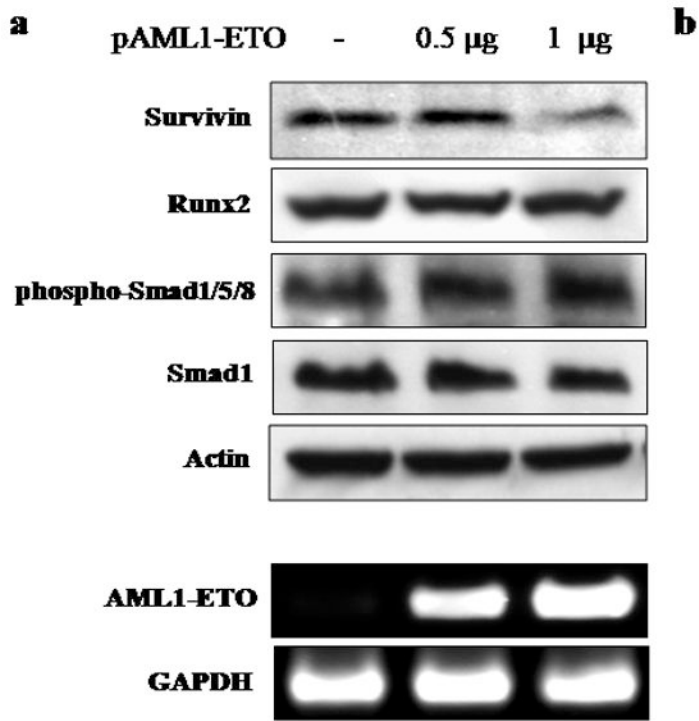
This study was supported by NIH grants RO1 CA113392 and NIH RO1 CA59705 (to P. Roy-Burman). We thank Dr. Dario C. Altieri, Dr. A. Hari Reddi, and Dr. Baruch Frankel for the gift of various reagents used in this work, and to Dr. Young-Ho Lee and all members of the Roy-Burman laboratory for their support in various aspects of this study.

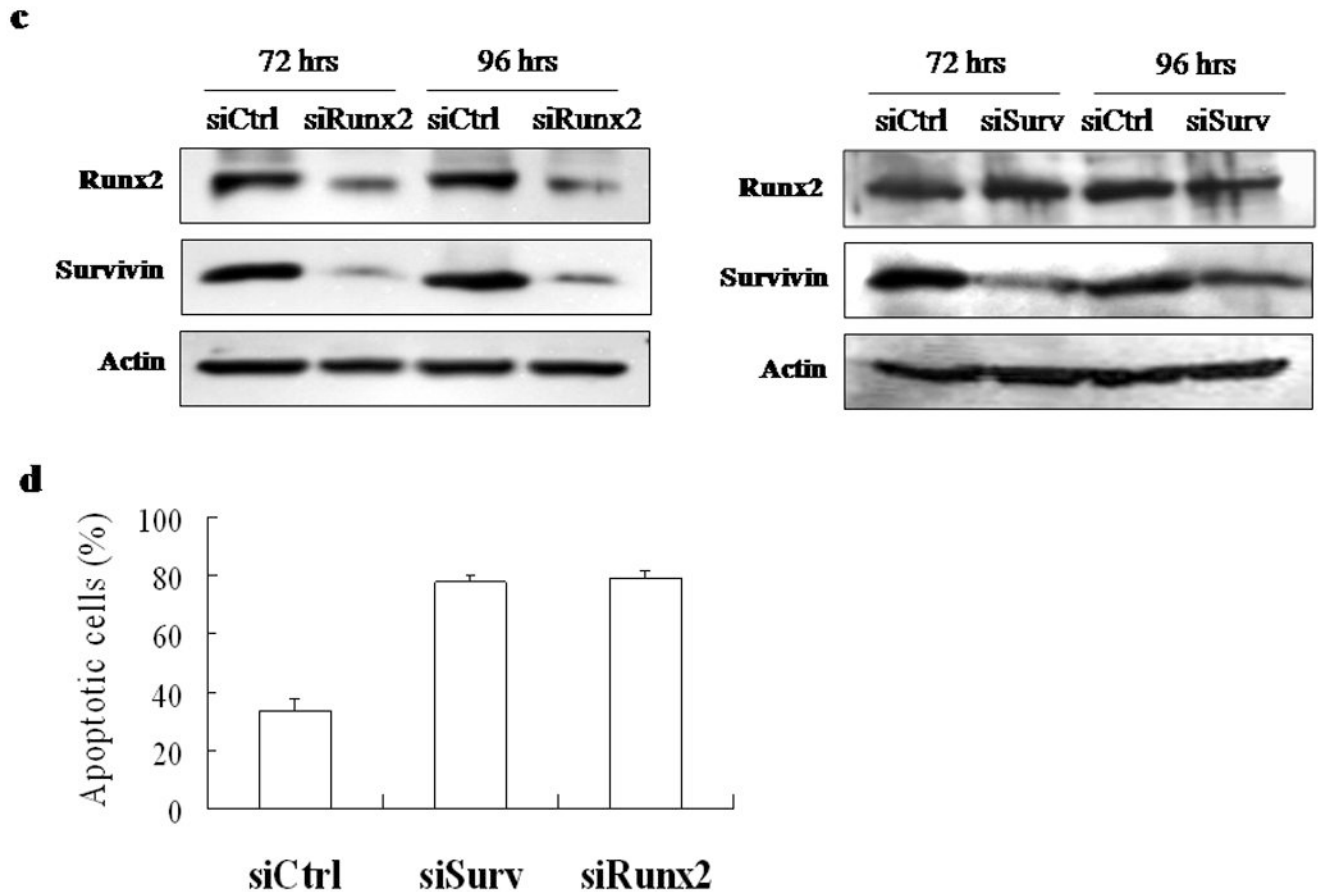
## REFERENCES

1. Celeste AJ, Iannazzi JA, Taylor RC, Hewick RM, Rosen V, Wang EA, et al. Identification of transforming growth factor beta family members present in bone-inductive protein purified from bovine bone. *Proc Natl Acad Sci U S A*. 1990; 87(24):9843–9847. [PubMed: 2263636]
2. Ducy P, Karsenty G. The family of bone morphogenetic proteins. *Kidney Int*. 2000; 57(6):2207–2214. [PubMed: 10844590]
3. Bobinac D, Maric I, Zoricic S, Spanjol J, Dordevic G, Mustac E, et al. Expression of bone morphogenetic proteins in human metastatic prostate and breast cancer. *Croat Med J*. 2005; 46(3): 389–396. [PubMed: 15861517]
4. Masuda H, Fukabori Y, Nakano K, Takezawa Y, T CS, Yamanaka H. Increased expression of bone morphogenetic protein-7 in bone metastatic prostate cancer. *Prostate*. 2003; 54(4):268–274. [PubMed: 12539225]
5. Masuda H, Fukabori Y, Nakano K, Shimizu N, Yamanaka H. Expression of bone morphogenetic protein-7 (BMP-7) in human prostate. *Prostate*. 2004; 59(1):101–106. [PubMed: 14991870]
6. Wang S, Gao J, Lei Q, Rozengurt N, Pritchard C, Jiao J, et al. Prostate-specific deletion of the murine Pten tumor suppressor gene leads to metastatic prostate cancer. *Cancer Cell*. 2003; 4(3): 209–221. [PubMed: 14522255]
7. Liao CP, Zhong C, Saribekyan G, Bading J, Park R, Conti PS, et al. Mouse models of prostate adenocarcinoma with the capacity to monitor spontaneous carcinogenesis by bioluminescence or fluorescence. *Cancer Res*. 2007; 67(15):7525–7533. [PubMed: 17671224]
8. Yang S, Zhong C, Frenkel B, Reddi AH, Roy-Burman P. Diverse biological effect and Smad signaling of bone morphogenetic protein 7 in prostate tumor cells. *Cancer Res*. 2005; 65(13):5769–5777. [PubMed: 15994952]

9. Yang S, Pham LK, Liao CP, Frenkel B, Reddi AH, Roy-Burman P. A novel bone morphogenetic protein signaling in heterotypic cell interactions in prostate cancer. *Cancer Res.* 2008; 68(1):198–205. [PubMed: 18172312]
10. Altieri DC. Survivin, cancer networks and pathway-directed drug discovery. *Nat Rev Cancer.* 2008; 8(1):61–70. [PubMed: 18075512]
11. Aoki Y, Feldman GM, Tosato G. Inhibition of STAT3 signaling induces apoptosis and decreases survivin expression in primary effusion lymphoma. *Blood.* 2003; 101(4):1535–1542. [PubMed: 12393476]
12. Heinemeyer T, Wingender E, Reuter I, Hermjakob H, Kel AE, Kel OV, et al. Databases on transcriptional regulation: TRANSFAC, TRRD and COMPEL. *Nucleic Acids Res.* 1998; 26(1): 362–367. [PubMed: 9399875]
13. Yang S, Lim M, Pham LK, Kendall SE, Reddi AH, Altieri DC, et al. Bone morphogenetic protein 7 protects prostate cancer cells from stress-induced apoptosis via both Smad and c-Jun NH2-terminal kinase pathways. *Cancer Res.* 2006; 66(8):4285–4290. [PubMed: 16618753]
14. Meyers S, Downing JR, Hiebert SW. Identification of AML-1 and the (8;21) translocation protein (AML-1/ETO) as sequence-specific DNA-binding proteins: the runt homology domain is required for DNA binding and protein-protein interactions. *Mol Cell Biol.* 1993; 13(10):6336–6345. [PubMed: 8413232]
15. Fowler M, Borazanci E, McGhee L, Pylant SW, Williams BJ, Glass J, et al. RUNX1 (AML-1) and RUNX2 (AML-3) cooperate with prostate-derived Ets factor to activate transcription from the PSA upstream regulatory region. *J Cell Biochem.* 2006; 97(1):1–17. [PubMed: 16237704]
16. Blyth K, Cameron ER, Neil JC. The RUNX genes: gain or loss of function in cancer. *Nat Rev Cancer.* 2005; 5(5):376–387. [PubMed: 15864279]
17. Hanai J, Chen LF, Kanno T, Ohtani-Fujita N, Kim WY, Guo WH, et al. Interaction and functional cooperation of PEBP2/CBF with Smads. Synergistic induction of the immunoglobulin germline Calpha promoter. *J Biol Chem.* 1999; 274(44):31577–31582. [PubMed: 10531362]
18. Javed A, Afzal F, Bae JS, Gutierrez S, Zaidi K, Pratap J, et al. Specific residues of RUNX2 are obligatory for formation of BMP2-induced RUNX2-SMAD complex to promote osteoblast differentiation. *Cells Tissues Organs.* 2009; 189(1–4):133–137. [PubMed: 18728344]
19. Javed A, Bae JS, Afzal F, Gutierrez S, Pratap J, Zaidi SK, et al. Structural coupling of Smad and Runx2 for execution of the BMP2 osteogenic signal. *J Biol Chem.* 2008; 283(13):8412–8422. [PubMed: 18204048]
20. Li F, Altieri DC. Transcriptional analysis of human survivin gene expression. *Biochem J.* 1999; 344:305–311. [PubMed: 10567210]
21. Meyers S, Lenny N, Hiebert SW. The t(8;21) fusion protein interferes with AML-1B-dependent transcriptional activation. *Mol Cell Biol.* 1995; 15(4):1974–1982. [PubMed: 7891692]
22. Pratap J, Javed A, Languino LR, van Wijnen AJ, Stein JL, Stein GS, et al. The Runx2 osteogenic transcription factor regulates matrix metalloproteinase 9 in bone metastatic cancer cells and controls cell invasion. *Mol Cell Biol.* 2005; 25(19):8581–8591. [PubMed: 16166639]
23. Roca H, Franceschi RT. Analysis of transcription factor interactions in osteoblasts using competitive chromatin immunoprecipitation. *Nucleic Acids Res.* 2008; 36(5):1723–1730. [PubMed: 18263612]
24. Yan M, Kanbe E, Peterson LF, Boyapati A, Miao Y, Wang Y, et al. A previously unidentified alternatively spliced isoform of t(8;21) transcript promotes leukemogenesis. *Nat Med.* 2006; 12(8): 945–949. [PubMed: 16892037]
25. Wildonger J, Mann RS. The t(8;21) translocation converts AML1 into a constitutive transcriptional repressor. *Development.* 2005; 132(10):2263–2272. [PubMed: 15829516]
26. Ning YM, Robins DM. AML3/CBFalpha1 is required for androgen-specific activation of the enhancer of the mouse sex-limited protein (Slp) gene. *J Biol Chem.* 1999; 274(43):30624–30630. [PubMed: 10521447]
27. Kent WJ. BLAT--the BLAST-like alignment tool. *Genome Res.* 2002; 12(4):656–664. [PubMed: 11932250]
28. Lee KS, Kim HJ, Li QL, Chi XZ, Ueta C, Komori T, et al. Runx2 is a common target of transforming growth factor beta1 and bone morphogenetic protein 2, and cooperation between

- Runx2 and Smad5 induces osteoblast-specific gene expression in the pluripotent mesenchymal precursor cell line C2C12. *Mol Cell Biol.* 2000; 20(23):8783–8792. [PubMed: 11073979]
29. Leboy P, Grasso-Knight G, D'Angelo M, Volk SW, Lian JV, Drissi H, et al. Smad-Runx interactions during chondrocyte maturation. *J Bone Joint Surg Am.* 2001; 83-A(Suppl 1)(Pt 1):S15–S22. [PubMed: 11263661]
  30. Tou L, Quibria N, Alexander JM. Transcriptional regulation of the human Runx2/Cbfa1 gene promoter by bone morphogenetic protein-7. *Mol Cell Endocrinol.* 2003; 205(1–2):121–129. [PubMed: 12890574]
  31. Jeon EJ, Lee KY, Choi NS, Lee MH, Kim HN, Jin YH, et al. Bone morphogenetic protein-2 stimulates Runx2 acetylation. *J Biol Chem.* 2006; 281(24):16502–16511. [PubMed: 16613856]
  32. Kaye H, Jiang X, Keleg S, Jesnowski R, Giese T, Berger MR, et al. Regulation and functional role of the Runt-related transcription factor-2 in pancreatic cancer. *Br J Cancer.* 2007; 97(8):1106–1115. [PubMed: 17876328]
  33. Roy-Burman P, Wu H, Powell WC, Hagenkord J, Cohen MB. Genetically defined mouse models that mimic natural aspects of human prostate cancer development. *Endocr Relat Cancer.* 2004; 11(2):225–254. [PubMed: 15163300]
  34. Zaidi SK, Sullivan AJ, van Wijnen AJ, Stein JL, Stein GS, Lian JB. Integration of Runx and Smad regulatory signals at transcriptionally active subnuclear sites. *Proc Natl Acad Sci U S A.* 2002; 99(12):8048–8053. [PubMed: 12060751]
  35. Selvamurugan N, Shimizu E, Lee M, Liu T, Li H, Partridge NC. Identification and characterization of Runx2 phosphorylation sites involved in matrix metalloproteinase-13 promoter activation. *FEBS Lett.* 2009; 583(7):1141–1146. [PubMed: 19264160]
  36. Wee HJ, Huang G, Shigesada K, Ito Y. Serine phosphorylation of RUNX2 with novel potential functions as negative regulatory mechanisms. *EMBO Rep.* 2002; 3(10):967–974. [PubMed: 12231506]
  37. Vega RB, Matsuda K, Oh J, Barbosa AC, Yang X, Meadows E, et al. Histone deacetylase 4 controls chondrocyte hypertrophy during skeletogenesis. *Cell.* 2004; 119(4):555–566. [PubMed: 15537544]
  38. Tonomoto Y, Tachibana M, Dhar DK, Onoda T, Hata K, Ohnuma H, et al. Differential expression of RUNX genes in human esophageal squamous cell carcinoma: downregulation of RUNX3 worsens patient prognosis. *Oncology.* 2007; 73(5–6):346–356. [PubMed: 18500170]
  39. Barnes GL, Hebert KE, Kamal M, Javed A, Einhorn TA, Lian JB, et al. Fidelity of Runx2 activity in breast cancer cells is required for the generation of metastases-associated osteolytic disease. *Cancer Res.* 2004; 64(13):4506–4513. [PubMed: 15231660]
  40. Brubaker KD, Vessella RL, Brown LG, Corey E. Prostate cancer expression of runt-domain transcription factor Runx2, a key regulator of osteoblast differentiation and function. *Prostate.* 2003; 56(1):13–22. [PubMed: 12746842]





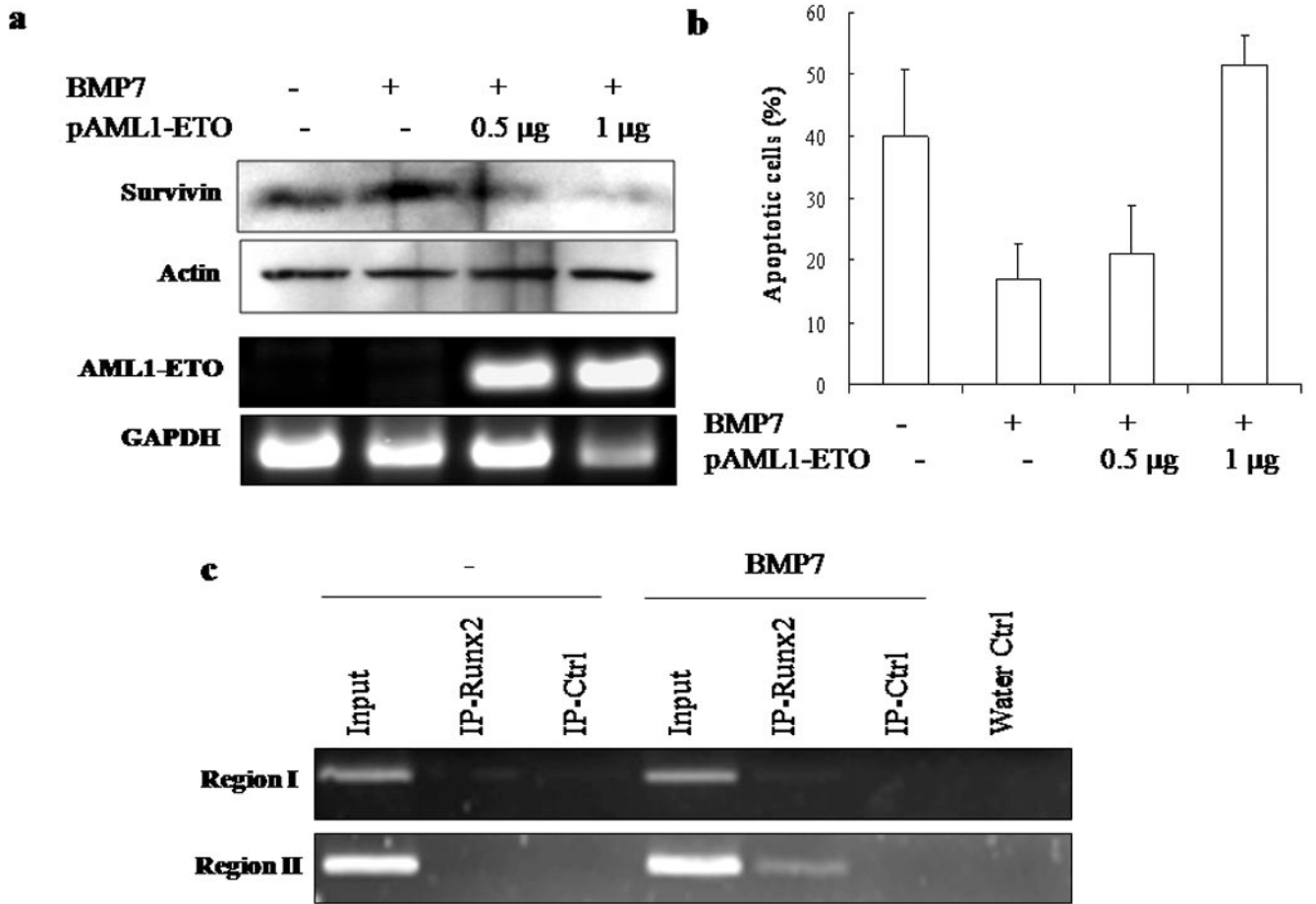
**Figure 1.**

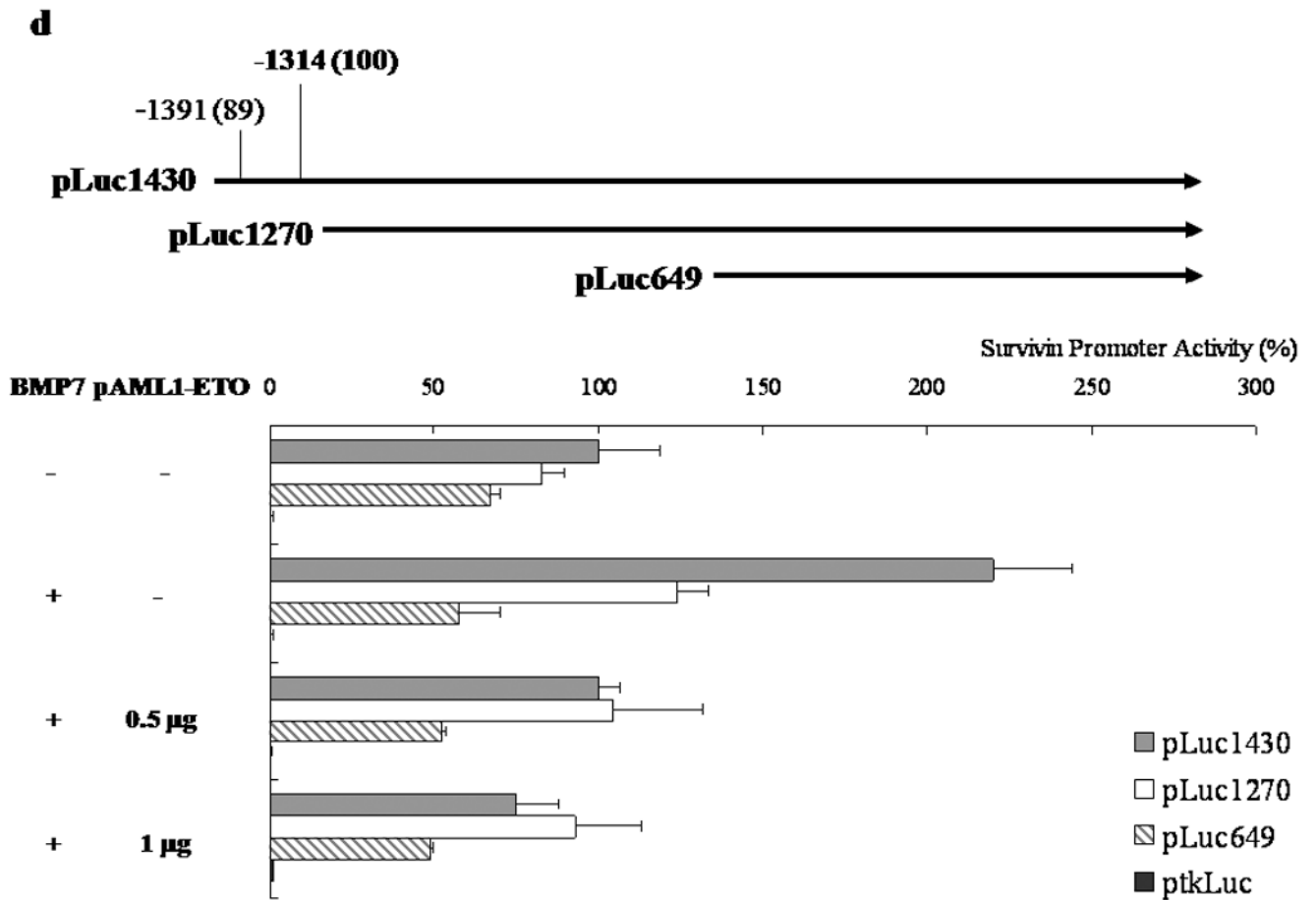
Downregulation of survivin expression and induction of cell apoptosis by AML1-ETO or Runx2 siRNA in C4-2B cells. **(a)** Effect of AML1-ETO on survivin expression. C4-2B cells at 50–70% confluence were transfected with 0.5  $\mu$ g or 1  $\mu$ g pAML1-ETO per well in 6-well plates. The expression levels of survivin in the cells at 48 hours post transfection were analyzed with Western Blot and compared with those in control cells transfected with the pCMV5 empty vector. Equal loading of the cells lysates was shown using actin as a control. The expression of AML1-ETO in the transfected cells was determined by semi-quantitative RT-PCR using GAPDH expression as control. **(b)** Induction of apoptosis by expression of AML1-ETO. C4-2B cells transfected with indicated amount of pAML1-ETO were subjected to TUNEL assay. Compared to control cells or cells transfected with 0.5  $\mu$ g pAML1-ETO, cells treated with 1  $\mu$ g of pAML1-ETO had significantly higher apoptotic rate ( $P < 0.05$ ). **(c)** Reduction of survivin expression in cells treated with Runx2 siRNA (siRunx2) or survivin siRNA (siSurv). C4-2B cells at 30–50% confluence were transfected with siSurv, siRunx2 or control siRNA (siCtrl) at a final concentration of 50 nmol/mL. The protein levels of Runx2 and survivin were examined with Western blot. Treatment of siRunx2 led to significantly decreased levels of Runx2 and survivin, while siSurv reduced the protein level of survivin but not Runx2. **(d)** Induction of cell apoptosis by siRunx2 or siSurv. The apoptotic rates of the cells at 4 days post-transfection were determined with TUNEL assay.





calculated.<sup>12</sup> Underscored regions I and II were analyzed by ChIP assays for which a region marked as *Ctrl* served as negative control for the binding assays. The nucleotide sequence encompassing region I and region II is presented underscoring the theoretical Runx and Smad interacting elements. Runx sites are indicated in bold and underlined with the score of conservation in the parenthesis. The unmatched nucleotide is italicized. Smad elements, 29,34 in italics, are also underlined. **(b)** Detection of Runx2 binding to regions I and II with the cross-linking ChIP assay. The immunoprecipitates were subjected to PCR analysis to determine the binding affinity. **(c)** Detection of Runx2 binding to region I with native ChIP assay.

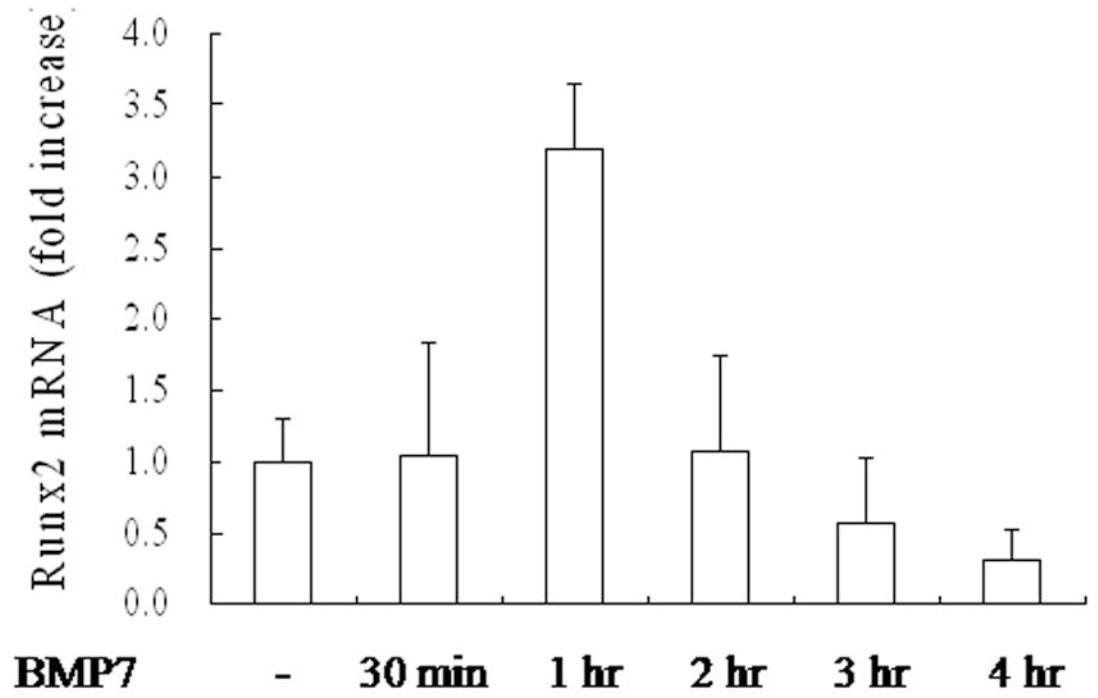
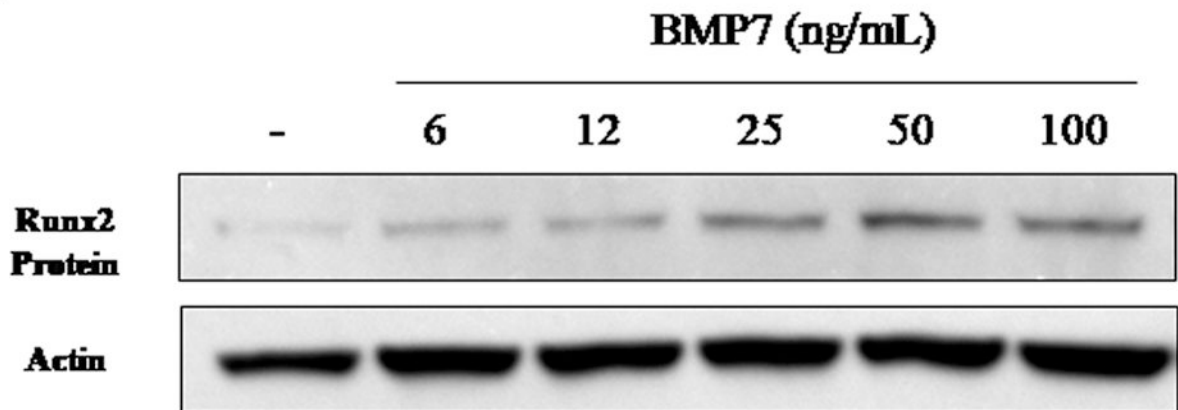


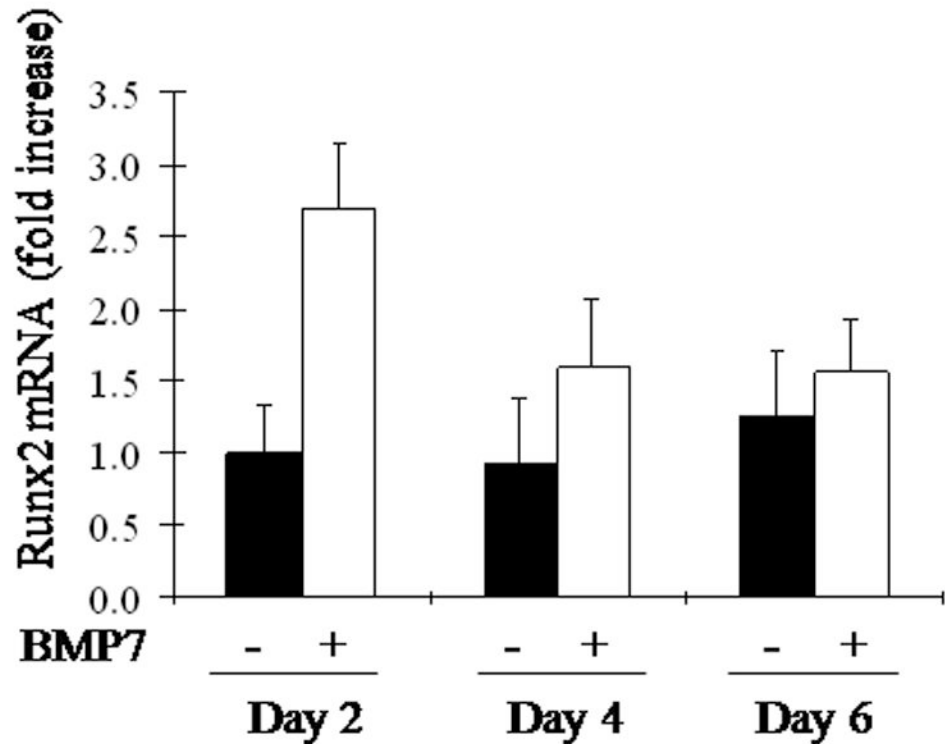
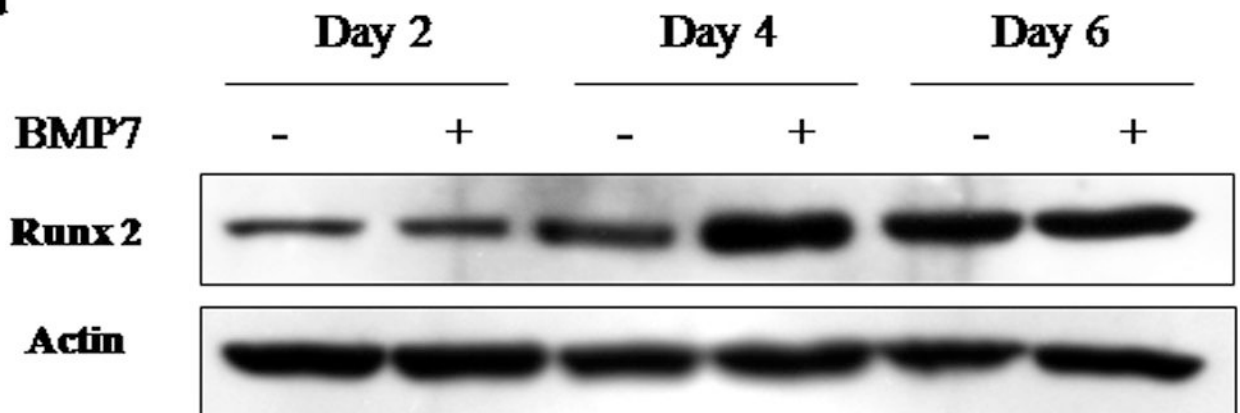


**Figure 3.**

Effect of BMP7 on survivin expression and binding of Runx2 to survivin promoter in serum starved C4-2B cells. **(a)** Effect of BMP7 on survivin expression. C4-2B cells were pretreated with medium containing 0.1% serum for 24 hours followed by supplementation of BMP7 with or without transfection of pAML1-ETO. The expression levels of survivin protein in the cells at 48 hours post-transfection were compared to the corresponding controls. Equal loading of the cells lysates was determined using actin levels. Semi-quantitative RT-PCR was used to determine the expression of the transfected AML1-ETO gene. **(b)** Suppression of anti-apoptotic effect of BMP7 by AML1-ETO. C4-2B cells cultured in 0.1% serum with or without BMP7 treatment were transfected with indicated amount of pAML1-ETO and subjected to TUNEL assay. BMP7 treatment significantly reduced cell apoptosis ( $P < 0.05$ ). However, cells treated with 1  $\mu$ g of pAML1-ETO showed significantly higher apoptotic rate ( $P < 0.01$ ) compared to control cells or cells transfected with 0.5  $\mu$ g pAML1-ETO, indicating that AML-ETO had a counteracting effect and the effect was dose-dependent. **(c)** Increased occupancy of region II of the human survivin promoter by Runx2 in BMP7-treated cells. Serum starved C4-2B cells were cultured with or without BMP7 and the cross-linking ChIP was performed to examine the Runx2 binding to region I (upper panel) and region II (lower panel) of the survivin promoter, respectively. Runx2 binding was only evident for region II of the promoter in cells stimulated with BMP7. **(d)** Luciferase reporter constructs that

contained various lengths of survivin promoter (pLuc1430, pLuc1270, and pLuc649) are shown on the upper panel. The promoter pLuc1430 retained the Runx2 binding sites of the region II as marked. Effect of BMP7 on the activity of the promoter constructs in serum starved C4-2B cells is illustrated in the lower panel. The activity of each construct was analyzed in serum-starved cells with or without supplementation of BMP7. The pAML1-ETO plasmids were also transfected as indicated to examine the effect of Runx2 binding on the promoter activity. The cells were co-transfected with  $\beta$ -galactosidase and all activities are presented relative to the activity of pLuc1430 after normalization with respect to  $\beta$ -galactosidase activity. For pLuc1430 plasmid, p values determined were as follows: +/- BMP7 (<0.01); +BMP7, +/- 0.5  $\mu$ g AML1-ETO (<0.01); +BMP7, +/- 1  $\mu$ g AML1-ETO (<0.001). For pLuc 1270 plasmid, the corresponding values were <0.01, not significant and <0.05, and for pLuc649, none significant. Transfection with ptkLuc (a construct with a minimal promoter) was used as a negative control in the assays.

**a****b**

**c****d****Figure 4.**

Stimulation of Runx2 expression by BMP7 in serum starved C4-2B cells. (a) Examination of Runx2 mRNA levels by quantitative real-time PCR at early time points after BMP7 treatment. The fold increase was determined by 2-delta Ct analysis and normalized to GAPDH expression. The increase in Runx2 at 1 hr post-treatment was significant ( $P < 0.05$ ). (b) Dose-dependent effect by BMP7. BMP7 protein at indicated concentrations was supplemented to C4-2B for an hour after 24 hours of serum starvation and Runx2 protein

levels were analyzed by Western blot. **(c,d)** Examination of changes in Runx2 mRNA or protein levels, respectively, at two-day intervals during the 6 days of BMP7 treatment.

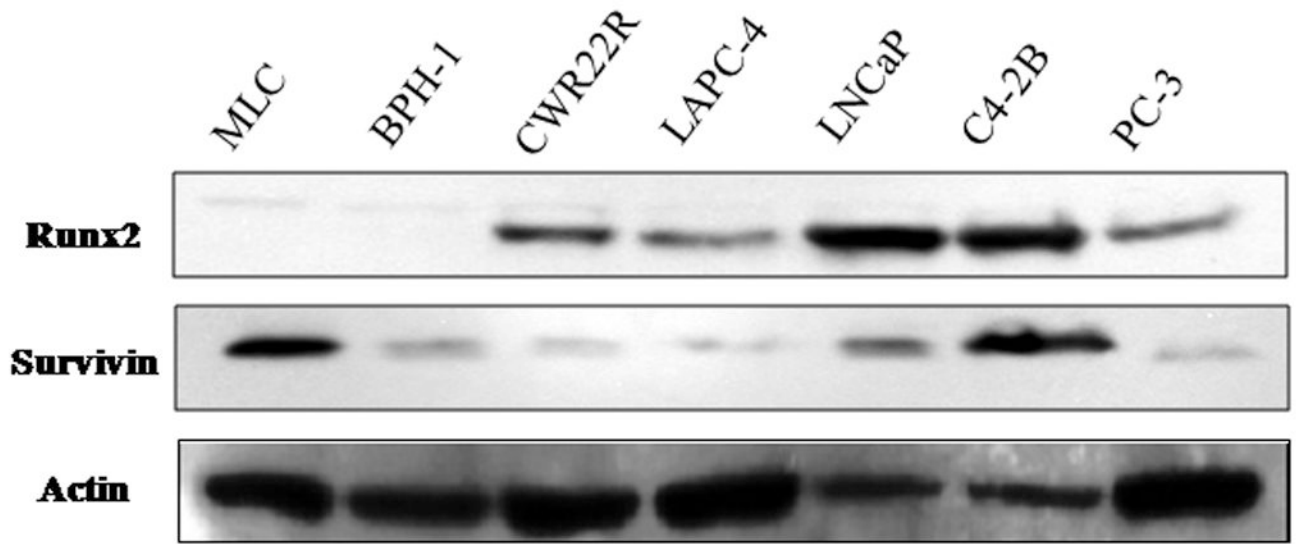
Author Manuscript

Author Manuscript

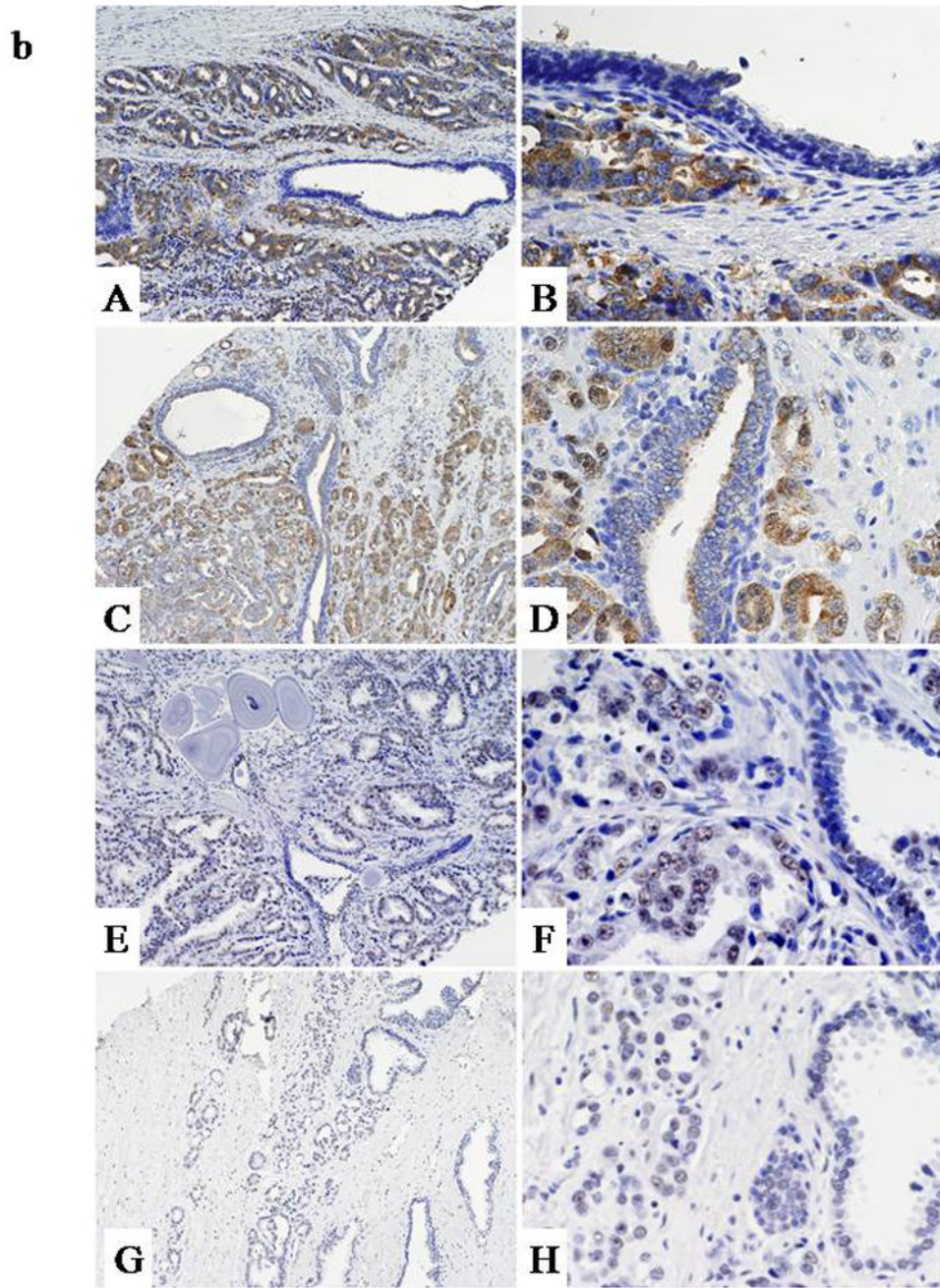
Author Manuscript

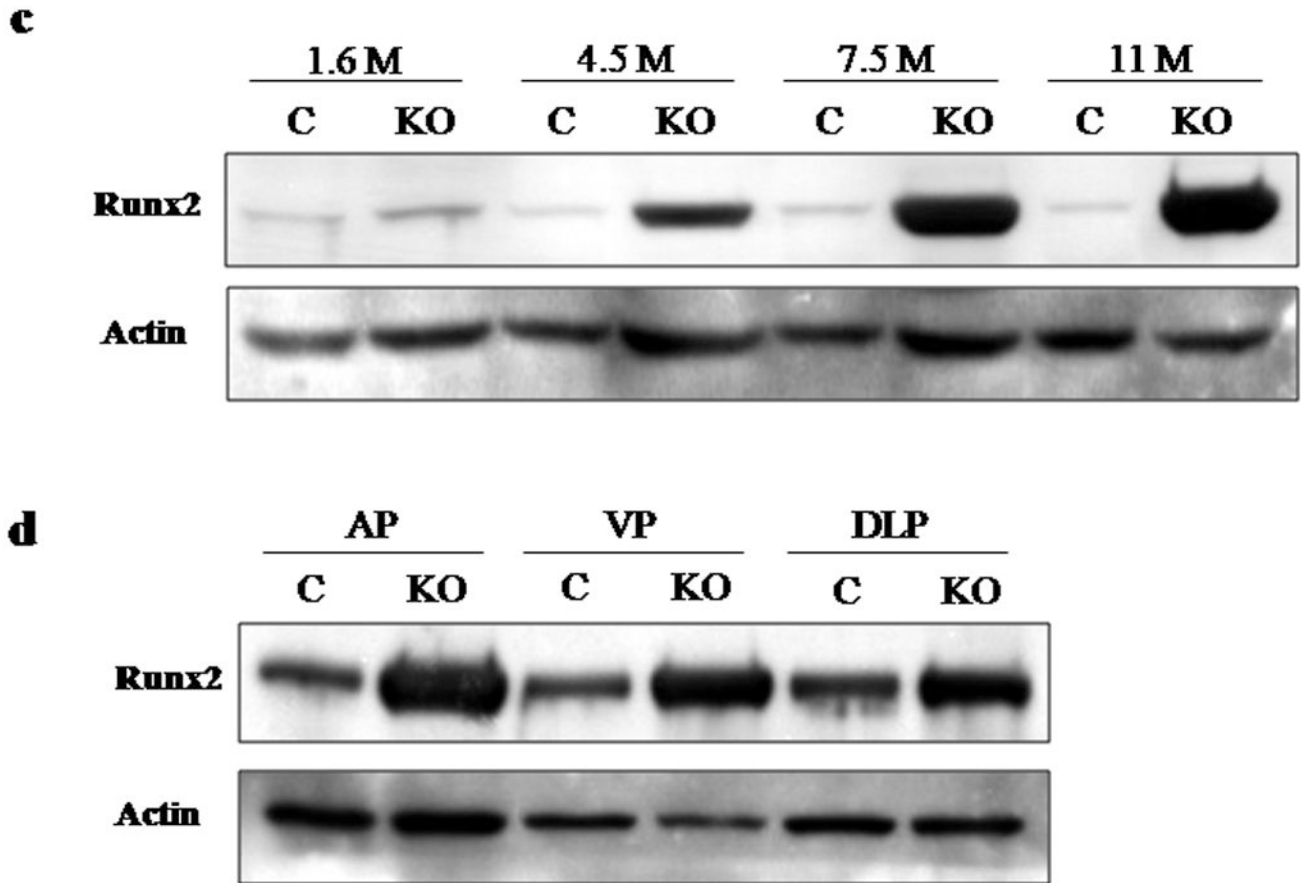
Author Manuscript

**a**









**Figure 5.**

Analysis of Runx2 and survivin expression in prostate cancer cells. (a) Protein expression in various human prostate cancer cell lines in 32 comparison to immortalized normal prostate epithelial (MLC) and benign hyperplastic (BPH-1) cells. For each cell line approximately 40 µg whole cell lysates were assayed by Western blot and actin served as a loading control. (b) Examples of immunostaining in benign and malignant human prostate cancer tissues: A, B, survivin (case 1), strong staining of malignant epithelium relative to adjacent benign epithelium and stroma; C,D, survivin (case 2), similarly strong staining of malignant epithelium relative to benign epithelium and stroma; E,F, Runx2 (case 1), moderate staining of malignant epithelium with weak stromal staining; G,H, Runx2 (case 2), comparable moderate staining of malignant epithelium with weak stromal staining. Benign epithelium displayed low to moderate staining: A,C,E,G, magnification X25, and B,D,F,H, magnification X100. (c) Correlation of Runx2 expression with tumor growth in the conditional *Pten* deletion mouse model of prostate cancer. Runx2 expression in the anterior prostate tissues of the knockout mice (KO) and in the corresponding normal prostate lobe of the littermate controls (C) were analyzed by Western blot. The tissues were obtained from mice at age ranging from 1.6 to 11 months. (d) Detection of increased Runx2 expression by Western blot in tumors from all the lobes from an 11-month old mouse as compared to its

littermate control. AP, VP, DLP denote anterior, ventral, and dorsolateral lobes, respectively.

Author Manuscript

Author Manuscript

Author Manuscript

Author Manuscript

**Table 1**

Summary of immunostaining results with human prostate cancer specimens

Antigen <sup>a</sup>	PCa	BPH	Gleason 3	Gleason 4	Gleason 5	Stroma
Survivin	5.10 (42) <sup>b</sup>	2.67 (18)	5.84 (7)	5.30 (20)	4.47 (15)	0.04 (49)
Runx2	4.47 (34)	3.52 (23)	4.50 (6)	4.52 (21)	4.29 (7)	0.90 (39)

<sup>a</sup> Antigen expression was examined in the following histopathologic areas: PCa, prostate cancer; BPH, adjacent benign prostatic hyperplasia; Gleason 3-5, Gleason grades of 3 to 5; and Stroma, stromal cells in the specimen.

<sup>b</sup> Combined staining score is shown with the number of cases indicated within parenthesis.