



RESEARCH ARTICLE

REVISED

Validation of the peroneal nerve test to diagnose critical illness polyneuropathy and myopathy in the intensive care unit: the multicentre Italian CRIMYNE-2 diagnostic accuracy study [v3; ref status: indexed, <http://f1000r.es/3zk>]

Nicola Latronico¹, Giovanni Nattino², Bruno Guarneri³, Nazzareno Fagoni^{1,4}, Aldo Amantini⁵, Guido Bertolini², and GiVITI Study Investigators

¹Department of Anesthesia and Critical Care Medicine, University of Brescia at Spedali Civili, Brescia, 25123, Italy

²Department of Clinical Epidemiology, IRCCS-Istituto di Ricerche Farmacologiche Mario Negri, Ranica (BG), 24020, Italy

³Department of Neuroscience, Section of Clinical Neurophysiology, Spedali Civili, Brescia, 25123, Italy

⁴Department of Anesthesia and Critical Care Medicine, Section of Neuroanesthesia and Neurocritical Care, University of Brescia at Spedali Civili, Brescia, 25123, Italy

⁵Department of Neuroscience, Section of Clinical Neurophysiology, Azienda Ospedaliero-Universitaria Careggi, Firenze, 50134, Italy

v3 First published: 11 Jun 2014, 3:127 (doi: [10.12688/f1000research.3933.1](https://doi.org/10.12688/f1000research.3933.1))
 Second version: 18 Jun 2014, 3:127 (doi: [10.12688/f1000research.3933.2](https://doi.org/10.12688/f1000research.3933.2))
 Latest published: 21 Jul 2014, 3:127 (doi: [10.12688/f1000research.3933.3](https://doi.org/10.12688/f1000research.3933.3))

Abstract

Objectives: To evaluate the accuracy of the peroneal nerve test (PENT) in the diagnosis of critical illness polyneuropathy (CIP) and myopathy (CIM) in the intensive care unit (ICU). We hypothesised that abnormal reduction of peroneal compound muscle action potential (CMAP) amplitude predicts CIP/CIM diagnosed using a complete nerve conduction study and electromyography (NCS-EMG) as a reference diagnostic standard.

Design: prospective observational study.

Setting: Nine Italian ICUs.

Patients: One-hundred and twenty-one adult (≥18 years) neurologic (106) and non-neurologic (15) critically ill patients with an ICU stay of at least 3 days.

Interventions: None.

Measurements and main results: Patients underwent PENT and NCS-EMG testing on the same day conducted by two independent clinicians who were blind to the results of the other test. Cases were considered as true negative if both NCS-EMG and PENT measurements were normal. Cases were considered as true positive if the PENT result was abnormal and NCS-EMG showed symmetric abnormal findings, independently from the specific diagnosis by NCS-EMG (CIP, CIM, or combined CIP and CIM). All data were centrally reviewed and diagnoses were evaluated for consistency with predefined electrophysiological diagnostic criteria for CIP/CIM.

During the study period, 342 patients were evaluated, 124 (36.3%) were enrolled and 121 individuals with no protocol violation were studied. Sensitivity and specificity of PENT were 100% (95% CI 96.1-100.0) and 85.2% (95% CI 66.3-95.8). Of 23 patients with normal results, all presented normal values on both tests with no false negative results. Of 97 patients with abnormal results,

Open Peer Review

Referee Status:

	Invited Referees	
	1	2
REVISED version 3 published 21 Jul 2014	 report	
REVISED version 2 published 18 Jun 2014	 report	 report
version 1 published 11 Jun 2014		

- 1 **Werner J. Z'Graggen**, Inselspital, Bern University Hospital and University of Bern Switzerland
- 2 **Alexander Semmler**, University Hospital Zurich Switzerland

93 had abnormal values on both tests (true positive), whereas four with abnormal findings with PENT had only single peroneal nerve neuropathy at complete NCS-EMG (false positive).

Conclusions: PENT has 100% sensitivity and high specificity, and can be used as a screening test to diagnose CIP/CIM in the ICU.

Discuss this article

Comments (0)

Corresponding author: Nicola Latronico (nicola.latronico@unibs.it)

How to cite this article: Latronico N, Nattino G, Guarneri B *et al.* **Validation of the peroneal nerve test to diagnose critical illness polyneuropathy and myopathy in the intensive care unit: the multicentre Italian CRIMYNE-2 diagnostic accuracy study [v3; ref status: indexed, <http://f1000r.es/3zkj>]** *F1000Research* 2014, **3**:127 (doi: [10.12688/f1000research.3933.3](https://doi.org/10.12688/f1000research.3933.3))

Copyright: © 2014 Latronico N *et al.* This is an open access article distributed under the terms of the [Creative Commons Attribution Licence](#), which permits unrestricted use, distribution, and reproduction in any medium, provided the original work is properly cited. Data associated with the article are available under the terms of the [Creative Commons Zero "No rights reserved" data waiver](#) (CC0 1.0 Public domain dedication).

Grant information: The study was funded with internal funds of the University of Brescia, Italy and the IRCCS-Istituto di Ricerche Farmacologiche Mario Negri, Italy.

The funders had no role in study design, data collection and analysis, decision to publish, or preparation of the manuscript.

Competing interests: No competing interests were disclosed.

First published: 11 Jun 2014, **3**:127 (doi: [10.12688/f1000research.3933.1](https://doi.org/10.12688/f1000research.3933.1))

First indexed: 23 Jun 2014, **3**:127 (doi: [10.12688/f1000research.3933.2](https://doi.org/10.12688/f1000research.3933.2))

REVISED Amendments from Version 1

The authors have updated Figure 1 (Schematic representation of the peroneal simplified electrophysiological test, PENT) and have corrected a small spelling mistake.

See referee reports

Introduction

Critical illness polyneuropathy (CIP) affects 30% to 50% of the most severely critically ill patients and is the most frequent acute polyneuropathy in the intensive care unit (ICU)¹. CIP is often associated with an acute, primary myopathy called critical illness myopathy (CIM), and both conditions occur in patients with multiple organ dysfunctions and failure (MOF). Indeed, CIP and CIM represent the failure of the neuromuscular system in patients with MOF¹. CIP classically presents as a sensory-motor axonal polyneuropathy causing difficulty in weaning patients from a ventilator, flaccid limbs, and a possible reduction in deep tendon reflexes. Amplitude reduction of both the compound muscle action potential (CMAP) and the sensory nerve action potential (SNAP) is the predominant electrophysiological finding in CIM and CIP; latency and nerve conduction velocity remain normal or are only slightly decreased. CIM is a primary myopathy with distinctive electrophysiological and morphological findings¹. Other features of CIM include increased CMAP duration, normal SNAPs, reduced muscle excitability on direct stimulation and myopathic motor unit potentials on needle electromyography. The clinical features are often the same as for CIP, but sensation, if testable, is normal.

Traditional methods to diagnose CIP and CIM include manual testing of muscle strength using the UK Medical Research Council (MRC) score² or dynamometry³ to demonstrate severe weakness, electrophysiological tests to explore the function of peripheral nerves and muscles, and muscle biopsy¹. Conventional nerve conduction studies (NCS) with measurement of conduction velocity, CMAP and SNAP amplitudes, electromyography (EMG) and other specialised techniques such as direct muscle stimulation or axonal excitability testing may reveal nerve or muscle dysfunction with a high degree of specificity⁴. However, these techniques require specialised personnel, they are time-consuming and they do not allow diagnosis of small intra-epidermal nerve fiber pathology⁵. Conventional NCS-EMG may require up to 90 minutes to be completed⁴. Considering the high prevalence of ICU-acquired neuromuscular disorders, it is unrealistic for conventional NCS-EMG to be used as a large-scale screening tool.

Electrophysiological investigations of peripheral nerves and muscles offer several advantages. They are minimally invasive and easily repeatable, they can be performed at the bedside and the results are immediately available⁶. Electrophysiological alterations indicating CIP or CIM can also be demonstrated in non-collaborative patients. In comatose patients or in those with persisting sedation or septic encephalopathy who develop severe muscle weakness or paralysis after ICU admission, electrophysiological investigations can be performed to avoid unreasonably pessimistic prognosis by identification of CIP or CIM as the cause⁷. Electrophysiological alterations are not only essential to establish the diagnosis of CIP and

CIM, but they also have an earlier onset than clinical signs or they can be documented at an earlier stage⁷⁻¹¹, thus offering the advantage of a timely diagnosis and the opportunity to conduct potentially valuable interventions before structural muscle-nerve alterations become established⁴. CMAP reduction is an early event which precedes clinical signs: its onset can be abrupt within 24 hours of normal findings¹⁰, and it can be observed as early as 48 hours before clinical signs in patients with sepsis¹². Moreover, NCS may also be useful to predict hospital mortality⁹, and short¹³ and long-term morbidity^{8,14,15}. CMAP after direct muscle stimulation (dmCMAP) may precede the development of ICU-acquired weakness by several days¹¹. Therefore there is a need for a rapid, simple, accurate and valid electrophysiological test to identify CIP and CIM early in ICU.

In a previous study called CRIMYNE¹⁰, we found that a simplified electrophysiological investigation, the peroneal nerve electrophysiological test (PENT), had high sensitivity (100%) and moderate specificity (67%) in identifying patients with a diagnosis of CIP or CIM using complete NCS as the reference diagnostic standard. However, the CRIMYNE study had methodological limitations that precluded the acceptance of PENT as a valid screening test in the ICU. Specifically, patients underwent complete NCS only if the PENT was abnormal, thus precluding the possibility of accurately detecting false negative results. Moreover, NCS assessors were not blind to the results of PENT. According to the STARD Statement for reporting studies of diagnostics accuracy, knowledge of the results of the index test can influence the reading of the reference standard, and *vice versa*. Such knowledge is likely to increase the agreement between results of the index test and those of the reference standard, leading to inflated measures of diagnostic accuracy¹⁶.

The accuracy of new diagnostic tests should be evaluated before their introduction into clinical practice, because invalid tests may yield exaggerated and biased results, which may trigger their premature adoption in clinical practice and lead to test overuse, increasing patient risks and costs, or to test underuse, missing opportunities to improve health^{17,18}. Test validation involves comparing the new test with a reference standard, defined as the best available method for establishing the presence or absence of the condition of interest¹⁷. Therefore, we designed the multicentre CRIMYNE-2 study according to rigorous methodology to provide an unbiased evaluation of the accuracy of PENT in diagnosing electrophysiologically-proven CIP and CIM diagnosed using complete NCS-EMG as the reference standard.

Materials and methods

We conducted a prospective observational study between April 2010 and June 2012 in nine medical-surgical Italian ICUs joining the **Margherita-Prosafe Project**, an international research campaign that collects and analyses clinical data on all patients admitted to the participating ICUs¹⁹. The Project, promoted by the **GiViTI** (*Gruppo Italiano per la Valutazione degli Interventi in Terapia Intensiva*, Italian Group for the Evaluation of Interventions in Intensive Care Medicine) is based on an electronic Case Report Form (eCRF), which was extended to collect the data of interest for the CRIMYNE-2 study. Two databases were used: Margherita-Due, supported until December 2010, and Prosafe, released on January

2011. Both databases were organized with a core data set and a supplemental module designed for the CRIMYNE-2 research project.

The core data of the Margherita-Prosafe Project included information related to the patients' condition on admission (demographics, admission diagnoses, comorbidities, surgical status), severity-of-illness scoring systems (Simplified Acute Physiology Score [SAPS II], Glasgow Coma Scale [GCS]); procedures, organ failures and complications arising during the ICU; ICU and hospital outcome. The CRIMYNE-2 module included the electrophysiological variables needed to diagnose CIP and CIM, as well as the final diagnosis concluded by the clinical neurophysiologist (see "Possible diagnoses").

Inclusion criteria were age ≥ 18 years and ICU stay ≥ 3 days, because this patient population is at increased risk of developing CIP and CIM^{1,20}.

Exclusion criteria were a previous history of neuromuscular disorders or chronic conditions associated with neuromuscular disorders (*i.e.*, diabetes, renal failure, chronic alcohol abuse), use of neurotoxic or myotoxic drugs, evidence of altered neuromuscular transmission at repetitive stimulation test either caused by neuromuscular blocking agents or disease, lower limb disorders precluding NCS and EMG (for example edema, fractures, amputation, plaster casts), and terminal conditions. Sedation was not an exclusion criterion, and, if present, was not discontinued nor reduced prior to testing.

In each ICU, the inclusion and exclusion criteria were verified daily by the intensivist in charge for the CRIMYNE-2 study. Patients enrolled were subjected to the index test (PENT) and the reference

diagnostic standard (NCS-EMG) on the same day by two independent clinicians who were blind to the results of the other test. The research team was allowed to exclude patients if another patient in the same ICU was being concomitantly studied.

Ethics statement

The study was approved by the Ethics Committee of each participating centre (protocol number 554/2010). Detailed written information was provided to the patients and family members about the study protocol, the scope of research, and the safety of electrophysiological investigations. Written informed consent was obtained from the patient where appropriate. In case of altered consciousness, the Ethics Committees waived the requirement for consent, as in Italy relatives are not regarded as legal representatives of the patient in the absence of a formal designation²¹. Written informed consent was requested from all surviving patients as soon as they regained their mental competency. All investigations were conducted according to the principles expressed in the Declaration of Helsinki.

The index test: peroneal nerve test (PENT)

All tests were performed and interpreted by a board-certified technician in clinical neurophysiology with adequate clinical experience.

PENT started with the measurement of peroneal nerve CMAP amplitude in one leg (Figure 1). The CMAP was recorded using a pair of surface electrodes: the active electrode was placed on the belly of the extensor digitorum brevis muscle and the indifferent electrode on the distal tendon of the recorded muscle. The peroneal nerve was stimulated over the dorsum of the foot near the ankle, at 7 centimeters from the recording electrodes. The stimulus intensity

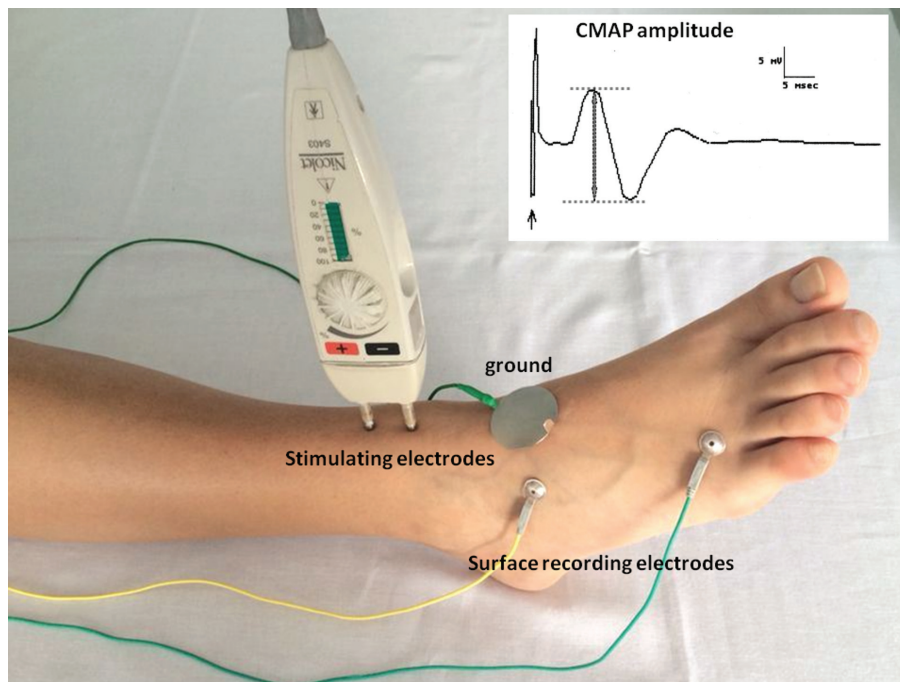


Figure 1. Schematic representation of the peroneal simplified electrophysiological test (PENT). A normal compound muscle action potential (CMAP) amplitude is shown.

was gradually increased until the maximal CMAP was obtained. The CMAP amplitude was measured as the maximum voltage difference between the negative and positive peaks (“peak to peak”).

If the PENT was normal, the contra-lateral peroneal nerve was investigated. A normal condition was established if the CMAP amplitudes of both peroneal nerves were normal. An abnormal condition was identified if the peroneal nerve CMAP amplitude was reduced below the normal limits of the participating centre in at least one leg.

The reference diagnostic standard: complete NCS-EMG

NCS-EMG included conduction studies of motor and sensory nerves, and needle EMG, which were performed by board-certified clinical neurophysiologists.

Motor nerves included^{22–24}: a) the ulnar nerves with recording from the abductor digiti minimi muscle and stimulation at wrist and above the elbow bilaterally; b) the peroneal nerves with recording from the extensor digitorum brevis muscle and stimulation on the dorsum of the foot and below the fibular head bilaterally, and c) the posterior tibial nerves with recording from the abductor hallucis muscle and stimulation at the medial malleolus and popliteal fossa bilaterally. Recorded parameters included the conduction velocity and distal latency, the amplitude of the CMAP and of the recurrent responses after supra-maximal intensity distal stimulation (F response to stimulation of the posterior tibial nerve and of the ulnar nerve).

Sensory nerves included: a) antidromic conduction studies of the ulnar nerves with stimulation at wrist level and recording of 5th finger bilaterally, and b) antidromic conduction study of the sural nerves with stimulation at the lower third of the leg and recording at the lateral malleolus bilaterally.

If a neuromuscular transmission defect was suspected, as in case of recent use of neuromuscular blocking agents, low frequency (3Hz) repetitive stimulation studies were performed with stimulation of the right ulnar nerve and recording from abductor digiti minimi and stimulation at wrist. In the case of decremental response on repetitive nerve stimulation, the patient was excluded from the study.

EMG was recorded using a coaxial needle electrode in proximal and distal muscles of upper (brachial biceps, abductor digiti minimi) and lower limbs (quadriceps femori, tibialis anterior). Abnormal spontaneous muscle activity in forms of fibrillation potentials and positive sharp waves was classified in 4 levels (0, 1+, 2+, 3+). Motor units were evaluated in terms of amplitude, duration and morphology and recruitment patterns in patients able to activate their muscles at their own volition^{25,26}.

Possible diagnoses based on complete NCS-EMG were: CIP, CIM, combined CIP and CIM, undetermined, or normal findings. The diagnostic criteria used conformed to accepted standards and have been described in detail elsewhere^{1,10,24}.

We did not evaluate the muscle strength clinically, hence the diagnoses were defined as *probable*¹. Probable CIP was established if NCS

showed a reduction in the amplitude of CMAP and SNAP below the normal value of the laboratory, with normal or mildly reduced nerve conduction velocity and normal neurotransmission¹.

Probable CIM was established in collaborative patients if the CMAP was abnormally reduced below the normal value of the laboratory, the SNAP was normal, and needle EMG demonstrated low-amplitude motor unit potentials with short duration, and early or normal full recruitment, with or without fibrillation potentials¹.

In non-collaborative patients, where the differential diagnosis between CIP and CIM could not be established using conventional NCS and EMG^{4,27}, centres were not required to use specialised neurophysiological techniques such as direct muscle stimulation, and abnormal findings were classified as undetermined.

Criteria to define true positive and true negative cases

Cases were considered as true negative if both ENG-EMG and PENT assessments were normal. Cases were considered as true positives if the PENT test was abnormal and ENG-EMG showed symmetric abnormal findings, independently from the specific diagnosis at NCS-EMG (CIP, CIM, or combined CIP and CIM). Patients with an abnormal finding at PENT assessment and normal findings or non-symmetrical neuropathy at ENG-EMG (*i.e.* mononeuropathy or multineuropathy) were considered as false positives.

Data quality control

All data were centrally reviewed by four of the research team (NL, BG, GN, GB), and diagnoses were evaluated for consistency with predefined electrophysiological diagnostic criteria of CIP and CIM. In the case of discordant results, the centres were contacted and diagnoses were discussed with local personnel until a consensus was reached. If needed, supplemental electrophysiological material was requested from the participating centre and analysed.

Data presentation, sample size calculation and statistical analysis

The study results are reported according to the Standards for Reporting of Diagnostic Accuracy (STARD)¹⁷.

We estimated a prevalence of CIP or CIM of 0.3, a test sensitivity of 90%, and test specificity of 65% based on the results of the CRIMYNE study¹⁰. We set a clinically acceptable precision at 10% for estimates of both sensitivity (true positive rate: 85% to 95%) and specificity (true negative rate: 60%–70%), and calculated that 125 patients would be needed to achieve such a precision²⁸.

We described continuous variables as means and standard deviations (SD) or medians and interquartile range (IQR), and categorical variables as counts and percentage.

The 95% confidence intervals (95% CI) for sensitivity and specificity were calculated according to the binomial distribution.

Results

During the study period, 342 patients were evaluated and 124 (36.3%) were enrolled (Figure 2).

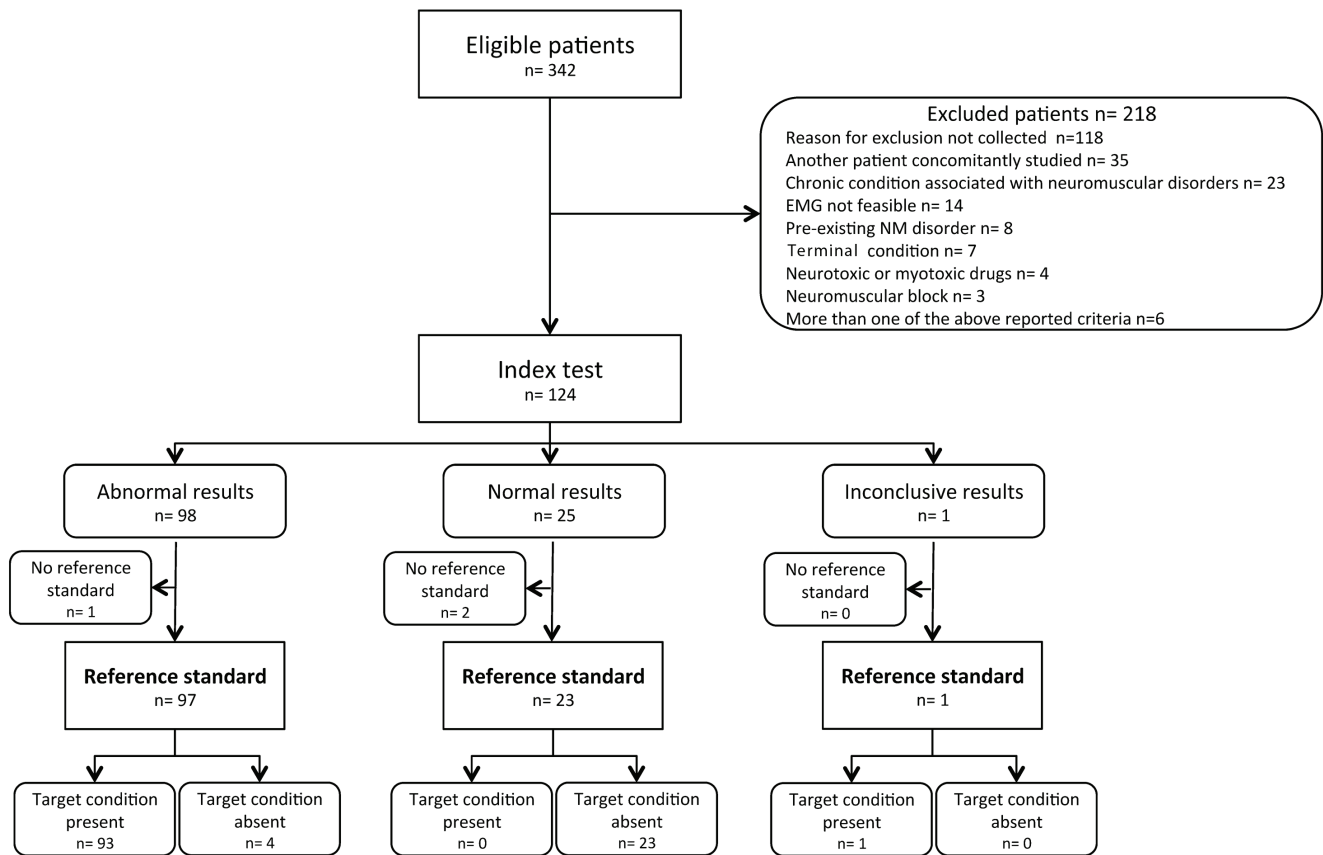


Figure 2. Standards for Reporting of Diagnostic Accuracy (STARD) flowchart.

Discordant results after central revision were documented in five cases. Two cases, classified by the local clinical neurophysiologist as normal despite minimally reduced ulnar CMAP amplitudes, were confirmed as normal at central revision after upgrading the outdated limits of normality used centrally. One case classified locally as abnormal because of minimally reduced proximal peroneal CMAP amplitude (recorded above the fibular head) and normal distal peroneal CMAP (below the fibular head) was classified as normal after central revision, according to the study protocol. One case initially misclassified as having normal PENT because of erroneous transcription of the data was reclassified to abnormal PENT after re-examination of the original electrophysiological data. One case was eventually classified as showing inconclusive results. This patient had normal findings at PENT and abnormal findings at complete NCS-EMG performed 24 hours later. Because this was a protocol violation and CMAP reduction may develop rapidly, within 24 hours of normal findings¹⁰, we excluded the patient from the analysis.

Of the 124 patients enrolled, 121 (98%) were investigated with both the index test (PENT) and the reference standard (complete NCS-EMG) with no protocol violation (Figure 2). The general characteristics of the study population are presented in Table 1. Acute neurologic patients were the main group of patients, with head trauma (35 patients), spontaneous intracranial haemorrhage (25) and aneurysmal subarachnoid haemorrhage (21) being the most

frequent causes of admission. Patients had a severe clinical condition, with high prevalence of sepsis, single organ failure (25%) or MOF (62%), and prolonged duration of mechanical ventilation and ICU stay, particularly in patients with abnormal NCS-EMG. Hospital mortality was higher in patients with abnormal NCS-EMG results than in patients with a normal NCS-EMG (Table 1).

Of 23 patients with normal NCS-EMG, all also had normal findings with PENT with no false negative results (Figure 2). Of 97 patients with abnormal ENG-EMG, four had peroneal nerve mononeuropathy at complete NCS-EMG and abnormal findings at PENT, and were classified as false positives. The sensitivity of the PENT was 100% (95% CI 96.1-100.0) and the specificity 85.2% (95% CI 66.3-95.8). Sensitivity was comparable to that found in the CRIMYNE study (100%). Specificity was higher in this study compared to the CRIMYNE study, but the difference was not statistically significant (CRIMYNE: 67%, CRIMYNE-2: 85%, $p=0.08$).

The electrophysiological diagnosis in the 93 patients with abnormal findings at complete NCS-EMG was CIP in 35 patients (37.6%), combined CIP and CIM in 16 (17.2%) patients and undetermined in 42 (45.2%) patients.

Electrophysiological investigations were performed on median ICU day 9 (IQR 5-16). The median time needed to perform PENT and the complete NCS-EMG was 10 minutes (IQR 8.0-10.5) and 50

Table 1. Demographic characteristics, clinical severity and outcome of the study population (121 patients). GCS: Glasgow Coma Scale; SAPS: Simplified Acute Physiology Score. NCS: nerve conduction study-electromyography.

Sex	Male	71 (58.7)
Number (percentage)	Female	50 (41.3)
Age (years)		51.3 (13.1)
Mean (SD)		
Surgical status	Nonsurgical	59 (48.8)
Number (percentage)	Emergency surgery	54 (44.6)
	Neurosurgery	38 (70.4)
	Elective surgery	8 (6.6)
Trauma		37 (30.6)
Number (percentage)		
Reason for admission	Monitoring	14 (11.6)
Number (percentage)	Intensive treatment	107 (88.4)
Organ failures at ICU admission*	Respiratory failure	106 (87.6)
Number (percentage)	Neurological failure	62 (51.2)
	Cardiovascular failure	23 (19.0)
	Renal failure	11 (9.1)
	Hepatic failure	2 (1.7)
Cause of ICU admission	Neurological	106 (87.6)
Number (percentage)	Non neurological	15 (12.4)
GCS (first 24 hours)		7 (5–10)
Median (IQR)		
SAPS II		40.0 (14.0)
Mean (SD)		
Infections at ICU admission	None	94 (77.7)
Number (percentage)	Present	27 (22.3)
Maximum severity of infection at ICU admission	Sepsis	14 (11.6)
Number (percentage)	Severe sepsis	6 (5.0)
	Septic shock	7 (5.8)
Infections during the ICU stay	None	50 (41.3)
Number (percentage)	Present	71 (58.7)
Maximum severity of infection during ICU stay	Sepsis	30 (24.8)
Number (percentage)	Severe sepsis	37 (30.6)
	Septic shock	18 (14.9)
ICU procedures*	Mechanical ventilation	115 (95.0)
	Vasoactive drugs	78 (64.5)
	Tracheostomy	72 (59.5)
	Enteral nutrition	106 (87.6)
	Parenteral nutrition	47 (38.8)
ICU stay (days)	All patients	19 (13–33)
Median (IQR)	Patients with abnormal NCS	23 (16–39)
	Patients with normal NCS	13 (10–19)
Hospital stay (days)	All patients	32 (21–43)
Median (IQR)	Patients with abnormal NCS	33 (24–46)
	Patients with normal NCS	22 (15–30)
Hospital mortality	All patients	22 (18.2)
Number (percentage)	Patients with abnormal NCS	20 (21.3)
	Patients with normal NCS	2 (7.4)

* Percentages may sum to more than 100% because patients may be classified in more than one category.

minutes (40–60). In 85 cases (70.2%), the peroneal nerve examined first was abnormal, thus eliminating the need for contralateral testing.

Data set for the CRIMYNE-2 study on the validation of peroneal nerve test to diagnose polyneuropathy and myopathy in 121 patients

1 Data File

<http://dx.doi.org/10.6084/m9.figshare.1021506>

Discussion

In this multicentre diagnostic accuracy study, we found that the PENT had 100% sensitivity and high specificity in diagnosing CIP or CIM, confirming the preliminary results of the previous CRIMYNE study¹⁰. The time needed to complete the test was 10 minutes, which was considerably shorter than the time needed to complete NCS-EMG (50 minutes).

Conventional NCS and EMG have never gained popularity in the ICU because they are time-consuming, not readily available, expensive, and technically challenging as they require specialised personnel. Therefore, our results may be important in promoting a wider use of electrophysiological investigations in the ICU. As a validated, high-sensitivity, minimally invasive, non-volitional and quick diagnostic test, PENT can accurately exclude CIP or CIM if the result is normal, and can be proposed for the assessment and monitoring of the neuromuscular function in the early stages of critical illnesses.

Abnormal PENT cannot discriminate between CIP, CIM or combined CIP and CIM; in fact, in our study, diagnosis was undetermined in almost half of patients. Because precise definition of pathology can be relevant for predicting the recovery of muscle strength^{13,14}, PENT can be used as a screening tool to select patients deserving further investigations. Moreover, “false positive patients” are those with peroneal nerve mononeuropathy who are worthy of medical attention. Involvement of the peroneal nerve is invariably detected in patients with CIP or CIM, possibly because it is the longest nerve of the body and, hence, it is mostly vulnerable to the energy deficit caused by tissue ischemia or dysoxia^{7,10}. In fact, the biosynthesis takes place in the neuronal cell body and then the structural components are moved into the axons and transported to their final destination to generate the action potential and to maintain axonal integrity, a process that requires considerable amount of energy^{7,10}. This might explain the reason why reduced peroneal nerve CMAP is highly sensitive compared to other tests. Pragmatically, measurements of peroneal CMAP could be implemented to diagnose all patients with ICU-acquired neuromuscular disorders, either CIP or CIM, while other tests, such as measurement of dmCMAP, could be used to differentiate CIM from CIP²⁹. Recent studies suggest that the *duration* of the CMAP can be prolonged in patients with CIM³⁰.

Five single-centre studies have used simplified electrophysiological tests of neuromuscular function in the ICU^{10,11,31–33}. In two randomized controlled trials on intensive insulin treatment^{31,32}, the

diagnosis of CIP was suggested by the presence of abundant spontaneous activity in the form of positive sharp waves and fibrillation potentials on EMG³⁴. No reference diagnostic standard was used, thus the sensitivity and specificity of the test are unknown. In the CRIMYNE study¹⁰, we used the same index test and reference diagnostic standard of the CRIMYNE-2 study, but comparison was unblinded and was limited to patients with abnormal findings at the index test, which may have inflated the test sensitivity. In a prospective observational study in surgical ICU patients¹¹, the sensitivity and specificity of dmCMAP in predicting the development of ICU-acquired weakness were 83.3% and 88.8%, respectively. In a more recent study³³, sensitivity and specificity of combined peroneal nerve CMAP and sural nerve SNAP evaluations were 100% and 81%, respectively. However, in both studies all electrophysiological measurements were performed by the same investigators, and no blind assessment of the reference diagnostic test was implemented³⁵.

Among non-volitional non-electrophysiological tests, ultrasound-guided assessment of muscle mass can reliably detect early muscle changes. In a recent prospective cohort study in 63 critically ill patients who were developing acute muscle wasting, the rectus femoris cross-sectional area decreased significantly from days 1 to 7 by 12.5%³⁶. Simultaneous measurement of muscle strength and muscle mass has been suggested as a critical step in all future studies investigating ICU-acquired weakness³⁷. However, assessing muscle strength may be difficult in the early stage of acute disease, and the use of PENT could be of value in assessing the generation of the action potential, which is an essential pre-requisite for muscle contraction.

The prevalence of electrophysiological abnormalities was 76%, which is higher than reported in a systematic review [46% (95% C.I. 43–49%)]²⁰. We enrolled patients with high incidence of sepsis and MOF, and prolonged mechanical ventilation⁵. It is therefore not surprising that this patient group also had a high incidence of ICU-acquired neuromuscular disorders that are currently viewed not as isolated events, but rather as an integral part of the process leading to MOF¹. In two recent studies, severe muscle weakness was documented in 74% of patients³⁸ and electrophysiological abnormalities in 87%¹¹. In an unselected population of critically ill children, the occurrence of generalised muscle weakness was substantially lower (1.7%)³⁹, reflecting the need for future studies to include much larger samples of unselected ICU patients to evaluate the true incidence of ICU-acquired neuromuscular disorders.

Several limitations of the current study are worth discussing. First, we did not test muscle strength clinically, and therefore, we could not evaluate the proportion of patients with pure electrophysiological alterations that developed definite CIP or CIM. Current recommendations suggest that patients with a MRC sum-score of less than 48 or reduced handgrip dynamometry should undergo physical rehabilitation without any further testing^{1,40}. NCS and EMG testing should be reserved for those patients not improving despite receiving such treatment. MRC and dynamometry can be easily implemented in the ICU, and inter-observer reliability is good. However, volitional tests require the patient’s collaboration, hence an inability to perform the test or the recording of low values may occur as

a result of coma, delirium, sedation, injury, or simply poor patient motivation or attention. Recent studies suggest that manual muscle testing can be insufficient for the early detection of ICU-acquired neuromuscular disorders in most patients⁴¹. In fact, ascertainment of ICU-acquired weakness at ICU day 7 post-awakening, as originally defined², can be of limited value because many patients have been already discharged from the ICU at that time, reflecting the change in clinical ICU practice towards earlier discharge³⁸. Moreover, inter-observer agreement on MRC sum-score assessment is only moderate in patients with MRC scores that are lower than 48, probably because the ability to perform the volitional MRC sum-score among the most severe patients is variable^{38,42}. PENT is not dependent upon patients' collaboration and could be performed at an early stage to detect initial functional derangement and to use the results to start investigational treatments with the aim of interrupting pathological mechanisms at their onset⁴³. Several studies have demonstrated that electrophysiological alterations are followed by muscle weakness, but they included a small number of selected ICU patients⁷⁻¹¹. PENT is a quick test and could be used in large ICU populations.

Second, the large majority of patients were critically ill neurologic patients, which may limit the generalisability of the results to other ICU populations. However, development of CIP and CIM is independent from the cause of ICU admission, and it rather depends on MOF, which is also a common complication in acute neurologic patients⁴⁴, as it is confirmed in this study.

Lastly, we excluded patients with diabetes, who may represent up to 16% percent of patients admitted to the ICU⁴⁵. Peripheral neuropathy is a common complication in diabetic patients⁴⁶. However, generalised symmetric polyneuropathy typically involves sensory nerves with mild reduction in distal sensory response amplitudes (e.g., those of the sural nerves)⁴⁷. In contrast, motor response amplitudes, as those tested with peroneal nerve evaluation, are generally preserved and decrease only in more advanced disease.

Conclusions

To the authors' knowledge, this is the first time that a simplified electrophysiological test to assess the peripheral nerve and muscle function has been evaluated in an ICU population using a rigorous methodology based on independent and blinded comparison with a reference standard.

Measurement of CMAP of the peroneal nerve showed 100% sensitivity and high specificity in diagnosing probable CIP or CIM, and did not require patients' collaboration. Potential useful applications of the test can be at the early ICU stage, when volitional tests can be rarely performed. At a later stage, before discharge from ICU or acute-care hospital, a normal test excludes CIP or CIM and the need for further electrophysiological investigations. If patients present abnormal values, they might have CIP, CIM or focal peripheral nerve complications such as peroneal entrapment neuropathy that warrant neurological consultation.

The application of this test to wider populations of ICU patients might allow a more precise estimation of the true incidence of ICU-acquired neuromuscular disorders. With adequately powered

observational cohort studies, future studies might be able to evaluate the relationship between electrophysiologically-proven CIP or CIM and reduced muscle strength and mass in the ICU^{36,37}, as well the relationship between these acute changes and persistent muscle weakness or persistent physical dysfunction at long-term follow-up⁴².

Data availability

figshare: Data set for the CRIMYNE-2 study on the validation of peroneal nerve test to diagnose polyneuropathy and myopathy in 121 patients, doi: <http://dx.doi.org/10.6084/m9.figshare.1021506>⁴⁸

Consent

Detailed written information was provided to the patients and family members about the study protocol, the scope of research, and the safety of electrophysiological investigations. Written informed consent was obtained from the patient where appropriate. In case of altered consciousness, the Ethics Committees waived the requirement for consent, as in Italy relatives are not regarded as legal representatives of the patient in the absence of a formal designation²¹. Written informed consent was requested from all surviving patients as soon as they regained their mental competency.

Author contributions

All authors made a substantial contribution to the study design and methods.

Nicola Latronico conceived the idea of the study. Nicola Latronico, Guido Bertolini, Bruno Guarneri and Aldo Amantini designed the protocol.

Guido Bertolini and Giovanni Nattino performed the statistical analyses.

Guido Bertolini and Giovanni Nattino were responsible for database handling and data quality control.

Bruno Guarneri, Nicola Latronico, Guido Bertolini and Giovanni Nattino were responsible for the central revision of electrophysiological diagnoses.

Nicola Latronico and Nazzareno Fagoni were responsible for the clinical investigations of the study.

Nicola Latronico drafted the manuscript and all authors critically revised it for important intellectual content. All authors read and approved the final manuscript.

GiViTI group was responsible for collecting data.

The full list of collaborators (GiViTI group) is as follows:

Steering committee: Luisa Antonini, MD (University of Brescia, Italy); Matthias Eikermann, MD (Harvard University, Boston, USA); Tarek Sharshar, MD, PhD (University of Versailles, France) and Robert Stevens, MD, PhD (John Hopkins University Schools of Medicine, Baltimore, USA).

GiViTI study investigators: Bruno Guarneri, MD, Lucia Salvatoni, technician, Nazzareno Fagoni, MD, Simone Piva, MD, Frank Rasulo, MD and Nicola Latronico, MD (University of Brescia at Spedali

Civili, Brescia, Italy); Maurizio Osio, MD, Anna Mangiatordi, technician and Beatrice Borghi, MD (Ospedale Sacco, Milano, Italy); Enrico Bosco, MD, Fabrizio Baldanzi, technician, and Ennio Nascimben, MD (Ospedale Regionale S. Maria dei Battuti Ca' Foncello, Treviso, Italy); Camillo Foresti, MD, Paolo Conte, technician, and Federica Rottoli, MD (Ospedale Papa Giovanni XXIII, Bergamo, Italy); Luisa Motti, MD, Claudio Basile, technician, and Valter Bottari, MD (Ospedale S. Maria Nuova, Reggio Emilia, Italy); Aldo Amantini, MD, Cesarina Cossu, technician, and Manuela Bonizzoli, MD (Ospedale Careggi, Firenze, Italy); Giovanna Squintani, MD, Silvia Romito, MD, and Francesca Casagrande, MD (Ospedale Maggiore Borgo Trento, Verona, Italy); Marcello Romano, MD, Simone

Caruso, technician, Baldassare Renda, MD (Ospedale Villa Sofia-CTO, Palermo, Italy); Ennio Iezzi, MD, Luigi Chiacchiarri, technician, and Valeria Marinò, MD (Istituto Neurologico Mediterraneo IRCCS Neuromed, Pozzilli, Italy).

Competing interests

No competing interests were disclosed.

Grant information

The study was funded with internal funds of the University of Brescia, Italy and the IRCCS-Istituto di Ricerche Farmacologiche Mario Negri, Italy.

The funders had no role in study design, data collection and analysis, decision to publish, or preparation of the manuscript.

References

- Latronico N, Bolton CF: **Critical illness polyneuropathy and myopathy: a major cause of muscle weakness and paralysis.** *Lancet Neurol.* 2011; **10**(10): 931–41. [PubMed Abstract](#) | [Publisher Full Text](#)
- De Jonghe B, Sharshar T, Lefaucheur JP, et al.: **Paresis acquired in the intensive care unit: a prospective multicenter study.** *JAMA.* 2002; **288**(22): 2859–67. [PubMed Abstract](#) | [Publisher Full Text](#)
- Ali NA, O'Brien JM Jr, Hoffmann SP, et al.: **Acquired weakness, handgrip strength, and mortality in critically ill patients.** *Am J Respir Crit Care Med.* 2008; **178**(3): 261–8. [PubMed Abstract](#) | [Publisher Full Text](#)
- Latronico N, Shehu I, Guarneri B: **Use of electrophysiologic testing.** *Crit Care Med.* 2009; **37**(10 Suppl): S316–20. [PubMed Abstract](#) | [Publisher Full Text](#)
- Latronico N, Filosto M, Fagoni N, et al.: **Small nerve fiber pathology in critical illness.** *PLoS One.* 2013; **8**(9): e75696. [PubMed Abstract](#) | [Publisher Full Text](#) | [Free Full Text](#)
- Bolton CF: **Neuromuscular manifestations of critical illness.** *Muscle Nerve.* 2005; **32**(2): 140–63. [PubMed Abstract](#) | [Publisher Full Text](#)
- Latronico N, Fenzi F, Recupero D, et al.: **Critical illness myopathy and neuropathy.** *Lancet.* 1996; **347**(9015): 1579–82. [PubMed Abstract](#) | [Publisher Full Text](#)
- Leijten FS, Harinck-de Weerd JE, et al.: **The role of polyneuropathy in motor convalescence after prolonged mechanical ventilation.** *JAMA.* 1995; **274**(15): 1221–5. [PubMed Abstract](#) | [Publisher Full Text](#)
- Khan J, Harrison TB, Rich MM, et al.: **Early development of critical illness myopathy and neuropathy in patients with severe sepsis.** *Neurology.* 2006; **67**(8): 1421–5. [PubMed Abstract](#) | [Publisher Full Text](#)
- Latronico N, Bertolini G, Guarneri B, et al.: **Simplified electrophysiological evaluation of peripheral nerves in critically ill patients: the Italian multi-centre CRIMYNE study.** *Crit Care.* 2007; **11**(1): R11. [PubMed Abstract](#) | [Publisher Full Text](#) | [Free Full Text](#)
- Weber-Carstens S, Koch S, Spuler S, et al.: **Nonexcitable muscle membrane predicts intensive care unit-acquired paresis in mechanically ventilated, sedated patients.** *Crit Care Med.* 2009; **37**(9): 2632–7. [PubMed Abstract](#) | [Publisher Full Text](#)
- Tennila A, Salmi T, Pettila V, et al.: **Early signs of critical illness polyneuropathy in ICU patients with systemic inflammatory response syndrome or sepsis.** *Intensive Care Med.* 2000; **26**(9): 1360–3. [PubMed Abstract](#) | [Publisher Full Text](#)
- Koch S, Spuler S, Deja M, et al.: **Critical illness myopathy is frequent: accompanying neuropathy protracts ICU discharge.** *J Neurol Neurosurg Psychiatry.* 2011; **82**(3): 287–93. [PubMed Abstract](#) | [Publisher Full Text](#)
- Guarneri B, Bertolini G, Latronico N: **Long-term outcome in patients with critical illness myopathy or neuropathy: the Italian multicentre CRIMYNE study.** *J Neurol Neurosurg Psychiatry.* 2008; **79**(7): 838–41. [PubMed Abstract](#) | [Publisher Full Text](#)
- Koch S, Wollersheim T, Bierbrauer J, et al.: **Long term Recovery in Critical Illness Myopathy is complete, contrary to Polyneuropathy.** *Muscle Nerve.* 2014. [PubMed Abstract](#) | [Publisher Full Text](#)
- Bossuyt PM, Reitsma JB, Bruns DE, et al.: **The STARD statement for reporting studies of diagnostic accuracy: explanation and elaboration.** *Ann Intern Med.* 2003; **138**(1): W1–12. [PubMed Abstract](#) | [Publisher Full Text](#)
- Bossuyt PM, Reitsma JB, Bruns DE, et al.: **Towards complete and accurate reporting of studies of diagnostic accuracy: the STARD initiative.** *BMJ.* 2003; **326**(7379): 41–4. [PubMed Abstract](#) | [Publisher Full Text](#) | [Free Full Text](#)
- Holloway RG: **Improving the flow of diagnostic information.** The importance of STARD for authors and readers. *Neurology.* 2003; **61**: 600–1. [Publisher Full Text](#)
- Rossi C, Nattino G, Facchinetti S, et al.: **Margherita-PROSAFE project. Promoting patient safety, research, and quality improvement in critical care medicine. Report 2012.** Bergamo, Italy: Sestante edizioni; 2013. [Reference Source](#)
- Stevens RD, Dowdy DW, Michaels RK, et al.: **Neuromuscular dysfunction acquired in critical illness: a systematic review.** *Intensive Care Med.* 2007; **33**(11): 1876–91. [PubMed Abstract](#) | [Publisher Full Text](#)
- Zamperetti N, Latronico N: **Clinical research in critically ill patients: the situation in Italy.** *Intensive Care Med.* 2008; **34**(7): 1330–2. [PubMed Abstract](#) | [Publisher Full Text](#)
- Bolton CF: **Electrophysiologic studies of critically ill patients.** *Muscle Nerve.* 1987; **10**(2): 129–35. [PubMed Abstract](#) | [Publisher Full Text](#)
- Bolton CF, Lavery DA, Brown JD, et al.: **Critically ill polyneuropathy: electrophysiological studies and differentiation from Guillain-Barre syndrome.** *J Neurol Neurosurg Psychiatry.* 1986; **49**(5): 563–73. [PubMed Abstract](#) | [Publisher Full Text](#) | [Free Full Text](#)
- Witt NJ, Zochodne DW, Bolton CF, et al.: **Peripheral nerve function in sepsis and multiple organ failure.** *Chest.* 1991; **99**(1): 176–84. [PubMed Abstract](#) | [Publisher Full Text](#)
- Daube JR: **AAEM minimonograph #11: Needle examination in clinical electromyography.** *Muscle Nerve.* 1991; **14**(8): 685–700. [PubMed Abstract](#) | [Publisher Full Text](#)
- Petajan JH: **AAEM minimonograph #3: motor unit recruitment.** *Muscle Nerve.* 1991; **14**(6): 489–502. [PubMed Abstract](#) | [Publisher Full Text](#)
- Latronico N, Peli E, Botteri M: **Critical illness myopathy and neuropathy.** *Curr Opin Crit Care.* 2005; **11**(2): 126–32. [PubMed Abstract](#)
- Buderer NM: **Statistical methodology: I. Incorporating the prevalence of disease into the sample size calculation for sensitivity and specificity.** *Acad Emerg Med.* 1996; **3**(9): 895–900. [PubMed Abstract](#) | [Publisher Full Text](#)
- Rich MM, Bird SJ, Raps EC, et al.: **Direct muscle stimulation in acute quadriplegic myopathy.** *Muscle Nerve.* 1997; **20**(6): 665–73. [PubMed Abstract](#)
- Goodman BP, Harper CM, Boon AJ: **Prolonged compound muscle action potential duration in critical illness myopathy.** *Muscle Nerve.* 2009; **40**(6): 1040–2. [PubMed Abstract](#) | [Publisher Full Text](#)
- van den Bergh G, Wouters P, Weekers F, et al.: **Intensive insulin therapy in the critically ill patients.** *N Engl J Med.* 2001; **345**(19): 1359–67. [PubMed Abstract](#) | [Publisher Full Text](#)

32. Van den Berghe G, Wilmer A, Hermans G, *et al.*: **Intensive insulin therapy in the medical ICU.** *N Engl J Med.* 2006; **354**(5): 449–61.
[PubMed Abstract](#) | [Publisher Full Text](#)
33. Moss M, Yang M, Macht M, *et al.*: **Screening for critical illness polyneuromyopathy with single nerve conduction studies.** *Intensive Care Med.* 2014; **40**(5): 683–90.
[PubMed Abstract](#) | [Publisher Full Text](#)
34. Van den Berghe G, Schoonheydt K, Becx P, *et al.*: **Insulin therapy protects the central and peripheral nervous system of intensive care patients.** *Neurology.* 2005; **64**(8): 1348–53.
[PubMed Abstract](#) | [Publisher Full Text](#)
35. Latronico N, Smith M: **Introducing simplified electrophysiological test of peripheral nerves and muscles in the ICU: choosing wisely.** *Intensive Care Med.* 2014; **40**(5): 746–8.
[PubMed Abstract](#) | [Publisher Full Text](#)
36. Puthuchery ZA, Rawal J, McPhail M, *et al.*: **Acute skeletal muscle wasting in critical illness.** *JAMA.* 2013; **310**(15): 1591–600.
[PubMed Abstract](#) | [Publisher Full Text](#)
37. Batt J, Dos Santos CC, Herridge MS: **Muscle injury during critical illness.** *JAMA.* 2013; **310**(15): 1569–70.
[PubMed Abstract](#) | [Publisher Full Text](#)
38. Connolly BA, Jones GD, Curtis AA, *et al.*: **Clinical predictive value of manual muscle strength testing during critical illness: an observational cohort study.** *Crit Care.* 2013; **17**(5): R229.
[PubMed Abstract](#) | [Publisher Full Text](#)
39. Banwell BL, Mildner RJ, Hassall AC, *et al.*: **Muscle weakness in critically ill children.** *Neurology.* 2003; **61**(12): 1779–82.
[PubMed Abstract](#) | [Publisher Full Text](#)
40. Stevens RD, Marshall SA, Comblath DR, *et al.*: **A framework for diagnosing and classifying intensive care unit-acquired weakness.** *Crit Care Med.* 2009; **37**(10 Suppl): S299–308.
[PubMed Abstract](#) | [Publisher Full Text](#)
41. Hough CL, Lieu BK, Caldwell ES: **Manual muscle strength testing of critically ill patients: feasibility and interobserver agreement.** *Crit Care.* 2011; **15**(1): R43.
[PubMed Abstract](#) | [Publisher Full Text](#) | [Free Full Text](#)
42. Eikermann M, Latronico N: **What is new in prevention of muscle weakness in critically ill patients?** *Intensive Care Med.* 2013; **39**(12): 2200–3.
[PubMed Abstract](#) | [Publisher Full Text](#)
43. Bolton CF: **Evidence of neuromuscular dysfunction in the early stages of the systemic inflammatory response syndrome.** *Intensive Care Med.* 2000; **26**(9): 1179–80.
[PubMed Abstract](#) | [Publisher Full Text](#)
44. Zygun DA, Kortbeek JB, Fick GH, *et al.*: **Non-neurologic organ dysfunction in severe traumatic brain injury.** *Crit Care Med.* 2005; **33**(3): 654–60.
[PubMed Abstract](#) | [Publisher Full Text](#)
45. Christiansen CF, Johansen MB, Christensen S, *et al.*: **Type 2 diabetes and 1-year mortality in intensive care unit patients.** *Eur J Clin Invest.* 2013; **43**(3): 238–47.
[PubMed Abstract](#) | [Publisher Full Text](#)
46. Vinik AI, Nevoret ML, Casellini C, *et al.*: **Diabetic neuropathy.** *Endocrinol Metab Clin North Am.* 2013; **42**(4): 747–87.
[PubMed Abstract](#) | [Publisher Full Text](#)
47. Perkins BA, Brill V: **Diabetic neuropathy: a review emphasizing diagnostic methods.** *Clin Neurophysiol.* 2003; **114**(7): 1167–75.
[PubMed Abstract](#) | [Publisher Full Text](#)
48. Latronico N, Nattino G, Guameri B, *et al.*: **Data set for the CRIMYNE-2 study on the validation of peroneal nerve test to diagnose polyneuropathy and myopathy in 121 patients.** *Figshare.* 2014.
[Data Source](#)

Open Peer Review

Current Referee Status:



Version 3

Referee Report 22 August 2014

doi:[10.5256/f1000research.5168.r5088](https://doi.org/10.5256/f1000research.5168.r5088)



Werner J. Z'Graggen

Department of Neurology, Inselspital, Bern University Hospital and University of Bern, Bern, Switzerland

The authors have addressed my queries.

I have read this submission. I believe that I have an appropriate level of expertise to confirm that it is of an acceptable scientific standard.

Competing Interests: No competing interests were disclosed.

Referee Report 23 July 2014

doi:[10.5256/f1000research.5168.r5560](https://doi.org/10.5256/f1000research.5168.r5560)



Alexander Semmler

Department of Neurology, University Hospital Zurich, Zurich, Switzerland

I have read this submission. I believe that I have an appropriate level of expertise to confirm that it is of an acceptable scientific standard.

Competing Interests: No competing interests were disclosed.

Version 2

Referee Report 23 June 2014

doi:[10.5256/f1000research.4851.r5212](https://doi.org/10.5256/f1000research.4851.r5212)



Alexander Semmler

Department of Neurology, University Hospital Zurich, Zurich, Switzerland

Title, abstract, study design, methods are adequate. Results are sound.

Minor comments:

1. The authors compared PENT with standard nerve conduction studies. The diagnostic criteria for CIM/CIP include clinical testing and muscle biopsy. Please discuss why you have not compared your method to the diagnostic standard.
2. The typical patient populations on ICUs are different from the population of the actual study. Patients are often old, and show a high prevalence of diabetes, alcohol abuse and other medical conditions that predispose to polyneuropathy. This may lead to a lot more false positives when only PENT is performed. Please discuss that.
3. Please speculate how PENT could influence the current standard medical practice.

I have read this submission. I believe that I have an appropriate level of expertise to confirm that it is of an acceptable scientific standard.

Competing Interests: No competing interests were disclosed.

Author Response (F1000Research Advisory Board Member) 21 Jul 2014

Nicola Latronico, University Department of Anesthesia and Critical Care Medicine, University of Brescia, Italy

1. *The authors compared PENT with standard nerve conduction studies. The diagnostic criteria for CIM/CIP include clinical testing and muscle biopsy. Please discuss why you have not compared your method to the diagnostic standard.*

The CRIMYNE-2 study was a validation study comparing electrophysiological tests, and hence we did not evaluate the muscle strength clinically nor muscle histology, as we declared in the Methods. Possible diagnoses with PENT were normal or abnormal condition with no inference to the differential diagnosis between CIP and CIM. Hence, PENT can only be used as a screening tool, and we further specified this aspect in the Abstract's conclusion as suggested by the other reviewer. As a high sensitivity test, PENT has a high negative predictive value and is particularly useful in excluding diseased patients if normal. If abnormal, further neurological, electrophysiological and biopsy investigations can be needed to exactly define the nature of the disease.

2. *The typical patient populations on ICUs are different from the population of the actual study. Patients are often old, and show a high prevalence of diabetes, alcohol abuse and other medical conditions that predispose to polyneuropathy. This may lead to a lot more false positives when only PENT is performed. Please discuss that.*

This is an important topic, and we thank to reviewer for giving us the possibility to further discuss it. As we mentioned in the Discussion, the diabetic neuropathy typically involves sensory nerves, motor nerves are involved only in the advanced stage of the disease. Thus, diabetic patients with abnormal PENT would deserve further evaluation. In patients with abnormal PENT, clinical history together with neurological and electrophysiological investigations and appropriate follow-up are essential to identify those patients in whom the CIP complicates a pre-existing diabetic neuropathy. It is worth noting that most of these

patients discharged from the ICU are currently left with undefined diagnosis.

3. *Please speculate how PENT could influence the current standard medical practice.*

As a quick, noninvasive and easily repeatable test, PENT can be used as a screening test in all ICU patients with severe critical illness, such as those with protracted ICU stay or mechanical ventilation, those with sepsis and multiple organ dysfunctions or those with clinically identifiable ICU-acquired weakness. This would be a major change in current practice, because, as mentioned above, many critically ill patients do not receive adequate evaluation of acute neuromuscular problems arising during the ICU possibly as a consequence of rapid turnover or other causes ¹. As a screening test, PENT may select patients with normal finding who do not require further investigations. Moreover, patients with ICU-acquired weakness have a better outcome if electrophysiology is normal ². Patients with abnormal PENT will not invariably have CIP or CIM. With further evaluation, they may eventually be diagnosed with peroneal nerve palsy or other peripheral nervous system diseases that merit medical attention. In prospect, electrophysiological alterations of peripheral nerves and muscles may help in instituting timely treatments since they may precede muscle weakness and functional impairment or their diagnosis can be established at an earlier stage ³. Patients in the ICU often are sedated or develop delirium and consciousness disturbance or have acute neurological illnesses precluding the use of clinical tests such as the Medical Research Council score or handgrip dynamometry early in the ICU.

References

1. Connolly BA, Jones GD, Curtis AA, Murphy PB, Douiri A, Hopkinson NS, Polkey MI, Moxham J, Hart N: Clinical predictive value of manual muscle strength testing during critical illness: an observational cohort study. *Crit Care*.2013; **17** (5): R229 [PubMed Abstract](#) | [Free Full Text](#) | [Publisher Full Text](#)
2. Moss M, Yang M, Macht M, Sottile P, Gray L, McNulty M, Quan D: Screening for critical illness polyneuromyopathy with single nerve conduction studies. *Intensive Care Med*.2014; **40** (5): 683-690 [PubMed Abstract](#) | [Publisher Full Text](#)
3. Latronico N, Shehu I, Guarneri B: Use of electrophysiologic testing. *Crit Care Med*.2009; **37** (10): S316-S320 [PubMed Abstract](#) | [Publisher Full Text](#)

Competing Interests: No competing interests were disclosed.

Referee Report 19 June 2014

doi:10.5256/f1000research.4851.r5182



Werner J. Z'Graggen

Department of Neurology, Inselspital, Bern University Hospital and University of Bern, Bern, Switzerland

Latronico and colleagues report the findings of the CRIMYNE-2 study. The preceding CRIMYNE study showed that a simplified electrophysiological investigation (limited to a peroneal nerve conduction study (PENT)) has a sensitivity of 100% and specificity of 67% for the detection of a critical illness polyneuropathy (CIP) and/or critical illness myopathy (CIM) compared to a state of the art

electrophysiological investigation. The CRIMYNE-2 study aimed to validate these findings, since the preceding study had some important methodological limitations, which was probably one of the reasons why this simplified approach was not widely accepted by clinicians and researchers. To my opinion, the CRIMYNE-2 study is well designed and achieves its aim. The study was carefully done and confirmed for PENT a sensitivity of 100% and a specificity of 85%. There were no false negative results. The authors conclude that PENT can be used as a screening tool for CIP and CIM and that PENT might be more reliable than other screening methods currently performed, since no patient collaboration is needed.

There are some study limitations that should be discussed by the authors in the paragraph about limitations (to some extent the authors mention them in other parts of the manuscript). Based on the current diagnostic criteria for CIM, state of the art electrophysiological investigations allow only the diagnosis of probable CIM, definite diagnosis needs additionally the presence of weakness and histological changes. For CIP, definite diagnosis requires in addition clinical weakness. CRIMYNE-2 did not compare PENT with the criteria for definite CIP/CIM, which could have caused an additional study bias. Furthermore, the authors propose to use PENT for screening without additional repetitive stimulation (which they used in the study). This could lead to an increase of false positive results. Also this aspect should be discussed.

The results of CRIMYNE-2 demonstrate that PENT can be used as a screening tool for CIP/M. PENT cannot be used to discriminate between CIP and CIM or concomitant CIP and CIM. The authors should therefore state in their conclusion in the abstract, that PENT can be used as screening test.

I have read this submission. I believe that I have an appropriate level of expertise to confirm that it is of an acceptable scientific standard.

Competing Interests: No competing interests were disclosed.

Author Response (F1000Research Advisory Board Member) 21 Jul 2014

Nicola Latronico, University Department of Anesthesia and Critical Care Medicine, University of Brescia, Italy

We thank the reviewer for his thoughtful comments. As mentioned in our reply to Dr. Semmler, PENT was conceived as a screening tool, and diagnoses were categorized as normal or abnormal condition with no inference to the differential diagnosis between CIP and CIM. We modified the conclusions in the Abstract to clarify even further this concept, as required by the reviewer.

Competing Interests: No competing interests were disclosed.