

ORIGINAL ARTICLE

Overexpression of BLM promotes DNA damage and increased sensitivity to platinum salts in triple-negative breast and serous ovarian cancers

N. J. Birkbak^{1,2†}, Y. Li^{2†}, S. Pathania^{2†}, A. Greene-Colozzi², M. Dreze², C. Bowman-Colin², Z. Sztupinszki¹, M. Krzystanek¹, M. Diossy¹, N. Tung³, P. D. Ryan⁴, J. E. Garber², D. P. Silver^{2,3}, J. D. Iglehart^{2,5}, Z. C. Wang^{2,5}, D. Szuts⁶, Z. Szallasi^{1,7*‡} & A. L. Richardson^{2,5*‡}

¹Department of Bio and Health Informatics, Technical University of Denmark, Lyngby, Denmark; ²Dana-Farber Cancer Institute, Harvard Medical School, Boston; ³Beth Israel Deaconess Medical Center, Harvard Medical School, Boston; ⁴Texas Oncology, The Woodlands; ⁵Brigham and Women's Hospital, Harvard Medical School, Boston, USA; ⁶Institute of Enzymology, Research Center for Natural Sciences, Hungarian Academy of Sciences, Budapest, Hungary; ⁷Computational Health Informatics Program (CHIP) Boston Children's Hospital Harvard Medical School, Boston, USA

*Correspondence to: Prof. Zoltan Szallasi, Computational Health Informatics Program (CHIP) Boston Children's Hospital, Harvard Medical School, 300 Longwood Ave., Boston, MA 02215, USA. Tel: +1-617-355-2179; E-mail: Zoltan.szallasi@childrens.harvard.edu

Dr Andrea L. Richardson, Department of Pathology, Johns Hopkins Medicine, Sibley Memorial Hospital, 5255 Loughboro Rd. NW, Washington, DC 20016, USA. Tel: +1-202-660-6309; E-mail: aricha58@jhmi.edu

†These primary authors contributed equally to this work.

‡These senior authors contributed equally to this work.

Background: Platinum-based therapy is an effective treatment for a subset of triple-negative breast cancer and ovarian cancer patients. In order to increase response rate and decrease unnecessary use, robust biomarkers that predict response to therapy are needed.

Patients and methods: We performed an integrated genomic approach combining differential analysis of gene expression and DNA copy number in sensitive compared with resistant triple-negative breast cancers in two independent neoadjuvant cisplatin-treated cohorts. Functional relevance of significant hits was investigated *in vitro* by overexpression, knockdown and targeted inhibitor treatment.

Results: We identified two genes, the Bloom helicase (*BLM*) and Fanconi anemia complementation group I (*FANCI*), that have both increased DNA copy number and gene expression in the platinum-sensitive cases. Increased level of expression of these two genes was also associated with platinum but not with taxane response in ovarian cancer. As a functional validation, we found that overexpression of BLM promotes DNA damage and induces sensitivity to cisplatin but has no effect on paclitaxel sensitivity.

Conclusions: A biomarker based on the expression levels of the *BLM* and *FANCI* genes is a potential predictor of platinum sensitivity in triple-negative breast cancer and ovarian cancer.

Key words: platinum-based chemotherapy, gene expression-based predictor of treatment sensitivity, triple-negative breast cancer, ovarian cancer

Introduction

BRCA1 plays an important role in response to replication stress and repair of stalled or collapsed replication forks, and complete absence of functional BRCA1 leads to defective error-free

homologous recombination-type double strand break repair. BRCA1^{−/−} tumors are particularly sensitive to platinum-containing chemotherapy and inhibitors of Poly [ADP-ribose] polymerase 1 (PARP1), whereas BRCA wild-type cancers showed

a more limited response to these agents [1]. Platinum salts generate both interstrand and intrastrand cross-links that slow or stall replication forks [2]. Stalled replication forks may collapse into double-strand breaks (DSBs) and/or become sites for translational synthesis-induced mutagenesis, potentially causing genome instability.

Platinum-sensitive triple-negative breast cancers (TNBC) and serous ovarian cancers carry extensive genomic rearrangements and allelic imbalance suggesting these cancers may share similar defects in DNA repair acquired through alternative mechanisms than through BRCA1 loss [3]. The overall level of such genomic aberrations can be characterized and quantified by a recently developed clinical measure, the 'HRD score' [3–5]. These results suggest that platinum sensitivity may be related to a functional defect that occurs when BRCA1 levels are insufficient and a biomarker indicative of such defects may be predictive of sensitivity to DNA cross-linkers such as platinum agents.

To explore and define specific molecular alterations that might be associated with cisplatin sensitivity, we combined differential analysis of gene expression and DNA copy number in cisplatin sensitive compared with cisplatin-resistant TNBC.

Materials and methods

Breast cancer cohorts

This study is based on previously published clinical and molecular data from two cisplatin-treated triple-negative breast cancer trials, cisplatin 1 and cisplatin 2 [3, 6]. SNP data are available from the National Center for Biotechnology Information Gene Expression Omnibus (GEO) at GSE28330, and RNA expression data for cisplatin 1 are available GEO at GSE18864.

Data acquisition and data generation

Gene expression data based on the Affymetrix HGU133plus2 platform were generated from a subset of the cisplatin 2 cohort from which sufficient material was available as described previously [6] with the exception that the samples were not subjected to double amplification. Data available from GEO at GSE103668. Gene expression data from the ovarian cancer trial OV-01 [7] based on the Affymetrix HGU133A platform were acquired from GEO at GSE15622.

Cell lines

Breast cancer cell lines MDA-MB-231, MDA-MB-436, MDA-MB-453, HCC38, HCC1143, HCC1937 and BT549 were cultured *in vitro* and subjected to DNA damage. Transfections of siRNA and plasmid DNA were performed using Lipofectamine RNAiMAX or Lipofectamine 2000 (Life Technologies), respectively.

For full experimental details, see [supplementary Methods](#), available at [Annals of Oncology](#) online.

Results

Identification of genes associated with cisplatin response

We performed a leave-one-out (LOO) differential gene expression analysis in two independent cisplatin-treated TNBC cohorts separately to identify genes significantly associated with response.

Permutation testing identified 12 genes where expression was significantly associated with platinum response in both cisplatin TNBC cohorts ([supplementary Table S1](#) and Figure S1, available at [Annals of Oncology](#) online, Figure 1A). A similar LOO analysis of the DNA copy numbers were performed. This identified 234 genes associated with cisplatin response in both cisplatin TNBC cohorts ([supplementary Table S2](#) and Figure S1B, available at [Annals of Oncology](#) online, Figure 1B). Only two genes were identified in both analyses for association with platinum sensitivity, the Bloom helicase (*BLM*) and the Fanconi anemia complementation group I (*FANCI*) genes, both located at chromosome 15q26. The copy number of both genes was significantly higher in the cisplatin-sensitive tumors in both TNBC cohorts (*BLM*: cisplatin-1, $P=0.003$, cisplatin-2, $P=0.008$, *FANCI*: cisplatin-1, $P=0.003$, cisplatin-2, $P=0.003$, [supplementary Figure S1C](#), available at [Annals of Oncology](#) online). Both *BLM* and *FANCI* showed DNA copy number gain in 33% of sensitive versus 0% of resistant tumors in cisplatin-1, and gain in 44% of sensitive versus 12% of resistant tumors in cisplatin-2. Similarly, in both cohorts cisplatin-sensitive tumors had significantly higher *BLM* and *FANCI* mRNA expression (*BLM*: cisplatin-1, $P=0.0028$; cisplatin-2, $P=0.0075$; Figure 1C and D, *FANCI*: cisplatin-1, $P=0.0036$; cisplatin-2, $P=0.0125$; Figure 1E and F).

As validation, gene expression levels of *BLM* and *FANCI* as measured by Affymetrix U133 microarray were significantly correlated with results obtained by qRT-PCR for the same samples (*BLM*, $r=0.87$; *FANCI*, $r=0.76$; [supplementary Figure S1D](#) and E, available at [Annals of Oncology](#) online). Western blot analysis in protein extracts from a series of tumor samples ([supplementary Figure S1H](#), available at [Annals of Oncology](#) online) with matched array-based mRNA measurements showed good correlation between mRNA and protein levels for *BLM* (Spearman $r=0.68$, $P=0.0023$; [supplementary Figure S1F](#), available at [Annals of Oncology](#) online), but not for *FANCI* (Spearman $r=-0.01$, $P=0.97$, [supplementary Figure S1G](#), available at [Annals of Oncology](#) online).

We found the expression level of *BRCA1* transcript as measured by qRT-PCR significantly associated with cisplatin resistance [3, 6]. When we tested association of the ratio of average of *BLM* and *FANCI* levels divided by *BRCA1* levels from microarray expression versus cisplatin response, the ratio was significantly higher in the cisplatin-sensitive tumors in both cohorts (cisplatin-1, $P=0.0230$; cisplatin-2, $P=0.0023$; Figure 1G and H).

To further validate these findings, we acquired a publicly available gene expression data set from a serous ovarian cancer trial of either carboplatin monotherapy or paclitaxel monotherapy [7]. The average expression levels of *BLM* and *FANCI* were significantly higher in the carboplatin-sensitive ovarian cancers ($P=0.026$ and $P=0.036$, respectively, Figure 1I and J). The ratio of *BLM* + *FANCI*/*BRCA1* was also significantly higher in carboplatin-sensitive ovarian cancers ($P=0.026$, Figure 1K). Altogether, these data indicate that the expression levels of *BRCA1* are inversely correlated with those of *BLM* and *FANCI*. Moreover, the association of *BLM* and *FANCI* with paclitaxel response was not significant and the trend was in the opposite direction (Figure 1L and N), suggesting that the correlations might be cisplatin or drug class specific.

The performance of the ratio of *BLM* + *FANCI*/*BRCA1* to predict platinum response was also compared with previously

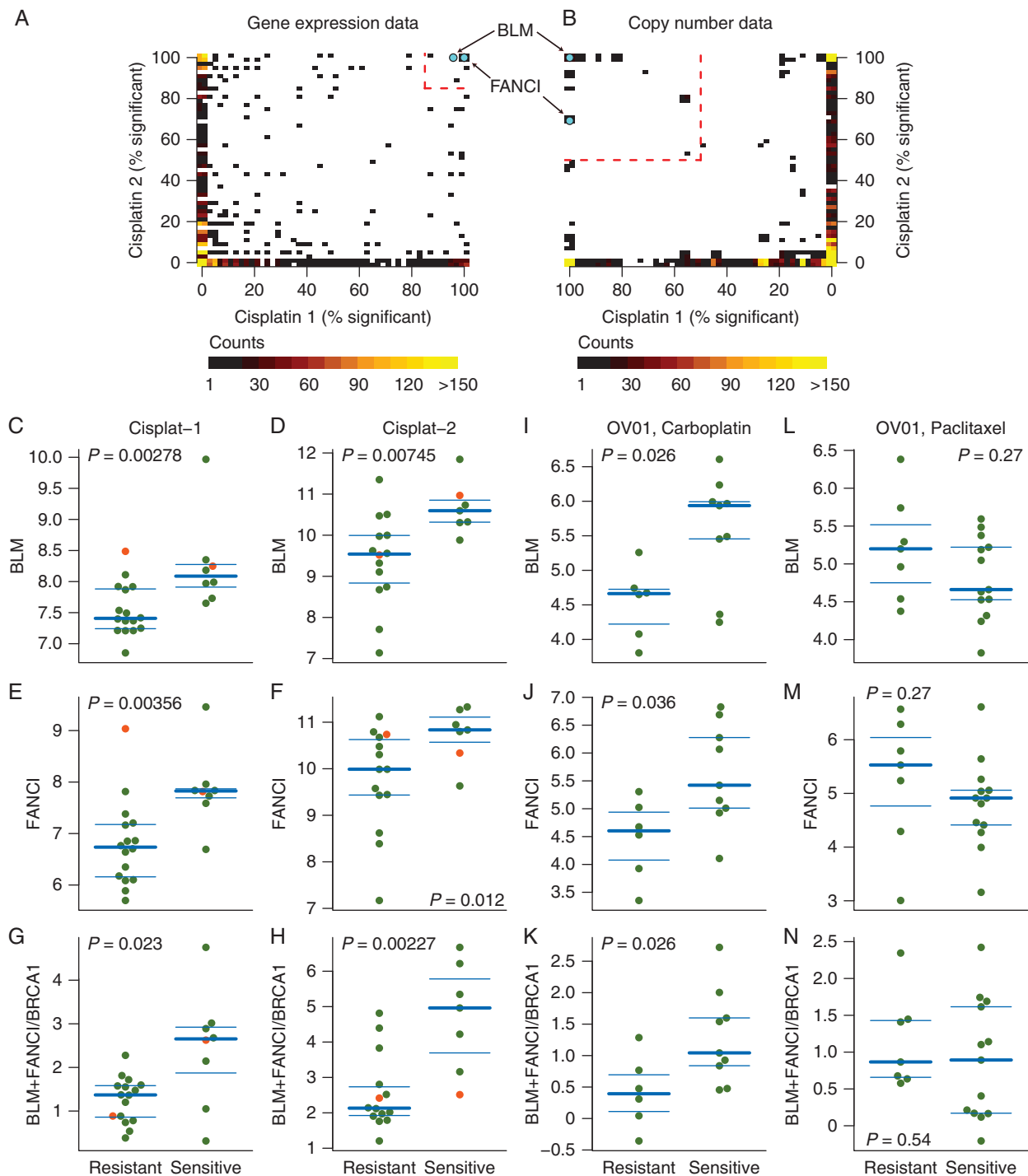


Figure 1. *BLM* and *FANCI* are significantly associated with response to cisplatin chemotherapy. Scatter-plots of LOO analysis in cisplatin-1 and cisplatin-2 cohorts identifies *BLM* and *FANCI* as the only two genes that show significant association with response in both clinical trials, based on both gene expression data (A) and copy number aberration data (B). Red dashed lines indicate significance thresholds based on permutation testing. Color intensity indicates overlapping genes. Association between array expression of *BLM*, *FANCI*, and the ratio of $BLM + FANCI$ expression to *BRCA1*, and response to cisplatin chemotherapy in cisplatin-1 (C, E, G), cisplatin-2 (D, F, H) and OV01 carboplatin-treated (I, J, K) and OV01 paclitaxel-treated (L, M, N) cohorts. Red dots indicate the *BRCA1* mutant cases.

published genomic scar or gene expression-based signatures in the cisplatin-1 and cisplatin-2 cohorts. This gene expression ratio performed better than the previously published predictors (supplementary Figures S2–S4, available at *Annals of Oncology* online). The $BLM + FANCI / BRCA1$ expression ratio also performed better in

the platinum monotherapy-treated serous ovarian cancer cohort [7] and a platinum-treated gastric cancer cohort (supplementary Figures S5 and S7, available at *Annals of Oncology* online), but had no predictive power in non-platinum-treated ovarian cancer samples (supplementary Figure S6, available at *Annals of Oncology*

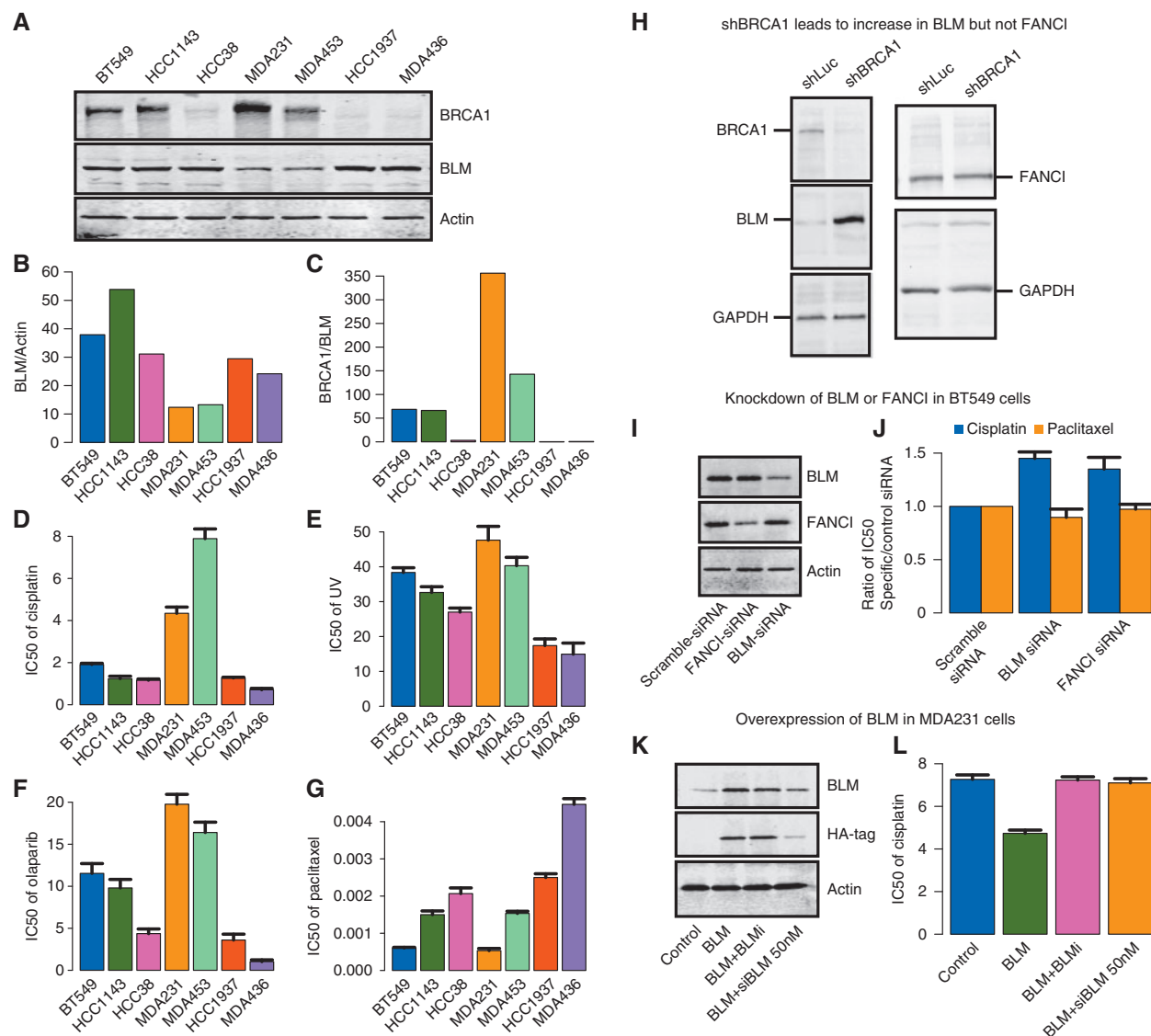


Figure 2. Relationships of BLM, FANCI, and BRCA1 expression levels in breast cancer cell lines and association with therapy sensitivities. (A) Western blot analysis of BLM, BRCA1, and Actin protein abundance in a panel of breast cancer cell lines. BT549, HCC1143, HCC38, MDA231, and MDA453 are BRCA1 wild-type genotype. HCC1937 and MDA436 are BRCA1 mutated (B) Densitometry of Western blot in A for quantification of BLM/Actin and (C) BRCA1/BLM ratio. (D–G) Bar plots of IC₅₀ to treatments in panel of cell lines. Breast cancer cells lines were irradiated with increasing doses of UV-C or subjected to cisplatin, olaparib or paclitaxel treatment, and 4 weeks later assayed for colony formation. Error bars represent the standard deviation between three independent experiments. (D) IC₅₀ to cisplatin (E) IC₅₀ to UV-C (F) IC₅₀ to PARP-inhibitory olaparib (G) IC₅₀ to paclitaxel. (H) Western blot showing the effect of shRNA BRCA1 or shLuciferase control (shLuc) on expression of BLM (left side) and FANCI (right side) in U2OS cells. GAPDH is shown as a loading control. (I) Western blot demonstrating gene-specific siRNA knockdown of BLM or FANCI expression in BT549 breast tumor cells. (J) Bar plots indicate the ratio of IC₅₀ for the cisplatin (black bars) and paclitaxel (gray bars) in gene-specific siRNA-treated cells, relative to scramble control siRNA-treated cells. (K) Western blot for endogenous BLM and HA-tag in MDA231 cells transfected with control vector (lane 1), HA-tag BLM cDNA (BLM, lane2), HA-tag BLM co-treated with BLM helicase small molecule inhibitory (BLM + BLMi, lane 3), and HA-tag BLM co-treated with 50 nM siRNA BLM (BLM + siBLM, lane 4). (L) Bar plots indicate the ratio of IC₅₀ for the cisplatin in MDA231 cells treated with control vector (black bar), HA-tag BLM cDNA (BLM, medium gray bar), HA-tag BLM co-treated with BLM helicase small molecule inhibitory (BLM + BLMi, dark gray bar), and HA-tag BLM co-treated with 50 nM siRNA BLM (BLM + siBLM, light gray bar).

online). It did not predict response to therapy in non-platinum-treated neoadjuvant triple-negative breast cancer cohorts and it did not have prognostic power in non-platinum-treated breast cancer cohorts (see [supplementary Figures S8–S14](#), available at *Annals of Oncology* online).

Relationship of BLM and BRCA1 expression and sensitivity to DNA damaging agents in cell lines

BLM and BRCA1 protein levels were measured in a panel of breast cancer cell lines by Western blot analysis (Figure 2A) and densitometry quantitation of expression ratios are displayed in

bar plots (Figure 2B and C). Two cell lines without *BRCA1* sequence mutations (BT549, HCC1143) and the HCC38 cell line in which *BRCA1* expression is suppressed by methylation displayed high BLM/actin and low *BRCA1*/BLM expression ratios. Two other *BRCA1*wt cell lines (MDA231 and MDA453) displayed relatively lower BLM/actin and higher *BRCA1*/BLM expression ratios. On the other hand, HCC1937 and MDA436, which are known to be *BRCA1*-null, displayed high levels of BLM expression normalized to actin along with very low *BRCA1*/BLM expression ratios. This cell line panel was evaluated for sensitivity to various treatments by colony formation assay. The three panels of Figure 2D–F show that the pattern of sensitivity to cisplatin, UV radiation treatment, and PARP inhibitor olaparib across the panel of cell lines is associated with the pattern of relative expression of *BRCA1*/BLM and BLM/actin. The two sequence-mutated *BRCA1* cell lines and the three cell lines with low *BRCA1*/BLM and high BLM/actin have greater sensitivity to all three treatments. The two cell lines with low BLM and high *BRCA1*/BLM (MDA231, MDA453) are relatively resistant to the same treatments. In contrast, there is no apparent relationship between BLM and *BRCA1* expression with the pattern of sensitivity to the microtubule stabilizer paclitaxel (Figure 2G). These data suggest that *BRCA1*/BLM protein ratio may be predictive of the sensitivity to canonical DNA damaging agents (e.g. cisplatin, UV, and olaparib) but not necessarily to agents like paclitaxel that work through distinct mechanisms.

Effect of modulating *BRCA1* expression on BLM and FANCI expression

In order to elucidate the correlation between *BRCA1*, BLM and FANCI expression levels, we knocked down endogenous *BRCA1* in U2OS cells in which the role of *BRCA1* in the double-strand break repair (DSBR) response has been well studied. After 1 week of treatment following transfection of *BRCA1*-specific shRNA, the expression of *BRCA1*, BLM, and FANCI were measured by Western blot analysis (Figure 2H). Cells in which *BRCA1* was knocked-down showed increased expression of BLM protein compared with control cells treated with shRNA specific to luciferase (Figure 2H, left panel). Given that *BRCA1* is a known negative transcriptional regulator of BLM [8], it is possible that the increase in BLM protein levels in *BRCA1* depleted cells is a direct consequence of this negative regulation. On the other hand, the expression levels of FANCI did not change upon knockdown of *BRCA1* by shRNA (Figure 2H, right panel).

Effect of modulating BLM and FANCI expression on sensitivity to cisplatin and taxanes

Since BLM showed a good correlation between mRNA and protein expression levels and was up-regulated by down-regulation of *BRCA1*, further functional validation was carried out. We carried out knockdown experiments in BT549 breast cancer cells, which inherently express high levels of BLM. Gene-specific siRNA treatment resulted in reduced protein expression of BLM as determined by Western blot (Figure 2I). In these cells, the IC₅₀s for cisplatin and paclitaxel were determined by colony formation assay. The knockdown of either BLM or FANCI by siRNA resulted in greater resistance to cisplatin but no significant effect

on sensitivity to paclitaxel (Figure 2J). Given that cell cycle state can influence chemosensitivity, we examined whether a change in cell cycle upon BLM and/or FANCI depletion could explain the decreased chemosensitivity to cisplatin. Loss of neither BLM (siBLM) nor FANCI (siFANCI) had a significant effect on the cell cycle state (supplementary Figure S15A and B, available at *Annals of Oncology* online). This further suggests a direct link between BLM and/or FANCI levels and sensitivity to DNA damaging agents.

We tested the reverse hypothesis by overexpressing BLM using an HA-tagged lentivirus expression vector in MDA231 cells, which display low levels of BLM and relative resistance to cisplatin. Overexpression was assessed by Western blot analysis for endogenous BLM or for the HA-tag (Figure 2K). In order to address the specificity of this effect, we used siRNA-mediated knockdown of BLM, which reduced the expression levels of both endogenous and HA-tagged BLM protein. We also tested the effect of adding a small molecule inhibitor of BLM (BLMi), which can suppress BLM activity without affecting BLM protein levels (Figure 2K, lanes 3 and 4; supplementary Figure S16, available at *Annals of Oncology* online). As shown in Figure 2L, overexpression of BLM resulted in decrease in the IC₅₀ (greater sensitivity) to cisplatin. This effect was reversed by treatment with the BLM helicase inhibitor (BLMi) and by siRNA knockdown of BLM. These results suggest that increased BLM expression levels and specifically BLM helicase activity promotes increased sensitivity to cisplatin.

BLM overexpression increases spontaneous and cisplatin-induced DNA damage

To determine whether BLM expression levels affect the accumulation of DNA damage in breast cancer cells, we carried out immunofluorescence for markers of DNA damage in MDA231 cells in which BLM expression levels or activity was modulated. Overexpression of BLM resulted in no detectable difference in spontaneous or cisplatin-induced *BRCA1* foci but did suppress RAD51 focus formation (supplementary Figure S17, available at *Annals of Oncology* online). This is consistent with reports that BLM can displace RAD51 localization at damaged replication forks [9]. Since RAD51 is required for homologous recombination-dependent and recombination-independent DSBR mechanisms at stalled replication forks [10], such loss of RAD51 recruitment to sites of DNA damage in BLM overexpressing cells could further explain the increased sensitivity of BLM overexpressing cells to stalled fork-inducing agents like cisplatin (Figure 2L).

Overexpression of BLM also resulted in increased spontaneous DNA damage as evidenced by increased γ -H2AX and phospho-53BP1 (53BP1-p) foci in the absence of any drug treatment (supplementary Figure S18, available at *Annals of Oncology* online; Figure 3a, black bars in Figure 3C and D). This increase in DNA damage is greater in cells after 4-h treatment with cisplatin (Figure 3B, gray bars in Figure 3C and D). The addition of a small molecule BLM helicase inhibitor (BLMi) or siRNA to BLM (siBLM) blocks the effect of BLM overexpression on DNA damage foci. The accumulation of endogenous DNA damage (as seen by γ -H2AX and 53BP1-p foci in untreated cells) as well as cisplatin-induced DNA damage in BLM overexpressing cells, further explains the increased sensitivity of BLM overexpressing cells to cisplatin (Figure 2L).

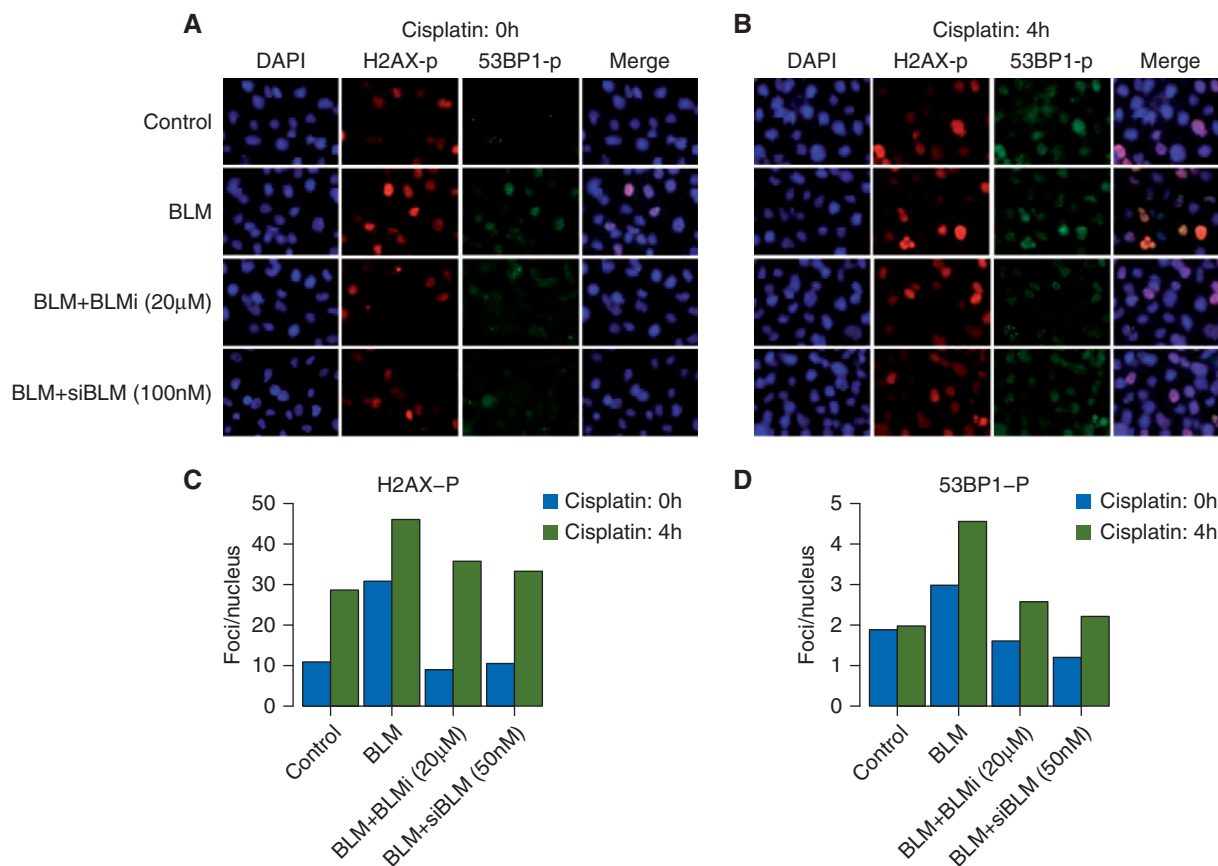


Figure 3. Increased DNA damage upon *BLM* overexpression in MDA231 cells. MDA231 cells were infected with control vector or HA-tag *BLM* cDNA (*BLM*) and co-treated with 20 μM *BLM* small molecule inhibitory (Bi) or 100 nM siBLM (si). Cells were mock treated (cisplatin: 0 h, A) or treated with 10 μM cisplatin for 4 h (cisplatin: 4 h, panel B) and released for 24 h. Immunofluorescence for phospho-H2Ax and phospho-53BP1 was carried out and nuclei counterstained with DAPI. (A) Representative immunofluorescent images for indicated markers in mock treated cells (cisplatin: 0 h) indicating spontaneous DNA damage foci. (B) Representative immunofluorescent image in cells treated with 10 μM cisplatin for 4 h (cisplatin: 4 h) indicating drug induced damage foci. All images were obtained at the same magnification and exposure time. All images were analyzed in parallel for each experiment. (C and D) Cells containing foci recognized by relevant antibodies in immunofluorescence assays, were identified and counted. At least 100 cells were counted for each category of foci at each time point. Bar plots indicate percentages of cells, noted above, that contain γH2AX-p foci (C) and PB53-p foci (D) in mock treated cells (cisplatin: 0 h, black bars) and 10 μM cisplatin treated cells (cisplatin: 4 h, gray bars).

Discussion

In this study, we identified two neighboring genes, *BLM* and *FANCI*, with consistent copy gain and overexpression in cisplatin sensitive primary breast tumors. The association between this three-gene signature of high *BLM* + *FANCI*/BRCA1 and platinum sensitivity was confirmed in an independent cohort of serious ovarian cancer treated with single agent carboplatin. Through *in vitro* studies, we found that chronic repression of BRCA1 expression in cell lines led to an increase in *BLM* expression and no change in *FANCI* expression suggesting a possible compensatory or direct transcriptional effect on *BLM* in the setting of low or insufficient BRCA1. Our findings are consistent with previous reports that BRCA1 regulates transcription of *BLM* in prostate cancer cell lines with overexpression of BRCA1 resulting in down regulation of *BLM* [8].

BLM has recently been shown to play an important role at stalled replication forks [11, 12]. Unlike BRCA1, which is required for the stability of stalled replication forks, loss of *BLM*

does not result in its degradation. Instead, *BLM* has been shown to help restart the stalled forks while suppressing firing of new origins in response to replication stress. An increase in spontaneous DNA damage, especially accumulation of 53BP1-p foci in *BLM* overexpressing cells (Figure 3), is suggestive of degradation and/or collapse of spontaneously arising stalled replication forks.

Homologous recombination (HR) is required for repair of cisplatin-induced damage, as the loss of HR factors such as BRCA1 and BRCA2 increases cisplatin sensitivity [13, 14]. Both pro- and anti-HR roles have been described for *BLM*. Its function in DNA end resection and the ability to promote DNA repair synthesis in D-loops supports HR, while the disruption of RAD51 filament formation, the disruption of D-loops and the dissolution of double Holliday junctions opposes HR [15–18]. One hypothesis to explain these results is that at increased *BLM* levels the anti-HR functions of the protein dominate, leading to increased cisplatin sensitivity.

Reduced HR in BLM overexpressing cells should cause impaired repair of DSBs generated at cisplatin interstrand cross-links. However, cisplatin-induced single-strand lesions are much more common [19]; therefore, the observed damage foci may mostly arise at replication forks that encounter single-strand lesions. It has been shown previously that RAD51 is required for efficient repair and restart of stalled replication forks in an HR-dependent and HR-independent manner [10]. Disruption of RAD51 filament formation by BLM could antagonize post-replication repair promoted by BRCA1, consistent with a BLM function that requires helicase activity, and explaining the similarity of the consequences of low BRCA1 or high BLM. Given that we do not see a disruption of BRCA1 foci in BLM-overexpressing cells despite an apparent reduction in Rad51 foci formation, we cannot rule out that cisplatin sensitivity observed in BLM-overexpressing cells is at least in part related to a BRCA1-independent pathway wherein loss of RAD51 at the sites of DNA damage sensitizes the BLM overexpressing cells to cisplatin.

Funding

ALR, NT, JEG, JDI, ZCW, and ZS are supported by the Breast Cancer Research Foundation (no grant number applies). ZS is supported by the Bassler Foundation, EU FP7 project PREDICT and by the NovoNordisk Foundation (ID 16854) (no grant number applies). DS is supported by Momentum Grant LP2011-015 of the Hungarian Academy of Sciences. NJB is supported by The Villum Kann Rasmussen Foundation (no grant number applies). Analysis of the cisplatin-2 samples was supported by a grant to JEG from the V-Foundation (no grant number applies).

Disclosure

NJB, ZCW, ZS, and ALR are inventors on a patent application for the use of the ratio of BLM + FANCI/BRCA1 to predict response to chemotherapy. All remaining authors have declared no conflicts of interest.

References

- Basourakos SP, Li L, Aparicio AM et al. Combination platinum-based and DNA damage response-targeting cancer therapy: evolution and future directions. *Curr Med Chem* 2017; 24(15): 1586–1606.
- Sokol AM, Cruet-Hennequart S, Pasero P, Carty MP. DNA polymerase η modulates replication fork progression and DNA damage responses in platinum-treated human cells. *Sci Rep* 2013; 3(1): 3277.
- Birkbak NJ, Wang ZC, Kim J-Y et al. Telomeric allelic imbalance indicates defective DNA repair and sensitivity to DNA-damaging agents. *Cancer Discov* 2012; 2(4): 366–375.
- Abkevich V, Timms KM, Hennessy BT et al. Patterns of genomic loss of heterozygosity predict homologous recombination repair defects in epithelial ovarian cancer. *Br J Cancer* 2012; 107(10): 1776–1782.
- Popova T, Manié E, Rieunier G et al. Ploidy and large-scale genomic instability consistently identify basal-like breast carcinomas with BRCA1/2 inactivation. *Cancer Res* 2012; 72(21): 5454–5462.
- Silver DP, Richardson AL, Eklund AC et al. Efficacy of neoadjuvant cisplatin in triple-negative breast cancer. *J Clin Oncol* 2010; 28(7): 1145–1153.
- Ahmed AA, Mills AD, Ibrahim AEK et al. The extracellular matrix protein TGFBI induces microtubule stabilization and sensitizes ovarian cancers to paclitaxel. *Cancer Cell* 2007; 12(6): 514–527.
- De Luca P, Vazquez ES, Moiola CP et al. BRCA1 loss induces GADD153-mediated doxorubicin resistance in prostate cancer. *Mol Cancer Res* 2011; 9(8): 1078–1090.
- Ouyang KJ, Woo LL, Zhu J et al. SUMO modification regulates BLM and RAD51 interaction at damaged replication forks. *PLoS Biol* 2009; 7(12): e1000252.
- Petermann E, Orta ML, Issaeva N et al. Hydroxyurea-stalled replication forks become progressively inactivated and require two different RAD51-mediated pathways for restart and repair. *Mol Cell* 2010; 37(4): 492–502.
- Davies SL, North PS, Hickson ID. Role for BLM in replication-fork restart and suppression of origin firing after replicative stress. *Nat Struct Mol Biol* 2007; 14(7): 677–679.
- Pichierri P, Franchitto A, Rosselli F. BLM and the FANCD1 proteins collaborate in a common pathway in response to stalled replication forks. *EMBO J* 2004; 23(15): 3154–3163.
- Raaphorst GP, Leblanc M, Li LF. A comparison of response to cisplatin, radiation and combined treatment for cells deficient in recombination repair pathways. *Anticancer Res* 2005; 25(1A): 53–58.
- Qing Y, Yamazoe M, Hirota K et al. The epistatic relationship between BRCA2 and the other RAD51 mediators in homologous recombination. *PLoS Genet* 2011; 7(7): e1002148.
- Cejka P, Cannavo E, Polaczek P et al. DNA end resection by Dna2-Sgs1-RPA and its stimulation by Top3-Rmi1 and Mre11-Rad50-Xrs2. *Nature* 2010; 467(7311): 112–116.
- Nimonkar AV, Genschel J, Kinoshita E et al. BLM-DNA2-RPA-MRN and EXO1-BLM-RPA-MRN constitute two DNA end resection machineries for human DNA break repair. *Genes Dev* 2011; 25(4): 350–362.
- Bugreev DV, Yu X, Egelman EH, Mazin AV. Novel pro- and anti-recombination activities of the Bloom's syndrome helicase. *Genes Dev* 2007; 21(23): 3085–3094.
- Karow JK, Constantinou A, Li JL et al. The Bloom's syndrome gene product promotes branch migration of holliday junctions. *Proc Natl Acad Sci USA* 2000; 97(12): 6504–6508.
- Wang D, Lippard SJ. Cellular processing of platinum anticancer drugs. *Nat Rev Drug Discov* 2005; 4(4): 307–320.